



Committee Bay Project

INAC Commercial Lease: 056J/11-1-2, 056J/12-1-2
INAC Land Use Permit: N2014C0002, N2014C0005
Kitikmeot Inuit Association: Land Use Permit KTL314C003
NIRB Project Reference Number: 07EN021
NWB Licence: 2BE-CRA1520

Annual Report

2020

North Country Gold Corp.
January 2021

1.0 **TABLE OF CONTENTS**

1.0	TABLE OF CONTENTS	1
2.0	DISTRIBUTION.....	3
3.0	BACKGROUND	4
4.0	PROJECT DESCRIPTION	5
4.1	Camps.....	7
4.1.1	Hayes Camp.....	7
4.1.2	Bullion Camp	7
4.1.3	Ingot Camp.....	7
4.1.4	Crater Camp.....	7
4.2	Caches.....	7
4.2.1	Three Bluffs drill area and cache	7
4.2.2	West Plains cache	8
4.3	Three Bluffs gold deposit.....	8
4.4	Regional Prospects	8
5.0	2020 WORK ACTIVITIES.....	10
6.0	2019 WORK ACTIVITIES.....	10
6.1	Mineral Exploration Activities.....	10
6.1.1	Diamond Core Drilling.....	10
6.1.2	Surface Sampling	11
6.1.3	Induced Polarization Ground Geophysical Survey	12
6.2	Other Work Activities	13
6.3	Camp Usage	15
6.4	Local Hiring	16
6.5	Consultation	17
6.6	Expenditure	17
7.0	LAND USE INSPECTIONS	18
7.1	2019 Inspection.....	18
8.0	WATER.....	18
8.1	Water Use	18
9.0	WILDLIFE	18
10.0	SPILLS.....	18

List of Tables

Table 1: NCGC Permits and Licences	4
Table 2: Camps and caches within the Committee Bay Project	5
Table 3: 2019 Diamond Drilling Activity.....	10
Table 4: Local community Hires by Position and Community - 2019.....	16

List of Figures

Figure 1: Committee Bay Project Overview.....	6
Figure 2: Committee Bay Project Mineral Occurrences	9
Figure 3: 2018 Till Sampling Coverage	11
Figure 4: 2019 Induced Polarization Ground Geophysical Survey Lines.	12
Figure 5: Progressive reclamation – Burrow Area 1	13
Figure 6: Progressive reclamation – Three Bluffs Grid Area.....	14
Figure 7: Bullion Camp – August 2019.....	15
Figure 8: NCG Kugaaruk Employees	16

2.0 **DISTRIBUTION**

Organization	Distribution Email
Indigenous and Northern Affairs Canada (INAC)	Aadnc.landsmining.aandc@canada.ca
Environment Canada (EC)	enviroinfo@ec.gc.ca
Government of Nunavut – Department of Environment (GN-DOE)	environment@gov.nu.ca
Kitikmeot Inuit Association (KIA)	landsofficerkia@giniq.com projectofficer@kitia.ca
Nunavut Impact Review Board (NIRB)	info@nirb.ca
Nunavut Water Board (NWB)	licensing@nwb-oen.ca

3.0 **BACKGROUND**

In October 2020 Auryn Resources Inc. was renamed Fury Gold Mines Limited ('Fury'). Fury remains a Canadian based junior mineral exploration company focused on the acquisition and development of prospective mineral projects in established mining districts in Canada. North County Gold Corp. (NCGC) is a wholly owned subsidiary of Fury and is the 100% owner of The Committee Bay Project (CBP). Fury's management team is highly experienced with an impressive track record of success in discovery and development, including the advancement of two gold projects located in West Africa and Mexico.

Due to the COVID-19 pandemic no exploration activities were undertaken in 2020 on the CBP.

Fury's exploration strategy for the Committee Bay Project is to identify additional deposits within the Committee Bay Belt via regional grassroots exploration and further drill-testing of previously identified gold prospects. Innovative low impact and cost-effective exploration techniques also form a large part of the exploration strategy for the CBP.

The CBP is made up of mineral claims and leases located on Crown Land and surface and sub-surface Inuit Owned Lands (IOLs) which are subject to the Nunavut Land Claims Agreement (NLCA). See Table 1 for NCGC permits and licences for advanced exploration activities on the CBP.

Organization	Description	Permit/Licence #
Nunavut Impact Review Board (NIRB)	Project Reference Number	07EN021
Indigenous and Northern Affairs Canada (INAC)	Land Use Permit (Bullion camp)	N2014C0002 (renewal in application)
	Land Use Permit (Hayes camp)	N2014C0005 (renewal in application)
Kitikmeot Inuit Association	Land Use Licence for IOL (Ingot/Crater camps)	KTL314C003
Nunavut Water Board (NWB)	Water Licence	2BE-CRA1520
Indigenous and Northern Affairs Canada (INAC)	Commercial Leases	Lease 056J/11-1-2
		Lease 056J/12-1-2

Table 1: NCGC Permits and Licences

4.0 **PROJECT DESCRIPTION**

A land package of 187 mineral claims and 57 mineral leases currently comprise the CBP. This land package lies within a corridor of greenstone belt originating at Committee Bay continuing for approximately 300 km to the southwest towards Agnico Eagle's Meadowbank Mine, within the Eastern Kitikmeot region of Nunavut Territory. The location and distance to local communities can be seen in Figure 1.

The CBP covers approximately 280,000 hectares and encompasses the Three Bluffs gold deposit, more than five advanced gold targets and several significant gold anomalies. There are four permitted camp sites on the CBP. There are also two fuel and equipment caches across the CBP. Camp and infrastructure locations are presented in Table 2.

Site	UTM Coordinates (NAD 83)			Latitude	Longitude
<i>Name</i>	<i>Zone</i>	<i>Easting (m)</i>	<i>Northing (m)</i>	<i>D°M'S"</i>	<i>D°M'S"</i>
Hayes Camp	15 N	564,613	7,394,173	66°39'30" N	091°32'11" W
Bullion Camp	15 N	494,850	7,363,850	66°23'39" N	093°06'55" W
Ingot Camp*	15 N	516,500	7,386,100	66°35'40" N	092°37'34" W
Crater Camp	16 N	420,290	7,474,040	67°22'19" N	088°51'24" W
Three Bluffs Drill Area	15 N	569,153	7,392,660	66°38'42" N	091°26'12" W
West Plains Cache	15 N	479,650	7,342,810	66°12'19" N	093°27'02" W

Table 2: Camps and caches within the Committee Bay Project

(*Ingot camp has been on care and maintenance for several years with no exploration being conducted from that location).

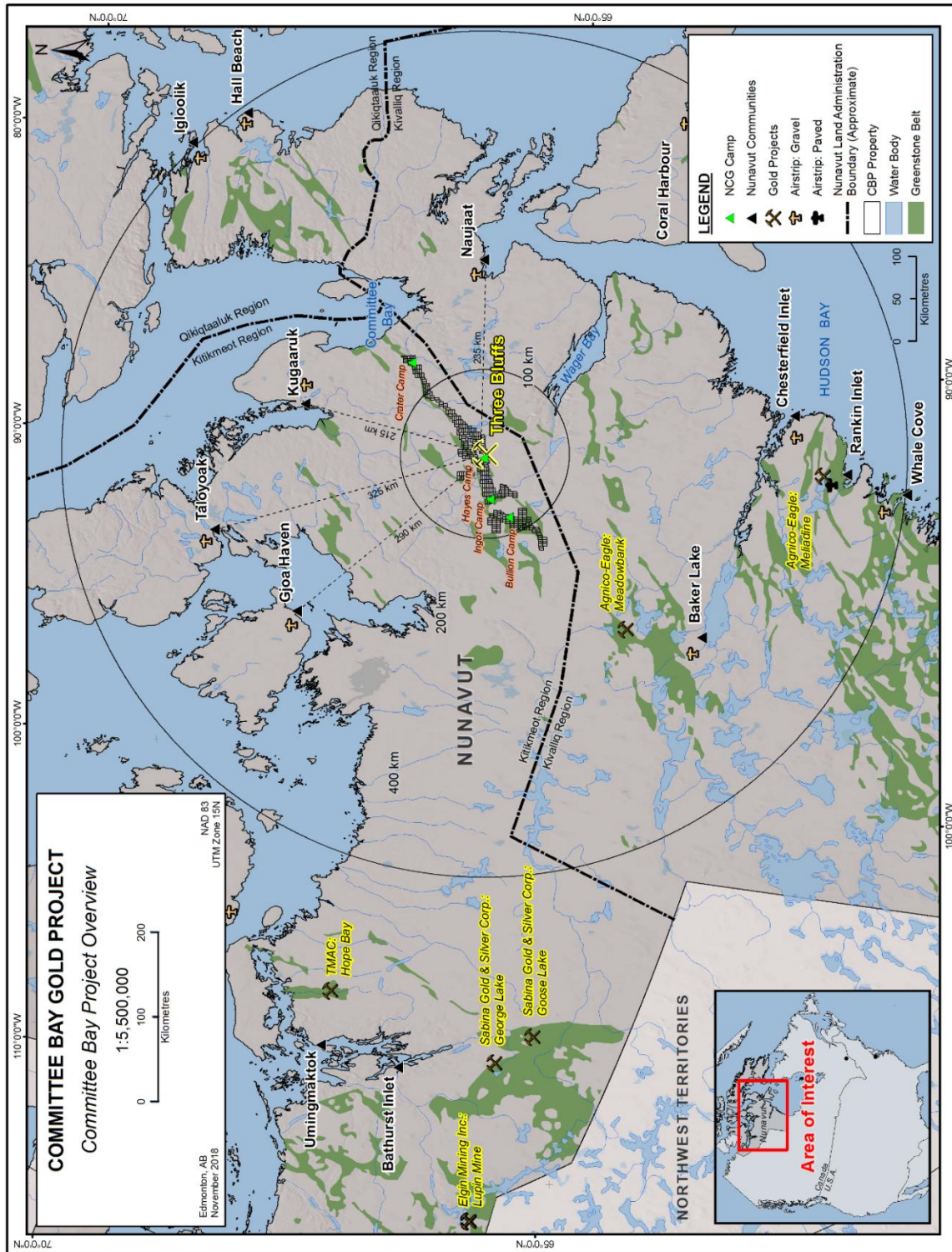


Figure 1: Committee Bay Project Overview

4.1 Camps

4.1.1 Hayes Camp

Hayes Camp is centrally located within the Committee Bay Project, 335 km northeast of Baker Lake, 400 km north of Rankin Inlet and 220 km south of Kugaaruk and provides accommodation for up to 100 people. The camp is supported by a 914 m (3,000') graded esker airstrip and a permitted, seasonally prepared 1,585 m (5,200') winter ice airstrip which is constructed on the adjacent Sandspit Lake. Mobile equipment and earthmoving equipment, power generators, a dual chambered incinerator, fuel and oils are stored at Hayes Camp. There are three permitted quarries near to Hayes camp where no material has been removed from since 2011.

4.1.2 Bullion Camp

Bullion Camp is a small, 20 to 40 person camp used to support seasonal exploration campaigns in the southern portion of the project. This camp is supported by a short 320 m tundra airstrip, a small generator and a small drummed fuel cache.

4.1.3 Ingot Camp

Ingot Camp may accommodate up to 30 people and is used to support seasonal exploration campaigns in the central southern portion of the project. This camp is supported by a 230 m tundra airstrip. A small generator and limited quantities of fuel may be stored at this camp when active.

4.1.4 Crater Camp

Crater Camp is a small, 20 to 40 person camp used to support seasonal exploration campaigns in the northern portion of the project. This camp is supported by a 260 m tundra airstrip, a small generator and a small drummed fuel cache.

4.2 Caches

4.2.1 Three Bluffs drill area and cache

The Three Bluffs drill area and cache is located approximately 5 km east-southeast of Hayes Camp. This area encompasses the Three Bluffs gold deposit and contains three diamond drills and associated equipment along with a small shop and a fuel and consumables cache.

4.2.2 West Plains cache

The West Plains cache has limited materials remaining as they were utilized at various other prospects in recent years. A small supply of core boxes and miscellaneous lumber is all that remains.

4.3 Three Bluffs gold deposit

The Three Bluffs gold deposit is located approximately central to the CBP, 220 km south of Kugaaruk, 235 km west of Repulse Bay and approximately 300 km northeast of Agnico Eagle's Meadowbank Mine.

The Three Bluffs gold deposit mineral resource¹ comprises:

- *An indicated mineral resource of 2.070 Mt at an average grade of 7.85 g/t Au (524,000 oz.)*
- *An inferred mineral resource of 2.930 Mt at an average grade of 7.64 g/t Au (720,000 oz.)*

Three Bluffs occupies a portion of a much larger scale mineralized structure referred to as the Walker Lake Trend. Work to date has outlined high-grade mineralization along the 4 km long Walker Lake Trend with local vertical depths in excess of 500 m.

NCGC strongly believes that continued exploration has excellent potential to increase its mineral resources at Three Bluffs. Future exploration work at the Three Bluffs is expected to continue and may include diamond core drilling.

4.4 Regional Prospects

The CBP encompasses several other high-grade gold targets in addition to the Three Bluffs gold deposit. These prospects include Aiviq, Aarluk, Inuk, Anuri, West Plains, and numerous others (Figure 2). Prospecting, geophysics, rotary air blast (RAB) and diamond drilling have been used along the Committee Bay Greenstone Belt to identify these highly prospective areas.

¹ Please see Technical Report on the Three Bluffs Gold Project, Nunavut, Canada, May 31, 2017 filed on www.sedar.com. Resource estimation was completed in accordance with Canadian Institute of Mining, Metallurgy and Petroleum (CIM) Estimation of Mineral Resource and Mineral Reserve Best Practice Guidelines and is reported in accordance with National Instrument 43-101. Mineral resource reported at 3.0 g/t block cut-off grade for material considered amenable to open pit mining and above 4.0 g/t block cut-off grade for material amenable to underground mining.

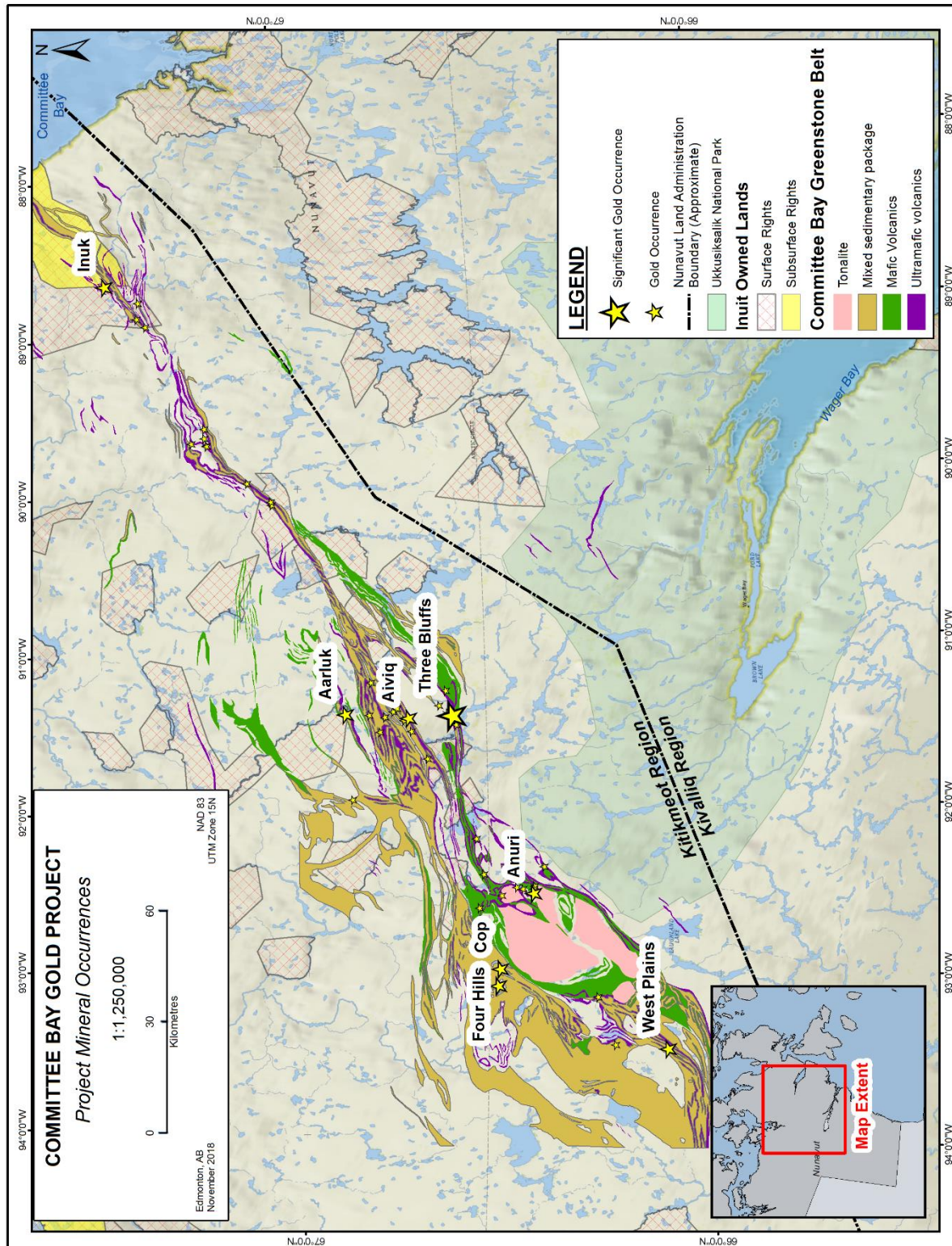


Figure 2: Committee Bay Project Mineral Occurrences

5.0 **2020 WORK ACTIVITIES**

No work was carried out on the GMP during 2020 due to the COVID-19 pandemic and associated travel restrictions into Nunavut. A letter was sent out to stakeholders informing them of the decision not to work the project due to the pandemic and concerns over bringing COVID-19 into Nunavut.

6.0 **2019 WORK ACTIVITIES**

The 2019 exploration program comprised diamond drilling and ground geophysical surveying along with limited geological mapping and surficial sampling. Site maintenance and remediation efforts are a continual aspect of exploration programs at the CBP. Activities occurred on mineral claims and leases on both Crown and Inuit Owned surface lands.

6.1 Mineral Exploration Activities

6.1.1 Diamond Core Drilling

Diamond core drilling was used at the CBP as follow-up to the extensive 2017 and 2018 drill programs. The drilling was concentrated on the extensions to the Aiviq prospect as well as initial drilling at the Shamrock prospect with a total of 7 holes comprising 2708.54 meters (Table 3).

The 2019 drilling identified a new gold-bearing hydrothermal system and made significant progress in geophysical targeting. At the Shamrock target **30 meters of 0.67 g/t gold, including 1.5 m of 5.03 g/t gold** was intersected, which is characterized by quartz veining within gabbroic rocks. The Shamrock target is located 2.5 kilometers to the southwest of the Aiviq target where the Company drilled **10.5 meters of 1.22 g/t gold** this summer.

Prospect	# of Diamond Drill Holes	Total Diamond Drill Metres Drilled
Aiviq	4	1475.62
Shamrock	1	425.81
Kalulik	1	430.07
TB Ext	1	377.04

Table 3: 2019 Diamond Drilling Activity

6.1.2 Surface Sampling

Detailed till geochemical sampling was undertaken in order to follow up on previously identified regional till anomalies. The detailed till sampling program comprised 91 samples (Figure 6).

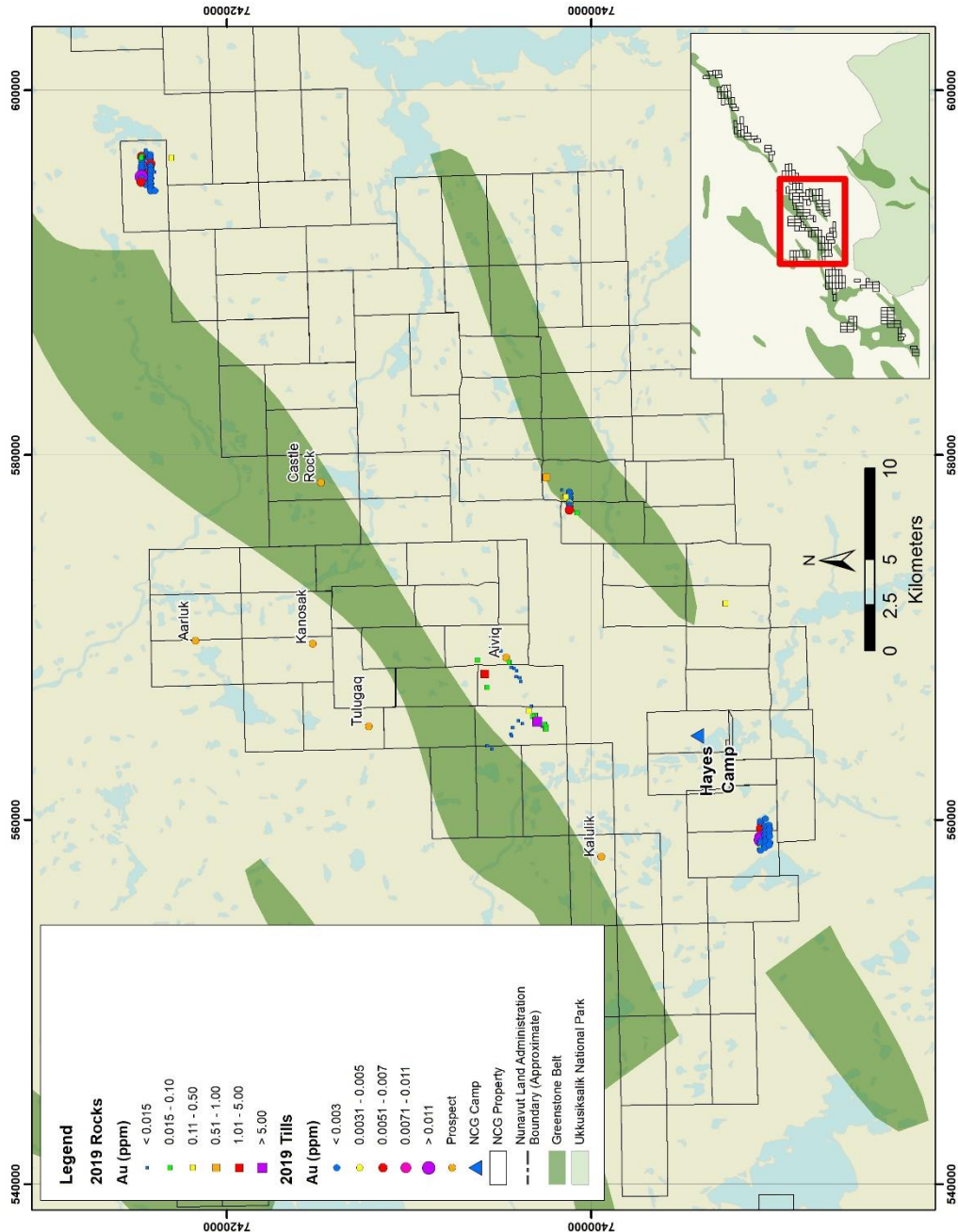


Figure 3: 2018 Till Sampling Coverage

6.1.3 Induced Polarization Ground Geophysical Survey

The location of the 2019 DCIP lines across the Aiviq prospect targeted linear conductors identified from airborne geophysical surveys. The goal was to find zones of higher chargeability values along these conductors, that might indicate high sulphide content with corresponding economic gold mineralization. A total of 26 line-km of DCIP data was collected across 11 lines with a mix of 25m, 50m and 100m dipoles (Figure 7). The 2019 DCIP survey highlighted several anomalous features of interest that assisted drill targeting at during 2019.

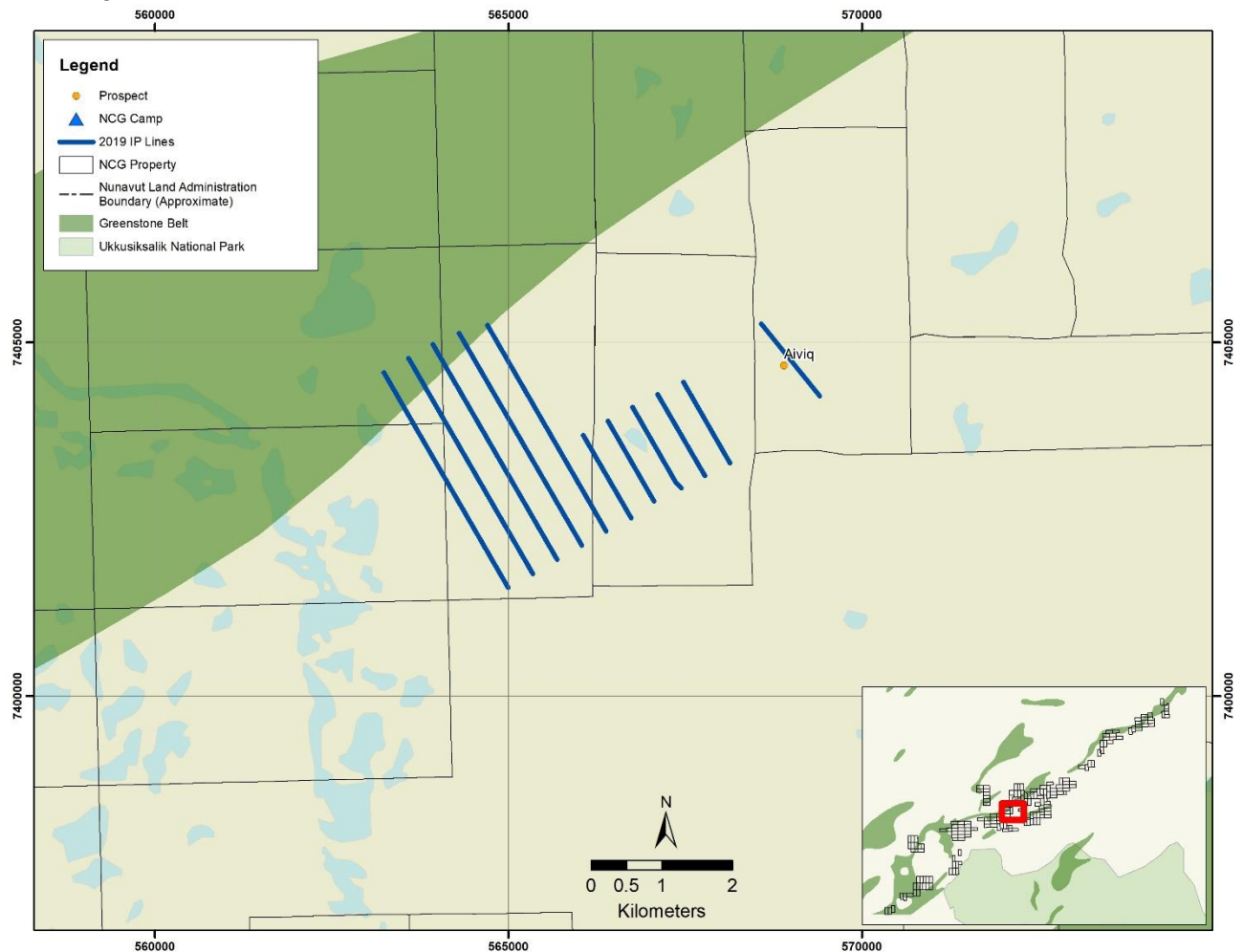


Figure 4: 2019 Induced Polarization Ground Geophysical Survey Lines.

6.2 Other Work Activities

Other work activities comprised non-exploration activities that occurred at the CBP during the 2019 field season and included remediation work and maintenance at Three Bluffs and Hayes Camp.

Waste at site was weighed and organized in preparation for future backhauls. This waste includes scrap metal, waste oils, grease, contaminated materials (fuels, soil, water), used oil, etc. The waste pallets are numbered and their locations are noted for ease of building backhaul loads.

Waste Water Treatment Plant (WWTP)

The WWTP was not used during the 2019 Summer program and was left winterized at the end of Summer 2019. Inspections inside and outside the installation revealed no leaks of the 2017 RV antifreeze.

Hayes Camp

- Inspection and general maintenance of the camp infrastructure and equipment.
- Hazardous waste products were sorted, consolidated and stored in secondary containment within a covered quonset structure ready for back haul.
- Fuel containment was inspected, repaired, covered and secured.
- Limited re-grading of the airstrip was completed in order to maintain optimal drainage and to fill in holes and small ruts that were becoming safety hazards.
- Ongoing reclamation at the Quarry site, Burrow Area 1, just to the north of camp was completed. This included emptying of bulk cutting bags into the depression created by the quarrying activity as well as general site cleanup and monitoring.



Figure 5: Progressive reclamation – Burrow Area 1

- General camp cleanup and maintenance.
- Maintenance on heavy equipment to ensure optimal performance and no leaks.
- Water samples taken and tested.
- Backhaul of empty propane cylinders to Quebec via ship for recertification and refilling.

Three Bluffs Drill Grid

- Fuel cache was inspected and repaired where required.
- Collapsed storage tent was dismantled and removed.



Figure 6: Progressive reclamation – Three Bluffs Grid Area

Bullion Camp

- Inspection of camp and infrastructure was completed (Figure 14).
- Fuel containment berm was inspected.



Figure 7: Bullion Camp – August 2019

6.3 Camp Usage

Exploration activities between July 4th and August 14th were based out of Hayes Camp.

6.4 Local Hiring

NCGC hired a total of 14 local workers from the surrounding community to take part in the 2019 CBP field season (Table 7). The total local payroll expenditure for the program was \$128,284.00 for 352 days of work.

Kugaaruk	Days	Hours	Labour Costs
Assistant Camp Manager Level 1	73	876	\$ 32,032.00
Cook Helper/Cleaner	39	468	\$ 12,792.00
Site Services Level 1	146	1752	\$ 47,424.00
Site Services Level 2	94	1128	\$ 36,036.00
Grand Total	352	4,224	\$ 128,284.00

Table 4: Local community Hires by Position and Community - 2019

NCGC considers its work force of local personnel hired from the nearby communities to be an integral part of the success of its exploration. Local knowledge of the land, climate and environment brought to the team by residents of the region factor heavily into all NCGC's operational decisions.

This year, as in past seasons, local employees were engaged in a number of capacities including camp managers and assistants, equipment operators, incinerator operators, carpenters, mechanics, core cutters, drill pad builders and kitchen helpers. NCGC provides both practical 'on the job' training and certificate-based training for local workers.

The company looks forward to recommencing explorations activities at the CBP in 2019 and to the continued hiring and training of a local workforce.



Figure 8: NCG Kugaaruk Employees

6.5 Consultation

Two NCGC representatives presented at the Kitikmeot Inuit Associations board meeting in Taloyoak in early May 2019. A formal consultation will be completed in 2021 once work plans are finalized.

6.6 Expenditure

Approximately \$860 thousand was expended with northern businesses and the employment of local workers. This accounts for ~43% of the total \$2 million in expenditures during the 2019 field season. Northern businesses involved in the 2019 program included:

- Arctic Buying Company
- Baker Lake Contracting & Supplied Ltd.
- Baker Lake Lodge
- EPLS Home Hardware & Building Centre
- Exploration Tents and Arctic Camp
- Kitikmeot Helicopters
- Kitikmeot BBE Expediting Ltd
- Koomiut Co-op
- Northern Comm. & Nav. Systems
- Nunavut Sealink & Supply Inc.
- Ookpik Aviation Inc.
- Sarliaq Holdings Ltd
- SK Construction Ltd
- Summit Air Ltd.
- The North West Co. Inc.

7.0 **LAND USE INSPECTIONS**

7.1 2019 Inspection

A land use and water licence inspection was not completed on the CBP during the 2020.

8.0 **WATER**

8.1 Water Use

As no exploration was undertaken during 2020 no water was used and no water testing was completed.

9.0 **WILDLIFE**

NCGC recognizes that the CBP is located within a diverse ecosystem with abundant flora and fauna. As part of our efforts to mitigate any impact on the local wildlife populations NCGC has a wildlife reporting system in place. When exploration activities recommence in 2021 NCGC will continue to record and report wildlife sightings.

NCGC is committed to continue to monitor wildlife throughout the CBP in order to mitigate any and all effects on wildlife.

10.0 **SPILLS**

No spills occurred on the CBP during 2020.