



# WESTCOAST DRILLING SUPPLIES LTD.

#6 - 2351 SIMPSON ROAD  
RICHMOND, B.C. V6X 2R2

TEL: (604) 278-4954  
FAX: (604) 278-4914

*Serving the Drilling Industry*

EMERGENCY PHONE NO.: (604) 278-4954

## MATERIAL SAFETY DATA SHEET

### SECTION I: IDENTIFICATION OF PRODUCT

PRODUCT NAME: 550 X POLYMER

CHEMICAL FAMILY: Copolymer of Acrylamide and Sodium Acrylate

PRODUCT USE: Drilling Mud Additive

WHMIS CLASSIFICATION: Not a Controlled Product under WHMIS

WORK PLACE HAZARD: Not Applicable

TRANSPORTATION OF DANGEROUS GOODS (TDGR)

CLASSIFICATION: Not Applicable

PACKAGE GROUP: Not Applicable

PRODUCT IDENTIFICATION NUMBER (PIN): Not Applicable

### SECTION II: HAZARDOUS INGREDIENTS

<u>INGREDIENT</u>	<u>PERCENTAGE</u>	<u>CAS NUMBER</u>	<u>LD(50)</u>	<u>LC(50)</u>
No Hazardous Ingredients				

### SECTION III: TOXICOLOGICAL PROPERTIES

#### ROUTE OF ENTRY:

[ ] skin, [ ] eye contact, [xxx] inhalation, [ ] ingestion

SKIN CONTACT: Prolonged contact may cause skin irritation or dermatitis in some individuals.

EYE CONTACT: May Cause irritation.

INHALATION: May cause sneezing, slight irritation of nose and throat.

INGESTION: Not available

EFFECTS OF ACUTE EXPOSURE: Not available

---

SECTION IV: FIRST AID MEASURES

SKIN CONTACT: Wash exposed area with soap and water. If irritation or abnormalities persist, call a physician.

EYE CONTACT: Immediately flush eyes with water for 15 minutes and call a physician.

INHALATION: Remove to fresh air. If not breathing, give artificial respiration, preferably mouth-to-mouth. If breathing is difficult, give oxygen. Call a physician.

INGESTION: Do not induce vomiting. If conscious, dilute by giving two glasses of water. Call a physician immediately.

---

## SECTION V: PHYSICAL DATA

APPEARANCE AND ODOUR:	White granular solid; faint odour
DENSITY (SPECIFIC GRAVITY):	0.80
BOILING POINT:	Decomposes
MELTING POINT:	Not Applicable
WATER SOLUBILITY:	Soluble
% VOLATILE BY VOLUME:	Not Applicable
EVAPORATION RATE:	Not Applicable
VAPOUR PRESSURE: (MM Hg)	Very Low
VAPOUR DENSITY: (Air = 1)	Not Applicable

---

## SECTION VI: FIRE AND EXPLOSION HAZARD DATA

FLASH POINT: Not Applicable

FLAMMABLE LIMIT: Not Applicable

EXTINGUISHING MEDIA: Dry chemical, foam, CO<sub>2</sub>

SPECIAL FIRE FIGHTING PROCEDURES: Use self-contained respirators for fire fighting personnel.

UNUSUAL FIRE AND EXPLOSION HAZARDS: Oxides of carbon and nitrogen and products of incomplete combustion.

---

## SECTION VII: REACTIVITY DATA

STABLE [XXX]      INSTABLE: [ ]

INCOMPATIBILITY (CONDITIONS TO AVOID): Strong oxidizing agents and caustic solutions.

HAZARDOUS DECOMPOSITION PRODUCTS: Not Applicable

HAZARDOUS POLYMERIZATION: Will not occur [xxx]      May occur [ ]

### SECTION VIII: PREVENTATIVE MEASURES

RESPIRATORY PROTECTION: Suggest NIOSH/MESA approved dust mask.

VENTILATION: Ten (10) changes per hour suggested.

PROTECTIVE GLOVES: Suggest plastic or rubber.

EYE PROTECTION: Suggest goggles.

OTHER PROTECTIVE EQUIPMENT: Suggest rubber apron.

### PRECAUTIONS TO BE TAKEN IN HANDLING AND STORAGE

Avoid prolonged or frequent contact when handling material. Do not inhale dust or breathe vapour. Keep container closed when not in use. Store in a cool and dry location away from oxidizing and reducing agents.

### STEPS TO BE TAKEN IN CASE OF SPILL OR LEAK

Ventilate area. Wear rubber boots, gloves and a self-contained breathing apparatus if ventilation is not adequate. Collect into a waste container. Avoid raising dust. Wash spill site after material pick-up. Water solutions are very slippery. May constitute a hazard following a spill.

### WASTE DISPOSAL METHOD

Dispose of waste according to federal, provincial and local regulations.

---

### SECTION IX: PREPARATION

The information contained herein is given in good faith, but no warranty, expressed or implied is made.

Date issued: January 1, 1991

Date Revised:

By: Product Safety Committee

AMENDMENT

HAZARDOUS INGREDIENTS (550 X)

MATERIAL OR COMPONENT	WT%	HAZARD DATA
COPOLYACRYLAMIDE/SODIUM ACRYLATE		NOT CONSIDERED HAZARDOUS

ENVIRONMENTAL

DEGRADABILITY/AQUATIC TOXICITY: N. D.

OCTANOL/WATER PARTITION COEFFICIENT: N. D.

WASTE DISPOSAL METHODS: INCINERATION AND/OR DISPOSAL IN CHEMICAL  
LANDFILL. DISPOSER MUST COMPLY WITH  
FEDERAL STATE AND LOCAL DISPOSAL OR  
DISCHARGE LAWS.

RCRA STATUS OF UNUSED MATERIAL IF DISCARDED: NOT A "HAZARDOUS  
WASTE"

HAZARDOUS WASTE NUMBER: N. A.

REPORTABLE QUANTITY: EPA 40 CFR (CERCLA 102): N. A.

THRESHOLD PLANNING QUANTITY: EPA 40 CFR 355 (SERA 301-304): N. A.

TOXIC CHEMICAL RELEASE REPORTING: EPA 40 CFR 372 (SERA 311-313):  
N. A.

EPA HAZARD CLASSIFICATION CODE: ACUTE - YES      CHRONIC - NO  
FIRE - NO      PRESSURE - NO  
REACTIVE - NO

HMIS AND NFPA RATINGS:	HMIS	NFPA
HEALTH	1	1
FLAMMABILITY	0	0
REACTIVITY	1	1
SPECIAL	N.A.	N.A.



# WESTCOAST DRILLING SUPPLIES LTD.

#6 - 2351 SIMPSON ROAD  
RICHMOND, B.C. V6X 2R2

TEL: (604) 278-4954  
FAX: (604) 278-4914

EMERGENCY PHONE NO. (604) 278-4954

Serving the Drilling Industry

## MATERIAL SAFETY DATA SHEET

### SECTION I: IDENTIFICATION OF PRODUCT

PRODUCT NAME: LINSEED SOAP

CHEMICAL FAMILY: Lubricating grease

WHMIS CLASSIFICATION: Not Regulated

WORK PLACE HAZARD: Not Applicable

TRANSPORTATION OF DANGEROUS GOODS (TDGR)

CLASSIFICATION: Not Available

PACKAGE GROUP: Not Applicable

PRODUCT IDENTIFICATION NUMBER (PIN): Not Applicable (Petroleum Lubricating Grease)

### SECTION II: HAZARDOUS INGREDIENTS

INGREDIENT	PERCENTAGE	CAS NUMBER	LC(50)	LC(50)
Linseed Soap	100%	Mixture		

### SECTION III: TOXICOLOGICAL PROPERTIES

ROUTE OF ENTRY: Information not available

[ ] skin, [ ] eye contact, [xxx] inhalation, [ ] ingestion

SKIN CONTACT: Prolonged and repeated contact with skin can cause deratting and drying of the skin resulting in skin irritation and dermatitis.

EYE CONTACT: Not available

INHALATION: Inhalation of oil mist or vapours from hot grease may cause irritation of the upper respiratory tract. Long term intensive exposure may cause benign lung fibrosis.

INGESTION: Not Available.

CHRONIC OVEREXPOSURE: Not Determined.

IRRITATION INDEX: SKIN: Not Available

SYMPTOMS OF EXPOSURE: Not Available

EXPOSURE INFORMATION: Oil mist (particulate): 5 mg/M<sup>3</sup> (TLV/TWA) ACGIH 88/89  
10 mg/m<sup>3</sup> (TLV/STEL) ACGIH 88/89

---

#### SECTION IV: FIRST AID MEASURES

SKIN CONTACT: Remove contaminated clothing. Wash contaminated skin with mild soap and water. Wipe excess from skin.

EYE CONTACT: Flush eyes with water for at least fifteen (15) minutes.

INHALATION: Remove victim from further exposure. Additional first aid treatment is not ordinarily required.

INGESTION: Do not induce vomiting. Obtain medical attention immediately.

OTHER INSTRUCTIONS: None.

---

#### SECTION V: PHYSICAL DATA

APPEARANCE AND ODOUR:	Semi-solid brown coloured grease; slight hydrocarbon odour
DENSITY (SPECIFIC GRAVITY):	1.0
BOILING POINT:	100 Degree C
MELTING POINT:	Not Available
WATER SOLUBILITY:	Miscible
% VOLATILE BY VOLUME:	Not Available
EVAPORATION RATE:	Not Available
VAPOUR PRESSURE: (MM Hg)	Not Available
VAPOUR DENSITY: (Air = 1)	Not Available
Ph:	9.5
VISCOSITY:	Not Available

---

#### SECTION VI: FIRE AND EXPLOSION HAZARD DATA

FLASH POINT: 222°C      FLAMMABLE LIMIT: Not Available

AUTO IGNITION TEMP: 343°C

EXTINGUISHING MEDIA: Dry Chemical, Carbon Dioxide CO<sub>2</sub>, Foam, Water fog.

SPECIAL FIRE FIGHTING PROCEDURES: No special procedures - Avoid inhalation of smoke. Caution, spilled material is slippery. Use water to cool fire-exposed containers.

UNUSUAL FIRE AND EXPLOSION HAZARDS: None currently known.

## SECTION VII: REACTIVITY DATA

STABLE: [yes]      INSTABLE: [ ]

INCOMPATIBILITY (CONDITIONS TO AVOID): Not Available

HAZARDOUS DECOMPOSITION PRODUCTS: Carbon monoxide; carbon dioxide and dense smoke are produced on combustion. Avoid excessive heat, formation of vapours or mists.

HAZARDOUS POLYMERIZATION: Will not occur [ ]      May occur [ ] Not Available

## SECTION VIII: PREVENTATIVE MEASURES

RESPIRATORY PROTECTION: Under conditions of high heat use an air purifying respirator (mechanical filter with accompanying organic vapour cartridge)

VENTILATION: Highly recommended for all indoor situations to control fugitive emissions. Concentrations in air should be maintained below the recommended threshold limit value if unprotected personnel are involved.

LOCAL: If oil mist is present or if exposure is exceeded.

MAKE-UP AIR: Should always be supplied to balance air exhausted (either generally or locally).

PROTECTIVE GLOVES: Impervious gloves (viton, nitrile, PVC, neoprene) should be worn at all times when handling this product.

EYE PROTECTION: Chemical safety goggles and/or full face shield to protect eyes and face, if product is handled such that it could be splashed into eyes.

OTHER PROTECTIVE EQUIPMENT: Impervious clothing (apron, coveralls) should be worn in confined workspaces or where the risk of skin exposure is much higher.

PERMISSIBLE CONCENTRATIONS: Not Available

## PRECAUTIONS TO BE TAKEN IN HANDLING AND STORAGE

Store in a cool, dry, well ventilated area, away from heat and ignition sources. Avoid excessive heat, formation of oil mist, breathing of vapours and mist of hot oil and prolonged or repeated contact with skin. Launder contaminated clothing prior to reuse. Properly dispose of contaminated leather articles, including shoes, that cannot be decontaminated.

## STEPS TO BE TAKEN IN CASE OF SPILL OR LEAK

Spilled material is slippery. Isolate hazard area and restrict access. Wear appropriate breathing apparatus (if applicable) and protective clothing. Stop leak only if safe to do so. Contain a land spill by diking. For large spills remove by mechanical means and place in containers. Clean area with appropriate cleaner.

Do not allow product or run off from fire control to enter storm or sanitary sewers, lakes, rivers, streams or public waterways. Block off drains and ditches. Provincial regulations require and federal regulations may require that environmental and/or other agencies be notified of a spill incident. Spill area must be cleaned and restored to original condition or to the satisfaction of authorities.



# WESTCOAST DRILLING SUPPLIES LTD.

#6 - 2351 SIMPSON ROAD  
RICHMOND, B.C. V6X 2R2

TEL: (604) 278-4954  
FAX: (604) 278-4914

Serving the Drilling Industry

EMERGENCY PHONE NO. (604) 278-4954

## MATERIAL SAFETY DATA SHEET

### SECTION I: IDENTIFICATION OF PRODUCT

PRODUCT NAME: BIG BEAR DIAMOND DRILL ROD GREASE

CHEMICAL FAMILY: Hydrocarbon

WHMIS CLASSIFICATION: Not Regulated

WORK PLACE HAZARD: Not Applicable

#### TRANSPORTATION OF DANGEROUS GOODS (TDGR)

CLASSIFICATION: Not Regulated

PACKAGE GROUP: Not Applicable

PRODUCT IDENTIFICATION NUMBER (PIN): Not Applicable

### SECTION II: HAZARDOUS INGREDIENTS

<u>INGREDIENT</u>	<u>PERCENTAGE</u>	<u>CAS NUMBER</u>	<u>LD/50</u>	<u>LC/50</u>
Severely hydrotreated naphthenic oils	< 75.00%	64742-52-5	> 3 g/kg (Dermal Rabbit) > 5 g/kg (Oral Rat)	Not Determined
Barium soap	< 35.00%	68201-19-4	Not Determined	

### SECTION III: TOXICOLOGICAL PROPERTIES

#### ROUTE OF ENTRY:

[x] skin, [ ] eye contact, [ ] inhalation, [ ] ingestion

SKIN CONTACT: Acute exposure is believed to be minimally irritating.

EYE CONTACT: Acute exposure is believed to be minimally irritating.

INHALATION: Believed to be minimally irritating if not in excess of permissible concentrations; see section VIII.

INGESTION: Not Available.

CHRONIC OVEREXPOSURE: Not Determined.



IRRITATION INDEX: SKIN: Believed to be 1.0 - 2.0/8.0 (rabbit); slightly irritating  
EYES: Believed to be < 15/110 (rabbit); no appreciable effect

SYMPTOMS OF EXPOSURE: None expected other than possible minor irritation. Considered practically non-toxic.

#### SECTION IV: FIRST AID MEASURES

SKIN CONTACT: None considered necessary.

EYE CONTACT: As with most foreign materials, should eye contact occur, flush eyes with plenty of water.

INHALATION: None considered necessary.

INGESTION: None considered necessary. Do not induce vomiting.

OTHER INSTRUCTIONS: In some cases of ingestion and/or inhalation, medical attention should be obtained.

#### SECTION V: PHYSICAL DATA

APPEARANCE AND ODOUR:	Brownish yellow, fibrous grease
DENSITY (SPECIFIC GRAVITY):	> 1.0
BOILING POINT:	700°F
MELTING POINT:	400°F
WATER SOLUBILITY:	Negligible
% VOLATILE BY VOLUME:	Not Determined
EVAPORATION RATE:	Not Determined
VAPOUR PRESSURE: (MM Hg)	Not Determined (low)
VAPOUR DENSITY: (Air = 1)	> 1.0
Ph:	Not Applicable
VISCOSITY:	NLGI No. 3-4 grease

#### SECTION VI: FIRE AND EXPLOSION HAZARD DATA

FLASH POINT: > 350°F (COC Method) FLAMMABLE LIMIT: Not Determined

EXTINGUISHING MEDIA: According to the National Fire Protection Association Guide, use water spray, Dry Chemical, Foam, Carbon Dioxide CO<sub>2</sub>. Water or foam may cause frothing.

SPECIAL FIRE FIGHTING PROCEDURES: Use water to cool fire-exposed containers. If a leak or spill has not ignited, use water spray to disperse the vapours and to provide protection for persons attempting to stop the leak. See Hazardous Decomposition Products, Section VII.

UNUSUAL FIRE AND EXPLOSION HAZARDS: None

## SECTION VII: REACTIVITY DATA

STABLE: ☒

INSTABLE: ☐ Info not available

INCOMPATIBILITY (CONDITIONS TO AVOID): Strong oxidizers.

HAZARDOUS DECOMPOSITION PRODUCTS: This material decomposes at a high temperature to form carbon monoxide; carbon dioxide, aldehydes and ketones, combustion products of nitrogen and sulphur.

HAZARDOUS POLYMERIZATION: Will not occur ☒ May occur ☐

---

## SECTION VIII: PREVENTATIVE MEASURES

RESPIRATORY PROTECTION: None required if exposures are within the permissible concentrations; See below.

VENTILATION: Natural dilution.

PROTECTIVE GLOVES: Neoprene

EYE PROTECTION: Chemical type goggles or face shield optional.

OTHER PROTECTIVE EQUIPMENT: Standard work clothing and work shoes.

PERMISSIBLE CONCENTRATIONS: AIR: 5 mg/cubic metre of air for mineral oil mist averaged over an 8 hour daily exposure (ACGIH, 1986 - 87)

## PRECAUTIONS TO BE TAKEN IN HANDLING AND STORAGE

Exposed persons should exercise reasonable personal cleanliness; this includes cleansing exposed skin areas several times daily with soap and water and laundering or dry cleaning soiled work clothing at least weekly.

Minimum feasible handling temperatures should be maintained. Periods of exposure to high temperatures should be minimized. Water contamination should be avoided.

## STEPS TO BE TAKEN IN CASE OF SPILL OR LEAK

Contain spill if possible. Wipe up or absorb on suitable material and shovel up.

## WASTE DISPOSAL METHOD

Re-evaluation of the product may be required by the user at the time of disposal, since the product uses transformations, mixtures and processes may influence waste classification. Disposal should be in accordance with applicable federal, provincial and local regulations.

---

## SECTION IX: PREPARATION

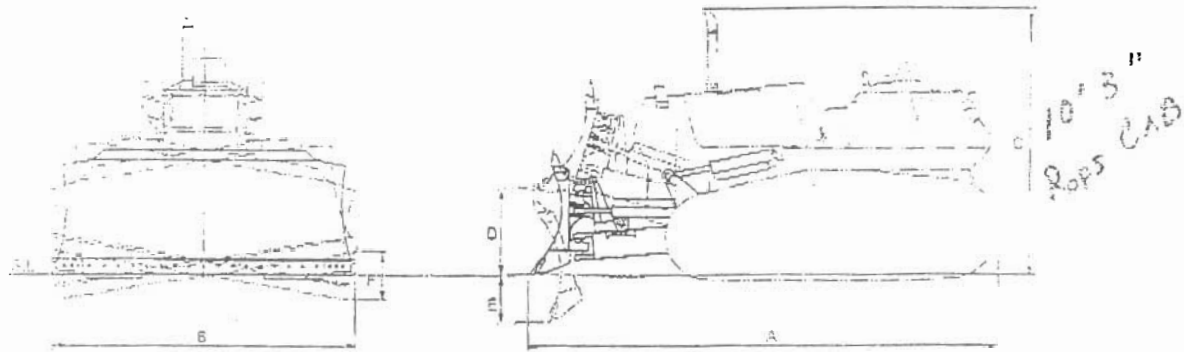
The information contained herein is given in good faith, but no warranty, expressed or implied is made.

Date issued: Sept. 17, 1993 By: Product Safety Committee

Date Revised:

# Blade Specifications Power Angle-tilt dozer

## BULLDOZERS



Model		D61EX-12	D61EX-12***	D61EX-12 LT	D61PX-12
Operating weight**	kg (lb)	15470 (34,110)	15630 (34,460)	16250 (35,800)	17120 (37,830)
Blade capacity LH*** SAE	m <sup>3</sup> (yd <sup>3</sup> )	3.4 (4.4)	3.8 (5.0)	3.4 (4.4)	3.8 (5.0)
Dimensions					
Overall length	mm (ft.in)	5030 (16'6")	5030 (16'6")	5440 (17'10")	5440 (17'10")
Overall width	mm (ft.in)	3275 (10'9")	3860 (12'8")	3275 (10'9")	3860 (12'8")
Overall height	mm (ft.in)	2945 (9'8")	2945 (9'8")	2945 (9'8")	2945 (9'8")
Ground pressure	kg/cm <sup>2</sup> (PSI)	0.50 (7.11)	0.50 (7.11)	0.43 (6.11)	0.32 (4.56)
Dozer equipment					
Dozer weight	kg (lb)	Inside mount 2340 (5,160)	Inside mount 2500 (5,510)	Inside mount 2480 (5,470)	Inside mount 2630 (5,800)
Dozer length (includes hydraulic control unit)	mm (ft.in)	3275 (10'9")	3860 (12'8")	3275 (10'9")	3860 (12'8")
Dozer height	mm (ft.in)	1200 (3'11")	1160 (3'10")	1200 (3'11")	1160 (3'10")
Max. lift above ground	mm (ft.in)	915 (3')	915 (3')	1045 (3'5")	1020 (3'4")
Max. drop below ground	mm (ft.in)	515 (1'8")	515 (1'8")	550 (1'8")	575 (1'9")
Max. tilting adjustment	mm (ft.in)	510 (1'8")	600 (2')	515 (1'8")	600 (2')
Working angle (L/R)	degree	25/25	25/25	25/25	23/23

\*Including dozer equipment in addition to bare tractor, excluding ROPS and cab

\*\*Blade length - 4' Blade height

\*\*\*Wide power angle-tilt dozer

# Specifications

## CRAWLER-TYPE TRACTORS

Model		D61EX-12	D61EX-12 LT	D65E-12	D65EX-12
Operating Weight*	kg (lb)	13130 (28,950)	13830 (30,490)	15620 (34,440)	15570 (34,350)
Rated Horsepower	HP (kW)/RPM	150 (112)/1850	150 (112)/1850	180 (135)/1850	180 (135)/1850
Travel Range					
Speed	km/h (MPH)				
1st		3.5 (2.2)	3.5 (2.2)	3.9 (2.4)	3.9 (2.4)
2nd		6.0 (3.7)	6.0 (3.7)	6.9 (4.2)	6.9 (4.2)
3rd		10.3 (6.4)	10.3 (6.4)	10.3 (6.4)	10.3 (6.4)
4th		—	—	—	—
5th		—	—	—	—
Reverse 1st		4.6 (1.9)	4.6 (1.9)	5.0 (3.1)	5.0 (3.1)
2nd		7.9 (4.9)	7.9 (4.9)	8.6 (5.3)	8.6 (5.3)
3rd		12.8 (8.0)	12.8 (8.0)	13.4 (8.3)	13.4 (8.3)
4th		—	—	—	—
Swamp pull	kg (lb/kN)	—	—	—	—
Dimensions					
Overall length	mm (ft.in)	3935 (12'11")	4160 (13'6")	4365 (14'4")	4365 (14'4")
Overall width (w/o fission)	mm (ft.in)	2500 (8'2")	2500 (8'2")	2300 (7'7")	2300 (7'7")
Overall height (at transport)**	mm (ft.in)	2195 (7'2")	2195 (7'2")	2330 (7'8")	2330 (7'8")
Track gauge	mm (ft.in)	1900 (6'3")	1900 (6'3")	1880 (6'2")	1880 (6'2")
Clearance of track on ground	mm (ft.in)	2600 (8'6")	3170 (10'5")	2375 (7'8")	2875 (9'5")
Engine					
Model		KOMATSU S6D114E	KOMATSU S6D114E	KOMATSU S6D125E	KOMATSU S6D125E
Cylinders		6	6	6	6
Bore x stroke	mm (in)	6-114 x 135 (4.49 x 5.31)	6-114 x 135 (4.49 x 5.31)	6-125 x 150 (4.92 x 5.91)	6-125 x 150 (4.92 x 5.91)
Displacement	ltr. (cu.in)	8.27 (505)	8.27 (505)	11.04 (674)	11.04 (674)
Chassis					
Carriage		2/6	2/6	2/7	2/7
Rollers (carrier/track)					
Number of shoes					
Ground clearance	mm (in)	600 (23.6)	600 (23.6)	510 (20.1)	510 (20.1)
Fuel tank (Refilled)					
Capacity	ltr. (U.S. Gal)	315 (83.2)	315 (83.2)	406 (107)	406 (107)

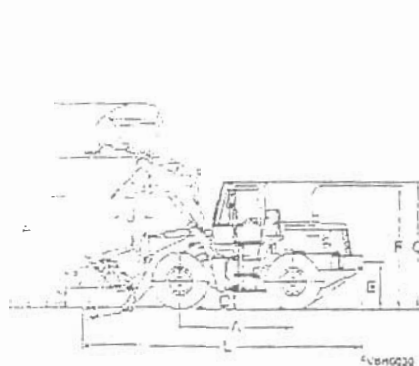
Model		D65EX-12 LT	D7GLE-2	D65E8C-2	D65E8C-2A
Operating Weight*	kg (lb)	16405 (36,170)	13850 (30,530)	15620 (34,440)	15570 (34,350)
Rated Horsepower	HP (kW)/RPM	190 (142)/1850	185 (136)/1850	180 (135)/1850	180 (135)/1850
Travel Range					
Speed	km/h (MPH)				
1st		3.9 (2.4)	2.5 (1.5)	—	3.9 (2.4)
2nd		6.8 (4.2)	3.2 (2.0)	—	6.8 (4.2)
3rd		10.6 (6.6)	4.7 (2.9)	—	10.6 (6.6)
4th		—	7.0 (4.3)	—	—
5th		—	10.3 (6.4)	—	—
Reverse 1st		5.0 (3.1)	3.3 (2.0)	—	5.0 (3.1)
2nd		8.6 (5.3)	4.8 (3.0)	—	8.6 (5.3)
3rd		13.4 (8.3)	6.7 (4.2)	—	13.4 (8.3)
4th		—	9.1 (5.7)	—	—
Swamp pull	kg (lb/kN)	—	19100 (42,310)	—	—
Dimensions					
Overall length	mm (ft.in)	4365 (14'4")	4125 (13'5")	4365 (14'4")	4365 (14'4")
Overall width (w/o fission)	mm (ft.in)	2390 (7'10")	2450 (8'1")	2330 (7'8")	2330 (7'8")
Overall height (at transport)**	mm (ft.in)	2330 (7'8")	2335 (7'8")	2330 (7'8")	2330 (7'8")
Track gauge	mm (ft.in)	1880 (6'2")	1880 (6'2")	1880 (6'2")	1880 (6'2")
Clearance of track on ground	mm (ft.in)	3285 (10'9")	2635 (8'8")	2330 (7'8")	2830 (9'3")
Engine					
Model		KOMATSU S6D125E	KOMATSU S6D125E	KOMATSU S6D125E	KOMATSU S6D125E
Cylinders		6	6	6	6
Bore x stroke	mm (in)	6-125 x 150 (4.92 x 5.91)	6-125 x 150 (4.92 x 5.91)	6-125 x 150 (4.92 x 5.91)	6-125 x 150 (4.92 x 5.91)
Displacement	ltr. (cu.in)	11.04 (674)	11.04 (674)	11.04 (674)	11.04 (674)
Chassis					
Carriage		2/8	2/7	2/8	2/8
Rollers (carrier/track)					
Number of shoes					
Ground clearance	mm (in)	510 (20.1)	510 (20.1)	510 (20.1)	510 (20.1)
Fuel tank (Refilled)					
Capacity	ltr. (U.S. Gal)	406 (107)	320 (84.5)	407 (107.5)	406 (107)

\*Operating weight includes lubricants, coolant, full fuel tank, operator and standard equipment, without blade, rear attachment, D65 and canopy.

\*\*With canopy, exhaust pipe, pre-cleaner cap or other easily removed encumbrances.

# Performance Data Dimensions

## WHEEL LOADERS



	Unit: mm (in)		
	18.4-24 tires	14.00-24 and 17.5-25 tires	15.5-25 tires
Tread	1820 (6')	1820 (6')	1820 (6')
Width over tires	2320 (7'7")	2225 (7'4")	2220 (7'3")
		2260 (7'5")	
A Wheelbase	2750 (9'1")	2750 (9'1")	2750 (9'1")
B Hinge pin height max height	3545 (11'6")	3535 (11'5")	3535 (11'5")
C Hinge pin height carry position	365 (1'2")	365 (1'2")	375 (1'2")
D Ground clearance	430 (1'5")	420 (1'5")	390 (1'4")
E Hitch height	620 (2'0")	610 (2'0")	750 (2'5")
F Overall height, top of the stack	3000 (9'10")	2990 (9'10")	2990 (9'9")
G Overall height, ROPS cab	3100 (10'2")	3050 (10'2")	3030 (10')

Equipped with 18.4-25 tires

	Buckets			
	I	J	K	L
Dumping clearance, max. height and 45° dump angle*	2720 (8'11")	2630 (8'8")	2745 (9')	2630 (8'8")
Bucket at 2130 mm (7') cut edge clearance and 45° dump angle	1395 (4'7")	1420 (4'8")	1380 (4'6")	1410 (4'8")
Bucket at max. height and 45° dump angle*	970 (3'2")	1040 (3'5")	940 (3'1")	1010 (3'4")
Bucket with arm horizontal and bucket level	2085 (6'10")	2195 (7'3")	2045 (6'9")	2150 (7'1")
Operating height (fully raised)	4700 (15'5")	4700 (15'5")	4645 (15'3")	4645 (15'3")
Arm length	6410 (21')	6520 (21'4")	6270 (20'10")	6450 (21'3")
Clearance circle (bucket at carry, outside corner of bucket)	10770 (35'4")	10840 (35'7")	10750 (35'3")	10800 (35'5")
Dump depth	0°	115 (4.5")	125 (4.9")	125 (4.9")
	10°	285 (11.2")	310 (12.2")	305 (12.1")

\*to the end of teeth or BOC

Equipped with 14.00-24 and 17.5-25 tires

	Buckets			
	I	J	K	L
Dumping clearance, max. height and 45° dump angle*	2710 (8'11")	2630 (8'8")	2715 (8'11")	2650 (8'8")
Bucket at 2130 mm (7') cut edge clearance and 45° dump angle	1405 (4'7")	1420 (4'8")	1390 (4'7")	1415 (4'8")
Bucket at max. height and 45° dump angle*	980 (3'3")	1050 (3'5")	950 (3'1")	1020 (3'4")
Bucket with arm horizontal and bucket level	2095 (6'10")	2195 (7'3")	2055 (6'9")	2150 (7'1")
Operating height (fully raised)	4690 (15'5")	4690 (15'5")	4635 (15'3")	4635 (15'3")
Arm length	6420 (21'1")	6520 (21'4")	6385 (21'0")	6490 (21'3")
Clearance circle (bucket at carry, outside corner of bucket)	10790 (35'5")	10850 (35'7")	10770 (35'4")	10840 (35'7")
Dump depth	0°	125 (4.9")	135 (5.3")	135 (5.3")
	10°	295 (11.6")	320 (12.6")	315 (12.4")

\*to the end of teeth or BOC

Equipped with 15.5-25 tires

	Buckets			
	I	J	K	L
Dumping clearance, max. height and 45° dump angle*	2680 (8'10")	2600 (8'7")	2705 (8'11")	2610 (8'7")
Bucket at 2130 mm (7') cut edge clearance and 45° dump angle	1425 (4'8")	1440 (4'9")	1410 (4'8")	1430 (4'8")
Bucket at max. height and 45° dump angle*	1010 (3'4")	1080 (3'6")	980 (3'3")	1050 (3'5")
Bucket with arm horizontal and bucket level	2125 (7')	2225 (7'4")	2085 (6'10")	2170 (7'2")
Operating height (fully raised)	4660 (15'3")	4660 (15'3")	4605 (15'1")	4605 (15'1")
Arm length	6445 (21'2")	6550 (21'5")	6410 (21')	6520 (21'3")
Clearance circle (bucket at carry, outside corner of bucket)	10935 (35'9")	10990 (35'9")	10910 (35'6")	10980 (35'8")
Dump depth	0°	155 (6.1")	165 (6.5")	155 (6.1")
	10°	325 (12.8")	350 (13.8")	345 (13.6")

\*to the end of teeth or BOC

# Performance Data Dimensions

# WHEEL LOADERS

180-3

	Capacity Heaped m <sup>3</sup> (cu.yd)	Struck m <sup>3</sup> (cu.yd)	Bucket width mm (in)	Bucket weight kg (lb)	Breakout force kg (lb)
I General-purpose bucket with bolt-on cutting edges: (Loading and excavating of soil, sand and variety of other commonly handled materials.)	1.7 (2.25)	1.55 (2.02)	2440 (8')	1710 (1570)	7940 (17500)
II General-purpose bucket with teeth	1.6 (2.1)	1.34 (1.75)	2440 (8')	865 (1470)	8570 (18890)
III Excavating bucket with bolt-on cutting edges	1.5 (2.0)	1.3 (1.7)	2440 (8')	725 (1600)	8200 (18300)
IV Excavating bucket with teeth (Loading and excavating of crushed rock and blasted rock.)	1.5 (2.0)	1.27 (1.66)	2440 (8')	675 (1480)	8360 (18600)
V Light material bucket with bolt-on cutting edges: (A lighter-weight, large-capacity bucket.)	2.2 (2.9)	1.9 (2.5)	2440 (8')	300 (760)	6590 (14530)

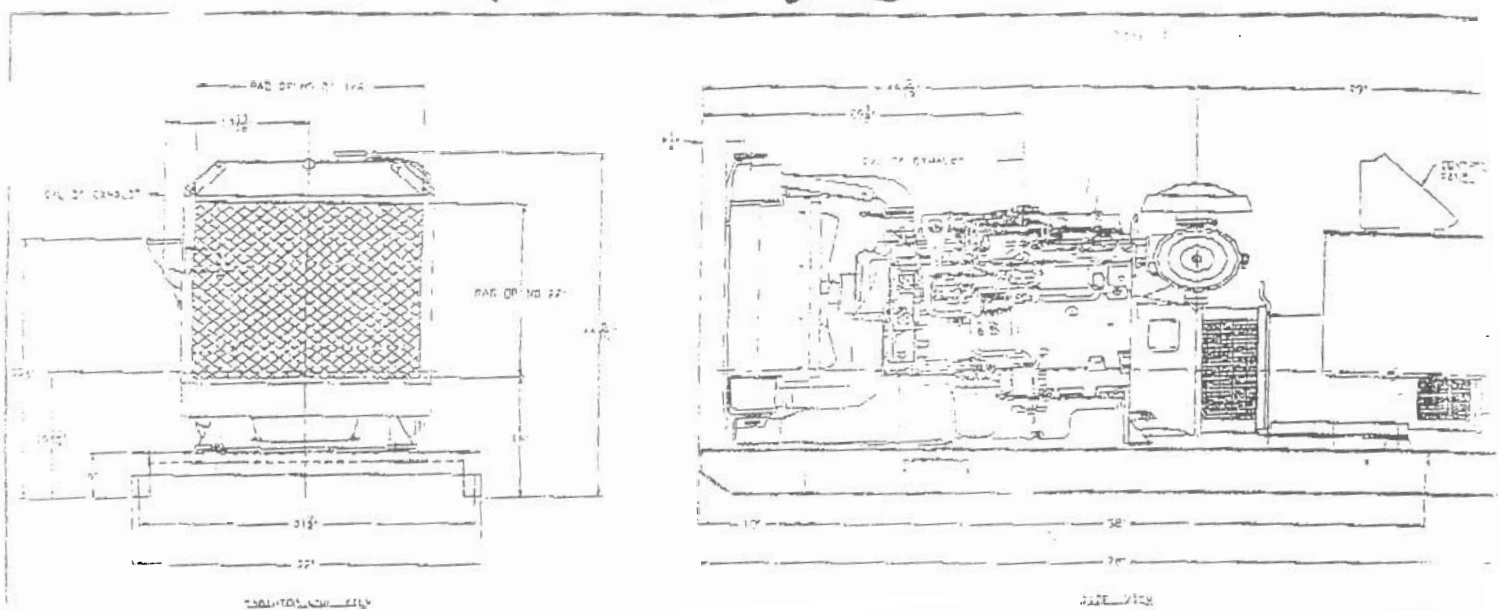
	Operating weight kg/lb				Static tipping load kg/lb											
					Straight				35° turn				40° full turn			
Bucket	I	II	III	IV	I	II	III	IV	I	II	III	IV	I	II	III	IV
180-3-12PR	5700	5555	8715	8660	7560	7620	7645	7720	6905	6860	6850	6950	6520	6630	6650	6720
	19130	19080	19210	19090	16670	16800	16860	17020	15000	15100	15100	15300	14610	14820	14820	14820
180-3-12R	3720	3675	8735	8810	7570	7630	7655	7730	6815	6870	6860	6960	6540	6650	6670	6725
	19220	19120	19260	19420	16690	16820	16880	17040	15030	15150	15150	15350	14640	14850	14850	14830
180-3-12L	8300	8755	8815	8890	7630	7690	7715	7790	6870	6920	6945	7010	6640	6690	6715	6780
	19450	19300	19430	19600	16820	16960	17010	17180	15150	15260	15300	15480	14640	14750	14810	14950
180-3-12PR	8530	8585	8645	8720	7510	7570	7595	7670	6790	6810	6800	6900	6500	6585	6610	6675
	19030	18930	19080	19220	16580	16690	16750	16910	14910	15030	15070	15210	14410	14520	14580	14720
180-3-12PR	8580	8635	8695	8770	7550	7610	7635	7710	6735	6850	6870	6940	6570	6620	6645	6710
	19140	19040	19170	19330	17090	16780	16840	17000	14920	15100	15100	15300	14480	14600	14650	14800
180-3-12PR	8750	8705	8765	8840	7600	7660	7685	7760	6840	6895	6920	6995	6615	6665	6690	6750
	19290	19190	19320	19490	16760	16890	16950	17110	15080	15200	15200	15400	14690	14790	14840	14990
180-3-12PR	8790	8745	8805	8880	7630	7690	7715	7790	6870	6920	6945	7010	6640	6690	6715	6780
	19380	19280	19410	19580	16820	16960	17010	17180	15150	15260	15300	15480	14640	14750	14810	14950

- Dimensions, weights and performance values based on SAE J732c and J742b standards.
- Static tipping load and operating weight shown include lubricant, coolant, full fuel tank, 180-3 cab and operator.
- Stability and operating weight are affected by counterweight, tire size and other accessories.
- Use the following weight changes to operating weight and static tipping load.

Weight Changes	Change in operating weight kg (lb)	Change in static tipping load kg (lb)
Remove ROPS cab	-500 (-1100)	-400 (-880)
Install ROPS canopy 320 kg (710 lb)	+180 (+400)	+140 (+310)
Install steel cab 310 kg (680 lb)	+190 (+420)	+150 (+330)
Install additional counterweight	+280 (+620)	+450 (+990)

# ATTN: ROK

# 45PS



APPROXIMATE WEIGHT PER TOWING POINT  
APPROXIMATE WEIGHT PER TOWING POINT  
ENGINE EXHAUST DRAINAGE 45.3--100

## TECHNICAL & INSTALLATION DATA

### ENGINE TECHNICAL DATA

Model	Perkins 1004G
Type	Diesel liquid cooled
Engine Speed	1800 RPM
Cylinder arrangement	4 - vertical in line
Displacement - ltrs (Cu. In.)	3.99 (243)
Bore x Stroke - cm (in)	10 x 12.7 (3.94) x (5)
Compression ratio	16:1
BMEP - kPa (psi)	936 (135)
Max power @ rated RPM - KW (hp)	52.5 (70.4)

### INSTALLATION DATA\*

#### Liquid Capacity

Total oil system - ltrs (gal)	9.6 (2.11)
System coolant cap. - ltrs (gal)	21 (4.63)

#### Electrical System

Electric volts DC	12
-------------------	----

#### Exhaust System

Gas temp. (stack) °C (°F)	690 (1274)
Gas volume - m³/Hrs (CFM)	583 (343)
Max. allowable back pressure - kPa (in. H2O)	5 (20)

### Cooling System

Ambient capacity of rad. - °C (°F)	50 (122)
Max. permissible external system restriction - kPa (psi)	35 (5)
Water pump capacity - ltr/min (gpm)	97 (21.3)
Heat rejection to coolant - kJ/h (BTUM)	162000 (2559)
Heat radiated to ambient - kJ/h (BTUM) (engine + alternator)	72900 (1152)

### Air System

Engine combustion air flow - m³/h (CFM)	189 (111)
Engine cooling fan air flow - m³/h (CFM)	4500 (2654)
Alternator cooling air flow - m³/h (CFM)	973 (572.4)
Air in min. clear opening - m² (sq. ft.)	0.39 (4.17)
Air out min. clear opening - m² (sq. ft.)	0.25 (2.65)
Maximum restriction - kPa (in. H2O)	0.12 (0.5)

### Fuel Consumption - % of full load

	ltr/hr	(gal/hr)
100%	12.8	(2.8)
75%	9.5	(2.1)
50%	6.8	(1.5)

### Note:

\*\* The above engine is rated at 20°C up to 1000 feet altitude. \*\*

\* Installation data based on standby rating.

05/15/01



**STANDBY POWER:** Operation at variable load for the duration of main power network interruption. No overload permitted.

**PRIME POWER:** Continuous operation at variable load in lieu of main power network. 10% overload is permitted for 1 hr every 12 hrs.

## AVAILABLE VOLTAGES

3 PHASE @ 0.8 PF	120/208	120/240	277/480	347/600
1 PHASE @ 1.0 PF	120	120/240		

## STANDARD EQUIPMENT

### CONTROL PANEL

- Oil pressure gauge
- Engine temp gauge
- Running time meter
- Low oil pressure shutdown
- Hi engine temp shutdown
- Start/Stop key switch
- Charge fail indicator
- 15 pin receptacle w/ mating plug & wiring harness
- Shutdown relay
- Unit fail Indicator
- DC Breaker

### ENGINE

- Air cleaner
- Full flow oil filter
- Vibration isolators
- Governor - mechanical
- Charging alternator
- Flexible fuel lines
- Fuel filter
- Radiator - unit mounted
- Electric starting motor
- Base - structural steel
- Battery cables

### GENERATOR

- A.C. generator
- Single bearing
- All models manufactured to meet NEMA MG1-22.4 and CSA standards
- Telephone influence factor is well within NEMA standards
- Wave form deviation factor is less than 5%
- Harmonic content is 3.5% maximum
- Permanently lubricated ball type bearings
- Generator is self-ventilated
- Drip-proof construction
- Brushless design
- Class H Insulation

### VOLTAGE REGULATOR

- Voltage adjust rheostat
- FMI filter (Internal Electromagnetic Interference)
- Underspeed protection
- Regulation  $\pm 1\%$
- Overexcitation protection

## OPTIONS

### CONTROL PANEL

- Optional AC meter package
  - AC Voltmeter
  - AC Ammeter
  - Phase selector switch
  - Frequency meter
- Auto Start, ECP 5 light genset control panel
- Auto Start, 9 light genset control panel w/ individual annunciating relays
- Auto Start, 18 light genset control panel w/ individual annunciating relays
- MPC 8-32 light microprocessor genset control panel
- Custom control panels available

### COOLING SYSTEM

- Remote radiator
- Heat exchanger cooling
- City water cooling
- Radiator duct flange
- Jacket water heater

### FUEL SYSTEM

- Fuel/water separator
- Above ground fuel tank
- Auxiliary fuel pump
- Sub-base mounted fuel tank
  - single wall
  - double wall
- Fuel containment tank
- Day tank

### EXHAUST SYSTEM

- Industrial grade muffler
- Residential grade muffler
- Critical grade muffler
- Flexible exhaust connector

### LUBRICATION SYSTEM

- REN oil level maintainer (with lube oil tank).
- Extended run dry sump
- Crankcase oil heater
- Oil drain extension

### ENGINE ELECTRICAL SYSTEM

- Battery
- Battery charger
- Battery rack

### GENERATOR

- Main line circuit breaker
- PMG excitation

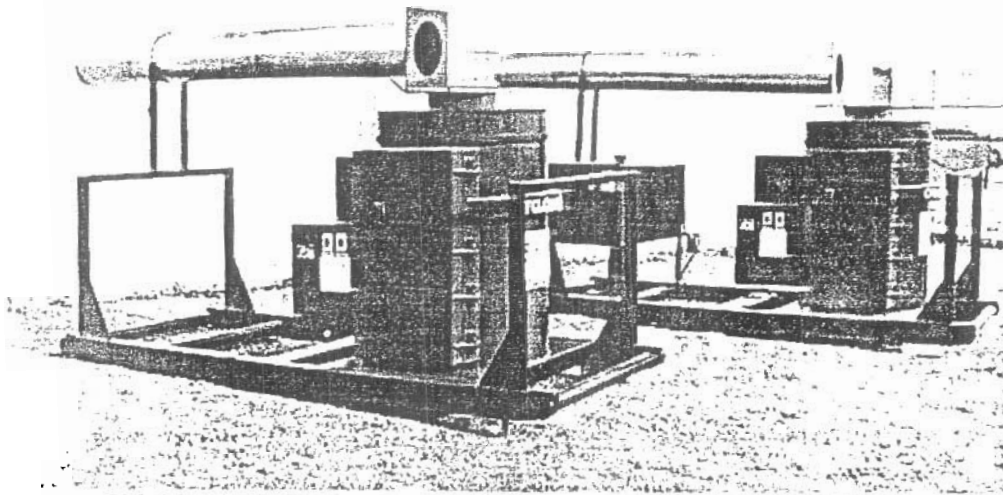
### MISCELLANEOUS

- Weather protective housings
- Sound attenuated housings
- Trailer mounting
- Electronic governor
- Remote annunciator



# WESTLAND

## SINGLE CHAMBER CYCLONATOR INCINERATOR SERIES CY1000



CY-1020-FA "N"

CY-1020-FA "D"

- Built In Safety Features
- Readily Transportable
- Economical Operation
- Clean Burning

Designed for Petroleum, Mining, and Lumber Industries

#### Capacity

0.6 m<sup>3</sup>, 64 Kg per hour  
Type No. 1, 2, & 3 waste.

#### Power Requirements

115 volts 60 cycle single phase

#### Stack

Stainless Steel - 14 gauge  
- 33 cm diameter  
- 3 m high  
- c/w stainless steel  
Spark arrester  
- a hinged base plate  
For moving

#### Casing

12 gauge steel  
Lining: high heat duty castable  
Refractory over high temperature  
Insulation

#### Hearth

Refractory hearth over 6.35 mm steel base

#### Doors

6.35-mm steel plate c/w heavy-duty blade  
Latch.

Charging: - 46 cm x 61 cm clear opening  
- Refractory lined over steel  
plate

Ash: - 46 cm x 30 cm clear opening  
- Refractory lined over steel plate

#### Air Supply

Forced air fan c/w duct to primary  
air jets and to secondary and over-  
fire air jets.

#### Timers

Cycle timer interconnected to air  
supply fan and gun type burner  
enclosed in burner housing

#### Burner

500,000 BTU gun type oil burner  
Gun burner enclosed in protective  
plate steel housing

#### Fuel Supply

450-liter fuel storage tank c/w filter  
And flexible hose type connection.

#### Transporter

Incinerator and fuel storage mounted  
On skid type frame 365 cm long x 152 cm  
Wide.  
Height: 2.13 M tall, with stack folded.  
constructed of 15 cm I Beam c/w  
bumper posts.

#### Weight

1815 Kg.

#### Options

- \* Double chamber cyclonator 2000  
series
- \* LPG Fired burner
- \* Natural gas fired burner
- \* 23 m Electric power cord
- \* Stack winch
- \* 1.4 m<sup>3</sup> model 1050.
- \* Cold climate assembly.

Head Office:

## WESTLAND

INCINERATOR CO. LTD.

20204 - 110 Avenue, Edmonton, AB Canada T5S 1X8

Phone: (780) 447-5052 Fax: (780) 447-4912

E-MAIL westland@ketek.ca

New Delhi Office:

## WESTLAND

INCINERATOR CO. LTD.

12-A Vandana Bldg, 11 Tolstoy Marg, New Delhi, India, 110001

Phone: 332-8569 or 372-0192 Fax: 372-0192

E-MAIL vishal@ketek.ca

## 25A HELICOPTER DRILL RIG WEIGHTS

<u>Item</u>	<u>Unit Weight</u>	<u>No. of Units</u>	<u>Extension</u>
1) BBS25A fly drill rig	7,000 lb.	1	7,000 lb.
2) NQ drill rods 10ft.	51 lb.	150	7,650 lb.
3) NW casing 10 ft.	70 lb.	2	140 lb.
4) NW casing 5 ft	35	2	70 lb.
5) NW casing 2 ft	14	2	28 lb.
6) HW casing 10 ft	114	10	1,140 lb.
7) HW casing 2 ft	23	4	92 lb.
8) Water supply pumps	500 lb	3	1,500 lb.
9) water line	0.6 lb/ft	7,000 ft.	4,200 lb.
10) hand tools	300 lb.	1 set	300 lb.
11) drill spares	500 lb.	1 set	500 lb.
12) set-up timbers	1,000 lb.	2 set	2,000 lb.
13) core boxes	6 lb.	25	150 lb.
14) rod grease	50 lb.	6	300 lb.
15) Lubes/Oils	50 lb.	4	200 lb.
16) Linseed soap	50 lb.	1	50 lb.
17) Misc. Fluids for drilling	50 lb.	30	<u>1,500 lb.</u>

fly rig 5  
5000 lb

sub total.....26,4200 lb.  
10% contingency.....2,640 lb.  
Total..... 29,000 lb.

1) Water consumption – using NQ tools, we would use 7-8 gallons/minute while drilling.

## Specifications for core saw

### 3HP electric motor

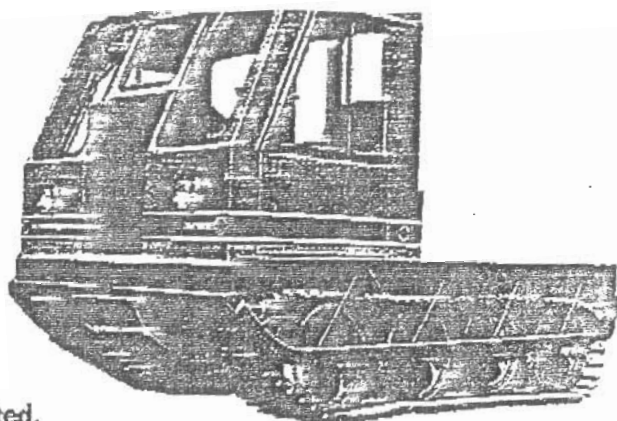
220v/15A draw  
single phase 60Hz

### Dimensions

19" wide x 39" long x 31" high  
100 kg total weight  
14" diameter diamond blade

### Water cooled blade

water pump for recirculation  
water receptacle (18" wide x 31" long x 4" high; 36 litre capacity)



## Specifications:

# MUSKEG®

## CARRIER

Options are illustrated.

### DIMENSIONS:

	S.I.	
Overall Length	3,62 m	142½"
Overall Width	2,24 m	88"
Overall Height	2,32 m	91½"
Ground Clearance	36 cm	14"
Frame Height	81 cm	32"
Shipping Weight (Basic Vehicle)	3,600 kg	7,920 lb

### OPERATIONAL:

Load Capacity	3,629 kg	8,000 lb
Maximum Speed	16 km/hr	10 MPH
Fording Depth	76 cm	30"
Inside Turning Radius	3,66 m	12'
Basic Vehicle:		
Ground Pressure at		
0"	11,17 kPa	1.62 P.S.I.
6"	9,38 kPa	1.36 P.S.I.
G.V.W.:		
Ground Pressure at		
0"	22,48 kPa	3.26 P.S.I.
6"	18,82 kPa	2.73 P.S.I.
Maximum Gradeability:		
(static test when loaded)		
Sidehill	Up to 40%	
Uphill	Up to 50%	

### ENGINE:

Make	Perkins Diesel
Model	4.236
No. of Cylinders	4
Displacement	3,87 L 236 cu. in.
Horsepower-brake	78 HP @ 2500 RPM
Governed Speed	2,500 RPM
Torque	257 N-m @ 1400 RPM (190 ft. lb)

### POWER TRAIN:

Transmission	
— Make	New Process Gear
— Type	Manual, 5 speed
— Model	542-L1

— Ratios	1 — 7.24 to 1
	2 — 4.33 to 1
	3 — 2.61 to 1
	4 — 1.59 to 1
	5 — 1.00 to 1
	Reverse — 7.22 to 1

Clutch Dry, single disc 33 cm dia.  
(13")

Speed Reducer or  
Transfer Case

— Ratio 1.56 to 1

Differential Planetary controlled  
— Ratio 3.9 to 1

Final Drive 1.61 to 1  
— Ratio

Drive Sprockets Rubber and fabric  
— Type Front

— Location Drum brake on drive line.  
Brakes — Service Simultaneous pulling of  
steering levers.

— Parking Locking device on drive line  
brake.

### STEERING:

Track-steered through the controlled differential.  
Steering levers operate brake bands on the differ-  
ential steering brake drums.

### ELECTRICAL:

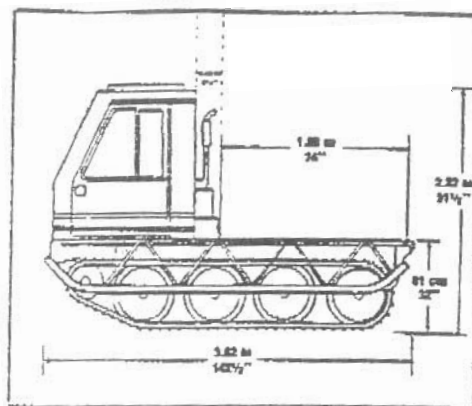
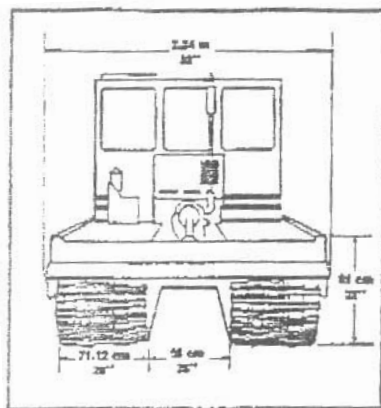
Voltage	12 V
Battery Capacity	135 amp.
Alternator Capacity	42 amp.
Ground	Negative

### SUSPENSION:

Wheels mounted in tandem.

### WHEELS:

Quantity	16
Type of Tires	4 rear solid, balance pneumatic or solid.
Size	11,43 cm × 40,64 cm (4,50" × 16") Pneumatic Tires are of Nylon fabric construction of 6 ply rating.



#### TRACKS:

Type	Rubber belts with steel crosslinks.	
Width	71.12 cm	28"
Type of belts	Rubber and fabric reinforced with steel cable.	
Width of:	Side belts (13,97 cm (5 1/2"))	
	Center belt 15,24 cm (6")	

#### CHASSIS:

Type	Toboggan, watertight
------	----------------------

#### CAB:

Choice of 1 man, 2 man or 6 man cab with escape hatch above driver's seat.  
 Safety belts.  
 Heater-defroster.  
 Windshield wipers.  
 Dual front lights.  
 One rear light.  
 One dome light.

#### CAPACITIES:

	Liters	U.S.	Imp.
Cooling System	25	6.6 gals.	5.5 gals.
Fuel Tank	104,5	27.6 gals.	23 gals.
Engine Crankcase	10,22	10.8 qts.	9 qts.

Transmission	5,68	6 qts.	5 qts.
Differential	27,25	7.2 gals.	6 gals.
Speed Reducer	1,42	1.5 qts.	1.25 qts.

#### STANDARD EQUIPMENT:

Air Cleaner — Type	Dry
Anti-freeze	To —37° C (35° F)
Fan — Type	Pusher
Instruments	Ammeter
	Engine temperature gauge
	Fuel gauge
	Engine oil pressure warning light
	Hourmeter
Seat Belt — Type	Lap
Lighting System	2 front, 1 rear, 1 dome

#### OPTIONAL EQUIPMENT:

Wheels with mechanical seals  
 Power steering  
 Engine block heater (500 W)  
 Pintle hook (front or rear)  
 Front or rear winch: 15,000 lb  
 Cold start device  
 Additional fuel tank  
 Radiator shutters

DISTRIBUTOR  
STAMP

The specifications given are for a basic vehicle and tested under ideal conditions.  
 The manufacturer reserves the right to change specifications without notice.

Polaris 325 – 4x4 Quad – for use in transporting field equipment from the esker airstrip to the camp (300m) with a small 80lb 4 wheeled quad trailer.

<b>Engine</b>	
Displacement	325 cc
Engine Type	4-stroke
Cooling	Air-cooled w/fan-assisted oil cooler
Lubrication	Wet sump
Oil Capacity	1.9 qts/1.8 ltr
Carburetion	31 mm - CV Mikuni
Fuel Capacity	3.25 gal/12.3 ltr
Coolant Capacity	N/A
Starting System	Electric with recoil backup
Alternator	200 watts
<b>Drivetrain</b>	
Drive System	Shaft Ride System
Transmission	Automatic PVT (Polaris Variable Transmission)
Gear Range	E-Z shift high/low and reverse
Front Wheel Drive	Thumb-switch engage On-Demand true 4-wheel shaft drive
Rear Wheel Drive	Shaft
<b>Suspension</b>	
Front Suspension Type	MacPherson strut with 6.7 in/17.0 cm of travel
Rear Suspension Type	Progressive rate swing arm with 7.1 in/18.0 cm of travel
Rear Shock	2 in gas-charged twintube shock with Tractionline mount
<b>Brakes</b>	
Front Brakes	Single-lever hydraulic disc
Rear Brakes	Hydraulic rear foot brake
Rear Caliper	Hydraulic, floating caliper
Rear Disc	Rear axle fixed disc
Parking Brake	Hydraulic lock, all wheel

### Tires

Front Tire 24 x 8-12 (4 psi)

Rear Tire 24 x 11.5-12 (3 psi)

### Dimensions

Wheelbase 49.75 in/126.4 cm

Turning Radius (Approximate) 85 in/215.9 cm

Dry Weight 634 lbs/287.6 kgs

Length 81 in/205.7 cm

Height 46 in/116.8 cm

Height 46 in/116.8 cm

### Capacities

Front Rack Capacity\* 90 lbs/40.8 kgs\*

Rear Rack Capacity\* 180 lbs/81.6 kgs\*

Hitch Towing Capacity\* 850 lbs/385.6 kgs\*

Hitch Tongue Capacity\* 30 lbs/13.6 kgs\*

### Electrical

Brake Light Standard

Handlebar Headlight N/A

Hood Headlight N/A

Grill Headlight 2 dual beam high/low 30/30 watt qtz halogen

DC Outlet Accessory

### Instrumentation

Speedometer / Odometer Accessory

Hourmeter Accessory

Trip Odometer Accessory

High Beam Indicator Standard

Neutral/Reverse Light Standard

High Temperature Light Standard

Snow Machine [\[Close window\]](#)

U.S.S. Country -> Mx Z 440	
<b>ENGINE</b>	
Engine	Rotax 443 Axial-fan-Cooled W / Piston porting
Cylinders	2
Displacement	436.6 cc / 26.6 in <sup>3</sup>
Bore	67.5 mm / 2.7 in
Stroke	61.0 mm / 2.4 in
Carburation	2 x VM-34 (choke)
Exhaust System	Tuned muffler
<b>POWERTRAIN</b>	
Drive Pulley Type	Cushion drive T.R.A.C.
Driven Pulley Type	Formula, cam on countershaft
Maximum speed	7000 rpm
Engagement	3700 rpm
Pulleys Center Distance	257.5 mm / 10.1 in
Small Sprocket Number Of Teeth	21
Large Sprocket Number Of Teeth	44
Drive Sprocket diameter	179 mm / 7.05 in
Brake System	Hydraulic disc. Self-adjusting
<b>CAPACITIES</b>	
Fuel	37 Liters / 9.8 Gal (US)
Recommended Fuel Type	Regular unleaded
Minimum Octane	87
Oil	2.55 Liters / 2.4 Quarts (US)
Lighting System Output (AC)	240 @ 6000 RPM
Headlamp Bulb Hi / Low Beam	1 x 60 / 55 w (H-4)
<b>SUSPENSION</b>	
Front Suspension	DSA / Swing Arm / Radius Rods Sway Bar (Formed Shape)
Front Shock	2 Motion Control Gas Shocks
Front Suspension / Max. Vert. Travel	196.0 mm / 7.7 in
Rear Suspension	SC - 10 Sport
Front Arm Shock	1 Motion Control Gas Shock
Rear Arm Shock	1 High-Pressure Gas (H.P.G.)
Rear Suspension / Max. Vert. Travel	254.0 mm / 10.0 in
<b>MATERIALS</b>	
Front Member & Frame Material	Aluminum
Hood	RRIM / Polyurethane
Belly Pan	Impact resistant copolymer
Skis	Plastic (Flex)
<b>DIMENSIONS</b>	
Vehicle Overall Length	2725 mm / 107.3 in
Vehicle Overall Width	1175 mm / 46.3 in
Vehicle Overall Height	1169 mm / 46.0 in



Official Dry Weight	201 kg / 442 lbs
Ski Stance	1041 mm / 41.0 in
Ski Overall Length	997 mm / 39 in
Ski Width	133 mm / 5.3 in
Track Nominal Width	381 mm / 15 in
Track Nominal Length	3074 mm / 121 in
Track profile height	18.4 mm / 0.72 in
<b>STANDARD EQUIPMENT</b>	
	Seating: 1 Handlebar: Straight Heated Grips / Throttle Speedometer / Tripmeter (White Facia) Fuel Gauge: Mechanical Windshield: Medium Profile Carbides: 7 Throttle: 1 Stage
<b>OPTIONAL EQUIPMENT</b>	
	Electric starter Gauge, tachometer, White facia Grill kit (adjustable) (S series), Black B-160 Heated visor quick connect kit Hitch, hook type Hitch, tongue type Mirrors, kit (S series) Nonskid strip kit, Black B-160 Proactive Control System, Black (Flex ski) Reverse mechanical Short brake lever Ski plastic (Flex), Amethyst M-530 Ski plastic (Flex), Blue B-182 Ski plastic (Flex), Viper Red B-176 Ski plastic (Flex), Yellow B-190 Ski runner (Flex) Ski steel wide (S series) Slider shoe SC-10, Amethyst Slider shoe SC-10, Black Slider shoe SC-10, Blue Slider shoe SC-10, Viper Red Slider shoe SC-10, Yellow Toe hold adjustable kit Tunnel protector kit Windshield S series (High) without windshield support Windshield S series (Low) without windshield support


[\[ Close Window \]](#)
**Disclaimer**

Because of our ongoing commitment to product quality and innovation, we reserve the right to discontinue or change specifications, prices, designs, features, models or equipment without incurring obligation.

## Hayes Camp Inventory

### Vehicles

2 Polaris Trail Touring 550 snow machines

Vin # 4XAST5B872C272209

Vin# 4XAST5BSJ2C275240

1 Arctic Cat 570 Panther Twin

Vin# 4UF03SNW83T167783

2 Yamaha Bravo's (1 is only for parts, half stripped already by Connors)

1 Running VIN # JYE8BDOD55A032132

1 Yamaha Kodiak quad

1 JD Skidder

1 Kamitik

1 quad trailer

1 yellow toboggan

1 fuel toboggan

1 8x25 sled for dozer and skidder (Nuna)

1 D6 Dozer (Nuna)

1 IT 28 (Nuna)

1 Incinerator

5 burn Barrels

6 contaminated snow/fuel drips barrels

1 45 gal spill kit

3 15 gal spill kits

*All GFJV unless stated otherwise*

Drill Foreman Tent    Tent# 1

14x16 wood-frame with insulated tent  
6 wood bed frames  
1 foamies  
1 tables  
1 chairs (CBRL)  
1 oil stove (Complete with hoses and pipe)  
1 Smoke and CO detector  
1 fire extinguisher  
1 air horn  
Complete wiring

Driller Tent    Tent # 2

14x16 wood-frame with insulated tent  
3 wood bed frames  
7 foamies  
4 tables/nightstands  
1 chairs (CBRL)  
1 oil stove (Complete with hoses and pipe)  
1 Smoke and CO detector  
1 fire extinguisher  
1 air horn  
Complete wiring  
1 Garbage can

GSH Tent    Tent# 3

14x16 wood-frame with insulated tent  
4 wood bed frames  
5 foamies  
2 tables  
2 chairs  
1 oil stove (Complete with hoses and pipe)  
1 Smoke and CO detector  
1 fire extinguisher  
1 air horn  
Complete wiring  
1 Garbage can

Repulse Bay Tent    Tent # 4

14x16 wood-frame with insulated tent  
4 wood bed frames

4 foamies  
1 tables  
1 chairs  
1 oil stove (Complete with hoses and pipe)  
1 Smoke and CO detector  
1 fire extinguisher  
1 air horn  
Complete wiring  
1 wire wheel

Second drill Tent      Tent # 5

14x16 wood-frame with insulated tent (Insulated tent is CBRL, frame GFJV)  
4 wood bed frames  
3 foamies  
1 oil stove (Complete with hoses and pipe)  
1 Smoke and CO detector  
1 fire extinguisher  
1 air horn  
Complete wiring  
**IME gear is also stored in this tent**

Rob/Ken Tent      Tent # 6

14x16 wood-frame with insulated tent  
4 wood bed frames  
4 foamies  
1 tables  
1 oil stove (Complete with hoses and pipe)  
1 Smoke and CO detector  
1 fire extinguisher  
1 air horn  
Complete wiring  
1 pr size 11 rubber boots  
1 power bar  
1 broom

Geo Haven/ Girls shack      Building #1

14x16 wood frame and hard shell building  
3 wood bed frames  
4 foamies  
1 oil stove (Complete with hoses and pipe)  
1 Smoke and CO detector  
1 fire extinguisher  
1 air horn  
Complete wiring  
1 broom  
1 shelving unit

#### Hayes Penitentiary/ Geo shack Building #2

14x16 wood frame and hard shell building  
4 wood bed frames  
4 foamies  
1 oil stove (Complete with hoses and pipe)  
1 Smoke and CO detector  
1 fire extinguisher  
1 air horn  
Complete wiring

#### First Aid Shack

14x16 wood frame and hard shell building  
3 wood bed frames  
3 foamies  
1 oil stove (Complete with hoses and pipe)  
1 Smoke and CO detector  
1 fire extinguisher  
1 air horn  
Complete wiring  
3 lrg Oxygen  
4 sm Oxygen  
2 1500w space heaters  
1 table  
1 WCB level 1 first aid kit  
1 box metal splints  
1 spine board  
1 spine board basket  
1 bag wooden splints  
20 instant cold packs  
2 box non-adherent pads  
2 box latex gloves sz med  
1 first aid tool box with 2 medical tape, 1 box dressing strip, 1 box dressing  
10 2 box soap (lever 2000)  
1 metal clip board  
1 broom  
1 dust pan

#### Logistics shack

14x16 wood frame and hard shell building 6ft walls  
2 reg fire extinguishers  
1 sm fire extinguisher  
1 1500w space heater  
1 box with 4 towels (VIP)  
1 fan  
1 backpack type water sprayer (fire)

22 4ft light tubes  
1 white board  
1 Axe (fire)  
1 pr sz 9 rubber boots  
2 chairs  
1 digitizer board  
1 roll shrink wrap  
1 3 hole punch  
1 pr scissors  
4 4L clear wood preserver  
3 4L distilled water  
1 roll bullion stickers  
1 smoke detector  
1 oil stove (CBRL)

Outside East side of core shack

3 bundle core boxes  
2 3" ABS pipe 10Ft  
2 2" ABS pipe 10 Ft  
10 EMT 1/2" 10ft  
7 1/2" rebar  
8 2x4x14  
4 2x4x16  
1 2x12x6

East side of Weatherhaven

Jutland frames and tents	CBRL
1 metal water tank	CBRL

West Side Weatherhaven

5 rolls R 12 pink insulation  
1 rolls poly

Around east side office

11 bundle lath  
26 bundle 2x2 pickets  
5 bundle trail marking lath  
1 sat phone dish stand

## Dry

1 oil stove  
3 shower stalls (2 JV 1 CBRL)  
3 hot water heaters (2 JV 1 CBRL)  
2 washers (1 JV 1 CBRL)  
2 dryers (1 JV 1 CBRL)  
2 wash tub/sinks  
2 pacto toilets  
1 roll shrink wrap  
2 big fans  
3 boxes pacto bags  
2 pressure pumps (water system)  
3 250 gal water tanks (2 JV 1 CBRL)  
1 spare pacto linkage  
1 Helmet (CBRL)  
7 bx sm garbage bags  
1 cooler  
3 water jugs  
1 mop & bucket  
2 garbage cans  
1 honda water pump 5hp CBRL  
5 lengths drill hose line (water line) CBRL  
2 mirrors  
2 smoke detectors  
1 fire extinguisher  
1 power bar  
1 broom  
Food and dry goods  
2 bags Bran muffin mix  
4 bag farkay noodles  
1 25lb bag ice tea  
10 1kg salt  
4 packs paper plates  
7 bag brown sugar  
5 800kb hollandaise sauce  
12 796ml can pumpkin  
23 700g Rice Krispies  
6 500 g lasagna noodles  
18 box kraft dinner  
2 20lb box fettuccini noodles  
24 1kg icing sugar  
12 28oz can tomatoes  
144 rolls bathroom tissue  
22 1kg bag brown sugar

- 6 2.8L can crushed tomatoes
- 4 1L Palmolive dish soap
- 7 800ml Pine sol
- 3 bx bounce
- 2 pair oven mits
- 12 560 gatoraide mix
- 1 2hp air compressor
- 2 javex

#### Office Shack

- 1 oil stove
- 1 fire extinguisher
- 1 smoke detector
- 3 hard hats
- 1 skidoo helmet
- 4 skidoo pins
- 9 chairs
- 1 ear muffs
- 8 100pac cable ties
- 6 4pac lightbulbs (60W)
- 8 power bars
- 30 ceiling balloons (weather balloons)
- 2 case bug spray
- 18 used blades (core saw)
- 1 soft rock blade      Core saw
- 10 hard rock blades      Core Saw
- 5 reg rock blades      core saw
- 1 fire extinguisher
- 1 small battery      (Survey use)
- 1 4L jug camp fuel
- 1 Helium bottle
- 3 white boards
- 4 safety glasses
- 4 replacement lens for safety glasses
- 1 new bung wrench
- 1 co-axel cable for FM radio approx 25ft
- 1 box dead batteries
- 5 6v batteries
- 1 box field gear (see Rob L inventory)
- 2 cordless phones (Vtech 2.4 ghz 3.6v 400 mah Ni-cd battery # 80-5074-00-00)
- 2 smoke detectors
- 1 pr sz 7 rubber boots
- 4 sm fire extinguisher CBRL
- 1 skidder cable
- 2 skidder fuel filter
- 16 9v batteries



- 24 AA batteries
- 1 crescent wrench
- 1 15kw generator manual
- 2 brooms
- 1 weather monitor
- 2 rolls plotter paper
- 1 HP Plotter
- 5 map tubes
- Misc printer and plotter disks
- 1 roll bullion stickers
- Various size CBRL and GFJV stickers
- 2.5 pacs legal paper
- 3 pacs letter paper
- 25 700mb CDR cd's
- 50 lrg legal envelopes
- 2 Apex safety manuals
- 5 2" binders
- 1 smc 16 port 10/100 Mbps dual speed switch
- 1 set of speakers sub woofer
- 1 engineer scale
- 1 desk brush
- 1 straight edge
- 1 meter stick
- 2 staplers
- Misc pens and pencils
- 100 legal file folders
- 1 rolling file hanger with 2 drawers
- 25 felt markers
- Sticky notes / memo pads
- 1 3hole punch
- 1 box crayon pencils
- 1 folding table
- 1 brother 775 fax machine
- 1 HP officejet 5510 all-in-one printer/fax/scan
- 2 clip boards
- 1 metal clip board CBRL
- 1 18v Black & Decker firestorm cordless drill
- Gps manuals
- Metal deakin box with CBRL stuff
- 7 metal clip boards, 2 maps bags, wax pencils, misc stationary (pens, staples, elastic bands)

#### Kitchen Shack

- Out side      3 deep freezers      (2 JV 1 CBRL)
- 2 gas range      (1JV 1CBRL)
- 2 hood vents

1 Microwave  
1 CBRL fridge freezer combo  
1 cd player  
1 fridge  
1 4 slice toaster  
1 TV  
1 DVD/VHS combo player  
1 oil stove      CBRL  
2 fire extinguisher

## **Hayes Camp Inventory**

### **Discovery Box beside Genny Shack**

3, 4 litres of methyl hydrate  
21 synthetic 0W30 engine oil (4 litres)  
5, 5 gallon pails of 15W40 Rotella oil  
5 full spools of 14-2 lumex wire  
4, 12 volt full size battery  
1, 12 volt small battery  
1 wobble pump broken  
4 Bravo ski rods  
1 air pump  
1 paint roller  
1 electrical fan  
1 ice scoop

### **Inside old genny box**

7, 2inch flexible water line CBRL (3 grey – bad, 4 blue – good)  
1, 40 feet 10-3 stranded wire  
40 feet, 1inch hose line CBRL  
2 double sinks CBRL  
Miscellaneous stove pipe and elbows 80% CBRL  
15 metres ABS water line, 1 ½ inch (outside box)  
90 feet, tech cable, 1000 volts 14 gauge x (times) 4 GFJV (on top of box)  
50 feet, ¼ inch water line (outside box)

### **Weather Haven**

Electrical Box - Deakin Metal box, GFJV

46 receptacle boxes  
22 junction boxes  
31 self grounding duplex receptacles  
20 EMT connectors  
45 wire staples  
6 light switches  
20 receptacle covers  
2 balis'  
30 lumex connectors  
1 box of 100 wire connectors plus 25 loose  
3 carbon monoxide detectors  
3 plastic pull chain lamp holder

3 GFJV ski-doo helmets

2 CBRL ski-doo helmets  
1 microwave CBRL  
2 tarps big blue  
11 oil stoves, 10 CBRL, 1 GFJV  
1 red cooler with dust masks  
1 Deakin metal box with plumbing supplies  
1 box with oil stove hose  
2 CBRL propane stoves  
1 electric grill CBRL  
2 propane bbq's CBRL  
1 roll of poly  
10 foamies  
1 water heater GFJV  
13 thermo rests CBRL  
8 cots, 6 GFJV, 2 CBRL  
Box of miscellaneous plumbing supplies  
3 jet pumps  
1 metal box with U bolts, tension bolts, and water heater parts  
Card board box with dryer parts  
1 water pump  
1 starter  
6 paint roller roll  
2 boxes of John Deer oil and air filters  
1 compressor  
Box of wire staples  
Can of wood finish  
4 rolling pans (paint)  
3 jugs of wood filler  
4 open cans of paint, various colours  
2 ATV batteries  
Cooler with various heating, plumbing and electrical stuff  
3 big air filters, John Deer  
2 big air filters, not John Deer  
3 full size 12 volt batteries  
Blue box with electrical wire  
1 shop vac  
Roll of nylon screen  
3 bags of marking blocks  
6 cans of 2 cycle ski-doo oil  
1 miner's belt  
Box of fuel filters  
5 eye wash stations in orange garbage bag  
3, 5 gallon pails  
1 rake  
3 jugs of Peak anti-freeze  
2 Honda generators CBRL

- 2, 5 gallon jerry cans
- 2 big propane heaters GFJV
- 1 chair
- 1 wobble pump
- 1 garbage can lid
- 1, 2.5 gallon jerry can
- 1 wooden table
- 6 cans of paint
- 3 rolls of plastic wrap

### **Core shack**

- 13 standard D
- 37 standard C
- 26 Standard B
- 73 blank pulp
- 20 thick black rubber bands
- 1 microscope CBRL
- 19 sample books
- 2 packages of 500 aluminum tags
- 1 first aid kit
- 1 litre bottle of 10% HCl
- 3 partial boxes of mosquito coils
- 2 small sledge hammer
- 5 assorted Bungee cords
- 1 corn broom
- 1 crow bar
- 1 can air freshener
- 2 small hand brooms
- 1 partial bag zap straps
- 1 core box rack
- 2 boxes tractor parts
- 1 box assorted rock samples
- 1 box security seals (1/4 full)
- 7 boxes of 10 dymo rolls and 1 partial box
- 10-12" spikes
- 8 cans orange spray paint
- 2 tin pails
- 4 bags zap straps
- 1 bag assorted lumber crayons
- 1 container assorted lumber crayons
- 4 boxes black lumber crayons
- 5 boxes red lumber crayons
- 1 box yellow lumber crayons
- 10 black china markers
- 4 blue markers

- 1 black marker
- 1 metal Dymo gun CBRL
- 1 plastic Dymo gun CBRL
- 1 box assorted flagging tape
- 1 bag marker blocks
- 4 boxes of sample bags. 1 partial
- Rice bag full of felt material
- Box containing 18 cans orange and 2 blue spray paint
- 1 thermal rest CBRL
- 1 pair tin snips
- 1 long handle rock hammer
- 3 sledge hammer head
- 2 rolls masking tape
- 2 tape measures
- 1 partial black coarse pail
- 2 benches
- 1 water sprayer
- 1 folding table
- 1 header core photos
- 1 sieve kit CBRL
- 4 bags rice bags
- 1 file
- 1 staple gun
- 1 water jug
- 1 rubber maid with 4 hip chains, spare chain, and 1 can bear spray
- 1 pail plastic cement
- 3 APEX field packs (one contains chopper flag and 1<sup>st</sup> aid kit)
- Red cooler with assorted survival food
- 2 air horns
- 3 tents
- 2 sleeping bags
- 1 oil stove
- 3 boxes assorted survival food
- 1 garbage can
- 1 cloth bag
- Axe
- 1 fire extinguisher
- 10 light fixtures
- 1 smoke detector
- 2 hard hats CBRL
- 1 dust mask
- 1 face shield GFJV
- 1 electrical box
- 1 core logging manual
- 1 mouse pads
- 1 roll fiber tape

- 1 pad grid paper
- 1 navigational protractor
- 2 orange extension cords
- 1 pair earmuffs GFJV
- 3 paint brushes
- 1 hacksaw
- 1 desk lamp GFJV
- 1 Kappa metre CBRL
- 1 pair scissors
- 1 digital camera clamp
- 1 eyewash station
- 1 coil nylon rope
- 1 box till bags
- 4 Arctic bags
- Gold wheel
- 3 regular sleeping bags
- 2 pairs snow shoes
- 4 tents (not so good)
- 1 stapler
- 3 MEC tents: 2 Monadnock (1 broken black poles, 1 broken fly; 2 broken black pole)  
1 Nanatak (complete)
- 6 Woods Parkas
- 1 red field bag
- 8, 1 litre propane bottles
- 1 arctic boggan

### **Cut shack**

- 2 saws
- 3 garbage cans
- 2 dish pans
- 1 crescent wrench
- 1 saw wrench
- 1 small sledge
- 2 pair earmuffs
- 8 dust masks
- 1 bag of used heavy duty orange rubber gloves
- 2 eyewash stations
- 1 putty knife
- 1 small file
- 1 sample bag holder
- 1 wire brush
- 1 partial box earplugs
- 2 overhead vent fans
- 1 oil stove
- 1 role tubing

- 1 raincoat
- 1 rain pants
- 1 rubber bib
- 4 used saw blades
- 1 large file
- 1 fire extinguisher
- 1 smoke detector
- 3, 5 gallon water jugs
- 5, light balleis
- Core racks
- 1 partial box of zap straps
- 1 partial box of sample bags
- 3 pairs safety goggles
- 2 cans orange spray paint
- 1 partial box matches
- 8 buckets of coarse blank
- 1 spare pump

### **Genny Shack**

- 1 anti freeze tester
- 4 trouble lights
- 1 tiger torch
- 3 Polaris fan belts
- 3, 25 metre extension cords
- ½ bag enviro mats
- 1 new smoke/CO detector
- 1 battery charger
- 2, 18 inch pipe wrench, 1 GFJV and 1 CBRL
- 1, 24 inch pipe wrench
- 2, 4 foot levels
- 1, 2 foot levels
- 1 small cross cut saw CBRL
- 19, 1 litre 10W30 oil
- 9, 1 litre 2 cycle Polaris oil
- 1 can spray foam
- 2 cans rust paint
- 2 tubes multi-purpose sealant
- 1 tube kitchen/bathroom sealant
- 3 sheets sand paper
- 1 large carpenter square
- 4 skill saws, 2 GFJV and 2 CBRL
- 2 mop handles
- 2 ice auger engines CBRL, 1 Jiffy and 1 Strikemaster
- 3 extensions for auger
- 15 tubes grease



15 bottles diesel fuel treatment 8oz  
8 fuel de-icer for Polaris  
30 propane plugs  
5, 4 litres 5W30 Quaker State  
1, 4 litres transmission lubrication  
3, 4 litre premixed anti-freeze Polaris  
5, 4 litre heavy duty diesel anti-freeze  
1, 4 litre methyl hydrate  
2, 20 litres 0W30 synthetic blend  
1, 5 gallon Tellus 10 spindle oil  
1, 5 gallon 15W40  
1, 8 pound maul  
2, 3 pound mauls  
1 crowbar  
3 BPR6ES  
1 screwdriver set  
1, jig saw GFJV  
1, quarter 8 socket set  
3 sunflower heaters  
1 metal box with various sized nails  
2 flash lights  
1 roll of hay wire  
½ roll all round  
1 measuring tape  
1 set Olfa blades  
1 hammer CBRL  
1 air pump  
1 broom  
1 power bar  
1 paint pan  
2 Bravo fan belts  
2 funnels  
1 drum funnel  
1 wobble pump  
2 back country 1<sup>st</sup> aid kits  
1 fire extinguisher  
2 genny air filters  
4 fuel filers – genny  
5 water separator filters  
1 emergency spill kit  
1 box various sized nuts/bolts/washers  
2 15 kilo-joule gennys

### **Big Black tool box GFJV**

4 hammer handles

- 1 set drill bit
- 1 O-ring crimping tool CBRL
- 1 roll, 12 gauge Primary wire
- 2 new circular saw blades
- 2 new jig saw blades
- 1, 25 piece Allen key set
- 2 multi metres
- 3 hack saws
- 2 angle squares
- 2 staplers
- 1 soldering case
- 1 roll of solder
- 6 boxes of staples
- Makita various jig saw blades
- 5 hack saw blades
- $\frac{3}{4}$  inch wood bit
- 3 caulking guns

#### **Small yellow tool box GFJV**

- 2 multi metres
- Various wire connectors
- 2 wire stripers
- 1 wire cutter
- 1 pair side cutters

#### **Large yellow tool box**

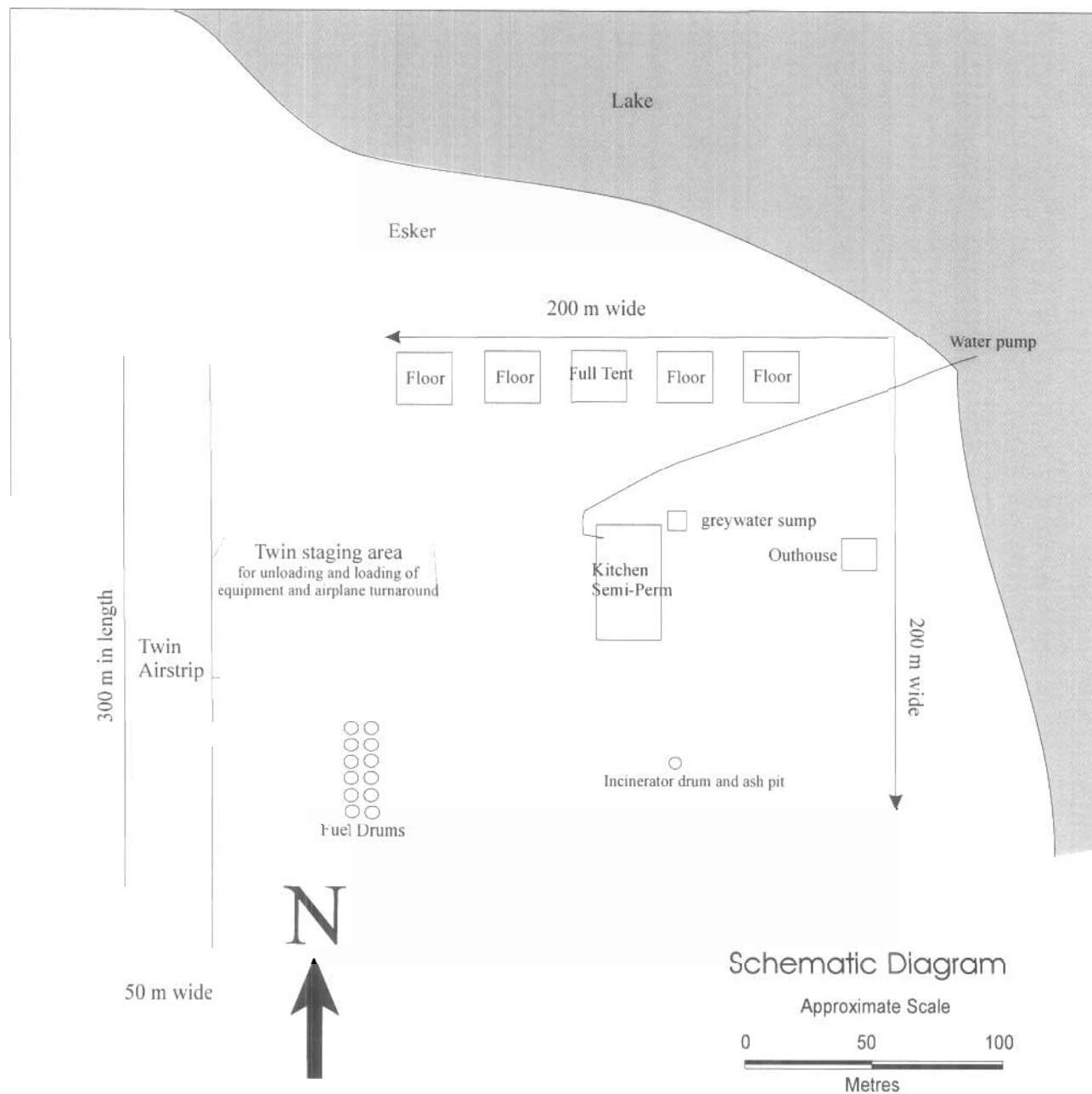
- 3 auger extensions
- 1, 50 Jiffy 1801 ice auger blade
- 1 Strikemaster Mag 3000 ice auger blade

#### **Large Red tool box**

- 6 various Allen keys
- Various wrenches
- 1 metric wrench set
- 1 imperial (minus  $\frac{3}{4}$ ) wrench set

#### **Small red tool box GFJV**

- 2 tubes J-B weld
- 6 chisels, 3 with handles
- 1 rivet cutter
- 200 rivets
- 1 tin snipes



## Crater Lake Camp and Airstrip Layout

The camp is used as a base for grassroots mineral exploration, with Twin Otter and/or helicopter support. The Camp and Airstrip were built in 1997 and have since been used intermittently during the summer exploration season. The airstrip is a natural gravel strip that was originally hand-picked to remove larger boulders. No mechanical strip preparation was required for Twin Otters equipped with tundra tyres. Equipment (fuel, lumber, staking posts, etc) and personnel and crew members have been mobilised in and out of camp using the airstrip and/or helicopters.

## Crater Camp Inventory

Quantity	Item
6	wood floors for tents (14x16')
2	weatherhavens
1	propane oven
5	fawcett oil stove
1	outhouse
2	core tables
12	45gal drums (empty)
2	tables
1	shower
1	water heater
4	snow caps
1	sink/wash tub
1	7kW diesel genie

### Fuel

- 3 sealed Jet B
- 3 full P-50
- 3 partials P-50
- 2 empty propane cyliners