



Gibson MacQuoid Project

Kivalliq Inuit Association: Land Use Permit KVL117B04
NIRB Project Reference Number: 17EN029

Annual Report

2017

North Country Gold Corp.
November 2017

1.0 **TABLE OF CONTENTS**

1.0	TABLE OF CONTENTS	1
2.0	DISTRIBUTION	3
3.0	BACKGROUND	4
4.0	PROJECT DESCRIPTION	4
4.1	Camps	7
4.2	Caches	7
4.3	Deposit	7
4.4	Regional Prospects	7
5.0	2017 WORK ACTIVITIES	9
5.1	Mineral Exploration Activities	9
5.1.1	Till Sampling	9
5.1.2	Aerial Drone Imagery	11
5.2	Camp Usage	13
5.3	Consultation	13
5.4	Expenditure	13
6.0	LAND USE INSPECTIONS	13
7.0	WATER	13
8.0	WILDLIFE	14
9.0	SPILLS	14

List of Tables

Table 1: GMP Permits and Licences	4
Table 2: Wildlife sightings - 2017	14

List of Figures

Figure 1: Gibson MacQuoid Project Overview	6
Figure 2: Gibson MacQuoid Project Mineral Occurrences	8
Figure 3: Typical Till Sampling Station	9
Figure 4: 2017 Till Sampling Coverage	10
Figure 5: Drone taking off – GMP, August 2017	11
Figure 6: Typical 2017 UAV image	11
Figure 7: 2017 UAV coverage	12

List of Appendices

Appendix 1: 2017 Community Consultation Logs.....	14
Appendix 2: 2017 Wildlife Observation Logs.....	14

2.0 **DISTRIBUTION**

Organization	Distribution Email
Indigenous and Northern Affairs Canada (INAC)	landsmining@aandc.gc.ca
Environment Canada (EC)	enviroinfo@ec.gc.ca
Government of Nunavut – Department of Environment (GN-DOE)	environment@gov.nu.ca
Kivalliq Inuit Association (KIA)	lmanzo@kivalliqinuit.ca, bosmond@kivalliqinuit.ca, gkarlik@kivalliqinuit.ca
Nunavut Impact Review Board (NIRB)	info@nirb.ca
Nunavut Water Board (NWB)	licensing@nunavutwaterboard.org

3.0 **BACKGROUND**

Auryn Resources Inc. ('Auryn') is a Canadian based junior mineral exploration company focused on the acquisition and development of prospective mineral projects in established mining districts globally. North County Gold Corp. (NCGC) is a wholly own subsidiary of Auryn and is the operator of the Gibson-MacQuoid Project (GMP). Auryn's management team is highly experienced with an impressive track record of success in discovery and development, including the advancement of two gold projects located in West Africa and Mexico.

Auryn's exploration strategy for the Gibson MacQuoid Project is to identify deposits within the Gibson MacQuoid Belt via regional grassroots exploration. Innovative and cost-effective exploration techniques form a large part of the exploration strategy for the GMB. Unmanned Aerial Vehicles (UAV) photography is used to this end by minimizing the use of helicopters and reducing the overall environmental impact of the exploration activities.

The GMP is made up of mineral claims and prospecting permits located on Crown Land and surface Inuit Owned Lands (IOLs) which are subject to the Nunavut Land Claims Agreement (NLCA). See Table 1 for GMB permits and licences for grassroots exploration activities on the GMP. As per discussions with the Kivalliq Inuit Association, no work was conducted on Inuit Owned Lands at any time within the Core Calving or Post Calving Ranges. Additional measures were taken to further mitigate any unnecessary impact on the Caribou Calving ranges. These measures included commencing the project on August 4th, a full three weeks after the July 15th date defined within the Nunavut Land Use Plan, as well as avoiding activities where caribou were spotted.

Organization	Description	Permit/Licence #
Nunavut Impact Review Board (NIRB)	Project Reference Number	17EN029
Kivalliq Inuit Association	Land Use Licence	KVL117B04

Table 1: GMP Permits and Licences

4.0 **PROJECT DESCRIPTION**

A land package of 57 mineral claims and 19 prospecting permits currently comprise the GMP. This land package lies within a 120-km long corridor of greenstone belt positioned sub-parallel to greenstone belts hosting Agnico Eagle's Meadowbank and Meliadine Mines, within the Kivalliq region of Nunavut Territory. The location and distance to local communities can be seen in Figure 1.

The GMP covers approximately 387,461 hectares with several gold occurrences in close proximity. Historic sampling in the area has returned values up to 230 g/t Au. No camp sites were established on the GMP in 2017. The 2017 exploration program was based out of Baker Lake only.

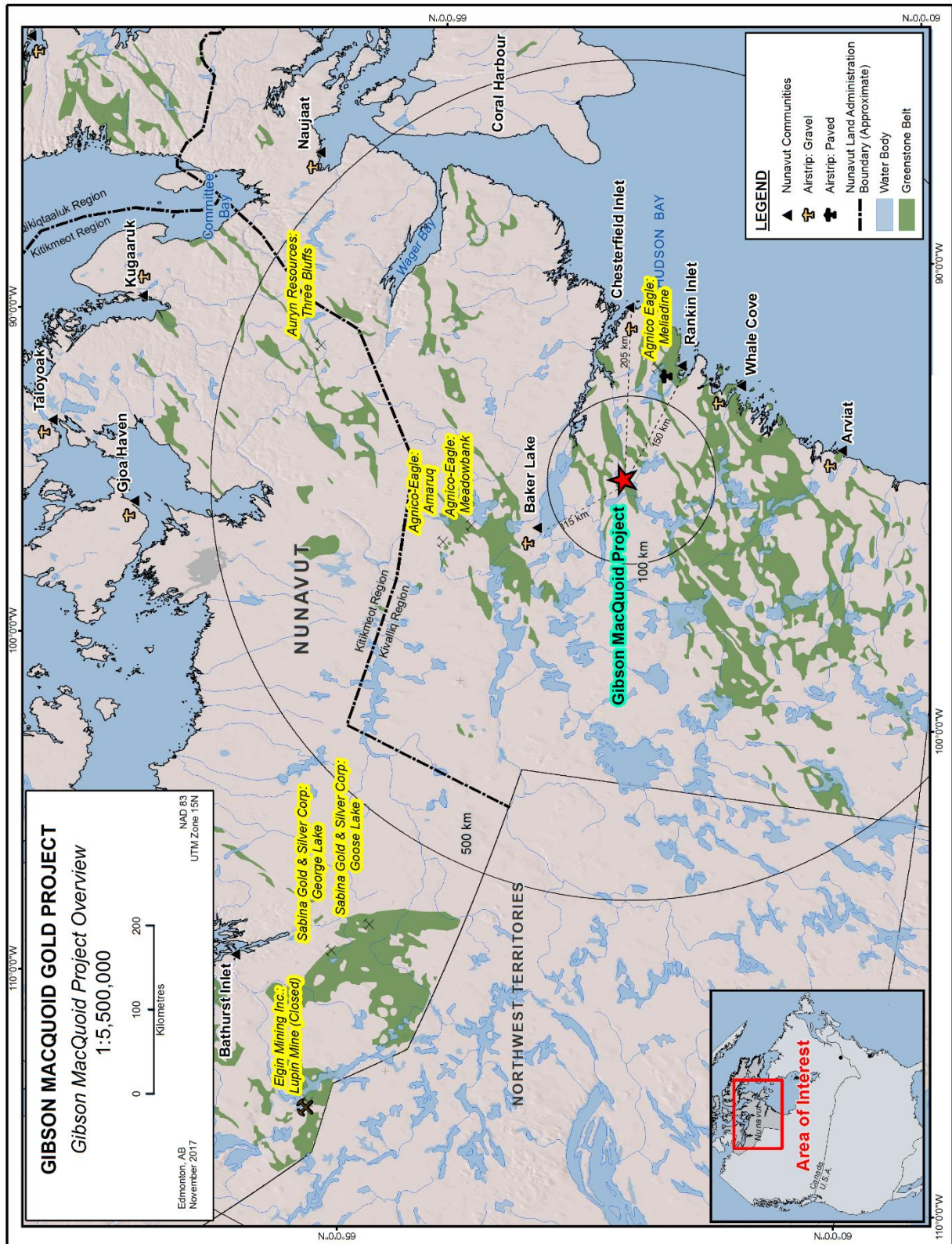


Figure 1: Gibson MacQuoid Project Overview

4.1 Camps

No camps were established during the 2017 exploration season.

4.2 Caches

No caches were established during the 2017 exploration season.

4.3 Deposit

No deposits have been identified to date.

4.4 Regional Prospects

The GMP is a grassroots exploration stage project stretching over 120 km of prospective greenstone belt with several high-grade gold occurrences identified during historic exploration campaigns.

Agnico-Eagle's Meliadine producing gold mine situated to the southeast of the GMP area, is hosted by similar lithologies as encountered on the Gibson MacQuoid Greenstone Belt (Figure 2).

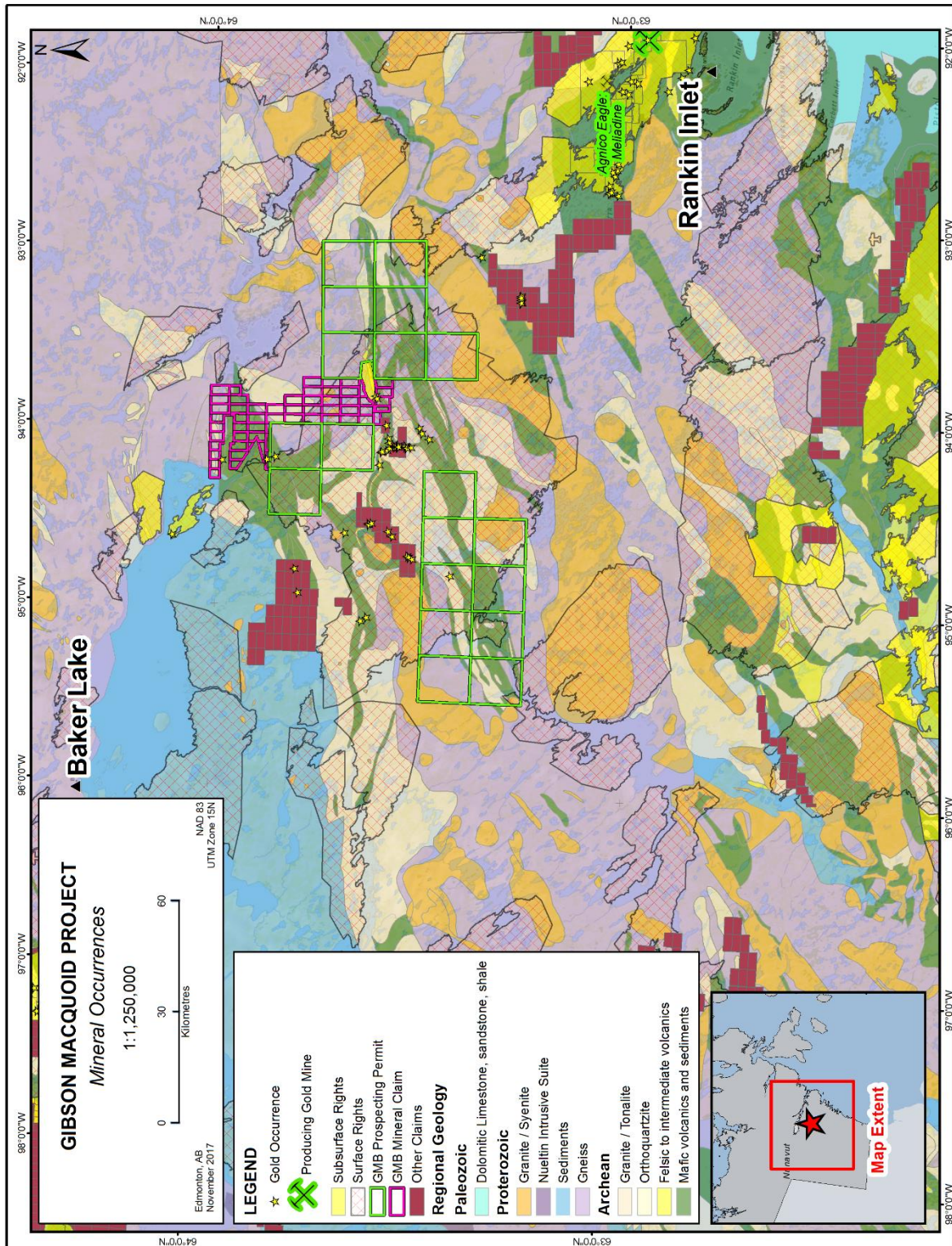


Figure 2: Gibson MacQuoid Project Mineral Occurrences

5.0 **2017 WORK ACTIVITIES**

The 2017 exploration program comprised regional till sampling and collection of high resolution imagery via Unmanned Aerial Vehicle (UAV) surveying, along with staking 57 new claims. Activities occurred on mineral claims and prospecting permits on both Crown and Inuit Owned surface lands.

5.1 Mineral Exploration Activities

5.1.1 Till Sampling

Regional till geochemical sampling was undertaken to identify anomalous zones for further exploration and potential drill targets. The regional till sampling program comprised 2,782 samples (Figure 3 and 4).



Figure 3: Typical Till Sampling Station

5.1.2 Aerial Drone Imagery

An aerial drone survey was flown during the 2017 field season to provide high resolution imagery and digital terrain models covering the entire GMP (Figure 5, 6 and 7). Approximately 1,048 km² of imagery and digital elevation data was collected at a resolution of approximately 10 cm.



Figure 5: Drone taking off – GMP, August 2017

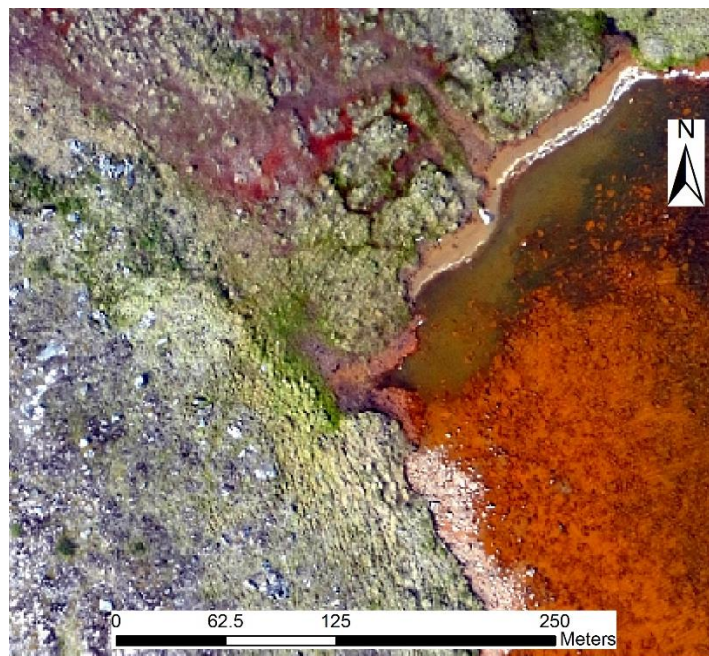


Figure 6: Typical 2017 UAV image

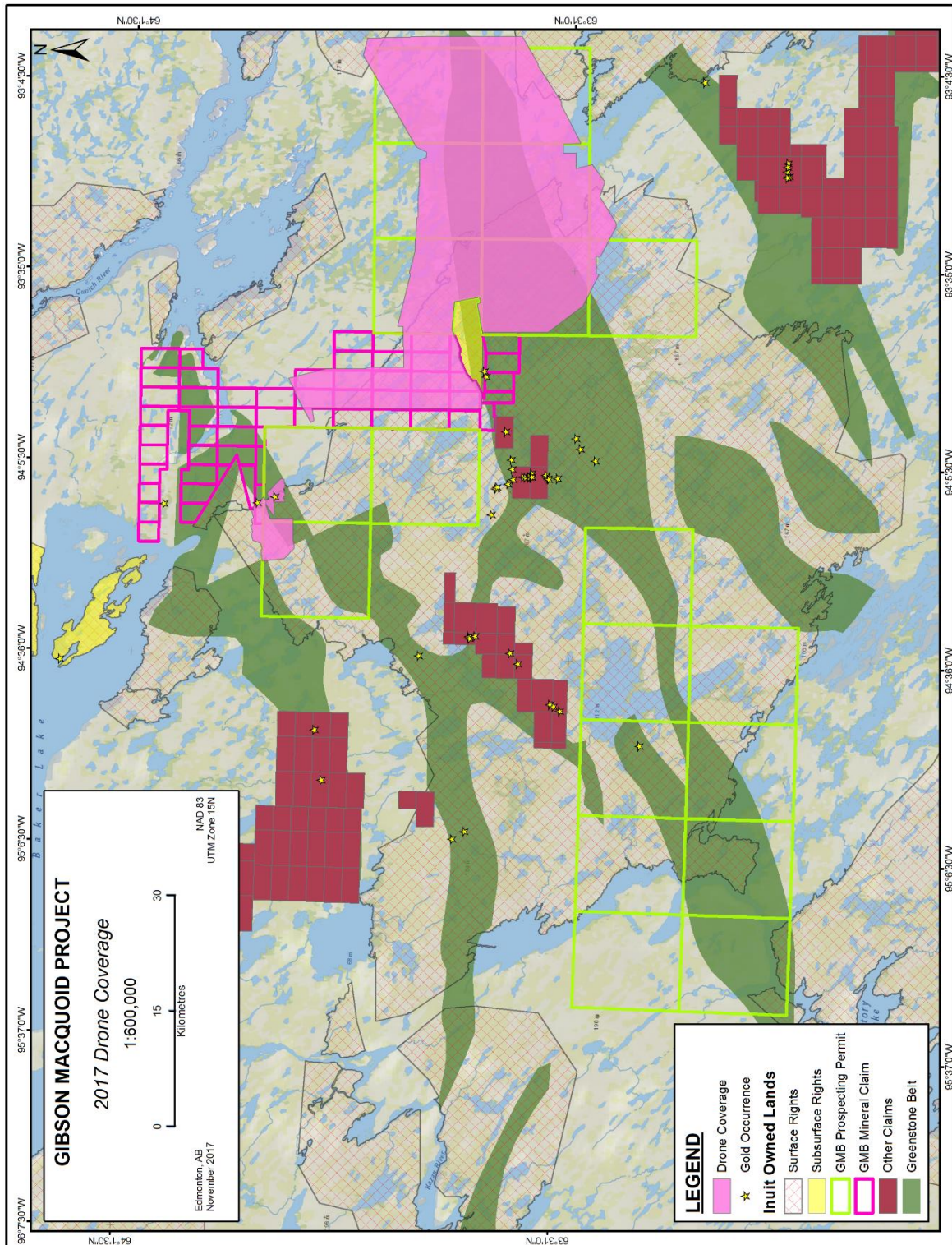


Figure 7: 2017 UAV coverage

5.2 Camp Usage

No camps were used or established during 2017 at GMP.

5.3 Consultation

During the latter part of May 2017, NCGC representatives briefed the Rankin Inlet community on the planned activities at GMP for the 2017 field season activities. Due to inclement weather conditions, the Baker Lake and Chesterfield Inlet communities could not be reached by air. Details of all community consultations during and before the 2017 field season are provided in Appendix 1.

5.4 Expenditure

Approximately \$816K was expended with northern businesses. This accounts for ~51% of the total \$1.6 million in expenditures during the 2017 field season. Northern businesses involved in the 2017 program included:

- Arctic Buying Company
- Baker Lake Lodge
- Buffalo Airways
- Kivallingmiut Helicopters
- Northern Comm and Nav Systems Ltd.
- Ookpik Aviation Inc.
- SK Construction Ltd
- The North West Co. Inc.

6.0 LAND USE INSPECTIONS

No Land Use inspections were conducted by INAC during the field season at GMP.

7.0 WATER

No water was used from sources from the GMP area during 2017.

8.0 **WILDLIFE**

NCGC recognizes that the GMP is located within a diverse ecosystem with abundant flora and fauna. As part of our efforts to mitigate any impact on the local wildlife populations NCGC has a wildlife reporting system in place. Scanned copies of the Summer season wildlife sightings at GMP are attached as Appendix 2. Table 2 summarizes the wildlife sightings by species for the Summer 2017 field season.

Species	Recorded sightings
Wolverine	2 large, 3 small
Wolf	1
Arctic fox	2
Caribou	1
Muskox	2 herds
Grizzly bear	1

Table 2: Wildlife sightings - 2017

NCGC is committed to continue to monitor wildlife throughout the GMP in order to mitigate any and all effects on wildlife.

9.0 **SPIILLS**

No spills occurred during 2017.

Appendix 1: 2017 Community Consultation Logs
Appendix 2: 2017 Wildlife Observation Logs

Appendix 1

2017 Community Consultation Logs

**Community Consultation / Communication Log –
Auryn Resources / North Country Gold, GM Project
August 9, 2017 03:11 PT**

(Acronyms :) DL = Denise Lockett, PR = Peter Rees, BA = Bryan Atkinson, SAO = Settlement Administrative Officer, EDO = Economic Development Officer, HTO = Hunters and Trappers Organization, NIRB = Nunavut Impact Review Board, NPC = Nunavut Planning Commission, GN = Government of Nunavut, NWB = Nunavut Water Board, INAC = Indigenous and Northern Affairs Canada, KIA = Kivalliq Inuit Association,

Date	Time	Contact	Details
May 4, 2017	10:57	Rankin Inlet Hamlet, HTO, Chesterfield Inlet Hamlet, HTO, Baker Lake Hamlet HTO	<p>Hello:</p> <p>I am travelling in the Kivalliq Region with Bryan Atkinson of Auryn Resources to hear of any possible issues or concerns related to their early stage exploration project near Baker Lake.</p> <p>We are looking at holding a public meeting in Rankin Inlet May 23 and have time to meet with the KIA, INAC as well as the MLA's either Tuesday the 23rd or Wednesday the 24th until 2 p.m. Please let me know if there is an opportunity to get together. Also if you have Johnny's contact details for translation I would appreciate it.</p> <p>On Wednesday May 24 we will be travelling to Chesterfield Inlet and would like to hold a public meeting that evening. Shawn, is the Hamlet Chambers available and who could translate?</p> <p>On Thursday May 25 we travel to Baker Lake and plan on holidaying a public meeting that evening. Can someone please recommend a translator? Please let me know if there are any conflicts with these suggested dates.</p> <p>Kind regards</p>

May 5, 2017		Chesterfield Inlet SAO	Email from, to DL re: We have booked the Chambers for you I will look for a translator too Thanks Shawn
May 10, 2017	10:35	Chesterfield Inlet SAO	Email from, to DL re: Hello Denise I would recommend you change the date if you can, as I do not think you will have a good turnout May 23 is hamlet day in Chesterfield Inlet There is also events on the 24 and 25 and a fishing derby May 19-22 Please call and we can discuss Thanks Shawn
May 10, 2017		Chesterfield Inlet SAO	Email to, from DL re: Ok. I will check with aurnyn
May 10, 2017		Chesterfield Inlet SAO	Email to, from DL re: Best I can do is move it to the evening of may 25. d
May 11, 2017		Chesterfield Inlet SAO	Email from, to DL re:Ok Denise Thanks
May 11, 2017		Chesterfield Inlet SAO	Email to, from DL re: Are we able to book the council chambers for 7 pm may 25?
May 11, 2017		Chesterfield Inlet SAO	Email from to DL re; Yes you can have that one too
May 18, 2017		Rankin Inlet Hamlet, HTO, MLA, GN Dept of ED & T	Email to from DL re: Hi, see attached poster for a public meting in rankin inlet next Monday evening with Aurnyn Resources. Can someone please

			<p>go on public radio. And help to distribute the poster?</p> <p>Denise A Lockett</p>
May 18, 2017		Baker Lake Hamlet, HTO, MLA	<p>Email to, from DL re: Hello:</p> <p>See attached poster for distribution in the community. Can someone please go on public radio to ensure a good turnout. I look forward to seeing everyone again.</p> <p>I am looking for an interpreter for the meeting also.</p>
May 18, 2017		Chesterfield Inlet Hamlet, HTO, MLA	<p>Email to from DL re: Hello: see attached posters for distribution around town, and notification for community radio. I will be coming in with Auryn Resurces on May 25 for a community meeting at the Hamlet Chambers. Can you please let me know if someone is available to interpret.</p> <p>Kind regards and I am looking forward to seeing everyone again</p>
May 18, 2017	09:36	R. Connelly GN Dept of EDN& T,	<p>Email from to DL re: Hi Denise!</p> <p>The GN Dept of Economic Development & Transportation will gladly share (via e-mail) the information with other GN departments and its community contacts in Rankin Inlet. The Department has also just forwarded the announcement to the local radio station for advertising on air.</p> <p>P.S. If I am not mistaken, the Hamlet has planned a Tuesday-evening prize ceremony for the fishing derby that is taking place this weekend. This event may affect attendance at the Auryn Resources meeting.</p> <p>Best of luck with the meeting.</p> <p>Robert</p>

May 18, 2017		R. Connelly, GN Dept. of ED & T	Email to from DL re: Thanks Robert – I brought great prizes for the meetings too – maybe that will help catch some people who didn't win prizes. Denise
May 19, 2017		R. Connelly, GN Dept of ED & T	Email from, to DL re: Hi Denise! I forwarded the meeting information to 36 of my local contacts, including the Kivalliq Inuit Association, Sakku Investments Corporation, Kivalliq Business Development Centre, Kivalliq Mine Training Society, Nunavut Development Corporation, several local businesses and many more. Let's hope there is a good turnout! Robert
May 19, 2017		R Connelly, GN Dept. of ED & T	Email to, from DL re: Many thanks Robert. I look forward to catching up with you and Veronica when I'm in town. Denise
May 23, 2017		R. Connelly, GN Dept of ED & T	Email from, to DL re: Hi Denise! I am just checking to see if tonight's meeting is still going ahead? Did you make it into Rankin Inlet? I know that several flights were cancelled in recent days – due to fog and low visibility. P.S. I am sending an email reminder to everyone as soon as you confirm that everything is still a go. Cheers, Robert
May 2, 2017		R. Connelly, GN Dept of ED & T	Email to, from DL re: I'm here! Made it in - yeah!

May 23, 2017		R. Connelly, GN Dept of ED & T	Email from, to DL re: Great! Thanks! Will send out a reminder to everyone!
May 23, 2017	7 pm	<p>Ranklin Inlet public meeting: Robert Connelly, Richard Connelly, Jeff Tulugak (KIA), Isreal Aliyak, Lydia Tatty, Jerome Tautinee, Maggie Pututik, Brian Zawadski,</p> <p>Kivalliq Mine Training Society: Arnaujuq Kowmuk, Angie Perkins</p>	<p>Denise Thanked everyone for coming and apologized that the translator did not show up as promised. Jeff translated for Jerome.</p> <p>Brian went through a power point presentation.</p> <p>Questions: Richard: will you set up a camp? Brian: no this year will be based out of Baker Lake. Results from this years exploration will determine if/where a camp could be out in. Will be exploring in a large area and this years exploration will help define a smaller area for more exploration, if successful.</p> <p>Robert: there are muskox you need to be aware of, not only caribou Brian: yes, that's good information. We will be applying a "buffer" of an additional two weeks before the prescribed start of the calving season, and an additional two weeks after the end of the prescribed caribou calving season. This is to help minimize our impact on wildlife. This is a part of our Wildlife Monitoring and Mitigation Plan.</p> <p>Q: hiring any local people this year? Brian: yes, want to maximize local hiring and businesses. Would like to know of people who have taken prospector training. Looking for expeditors, till samplers, field assistants. Will have about 10-14 people with about half being local hires. Currently in the early stages of planning for the program.</p> <p>Q: when ill you start work: Brian: respect for the caribou protection measures, and additional buffer = likely end of July to September.</p> <p>Richard: as part of your permitting, do you have to report all wildlife sightings? Brian: we don't have to, but we do have a detailed form which is part of our annual report to regulators.</p>

			After meeting ended. Two people from the Kivalliq Mine Training Society arrived. Presentation was given to them and discussion regarding training occurred.
May 24, 2017	11:26	Chesterfield Inlet Hamlet, HTO, KIA	Email to, from DL Re: Hi there. I am coming in this afternoon with aurnyn resources. Can you go on radio to remind people of tonight's meeting 7-9 at the hamlet chambers. I'm still looking for a translator. Many thanks
May 24, 2017		Chesterfield Inlet Hamlet, HTO, KIA	Email from, to DL re: Hi Denise You sent a flyer for tomorrow night I will get the announcement on now Thanks Shawn
May 24, 2017	11:31	Chesterfield Inlet Hamlet, HTO, KIA	Email to, from DL re: You are right! It is tomorrow! Sorry
May 24, 2017	12:50	Baker Lake Hamlet, KIA, HTO, MLA	Email to, from DL re: Hi reminder of tonight meeting. I still don't have a translator.
May 24, 2017	18:58	Baker Lake Hamlet, KIA, HTO, MLA	Email to, from DL re: Sorry the plane over flew baker and we couldn't get in. Will retry tomorrow. Can we have the meeting tomorrow night? Denise

May 24, 2017	20:17	Chesterfield Inlet Hamlet, HTO, KIA	<p>Email to, from DL re: Sorry but it looks as though we won't be able to make it this trip. Will let you know when we can reschedule.</p> <p>Kind regards</p> <p>Denise</p>
May 25, 2017		Chesterfield Inlet SAO	<p>Email from to DL re: Denise</p> <p>Sorry you are not coming I am headed to Ottawa, I hope</p> <p>Shawn</p>
May 25		Baker Lake Hamlet, KIA, MLA,,HTO	Email to, from DL re: sorry we couldn't make it into Baker Lake, and will let you know when we can reschedule.
May 25, 2017		Sandy Napier, Nunavut Arctic College	Meeting regarding training
May 26, 2017		Arnuajuq Kowmuk, Kivalliq Mine Training Society	Meeting regarding training, communication and the Kivalliq Trade Show
June 12, 2017	14:07	Rankin Inlet Hamlet, KIA, HTO, MLA, Baker Lake KIA, HTO, MLA, Chesterfield Inlet Hamlet, KIA, HTO, MLA	<p>Email to, from BA: Dear all,</p> <p>During the week of May 25th, Auryn Resources (North Country Gold Corp) conducted a community consultation trip to the eastern Kivilliq with respect to our Gibson MacQuoid exploration project located approximately 125 km from Baker Lake and 136 km from Rankin Inlet. We were able to present to the community of Rankin Inlet but despite several attempts, were unable to make it into Chesterfield Inlet and Baker Lake due to poor weather. We plan on coming into the communities again, likely in September of this year, but in the meantime would we like to provide you with the following summary.</p> <p>Our exploration program on the property, which will consist of till sampling, aerial drone surveys and prospecting, is expected to start in Early August. We will be based out of Baker Lake (no camp) and will be accessing the project via daily helicopter flights. The work will likely run through until the middle of September. Persons with prospecting and/or</p>

			<p>sampling experience are encouraged to send resumes to Apply <Apply@Aurynresources.com>. If you have any questions, comments or concerns please do not hesitate to contact either myself or Denise Lockett with Auryn Resources.</p> <p>Please find attached a copy of the presentation that was given in Rankin Inlet.</p> <p>Regards,</p> <p>Bryan Atkinson, B.Sc., P.Geol Exploration Manager</p>
June 13, 2017	09.12	Baker Lake Hamlet,	<p>Email to, from BA: Dear all,</p> <p>During the week of May 25th, Auryn Resources (North Country Gold Corp) conducted a community consultation trip to the eastern Kivilliq with respect to our Gibson MacQuoid exploration project located approximately 125 km from Baker Lake and 136 km from Rankin Inlet. We were able to present to the community of Rankin Inlet but despite several attempts, were unable to make it into Chesterfield Inlet and Baker Lake due to poor weather. We plan on coming into the communities again, likely in September of this year, but in the meantime would we like to provide you with the following summary.</p> <p>Our exploration program on the property, which will consist of till sampling, aerial drone surveys and prospecting, is expected to start in Early August. We will be based out of Baker Lake (no camp) and will be accessing the project via daily helicopter flights. The work will likely run through until the middle of September. Persons with prospecting and/or sampling experience are encouraged to send resumes to Apply <Apply@Aurynresources.com>. If you have any questions, comments or concerns please do not hesitate to contact either myself or Denise Lockett with Auryn Resources.</p> <p>Please find attached a copy of the presentation that was given in Rankin Inlet.</p>

			<p>Regards,</p> <p>Bryan Atkinson, B.Sc., P.Geol Exploration Manager</p>
June 18, 2017	07:42	Rankin Inlet Hamlet, KIA, HTO, MLA Chesterfield Hamlet KIA, HTO, MLA Baker Lake Hamlet, KIA HTO, MLA	<p>Email to, from DL re: See below a recent news release from Auryn Resources.</p> <p>Kind regards</p> <p>Denise Lockett, for Auryn Resources</p>
Aug 9, 2017	4:02	Gabe Karlik, KIA Executive Director	<p>Email to, from DL re: Hello Gabe:</p> <p>I hope the tour is going well for you and you are getting a lot of good suggestions from people. As mentioned before, Auryn Resources is planning on conducting community consultations in Rankin Inlet, Chesterfield Inlet and Baker Lake for their Gibson McQuoid Project the week of September 19. Either Peter Rees (Chief Financial Officer) or Michael Henrichsen (Chief Operating Officer) would like an opportunity, if possible to meet with the KIA Executive, or a Board Meeting to discuss their project.</p> <p>Can you please let me know if this is a possibility. Thanks again and travel safe.</p> <p>Denise A Lockett</p>
Aug 9, 2017	3:04	Gabe Karlik, KIA Executive Director	<p>Email from, to DL re: Good afternoon Denise</p> <p>KIA plans to have its next board meeting at Meadowbank on September 11 until the 15. The following week we are at the nirb hearings. Best time would be on October 2-6 as that KIA's AGM date if you like I could get you a time to bring your issues than.</p>
Aug 9, 2017	3:11	Gabe Karlik, KIA Executive Director	<p>Email to, from Bryan Atkinson re: Gabriel, We don't have any issues to bring forward. The intent of the meeting is to get a face to face introduction of Auryn Resources to the KIA. Could</p>

			<p>we meet for a quick informal coffee either on the 19th or the 22nd of September in Rankin Inlet? We wouldn't take more than a half hour of your time.</p> <p>Regards,</p> <p>Bryan Atkinson, B.Sc., P.Geol Exploration Manager</p>

Appendix 2

2017 Wildlife Observation Logs

Incidental Wildlife Sighting / Sign Form
(please fill in as much information as possible)



NORTH COUNTRY GOLD
NCG: TSX-V

(space is provided on the reverse for an illustration of the wildlife's location and activity along with additional space for notes and/or a description of the wildlife "sign" observed)

1. What was sighted?

a. Species sighted: Arctic fox
(see Common Species List on reverse)

b. How many in each group?:

Age	Sex
<input type="checkbox"/> Adult	<input type="checkbox"/> Male
<input checked="" type="checkbox"/> Sub-Adult	<input type="checkbox"/> Female
<input type="checkbox"/> Yearling / newborn	<input checked="" type="checkbox"/> Unknown
<input type="checkbox"/> Unknown	

2. When was the sighting?

a. Date (MM/DD/YY): _____

b. Time (exact or approximate): _____

<input type="checkbox"/>	<input type="checkbox"/>	<input type="checkbox"/>	<input type="checkbox"/>
Day	Night	Dusk	Dawn

c. Description (e.g. any notes on species, size, color, antlers, etc.):

Small, gray

d. Behaviour - Please provide a description of the animals' behaviour. What was it / were they doing? How long? etc.

Yipping and hiding behind a rock

e. Was the individual / group sighted over a period of time? ☐ Yes ☒ No If so, for how long? _____

f. Was any action taken? ☐ Yes ☒ No If so, what? _____

3. Where was the sighting?

a. GPS Coordinates: 63.587322 -93.667607

b. Datum: UTM

c. Was sighting within camp? ☐ Yes ☒ No

d. If not, how far from camp boundary? ~8 miles

e. Please describe the location (e.g. "on hill next to cook's tent"), as well as the direction the wildlife was traveling:

Stationary, rocky area

4. Weather Conditions:

<u>No snow</u>		<u>No rain</u>	
Snowfall	<input type="checkbox"/> Light <input type="checkbox"/> Moderate <input type="checkbox"/> Heavy	Rainfall	<input type="checkbox"/> Light <input type="checkbox"/> Moderate <input type="checkbox"/> Heavy
Wind	<input type="checkbox"/> Breeze <input checked="" type="checkbox"/> Moderate <input type="checkbox"/> Strong	Sky	<input type="checkbox"/> Clear Sky <input type="checkbox"/> Partly Cloudy <input checked="" type="checkbox"/> Overcast

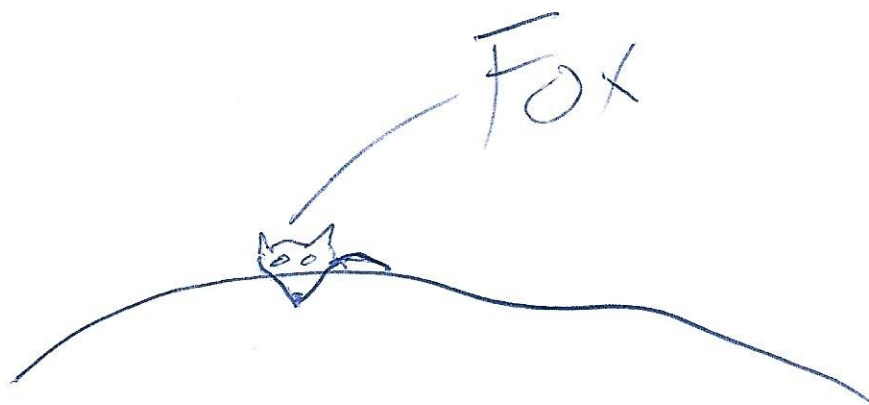
Recent Conditions: _____

f. Was a photo taken? ☐ Yes ☒ No

Photo (file) name/number: _____

Observed by: Daniel Baker

Illustration:



(please indicate scale and north direction)

Common Species:

Ptarmigan
Snowy Owl
Falcon/Eagle
Goose
Duck
Loon

Arctic Hare
Sik Sik (Arctic Ground Squirrel)
Lemming

Caribou
Musk Ox

Fox
Wolverine
Arctic Wolf
Bear
(Polar or Barren-lands Grizzly)

Additional Information / Description of Wildlife "Sign": _____

Incidental Wildlife Sighting / Sign Form

(please fill in as much information as possible)



NORTH COUNTRY GOLD
NCG: TSX-V

(space is provided on the reverse for an illustration of the wildlife's location and activity along with additional space for notes and/or a description of the wildlife "sign" observed)

1. What was sighted?

a. Species sighted: Arctic Fox
(see Common Species List on reverse)

b. How many in each group?:

Age	Sex
<input type="checkbox"/> Adult	<input type="checkbox"/> Male
<input checked="" type="checkbox"/> Sub-Adult	<input type="checkbox"/> Female
<input type="checkbox"/> Yearling / newborn	<input checked="" type="checkbox"/> Unknown
<input type="checkbox"/> Unknown	

2. When was the sighting?

a. Date (MM/DD/YY): 08/18/2017

b. Time (exact or approximate): 14:30

<input type="checkbox"/>	<input type="checkbox"/>	<input type="checkbox"/>	<input type="checkbox"/>
Day	Night	Dusk	Dawn

c. Description (e.g. any notes on species, size, color, antlers, etc.): 20 lbs Mottled light + dark grey

d. Behaviour - Please provide a description of the animals' behaviour. What was it / were they doing? How long? etc.

Playful and curious, approached really close and took multiple attempts to shoo off

e. Was the individual / group sighted over a period of time? ☐ Yes ☒ No If so, for how long? _____

f. Was any action taken? ☒ Yes ☐ No If so, what? Shooed off by snapping fingers and shouting

3. Where was the sighting?

a. GPS Coordinates: _____ b. Datum: _____

c. Was sighting within camp? ☐ Yes ☒ No d. If not, how far from camp boundary? 70 miles

e. Please describe the location (e.g. "on hill next to cook's tent"), as well as the direction the wildlife was traveling:

On drinking next to lake

4. Weather Conditions:

Snowfall	<input type="checkbox"/> Light <input type="checkbox"/> Moderate <input type="checkbox"/> Heavy	Rainfall	<input checked="" type="checkbox"/> Light <input type="checkbox"/> Moderate <input type="checkbox"/> Heavy
Wind	<input type="checkbox"/> Breeze <input type="checkbox"/> Moderate <input type="checkbox"/> Strong	Sky	<input type="checkbox"/> Clear Sky <input type="checkbox"/> Partly Cloudy <input type="checkbox"/> Overcast

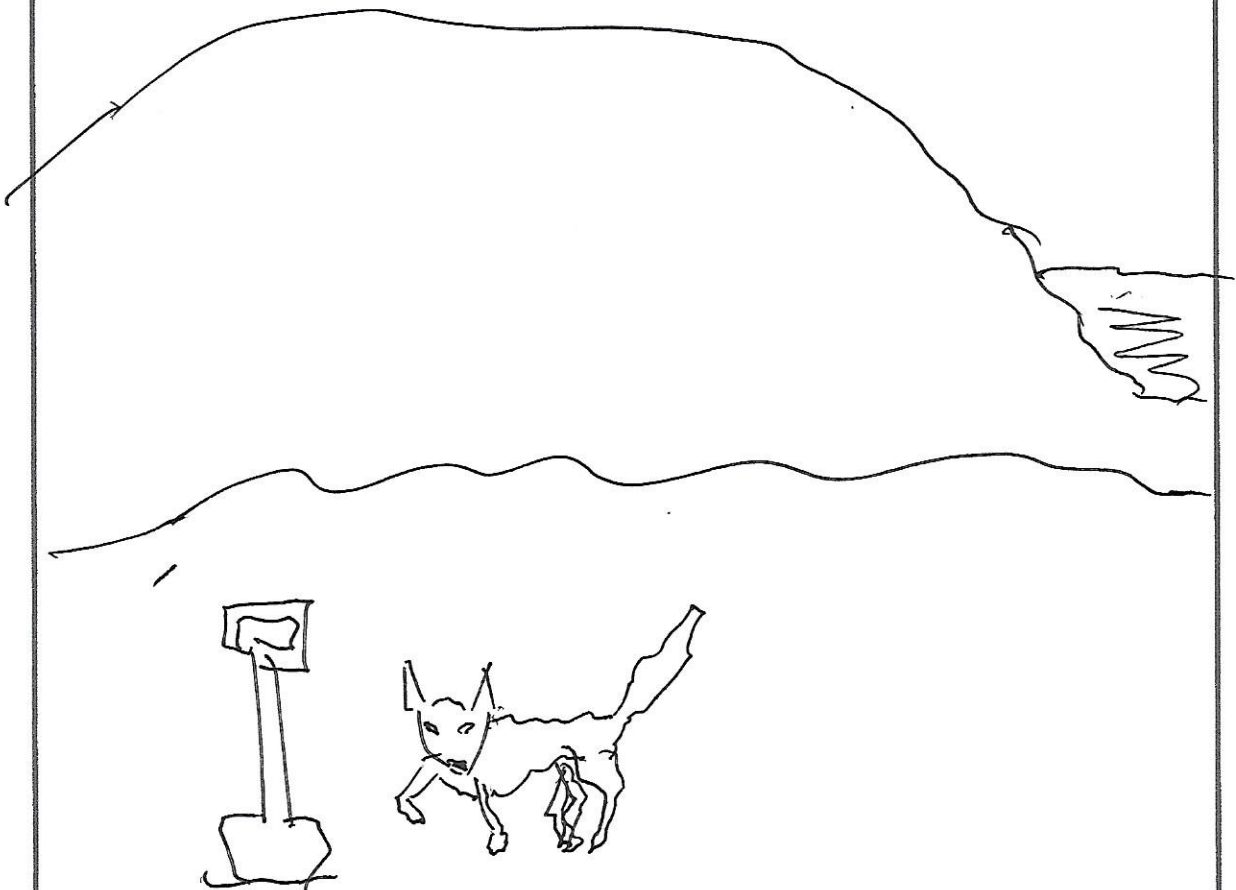
Recent Conditions: _____

f. Was a photo taken? ☐ Yes ☒ No

Photo (file) name/number: _____

Observed by: Ken Hamilton

Illustration:



(please indicate scale and north direction)

Common Species:

Ptarmigan
Snowy Owl
Falcon/Eagle
Goose
Duck
Loon

Arctic Hare
Sik Sik (Arctic Ground Squirrel)
Lemming

Caribou
Musk Ox

Fox
Wolverine
Arctic Wolf
Bear
(Polar or Barren-lands Grizzly)

Additional Information / Description of Wildlife "Sign": _____

Incidental Wildlife Sighting / Sign Form

(please fill in as much information as possible)



NORTH COUNTRY GOLD
NCG: TSX-V

(space is provided on the reverse for an illustration of the wildlife's location and activity along with additional space for notes and/or a description of the wildlife "sign" observed)

1. What was sighted?

a. Species sighted: wolf
(see Common Species List on reverse)

b. How many in each group?:

Age	Sex
<input checked="" type="checkbox"/> Adult	<input type="checkbox"/> Male
<input type="checkbox"/> Sub-Adult	<input type="checkbox"/> Female
<input type="checkbox"/> Yearling / newborn	<input checked="" type="checkbox"/> Unknown
<input type="checkbox"/> Unknown	

2. When was the sighting?

a. Date (MM/DD/YY): Aug 21 2017
b. Time (exact or approximate): 10:30am

<input checked="" type="checkbox"/>	<input type="checkbox"/>	<input type="checkbox"/>	<input type="checkbox"/>
Day	Night	Dusk	Dawn

c. Description (e.g. any notes on species, size, color, antlers, etc.): white, large

d. Behaviour - Please provide a description of the animals' behaviour. What was it / were they doing? How long? etc.

Curious. Walked toward me then circled till it was down wind of me, then walked away.

e. Was the individual / group sighted over a period of time? ☐ Yes ☒ No If so, for how long? _____

f. Was any action taken? ☐ Yes ☒ No If so, what? _____

3. Where was the sighting?

a. GPS Coordinates: _____ b. Datum: UTM

c. Was sighting within camp? ☐ Yes ☒ No d. If not, how far from camp boundary? _____

e. Please describe the location (e.g. "on hill next to cook's tent"), as well as the direction the wildlife was traveling:

Brushy field

4. Weather Conditions:

Snowfall	<input type="checkbox"/> Light <input type="checkbox"/> Moderate <input type="checkbox"/> Heavy	Rainfall	<input type="checkbox"/> Light <input type="checkbox"/> Moderate <input type="checkbox"/> Heavy
Wind	<input type="checkbox"/> Breeze <input checked="" type="checkbox"/> Moderate <input type="checkbox"/> Strong	Sky	<input checked="" type="checkbox"/> Clear Sky <input type="checkbox"/> Partly Cloudy <input type="checkbox"/> Overcast

Recent Conditions: _____

f. Was a photo taken? ☐ Yes ☒ No
Photo (file) name/number: _____

Observed by: Daniel Baker

Illustration:



(please indicate scale and north direction)

Common Species:

Ptarmigan
Snowy Owl
Falcon/Eagle
Goose
Duck
Loon

Arctic Hare
Sik Sik (Arctic Ground Squirrel)
Lemming

Caribou
Musk Ox

Fox
Wolverine
Arctic Wolf
Bear
(Polar or Barren-lands Grizzly)

Additional Information / Description of Wildlife "Sign":

Incidental Wildlife Sighting / Sign Form

(please fill in as much information as possible)



NORTH COUNTRY GOLD
NCG: TSX-V

(space is provided on the reverse for an illustration of the wildlife's location and activity along with additional space for notes and/or a description of the wildlife "sign" observed)

1. What was sighted?

a. Species sighted: Wolverine
(see Common Species List on reverse)

b. How many in each group?:

Age	Sex
<input checked="" type="checkbox"/> Adult	<input type="checkbox"/> Male
<input checked="" type="checkbox"/> Sub-Adult	<input type="checkbox"/> Female
<input type="checkbox"/> Yearling / newborn	<input checked="" type="checkbox"/> Unknown
<input type="checkbox"/> Unknown	

2. When was the sighting?

a. Date (MM/DD/YY): 02/21/17

b. Time (exact or approximate): 10:30

<input checked="" type="checkbox"/>	<input type="checkbox"/>	<input type="checkbox"/>	<input type="checkbox"/>
Day	Night	Dusk	Dawn

c. Description (e.g. any notes on species, size, color, antlers, etc.): 2 Larger, 3 slightly smaller

d. Behaviour - Please provide a description of the animals' behaviour. What was it / were they doing? How long? etc.

They stood on hind legs, started to run, while bounding

e. Was the individual / group sighted over a period of time? ☐ Yes ☒ No If so, for how long? _____

f. Was any action taken? ☐ Yes ☒ No If so, what? let people know on radio

3. Where was the sighting?

a. GPS Coordinates: _____ b. Datum: _____

c. Was sighting within camp? ☐ Yes ☒ No d. If not, how far from camp boundary? _____

e. Please describe the location (e. "on hill next to cook's tent"), as well as the direction the wildlife was traveling:

S

4. Weather Conditions:

Snowfall	<input type="checkbox"/> Light <input type="checkbox"/> Moderate <input type="checkbox"/> Heavy	Rainfall	<input type="checkbox"/> Light <input type="checkbox"/> Moderate <input type="checkbox"/> Heavy
Wind	<input type="checkbox"/> Breeze <input type="checkbox"/> Moderate <input type="checkbox"/> Strong	Sky	<input checked="" type="checkbox"/> Clear Sky <input type="checkbox"/> Partly Cloudy <input type="checkbox"/> Overcast

Recent Conditions: _____

f. Was a photo taken? ☐ Yes ☒ No

Photo (file) name/number: _____

Observed by: Derek Wongus

Illustration:

(please indicate scale and north direction)

Common Species:

Ptarmigan
Snowy Owl
Falcon/Eagle
Goose
Duck
Loon

Arctic Hare
Sik Sik (Arctic Ground Squirrel)
Lemming

Caribou
Musk Ox

Fox
Wolverine
Arctic Wolf
Bear
(Polar or Barren-lands Grizzly)

Additional Information / Description of Wildlife "Sign": _____

Incidental Wildlife Sighting / Sign Form

(please fill in as much information as possible)



NORTHCOUNTRYGOLD
NCG: TSX-V

(space is provided on the reverse for an illustration of the wildlife's location and activity along with additional space for notes and/or a description of the wildlife "sign" observed)

1. What was sighted?

a. Species sighted: Grizzly Bear
(see Common Species List on reverse)

b. How many in each group?:

Age		Sex	
<input type="checkbox"/>	Adult	<input type="checkbox"/>	Male
<input type="checkbox"/>	Sub-Adult	<input type="checkbox"/>	Female
<input type="checkbox"/>	Yearling / newborn	<input checked="" type="checkbox"/>	Unknown
<input checked="" type="checkbox"/>	Unknown		

2. When was the sighting?

a. Date (MM/DD/YY): 08/11/2017

b. Time (exact or approximate): 2:45

<input checked="" type="checkbox"/>	<input type="checkbox"/>	<input type="checkbox"/>	<input type="checkbox"/>
Day	Night	Dusk	Dawn

c. Description (e.g. any notes on species, size, color, antlers, etc.): Grizzly bear

d. Behaviour - Please provide a description of the animals' behaviour. What was it / were they doing? How long? etc.

e. Was the individual / group sighted over a period of time? ☒ Yes ☐ No If so, for how long? 30-45 minutes

f. Was any action taken? ☒ Yes ☐ No If so, what? bear bangers (6)

3. Where was the sighting?

a. GPS Coordinates: _____ b. Datum: _____

c. Was sighting within camp? ☐ Yes ☒ No d. If not, how far from camp boundary? 21 hour

e. Please describe the location (e.g. "on hill next to cook's tent"), as well as the direction the wildlife was traveling:

in Valley next to hill

4. Weather Conditions:

Snowfall	<input type="checkbox"/> Light <input type="checkbox"/> Moderate <input type="checkbox"/> Heavy	Rainfall	<input checked="" type="checkbox"/> Light <input type="checkbox"/> Moderate <input type="checkbox"/> Heavy
Wind	<input type="checkbox"/> Breeze <input checked="" type="checkbox"/> Moderate <input type="checkbox"/> Strong	Sky	<input type="checkbox"/> Clear Sky <input checked="" type="checkbox"/> Partly Cloudy <input type="checkbox"/> Overcast

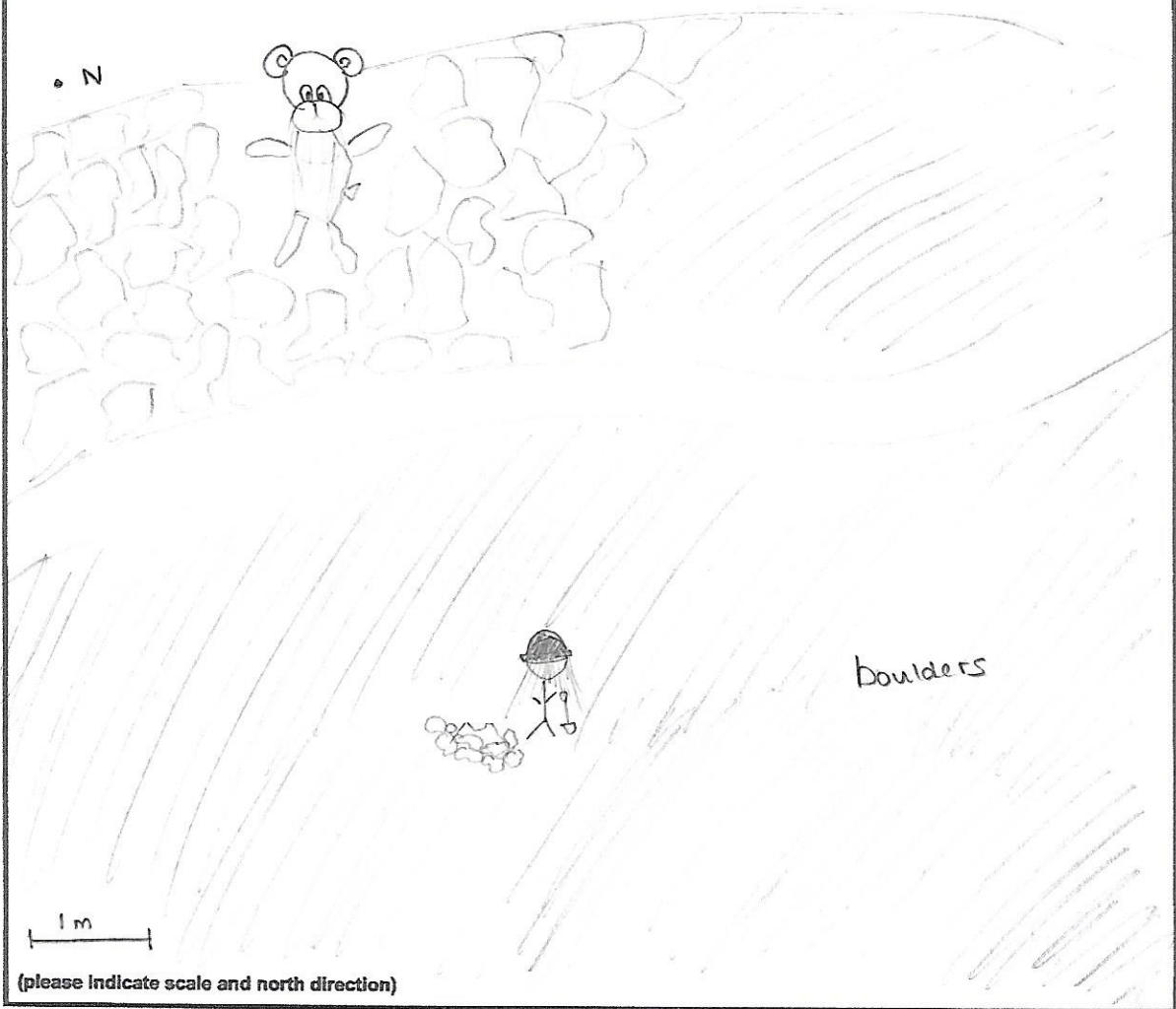
Recent Conditions: _____

f. Was a photo taken? ☐ Yes ☒ No

Photo (file) name/number: _____

Observed by: Kelsey Bulbuc

Illustration:



Common Species:

Ptarmigan
Snowy Owl
Falcon/Eagle
Goose
Duck
Loon

Arctic Hare
Sik Sik (Arctic Ground Squirrel)
Lemming

Caribou
Musk Ox

Fox
Wolverine
Arctic Wolf
Bear
(Polar or Barren-lands Grizzly)

Additional Information / Description of Wildlife "Sign":

Incidental Wildlife Sighting / Sign Form

(please fill in as much information as possible)



NORTH COUNTRY GOLD
NCG: TSX-V

(space is provided on the reverse for an illustration of the wildlife's location and activity along with additional space for notes and/or a description of the wildlife "sign" observed)

1. What was sighted?

a. Species sighted: Caribou & Muskox
(see Common Species List on reverse)

b. How many in each group?:

Age
☒ Adult
☒ Sub-Adult
☐ Yearling / newborn
☐ Unknown

Sex
☒ Male
☐ Female
☐ Unknown

2. When was the sighting?

a. Date (MM/DD/YY): _____

b. Time (exact or approximate): _____

☐

Day

☐

Night

☐

Dusk

☐

Dawn

c. Description (e.g. any notes on species, size, color, antlers, etc.):

Caribou - a young adult, fair pale colour, 4-5 ft. with young antlers.
Muskox head that was spotted 200 mts away on a ridge

d. Behaviour - Please provide a description of the animals' behaviour. What was it / were they doing? How long? etc.

Came over checked out and ran away

e. Was the individual / group sighted over a period of time? ☐ Yes ☒ No If so, for how long? _____

f. Was any action taken? ☐ Yes ☒ No If so, what? _____

3. Where was the sighting?

a. GPS Coordinates: _____ b. Datum: _____

c. Was sighting within camp? ☐ Yes ☒ No d. If not, how far from camp boundary? _____

e. Please describe the location (e.g. "on hill next to cook's tent"), as well as the direction the wildlife was traveling:

Caribou - heading east by a lake

Muskox head - heading north on a ridge

4. Weather Conditions:

Snowfall


☐

Light

☐

Moderate

☐

Heavy

Rainfall


☐

Light

☐

Moderate

☐

Heavy

Wind

☒

Breeze

☐

Moderate

☐

Strong

Sky

☒

Clear Sky

☐

Partly Cloudy

☐

Overcast

Recent Conditions: _____

f. Was a photo taken? ☐ Yes ☒ No

Photo (file) name/number: _____

Observed by: Abhishek Wadwani

Illustration:

(please indicate scale and north direction)

Common Species:

Ptarmigan
Snowy Owl
Falcon/Eagle
Goose
Duck
Loon

Arctic Hare
Sik Sik (Arctic Ground Squirrel)
Lemming

Caribou
Musk Ox

Fox
Wolverine
Arctic Wolf
Bear
(Polar or Barren-lands Grizzly)

Additional Information / Description of Wildlife "Sign":

Incidental Wildlife Sighting / Sign Form
(please fill in as much information as possible)



NORTH COUNTRY GOLD
NCG: TSX-V

(space is provided on the reverse for an illustration of the wildlife's location and activity along with additional space for notes and/or a description of the wildlife "sign" observed)

1. What was sighted?

a. Species sighted: Muskox
(see Common Species List on reverse)

b. How many in each group?:

Age		Sex	
<input checked="" type="checkbox"/> Adult		<input checked="" type="checkbox"/> Male	
<input checked="" type="checkbox"/> Sub-Adult		<input checked="" type="checkbox"/> Female	
<input checked="" type="checkbox"/> Yearling / newborn		<input type="checkbox"/> Unknown	
<input type="checkbox"/> Unknown			

2. When was the sighting?

a. Date (MM/DD/YY): 08/30/17

b. Time (exact or approximate): 12:00

<input checked="" type="checkbox"/> Day	<input type="checkbox"/> Night	<input type="checkbox"/> Dusk	<input type="checkbox"/> Dawn
---	--------------------------------	-------------------------------	-------------------------------

c. Description (e.g. any notes on species, size, color, antlers, etc.): Herd (~24) of muskoxen

d. Behaviour - Please provide a description of the animals' behaviour. What was it / were they doing? How long? etc.

Grazing, keeping a safe distance between me and them

e. Was the individual / group sighted over a period of time? ☒ Yes ☐ No If so, for how long? 2 hrs

f. Was any action taken? ☒ Yes ☐ No If so, what? Stayed at safe distance

3. Where was the sighting?

a. GPS Coordinates: GMB till sampling grid 2-pt. 5832

b. Datum: _____

c. Was sighting within camp? ☐ Yes ☒ No

d. If not, how far from camp boundary? 110 km

e. Please describe the location (e.g. "on hill next to cook's tent"), as well as the direction the wildlife was traveling:

On hill next to lake, moving north

4. Weather Conditions:

Snowfall	<input type="checkbox"/> Light <input type="checkbox"/> Moderate <input type="checkbox"/> Heavy	Rainfall	<input type="checkbox"/> Light <input type="checkbox"/> Moderate <input type="checkbox"/> Heavy
Wind	<input type="checkbox"/> Breeze <input type="checkbox"/> Moderate <input type="checkbox"/> Strong	Sky	<input checked="" type="checkbox"/> Clear Sky <input type="checkbox"/> Partly Cloudy <input type="checkbox"/> Overcast

Recent Conditions: Clear sky

f. Was a photo taken? ☐ Yes ☒ No

Photo (file) name/number: _____

Observed by: Ken Hamilton

Illustration:

A hand-drawn map showing a route. The route starts at a point labeled 'Myself' (circled) at the bottom right, goes left and then up to a point labeled 'Herd' (circled) at the bottom left. From 'Herd', the route goes up, then right, then up again, ending at a point marked with an 'X'. A path also branches off from the 'Herd' area, goes up and then right, ending at a point labeled 'Cheke' (circled). A large irregular shape in the center is labeled 'Outcrop'. A wavy line on the left is labeled 'Lake'. A scale bar at the bottom right indicates 500m. The text '(please indicate scale and north direction)' is written at the bottom left.

Ptarmigan
Snowy Owl
Falcon/Eagle
Goose
Duck
Loon

Arctic Hare
Sik Sik (Arctic Ground Squirrel)
Lemming

**Caribou
Musk Ox**

**Fox
Wolverine
Arctic Wolf
Bear
(Polar or Barren-lands Grizzly)**

Additional Information / Description of Wildlife "Sign":