

Eqe Bay Exploration Drilling Program

Non-Technical Summary

Baffinland Iron Mines Corporation (Baffinland) is planning to continue the mineral exploration program at Eqe Bay originally approved in 2018. At that time Baffinland secured a positive Conformity Determination from the Nunavut Planning Commission (NPC), a positive Screening Decision Report from the Nunavut Impact Review Board (NIRB) and a Type B Water License from the Nunavut Water Board (NWB). To continue the exploration program in 2026 and beyond, Baffinland must renew the Type B Water License, which otherwise expires on April 3, 2026. This application to the NPC is strictly a requirement of NWB to initiate their renewal process. Baffinland is not proposing any changes to the scope of activities previously reviewed and approved by the NPC, NIRB and NWB in relation to the Eqe Bay Exploration Program. Details of the program as planned for 2026 and beyond are provided here for reference and consistent with those provided in 2018.

Background

Eqe Bay is located on the west coast of Baffin Island, approximately 90 km south of Steensby Port, and 190 km east of both Igloolik and Hall Beach. The location is shown on Figure 1. The exploration area is located on Inuit Owned Land (IOL) Parcel IG-03, of which Inuit hold both surface rights and subsurface mineral rights. Baffinland holds a current exploration agreement with Nunavut Tunngavik Inc. (NTI) to explore the mineral potential in this area, and also holds federal mineral claims covering adjacent Crown Lands and part of IG-02.

The Eqe Bay Exploration Program Project Proposal commenced with surface sampling and an archeological survey of the area in 2018. Activities in 2019 included geological and structural mapping, grab sampling and ground geophysical surveys. In 2021, a geophysics survey, till sampling, geologic mapping, permafrost, and archaeological survey were completed. Continued desktop evaluations of geologic and geophysical data were conducted between 2022 and 2024. A camp was purchased for mobilization to site in 2021 pending issuance of a QIA Land Use Lease on IG03. Prospecting traverses were carried out on the Project in 2025.

Baffinland conducted archaeological surveys of the proposed exploration area, including camp locations, in the summers of 2018 and 2021.

2026 Exploration Program

A reverse-circulation (RC) drill program is currently planned for the summer of 2026. This program will use one heli-portable RC drill to test previously identified drill targets. The total number of holes and meters to be drilled will depend on drill productivity, weather conditions and drilling results. RC drills do not require water or create waste. Other exploration activities to be undertaken in 2026 includes detailed geological mapping, ground geophysics (completion of a survey started in 2021), and prospecting. The 2026 program will be supported from Mary River. Only a temporary emergency survival tent will be erected on-site and removed at the conclusion of field activities. Helicopters will be used to move the drill and to transport workers between Mary River and Eqe Bay. Diesel and Jet fuel will be stored in drums within lined secondary containment areas.

Full Scope Exploration Program

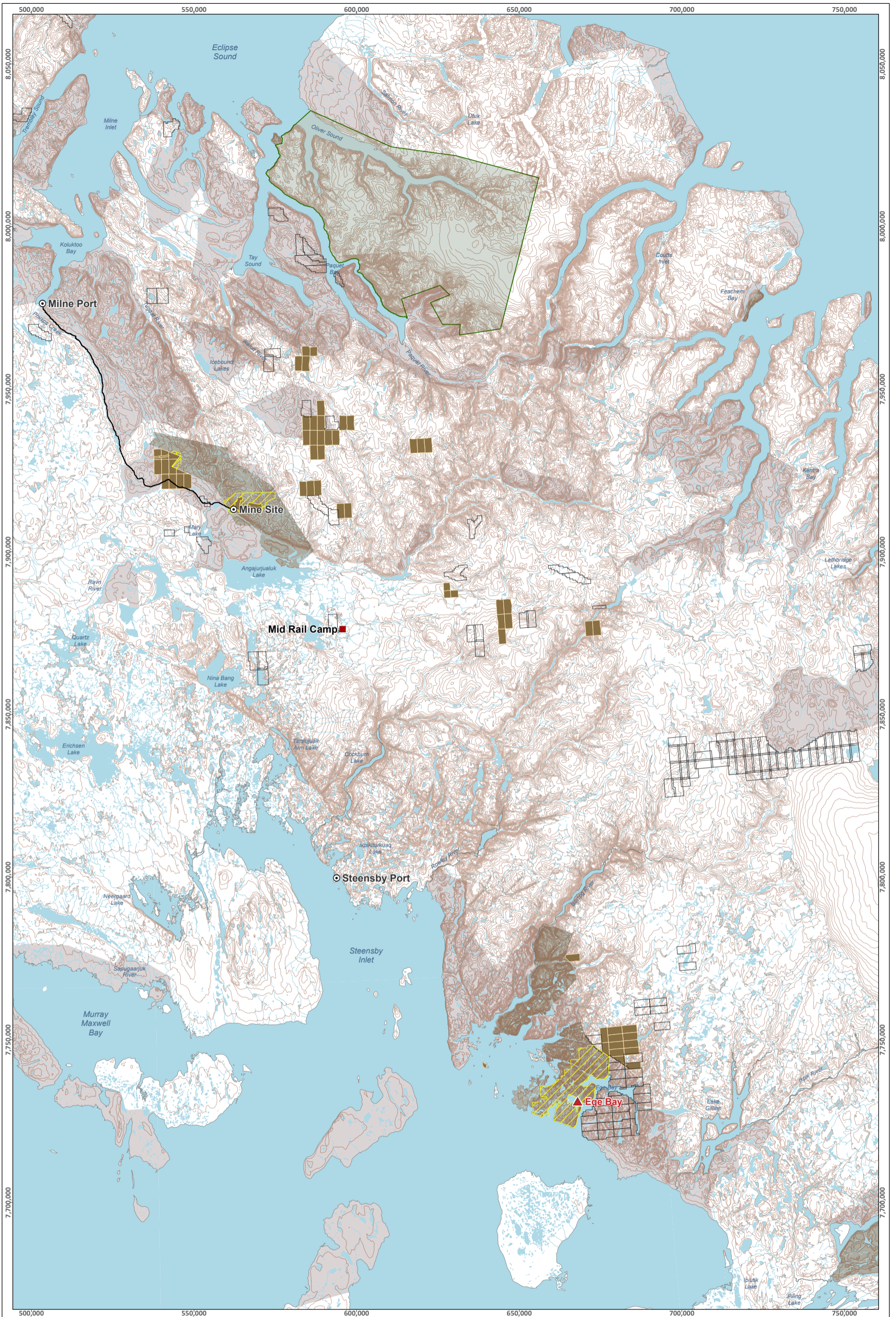
As previously described in the 2018 Project Description, Baffinland plans to increase the scale of its exploration program at Ege Bay over time. This expanded scope exploration program could include the following:

- Operation of up to 8 drills (RC or diamond)
- Construction of a camp suitable to host 100-persons
- Use of a Twin Otter on tundra tires for personnel transport
- Implement bulk fuel storage using double-walled tanks
- Source construction materials from one or two quarries
- Construct access trails to connect the camp to exploration areas to reduce helicopter use
- Construct a small airstrip to improve air access to the site

At the conclusion of the exploration program, a closure and reclamation plan will be followed to remove all equipment and materials from the site and restore the area to the extent practical.

Existing and Anticipated Approvals

The NPC (File No. 148801) and NIRB (SD 18EN026) have both previously assessed and approved the Ege Bay Project. A Type B Water License (2BE-EQE1926) was issued by the Nunavut Water Board and renewal is being pursued. A Land Use Licence III is currently being sought from the QIA for surface access to IG-02 and IG-03.



SAVED: C:\Users\Krislana.Patras\Documents\AccGIS\Projects\Reporting\Annual Reports\Type A\2025\Fig 2_Protect Activities_2025.aprx; 13-Mar-26

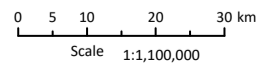
LEGEND

- | | | |
|--------------------------------------|----------------------------|-----------------------------------|
| Exploration Program Location | Sirmilik National Park | Mineral Claims Held by Baffinland |
| Mary River Project Facility Location | IOL Surface Only | NTI Exploration Area |
| Mid Rail Camp Location | IOL Surface and Subsurface | Mining Lease Boundary |
| Milne Inlet Tote Road | Crown Land | |
| Contour (20 m Interval) | | |

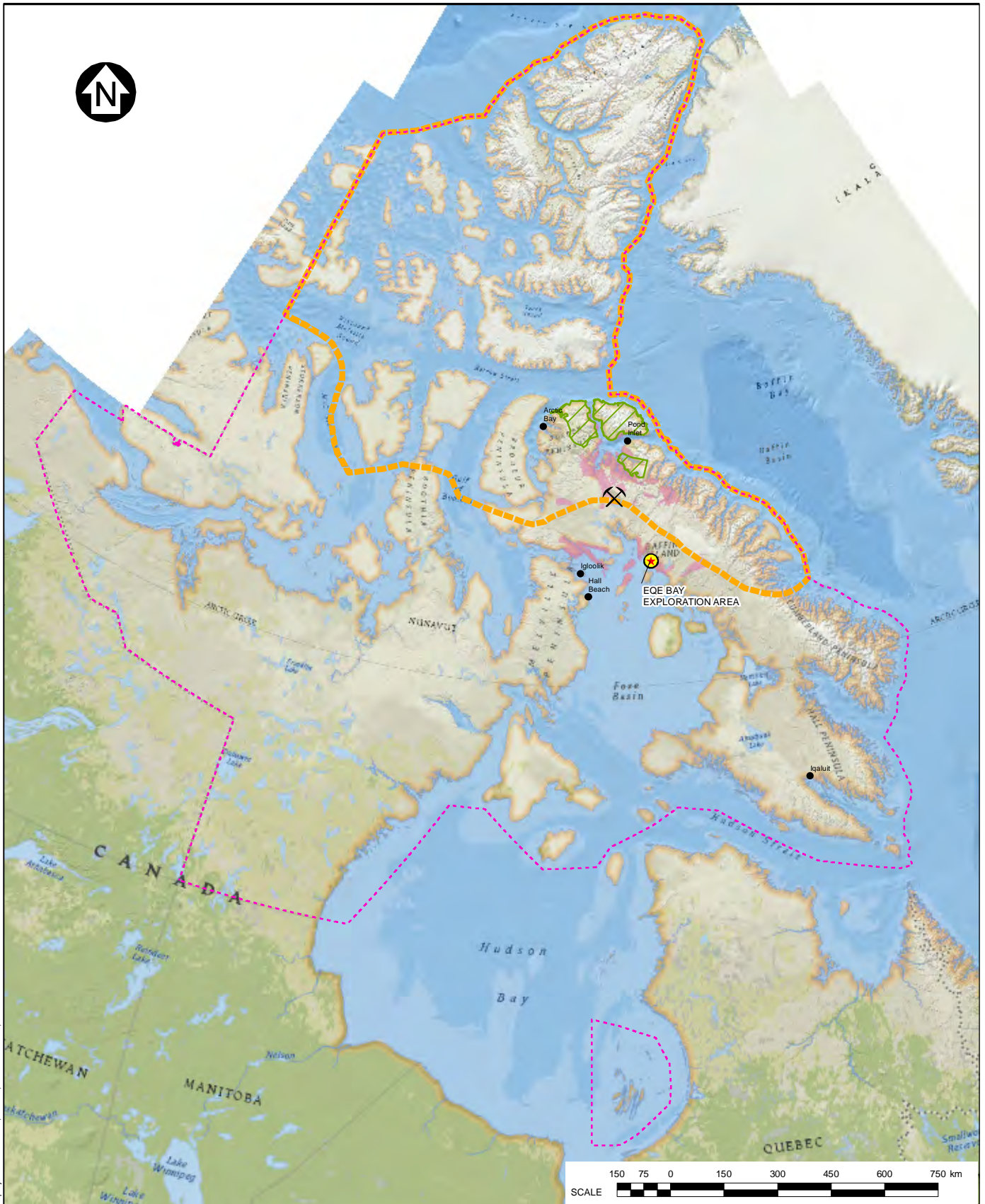
ᐃᑦᑦ ᐅᑦᑦᑦᑦᑦᑦᑦᑦ ᑦᑦᑦᑦᑦᑦᑦᑦ EQE BAY EXPLORATION

Ege Bay Activities Overview

Projection: NAD 1983 UTM ZONE 17N.
Base Map: © King's Printer for Ontario, 2026.



ᐃᑦᑦᑦᑦᑦᑦᑦᑦᑦᑦ
FIGURE



LEGEND:

- COMMUNITY
- ⚡ MARY RIVER PROJECT
- ★ EOE BAY EXPLORATION AREA
- NUNAVUT SETTLEMENT AREA
- NORTH BAFFIN PLANNING REGION
- SIRMILIK NATIONAL PARK
- IOL SURFACE AND SUBSURFACE INCLUDING MINERALS
- IOL SURFACE ONLY EXCLUDING MINERALS

NOTES:

1. BASE MAP: © ESRI DATA AND MAPS (ONLINE) (2016). REDLANDS, CA: ENVIRONMENTAL SYSTEMS RESEARCH INSTITUTE. ALL RIGHTS RESERVED.
2. NORTH BAFFIN PLANNING BOUNDARY FROM NUNAVUT PLANNING COMMISSION (2017).
3. NTI-BIM EXPLORATION AGREEMENT SUBAREAS FROM BAFFINLAND (08 MARCH, 2018).



EQE BAY EXPLORATION PROGRAM

PROJECT LOCATION MAP



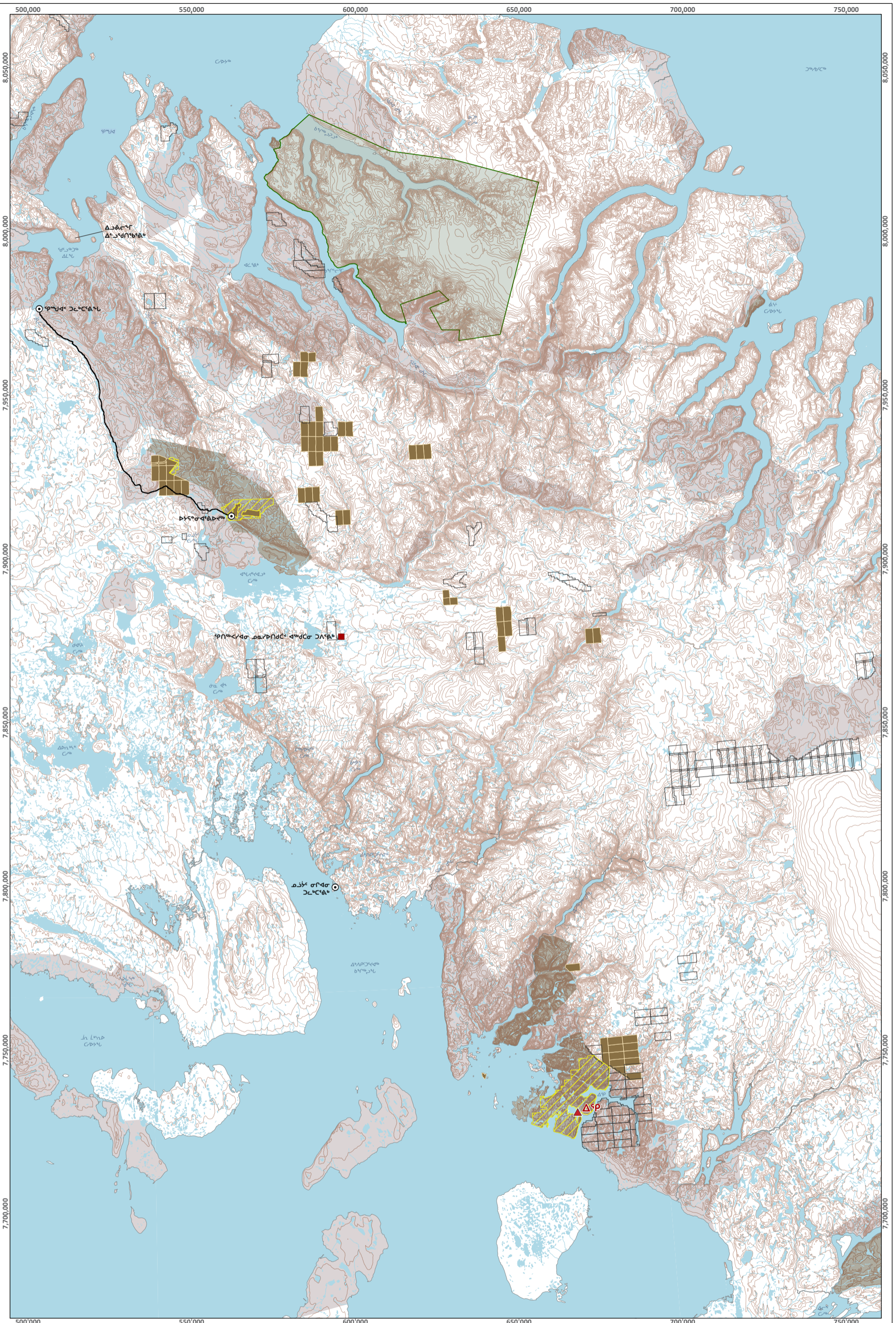
PIA NO. NB102-181/46 REF NO. NB18-00161

FIGURE 1

REV 0

SAVED: \\110200181\46\AGIS\Fig0A01_0 - Fig 1 - project location.mxd; Mar 16, 2018 12:10 PM; rfalima

REV	DATE	DESCRIPTION	AV DESIGNED	RF DRAWN	RAC REVIEWED
0	16MAR'18	ISSUED WITH TRANSMITTAL			



SAVED: C:\Users\Krislana.Patras\Documents\AccGIS\Projects\Reporting\Annual Reports\Type A\2025\Fig 2_Protect Activities_2025\Fig 2_Protect Activities_2025.aprx, 13-Mar-26

ᓄᓇᓂᓄᓐ ᐅᓂᓂᓂᓄᓐ

ᐅᓂᓂᓂᓄᓐ ᐅᓂᓂᓂᓄᓐ ᐅᓂᓂᓂᓄᓐ ᐅᓂᓂᓂᓄᓐ	ᓴᓴᓴᓴ ᓴᓴᓴᓴᓴᓴ	ᐅᓂᓂᓂᓄᓐ ᐅᓂᓂᓂᓄᓐ ᐅᓂᓂᓂᓄᓐ
ᐅᓂᓂᓂᓄᓐ ᐅᓂᓂᓂᓄᓐ ᐅᓂᓂᓂᓄᓐ	ᐅᓂᓂᓂᓄᓐ ᐅᓂᓂᓂᓄᓐ ᐅᓂᓂᓂᓄᓐ	ᐅᓂᓂᓂᓄᓐ ᐅᓂᓂᓂᓄᓐ
ᐅᓂᓂᓂᓄᓐ ᐅᓂᓂᓂᓄᓐ ᐅᓂᓂᓂᓄᓐ	ᐅᓂᓂᓂᓄᓐ ᐅᓂᓂᓂᓄᓐ ᐅᓂᓂᓂᓄᓐ	
ᐅᓂᓂᓂᓄᓐ ᐅᓂᓂᓂᓄᓐ ᐅᓂᓂᓂᓄᓐ	ᐅᓂᓂᓂᓄᓐ ᐅᓂᓂᓂᓄᓐ ᐅᓂᓂᓂᓄᓐ	
ᐅᓂᓂᓂᓄᓐ ᐅᓂᓂᓂᓄᓐ ᐅᓂᓂᓂᓄᓐ	ᐅᓂᓂᓂᓄᓐ ᐅᓂᓂᓂᓄᓐ ᐅᓂᓂᓂᓄᓐ	

ᐅᓂᓂᓂᓄᓐ ᐅᓂᓂᓂᓄᓐ ᐅᓂᓂᓂᓄᓐ EQE BAY EXPLORATION

ᐅᓂᓂᓂᓄᓐ ᐅᓂᓂᓂᓄᓐ ᐅᓂᓂᓂᓄᓐ

Projection: NAD 1983 UTM ZONE 17N.
Base Map: © King's Printer for Ontario, 2026.

0 5 10 20 30 km
ᐅᓂᓂᓂᓄᓐ ᐅᓂᓂᓂᓄᓐ 1:1,100,000

N

Baffinland ᐅᓂᓂᓂᓄᓐ ᐅᓂᓂᓂᓄᓐ **FIGURE 2**