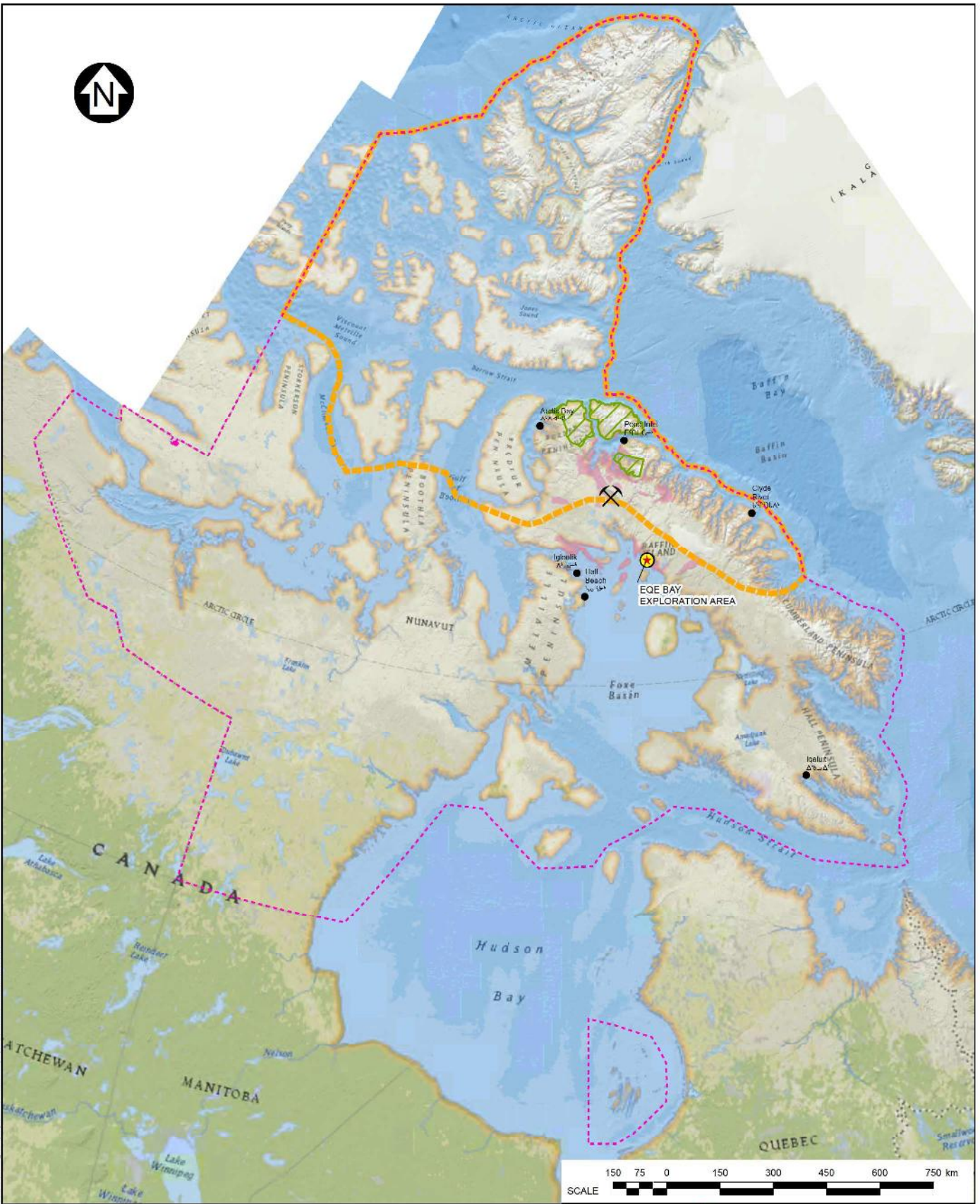


**Eqe Bay Exploration Program
Type 'B' Water Licence Application**

Attachment 16

Eqe Bay Figures

(1 – 3)



- LEGEND**
- COMMUNITY
 - ✂ MARY RIVER PROJECT
 - ★ EQE BAY EXPLORATION AREA
 - NUNAVUT SETTLEMENT AREA
 - NORTH BAFFIN PLANNING REGION
 - SHILMIK NATIONAL PARK
 - IOL SURFACE AND SUBSURFACE INCLUDING MINERALS
 - IOL SURFACE ONLY EXCLUDING MINERALS

NOTES

- BASE MAP DATA AND MAPS (ONLINE) (2016). REDLANDS, CA: ENVIRONMENTAL SYSTEMS RESEARCH INSTITUTION. (2016). REDLANDS, CA.
- NORTH BAFFIN PLANNING BOUNDARY FROM NUNAVUT PLANNING COMMISSION (2017).
- BASE MAP DATA AND MAPS (ONLINE) (2016). REDLANDS, CA: ENVIRONMENTAL SYSTEMS RESEARCH INSTITUTION. (2016). REDLANDS, CA.



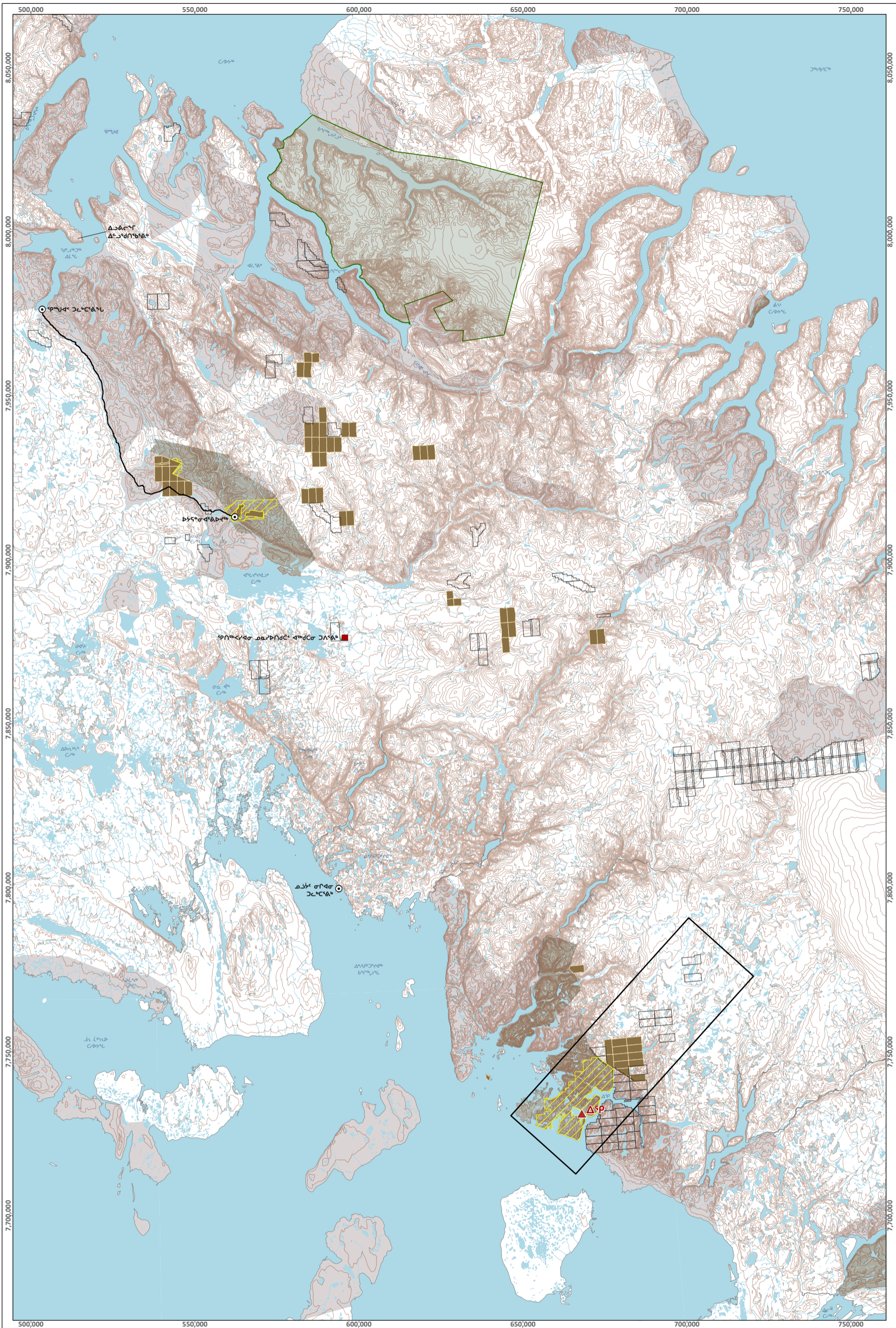
EQE BAY EXPLORATION PROGRAM

PROJECT LOCATION MAP
 ᐱᓕᓕᓐ ᓇᓐ ᓂᓪᓄᓇᓐ ᓂᓴᓐ ᓴᓐ

Knight Piésold CONSULTING		PIA NO NB102-181/46	RFT NO NB18-00244
		FIGURE 1	
			REV 0

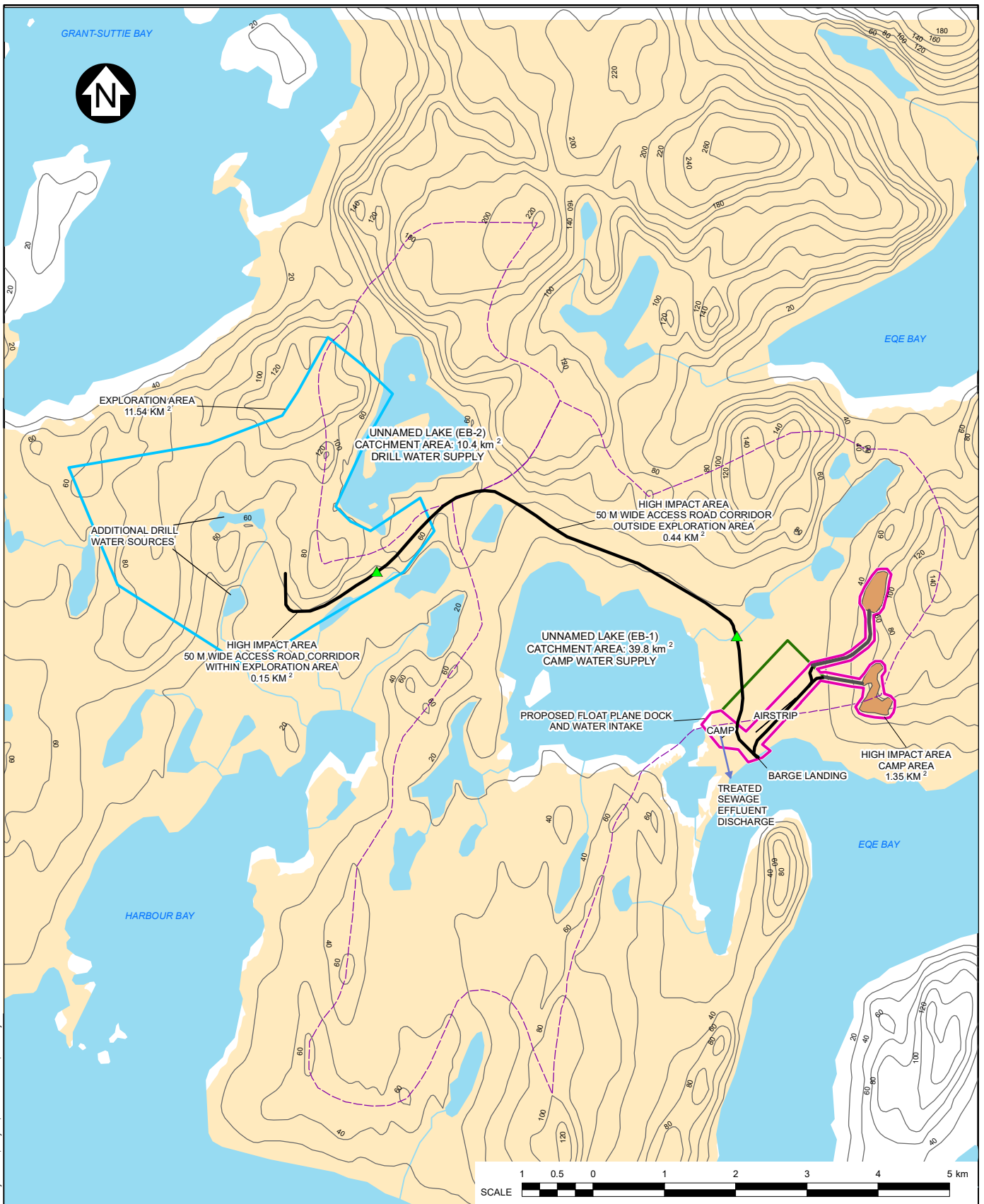
REV	DATE	DESCRIPTION	AV	RF	RAC
			(I)-S(SN)-D	(D)RAWN	(R)-S(V)-H
0	25APR'18	ISSUED WITH TRANSMITTAL			

SAVED: I:\1102\00181\46\GIS\Fig1A01_00_18-00244 - Fig 1 - project location.mxd, Apr 25, 2018 11:35 AM, rnarima



SAVED: C:\Users\Krislana.Patras\Documents\AccGIS\Projects\Reporting\Annual Reports\Type A\2025\Fig 2_Protect Activities_2025\Fig 2_Protect Activities_2025.aprx; 20-Mar-26

<p>ᐃᓗᓇᓕᓕᓐ ᐃᓕᓕᓐᓴᓐᓴᓐ</p> <ul style="list-style-type: none"> ▲ ᐃᓕᓕᓐᓴᓐᓴᓐ ᐃᓕᓕᓐᓴᓐᓴᓐ ᐃᓕᓕᓐᓴᓐᓴᓐ ● ᐃᓕᓕᓐᓴᓐᓴᓐ ᐃᓕᓕᓐᓴᓐᓴᓐ ᐃᓕᓕᓐᓴᓐᓴᓐ ■ ᐃᓕᓕᓐᓴᓐᓴᓐ ᐃᓕᓕᓐᓴᓐᓴᓐ ᐃᓕᓕᓐᓴᓐᓴᓐ — ᐃᓕᓕᓐᓴᓐᓴᓐ ᐃᓕᓕᓐᓴᓐᓴᓐ ᐃᓕᓕᓐᓴᓐᓴᓐ — ᐃᓕᓕᓐᓴᓐᓴᓐ ᐃᓕᓕᓐᓴᓐᓴᓐ ᐃᓕᓕᓐᓴᓐᓴᓐ 			<ul style="list-style-type: none"> ᐃᓕᓕᓐᓴᓐᓴᓐ ᐃᓕᓕᓐᓴᓐᓴᓐ ᐃᓕᓕᓐᓴᓐᓴᓐ ᐃᓕᓕᓐᓴᓐᓴᓐ ᐃᓕᓕᓐᓴᓐᓴᓐ ᐃᓕᓕᓐᓴᓐᓴᓐ ᐃᓕᓕᓐᓴᓐᓴᓐ ᐃᓕᓕᓐᓴᓐᓴᓐ 			<ul style="list-style-type: none"> ᐃᓕᓕᓐᓴᓐᓴᓐ ᐃᓕᓕᓐᓴᓐᓴᓐ ᐃᓕᓕᓐᓴᓐᓴᓐ ᐃᓕᓕᓐᓴᓐᓴᓐ ᐃᓕᓕᓐᓴᓐᓴᓐ ᐃᓕᓕᓐᓴᓐᓴᓐ 		
<p>ᐃᓕᓕᓐᓴᓐᓴᓐ ᐃᓕᓕᓐᓴᓐᓴᓐ</p> <p>ᐃᓕᓕᓐᓴᓐᓴᓐ ᐃᓕᓕᓐᓴᓐᓴᓐ ᐃᓕᓕᓐᓴᓐᓴᓐ</p>			<p>ᐃᓕᓕᓐᓴᓐᓴᓐ ᐃᓕᓕᓐᓴᓐᓴᓐ</p> <p>ᐃᓕᓕᓐᓴᓐᓴᓐ ᐃᓕᓕᓐᓴᓐᓴᓐ ᐃᓕᓕᓐᓴᓐᓴᓐ</p>					
<p>Projection: NAD 1983 UTM ZONE 17N. Base Map: © King's Printer for Ontario, 2026.</p>			<p>0 5 10 20 30 km ᐃᓕᓕᓐᓴᓐᓴᓐ 1:1,100,000</p>					
<p>Baffinland</p>			<p>ᐃᓕᓕᓐᓴᓐᓴᓐ ᐃᓕᓕᓐᓴᓐᓴᓐ FIGURE 2</p>					



SAVED: \\11020018\14\BAGS\Fig3 - site layout.mxd; May 14, 2018 11:28 AM; dmsley

LEGEND	
	PROPOSED CULVERT IN FISH BEARING WATERS
	CONTOURS
	PROPOSED ACCESS ROAD/TRAIL
	QUARRY ACCESS ROAD
	WATER
	POTENTIAL QUARRY AREA
	POTENTIAL DEVELOPMENT AREA
	EXPLORATION AREA
	HIGH IMPACT AREA - CAMP AREA
	CATCHMENT BOUNDARY
	NTI EXPLORATION AGREEMENT SUB-AREA

NOTES:	
1.	COORDINATE GRID IS IN METRES. COORDINATE SYSTEM: NAD 1983 UTM ZONE 17N.
2.	CONTOUR INTERVAL IS 20 METRES.
3.	LOCATIONS AND SIZING OF PROJECT FACILITIES IS APPROXIMATE ONLY.

EQE BAY EXPLORATION PROGRAM	
PROPOSED EXPLORATION AREA LAYOUT	
	PIA NO. NB102-181/46 REF NO. NB18-00244
FIGURE 3	
REV	0