



# STARFIELD RESOURCES INC.

130 Adelaide Street West  
Suite 2210  
P.O. Box 8  
Toronto, ON M5H 3P5  
T: 416.860.0400  
F: 416.860.0822  
Toll Free: 1.877.233.2244

May 27, 2008

Phyllis Beaulieu  
Manager of Licensing  
Nunavut Water Board  
P.O. Box 119  
Gjoa Haven, Nunavut X0B 1J0

Phone: (867) 360-6338  
Fax: (867) 360-6369

Dear Phyllis Beaulieu:

**RE: WATER LICENCE #2BE-FER0712 APPROVAL REQUEST TO CONDUCT LAND BASED DRILLING  
WITHIN 30 METRES OF A WATER BODY, FERGUSON LAKE PROJECT, KIVALLIQ REGION,  
NUNAVUT**

Starfield respectfully requests approval from the Nunavut Water Board to conduct land based drilling within 30 metres of the normal high water mark of an unnamed creek at the Ferguson Lake Project as per Part F, Item 1 of water licence 2BE-FER0712. This letter outlines the mitigation measures that the company will undertake to ensure the protection of the creek. Please find enclosed a map showing the location of the creek and a map showing the location of the drill targets that will be located within 30 metres of the creek. Starfield is requesting approval to drill a total of 7 drill targets within the 30 metres, the closest of these to the creek will be approximately 10 metres from the normal high water mark.

A number of mitigation measures will be undertaken to ensure that the water quality of the creek is not impacted by the drilling. These mitigation measures include; diapering underneath areas of the drill that could potentially have leaks and drips, creating a dyke/berm around the drill collar to prevent fines in the water coming up from the drill hole from reaching the creek, keeping all hydrocarbons and other chemicals on/in secondary containment, using waddles, pumping drill water a minimum of 31 metres from the normal high water mark of any surrounding water body, and close monitoring on a regular basis throughout the drill program.

### The Drill Unit

The drill will have a “diaper” underneath it at all times to protect against the potential of any spilled or leaking fluids from reaching the receiving environment, see photo for example.



### Waddles (Tiger Tails)

Waddles sometimes referred to as Tiger Tails, will be placed around the drill to prevent any “dirty” water (coming up from the drill hole) from being released in to the receiving environment. These waddles act as a filter, removing fines from the water as it passes through.

### Fuel Storage

All fuel will have secondary containment. The photo below shows the secondary containment units that will be used at the drill. These secondary containment units have a sump capacity of just over 250 litres, the specification sheet is enclosed.



**Drill Water**

Drill water will be pumped away from the creek to a sump that will be located a minimum of 31 metres from the normal high water mark of any nearby water-body. The sump will be visually inspected daily to ensure that there is no potential for run-off entering any water-body.

A copy of the Spill Contingency Plan will be kept at the drill. A spill kit is also located at the drill.

If you have any questions regarding this request, please do not hesitate to contact Allison Rippin Armstrong at (780) 995-2499, email [ar\\_enviro@yahoo.ca](mailto:ar_enviro@yahoo.ca).

Kind regards,  
**Starfield Resources Inc.**

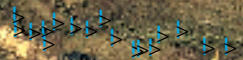
Fred Mason  
Vice President Operations

Enclosure

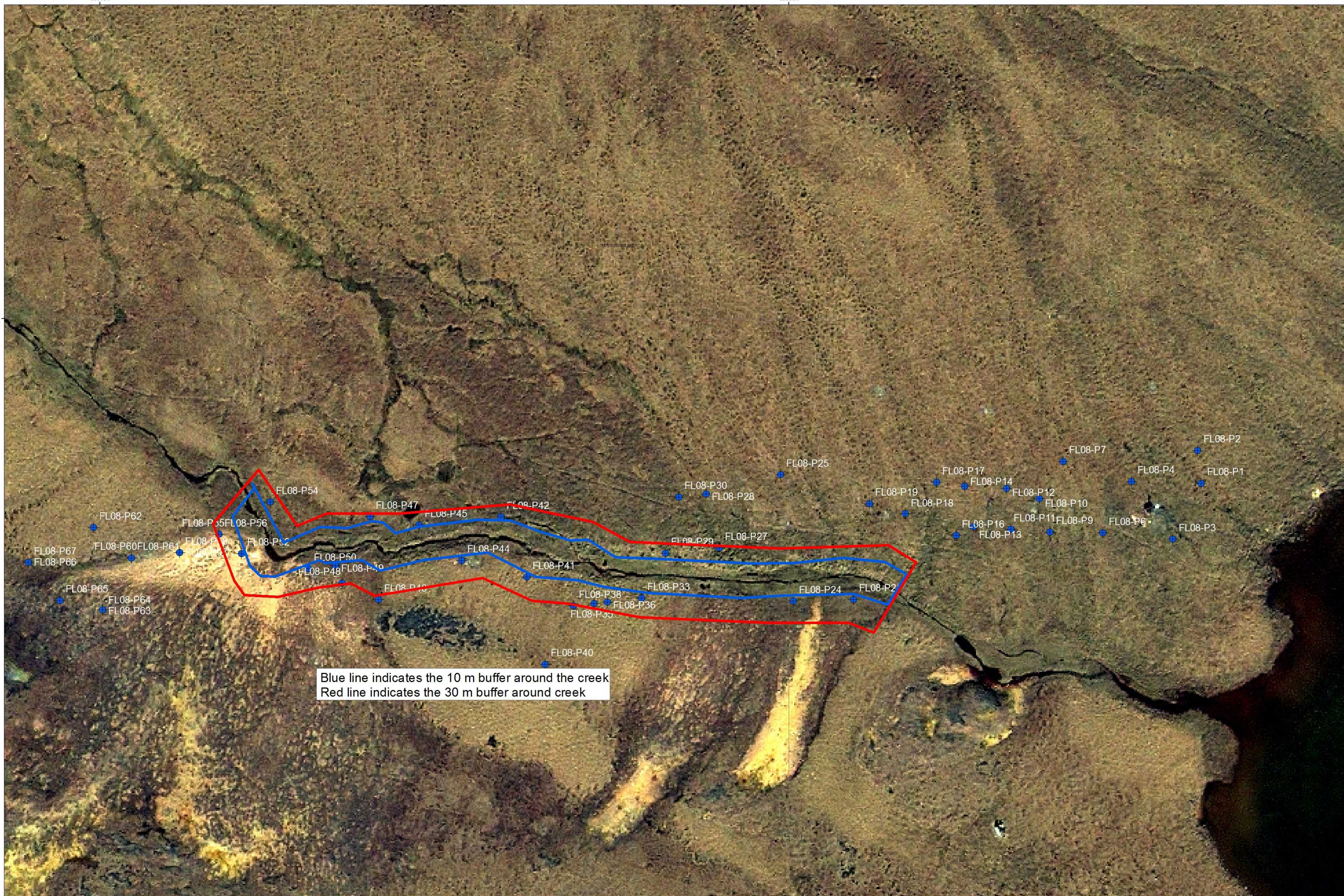


Camp

Location of drill targets along the creek. Approximately 7 targets are located within 30 m of the normal high water mark of the creek.











## TOUGH JOB POLY-SPILLPALLET™ 2000

This secondary containment system is engineered to meet the rigors of today's regulatory environment. With 100% polyethylene, it provides excellent chemical resistance. Optional tarp for outdoor storage and drain hole with plug available.

- Meets EPA 40 CFR 264.175
- Holds up to 2,000 lbs UDL
- Forkliftable
- Removable grates for easy cleaning

Optional tarp available (Product No. 5063-YE, p. 19).

## LOW-PROFILE IN-LINE POLY-SPILLPALLET™ 3000 WHERE NO DRUM STORAGE HAS GONE BEFORE.

Storing drums in-line near the wall, between columns, and in all those spaces you thought were unusable. Optional tarp for outdoor storage, and optional drain.

- Holds four 55-gallon drums
- Low 12" profile
- Holds up to 3,000 lbs UDL wt.
- Raised edge on back and sides helps orient barrels on pallet
- Non-skid, removable grates
- 66-gallon sump capacity meets EPA 40 CFR 264.175
- 100% polyethylene



Optional tarp available  
(Product No. 5062-YE, p. 19).



## POLY-SLIM-LINE™ 6000 SLIM IS IN.

Poly-Slim-Line 6000 offers all of the same advantages as our Poly-SpillPallet 6000... and more! This addition to our pallet family features a low, 12" profile and a UDL load bearing capacity of 6000 lbs. Optional drain.

Optional tarp available (Product No. 5061-YE, p. 19).

## POLY-SPILLPALLET™ 6000 DESIGNED TO HOLD THE HEAVY LOAD.

Rated at 6,000 lbs. UDL weight with a 83-gallon sump capacity that meets EPA 40 CFR 264.175. Square 50" x 50" footprint saves space yet easily holds four 55-gallon drums. Includes the same rugged features as the 2000. Optional drain.

- Two removable grates hold up to 6,000 lbs. of UDL wt.
- Forkliftable from all sides



Optional tarp available (Prod. No. 5064-YE, p. 19).

## SPECIFICATIONS

### POLY-SPILLPALLET™ 2000

Product No.:	5253-YE
	5253-YE-D (w/drain)
Dimensions:	53.5" L x 29" W x 17" H
	136 cm x 74 cm x 43 cm
Weight:	63 lbs. / 28.35 kg
Load Bearing	
Capacity UDL:	2000 lbs. / 900 kg
Sump Capacity:	58 gal. / 220.4 liters
Regulations:	EPA 40 CFR 264.175, SPCC and NPDES

### INLINE POLY-SPILLPALLET™ 3000

Product No.:	5102-YE
	5102-YE-D (w/drain)
Dimensions:	98" L x 25.25" W x 12" H
	249 cm x 64 cm x 30 cm
Weight:	80 lbs. / 36 kg
Load Bearing	
Capacity UDL:	3000 lbs. / 1350 kg
Sump Capacity:	66 gal. / 250.8 liters
Regulations:	EPA 40 CFR 264.175, SPCC and NPDES

### POLY-SLIM-LINE™ 6000

Product No.:	5400-YE
	5400-YE-D (w/drain)
Dimensions:	54" L x 54" W x 12" H
	137 cm x 137 cm x 43 cm
Weight:	91 lbs. / 41 kg
Load Bearing	
Capacity UDL:	6000 lbs. / 2700 kg
Sump Capacity:	66 gal. / 250.8 liters
Regulations:	EPA 40 CFR 264.175, SPCC and NPDES

### POLY-SPILLPALLET™ 6000

Product No.:	5001-YE
	5001-YE-D (w/drain)
Dimensions:	50" L x 50" W x 17" H
	127 cm x 127 cm x 43 cm
Weight:	83 lbs. / 315.4 kg
Load Bearing	
Capacity UDL:	3000 lbs. / 1350 kg
Sump Capacity:	66 gal. / 250.8 liters
Regulations:	EPA 40 CFR 264.175, SPCC and NPDES