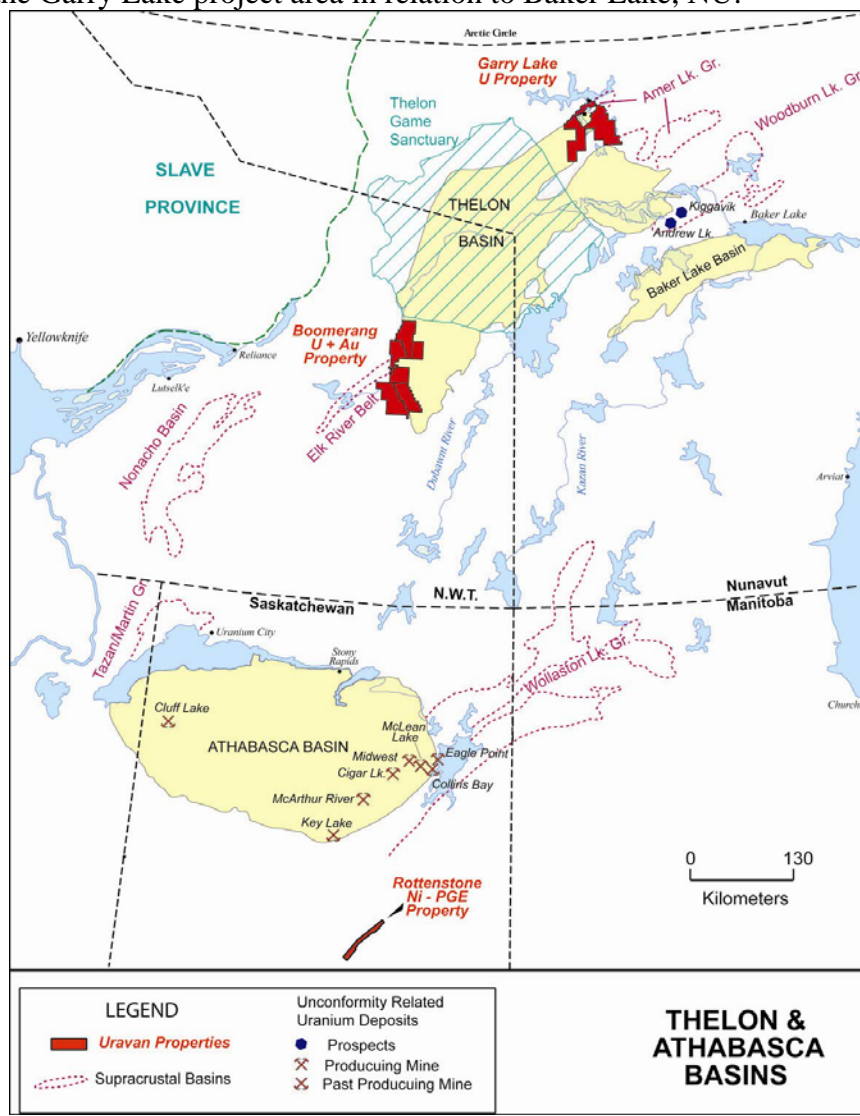


Property Location

The Garry Lake uranium property consists of 236 mining claims that cover the northern margin of the Thelon Basin as well as extending southwards into the basin (Figure 1). This property is located on the northern edge of the Thelon basin, approximately 245 kilometers NW of Baker Lake, Nunavut.

Figure 1. Location of the Garry Lake project area in relation to Baker Lake, NU.



Description of on-site logistical support

This winter geophysical programs will be run logistically from a base camp located at ~65° 34' 52"N, 100° 00' 31" or ~453480 mE / 7273890 mN (NAD 83). The camp will comprise of 2 sleep tents, 1 kitchen tent, 1 dry tent and outhouse and will accommodate 5 persons. The camp will be serviced once a week from Baker Lake by



fixed wing aircraft on ski-wheels. Empty fuel drums, garbage and sanitary waste will be removed weekly on the supply flights. The camp will be removed at the end of the project.

Description of the geophysical air borne program

The April-May 2007 geophysical program is entirely airborne. There are no ground geophysical surveys and the only camp imprint will be the <2 hectare base camp, 4 tents and fuel cache. The air borne survey will be completed using an AStar helicopter which will fly the entire Garry Lake land holdings, 236 mineral claims totaling 551,849 acres (Figure 2, 3), on a pre-designed flight pattern.

Figure 2. Location of the Garry Lake mineral claims

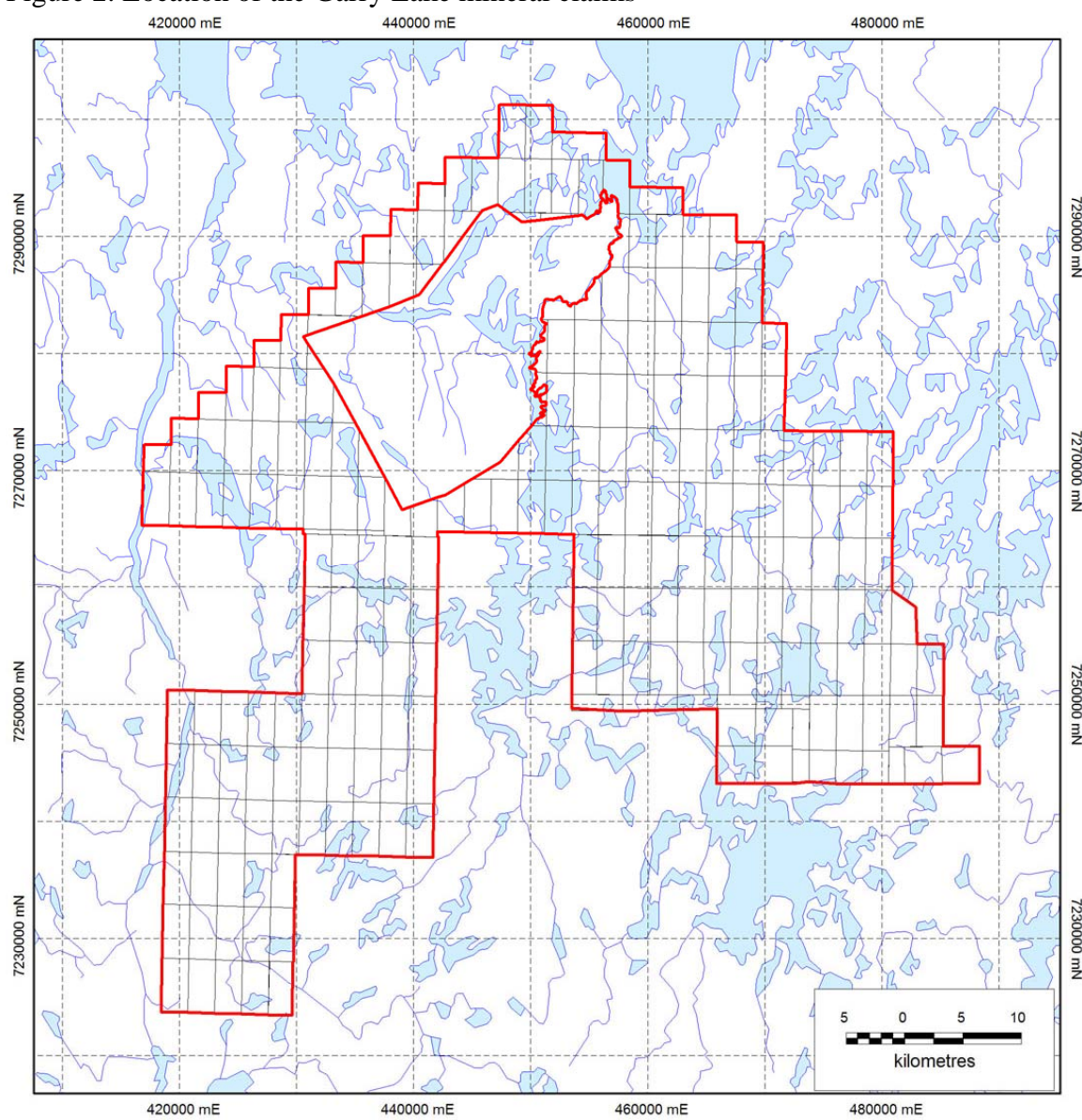
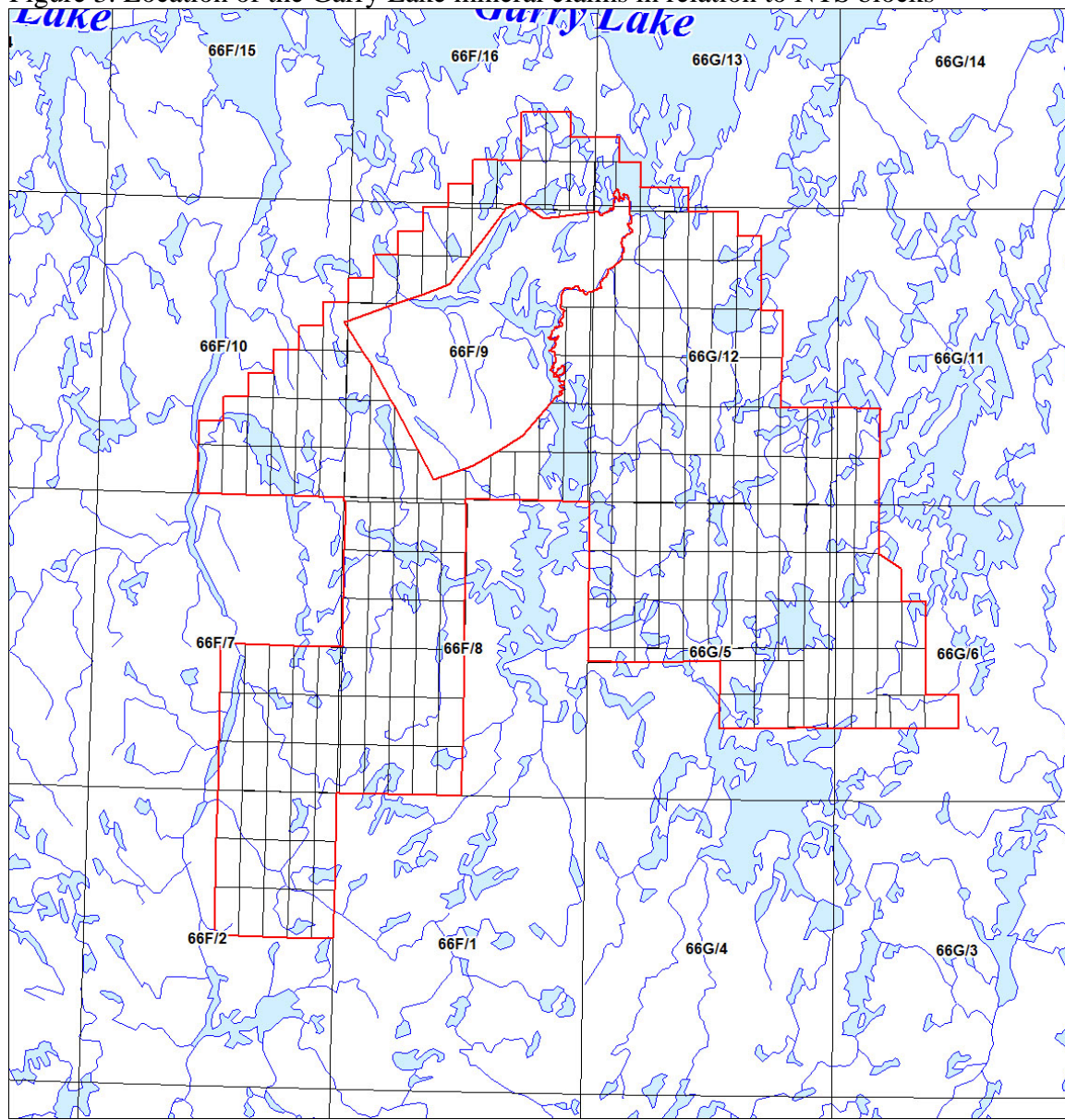


Figure 3. Location of the Garry Lake mineral claims in relation to NTS blocks



Hazardous Substances and Waste Dangerous Goods (HSWDG) – Management & Spill Contingency Plan:
Garry Lake Project – geophysical survey component

Company: Uravan Minerals - VP Exploration: Allan Miller, P.Geo. and as backup Senior Geologist: Ian Fraser, P.Geo.



Searching for the Metals of the Future

Project 24-hour contact person / phone number: Allan Miller 613-2315656; back up Ian Fraser, contact number 403-2177359.

Petroleum products will be used to facilitate mineral exploration (property-wide airborne electromagnetic survey) for Uravan Minerals Inc. ("Uravan") on its Garry Lake Project, NU. The base camp and main fuel cache for the project is located at ~65° 34' 52"N 100° 00' 31" or ~453480 mE / 7273890 mN (NAD 83), (Figures 1 & 2).

At the onset of the exploration program, the team leader will review Environmental Spill Control Regulations, Best Management Practice strategies and any other pertinent information with respect to the handling of fuels and other hazardous materials with all camp personnel and associated contractors.

Management – Storage of Petroleum Products

Petroleum products will consist of diesel fuel to operate coil stoves to heat camp facilities, gasoline to operate snow machines if on site and propane to operate camp facilities and Jet-b to operate the support helicopter. These products will be supplied in 205 liter barrels (diesel, gasoline and Jet-A) and 45 kg bottles (propane) and will be stored in individual caches at the camp site in an area underlain by sand and within an area 100m removed (and above the ordinary high water mark) from any nearby source of water and 100m removed from camp. It is anticipated that up to 230 drums of fuel will be delivered to the base camp and cached at the base camp. The 2e0 drums represent a one time maximum amount that will be drawn down and eliminated through the course of the air borne exploration program. Diesel fuel, propane and Jet-A could possibly be stored in small fuel caches near areas of reconnaissance geophysical flying.

Spill Contingency Plan

In the event of a spill of any of the petroleum products listed above, the following procedures will be initiated having due regard for the safety of the personnel involved in the procedures:

1. Upon recognizing a spill, the observer will inform the Camp Supervisor who in turn will organize personnel and then;
2. Determine the source of the spill and take immediate action to stop the spill; close open valve, bung, and position barrel if possible in such a way to prevent/stop further spillage.
3. Contain the spill and minimize the effects of the spill.
4. Initiate clean up with resources available, notably spill kits.
5. Report the spill to; **24 Hour Spill Report Line (867) 920-8130**; and pertinent departments: *DIAND Inspector (Iqaluit) (867) 979-6445; DFO (Iqaluit) (867) 967-8039; Environment Canada (Iqaluit) (867) 475-4644.*
6. Report spill to company representatives; **Uravan Minerals Inc. 403 264 2630 and 613-2315656.**
7. Consult with 24 Hour Spill Report Line to determine further action, materials, manpower if necessary.
8. Complete clean up, restore as best as possible the area affected to its pre spill state.
9. Properly dispose of damaged drums and all materials used in the clean up only with the consent of the proper authorities.



10. Prepare and submit an accident-incident short report and then a full written report documenting, location and time of spill within 30 days; the type and quantity of pollutant spilled; description of spill-site area; names of all persons notified of spill; the known causes and effects of spill; remedial action that took place with respect to the spill; and list – suggest any further action or work contemplated or required to return the affected area to its pre-spill state.

As part of the Spill Contingency Plan the following equipment – measures will be on hand, undertaken at the main fuel cache and the fuelling stations:

1. Large spill kits. Note also small spill kits will be positioned at the water intake pump at camp and at all areas where refueling takes place.
2. Receptacles such as empty drums, metal bins, and large garbage bags for the purpose of storing contaminated soak pads and spill kits.
3. Drip pans and drip pads will be utilized at all drill sites and at water intake pump locations.
4. Shovels, ice picks, additional soak padding, absorbent rolls will accompany the drill to each drill site location and will be positioned at the main fuel cache.
5. Regular inspection, maintenance of all valves, wobble pumps involved in the camp operation will be implemented as part of the camp routine.
6. Regular inspection of all fuel caches.

Lists of procedures, contact phone numbers will be placed throughout the camp site, notably in tents, kitchen and dry.