

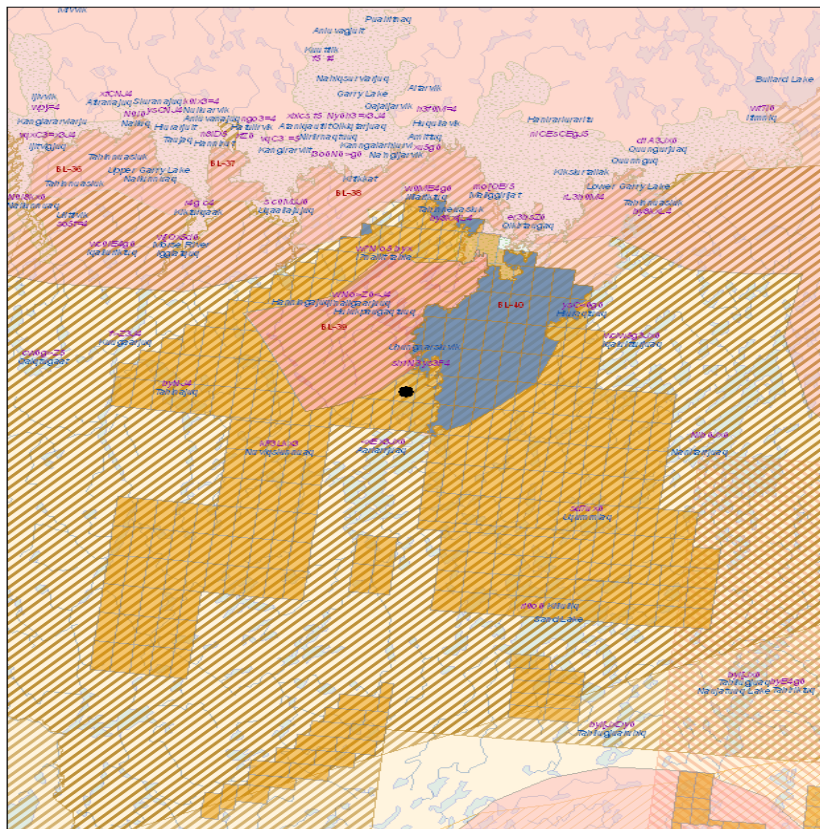


Uravan-Land Administration Report

66.1426628

-101.2280934

-98.8928469



64.8880765



Kivalliq Inuit Association (KIA)
Environmental Management System

www.kivalliqinuitassociation.com

The following land types and parcel numbers, where applicable, were found in your project area. All land adjacent to any of these areas that is not designated should be considered crown land. If the list is empty then all land in the project area is crown land.

Inuit-Owned Lands (IOL) - Surface and Subsurface Rights (19.2.1(a))

Subsurface IOL for which there were no pre-existing rights, mineral rights are administered by NTI. Permission to enter these lands for the purpose of carrying out exploration must be obtained from the appropriate Regional Inuit Association (RIA).

Kivalliq Inuit Association Keewatin

Baker Lake
BL-39

Inuit-Owned Lands (IOL) - Surface Rights Only (19.2.1(b))

Mineral rights are held by the Crown and administered by INAC. Permission to enter these lands for the purpose of carrying out exploration must be obtained from the appropriate Regional Inuit Association (RIA) before any work may be carried out.

Kivalliq Inuit Association Keewatin

Baker Lake
BL-36
BL-40

BL-37

BL-38

Inuit-Owned Lands (IOL) - Surface and Subsurface Rights (19.2.1(a))

Kivalliq Inuit Association Lands Department

Luis Manzo

Director of Lands

P.O. Box 340, Sakku Building

Rankin Inlet X0C 0G0 Nunavut

Tel:(867) 645-2800

Fax: (867)-645-2348

email: Imanzo@kivalliqinuit.ca

Nunavut Tunngavik Inc. Lands and Resources Department

P.O. Box 1269

Cambridge Bay X0B 0C0 Nunavut

Tel:(867) 983-5600

Fax: (867) 983-5624

email: ntilands@ntilands.com

Inuit-Owned Lands (IOL) - Surface Rights Only (19.2.1(b))

Indian and Northern Affairs Canada

P.O. Box 2200

Iqaluit X0A 0H0 Nunavut

Tel:(867) 975-4500

Fax: (867) 975-4560

Kivalliq Inuit Association Lands Department

Luis Manzo

Director of Lands

P.O. Box 340, Sakku Building

Rankin Inlet X0C 0G0 Nunavut

Tel:(867) 645-2800

Fax: (867)-645-2348

email: Imanzo@kivalliqinuit.ca

Disclaimer

This report was generated from data in the InSITU Integrated Environmental Management System®. The data have been have collected and compiled from a wide variety of sources(see metadata and source attribute information supplied with the data). While every effort has been made to ensure the accuracy and completeness of the data, GeoArctic Ltd. disclaims any responsibility for the accuracy or correctness of the data.

If you wish to report any problems, errors or discrepancies in the data or in the functioning of the report then please contact GeoArctic Ltd. at support@geoarctic.com

In no event shall GeoArctic become liable to users of data or reports generated from the InSITU Integrated Environmental Management System, or any other party, for any loss or damages, consequential or otherwise, including but not limited to time, money, or goodwill, arising from the use, operation or modification of the data. In using these data, users further agree to indemnify, defend, and hold harmless GeoArctic Ltd. for any and all liability of any nature arising out of or resulting from the lack of accuracy or correctness of the data, or the use of the data.