



Plate 4. Work in Progress on Airstrip, Showing Crusher and Stockpiles.



Plate 5. Work in Progress on Airstrip.



Plate 6. Crusher Plant.



Plate 7. Completed Work on Airstrip, Road and Camp Laydown Areas.



Plate 8. Completed Airstrip.



Plate 9. Completed Camp Laydown Areas.
(Previously existing fuel tanks are green; new fuel tanks are white.)

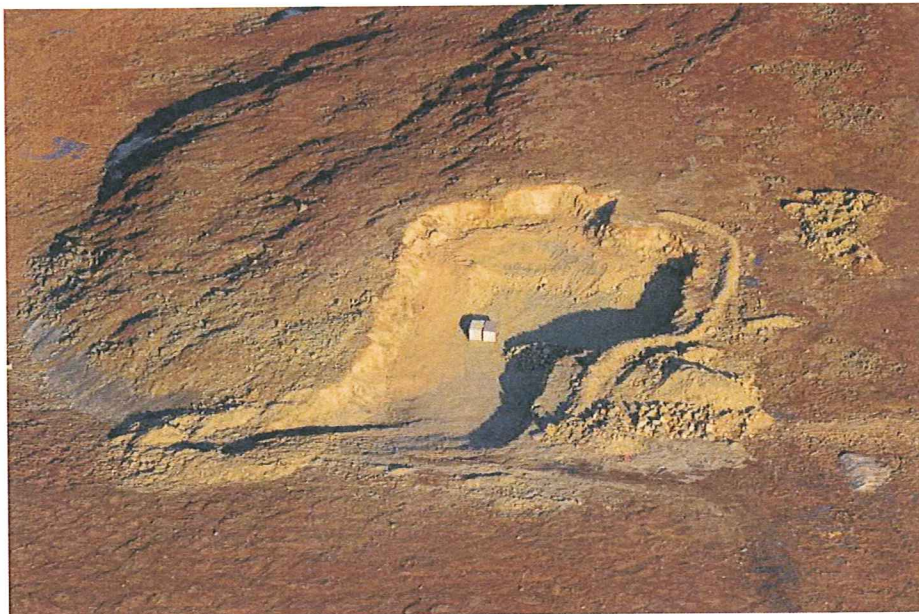


Plate 10. Quarry on Completion of Work.

TABLES 1-2

TABLE 1

May 26, 2013 Goose Lake Project, Winter 2013
 Asbuilt Volume Estimates: Prepared by M. Caley-Nuna Survey using Updated Airstrip Design 2013 March 28
 Volume Conversion Assumptions (from from Dec.12 2012 Sabina Gold & Silver Provisional Volume Estimate)

FROM\TO	BCM	ECM	LCM
BCM		1.10	1.30
ECM	0.91		1.18
LCM	0.77	0.85	

As Built Items - May 26, 2013	Dimensions				Material Type			Comments
	Length [m]	Width [m]	Slope [Ratio]	Thickness [m]	ROQ [ECM]	4" - [ECM]	3/4" - [ECM]	
All-Weather Airstrip - includes Aprons (2x30mx30m)								
Airstrip, ROQ	914	31.0	1.5:1	0.2-1.1	12,595			Volume is toe to toe
Airstrip, 4" material	914	30.3	1.5:1	0.2-0.35		5,456		Volume is next line
Airstrip, 3/4" crush	914	30.0	1.5:1	0.15			3,290	Volume is next line
Access Road Airstrip to Camp - includes Turnout								
Access Road, ROQ	539	5	1.5:1	0.42	1,328			Height is above 2012 access road
Access Road, 3/4" crush	539	5	1.5:1	0.08			170	
Camp Entrance Laydown Pad								
Camp Entrance Laydown Pad, ROQ	47	53.0	1.5:1	0.78	1,688			Sub base is comprised of 1400 ECM oversize
Camp Entrance, 3/4" crush	47	53.0	1.5:1	0.11			213	
Fuel Tank Pad								
Fuel Tank Pad, ROQ	63.5	31.0	1.5:1	0.5-1.6	1,856			Includes 18m x 28m ramp
Fuel Tank Pad, 4" material (under fuel tanks)	29	20.0	1.5:1	0.23		126		Covered with crush up to tanks
Fuel Tank Pad, 3/4" crush (non-fuel tank footprint)	32.5	31.0	1.5:1	0.14			181	Plus 31m x 21m North of Tanks
Crusher Pad								
North Crusher Pad, ROQ	27	24.0		0.29	294			North of Access Road (Extension 52m x8m)
South Crusher Pad, ROQ	96	35.0		0.39	981			South of Access Road
Camp Upgrades								
Warehouse Pad, ROQ	25	31.0		0.71	457			
Camp Roads, ROQ	131	7.0		0.22	178			South West Corner Laydown to below fuel tanks
Camp Roads, 3/4" crush	131	7.0		0.07			49	
TOTAL LOAD, HAUL & PLACE (ECM)								
					19,377	5,581	3,902	
TOTAL LOOSE VOLUME (LCM)								
					22,796	6,566	4,590	
TOTAL DRILL & BLAST (BCM)								
					17,633	5,079	3,551	
Stockpiles (at Crusher Pad)								
Stockpiles, ROQ (includes North & South Stockpiles)					1,768			North: 359 ECM; South: 1309 ECM
Stockpile, 4" material						1,184		
Stockpile, 3/4" crush							1,078	
TOTAL (not inc. stockpiles)					28,860 ECM			
					33,953 LCM			
					26,263 BCM			