

- PHOTOGRAPHS -

PHOTOGRAPH 11



Mara River (downstream sample location) looking downstream.

PHOTOGRAPH 12



Banana Lake looking south with Camp Lake in background.

- PHOTOGRAPHS -

PHOTOGRAPH 13



South end of Banana Lake looking north.

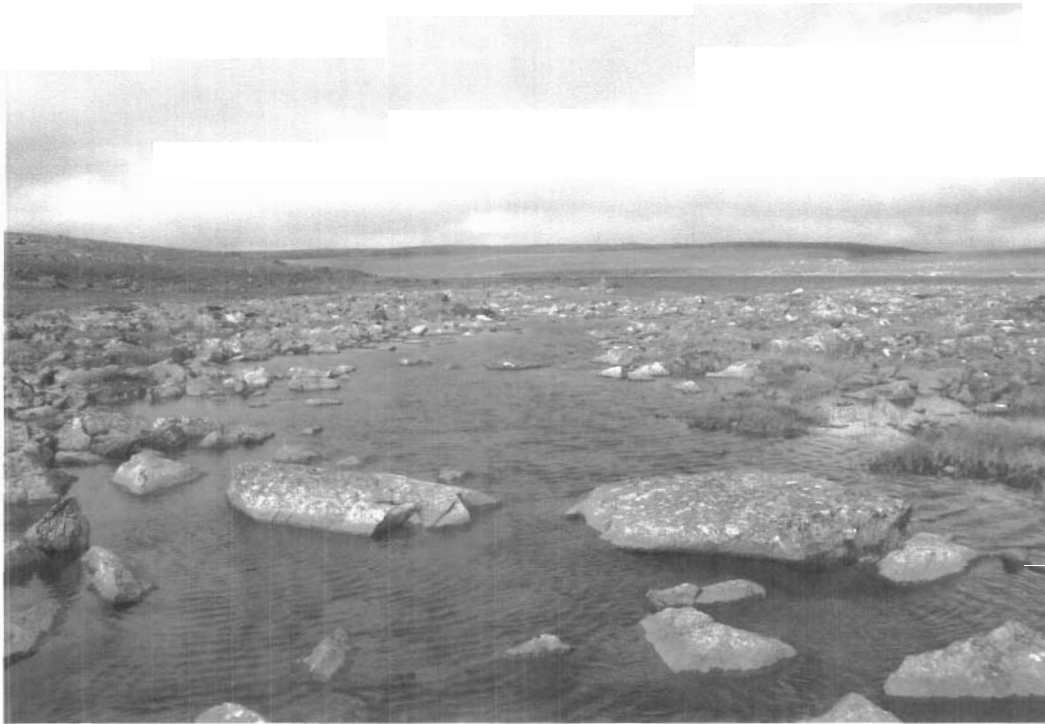
PHOTOGRAPH 14



South end of Banana Lake looking south towards outlet. Camp can be seen in the background.

- PHOTOGRAPHS -

PHOTOGRAPH 15



Outflow from Banana Lake looking upstream towards Banana Lake.

PHOTOGRAPH 16



Outflow from Banana Lake looking downstream towards Camp Lake.

- PHOTOGRAPHS -

PHOTOGRAPH 17



Camp Lake from south end looking northwest towards camp.

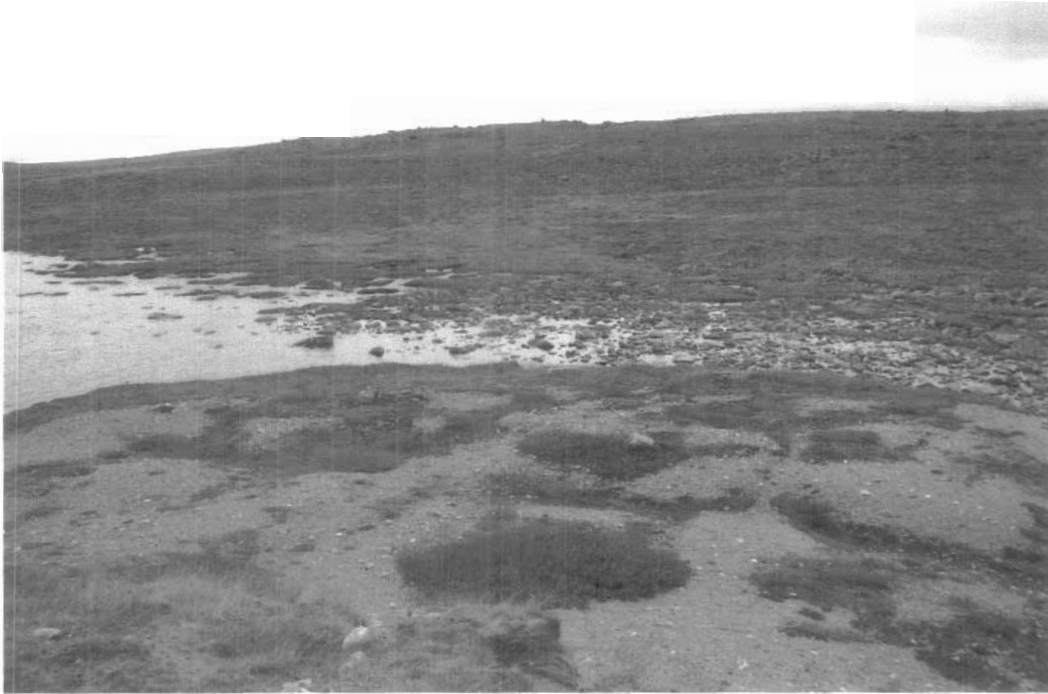
PHOTOGRAPH 18



Camp Lake from south east end looking north towards inlet from Banana Lake.

- PHOTOGRAPHS -

PHOTOGRAPH 19



Outlet of Camp Lake flowing south to Upper Sunken Lake.

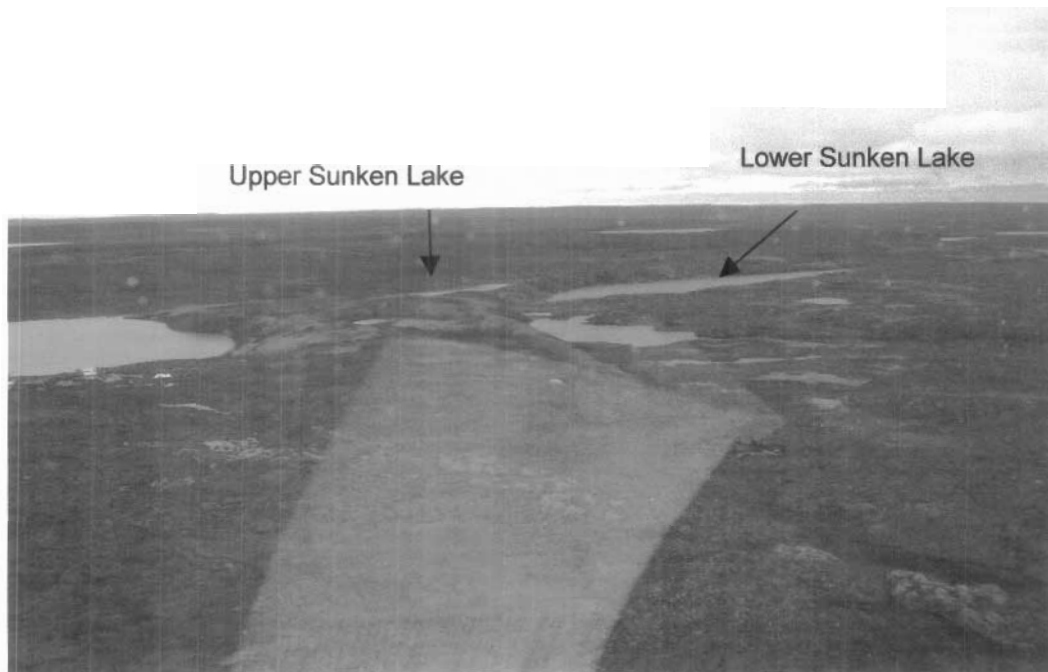
PHOTOGRAPH 20



Relic channel at northwest corner of corner of Camp Lake

- PHOTOGRAPHS -

PHOTOGRAPH 21



Upper Sunken Lake

Lower Sunken Lake

Camp Lake on left with Upper and Lower Sunken Lakes in background.

PHOTOGRAPH 22



Upper Sunken Lake from north end with drainage channel from Camp Lake in the foreground

- PHOTOGRAPHS -

PHOTOGRAPH 23



Upper Sunken Lake looking south towards outlet with esker on west side.

PHOTOGRAPH 24



Outlet of Upper Sunken Lake.

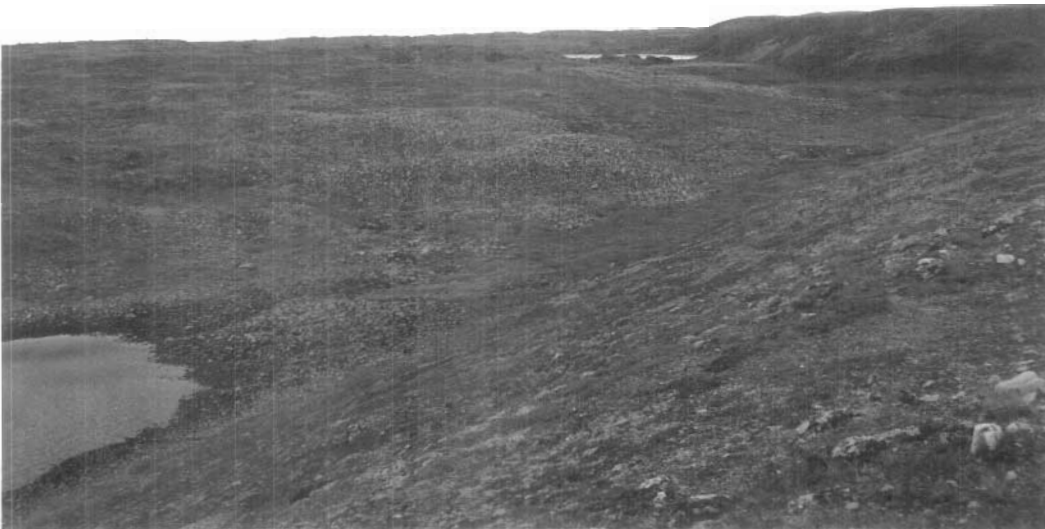
- PHOTOGRAPHS -

PHOTOGRAPH 25



Lower Sunken Lake looking south towards outlet.

PHOTOGRAPH 26



Inlet of Lower Sunken Lake northwest from esker.

- PHOTOGRAPHS -

PHOTOGRAPH 27



Looking south from esker with Upper Sunken Lake on the left and Lower Sunken Lake of the right.

PHOTOGRAPH 28



Drainage downstream of Upper Sunken Lake.

- PHOTOGRAPHS -

PHOTOGRAPH 29



Mineralized area in drainage downstream of Upper Sunken Lake (looking upstream).

PHOTOGRAPH 30



Drainage downstream of Upper Sunken Lake below mineralized zrea.

- PHOTOGRAPHS -

PHOTOGRAPH 31



Camp Creek drainage system below inlet from Upper Sunken Lake (Hackett River in the upper left corner)

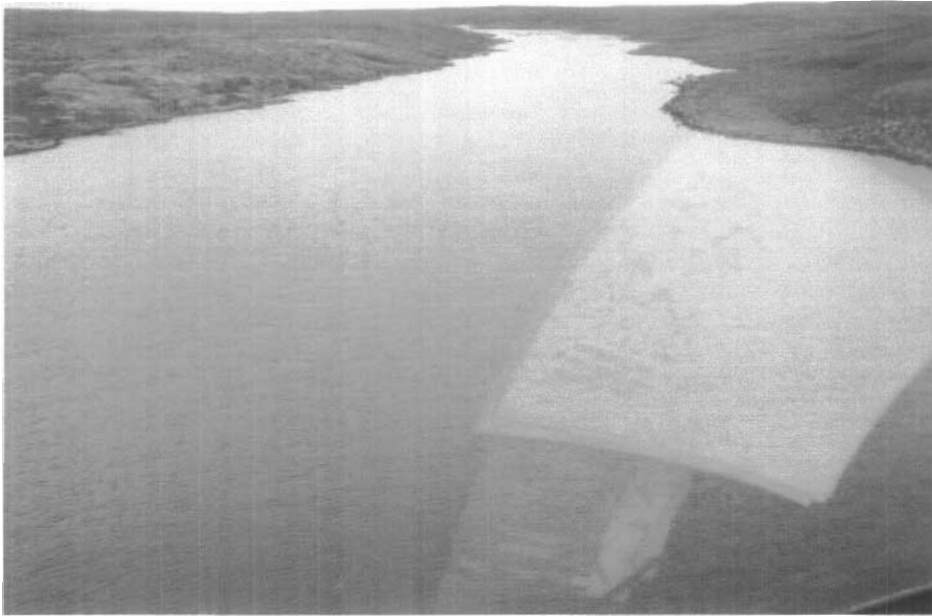
PHOTOGRAPH 32



Inlet of Camp Creek to Hackett River.

Attachment C
- PHOTOGRAPHS -

PHOTOGRAPH 33



Hackett River looking upstream above confluence with Camp Creek.

PHOTOGRAPH 34



Hackett River looking downstream below ripples below confluence with Camp Creek.

PHOTOGRAPH 35



Hackett River on right downstream of Cigar Lake.

PHOTOGRAPH 36



Cigar Lake from the southeast.