



WOLFDEN RESOURCES INC.

September 1, 2004

Mr. Jim Wall
Nunavut Water Board
P.O. Box 119
Gjoa Haven, NU
X0B 1J0

Dear Mr. Wall:

Re: Geotechnical Boreholes, Wolfden Resources Inc. High Lake Project,

Further to our discussion earlier today, we are writing for authorization from the Nunavut Water Board to drill two geotechnical boreholes within 30 m of a water body, with respect to Part F, item 2 of Wolfden's existing water licence NWB2HIG0305 for High Lake. These boreholes form part of the 2004 geotechnical field program approved by the Kitikmeot Inuit Association (KTL304C050) and Indian and Northern Affairs Canada (N2004C0037). We understand from your email of August 18, 2004 that the proposed geotechnical program for the High Lake Project falls under the existing water licence for High Lake (NWB2HIG0305).

Wolfden Resources requests authorization to drill two-25 m deep boreholes within 5 to 10 m of High Lake itself, as well as two small creeks that flow out from High Lake. The approximate locations of these two boreholes (HL3 and HL4) are shown on Figure 1. All other drill locations associated with the geotechnical program will be greater than 30 metres from any water body.

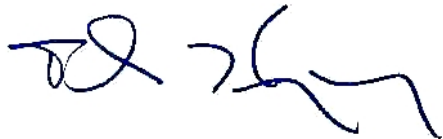
The purpose of drilling these two holes is to examine the foundation conditions below two potential dam sites, in support of a prefeasibility report and environmental assessment of the mine development at High Lake. A thermistor string will be installed in each borehole to determine ground temperatures and the potential presence of talik(s). Therefore, it is critical to drill as close as possible to the two creek outlets from High Lake.

The drilling fluid will be surface water without any additives. We intend to discharge this water through surface infiltration 30 m or greater from the high water mark of any water body. The maximum daily water use for drilling operations at High Lake is 50 cubic metres (Part C, item 1), and this will be respected during the geotechnical drilling activities. No sumps will be constructed to store drilling wastes due to the type of drill and nature of the program being conducted and there will be no wastewater discharge to surface water bodies.

We have crews on site working on other parts of the geotechnical program, and we are hoping to have authorization to drill the two above-mentioned boreholes by early next week.

We appreciate your time today in discussing this matter with us.

Yours truly,

A handwritten signature in blue ink, appearing to read 'John Knapp', with a stylized flourish at the end.

John Knapp
V.P. Operations

cc.

Ian Neil, Wolfden Resources Inc.

Dave Stevenson, Wolfden Resources Inc.

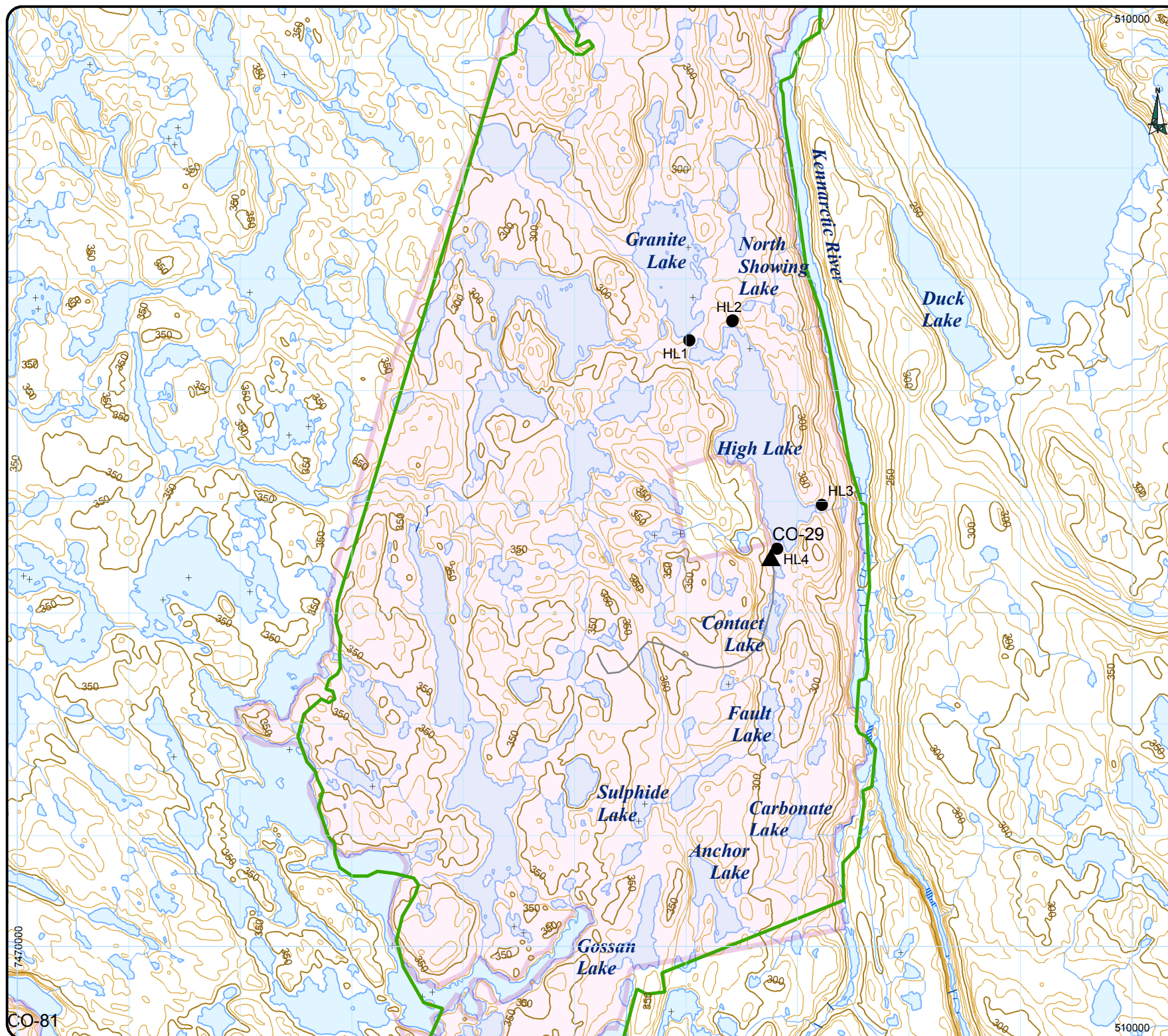
Glenda Fratton, Gartner Lee Limited

Alistair Kent, Gartner Lee Limited

Steve Morison, Gartner Lee Limited

Andy Isherwood, BGC Engineering Inc.

Jim Cassie, BGC Engineering Inc.



LEGEND:

- Approximate Drilling Locations
- Inuit owned lands permitted to Wolfden
- High Lake / Port Site Proposed and/or Existing Infrastructure
- ▲ Present Camp
- Ulu Site Facilities
- Ulu Site Roads
- Ulu Site Water Line
- Ulu Site Sewage Line
- ▨ Airstrip
- Inuit Owned Lands
 - Subsurface Rights
 - Surface Rights
- Relief and Landform Features**
 - Eskers
 - Wetlands
 - Wetland
 - String Bog
 - String Bog
 - Tundra Ponds
 - Tundra Pond
 - Sand
 - Underwater
 - Other
- Hazards to Navigation**
 - Rock
 - Water Disturbances
 - Rapids
 - Dry River Beds
 - Dry river bed
 - Waterbodies
 - Open Water
- Hydrographic Features**
 - Watercourses
 - Watercourse
- Elevation Contours**
 - Index Elevation (50m)
 - Intermediate Elevation (10m)
 - Index Depression (50m)
 - Intermediate Depression (10m)

DATA SOURCES AND DISCLAIMERS:

Project Study Area and Existing Proposed Infrastructure data compiled by Wolfden Resources Inc. and Gartner Lee Ltd.

Proposed roads data generated by BGC and GLL.

National Topographic Data Base (NTDB) compiled by Government of Canada, Natural Resources Canada (NRCan), at 1:50,000 scale.

Inuit Owned Lands compiled by Nunavut Tunguvik Incorporated. Inuit Owned Lands boundaries are approximate. They are based on the Designated Map Plan and are not based on any plan of survey.

Created By: AG
Reviewed By: GF
Date Issued: September 1, 2004
Project Number: 41004
File Name: Bx11_High_Lake_basemaps_15sep2004_v8.mxd
Revision: 1.1
Projection: UTM Zone 12 NAD83

0.5 Kilometers
Scale 1:45,000
Contour Interval: 10 m

WOLF DEN
RESOURCES INC.

Project: High Lake Project
Location: High Lake, Nunavut
Client: Wolfden Resources Inc.

High Lake Study Area
Base Map Series

Figure No. 1

Gartner Lee