

# **Environmental Management Plan**

## **HTX Minerals Corporation**



**March 2013**

## Table of Contents

1. Introduction .....	1
2. Environmental Protection Planning .....	1
3. Stakeholders .....	2
Archaeology .....	2
4. Flora and Fauna.....	2
Disturbance .....	3
Wildlife Protection .....	3
Human Safety.....	3
5. Land Disturbance .....	3
6. Drilling Operations .....	4
7. Waste Management Planning.....	4
8. Hazardous Materials .....	5
9. Rehabilitation .....	6

## Appendices

1. Wildlife Emergency Contacts .....	6
2. Garbage Burning Guidelines .....	8
3. Hazardous Wastes Contacts.....	49
4. Maps.....	51

## 1. Introduction

This Environmental Operation Plan applies specifically to HTX Minerals Corp.'s (HTX) Itchen Lake and Contwoyto Lake Property. HTX Minerals Corp. is committed to the protection and conservation of the natural environment and the safety and health of all employees and contractors from any potential harmful effects from operations and stored materials. The proposed work for the Itchen Lake and Contwoyto Lake project includes mapping, prospecting, geochemical sampling, geophysical surveys, drilling, fuel transport, fuel caches and establishing a seasonal camp.

The lands in the Itchen Lake project are both Kitikmeot Inuit Owned Lands (IOL) and Federal Crown land (Figure 1). The Contwoyto exploration area covers the KIA administered Article 41 lands that lie within the Northwest Territories. HTX holds Class I KIA land use permits for the Itchen Lake Property (claims on KIA owned lands) and the Contwoyto Property; requests have been submitted to upgrade these to Class III permits. Additional permit applications have been submitted to Aboriginal Affairs and Northern Development Canada (AANDC) and the Nunavut Water Board (NWB). Land use authorization for exploration activity on the Itch 1-3 claims (Northwest Territories) is not currently being applied for, as the 2013 program will focus on the portions of the Itchen Lake Property which lie solely within Nunavut. In the even that HTX would like to proceed with exploration on the Northwest Territories portions of the Itchen Lake Property, a land use permit application will be submitted to the Wek'èezhii Land and Water Board (WLWB). This Environmental Operations Plan will be filed with all the relevant regulatory bodies.

In 2013, HTX Minerals Corp. will be operating one camp site which will be located on the Itchen Lake Property. On the Itchen claims an~10-12 hole drill program within 8 drill sites is proposed with an additional possible 1-2 drill holes on the Contwoyto Lake Property (Figures 1 and 2). The proposed camp will be supported by the southernmost lake (Leanne Lake) on the Itch 19 claim (Figure 1 and 3). To accommodate 10-15 (maximum 20) people in camp, tents will be set up to allow for an office, a kitchen, a medical tent, a dry, a core shack, generator housing, four to five sleeper tents and 2 outhouses (or small pacto units).

Drill sites will be located throughout the Itchen Lake Property, with approximately 6 drill sites located on IOL surfaces, and 2 drill sites on Crown land, in geologically favorable locations (Figure 1). Drill sites on the Contwoyto Lake Property will be determined based on results from the initial exploration program. Equipment and fuel will be temporarily stored at each drill site as it is being actively drilled. Personnel and equipment will be transported to the camp from Yellowknife via tundra tire-equipped fixed wing aircraft (i.e. twin otter). The fixed wing will be able to land on an esker located near the camp within claim 19 (Figure 1). Helicopter transportation will be used to move personnel and equipment to and from camp while conducting exploration on the Itchen Lake and Contwoyto Lake Property.

**Table 1. HTX Minerals Corp. Proposed Camp location.**

Location	Latitude	Longitude
Camp	65°38'59" N	112°10'53" W

## 2. Environmental Protection Planning

The exploration program activities will be assessed for environmental impact risks and all measures will be taken to ensure the protection and preservation of the natural environment.

For the duration of the program, documentation and photography will be conducted as to comply with environmental due diligence. All field employees and contractors will be provided with environmental training, and become familiar with relevant regulations. The Program Supervisor will hold the primary responsibility for environment protection from impacts related to the program activities. The program budget includes the cost of activities including: training, monitoring, reclamation and site clearance surveys which will help to minimize environmental damage. Preference will be given to those contractors that exhibit high standards of environmental management and practice. In the event of a natural or exploration-related emergency, HTX Minerals Corp. has prepared a Spill Prevention and Response Plan which will be located on-site in numerous and highly visible areas.

When conducting all activities, the Terms and Conditions of each of the authorizations from the aforementioned regulatory bodies, will be strictly adhered to by HTX Minerals Corp. and all contractors.

In addition to the terms and conditions, there are a number of Acts, Regulations, Guidelines and Recommendations that HTX will also observe, these include, but are not limited to:

- *Fisheries Act*
- *Department of Fisheries and Ocean Operational Statements and Guidelines*
- *Caribou Protection Plan/Caribou Protection Measures*
- *Nunavut Waters and Nunavut Surface Rights Tribunal Act*
- *Territorial Lands Act*
- *Nunavut Land Claims Agreement*
- *Environmental Protection Act*
- *Canadian Environment Protection Act*
- *Species at Risk Act*
- *Territorial Wildlife Act*
- *Guide to Spill Contingency Planning and Reporting*
- *Public Health Act*

### **3. Stakeholders**

Stakeholders will be identified and communicated with for the duration of the program; they may be individuals or groups concerned or possibly affected by exploration activities. Relevant approvals from stakeholders and regulatory authorities will be obtained.

#### **Archaeology**

With Respect to culture and cultural heritage, archeological or paleontological sites or fossils encountered, the Department of Culture, Language, Elders and Youth (CLEY) will be contacted immediately. A report will be prepared documenting the discovery and sent to the Government of Nunavut (CLEY), the Inuit Heritage Trust and the Regional Inuit Association.

**The contact number for the Department of Culture, Language, Elders and Youth is:**

1-867-934-2046 or 1-867-975-5500 or 1-866-934-2035

### **4. Flora and Fauna**

The Itchen Lake Property is not located within any “Protected Areas” in Nunavut, as defined by Environment Canada, which includes the 5 National Wildlife Areas and 11 Migratory Bird Sanctuaries

(Figure 3). In addition, the Itchen Lake and Contwoyto Lake project is also not located in, nor does it contain, any Territorial areas of special interest including Territorial Parks, wildlife sanctuaries, caribou migration routes or calving grounds (Figure 3).

Unnecessary impacts and interference with the native flora will be avoided. Fauna sightings will be recorded on the wildlife sheets provided and reported to the appropriate agencies. **Approaching, disturbing and feeding wildlife will be strictly prohibited, investigated and disciplined**, as HTX Minerals Corp. respects the natural environment and adheres to the terms and conditions provided by regulatory authorities. Any individuals conducting business on behalf of HTX Minerals Corp. who do not respect the prohibition will be penalized and/or their contract terminated.

### **Disturbance**

Airborne support is required to carry out operations. Possible disturbances that may arise from the use of air transportation equipment are petroleum product spills, potential clearance of flora for a safe helicopter landing sites, and disturbance of fauna flying at low altitudes. When low altitude helicopter flights are necessary, all efforts to avoid wildlife, dwellings and nests will be strictly enforced. Pilots will be instructed not to land where wildlife is present unless it is in an emergency situation. If any emergency landing occurs in the presences of wildlife, it will be documented and submitted as part of the wildlife report and submitted to the regulatory authorities as part of the annual reports.

### **Wildlife Protection**

Any bears or nuisance wildlife will be reported to the Camp Manager and to the respective authorities immediately. See appendix 1 for a list of Wildlife Emergency Contacts. If any wildlife come in to the vicinity of operations HTX Minerals Corp. will follow protection measures and be certain to stop operations and not disturb the animals until they have moved out of the operations vicinity.

### **Human Safety**

**Registered firearms** will be located at camp and at the drill site to ensure safety of all persons on the Property. All persons carrying a firearm must have a valid Licence and receive the clearance of the project manager. **Any hunting while conducting business on behalf of HTX Minerals Corp. is strictly forbidden.** Following legislation, a secure lock and key firearms storage case, will be used and will be managed by the Project Manager. Any firearm discharges, for any reason, will be reported to the Project Manager.

## **5. Land Disturbance**

All necessary permits and permissions will be obtained before any land disturbance is conducted. Earthmoving, vegetation clearing, and any other land disturbances will kept to a minimum at best or avoided whenever possible.

- Earth may be moved to construct small pits or sumps or when taking soil or till samples, however natural depressions and areas free of vegetation will be used when possible. Any topsoil moved will be collected to be used in re-vegetation efforts. If the sump is excavated it will be barricaded until back-filled.
- As the Property lies above the tree line no trees will be removed to facilitate access. Clearing on steep slope, side hills and drainage banks will be avoided.

- When conducting traverses: foot accessible grid lines for geosciences will be kept to a minimal width, any temporary stakes used will be wooden and removed at the completion of the program, flagging tape and spray paint will be used sparingly.

## **6. Drilling Operations**

Exploration drilling service contracts will be awarded to companies that exhibit high standards of environmental practice and will adhere to the environmental protection plan; penalties will ensue for non-compliance. Any removal of top soils or organic layers will be stockpiled and used for back filling and/or re-vegetation. All waste will be disposed of according to regulation and land use permits

### **Drilling**

- Sites will include enough area for fire protection, but be as small as possible
- Bio-degradable drilling fluids will be used when possible and will be contained in sumps, to be positioned down slope of drill collars with run-off flow into the sump. All drill water will be treated in sumps which will be a minimum of 31 metres from a normal high-water mark
- A tarp (or something similar) will be placed around the hole to prevent drill cuttings from contact with the ground surface; any cuttings not used in analysis will be poured back down the hole or disposed of and the hole will be plugged, the casing cut to the ground and capped.
- Any artesian water flow will be reported to the AANDC or NWB Water Resource Officer and be controlled to prevent erosion; these holes will be permanently sealed.
- Temporary emergency shelters and supplies including a radio will be located at each drill site

## **7. Waste Management Planning**

A waste management Plan will be practiced, which will employ a system where materials will be used efficiently, therefore reducing the amount of waste generated, and then waste will be segregated in an attempt to enable the reuse of certain types of waste for different purposes, therefore reducing the amount of waste requiring costly handling, transport, treatment and disposal in Yellowknife.

Any materials brought to the site by employees or contractors will be either burned in a modified burn barrel or backhauled to Yellowknife for proper disposal. All disposals will comply with Federal and Territorial legislation and the terms and conditions provided in the water license and land use permits. All burning of materials will follow the Government of Nunavut Environmental Guideline for the Burning and Incineration of Solid Waste. Appendix 2 summarizes the burning Guidelines.

- Litter is strictly prohibited.
- Receptacles will be provided for garbage to be separated at camp and drill sites.
- Food waste will be backhauled to Yellowknife on a regular basis and when stored on site, it will be in sealed containers in a manner as to reduce any possibility of attracting any wildlife.
- Combustible wastes such as paper, cardboard, untreated wood and natural fibers will be burned in a modified burn barrel.
- Scrap metal and other noncombustible materials will be sealed and backhauled to Yellowknife for proper disposal.
- Grey water (kitchen and dry) will be collected into a sump, which will be filled and leveled as required.
- Black water (camp sewage) will either be collected in an outhouse sump (latrine pit) or in portable waste containers, which will be removed from site.

- Drilling fluids will be collected in sumps located no less than 31 metres from the normal high water mark of any body.

## 8. Hazardous Materials

All fuel and lubricant handlers will be expected to be familiar with MSDS, WHMIS, Spill and Emergency Responses and protocols for the transportation of dangerous goods. Materials Safety Data Sheets (MSDS) will be available for all hazardous materials on site. All storage areas for chemicals, hazardous materials and fuels will be in secondary containment and inspected daily. Hazardous wastes any include: used oil, oil filters, paint, chemicals, batteries, and used grease. With regards to hazardous materials, HTX Minerals Corp. will also ensure that:

- All personnel involved with handling hazardous materials will be familiar with the *Transportation of Dangerous Goods Act and Regulations* and trained appropriately.
- Disposal of hazardous materials will occur off-site at an approved licensed disposal facility, such as in Yellowknife.
- All hazardous materials will be stored in clean, dry areas at least 31 metres away from high water marks and have clear labeling.
- A waste manifest form will accompany all hazardous waste in transit and all parties will be properly registered as per the Environmental Protection Service (EPS) of the Department of Sustainable Development of the Government of Nunavut.
- All hazardous materials and their volumes will be tracked at the office on site.

Other Federal and Territorial legislation regarding storage, handling and transport of hazardous materials are included in:

- *National Fire Code of Canada*
- *Fire Prevention Act* (Territorial)
- *Federal Aboveground Storage Tank Technical Guidelines*
- *CCME Environmental Codes of Practice for Underground and Aboveground Storage Tank Systems*
- *Nunavut Guideline for the General Management of Hazardous Waste*
- *The Mine, Health and Safety Act and Regulations* (Nunavut)
- *The NWT and Nunavut Safety Act, the Occupational Health and Safety Regulations*
- *The Workplace Hazardous Materials Information System* (WHMIS)
- Governments of the Northwest Territories and Nunavut Worker's Compensation Board
- Environmental Guideline
- *The Federal Explosives Act and Regulations*
- *Canadian Environmental Protection Act*
- *Public Health Act*
- *Fisheries Act*
- *Nunavut Waters Act*
- *Nunavut Surface Rights Tribunal Act*
- *Environmental Protection Act*

Contacts for Hazardous Waste Issues – are included Appendix 3 of this plan.

## **9. Rehabilitation**

Upon completion of exploration activities on the Property, HTX Minerals Corp. will conduct an investigation to ensure all wastes have been removed, all drill holes have been capped and any excavations back-filled. HTX Minerals Corp. will promote the restoration of the land surface to its original form and encourage re-vegetation growth on areas that may have become disturbed by exploration activities by spreading stockpiled top soils and applying fertilizers where needed. Photographs will be taken before, during and after exploration activities.



**Appendix 1**  
**Wildlife Emergency Contacts**

## Appendix 1

### Wildlife Emergency Contact Information

<b>Name</b>	<b>Position</b>	<b>Phone</b>
Andrew Turner	Project Manager (APEX Geoscience Ltd.)	(780) 439-5380
Kitikmeot Inuit Association		(867) 983-2458
Dustin Fredland	Wildlife Manager (Kitikmeot)	(867) 982-7441
Charlene Beanish	Environmental Protection Officer (Kitikmeot)	867) 982-7483
Shane Sather	Acting Regional Wildlife Manager (Cambridge Bay)	(867) 983-4167
Robert Harmer	Acting Conservation Officer III (Cambridge Bay)	(867) 983-4164
Allen Niptanatiak	Acting Conservation Officer III (Kugluktuk)	(867) 982-7451
Monica Angohiatok	Conservation Officer II (Kugluktuk)	(867) 982-7450
Colin Adjun	Conservation Officer I (Kugluktuk)	(867) 982-7450
Gerry Atatahak	Conservation Officer (Kugluktuk)	(867) 982-7450
Jorgen Bolt	Wildlife Technician II (Kugluktuk)	(867) 982-7446
Drikus Gissing	Director Wildlife Management (Iqaluit)	(867) 975-7734

Wildlife contacts from Government of Nunavut Directory <http://www.gov.nu.ca/directory/env.pdf>

## **Appendix 2**

### **Environmental Guideline for the Burning and Incineration of Solid Waste**

# Environmental Guideline for the Burning and Incineration of Solid Waste



Department of Environment  
Government of Nunavut

## **GUIDELINE: BURNING AND INCINERATION OF SOLID WASTE**

Original: October 2010

Revised: January 2012

This Guideline has been prepared by the Department of Environment's Environmental Protection Division and approved by the Minister of Environment under the authority of Section 2.2 of the *Environmental Protection Act*.

This Guideline is not an official statement of the law and is provided for guidance only. Its intent is to increase the awareness and understanding of the risks, hazards and best management practices associated with the burning and incineration of solid waste. This Guideline does not replace the need for the owner or person in charge, management or control of a solid waste to comply with all applicable legislation and to consult with Nunavut's Department of Environment, other regulatory authorities and qualified persons with expertise in the management of solid waste.

Copies of this Guideline are available upon request from:

Department of Environment

Government of Nunavut

P.O. Box 1000, Station 1360, Iqaluit, NU, X0A 0H0

Electronic version of the Guideline is available at <http://env.gov.nu.ca/programareas/environmentprotection>

Cover Photos: Nunavut Department of Environment (left and bottom right), Aboriginal Affairs and Northern Development Canada (top right)

## Table of Contents

<b>Introduction</b>	1
1.1 Definitions	1
1.2 Roles and Responsibilities	4
1.2.1 Department of Environment	4
1.2.2 Generators of Solid Waste	4
1.2.3 Other Regulatory Agencies	4
<b>Waste Burning and Incineration</b>	7
2.1 The Combustion Process	7
2.2 Pollutants of Concern	8
2.3 Burning and Incineration Methods	9
2.3.1 Open Burning	9
2.3.2 Incineration	11
2.4 Environmental Standards	13
2.4.1 Air Emissions	13
2.4.2 Bottom Ash	14
<b>Best Management Practices</b>	15
3.1 Waste Management Planning	15
3.2 Wastes That Can be Burned or Incinerated	16
3.3 Keeping Waste Dry	16
3.4 Locating the Facility	17
3.5 Maximizing Combustion Efficiency	18
3.6 Ash Management	18
3.7 Monitoring and Record Keeping	19
3.8 Operator Training	20
<b>The Application of Open Burning and Incineration</b>	21
4.1 Open Burning	21
4.2 Incineration	23
<b>Conclusion</b>	26
<b>References</b>	27

## Appendices

- Appendix 1 Environmental Protection Act
- Appendix 2 Modified Burn Barrel Design and Specifications



## Introduction

People living and working in Nunavut often have limited options available for cost effective and environmentally sound management of household and other solid waste. The widespread presence of permafrost, lack of adequate cover material and remote locations make open burning and incineration a common and widespread practice to reduce the volume of solid waste and make it less of an attractant to wildlife. A wide variety of combustion methods are used ranging from open burning on the ground to high temperature dual-chamber commercial incinerators. Generally, high temperature incinerators are more expensive to purchase and operate and cause less pollution than do the less expensive and lower temperature methods. However, high temperature incinerators can safely dispose of a wider variety of waste than can the lower temperature open burning methods.

**The Guideline for the Burning and Incineration of Solid Waste (the Guideline) is not intended to promote or endorse the burning and incineration of solid waste.** It is intended to be a resource for traditional, field and commercial camp operators, communities and others considering burning and incineration as an element of their solid waste management program. It examines waste burning and incineration methods that are used in Nunavut, their hazards and risks and outlines best management practices that can reduce impacts on the environment, reduce human-wildlife interactions and ensure worker and public health and safety. This Guideline does not address incineration of biomedical waste, hazardous waste and sewage sludge. The management of these wastes requires specific equipment, operational controls and training that are beyond the scope of the current document.

The *Environmental Protection Act* enables the Government of Nunavut to implement measures to preserve, protect and enhance the quality of the environment. Section 2.2 of the *Act* provides the Minister with authority to develop, coordinate, and administer the Guideline.

The Guideline is not an official statement of the law. For further information and guidance, the owner or person in charge, management or control of a solid waste is encouraged to review all applicable legislation and consult the Department of Environment, other regulatory agencies or qualified persons with expertise in the management of solid waste.

### 1.1 Definitions

<i>Biomedical Waste</i>	Any solid or liquid waste which may present a threat of infection to humans including non-liquid tissue, body parts, blood or blood products and body fluids, laboratory and veterinary waste which contains human disease-causing agents, and discarded sharps (i.e. syringes, needles, scalpel blades).
<i>Bottom Ash</i>	The coarse non-combustible and unburned material which remains at the burn site after burning is complete. This includes materials remaining in the burn chamber, exhaust piping and pollution control devices where such devices are used.
<i>Burn Box</i>	A large metal box used to burn solid waste. Combustion air is usually supplied passively through vents or holes cut above the bottom of the box. An exhaust pipe or stack may or may not be attached.



<i>Commercial Camp</i>	A temporary, seasonal or multi-year facility with a capacity greater than 15 people and which has been established for research, commercial or industrial purposes. A commercial camp does not include a traditional camp or field camp.
<i>Commissioner's Land</i>	Lands that have been transferred by Order-in-Council to the Government of Nunavut. This includes roadways and land subject to block land transfers. Most Commissioner's Land is located within municipalities.
<i>Contaminant</i>	Any noise, heat, vibration or substance and includes such other substance as the Minister may prescribe that, where discharged into the environment, (a) endangers the health, safety or welfare of persons, (b) interferes or is likely to interfere with the normal enjoyment of life or property, (c) endangers the health of animal life, or (d) causes or is likely to cause damage to plant life or to property.
<i>Determined Effort</i>	The ongoing review of opportunities for reductions and the implementation of changes or emission control upgrades that are technically and economically feasible and which result in on-going reductions in emissions. Determined efforts include the development and implementation of waste management planning which is focussed on pollution prevention.
<i>De Novo Synthesis</i>	The creation of complex molecules from simple molecules.
<i>Environment</i>	The components of the Earth and includes (a) air, land and water, (b) all layers of the atmosphere, (c) all organic and inorganic matter and living organisms, and (d) the interacting natural systems that include components referred to in paragraphs (a) to (c) above.
<i>Field Camp</i>	A temporary, seasonal or multi-year facility consisting of tents or other similar temporary structures with a capacity of 15 people or less and which has been established for research, commercial or industrial purposes. A field camp does not include a traditional camp or commercial camp.
<i>Fly Ash</i>	Unburned material that is emitted into the air in the form of smoke or fine particulate matter during the burning process.
<i>Hazardous Waste</i>	A contaminant that is a dangerous good and is no longer wanted or is unusable for its original intended purpose and is intended for storage, recycling, treatment or disposal.
<i>Incineration</i>	A treatment technology involving the destruction of waste by controlled burning at high temperatures.

<i>Incinerator</i>	A device or structure intended primarily to incinerate waste for the purpose of reducing its volume, destroying a hazardous substance in the waste or destroying an infectious substance in the waste. An incinerator has means to control the burning and ventilation processes.
<i>Inspector</i>	A person appointed under subsection 3(2) of the <i>Environmental Protection Act</i> and includes the Chief Environmental Protection Officer.
<i>Modified Burn Barrel</i>	A metal drum used to burn waste that has been affixed with devices or features which provide limited increased heat generation, heat retention and holding time.
<i>Open Burning</i>	Burning of waste with limited or no control of the burn process. For clarity, open burning includes burning on the open ground or using a burn box or unmodified or modified burn barrel.
<i>Qualified Person</i>	A person who has an appropriate level of knowledge and experience in all relevant aspects of waste management.
<i>Responsible Party</i>	The owner or person in charge, management or control of the waste.
<i>Smoke</i>	The gases, particulate matter and all other products of combustion emitted into the atmosphere when a substance or material is burned including dust, sparks, ash, soot, cinders and fumes.
<i>Solid Waste</i>	Unwanted solid materials discarded from a household (i.e. single or multiple residential dwellings, other similar permanent or temporary dwellings), institutional (i.e. schools, government facilities, hospitals and health centres), commercial (i.e. stores, restaurants) or industrial (i.e. mineral, oil and gas exploration and development) facility. For clarity, solid waste does not include biomedical waste, hazardous waste or sewage sludge.
<i>Traditional Camp</i>	A temporary or seasonal camp used primarily for camping, hunting, fishing or other traditional or cultural activities. A traditional camp does not include a field camp or commercial camp.
<i>Unmodified Burn Barrel</i>	A metal drum used to burn waste that has not been affixed with devices or features which provide for enhanced heat generation, heat retention and holding time.
<i>Untreated Wood</i>	Wood that has not been chemically impregnated, painted or similarly modified to improve resistance to insects or weathering.
<i>Waste Audit</i>	An inventory or study of the amount and type of waste that is produced at a location.

## **1.2 Roles and Responsibilities**

### **1.2.1 Department of Environment**

The Environmental Protection Division is the key environmental agency responsible for ensuring the proper management and disposal of solid waste and other contaminants on Commissioner's Land. Authority is derived from the *Environmental Protection Act*, which prohibits the discharge of contaminants to the environment and enables the Minister to undertake actions to ensure appropriate management measures are in place. Although programs and services are applied primarily to activities taking place on Commissioner's and municipal lands and to Government of Nunavut undertakings, the *Environmental Protection Act* may be applied to the whole of the territory where other controlling legislation, standards and guidelines do not exist. A complete listing of relevant legislation and guidelines can be obtained by contacting the Department of Environment or by visiting the web site at:

<http://env.gov.nu.ca/programareas/environmentprotection>.

The Wildlife Management Division is responsible for managing wildlife in Nunavut. Section 90 of the *Wildlife Act* prohibits the intentional feeding of wildlife and the placement of any food or garbage where there is a reasonable likelihood that it would attract wildlife. Once wildlife has been 'conditioned' to obtaining food associated with human activities, it can become dangerous and often will have to be destroyed. Further information on ways to reduce contact between wildlife and humans can be obtained by contacting the local Conservation Officer or by visiting the web site at:

<http://env.gov.nu.ca/programareas/wildlife>.

The Department of Environment will provide advice and guidance on the burning and incineration of solid waste. However, it remains the responsibility of the owner or person in charge, management or control of the solid waste to ensure continued compliance with all applicable statutes, regulations, standards, guidelines and local by-laws.

### **1.2.2 Generators of Solid Waste**

The generator, or responsible party, is the owner or person in charge, management or control of the solid waste at the time it is produced or of the facility that produces the waste. The responsible party must ensure the waste is properly and safely managed from the time it is generated to its final disposal. This is referred to as managing the waste from cradle-to-grave.

Contractors may manage solid waste on behalf of the responsible party. However, the responsible party remains liable for ensuring the method of management complies with all applicable statutes, regulations, standards, guidelines and local by-laws. If the contractor does not comply with the requirements of the *Environmental Protection Act* or *Wildlife Act* and is charged with a violation while managing the waste, the responsible party may also be charged.

### **1.2.3 Other Regulatory Agencies**

Other regulatory agencies may have to be consulted regarding the burning and incineration of solid waste as there may be other environmental or public and worker health and safety issues to consider.

### **Workers' Safety and Compensation Commission**

The Workers' Safety and Compensation Commission is responsible for promoting and regulating worker and workplace health and safety in Nunavut. The Commission derives its authority from the *Workers' Compensation Act* and *Safety Act* which require an employer to maintain a safe workplace and ensure the safety and well being of workers.

### **Department of Community and Government Services**

The Department of Community and Government Services is responsible under the *Commissioners' Lands Act* for the issuance of land leases, reserves, licenses and permits on Commissioner's Lands. The Department, in cooperation with communities, is also responsible for the planning and funding of municipal solid waste and sewage disposal facilities in most Nunavut communities.

The Office of the Fire Marshal is responsible for delivering fire and life safety programs including reviewing plans to ensure incinerators and other heating devices comply with all legislation, codes and standards. The Office of the Fire Marshal derives its authority from the *Fire Prevention Act*, *National Fire Code* and *National Building Code*.

### **Department of Health and Social Services**

Activities related to the burning and incineration of solid waste may have an impact on public health. The Office of the Chief Medical Officer of Health and Regional Environmental Health Officers should be consulted regarding legislated requirements under the *Public Health Act*.

### **Environment Canada**

Environment Canada is responsible for administering the *Canadian Environmental Protection Act* (CEPA) and Canada's Toxic Substances Management Policy. Many pollutants that are released into the atmosphere from the incomplete combustion of unsegregated, or mixed, solid waste are listed as Toxic Substances in Schedule I of CEPA, or are targeted for phase-out through the Toxic Substances Management Policy. Environment Canada is also responsible for administering the pollution prevention provisions of the federal *Fisheries Act* and for regulating the international and interprovincial movement of solid and liquid hazardous waste under the *Interprovincial Movement of Hazardous Waste Regulations* and *Export and Import of Hazardous Waste and Hazardous Recyclable Material Regulations*.

The Air Quality Research Division of Environment Canada is responsible for conducting research into atmospheric releases of chemicals in commercial use in Canada, measuring exhaust emissions from stationary and mobile sources and undertaking ambient air quality monitoring in partnership with provinces and territories.

### **Aboriginal Affairs and Northern Development Canada**

Aboriginal Affairs and Northern Development Canada is responsible under the *Territorial Lands Act* and *Nunavut Waters and Nunavut Surface Rights Tribunal Act* for the management of federal lands and waters, including the impact solid waste may have on the quality of these lands and waters.

### **Local Municipal Governments**

The role of municipal governments is important in the proper local management of solid waste. Under the Nunavut Land Claims Agreement, municipalities are entitled to control their own municipal disposal sites. Local environmental and safety standards are determined, in part, by how the land is designated under municipal government development plans (i.e. land use zoning). Solid waste may be deposited into municipal landfill sites only with the consent of the local government. The local fire department may also be called upon if a fire or other public safety issue is identified.

### **Co-management Boards and Agencies**

Co-management boards and agencies established under the Nunavut Land Claims Agreement have broad authority for land use planning, environmental impact assessment and the administration of land and water. Activities involving the burning and incineration of solid waste may be controlled through the setting of terms and conditions in plans, permits and licenses issued by the Nunavut Water Board and other co-management boards and agencies.

## Waste Burning and Incineration

### 2.1 The Combustion Process

The combustion, or burning, of solid waste proceeds through a series of stages. Water is first driven from the unburned waste by heat produced from material burning nearby or from an auxiliary burner. As the waste heats up, carbon and other substances are released and converted into burnable gases. This is referred to as gasification. These gases are then able to mix with oxygen. If the temperature inside the burn chamber is high enough and maintained for a long enough period of time, the hot gases are completely converted into water vapour and carbon dioxide, which is then released into the air. If the temperature inside the burn chamber is not high enough and the burn time is too short, complete conversion of the burnable gases does not occur and visible smoke is released into the air. Another result of burning at low temperatures is the creation of pollutants that were not originally present in the waste. This process is known as *de novo* synthesis. Dioxins, furans and other complex chemical pollutants can be formed through this process.

Ash produced from combustion takes the form of either fly ash or bottom ash. Fly ash is the fine particles carried away in the form of smoke while bottom ash is the coarse non-combustible and unburned material that remains after the burn is complete. The type and amount of pollutants in the fly and bottom ash depend upon what waste is burned and completeness of the combustion process.

The completeness of combustion is determined by all of the following factors:

#### Temperature

The temperature generated is a function of the heating value of the waste and auxiliary fuel, incinerator or burn unit design, air supply and combustion control. Complete combustion requires high temperatures. Generally, temperatures that exceed 650°C with a holding time of 1-2 seconds will cause complete combustion of most food and other common household waste. Segregation of waste is required when using methods that don't routinely achieve these temperatures. Dual chamber incinerators, which are designed to burn complex mixtures of waste, hazardous waste and biomedical waste, must provide a temperature higher than 1000°C and a holding time of at least one second to ensure complete combustion and minimize dioxin and furan emissions. When these high temperatures and holding times are achieved, waste will be completely burned and ash, smoke and pollutant concentrations will be minimized.

Because exhaust gas temperatures vary from ambient to greater than 1000°C each time a batch waste incinerator is used, optional air pollution control systems with evaporative cooling towers and scrubbers are seldom recommended. However, it may be necessary to employ these systems with large continuous feed incinerators if additional cleaning of exhaust gas is required by regulatory authorities.

#### Holding Time

Complete combustion takes time. Holding time, otherwise known as retention or residence time, is the length of time available to ensure the complete mixing of air and fuel, and thus the complete burning of waste. Low temperatures, low heating values of the waste and reduced turbulence require that the holding time be increased to complete the combustion process.

## **Turbulence**

The turbulent mixing of burnable gases with sufficient oxygen is needed to promote good contact between the burning waste and incoming air. This will help in achieving the high temperatures at which waste can be completely burned. The amount of mixing is influenced by the shape and size of the burn chamber and how the air is injected. Passive under-fire ventilation achieved during open burning does not result in sufficient turbulence for the burning of a wide variety of waste. Also, it is important not to overfill the burn chamber as airflow may be blocked and the amount of turbulence further reduced. The more advanced incineration designs provide effective turbulence through the forced introduction of air directly into hot zones.

## **Composition of the Waste**

The heating value, wetness and chemical properties of the waste affect the combustion process and the pollutants that are contained in the resulting smoke and ash. The higher the burn temperature, holding time and turbulence that are achieved, the less effect the composition of the waste has on completeness of the burn.

## **2.2 Pollutants of Concern**

Extreme care must be exercised when burning or incinerating solid waste. Open burning and the improper incineration of solid waste can result in environmental, health and safety hazards from the pollutants found in smoke and exhaust gases and in the bottom ash. These pollutants may either be found in the original waste itself, or may be created through *de novo* synthesis if sufficient temperature, holding time and turbulence is not achieved in the burn chamber.

Many different types of pollutants can be released during burning and incineration. A few of these pollutants include acid gases, trace metals, fine particulates, volatile organic compounds and semi-volatile organic compounds. Acid gases such as hydrogen chloride and sulphur oxides result from burning waste that has high levels of chlorine and sulphur (i.e. plastics). Mercury, lead and cadmium are examples of trace metals found in both fly and bottom ash when batteries, used lubricating oil and other metal-containing wastes are burned. Fine particulates are the very small particles found in smoke created by incomplete combustion and can cause respiratory irritation in humans and wildlife.

Dioxins and furans are pollutants that have drawn much attention in recent years because they have been linked to certain types of cancers, liver problems, impairment of the immune, endocrine and reproductive systems and effects on the fetal nervous system. These pollutants persist in the environment for long periods of time, bioaccumulate in plants and animals, result predominantly from human activity and have been identified for 'virtual elimination' in Canada under the federal Toxic Substances Management Policy. The incineration of solid waste accounts for almost 25% of the dioxin and furan emissions in Canada each year. They are formed in trace amounts by *de novo* synthesis during the low temperature burning of waste containing organic compounds and chlorine (i.e. chlorinated plastic, PVC pipe, marine driftwood).

The most effective way to reduce or minimize the release of pollutants is to segregate the waste before burning and achieve sufficiently high temperature, holding time and turbulence in the burn chamber. Open burning produces more smoke and pollutants, including dioxins and furans, than does an incinerator capable of achieving complete combustion.



## 2.3 Burning and Incineration Methods

The burning and incineration method used is a major factor in determining what type of waste can be safely and effectively disposed of. The methods commonly used in Nunavut include open burning on the ground, unmodified burn barrels and various mechanical incineration systems. Other useful methods include the use of burn boxes and modified burn barrels. Each method is discussed separately in the following sections.

### 2.3.1 Open Burning

Open burning means the burning of waste where limited or no control of the combustion process can be exercised by the operator. This method includes burning solid waste directly on the open ground or in burn boxes or burn barrels and often does not achieve the temperatures or holding time needed for complete combustion of the waste to occur. This results in the formation of potentially hazardous pollutants and ash, which are likely to impact nearby land and water. Food waste that is not completely burned through open burning can also be a powerful attractant for animals.

The various open burning methods can also present a risk of uncontrolled vegetation and tundra fires through the release of hot sparks or embers. The level of fire risk depends upon the type of open burning used, its location, the skill of the operator and the environmental conditions that exist at the time (i.e. dryness of the surrounding vegetation, wind).

The open burning of solid waste remains a common practice in Nunavut. It is the policy of the Department of Environment to eliminate or minimize open burning of mixed solid waste to the extent practicable and to encourage more acceptable methods of disposal and incineration.

#### Open Burning on the Ground

Open burning on the ground involves burning solid waste that has been piled directly on the surface of the ground or placed in a small open pit. Many large and small communities and camp operators in Nunavut continue to practice open burning on the ground as a means of reducing the volume of solid waste that must ultimately be disposed of. In general, open burning on the ground results in the incomplete combustion of waste and the release of various harmful pollutants to the air, can cause vegetation or tundra fires through the uncontrolled release of hot sparks and embers, and is actively discouraged by the Nunavut Department of Environment as a method for disposing of unsegregated or mixed solid waste.



---

**Figure 1 – Open Burning on the Ground**  
Photo courtesy of Aboriginal Affairs and Northern Development Canada



## Burn Boxes

There are two basic types of burn boxes. The *enclosed burn box* is constructed using heavy sheets of steel or other metal while the *open burn box* is constructed using expanded metal grating. The latter type is commonly referred to as a *burn cage*. These devices are not commercially-available in Nunavut, but can be constructed using locally available materials. For example, the enclosed metal burn box shown in Figure 2 is made from a dump truck bed and steel plating.



**Figure 2 – Enclosed Metal Burn Box**  
Photo courtesy of Alaska Department of Environmental Conservation

Burn boxes are considered a modification of open burning. Combustion air is provided passively using a natural draft making electricity unnecessary. Burn boxes are single chambered units. Waste is raised off the bottom of the box by placing it on grates inside the unit. Unburned bottom ash falls through the grate during burning making removal easier once a sufficient amount has accumulated. Combustion air in enclosed burn boxes is typically provided by cutting holes near the bottom of the box allowing for better mixing with the burning waste.

Open burn boxes, or burn cages, are an improvement over enclosed burn boxes as the waste is exposed to natural drafts through the metal grating on all surfaces including the bottom. This enables air to better mix with burning waste and promotes more efficient combustion throughout the burning period. Both types of burn boxes are constructed with hinged tops to enable easier loading and cleaning.

Unlike open burning on the ground, burn boxes help to contain the burning waste within a specific location reducing the risk of fire spreading to other disposal areas or surrounding tundra, while still enabling moderate amounts of solid waste to be burned.

## Burn Barrels

There are two basic types of burn barrels – the unmodified burn barrel and modified burn barrel.



**Figure 3 – Open Metal Burn Box**  
Photo courtesy of Alaska Department of Environmental Conservation

The *unmodified burn barrel* is normally a 45 gallon, or 205 litre, metal fuel or oil drum with the top removed. These devices typically operate at a low temperature resulting in incomplete combustion of the waste and production of large volumes of smoke and fly ash.

A *modified burn barrel* is a 45 gallon metal fuel or oil drum that has been affixed with devices or features which result in higher burn temperatures, better mixing of the air and a longer holding time. These modifications include a 'metal mesh basket' insert or grate designed to suspend the burning waste. Evenly spaced vents or holes cut above the bottom of the barrel supply combustion air. These features provide for enhanced passive under-fire ventilation and promote better contact between the waste being burned and incoming air. The basket insert is topped with a hinged lid and a chimney port for attachment of an exhaust pipe or stack. The lid helps to increase heat retention and holding time inside the barrel while also allowing for easier loading and mixing of the waste. The removable mesh basket enables access to the unburned bottom ash.

Modified burn barrels can be built using commonly available materials. They can either be pre-built locally or transported to the site for assembly. Detailed construction plans are provided in Appendix 2.

Although modified burn barrels are designed to create an advantage over open burning on the ground, burn boxes and unmodified burn barrels through achieving higher burn temperatures and increased turbulence and holding time, incomplete combustion of waste and the release of pollutants to the atmosphere are still likely. In fact, emissions testing by Environment Canada on a modified burn barrel in April 2011 suggest that these devices do not provide any improvement over open burning on the ground in terms of emissions quality, particularly if wet food waste is added to the waste mixture. Other common problems include easily overfilling the unit and loading waste that should not be burned (refer to section 3.2). Wet or frozen masses of waste are particularly difficult to burn and the resulting partly burned food waste may still attract animals. The proper operation of modified burn barrels is critical to achieving the most efficient burn possible. Basic operating instructions are provided in section 4.1.



**Figure 4 – Modified Burn Barrel**

Burn barrels are capable of burning only small volumes of solid waste. Like burn boxes, they reduce the risk of fire spreading to vegetation and tundra by containing the burning waste to a specific location.

### **2.3.2 Incineration**

Solid waste incinerators are engineered systems that are capable of routinely achieving burn temperatures in excess of 1000°C and a holding time of at least one second. Properly designed and operated incinerators are able to effectively and safely destroy a wide range of waste. Only incinerators designed for burning mixed municipal solid waste are discussed in the guideline. The incineration of

hazardous and biomedical waste and sewage sludge requires specific equipment, operational controls and training that are beyond the scope of the current document.

There are four basic types of incinerators. They vary based upon the number of burn chambers they have, the amount of air provided to each chamber and how waste is fed into the primary burn chamber.

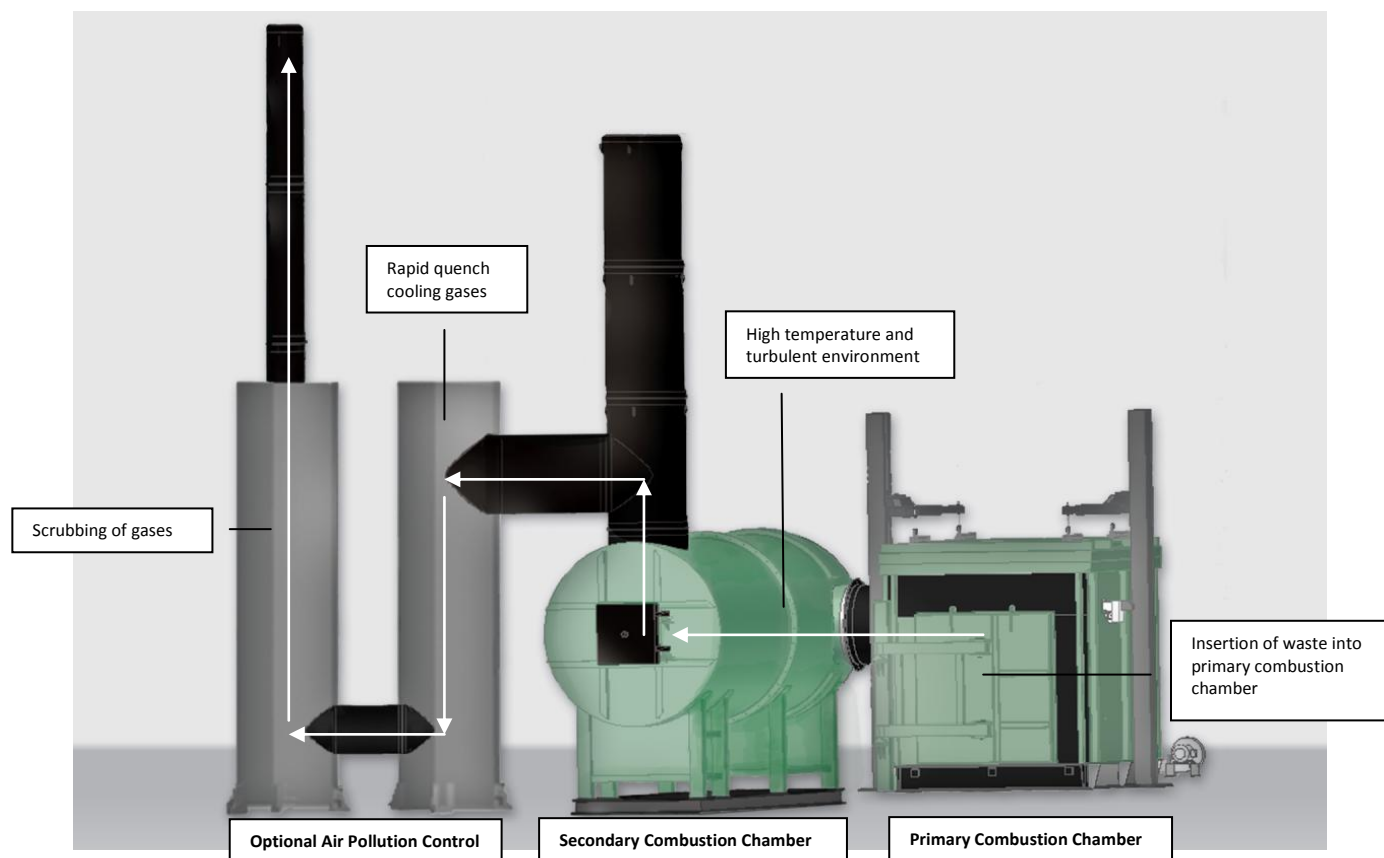
<i>Dual-Chamber Starved Air System</i>	The primary burn chamber receives less air than is needed to achieve full combustion. Gases from this incomplete combustion then pass into a second burn chamber where sufficient air is injected and complete combustion is achieved.
<i>Single Chamber Excess Air System</i>	More than a sufficient amount of air (as much as 50% more than the amount of air needed) is injected into the single burn chamber to achieve complete combustion of the waste.
<i>Continuous Feed Incinerator</i>	An incineration process that is in a continuous burn cycle. A continuous feed incinerator operates without interruption throughout the operating hours of the facility by having waste continually added to the primary burn chamber.
<i>Batch Feed Incinerator</i>	An incineration process that is not in a continuous or mass burning cycle. A batch feed incinerator is charged with a discrete quantity or single load of waste at the beginning of the burn cycle.

Batch feed dual-chamber controlled air incinerators currently operate at several remote industrial locations in northern Canada and Alaska. Although they are generally considered to have the highest qualities of all the incinerators and open burning methods mentioned, they must be designed for the type and quantity of waste to be burned. Too little heat and holding time will not allow waste to burn properly; too much heat will damage the incinerator.

Figure 5 illustrates the design of a typical batch feed dual-chamber controlled air incinerator. The main features of this type of incinerator are:

- Batch operation allows greater control of temperature and air throughout the burn process.
- Air turbulence can be reduced in the primary chamber so fewer particulates are released into the air from the stack.
- Although a wide range of wastes can be destroyed, waste may have to be segregated and remixed in order to achieve a uniform heating value close to the design point of the incinerator.
- Externally supplied fuel and electricity are needed for the burners and forced air ventilation.
- A properly operating dual-chamber controlled air system will reduce problems with animal attraction as the production of bottom and fly ash and smoke is minimized.

Section 2.3.2 is intended to provide the reader with a brief introduction to incinerators. It is not intended to provide information suitable for the design, selection or operation of an incineration system. Any person considering the purchase of an incineration system should first consult the system's manufacturer or other qualified persons with expertise in the incineration of solid waste.



**Figure 5 – Typical Batch Feed Dual-Chamber Controlled Air Incinerator with Optional Air Pollution Controls**  
 Illustration courtesy of Eco Waste Solutions

## 2.4 Environmental Standards

### 2.4.1 Air Emissions

Air emission standards establish limits on the amount of contaminants that can be released into the atmosphere. These standards are expressed as a concentration in the exhaust gases leaving the stack and are capable of being achieved using generally available incineration technology and waste diversion practices. The following emission standards<sup>1</sup> apply to existing, new or expanding solid waste incinerators operating in Nunavut and have been adopted from the Canadian Council of Ministers of the Environment (CCME) Canada-Wide Standards for Dioxins and Furans and Mercury Emissions, respectively. Similar standards for the open burning of solid waste have not been established.

<sup>1</sup> Stack concentrations are always corrected to 11% oxygen content for reporting purposes.

**Table 1. Air Emission Standards for Solid Waste Incinerators**

Parameter	Numeric Standard	Explanation
Dioxins and Furans	80 pg I-TEQ/cubic metre	Unit of measure is picograms of International Toxicity Equivalents per cubic metre of air
Mercury	20 µg/Rcubic metre	Unit of measure is micrograms per Reference cubic metre (the volume of gas adjusted to 25°C and 101.3 kilopascals)

Opacity is the degree to which the exhaust gases reduce the transmission of light and obscure the view of any object in the background. It is expressed as a percentage representing the extent to which an object viewed through the gases is obscured. Although not an emission standard, opacity provides an indication of the general performance of the incinerator during normal operation<sup>2</sup>. Opacity in the incinerator stack should not exceed 5%. While it is not anticipated that opacity levels would exceed 1% to 2% under normal operation, values greater than 5% indicate the incinerator is not performing properly and additional performance evaluation and adjustment is required.

**Figure 6 - Examples of Smoke Opacity Ratings**

The opacity ratings are estimates and are provided for illustrative purposes only

Centre and right photos courtesy of GNWT Department of Environment and Natural Resources

### 2.4.2 Bottom Ash

The *Environmental Guideline for Industrial Waste Discharges into Municipal Solid Waste and Sewage Treatment Facilities* establishes criteria for determining whether process residuals<sup>3</sup> are suitable for disposal in landfill sites in Nunavut. For the purpose of this Guideline, process residuals include bottom ash from industrial and commercial incinerators. The Toxicity Characteristic Leaching Procedure Test method 1311 (US EPA) is the preferred method to analyze the residuals as this test is designed to simulate the processes a material would be subjected to if placed in a landfill.

Refer to the *Environmental Guideline for Industrial Waste Discharges into Municipal Solid Waste and Sewage Treatment Facilities* for additional information on the management of process residuals.

<sup>2</sup> The time during which optimum designed temperature is maintained in the burn chamber, and excludes 'startup' and 'cool down' operations.

<sup>3</sup> Process residuals are the solid, semi-solid or sludge waste resulting from industrial operations.



## Best Management Practices

Best management practices are methods and techniques that have been shown to be effective in preventing or reducing pollution. They include policies, prohibitions of practices, maintenance and monitoring procedures and other practices adopted by the responsible party. Implementing best management practices together with using best available technology is an effective means of reducing costs, reducing pollution and reducing a parties' legal liabilities.

### 3.1 Waste Management Planning

The generator of a waste is responsible for its safe management from cradle-to-grave. Using raw materials efficiently and reducing the amount of waste generated is the most important step in waste management planning. For example, through improved waste management planning, it may be possible to reduce or eliminate the need to burn or incinerate waste altogether. Undertaking a waste audit will help to identify the type and amount of waste being generated, the costs of current management options and examine opportunities for better managing the waste. This information will also enable the generator to implement a waste management regime that is tailored to its own unique needs, location and circumstances.

Even with improved waste reduction measures in place there will be waste generated. Waste by its nature is usually a mixture of different unwanted materials. The segregation and diversion of different types of waste is an effective way to reduce the amount of waste requiring costly handling, storage, treatment and disposal. Segregation also enables the reuse of certain types of waste for a different purpose. Reuse activities may be undertaken either on-site or off-site.

Treatment and disposal is the last step in effective waste management and should be undertaken only after all other practical reduction and reuse options have been examined. A wide variety of treatment and disposal options exist and each must be examined before deciding on a final method, regardless of whether waste is to be treated and disposed of on-site or off-site. If burning and incineration is the method of choice, equipment must be designed and sized accordingly to accommodate the type and quantity of waste being produced. As described in the following section, open burning is capable of safely destroying a limited number of types of waste. While incinerators are capable of safely destroying a wider range of waste, many types of waste must still be diverted. Because of this, on-site segregation remains a critical component of any waste management plan.

Overall, the following principles should be used to guide responsible solid waste management planning:

- Know your waste by conducting a waste audit.
- Reduce the amount of solid waste produced by implementing strategic purchasing policies that focus on the substitution or reduction of purchased products as well as product design, composition and durability.
- Reuse waste where different purposes can be identified.
- Segregate and divert mixed waste streams enabling waste to be reused or recycled, thereby reducing the amount of waste to be disposed of.
- All practical disposal methods should be examined. Burning and incineration of waste should be considered only where other practical methods do not exist.

- If burning and incineration is used, the equipment chosen should be designed and sized to accommodate the waste produced, minimize fire hazard and result in the complete combustion of the waste.

### **3.2 Wastes That Can be Burned or Incinerated**

Complete combustion converts waste into inert bottom ash with minimal creation of smoke, fly ash and hazardous gases. Several factors influence this process including the heating value, wetness and chemical composition of the waste itself, operating conditions in the burn chamber (i.e. temperature, holding time and turbulence) and operator skill.

The method used is important in determining what can safely be burned. Certain wastes can only be incinerated using equipment that has been specifically designed and equipped with sufficient air pollution controls and that achieve specific air emission standards. For example, waste containing chlorinated compounds (i.e. chlorinated solvents and plastics, PVC piping, wood treated with pentachlorophenol or PCB-amended paint, marine driftwood) must be separated from other waste as their burning will result in the *de novo* creation and emission of various dioxin and furan compounds. Waste containing mercury (i.e. batteries, thermostats and fluorescent light bulbs) and other heavy metals (i.e. lead acid batteries, wood treated with lead paint) should not be burned as the mercury and heavy metals will not be destroyed. Other waste that should not be burned unless using specially designed incinerators include used lubricating oil, hydrocarbon contaminated soil, biomedical waste, sewage sludge or any other waste specifically prohibited by the Department of Environment.

Table 2 provides a listing of common wastes that can be burned and those that require special consideration and treatment. Note that open burning and incineration are identified as separate columns in the table and that different restrictions apply depending upon which method is used. In general, more restrictions apply to the various methods of open burning because of the incomplete combustion achieved. Fewer restrictions apply to incineration because of the operator's ability to control the combustion process.

Non-combustible materials such as metal and glass do not burn and will rob heat away from waste that can be destroyed by burning. Combustible waste should always be separated from non-combustible waste before being loaded into the burn chamber.

### **3.3 Keeping Waste Dry**

Typical mixed garbage has a moisture content of less than 20% while the moisture content of food wastes can range up to 80%. Anything that can be done to reduce the moisture of waste burned will decrease the amount of smoke produced and increase the completeness of combustion. Waste should be covered or stored inside sheds or other secure buildings to keep rain and snow out of the waste. This will also lessen the opportunity for wildlife to access the waste. If wet waste must be burned, the wet waste should be mixed or layered with dry waste to reduce the overall moisture content of the waste burned. Mixing or layering waste in this manner is particularly important when loading wet solid waste into a burn box or modified burn barrel.

**Table 2. Waste That Can be Burned or Incinerated**

Waste Type	Method	
	Open Burning <sup>4</sup>	Dual-Chamber Incinerator
Paper products	✓	✓
Paperboard packing including boxboard and cardboard	✓	✓
Untreated wood including lumber and plywood	✓	✓
Food waste		✓
Food packaging		✓
Natural fiber textiles	✓	✓
Plastic and Styrofoam except plastic containing chlorine <sup>5</sup>		✓
Painted wood except wood painted with lead or PCB-amended paint		✓
Wood treated with creosote or tar oil		✓
Hydrocarbon spill absorbents		✓
Animal carcasses except those affected by disease-causing agents		✓

**The following waste requires special consideration. It is not to be burned or incinerated unless the equipment used has sufficient air pollution controls, meets specific air emission standards and has been specifically designed to safely incinerate the waste product.**

Hydrocarbon contaminated soil  
 Radioactive waste including smoke detectors  
 Organic compounds containing chlorine including plastics, solvents, PVC piping and marine driftwood  
 Pesticides  
 Items containing mercury, lead or other heavy metals including paint, computer equipment and fluorescent bulbs  
 Batteries  
 Explosives  
 Pressurized cans, cylinders or other containers that may explode when heated  
 Synthetic fiber textiles  
 Biomedical waste and animal carcasses affected by disease-causing agents  
 Wood treated with pentachlorophenol, inorganic preservatives, lead paint or PCB-amended paint  
 Sewage sludge  
 Rubber tires  
 Used lubricating oil  
 Waste fuel except limited quantities used solely as a starting fuel  
 Construction and demolition waste including roofing materials, electrical wire and insulation

### 3.4 Locating the Facility

Distance from sensitive areas (i.e. camp, work site, drinking water supply) and prevailing wind direction are important factors to consider when locating any facility that burns waste. The facility should be kept

<sup>4</sup> Includes open burning on the ground and the use of burn boxes, unmodified burn barrels and modified burn barrels.

<sup>5</sup> Chlorinated plastic materials are identified by the number "3" associated with the mobius loop symbol.





at least 100 metres from any surface water body. Although the objective is to minimize pollutants being released to the air, the site should be selected so that any resulting emissions are adequately dispersed. This includes locating the structure or facility away from areas or features that may trap smoke close to the ground (i.e. located in a valley). Avoid burning waste if people will be living or working within the plume of smoke. The facility should be located on stable and level ground. A gravel, rocky outcrop or other area free of combustible materials and vegetation should be chosen to avoid accidentally starting a vegetation or tundra fire.

### **3.5 Maximizing Combustion Efficiency**

More smoke and other pollutants are released into the air during the 'start-up' and 'cool down' phases of the burn cycle than during the 'full burn phase' when high temperatures are maintained. Low temperature smoldering fires should be avoided. Burn only dry feedstock and periodically add additional waste to the fire in order to maintain high burn temperatures until all waste has been destroyed. If waste is to be open burned on the ground, the use of deep or steep-walled 'pits' should be avoided as this will prevent the necessary turbulent mixing of oxygen with the burnable gases.

Desired operating temperature should be achieved as quickly as possible when operating any burning or incineration device. A rapid 'start-up' can be achieved by first loosely loading dry paper, paperboard packing and untreated wood into the bottom of the device. Dry, loosely loaded material will ignite more quickly and burn more evenly than a wet, tightly packed load. Wet waste should only be added after the fire is actively burning. Overfilling the burn chamber will prevent the turbulent mixing of burnable gases and oxygen, and should be avoided.

Modern batch feed incinerators are designed with primary and auxiliary burners to achieve and maintain the necessary high burn temperatures. Additional waste should only be added to these incinerators once the 'cool down' phase has been completed and it is safe to do so.

### **3.6 Ash Management**

The management of bottom ash and other unburned residue is an integral part of sound waste management and the ash will need to be disposed of. Extreme care must be exercised when handling ash because of its physical (i.e. glass, nails) and chemical hazards. Use closed or covered containers when moving or transporting bottom ash from the burning device or incinerator to the approved disposal site. This will minimize physical contact with the ash and the release of fine ash particles to the environment.

Avoid handling bottom ash until it is completely cool. Hot ash and embers can cause painful skin burns and should never be buried or landfilled as they could cause unburned waste in the disposal area to catch fire.

Bottom ash from the open burning of paper, paperboard packing, untreated wood waste and natural fiber textiles is suitable for burial in a designated pit or municipal landfill. Because incinerators can be used to destroy a wide variety of waste and the subsequent ash may contain a wide variety of toxic residues, bottom ash from an incinerator is suitable for burial only where it meets the criteria set out in Table 1 of the *Environmental Guideline for Industrial Waste Discharges into Municipal Solid Waste and Sewage Treatment Facilities*. Waste originating from outside a municipality and meeting the criteria may be deposited in municipal landfills only with the consent of the local government. Any bottom ash

not meeting the criteria set out in the *Environmental Guideline for Industrial Waste Discharges into Municipal Solid Waste and Sewage Treatment Facilities* is considered to be a hazardous waste. This ash is not suitable for landfilling and its management must comply with the *Environmental Guideline for the General Management of Hazardous Waste*.

### **3.7 Monitoring and Record Keeping**

Burn boxes, burn barrels and incinerators should be inspected for signs of damage, corrosion or other physical defects before each burn cycle. Repairs must be completed before the equipment is used again to ensure the health and safety of the operator, nearby people and the environment.

The various open burning methods tend to produce large quantities of smoke. Burning dry waste, high burn temperatures and sufficient air mixing with the burnable gases will reduce, but not eliminate, the amount of smoke and other pollutants that are generated. Large quantities of dark smoke indicate problems and inefficiencies with the combustion process and the generation of pollutants. Keep records of when, how much and what waste was burned, how the waste was loaded into the burning device or incinerator, the amount of smoke and bottom ash generated, how the fire was started and any other information that would help remind the operator of what worked well, and what didn't. These records would also assist the operator, Department of Environment and other regulatory agencies if complaints of nuisance smoke were to be received.

The operation of incinerators should be monitored using on-line instruments capable of continuously measuring the combustion process and stack emissions. The most basic measurement associated with the combustion process is temperature in both the primary and secondary burn chambers. Temperature readings outside of the normal range can warn the operator that the system is not working properly. In-stack monitoring provides the operator with additional information on the combustion process and on pollutants that may be released to the environment. A continuous opacity or particulate monitor should be installed in the incinerator stack to monitor emissions quantity. Additional combustion chamber and in-stack sampling and monitoring may be required depending upon the type and quantity of waste being incinerated. Each process and in-stack monitor should be equipped with visible and audible alarms to warn operators of poor incinerator operation. Refer to section 4.2 for additional information on incinerator monitoring requirements.

Written records should be kept by incinerator operators of what waste is burned, when and how much. Other record keeping requirements for incinerators may include:

- Operating data including readings from the process and emissions monitoring instruments.
- Weather conditions (i.e. air temperature and wind speed) at the time the incinerator is being operated.
- Repairs and maintenance performed on the incinerator and monitoring instruments.
- Major changes in operation.
- Quantity, condition and disposal location of the collected bottom ash.
- Operator training.

Records should be maintained on-site throughout the operational life of the facility and be made available to Inspectors and other regulatory officials upon request.

### **3.8 Operator Training**

The cornerstone of ensuring proper and safe operation of any equipment is adequate operator training. Facility owners must ensure qualified operators are available and have been properly trained to operate the equipment under both normal and emergency conditions. This will help to ensure the continued operation and maintenance of the equipment and facility, protection of the environment and the continued health and safety of the operator and nearby people. In particular, operators of incinerators should be trained in the following areas:

- Physical and mechanical features of the equipment and facility.
- Operation and trouble-shooting procedures.
- Environmental and safety concerns related to operation of the facility.
- Spill and fire emergency response procedures.
- Emergency and accident reporting procedures including use of the NWT/Nunavut 24-Hour Spill Report Line at (867) 920-8130.

Every incinerator manufacturer has its own approach to designing and building incinerators. Operators should be qualified and trained to safely operate the specific make and model of incinerator they are expected to operate.

## The Application of Open Burning and Incineration

The Department of Environment does not promote or endorse the burning and incineration of solid waste. This method of waste management should be implemented only after the owner or operator has made all reasonable and determined efforts to implement sound waste management planning and practices. Opportunities to reduce or eliminate the need for burning and incineration through changes in purchasing practices, reuse, recycling, segregation and diversion, and other changes or emission control upgrades that would result in emission reductions, must be reviewed periodically and implemented where practical. Refer to section 3 for additional information on best management practices.

This section provides guidance on the application of open burning and incineration of solid waste. In addition to the guidance and direction provided through the Guideline, the burning and incineration of solid waste may also be controlled through permits and licenses issued by Nunavut's co-management boards, Aboriginal Affairs and Northern Development Canada and other regulatory agencies. These permits and licenses must be complied with at all times.

### 4.1 Open Burning

Open burning is the burning of solid waste where limited or no control over the combustion process can be exercised by the operator. For the purposes of the Guideline, open burning includes burning waste that has been piled on the surface of the ground or placed in small open pits, or the use of a burn box, unmodified burn barrel or modified burn barrel. Open burning does not include the destruction of waste using a commercial or manufactured incinerator.

The open burning of unsegregated, or mixed, solid waste must not occur under any circumstances. Today's household, institutional, commercial and industrial garbage contains many materials which, when burned at low temperature, can result in the release of high levels of particulates, acid gases, heavy metals, carbon monoxide, dioxins, furans and other chemicals, some of which may cause cancer. The only solid wastes that may be disposed of through open burning are paper products, paperboard packing, untreated wood waste and natural fiber textiles (i.e. cotton, wool). Refer to section 3.2 for further information on what waste can and cannot be burned.

The open burning of solid waste remains a hazardous practice from a fire prevention and environmental management perspective. **Open burning on the ground** should not take place within a municipality without first obtaining authority to do so from the local community government. It should never occur at a municipal or industrial landfill because of the proximity of other combustible wastes within the working landfill. Where permission has been obtained and paper, paperboard packing, untreated wood waste and natural fiber textiles are open burned on the ground or in a small open pit, the activity must be attended and carefully monitored by a responsible adult at all times.

The preferred alternative to open burning on the ground is the use of an **enclosed burn box or burn cage**. These devices should be used when burning a moderate to large quantity of paper, paperboard packing, untreated wood waste and natural fiber textiles. They are designed to contain the waste while it is burning and reduce the likelihood of sparks or burning embers igniting adjacent vegetation and other combustible materials. When using a burn box or cage at a municipal or industrial landfill, extreme caution must be taken to ensure other areas of the working landfill are not ignited. Their

proper operation includes loading the device with dry waste to about half its capacity before igniting the fire. Additional or wet waste can be added in small batches so as not to dampen the fire once the fire has developed into a good flame and it is safe to do so.

The following general conditions should be met whenever open burning on the ground or burning using an enclosed burn box or burn cage takes place:

- Only paper, paperboard packing, untreated wood waste and natural fiber textiles are burned.
- The waste is burned in a controlled manner and at a site which is separate from combustible vegetation and other materials.
- Burning takes place only on days when winds are light and blowing away from people.
- Waste is burned in manageable volumes so the fire does not get out of control.
- The fire is started, attended and monitored at all times by authorized and qualified personnel.
- The waste is kept dry or covered to the extent practicable prior to burning.
- Where applicable, authority is first obtained from the municipality or other regulatory agencies.

**Modified or unmodified burn barrels** should only be used to burn small quantities of paper, paperboard packing, untreated wood waste and natural fiber textiles at remote locations such as traditional camps and field camps. Food and food packaging waste, which make up a significant portion of kitchen garbage produced at these camps, should not be burned. These wastes should be segregated daily and stored in wildlife-proof containers for frequent removal to an approved disposal site.

It is important that burn barrels are properly constructed and operated to ensure safety of the operator and the environment. Appendix 2 provides detailed construction drawings for a modified burn barrel. The Department of Environment will consider other designs if they provide an equivalent level of environmental protection.

Below are some easy-to-do actions to ensure unmodified and modified burn barrels are operated safely and waste is burned to the greatest extent possible<sup>6</sup>.

When locating and constructing a burn barrel:

- Locate the burn barrel in a place predominantly downwind of the camp site or burn only on days when the wind is light and blowing away from the camp.
- Ensure the burn barrel is located on gravel, rocky outcrop or other area free of combustible materials and vegetation to avoid accidentally starting a tundra fire.
- Ensure the detailed plans provided in Appendix 2 are carefully followed when constructing a modified burn barrel. The 'exhaust gas to combustion air' ratio is particularly important to achieving the maximum burn rate. A 2:1 ratio of exhaust stack to air intake area consisting of a 6-inch exhaust port and three 2-inch air intake holes positioned equidistantly around the bottom of the barrel a few inches up from the base is preferred.

---

<sup>6</sup> Testing of a modified burn barrel was performed by Environment Canada's Air Quality Research Division in April 2011 at the request of Nunavut's Department of Environment. Ten trial burns were completed prior to emissions testing in order to optimize and standardize barrel design and operational procedures. Following the trial burns, four test runs were performed and air emission samples collected for analysis. Results of the emission testing program will be available from Nunavut's Department of Environment. This list of recommended practices reflects the operational observations and measurements made during the testing program.

When operating a burn barrel:

- Inspect the barrel for any signs of leakage, corrosion or other physical defects before each burn cycle. Any necessary repairs must be completed before the equipment is used.
- Burn only dry waste. If wet waste must be burned, mix or batch the waste with other waste that has a low moisture content and high heating value (i.e. dry wood). This will help ensure the slow-burning wet waste is completely burned.
- Burn only paper, paperboard packing, untreated wood waste and natural fiber textiles. Food and food packaging waste should not be burned. Burning non-combustible waste (i.e. metal and glass) will rob the fire of valuable heat and should also be avoided. Food and food packaging, non-combustible and other waste that cannot be burned should be segregated and removed from the site for disposal on a regular basis.
- Do not overfill or densely pack waste into the burn barrel as air will be prevented from properly mixing with the waste. This will result in a smouldering, low temperature burn and smoke.
- Layering wet or slow burning waste with dry fast burning waste will help ensure more complete combustion of all waste.
- The burn barrel should not be used unless a responsible adult is available to monitor and watch over it until the fire has completely cooled.
- When using a modified burn barrel, the exhaust port on the 'metal basket insert' should be aligned between two of the 2-inch air intake holes in order to avoid short-circuiting of the combustion air directly through to the stack. Also, the spark arrest screen should be cleaned following each burn to ensure the stack does not become blocked with soot and other debris. If the barrel lid begins to 'puff' during a burn, inspect the screen to ensure it is not obstructing the flow of exhaust gases.

Care must be taken by the operator at all times to avoid skin contact with hot surfaces and avoid breathing smoke and other exhaust gases.

Written records of open burning should be kept by the operator. These record what was burned, when and how much, how waste was loaded into the device, how the fire was started, its location, weather conditions at the time and any other information that may help remind the operator of what worked well, and what didn't. These records are to be made available for review upon request by an Inspector.

Bottom ash from the open burning of paper, paperboard packing, untreated wood waste and natural fiber textiles is suitable for burial in a designated pit or municipal landfill site. Consent to use a municipal landfill should first be obtained from the local government. Bottom ash must be completely cooled before it can be safely handled and disposed of. Refer to section 3.6 for further information.

## **4.2 Incineration**

Incinerators differ from the simpler methods of open burning as the operator has a higher degree of control over the burning process. The resulting higher temperatures, longer holding times and greater turbulence lead to more complete combustion of the waste. Although a wider range of wastes can be destroyed using high temperature single or dual-chambered incinerators, determined efforts should still be taken to reduce the quantity and type of waste generated and to implement other changes which would result in reductions in air emissions. Refer to section 3 for further information proper waste management practices and a listing of what waste can and cannot be incinerated.

The incinerator manufacturer's operating instructions must be followed at all times to ensure designed temperature, holding time and turbulence conditions are achieved and to avoid damage to the facility. When operating during winter months, additional care must be taken because cold air introduced into the primary and secondary chambers may make it difficult for normal operating temperatures to be achieved. Operators must be properly trained and qualified to operate the equipment under both normal and emergency conditions. Owners are strongly encouraged to consult system manufacturers or other qualified persons with expertise before purchasing an incinerator. Additional guidance on the selection of incinerator technologies and their operational requirements can be obtained by referring to Environment Canada's *Technical Document for Batch Waste Incineration*.

The installation and operation of monitoring and control systems is critical for the proper and safe operation of any incinerator. The design, installation, certification and operation of continuous emissions monitoring systems (CEMS) should comply with the principles described in Environment Canada's *Protocols and Performance Specifications for Continuous Monitoring of Gaseous Emissions from Thermal Power Generation*. While the document is written for power generation facilities, the principles apply equally well to other types of facilities and continuous emissions monitoring systems. For incinerators operating in Nunavut, key operational parameters must be monitored at all times using on-line instruments capable of continuously measuring the combustion process and stack emissions quality. These instruments should be equipped with visible and audible alarms and be on-line whenever the incinerator is in operation, including 'start-up' and 'cool down' phases. Table 3 lists the monitoring and control system requirements.

**Table 3. Incinerator Monitoring and Control System Requirements**

System Description	Quantity of Waste to be Burned <sup>7</sup>	
	Less than 26 Tonnes per Year	Greater than 26 Tonnes per Year
Weight and composition of feedstock waste on a batch basis	✓	✓
Temperature in the primary and secondary combustion chambers	✓	✓
Opacity in the stack <sup>8</sup>	✓	✓
Initial Certificate of Operation <sup>9</sup>		✓

While not a specific requirement of the Guideline, additional one-time or continuous emissions monitoring may be required depending upon the type and quantity of waste to be incinerated. Examples include monitoring oxygen and carbon monoxide in the undiluted gases exiting the combustion chamber, such as a secondary chamber of a conventional dual-stage incinerator. Annual or periodic stack sampling for hydrogen chloride, dioxins and furans may also be required where the feedstock includes a significant quantity of organic materials that contain chlorine (i.e. chlorinated solvents and plastics, PVC piping, marine driftwood). The reader is encouraged to contact Nunavut's Department of Environment for guidance on additional emissions monitoring requirements.

<sup>7</sup> The CCME Canada-Wide Standard for Dioxins and Furans Emissions from Waste Incinerators and Coastal Pulp and Paper Boilers (2001) established a criterion of 26 tonnes per year to distinguish between a 'small facility' and 'large facility' incinerator.

<sup>8</sup> An acceptable alternative to monitoring opacity is to continuously monitor particulate matter in the stack.

<sup>9</sup> An initial Certificate of Operation includes satisfactory confirmation based on manufacturers' or third-party testing and certification that the unit is capable of complying with the requirements contained in the Guideline when operated in accordance with the manufacturer's recommendations and with minimal requirement for operator attention. The Certificate is to be provided to the Nunavut Department of Environment before the incinerator is placed into routine operational service.

Monitoring and control data should be recorded each time a burn cycle is completed. Records are to be maintained for the operational life of the incinerator and made available for review upon request by an Inspector. Refer to section 3.7 for additional information on monitoring and record keeping.

Bottom ash and other solid residue collected from the incinerator is suitable for burial where it meets the criteria set out in Table 1 of the *Environmental Guideline for Industrial Waste Discharges into Municipal Solid Waste and Sewage Treatment Facilities* or in accordance with land use permits and water licenses issued by Nunavut's co-management boards and Aboriginal Affairs and Northern Development Canada. Where bottom ash meets the criteria and is to be disposed of into a municipal landfill, the quantity transported off-site must be recorded and the consent of the local municipal government first be obtained. Bottom ash not meeting the criteria set out in the *Environmental Guideline for Industrial Waste Discharges into Municipal Solid Waste and Sewage Treatment Facilities* is considered to be a hazardous waste and must be managed in accordance with the *Environmental Guideline for the General Management of Hazardous Waste*.



## Conclusion

This is a general introduction to the practice of burning and incinerating solid waste. It is not intended to promote or endorse the practice but to provide the reader with information on the risks, hazards and best management practices associated with this activity. It also provides specific guidance on the application of burning and incinerating solid waste should this practice be undertaken by municipalities and operators of traditional, field and commercial camps.

Familiarity with the Guideline does not replace the need for the owner or person in charge, management or control of the solid waste to comply with all applicable federal and territorial legislation and municipal by-laws. The burning and incineration of solid waste may be controlled through permits and licenses issued by Nunavut's co-management boards, Aboriginal Affairs and Northern Development Canada and other regulatory agencies. These permits and licenses must be complied with at all times.

For additional information on the management of solid waste, or to obtain a complete listing of available guidelines, contact the Department of Environment at:

Environmental Protection Division  
Department of Environment  
Government of Nunavut  
Inuksugait Plaza, Box 1000, Station 1360  
Iqaluit, Nunavut, X0A 0H0

Phone: (867) 975-7729

Fax: (867) 975-7739

Email: [EnvironmentalProtection@gov.nu.ca](mailto:EnvironmentalProtection@gov.nu.ca)

Website: <http://env.gov.nu.ca/programareas/environmentprotection>

## References

Aboriginal Affairs and Northern Development Canada (AANDC). Handbook of Reclamation Techniques in the Yukon, (1999).

Alaska Department of Environmental Conservation and Alaska Energy Authority. Burning Garbage and Land Disposal in Rural Alaska, (2004).

<http://www.akenergyauthority.org/AEAdocuments/BurningGarbage.pdf>

Canadian Council of Ministers of the Environment (CCME). Canada-Wide Standards for Dioxins and Furans Emissions from Waste Incinerators and Coastal Pulp and Paper Boilers, (2001).

[http://www.ccme.ca/assets/pdf/d\\_and\\_f\\_standard\\_e.pdf](http://www.ccme.ca/assets/pdf/d_and_f_standard_e.pdf)

Canadian Council of Ministers of the Environment (CCME). Canada-Wide Standards for Mercury Emissions from Base-Metal Smelters and Waste Incinerators, (2000).

[http://www.ccme.ca/assets/pdf/mercury\\_emis\\_std\\_e1.pdf](http://www.ccme.ca/assets/pdf/mercury_emis_std_e1.pdf)

Canadian Council of Ministers of the Environment (CCME). National Guidelines for Hazardous Waste Incineration Facilities – Design and Operating Criteria, (1992).

[http://www.ccme.ca/assets/pdf/pn\\_1076\\_e.pdf](http://www.ccme.ca/assets/pdf/pn_1076_e.pdf)

Canadian Council of Ministers of the Environment (CCME). Operating and Emission Guidelines for Municipal Solid Waste Incinerators, (1989).

[http://www.ccme.ca/assets/pdf/pn\\_1085\\_e.pdf](http://www.ccme.ca/assets/pdf/pn_1085_e.pdf)

Canadian Council of Ministers of the Environment (CCME). Provisional Code of Practice for the Management of Post Use Treated Wood, (1996).

[http://www.ccme.ca/assets/pdf/pn\\_1227\\_e.pdf](http://www.ccme.ca/assets/pdf/pn_1227_e.pdf)

Environment Canada (EC). Protocols and Performance Specifications for Continuous Monitoring of Gaseous Emissions from Thermal Power Generation. Report EPS 1/PG/7, (1995).

<http://www.ec.gc.ca/Publications/844D7CF3-2F1D-4CA0-9290-0A885806F792/ProtocolsandPerformanceSpecs.pdf>

Environment Canada (EC). Operation of a Modified Burn Barrel for the Destruction of Food Waste in Remote Locations: Observational Summary. Report ERMS 2011-01.

Environment Canada (EC). Technical Document for Batch Waste Incineration, (2009).

<http://www.ec.gc.ca/gdd-mw/default.asp?lang=En&n=F53EDE13-1>

Government of Nunavut, Department of Environment. Environmental Guideline for General Management of Hazardous Waste, (2010).

<http://env.gov.nu.ca/node/82#Guideline Documents>

Government of Nunavut, Department of Environment. Environmental Guideline for Industrial Waste Discharges into Municipal Solid waste and Sewage Treatment Facilities, (2011).

<http://env.gov.nu.ca/node/82#Guideline Documents>



## **APPENDICES**



## **APPENDIX 1 - ENVIRONMENTAL PROTECTION ACT**

The following are excerpts from the *Environmental Protection Act*

1. "Contaminant" means any noise, heat, vibration or substance and includes such other substance as the Minister may prescribe that, where discharged into the environment,
  - (a) endangers the health, safety or welfare of persons,
  - (b) interferes or is likely to interfere with normal enjoyment of life or property,
  - (c) endangers the health of animal life, or
  - (d) causes or is likely to cause damage to plant life or to property;

"Discharge" includes, but not so as to limit the meaning, any pumping, pouring, throwing, dumping, emitting, burning, spraying, spreading, leaking, spilling, or escaping;

"Environment" means the components of the Earth and includes

- (a) air, land and water,
- (b) all layers of the atmosphere,
- (c) all organic and inorganic matter and living organisms, and
- (d) the interacting natural systems that include components referred to in paragraphs (a) to (c).

"Inspector" means a person appointed under subsection 3(2) and includes the Chief Environmental Protection Officer.

- 2.2 The Minister may
  - (a) establish, operate and maintain stations to monitor the quality of the environment in the Territories;
  - (b) conduct research studies, conferences and training programs relating to contaminants and to the preservation, protection or enhancement of the environment;
  - (c) develop, co-ordinate and administer policies, standards, guidelines and codes of practice relating to the preservation, protection or enhancement of the environment;
  - (d) collect, publish and distribute information relating to contaminants and to the preservation, protection or enhancement of the environment;
3.
  - (1) The Minister shall appoint a Chief Environmental Protection Officer who shall administer and enforce this Act and the regulations.
  - (2) The Chief Environmental Protection Officer may appoint inspectors and shall specify in the appointment the powers that may be exercised and the duties that may be performed by the inspector under this Act and regulations.
5.
  - (1) Subject to subsection (3), no person shall discharge or permit the discharge of a contaminant into the environment.
  - (3) Subsection (1) does not apply where the person who discharged the contaminant or permitted the discharge of the contaminant establishes that
    - (a) the discharge is authorized by this Act or the regulations or by an order issued under this Act or the regulations;
    - (b) the contaminant has been used solely for domestic purposes and was discharged from within a dwelling house;
    - (c) the contaminant was discharged from the exhaust system of a vehicle;

- (d) the discharge of the contaminant resulted from the burning of leaves, foliage, wood, crops or stubble for domestic or agricultural purposes;
- (e) the discharge of the contaminant resulted from burning for land clearing or land grading;
- (f) the discharge of the contaminant resulted from a fire set by a public official for habitat management of silviculture purposes;
- (g) the contaminant was discharged for the purposes of combating a forest fire;
- (h) the contaminant is a soil particle or grit discharged in the course of agriculture or horticulture; or
- (i) the contaminant is a pesticide classified and labelled as "domestic" under the *Pest Control Products Regulations* (Canada).

(4) The exceptions set out in subsection (3) do not apply where a person discharges a contaminant that the inspector has reasonable grounds to believe is not usually associated with a discharge from the excepted activity.

- 5.1. Where a discharge of a contaminant into the environment in contravention of this Act or the regulations or the provisions of a permit or license issued under this Act or the regulations occurs or a reasonable likelihood of such a discharge exists, every person causing or contributing to the discharge or increasing the likelihood of such a discharge, and the owner or the person in charge, management or control of the contaminant before its discharge or likely discharge, shall immediately:
- (a) subject to any regulations, report the discharge or likely discharge to the person or office designated by the regulations;
  - (b) take all reasonable measures consistent with public safety to stop the discharge, repair any damage caused by the discharge and prevent or eliminate any danger to life, health, property or the environment that results or may be reasonably expected to result from the discharge or likely discharge; and
  - (c) make a reasonable effort to notify every member of the public who may be adversely affected by the discharge or likely discharge.
6. (1) Where an inspector believes on reasonable grounds that a discharge of a contaminant in contravention of this Act or the regulations or a provision of a permit or license issued under this Act or the regulations has occurred or is occurring, the inspector may issue an order requiring any person causing or contributing to the discharge or the owner or the person in charge, management or control of the contaminant to stop the discharge by the date named in the order.
7. (1) Notwithstanding section 6, where a person discharges or permits the discharge of a contaminant into the environment, an inspector may order that person to repair or remedy any injury or damage to the environment that results from the discharge.
- (2) Where a person fails or neglects to repair or remedy any injury or damage to the environment in accordance with an order made under subsection (1) or where immediate remedial measures are required to protect the environment, the Chief Environmental Protection Officer may cause to be carried out the measures that he or she considers necessary to repair or remedy an injury or damage to the environment that results from any discharge.

## APPENDIX 2 – MODIFIED BURN BARREL DESIGN AND SPECIFICATIONS

A modified burn barrel is typically constructed from a 45 gallon metal fuel or oil drum. The modifications result in greater heat generation and retention, better mixing of the waste with incoming air and longer holding time inside the barrel. Together, these modifications result in more complete combustion of the solid waste than does open burning on the ground or in a pit.

Placing a metal screen over the top of the exhaust pipe may be required to prevent sparks and hot ash from escaping. Care should be taken to ensure the screen does not become blocked with soot.



A stove pipe attached to the top of the barrel allows smoke to escape and creates an effective draft.

Evenly spaced vents or holes cut above the bottom of the barrel enable fresh air to mix with waste inside the metal basket.

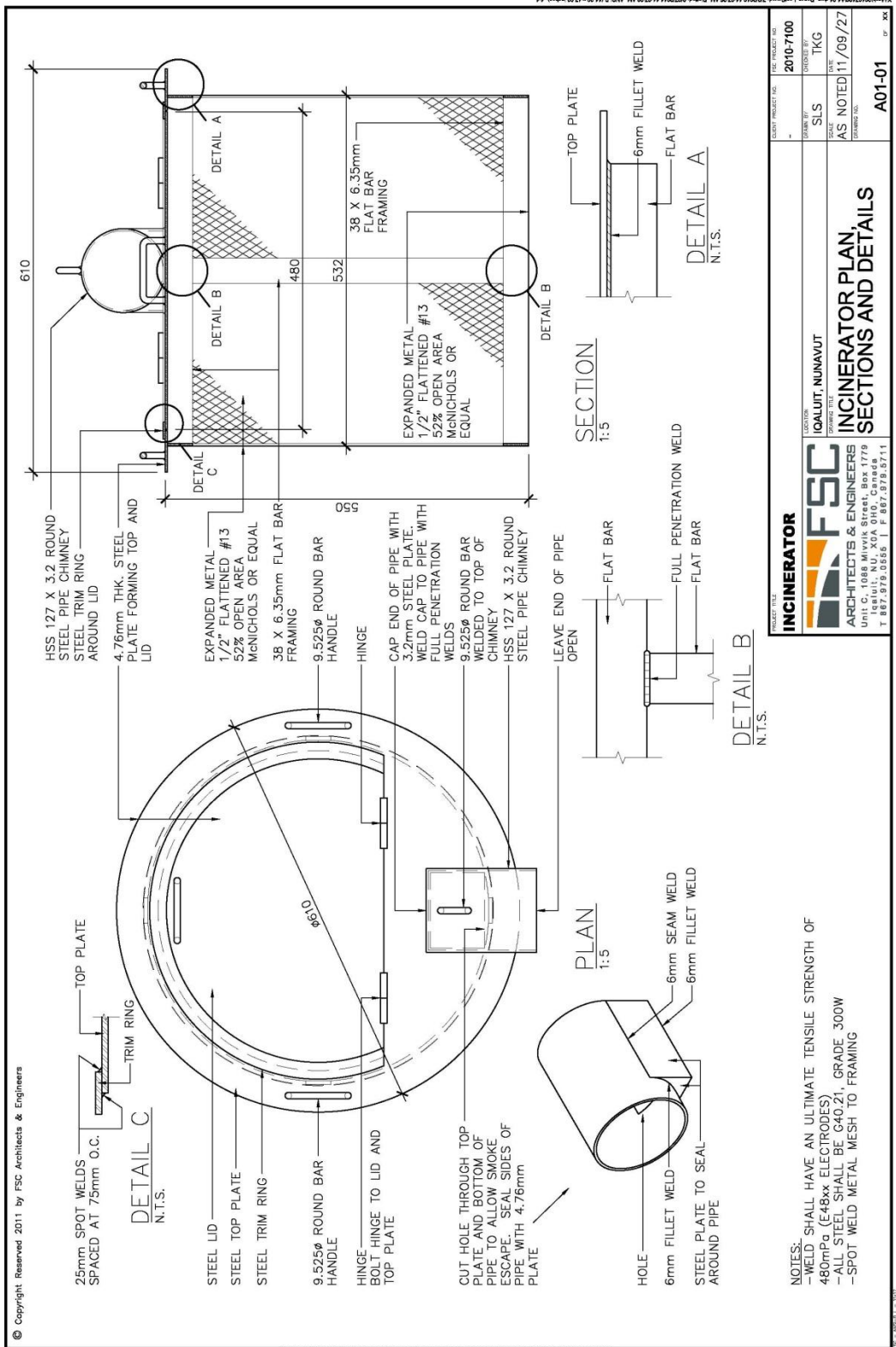


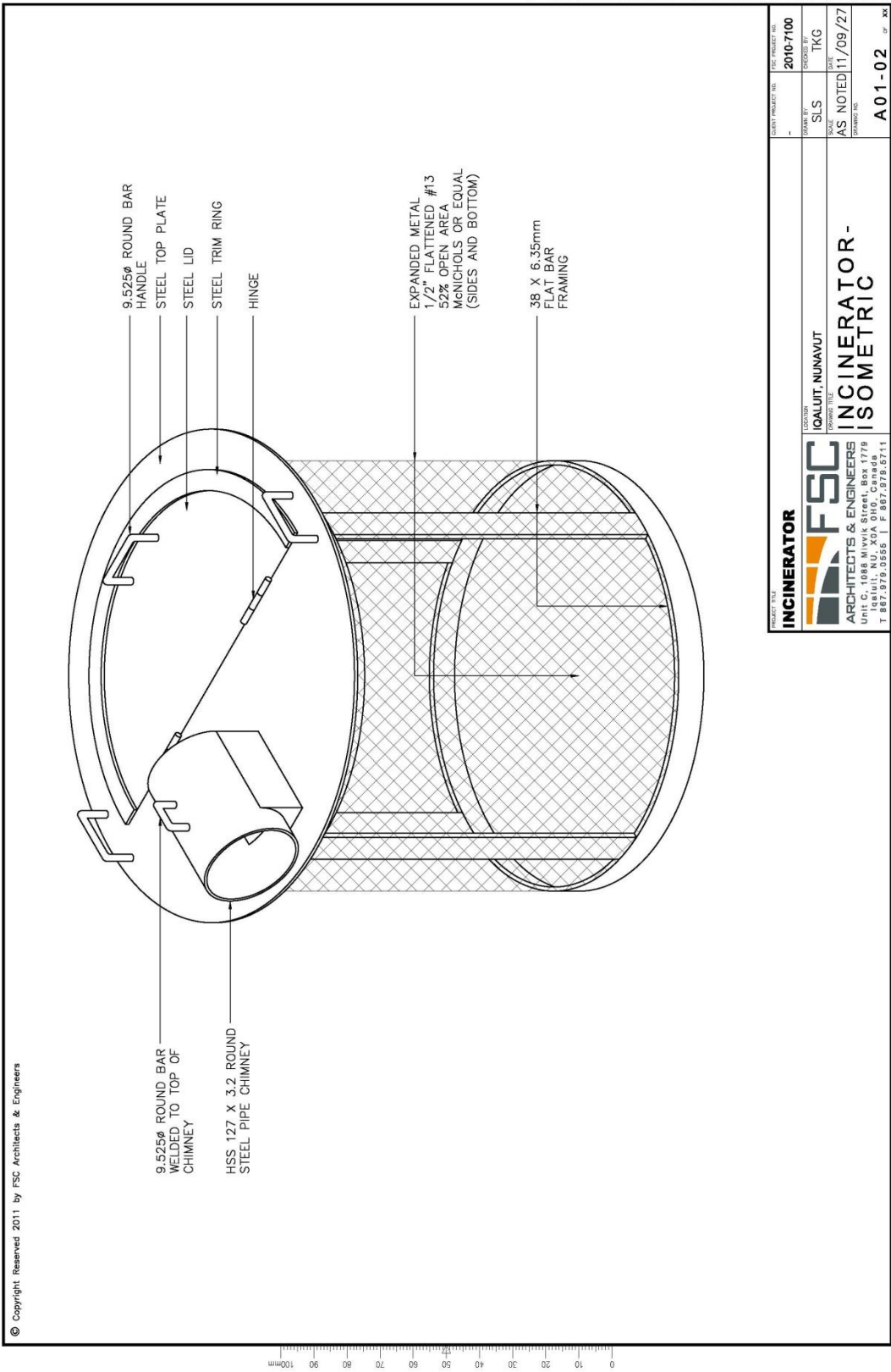
A hinged top helps to capture heat and enables easy loading and mixing of waste.



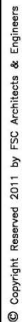
A metal basket or grate suspends the burning waste and enables mixing with the incoming air. The removable basket also enables access to any unburned ash that may collect in the bottom of the barrel.







X:\K:\2010\07\09\A01-02\Incinerator.dwg, Paper (2), Layout (2), 7/20/2010 11:27:28 AM, Plot (2), 9/27/2011 11:19:32 AM, ANSI B (11.00 X 17.00 inches), 1:1



## **Appendix 3**

### **Hazardous Waste Management Contacts**

## **Appendix 3**

### **Hazardous Waste Management Contacts**

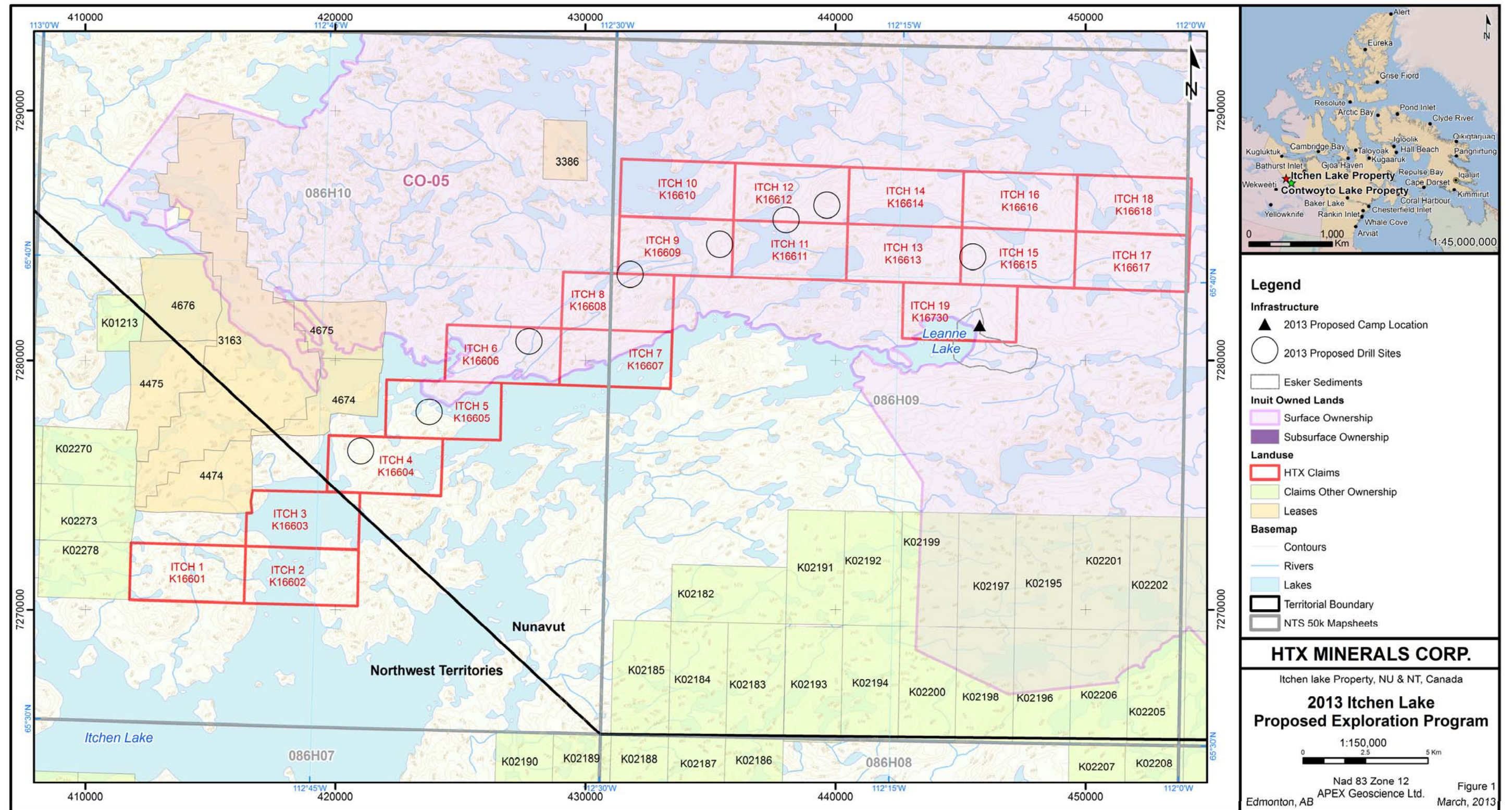
Modified from Appendix 11 of the Government of Nunavut *Guideline for the General Management of Hazardous Waste*

1. Environmental Protection Division  
Department of Environment  
Inuksugait Plaza P.O. Box 1000, Station 1360  
Iqaluit, NU, X0A 0H0  
Phone: (867) 975-7729 Fax: (867) 975-7739
  
2. Motor Vehicles Headquarters Division  
Department of Economic Development and Transportation  
Building 1104 A, Inuksugait Plaza  
PO Box 1000, Station 1500  
Iqaluit, NU, X0A 0H0  
Phone: (867) 975-7800 Fax: (867) 975-7870
  
3. Workers' Safety and Compensation Commission  
P.O. Box 669, Baron Building/1091  
Iqaluit, NU, X0A 0H0  
Phone: 1-877-404-4407 (toll free) Fax: 1-866-979-8501
  
4. Department of Community and Government Services (all Divisions)  
P.O. Box 1000, Station 700  
4th Floor, W.G. Brown Building  
Iqaluit, NU, X0A 0H0  
Phone: (867) 975-5400 Fax: (867) 975-5305
  
5. Office of Chief Medical Health Officer of Health  
Department of Health and Social Services  
P.O. Box 1000, Station 1000  
Iqaluit, NU, X0A 0H0  
Phone: (867) 975-5774 Fax: (867) 975-5755
  
6. NT-NU 24 Hour Spill Report Line  
Phone: (867) 920-8130 Fax: (867) 873-6924  
E-mail: [spills@gov.nt.ca](mailto:spills@gov.nt.ca)
  
7. Nunavut Emergency Management – Emergency 24 hours  
Headquarters: (867) 979-6262 or 1-800-693-1666  
Kitikmeot: (867) 983-2542
  
8. Office of the Fire Marshall (Nunavut Emergency Services Division)  
Department of Community Government and Transportation  
P.O. Box 1000, Station 700  
Iqaluit, NU, X0A 0H0  
Phone: 867-975-5315 Fax: 867-979-4221

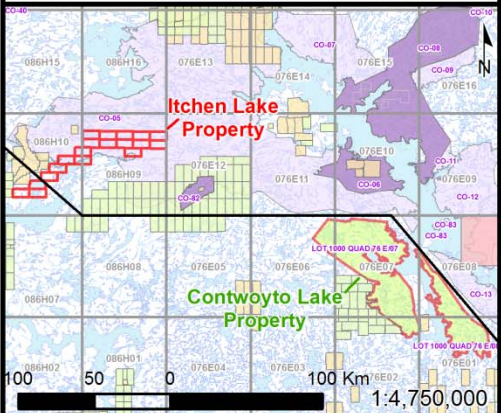
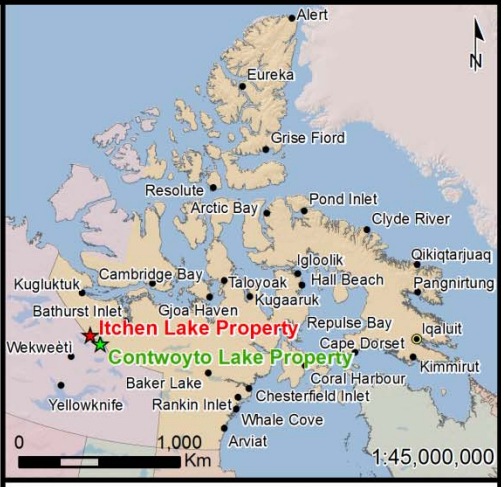
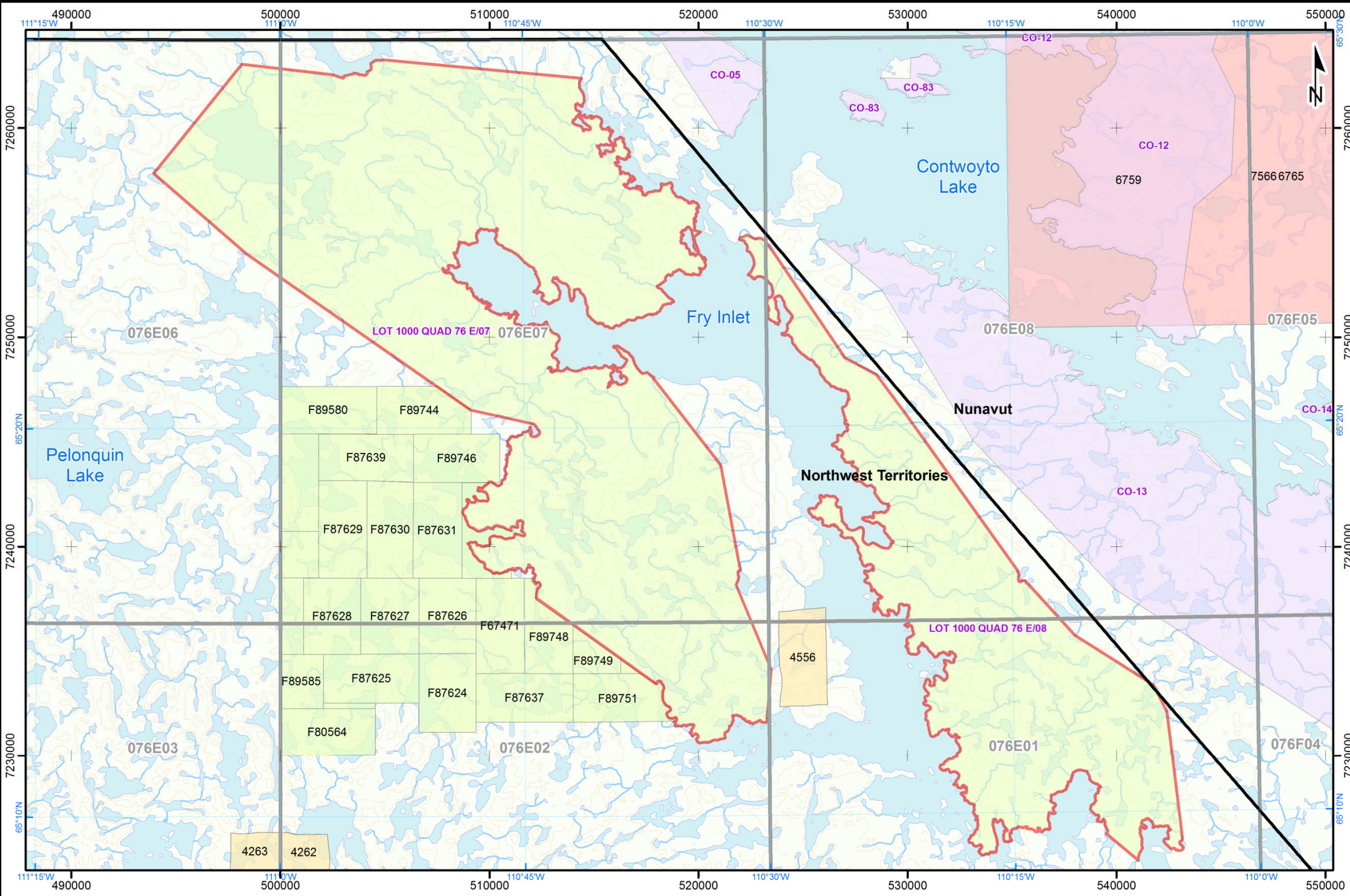
## Appendix 4 Maps

## Appendix 4 Maps









**Legend**

<b>Inuit Owned Land</b>	<b>Basemap</b>
Article 41 Lands (Contwoyto Property)	Rivers
Surface Ownership	Contours
Subsurface Ownership	Lakes
<b>Crown Land</b>	Territorial Boundary
HTX Claims	NTS 50k Mapsheets
Claims Other Ownership	
Leases	
Prospecting Permits	

**HTX MINERALS CORP.**

Itchen Lake and Contwoyto Lake Properties,  
NU & NT, Canada

**2013 Contwoyto Lake  
Proposed Exploration Program**

1:200,000

0 5 10 Km

Nad 83 Zone 12  
Edmonton, AB

Figure 2  
APEX Geoscience Ltd.  
March, 2013



