

IZOK / HOOD / GONDOR (IZOK CORRIDOR)



2014 Annual Report

Presented
January 2015

MINERALS AND METALS GROUP
26 – 1177 W. HASTINGS ST, VANCOUVER BC, V6E 2K3
TEL. 778 373 5600
FAX 778 373 5598

TABLE OF CONTENTS

Project Description.....	4
Izok Exploration Activity 2014.....	7
Hood Exploration Activity 2014.....	7
Planned Activity 2015.....	9
Environmental.....	9
Water Usage.....	10
Wildlife.....	10
Community.....	10
Air Operations.....	10
Reclamation Work.....	12
Waste Removal.....	12
Spill Contingency and Abandonment and Restoration Plans.....	12
Site Inspections.....	13
Permitting	13

FIGURES

Figure 1 : Project Location.....	5
Figure 2 : Permitted Areas of Work.....	6
Figure 3 : 2014 Drill Collar Locations Hood Area.....	8
Figure 4 : 2014 Drill Collar Locations Gondor Area.....	9

TABLES

Table I : 2014 Diamond Drilling Summary.....	7
Table II : 2014 Seasonal Employees from Local Communities.....	11
Table III : 2014 Air Operations	11

APPENDICES

Appendix I : Inspection Reports.....	14
Appendix II : Permitting.....	16
Appendix III : Water Usage Domestic/Industrial.....	22
Appendix IV : Laboratory Results Water Testing.....	23
Appendix V : Water Sampling Photos.....	23
Appendix VI : Wildlife Sightings Log.....	23
Appendix VII : Waste Control Documentation.....	24
Appendix VIII : KBL Waste Disposal Certificates.....	29
Appendix IX : Waste Management Plan.....	37
Appendix X : Spill Response Plan.....	43
Appendix XI : Abandonment and Restoration Plan.....	43
Appendix XII: Photos	43

PROJECT DESCRIPTION:

IZOK / HOOD

The Minerals and Metals Group (MMG) is a mining development company that has the mineral rights for the Izok and portions of the Hood River properties.

The Izok property is a VMS style poly-metallic deposit hosted in felsic rocks, the primary interest being its copper and zinc content. The property consists of three mineral leases and three claims. It is located approximately 300 km north of Yellowknife and is situated on both Crown and Inuit Owned Land (see figure 1).

The Izok Lake property has been well documented and explored by various groups over its 40 year history. Although activity in the region is documented since the 1960's, the first significant discovery was made in the mid-1970's by Texas Gulf. Since then, Izok Lake has played host to a number of interested groups, including Minnova and Inmet prior to the involvement of Wolfden and the subsequent series of takeovers that led the property to MMG.

MMG continues to test for extensions of the Izok resource, and follow up geophysical targets with exploration drilling. Although under a series of different companies (Wolfden/Zinifex/Oz) exploration has been continually managed under more or less the same technical team since the acquisition of Wolfden by Zinifex in 2007. During this period there has been several drill campaigns aimed at expanding the resource. The intervening years saw continued surface mapping and geophysical testing of surrounding rock units in the hopes of identifying extensions. Included in this regional work were the adjacent historic showings of Gondor and Hood River, previously explored by Kennecott and Inmet in the 1970s and 80s. Both locations host VMS style mineralization in greenstone geology, and represent potential additional resources that due to their proximity to Izok, are of interest.

Izok's remote location and the logistical challenges involved have discouraged possible developers over the years and it remains one of the last undeveloped large high grade base metal deposits.

Although MMG intends to continue exploring in the area in the hopes of expanding the current resource at Izok, activities will be scaled back from previous years and the long term plan for the project site involves care and maintenance with a continuation of rehabilitation work.

The project is supported by a 50 man camp located on Ham Lake, approximately 5km North of Izok Lake where the principle mineral resource is located.

Figure 1 : Location Map

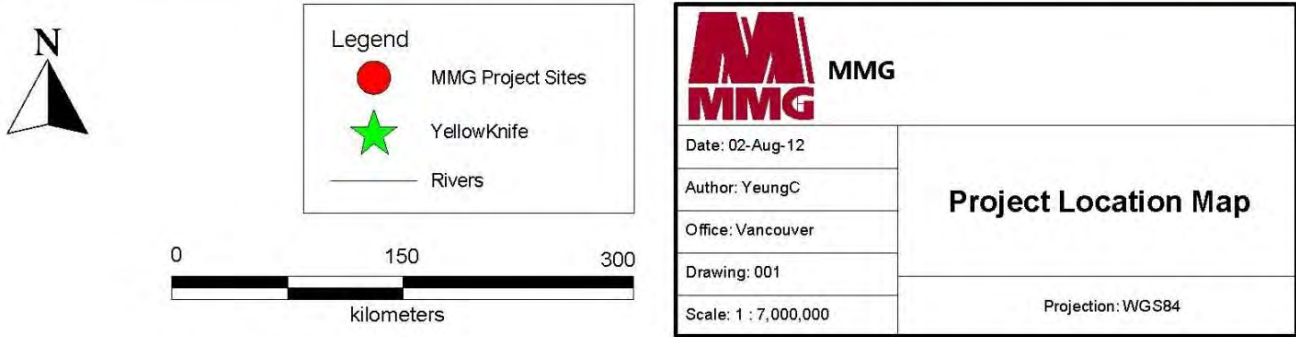
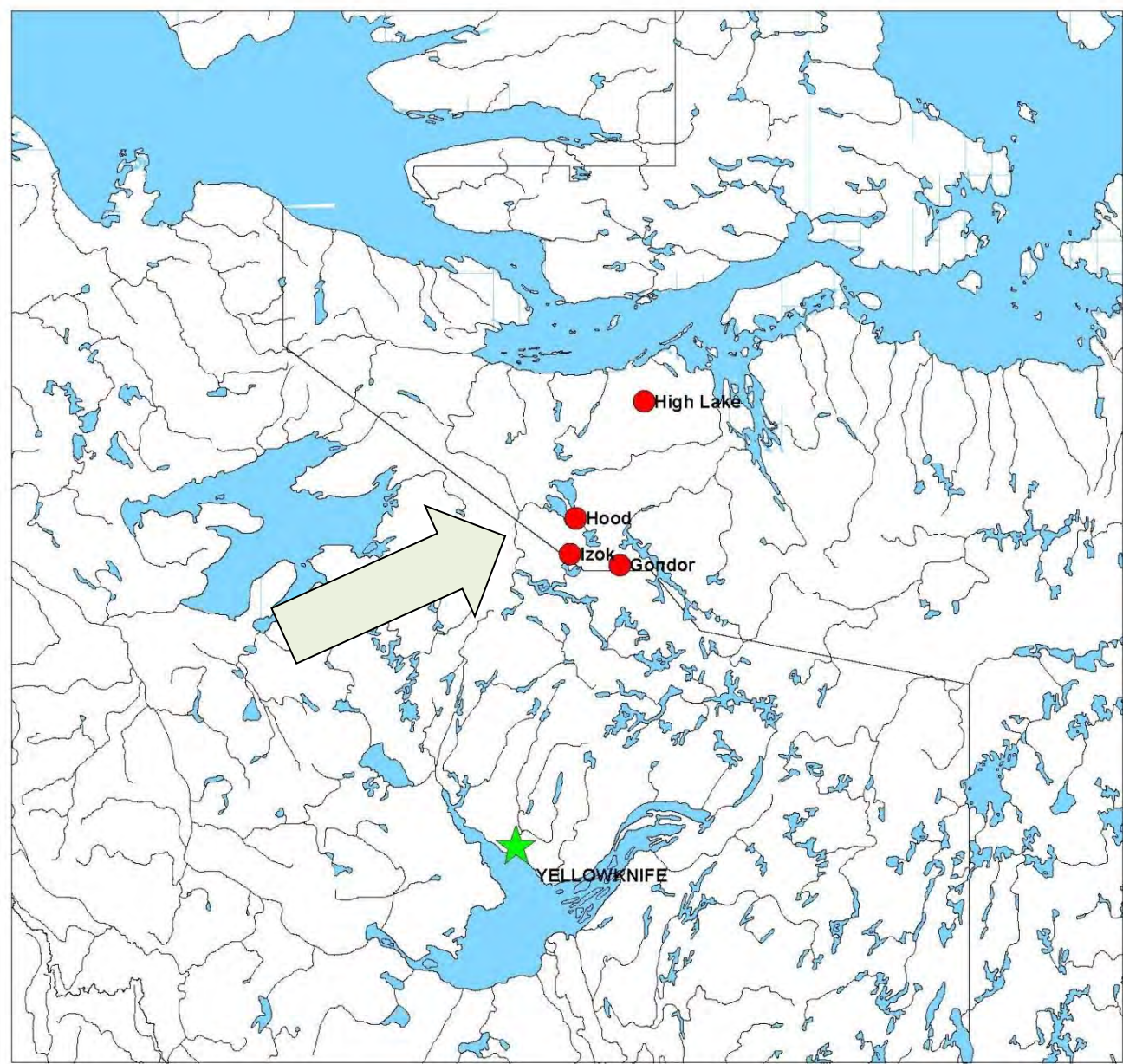
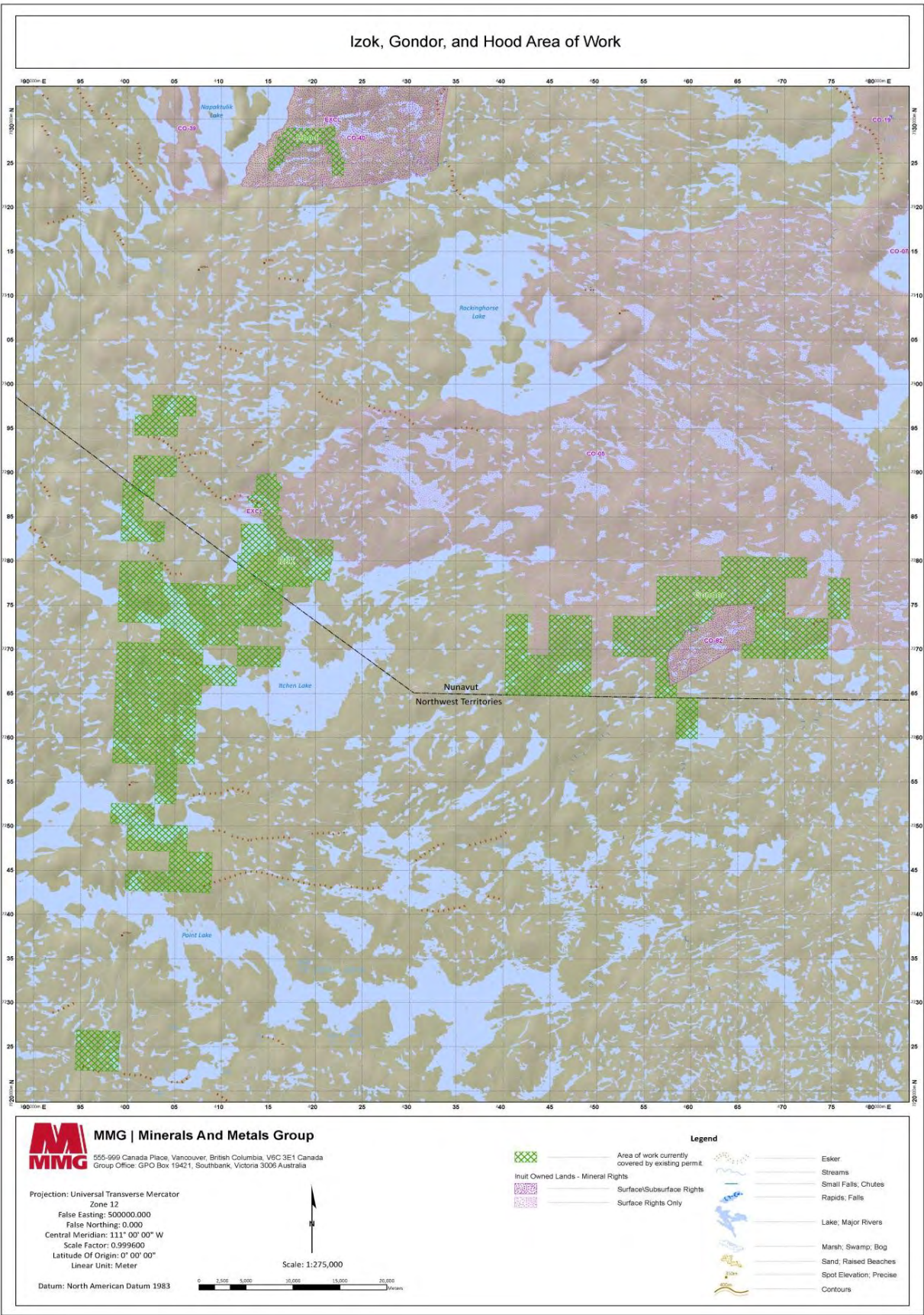


Figure 2 : Permitted Areas of Work



IZOK / HOOD / GONDOR EXPLORATION PROGRAM 2014:

The 2014 exploration program at Izok was limited to a short 4 drill hole program to test several targets that had been identified from geophysical interpretations in the Hood and Gondor target areas. A drilling summary table is found below. In addition, collar locations are identified in the subsequent figures #3 and #4. This program was originally intended for completion in 2013 but had been postponed. In total some 2147m of drilling was completed with 2 holes in the Hood area and 2 additional holes in the Gondor area. All of the drilling was supported by helicopter from the Ham Lake Camp (Izok) and carried out during the month of August. Drilling commenced on August 7th and was completed on August 30th. In addition to the drilling, weather data collection with regards to environmental baselines were continued, as well as ongoing reclamation efforts. Downhole electromagnetic geophysical surveys were conducted on the four drill holes but no surface geophysical surveys were carried out.



2014 DRILLING: COLLAR LOCATIONS

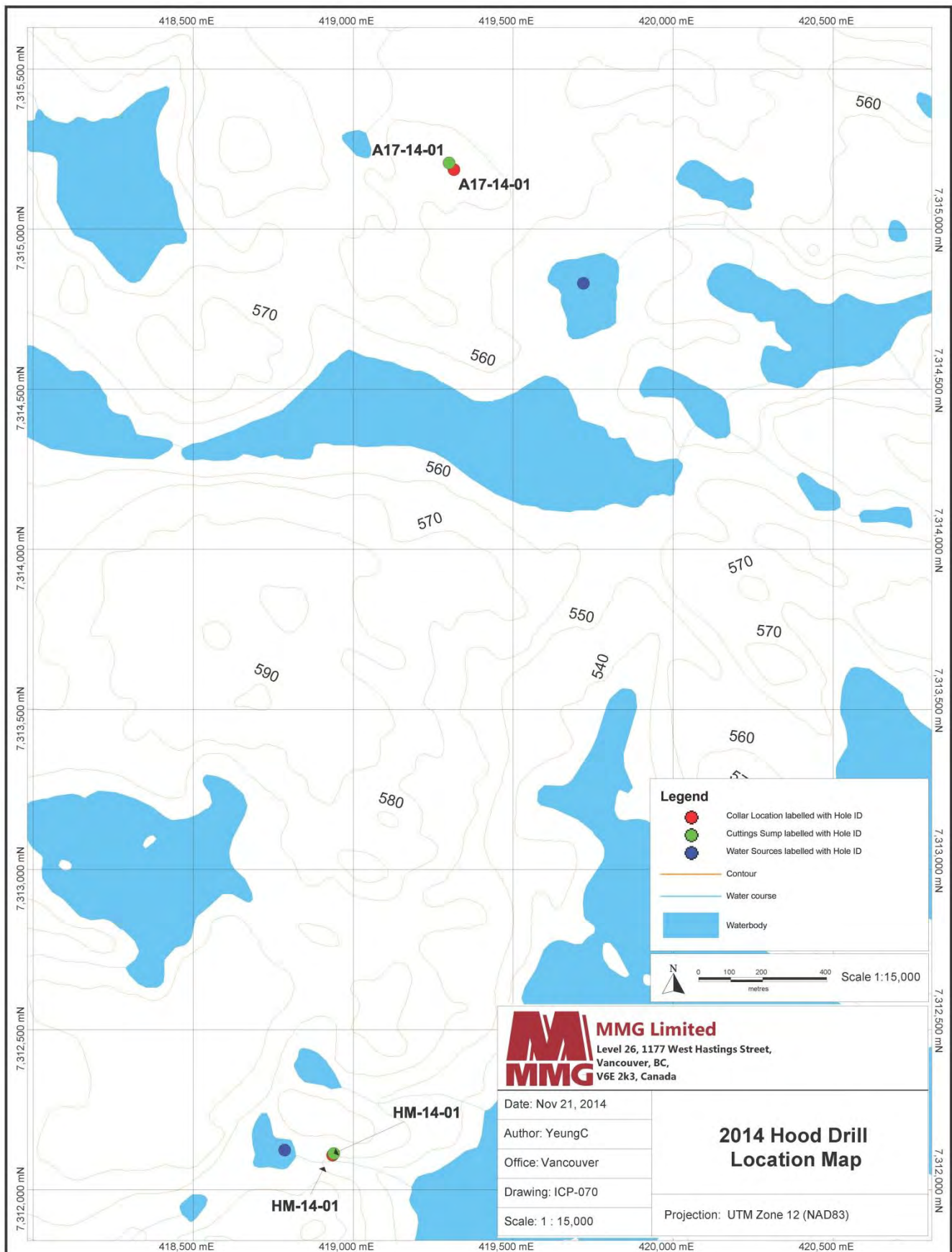
DDH HOLE_ID	UTM EAST	UTM NORTH	LONGITUDE	LATITUDE	ELEVATION
Hole_ID	E_N83	N_N83	Long_N83	Lat_N83	meters asl
HM-14-01	418935.1	7312108	112° 46' 50"	65° 55' 10"	562
A17-14-01	419314.6	7315185.6	112° 46' 27"	65° 56' 50"	573
G9-14-01	453664	7271470	112° 0' 13"	65° 33' 43"	506
G21-14-01	457232	7271975.2	111° 55' 35"	65° 34' 1"	506

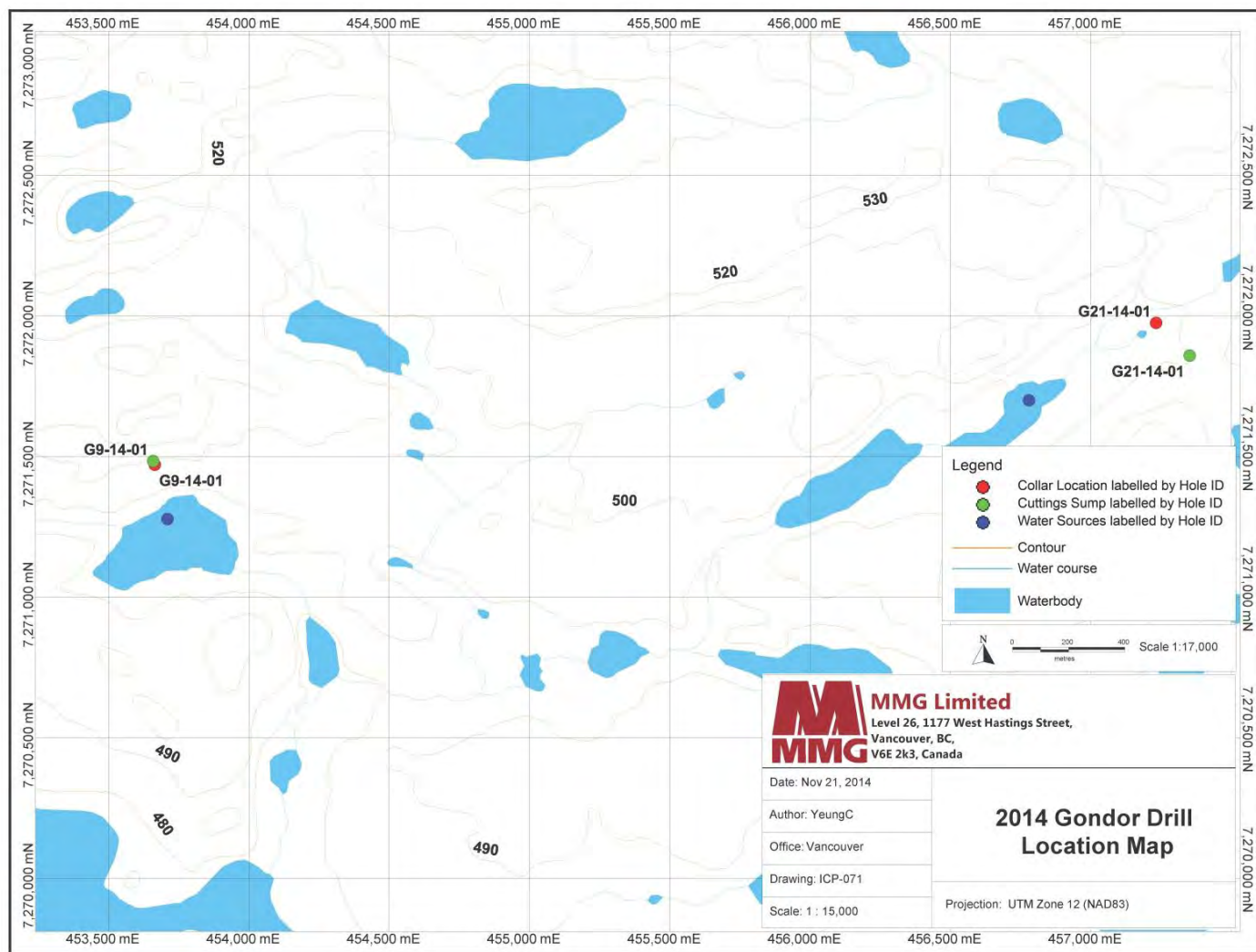
2014 DRILLING: CUTTINGS SUMP LOCATIONS

DDH HOLE_ID	UTM EAST	UTM NORTH	LONGITUDE	LATITUDE
Hole_ID	Cut E_N83	Cut N_N83	Long_N83	Lat_N83
HM-14-01	418939.0	7312113.1	112° 46' 50"	65° 55' 11"
A17-14-01	419299.4	7315206.5	112° 46' 28"	65° 56' 51"
G9-14-01	453658.1	7271483.0	112° 0' 14"	65° 33' 43"
G21-14-01	457351.5	7271858.7	111° 55' 26"	65° 33' 57"

2014 DRILLING: WATER SOURCES

SOURCE	UTM EAST	UTM NORTH	LONGITUDE	LATITUDE
Water source	Water mE	Water mN	Long_N83	Lat_N83
Lake	418786	7312124	112° 46' 55"	65° 55' 19"
Lake	419719	7314831	112° 45' 53"	65° 56' 38"
Lake	453709	7271277	112° 0' 6"	65° 33' 35"
Lake	456779	7271700	111° 56' 16"	65° 33' 49"





PLANNED EXPLORATION PROGRAM 2015:

There is no proposed exploration program for the 2015 field season. Work in 2015 will be centred on the continued reclamation of the Slave Project sites in preparation for care and maintenance. At Izok historic heavy equipment, old drill components, drums and other materials will be prepared for removal from site, and the demolition of historic structures will continue.

ENVIRONMENTAL:

Environmental baseline data collection was curtailed during 2014, primarily due to MMG's decision to not proceed with feasibility work at this time. The recording of weather data, however was continued. Wind direction and speed, temperature, and precipitation data is routinely monitored during field operations. Water usage volumes for domestic and industrial purposes are recorded for the annual water board report and are provided in the appendix.

No lake ice drilling was conducted in 2014 and therefore no lake ice water sampling was carried out.

Limited data gathering in maintenance of the projects baseline studies will continue in 2015 under supervision of Scott Trussler and the MMG Development Team.

An annual review of the Spill Contingency Plan is conducted, modifications are made if necessary, and the document is included in the appendices of the annual report on an annual basis.

WATER USAGE:

Water usage is divided into Industrial and Domestic applications, and is monitored. Water usage reporting is included in the appendices. The project is presently permitted for 100m³ per day total volume for both applications. On average the Camp consumes roughly 4m³ per day during capacity occupancy. The reduced activity and camp numbers this season resulted in lower usage. During the 2014 field season the camp was occupied from July 28th to the 5th of September. It reached a maximum population of 19 men for several days in late August. The average population over the entire period of occupation in 2014 was 17. The Ham Lake camp draws its water from Ham Lake by means of a submersible electric pump. The intake on the pump is screened.

Industrial usage is limited to those activities associated with drilling.

WILDLIFE:

Wildlife encounters and sightings during operations are documented by field personnel. A copy of the log is included in the appendices. As specified in our permit, low level flying is avoided unless absolutely necessary for operations and special care is taken during sensitive periods of animal life cycles. A copy of the current Wildlife Management Plan for MMGs operations in the Slave is included in the Appendices.

COMMUNITY:

MMG maintains an office in Kugluktuk, the closest Inuit community to our project sites. We have on permanent staff there Mr. Donald Havioyak, who acts as our community liaison. His primary job is to keep local community members informed of our exploration activities, and address concerns and questions they may have on behalf of the company. He is also instrumental in the hiring of local staff, aiding applicants in resume preparation and conducting initial interviews on our behalf. A list of temporary employees from local communities is included below. Aside from Kitchen and Camp Maintenance positions, the Environmental programs also employed locals as field assistants and guides.

Table II : Local Employment

Employee Name	Community	Mandays
Carl Katiak	Kugluktuk	37
TOTAL		37

AIR OPERATIONS:

Izok was opened on the 28 of July, 2014. Weekly crew changes along with food re-supply was conducted with Summit Air's Dornier aircraft, and throughout field operations, a AS-B3 helicopter was based onsite that made local flights daily in order to facilitate the drilling program.

During operations, low level flight is avoided in order to minimize noise impacts on local wildlife. When operational areas coincide with seasonal migration paths or calving grounds, activity is diverted or suspended.

A table showing 2014 air operations conducted out of the Izok site is included on the following page:

Table III : 2014 Air Operations

MONTH	FIXED WING FLIGHTS	HELICOPTER HOURS
July	4	6.2
August	5	149
September	3	21.4
TOTAL	12	176.6

RECLAMATION WORK:

Clean up around the Izok camp location is continuous and ongoing, with the removal of waste, unused material and equipment. During the 2014 season, a continued effort was made to address legacy infrastructure, “inherited” by MMG from previous site operators. Historic heavy equipment was in some cases partially disassembled and prepared for removal from site along with old drill steel and drill components. Photographic documentation of the above mentioned reclamation efforts are included in the appendices, along with waste transport records and KBL disposal certificates. Approximately 50 historic drill casings and anchors in the Hood 10 area and on the Izok Lake Island were removed at ground level. 400 empty drums were crushed and positioned at the runway for backhaul in 2015, all fuel, berms and empty drums at the Hood camp were removed from site, and 3 of 5 modern 11,000 litre bulk fuel tanks were completely drained and decommissioned. Building supplies and timbers at the historic Izok camp site were removed and disposed of. All items in the historic driller’s laydown adjacent to the Ham Lake camp were removed. The area has been fenced off to promote revegetation thus returning some 10,000 square metres back to tundra. 165,000 lbs of drill equipment has been positioned at the runway for the purpose of backhauling to Yellowknife at the first available opportunity.

WASTE REMOVAL:

All waste is streamed to differentiate between burnable waste, recyclables, and those waste products that must be transported to Yellowknife for treatment off site. Burnable waste and sewage is incinerated on site by a diesel powered forced air furnace. Waste that is not approved for burning, or that is identified as recyclable is removed from the waste stream. Incineration remains are collected and sealed in empty 45 gallon fuel drums for transport back to Yellowknife. Waste is handled by expeditors in Yellowknife and transferred over to KBL Environmental for appropriate disposal. Transport and final disposal records from KBL have been included in the appendices. Waste that involves petroleum or other chemical products is transported by KBL to Edmonton for disposal in a certified facility. Human waste is collected daily from ‘pacto’ style toilets and incinerated on site. The updated Waste Management Plan for the Slave Project sites is included in the appendices along with daily records of waste streaming and disposal.

SPILL CONTINGENCY AND ABANDONMENT AND RESTORATION:

The Spill Contingency and Abandonment and Restoration Plans for the site underwent review and modification in January 2014 and the updated versions were forwarded to AANDC and the NIRB. The Plans have historically been included in the annual report submittals to regulatory agencies. As the methodology and scope of Exploration activity remains largely unchanged, so too do the plans. The updated Spill Contingency and Abandonment and Restoration Plans have been included in the appendices of this report.

SITE INSPECTIONS:

Visual site inspections of the Izok project site were conducted by Eva Paul of Aboriginal Affairs and Northern Development (also acting on behalf of the Nunavut Water Board). In addition Baba Pederson visited. A copy of the AANDC inspection report is included in the Appendices with dates and findings. Observations previously recorded during earlier inspections including secondary containment, daily waste treatment and transport logs, and ongoing reclamation efforts involving historic structures were all satisfactorily addressed and Camp Management teams were commended for their efforts.

PERMITTING:

Both the Land Use Permit and Water Licence associated with the Izok Property underwent renewal in 2012.

A single LUP (N2012C0005) issued by Aboriginal Affairs and Northern Development Canada now serves to cover both the Izok and the Hood/Gondor project areas. An extension request for this permit was submitted and approved for the 2014 field season and a copy is included in the appendices.

The renewal of the Water License was approved in 2012 and the new license (2BE – IZO1217) now carries an expiry date of 2017. The previous permit expired December 31st, 2012. In July of 2013, the Nunavut Water Board issued an allowance for limited open burning in order to address a specific reclamation issue. We hope to be again granted an allowance in 2015 for the continuation of reclamation work with regards to historic structures.

The Land Use Agreement for operating on IOL ground was successfully renewed with the Kitikmeot Inuit Association in February of 2014.

It's worth noting that the areas of interest and the scope of work being carried out remain unchanged. Copies of all current operating permits are included in the Appendices.

APPENDICES

Appendix I : 2014 Site Inspections



Aboriginal Affairs and
Northern Development Canada

Affaires autochtones et
Développement du Nord Canada

WATER LICENCE INSPECTION FORM

☒ Original
☐ Follow-Up Report

Licensee MMG	Licensee Representative Peter Cullinane
Licence No. / Expiry 2BE-IZO1217	Representative's Title Field Program Manager
Land / Other Authorizations 86H/10-001	Land / Other Authorizations N2012C0005
Date of Inspection 15/08/2014	Inspector Eva Paul
Activities Inspected <input checked="" type="checkbox"/> Camp <input checked="" type="checkbox"/> Drilling <input type="checkbox"/> Mining <input type="checkbox"/> Construction <input checked="" type="checkbox"/> Reclamation <input checked="" type="checkbox"/> Fuel Storage <input type="checkbox"/> Roads/Hauling <input type="checkbox"/> Other:	

Conditions:	A - Acceptable	C - Concern	U - Unacceptable	NA - Not Applicable	NI - Not Inspected
Water Use	Condition	Comment	Site Conditions	Condition	Comment
Intake/Screen	A		Water Management Structures	A	
Flow Measure. Device	A		Culverts / Bridges	NA	
Source: Ham Lake	A		Drainage	A	
Water Use:	A	1	Erosion / Sediment	A	
Recirculation (y / n)	A		Mitigation Measures	A	
			Reclamation Activities	A	4
			Materials Storage	A	
			Signage	NA	
Waste Disposal					
Waste Water	A	2			
Solid Waste	A	3	Monitoring		
Hazardous Waste	A	3	Sample Collection / Analysis	NA	
*The number in the comments field will correspond with specific comments provided below.					
Samples taken by Inspector:			Location(s):		
<input type="checkbox"/> Yes <input checked="" type="checkbox"/> No					

SECTION 1	<input checked="" type="checkbox"/> Comments (s.1)	<input checked="" type="checkbox"/> Non-Compliance with Act or Licence (s.2)	<input type="checkbox"/> Action Required (s.3)
<p>A Water Licence Inspection was conducted on August 15, 2014. I was accompanied for the inspection by Field Program Manager Peter Cullinane. It is a small camp this year (less than 20) and only on-site for a month. Nevertheless, site improvements at Ham Lake Camp are evident. There has been considerable effort to organize the site; backhauling waste and minimizing the amount of equipment and goods kept on hand. The drill sites were found to be well-managed and clean. MMG is running a one-drill program this summer.</p>			
<p>1. The camp has reverted to an on-demand system. The pump is electric so that it can be activated on-demand from camp. The drill is still using a continuous flow system; using up to 67m² per day. However, with one drill there is no likelihood of exceeding the licensed amount of water.</p>			
<p>2. The grey water sump has been modified; it is now covered, and rocks have been put in place to diffuse the water. No grease or food particles were evident in the water, which soaks easily into the sandy soil. The drill is currently not requiring salt, so cuttings are relatively benign. Cuttings are being deposited to rocky depressions nearby the drills, and an effort made to keep the cuttings from flowing onto the vegetation.</p>			
<p>3. Waste management practices are good. Waste segregation is occurring, and only acceptable materials burned in the incinerator. Bulky waste and hazardous waste at site has been reduced through backhauls, all hazardous materials and waste were found in</p>			



Canada



secondary containment.

4. A concerted effort has been made to address the historical drill sites that require remediation. Cuttings and anchors are being pulled or cut at ground level and will be capped. The historic drill laydown area behind camp has been completely cleaned up and fenced off to allow the area to revegetate. Peter plans to investigate remediation options for the old tank farm in preparation for next season. Please consult with the *Government of Nunavut's Environmental Guideline for Site Remediation, 2010*, to determine soil reclamation objectives for the tank farm. This document can be found at: <http://env.gov.nu.ca/sites/default/files/Guideline%20Contaminated%20Site%20Remediation.pdf>. If there is contamination and in-situ remediation is planned, please discuss your intent with a technical advisor at the NWB. It will likely require that you submit a proposal for modification to the NWB and update the A&R plan to include a section for remediation of hydrocarbon-impacted soils.
5. Records (water and waste) were found to be up-to-date and comprehensive. Routine inspection logs were also maintained.
6. Plans are updated annually and submitted with the Annual Report.
7. Notification of the potential water sources to be used for drilling was not submitted prior to commencement of drilling. They were provided to the Inspector during the course of the inspection.

SECTION 2	<input type="checkbox"/> Comments	<input checked="" type="checkbox"/> Non-Compliance with Act or Licence	<input type="checkbox"/> Action Required
Part C Item 3: Failure to provide coordinates for potential water sources prior to commencement of drilling.			
SECTION 3	<input type="checkbox"/> Comments	<input type="checkbox"/> Non-Compliance with Act or Licence	<input type="checkbox"/> Action Required
Keep up the good work! I look forward to my next visit.			

Licensee or Representative Peter Cullinane	Inspector's Name Eva Paul
Signature 	Signature 
Date Aug 15 2014	Date 15/17/2014

APPENDICES:	<input type="checkbox"/> Inspection Photos	<input type="checkbox"/> Sample Results	<input type="checkbox"/> Other: _____
-------------	--	---	---------------------------------------

Office Use Only:	Follow-up report to be issued by Inspector	<input type="checkbox"/> Yes <input checked="" type="checkbox"/> No
------------------	--	---

CC: Phyllis Beaulieu, Manager of Licensing, NWB
Erik Allain, Manager of Field Operations, AANDC
Baba Pedersen, Resource Management Officer, Kitikmeot Region, AANDC

Appendix II : 2014 Permitting



Aboriginal Affairs and
Northern Development Canada

Affaires autochtones et
Développement du Nord Canada

Land Administration
P.O. Box 100
IQALUIT, NU X0A 0H0
Phone: 867-975-4275
FAX: 867-975-4286

Your file - Votre référence

Our file - Notre référence

March 1st, 2012

MMG Resources Inc.
Suite 55-999 Canada Place
Vancouver, BC
V6C 3E1

Dear Theodore Muraro:

Re: Land Use Permit #N2012C0005
Type of Operation: Mining (Exploration)
Location: Izok Lake Area, Kitikmeot, NU, NTS 76E & 86H

Enclosed is your copy of Land Use permit number N2012C0005 authorizing your project as described in your application dated December 20th, 2011, received by this office January 24th, 2012.

Your application has received a wide distribution to other Federal departments, Government of the Nunavut departments, communities in the area of your operation and concerned Inuit groups. In distributing your application the Nunavut Impact Review Board (NIRB) sought comments from these various agencies based on their area of expertise that will help ensure minimum negative impact on the environment. The issuance of this permit indicates that as a result of the NIRB environmental screening process it was decided that the potentially adverse environmental effects that may be caused by your proposal are mitigable with known technology and are not significant. The terms and conditions in the permit will, in our opinion, provide the necessary protection to the environment.

Please ensure that you adhere to the operating conditions annexed to your permit. Should you have any questions regarding any conditions of this permit, please contact Tracey McCaie at (867) 975-4283 or email landsmining@inac.gc.ca.

Sincerely,

Tracey McCaie
Land Administration Specialist

cc: Manager, Field Operations
RMO - Kitikmeot
NIRB
CIDMS #509606

Canada



**LAND USE PERMIT
NORTHERN AFFAIRS PROGRAM**

**PERMIS D'UTILISATION DES TERRES
PROGRAMME DES AFFAIRES DU NORD**

Permit Class - Permis Catégorie	Permit No - NE de permis
A	N2012C0005

Subject to the Territorial Land Use Regulations and the terms and conditions in this permit, authority is hereby granted to:

Sous réserve du Règlement sur l'utilisation des terres territoriales et des conditions de ce permis:

MMG Resources Inc.
Permittee - Détenteur de permis

To proceed with the land use operation described in the application of:

Est autorisé à entreprendre les travaux d'exploitation des terres décrits dans la demande de permis du:

Signature	Date
Theodore Muraro	March 1st, 2012
Type of Land Use Operation - Genre de travaux d'exploitation des terres	
Mining (Exploration)	
Location - Emplacement	
Izok Lake Area, Kitikmeot, NU, NTS76E & 86H	

This permit may be assigned, extended, discontinued, suspended or cancelled pursuant to the Territorial Land Use Regulations.

Ce permis peut faire l'objet d'une cession, d'une prolongation d'une cessation d'une suspension ou d'une annulation, en vertu du Règlement sur l'utilisation des terres territoriales.

Dated at

Date à Iqaluit

Engineer

Ingénieur



This

Ce 1st Day of March, 2012

Commencement Date

Date du début des travaux March 1st, 2012

Expiry Date

Date d'achèvement February 28th, 2014

NOTE

IT IS A CONDITION OF THIS PERMIT THAT THE PERMITTEE COMPLY WITH ANY OTHER APPLICABLE ACT, REGULATION, ORDINANCE BY - LAW OR ORDER DEFAULT HEREOF MAY RESULT IN SUSPENSION OR CANCELLATION OF THIS PERMIT.

REMARQUE

LE DÉTENTEUR DU PRÉSENT PERMIS DOIT SE CONFORMER À TOUT AUTRE RÈGLEMENT, LOI, DÉCRET RÈGLEMENT MUNICIPAL OU ARRÊTÉ APPLICABLE. LE MANQUEMENT À CETTE OBLIGATION POURRAIT DONNER LIEU À LA SUSPENSION OU À L'ANNULATION DU PERMIS.

Canada



Land Administration
P.O. Box 100
Iqaluit, NU X0A 0H0
Phone: 867-975-4275
Fax: 867-975-4286

February 18, 2014

MMG Limited
Level 26 – 1177 West Hastings St.
Vancouver, BC
V6E 2K3

Dear Mr. Muraro:

Re: Land Use Permit #N2012C0005
Type of Operation: Mining (Exploration)
Location: Izok Lake Area, Kitikmeot, NU, 76E & 86H

Further to our letter dated January 10, 2014, this will confirm that the above land use permit is hereby extended from February 28, 2014 to February 28, 2015.

All conditions annexed to land use permit N2012C0005 will apply to this extension.

Sincerely,

Tracey McCaie
Land Administrator Specialist

cc: Manager, Field Operations
RMO - Kitikmeot RMO
NIRB

CIDM#780647



NUNAVUT WATER BOARD WATER LICENCE RENEWAL

Licence No. 2BE-IZO1217

Pursuant to the *Nunavut Waters and Nunavut Surface Rights Tribunal Act* and the *Agreement Between the Inuit of the Nunavut Settlement Area and Her Majesty the Queen in right of Canada*, the Nunavut Water Board, hereinafter referred to as the Board, hereby grants to

MMG INC.

(Licensee)

26th FLOOR -1177 WEST HASTINGS ST., VANCOUVER, BC V6E 2K3

(Mailing Address)

hereinafter called the Licensee, the right to alter, divert or otherwise use water or dispose of waste for a period subject to restrictions and conditions contained within this Licence renewal:

Licence Number/Type: 2BE-IZO1217 TYPE "B"

Water Management Area: NUNAVUT 07

Location: IZOK LAKE PROJECT
KITIKMEOT REGION, NUNAVUT

Classification: MINING AND MILLING UNDERTAKING

Purpose: DIRECT WATER USE AND DEPOSIT OF WASTE

Quantity of Water use not to Exceed: ONE HUNDRED (100) CUBIC METRES PER DAY

Date of Licence Issuance: DECEMBER 20, 2012

Expiry of Licence: DECEMBER 31, 2017

This Licence renewal issued and recorded at Gjoa Haven, Nunavut, includes and is subject to the annexed conditions.

Thomas Kabloona,
Nunavut Water Board
Chair

.../2



ᑎᓄᓐᓂᓐ ᓂᓕᓐᓂᓐ
NUNAVUT WATER BOARD
NUNAVUT IMALIRIYIN KATIMAYINGI
OFFICE DES EAUX DU NUNAVUT

File No.: 2BE-IZO1217/TR/D2

June 24, 2013

Teodore J. Muraro
Operations Manager – Canadian Exploration
MMG Limited
Level 26 – 1177 West Hastings St.
Vancouver, BC, V6E 2K3, Canada
E-mail: teodore.muraro@mmg.com

RE: Licence No. 2BE-IZO1217, Type "B", MMG Limited:
Request to Carry out Open Burning of Acceptable Materials.

Dear Mr. Muraro,

The Nunavut Water Board ("NWB") received on May 3, 2013 a request from MMG Limited to complete controlled open burning, without the use of an incinerator, of acceptable materials (untreated wood materials such as paper, cardboard and wood) during the reclamation of the trailer camp which involves dismantling the trailers (e.g. breaking down all interior finishing's, removing windows, removing sheet metal siding, and removal of all other non-combustible wastes) at the Ham Lake Camp site. On May 15, 2013, the NWB acknowledged receipt and distributed the request to interested persons and parties for a thirty (30) day review period. Comments were received from Aboriginal Affairs and Northern Development Canada (AANDC), Environment Canada (EC) and Kitikmeot Inuit Association (KIA) on June 11, 2013, May 16, 2013 and May 24, 2013, respectively.

Upon review of the request, supporting documentation, terms and conditions in Licence 2BE-IZO1217, and submissions from interested persons and/or parties, the NWB is satisfied that the activity, as proposed by the Licensee, would not directly or indirectly impact surface and groundwater, which is a requirement under Section 12.1(a), (b) of the *Nunavut Waters and Nunavut Surface Rights Tribunal Act*, and maintain its obligations to adhere to the terms and conditions in licence. The NWB has, therefore, approved the request under motion No. 2013-B1-013, dated June 18, 2013, for an open burning of untreated and unpainted wood materials to be carried out in summer 2013.

P.O. Box 119, Gjoa Haven, NU X0B 1J0, Tel: (867) 360-6338, Fax: (867) 360-6369



P.O. Box 360
Kugluktuk, NU X0B 0B0
Telephone: (867) 982-3310
Fax: (867) 982-3311
www.kitia.ca

Kugluktuk

ᑭᓄᓗᓕᓐᓕᓐ

Bathurst Inlet

Kingaok

ᑭᓄᓐᓕᓐᓕᓐ

Bay Chimo
Umingmaktok

ᑭᓄᓐᓕᓐᓕᓐ

Cambridge Bay

Ikaluktutiak

ᑭᓄᓐᓕᓐᓕᓐ

Gjoa Haven

Okhoktok

ᑭᓄᓐᓕᓐᓕᓐ

Taloyoak

ᑭᓄᓐᓕᓐᓕᓐ

Kugaaruk

ᑭᓄᓐᓕᓐᓕᓐ

INUIT OWNED LAND USE LICENSE

KITIKMEOT INUIT ASSOCIATION

LICENSE NO. KTL306C019

Subject to the Terms and Conditions of this License, authority is hereby granted to:

MMG Resources Inc.

LICENSEE

To proceed with Land Use operation described in the accepted application dated:
01/14/13

Location: Inuit Owned Lands CO-05, CO-40, CO-82

Type of Operation: Drilling (diamond/ice, etc.), Archaeology, Research
(wildlife/fish/birds/marine), Collection of Species

Commencement Date: February 16, 2013

Expiry Date: February 15, 2014

This 4 day of February 2013

Kitikmeot Inuit Association

By

[Signature]
LANDS & ENVIRONMENT

The Licensee acknowledges and agrees to comply with Terms and Conditions of this License.


MMG Resources Inc.

By

AUTHORIZED SIGNATORY

Affiliates: Nunavut Tungavik Inc., Inuit Tapirisat of Canada, Kitikmeot Corporation

Appendix III : Water Usage – Domestic and Industrial

	2013										
	WATER USAGE TRACKING										
	IZOK PROJECT										
		MARCH	APRIL	MAY	JUNE	JULY	AUGUST	SEPTEMBER	TOTAL USAGE		
	CAMP USE (DOMESTIC)	0.0	0.0	0.0	0.0	0.0	69.1	5.7			
	CORE SHACK	0.0	0.0	0.0	0.0	0.0	0.0	0.0			
	DRILL #1	0.0	0.0	0.0	0.0	0.0	962.2	0.0			
	TOTAL						1031.3	5.7	1037.0		

The above table provides a monthly summary of water use measured in M³. Detailed daily figures for each month are provided below.

August[illegible]September[illegible]

Appendix IV : Water Testing Results

Water testing is a requirement associated with winter drilling off of lake ice. No under ice water testing was carried out in 2013

Appendix V : Water Sampling Photos

See above, no water testing was carried out

Appendix VI : Wildlife Sightings

WILDLIFE SIGHTING SHEET - 2014 IZOK PROJECT SITE




Date	Name	Wildlife Observed	Location	Notes
AUG. 4	QUINNAN	42-50 MUSKOK - LOUINGINGIAZING	419323, 4316090	NEAR A17-14-01 DRH
AUG 5	QUINNAN	2X WILLES	IZOK A17-14-01	white / grey in colour
AUG. 28	QUINNAN	35 MUSKOK	13 miles NORTH OF CAMP	
AUG. 27	CHRIS HERNAN	1 WOLF	8 miles EAST CAMP	WHITE
AUG. 13	BACK DRAMSHAW	7 WOLVES	10 miles NORTH OF CAMP	ALL ADULTS / WHITE
AUG. 20	PETER C. TROLE	1 GREY FALCON	HAM LAKE EAST ARM	
AUG. 26	T. TROLE	1 BALD EAGLE	OVER CAMP	BIG ONE
AUG. 20	M. TREKANA	1 MUSKOK + 2 CARIBOU	A17 DRILL SITE	
AUG. 25	C. KATHAK	1 WOLF	IZOK A17-14-01	WHITE
AUG 29	CHRIS DRAMSHAW	2 WEIZEL BEARS	5 mile west 621-14-01	TRAVELING WESTWARD
AUG 28	NATTS HIFT	2 WOLVES	621-14-01	
SEP 4	LEAS & PETER	~30 CARIBOU	SOUTH OF RUMBY	TRAVELING WESTWARD
SEP 5		Greyed goat & 2 cubs.		

Please try to provide as many details as you can - if you saw a cow caribou and a calf, make a note of that. If you saw animal tracks, such as wolverine or bear, that's important information too. The more specific about the location the better (Please ask the camp manager for detailed information about the name of where you were working - ie. Drill 1232 doesn't help us because the drills are moving all the time). Thanks for taking a few moments to write down what you saw.

Appendix VII : Monthly Waste Control Documentation

AUGUST 2014

 Monthly Incineration Tracking Sheet						
	Pacto (LBS)	Kitchen Waste (LBS)	Cardboard (LBS)	Wood (LBS)	Household (LBS)	Initials
01/08/2014						
KG* 02/08/2014	9.5 kg.	17.62 kg.	2.69		6.8 kg	CK KG
03/08/2014	21.42 lbs	24.77 lbs	9.10		33.15	CK
04/08/2014	15.87	41.70 42.59	5.55	84.13	3.48	CK
05/08/2014	18.71	18.63	6.74		29.16	CK
06/08/2014	25.81	38.02	2.57		5.33	CK
07/08/2014	21.01	30.13	39.34		1.91	CK
08/08/2014	17.92	28.94	3.08	97.35	1.27	CK
09/08/2014	22.57	25.74			20.56	CK
10/08/2014	20.52	23.58	4.05		20.15	CK
11/08/2014	27.73	32.25	3.04	64.15		CK
12/08/2014	13.77	25.44			16.33	CK
13/08/2014	25.90	25.04	28.74		11.79	CK
14/08/2014	12.38	20.45			10.03	CK
15/08/2014	24.11	38.27	4.93		4.10	CK
16/08/2014	24.15 47.2	47.15			19.48	CK
17/08/2014	47.20	24.47			12.50	CK
18/08/2014		37.21			16.18	
19/08/2014	19.33	38.55			9.52	
20/08/2014	17.37	35.25	32.09		14.61	
21/08/2014	19.42	31.39			14.08	
22/08/2014	20.78	28.13			16.04	
23/08/2014	15.78	20.28			3.06	
24/08/2014	16.94	48.56			16.46	
25/08/2014	34.19	25.39			24.42	
26/08/2014	15.14	18.07			14.03	
27/08/2014	33.90	72.85	9.76		22.95	
28/08/2014	24.60	64.35	5.30		12.04	KV
29/08/2014	23.73	47.88			12.21	CK
30/08/2014	25.88	36.46			9.65	CK
31/08/2014	29.13	42.68			15.12	

Manifest: 2014-0960

Date: 2014-08-12

Client: MMG

Project: IZOK

Time: 03:30 PM

Carrier: Summit Air

Aircraft: Dornier

Registration: EQW

6	F electrical	Eecol Electric	Izok	Peter	174	IZOK
1	F calling cards	-Unknown-	Reddi Mart	Peter	1	IZOK
1	F box	Cascom	Izok	Peter	10	IZOK

Freight: 87 = 3483

Passengers: 0 = 0

TOTAL: 87 = 3483

Back Haul

Qty.	P/F	Description	Supplier	Reference	Attention	Weight	Destination
1	P	Pierre Berard	Great Slave	Izok	Peter	225	Yellowknife
3	F	recyclables	MMG	Izok	Peter	15	Yellowknife
63	F	pails of mud	MMG	Izok	peter	3,150	Yellowknife
4	F	garbage	MMG	izok	peter	20	Yellowknife
3	F	boxes of waste	MMG	Izok	Peter	40	Yellowknife

Freight: 73 = 3225

Passengers: 1 = 225

TOTAL: 74 = 3450

Comments:

null

Manifest: 2014-0971

Date: 2014-08-19

Client: MMG

Project: IZOK

Time: 08:00 AM

Carrier: Summit Air

Aircraft: Buffalo

Registration: ASV

1	F	Pick up truck and MMG	Peter	Peter	4,500	Yellowknife
4	F	skids of major Major Drilling	Izok	Elwood	1,000	Yellowknife
3	F	fuel kit and ladder GSH	GSH	Peter	100	Yellowknife

Freight: 8 = 5600

Passengers: 0 = 0

TOTAL: 8 = 5600

Comments:

Capt Chris van Durin

Co pilot - Ben Ladell

Manifest: 2014-0978

Date: 2014-08-26

Client: MMG

Project: IZOK

Time: 10:30 AM

Carrier: Summit Air

Aircraft: Dornier

Registration: EQX

Back Haul

Qty.	P/F	Description	Supplier	Reference	Attention	Weight	Destination
1	P	Pat Boyd	Major Drilling	Izok	Elwood	230	Yellowknife
1	P	Mike Taekema	GSH	Izok	GSH	200	Yellowknife
1	P	Zack Crawshaw	GSH	Izok	GSH	200	Yellowknife
1	P	Myles Backer	1984	Izok	Air Canada	260	Yellowknife
3	F	barrels of waste	MMG	Izok	KBL	1,200	Yellowknife
5	F	bags of	MMG	Izok	SPCA	25	Yellowknife
2	F	skids of major	Major Drilling	Izok	Elwood	700	Yellowknife
1	F	Reflex Case	Reflex Instruments	Izok	Peter	30	Yellowknife
1	F	Baggage	-Unknown-	Passengers	Peter	200	Yellowknife
Freight:		12 = 2155	Passengers:		4 = 890	TOTAL:	16 = 3045

Comments:

Capt- Ryan Gilliland
Copilot- Ed Chamberland



11618

Date:	25 Aug 14	Initials:	ty
Charge to:	054		

Description:

dispose of scrap metal
drum containing rebar
disposed @ city dump

Hourly Rate:	Total Hours:	Total Charge:
20	1	20

Appendix VIII : KBL Waste Disposal Certificates



PO Box 1108
Yellowknife, N.W.T. X1A 2N8
Canada

INVOICE

Invoice No.: 3599
Date: 08/27/2014
Ship Date:
Page: 1
Re: Order No. 109

Sold to:

MMG / Minerals and Metals Group
STE 555-999 Canada Place
Vancouver, BC V6E 3E1
Canada

Ship to:

MMG / Minerals and Metals Group
STE 555-999 Canada Place
Vancouver, BC V6E 3E1
Canada

accountspayableamericas@mmg.com

Business No.: 843759747

KBL ENVIRONMENTAL LTD. GST: #843759747

Waste Code	Quantity	Unit	Description	Tax	Unit Price	Amount
	1		DISPOSAL AND/OR RECYCLING OF WASTE RECEIVED ON KBL BOL 4346 DATED AUGUST 6, 2014 IZOK CAMP			
YFLF-D	2	DRUM	FLAMMABLE LIQUIDS - FUEL	G	175.00	350.00
YCGBS-P	1	PAIL	COMPRESSED GAS - BEAR SPRAY	G	120.00	120.00
YPU	1	EACH	PICKUP	G	80.00	80.00
			OUR JOB # K2132			
			Subtotal:			550.00
			G - GST			27.50
			GST			
Shipped By:				Total Amount		577.50
Tracking Number:						
Comment:						
Sold By:						

KBL Environmental LTD.
PO Box 1108
Yellowknife, NT X1A 2N8

NO 4346

Name: MMG - Minerals and Metals Group
Address: STE 555-999 Canada Place,
Vancouver, BC, V6C 3E1
Telephone: 445 7307 Contact: Tim
Generator Pin #: NU6120026 Manifest #: 9602388-8

Name: KBL Environmental
Address: 17 Garrison Road, Teller, AK, 99571
Telephone: (907) 953-5263 Contact: Jeff B
Receiver Pin #: AKR00123 Manifest #:

Name: _____
Address: Izok Camp
Telephone: _____ Contact: _____
Account #: _____ PO #: _____

Name: KBL
Address:
Driver: Josh Unit #: Flat deck
Carrier Pin #: N1600024

PLACARDS REQUIRED BY CARRIER (PER T.D.G REGULATIONS)

Yes <input type="checkbox"/>	No <input type="checkbox"/>	Number Required	Type
------------------------------	-----------------------------	-----------------	------

DG-Dangerous Goods (X-Yes)

****UM-Unit of Measure (L-Litre, K-Kilogram, E-Each)**

TRANSPORT TIME:

General terms and conditions. All wastes must meet the specifications as described on the Customer's Bill of Lading sheet. Wastes that do not meet the profile are subject to rejection at the Receiver site or conditional acceptance at a higher price. Customer acknowledges and accepts these conditions by signing below. Customer agrees to indemnify and save harmless KBL from any and all claims, penalties, forfeitures, and expenses incident thereto, which it may incur as a result of death, bodily injuries to any person, destruction or damage to any property, contamination or any adverse effects on the environment, violation of laws, regulations, or orders, caused in whole or in part by the Customer failure to provide waste which meets the specifications as described on this Bill of Lading.

CONSIGNEE SIGNATURE

ABOVE NAME PRINTED

Goldenrod – Carrier

KBL Environmental LTD.

PO Box 1108
Yellowknife, N.W.T. X1A 2N8
Canada

INVOICE

Invoice No.: 3662
Date: 09/30/2014
Ship Date:
Page: 1
Re: Order No.

Sold to:

MMG / Minerals and Metals Group
STE 555-999 Canada Place
Vancouver, BC V6E 3E1
Canada

Ship to:

MMG / Minerals and Metals Group
STE 555-999 Canada Place
Vancouver, BC V6E 3E1
Canada

accountspayableamericas@mmg.com

Business No.: 843759747

KBL ENVIRONMENTAL LTD. GST: #843759747

Waste Code	Quantity	Unit	Description	Tax	Unit Price	Amount
			DISPOSAL AND/OR RECYCLING OF WASTE RECEIVED ON KBL BOL 4071 DATED SEPT 8/14	G		
YFLF-D	8	DRUM	FLAMMABLE LIQUIDS - FUEL	G	175.00	1,400.00
YWLO-D	4	DRUM	WASTE LEACHATE - OIL	G	95.00	380.00
YNRSSM-D	7	DRUM	NON REGULATED SOLIDS - SCRAP METAL	G	125.00	875.00
YNRSIA-D	1	DRUM	NON REGULATED SOLIDS - INCINERATOR ASH	G	135.00	135.00
YPU	1	EACH	PICKUP AT SUMMIT	G	80.00	80.00
			OUR JOB # K2168			
			Subtotal:			2,870.00
			G - GST			
			GST			143.50
Shipped By:		Tracking Number:				
Comment:					Total Amount	3,013.50
Sold By:						

**PO Box 1108
Yellowknife, NT X1A 2N8**

Sept, 8th, 2014

4071

Telephone: 920-4600 Contact: Tim
Generator Pin #: Manifest #: 9602339-5

Receiver Pin #: 21100173 Manifest #:

Carrier Pin #: NT0006124

Yes <input type="checkbox"/>	No <input type="checkbox"/>	Number Required	Type
------------------------------	-----------------------------	-----------------	------

****UM-Unit of Measure (L-Litre, K-Kilogram, E-Each)**

TRANSPORT TIME:

General Terms and Conditions. All wastes must meet the specifications as described on the Customer's Bill of Lading sheet. Wastes that do not meet the profile are subject to rejection at the Receiver site or conditional acceptance at a higher price. Customer acknowledges and accepts these conditions by signing below. Customer agrees to indemnify and save harmless KBL from any and all claims, penalties, forfeitures, and expenses incident thereto, which it may incur as a result of death, bodily injuries to any person, destruction or damage to any property, contamination or any adverse effects on the environment, violation of laws, regulations, or orders, caused in whole or in part by the Customer failure to provide waste which meets the specifications as described on this Bill of Lading.

ABOVE NAME PRINTED

Goldenrod – Carrier



Certificate of Disposal

Date: September 15, 2014

KBL Job #K2168
Invoice: 3662

KBL Environmental Ltd hereby certifies that the waste shipped from MMG-Izok, on KBL Bill of Lading #4071 and federal manifest 9602339-5 which was received at KBL Environmental Ltd. on September 8, 2014 and has been processed, recycled/disposed of in accordance with all applicable Federal and Territorial /Provincial Regulations.

Generator:
MMG
NUG 1000056

A handwritten signature in black ink, appearing to read "Jeff Bembridge", is written over a horizontal line.

Issued By:
Jeff Bembridge
Operations Manager
KBL Environmental Ltd.
NTR 0000123

PO Box 1108 - 17 Cameron Road - Yellowknife, NT - X1A 2N8



Certificate of Disposal

Date: September 3, 2014

KBL Job #K2104
Invoice: 3550

KBL Environmental Ltd hereby certifies that the waste shipped from MMG - Izok, on KBL Bill of Lading #4272 and Federal Manifest 9602357-7 which was received at KBL Environmental Ltd. on August 26, 2014 and has been processed, recycled/disposed of in accordance with all applicable Federal and Territorial /Provincial Regulations.

Generator:
MMG
NUG 1000056

A handwritten signature in black ink, appearing to read "Jeff Bembridge".

Issued By:
Jeff Bembridge
Operations Manager
KBL Environmental Ltd.
NTR 0000123

PO Box 1108 - 17 Cameron Road - Yellowknife, NT - X1A 2S2



Certificate of Disposal

Date: August 31, 2014

KBL Job #K2132
Invoice: 3559

KBL Environmental Ltd hereby certifies that the waste shipped from MMG-Izok, on KBL Bill of Lading #4346 and Federal Manifest 9602328-8 which was received at KBL Environmental Ltd. on August 6, 2014 and has been processed, recycled/disposed of in accordance with all applicable Federal and Territorial /Provincial Regulations.

Generator:
MMG
NUG 1000056

A handwritten signature in black ink, appearing to read "Jeff Bembridge", is written over the printed name.

Issued By:
Jeff Bembridge
Operations Manager
KBL Environmental Ltd.
NTR 0000123

PO Box 1108 - 17 Cameron Road - Yellowknife, NT - X1A 2N8



Certificate of Disposal

Date: September 3, 2014

KBL Job #K2111
Invoice: 3557

KBL Environmental Ltd hereby certifies that the waste shipped from MMG-Izok, on KBL Bill of Lading #4109 and Federal Manifest 9602352-8 which was received at KBL Environmental Ltd. on August 21, 2014 and has been processed, recycled/disposed of in accordance with all applicable Federal and Territorial /Provincial Regulations.

Generator:
MMG
NUG 1000056

A handwritten signature in black ink, appearing to read "Jeff Bembridge", is written over the printed name.

Issued By:
Jeff Bembridge
Operations Manager
KBL Environmental Ltd.
NTR 0000123

PO Box 1108 - 17 Cameron Road - Yellowknife, NT - X1A 2N8



**WASTE DISPOSAL PLAN
SLAVE PROJECTS**

AMMENDED OCTOBER 2012

**MMG RESOURCES
26 – 1177 W. HASTINGS ST.
VANCOUVER, BC
V6E2K3**

Guidelines for Waste Incineration

1. All waste will be categorized and any materials not in accordance with the Department of Environments Policy “Municipal Solid Wastes Suitable for Open Burning” will be removed from the waste stream. Only kitchen waste, sewage, and untreated wood and paper products are approved for incineration.
2. Kitchen and human waste is to be collected and incinerated on a daily basis. If volumes warrant then twice daily.
3. “wet” biological waste from kitchens or toilet facilities will be mixed in small volumes with more combustible paper and cardboard materials to ensure total elimination during incineration.
4. A suitable temporary storage facility for garbage awaiting incineration is required that is impervious to wildlife and decreases odours.
5. Any recyclable materials (plastic bottles, aluminium cans) will be separated, packaged appropriately for transport and removed from site for handling in Yellowknife.
6. Clearly marked separate containers for easy categorization of refuse is encouraged.
7. Any industrial refuse contaminated with petroleum based products from lubricants, fuels, or additives will be appropriately packaged for transport to Yellowknife and handling by KBL.
8. Any batteries, chemicals, or other waste categorized as dangerous or hazardous goods will be appropriately packaged and transported to Yellowknife for proper handling and disposal KBL.
9. Daily records of waste streaming and incineration will be kept and be available upon request to inspectors.
10. Records will be kept of all refuse shipped to Yellowknife for disposal, including date, volume, and category. Chain of custody and final disposal records will be requested from Expediter and KBL Environmental to fully document waste disposal. Copies of final disposal certificates will be provided to AANDC with annual reports.

Waste handling procedure and incinerators at exploration camp locations will be inspected on a monthly basis and reviewed for adequacy and performance in regards to the waste stream that they handle, with the following specifics in mind:

- Operating temperature and complete incineration of waste.
- Composition of remaining ash
- Containment of liquid waste within combustion chamber and structural integrity of the burn chamber.
- Integrity and proper function of the stack.
- Care and maintenance of incinerator and burner.

- Accuracy of records and reporting of transport and disposal

For further information, Environment Canada's guide to batch incineration should be consulted. A copy of summary information for this document is provided here.

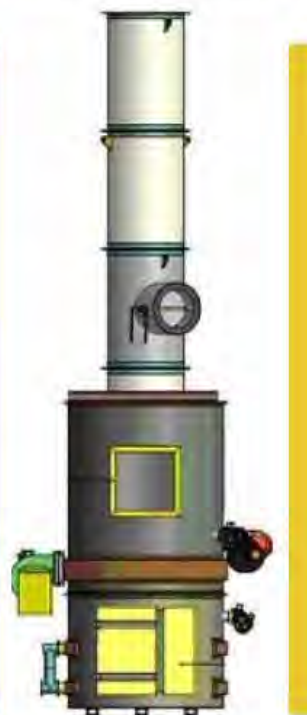


Fact Sheet: Technical Document for Batch Waste Incineration

The *Technical Document for Batch Waste Incineration* provides guidance for owners, operators and regulators on the appropriate incineration technologies and best management practices to minimize releases of toxic substances into the environment.

Six Steps to Better Incineration

- 1 Understand Your Waste Stream
- 2 Select the Appropriate Incinerator (or Evaluate the Existing System)
- 3 Properly Equip and Install the Incinerator
- 4 Operate the Incinerator for Optimum Combustion
- 5 Safely Handle and Dispose of Incinerator Residues
- 6 Maintain Records and Report



For more information, please see the complete document at:
www.ec.gc.ca/gdd-mw/default.asp?lang=En&n=F53EDE13-1

Contact information:
TMB@ec.gc.ca or 819-997-3377

Canada

More Details About the Six-Step Process for Batch Waste Incineration

1

Understand Your Waste Stream

The first step in managing your waste is understanding what the waste is. Perform a waste audit to understand its quantity and composition. Based on the results, you can assess what appropriate disposal options should be undertaken. Remember the “3Rs”: Reduce, Reuse and Recycle.

2

Select the Appropriate Incinerator (or Evaluate the Existing System)

To ensure that a suitable incinerator is chosen, the call for proposals for incinerator manufacturers who want to provide service for you should include specific information on the characteristics of the residual waste stream you need to dispose of. For facilities with existing incinerators, owners/operators should reassess the suitability of the existing system to manage the current waste stream. The recommended configuration is a dual chamber controlled air incinerator.

3

Properly Equip and Install the Incinerator

Make sure that building and equipment considerations are well planned during the design phase, before installing the incinerator.

4

Operate the Incinerator for Optimum Combustion

To ensure optimum combustion conditions, the incinerator must be operating correctly. Proper operation includes separating the waste, weighing it, mixing it for a specified calorific value, and closing the incinerator door once the waste is loaded, and not re-opening it until the burn is complete. Important considerations such as appropriate operator safety training should be completed.

5

Safely Handle and Dispose of Incinerator Residues

Ash from the primary chamber of the incinerator can contain materials that are hazardous to the operator's health and to the environment. Operators should use personal protective equipment when handling this material. The ash should be disposed of at an approved disposal site.

6

Maintain Records and Report

To demonstrate appropriate operation and maintenance of the incinerator, the facility must maintain records and prepare an annual report.

For more information, please see the complete document at:
www.ec.gc.ca/gdd-mw/default.asp?lang=En&n=F53EDE13-1

Contact information:
TMB@ec.gc.ca or 819-997-3377

Cat. No. 1614-17/3-2011F-PDF
ISBN: 978-1-100-17784-7
Photos: © Photos.com - (2011)
For information regarding reproduction rights,
please contact Public Works and Government
Services Canada at 613-996-6886 or at
droitdauteur.copyright@pws-gc.gc.ca
© Her Majesty the Queen in Right of Canada,
represented by the Minister of the Environment, 2011
Aussi disponible en français



CY-2020-FA "D"

[Photo: Diesel fired unit]

- **Built In Safety Features**
- **Readily Transportable**
- **Economical Operation**
- **Clean Burning**

Designed for Waste Disposal

Primary Chamber Volume / Heat Release

- 0.5 m³ / 300 MJ/h

Waste Types / Approx. Capacity

- Type No. 1: 20* kg/h
- Type No. 2: 30* kg/h
- Type No. 3: 50* kg/h

(* based on 6 loads/h)

Power Requirements

- 115 volts 60 cycle single phase.

Stack

- 14 gauge stainless steel.
- 33 cm diameter.
- 3 m high.
- c/w stainless steel spark arrester and a hinged base plate for transport.

Casing

- 12 gauge steel.
- Lining: high heat duty castable refractory over high temperature insulation.

Hearth

- Refractory hearth over 6.35 mm steel base.

Doors

- 6.35 mm steel plate c/w heavy duty blade latch.
- Charging Door
 - o 46 cm x 61 cm clear opening.
 - o Refractory lined over steel plate.
- Ash Door
 - o 46 cm x 30 cm clear opening.
 - o Refractory lined over steel plate.

Air Supply

- Forced air fan c/w duct to primary air jets and to secondary over-fire air jets.

Timers

- Cycle timer interconnected to air supply fan and gun type burner enclosed in burner housing.

Burners

- 490,000 Btu gun type primary burner. The gun burner is enclosed in protective plate steel housing.
- 280,000 Btu gun type burner in the secondary combustion chamber.

Fuel Supply Options:

- Natural gas "N".
- LPG "LPG".
- Diesel "D" – requires a 450 litre fuel storage tank c/w filter and flexible hose type connection.

Transporter

- Incinerator and fuel storage mounted on skid type frame 365 cm long x 152 cm wide.
- Height: 2.64 m, with stack folded.
- Constructed of 15 cm I Beam c/w bumper posts.

Weight

- 2268 kg.

Options

- LPG, fired burner.
- Diesel fired burner.
- 2.3 m Electric power cord.
- Stack winch.
- 1.3 m³ model CY-2050-FA.
- Cold climate assembly.

MANUFACTURED BY:

DISTRIBUTED BY:



Environmental Services Inc.
20204 – 110 Avenue, Edmonton, AB Canada T5S 1X8
Phone: (780) 447-5052 Fax: (780) 447-4912
E-MAIL: info@westlandenvironmental.com

Appendix X : Spill Contingency Plan

The complete Spill Contingency Plan is provided in digital format on the CD that accompanies this report.

Appendix XI : Abandonment and Restoration Plan

The complete Abandonment and Restoration Plan is provided in digital format on the CD that accompanies this report.

Appendix Appendix IX : Photos Izok

Izok Camp on Ham Lake – 2014 site photo



Looking to the West over Ham Lake. Airstrip is to left of photo. Blue trailers of the historic Inmet Camp are on the right of photo.



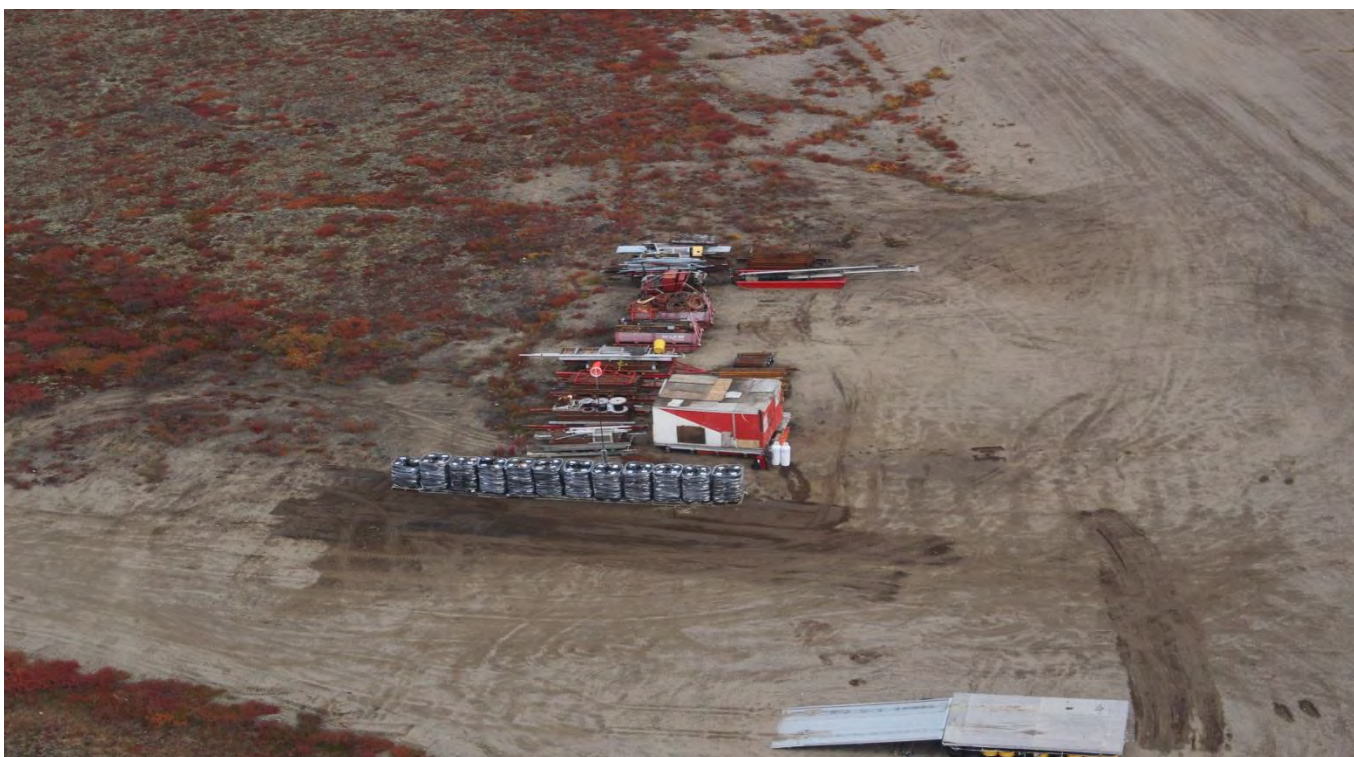
Bulk fuel tanks



Drum fuel storage area



Historic bulk fuel tanks and non-servicing heavy equipment ready for backhaul



Drill equipment, scrap steel, and ash drums ready for backhaul at airstrip

