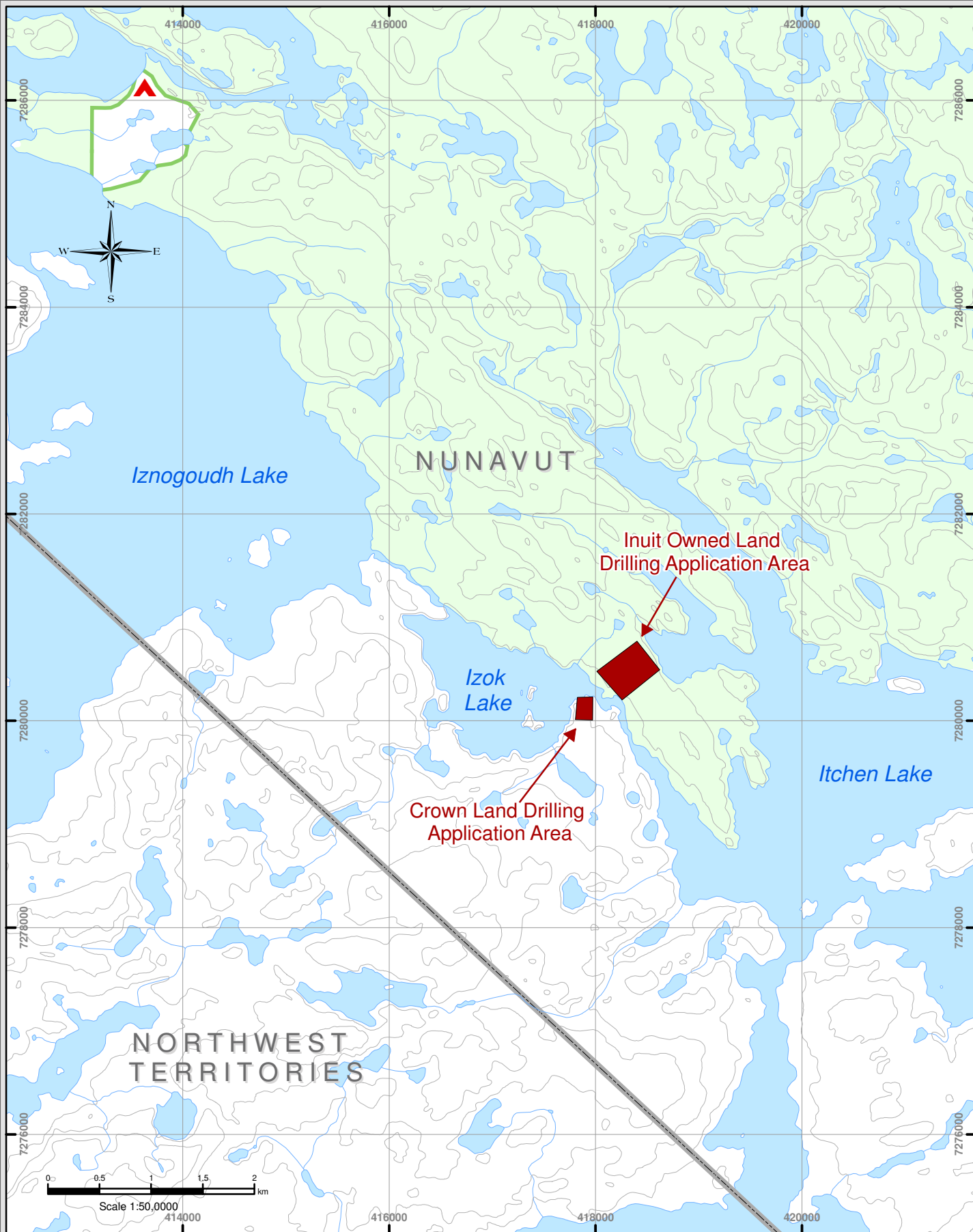









File: P61013_C1_Fig3IzokExplor_29May2006.mxd



Legend

- | | | | |
|---|---------------------|---|---------------|
|  | Camp |  | Contour (20m) |
|  | Planned Drill Areas |  | Watercourse |
|  | Inuit Owned Lands |  | Waterbody |
|  | Surface Rights Only | | |



Izok Property Exploration Locations

References:

National Topographic Database (NTDB) compiled by the Government of Canada, Natural Resources Canada (NRCan) at 1:50,000.
Inuit Owned Lands compiled by Nunavut Tunngavik Incorporated.
Camp location and planned drill areas provided by Wolf Den Resources Inc.

Projection: UTM Zone 12 NAD 83
Revision: 0
Date: May 31, 2006

 Gartner Lee

Map: **3**