



Kahuna Gold Project
2019 Annual Report
Solstice Gold Corporation

KIA Land Use Licence Number: KVL318B01
KIA Land Use Licence Number: KVRW18F02
CIRNAC Land Use Permit Number: N2018C0020
Nunavut Water Board: 2BE-KGP1823

Submitted: March 27, 2020

Submitted to: NWB

Prepared by: Ian Russell, VP Exploration

Solstice Gold Corporation

Suite 1020-800 West Pender Street

Vancouver, BC, V6C 2V6

Table of Contents

1	Summary	3
2	Corporate Background.....	3
3	Property Description & Location	3
4	2019 Work Completed.....	5
4.1	Prospecting & Rock Sampling	5
4.2	Drilling Program	6
5	Wildlife Observational Log.....	8
6	Environmental and Wildlife Management Plan	13
7	Land Use Considerations.....	13
8	Waste Management	14
9	Fuel Inventory.....	14
10	Flight Summary.....	14
11	Socio-Economic Impacts & Benefits	15
12	Archaeology, Traditional Knowledge.....	15
13	Community Consultation	16

List of Figures

Figure 1: Kahuna Property Location and land tenure.....	4
Figure 2: 2019 Rock Sample Locations	6
Figure 3: Regional map showing the location of the drill holes (red dots) completed during 2019.	7
Figure 4: Detailed map showing drill holes (Red Dots) and drill hole traces. Note that IOL surface rights are presented as a grey hashmark.	8

List of Tables

Table 1: 2019 Solstice Gold Land Use Permits and Licences	3
Table 2: 2019 Wildlife Observational Log.....	9
Table 3: Helicopter Flight Summary	15

Appendices

- Appendix A: 2019 Land Tenure
- Appendix B: 2019 Drill Site Coordinates and Reclamation Photos
- Appendix C: 2019 Water Use Record
- Appendix D: 2019 Contractor Services
- Appendix E: 2019 Community Consultation Log

1 Summary

The Kahuna Property is located between the communities of Rankin Inlet (Kangiqliniq) and Chesterfield Inlet (Igluigaarjuk) in the Kivalliq Region of Nunavut (Figure 1). The property hosts known gold and diamond occurrences and comprises 74 mineral claims (100% Solstice Gold Corp) and 19 (50% Solstice Gold Corp & 50% Dunnedin Ventures Inc.) encompassing 928 Km².

Exploration activities on the Kahuna Property are authorized by CIRNAC Land Use Permit N2018C0020, KIA Land Use Licences KVL318B01/KVRW18F02 and NWB Water Licence 2BE-KGP1823. Exploration activities conducted in 2019 included geological mapping, prospecting, rock sampling, and a six hole drilling program.

The 2019 exploration program was based out of Rankin Inlet for the duration of the program, from early July until the end of September.

2 Corporate Background

Solstice Gold Corporation is a Vancouver-based, gold-focussed exploration company engaged in the exploration of its 928 km² (100%) district scale Kahuna Project and certain other rights covering an adjacent 805 km². Kahuna is located in Nunavut, Canada approximately 26 km from Rankin Inlet and approximately 7 km from the Meliadine gold deposits owned by Agnico-Eagle Mines Ltd Solstice Gold Corp.

3 Property Description & Location

The property currently covers 74 mineral claims (100% Solstice Gold Corp.) and 19 (50% Solstice Gold Corp. & 50% Dunnedin Ventures Inc.) encompassing 928 Km². (Appendix A). Claims are located on NTS map sheets 0550/02, 0550/03, 0550/04, 0550/05, 0550/06, 0550/07, 055J/13, 055J/14, 055N/01 and 055N/08 (Figure 1). The southern boundary of the property adjoins the north boundary of subsurface Inuit Owned Land (IOL) parcel RI-01, approximately 25 kilometres northeast of Rankin Inlet. The northeast and northwest corners of the property are located approximately 10 kilometres southeast and approximately 75 kilometres west of Chesterfield Inlet, respectively. The Property extends north, south, east and west between Latitudes 62°58' and 63°19' North and Longitudes 90°44' and 92°13' West (UTM coordinates: 6,983,000mN to 7,023,000mN and 539,000mE to 614,000mE, NAD83, Zone 15). A total of 40 mineral claims have surface rights that are within, or partially within, the boundaries of surface Inuit Owned Land parcel CI-15.

Permits and licences enabling exploration work to be conducted on the property have been issued by the Kivalliq Inuit Association (KIA) for parts of the property covering Inuit Owned Lands (IOL), by Crown Indigenous Relations and Northern Affairs Canada (CIRNAC) for Crown Lands and by the Nunavut Water Board (NWB). See Table 1 for a list of active permits and licences issued for lands that comprise the Kahuna Property. Copies of the Kahuna Property permits and licences and the terms and conditions thereof, are available at the site office during operations.

TABLE 1: 2019 SOLSTICE GOLD LAND USE PERMITS AND LICENCES

Issuing/Screening Agency	Type	Date Issued	File Number
KIA	Land Use Licence	February 27, 2019	KVL318B01
KIA	Kahuna Winter Road	March 12, 2019	KVRW18F02
CIRNAC	Land Use Permit	January 14, 2019	N2018C0020
NWB	Water Licence	December 17, 2019	2BE-KGP1823

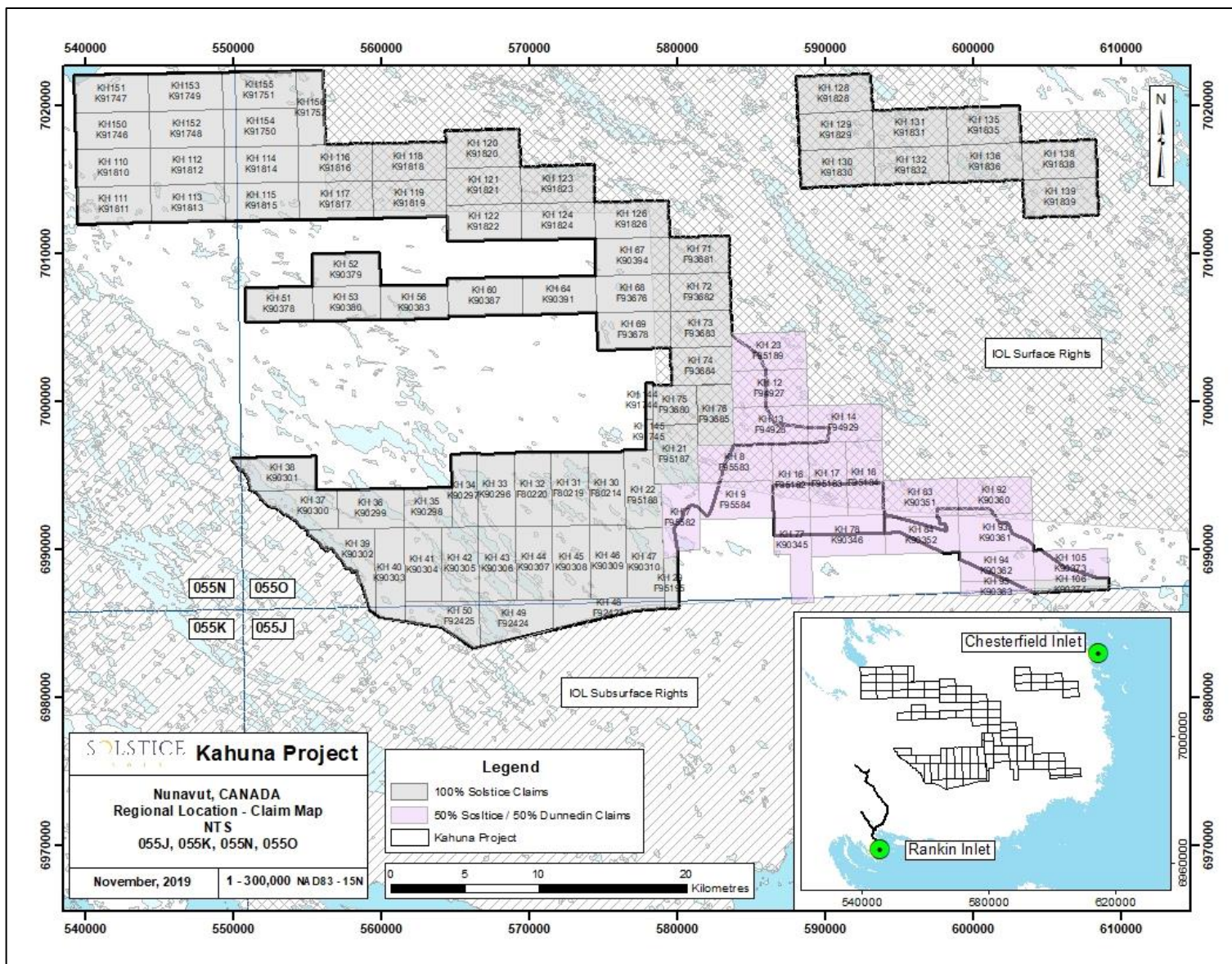


FIGURE 1: KAHUNA PROPERTY LOCATION AND LAND TENURE.

4 2019 Work Completed

Exploration activities conducted in 2019 included geological mapping, prospecting, rock sampling, and a six hole drilling program.

4.1 Prospecting & Rock Sampling

A total of 185 rock samples were collected during a geological mapping, prospecting and rock sampling program during the 2019 exploration program (Figure 2). The helicopter supported sampling program, based out of Rankin Inlet, was conducted between June 25th and July 25th, 2019. The prospecting and sampling crew consisted of up to 5 geologists and 1 wildlife monitor.

Rock samples were collected using a rock hammer or geotuls when mineralization and/or favourable alteration was identified during prospecting. Approximately 1-3 kg of rock material is collected for assay and placed in a sample bag. Notes are taken at each sample site that include sample number, location, and geological characteristics.

Samples were shipped to Activation Laboratories (Actlabs) in Thunder Bay, Ontario for multi-element geochemical analysis and gold fire assays.

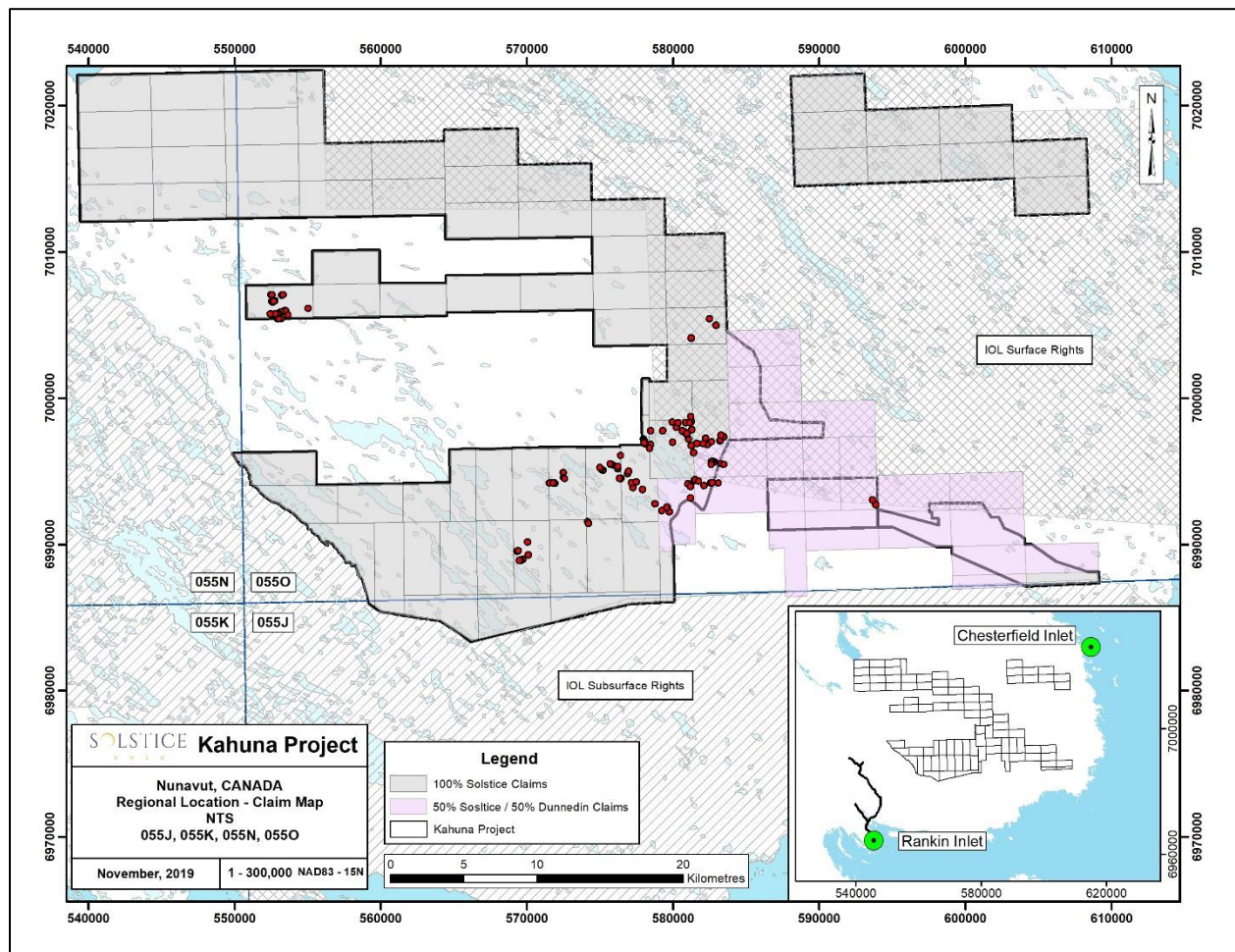


FIGURE 2: 2019 ROCK SAMPLE LOCATIONS

4.2 Drilling Program

Solstice Gold Corp. contracted Major Drilling Group International Inc. to conduct a diamond drilling program on the Kahuna Property in 2019. A total of 1442 metres in 6 holes were drilled between August 5th and September 20th, 2019 (Figure 3 & Figure 4).

The diamond drill was mobilized by helicopter from Rankin Inlet to the first drill collar and then subsequently moved to each drill location by helicopter. During the process of the drilling program, all holes were completed from temporary timber platforms with all required environmental containment utilized during the drill process. During the drilling, NQ core is collected in wooden boxes and brought back to the logging facility in Rankin Inlet at the beginning and end of each day. All core from this drilling program is stored at a facility in Rankin Inlet. No core was left in the field. The drilling process takes place on a 24 hr, continuous basis. During the program, numerous days were lost due to inclement weather. During these times, no drilling took place, and as such, no water was utilized on these days. As outlined in Water Licence No. 2BE-KGP1823, the maximum allowed water consumption for drilling purposes, per day, is 200 cubic metres. At no time did water consumption exceed this amount, with a maximum daily consumption of 99.4 cubic metres and a minimum of 0 cubic metres. Appendix C presents the water consumption during the drilling program.

All drill crew are equipped with all required PPE's. A mobile safety shelter equipped with a heater, sleeping bags, sleeping pads, emergency food and water is set up at each drill site in case of emergency.

As defined in Water Licence No. 2BE-KGP1823, no drilling took place within 31 metres of the ordinary high water mark of any water body. All cuttings related to the drilling process were contained and stored in natural depressions outside the required 31 metres from the ordinary high water mark of any waterbody. As is standard industry practice, all fuels were contained in temporary containment berms at each drill site during the drilling process. At no point during the drilling program did any spills occur and there were no incidents of water flow from the drilling process entering any water bodies. Following the completion of each drill hole, the drill site is remediated, with the removal of all material at the location, with the exception of holes that drill casing was left in the ground. All drill casing was cut down to ground level and site photos collected. No artesian flow was observed at any of the completed drill holes.

Drill hole coordinates and reclamation photos are included in Appendix B, respectively.

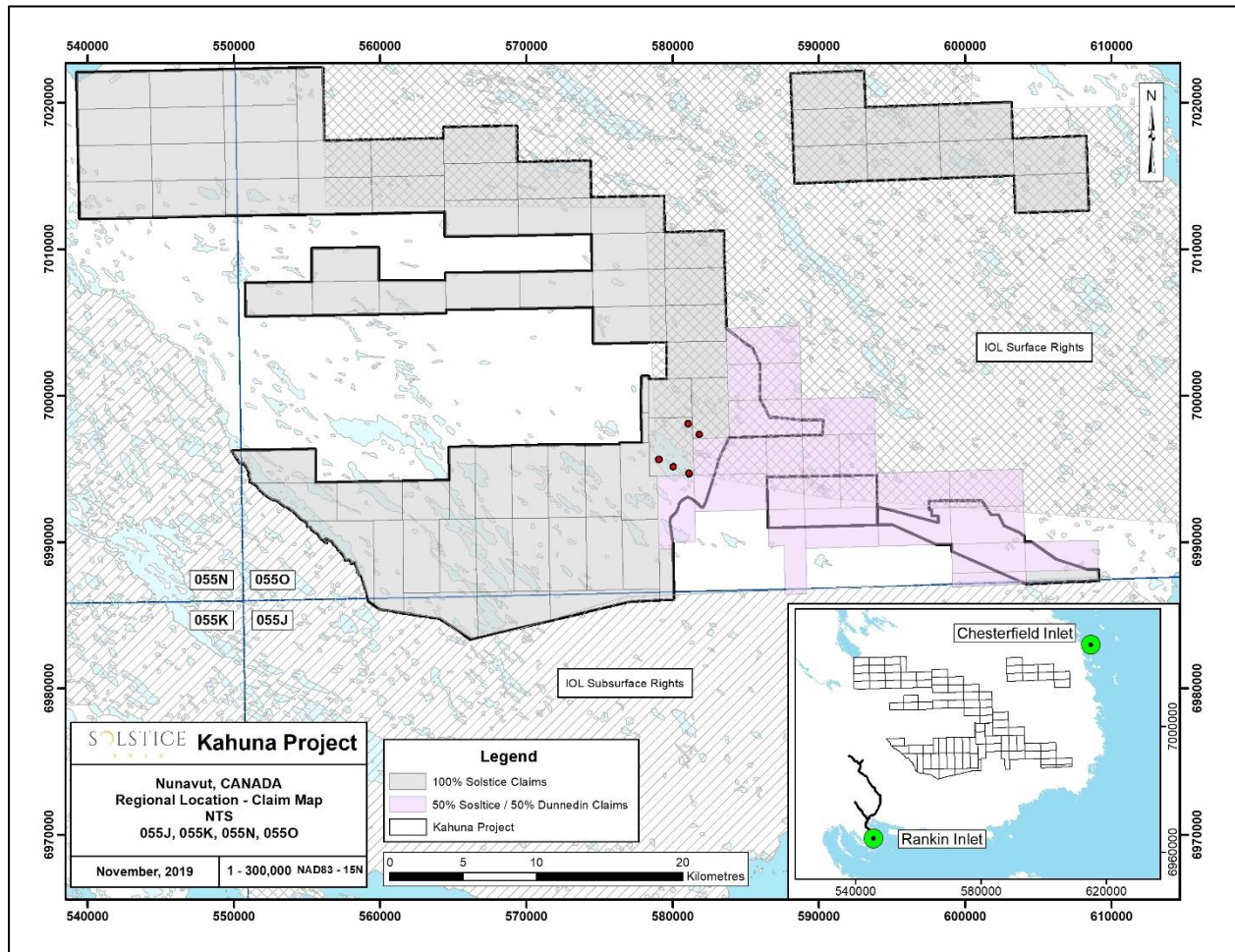


FIGURE 3: REGIONAL MAP SHOWING THE LOCATION OF THE DRILL HOLES (RED DOTS) COMPLETED DURING 2019.

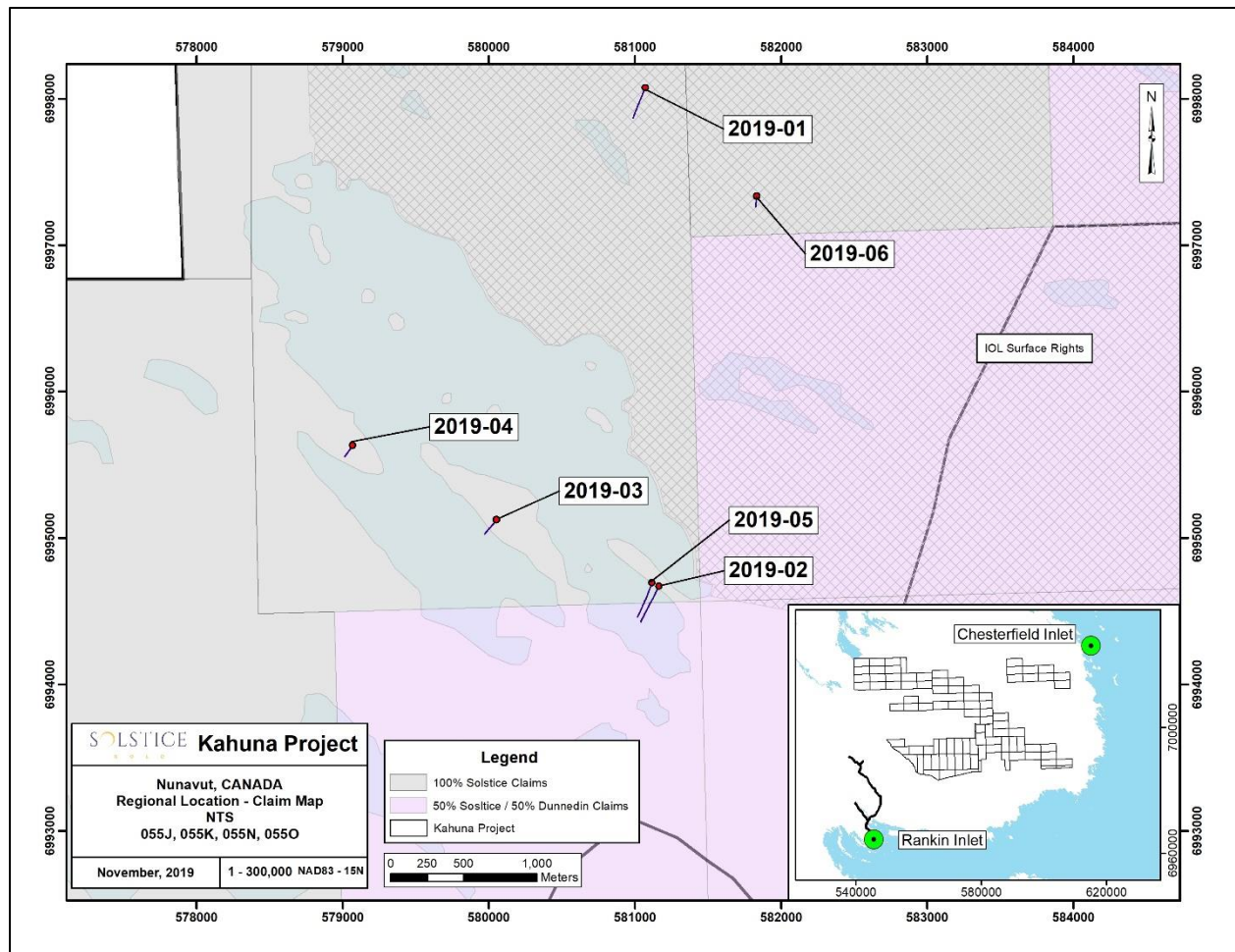


FIGURE 4: DETAILED MAP SHOWING DRILL HOLES (RED DOTS) AND DRILL HOLE TRACES. NOTE THAT IOL SURFACE RIGHTS ARE PRESENTED AS A GREY HASHMARK.

5 Wildlife Observational Log

The 2019 wildlife program consisted of logging incidental observations of all wildlife encountered by designated wildlife monitors and field staff who noted any listed species at risk or high priority VEC (valued ecosystem components) known to occur in the study area.

Wildlife incidents, should they occur, are to be reported immediately to the KIA and to the GN Wildlife Biologists. There were no wildlife incidents reported in 2019.

A summary of the wildlife incidental observations reported in 2019 is as follows:

TABLE 2: 2019 WILDLIFE OBSERVATIONAL LOG

Date	Time	Species	Number	Age	Gender	Brief Description of Wildlife Activity	Notes/Action Taken To Avoid Wildlife	Easting (Nad83 Zone 15)	Northing (Nad83 Zone 15)	Monitor
8-May-19		Ptarmagan	5					575812	6990853	IR/DH
May			6							IR/DH
May	9:30:00 AM	Wolverine	1			Fresh wolverine tracks on winter trail on the way out to camp overland during spring empty fuel drum backhaul.	Tracks noted. No animals encountered.	563736	6982872	IR/DH
27-Jun-19	8:00:00 AM	Caribou	approx 4000?			Left airport in helicopter from Rankin and flying NE to property. No caribou observed until 6-8 km out. Small groups of 20-100, but off in distance groups of 100-1000.	Helicopter maintained 1500 feet elevation and immediately returned to Rankin. (Project managers visited HTO/COs in morning, did not go to field. Communicated with Mine, GTO, Jeff at KIA regarding active migration north of town).			NM

Date	Time	Species	Number	Age	Gender	Brief Description of Wildlife Activity	Notes/Action Taken To Avoid Wildlife	Easting (Nad83 Zone 15)	Northing (Nad83 Zone 15)	Monitor
29-Jul-19	8:30:00 AM	Caribou	50-200			Observed from helicopter at 1500 feet altitude. Large isolated groups in distance north of Solstice Camp to Shear Camp of 50-200 animals. Observed from location of Shear camp two groups of 50-75 animals 5 km to the northeast of Josephine Lake passing to the North.	Remained at elevation above 1500 feet and avoided caribou in flight path.			NM
30-Jun-19	11:00:00 AM	Caribou	20-50 and 100-1000			Observed from helicopter at 1500 feet altitude. From Rankin Inlet heading towards camp, no caribou observed for 8 km, but then within 7 km of camp small groups of 20-30 caribou observed. At camp off in distance to the north larger groups observed of 100, up to 1000 total.	Helicopter and crew returned to Rankin Inlet at high flight elevation.			NM
7-Jul-19	8:30:00 AM	Caribou	10			Heading west toward Meliadine Mine	Observed and left alone	577535	6993522	EA

Date	Time	Species	Number	Age	Gender	Brief Description of Wildlife Activity	Notes/Action Taken To Avoid Wildlife	Easting (Nad83 Zone 15)	Northing (Nad83 Zone 15)	Monitor
7-Jul-19	2:00:00 PM	2 flocks of snow geese	40			2 flocks flying NNE	None required	575399	6996608	TB
10-Jul-19	12:30:00 PM	2 lone Caribou	2			Two lone caribou about 500 metres apart, both grazing, closest one spotted us traversing while mapping and briefly lifted its head (approx 50 m away) and then went back to grazing.	Two geologists avoided and headed off the other way.	570065	6990155	TB/IR
13-Jul-19	8:00:00 AM	Muskox	9			Observed at a distance from the helicopter flying from Rankin to property claims.	Remained at approx 1500 feet altitude, muskox not disturbed.	560646	6991484	TB/IR/ZK and pilot
13-Jul-19	4:00:00 PM	Caribou	60			Approximately 60 caribou observed flying from property to Rankin heading east.	Helicopter maintained elevation of 1500 feet and continued to Rankin. Caribou were undisturbed.	556894	6987562	TB/IR/ZK and pilot
15-Jul-19	midday	Caribou	150			Observed by lone geologist in the distance.	Caribou undisturbed - geologist walked the other way	552590	7005865	SB
18-Jul-19	9:00:00 AM	Caribou	1	baby	male	Observed a deceased caribou	Left alone, no apparent animal attack, broken bones or cause of death.	592160	6993920	EA/TB/IR

Date	Time	Species	Number	Age	Gender	Brief Description of Wildlife Activity	Notes/Action Taken To Avoid Wildlife	Easting (Nad83 Zone 15)	Northing (Nad83 Zone 15)	Monitor
22-Jul-19	10:00:00 AM	Caribou	1	adult	male	One large lone male lying on top of ridge in wind.	Left alone so as not to disturb (buggy day and lying in wind on ridgetop)	582750	6994172	TB/IR
21-Aug-19	2:00:00 PM	Polar Bear	1	adult	male	Lounging by lakeshore, occasionally swimming. Approximately 2.7 km northwest of drill location. Remained in same location for following 5 days.	Monitored from a distance with binoculars; healthy looking, lounging and swimming. Was not approached by humans or helicopter. Eventually wandered north to northwest (further inland).	579838	6997059	Drill crew, pilot and IR.

6 Environmental and Wildlife Management Plan

All Solstice personnel, contractors, consultants and visitors to the property are subject to a property orientation upon arriving in Rankin Inlet. During the project orientation new personnel are informed and made aware of Solstices Environmental and Wildlife Management Plan and the terms and conditions of Solstices land use permits and licences. It is Solstice's corporate policy's to respect the land, water and local wildlife and new personnel are instructed to make all efforts to avoid, mitigate and minimize any impacts to the environment and wildlife while working in the project area.

As per Solstice's permits and licences, in the event that caribou cows and calves are present, Solstice will suspend overflights by helicopters at any altitude of less than 610 metres above ground level. Low level flights were kept to a minimum in 2019. Helicopter flights were detoured to avoid caribou when present and ground operations were conducted in areas where animals were not observed. Solstice suspended operations for approximately 4 days on between June 27 and July 2nd when a large migrating caribou herd was observed in the area of planned exploration work.

One wildlife monitor was hired from Chesterfield Inlet over the course of the 2019 exploration program. The Wildlife monitor was responsible for recording wildlife observations and carried firearms as a safety precaution in the event of a wildlife incident. There were no wildlife incidents reported in 2019.

Mitigation measures were found to be effective during operational activities and no adjustments are recommended at this time.

7 Land Use Considerations

Solstice has a policy of progressive reclamation of drill set-ups during drilling. Following the completion of each drill hole, the drill site is remediated, with the removal of all material at the location, with the exception of holes that drill casing was left in the ground. All drill casing was cut down to ground level and site photos collected. No artesian flow was observed at any of the completed drill holes.

Photographs from all reclaimed drill sites from 2019 are included in Appendix B.

All sampling activities conducted during the 2019 exploration program are considered low-impact, and were conducted by crews on foot with negligible surface disturbance.

Water and aquatic life are protected. Waterlines for drilling are properly placed to minimize disturbance to the shoreline and substrate and are screened in accordance with the "Freshwater Intake End-of-Pipe Screen Guideline" prepared by the Department of Fisheries and Oceans.

Water use was recorded during the drilling program and is presented in appendix C.

8 Waste Management

During the 2019 exploration program, minimal waste was produced. The exploration crew was based out of Rankin Inlet and were flown to and from the field each day. Any and all waste produced during the program was brought back to Rankin Inlet on a daily basis and properly disposed of. No waste material has been left in the field, or at any drill site.

9 Fuel Inventory

Solstice is permitted to store up to 300 drums of fuel, located adjacent to the “Kahuna Camp”. The camp is located at 575940E/ 6990898N, (NAD83 Zone 15) on Mineral Claim K90309. The Kahuna Camp is currently authorized under CIRNAC LUP N2015C0019 and NWB water licence 2BE-KDP1722, held by Dunnedin Ventures Inc.

During the 2019 exploration program, Solstice did not install their permitted fuel cache and no fuel is stored on the property. All jet fuel required to operate the helicopters was sourced from bulk storage facilities in Rankin Inlet. All diesel fuel required for the drilling program was flown by helicopter from Rankin Inlet. Temporary supply caches of less than 8 drums were located at individual drill site locations. Secondary containment systems were used at these temporary cache locations. At no time during the exploration programs were there any spills. All empty drums were returned to Rankin Inlet and re-used as required during the drilling program. At the completion of the program, all of the fuel drums were returned to Rankin Inlet where they will be shipped south and disposed of by an accredited facility.

10 Flight Summary

The 2019 exploration program on the Kahuna Property was helicopter supported.

Helicopters were contracted from Custom Helicopters out of St. Andrews, Manitoba. Between June 27th and September 20th, a total of 222 hours were flown. Three different helicopters were used to support the exploration activities over the course of the program. Helicopters were swapped out for maintenance purposes.

Operations for the duration of the summer were based out of Rankin Inlet.

Table 3: Helicopter Flight Summary

Month	Hours	Type
June	2.3	Bell Long Ranger
July	45.6	Bell Long Ranger
August	105.6	Astar B2
September	68.5	Astar B2
TOTAL	222	

All helicopters utilized during the 2019 program were equipped with on board satellite tracking systems that record locational coordinates at 2 to 4 minute intervals.

11 Socio-Economic Impacts & Benefits

Solstice Gold Corp. has committed to hiring local wildlife monitors from Chesterfield Inlet. The company hired one wildlife monitor from Chesterfield Inlet for the duration of the 2019 field program. The wildlife monitor has been working with Solstice for two seasons now. Solstice procures goods and services locally in Rankin Inlet and utilizes northern businesses wherever available. A list of contractors whose services were utilized in 2019 is provided in Appendix F.

12 Archaeology, Traditional Knowledge

No work will occur in any area where a known archeological site has been located. If any employee or consultant finds an archeological site, work must cease immediately, the GPS coordinates are recorded and the finding is reported immediately to the Project Manager who will report its location to the Department of Culture and Heritage (Government of Nunavut), the Land Administration Division at CIRNAC and KIA. Handling of any archeological artifact is strictly prohibited.

Prior archeological work, carried out by previous land holders Dunnedin Ventures Inc. is summarized below. Prior to embarking on exploration activities, Dunnedin contracted Golder Associates (Nuqsana Golder) to conduct an Archaeological Reconnaissance Study over selected exploration areas on the Kahuna Property. A summary report was received on September 22, 2016. The complete report was submitted to GN Department of Culture and Heritage in March 2017.

In June 2018, Dunnedin Ventures contracted Golder Associates to conduct an archaeological reconnaissance and inventory program on the Kahuna Property. Field work was completed under Class 2 Nunavut Territory Archaeologist Permit No. 2018-13A led by Patrick Young of Golder with the assistance of two employees from Chesterfield Inlet. The following is a non-technical summary from Mr. Young.

The objective of the 2018 investigation was to assess the temporary field camp used for exploration activities, as well as areas identified for exploratory drilling. The archaeological investigation consisted of a combination of low-level helicopter reconnaissance, followed by a pedestrian survey of select high potential landforms within the general project area. This included a prominent esker stretching southeast of Josephine Lake and paralleling Josephine River northeast of the field camp, as well as other esker landforms located southwest of camp.

Over the course of the three-day field program, 15 new archaeological sites were recorded. No sites were identified in conflict with the field camp. An isolated tent ring approximately 250 m west of the camp was identified north of the camp esker and will be avoided. Nine sites were identified along the Josephine River esker, and five sites were identified on smaller eskers to the southwest of camp.

The sites were typical of late Thule or Caribou Inuit camping and hunting activities. A total of 36 stone features were identified at the sites including 24 tent rings/dwellings, 6 caches, 4 hunting blinds, 1 hearth and 1 inuksuk. No diagnostic artifacts were observed and no artifacts were collected.

During the summer exploration program of 2019, Solstice contracted Golder Associates (Nuqsana Golder) to conduct an Archaeological Reconnaissance Study over specific exploration drill targets. Building from the previous programs completed in 2016 and 2018, and carried out by the previous lead, Patrick Young of Golder, two days were spent investigating specific drill targets. The archaeological investigation consisted of a combination of low-level helicopter reconnaissance, followed by a pedestrian survey of select high potential landforms within the general project area. During the process of the investigation, no sites were identified at the proposed drill collar locations. As required under Solstice's Archaeological permit, Nuqsana Golder will file a final report on the work with the Government of Nunavut, relating to this 2019 study.

The coordinates of each historically documented site and feature will be incorporated into future project planning by Solstice to enable appropriate management and avoidance of known archaeological sites during exploration activities. Future Archaeological studies will be carried out as required.

13 Community Consultation

The company is committed to consulting with local residents and conducts regular visits to Rankin Inlet and Chesterfield Inlet to discuss available Inuit Qaujimajatuqangit, the exploration program and any potential concerns the communities may have. Meetings were conducted in 2019 to discuss Solstice's 2019 exploration program, and plans for upcoming work.

Appendix E summarizes the community consultation conducted on the property in 2019.

Appendix A

2019 Land Tenure

Claim Name	Claim Number	Area (Ha)	Issue Date	Anniversary Date*	Owner	Status
KH 7	F95582	1149.5	12-Aug-14	12-Aug-24	Solstice (50%) Dunnedin (50%)	ACTIVE
KH 8	F95583	1250	12-Aug-14	12-Aug-24	Solstice (50%) Dunnedin (50%)	ACTIVE
KH 9	F95584	1250	12-Aug-14	12-Aug-24	Solstice (50%) Dunnedin (50%)	ACTIVE
KH 12	F94927	1250	3-Mar-15	3-Mar-25	Solstice (50%) Dunnedin (50%)	ACTIVE
KH 13	F94928	1250	3-Mar-15	3-Mar-25	Solstice (50%) Dunnedin (50%)	ACTIVE
KH 14	F94929	1250	3-Mar-15	3-Mar-20	Solstice (50%) Dunnedin (50%)	ACTIVE
KH 16	F95182	1250	3-Mar-15	3-Mar-25	Solstice (50%) Dunnedin (50%)	ACTIVE
KH 17	F95183	1250	3-Mar-15	3-Mar-25	Solstice (50%) Dunnedin (50%)	ACTIVE
KH 18	F95184	1250	3-Mar-15	3-Mar-25	Solstice (50%) Dunnedin (50%)	ACTIVE
KH 23	F95189	1250	3-Mar-15	3-Mar-21	Solstice (50%) Dunnedin (50%)	ACTIVE
KH 77	K90345	1076.9	14-Dec-16	14-Dec-21	Solstice (50%) Dunnedin (50%)	ACTIVE
KH 78	K90346	1250	14-Dec-16	14-Dec-26	Solstice (50%) Dunnedin (50%)	ACTIVE
KH 83	K90351	1250	14-Dec-16	14-Dec-19	Solstice (50%) Dunnedin (50%)	ACTIVE
KH 84	K90352	1250	14-Dec-16	14-Dec-18	Solstice (50%) Dunnedin (50%)	ACTIVE
KH 92	K90360	1156.9	14-Dec-16	14-Dec-20	Solstice (50%) Dunnedin (50%)	ACTIVE
KH 93	K90361	1250	14-Dec-16	14-Dec-18	Solstice (50%) Dunnedin (50%)	ACTIVE
KH 94	K90362	1000	14-Dec-16	14-Dec-18	Solstice (50%) Dunnedin (50%)	ACTIVE
KH 95	K90363	447.7	14-Dec-16	14-Dec-19	Solstice (50%) Dunnedin (50%)	ACTIVE
KH 105	K90373	1000	14-Dec-16	14-Dec-18	Solstice (50%) Dunnedin (50%)	ACTIVE
KH 21	F95187	1195.9	3-Mar-15	3-Mar-25	Solstice Gold Corp. (100%)	ACTIVE
KH 22	F95188	1127.3	3-Mar-15	3-Mar-25	Solstice Gold Corp. (100%)	ACTIVE
KH 29	F95195	304.5	3-Mar-15	3-Mar-25	Solstice Gold Corp. (100%)	ACTIVE
KH 30	F80214	1230.4	30-Aug-16	30-Aug-18	Solstice Gold Corp. (100%)	ACTIVE
KH 31	F80219	1246.6	30-Aug-16	30-Aug-18	Solstice Gold Corp. (100%)	ACTIVE
KH 32	F80220	1245.5	30-Aug-16	30-Aug-18	Solstice Gold Corp. (100%)	ACTIVE
KH 33	K90296	1245.4	30-Aug-16	30-Aug-18	Solstice Gold Corp. (100%)	ACTIVE
KH 34	K90297	878.1	30-Aug-16	30-Aug-18	Solstice Gold Corp. (100%)	ACTIVE
KH 35	K90298	867.3	30-Aug-16	30-Aug-18	Solstice Gold Corp. (100%)	ACTIVE
KH 36	K90299	1201.1	30-Aug-16	30-Aug-18	Solstice Gold Corp. (100%)	ACTIVE
KH 37	K90300	1077.3	30-Aug-16	30-Aug-18	Solstice Gold Corp. (100%)	ACTIVE
KH 38	K90301	1122.9	30-Aug-16	30-Aug-18	Solstice Gold Corp. (100%)	ACTIVE
KH 39	K90302	1164.9	30-Aug-16	30-Aug-18	Solstice Gold Corp. (100%)	ACTIVE
KH 40	K90303	1232.4	30-Aug-16	30-Aug-18	Solstice Gold Corp. (100%)	ACTIVE
KH 41	K90304	1250	30-Aug-16	30-Aug-18	Solstice Gold Corp. (100%)	ACTIVE
KH 42	K90305	1250	30-Aug-16	30-Aug-18	Solstice Gold Corp. (100%)	ACTIVE
KH 43	K90306	1250	30-Aug-16	30-Aug-19	Solstice Gold Corp. (100%)	ACTIVE
KH 44	K90307	1250	30-Aug-16	30-Aug-18	Solstice Gold Corp. (100%)	ACTIVE
KH 45	K90308	1250	30-Aug-16	30-Aug-18	Solstice Gold Corp. (100%)	ACTIVE
KH 46	K90309	1240.6	30-Aug-16	30-Aug-18	Solstice Gold Corp. (100%)	ACTIVE
KH 47	K90310	1250	30-Aug-16	30-Aug-19	Solstice Gold Corp. (100%)	ACTIVE
KH 48	F92423	918.4	30-Aug-16	30-Aug-26	Solstice Gold Corp. (100%)	ACTIVE
KH 49	F92424	1249.8	30-Aug-16	30-Aug-18	Solstice Gold Corp. (100%)	ACTIVE
KH 50	F92425	1045.2	30-Aug-16	30-Aug-18	Solstice Gold Corp. (100%)	ACTIVE
KH 51	K90378	1045.2	14-Dec-16	14-Dec-18	Solstice Gold Corp. (100%)	ACTIVE
KH 52	K90379	1045.2	14-Dec-16	14-Dec-18	Solstice Gold Corp. (100%)	ACTIVE
KH 53	K90380	1045.2	14-Dec-16	14-Dec-18	Solstice Gold Corp. (100%)	ACTIVE
KH 56	K90383	1045.2	14-Dec-16	14-Dec-18	Solstice Gold Corp. (100%)	ACTIVE
KH 60	K90387	1250	14-Dec-16	14-Dec-18	Solstice Gold Corp. (100%)	ACTIVE
KH 64	K90391	1250	14-Dec-16	14-Dec-18	Solstice Gold Corp. (100%)	ACTIVE
KH 67	K90394	1250	14-Dec-16	14-Dec-18	Solstice Gold Corp. (100%)	ACTIVE

Claim Name	Claim Number	Area (Ha)	Issue Date	Anniversary Date*	Owner	Status
KH 68	F93676	1250	14-Dec-16	14-Dec-18	Solstice Gold Corp. (100%)	ACTIVE
KH 69	F93678	1250	14-Dec-16	14-Dec-18	Solstice Gold Corp. (100%)	ACTIVE
KH 71	F93681	1012.1	14-Dec-16	14-Dec-18	Solstice Gold Corp. (100%)	ACTIVE
KH 72	F93682	1017.7	14-Dec-16	14-Dec-18	Solstice Gold Corp. (100%)	ACTIVE
KH 73	F93683	1023.4	14-Dec-16	14-Dec-18	Solstice Gold Corp. (100%)	ACTIVE
KH 74	F93684	1029.1	14-Dec-16	14-Dec-22	Solstice Gold Corp. (100%)	ACTIVE
KH 75	F93680	823.1	14-Dec-16	14-Dec-26	Solstice Gold Corp. (100%)	ACTIVE
KH 76	F93685	1080.9	14-Dec-16	14-Dec-22	Solstice Gold Corp. (100%)	ACTIVE
KH 106	K90374	405.1	14-Dec-16	14-Dec-18	Solstice Gold Corp. (100%)	ACTIVE
KH 110	K91810	1213.2	24-Oct-17	24-Oct-19	Solstice Gold Corp. (100%)	ACTIVE
KH 111	K91811	1222.22	24-Oct-17	24-Oct-19	Solstice Gold Corp. (100%)	ACTIVE
KH 112	K91812	1220.78	24-Oct-17	24-Oct-19	Solstice Gold Corp. (100%)	ACTIVE
KH 113	K91813	1217.36	24-Oct-17	24-Oct-19	Solstice Gold Corp. (100%)	ACTIVE
KH 114	K91814	1221.19	24-Oct-17	24-Oct-19	Solstice Gold Corp. (100%)	ACTIVE
KH 115	K91815	1189.28	24-Oct-17	24-Oct-19	Solstice Gold Corp. (100%)	ACTIVE
KH 116	K91816	1230.14	24-Oct-17	24-Oct-19	Solstice Gold Corp. (100%)	ACTIVE
KH 117	K91817	1201.22	24-Oct-17	24-Oct-19	Solstice Gold Corp. (100%)	ACTIVE
KH 118	K91818	1229.13	24-Oct-17	24-Oct-19	Solstice Gold Corp. (100%)	ACTIVE
KH 119	K91819	1198.29	24-Oct-17	24-Oct-19	Solstice Gold Corp. (100%)	ACTIVE
KH 120	K91820	1211.24	24-Oct-17	24-Oct-19	Solstice Gold Corp. (100%)	ACTIVE
KH 121	K91821	1222.5	24-Oct-17	24-Oct-19	Solstice Gold Corp. (100%)	ACTIVE
KH 122	K91822	1198.63	24-Oct-17	24-Oct-19	Solstice Gold Corp. (100%)	ACTIVE
KH 123	K91823	1218.88	24-Oct-17	24-Oct-19	Solstice Gold Corp. (100%)	ACTIVE
KH 124	K91824	1189.1	24-Oct-17	24-Oct-19	Solstice Gold Corp. (100%)	ACTIVE
KH 126	K91826	1192.13	24-Oct-17	24-Oct-19	Solstice Gold Corp. (100%)	ACTIVE
KH 128	K91828	1218.96	24-Oct-17	24-Oct-19	Solstice Gold Corp. (100%)	ACTIVE
KH 129	K91829	1224.25	24-Oct-17	24-Oct-19	Solstice Gold Corp. (100%)	ACTIVE
KH 130	K91830	1203.08	24-Oct-17	24-Oct-19	Solstice Gold Corp. (100%)	ACTIVE
KH 131	K91831	1225.07	24-Oct-17	24-Oct-19	Solstice Gold Corp. (100%)	ACTIVE
KH 132	K91832	1208.54	24-Oct-17	24-Oct-19	Solstice Gold Corp. (100%)	ACTIVE
KH 135	K91835	1221.65	24-Oct-17	24-Oct-19	Solstice Gold Corp. (100%)	ACTIVE
KH 136	K91836	1207.35	24-Oct-17	24-Oct-19	Solstice Gold Corp. (100%)	ACTIVE
KH 138	K91838	1225.26	24-Oct-17	24-Oct-19	Solstice Gold Corp. (100%)	ACTIVE
KH 139	K91839	1250	24-Oct-17	24-Oct-19	Solstice Gold Corp. (100%)	ACTIVE
KH 144	K91744	126.18	24-Oct-17	24-Oct-27	Solstice Gold Corp. (100%)	ACTIVE
KH 145	K91745	101.24	24-Oct-17	24-Oct-27	Solstice Gold Corp. (100%)	ACTIVE
KH 146	K91746	1250	22-Jun-18	22-Jun-20	Solstice Gold Corp. (100%)	ACTIVE
KH 147	K91747	1250	22-Jun-18	22-Jun-20	Solstice Gold Corp. (100%)	ACTIVE
KH 148	K91748	1250	22-Jun-18	22-Jun-20	Solstice Gold Corp. (100%)	ACTIVE
KH 149	K91749	1250	22-Jun-18	22-Jun-20	Solstice Gold Corp. (100%)	ACTIVE
KH 150	K91750	1250	22-Jun-18	22-Jun-20	Solstice Gold Corp. (100%)	ACTIVE
KH 151	K91751	1250	22-Jun-18	22-Jun-20	Solstice Gold Corp. (100%)	ACTIVE
KH 152	K91752	920	22-Jun-18	22-Jun-20	Solstice Gold Corp. (100%)	ACTIVE
Total		173,744.17				

*Note: Exploration work was filed in assessment report submitted in November of 2018 for claims listed with Anniversary dates in 2018. Notice was received in late November 2019 that the report costs were approved, but final cost distributions are pending at the time of this report.

Appendix B

2019 Drill Site Coordinates and Reclamation Photos

2019 Drill Site Coordinates and hole information

Drill Hole	UTM - East	UTM - North	Elevation (m)	Dip	Azimuth	Length (m)
2019-01	581071	6998074	210	-45	200	313.7
2019-02	581164	6994671	205	-45	210	359
2019-03	580053	6995125	206	-45	215	173
2019-04	579069	6995634	212	-45	215	131
2019-05	581118	6994694	205	-45	205	356
2019-06	581832	6997335	208	-45	180	110

UTM Coordinate - NAD83/15N

Reclamation Photos



2019-01 Collar



2019-02 Collar



2019-03 Collar



2019-04 Collar



2019-05 Collar



2019-06 Collar

Appendix C

2019 Water Use Record

2019 Water Consumption Record	
Date	Water consumed - m3
August 15, 2019	14.6
August 16, 2019	30.7
August 17, 2019	38.8
August 18, 2019	99.4
August 19, 2019	63.1
August 20, 2019	7.3
August 21, 2019	0.0
August 22, 2019	57.4
August 23, 2019	92.2
August 24, 2019	50.9
August 25, 2019	12.1
August 26, 2019	58.2
August 27, 2019	19.4
August 28, 2019	0.0
August 29, 2019	14.6
August 30, 2019	45.3
August 31, 2019	70.3
September 1, 2019	9.7
September 2, 2019	50.1
September 3, 2019	55.8
September 4, 2019	0.0
September 5, 2019	35.6
September 6, 2019	94.6
September 7, 2019	4.9
September 8, 2019	17.0
September 9, 2019	58.2
September 10, 2019	53.4
September 11, 2019	24.3
September 12, 2019	21.0
September 13, 2019	67.9

Appendix D
2018 Contractor Services

Rankin Inlet

Inukshuk Lodge
Inukshuk Construction
Kowmuk Freight
Harry Ittinaur
Curley Construction Corp.
Curley Construction Corp.
Sarliaq Holdings
Umingmak Supply
Kativik Ltd True Value Hardware
Rankin Auto Value
Rankin Inlet Gas Station
Northern Store
Kissarvik Co-op
JL Repair
M&T Enterprises Ltd (Sakku)
Toromont Arctic Ltd (Sakku)
Rankin Inlet SAR – 3 search and rescue programs
Siniktarvik Hotel
Turaarvik Inns North
Canada Post

Chesterfield Inlet

Misheralak Freighting
Tangmavik Inns North Hotel
Pitsiulak Co-op Ltd.

Iqaluit

Desgagnes Transarctik Inc. / Nunavut Sealink and Supply Inc.

Yellowknife

Canadian North Air Cargo Services
Nunavut Expediting Services Ltd (Discovery Mining Services)
Northern Communications Ltd.

Manitoba

Arctic Buying Company Inc.
Calm Air
Calm Air Cargo
Custom Helicopters Ltd.
Norseman Supply Ltd.

British Columbia

Deakin Industries

Subscription Services

Bell Mobility
Garmin RoadPost

Appendix E

2019 Community Consultation Log

Date	Time	Type (in-person meeting, phone, Email, other)	Community/Agency	Contact/Attendees	Details	Concerns/Follow- up/Mitigation/Action items	Backup Document on File
2019-01-28	1-3:00 pm	In-person meeting	CIRNAC	CIRNAC - Tracey, Karen, Jeff Solstice - Tbursey	CIRNAC consultation for pending changes to the NU Mining Act and on-line management system.	Pulbic concern and input to the proposed changes.	Minutes
2019-03-03	10-11:00 am	In-person meeting	KIA - Rankin Inlet	KIA - Luis Manzo, Ashley Aqpalukuq-Burton, Brenda Osmond, Jeff Tulugak, Maria Serra Solstice Gold - Marty Tunney, Ian Russell, Terry Bursey	Meeting to update on the project and follow-up on the KIA permit application. Permit received by KIA at the meeting. Attended NTI Luncheon with representatives from multiple government agencies and companies working in Nunavut.	Received KIA permit.	Minutes
2019-04-02	April 2-4	Nunavut Mining Symposium	Iqaluit	Solstice Gold - Marty Tunney and Terry Bursey	Attended conference, met with various governtment, companies and individuals including: Agnico, local Nunavut prospectors, supliers, government agencies (GN regarding proposed road Rankin to Chesterfield Inlets)	n/a	N/A
2019-05-27		Invite to in-person meeting	Rankin Inlet	MLA - Cathy Towtongie	Declined as in Iqaluit for Spring sitting.	n/a	Email
2019-06-04	1-2:30 pm	In-person meeting	KIA - Rankin Inlet	KIA - Luis Manzo, Ashley Aqpalukuq-Burton, Brenda Osmond, Maria Serra Solstice Gold - Marty Tunney and Terry Bursey	Meeting with KIA to update on Solstice Exploration programs. Review of 2019 proposed work plan - geological mapping and sampling. Potential for late summer drilling pending confirmation.	General discussions regarding program logisitics.	Minutes

2019-06-04	5-7 pm	Open House	Rankin Inlet		<p>15 people in attendance. MT gave a powerpoint presentation of project plans for the summer field season and permit update (Solstice now operating under their own permits).</p> <p>Plan to base out of Rankin Inlet, as opposed to camp for the summer months and conduct mapping and prospecting with helicopter support. Potential drilling/geophysics late season. Small crew. 1-2 local hires out of Chesterfield Inlet. Rankin Inlet local Inuit-owned business to supply expediting and supplies from local businesses.</p> <p>Solstice Gold informed that they are now working under their own permits (KIA, NWB and CIRNAC), save for they still share the camp permit with Dunnedin Ventures Inc.</p>	<p>Concerns raised: Local hires - company hires from Chesterfield Inlet and buys supplies and services from Rankin - benefits both communities Use of helicopter in town and flying to property causing disturbance - Company follows a protocol to take off, gain elevation, avoid town and maintain elevation between town and the property as not to disturb wildlife (Caribou mitigation measures are enacted if caribou encountered) Questions raised about the length of the project and exploration and also the camp (would it be removed). Company does not know how long it will be exploring as results dependant, camp (DVI) will be removed once fianl demobe from the area is foreseen.</p>	Poster, Powerpoint and minutes
2019-06-05	n/a	Open House	Chesterfield Inlet	n/a	Post-poned due to flight cancellations because of bad weather (fog). (rescheduled to July 12, 2019)	n/a	Email/poster

2019-06-28	9-10:00 am	In-person meeting	HTO - Rankin Inlet	HTO - Clayton Tartak Solstice Gold - Ian Russell, Terry Bursey	Met with HTO (CT) in Rankin Hto offices to discuss the active caribou migration. Solstice Gold arrived in Rankin Inlet to commence geological field programs and the caribou migration was happening north of town. Met with Clayton to discuss general patterns and time for herd to pass through. Clayton shared current maps (visually) showing the path of migration. COs were actively monitoring the Agnico mine road on a daily basis and escorting traffic to the mine.	Solstice delayed helicopter flights and crew transport to the project area northeast of town until the main herd passed through and the area was free from caribou.	n/a
2019-06-28	10-11:00 am	In-person meeting	GN - Rankin Inlet	HTO - Robert Connolly Solstice Gold - Ian Russell, Terry Bursey	Met with GN regarding current Caribou migration and to introduce Ian Russell VP of Solstice. General project overview and to touch base while based in Rankin Inlet for the summer.	Solstice delayed helicopter flights and crew transport to the project area northeast of town until the main herd passed through and the area was free from caribou.	n/a

2019-07-12	11-12:30	In-person meeting	HTO - Chesterfield Inlet	Chesterfield Inlet HTO - Harry Aggark Solstice Gold - Marty Tunney, Terry Bursey	Met with CI HTO. MT gave an update of the Company's summer exploration plans and general update.	<p>Concerns discussed: HA - hope for more hauling and transportation opportunities. Hope for more job opportunities for the community in the future - Solstice does hire seasonally from Chesterfield Inlet on a priority basis. Rankin does receive local procurement of goods and services.</p> <p>HA - Commented that Solstice did a good job allowing the caribou to migrate through early in the season, by not flying the helicopter or crews out in the field until the caribou had left the area (delayed pick-up of local employee as well and the right thing to do).</p>	Minutes
------------	----------	-------------------	--------------------------	--	--	---	---------

2019-07-12	1-3:30 pm	In-person meeting	Hamlet of Chesterfield Inlet	<p>Chesterfield Inlet Mayor and Council - Simonne, Paul (SAO), Soloman, Jimmy, David, Louis and elders/councillors. Solstice Gold - Marty Tunney, Terry Bursey</p>	<p>Marty Tunney gave a project update and overview of 2019 field exploration plans to the Hamlet Mayor, Council and elders present (9 representatives). Apologized for coming late as flights cancelled during early June planned Open House. Discussed size of program reduced from 23 people in 2018 to about 6 people in 2019, base from Rankin instead of camp as more cost efficient, difficult year to raise capital, current project is pure exploration (not revenue generating), etc. Solstice mandate is to hire from Chesterfield Inlet on a priority basis for local hires, Edwin Aggark will be coming back for the field season, another local declined due being town-based. Rankin does benefit from local procurement of goods and services. Solstice Gold informed that they are now working under their own permits (KIA, NWB and CIRNAC), save for they still share the camp permit with Dunnedin Ventures Inc. MT offered to come back in the fall once results received from summer programs (Oct/Nov).</p>	<p>Concerns raised: Lack of opportunity in Chesterfield Inlet in general for employment - Solstice does provide seasonal employment where possible and on-the-job training of those individuals. Concerns that sometimes exploration companies fly helicopter too low and disturb wildlife - Solstice acknowledged the concern and explained their protocol to take off, gain altitude and maintain altitude to destination to minimize/mitigate any disturbance. Community member asked if the company would be willing to use helicopter to help locate members stranded/missing on the land - Solstice more than willing, please call and we have done so in the past as well. Mayor and Council were very supportive of Solstice Gold and pleased to see them working in the area.</p>	Minutes
------------	-----------	-------------------	------------------------------	--	---	--	---------

2019-08-10	1-3:00 pm	In-person meeting	CIRNAC	CIRNAC - Alia Bigio and Matt Solstice - Ian Russell and Terry Bursey	IR gave a corporate presentation followed by a technical presentation of the Solstice Gold project to date including a history of the project; land package status and update; 2017/2018 highlights and 2019 work program to date; and pans to the end of the field season.	No concerns raised, discussion focused on technical exchange of ideas and models for the project. CIRNAC geologists were thankful of the update.	Minutes
2019-09-10	Sept 10/11/12 8-4pm	In-person meeting	Hamlets from Rankin Inlet, Chesterfield Inlet, Baker Lake, Whale Cove, Arviat, plus HTO's, WWF, Agnico, Solstice Gold, GN, NTI - Regional meeting	Solstice Gold - Ian Russell, Terry Bursey	Goals of the meeting: 1 - To discuss and identify Community Areas of Interest for cultural and conservation reasons through a participatory mapping exercise; and 2 - Industry representative to share their studies, perspectives on the business of exploration and caribou management in the region.	Caribou Management; Economic development of the region; protection of cultural/conservation areas.	Notebook of meeting minutes