



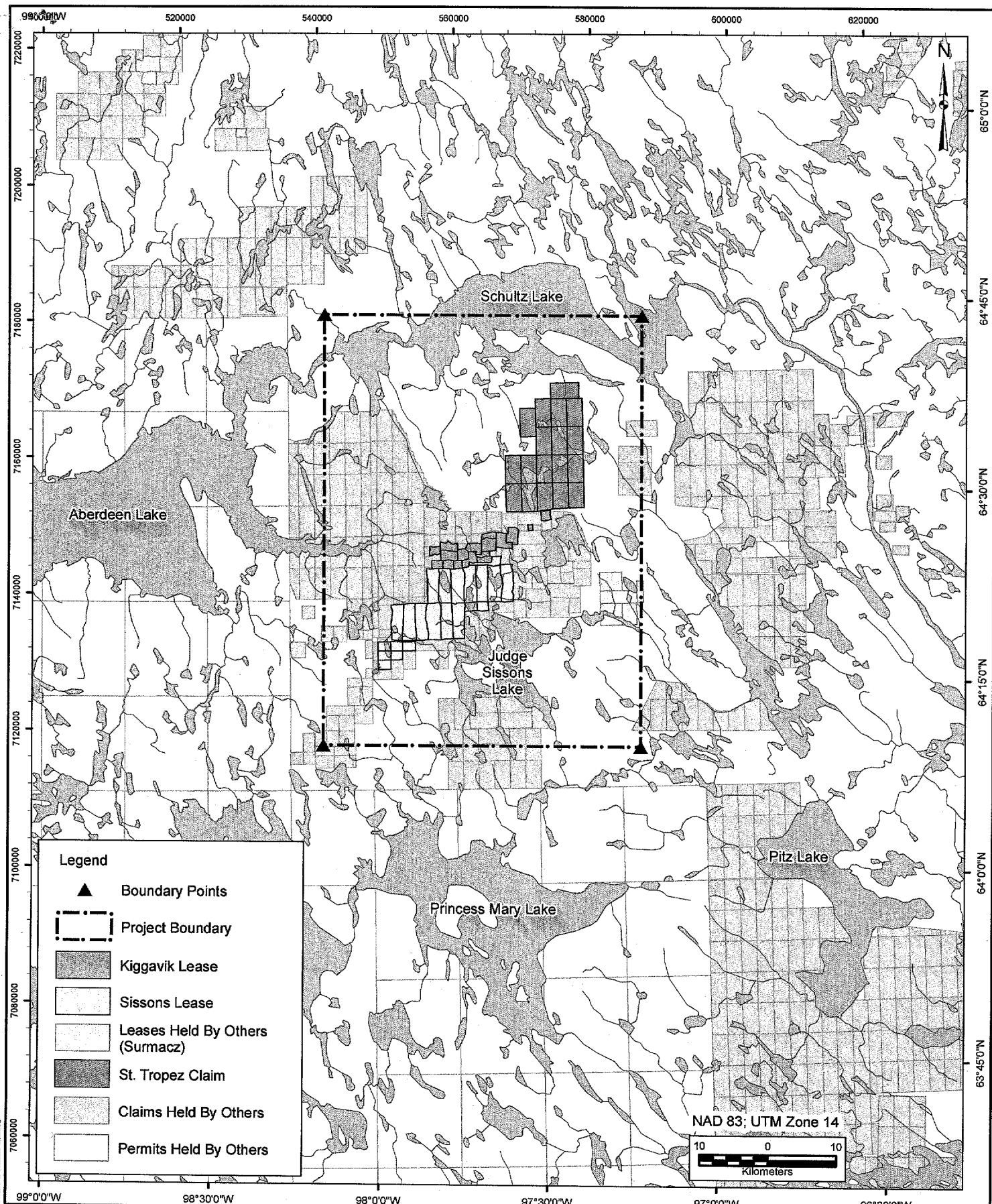
SCALE:	1:7,500,000	DATE:
DESIGNED:		
DRAWN:	JRC	1/11/06
REVISED:		
APPROVED:		
REF. DWGS:		
REVISIONS:		
FILE:		

KIGGAVIK PROJECT

FIGURE 1
PROJECT GENERAL LOCATION

REV. NO.: 1

Q:\ENV_GIS\ArcProjects\Kiggavik\GIS\Permits 2.mxd

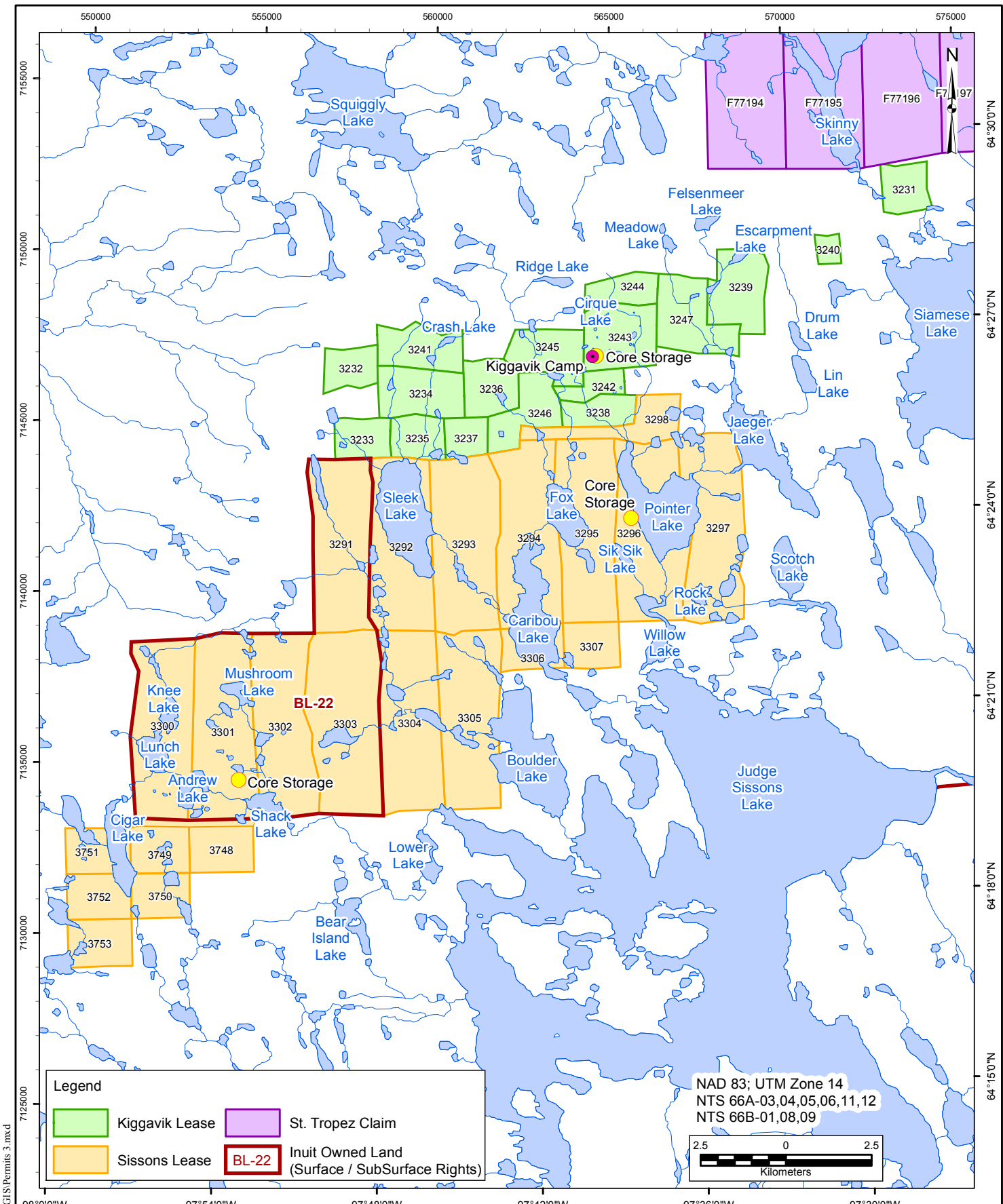


SCALE:	1:750,000	DATE:
DESIGNED:		
DRAWN:	JRC	12/21/06
REVISED:		
APPROVED:		
REF. DWGS:		
REVISIONS:		
FILE:		

KIGGAVIK PROJECT

FIGURE 2
REGIONAL LOCATION

REV. NO.: 1



Q:\ENV_GIS\ArcProjects\Kiggavik\GIS\Permits 3.mxd

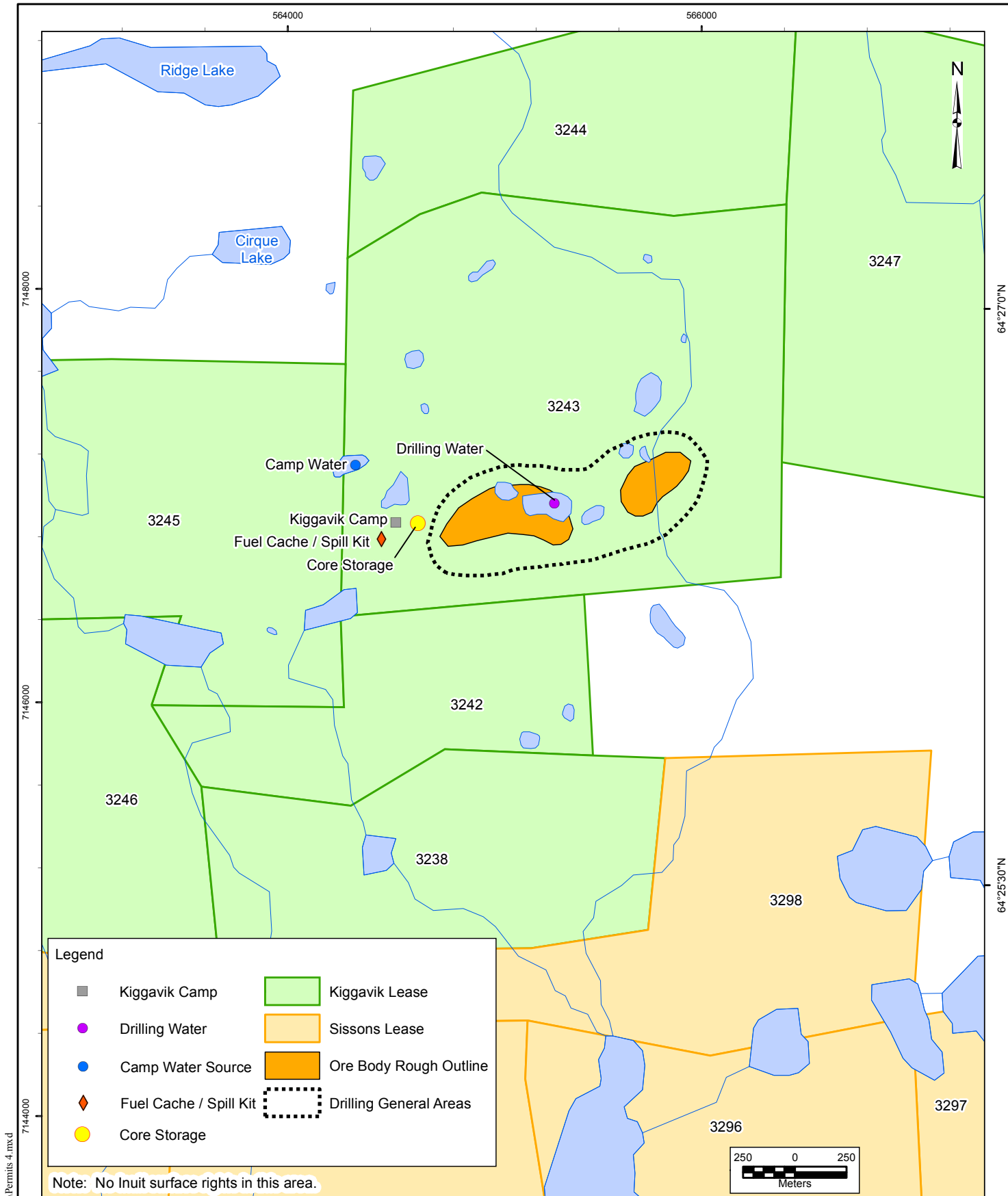


SCALE:	1:150,000	DATE:	
DESIGNED:			
DRAWN:	JRC		1/11/06
REVISED:			
APPROVED:			
REF. DWGS:			
REVISIONS:			
FILE:			

KIGGAVIK PROJECT

**FIGURE 3
SITE LOCATIONS**

REV. NO.: 1

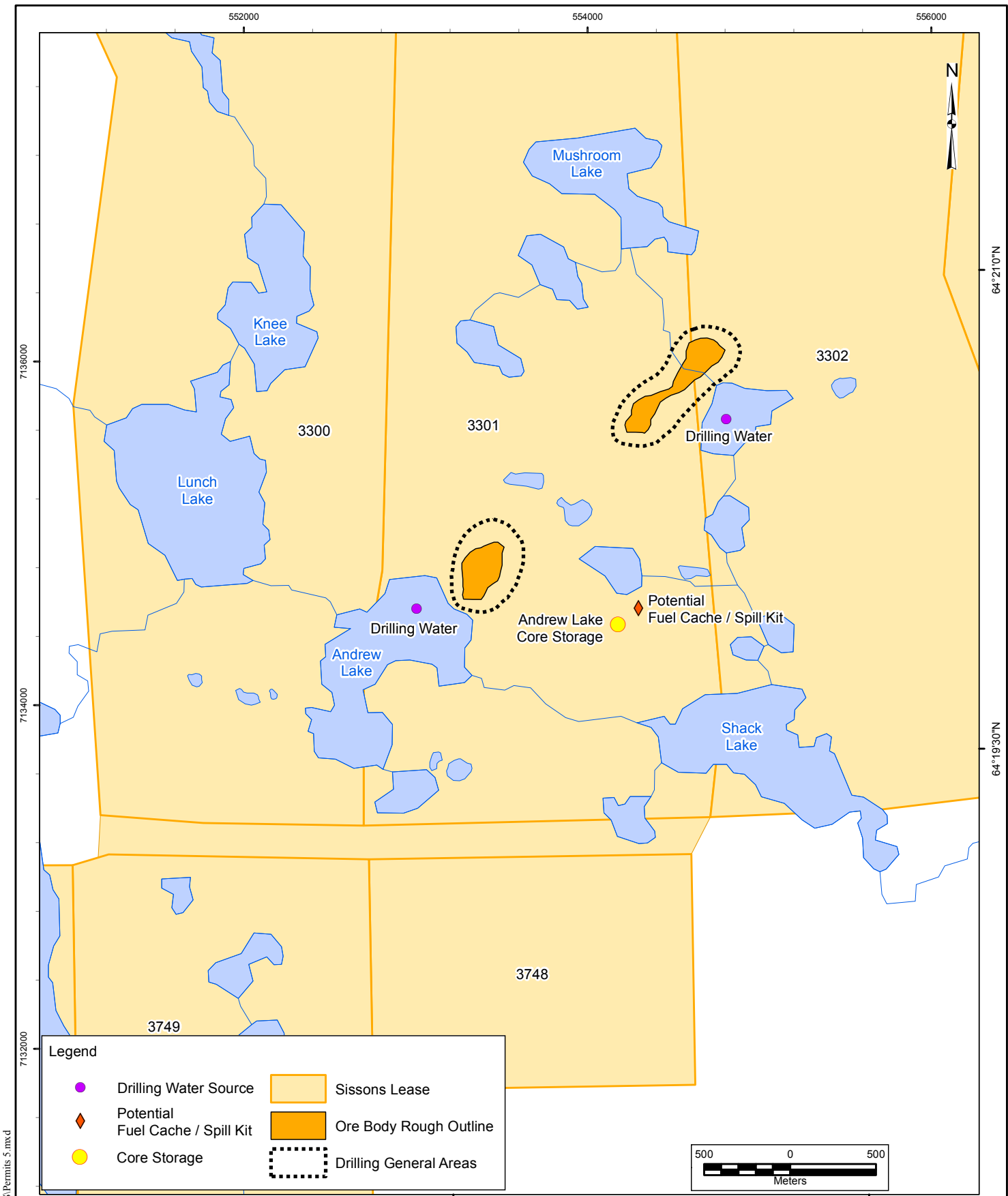


SCALE:	1:25,000	DATE:
DESIGNED:		
DRAWN:	JRC	1/11/06
REVISED:		
APPROVED:		
REF. DWGS:		
REVISIONS:		
FILE:		

KIGGAVIK PROJECT

FIGURE 4
KIGGAVIK SITE

REV. NO.: 1



Q:\ENV_GIS\ArcProjects\Kiggavik\GIS\Permis 5.mxd

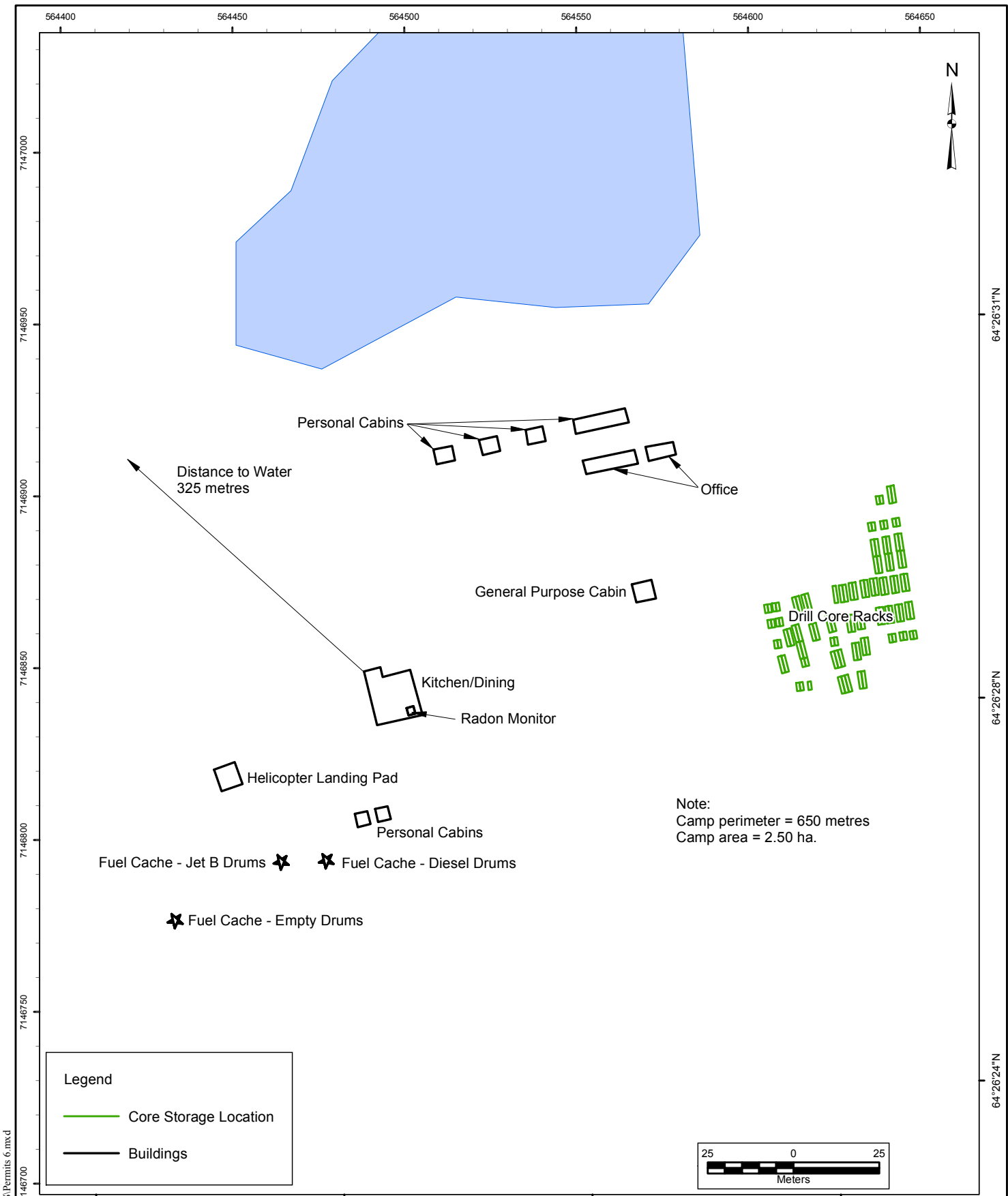


SCALE:	1:30,000	DATE:
DESIGNED:		
DRAWN:	JRC	1/11/06
REVISED:		
APPROVED:		
REF. DWGS:		
REVISIONS:		
FILE:		

KIGGAVIK PROJECT

FIGURE 5
SISSONS SITE

REV. NO.: 1



Q:\ENV_GIS\ArcProjects\Kiggavik\GIS\Permits 6.mxd

	SCALE:	1:1,500	DATE:	KIGGAVIK PROJECT	
	DESIGNED:				
	DRAWN:	JRC	1/11/06	FIGURE 6 KIGGAVIK SITE DETAIL EXISTING BUILDINGS	
	REVISED:				
	APPROVED:				
	REF. DWGS:				
	REVISIONS:				
	FILE:			REV. NO.: 1	

Figure 7: Photo of the Existing Kiggavik Camp Site Looking SW (2003)

