



Nunavut Planning Commission
Keewatin Regional Land Use Plan
Conformity Determination
KIGGAVIK Project



Kiggavik Sissons Advanced Exploration Project
Mr. Barry McCallum
Manager Nunavut Affairs
AREVA Resources Canadian Inc.
P.O. Box 9204
817 - 45th Street West
Saskatoon Saskatchewan S7K 3X5 Canada
Phone: (306) 343-4596
Fax: (306) 343-4640
Mobile: (306) 262-4636
E-mail: barry.mccallum@areva.ca
Camp & helicopter. Prospecting, geological mapping, geochemical and geological surveys, airborne geophysics & diamond drilling. Environmental baseline work incl surface hydrology, aquatic and terrestrial components.

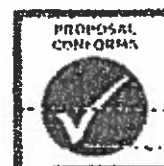
PROJECT CONFORMS TO ALL APPLICABLE TERMS OF THE...
KEEWATIN REGIONAL LAND USE PLAN.

Please refer to the following eleven pages for details.

Signature of NPC Conformity Determination Officer

Dec. 15/06

Date



ES



Nunavut Planning Commission
Keewatin Regional Land Use Plan
Conformity Determination

KIGLAVIK Project



ARCHAEOLOGICAL SITES AND ARTIFACTS

Tent ring. Land users must report the discovery of suspected archaeological sites to the Department of Culture, Language, Elders and Youth (Government of Nunavut). Photo © Nunavut Planning Commission.

Conformity Requirement 2.15.8 Artifacts must be left where they are found. All land users are responsible for reporting the location of, or any removal or disturbance of, artifacts to CLEY.

Conformity Requirement 4.3 The NPC and the CMC shall continue to hold a central registry of archaeological sites and continue to monitor land use activities to protect these sites. Information about the location and identity of archaeological sites in specific areas, and the measures necessary to protect them, shall be included in land use permits. Land users shall report the discovery of all suspected archaeological sites to CLEY.

DETERMINATION

The proponent will abide by conformity requirements 2.15.8 and 4.3 (conforms).



PS



Nunavut Planning Commission
Keewatin Regional Land Use Plan
Conformity Determination
KIGGAVIK Project



CARIBOU PROTECTION

Caribou at a water crossing.
Land users shall follow the caribou protection measures.

Conformity Requirement 2.6 Development activities shall be prohibited on all public lands and waters within all caribou calving areas during calving season and within caribou water crossings in the Keewatin, in accordance with the terms of DIAND caribou protection measures contained in Appendix H. Development activities shall be prohibited on IOL within all caribou calving areas during calving season and within caribou water crossings in the Keewatin, in accordance with the KIA caribou protection measures (an example of which is contained in Appendix H.) These measures shall be enforced throughout the region by DIAND, KIA and DSD, to the full extent of their respective jurisdictions.

Conformity Requirement 2.15.7 During the caribou calving, post-calving and migrating seasons, land use activities should be restricted to avoid disturbing caribou, in general, and activities will be governed more specifically by caribou protection measures such as those contained in Appendix H.

DETERMINATION

The proponent will abide by the Caribou Protection Measures (conforms).





Nunavut Planning Commission
Keewatin Regional Land Use Plan
Conformity Determination

KIGGAVIK Project



CLEANUP AND POLLUTION

*Fuel drums on the land. Project proponents must undertake to remove old fuel drums.
Photo by Luke Sulluk*

Conformity Requirement 2.8

- b) Community residents in particular, and all land users in general, shall be actively involved in planning and conducting cleanup operations, whenever possible and practicable.
- c) Refuse, such as fuel drums and scrap metal, shall be recycled where possible.
- d) Sites containing toxic materials shall be given priority for cleanup, and the location of these sites shall be widely publicized to warn residents.
- e) Sites within or near caribou calving grounds, near water and near communities shall also be given priority for cleanup.

Conformity Requirement 2.9 New occurrences of pollution, garbage and contamination caused by anyone shall be prevented. Land users shall ensure that all drums are safely recovered.

Conformity Requirement 2.10 The principle of "the polluter pays" shall apply to a strategy for cleaning up the environment. Where it is possible to identify the person, company or agency responsible for creating an abandoned or inactive waste site, they shall be made responsible for the cleanup and restoration of the site.

Conformity Requirement 2.15.1 The landscape of each camp and other land use sites will be restored to its original condition to the greatest degree possible. When possible and feasible, old sites will be restored to the natural state. (Code of Good Conduct - Appendix G)

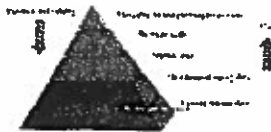
DETERMINATION

The proponent will abide by all conformity requirements (conforms).





**Nunavut Planning Commission
Keewatin Regional Land Use Plan
Conformity Determination
KIGGAVIK Project**



HYDROCARBON EXPLORATION

*Hydrocarbon exploration validity vs. cost.
Hydrocarbon exploration is restricted around Southampton and Coats Islands.
Graphic © PetroConsult Pty Ltd. ent ring.*

Conformity Requirement 3.8 Hydrocarbon exploration shall continue to be restricted in the area encompassing southern Southampton Island and Coats Island, as at present.

DETERMINATION

The project proposal is not for hydrocarbon exploration in the area encompassing southern Southampton Island and Coats Island (Conformity Requirement 3.8 is not applicable).





Nunavut Planning Commission
Keewatin Regional Land Use Plan
Conformity Determination
KIGGAVIK Project



HYDROELECTRIC DEVELOPMENT

*Hydro project in Québec.
Hydro projects in a number of provinces, as well as Nunavut, can have a cumulative effect
on James Bay, Hudson Bay and Hudson Strait.*

Photo by Michèle Emishong, Radio Netherlands.

Conformity Requirement **Conformity Requirement 2.13** The possible cumulative impacts of additional hydroelectric power development in Manitoba, Ontario and Quebec on the ecosystem of Hudson Bay, James Bay and Hudson Strait must be examined before more hydroelectric development proceeds.

DETERMINATION

The project proposal is not for hydroelectric development (conformity requirement 2.13 is not applicable).



RS



Nunavut Planning Commission
Kcewatlin Regional Land Use Plan
Conformity Determination
KIGGAVIK Project



LOCAL PURCHASE OF SUPPLIES AND SERVICES

*taxi at the West Meliadine exploration camp.
Land users shall follow the practice of local purchase of supplies and services.*

Photo © WMC Limited.

Conformity Requirement 2.15.5 Whenever practicable, and consistent with sound procurement management, land users will follow the practice of local purchase of supplies and services. (Code of Good Conduct, Appendix G.)

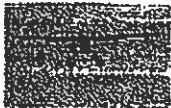
DETERMINATION

The proponent will abide by conformity requirement 2.15.5 (conforms).





Nunavut Planning Commission
Keewatin Regional Land Use Plan
Conformity Determination
KIGGAVIK Project



LOW-LEVEL FLIGHTS

Beaver floatplane arriving at a camp.
Pilots must avoid disturbance to people and wildlife wherever possible.
Photo © Luke Cuddy.

Conformity Requirement 2.15.3 Generally, low-level flights by aircraft at less than 300 metres should not occur where they will disturb wildlife or people. If such flights are necessary, they should only take place after consultation with the appropriate communities. All land users are responsible for reporting to the land managers any illegal or questionable low-level flight.

Conformity Requirement 2.4 Low level flights shall not take place unless absolutely necessary. Should they be necessary, pilots shall avoid disturbance to people and wildlife wherever possible.

DETERMINATION

The project proposal does involve absolutely necessary low level flights, the proponent has or will consult with the communities, and pilots will avoid disturbance to wildlife and people (conforms).

Comment:
Reasonable comments on the necessity of low-level flight



RS



**Nunavut Planning Commission
Keewatin Regional Land Use Plan
Conformity Determination
KIGGAVIK Project**



MINE CLOSURE AND RESTORATION

*Blasting at a northern mine site.
The Keewatin Regional Land Use Plan requires restoration plans
for all mining developments in the Region.*

Photo by Nunavut Planning Commission.

Conformity Requirement 3.4 All proposals for mining developments shall include adequate plans for mine closure and restoration of the site.

DETERMINATION

The project proposal is not for mining development (conformity requirement 3.4 is not applicable).



PS



Nunavut Planning Commission
 Keewatin Regional Land Use Plan
 Conformity Determination
 KIGGAVIK Project



ACADEMIC AND / OR SCIENTIFIC RESEARCH

*Successfully collaring a caribou.
 Local services and employment shall, whenever possible, be
 incorporated in scientific research programs in the Keewatin*

Photo by Robert Muldrew

Conformity Requirement 6.2 Local and traditional knowledge shall be sought and, when available and relevant, shall be integrated with the scientific knowledge.

Conformity Requirement 6.3 Research programs conducted in the Keewatin shall, where possible, rely on local services and local employment.

Conformity Requirement 6.4 All scientific researchers shall communicate with the communities in clear, non-technical language in Inuktitut and English. Scientific researchers shall communicate the results of their research to the communities.

Conformity Requirement 6.5 Academic and scientific researchers shall make all reasonable efforts to consult the NRI concerning research topics or fields that would be of benefit and interest to local residents.

DETERMINATION

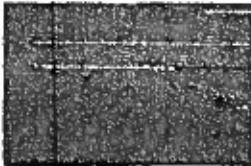
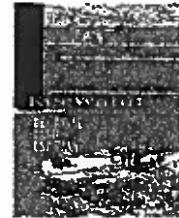
The project proposal does not involve academic and/or scientific research (conformity requirements are not applicable).





Nunavut Planning Commission
Keewatin Regional Land Use Plan
Conformity Determination

KIGGAVIK Project



TRANSPORTATION AND/OR COMMUNICATIONS CORRIDORS

Proposals for transportation corridors shall be publicly reviewed, and may lead to amendment of the Plan.

Photo © Nunavut Planning Commission.

Conformity Requirement 5.6 All parties wishing to develop a transportation and/or communications corridor shall submit to the NPC a detailed application for an amendment. This application must include an assessment of alternative routes, plus the cumulative effects of the preferred route. It shall provide reasonable options for other identifiable transportation and utility facilities. In particular, this application must meet the information requirements set out in Appendix J.

Conformity Requirement 5.7 The NPC and either NERR or a panel acting under s. 12.4.7 of the NLCA shall publicly review the proposed corridor to determine whether the proposal adequately meets the requirements of Appendix J and the guidelines of Appendix J. Once it is determined that a proposal meets the guidelines, the NPC may request the Minister of DIAND to amend the plan to include the new transportation corridor.

DETERMINATION

The project proposal is not for the development of a transportation and/or communications corridor (conformity requirements 5.6 and 5.7 are not applicable).



PS



Nunavut Planning Commission
Keewatin Regional Land Use Plan
Conformity Determination

KIGGAVIK Project



URANIUM DEVELOPMENT

Uranium development is currently not permitted in the Keewatin Planning Region.

Conformity Requirement 3.5 Uranium development shall not take place until the NPC, NIRB, the NWB and the NWMB have reviewed all of the issues relevant to uranium exploration and mining. Any review of uranium exploration and mining shall pay particular attention to questions concerning health and environmental protection.

Conformity Requirement 3.6 Any future proposal to mine uranium must be approved by the people of the region.

DETERMINATION

The project proposal is not for uranium development (conformity requirements 3.5 and 3.6 are not applicable).

