

Lupin Mines Incorporated

A wholly owned indirect subsidiary of Mandalay Resources Corporation

Lupin Exploration Project

Nunavut, Canada

Spill Contingency Plan – Addendum 3

(Licence No. 2BE-LEP1217)

March 2016

Lupin Mines Incorporated
Mandalay Resources Corporation.
76 Richmond Street East, Suite 330
Toronto, Ontario M5C 1P1

Table of Contents

1. Introduction	- 1 -
3.2 Response Equipment	- 1 -
4. Contact Information.....	- 7 -

Figures

Figure 1 Location Map, Lupin Exploration Project.....	- 4 -
Figure 2 Site Map, Lupin Exploration Project.....	- 5 -
Figure 3 Main Camp Area, Lupin Exploration Project.....	- 6 -

Tables

Table 1 Spill Response Equipment List	- 3 -
---	-------

1. INTRODUCTION

Lupin Mines Incorporated (LMI), a wholly owned indirect subsidiary of Mandalay Resources Corporation (Mandalay), has prepared this Spill Contingency Plan Addendum 2 (the Plan) with respect to the requirements within Water Licence Number 2BE-LEP1217, Part H, Item 2 and for surface exploration, which includes geological/geophysical surveying and core drilling, at the Lupin Project in Kitikmeot Region, Nunavut (Figure 1). See Spill Contingency Plan and Spill Contingency Plan Addendum located on the NWB ftp for further information.

Company: LMI
Project: Lupin Mine, Nunavut
Company Address: 76 Richmond Street East, Suite 330, Toronto, Ontario M5C 1P1
Telephone: 778-386-7340
Email: klewis@elginmining.com
Attention: Karyn Lewis, General Administration

Effective date: March 31 2016

Distribution List:

Karyn Lewis	General Administration
Discovery Mining Services	Site Contractor
Golder Associates	Site Consultant
SRK Consulting	Site Consultant

Additional copies of this addendum are available from General Administration. This addendum will be attached to the Plan will be posted in key locations at the site, and all employees and contractors will be made aware of its contents.

3.2 Response Equipment

Figure 2 illustrates the layout of the Lupin site. Five gallon spill kits are located at various fixed locations around the site as well as in the drill shack and the generator shack beside the drill, at the drill pump shack at the water source and along the water line at the relay pump shack. A spare spill kit is located with the drilling supplies in the cold storage building (Figure 3). The spill kit associated with exploration activities contain:

- 3-4 ft long sorbent socks;
- 1 kg of industrial biodegradable absorbent;
- 4 absorbent wipes
- 1 pair of rubber gloves; and
- 2 sizes of plastic disposable bags.

Spill kits response equipment, managed by the Lupin Mine, as described in the *Lupin Mine Spill Contingency Plan* (water licence 2AM-LUP1520) are illustrated on Figure 3, listed in Table 1 and contain the following:

- Small Kits (5 gal)
 - 1 pair of safety goggles;
 - 1 pair nitrile gloves;
 - 1 disposal bag;
 - 10 sorbent pads; and
 - 2 sorbent socks.

Large Kit (45 gal)

- 50 sorbent pads;
 - 3 5x120" sorbent booms;
 - 5 3x48" sorbent socks;
 - 1 20 lb bag of granular absorbent;
 - 1 neoprene drain cover;
 - 5 disposal bags;
 - 1 shovel;
 - 2 pairs of safety goggles;
 - 2 pairs of nitrile gloves; and
 - 2 Tyvex suits.
- Emergency Spill Shack
 - pick axes;
 - shovels;
 - torches;
 - hoses;
 - containers (clean, open barrels with handles);
 - industrial absorbent (60 ft³);
 - oil sorb towels; and
 - flotation booms.

Table 1 Spill Response Equipment List

#	Equipment		
3	FORD	F350	CREW CAB 4X4
1	FORD	F250	EXT CAB 4X4
1	FORD	L9000	TANDEM WATER
3	KUBOTA	RTV1100	UTILITY VEHICLE
1	KOMATSU	HM 300	ROCK TRUCK 6X6
1	KOMATSU	WA250 PT	LOADER
1	KOMATSU	WA250	LOADER
1	CATERPILLAR	966 G	LOADER
1	CATERPILLAR	966 C	LOADER
1	KOMATSU	PC 200-7	EXCAVATOR
1	CASE	580 C	BACK HOE
1	KOMATSU	D61 EX 15	DOZER W/RIPPER
1	CATERPILLAR	14 H	GRADER
1	GROVE	RT 522	20 TON R/T CRANE

Figure 3 illustrates the locations where the spill contingency plan will be posted, including: drill shack; main spill shack; main camp office; shop office; diesel pump station at the satellite tank farm.



Legend

 Project Location

Coordinate System: NAD_1983_UTM_Zone_12N

Map Sources/Notes:
Various Canadian Government Websites - Feb 2012



1:15,000,000

Approved By: SH Prepared By: PW
Project No.: LUP Date Revised: 26 Mar 2012
File Name: Lup-12-04-01-LocationMap-A.mxd

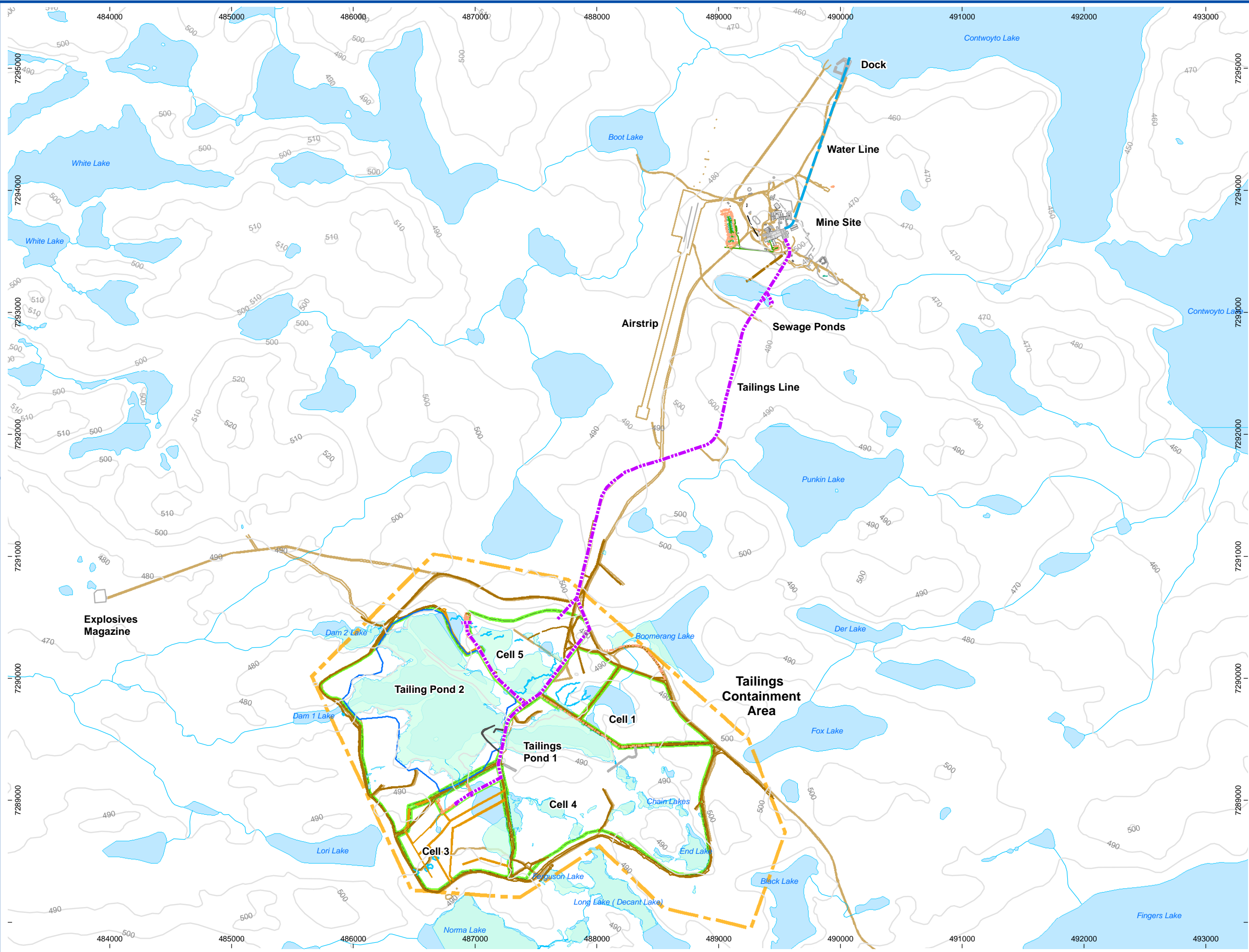
Project: **Lupin Project**
Location: Kitikmeot Region, Nunavut, Canada

Location Map - Lupin Mine

**Lupin Mines
Incorporated**

 **ELGIN
MINING INC.**

Figure: **1**
Rev: 120326

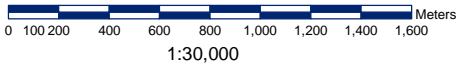


- Legend**
- Water Body 50k Topo
 - Building
 - Site Features
 - Tanks
 - Fuel Storage Containment Area
 - Berm Tank Farm
 - Berm
 - Slope Break
 - Roads
 - Contour (10m)
 - Fuel Pipe
 - Proposed Dam
 - Road
 - Dykes
 - Water -Stream, Creek
 - Tailings Cell Areas
 - Boundary Surface Lease 3594
 - Water Body Mine
 - Tailings Line
 - Water Pipeline (8 in Diam)
 - Sewage Pipeline (6 in Diam)



Map Sources/Notes:
Topographic features from 1:50,000 government topographic data.
Site Layout based on drawing by Morrow Environmental titled
"Site Plan", 2005. File A053017R00.

Coordinate System: NAD_1983_UTM_Zone_12N
NTS Map Sheets 076E11 and 076E14

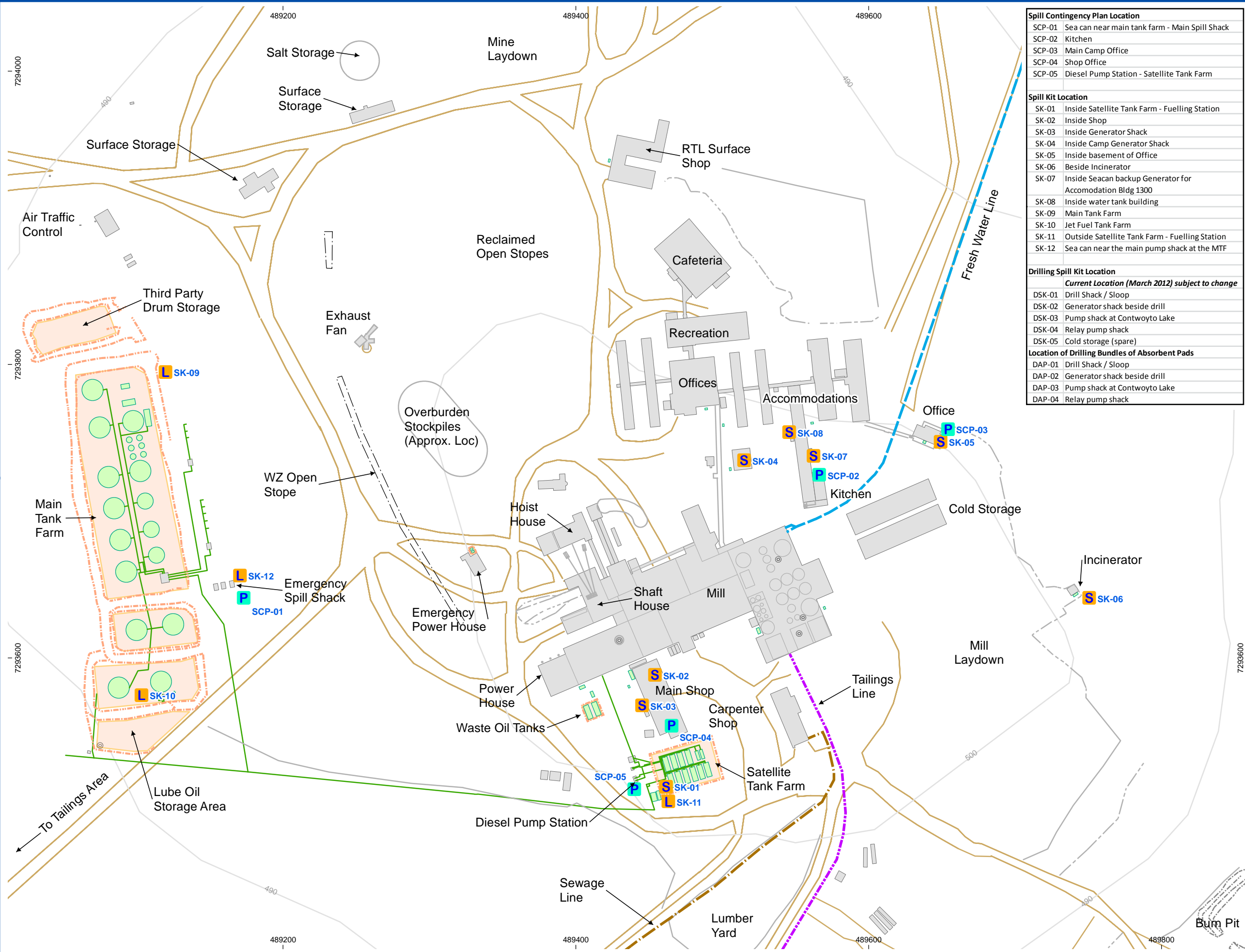


Approved By: SH
Project No.: LUP
File Name: Lup-12-17-01-ExplorSpillContPlan-WideSite-B.mxd

Prepared By: PW
Date Revised: 28 Mar 2012

Project: **Lupin Gold Mine**
Location: Kitikmeot Region, Nunavut, Canada
Exploration Program Spill Contingency Plan
Water Licence 2BM-LEP12217

Lupin Mine Site Plan



Spill Contingency Plan Location	
SCP-01	Sea can near main tank farm - Main Spill Shack
SCP-02	Kitchen
SCP-03	Main Camp Office
SCP-04	Shop Office
SCP-05	Diesel Pump Station - Satellite Tank Farm
Spill Kit Location	
SK-01	Inside Satellite Tank Farm - Fuelling Station
SK-02	Inside Shop
SK-03	Inside Generator Shack
SK-04	Inside Camp Generator Shack
SK-05	Inside basement of Office
SK-06	Beside Incinerator
SK-07	Inside Seacan backup Generator for Accomodation Bldg 1300
SK-08	Inside water tank building
SK-09	Main Tank Farm
SK-10	Jet Fuel Tank Farm
SK-11	Outside Satellite Tank Farm - Fuelling Station
SK-12	Sea can near the main pump shack at the MTF
Drilling Spill Kit Location	
<i>Current Location (March 2012) subject to change</i>	
DSK-01	Drill Shack / Sloop
DSK-02	Generator shack beside drill
DSK-03	Pump shack at Contwoyto Lake
DSK-04	Relay pump shack
DSK-05	Cold storage (spare)
Location of Drilling Bundles of Absorbent Pads	
DAP-01	Drill Shack / Sloop
DAP-02	Generator shack beside drill
DAP-03	Pump shack at Contwoyto Lake
DAP-04	Relay pump shack

Legend

Water Body 50k Topo

Building

⊙

Sump

—

Site Features

Tanks

Fuel Storage Containment Area

Berm Tank Farm

Berm Burn Pit

Slope Break

—

Roads

—

Contour (10m)

—

Fuel Pipe

Tailings Line

—

Water Pipeline (8 in Diam)

Sewage Pipeline (6 in Diam)

Spill Contingency Related Information

P

Location of Spill Contingency Plans

L

Spill Kit- Large

S

Spill Kit-Small

N

W

E

S

Map Sources/Notes:
Topographic features from 1:50,000 government topographic data.
Site Layout based on drawing by Morrow Environmental titled "Site Plan", 2005. File A053017R00.

Spill Kit and Spill Contingency Plan locations provided by Elgin Mining field staff based on observations in March 2012.

Coordinate System: NAD_1983_UTM_Zone_12N
NTS Map Sheets 076E11 and 076E14

02550100

Meters

1:2,500

Approved By: SH
Project No.: LUP
File Name: Lup-12-17-02-ExplorSpillContPlan-MainCampArea-B.mxd

Prepared By: PW
Date Revised: 28 Mar 2012

Project:
Location:
Exploration Program Spill Contingency Plan
Water Licence 2BM-LEP12217

Lupin Gold Mine
**Lupin Mine
Main Camp Area**

Lupin Mines Incorporated

ELGIN MINING INC.

Figure: 3
Rev: 120328

4. CONTACT INFORMATION

Updated contact information is provided below.

Lupin Mines Incorporated Karyn Lewis, General Administration	Telephone 778-386-7340	Fax
NT/NU 24 –Hour Spill Report Line	867-920-8130	867-873-6924
Nunavut Stephanie Autut, Executive Director, NWB GN Environmental Protection, Iqaluit	Telephone 867-360-6338 867-975-5910	Fax 867-360 6369 867-975-5980
Aboriginal Affairs and Northern Development Canada-Land Use and Water Use Baba Pedersen, Regional Officer, Kugluktuk Eva Paul, Water Resources Officer, Iqaluit	867-982-4306 867-975-4548	867-982-4307 867-975-6445
Environment Canada Marc Dionne, Enforcement Officer, Yellowknife	Telephone 867-669-4790; 867-446-0926	Fax 867-669-6831
Department of Fisheries and Oceans Eastern Arctic Area, Iqaluit	867-979-8000	867-979-8039
Other Useful Contacts Stanton Hospital Yellowknife Med Response Worker’s Safety and Compensation Commission 24-Hour Emergency RCMP Yellowknife Discover Mining Services Air Tindi Dispatch Yellowknife Ekati Mine Security (extra help if required)	867-669-4100 or 1-800-661-0867 844-633-9999 1-800-661-0792 867-669-1111 867-920-4600 867-880-8218 867-880-2201	