

**Stornoway Diamond Corporation
Final Plan - MIP2 Project
DIAND Land Use Permit #N2006C0011
Nunavut Water Board License 2BE-MIP0608**

The MIP2 Project consisted of 29 mineral claims totaling 74,557 acres which were recorded in the name of Stornoway Diamond Corporation on September 23, 2005.

The land use activities associated with this project operated under the authority of INAC Land Use Permit N2006C0011 (expired April 20, 2008), and Nunavut Water Board License 2BE-MIP0608 (expired April 30, 2008). This report will be submitted to both of the aforementioned regulatory agencies as a Final Plan detailing the activities conducted and the abandonment and restoration completed upon termination of the land use operation.

Summary of Land Use Activities

During the summer of 2006 a small drilling program took place which lasted for 3 weeks time, and totaled approximately 240 person days (population was reduced during mob/demob periods). A small temporary camp was set up to accommodate the 9 person crew, and was supported by both chartered fixed wing aircraft and an on-site helicopter.

Camp Facilities

Temporary camp facilities were established at UTM NAD83, Z18, 630665E/7220149N on July 16th, 2006 and camp was fully populated with 9 personnel by July 21st. The camp was inhabited for approximately 3 weeks time, with demobilization completed by August 16, 2006.

Please see the table below for a detailed description of the camp set up, and Appendix I of this plan for a figure of the camp layout.

MIP2 Camp Facility Coordinates			
Structure	NAD83_Z18_Easting_(m)	NAD83_Z18_Northing_(m)	Description
tent - 1*	630642	7220166	14' x 16' - sleeper for the drillers
tent - 2*	630651	7220163	12' x 14' - sleeper for the cook and helicopter pilot, also the 1st aid tent
tent - 3*	630659	7220157	12' x 14' - sleeper for the drill foreman and drill mechanic
tent - 4*	630666	7220152	12' x 14' - office tent, also the geologist's tent
tent - 5*	630673	7220146	14' x 20' - kitchen
tent - 6*	630678	7220144	14' x 16' - dry
garbage bin	630682	7220141	4' x 8'
sumps	630680	7220150	3 of these behind the dry : 1 for the kitchen, 1 for the showers, and 1 for the sink and washing machine
generator shack	630701	7220125	diesel powered, 2 drums diesel cached here

water source for camp	630655	7220115	lake is about 1 km long, 80 m wide, and trends roughly NW-SE, the water tank volume in camp is 1.01 m ³ (0.73 x 0.95 x 1.46 m)
airstrips for twin otter (centre point for both)	630843	7220065	2 airstrips, each about 400 m long : 1 trends NW-SE, the other N-S
heli pad	630790	7220153	
extra drill gear	630686	7220234	
outhouse & outhouse sump	630682	7220179	waste goes into sump underneath outhouse
fuel cache for camp	630775	7220162	10 drums JET, 9 diesel, extras to be cached in field
spill kit #1	630679	7220137	large spill kit, also 2 extra large rolls of matting here
spill kit #2	630775	7220159	large spill kit near JET fuel cache, also a fire extinguisher here
spill kit #3	-	-	large spill kit, travels with the drill

* coordinates for each tent are from the doorways, all tents faced roughly southwest

Drill Program

Drilling activities were all helicopter supported, and lasted for approximately 3 weeks time, with an average of 2 to 3 days spent at each site.

Following please find a table listing the locations of the drill water return and/or cutting disposal sites associated with the land use operation.

Latitude WGS84			Longitude WGS84		
<i>Deg</i>	<i>Min</i>	<i>Sec</i>	<i>Deg</i>	<i>Min</i>	<i>Sec</i>
65	14	41	-72	0	17
65	15	24	-71	56	13
65	11	51	-72	1	27
65	12	41	-72	0	43
65	12	1	-71	51	29
65	12	15	-71	53	30
65	10	33	-71	55	24
65	8	32	-71	59	41

Abandonment and Restoration

As per the Abandonment and Restoration Plan for the program all drill sites were restored to their previous conditions immediately upon the completion of each hole. Returned water from the drilling operations and any cuttings that were produced were pumped into nearby natural depressions or sumps.

The three greywater sumps established for the deposit of kitchen/domestic waste water and the one latrine pit constructed to support the camp were all backfilled upon demobilization and abandonment of the camp facilities.

All tent frames, equipment and fuel drums were removed from the camp area upon abandonment, leaving little to no evidence of the land use operation.

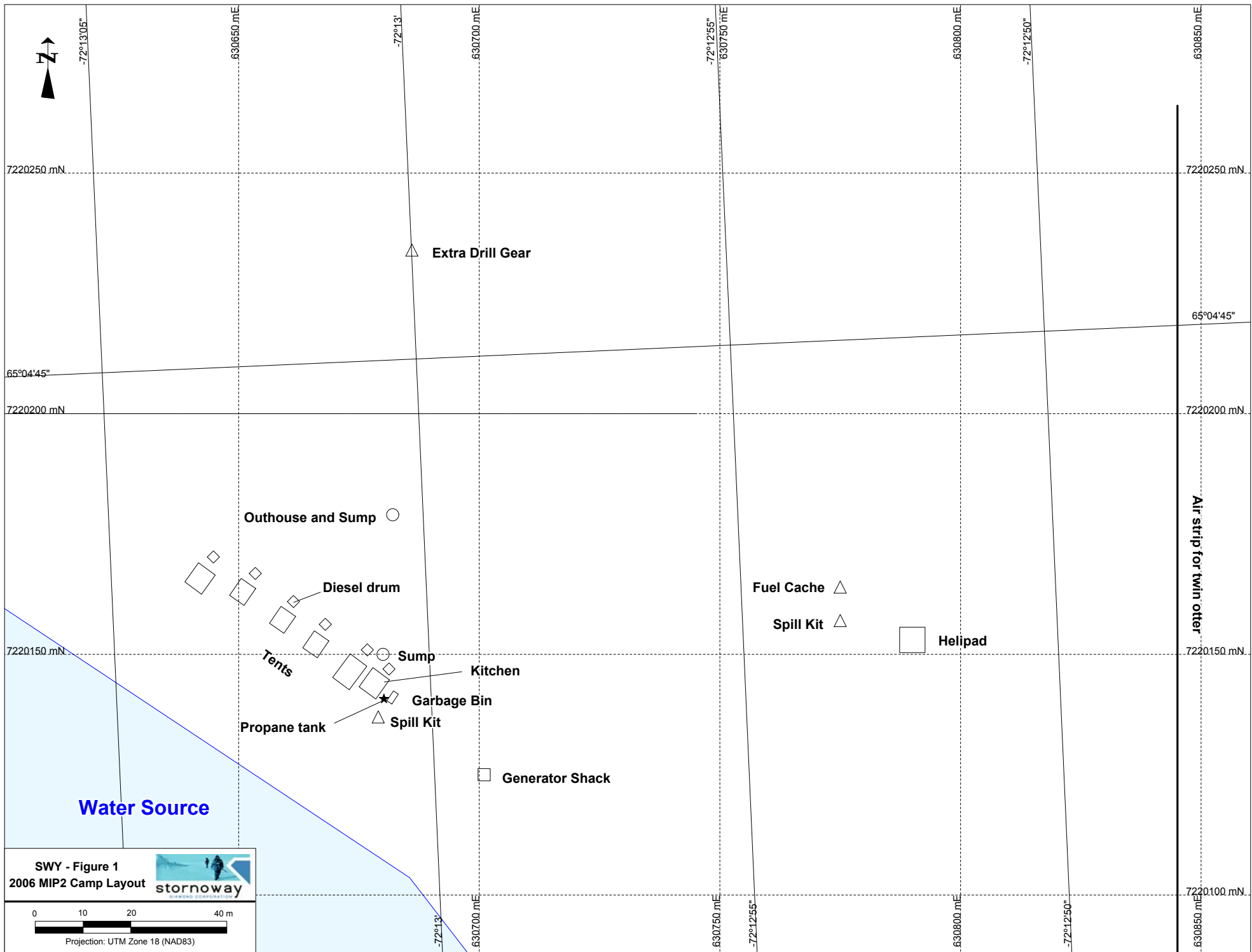
Please see Appendix III for photographs of the area taken upon completion of the restoration activities.

Inspections

An inspection report was received from Kevin Robertson, Resource Management Officer III, subsequent to his inspection of the land use area on July 14, 2007 which indicates that file closure for Land Use Permit N2006C0011 is recommended.

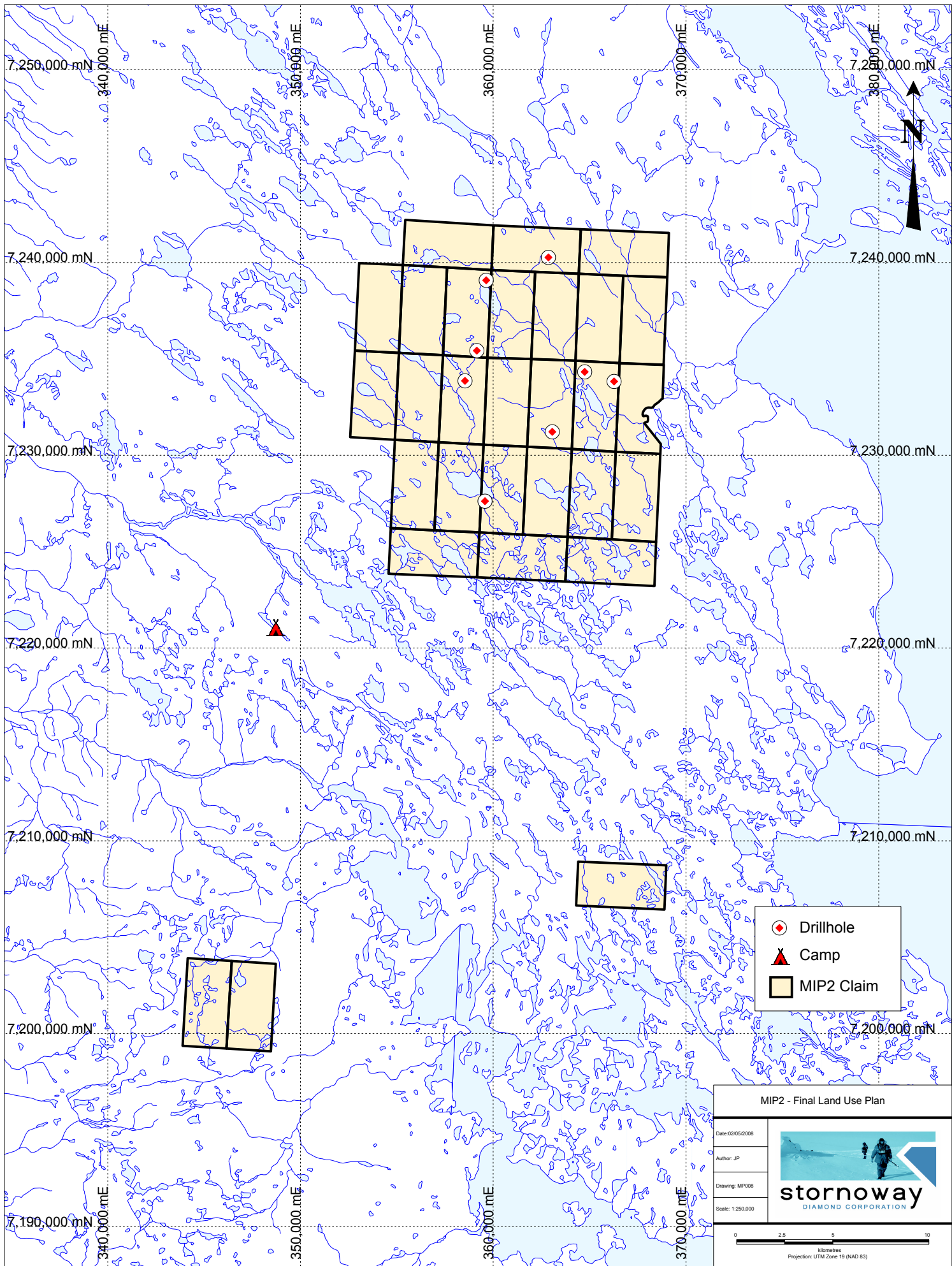
APPENDIX I

Figure – Camp Schematic



APPENDIX II

Figure – Land Use Area



APPENDIX III

Photographs – Abandonment and Restoration



The 3 Greywater Sumps During Use



The 3 Greywater Sumps After Restoration Activities Were Completed



Outhouse Facilities (Latrine Pit)



Latrine Pit After Restoration Activities Were Completed



Camp Airstrip After Restoration Activities Completed