

ENVIRONMENTAL MANAGEMENT PLAN

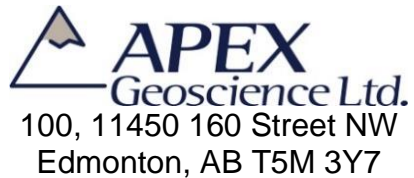
MUSKOX NICKEL PROPERTY NUNAVUT, CANADA

Prepared for:



1351C, Kelly Lake Road, Unit 9
Sudbury, Ontario P3E 5P5

Prepared by:



Effective Date: January 1, 2023

Contents

1	Introduction	1
1.1	Contact Details	1
1.2	Purpose and Scope	1
1.3	Environmental Policy	1
1.4	Other Plans	2
1.5	Property and Camp Description	2
2	Applicable Legislation and Guidelines	3
2.1	Federal	3
2.2	Territorial	4
3	Environmental Protection Measures	4
4	Stakeholders	4
4.1	Archaeological or Paleontological Sites	4
5	Identification of Potential Impacts and Proposed Mitigation Measures	6
5.1	Designated Environmental and Socio-Economic Areas	6
5.2	Wildlife Disturbance Mitigation	6
5.2.1	Wildlife and Habitat	6
5.2.2	Caribou Mitigation and Monitoring	7
5.2.3	Species at Risk	9
5.2.4	Migratory Birds	10
5.2.5	Firearms	10
5.3	Vegetation, Soil and Permafrost Disturbance Mitigation	11
5.4	Air and Noise Quality	11
5.5	Drilling Operations	12
6	Hazardous Materials	12
7	Waste Management Planning	12
8	Abandonment and Restoration	13

Appendices

Appendix 1: Figures	AT END
Appendix 2. GN-DoE Staff Directory	AT END

1 Introduction

This Environmental Management Plan (“EMP”) has been developed on behalf of SPC Nickel Corp. (“SPC” or the “Company”) in accordance with applicable legislation, guidelines and best practices. This EMP applies to the activities associated with the Muskox Nickel Property (the “Property” or “Project”), Nunavut, Canada.

The EMP will come into effect January 1, 2023, pending approval from all relevant regulatory bodies. Copies and updates to this plan may be obtained via the Company or APEX Geoscience Ltd. (“APEX”). The EMP will be replaced, upon approval, if there are any significant changes to the activities outlined in the existing permits which warrant changes to the EMP. Minor changes will be submitted as an addendum to the EMP and submitted to the distribution list as required.

1.1 Contact Details

SPC Nickel Corp.

1351C, Kelly Lake Road, Unit 9
Sudbury, Ontario P3E 5P5
Tel: (705) 669-1777
www.spcnickel.com

APEX Geoscience Ltd.

100, 11450 160 Street NW
Edmonton, AB T5M 3Y7
Tel: (780) 467-3532
www.apexgeoscience.com

1.2 Purpose and Scope

The purpose of the Muskox Nickel Property EMP is to outline the companies’ environmental policy, and to address environmental issues related to exploration at the Property. The plan includes the following:

- A summary of regulatory requirements.
- An overview of Property environmental protection measures.
- A discussion of stakeholder issues, including procedures for dealing with anthropological or archaeological sites.
- Possible disturbances to land, flora, and fauna related to exploration.
- Wildlife management practices and appropriate use of firearms.
- Environmental requirements for diamond drilling.
- Hazardous material handling and waste management practices.
- A summary of abandonment and restoration plans.

Emergency response guidelines are beyond the scope of this plan. In the event of an environmental emergency, personnel will defer to the Muskox Nickel Property “Emergency Response Plan” and “Spill Contingency and Fuel Management Plan” for guidance.

1.3 Environmental Policy

SPC is firmly committed to the protection and conservation of the natural environment, and to ensure the health and safety of all employees, contractors, and people in surrounding communities. The environmental policy for the Property is to:

- Develop the project in a socially and environmentally responsible manner.
- Fully comply with all applicable environmental legislation and regulations.
- Work in cooperation with federal, territorial, and local governments, as well as other relevant regulatory bodies, and the general public, on all aspects of environmental protection and policy.
- Assess and mitigate any potential environmental impacts and minimize risks to the health and safety of all employees, contractors, and the general public.
- Ensure contractors operate according to the Property environmental policies and procedures.
- Employ an emergency response plan to reduce impacts of unforeseen events.
- Provide ongoing instruction on the Property's environmental policies and spill prevention and response plans for all employees and contractors.
- Keep employees, contractors, inspectors, government, and regulatory bodies informed of any changes at the site or with project activities.

1.4 Other Plans

The EMP should be considered as a part of the property wide management system. Other management plans in place at the Property include:

- Abandonment and Restoration Plan (ARP)
- Emergency Response Plan (ERP)
- Spill Contingency and Fuel Management Plan (SCFMP)
- Waste Management Plan (WMP)

1.5 Property and Camp Description

The Muskox Nickel Property (the "Property" or the "Project"), owned and operated by SPC Nickel Corp. ("SPC" or the "Company"), consists of 27 mineral claims covering 34,959 hectares and 2 prospecting permits covering 30,350 hectares. The Property is separated into a North Block, located on National Topographic System ("NTS") map sheets: 86O03 and 86J14 and centred at 574,500mE, 7,427,000mN, North American Datum 1983 ("NAD83" Universal Transverse Mercator ("UTM") Zone 11, and a South Block, located on NTS map sheets: 86J02, 86J06, 86J07, 86J10 and 86J11 (centred at 591,600mE, 7,373,000mN, NAD83 Zone 11). The North Block is located approximately 100 km south of the Hamlet of Kugluktuk and partially overlaps Inuit Owned Land ("IOL") surface parcels CO-52 and CO-60. The south block, located entirely on Crown land, is approximately 20 km south of the North Block and extends to the Nunavut - Northwest Territories border.

SPC proposes annual exploration programs which include general exploration activities such as geological mapping, prospecting, geochemical sampling (rock, soil and till), geophysical surveys (airborne and ground) and diamond drilling of approximately 5,000 m. Annual programs are anticipated to commence approximately April 1 and run until September 30.

The 2023 exploration program will include the establishment of a seasonal 20 person exploration camp with fuel cache to be constructed in one of 2 possible locations. The current potential locations are near Stanbridge Lake (66°52'51.088"N, 115°3'29.673"W) or near Marceau Lake (66°25'30.123"N, 114°59'1.726"W). Structures for the proposed camp will include 10 sleeper tents, 1 medical tent, 1 kitchen, 1 dry (with showers), 1 office tent, core shack, generator shack, incinerator and outhouses/pacto systems. The majority of the structures will be insulated Weatherhaven tents, or similar, with plywood floors.

General exploration activities on IOL surface parcels CO-52 and CO-60 are currently authorized by Kitikmeot Inuit Association ("KIA") Land Use Licence KTL122B004. SPC is currently applying for a Land Use Permit ("LUP") from Crown-Indigenous Relations and Northern Affairs Canada ("CIRNAC") and a Nunavut Water Board ("NWB") water licence to authorize the proposed seasonal camp and drilling. SPC is also applying to amend KIA Land Use Licence KTL122B004 to include diamond drilling on IOL.

The proposed work will be helicopter supported and require the occasional landing of the aircraft. In order to mitigate any potential impact on wildlife, the helicopter will always maintain a minimum altitude of 610 m (2,100 ft) above ground level except during landing, take-off or if there is a specific requirement for low level flying (e.g. airborne surveys). Wildlife will be avoided and the helicopter will not land in the presence of wildlife except in an emergency.

Absolutely no activities will be conducted that will interfere with caribou cows and calves, and no exploration activities will cause a diversion in the migration patterns of any caribou. SPC will communicate with the Kitikmeot Inuit Association ("KIA") and any other interested parties, regarding caribou sightings and appraised movements in the area.

Consultation with the Hamlet, Hunters and Trappers Organization and public of Kugluktuk is currently being planned to be completed prior to the next field program.

2 Applicable Legislation and Guidelines

Exploration at the Property will be conducted in accordance with various Acts, Regulations, Guidelines, and Recommendations including, but not limited to:

2.1 Federal

- Canadian Environmental Protection Act
- Canada Wildlife Act
- Fisheries Act
- Nunavut Waters and Nunavut Surface Rights Tribunal Act
- Public Health Act
- Species at Risk Act
- Territorial Lands Act
- Nunavut Land Claims Agreement
- Department of Fisheries and Oceans Canada Operational Statements

- Guidelines for Spill Contingency Planning (INAC)
- Migratory Birds Convention Act

2.2 Territorial

- Nunavut Environmental Protection Act
- Nunavut Wildlife Act
- Caribou Protection Plan / Caribou Protection Measures
- Environmental Guideline for the Burning and Incineration of Solid Waste

3 Environmental Protection Measurers

Exploration activities at the Property will be assessed for environmental impact risks and every measure available will be taken to ensure the protection and preservation of the natural environment. For the duration of the program, all activities will be documented and sites photographed to comply with environmental due diligence. All on-site employees and contractors will be provided with environmental training, and will become familiar with relevant regulations. The Project Supervisor will be responsible for implementing environmental policies and training, and managing the environmental monitoring program.

Environmental training, monitoring, reclamation, and site clearance surveys will be built in to the program budget to ensure adequate resources are being allocated to environmental management. Preference will be given to contractors with high standards of environmental stewardship, and who have a proven track record of sound environmental practice.

4 Stakeholders

Stakeholders may be individuals or groups concerned with, or affected by, exploration activities at the Property. Stakeholders will be identified and consulted with for the duration of the exploration program. Approvals will be sought from stakeholders and regulatory bodies pertaining to relevant environmental, social, and cultural issues. A portion of the Property lies on an area of Traditional Landuse as defined by the Nunavut Planning Commission in the Draft Nunavut Land Use Plan. Prior to any large scale exploration programs or drilling SPC will conduct community consultations in order to incorporate any Inuit Qaujimajatuqangit into the project planning and design and to address any outstanding issues or concerns.

In addition to consulting with community members, whenever possible, SPC will attempt to hire local residents to assist in many aspects of the project such: as wildlife and environmental monitors, camp management assistants, core cutting/processing technicians and geo-technical assistants to not only utilize their skilled labor, but extensive knowledge of the land and wildlife.

4.1 Archaeological or Paleontological Sites

No archaeological or paleontological studies were done on the Property date.

During the 2022 helicopter-supported field visit to the Property, no archaeological or palaeontological sites were observed on the Property.

Actions will be taken to ensure that any known or undocumented archaeological or palaeontological sites or artifacts are not disturbed. These include, but are not limited to:

- No company staff, contractors or project visitors will operate any vehicle over a known or suspected archaeological or palaeontological site.
- No company staff, contractors or project visitors will remove, disturb, or displace any archaeological artifact or site, or any fossil or palaeontological site.
- The company will immediately contact the Nunavut Department of Culture and Heritage (“CH”) at (867) 934-2046 or (867) 975-5500 should an archaeological site or specimen, or a palaeontological site or fossil, be encountered or disturbed by any land use activity. A report will be prepared documenting the discovery and sent to CH and CIRNAC. Reports will include GPS coordinates, a brief description of the site and/or artifact and photos (if possible).
- Company staff, contractors or project visitors will immediately cease any activity that may disturb an archaeological or palaeontological site if encountered during the course of a land use operation until permitted to proceed with the authorization of CH.
- Company staff, contractors or project visitors will follow the direction of CH and CIRNAC in restoring disturbed archaeological or palaeontological sites to an acceptable condition.
- Company staff, contractors or project visitors will provide all information requested by CH concerning all archaeological sites or artifacts and all palaeontological sites and fossils encountered in the course of any land use activity.
- When conducting geochemical sampling, geological mapping, prospecting, ground geophysical surveys and drilling all relevant field personal will have maps with all known sites marked.
- Before commencing any work where ground disturbance may occur, the area will be surveyed for any archaeological or paleontological sites.
- Building of inuksuk is prohibited.
- SPC will ensure that all persons working under its authority are aware of these conditions concerning archaeological sites and artifacts and palaeontological sites and fossils.

Nunavut Department of Culture and Heritage:

Phone: 867-975-5500

Fax: 867-975-5504

CIRNAC Nunavut Environment Manager:

Phone: 867-975-4549

5 Identification of Potential Impacts and Proposed Mitigation Measures

5.1 Designated Environmental and Socio-Economic Areas

The Property is not located within any federal or territorial Protected Areas, as defined by Environment and Climate Change Canada. The nearest Park to the Property is the Kugluk Territorial Park located 70 km north of the North Block of the Property. The Thelon Game Sanctuary is located 430 km to the southeast from the South Block of the Property and the Ahiak Migratory Bird Sanctuary located 430 km northeast from the South Block of the Property.

Majority of the North and South Blocks of the Property overlie the Coppermine/ Kugluktuk River. The Canadian Heritage River System and Canada's National River Conservation Program states that:

"The Coppermine River has been nominated but has not yet been fully designated as a Canadian Heritage River. Once it is fully designated, it will be managed jointly through a collaboration of several community partners, which is coordinated by Nunavut Parks and Special Places, a division of the Government of Nunavut."

Once the Coppermine/ Kugluktuk River is designated as a Canadian Heritage River, SPC will adhere to policies and regulations set by the Nunavut Parks and Special Places, Government of Nunavut.

Majority of the Property is within the Kugluktuk community drinking water supply. SPC recognizes the area as highly sensitive and every measure available will be taken to ensure the protection and preservation of the natural environment.

5.2 Wildlife Disturbance Mitigation

5.2.1 Wildlife and Habitat

All interaction with wildlife is discouraged; however, employees and contractors will be trained in the appropriate actions to take when encountering wildlife in the field. Intentionally approaching, disturbing, or feeding wildlife is strictly prohibited. Any incidents will be thoroughly investigated and disciplined. All wildlife, and their dwelling sites, will be respected and efforts will be made to avoid them. All personnel will be required to record any wildlife sightings and will be instructed on the appropriate action to take when encountering wildlife in the field.

Animal sightings will be recorded in the "Wildlife Record Log" and reported to NIRB, CIRNAC and the NWB as part of the Annual Reports. If any wildlife enters any of the area of operations at the Property, protection measures will be followed and operations will be halted until the animal has moved out of the vicinity. Any bears or nuisance wildlife will be immediately reported to the Project Field Supervisor, CIRNAC and the Government of Nunavut Department of Environment ("GN-DoE"). Wildlife contacts for the Property are listed in Table 5.1. The GN-DoE Staff Directory is located in Appendix 2.

Table 5.1. Wildlife Contacts

Organization	Title	Contact	Location	Telephone Number
Nunavut Department of Environment	Kitikmeot Regional Wildlife Manager	Kevin Methuen	Kugluktuk	(867) 975-7441
Nunavut Department of Environment	Kitikmeot Regional Coordinator	Gerry Atatahak	Kugluktuk	(867) 982-7443
Nunavut Department of Environment	Regional Wildlife Biologist	Lisa-Marie Leclerc	Kugluktuk	(867) 982-7444
Nunavut Department of Environment	Environmental Protection	Randy Hinanik	Kugluktuk	(867) 982-7483
Nunavut Department of Environment	Conservation Officer	Russell Akeeagok	Kugluktuk	(867) 982-3058
Nunavut Department of Environment	Conservation Officer III	Allen Niptanatiak	Kugluktuk	(867) 982-7451
Kugluktuk Hunters & Trappers Organization				982-4908

General exploration activities at the Property such as geochemical sampling, geological mapping, prospecting and airborne/ground geophysical surveys are generally very low impact. Geochemical sampling and geological mapping require no mechanized equipment and ground geophysical surveys do not require the use of any sizable or noisy machinery. Drilling activities may cause noise disturbances to passing animals, but care will be taken to located drillpads away from any wildlife nests or dwellings. There is also the potential for a fuel or oil spill at the camp or drill sites. Policies and procedures outlined in the Muskox Nickel Property “Spill Contingency and Fuel Management Plan” will be followed at all times to mitigate the chance of a spill.

Aircraft support is required to carry out daily operations at the Property. Helicopter support will be required for daily operations in including pick up/drop off of field personnel and drill rig and fuel moves. Possible impacts that may arise from the use of aircraft include fuel spills, and noise disturbance. When low altitude flights are necessary, such as deploying field personnel, all efforts will be taken to avoid wildlife, dwellings, and nests. Pilots will be instructed not to land where wildlife is present unless it is an emergency situation. If a landing occurs for any reason in the presence of wildlife, it will be documented and submitted to NIRB, CIRNAC and the NWB in the Annual Reports.

Appropriate screens will be placed over all water intakes at camp and at the drill in order to reduce the potential for fish entrapment.

5.2.2 Caribou Mitigation and Monitoring

The Kitikmeot Region, where the Property is located, does not currently have caribou mitigation measures therefore, SPC will implement the Mobile Caribou Conservation Measures outlined by the Kivalliq Region at the Property. Along with the current practice of Project planning consultations, incorporation of Inuit Qaujimaningit into the Project planning, frequent communication with the Kugluktuk Hunters & Trappers Organization (“HTO”), Kugluktuk community and hiring local community members (approved by the

Kugluktuk HTO) as wildlife monitors will assist the company in greater disturbance mitigation.

Surveillance and monitoring procedures used to detect and alert the presence of wildlife at the Property include:

- Early morning wildlife monitor helicopter surveillance flights.
- Use of the helicopter for surveillance while in transit (e.g., field personnel deployment, shift changes, etc.).
- Communication with the Kugluktuk HTO and local community members regarding wildlife sightings in the area.
- Monitoring of Social Media posts regarding sightings in the area.

Other measures will be followed to mitigate potential impacts on any Caribou that are present on the Property will include, but not be limited to, the following:

- Caribou avoidance will always be the priority mitigation measure.
- Whenever possible, drilling activities will be planned to avoid caribou.
- Local community members will be employed as wildlife monitors.
- All sightings of caribou will be reported to the Project Field Supervisor, included in the report will be the number of caribou and distance from camp or work site, their approximate numbers, direction of movement and general behaviour.
- Wildlife reports, containing information on sightings and interactions of all wildlife, denning sites, raptor nests and any work suspensions will be included in the Annual Reports submitted to NIRB, KIA, CIRNAC and the NWB.
- SPC will establish a caribou alert system to alert personnel of the number and distance of caribou from camp, drill sites, and mapping, prospecting or sampling areas.
- Aircraft will always maintain a minimum altitude of 610 m (2,100 ft) above ground level except during landing, take-off or if there is a specific requirement for low-level flying (e.g. airborne surveys).
- All flights lower than 610 m above ground level (e.g. airborne surveys) will be suspended, when safe to do so, in the presence of caribou cows and calves.
- SPC will not construct or operate any camp, cache any fuel or conduct blasting within ten (10) kilometres, or conduct any drilling operation within five (5) kilometres of any paths or crossings known to be frequented by caribou (e.g., designated caribou crossings).
- Activities will be suspended if concentrations of caribou (50 or more) approach within 2 km of drilling operations. Activities will not resume until all of the caribou have moved out of the area.
- A 1 km buffer zone will be used as a measure of a safe distance for working in areas where caribou (less than 50) are present. If caribou come within 1 km of any work site, work activities will immediately cease until the caribou have moved safely beyond the buffer zone.
- Absolutely no activities will be conducted that will interfere with caribou cows and calves. All activities that may interfere with caribou cows and calves will cease.

- SPC will ensure that absolutely no exploration activities will cause a diversion to the migration patterns of any caribou.
- SPC will communicate with the Hamlet of Kugluktuk, the Kugluktuk HTO, the local community (through social media) and any other interested parties regarding caribou sightings and appraised movements in the area.

5.2.3 Species at Risk

- SPC recognizes that with any project, there is a potential for activities to negatively affect wildlife, and of greatest concern, affect species at risk. Although all wildlife will be protected and treated with respect during all activities at the Property, special consideration will be given to the species identified below. All observations of wildlife will be recorded will be included in the Annual Reports submitted to NIRB, CIRNAC and the NWB. Any human-wildlife interaction will be reported immediately.

Peregrine Falcon, anatum/tundrius complex, Red-necked Phalarope and Short-eared owl– Special Concern (SARA)

- Raptor, Red-necked Phalarope and Owl nests, as well as all birds, their nests and eggs will always be avoided during exploration activities.
- Any observed nests will be recorded and included in the wildlife record submitted annually
- All staff, contractors and project visitors will be trained to never approach or disturb nests
- All staff, contractors and project visitors will be trained on how to identify Red-necked Phalarope nests via descriptions provided by Environment Canada and photos.
- Excessive hovering or circling over areas likely to have birds will be avoided
- Any nest found will be recorded, photographed and reported to the Gov-NU Ecosystems Biologist. In the case of the Red-necked Phalarope, Environment and Climate Change Canada will be notified as well.
- The Gov-NU Ecosystems Biologist will be asked to advise on the establishment of an appropriate buffer zone, determined by the species and the surrounding habitat, to protect it until the young have naturally left the nest.

Grizzly Bear, Wolverine and Transverse Lady Beetle – Special concern (COSEWIC)

- All SPC, staff, contractors and project visitors will be properly trained in wildlife disturbance mitigation, including deterrent and interaction measures
- Proper measures will be taken in camp, at drill sites and in the field to reduce the attraction of wildlife including proper storage and handling of food and waste
- All bears, wolverines and other wildlife, as well as their dens, will be avoided at all times by field crews
- Any observations of bears, wolverines or Transverse Lady Beetle will be recorded and submitted with the annual report and any human-wildlife interaction will be reported immediately.

5.2.4 Migratory Birds

SPC has implemented the following mitigation measures to prevent potential impacts on migratory birds. All SPC employees, contractors and visitors will be instructed and must strictly adhere to the following:

- All staff, consultants and Property visitors will be educated in, and comply, with all applicable legislation and regulations.
- All wildlife, including birds and their dens and nests will be respected
- Approaching any wildlife, including birds or nests will be strictly prohibited.
- Never destroy nests or eggs of any birds.
- Avoid disturbing nests and known concentrations of birds by maintaining a 1.5 km buffer when in transit by aircraft.
- Avoid approaching known nests while on foot.
- Attempt to prevent birds from nesting on man-made structures.
- Minimize flights during migration, nesting and moulting.
- Avoid areas used by flocks of migrating waterfowl by 3 km.
- Avoid excessive hovering or circling over areas likely to have birds.
- SPC prohibits depositing substances harmful to migratory birds into waters.
- Migratory bird observations will be included in the Wildlife Observation logs and submitted with the annual reports
- Any inadvertent disruption of migratory birds, nests or eggs will be immediately reported.
- Special care and concern, including monitoring will take place during migratory bird nesting periods in the area (mid-May – mid-August).
- Any nest found will be recorded, photographed and reported to the Gov-NU Ecosystems Biologist. The government biologist will be asked to advise on the establishment of an appropriate buffer zone, determined by the species and the surrounding habitat, to protect it until the young have naturally left the nest.

5.2.5 Firearms

Registered 12 gauge shotguns will be located in camp and at drill sites to ensure the safety of all personnel on the Property. 12 gauge shotguns are the preferred firearm to be used for the purposes of bear deterrence as they are capable of firing non-lethal deterrents and lethal rounds. All firearms in camp will be stored unloaded and be regulated by the Project Supervisor. Firearms at drill sites will be stored unloaded in gun cases.

All persons carrying or handling a firearm must have a valid Firearms License and be approved by the Project Supervisor. Hunting is strictly prohibited for all employees and contractors, and will result in immediate termination and potential charges for any territorial hunting violations. Firearms discharge of any kind must be reported immediately to the Project Supervisor. Use of firearms against nuisance or aggressive wildlife is considered only as a last resort. Non-lethal deterrents will always be used whenever possible to deter problem wildlife with lethal rounds only being used in defence of life or property.

5.3 Vegetation, Soil and Permafrost Disturbance Mitigation

Vegetation at the Property consists mainly of moss, lichens, stunted plants and Arctic grasses. The grasses are typically observed growing at lower elevations in areas associated with river drainage basins.

Vegetation and permafrost can potentially be impacted by camp and drilling activities. Mitigation measures to reduce the impact include limiting the amount of vegetation disruption to ensure proper shade coverage and reduction in the potential for ground thaw and subsidence. Footpaths can be marked using stakes and flagging tape to ensure that impacts to vegetation are confined to a small area or boardwalks can be built between camp buildings to reduce damage to vegetation on high-traffic footpaths. Areas that have patterned ground, clay-rich soil and or wetlands will be avoided. Heat radiating from camp buildings may thaw permafrost, so all heated camp structures will be slightly elevated above the ground to allow air circulation. Earth may be required to be moved in order to construct sumps in camp and at drill sites; however natural depressions and areas free of vegetation will be used whenever possible. Any topsoil moved will be collected to use in re-vegetation efforts. If a sump is excavated, it will be barricaded until it can be back-filled.

Soil quality can be impacted from spills of fuel and other materials and waste discharge. Preventative measures include appropriate and approved storage locations and containers with secondary containment. All fuel, hazardous materials and drilling will be a minimum 31 metres away from any watercourses. Refueling will be done with precision and appropriate due-diligence will be taken. Drums and hoses will be inspected regularly for leaks and pans or absorbent pads will be placed below fuel transfer areas and stationary machinery. See the Property “Spill Contingency and Fuel Management Plan” for more information.

5.4 Air and Noise Quality

Impacts on air quality can result from discharge of exhaust from airplanes, helicopters, drilling operations and diesel generators, as well as emissions from incineration. Given the remote location with lack of air quality issues which currently exists within the Property location, the short duration and small scope of activities are not expected to result in any measurable air quality impacts. The camp will utilize an Environment Canada approved batch waste, controlled air, dual chamber incinerator to incinerate waste, therefore reducing harmful emissions. Incinerator ash will be stored in sealed containers and back-hauled to an accredited facility.

Noise can result from the use of planes, helicopters and drills and to a lesser degree from activities within the camp, which can disturb wildlife. Mitigation measure include, but not be limited to: helicopter avoidance of any raptor nests, bear dens and wolf dens, waterfowl and shorebird staging areas during critical seasons and near large mammals. In addition drill activities and associated work will cease if caribou cows and/or calves appear nearby.

5.5 Drilling Operations

Drilling contracts will be awarded to companies that exhibit high standards of environmental practice and who are willing to adhere to the environmental policies of the Property. The following conditions are imposed for drilling activities:

- Sites will be as small as possible while still allowing adequate area for fire protection.
- All stored fuel and drill additives will be stored in secondary containment.
- Biodegradable drill additives will be used whenever possible.
- Recirculation and filtration equipment will be used to minimize the amount of water used and additives released into the environment. Secondary containment for additives will be placed around the hole.
- Any residual drill water will be contained in sumps. Sumps will be positioned down slope from the drill collar in such a manner that runoff flows into the sump. Sumps will be positioned a minimum of 31 metres from the normal high water mark of any water body.
- If any artesian water flow is detected, the hole will be plugged and cemented in bedrock to prevent continued flow. Any artesian water flow will be reported to CIRNAC and the Nunavut Water Board.

6 Hazardous Materials

All hazardous materials will be handled and stored in accordance with the Muskox Nickel Property “Spill Contingency and Fuel Management Plan.” Fuels and other hazardous materials will be stored within “Arctic Insta-Berms”, or similar products, for secondary containment. Hazardous material storage sites will be located a minimum of 31 metres from the normal high water mark of any water body. Electric or hand wobble pumps equipped with filtration devices will be used for the transfer of diesel, jet fuel, and gasoline from their storage containers directly to their end-use fuel tanks. Portable drip trays or mini-berms will be used to mitigate the risk of any spillage, and fully stocked spill kits will be available at all refueling stations, drill sites, and at various locations throughout camp.

All hazardous materials will be clearly labeled in accordance with the Workplace Hazardous Materials Information System (“WHMIS”) and other applicable legislation. Labels will include, but not limited to, the type of fuel, safe handling procedures, reference to Material Safety Data Sheets (“MSDS”), company name, and the date of delivery to site. Signs with the same information, along with MSDS for each fuel type will be posted at each hazardous material storage or transfer site. “No Smoking” signs will be posted at each fuel cache, drill site, and fuel transfer area.

All personnel required to handle hazardous materials will be trained in WHMIS, the Transportation of Dangerous Goods Act, and the Muskox Nickel Property “Spill Contingency and Fuel Management Plan” and “Emergency Response Plan”.

7 Waste Management Planning

All wastes will be handled and disposed of in accordance with the Muskox Nickel Property “Waste Management Plan” and will comply with federal and territorial legislation. Waste management operations at the Property comprise a number of activities with the common

goal of reducing the amount of waste generated on site and to ensure that any wastes created are reused, recycled, or disposed of in a responsible manner. Wastes will be separated at the source into a number of categories including: materials for incineration, inert recyclables, inert non-combustible materials, and hazardous materials.

Combustible waste will be incinerated in a batch feed dual-chamber controlled air incinerator, in accordance with the *Environmental Guideline for the Burning and Incineration of Solid Waste* by the Nunavut Department of Environment and the *Canada-Wide Standards (CWS) for Dioxins and Furans* by the Canadian Council of Ministers of the Environment. All attempts will be made to reduce the moisture content of waste to be incinerated, which will decrease the amount of smoke produced and increase the completeness of combustion. All waste will be covered and stored inside sheds or other secure buildings to keep rain and snow out of the waste and reduce the attraction for wildlife. If wet waste must be burned, such as organic (food) waste, the wet waste will be mixed with dry waste to reduce the overall moisture content of the batch.

All inert materials that cannot be incinerated will be placed in appropriate sealed containers and removed from site for reuse, recycling or proper disposal at an accredited facility.

All hazardous wastes will be sealed in appropriate containers, labelled, documented and removed from site for proper disposal at a licensed disposal facility. A waste manifest will accompany hazardous waste in transit and all parties involved will be properly accredited.

Camp greywater will be stored and treated in an excavated sump, which will allow for slow infiltration into the soil and will be located at least 31 m away from a water body. If available, coarse gravel will be placed in the bottom of the sump to provide filtration, and supports will be built on the sides to prevent slumping. Filters will be installed on kitchen drains to ensure solid food wastes do not enter the sumps and have the potential to attract wildlife. Sump will be monitored to ensure they maintain an adequate freeboard at all times. Sumps and pipe will be inspected at regular intervals for leaks or overflow. When full, greywater sumps will be covered with enough material to allow for future ground settlement.

Privy pits (outhouses) and/or pacto facilities will be located at least 31 m away from any water body. To control sewage pathogens, outhouses will be periodically treated with lime. When full, the pits will be covered with at least 30 cm of compacted soil. Pacto waste will be incinerated with incinerator specifically designed for that waste type. Ashes from incineration will be removed and taken to approved disposal site

8 Abandonment and Restoration

Prior to land use permit, claim or lease termination, all structures, equipment, supplies, fuel, and wastes will be removed from the Property with the exception of core box stacks, which will be permanently secured on site. Materials of value will be salvaged. Local businesses and residents will have the opportunity to salvage any remaining materials that will otherwise be disposed of. Any contaminated areas around the camp or drill sites that have gone unnoticed will be treated as per the Muskox Nickel Property "Spill

Contingency and Fuel Management Plan.” A thorough inspection of all areas of activity will be conducted, and photographs will be taken to include in the final reports submitted to the Water Resource Inspector and as part of the Annual Reports submitted to NIRB, CIRNAC and the NWB. All relevant regulatory agencies will be notified once the final clean-up has concluded.

Any wooden floors will be burned in accordance with the Nunavut Environmental Guideline for the Burning and Incineration of Solid Waste. The open burning of structures will only occur after approval from CIRNAC and the NWB. A request letter will be submitted to the regulating authorities, which will include the characteristic and volume of material to be burned.

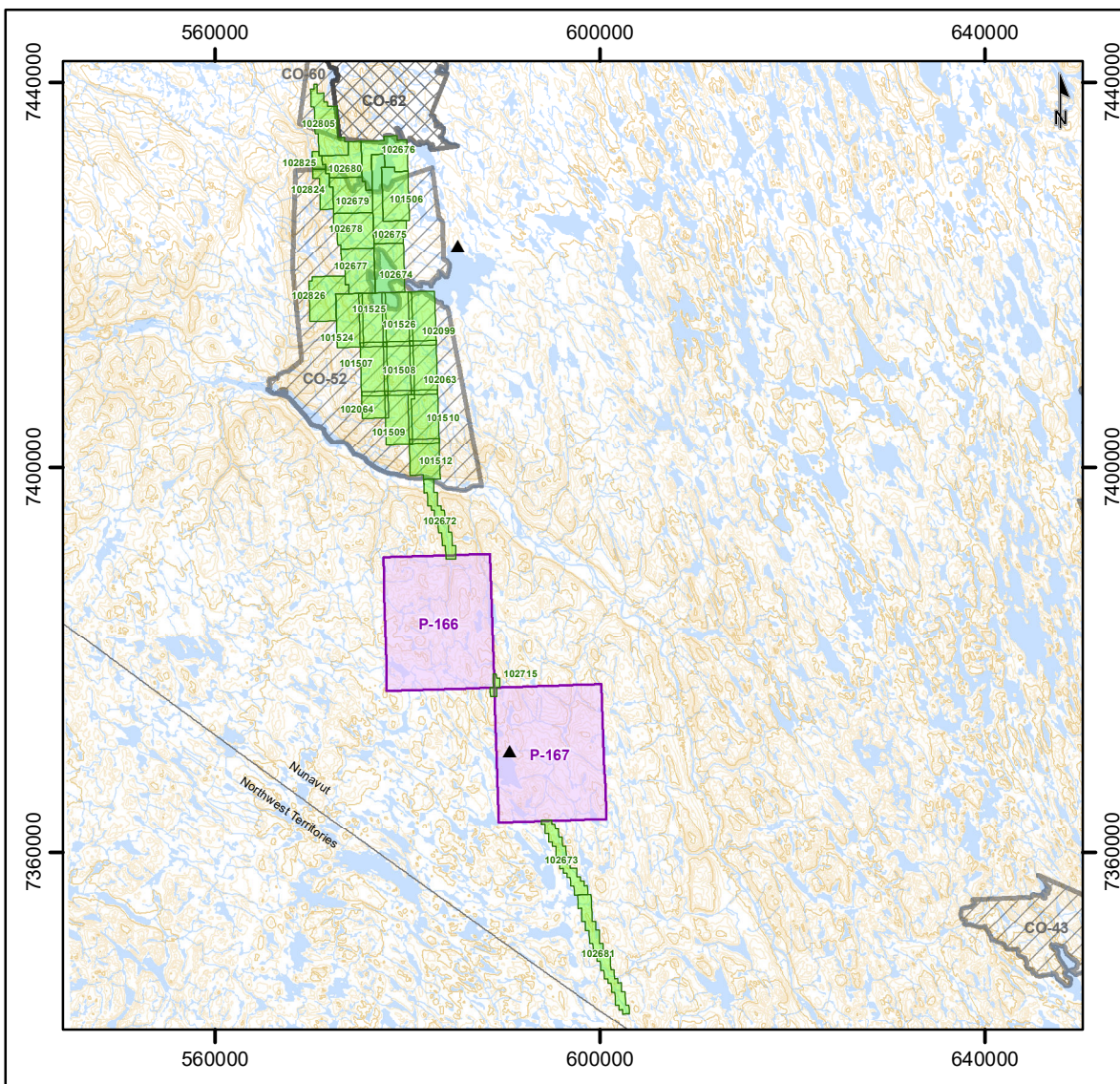
Areas disturbed by activities related to exploration at the Property will be fertilized, if recommended by the CIRNAC Inspector, to encourage re-vegetation. Any eroded or washed out areas related to exploration activities will be filled and re-contoured to natural levels.

After site reclamation is complete, annual monitoring may occur. The monitoring may include soil and water testing, measuring and documenting plant re-growth, examining potential run off and erosion problems, and checking the stability and condition of core racks and boxes. Reports, including photographs, will be submitted to all appropriate regulatory bodies.

Further details on abandonment and restoration can be found in the Muskox Nickel Property “Abandonment and Restoration Plan”.

Appendix 1

Figures

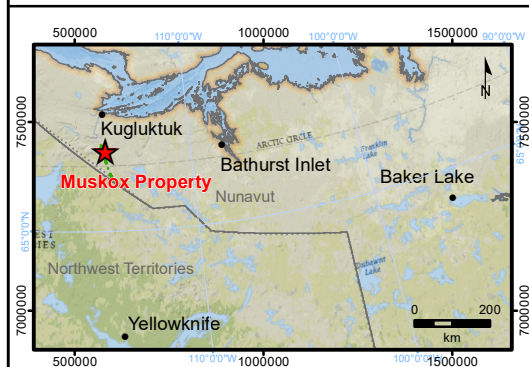


Legend

- Community
- ▲ Proposed Camp Location
- Muskox Mineral Claim
- Muskox Prospecting Permit

Inuit Owned Lands

- Surface Parcel
- Subsurface Parcel



SPC
NICKEL
CORP.

Muskox Property, Nunavut, Canada

Property Location

1:750,000

UTM N83 Zone 11

December 2022

0 20 km

APEX
Geoscience Ltd.

Appendix 2

GN-DoE Staff Directory

Last Name	First Name	Title	Phone number	Community	Department
Adjun	Larry	Park Operations and	867-982-7449	Kugluktuk	Environment
Aguilar	Estela	Environmental Education Specialist	867-975-7732	Iqaluit	Environment
Akavak	Tommy	Manager of KatannilikTerritorial Park	939-2416	Kimmirut	Environment
Akeeagok	Russell	Conservation Officer	867-982-3058	Kugluktuk	Environment
Akikulu	Mathew	Conservation Officer	439-9945	Arctic Bay	Environment
Aliqatuqtuq	Jason	Senior Manager (Operations) Wildlife Management	975-7781	Iqaluit	Environment
Aliqatuqtuq	Jaypootie	Wildlife Guardian (Casual)	927-8966	Qikiqtarjuaq	Environment
Anavilok	David	Conservation Officer II	867-561-6231	Taloyoak	Environment
Angohiatok	Monica	Conservation Officer II	867-983-4164	Cambridge Bay	Environment
Angoyuak	Sileema	Conservation Officer II	939-2004	Kimmirut	Environment
Arsenault	Robert	Conservation Officer II	867-793-2944	Baker Lake	Environment
Atatahak	Gerry	Kitikmeot Regional Coordinator, Parks Planning and Operations	867-982-7443	Kugluktuk	Environment
Attagutaluk	David	Laboratory Assistant		Igloolik	Environment
Awan	Malik	Wildlife Biologist - Carnivores	(867) 934 - 2179	Igloolik	Environment
Babstock	Leanne	Director, Policy, Planning and Legislation	867-975-7749	Iqaluit	Environment
Baikie	Denise	Environmental Assessment Specialist	867-934-2191	Igloolik	Environment
Baranowski	Benjamin	Conservation Officer	867-980-4164	Grise Fiord	Environment
Besenski	Jordan	Conservation Officer II	928-8507	Hall Beach	Environment
Blair	Eric	Policy Analyst	975-7721	Iqaluit	Environment
Blake	Jordan	Energy Policy Advisor	975-7734	Iqaluit	Environment
Brisco	Marc Alexandre	A/Environmental Compliance Manager	975-7726	Iqaluit	Environment
Campbell	Mitch	Biologist	867-857-3171	Arviat	Environment
Carter	Kayla	Summer Student	867-360-7605	Gjoa Haven	Environment
Chaikine	Alexandre	Environmental Assessment Specialist	934-2186	Igloolik	Environment
Chouinard	Alain	Environmental Protection Officer - Arviat	867-857-3174	Arviat	Environment
Chowdhury	Rashadul Islam	Manager Parks: Facility Planning and Operations	975-7725	Iqaluit	Environment
Clayden	Meredith	Program Manager, Water	975-7731	Iqaluit	Environment
Cooper	Elaina	Financial andTravel Analyst	975-7710	Iqaluit	Environment
COTest	FTS	Conservation Officer	975-6407	Cape Dorset	Environment
Coutu-Autut	Johanne	Conservation Officer III	867-645-8084	Rankin Inlet	Environment
Demavivas	Nenette	Senior Finance Officer	975-7713	Iqaluit	Environment
Desorcy	Patrick	Conservation Officer II	867-896-9189	Whale Cove	Environment
Dumond	Mathieu	Manager Wildlife - Kitikmeot	867-982-7441	Kugluktuk	Environment
Dunford	Andrew	Director, Climate Change Secretariat	867-975-7735	Iqaluit	Environment
Dyck	Markus	Polar Bear Biologist II	867-934-2181	Igloolik	Environment
Elliott	James	Project Manager, Land Use Planning	975-7722	Iqaluit	Environment
England	Kate	Manager - Research	867-934-2183	Igloolik	Environment
Fitzpatrick	Dion	Coordinator Park Operations	975-235	Iqaluit	Environment
Flaherty	Karen	Manager of Communications, Education and Outreach	867-975-7761	Iqaluit	Environment
Flaherty	William	Conservation Officer II	867-975-7783	Iqaluit	Environment
Fletcher	William	Conservation Officer II	867-980-4250	Kimmirut	Environment
Fredlund	Emilia	Regional Coordinator Parks, Heritage Appreciation Kitikmeot/ Kiv		Rankin Inlet	Environment
Fredlund	Matthew	Wildlife Technician II	867-934-2176	Igloolik	Environment
Garbarczyk	Jakub	Manager Parks Program Development	975-7724	Iqaluit	Environment
Ghazal	Maha	Advisor - Marine Mammals/ Acting Manager	867-473-2669	Pangnirtung	Environment

Gissing	Drikus	Wildlife Director	975-779	Iqaluit	Environment
Guay	Joseph	Conservation Officer II	867-857-2975	Arviat	Environment
Hainnu	Bruce Jerry	Conservation Officer Assistant	924-6235	Iqaluit	Environment
Haney	Daniel	Project Manager, Impact Assessment	867-975-7720	Iqaluit	Environment
Harmer	Rob	Regional Manager - Kivalliq	867-857-3172	Arviat	Environment
Hinanik	Randy	Environmental Protection Off	867-982-7483	Kugluktuk	Environment
Holzman	Sara	Acting Manager, Climate Change Adaptation	975-7733	Iqaluit	Environment
Hopkins	Will	Climate Change Communications Specialist	867-975-7762	Iqaluit	Environment
Huggins	Patrick	Junior Policy Analyst	867-975-7721	Iqaluit	Environment
Idlout	Kathy	Manager, Budgeting and Financial Programs	975-7714	Iqaluit	Environment
Ihakkaq	Jamie	Conservation Officer II	867-769-7011	Taloyoak	Environment
Immaroitok	Samuel	Wildlife Deterrent Clerk	N/A	Igloolik	Environment
Inuarak	Daniel	Environmental Protection Officer	867-899-8035	Pond Inlet	Environment
Ipeelie-Qiatsuk	Caroline	Regional Coordinator: Heritage Appreciation	867-975-7784	Iqaluit	Environment
Ipirq	Jennifer	Climate Change Outreach Specialist	867-975-7764	Iqaluit	Environment
Johnson	Scott	Regional Manager - North Baffin	899-7360	Pond Inlet	Environment
Kaludjak	Daniel	Conservation Officer II	867-645-8083	Rankin Inlet	Environment
Kattegatsiak	Peter	Conservation Officer II	867-898-9130	Chesterfield Inlet	Environment
Kendall	Manasie	Parks Geospatial and IT Specialist	975-7736	Iqaluit	Environment
Kennedy	Janelle	A/Director, Fisheries and Sealing	975-7706	Iqaluit	Environment
Kilabuk	Mark	Fisheries Research Assistant	867-473-2642	Pangnirtung	Environment
Kipanek	Julia	Human Resources Assistant	975-7774	Iqaluit	Environment
Koonoo	George	Wildlife Officer II	899-8819	Pond Inlet	Environment
Kownirk	Angela	Finance Clerk	867-975-7715	Iqaluit	Environment
Leclerc	Lisa-Marie	Regional Wildlife Biologist	867-982-7444	Kugluktuk	Environment
Lindell	Keenan	Kivalliq Regional Wildlife Technician	867-857-3175	Arviat	Environment
Long	Joshua	Manager of Communications, Education and Outreach	867-975-7761	Iqaluit	Environment
Lowe	Kristi	DirectorA/Deputy Chief Environmental Protection Officer	975-7748	Iqaluit	Environment
Lussier	Andreane	Climate Change Mitigation Manager	975-7775	Iqaluit	Environment
Mallory	Conor	High Arctic Biologist	867-934-2175	Igloolik	Environment
Manning	Annie	Administrative Officer	975-77	Iqaluit	Environment
Martos	Zoë	Manager of Communications and Knowledge Mobilization	975-7755	Iqaluit	Environment
Masuku	Mkhabela	Manager Parks: Planning and Establishment	975-7723	Iqaluit	Environment
Mercer	Daniel	Conservation Officer II	867-896-9189	Whale Cove	Environment
Methuen	Kevin	Kitikmeot Regional Wildlife Manager	867-982-7441	Kugluktuk	Environment
Metuituk	Darlene	Financen and Administration Officer	867-982-7452	Kugluktuk	Environment
Mikeeuneak	Florence	Wildlife Clerk	867-857-3170	Arviat	Environment
Milton	Terry	Wildlife Research Technician	867-982-7465	Kugluktuk	Environment
Mitsima	Mary	Finance Officer	867-975-7714	Iqaluit	Environment
Monteith	David	Director	975-7723	Iqaluit	Environment
Mullin	Tabitha	Conservation Officer II	252-3879	Resolute Bay	Environment
Mutch	Christopher	Wildlife Technician II	934-2188	Igloolik	Environment
Nahle	Ayman	Manager, Budgeting and Financial Programs	975-7730	Iqaluit	Environment
Natsiq	Tooma	Climate Change Mitigation Specialist	867-975-7704	Iqaluit	Environment
Naulalik	Lisa	Geospatial Information Assistant	975-7725	Iqaluit	Environment
Neely	Jon	Coordinator, Operations and Regulations	867-975-7782	Iqaluit	Environment
Netser	Troy	Conservation Officer II	867-925-8823	Chesterfield Inlet	Environment

Niakrok	Harry	Kivalliq Regional Parks	867-645-8013	Rankin Inlet	Environment
Niptanatiak	Allen	Conservation Officer III	867-982-7451	Kugluktuk	Environment
Niptanatiak	Catherine	Wildlife Clerk	867-982-7440	Kugluktuk	Environment
Noble	Geneva	Parks JPMCs Secretariat	975-7753	Iqaluit	Environment
Noble	Sean	Environmental Protection Officer	975-7769	Iqaluit	Environment
Noble Jr-	Jimmy	Deputy Minister, Environment	867-975-7705	Iqaluit	Environment
Nowdluk	Levi	Seal, Fur and Fisheries Program Delivery Specialist	867-975-7702	Iqaluit	Environment
Nungaq	Karen	Conservation Officer II	867-939-2004	Kimmirut	Environment
Nweze	Nikki	Director of Corporate Services	975-7708	Iqaluit	Environment
Owen	Jade	Social Science Advisor	975-7760	Iqaluit	Environment
Page	Samantha	Climate Change Adaptation Specialist	867-975-7755	Iqaluit	Environment
Pameolik	Chris	Wildlife Guardian	867-925-8823	Coral Harbour	Environment
Papatsie	Leesee	Manager Parks: Heritage Appreciation	975-7727	Iqaluit	Environment
Papatsie	Peterloosie	Conservation officer II	462-4002	Naujaat	Environment
Pearson	Rebecca	Kivalliq Special Projects Coordinator	867-645-8005	Rankin Inlet	Environment
Perrin	Lauren	Project Manager, Impact Assessment	975-7737	Iqaluit	Environment
Phelan	MJ	A/Manager Human Resources and Organizational Development	975-7717	Iqaluit	Environment
Pigalak	Gailene	Casual Front Desk Clerk	867-982-7440	Kugluktuk	Environment
Pinksen	Steve	Assistant Deputy Minister	975-7718	Iqaluit	Environment
Pirie	Bradley	Project Manager, Research and Monitoring	975-7757	Iqaluit	Environment
Pitseolak	Hellin	Finance and Administration	867-899-7546	Pond Inlet	Environment
Piugattuk	Francis	Wildlife Technician I	934-2178	Igloolik	Environment
Polanowski	Peter	Environmental Education Specialist	867-975-7732	Iqaluit	Environment
Pretty	Michelle	Manager Human Resources and Organizational	975-7716	Iqaluit	Environment
Pynn	Jonathan	Regional Manager-South Baffin	867-975-7793	Iqaluit	Environment
Qaunaq	Jeffrey	Assistant Wildlife Officer	980-4164	Grise Fiord	Environment
Qaunaq	Sally	Polar Bear Harvest Lab Assistant	867-934-2188	Igloolik	Environment
Qavvik	Daniel	Conservation Officer	266-8098	Sanikiluaq	Environment
Qiyuk	Paul	Wildlife Guardian	867-896-9189	Whale Cove	Environment
Ringrose	John	Baffin Biologist	867-899-7576	Pond Inlet	Environment
Robinson	Amy	A/Manager, Land Use and Env-Assessment	975-7765	Iqaluit	Environment
Savikataaq	Lillian	Finance Officer	867-857-3168	Arviat	Environment
Savikataaq Jr-	Joe	Conservation Officer III	867-857-2976	Arviat	Environment
Simonee	James	Wildlife Guardian	867-899-8819	Pond Inlet	Environment
Skillings	Jack	Consrvation Officer II	867-360-7605	Gjoa Haven	Environment
Smith	Caryn	Senior Wildlife Advisor Legislation and Management	867-975-7756	Iqaluit	Environment
Takoonagak	Lena	Executive Secretary	975-7705	Iqaluit	Environment
Taukie	Josie	Fur Program Coordinator	867-975-7711	Iqaluit	Environment
Tongak	Lily	Environment, Wildlife Reseach	867-934-2177	Igloolik	Environment
Toolooktook	Russell	Conservation Officer III	867-793-2944	Baker Lake	Environment
Vaillancourt	Linda	Director Parks and Special Places	975-7703	Iqaluit	Environment
Ware	Jasmine	Polar Bear Biologist I	867-934-2184	Igloolik	Environment
Williams	Alden	Wildlife Officer III	975-7788	Iqaluit	Environment
Wood	Tracy	Parks Management Planner	867-9757729	Iqaluit	Environment
Wyma	Fe	Marketing and Public Education Officer	975-7728	Iqaluit	Environment
Young	Angela	Senior Fisheries Science Advisor	975-7728	Iqaluit	Environment
Young	Jeffery	Conservation Officer II	867-934-8999	Igloolik	Environment
Zeng	Wei	Manager, Financial Services	975-7709	Iqaluit	Environment