

SPILL CONTINGENCY AND FUEL MANAGEMENT PLAN

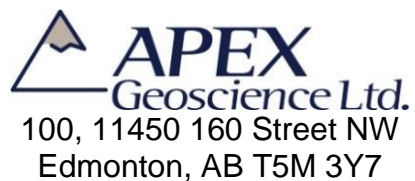
**MUSKOX NICKEL PROPERTY
NUNAVUT, CANADA**

Prepared for:



1351C, Kelly Lake Road, Unit 9
Sudbury, Ontario P3E 5P5

Prepared by:



Effective Date: January 1, 2023

Contents

1	Introduction	1
1.1	Contact Details	1
1.2	Distribution List and Additional Copies	1
1.3	Purpose and Scope	2
1.4	Other Plans	2
1.5	Applicable Legislation and Guidelines	2
1.5.1	Federal	2
1.5.2	Territorial.....	3
1.6	Project Description	3
2	Hazardous Materials On-Site	4
2.1	Fuel	5
2.2	Other Hazardous Materials.....	5
2.2.1	Chemicals	5
2.2.2	Motor, Hydrologic and Gear Oils.....	6
2.2.3	Drilling Additives	6
2.2.4	Antifreeze.....	6
2.2.5	Lead Acid Batteries.....	6
3	Risk Assessment	7
3.1	Potential Spill Hazards	7
3.2	Potential Environmental Impacts	7
4	Preventative Measures	8
4.1	Fuel	8
4.2	Propane.....	9
4.3	Chemicals.....	9
4.4	Battery Acid	9
4.5	Transportation of Fuel and Other Hazardous Materials to Site.....	9
5	Resource Inventory.....	10
5.1	Spill Kits.....	11
5.2	Other equipment on-site:	11
5.3	Fire Extinguishers.....	11
6	Training Program	12
6.1	Employees and other on-site personnel	12
6.2	Contractors.....	12
7	Response Organization	12
7.1	Basic Steps	13
7.2	Chain of Command	13
8	Containment Procedures	13
8.1	Containment of Hazardous Fluid Spills	13
8.1.1	Containment of Spills on Land	13
8.1.2	Containment of Spills on Water	14
8.1.3	Containment of Spills on Ice	15
8.1.4	Containment of Spills on Snow	15
8.1.5	Storage, Transfer and Disposal	16
8.2	Containment of Propane Spills	16

8.3 Containment of Chemical Spills.....	16
---	----

Tables

Table 3.1 Maximum Amount of Fuel to be Stored at the Camp Fuel Cache	5
--	---

Appendices

Appendix 1: Figures	AT END
Appendix 2: SDS/MSDS.....	AT END
Appendix 3: Immediately Reportable Spill Quantities.....	AT END
Appendix 4: NT-NU Spill Report Form	AT END

1 Introduction

The Muskox Nickel Property (the “Property” or “Project”) Spill Contingency and Fuel Management Plan (“SCFMP”) has been developed on behalf of SPC Nickel Corp. (“SPC” or the “Company”) in accordance with applicable legislation, guidelines and best practices. This SCFMP provides a description and methodology for preventing, mitigating, and minimizing the impacts of spills at the Muskox Nickel Property. This SCFMP demonstrates that the Company will ensure appropriate response capabilities and measures are in place to effectively address potential spills at the Project.

This SCFMP will come into effect January 1, 2023 pending approval from all relevant regulatory bodies. Copies and updates to this plan may be obtained via the Company or APEX Geoscience Ltd. (“APEX”). The SCFMP will be replaced, upon approval, if there are any significant changes to the activities outlined in the existing permits which warrant changes to the SCFMP. Minor changes will be submitted as an addendum to the SCFMP and submitted to the distribution list as required.

1.1 Contact Details

SPC Nickel Corp.

1351C, Kelly Lake Road, Unit 9

Sudbury, Ontario P3E 5P5

Tel: (705) 669-1777

www.spcnickel.com

APEX Geoscience Ltd.

100, 11450 160 Street NW

Edmonton, AB T5M 3Y7

Tel: (780) 467-3532

www.apexgeoscience.com

1.2 Distribution List and Additional Copies

The appropriate procedures in this SCFMP are to be followed for handling fuel, chemicals and other hazardous materials and for product spills and/or emergencies. The Project Field supervisor will determine what additional action is required in each instance.

All employees and contractors will be introduced to this SCFMP and made aware of where it is kept during their onsite orientation. Employees and contractors issued this SCFMP must become familiar with its contents relevant to their responsibilities.

This SCFMP will be distributed directly to:

Internal:

- SPC Nickel Corp. staff and contractors

External:

- Nunavut Planning Commission (“NPC”)
- Nunavut Impact Review Board (“NIRB”) and their public review distribution list
- Nunavut Water Board (“NWB”) and their public review distribution list
- Crown-Indigenous Relations and Northern Affairs Canada (“CIRNAC”)

On-Site Locations:

- At the Camp
- At the Drill(s)
- At the Fuel Cache(s)
- In any aircraft/vehicles
- Other locations as required

1.3 Purpose and Scope

The SCFMP provides straightforward procedures for the storage and handling of fuels and other hazardous materials for the purpose of reducing the risk of environmental contamination and to ensure the health and safety of all personnel from the accidental release of deleterious materials. If an accidental release should occur, the SCFMP provides clear response procedures. The goals of the Spill Prevention and Response Plan are to:

- Promote safe handling and use of potentially hazardous materials;
- Promote effective and safe recovery of spilled, potentially hazardous materials;
- Reduce environmental impacts of spills to water and land;
- Identify responsibilities and reporting procedures for spill events;
- Provide site specific information about the facilities and contingencies in place;
- Provide readily accessible emergency information to clean-up crews, management, and government agencies;
- Comply with federal and territorial government regulations and guidelines pertaining to the preparation of a Spill Prevention and Response Plan and notification requirements in the event of a spill.

1.4 Other Plans

The SCFMP should be considered as a part of the Property wide management system. Other management plans in place at the Muskox Nickel Property include:

- Abandonment and Restoration Plan (ARP)
- Emergency Response Plan (ERP)
- Environmental Management Plan (EMP)
- Waste Management Plan (WMP)

1.5 Applicable Legislation and Guidelines

Acts, regulations, and guidelines that apply to the storage, handling, transport, spill prevention and response of hazardous materials include, but are not limited to, the following:

1.5.1 Federal

- Canadian Environmental Protection Act
- Environment Canada's Environmental Emergency (E2) Regulations
- Implementation Guidelines for the Environmental Emergency Regulations
- Canadian Standards Association (CSA) Z1600-14 - Emergency and continuity management program
- National Oil Spill Preparedness and Response Regime

- National Energy Board requirements such as those in the Canada Oil and Gas Operations Act and Regulations and the Onshore Pipeline Regulations, 1999
- Environment Canada's Storage Tank Systems for Petroleum Products and Allied Petroleum Products Regulations
- Environment Canada's Guidelines for the Preparation of Hazardous Material Spill Contingency Plans, 1990
- Fisheries Act
- Migratory Birds Convention Act
- Nunavut Waters and Nunavut Surface Rights Tribunal Act
- Transportation of Dangerous Goods Act
- Transportation of Dangerous Goods Regulations
- National Fire Code of Canada
- Northern Land Use Guidelines
- Workplace Hazardous Materials Information System (WHMIS)
- CCME Environmental Codes of Practice for Aboveground and Underground Storage Tank Systems Containing Petroleum and Allied Petroleum Products
- Storage Tank Systems for Petroleum Products and Allied Petroleum Products Regulations
- Guidelines for Spill Contingency Planning (AANDC)

1.5.2 Territorial

- Northwest Territories and Nunavut Spill Contingency Planning and Reporting Regulations
- Contingency Planning and Spill Reporting In Nunavut – A guide to the New Regulations
- Guideline for Industrial Waste Discharges in Nunavut
- Fire Prevention Act
- Environmental Protection Act
- Mine Health and Safety Act and Regulations
- Public Health Act
- Safety Act
- Nunavut Occupational Health and Safety Regulations
- Environmental Guideline for the General Management of Hazardous Waste

1.6 Project Description

The Muskox Nickel Property (the “Property” or the “Project”), owned and operated by SPC Nickel Corp. (“SPC” or the “Company”), consists of 27 mineral claims covering 34,959 hectares and 2 prospecting permits covering 30,350 hectares. The Property is separated into a North Block, located on National Topographic System (“NTS”) map sheets: 86O03 and 86J14 and centred at 574,500mE, 7,427,000mN, North American Datum 1983 (“NAD83” Universal Transverse Mercator (“UTM”) Zone 11, and a South Block, located on NTS map sheets: 86J02, 86J06, 86J07, 86J10 and 86J11 (centred at 591,600mE, 7,373,000mN, NAD83 Zone 11). The North Block is located approximately 100 km south of the Hamlet of Kugluktuk and partially overlaps Inuit Owned Land (“IOL”) surface parcels CO-52 and CO-60. The south block, located entirely on Crown land, is

approximately 20 km south of the North Block and extends to the Nunavut - Northwest Territories border.

SPC proposes annual exploration programs which include general exploration activities such as geological mapping, prospecting, geochemical sampling (rock, soil and till), geophysical surveys (airborne and ground) and diamond drilling of approximately 5,000 m. Annual programs are anticipated to commence approximately April 1 and run until September 30.

The 2023 exploration program will include the establishment of a seasonal 20 person exploration camp with fuel cache to be constructed in one of 2 possible locations. The current potential locations are near Stanbridge Lake (66°52'51.088"N, 115°3'29.673"W) or near Marceau Lake (66°25'30.123"N, 114°59'1.726"W). Structures for the proposed camp will include 10 sleeper tents, 1 medical tent, 1 kitchen, 1 dry (with showers), 1 office tent, core shack, generator shack, incinerator and outhouses/pacto systems. The majority of the structures will be insulated Weatherhaven tents, or similar, with plywood floors.

General exploration activities on IOL surface parcels CO-52 and CO-60 are currently authorized by Kitikmeot Inuit Association ("KIA") Land Use Licence KTL122B004. SPC is currently applying for a Land Use Permit ("LUP") from Crown-Indigenous Relations and Northern Affairs Canada ("CIRNAC") and a Nunavut Water Board ("NWB") water licence to authorize the proposed seasonal camp and drilling. SPC is also applying to amend KIA Land Use Licence KTL122B004 to include diamond drilling on IOL.

The proposed work will be helicopter supported and require the occasional landing of the aircraft. In order to mitigate any potential impact on wildlife, the helicopter will always maintain a minimum altitude of 610 m (2,100 ft) above ground level except during landing, take-off or if there is a specific requirement for low level flying (e.g. airborne surveys). Wildlife will be avoided and the helicopter will not land in the presence of wildlife except in an emergency.

Absolutely no activities will be conducted that will interfere with caribou cows and calves, and no exploration activities will cause a diversion in the migration patterns of any caribou. SPC will communicate with the Kitikmeot Inuit Association ("KIA") and any other interested parties, regarding caribou sightings and appraised movements in the area.

Consultation with the Hamlet, Hunters and Trappers Organization and public of Kugluktuk is currently being planned to be completed prior to the next field program.

2 Hazardous Materials On-Site

The following section details the products which are anticipated to be the most commonly used hazardous materials at the Project (Table 3.1). The list is subject to change based on product replacements, etc. Any changes will be reflected in future revisions of this plan. All Safety Data Sheets/Material Safety Data Sheets ("SDS/MSDS") for these products are included within this plan and can be found in Appendix 2.

2.1 Fuel

A main fuel cache will be established proximal to the camp, primarily to store diesel and jet fuel, with smaller quantities of gasoline and propane. Chemicals and other hazardous materials will either be stored in the SPC camp fuel cache or in another site next to the fuel cache.

The SPC Nickel fuel cache will contain 300 drums (61,500 L) of diesel, gasoline, and aviation fuel and 20 cylinders (2,000 lb) of propane. Small amounts (2-3 drums each) of diesel and gasoline will be stored at the active drill sites as needed for drilling. Diesel, jet fuel, and gasoline will be stored in 205 litre (L) steel drums. Propane will be stored in 100 lb cylinders equipped with pressure relief valves. Waste oil will be sealed in 205 L steel drums and removed from the Project for proper disposal.

Other hazardous materials found on site may include small quantities of various lubricants/oil/grease for drilling and maintenance of motorized equipment, cleaning products, and waste oil. All hazardous materials will be clearly labelled in accordance with the Workplace Hazardous Materials Information System (“WHMIS”) and other applicable legislation. Labels will include, but not limited to, the type of fuel, safe handling procedures, reference to Material Safety Data Sheets, company name, and the date of delivery to site. Signs with the same information, along with SDS/MSDS for each fuel type will be posted at each hazardous material storage or transfer site.

The SPC Project Field Supervisor is responsible for maintaining a detailed fuel and hazardous material inventory and is responsible for overseeing the maintenance and monitoring of all fuel and hazardous material caches

Table 3.1 Maximum Amount of Fuel to be Stored at the Camp Fuel Cache

Material	Container	Maximum in cache
Diesel	205 L Drum	145 Drums
Jet Fuel (Jet A or Jet B)	205 L Drum	145 Drums
Gasoline	205 L Drum	10 Drum
Propane	100 lb Cylinder	20 Cylinders

2.2 Other Hazardous Materials

Other hazardous materials which may be present at the Muskox Nickel Project include chemicals for cleaning, motor oil, drilling additives, antifreeze and batteries. All hazardous materials will be stored in their original containers within the designated area in the hazardous materials cache.

2.2.1 Chemicals

Chemicals to be used on site may include household-strength cleaning supplies such as Javex, ammonia-based sprays, wash soaps, hand sanitizer, degreasers, etc. In addition, limited miscellaneous items such as insect repellent and aerosols will be available. All items will be stored in their original containers in their respective storage/use areas and

removed off-site with routine garbage backhauls, such as at crew change. All containers storing hazardous materials will be inspected for dents, punctures, etc. prior to being transported to the drill site. Extreme care will be taken in the process of transferring all chemicals/chemical solutions/fuels/etc. Funnels will be utilized to direct small amounts of liquid to reduce the potential of spillage. Spill mats will be in place when transferring/refuelling.

2.2.2 Motor, Hydrologic and Gear Oils

An average of approximately 40 L of motor, hydraulic and gear oils will be maintained at the drill site. The products will be supplied in 1 L or 20 L plastic containers. This inventory will be maintained during operations and resupplied as needed. These products will be used as crankcase oils in the diesel engines that power the electrical generator, diesel engines on the drill rigs, and gasoline engines in small equipment such as portable electrical generators. The containers will be stored next to the drill, outdoors on pallets, wrapped in polyethylene sheeting and tarped over or on spill containment pallets.

2.2.3 Drilling Additives

The diamond drilling may require the use of additives depending on rock conditions. All drill additives will be non-toxic and biodegradable, whenever possible. When drilling is underway, the required drilling muds, additives, oils and lubricants will be stored in their original containers within a designated area, once the single hole is completed these materials will be removed to be properly disposed of. The drill additives will be transferred according to the manufacturer's guidelines and the operating procedures of the drill contractor.

2.2.4 Antifreeze

As much as possible, drilling will utilize hot water, but if required CaCl_2 will be used as an antifreeze. To ensure drill fluids cannot directly flow into a water body, all drill waste will be captured in properly constructed excavated sump or an appropriate natural depression located at a distance of at least 31 m from the ordinary high water mark of any adjacent water body. All hazardous materials, including CaCl_2 , will be stored in secondary containment. Storage, use and transport will follow the recommendations of the SDS/MSDS.

2.2.5 Lead Acid Batteries

Lead acid batteries will be present on the drill rigs and on the diesel engines for the electrical generators. In addition, a small number of batteries may be needed for other portable items. Spares will be maintained on site. For the purpose of this project description, we have assumed that two spare lead acid batteries will be kept at the camp. Secondary containment measures are not contemplated given the small number of batteries in storage. At no time will any batteries be put in the garbage.

3 Risk Assessment

SPC Nickel Corp. recognizes that there are a number of risks associated with the use, storage and transfer of hazardous materials. The following summarizes a number of potential risks that may be present at the Muskox Nickel Project.

3.1 Potential Spill Hazards

- Containers, such as 205 L steel drums, have the potential to leak or rupture due to mishandling,
- Older or refilled drums are more prone to leaking around the bungs if the seals are not properly maintained,
- Water and spills may collect in the secondary containment and overflow.
- Motorized equipment may experience fuel or oil leaks as a result of malfunctions, impacts, lack of maintenance, improper storage, or faulty operation.
- Leaks or spills may occur during fuel transfer due to over-fueling, improper fueling procedure, or faulty equipment.

3.2 Potential Environmental Impacts

All hazardous materials pose a threat to the environment if spilled. Overall, spills in the winter are usually lower impact as snow is a natural sorbent and ice forms a barrier against soil or water contamination. The following list outlines potential environmental impacts of hazardous materials stored on site:

- Gasoline may be harmful to wildlife and aquatic life. It is not readily biodegradable and has the potential for bioaccumulation in the environment. Gasoline volatilizes quickly.
- Diesel may be harmful to wildlife and aquatic life. It is not readily biodegradable and has the potential for bioaccumulation in the environment. Diesel burns slowly and thus the risk to the environment is reduced during recovery as it can be more readily contained compared to more volatile fuels.
- Jet fuel may be harmful to wildlife and aquatic life. It is not readily biodegradable and has the potential for bioaccumulation in the environment. Jet fuel volatilizes relatively quickly.
- Propane may be harmful to wildlife and the surrounding environment, and it has the potential to accumulate in the environment. Propane is extremely volatile and is the most flammable material stored on site. Impacts to the immediate surrounding environment are of greatest concern.
- Oils and greases may be harmful to wildlife and aquatic life. They are not readily biodegradable and have the potential for bioaccumulation in the environment.
- Drilling additives may be harmful to wildlife and aquatic life.

4 Preventative Measures

All fuels and other hazardous materials, as well as transfer areas, will be stored within “Arctic Insta-Berms”, or similar products, for secondary containment. These types of berms utilize chemical and fire-resistant fabric (generally polyurethane coated nylon or vinyl coated polyester material) designed for extreme arctic temperatures and puncture resistance. “RainDrain” or similar hydrocarbon filtration systems will be used to safely remove any water collected inside the berms, and as a safeguard against any potential overflows of contaminated water. The storage area will be located a minimum distance of 31 m from the normal high water mark of any water body. Spill kits and firefighting equipment will be strategically located near where any hazardous materials are stored, used or transferred.

All hazardous materials will be clearly labelled in accordance with the Workplace Hazardous Materials Information System (WHMIS) and other applicable legislation. Labels will include, but not limited to, the type of material, safe handling procedures, reference to SDS/MSDS, company name, and the date of delivery to site. Signs with the same information, along with SDS/MSDS for each material type will be posted at each storage or transfer site. Additionally, “No Smoking” signs will be posted at all locations where hazardous materials are stored or transferred.

All fuel drums/tanks will be inspected before being transported to site or refilled in an accredited facility. Monitoring of storage containers, fuel transfer equipment, and fuel caches will be ongoing during the drill program. Inspections will be conducted on a regular and timely basis to identify any damaged or leaking containers, and the findings recorded. Any damage discovered during or as a result of transport will also be recorded. Any leaks or spills will be reported and contained as outlined in this document.

The Project Field Supervisor is responsible for supervising the monitoring and inspection program and keeping a detailed inventory of all fuel and other hazardous materials on site.

4.1 Fuel

Fuel drums will be stored on their sides in organized rows with the bungs in the three o'clock and nine o'clock positions. They will be stored in such a manner that they will not be susceptible to tipping over, rolling or otherwise being unstable. Drums will be stood upright 1 to 2 days prior to use to allow any contaminants to settle. Regular visual inspections will be conducted to identify any damaged or leaking containers. In the event that a leak is discovered, the substance will either be used immediately or transferred to an undamaged container. Regular inspections and maintenance of motorized equipment will also be performed to avoid any fluid leaks onto the land.

Electric or hand wobble pumps equipped with filtration devices will be used for the transfer of diesel, jet fuel, and gasoline from their storage containers directly to their end-use fuel tanks. Portable drip trays or mini berms will be used to mitigate the risk of any spillage. Proper grounding procedures will always be used during fuel transfer while using an electric pump. Cigarette smoking, sparks, open flames, and any potential ignition sources are prohibited within 100 m of any fuel storage site and at all times during fuel transfer.

Any personnel who are required to handle or store fuel will receive appropriate training, including instruction in the operation and maintenance of fuel transfer and storage equipment. All on-site personnel will receive training as outlined in this document.

4.2 Propane

Propane will be stored in appropriate, certified containers. Propane cylinders will be inspected and monitored on a regular basis for any signs of deterioration or corrosion. Containers will be secured and fastened in an upright position to ensure there is no risk of damage to the regulator in the event of a fall.

Propane cylinders will be equipped with a pressure release valve that opens to prevent a buildup of excessive internal pressure. Labels, showing data such as date of manufacture and re-testing dates, will be applied to the collar of the cylinders. Propane is non-toxic and will not contaminate soil; therefore, secondary containment berms are not required for storage. All propane cylinders will be secured for safety and stored away from any sources of ignition.

4.3 Chemicals

Containers and packages of chemicals will be placed in the hazardous materials cache within secondary containment and may also be on pallets, wrapped in polyethylene sheeting and tarped over. Immediately prior to use, bags or containers of chemicals will be transported to the drill site. Appropriate spill kits, including empty containers/drums for contaminated soil, will be kept on hand to clean up any product spilled.

Chemicals will generally be transferred directly to the end use machinery from the containers that the products were provided in. Considering the nature of the operations, generally less than 20 L of product will be transferred at a time. For any solid products, the bags will be opened directly over the intended use tanks into which the product will be placed. Used chemical products will be returned to empty containers and stored for shipment off-site. Used motor oil will be accumulated in sealed, labelled 20 L pails for shipment off-site.

4.4 Battery Acid

All batteries will be protected from damage by fastening them into the space designed for them when used with various power equipment and stored safely within appropriate secondary containment when not in use.

4.5 Transportation of Fuel and Other Hazardous Materials to Site

The drill company will have their own spill response procedures and the Project Field Supervisor will review all policies and procedures to ensure they align. Fuel and other hazardous materials will be brought to site by helicopter or fixed wing aircraft, and then slung by helicopter from camp, as required.

Prior to transport to site all fuel drums, tanks or other containers will be inspected to identify any defects (i.e. torn, missing, or twisted gaskets, punctures, etc.). A second inspection will be performed upon arrival at the camp, fuel cache or drill site. Regulations outlined in the Transportation of Dangerous Goods Act, and other relevant legislation, will

be observed at all times during transport. Empty drums will be removed from site for proper disposal or refilled in an accredited facility.

5 Resource Inventory

Spill kits and firefighting equipment will be strategically located near where any hazardous materials are stored, used or transferred, such as at camp, drill sites and any other locations as required.

5.1 Spill Kits

Spill kits will be in bright yellow 231 L rigid plastic containers and will contain:

- 100 oil sorbent pads
- 6 small pillows
- 2 large pillows
- 2 3"x4' socks
- 5 3"x8' socks
- 2 4' socks
- 1 25 lb. bag granular sorbent
- 2 pair splash goggles
- 2 poly coated Tyvek suits
- 2 disposable respirators
- 10 large bags with ties for temporary use
- 2 large tarps
- 1 collapsible shovel
- 1 roll duct tape
- 1 utility knife
- 2 spill kit labels
- 1 laminated copy of the Muskox Nickel SCFMP
- 1 231 L overpack drum
- 1 checklist of required items

Spill kits will include enough Flexible Intermediate Bulk Containers ("FIBC")-type bags (suitable for transporting contaminated materials by helicopter) to be able to address the largest possible spill volume (i.e., combined spill of multiple barrels) being stored or transported at that time.

5.2 Other equipment on-site:

- 2 38"x144' rolls absorbent matting
- 200 16"x20" enviro matting
- 10 booms
- 4 large tarps
- 4 shovels (minimum)
- 2 pickaxes (minimum)
- 2 rakes (minimum)
- 2 empty 205 L drums (minimum)

5.3 Fire Extinguishers

Appropriate fire extinguishers and other firefighting equipment will be strategically located near where any hazardous materials are used, stored or transferred, including at drill site and in vehicles.

6 Training Program

6.1 Employees and other on-site personnel

All on-site personnel will undergo an orientation and training program on initial spill response procedures and be familiar with spill reporting requirements. Fuel handling personnel will receive additional training in safe operation of fuel transfer equipment, spill prevention techniques and spill response. The SPC Project Field Supervisor will keep detailed training records.

Training will include, but not be limited, to the following:

- Review of the SPC Nickel Corp. FMP, SPRP and ERP
- Location of fuel and chemical storage sites.
- Causes and possible effects of spills.
- Use of on and off-site spill response resources and contact lists.
- Exercises in spill response and spill kit use.

All on-site personnel are required to have basic training in first aid, and some may also require WHMIS, and Transportation of Dangerous Goods (“TDG”). Supervisors are required to have advanced first aid training, as well as a valid Occupational Health and Safety (“OHS”) Supervisor’s Certificate.

If required, a designated Emergency Response Team (“ERT”) made up of on-site personnel may be established. Members of the ERT will receive comprehensive and ongoing training in emergency spill response. ERT members will be on-site at all times and will be made aware of the available resources and locations of spill kits.

6.2 Contractors

All contractors will complete site-specific health and safety training including, but not limited to WHMIS, TDG, and OSH training.

7 Response Organization

In the case of a spill or environmental emergency, an immediate, safe and environmentally responsible reaction is required. An immediately reportable spill is defined as a release of a substance that is likely to be an imminent environmental or human health hazard or meets or exceeds the threshold volumes outlined in Appendix 3 “*Immediately Reportable Spill Quantities*.” It must be reported to the Nunavut 24-Hour Spill Report Line at 1-867-920-8130.

Any spills less than the quantities defined in Appendix 3 do not need to be reported immediately to the spill reporting line, however all spills at the Muskox Nickel Project will be reported, regardless of quantity.

7.1 Basic Steps

The basic steps of the Muskox Nickel Project Spill Response Plan are as follows:

1. **Assess** safety hazards and risks.
2. **Ensure** the safety of all persons at all times.
3. **Identify** the spilled substance and its source.
4. **Eliminate** ignition source(s), if safe to do so.
5. **Stop** the flow of the spill (shut off valve, stand up drum, etc.), if safe to do so.
6. **Contain** the spill or environmental hazard, if safe to do so.
7. **Inform** the Project Field Supervisor.
8. **Request** assistance (if required).
9. **Implement** any necessary cleanup/remedial action.
10. **Photograph** if and where possible, during and after cleanup.

7.2 Chain of Command

1. **SPC Project Field Supervisor(s)**.
2. **NT/NU 24-Hour Spill Report Line** at 867-920-8130 (Fax: 867-873-6924).
 - a. Before or after contacting the 24-Hour Spill Report Line, a Spill Report Form (Appendix 4) is to be filled out.
3. **Any other agencies** as instructed by the NT/NU 24-Hour Spill Report Line and the INAC in Nunavut at 1-800-567-9604, the Manager of Field Operations at 867-975-4295, and Environment Canada at 867-920-8130.
4. **KIA** at (867) 645 5725, if on IOL.

8 Containment Procedures

The following list outlines the containment procedures for hazardous materials spilled on site:

- Ensure it is safe to initiate containment procedures.
- Always use applicable personal protective equipment (“PPE,” i.e. gloves, goggles/safety glasses, masks/respirators, etc.) and other safety equipment before attempting to contain a spill.
- Initiate spill containment by first determining what will be affected by the spill.
- Assess speed and direction of the spill and the cause of movement (water, wind, slope).
- Determine the best location for containing the spill, avoiding water bodies.
- Have a contingency plan ready in case spill worsens beyond control or if other factors impede containment efforts.

8.1 Containment of Hazardous Fluid Spills

8.1.1 Containment of Spills on Land

Spills on land include spills on rock, gravel, soil and/or vegetation. It is important to note that soil is a natural sorbent, thus spills on soil are generally less serious than spills on water as contaminated soil can be more easily recovered. Generally, spills on land occur during the late spring, summer or fall when snow cover is at a minimum. It is important that all measures be undertaken to avoid spills reaching open water bodies.

Dykes

Dykes can be created using soil surrounding a spill on land. These dykes are constructed around the perimeter or down slope of the spilled fuel. A dyke needs to be built up to a size that will ensure containment of the maximum quantity of fuel that may reach it. A plastic tarp can be placed on and at the base of the dyke such that fuel can pool up and subsequently be removed with sorbent materials or by pump into barrels or bags. If the spill is migrating very slowly a dyke may not be necessary and sorbents can be used to soak up fuels before they migrate away from the source of the spill.

Trenches

Trenches can be dug out to contain spills as long as the top layer of soil is thawed. Shovels pickaxes or a loader can be used depending on the size of trench required. It is recommended that the trench be dug to the bedrock or permafrost, which will then provide containment layer for the spilled fuel. Fuel can then be recovered using a pump or sorbent materials.

8.1.2 Containment of Spills on Water

Spills on water such as rivers, streams or lakes are the most serious types of spills as they can negatively impact water quality and aquatic life. All measures need to be undertaken to contain spills on open water.

Booms

Booms are commonly used to recover fuel floating on the surface of lakes or slow moving streams. They are released from the shore of a water body to create a circle around the spill. If the spill is away from the shoreline a boat will need to be used to reach the spill, then the boom can be set out. More than one boom may be used at once. Booms may also be used in streams and should be set out at an angle to the current. Booms are designed to float and have sorbent materials built into them to absorb fuels at the edge of the boom. Fuel contained within the circle of the boom will need to be recovered using sorbent materials or pumps and placed into barrels or bags for disposal.

Weirs

Weirs can be used to contain spills in streams and to prevent further migration downstream. Plywood or other materials found on site can be placed into and across the width of the stream, such that water may still flow under the weir. Spilled fuel will float on the water surface and be contained at the foot of the weir. It can then be removed using sorbents, booms or pumps and placed into barrels or plastic bags.

Barriers

In some situations, barriers made of netting or fence material can be installed across a stream, and sorbent materials placed at the base to absorb spilled fuel. Sorbents will need to be replaced as soon as they are saturated. Water will be allowed to flow through. This is very similar to the weir option discussed above.

Burning

In some cases, it may be appropriate to burn fuel or to let volatile fuels such as gasoline evaporate after containment on the water surface. This should only be undertaken in consultation with, and after approval from the CIRNAC or KIA (if on IOL) Inspector.

8.1.3 Containment of Spills on Ice

Spills on ice are generally the easiest spills to contain due to the predominantly impermeable nature of the ice. For small spills, sorbent materials are used to soak up spilled fuel. The remaining contaminated ice/ slush can be scraped and shovelled into a plastic bag or barrel. However, all possible attempts should be made to prevent spills from entering ice covered waters as no easy method exists for containment and recovery of spills if they seep under ice.

Dykes

Dykes can be used to contain fuel spills on ice. By collecting surrounding snow, compacting it and mounding it to form a dyke down slope of the spill, a barrier is created thus helping to contain the spill. If the quantity of spill is fairly large, a plastic tarp can be placed over the dyke such that the spill pools at the base of the dyke. The collected fuel can then be pumped into barrels or collected with sorbent materials.

Trenches

For significant spills on ice, trenches can be cut into the ice surrounding and/or down slope of the spill such that fuel is allowed to pool in the trench. It can then be removed via pump into barrels, collected with sorbent materials, or mixed with snow and shovelled into barrels or bags.

Burning

Burning should only be considered if other approaches are not feasible and is only to be undertaken with the permission of the CIRNAC or KIA (if on IOL) Inspector.

8.1.4 Containment of Spills on Snow

Snow is a natural sorbent, thus as with spills on soil, spilled fuel can be more easily recovered. Generally, small spills on snow can be easily cleaned up by raking and shovelling the contaminated snow into plastic bags or empty barrels and storing these at an approved location.

Dykes

Dykes can be used to contain fuel spills on snow. By compacting snow down slope from the spill, and mounding it to form a dyke, a barrier or berm is created thus helping to contain the spill. If the quantity of spill is fairly large, a plastic tarp can be placed over the dyke such that the spill pools at the base of the dyke. The collected fuel/snow mixture can then be shovelled into barrels or bags or collected with sorbent materials.

8.1.5 Storage, Transfer and Disposal

In most cases, spill cleanups are initiated at the far end of the spill and contained moving toward the centre of the spill. Sorbent socks and pads are generally used for small spill clean-up. A pump with an attached fuel transfer hose can suction spills from leaking containers or large accumulations on land or ice and direct these larger quantities into empty drums. Hand tools such as cans, shovels, and rakes are also very effective for small spills or hard to reach areas. Heavy equipment can be used if deemed necessary and given space and time constraints.

Used sorbent materials are to be immediately placed in plastic bags, and later in sealed containers for future disposal. All materials mentioned in this section are available in the spill kits located at camp, drill sites and fuel caches. Following clean up, any tools or equipment used will be properly washed and decontaminated or replaced if this is not possible.

All contaminated soil, water, ice, snow, and supplies used for clean-up will be stored in sealed, labelled containers and removed from site for proper disposal at an approved facility.

8.2 Containment of Propane Spills

It is not possible to contain vapours when released. Water spray can be used to knock down vapours if no chance of ignition exists. Personnel should leave the area immediately unless a small leak is stopped immediately following detection. Personnel should avoid touching release points on damaged containers as frost may form rapidly. If tanks are damaged, do not attempt a recovery, allow gas to disperse. Keep clear of tank ends. Small fires can be extinguished with a dry chemical CO₂ fire extinguisher.

Contaminated materials and damaged containers will be sent to an approved facility for disposal.

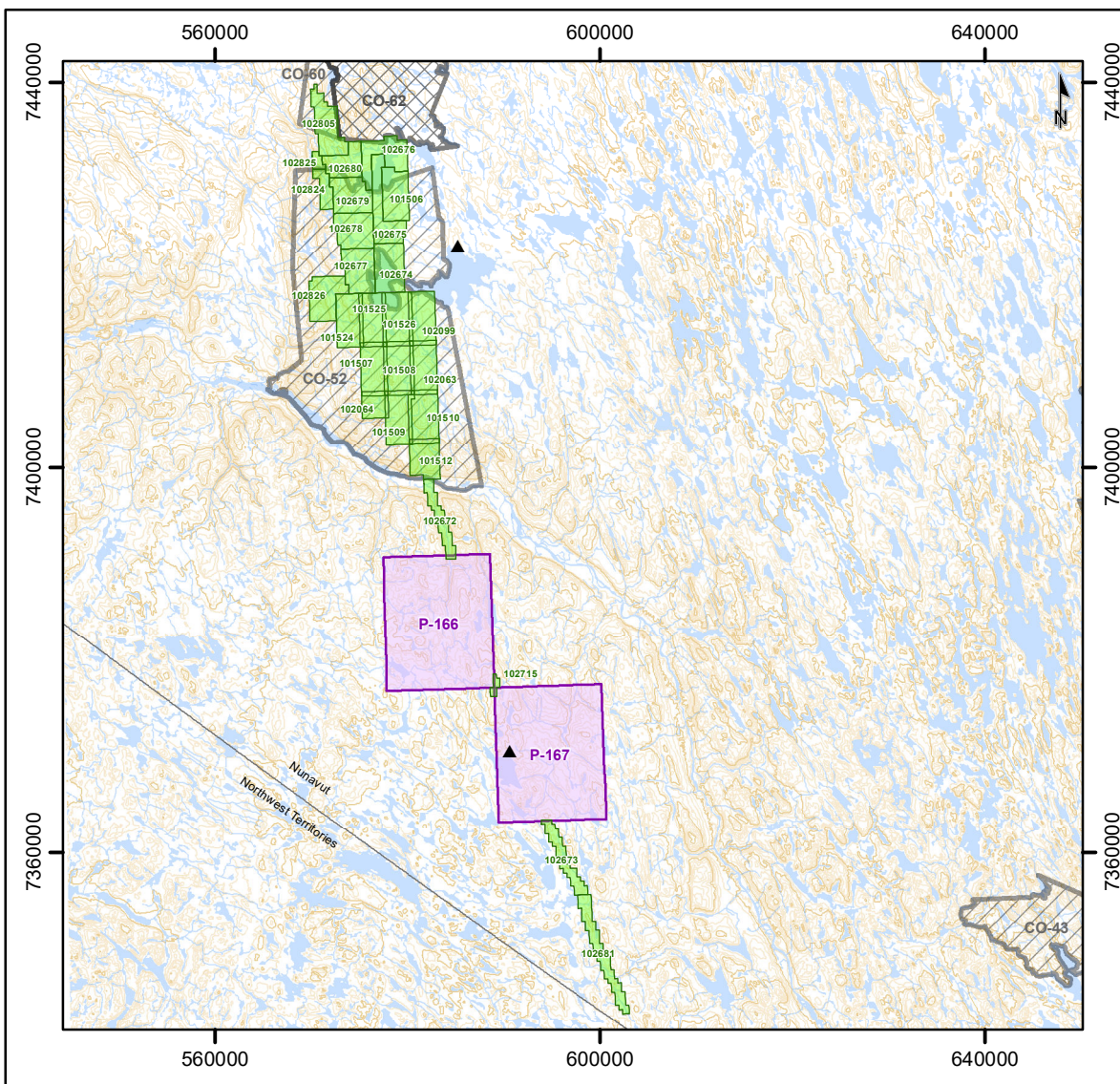
8.3 Containment of Chemical Spills

- Identify the spilled material, if possible.
- REFER TO SDS/MSDS.
- Assess hazard of spilled material.
- Members of the emergency response team who are vulnerable to certain contaminants should be replaced with alternatives (e.g. Asthmatics where fumes or airborne particles are evident).
- Assemble applicable PPE (i.e. gloves, goggles/safety glasses, masks/respirators, etc.) and other safety equipment before responding to a spill.
- Apply absorbents to soak up liquids.
- Solid chemicals such as dusts or powders should be covered with plastic sheeting to prevent disbursement by wind or animal.
- Neutralize acids or caustics. Place spilled material and contaminated clean-up supplies in empty refuge drums and seal for disposal.
- Contact the NT/NU 24-Hour Spill Report Line.
- Proceed with clean-up in correspondence with the SDS/MSDS.

The Project Field Supervisor is responsible for maintaining a detailed inventory of all fuel and other hazardous materials, including waste. The Project Field Supervisor will track all movement and transfer of hazardous materials, including wastes, with appropriately detailed logs. A Hazardous Waste Manifest will be completed and will accompany all shipments of hazardous waste. Copies of the Hazardous Waste Manifests will also be kept with Project Field Supervisor.

Appendix 1

Figures

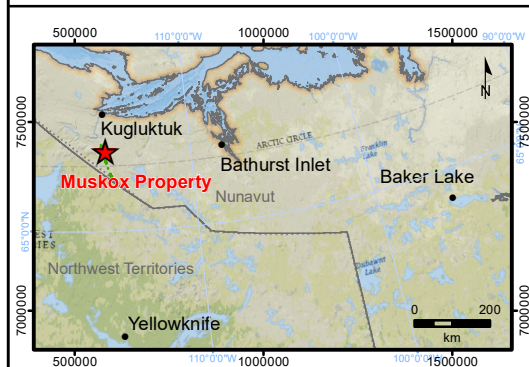


Legend

- Community
- ▲ Proposed Camp Location
- Muskox Mineral Claim
- Muskox Prospecting Permit

Inuit Owned Lands

- Surface Parcel
- Subsurface Parcel



SPC
NICKEL
CORP.

Muskox Property, Nunavut, Canada

Property Location

1:750,000

UTM N83 Zone 11

December 2022

0 20 km

APEX
Geoscience Ltd.

Appendix 2

SDS/MSDS



AMC CALCIUM CHLORIDE

AMC

Chemwatch: 20922

Version No: 6.1.1.1

Safety Data Sheet according to WHS and ADG requirements

Chemwatch Hazard Alert Code: 2

Issue Date: 02/04/2016

Print Date: 12/08/2017

L.GHS.AUS.EN

SECTION 1 IDENTIFICATION OF THE SUBSTANCE / MIXTURE AND OF THE COMPANY / UNDERTAKING

Product Identifier

Product name	AMC CALCIUM CHLORIDE
Chemical Name	calcium chloride
Chemical formula	Ca-Cl ₂
Other means of identification	Not Available
CAS number	10043-52-4

Relevant identified uses of the substance or mixture and uses advised against

Relevant identified uses	Used as a drying, dehydrating, desiccating agent for organic liquids, gases. Obsolescent use as refrigerant brine.
--------------------------	--

Details of the supplier of the safety data sheet

Registered company name	AMC
Address	216 Balcatta Rd Balcatta WA 6021 Australia
Telephone	+61 8 9445 4000
Fax	+61 8 9445 4040
Website	www.amcmud.com
Email	amc@imdexlimited.com

Emergency telephone number

Association / Organisation	Not Available
Emergency telephone numbers	1800 039 008 or +61 3 9573 3112,+800 2436 2255 +613 9573 3112
Other emergency telephone numbers	Not Available

SECTION 2 HAZARDS IDENTIFICATION

Classification of the substance or mixture

HAZARDOUS CHEMICAL. NON-DANGEROUS GOODS. According to the WHS Regulations and the ADG Code.

CHEMWATCH HAZARD RATINGS

	Min	Max
Flammability	0	
Toxicity	2	
Body Contact	2	
Reactivity	0	
Chronic	0	

0 = Minimum
1 = Low
2 = Moderate
3 = High
4 = Extreme

Poisons Schedule	Not Applicable
Classification ^[1]	Acute Toxicity (Oral) Category 4, Eye Irritation Category 2A

AMC CALCIUM CHLORIDE

Legend: 1. Classified by Chemwatch; 2. Classification drawn from HSIS ; 3. Classification drawn from EC Directive 1272/2008 - Annex VI

Label elements

Hazard pictogram(s)	
SIGNAL WORD	WARNING

Hazard statement(s)

H302	Harmful if swallowed.
H319	Causes serious eye irritation.
AUH066	Repeated exposure may cause skin dryness and cracking.

Precautionary statement(s) Prevention

P270	Do not eat, drink or smoke when using this product.
P280	Wear protective gloves/protective clothing/eye protection/face protection.

Precautionary statement(s) Response

P305+P351+P338	IF IN EYES: Rinse cautiously with water for several minutes. Remove contact lenses, if present and easy to do. Continue rinsing.
P337+P313	If eye irritation persists: Get medical advice/attention.

Precautionary statement(s) Storage

Not Applicable

Precautionary statement(s) Disposal

P501	Dispose of contents/container in accordance with local regulations.
------	---

SECTION 3 COMPOSITION / INFORMATION ON INGREDIENTS

Substances

CAS No	%[weight]	Name
10043-52-4	>85	<u>calcium chloride</u>
		commercial materials may contain up to
		3% sodium chloride

Mixtures

See section above for composition of Substances

SECTION 4 FIRST AID MEASURES

Description of first aid measures

Eye Contact	<p>If this product comes in contact with the eyes:</p> <ul style="list-style-type: none">Wash out immediately with fresh running water.Ensure complete irrigation of the eye by keeping eyelids apart and away from eye and moving the eyelids by occasionally lifting the upper and lower lids.Seek medical attention without delay; if pain persists or recurs seek medical attention.Removal of contact lenses after an eye injury should only be undertaken by skilled personnel.
Skin Contact	<p>If skin or hair contact occurs:</p> <ul style="list-style-type: none">Flush skin and hair with running water (and soap if available).Seek medical attention in event of irritation.
Inhalation	<ul style="list-style-type: none">If fumes, aerosols or combustion products are inhaled remove from contaminated area.Other measures are usually unnecessary.
Ingestion	<ul style="list-style-type: none">IF SWALLOWED, REFER FOR MEDICAL ATTENTION, WHERE POSSIBLE, WITHOUT DELAY.For advice, contact a Poisons Information Centre or a doctor.Urgent hospital treatment is likely to be needed.

AMC CALCIUM CHLORIDE

- ▶ In the mean time, qualified first-aid personnel should treat the patient following observation and employing supportive measures as indicated by the patient's condition.
- ▶ If the services of a medical officer or medical doctor are readily available, the patient should be placed in his/her care and a copy of the SDS should be provided. Further action will be the responsibility of the medical specialist.
- ▶ If medical attention is not available on the worksite or surroundings send the patient to a hospital together with a copy of the SDS.

Where medical attention is not immediately available or where the patient is more than 15 minutes from a hospital or unless instructed otherwise:

- ▶ **INDUCE** vomiting with fingers down the back of the throat, **ONLY IF CONSCIOUS**. Lean patient forward or place on left side (head-down position, if possible) to maintain open airway and prevent aspiration.

NOTE: Wear a protective glove when inducing vomiting by mechanical means.

Indication of any immediate medical attention and special treatment needed

As in all cases of suspected poisoning, follow the ABCDEs of emergency medicine (airway, breathing, circulation, disability, exposure), then the ABCDEs of toxicology (antidotes, basics, change absorption, change distribution, change elimination).

For poisons (where specific treatment regime is absent):

BASIC TREATMENT

- ▶ Establish a patent airway with suction where necessary.
- ▶ Watch for signs of respiratory insufficiency and assist ventilation as necessary.
- ▶ Administer oxygen by non-rebreather mask at 10 to 15 L/min.
- ▶ Monitor and treat, where necessary, for pulmonary oedema.
- ▶ Monitor and treat, where necessary, for shock.
- ▶ Anticipate seizures.
- ▶ **DO NOT** use emetics. Where ingestion is suspected rinse mouth and give up to 200 ml water (5 ml/kg recommended) for dilution where patient is able to swallow, has a strong gag reflex and does not drool.

ADVANCED TREATMENT

- ▶ Consider orotracheal or nasotracheal intubation for airway control in unconscious patient or where respiratory arrest has occurred.
- ▶ Positive-pressure ventilation using a bag-valve mask might be of use.
- ▶ Monitor and treat, where necessary, for arrhythmias.
- ▶ Start an IV D5W TKO. If signs of hypovolaemia are present use lactated Ringers solution. Fluid overload might create complications.
- ▶ Drug therapy should be considered for pulmonary oedema.
- ▶ Hypotension with signs of hypovolaemia requires the cautious administration of fluids. Fluid overload might create complications.
- ▶ Treat seizures with diazepam.
- ▶ Proparacaine hydrochloride should be used to assist eye irrigation.

BRONSTEIN, A.C. and CURRANCE, P.L.

EMERGENCY CARE FOR HAZARDOUS MATERIALS EXPOSURE: 2nd Ed. 1994

Treat symptomatically.

SECTION 5 FIREFIGHTING MEASURES

Extinguishing media

- ▶ There is no restriction on the type of extinguisher which may be used.
- ▶ Use extinguishing media suitable for surrounding area.

Special hazards arising from the substrate or mixture

Fire Incompatibility	None known.
-----------------------------	-------------

Advice for firefighters

Fire Fighting	<ul style="list-style-type: none"> ▶ Alert Fire Brigade and tell them location and nature of hazard. ▶ Wear breathing apparatus plus protective gloves in the event of a fire.
Fire/Explosion Hazard	<ul style="list-style-type: none"> ▶ Non combustible. ▶ Not considered a significant fire risk, however containers may burn. <p>Decomposition may produce toxic fumes of:</p> <p>, hydrogen chloride</p> <p>, metal oxides</p> <p>May emit poisonous fumes.</p> <p>May emit corrosive fumes.</p>
HAZCHEM	Not Applicable

AMC CALCIUM CHLORIDE

SECTION 6 ACCIDENTAL RELEASE MEASURES

Personal precautions, protective equipment and emergency procedures

See section 8

Environmental precautions

See section 12

Methods and material for containment and cleaning up

Minor Spills	<ul style="list-style-type: none">Remove all ignition sources.Clean up all spills immediately.
Major Spills	Moderate hazard. <ul style="list-style-type: none">CAUTION: Advise personnel in area.

Personal Protective Equipment advice is contained in Section 8 of the SDS.

SECTION 7 HANDLING AND STORAGE

Precautions for safe handling

Safe handling	<ul style="list-style-type: none">Avoid all personal contact, including inhalation.Wear protective clothing when risk of exposure occurs.
Other information	<ul style="list-style-type: none">Material is hygroscopic, i.e. absorbs moisture from the air. Keep containers well sealed in storage.Store in original containers.Keep containers securely sealed.

Conditions for safe storage, including any incompatibilities

Suitable container	<ul style="list-style-type: none">DO NOT use aluminium or galvanised containersPolyethylene or polypropylene container.Check all containers are clearly labelled and free from leaks.
Storage incompatibility	<p>Inorganic alkaline earth metal derivative. Derivative of very electropositive metal. Calcium chloride (and its hydrates):</p> <ul style="list-style-type: none">are incompatible with boric acid, calcium oxide, bromine trifluoride, 2-furan, percarboxylic acidmay produce explosive hydrogen gas on contact with zinccatalyse exothermic polymerisation of methyl vinyl etherproduce heat on contact with waterattack metals <p>Addition of a quantity of calcium chloride to boiling water has generated heat sufficient to cause a violent steam explosion on several occasions</p> <ul style="list-style-type: none">Metals and their oxides or salts may react violently with chlorine trifluoride and bromine trifluoride.These trifluorides are hypergolic oxidisers.In presence of moisture, the material is corrosive to aluminium, zinc and tin producing highly flammable hydrogen gas.

SECTION 8 EXPOSURE CONTROLS / PERSONAL PROTECTION

Control parameters

OCCUPATIONAL EXPOSURE LIMITS (OEL)

INGREDIENT DATA

Not Available

EMERGENCY LIMITS

Ingredient	Material name	TEEL-1	TEEL-2	TEEL-3
calcium chloride	Calcium chloride	12 mg/m3	130 mg/m3	790 mg/m3

Ingredient	Original IDLH	Revised IDLH
calcium chloride	Not Available	Not Available

MATERIAL DATA


It is the goal of the ACGIH (and other Agencies) to recommend TLVs (or their equivalent) for all substances for which there is evidence of health effects at airborne concentrations encountered in the workplace.

AMC CALCIUM CHLORIDE

At this time no TLV has been established, even though this material may produce adverse health effects (as evidenced in animal experiments or clinical experience).

Sensory irritants are chemicals that produce temporary and undesirable side-effects on the eyes, nose or throat. Historically occupational exposure standards for these irritants have been based on observation of workers' responses to various airborne concentrations.

Exposure controls

Appropriate engineering controls	Engineering controls are used to remove a hazard or place a barrier between the worker and the hazard. Well-designed engineering controls can be highly effective in protecting workers and will typically be independent of worker interactions to provide this high level of protection.
Personal protection	
Eye and face protection	<ul style="list-style-type: none"> ▶ Safety glasses with side shields. ▶ Chemical goggles.
Skin protection	See Hand protection below
Hands/feet protection	<p>The selection of suitable gloves does not only depend on the material, but also on further marks of quality which vary from manufacturer to manufacturer. Where the chemical is a preparation of several substances, the resistance of the glove material can not be calculated in advance and has therefore to be checked prior to the application. Experience indicates that the following polymers are suitable as glove materials for protection against undissolved, dry solids, where abrasive particles are not present.</p> <ul style="list-style-type: none"> ▶ polychloroprene.
Body protection	See Other protection below
Other protection	<ul style="list-style-type: none"> ▶ Overalls. ▶ P.V.C.
Thermal hazards	Not Available

Respiratory protection

Particulate. (AS/NZS 1716 & 1715, EN 143:2000 & 149:001, ANSI Z88 or national equivalent)

- ▶ Respirators may be necessary when engineering and administrative controls do not adequately prevent exposures.
- ▶ The decision to use respiratory protection should be based on professional judgment that takes into account toxicity information, exposure measurement data, and frequency and likelihood of the worker's exposure - ensure users are not subject to high thermal loads which may result in heat stress or distress due to personal protective equipment (powered, positive flow, full face apparatus may be an option).
- ▶ Published occupational exposure limits, where they exist, will assist in determining the adequacy of the selected respiratory protection. These may be government mandated or vendor recommended.
- ▶ Certified respirators will be useful for protecting workers from inhalation of particulates when properly selected and fit tested as part of a complete respiratory protection program.
- ▶ Use approved positive flow mask if significant quantities of dust becomes airborne.
- ▶ Try to avoid creating dust conditions.

SECTION 9 PHYSICAL AND CHEMICAL PROPERTIES

Information on basic physical and chemical properties

Appearance	Material is hygroscopic, absorbs moisture from surrounding air. Small white crystals, granules, or flakes. No odour.		
Physical state	Divided Solid	Relative density (Water = 1)	2.15
Odour	Not Available	Partition coefficient n-octanol / water	Not Available
Odour threshold	Not Available	Auto-ignition temperature (°C)	Not Applicable
pH (as supplied)	Not Applicable	Decomposition temperature	Not available.
Melting point / freezing point (°C)	772	Viscosity (cSt)	Not Applicable
Initial boiling point and boiling range (°C)	>1600	Molecular weight (g/mol)	110.99
Flash point (°C)	Not Applicable	Taste	Not Available
Evaporation rate	Not Applicable	Explosive properties	Not Available
Flammability	Not Applicable	Oxidising properties	Not Available

AMC CALCIUM CHLORIDE

Upper Explosive Limit (%)	Not Applicable	Surface Tension (dyn/cm or mN/m)	Not Applicable
Lower Explosive Limit (%)	Not Applicable	Volatile Component (%vol)	Nil
Vapour pressure (kPa)	Negligible	Gas group	Not Available
Solubility in water (g/L)	Miscible	pH as a solution (1%)	Not available.
Vapour density (Air = 1)	Not Applicable	VOC g/L	Not Applicable

SECTION 10 STABILITY AND REACTIVITY

Reactivity	See section 7
Chemical stability	<ul style="list-style-type: none"> Unstable in the presence of incompatible materials. Product is considered stable.
Possibility of hazardous reactions	See section 7
Conditions to avoid	See section 7
Incompatible materials	See section 7
Hazardous decomposition products	See section 5

SECTION 11 TOXICOLOGICAL INFORMATION

Information on toxicological effects

Inhaled	<p>The material is not thought to produce either adverse health effects or irritation of the respiratory tract following inhalation (as classified by EC Directives using animal models). Nevertheless, adverse systemic effects have been produced following exposure of animals by at least one other route and good hygiene practice requires that exposure be kept to a minimum and that suitable control measures be used in an occupational setting.</p> <p>Persons with impaired respiratory function, airway diseases and conditions such as emphysema or chronic bronchitis, may incur further disability if excessive concentrations of particulate are inhaled.</p> <p>If prior damage to the circulatory or nervous systems has occurred or if kidney damage has been sustained, proper screenings should be conducted on individuals who may be exposed to further risk if handling and use of the material result in excessive exposures.</p>
Ingestion	<p>Accidental ingestion of the material may be harmful; animal experiments indicate that ingestion of less than 150 gram may be fatal or may produce serious damage to the health of the individual.</p> <p>Compared with other metals, the calcium ion and most calcium compounds have low toxicity. Acute calcium poisoning is rare, and difficult to achieve unless calcium compounds are administered intravenously or taken in high doses over a prolonged period..</p> <p>[Use as a food additive indicates tolerance of small amounts, but irritant properties and toxic effects of large amounts are well documented. Estimated lethal dose for adult is 30 grams.</p>
Skin Contact	<p>Skin contact is not thought to produce harmful health effects (as classified under EC Directives using animal models). Systemic harm, however, has been identified following exposure of animals by at least one other route and the material may still produce health damage following entry through wounds, lesions or abrasions.</p> <p>Repeated exposure may cause skin cracking, flaking or drying following normal handling and use.</p> <p>Open cuts, abraded or irritated skin should not be exposed to this material</p> <p>Solution of material in moisture on the skin, or perspiration, may increase irritant effects</p> <p>Entry into the blood-stream through, for example, cuts, abrasions, puncture wounds or lesions, may produce systemic injury with harmful effects. Examine the skin prior to the use of the material and ensure that any external damage is suitably protected.</p> <p>[If skin is wet or moist with perspiration, superficial burns may result. Contact with abraded skin or cuts may rapidly cause severe skin burns.</p>
Eye	<p>Evidence exists, or practical experience predicts, that the material may cause severe eye irritation in a substantial number of individuals and/or may produce significant ocular lesions which are present twenty-four hours or more after instillation into the eye(s) of experimental animals. Eye contact may cause significant inflammation with pain.</p>
Chronic	<p>Prolonged or repeated skin contact may cause drying with cracking, irritation and possible dermatitis following. Limited evidence suggests that repeated or long-term occupational exposure may produce cumulative health effects involving organs or biochemical systems.</p> <p>High blood concentrations of calcium ion may give rise to vasodilation and depress cardiac function leading to hypotension and syncope. Calcium ions enhance the effects of digitalis on the heart and may precipitate digitalis intoxication.</p> <p>Long term exposure to high dust concentrations may cause changes in lung function (i.e. pneumoconiosis) caused by particles less than 0.5 micron penetrating and remaining in the lung. A prime symptom is breathlessness.</p>

AMC CALCIUM CHLORIDE

calcium chloride	TOXICITY	IRRITATION
	Oral (rat) LD50: 1000 mg/kg ^[2]	Eye (unknown): severe* [ICI] Skin (unknown): moderate*
Legend:	1. Value obtained from Europe ECHA Registered Substances - Acute toxicity 2. * Value obtained from manufacturer's SDS. Unless otherwise specified data extracted from RTECS - Register of Toxic Effect of chemical Substances	

CALCIUM CHLORIDE	<p>for calcium:</p> <p>Toxicity from calcium is not common because the gastrointestinal tract normally limits the amount of calcium absorbed. Therefore, short-term intake of large amounts of calcium does not generally produce any ill effects aside from constipation and an increased risk of kidney stones .</p> <p>The material may produce severe irritation to the eye causing pronounced inflammation. Repeated or prolonged exposure to irritants may produce conjunctivitis.</p> <p>The material may cause skin irritation after prolonged or repeated exposure and may produce a contact dermatitis (nonallergic). This form of dermatitis is often characterised by skin redness (erythema) and swelling the epidermis.</p>
-------------------------	--

Acute Toxicity	✓	Carcinogenicity	⊘
Skin Irritation/Corrosion	⊘	Reproductivity	⊘
Serious Eye Damage/Irritation	✓	STOT - Single Exposure	⊘
Respiratory or Skin sensitisation	⊘	STOT - Repeated Exposure	⊘
Mutagenicity	⊘	Aspiration Hazard	⊘

Legend: ✗ – Data available but does not fill the criteria for classification
 ✓ – Data available to make classification
 ⊘ – Data Not Available to make classification

SECTION 12 ECOLOGICAL INFORMATION

Toxicity

calcium chloride	ENDPOINT	TEST DURATION (HR)	SPECIES	VALUE	SOURCE
	LC50	96	Fish	=3mg/L	1
	EC50	48	Crustacea	=52mg/L	1
	EC50	96	Algae or other aquatic plants	3130mg/L	4
	BCFD	48	Crustacea	0.0832425mg/L	4
	NOEC	48	Crustacea	260.12mg/L	4
Legend:	Extracted from 1. IUCLID Toxicity Data 2. Europe ECHA Registered Substances - Ecotoxicological Information - Aquatic Toxicity 3. EPIWIN Suite V3.12 (QSAR) - Aquatic Toxicity Data (Estimated) 4. US EPA, Ecotox database - Aquatic Toxicity Data 5. ECETOC Aquatic Hazard Assessment Data 6. NITE (Japan) - Bioconcentration Data 7. METI (Japan) - Bioconcentration Data 8. Vendor Data				

for calcium chloride:

Environmental fate:

Calcium chlorides vapour pressure is negligible and its water solubility is 745 g/L at 20 deg C. Calcium chloride is readily dissociated into calcium and chloride ions in water. These physico-chemical properties indicate that calcium chloride released into the environment is distributed into the water compartment in the form of calcium and chloride ions.

Calcium provides an important link between tectonics, climate and the carbon cycle. In the simplest terms, uplift of mountains exposes Ca-bearing rocks to chemical weathering and releases Ca²⁺ into surface water.

Although inorganic chloride ions are not normally considered toxic they can exist in effluents at acutely toxic levels (chloride >3000 mg/l). The resulting salinity can exceed the tolerances of most freshwater organisms.

DO NOT discharge into sewer or waterways.

Persistence and degradability

Ingredient	Persistence: Water/Soil	Persistence: Air
	No Data available for all ingredients	No Data available for all ingredients

Bioaccumulative potential

Ingredient	Bioaccumulation
	No Data available for all ingredients

AMC CALCIUM CHLORIDE

Mobility in soil

Ingredient	Mobility
	No Data available for all ingredients

SECTION 13 DISPOSAL CONSIDERATIONS

Waste treatment methods

Product / Packaging disposal	<ul style="list-style-type: none"> Containers may still present a chemical hazard/ danger when empty. Return to supplier for reuse/ recycling if possible. <p>Legislation addressing waste disposal requirements may differ by country, state and/ or territory. Each user must refer to laws operating in their area.</p> <ul style="list-style-type: none"> DO NOT allow wash water from cleaning or process equipment to enter drains. It may be necessary to collect all wash water for treatment before disposal. Recycle wherever possible or consult manufacturer for recycling options. Consult State Land Waste Management Authority for disposal.
------------------------------	--

SECTION 14 TRANSPORT INFORMATION

Labels Required

Marine Pollutant	NO
HAZCHEM	Not Applicable

Land transport (ADG): NOT REGULATED FOR TRANSPORT OF DANGEROUS GOODS

Air transport (ICAO-IATA / DGR): NOT REGULATED FOR TRANSPORT OF DANGEROUS GOODS

Sea transport (IMDG-Code / GGVSee): NOT REGULATED FOR TRANSPORT OF DANGEROUS GOODS

Transport in bulk according to Annex II of MARPOL and the IBC code

Not Applicable

SECTION 15 REGULATORY INFORMATION

Safety, health and environmental regulations / legislation specific for the substance or mixture

CALCIUM CHLORIDE(10043-52-4) IS FOUND ON THE FOLLOWING REGULATORY LISTS

Australia Hazardous Substances Information System - Consolidated Lists		Australia Inventory of Chemical Substances (AICS)	
National Inventory	Status		
Australia - AICS	Y		
Canada - DSL	Y		
Canada - NDSL	N (calcium chloride)		
China - IECSC	Y		
Europe - EINEC / ELINCS / NLP	Y		
Japan - ENCS	Y		
Korea - KECI	Y		
New Zealand - NZIoC	Y		
Philippines - PICCS	Y		
USA - TSCA	Y		
Legend:	Y = All ingredients are on the inventory N = Not determined or one or more ingredients are not on the inventory and are not exempt from listing(see specific ingredients in brackets)		

SECTION 16 OTHER INFORMATION

Other information

Classification of the preparation and its individual components has drawn on official and authoritative sources as well as independent review by the Chemwatch Classification committee using available literature references.

AMC CALCIUM CHLORIDE

The SDS is a Hazard Communication tool and should be used to assist in the Risk Assessment. Many factors determine whether the reported Hazards are Risks in the workplace or other settings.

Definitions and abbreviations

PC—TWA: Permissible Concentration-Time Weighted Average

PC—STEL: Permissible Concentration-Short Term Exposure Limit

IARC: International Agency for Research on Cancer

ACGIH: American Conference of Governmental Industrial Hygienists

STEL: Short Term Exposure Limit

TEEL: Temporary Emergency Exposure Limit.

IDLH: Immediately Dangerous to Life or Health Concentrations

OSF: Odour Safety Factor

NOAEL :No Observed Adverse Effect Level

LOAEL: Lowest Observed Adverse Effect Level

TLV: Threshold Limit Value

LOD: Limit Of Detection

OTV: Odour Threshold Value

BCF: BioConcentration Factors

BEI: Biological Exposure Index

This document is copyright.

Apart from any fair dealing for the purposes of private study, research, review or criticism, as permitted under the Copyright Act, no part may be reproduced by any process without written permission from CHEMWATCH.



Material Safety Data Sheet

NFPA	HMIS (U.S.A.)	Rating	Protective Clothing	DOT (pictograms)
	Health Hazard (2*) Fire Hazard (1) Reactivity (0) Personal Protection (H)	0 Insignificant 1 Slight 2 Moderate 3 High 4 Extreme		

Section I. Chemical Product and Company Identification

Product Name	ANTIFREEZE	Code	W269
Synonym	Universal Antifreeze, Radiator Antifreeze, Diesel Antifreeze, Petro-Canada Antifreeze-Coolant, Petro-Canada Heavy Duty Antifreeze-Coolant, Pre-Mix Antifreeze, Petro-Canada Premium Radiator Antifreeze.	DSL	On the DSL.
Manufacturer	PETRO-CANADA P.O. Box 2844 Calgary, Alberta T2P 3E3	TSCA	On TSCA list.
Material Uses	Used as an engine antifreeze coolant.	In case of Emergency	Petro-Canada: 403-296-3000 Canutec Transportation: 613-996-6666 Poison Control Centre: Consult local telephone directory for emergency number(s).

Section II. Composition and Information on Ingredients

			Exposure Limits (ACGIH)		
Name	CAS #	% (V/V)	TLV-TWA(8 h)	STEL	CEILING
1) Ethylene glycol	107-21-1	≥55	Not established	Not established	100 mg/m ³ (aerosol)
2) Sodium tetraborate pentahydrate	1330-43-4	≤5	1 mg/m ³	Not established	Not established
Manufacturer Recommendation	Not applicable				
Other Exposure Limits	Consult local, state, provincial or territory authorities for acceptable exposure limits.				

Section III. Hazards Identification.

Potential Health Effects	Contact can cause slight irritation of skin, eyes and respiratory tract. Extremely dangerous in case of ingestion. For more information, refer to Section 11.
--------------------------	---

Section IV. First Aid Measures

Eye Contact	IMMEDIATELY flush eyes with running water for at least 15 minutes, keeping eyelids open. Seek medical attention.
Skin Contact	Remove contaminated clothing - launder before reuse. Wash gently and thoroughly the contaminated skin with running water and non-abrasive soap. Seek medical attention.
Inhalation	Evacuate the victim to a safe area as soon as possible. If the victim is not breathing, perform artificial respiration. Allow the victim to rest in a well ventilated area. Seek medical attention.
Ingestion	DO NOT induce vomiting because of danger of aspirating liquid into lungs. Seek medical attention.
Note to Physician	Not available

Section V. Fire-fighting Measures

Flammability	May be combustible at high temperature.	Flammable Limits	Lower: 3.2%, Upper: 15.3%
Flash Points	Closed Cup: 116°C (Tagliabue) Open Cup: 116°C (Cleveland)	Auto-Ignition Temperature	413°C
Fire Hazards in Presence of Various Substances	Combustible in presence of open flames and sparks.	Explosion Hazards in Presence of Various Substances	Not a product presenting risks of explosion.
Products of Combustion	Carbon oxides (CO, CO ₂), smoke and irritating vapours as products of incomplete combustion.		
Fire Fighting Media and Instructions	SMALL FIRE: Use DRY chemicals, CO ₂ , water spray or foam. LARGE FIRE: Use water spray, fog or foam. DO NOT use water jet.		

Section VI. Accidental Release Measures

Material Release or Spill	Small spill or leak: Dilute with water and mop up or absorb with an inert DRY material and place in an appropriate waste disposal container. Large spill or leak: Absorb with an inert material and put the spilled material in an appropriate waste disposal. Dispose of in accordance with regional regulations.
----------------------------------	---

Section VII. Handling and Storage

Handling	Avoid contamination with reactive substances. After handling, always wash hands thoroughly with soap and water.
Storage	Keep container dry. Keep container tightly closed. Keep in a cool, well-ventilated place.

Section VIII. Exposure Controls/Personal Protection

Engineering Controls	For normal application, special ventilation is not necessary. If user's operations generate vapours or mist, use ventilation to keep exposure to airborne contaminants below the exposure limit. Make-up air should always be supplied to balance air removed by exhaust ventilation. Ensure that eyewash station and safety shower are close to work-station.
Personal Protection -	<i>The selection of personal protective equipment varies, depending upon conditions of use.</i>
Eyes	Eye protection (i.e., safety glasses, safety goggles and/or face shield) should be determined based on conditions of use. If product is used in an application where splashing may occur, the use of safety goggles and/or a face shield should be considered.
Body	Wear appropriate clothing to prevent skin contact. As a minimum long sleeves and trousers should be worn.
Respiratory	Where concentrations in air may exceed the occupational exposure limits given in Section 2 (and those applicable to your area) and where engineering, work practices or other means of exposure reduction are not adequate, NIOSH approved respirators may be necessary to prevent overexposure by inhalation.
Hands	Wear appropriate chemically protective gloves. When handling hot product ensure gloves are heat resistant and insulated.
Feet	Wear appropriate footwear to prevent product from coming in contact with feet and skin.

Section IX. Physical and Chemical Properties

Physical State and Appearance	Clear viscous liquid.	Viscosity	Not available
Colour	Green.	Pour Point	Not available
Odour	Odourless.	Softening Point	Not applicable.
Odour Threshold	Not available	Dropping Point	Not applicable.
Boiling Point	129 to 197°C (264 to 387°F)	Penetration	Not applicable.
Density	1.115 to 1.145 (Water = 1)	Oil / Water Dist. Coeff.	Not available
Vapour Density	2.1 (Air=1).	Ionicity (in water)	Not available
Vapour Pressure	0.06 mmHg @ 20°C (68°F).	Dispersion Properties	Not available
Volatility	0% (w/w)	Solubility	Soluble in water, methanol and diethyl ether.

Section X. Stability and Reactivity

Corrosivity	Not available		
Stability	The product is stable.	Hazardous Polymerization	Will not occur under normal working conditions.
Incompatible Substances / Conditions to Avoid	Reactive with oxidizing agents, acids and alkalis.	Decomposition Products	May release COx, smoke and irritating vapours when heated to decomposition.

Section XI. Toxicological Information

Routes of Entry	Eye contact and ingestion.
Acute Lethality	LD50: 4700 mg/kg (oral/rat). [Ethylene Glycol] LD50: 9530 mg/kg (dermal/rabbit). [Ethylene Glycol]
Chronic or Other Toxic Effects	
Dermal Route:	Slightly hazardous in case of skin contact (irritant).
Inhalation Route:	Slightly hazardous in case of inhalation (lung irritant). Can cause nausea, headaches and vomiting.
Oral Route:	Extremely dangerous in case of ingestion.
Eye Irritation/Inflammation:	Slightly hazardous in case of eye contact (irritant).
Immunotoxicity:	Not available
Skin Sensitization:	Not available
Respiratory Tract Sensitization:	Not available
Mutagenic:	Not available

Reproductive Toxicity:	Not available
Teratogenicity/Embryotoxicity:	Fetotoxic and teratogenic in mice at levels below maternal toxicity.
Carcinogenicity (ACGIH):	ACGIH A4: not classifiable as a human carcinogen.
Carcinogenicity (IARC):	Not available
Carcinogenicity (NTP):	Not available
Carcinogenicity (IRIS):	Not available
Carcinogenicity (OSHA):	Not available
Other Considerations	The substance may be toxic to kidneys and liver. Repeated or prolonged exposure to the substance can produce target organs damage. Repeated exposure to a highly toxic material may produce general deterioration of health by an accumulation in one or many human organs.

Section XII. Ecological Information

Environmental Fate	Not available	Persistence/ Bioaccumulation Potential	Not available
BOD5 and COD	Not available	Products of Biodegradation	Not available
Additional Remarks	No additional remark.		


Section XIII. Disposal Considerations

Waste Disposal	Preferred waste management priorities are: (1) recycle or reprocess; (2) incineration with energy recovery; (3) disposal at licensed waste disposal facility. Ensure that disposal or reprocessing is in compliance with government requirements and local disposal regulations. Consult your local or regional authorities.
-----------------------	--

Section XIV. Transport Information

DOT Classification	Not a DOT controlled material (United States).	Special Provisions for Transport	Not applicable.
---------------------------	--	---	-----------------

Section XV. Regulatory Information

Other Regulations	<p>This product is acceptable for use under the provisions of WHMIS-CPR. All components of this formulation are listed on the CEPA-DSL (Domestic Substances List).</p> <p>All components of this formulation are listed on the US EPA-TSCA Inventory.</p> <p>This product has been classified in accordance with the hazard criteria of the Controlled Products Regulations (CPR) and the MSDS contains all of the information required by the CPR.</p> <p>Please contact Product Safety for more information.</p>		
DSD/DPD (EEC)	Not evaluated.	WHMIS (Canada)	D-2A
ADR (Europe) (Pictograms)	NOT EVALUATED FOR EUROPEAN TRANSPORT NON ÉVALUÉ POUR LE TRANSPORT EUROPÉEN	TDG (Canada) (Pictograms)	

Section XVI. Other Information

References	Available upon request. * Marque de commerce de Petro-Canada - Trademark		
Glossary	<div style="display: flex; flex-wrap: wrap;"> <div style="flex: 50%;"> <p>ACGIH - American Conference of Governmental Industrial Hygienists</p> <p>ADR - Agreement on Dangerous goods by Road (Europe)</p> <p>ASTM - American Society for Testing and Materials (</p> <p>BOD5 - Biological Oxygen Demand in 5 days</p> <p>CAN/CGA B149.2 Propane Installation Code</p> <p>CAS - Chemical Abstract Services</p> <p>CEPA - Canadian Environmental Protection Act</p> <p>CERCLA - Comprehensive Environmental Response, Compensation and Liability Act</p> <p>CFR - Code of Federal Regulations</p> <p>CHIP - Chemicals Hazard Information and Packaging Approved Supply List</p> <p>COD5 - Chemical Oxygen Demand in 5 days</p> <p>CPR - Controlled Products Regulations</p> <p>DOT - Department of Transport</p> <p>DSCL - Dangerous Substances Classification and Labeling (Europe)</p> <p>DSD/DPD - Dangerous Substances or Dangerous Preparations Directives (Europe)</p> <p>DSL - Domestic Substance List</p> <p>EEC/EU - European Economic Community/European Union</p> <p>EINECS - European Inventory of Existing Commercial Chemical Substances</p> <p>EPCRA - Emergency Planning and Community Right to Know Act</p> </div> <div style="flex: 50%;"> <p>IRIS - Integrated Risk Information System</p> <p>LD50/LC50 - Lethal Dose/Concentration kill 50%</p> <p>LDLo/LCLo - Lowest Published Lethal Dose/Concentration</p> <p>NAERG'96 - North American Emergency Response Guide Book (1996)</p> <p>NFPA - National Fire Prevention Association</p> <p>NIOSH - National Institute for Occupational Safety & Health</p> <p>NPRI - National Pollutant Release Inventory</p> <p>NSNR - New Substances Notification Regulations (Canada)</p> <p>NTP - National Toxicology Program</p> <p>OSHA - Occupational Safety & Health Administration</p> <p>PEL - Permissible Exposure Limit</p> <p>RCRA - Resource Conservation and Recovery Act</p> <p>SARA - Superfund Amendments and Reorganization Act</p> <p>SD - Single Dose</p> <p>STEL - Short Term Exposure Limit (15 minutes)</p> <p>TDG - Transportation Dangerous Goods (Canada)</p> <p>TDLo/TCLo - Lowest Published Toxic Dose/Concentration</p> <p>TLm - Median Tolerance Limit</p> <p>TLV-TWA - Threshold Limit Value-Time Weighted Average</p> <p>TSCA - Toxic Substances Control Act</p> <p>USEPA - United States Environmental Protection Agency</p> </div> </div>		

FDA - Food and Drug Administration
FIFRA - Federal Insecticide, Fungicide and Rodenticide Act
HCS - Hazardous Communication System
HMIS - Hazardous Material Information System
IARC - International Agency for Research on Cancer

USP - United States Pharmacopoeia
WHMIS - Workplace Hazardous Material Information System

For Copy of MSDS

Western Canada, telephone: 403-296-4158; fax: 403-296-6551
Ontario & Central Canada, telephone: 1-800-668-0220; fax: 1-800-837-1228
Quebec & Eastern Canada, telephone: 514-640-8308; fax: 514-640-8385

For Product Safety Information: (905) 804-4752

Prepared by Product Safety - TAR on 7/3/2001.

Data entry by Product Safety - JDW.

To the best of our knowledge, the information contained herein is accurate. However, neither the above named supplier nor any of its subsidiaries assumes any liability whatsoever for the accuracy or completeness of the information contained herein. Final determination of suitability of any material is the sole responsibility of the user. All materials may present unknown hazards and should be used with caution. Although certain hazards are described herein, we cannot guarantee that these are the only hazards that exist.

MATERIAL SAFETY DATA SHEET
LEAD ACID BATTERY WET, FILLED WITH
ACID
(US, CN, EU Version for International Trade)

SECTION 1: PRODUCT AND COMPANY IDENTIFICATION

PRODUCT NAME: Lead Acid Battery Wet, Filled With Acid
OTHER PRODUCT NAMES: Electric Storage Battery, SLI or Industrial Battery, UN2794

MANUFACTURER: East Penn Manufacturing Company, Inc.
DIVISION: Dekal Road
ADDRESS: Lyon Station, PA 19536 USA

EMERGENCY TELEPHONE NUMBERS: US: CHEMTREC 1-800-424-9300
CN: CHEMTREC 1-800-424-9300
Outside US: 1-703-527-3887

NON-EMERGENCY HEALTH/SAFETY INFORMATION: 1-610-682-6361

CHEMICAL FAMILY: This product is a wet lead acid storage battery. May also include gel/absorbed electrolyte type lead acid battery types.

PRODUCT USE: Industrial/Commercial electrical storage batteries.

This product is considered a Hazardous Substance, Preparation or Article that is regulated under US-OSHA; CAN-WHMIS; IOSH; ISO; UK-CHIP; or EU Directives (67/548/EEC-Dangerous Substance Labelling, 98/24/EC-Chemical Agents at Work, 99/45/EC-Preparation Labelling, 2001/58/EC-MSDS Content, and 1907/2006/EC-REACH), and an MSDS/SDS is required for this product considering that when used as recommended or intended, or under ordinary conditions, it may present a health and safety exposure or other hazard.

Additional Information

This product may not be compatible with all environments, such as those containing liquid solvents or extreme temperature or pressure. Please request information if considering use under extreme conditions or use beyond current product labelling.

SECTION 2: HAZARDS IDENTIFICATION

GHS Classification:

Health	Environmental	Physical
Acute Toxicity – Not listed (NL) Eye Corrosion – Corrosive* Skin Corrosion – Corrosive* Skin Sensitization – NL Mutagenicity/Carcinogenicity – NL Reproductive/Developmental – NL Target Organ Toxicity (Repeated) – NL	Aquatic Toxicity – NL	NFPA – Flammable gas, hydrogen (during charging) CN - NL EU - NL

*as sulfuric acid

GHS Label: Lead Acid Battery, Wet

Symbols: C (Corrosive)



Hazard Statements

Contact with internal components may cause irritation of severe burns. Irritating to eyes, respiratory system, and skin.

Precautionary Statements

Keep out of reach of children. Keep containers tightly closed. Avoid heat, sparks, and open flame while charging batteries. Avoid contact with internal acid.

EMERGENCY OVERVIEW: May form explosive air/gas mixture during charging. Contact with internal components may cause irritation or severe burns. Irritating to eyes, respiratory system, and skin. Prolonged inhalation or ingestion may result in serious damage to health. Pregnant

MATERIAL SAFETY DATA SHEET

LEAD ACID BATTERY WET, FILLED WITH ACID

(US, CN, EU Version for International Trade)

women exposed to internal components may experience reproductive/developmental effects.

POTENTIAL HEALTH EFFECTS:

EYES: Direct contact of internal electrolyte liquid with eyes may cause severe burns or blindness.
SKIN: Direct contact of internal electrolyte liquid with the skin may cause skin irritation or damaging burns.
INGESTION: Swallowing this product may cause severe burns to the esophagus and digestive tract and harmful or fatal lead poisoning. Lead ingestion may cause nausea, vomiting, weight loss, abdominal spasms, fatigue, and pain in the arms, legs and joints.
INHALATION: Respiratory tract irritation and possible long-term effects.

ACUTE HEALTH HAZARDS:

Repeated or prolonged contact may cause mild skin irritation.

CHRONIC HEALTH HAZARDS:

Lead poisoning if persons are exposed to internal components of the batteries. Lead absorption may cause nausea, vomiting, weight loss, abdominal spasms, fatigue, and pain in the arms, legs and joints. Other effects may include central nervous system damage, kidney dysfunction, and potential reproductive effects. Chronic inhalation of sulfuric acid mist may increase the risk of lung cancer.

MEDICAL CONDITIONS GENERALLY AGGRAVATED BY EXPOSURE:

Respiratory and skin diseases may predispose the user to acute and chronic effects of sulfuric acid and/or lead. Children and pregnant women must be protected from lead exposure. Persons with kidney disease may be at increased risk of kidney failure.

Additional Information

No health effects are expected related to normal use of this product as sold.

SECTION 3: COMPOSITION/INFORMATION ON INGREDIENTS

INGREDIENTS (Chemical/Common Names):	CAS No.:	% by Wt:	EC No.:
Lead, inorganic	7439-92-1	43–70 (average: 65)	231-100-4
Sulfuric acid	7664-93-9	20–44 (average: 25)	231-639-5
Antimony	7440-36-0	0–4 (average: 1)	231-146-5
Arsenic	7440-38-2	<0.01	231-148-6
Polypropylene	9003-07-0	5–10 (average: 8)	NA
NA: Not applicable; ND: Not determined			

Additional Information

These ingredients reflect components of the finished product related to performance of the product as distributed into commerce.

SECTION 4: FIRST AID MEASURES

EYE CONTACT: Flush eyes with large amounts of water for at least 15 minutes. Seek immediate medical attention if eyes have been exposed directly to acid.
SKIN CONTACT: Flush affected area(s) with large amounts of water using deluge emergency shower, if available, shower for at least 15 minutes. Remove contaminated clothing. If symptoms persist, seek medical attention.
INGESTION: If swallowed, give large amounts of water. Do NOT induce vomiting or aspiration into the lungs may occur and can cause permanent injury or death.
INHALATION: If breathing difficulties develop, remove person to fresh air. If symptoms persist, seek medical attention.

SECTION 5: FIRE-FIGHTING MEASURES

SUITABLE/UNSUITABLE EXTINGUISHING MEDIA:

Dry chemical, carbon dioxide, water, foam. Do not use water on live electrical circuits.

MATERIAL SAFETY DATA SHEET
LEAD ACID BATTERY WET, FILLED WITH
ACID
(US, CN, EU Version for International Trade)

SPECIAL FIREFIGHTING PROCEDURES & PROTECTIVE EQUIPMENT:

Use appropriate media for surrounding fire. Do not use carbon dioxide directly on cells. Avoid breathing vapours. Use full protective equipment (bunker gear) and self-contained breathing apparatus.

UNUSUAL FIRE AND EXPLOSION HAZARDS:

Batteries evolve flammable hydrogen gas during charging and may increase fire risk in poorly ventilated areas near sparks, excessive heat or open flames.

SPECIFIC HAZARDS IN CASE OF FIRE:

Thermal shock may cause battery case to crack open. Containers may explode when heated.

Additional Information

Firefighting water runoff and dilution water may be toxic and corrosive and may cause adverse environmental impacts.

SECTION 6: ACCIDENTAL RELEASE MEASURES

PERSONAL PRECAUTIONS:

Avoid Contact with Skin. Neutralize any spilled electrolyte with neutralizing agents, such as soda ash, sodium bicarbonate, or very dilute sodium hydroxide solutions.

ENVIRONMENTAL PRECAUTIONS:

Prevent spilled material from entering sewers and waterways.

SPILL CONTAINMENT & CLEANUP METHODS/MATERIALS:

Add neutralizer/absorbent to spill area. Sweep or shovel spilled material and absorbent and place in approved container. Dispose of any non-recyclable materials in accordance with local, state, provincial or federal regulations.

Additional Information

Lead acid batteries and their plastic cases are recyclable. Contact your East Penn representative for recycling information.

SECTION 7: HANDLING AND STORAGE

PRECAUTIONS FOR SAFE HANDLING AND STORAGE:

- Keep containers tightly closed when not in use.
- If battery case is broken, avoid contact with internal components.
- Do not handle near heat, sparks, or open flames.
- Protect containers from physical damage to avoid leaks and spills.
- Place cardboard between layers of stacked batteries to avoid damage and short circuits.
- Do not allow conductive material to touch the battery terminals. A dangerous short-circuit may occur and cause battery failure and fire.

OTHER PRECAUTIONS (e.g.; Incompatibilities):

Keep away from combustible materials, organic chemicals, reducing substances, metals, strong oxidizers and water.

SECTION 8: EXPOSURE CONTROLS/PERSONAL PROTECTION

ENGINEERING CONTROLS/SYSTEM DESIGN INFORMATION:

Charge in areas with adequate ventilation.

VENTILATION:

General dilution ventilation is acceptable.

RESPIRATORY PROTECTION:

Not required for normal conditions of use. See also special firefighting procedures (Section 5).

EYE PROTECTION:

Wear protective glasses with side shields or goggles.

SKIN PROTECTION:

Wear chemical resistant gloves as a standard procedure to prevent skin contact.

OTHER PROTECTIVE CLOTHING OR EQUIPMENT: Chemically impervious apron and face shield recommended when adding water or electrolyte to batteries.

Wash Hands after handling.

EXPOSURE GUIDELINES & LIMITS:

OSHA Permissible Exposure Limit (PEL/TWA)

Lead, inorganic (as Pb)

0.05 mg/m³

Sulfuric acid

1.00 mg/m³

MATERIAL SAFETY DATA SHEET

LEAD ACID BATTERY WET, FILLED WITH ACID

(US, CN, EU Version for International Trade)

EXPOSURE GUIDELINES & LIMITS:

ACGIH	2007 Threshold Limit Value (TLV)	Antimony	0.50 mg/m ³	
		Arsenic	0.01 mg/m ³	
		Lead, inorganic (as Pb)	0.05 mg/m ³	
		Sulfuric acid	0.20 mg/m ³	
Quebec	Permissible Exposure Value (PEV)	Antimony	0.50 mg/m ³	
		Arsenic	0.01 mg/m ³	
		Lead, inorganic (as Pb)	0.15 mg/m ³	
		Sulfuric acid	1.00 mg/m ³	TWA
Ontario	Occupational Exposure Level (OEL)		3.00 mg/m ³	STEV
		Antimony	0.50 mg/m ³	
		Arsenic	0.10 mg/m ³	
		Lead (designated substance)	0.10 mg/m ³	
Netherlands	Maximaal Aanvaarde Concentratie (MAC)	Sulfuric acid	1.00 mg/m ³	TWAEV
			3.00 mg/m ³	STEV
		Antimony	0.50 mg/m ³	
		Arsenic (designated substance)	0.01 mg/m ³	
Germany	Maximale Arbeitsplatzkonzentrationen (MAK)	Lead, inorganic (as Pb)	0.15 mg/m ³	
		Sulfuric acid	1.00 mg/m ³	
		Lead, inorganic (as Pb)	0.10 mg/m ³	
		Sulfuric acid	1.00 mg/m ³	TWA
United Kingdom	Occupational Exposure Standard (OES)		2.00 mg/m ³	STEL
		Antimony	0.50 mg/m ³	
		Lead	0.15 mg/m ³	
		Antimony	0.50 mg/m ³	
		Arsenic	0.10 mg/m ³	

TWA: 8-Hour Time-Weighted Average; STE: Short-Term Exposure; mg/m³: milligrams per cubic meter of air; NE: Not Established; STEV: Short-Term Exposure Value; TWAEV: Time-Weighted Average Exposure Value; STEL: Short-Term Exposure Limit

Additional Information

- Batteries are housed in polypropylene cases which are regulated as total dust or respirable dust only when they are ground up during recycling. The OSHA PEL for dust is 15 mg/m³ as total dust or 5 mg/m³ as respirable dust.
- May be required to meet Domestic Requirements for a Specific Destination(s).

SECTION 9: PHYSICAL AND CHEMICAL PROPERTIES

APPEARANCE:	Industrial/commercial lead acid battery
ODOUR:	Odourless
ODOUR THRESHOLD:	NA
PHYSICAL STATE:	Sulfuric Acid: Liquid; Lead: solid
pH:	<1
BOILING POINT:	235-240° F (113-116° C) (as sulfuric acid)
MELTING POINT:	NA
FREEZING POINT:	NA
VAPOUR PRESSURE:	10 mmHg
VAPOUR DENSITY (AIR = 1):	> 1
SPECIFIC GRAVITY (H₂O = 1):	1.27-1.33
EVAPORATION RATE (n-BuAc=1):	< 1
SOLUBILITY IN WATER:	100% (as sulfuric acid)
FLASH POINT:	Below room temperature (as hydrogen gas)
AUTO-IGNITION TEMPERATURE:	NA
LOWER EXPLOSIVE LIMIT (LEL):	4% (as hydrogen gas)
UPPER EXPLOSIVE LIMIT (UEL):	74% (as hydrogen gas)
PARTITION COEFFICIENT:	NA
VISCOSITY (poise @ 25° C):	Not Available

MATERIAL SAFETY DATA SHEET
LEAD ACID BATTERY WET, FILLED WITH
ACID
(US, CN, EU Version for International Trade)

DECOMPOSITION TEMPERATURE: Not Available

FLAMMABILITY/HMIS HAZARD CLASSIFICATIONS (US/CN/EU): As sulfuric acid

HEALTH: 3 FLAMMABILITY: 0 REACTIVITY: 2

SECTION 10: STABILITY AND REACTIVITY

STABILITY: INCOMPATIBILITY (MATERIAL TO AVOID): HAZARDOUS DECOMPOSITION BY-PRODUCTS: HAZARDOUS POLYMERIZATION: CONDITIONS TO AVOID:	<p>This product is stable under normal conditions at ambient temperature.</p> <p>Strong bases, combustible organic materials, reducing agents, finely divided metals, strong oxidizers, and water.</p> <p>Thermal decomposition will produce sulfur dioxide, sulfur trioxide, carbon monoxide, sulfuric acid mist, and hydrogen.</p> <p>Will not occur</p> <p>Overcharging, sources of ignition</p>
--	---

SECTION 11: TOXICOLOGICAL INFORMATION

ACUTE TOXICITY (Test Results Basis and Comments):

Sulfuric acid: LD50, Rat: 2140 mg/kg
 LC50, Guinea pig: 510 mg/m³
Lead: No data available for elemental lead

SUBCHRONIC/CHRONIC TOXICITY (Test Results and Comments):

Repeated exposure to lead and lead compounds in the workplace may result in nervous system toxicity. Some toxicologists report abnormal conduction velocities in persons with blood lead levels of 50 µg/100 ml or higher. Heavy lead exposure may result in central nervous system damage, encephalopathy and damage to the blood-forming (hematopoietic) tissues.

Additional Information

- Very little chronic toxicity data available for elemental lead.
- Lead is listed by IARC as a 2B carcinogen: possible carcinogen in humans. Arsenic is listed by IARC, ACGIH, and NTP as a carcinogen, based on studies with high doses over long periods of time. The other ingredients in this product, present at equal to or greater than 0,1% of the product, are not listed by OSHA, NTP, or IARC as suspect carcinogens.
- The 19th Amendment to EC Directive 67/548/EEC classified lead compounds, but not lead in metal form, as possibly toxic to reproduction. Risk phrase 61: May cause harm to the unborn child, applies to lead compounds, especially soluble forms.

SECTION 12: ECOLOGICAL INFORMATION

PERSISTENCE & DEGRADABILITY:

Lead is very persistent in soils and sediments. No data available on biodegradation.

BIOACCUMULATIVE POTENTIAL (Including Mobility):

Mobility of metallic lead between ecological compartments is low. Bioaccumulation of lead occurs in aquatic and terrestrial animals and plants, but very little bioaccumulation occurs through the food chain. Most studies have included lead compounds, not solid inorganic lead.

AQUATIC TOXICITY (Test Results & Comments):

Sulfuric acid: 24-hour LC50, fresh water fish (*Brachydanio rerio*): 82 mg/l
 96-hour LOEC, fresh water fish (*Cyprinus carpio*): 22 mg/l (lowest observable effect concentration)
Lead (metal): No data available

Additional Information

- No known effects on stratospheric ozone depletion.
- Volatile organic compounds: 0% (by Volume)
- Water Endangering Class (WGK): NA

SECTION 13: DISPOSAL CONSIDERATIONS

WASTE DISPOSAL METHOD:

Following local, State/Provincial, and Federal/National regulations applicable to end-of-life characteristics will be the responsibility of the end-user.

MATERIAL SAFETY DATA SHEET
LEAD ACID BATTERY WET, FILLED WITH
ACID
(US, CN, EU Version for International Trade)

HAZARDOUS WASTE
CLASS/CODE:

US - Not applicable to finished product as manufactured for distribution into commerce.
CN – Not applicable to finished product as manufactured for distribution into commerce.
EWC – Not applicable to finished product as manufactured for distribution into commerce.

Additional Information

Not Included – **Recycle** or dispose as allowed by local jurisdiction for the end-of-life characteristics as-disposed.

SECTION 14: TRANSPORT INFORMATION

GROUND – US-DOT/CAN-TDG/EU-ADR/APEC-ADR:

Proper Shipping Name	Batteries, Wet, Filled with Acid	ID Number	UN2794
Hazard Class	8	Labels	Corrosive
Packing Group	III		

AIRCRAFT – ICAO-IATA:

Proper Shipping Name	Batteries, Wet, Filled with Acid	ID Number	UN2794
Hazard Class	8	Labels	Corrosive
Packing Group	III		

Reference IATA packing instructions 870

VESSEL – IMO-IMDG:

Proper Shipping Name	Batteries, Wet, Filled with Acid	ID Number	UN2794
Hazard Class	8	Labels	Corrosive
Packing Group	III		

Reference IMDG packing instructions P801

Additional Information

Transport requires proper packaging and paperwork, including the Nature and Quantity of goods, per applicable origin/destination/customs points as-shipped.

SECTION 15: REGULATORY INFORMATION

INVENTORY STATUS:

All components are listed on the TSCA; EINECS/ELINCS; and DSL, unless noted otherwise below.

U.S. FEDERAL REGULATIONS:

TSCA Section 8b – Inventory Status: All chemicals comprising this product are either exempt or listed on the TSCA Inventory.

TSCA Section 12b – Export Notification: If the finished product contains chemicals subject to TSCA Section 12b export notification, they are listed below:

<u>Chemical</u>	<u>CAS #</u>
None	NA

CERCLA (COMPREHENSIVE RESPONSE COMPENSATION, AND LIABILITY ACT)

Chemicals present in the product which could require reporting under the statute:

<u>Chemical</u>	<u>CAS #</u>
Lead	7439-92-1
Sulfuric acid	7664-93-9

SARA TITLE III (SUPERFUND AMENDMENTS AND REAUTHORIZATION ACT)

The finished product contains chemicals subject to the reporting requirements of Section 313 of SARA Title III.

<u>Chemical</u>	<u>CAS #</u>	<u>% wt</u>
Lead	7439-92-1	65
Sulfuric acid	7664-93-9	25

CERCLA SECTION 311/312 HAZARD CATEGORIES: Note that the finished product is exempt from these regulations, but lead and sulfuric acid above the thresholds are reportable on Tier II reports.

Fire Hazard	No
Pressure Hazard	No
Reactivity Hazard	No
Immediate Hazard	Yes (Sulfuric acid is Corrosive)
Delayed Hazard	No

Note: Sulfuric acid is
Hazardous

MATERIAL SAFETY DATA SHEET
LEAD ACID BATTERY WET, FILLED WITH
ACID
(US, CN, EU Version for International Trade)

listed as an Extremely
Substance.

STATE REGULATIONS (US):

California Proposition 65

The following chemicals identified to exist in the finished product as distributed into commerce are known to the State of California to cause cancer, birth defects, or other reproductive harm:

<u>Chemical</u>	<u>CAS #</u>	<u>% Wt</u>
Arsenic (as arsenic oxides)	7440-38-2	<0.1
Strong inorganic acid mists including sulfuric acid	NA	25
Lead	7439-92-1	65

California Consumer Product Volatile Organic Compound Emissions

This Product is not regulated as a Consumer Product for purposes of CARB/OTC VOC Regulations, as-sold for the intended purpose and into the industrial/Commercial supply chain.

INTERNATIONAL REGULATIONS (Non-US):

Canadian Domestic Substance List (DSL)

All ingredients remaining in the finished product as distributed into commerce are included on the Domestic Substances List.

WHMIS Classifications

Class E: Corrosive materials present at greater than 1%

This product has been classified in accordance with the hazard criteria of the Controlled Products Regulations (CPR) and the MSDS contains all the information required by the Controlled Products Regulations.

NPRI and Ontario Regulation 127/01

This product contains the following chemicals subject to the reporting requirements of Canada NPRI +/-or Ont. Reg. 127/01:

<u>Chemical</u>	<u>CAS #</u>	<u>% Wt</u>
Lead	7439-92-1	65
Sulfuric acid	7664-93-9	25

European Inventory of Existing Commercial Chemical Substances (EINECS)

All ingredients remaining in the finished product as distributed into commerce are exempt from, or included on, the European Inventory of Existing Commercial Chemical Substances.

European Communities (EC) Hazard Classification according to directives 67/548/EEC and 1999/45/EC.

<u>R-Phrases</u>	<u>S-Phrases</u>
35, 36, 38	1/2, 26, 30, 45

Additional Information

This product may be subject to Restriction of Hazardous Substances (RoHS) regulations in Europe and China, or may be regulated under additional regulations and laws not identified above, such as for uses other than described or as-designed/as-intended by the manufacturer, or for distribution into specific domestic destinations.

SECTION 16: OTHER INFORMATION

OTHER INFORMATION:

Distribution into Quebec to follow Canadian Controlled Product Regulations (CPR) 24(1) and 24(2).

Distribution into the EU to follow applicable Directives to the Use, Import/Export of the product as-sold.

Sources of Information:

International Agency for Research on Cancer (1987), *IARC Monographs on the Evaluation of Carcinogenic Risks to Humans: Overall Evaluations of Carcinogenicity: An updating of IARC Monographs Volumes 1-42, Supplement 7, Lyon, France.*

Ontario Ministry of Labour Regulation 654/86. Regulations Respecting Exposure to Chemical or Biological Agents.

RTECS – Registry of Toxic Effects of Chemical Substances, National Institute for Occupational Safety and Health.

MSDS/SDS PREPARATION INFORMATION:

DATE OF ISSUE: **30 April 2013**

SUPERCEDES: **16 December 2011**

DISCLAIMER:

This Material Safety Data Sheet is based upon information and sources available at the time of preparation or revision date. The information in the MSDS was obtained from sources which we believe are reliable, but are beyond our direct supervision or control. We make no Warranty of Merchantability, Fitness for any particular purpose or any other Warranty, Expressed or Implied, with respect to such information and we assume no liability resulting from its use. For this and other reasons, we do

MATERIAL SAFETY DATA SHEET
LEAD ACID BATTERY WET, FILLED WITH
ACID
(US, CN, EU Version for International Trade)

not assume responsibility and expressly disclaim liability for loss, damage or expense arising out of or in any way connected with the handling, storage, use or disposal of the product. It is the obligation of each user of this product to determine the suitability of this product and comply with the requirements of all applicable laws regarding use and disposal of this product. For additional information concerning East Penn Manufacturing Co., Inc. products or questions concerning the content of this MSDS please contact your East Penn representative.

END



SAFETY DATA SHEET

Issuing Date January 5, 2015

Revision Date June 12, 2015

Revision Number 1

1. IDENTIFICATION OF THE SUBSTANCE/PREPARATION AND OF THE COMPANY/UNDERTAKING

Product identifier

Product Name Clorox® Regular-Bleach₁

Other means of identification

EPA Registration Number 5813-100

Recommended use of the chemical and restrictions on use

Recommended use Household disinfecting, sanitizing, and laundry bleach

Uses advised against No information available

Details of the supplier of the safety data sheet

Supplier Address

The Clorox Company
1221 Broadway
Oakland, CA 94612

Phone: 1-510-271-7000

Emergency telephone number


Emergency Phone Numbers For Medical Emergencies, call: 1-800-446-1014
For Transportation Emergencies, call Chemtrec: 1-800-424-9300

2. HAZARDS IDENTIFICATION**Classification**

This chemical is considered hazardous by the 2012 OSHA Hazard Communication Standard (29 CFR 1910.1200).

Skin corrosion/irritation	Category 1
Serious eye damage/eye irritation	Category 1

GHS Label elements, including precautionary statements**Emergency Overview**

Signal word		Danger	
Hazard Statements			
Causes severe skin burns and eye damage			
Causes serious eye damage			
			
Appearance	Clear, pale yellow	Physical State	Thin liquid
		Odor	Bleach

Precautionary Statements - Prevention

Wash face, hands and any exposed skin thoroughly after handling.

Wear protective gloves, protective clothing, face protection, and eye protection such as safety glasses.

Precautionary Statements - Response

Immediately call a poison center or doctor.

If swallowed: Rinse mouth. Do NOT induce vomiting.

If on skin (or hair): Take off immediately all contaminated clothing. Rinse skin with water.

Wash contaminated clothing before reuse.

If inhaled: Remove person to fresh air and keep comfortable for breathing.

Specific treatment (see supplemental first aid instructions on this label).

If in eyes: Rinse cautiously with water for several minutes. Remove contact lenses, if present and easy to do. Continue rinsing.

Precautionary Statements - Storage

Store locked up.

Precautionary Statements - Disposal

Dispose of contents in accordance with all applicable federal, state, and local regulations.

Hazards not otherwise classified (HNOC)

Although not expected, heart conditions or chronic respiratory problems such as asthma, chronic bronchitis, or obstructive lung disease may be aggravated by exposure to high concentrations of vapor or mist.

Product contains a strong oxidizer. Always flush drains before and after use.

Unknown Toxicity

Not applicable.

Other information

Very toxic to aquatic life with long lasting effects.

Interactions with Other Chemicals

Reacts with other household chemicals such as toilet bowl cleaners, rust removers, acids, or products containing ammonia to produce hazardous irritating gases, such as chlorine and other chlorinated compounds.

3. COMPOSITION/INFORMATION ON INGREDIENTS

Chemical Name	CAS-No	Weight %	Trade Secret
Sodium hypochlorite	7681-52-9	5 - 10	*

* The exact percentage (concentration) of composition has been withheld as a trade secret.

4. FIRST AID MEASURES**First aid measures****General Advice**

Call a poison control center or doctor immediately for treatment advice. Show this safety data sheet to the doctor in attendance.

Eye Contact

Hold eye open and rinse slowly and gently with water for 15 - 20 minutes. Remove contact lenses, if present, after the first 5 minutes, then continue rinsing eye. Call a poison control center or doctor for treatment advice.

Skin Contact

Take off contaminated clothing. Rinse skin immediately with plenty of water for 15-20 minutes. Call a poison control center or doctor for treatment advice.

Inhalation

Move to fresh air. If breathing is affected, call a doctor.

Ingestion

Have person sip a glassful of water if able to swallow. Do not induce vomiting unless told to do so by a poison control center or doctor. Do not give anything by mouth to an unconscious person. Call a poison control center or doctor immediately for treatment advice.

Protection of First-aiders

Avoid contact with skin, eyes, and clothing. Use personal protective equipment as required. Wear personal protective clothing (see section 8).

Most important symptoms and effects, both acute and delayed**Most Important Symptoms and Effects**

Burning of eyes and skin.

Indication of any immediate medical attention and special treatment needed**Notes to Physician**

Treat symptomatically. Probable mucosal damage may contraindicate the use of gastric lavage.

5. FIRE-FIGHTING MEASURES

Suitable Extinguishing Media

Use extinguishing measures that are appropriate to local circumstances and the surrounding environment.

Unsuitable Extinguishing Media

CAUTION: Use of water spray when fighting fire may be inefficient.

Specific Hazards Arising from the Chemical

This product causes burns to eyes, skin, and mucous membranes. Thermal decomposition can release sodium chlorate and irritating gases and vapors.

Explosion Data

Sensitivity to Mechanical Impact None.

Sensitivity to Static Discharge None.

Protective equipment and precautions for firefighters

As in any fire, wear self-contained breathing apparatus pressure-demand, MSHA/NIOSH (approved or equivalent) and full protective gear.

6. ACCIDENTAL RELEASE MEASURES

Personal precautions, protective equipment and emergency procedures

Personal Precautions

Avoid contact with eyes, skin, and clothing. Ensure adequate ventilation. Use personal protective equipment as required. For spills of multiple products, responders should evaluate the MSDSs of the products for incompatibility with sodium hypochlorite. Breathing protection should be worn in enclosed and/or poorly-ventilated areas until hazard assessment is complete.

Other Information

Refer to protective measures listed in Sections 7 and 8.

Environmental precautions

Environmental Precautions

This product is toxic to fish, aquatic invertebrates, oysters, and shrimp. Do not allow product to enter storm drains, lakes, or streams. See Section 12 for ecological Information.

Methods and material for containment and cleaning up

Methods for Containment

Prevent further leakage or spillage if safe to do so.

Methods for Cleaning Up

Absorb and containerize. Wash residual down to sanitary sewer. Contact the sanitary treatment facility in advance to assure ability to process washed-down material.

7. HANDLING AND STORAGE

Precautions for safe handling

Handling Handle in accordance with good industrial hygiene and safety practice. Avoid contact with skin, eyes, and clothing. Do not eat, drink, or smoke when using this product.

Conditions for safe storage, including any incompatibilities

Storage Store away from children. Reclose cap tightly after each use. Store this product upright in a cool, dry area, away from direct sunlight and heat to avoid deterioration. Do not contaminate food or feed by storage of this product.

Incompatible Products Toilet bowl cleaners, rust removers, acids, and products containing ammonia.

8. EXPOSURE CONTROLS/PERSONAL PROTECTION

Control parameters

Exposure Guidelines

Chemical Name	ACGIH TLV	OSHA PEL	NIOSH IDLH
Sodium hypochlorite 7681-52-9	None	None	None

ACGIH TLV: American Conference of Governmental Industrial Hygienists - Threshold Limit Value. OSHA PEL: Occupational Safety and Health Administration - Permissible Exposure Limits. NIOSH IDLH: Immediately Dangerous to Life or Health.

Appropriate engineering controls

Engineering Measures Showers
Eyewash stations
Ventilation systems

Individual protection measures, such as personal protective equipment

Eye/Face Protection If splashes are likely to occur: Wear safety glasses with side shields (or goggles) or face shield.

Skin and Body Protection Wear rubber or neoprene gloves and protective clothing such as long-sleeved shirt.

Respiratory Protection If irritation is experienced, NIOSH/MSHA approved respiratory protection should be worn. Positive-pressure supplied air respirators may be required for high airborne contaminant concentrations. Respiratory protection must be provided in accordance with current local regulations.

Hygiene Measures Handle in accordance with good industrial hygiene and safety practice. Wash hands after direct contact. Do not wear product-contaminated clothing for prolonged periods. Remove and wash contaminated clothing before re-use. Do not eat, drink, or smoke when using this product.

9. PHYSICAL AND CHEMICAL PROPERTIES

Physical and Chemical Properties

Physical State	Thin liquid	Odor	Bleach
Appearance	Clear	Odor Threshold	No information available
Color	Pale yellow		

<u>Property</u>	<u>Values</u>	<u>Remarks/ Method</u>
pH	~12	None known
Melting/freezing point	No data available	None known
Boiling point / boiling range	No data available	None known
Flash Point	Not flammable	None known
Evaporation rate	No data available	None known
Flammability (solid, gas)	No data available	None known
Flammability Limits in Air		
Upper flammability limit	No data available	None known
Lower flammability limit	No data available	None known
Vapor pressure	No data available	None known
Vapor density	No data available	None known
Specific Gravity	~1.1	None known
Water Solubility	Soluble	None known
Solubility in other solvents	No data available	None known
Partition coefficient: n-octanol/water	No data available	None known
Autoignition temperature	No data available	None known
Decomposition temperature	No data available	None known
Kinematic viscosity	No data available	None known
Dynamic viscosity	No data available	None known
Explosive Properties	Not explosive	
Oxidizing Properties	No data available	

Other Information

Softening Point	No data available
VOC Content (%)	No data available
Particle Size	No data available
Particle Size Distribution	No data available

10. STABILITY AND REACTIVITY

Reactivity

Reacts with other household chemicals such as toilet bowl cleaners, rust removers, acids, or products containing ammonia to produce hazardous irritating gases, such as chlorine and other chlorinated compounds.

Chemical stability

Stable under recommended storage conditions.

Possibility of Hazardous Reactions

None under normal processing.

Conditions to avoid

None known based on information supplied.

Incompatible materials

Toilet bowl cleaners, rust removers, acids, and products containing ammonia.

Hazardous Decomposition Products

None known based on information supplied.

11. TOXICOLOGICAL INFORMATION

Information on likely routes of exposure

Product Information

Inhalation	Exposure to vapor or mist may irritate respiratory tract and cause coughing. Inhalation of high concentrations may cause pulmonary edema.
Eye Contact	Corrosive. May cause severe damage to eyes.
Skin Contact	May cause severe irritation to skin. Prolonged contact may cause burns to skin.
Ingestion	Ingestion may cause burns to gastrointestinal tract and respiratory tract, nausea, vomiting, and diarrhea.

Component Information

Chemical Name	LD50 Oral	LD50 Dermal	LC50 Inhalation
Sodium hypochlorite 7681-52-9	8200 mg/kg (Rat)	>10000 mg/kg (Rabbit)	-

Information on toxicological effects

Symptoms	May cause redness and tearing of the eyes. May cause burns to eyes. May cause redness or burns to skin. Inhalation may cause coughing.
-----------------	--

Delayed and immediate effects as well as chronic effects from short and long-term exposure

Sensitization	No information available.
Mutagenic Effects	No information available.
Carcinogenicity	The table below indicates whether each agency has listed any ingredient as a carcinogen.

Chemical Name	ACGIH	IARC	NTP	OSHA
Sodium hypochlorite 7681-52-9	-	Group 3	-	-

*IARC (International Agency for Research on Cancer)
Group 3 - Not Classifiable as to Carcinogenicity in Humans*

Reproductive Toxicity	No information available.
STOT - single exposure	No information available.
STOT - repeated exposure	No information available.
Chronic Toxicity	Carcinogenic potential is unknown.
Target Organ Effects	Respiratory system, eyes, skin, gastrointestinal tract (GI).
Aspiration Hazard	No information available.

Numerical measures of toxicity - Product Information

The following values are calculated based on chapter 3.1 of the GHS document

ATEmix (oral)

54 g/kg

ATEmix (inhalation-dust/mist)

58 mg/L

12. ECOLOGICAL INFORMATION**Ecotoxicity**

Very toxic to aquatic life with long lasting effects.

This product is toxic to fish, aquatic invertebrates, oysters, and shrimp. Do not allow product to enter storm drains, lakes, or streams.

Persistence and Degradability

No information available.

Bioaccumulation

No information available.

Other adverse effects

No information available.

13. DISPOSAL CONSIDERATIONS**Disposal methods**

Dispose of in accordance with all applicable federal, state, and local regulations. Do not contaminate food or feed by disposal of this product.

Contaminated Packaging

Do not reuse empty containers. Dispose of in accordance with all applicable federal, state, and local regulations.

14. TRANSPORT INFORMATION**DOT**

Not restricted.

TDG

Not restricted for road or rail.

ICAO

Not restricted, as per Special Provision A197, Environmentally Hazardous Substance exception.

IATA

Not restricted, as per Special Provision A197, Environmentally Hazardous Substance exception.

IMDG/IMO

Not restricted, as per IMDG Code 2.10.2.7, Marine Pollutant exception.

15. REGULATORY INFORMATION**Chemical Inventories**

TSCA All components of this product are either on the TSCA 8(b) Inventory or otherwise exempt from listing.

DSL/NDSL All components are on the DSL or NDSL.

TSCA - United States Toxic Substances Control Act Section 8(b) Inventory

DSL/NDSL - Canadian Domestic Substances List/Non-Domestic Substances List

U.S. Federal Regulations**SARA 313**

Section 313 of Title III of the Superfund Amendments and Reauthorization Act of 1986 (SARA). This product does not contain any chemicals which are subject to the reporting requirements of the Act and Title 40 of the Code of Federal Regulations, Part 372

SARA 311/312 Hazard Categories

Acute Health Hazard	Yes
Chronic Health Hazard	No
Fire Hazard	No
Sudden Release of Pressure Hazard	No
Reactive Hazard	No

Clean Water Act

This product contains the following substances which are regulated pollutants pursuant to the Clean Water Act (40 CFR 122.21 and 40 CFR 122.42)

Chemical Name	CWA - Reportable Quantities	CWA - Toxic Pollutants	CWA - Priority Pollutants	CWA - Hazardous Substances
Sodium hypochlorite 7681-52-9	100 lb			X

CERCLA

This material, as supplied, contains one or more substances regulated as a hazardous substance under the Comprehensive Environmental Response Compensation and Liability Act (CERCLA) (40 CFR 302)

Chemical Name	Hazardous Substances RQs	Extremely Hazardous Substances RQs	RQ
Sodium hypochlorite 7681-52-9	100 lb	-	RQ 100 lb final RQ RQ 45.4 kg final RQ

EPA Statement

This chemical is a pesticide product registered by the Environmental Protection Agency and is subject to certain labeling requirements under federal pesticide law. These requirements differ from the classification criteria and hazard information required for safety data sheets and for workplace labels of non-pesticide chemicals. Following is the hazard information as required on the pesticide label:

DANGER: CORROSIVE. Causes irreversible eye damage and skin burns. Harmful if swallowed. Do not get in eyes, on skin, or on clothing. Wear protective eyewear and rubber gloves when handling this product. Wash thoroughly with soap and water after handling and before eating, drinking, chewing gum, using tobacco, or using the restroom. Avoid breathing vapors and use only in a well-ventilated area.

US State Regulations**California Proposition 65**

This product does not contain any Proposition 65 chemicals.

U.S. State Right-to-Know Regulations

Chemical Name	New Jersey	Massachusetts	Pennsylvania	Rhode Island	Illinois
Sodium hypochlorite 7681-52-9	X	X	X	X	
Sodium chlorate 7775-09-9	X	X	X		

International Regulations**Canada****WHMIS Hazard Class**

E - Corrosive material

**16. OTHER INFORMATION**

NFPA Health Hazard 3 Flammability 0 Instability 0 Physical and Chemical Hazards -

HMIS Health Hazard 3 Flammability 0 Physical Hazard 0 Personal Protection B

Prepared By Product Stewardship
23 British American Blvd.
Latham, NY 12110
1-800-572-6501

Revision Date June 12, 2015

Revision Note Revision Section 14.

Reference 1096036/164964.159

General Disclaimer

The information provided in this Safety Data Sheet is correct to the best of our knowledge, information and belief at the date of its publication. The information given is designed only as a guidance for safe handling, use, processing, storage, transportation, disposal, and release and is not to be considered a warranty or quality specification. The information relates only to the specific material designated and may not be valid for such material used in combination with any other materials or in any process, unless specified in the text.

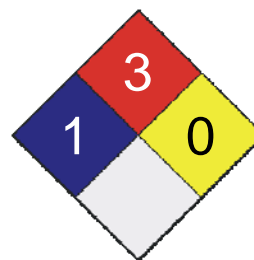
End of Safety Data Sheet

1. Product and Company Identification

Product Name LYSOL® Brand III Disinfectant Spray (all sizes, all scents)
CAS # Mixture
Product use Disinfectant
Distributed by Reckitt Benckiser
 Morris Corporate Center IV
 399 Interpace Parkway
 P.O. Box 225
 Parsippany, NJ 07054-0225
 In Case of Emergency: 1-800-338-6167
 Transportation Emergencies: 24 Hour Number:
 North America: CHEMTREC: 1-800-424-9300
 Outside North America: 1-703-527-3887

LEGEND HMIS/NFPA	
Severe	4
Serious	3
Moderate	2
Slight	1
Minimal	0

Health	* 1
Flammability	3
Physical Hazard	0
Personal Protection	B



2. Hazards Identification

Emergency overview

This product is regulated by the US EPA as a disinfectant.
 PRECAUTIONARY STATEMENTS: Hazards to humans and domestic animals.
 CAUTION
 Causes moderate eye irritation. Do not spray in eyes, on skin or on clothing. Wash thoroughly with soap and water after handling and before eating, drinking, chewing gum or using tobacco.
 PHYSICAL HAZARDS: FLAMMABLE
 Contents under pressure. Keep away from heat, sparks and open flame. Do not puncture or incinerate container. Exposure to temperatures above 130°F may cause bursting.

KEEP OUT OF REACH OF CHILDREN.

Potential short term health effects

Routes of exposure

Eye, Skin contact, Inhalation, Ingestion.

Eyes

Causes moderate eye irritation.

Skin

Moderately irritating to the skin.

Inhalation

None expected during normal conditions of use.
 However intentional misuse by deliberately concentrating and inhaling the contents may be harmful or fatal.

Ingestion

Contains denatured ethyl alcohol. May be harmful if swallowed.

Target organs

Blood. Liver. Respiratory system. Central nervous system. Heart.

Chronic effects

Prolonged or repeated exposure can cause drying, defatting and dermatitis.

Signs and symptoms

Symptoms may include redness, edema, drying, defatting and cracking of the skin.
 Symptoms of overexposure may be headache, dizziness, tiredness, nausea and vomiting.

OSHA Regulatory Status

This product is a "Hazardous Chemical" as defined by the OSHA Hazard Communication Standard, 29 CFR 1910.1200.

Potential environmental effects

Components of this product have been identified as having potential environmental concerns.

3. Composition / Information on Ingredients

Ingredient(s)	CAS #	Percent
Ethanol	64-17-5	40 - 60
Butane	106-97-8	2.5 - 10
Propane	74-98-6	1 - 2.5
Alkyl (40% C12, 50% C14, 10% C16) dimethyl benzyl ammonium saccharinate	Not Applicable	0 - 0.1

4. First Aid Measures

First aid procedures

Eye contact

Hold eye open and rinse slowly and gently with water for 15-20 minutes. Remove contact lenses, if present, after the first 5 minutes, then continue rinsing eye. Call a Poison Control Center or doctor for treatment advice.

Skin contact

Wash off immediately with soap and plenty of water for at least 15 minutes. All contaminated clothes and shoes are to be removed and washed before reuse. If symptoms persist, call a physician.

Inhalation

Move exposed person to fresh air. Get medical attention immediately.

Ingestion

If swallowed, call physician or Poison Control Centre immediately.

Notes to physician

Contains denatured ethanol; ingestion may result in ethanol poisoning. Symptoms may be delayed. Treat patient symptomatically.

General advice

Do not puncture or incinerate container. Keep away from sources of ignition. No smoking. If you feel unwell, seek medical advice (show the label where possible). Ensure that medical personnel are aware of the material(s) involved, and take precautions to protect themselves. Show this safety data sheet to the doctor in attendance. Avoid contact with eyes and skin. Keep out of reach of children.

NOTE TO PARENTS: Intentional misuse by deliberately concentrating and inhaling aerosol products may be harmful or fatal. Help stop inhalation abuse; for information visit www.inhalant.org.

5. Fire Fighting Measures

Flammable properties

Flammable aerosol by flame projection test.
Aerosol flame extension less than 18 inches (45 cm).
Containers may explode when heated.

NFPA AEROSOL LEVEL: Flammability Rating 1, per NFPA 30B

Extinguishing media

Suitable extinguishing media

Water spray. Dry chemical. Carbon dioxide.

Unsuitable extinguishing media

Not available

Protection of firefighters

Specific hazards arising from the chemical

Contents under pressure. Pressurized container may explode when exposed to heat or flame. Cool containers with flooding quantities of water until well after fire is out.

Protective equipment for firefighters

Firefighters should wear full protective clothing including self contained breathing apparatus.

Hazardous combustion products

May include and are not limited to: Oxides of carbon.

Explosion data

Sensitivity to mechanical impact

Not available

Sensitivity to static discharge

Not available.

6. Accidental Release Measures

Personal precautions

Keep unnecessary personnel away.
Do not touch or walk through spilled material.
Do not touch damaged containers or spilled material unless wearing appropriate protective clothing.
Keep people away from and upwind of spill/leak.

Environmental precautions

Prevent further leakage or spillage if safe to do so. Do not contaminate water.

Methods for containment	Eliminate all ignition sources (no smoking, flares, sparks, or flames in immediate area). Stop leak if you can do so without risk. Prevent entry into waterways, sewers, basements or confined areas.
Methods for cleaning up	Before attempting clean up, refer to hazard data given above. Remove sources of ignition. Although the chance of a significant spill or leak is unlikely in aerosol containers, in the event of such an occurrence, absorb spilled material with a non-flammable absorbent such as sand or vermiculite.

7. Handling and Storage

Handling	<p>Ensure adequate ventilation.</p> <p>Wear appropriate personal protective equipment when handling this product.</p> <p>Wash hands after handling and before eating.</p> <p>Avoid contact with eyes, skin and clothing.</p> <p>Do not ingest.</p> <p>Avoid breathing vapors or mists of this product.</p> <p>CONTENTS UNDER PRESSURE. DO NOT use in presence of open flame or spark. DO NOT puncture or incinerate container or store at temperatures over 50°C. DO NOT use on polished wood furniture, rayon fabrics, or acrylic plastics. Avoid contact with eyes and food. EXTREMELY FLAMMABLE</p> <p>Contents under pressure.</p> <p>Do not puncture or incinerate container.</p>
Storage	<p>Store in original container in areas inaccessible to small children.</p> <p>STORE IN A COOL PLACE AND AWAY FROM DIRECT SUNLIGHT.</p> <p>Keep away from heat, open flames or other sources of ignition.</p> <p>Do not reuse container.</p> <p>Do not puncture or incinerate container.</p> <p>NOTE TO PARENTS: Intentional misuse by deliberately concentrating and inhaling aerosol products may be harmful or fatal. Help stop inhalation abuse; for information visit www.inhalant.org.</p> <p>It is a violation of Federal law to use this product in a manner inconsistent with its labeling.</p>

8. Exposure Controls / Personal Protection

Exposure limits	
Ingredient(s)	Exposure Limits
Alkyl (40% C12, 50% C14, 10% C16) dimethyl benzyl ammonium saccharinate	<p>ACGIH-TLV</p> <p>Not established</p> <p>OSHA-PEL</p> <p>Not established</p>
Butane	<p>ACGIH-TLV</p> <p>TWA: 1000 ppm</p> <p>OSHA-PEL</p> <p>Not established</p>
Ethanol	<p>ACGIH-TLV</p> <p>TWA: 1000 ppm</p> <p>STEL: 1000 ppm</p> <p>OSHA-PEL</p> <p>TWA: 1000 ppm</p>
Propane	<p>ACGIH-TLV</p> <p>TWA: 1000 ppm</p> <p>OSHA-PEL</p> <p>TWA: 1000 ppm</p>
Engineering controls	Provide adequate ventilation.
Personal protective equipment	
Eye / face protection	<p>Avoid contact with eyes. tightly fitting safety goggles</p> <p>Emergency responders should wear full eye and face protection.</p>

Hand protection	Not normally required when used as directed. Avoid contact with the skin. Emergency responders should wear impermeable gloves.
Skin and body protection	As required by employer code.
Respiratory protection	Not normally required if good ventilation is maintained. Where exposure guideline levels may be exceeded, use an approved NIOSH respirator. Respirator should be selected by and used under the direction of a trained health and safety professional following requirements found in OSHA's respirator standard (29 CFR 1910.134), CAN/CSA-Z94.4 and ANSI's standard for respiratory protection (Z88.2). Emergency responders should wear self-contained breathing apparatus (SCBA) to avoid inhalation of vapours generated by this product during a spill or other clean-up operations.
General hygiene considerations	Handle in accordance with good industrial hygiene and safety practice. When using do not eat or drink. Washing with soap and water after use is recommended as good hygienic practice to prevent possible eye irritation from hand contact.

9. Physical and Chemical Properties

Appearance	Misty spray
Color	Clear
Form	Aerosol
Odor	Characteristic
Odor threshold	Not available
Physical state	Gas
pH	10.8 - 11.8
Freezing point	Not available
Boiling point	Not available
Pour point	Not available
Evaporation rate	Not available
Flash point	78.08 °F (25.6 °C)
Auto-ignition temperature	Not available
Flammability limits in air, lower, % by volume	Not available
Flammability limits in air, upper, % by volume	Not available
Vapor pressure	Not available
Vapor density	Not available
Specific gravity	0.882 @ 25°C (Concentrate)
Octanol/water coefficient	Not available
Solubility (H2O)	Complete
VOC (Weight %)	Not available
Viscosity	Not available
Percent volatile	Not available

10. Stability and Reactivity

Reactivity	This product may react with strong oxidizing agents.
Possibility of hazardous reactions	Hazardous polymerization does not occur.
Chemical stability	Stable under recommended storage conditions.
Conditions to avoid	Heat, open flames, static discharge, sparks and other ignition sources. Aerosol containers are unstable at temperatures above 49°C (120.2°F). Do not freeze. Exposure to moisture.
Incompatible materials	Oxidizers.
Hazardous decomposition products	May include and are not limited to: Oxides of carbon.

11. Toxicological Information

Component analysis - LC50

Ingredient(s)	LC50
Alkyl (40% C12, 50% C14, 10% C16) dimethyl benzyl ammonium saccharinate	Not available
Butane	Not available
Ethanol	31623 ppm rat
Propane	Not available

Component analysis - Oral LD50

Ingredient(s)	LD50
Alkyl (40% C12, 50% C14, 10% C16) dimethyl benzyl ammonium saccharinate	Not available
Butane	Not available
Ethanol	3450 mg/kg mouse; 7060 mg/kg rat
Propane	Not available

Effects of acute exposure

Eye	Causes moderate eye irritation.
Skin	Moderately irritating to the skin.
Inhalation	None expected during normal conditions of use. However intentional misuse by deliberately concentrating and inhaling the contents may be harmful or fatal.
Ingestion	Contains denatured ethyl alcohol. May be harmful if swallowed.
Sensitization	The finished product is not expected to have chronic health effects.
Chronic effects	The finished product is not expected to have chronic health effects.
Carcinogenicity	The finished product is not expected to have chronic health effects.

ACGIH - Threshold Limit Values - Carcinogens

Ethanol	64-17-5	A3 - Confirmed Animal Carcinogen with Unknown Relevance to Humans
---------	---------	---

Mutagenicity	The finished product is not expected to have chronic health effects.
Reproductive effects	The finished product is not expected to have chronic health effects.
Teratogenicity	The finished product is not expected to have chronic health effects.
Name of Toxicologically Synergistic Products	Not available

12. Ecological Information

Ecotoxicity	Components of this product have been identified as having potential environmental concerns.	
Ecotoxicity - Freshwater Fish - Acute Toxicity Data		
Ethanol	64-17-5	96 Hr LC50 Oncorhynchus mykiss: 12.0 - 16.0 mL/L [static]; 96 Hr LC50 Pimephales promelas: >100 mg/L [static]; 96 Hr LC50 Pimephales promelas: 13400 - 15100 mg/L [flow-through]
Ecotoxicity - Water Flea - Acute Toxicity Data		
Ethanol	64-17-5	48 Hr LC50 Daphnia magna: 9268 - 14221 mg/L; 24 Hr EC50 Daphnia magna: 10800 mg/L; 48 Hr EC50 Daphnia magna: 2 mg/L [Static]
Persistence / degradability	Not available	
Bioaccumulation / accumulation	Not available	
Mobility in environmental media	Not available	
Environmental effects	Not available	
Aquatic toxicity	Not available	
Partition coefficient	Not available	
Chemical fate information	Not available	

13. Disposal Considerations

Disposal instructions	Dispose in accordance with all applicable regulations. Discard in trash or offer for recycling if available.
Waste from residues / unused products	Not available
Contaminated packaging	Not available

14. Transport Information

U.S. Department of Transportation (DOT)

UN1950, Aerosols, flammable, Class 2.1 Re-Classed as Limited Quantity

Transportation of Dangerous Goods (TDG - Canada)

UN1950, Aerosols, flammable, Class 2.1 Re-Classed as Limited Quantity

IMDG (Marine Transport)

UN 1950, Aerosols, flammable, Class 2.1

UN 1950, Aerosols, Flammable, Limited Quantity or

Consumer Commodity, ID 8000 if acceptable to airline.

15. Regulatory Information

Occupational Safety and Health Administration (OSHA)

29 CFR 1910.1200 hazardous chemical Yes

US Federal regulations

This product is a "Hazardous Chemical" as defined by the OSHA Hazard Communication Standard, 29 CFR 1910.1200.

Product Registration: Registered with EPA, EPA Reg. No. 777-99

Superfund Amendments and Reauthorization Act of 1986 (SARA)

Hazard categories Immediate Hazard - Yes
Delayed Hazard - Yes
Fire Hazard - Yes
Pressure Hazard - Yes
Reactivity Hazard - No

Section 302 extremely hazardous substance No

Section 311 hazardous chemical Yes

Clean Air Act (CAA) Not available

Clean Water Act (CWA) Not available

State regulations

See below

U.S. - California - 8 CCR Section 339 - Director's List of Hazardous Substances

Butane	106-97-8	Present
--------	----------	---------

U.S. - Massachusetts - Right To Know List

Butane	106-97-8	Present
Ethanol	64-17-5	Teratogen
Propane	74-98-6	Present

U.S. - Minnesota - Hazardous Substance List

Butane	106-97-8	Present
Ethanol	64-17-5	Present
Propane	74-98-6	Simple asphyxiant

U.S. - New Jersey - Right to Know Hazardous Substance List

Butane	106-97-8	sn 0273
Ethanol	64-17-5	sn 0844
Propane	74-98-6	sn 1594

U.S. - Pennsylvania - RTK (Right to Know) List

Butane	106-97-8	Present
Ethanol	64-17-5	Present
Propane	74-98-6	Present

U.S. - Rhode Island - Hazardous Substance List

Butane	106-97-8	Toxic; Flammable
Ethanol	64-17-5	Toxic; Flammable
Propane	74-98-6	Toxic; Flammable

Inventory status

Country(s) or region	Inventory name	On inventory (yes/no)*
United States & Puerto Rico	Toxic Substances Control Act (TSCA) Inventory	Yes

A "Yes" indicates that all components of this product comply with the inventory requirements administered by the governing country(s)

16. Other Information

Disclaimer

This product should only be used as directed on the label and for the purpose intended. To the best of our knowledge, the information contained herein is accurate. However, neither the above named supplier nor any of its subsidiaries assumes any liability whatsoever for the accuracy or completeness of the information contained herein. Final determination of suitability of any material is the sole responsibility of the user. All materials may present unknown hazards and should be used with caution. Although certain hazards are described herein, we cannot guarantee that these are the only hazards that exist.

Further information

LYSOL® Brand III Disinfectant Spray - Crisp Linen - 6 oz, 12.5 oz, 19 oz, 350g - 0242193 v 1.0

LYSOL® Brand III Disinfectant Spray - "To Go" Crisp Linen - 1 oz, 28 g - 0242193 v 1.0

LYSOL® Brand III Disinfectant Spray - Spring Waterfall - 12.5 oz, 19 oz, 350g - 0258756 v 1.0

LYSOL® Brand III Disinfectant Spray - Crisp Berry - 12.5 oz, 19 oz, 350g - 0175938 v 1.0

LYSOL® Brand III Disinfectant Spray - Early Morning Breeze - 12.5 oz, 19 oz - 0175929 v 1.0

LYSOL® Brand III Disinfectant Spray - Garden Mist - 12.5 oz, 19 oz - 0175932 v 1.0

LYSOL® Brand III Disinfectant Spray - For Baby's Room - 12.5 oz, 19 oz - 01759232 v 1.0

LYSOL® Brand III Disinfectant Spray - Summer Breeze - 12.5 oz, 19 oz - 0175935 v 1.0

LYSOL® Brand III Disinfectant Spray - Citrus Meadows - 12.5 oz, 19 oz - 0175926 v 1.0

LYSOL® Brand III Disinfectant Spray - Vanilla & Blossoms - 12.5 oz, 19 oz - 0175943 v 1.0

LYSOL® Brand III Disinfectant Spray - Jasmine & Rain - 12.5 oz, 19 oz - 0175920 v 1.0

Issue date

17-May-2012

Effective date

15-Mar-2012

Prepared by

Reckitt Benckiser Regulatory Department 800-333-3899

Other information

For an updated MSDS, please contact the supplier/manufacturer listed on the first page of the document.

**PURELL® Instant Hand Sanitizer**

Version 1.0

SDS Number: 400000000469

Revision Date: 01/31/2017

SECTION 1. PRODUCT AND COMPANY IDENTIFICATION

Product name : PURELL® Instant Hand Sanitizer

Manufacturer or supplier's details

Company name of supplier : GOJO Industries, Inc.

Address : One GOJO Plaza, Suite 500
Akron, Ohio 44311

Telephone : 1 (330) 255-6000

Emergency telephone number : 1-800-424-9300 CHEMTREC

Recommended use of the chemical and restrictions on use

Recommended use : Hand Sanitizer

Restrictions on use : This is a personal care or cosmetic product that is safe for consumers and other users under normal and reasonably foreseeable use. Cosmetics and consumer products, specifically defined by regulations around the world, are exempt from the requirement of an SDS for the consumer. While this material is not considered hazardous, this SDS contains valuable information critical to the safe handling and proper use of the product for industrial workplace conditions as well as unusual and unintended exposures such as large spills. This SDS should be retained and available for employees and other users of this product. For specific intended-use guidance, please refer to the information provided on the package or instruction sheet.

Prepared by :

SECTION 2. HAZARDS IDENTIFICATION**Emergency Overview**

Physical state	liquid
Colour	clear, colourless, light yellow
Odour	citrus

GHS Classification

Flammable liquids : Category 3

Eye irritation : Category 2A

GHS label elements

PURELL® Instant Hand Sanitizer

Version 1.0

SDS Number: 400000000469

Revision Date: 01/31/2017

Hazard pictograms

:



Signal word

: Warning

Hazard statements

: H226 Flammable liquid and vapour.
H319 Causes serious eye irritation.

Precautionary statements

: **Prevention:**

P210 Keep away from heat, hot surfaces, sparks, open flames and other ignition sources. No smoking.

P233 Keep container tightly closed.

P240 Ground/bond container and receiving equipment.

P241 Use explosion-proof electrical/ ventilating/ lighting/ equipment.

P242 Use only non-sparking tools.

P243 Take precautionary measures against static discharge.

P280 Wear eye protection/ face protection.

Response:

P305 + P351 + P338 IF IN EYES: Rinse cautiously with water for several minutes. Remove contact lenses, if present and easy to do. Continue rinsing.

P337 + P313 If eye irritation persists: Get medical advice/ attention.

P370 + P378 In case of fire: Use dry sand, dry chemical or alcohol-resistant foam to extinguish.

Storage:

P403 + P235 Store in a well-ventilated place. Keep cool.

Disposal:

P501 Dispose of contents/ container to an approved waste disposal plant.

Potential Health Effects

Primary Routes of Entry

: Inhalation
Eye contact
Skin contact

Aggravated Medical Condition

: None known.

Carcinogenicity:**IARC**

No component of this product present at levels greater than or equal to 0.1% is identified as probable, possible or confirmed human carcinogen by IARC.

SECTION 3. COMPOSITION/INFORMATION ON INGREDIENTS**Hazardous components**

Chemical name	CAS-No.	Concentration (%)
Ethyl Alcohol	64-17-5	>= 50 - < 70

**PURELL® Instant Hand Sanitizer**

Version 1.0

SDS Number: 400000000469

Revision Date: 01/31/2017

Isopropyl Alcohol

67-63-0

>= 1 - < 5

SECTION 4. FIRST AID MEASURES

- | | |
|---|--|
| General advice | : In the case of accident or if you feel unwell, seek medical advice immediately.
When symptoms persist or in all cases of doubt seek medical advice. |
| If inhaled | : If inhaled, remove to fresh air.
If symptoms persist, call a physician. |
| In case of skin contact | : Wash with water and soap as a precaution.
Get medical attention if irritation develops and persists. |
| In case of eye contact | : In case of contact, immediately flush eyes with plenty of water for at least 15 minutes.
If easy to do, remove contact lens, if worn.
Seek medical advice. |
| If swallowed | : If swallowed, DO NOT induce vomiting.
Rinse mouth with water.
Obtain medical attention. |
| Most important symptoms and effects, both acute and delayed | : Causes serious eye irritation. |
| Protection of first-aiders | : First Aid responders should pay attention to self-protection and use the recommended protective clothing |

SECTION 5. FIREFIGHTING MEASURES

- | | |
|--------------------------------------|---|
| Suitable extinguishing media | : Use water spray, alcohol-resistant foam, dry chemical or carbon dioxide. |
| Unsuitable extinguishing media | : High volume water jet |
| Specific hazards during firefighting | : Do not use a solid water stream as it may scatter and spread fire.
Flash back possible over considerable distance.
May form explosive mixtures in air.
Carbon oxides |
| Hazardous combustion products | : Carbon oxides |
| Specific extinguishing methods | : Use extinguishing measures that are appropriate to local circumstances and the surrounding environment.
Use water spray to cool unopened containers. |
| Further information | : Collect contaminated fire extinguishing water separately. This must not be discharged into drains. |


PURELL® Instant Hand Sanitizer

Version 1.0

SDS Number: 400000000469

Revision Date: 01/31/2017

Fire residues and contaminated fire extinguishing water must be disposed of in accordance with local regulations.

Special protective equipment for firefighters : In the event of fire, wear self-contained breathing apparatus.
Use personal protective equipment.

SECTION 6. ACCIDENTAL RELEASE MEASURES

Personal precautions, protective equipment and emergency procedures : Use personal protective equipment.
Ensure adequate ventilation.
Remove all sources of ignition.
Evacuate personnel to safe areas.
Keep people away from and upwind of spill/leak.
Material can create slippery conditions.

Environmental precautions : Discharge into the environment must be avoided.
Prevent further leakage or spillage if safe to do so.
Retain and dispose of contaminated wash water.
Local authorities should be advised if significant spillages cannot be contained.

Methods and materials for containment and cleaning up : Non-sparking tools should be used.
Soak up with inert absorbent material.
Suppress (knock down) gases/vapours/mists with a water spray jet.
Keep in suitable, closed containers for disposal.
Clean contaminated floors and objects thoroughly while observing environmental regulations.

SECTION 7. HANDLING AND STORAGE

Advice on safe handling : For personal protection see section 8.
Keep away from heat.
Use with local exhaust ventilation.
Avoid contact with eyes.

Conditions for safe storage : Take measures to prevent the build up of electrostatic charge.
Keep in properly labelled containers.
Keep containers tightly closed in a dry, cool and well-ventilated place.
Store in accordance with the particular national regulations.

SECTION 8. EXPOSURE CONTROLS/PERSONAL PROTECTION
Components with workplace control parameters

Components	CAS-No.	Value type (Form of exposure)	Control parameters / Permissible concentration	Basis
Ethyl Alcohol	64-17-5	TWA	1,000 ppm 1,880 mg/m ³	CA AB OEL
		STEL	1,000 ppm	CA BC OEL


PURELL® Instant Hand Sanitizer

Version 1.0

SDS Number: 400000000469

Revision Date: 01/31/2017

		TWAEV	1,000 ppm 1,880 mg/m ³	CA QC OEL
		STEL	1,000 ppm	ACGIH
Isopropyl Alcohol	67-63-0	TWA	200 ppm 492 mg/m ³	CA AB OEL
		STEL	400 ppm 984 mg/m ³	CA AB OEL
		TWA	200 ppm	CA BC OEL
		STEL	400 ppm	CA BC OEL
		TWAEV	400 ppm 983 mg/m ³	CA QC OEL
		STEV	500 ppm 1,230 mg/m ³	CA QC OEL
		TWA	200 ppm	ACGIH
		STEL	400 ppm	ACGIH

Biological occupational exposure limits

Components	CAS-No.	Control parameters	Biological specimen	Sampling time	Permissible concentration	Basis
Isopropyl Alcohol	67-63-0	Acetone	Urine	End of shift at end of workweek	40 mg/l	ACGIH BEI

Personal protective equipment

Respiratory protection : No personal respiratory protective equipment normally required.

Hand protection
Remarks : No special protective equipment required.

Eye protection : Wear face-shield and protective suit for abnormal processing problems.

Skin and body protection : No special measures necessary provided product is used correctly.

Protective measures : Choose body protection in relation to its type, to the concentration and amount of dangerous substances, and to the specific work-place.
Ensure that eye flushing systems and safety showers are located close to the working place.

Hygiene measures : Handle in accordance with good industrial hygiene and safety practice.
Avoid contact with eyes.

SECTION 9. PHYSICAL AND CHEMICAL PROPERTIES

Appearance : liquid

Colour : clear, colourless, light yellow

**PURELL® Instant Hand Sanitizer**

Version 1.0

SDS Number: 400000000469

Revision Date: 01/31/2017

Odour	: citrus
Odour Threshold	: No data available
pH	: 6.0 - 9.2, (20 °C)
Melting point/freezing point	: No data available
Initial boiling point and boiling range	: No data available
Flash point	: 25.00 °C
Evaporation rate	: No data available
Flammability (solid, gas)	: Not applicable
Upper explosion limit	: No data available
Lower explosion limit	: No data available
Vapour pressure	: No data available
Relative vapour density	: No data available
Density	: 0.8933 g/cm ³
Solubility(ies) Water solubility	: soluble
Partition coefficient: n-octanol/water	: Not applicable
Auto-ignition temperature	: No data available
Thermal decomposition	: The substance or mixture is not classified self-reactive.
Viscosity Viscosity, kinematic	: 1000 - 35000 mm ² /s (20 °C)
Explosive properties	: Not explosive
Oxidizing properties	: The substance or mixture is not classified as oxidizing.

SECTION 10. STABILITY AND REACTIVITY

Reactivity	: Not classified as a reactivity hazard.
Chemical stability	: Stable under normal conditions.
Possibility of hazardous reactions	: Vapours may form explosive mixture with air.
Conditions to avoid	: Heat, flames and sparks.

**PURELL® Instant Hand Sanitizer**

Version 1.0

SDS Number: 400000000469

Revision Date: 01/31/2017

Incompatible materials : Strong oxidizing agents
Flammable solids
Self-reactive substances and mixtures
Water-reactive substances

SECTION 11. TOXICOLOGICAL INFORMATION

Information on likely routes of exposure : Inhalation
Eye contact
Skin contact

Acute toxicity

Not classified based on available information.

Components:**Ethyl Alcohol:**

Acute oral toxicity : LD50 (Rat): > 5,000 mg/kg

Acute inhalation toxicity : LC50 (Rat): 124.7 mg/l
Exposure time: 4 h
Test atmosphere: vapour

Isopropyl Alcohol:

Acute oral toxicity : LD50 (Rat): > 5,000 mg/kg

Acute inhalation toxicity : LC50 (Rat): 72.6 mg/l
Exposure time: 4 h
Test atmosphere: vapour

Acute dermal toxicity : LD50 (Rat): > 5,000 mg/kg

Skin corrosion/irritation

Not classified based on available information.

Components:**Ethyl Alcohol:**

Species: Rabbit
Method: OECD Test Guideline 404
Result: No skin irritation

Isopropyl Alcohol:

Species: Rabbit
Result: No skin irritation

Serious eye damage/eye irritation

Causes serious eye irritation.

Components:**Ethyl Alcohol:**

Species: Rabbit
Result: Irritation to eyes, reversing within 21 days
Method: OECD Test Guideline 405

**PURELL® Instant Hand Sanitizer**

Version 1.0

SDS Number: 400000000469

Revision Date: 01/31/2017

Isopropyl Alcohol:

Species: Rabbit

Result: Irritation to eyes, reversing within 21 days

Respiratory or skin sensitisation

Skin sensitisation: Not classified based on available information.

Respiratory sensitisation: Not classified based on available information.

Components:**Ethyl Alcohol:**

Test Type: Local lymph node assay (LLNA)

Exposure routes: Skin contact

Species: Mouse

Result: negative

Isopropyl Alcohol:

Test Type: Buehler Test

Exposure routes: Skin contact

Species: Guinea pig

Method: OECD Test Guideline 406

Result: negative

Germ cell mutagenicity

Not classified based on available information.

Components:**Ethyl Alcohol:**

Genotoxicity in vitro : Test Type: In vitro mammalian cell gene mutation test
Result: negative

Genotoxicity in vivo : Test Type: Rodent dominant lethal test (germ cell) (in vivo)
Test species: Mouse
Application Route: Ingestion
Result: negative

Isopropyl Alcohol:

Genotoxicity in vitro : Test Type: Bacterial reverse mutation assay (AMES)
Result: negative

Genotoxicity in vivo : Test Type: Mammalian erythrocyte micronucleus test (in vivo
cytogenetic assay)
Test species: Mouse
Application Route: Intraperitoneal injection
Result: negative

Carcinogenicity

Not classified based on available information.

Components:**Isopropyl Alcohol:**

Species: Rat

Application Route: inhalation (vapour)

Exposure time: 104 weeks

Method: OECD Test Guideline 451

Result: negative

**PURELL® Instant Hand Sanitizer**

Version 1.0

SDS Number: 400000000469

Revision Date: 01/31/2017

Reproductive toxicity

Not classified based on available information.

Components:**Ethyl Alcohol:**

Effects on fertility

: Test Type: Two-generation reproduction toxicity study
Species: Mouse
Application Route: Ingestion
Method: OECD Test Guideline 416
Result: negative

Isopropyl Alcohol:

Effects on fertility

: Test Type: Two-generation reproduction toxicity study
Species: Rat
Application Route: Ingestion
Result: negative

Effects on foetal development

: Test Type: Embryo-foetal development
Species: Rat
Application Route: Ingestion
Result: negative

STOT - single exposure

Not classified based on available information.

Components:**Isopropyl Alcohol:**

Assessment: May cause drowsiness or dizziness.

STOT - repeated exposure

Not classified based on available information.

Repeated dose toxicity**Components:****Ethyl Alcohol:**

Species: Rat
NOAEL: 2,400 mg/kg
Application Route: Ingestion
Exposure time: 2 y

Isopropyl Alcohol:

Species: Rat
NOAEL: 5000 ppm
Application Route: inhalation (vapour)
Exposure time: 104 w
Method: OECD Test Guideline 413

Aspiration toxicity

Not classified based on available information.

**PURELL® Instant Hand Sanitizer**

Version 1.0

SDS Number: 400000000469

Revision Date: 01/31/2017

SECTION 12. ECOLOGICAL INFORMATION**Ecotoxicity****Components:****Ethyl Alcohol:**

Toxicity to fish : LC50 (Pimephales promelas (fathead minnow)): > 1,000 mg/l
Exposure time: 96 h

Toxicity to daphnia and other : EC50 (Daphnia magna (Water flea)): > 1,000 mg/l
aquatic invertebrates Exposure time: 48 h

Toxicity to algae : EC50 (Chlorella vulgaris (Fresh water algae)): 275 mg/l
Exposure time: 72 h
Method: OECD Test Guideline 201

Toxicity to daphnia and other : NOEC (Daphnia magna (Water flea)): 9.6 mg/l
aquatic invertebrates Exposure time: 9 d
(Chronic toxicity)

Toxicity to bacteria : EC50 (Photobacterium phosphoreum): 32.1 mg/l
Exposure time: 0.25 h

Isopropyl Alcohol:

Toxicity to fish : LC50 (Pimephales promelas (fathead minnow)): 10,000 mg/l
Exposure time: 96 h

Toxicity to daphnia and other : EC50 (Daphnia magna (Water flea)): > 10,000 mg/l
aquatic invertebrates Exposure time: 24 h

Toxicity to bacteria : EC50 (Pseudomonas putida): > 1,050 mg/l
Exposure time: 16 h

Persistence and degradability**Components:****Ethyl Alcohol:**

Biodegradability : Result: Readily biodegradable.
Biodegradation: 84 %
Exposure time: 20 d

Isopropyl Alcohol:

Biodegradability : Result: rapidly degradable

Bioaccumulative potential**Components:****Ethyl Alcohol:**

Partition coefficient: n- : log Pow: -0.35
octanol/water

Isopropyl Alcohol:

Partition coefficient: n- : log Pow: 0.05
octanol/water

**PURELL® Instant Hand Sanitizer**

Version 1.0

SDS Number: 400000000469

Revision Date: 01/31/2017

Mobility in soil

No data available

Other adverse effects

No data available

SECTION 13. DISPOSAL CONSIDERATIONS**Disposal methods**

- Waste from residues : Dispose of in accordance with local regulations.
- Contaminated packaging : Dispose of as unused product.
Empty containers should be taken to an approved waste handling site for recycling or disposal.

SECTION 14. TRANSPORT INFORMATION**International Regulation****IATA-DGR**

- UN/ID No. : UN 1987
- Proper shipping name : Alcohols, n.o.s.
(Ethanol, Propan-2-ol)
- Class : 3
- Packing group : III
- Packing instruction (cargo aircraft) : 366
- Packing instruction (passenger aircraft) : 355

IMDG-Code

- UN number : UN 1987
- Proper shipping name : ALCOHOLS, N.O.S.
(Ethanol, Propan-2-ol)
- Class : 3
- Packing group : III
- Labels : 3
- EmS Code : F-E, S-D
- Marine pollutant : no

National Regulations**TDG**

- UN number : UN 1987
- Proper shipping name : ALCOHOLS, N.O.S.
(Ethanol, Propan-2-ol)
- Class : 3
- Packing group : III
- Labels : 3
- ERG Code : 127
- Marine pollutant : no

SECTION 15. REGULATORY INFORMATION

**PURELL® Instant Hand Sanitizer**

Version 1.0

SDS Number: 400000000469

Revision Date: 01/31/2017

WHMIS Classification : B2: Flammable liquid
D2B: Toxic Material Causing Other Toxic Effects

This product has been classified according to the hazard criteria of the CPR and the MSDS contains all of the information required by the CPR.

The components of this product are reported in the following inventories:

TSCA : On TSCA Inventory

AICS : On the inventory, or in compliance with the inventory

DSL : On the inventory, or in compliance with the inventory

ENCS : On the inventory, or in compliance with the inventory

ISHL : On the inventory, or in compliance with the inventory

KECI : On the inventory, or in compliance with the inventory

PICCS : On the inventory, or in compliance with the inventory

IECSC : On the inventory, or in compliance with the inventory

NZIoC : On the inventory, or in compliance with the inventory

Inventories

AICS (Australia), DSL (Canada), IECSC (China), REACH (European Union), ENCS (Japan), ISHL (Japan), KECI (Korea), NZIoC (New Zealand), PICCS (Philippines), TCSI (Taiwan), TSCA (USA)

SECTION 16. OTHER INFORMATION

The information provided in this Safety Data Sheet is correct to the best of our knowledge, information and belief at the date of its publication. The information given is designed only as a guidance for safe handling, use, processing, storage, transportation, disposal and release and is not to be considered a warranty or quality specification. The information relates only to the specific material designated and may not be valid for such material used in combination with any other materials or in any process, unless specified in the text.

550RD 550X POLYMER

DESCRIPTION

550RD/550X is a highly dispersible, slightly anionic, dry synthetic polymer that minimizes fisheyes when mixing allowing for more consistent yields and less waste in minimal shear environments. Requires minimal shearing to yield very consistently and quickly compared to semi synthetic or natural polymers.

PRIMARY FUNCTIONS

- High viscosity for cuttings transport with minimal product usage
- Nontoxic for use in environmentally sensitive applications

SECONDARY FUNCTIONS

These functions serve as supplemental benefits of this products use when mixed accordingly.

- Reduced torque and tubular wear compared to straight water applications
- Increased rate of penetration in directional and horizontal wells
- Reduction in storage on site, volume of supplies and transport costs over liquid product
- Shale and clay encapsulation that reduces swelling and increases well bore stability

MIXING

550RD 550X can be mixed readily in fresh water. Sprinkle slowly onto agitated, turbulent water. Hydration is almost immediate. 1-1.5 kg/m³ is generally sufficient for normal vertical drilling applications. In unconsolidated or broken formations that are prone to sloughing or in water reactive clay or shale the concentration should be increased to 1.5-2.5kg/m³. This product is sensitive to high salinity, if mixing in salt water contact Di-Corp rep for specialized instruction.

ENVIRONMENT

Dangerous components: None

Potentially dangerous impurities: None

Physical properties: White solid at 20 Degrees C

Measures to be taken after leakage or accidental spilling: Wash abundantly with water and bleach

Inflammability or danger of explosion: None

Poisonous properties: Non-toxic, slightly basic

First Aid measures: Wash with water

PACKAGING

20 kg. High impact plastic pail with handle.

MATERIAL SAFETY DATA SHEET



102-17910, 55 Ave, Surrey, BC, Canada V3S 6C8 • Toll Free 1-866-535-6699

Tel: 604-575-6660 Fax: 604-575-5494 e-mail: extreme.ron@telus.net

EXTREME ALKAMER

EMERGENCY PHONE NO. (604) 575-6660

PAGE 1 OF 5

WHMIS HAZARD INDEX:

DEGREE OF HAZARD:

HEALTH 1
FIRE 1
REACTIVITY 0
OTHER: B (GLASSES & GLOVES)

HAZARD RATING:

0 LEAST
1 SLIGHT
2 MODERATE
3 HIGH
4 EXTREME

SECTION 1

PRODUCT IDENTIFICATION

PRODUCT NAME: EXTREME ALKAMER
CHEMICAL IDENTIFICATION: Anionic copolymer of acrylamide, and acrylate emulsion
MATERIAL USE: Viscosifier, clay inhibitor
WHMIS CLASSIFICATION: Class D-2(B)
WORK PLACE HAZARD: Skin, eye irritant

TRANSPORTATION OF DANGEROUS GOODS (TDGR)

CLASSIFICATION: Not dangerous goods
PACKAGE GROUP: Not applicable
CAS NUMBER: 25085-02-3
MSDS CODE: Not available

SECTION 2

HAZARDOUS INGREDIENTS

INGREDIENT:	MINERAL SPIRITS	ALKYL PHENOL ETHOXYLATE
PERCENTAGE:	20 -40	3 - 7
CAS NUMBER:	64742-47-8	9016-45-9
LD (50):	6480 Mg/Kg.	3000 Mg/Kg.
LC (50):	Not available	Not determined

EXTREME ALKAMER

MATERIAL SAFETY DATA SHEET**SECTION 3****PHYSICAL DATA**

APPEARANCE AND ODOUR:	Off white liquid, mild odour
DENSITY (SPECIFIC GRAVITY):	Less than 1.0
BOILING POINT:	290°C
MELTING POINT:	Not applicable
SOLUBILITY:	Soluble
EVAPORATION RATE: (EE=1):	Not available
VAPOUR PRESSURE: (MM HG):	Not available
VAPOUR DENSITY: (AIR = 1):	Not available

SECTION 4**FIRE AND EXPLOSION**

FLASHPOINT:	> 200°C
FLAMMABLE LIMIT:	Not available
AUTO IGNITION TEMP:	No data
EXTINGUISHING MEDIA:	Dry chemical, carbon dioxide, foam, water spray, water will cause extreme slipperiness
SPECIAL FIRE FIGHTING PROCEDURES:	Self-contained respirators for fire fighting personnel.
UNUSUAL FIRE AND EXPLOSION HAZARDS:	Sensitivity to static charge.

SECTION 5**REACTIVITY DATA**

STABILITY (THERMAL, LIGHT, ETC.):	Stable
INCOMPATIBILITY (CONDITIONS TO AVOID):	Strong oxidizing and reducing agents
HAZARDOUS POLYMERIZATION:	Will not occur
HAZARDOUS DECOMPOSITION PRODUCTS:	Not available

EXTREME ALKAMER

MATERIAL SAFETY DATA SHEET

SECTION 6**HEALTH HAZARDS**

ROUTE OF ENTRY:

(X) SKIN

(X) EYE CONTACT

() INHALATION

(X) INGESTION

SKIN CONTACT:

May be minimally irritating to sensitive skin upon direct contact.

EYE CONTACT:

May cause stinging, burning of eyes and lids, inflammation and discomfort.

INHALATION:

Not available.

INGESTION:

May cause nausea, vomiting.

SECTION 7**PREVENTATIVE MEASURES**

SKIN PROTECTION:

Impervious gloves, protective clothing as required

EYE PROTECTION:

Chemical goggles.

VENTILATION:

None required for normal use. 10 changes per hour.

RESPIRATORY PROTECTION:

None required for normal use. Otherwise approved organic vapour-type respirator.

LEAK & SPILL PROCEDURE:

Eliminate sources of ignition. Absorb with earth or sand and dispose with solid waste. Wash site after collection.

WASTE DISPOSAL:

Dispose in compliance with government regulations and local requirements.

STORAGE REQUIREMENTS:

Cool, dry area, away from sources of heat, oxidizing and reducing agents. Keep containers closed when not in use.

EXTREME ALKAMER

MATERIAL SAFETY DATA SHEET**SECTION 8****FIRST AID MEASURES**

SKIN:

Wash thoroughly with soap and warm water

EYE:

Flush with water for at least 15 minutes.

INHALATION:

Vapour pressure is negligible. Remove victim from further exposure.

INGESTION:

Do not induce vomiting. If conscious, dilute by giving two glasses of water. Seek medical attention.

SECTION 9**PREPARATION DATE**

DATE ISSUED:

AUGUST 20, 2009

DATE REVISED:

JANUARY 1, 2012

BY:

PRODUCT SAFETY COMMITTEE

THE DATA REPRESENTED HEREIN IS BELIEVED ACCURATE AND REFLECTS OUR BEST PROFESSIONAL JUDGMENT. HOWEVER, NO WARRANTY OF MERCHANTABILITY, FITNESS FOR ANY USE, OR ANY OTHER WARRANTY IS EXPRESSED OR IMPLIED REGARDING THE ACCURACY OF SUCH DATA, THE RESULTS TO BE OBTAINED FROM THE USE THEREOF, OR THAT ANY SUCH USE DOES NOT INFRINGE ANY PATENT. SINCE THE INFORMATION CONTAINED HEREIN MAY BE APPLIED UNDER CONDITIONS OF USE BEYOND OUR CONTROL AND WITH WHICH WE MAY BE UNFAMILIAR, WE DO NOT ASSUME ANY RESPONSIBILITY FOR THE RESULTS OF SUCH APPLICATION. THIS INFORMATION IS FURNISHED UPON THE CONDITION THAT THE PERSON RECEIVING IT SHALL MAKE HIS OWN DETERMINATION OF THE SUITABILITY OF THE MATERIAL FOR HIS PARTICULAR PURPOSE.

EXTREME ALKAMER

MATERIAL SAFETY DATA SHEET

ADDENDUM

SECTION 10**ECOLOGICAL INFORMATION**

This product has very low acute toxicity.

ACUTE TOXICITY:

- Oral: LD50/oral/rat > 5000 mg/kg
- Dermal: The product is not toxic in contact with the skin.
- Inhalation: The product is not expected to be toxic by inhalation.

IRRITATION:

- Skin: The results obtained using OECD test 404 demonstrated that the product was irritating to the skin.
- Eyes: Irritating to eyes.

SENSITIZATION:

The product is not expected to be sensitizing.

ECOTOXICITY

The product has very low toxicity to aquatic organisms or to the aquatic environment. However, as with all chemical products, do not introduce directly into the environment.

- Fish: LC50 / Fathead minnows / 96 hours > 1000 mg/l
- Algae: EC50 / 72h / Pheodactylum tricornutum > 1000 mg/l
- Daphnie: LC50 / 48h / Chastogrammus marinus ³ 15 mg/l

Bioaccumulation:

The product is not expected to bioaccumulate.

Persistence / degradability:

Not readily biodegradable.

MATERIAL SAFETY DATA SHEET



102, 17910 – 55 Ave., Surrey, BC, Canada V3S 6C8 • Toll Free 1-866-535-6699

Tel: 604-575-6660 Fax: 604-575-5494 e-mail: extreme.ron@telus.net

EXTREME CLAY SEAM

EMERGENCY PHONE NO. (604) 575-6660

PAGE 1 OF 4

WHMIS HAZARD INDEX:

DEGREE OF HAZARD:

HEALTH 1
FIRE 1
REACTIVITY 0
OTHER: B (GLASSES & GLOVES)

HAZARD RATING:

0 LEAST
1 SLIGHT
2 MODERATE
3 HIGH
4 EXTREME

SECTION 1

PRODUCT IDENTIFICATION

PRODUCT NAME:	EXTREME CLAY SEAM
CHEMICAL IDENTIFICATION:	Polyacrylic Acid
MATERIAL USE:	Specialty Clay Dispersant
WHMIS CLASSIFICATION:	Class D-2B
WORK PLACE HAZARD:	Skin, Eye Irritant

TRANSPORTATION OF DANGEROUS GOODS (TDGR)

CLASSIFICATION:	Not Dangerous Goods
PACKAGE GROUP:	Not Applicable
CAS NUMBER:	9003-01-4:2
MSDS CODE:	Not Applicable

SECTION 2

HAZARDOUS INGREDIENTS

INGREDIENT:	Polyacrylic Acid
PERCENTAGE:	30 - 60%
CAS NUMBER:	9003-01-4:2
LD (50):	Not Available
LC (50):	Not Available

EXTREME CLAY SEAM

MATERIAL SAFETY DATA SHEET**SECTION 3****PHYSICAL DATA**

APPEARANCE AND ODOUR:	Liquid, water white to straw colour, mild odour
DENSITY (SPECIFIC GRAVITY):	1.3
BOILING POINT:	> 100°C
MELTING POINT:	Not Applicable
SOLUBILITY:	Soluble
EVAPORATION RATE: (EE=1):	Slower than butyl acetate
VAPOUR PRESSURE: (MM HG):	< 17.5
VAPOUR DENSITY: (AIR = 1):	Same as air
pH:	5.0 - 7.0

SECTION 4**FIRE AND EXPLOSION**

FLASHPOINT:	> 100°C PMCC
FLAMMABLE LIMIT:	Not available
AUTO IGNITION TEMP:	No data
EXTINGUISHING MEDIA:	Dry chemical, carbon dioxide, foam, water spray
SPECIAL FIRE FIGHTING PROCEDURES:	Self-contained respirators for fire fighting personnel.
UNUSUAL FIRE AND EXPLOSION HAZARDS:	Acrid smoke may be generated while burning. carbon monoxide, carbon dioxide, and other oxides may be generated as products of combustion.

SECTION 5**REACTIVITY DATA**

STABILITY (THERMAL, LIGHT, ETC.):	Stable
INCOMPATIBILITY (CONDITIONS TO AVOID):	Strong oxidizing agents and reducing agents, contamination with reactive substances, excessive heat
HAZARDOUS POLYMERIZATION:	Will not occur
HAZARDOUS DECOMPOSITION PRODUCTS:	Acrid smoke, fumes when heated to decomposition. Oxides of carbon.

EXTREME CLAY SEAM

MATERIAL SAFETY DATA SHEET

SECTION 6**HEALTH HAZARDS**

ROUTE OF ENTRY:

(X) SKIN

(X) EYE CONTACT

(X) INHALATION

(X) INGESTION

SKIN CONTACT:

May be minimally irritating to sensitive skin upon prolonged direct contact.

EYE CONTACT:

May be minimally irritating to eyes upon direct contact.

INHALATION:

Product has low vapour pressure and is not expected to present a hazard at ambient temperatures. Caution should be taken to avoid misting.

INGESTION:

Product is practically non toxic by ingestion.

SECTION 7**PREVENTATIVE MEASURES**

SKIN PROTECTION:

Impervious gloves, protective clothing as required
Chemical goggles.

EYE PROTECTION:

VENTILATION:

None required for normal use. Adequate ventilation required if mist is generated.

RESPIRATORY PROTECTION:

Use NIOSH - Approved air-purifying respirator if vapours are generated.

LEAK & SPILL PROCEDURE:

Absorb with earth or sand and dispose of with solid waste. Wash site after spilled material has been collected.

WASTE DISPOSAL:

Dispose in compliance with government regulations and local requirements.

STORAGE REQUIREMENTS:

Cool, dry area, away from sources of heat, alkalis, oxidizing and reducing agents. Keep containers closed when not in use.

EXTREME CLAY SEAM

MATERIAL SAFETY DATA SHEET**SECTION 8****FIRST AID MEASURES**

SKIN:

Wash thoroughly with soap and warm water

EYE:

Flush with water for at least 15 minutes.

INHALATION:

Vapour pressure is negligible. Remove victim from further exposure.

INGESTION:

Do not induce vomiting. If conscious, dilute by giving two glasses of water. Seek medical attention.

SECTION 9**PREPARATION DATE**

DATE ISSUED:

AUGUST 20, 2009

DATE REVISED:

JANUARY 01, 2012

BY:

PRODUCT SAFETY COMMITTEE

THE DATA REPRESENTED HEREIN IS BELIEVED ACCURATE AND REFLECTS OUR BEST PROFESSIONAL JUDGMENT. HOWEVER, NO WARRANTY OF MERCHANTABILITY, FITNESS FOR ANY USE, OR ANY OTHER WARRANTY IS EXPRESSED OR IMPLIED REGARDING THE ACCURACY OF SUCH DATA, THE RESULTS TO BE OBTAINED FROM THE USE THEREOF, OR THAT ANY SUCH USE DOES NOT INFRINGE ANY PATENT. SINCE THE INFORMATION CONTAINED HEREIN MAY BE APPLIED UNDER CONDITIONS OF USE BEYOND OUR CONTROL AND WITH WHICH WE MAY BE UNFAMILIAR, WE DO NOT ASSUME ANY RESPONSIBILITY FOR THE RESULTS OF SUCH APPLICATION. THIS INFORMATION IS FURNISHED UPON THE CONDITION THAT THE PERSON RECEIVING IT SHALL MAKE HIS OWN DETERMINATION OF THE SUITABILITY OF THE MATERIAL FOR HIS PARTICULAR PURPOSE.



AMC CR 650™

AMC

Chemwatch Hazard Alert Code: 0

Chemwatch: 4902-92

Issue Date: 01/09/2018

Version No: 14.1.1.1

Print Date: 10/15/2019

Safety Data Sheet according to WHMIS 2015 requirements

L.GHS.CAN.EN

SECTION 1 IDENTIFICATION

Product Identifier

Product name	AMC CR 650™
Synonyms	PHPA
Other means of identification	Not Available

Recommended use of the chemical and restrictions on use

Relevant identified uses	Drilling fluid additive.
--------------------------	--------------------------

Name, address, and telephone number of the chemical manufacturer, importer, or other responsible party

Registered company name	AMC
Address	1220 N. 2200 W. Suite# 600, Salt Lake City UT 84116 United States
Telephone	801-364-0233
Fax	801-364-0278
Website	www.amcmud.com
Email	amc@imdexlimited.com

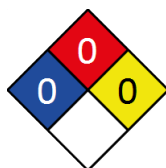
Emergency phone number

Association / Organisation	AMC	CHEMWATCH EMERGENCY RESPONSE
Emergency telephone numbers	Chemwatch - (1) 877 715 9305	+61 2 9186 1132
Other emergency telephone numbers	-	Not Available

SECTION 2 HAZARD(S) IDENTIFICATION

Classification of the substance or mixture

NFPA 704 diamond



Note: The hazard category numbers found in GHS classification in section 2 of this SDSs are NOT to be used to fill in the NFPA 704 diamond. Blue = Health Red = Fire Yellow = Reactivity White = Special (Oxidizer or water reactive substances)

CANADIAN WHMIS SYMBOLS

Classification	Not Applicable
----------------	----------------

Label elements

Hazard pictogram(s)	Not Applicable
---------------------	----------------

SIGNAL WORD	NOT APPLICABLE
-------------	----------------

Hazard statement(s)

Not Applicable

Physical and Health hazard(s) not otherwise classified

Not Applicable

Precautionary statement(s) General

P101	If medical advice is needed, have product container or label at hand.
P102	Keep out of reach of children.

Precautionary statement(s) Prevention

Not Applicable

Precautionary statement(s) Response

Not Applicable

Precautionary statement(s) Storage

Not Applicable

Precautionary statement(s) Disposal

Not Applicable

SECTION 3 COMPOSITION / INFORMATION ON INGREDIENTS**Substances**

See section below for composition of Mixtures

Mixtures

CAS No	%[weight]	Name
Not Available	100	Ingredients determined not to be hazardous

The specific chemical identity and/or exact percentage (concentration) of composition has been withheld as a trade secret.

SECTION 4 FIRST-AID MEASURES**Description of first aid measures**

Eye Contact	If this product comes in contact with eyes: <ul style="list-style-type: none"> ▶ Wash out immediately with water. ▶ If irritation continues, seek medical attention. ▶ Removal of contact lenses after an eye injury should only be undertaken by skilled personnel.
Skin Contact	If skin or hair contact occurs: <ul style="list-style-type: none"> ▶ Flush skin and hair with running water (and soap if available). ▶ Seek medical attention in event of irritation.
Inhalation	<ul style="list-style-type: none"> ▶ If dust is inhaled, remove from contaminated area. ▶ Encourage patient to blow nose to ensure clear passage of breathing. ▶ If irritation or discomfort persists seek medical attention.
Ingestion	<ul style="list-style-type: none"> ▶ If swallowed do NOT induce vomiting. ▶ If vomiting occurs, lean patient forward or place on left side (head-down position, if possible) to maintain open airway and prevent aspiration. ▶ Observe the patient carefully. ▶ Never give liquid to a person showing signs of being sleepy or with reduced awareness; i.e. becoming unconscious. ▶ Give water to rinse out mouth, then provide liquid slowly and as much as casualty can comfortably drink. ▶ Seek medical advice.

Indication of any immediate medical attention and special treatment needed

Treat symptomatically.

SECTION 5 FIRE-FIGHTING MEASURES**Extinguishing media**

- ▶ There is no restriction on the type of extinguisher which may be used.
- ▶ Use extinguishing media suitable for surrounding area.

Special hazards arising from the substrate or mixture

Fire Incompatibility	None known.
-----------------------------	-------------

Special protective equipment and precautions for fire-fighters

Fire Fighting	<ul style="list-style-type: none"> ▶ Alert Fire Brigade and tell them location and nature of hazard. ▶ Wear breathing apparatus plus protective gloves in the event of a fire.
Fire/Explosion Hazard	<ul style="list-style-type: none"> ▶ Non combustible. ▶ Not considered a significant fire risk, however containers may burn. <p>Decomposes on heating and produces toxic fumes of: carbon monoxide (CO) carbon dioxide (CO₂) nitrogen oxides (NO_x)</p>

SECTION 6 ACCIDENTAL RELEASE MEASURES**Personal precautions, protective equipment and emergency procedures**

See section 8

Environmental precautions

See section 12

Methods and material for containment and cleaning up

Minor Spills	<ul style="list-style-type: none"> ▶ Clean up all spills immediately. ▶ Avoid contact with skin and eyes.
Major Spills	<ul style="list-style-type: none"> ▶ Clear area of personnel and move upwind. ▶ Alert Fire Brigade and tell them location and nature of hazard.

Personal Protective Equipment advice is contained in Section 8 of the SDS.

SECTION 7 HANDLING AND STORAGE**Precautions for safe handling**

Safe handling	<ul style="list-style-type: none"> ▶ Limit all unnecessary personal contact. ▶ Wear protective clothing when risk of exposure occurs.
Other information	<ul style="list-style-type: none"> ▶ Store in original containers. ▶ Keep containers securely sealed.

Conditions for safe storage, including any incompatibilities

Suitable container	<ul style="list-style-type: none"> ▶ Lined metal can, lined metal pail/ can. ▶ Plastic pail.
Storage incompatibility	Avoid contamination of water, foodstuffs, feed or seed.

SECTION 8 EXPOSURE CONTROLS / PERSONAL PROTECTION**Control parameters****OCCUPATIONAL EXPOSURE LIMITS (OEL)****INGREDIENT DATA**


Not Available

EMERGENCY LIMITS

Ingredient	Material name	TEEL-1	TEEL-2	TEEL-3
AMC CR 650™	Not Available	Not Available	Not Available	Not Available

Ingredient	Original IDLH	Revised IDLH
AMC CR 650™	Not Available	Not Available

MATERIAL DATA**Exposure controls**

Appropriate engineering controls	Engineering controls are used to remove a hazard or place a barrier between the worker and the hazard. Well-designed engineering controls can be highly effective in protecting workers and will typically be independent of worker interactions to provide this high level of protection.
Personal protection	
Eye and face protection	<ul style="list-style-type: none"> ▸ Safety glasses with side shields ▸ Chemical goggles. ▸ Contact lenses may pose a special hazard; soft contact lenses may absorb and concentrate irritants.
Skin protection	See Hand protection below
Hands/feet protection	<p>The selection of suitable gloves does not only depend on the material, but also on further marks of quality which vary from manufacturer to manufacturer. Where the chemical is a preparation of several substances, the resistance of the glove material can not be calculated in advance and has therefore to be checked prior to the application. Experience indicates that the following polymers are suitable as glove materials for protection against undissolved, dry solids, where abrasive particles are not present.</p> <ul style="list-style-type: none"> ▸ polychloroprene.
Body protection	See Other protection below
Other protection	<p>No special equipment needed when handling small quantities.</p> <p>OTHERWISE:</p> <ul style="list-style-type: none"> ▸ Overalls.

Respiratory protection

Particulate. (AS/NZS 1716 & 1715, EN 143:2000 & 149:001, ANSI Z88 or national equivalent)

Required Minimum Protection Factor	Half-Face Respirator	Full-Face Respirator	Powered Air Respirator
up to 10 x ES	P1 Air-line*	- -	PAPR-P1 -
up to 50 x ES	Air-line**	P2	PAPR-P2
up to 100 x ES	-	P3	-
		Air-line*	-
100+ x ES	-	Air-line**	PAPR-P3

* - Negative pressure demand ** - Continuous flow

A(All classes) = Organic vapours, B AUS or B1 = Acid gasses, B2 = Acid gas or hydrogen cyanide(HCN), B3 = Acid gas or hydrogen cyanide(HCN), E = Sulfur dioxide(SO₂), G = Agricultural chemicals, K = Ammonia(NH₃), Hg = Mercury, NO = Oxides of nitrogen, MB = Methyl bromide, AX = Low boiling point organic compounds(below 65 degC)

SECTION 9 PHYSICAL AND CHEMICAL PROPERTIES

Information on basic physical and chemical properties

Appearance	White powder, soluble in water.		
Physical state	Divided Solid	Relative density (Water = 1)	Not Available
Odour	Not Available	Partition coefficient n-octanol / water	Not Available
Odour threshold	Not Available	Auto-ignition temperature (°C)	Not Applicable
pH (as supplied)	Not Applicable	Decomposition temperature	Not Available
Melting point / freezing point (°C)	>150	Viscosity (cSt)	Not Applicable
Initial boiling point and boiling range (°C)	Not Available	Molecular weight (g/mol)	Not Applicable
Flash point (°C)	Not Applicable	Taste	Not Available
Evaporation rate	Not Applicable	Explosive properties	Not Available
Flammability	Not Applicable	Oxidising properties	Not Available
Upper Explosive Limit (%)	Not Applicable	Surface Tension (dyn/cm or mN/m)	Not Applicable

Lower Explosive Limit (%)	Not Applicable	Volatile Component (%vol)	Not Available
Vapour pressure (kPa)	Not Applicable	Gas group	Not Available
Solubility in water	Miscible	pH as a solution (1%)	5.0-9.0 (@ 5 g/L)
Vapour density (Air = 1)	Not Applicable	VOC g/L	Not Available

SECTION 10 STABILITY AND REACTIVITY

Reactivity	See section 7
Chemical stability	Product is considered stable and hazardous polymerisation will not occur.
Possibility of hazardous reactions	See section 7
Conditions to avoid	See section 7
Incompatible materials	See section 7
Hazardous decomposition products	See section 5

SECTION 11 TOXICOLOGICAL INFORMATION

Information on toxicological effects

Inhaled	The material is not thought to produce adverse health effects or irritation of the respiratory tract (as classified by EC Directives using animal models). Nevertheless, good hygiene practice requires that exposure be kept to a minimum and that suitable control measures be used in an occupational setting.
Ingestion	The material has NOT been classified by EC Directives or other classification systems as "harmful by ingestion". This is because of the lack of corroborating animal or human evidence.
Skin Contact	The material is not thought to produce adverse health effects or skin irritation following contact (as classified by EC Directives using animal models). Nevertheless, good hygiene practice requires that exposure be kept to a minimum and that suitable gloves be used in an occupational setting.
Eye	Although the material is not thought to be an irritant (as classified by EC Directives), direct contact with the eye may cause transient discomfort characterised by tearing or conjunctival redness (as with windburn). Slight abrasive damage may also result.
Chronic	Long-term exposure to the product is not thought to produce chronic effects adverse to health (as classified by EC Directives using animal models); nevertheless exposure by all routes should be minimised as a matter of course. Long term exposure to high dust concentrations may cause changes in lung function (i.e. pneumoconiosis) caused by particles less than 0.5 micron penetrating and remaining in the lung. A prime symptom is breathlessness.
AMC CR 650™	TOXICITY
	Not Available
AMC CR 650™	IRRITATION
	Not Available
Legend:	1. Value obtained from Europe ECHA Registered Substances - Acute toxicity 2. * Value obtained from manufacturer's SDS. Unless otherwise specified data extracted from RTECS - Register of Toxic Effect of chemical Substances

Acute Toxicity	✗	Carcinogenicity	✗
Skin Irritation/Corrosion	✗	Reproductivity	✗
Serious Eye Damage/Irritation	✗	STOT - Single Exposure	✗
Respiratory or Skin sensitisation	✗	STOT - Repeated Exposure	✗
Mutagenicity	✗	Aspiration Hazard	✗

Legend: ✗ – Data either not available or does not fill the criteria for classification
✓ – Data available to make classification

SECTION 12 ECOLOGICAL INFORMATION

Toxicity

AMC CR 650™	ENDPOINT	TEST DURATION (HR)	SPECIES	VALUE	SOURCE

	Not Available	Not Available	Not Available	Not Available	Not Available
Legend:	Extracted from 1. IUCLID Toxicity Data 2. Europe ECHA Registered Substances - Ecotoxicological Information - Aquatic Toxicity 3. EPIWIN Suite V3.12 (QSAR) - Aquatic Toxicity Data (Estimated) 4. US EPA, Ecotox database - Aquatic Toxicity Data 5. ECETOC Aquatic Hazard Assessment Data 6. NITE (Japan) - Bioconcentration Data 7. METI (Japan) - Bioconcentration Data 8. Vendor Data				

DO NOT discharge into sewer or waterways.

May be harmful to fauna if not disposed of according to Section 13 and legislative requirements. [AMC]

Persistence and degradability

Ingredient	Persistence: Water/Soil	Persistence: Air
	No Data available for all ingredients	No Data available for all ingredients

Bioaccumulative potential

Ingredient	Bioaccumulation
	No Data available for all ingredients

Mobility in soil

Ingredient	Mobility
	No Data available for all ingredients

SECTION 13 DISPOSAL CONSIDERATIONS

Waste treatment methods

Product / Packaging disposal	<ul style="list-style-type: none"> ▶ Recycle wherever possible or consult manufacturer for recycling options. ▶ Consult State Land Waste Management Authority for disposal.
------------------------------	---

SECTION 14 TRANSPORT INFORMATION

Labels Required

Marine Pollutant	NO
------------------	----

Land transport (TDG): NOT REGULATED FOR TRANSPORT OF DANGEROUS GOODS

Air transport (ICAO-IATA / DGR): NOT REGULATED FOR TRANSPORT OF DANGEROUS GOODS

Sea transport (IMDG-Code / GGVSee): NOT REGULATED FOR TRANSPORT OF DANGEROUS GOODS

Transport in bulk according to Annex II of MARPOL and the IBC code

Not Applicable

SECTION 15 REGULATORY INFORMATION

Safety, health and environmental regulations / legislation specific for the substance or mixture

This product has been classified in accordance with the hazard criteria of the Controlled Products Regulations and the SDS contains all the information required by the Controlled Products Regulations.

National Inventory Status

National Inventory	Status
Australia - AICS	Yes
Canada - DSL	Yes
Canada - NDSL	Yes
China - IECSC	Yes
Europe - EINEC / ELINCS / NLP	Yes
Japan - ENCS	Yes

Korea - KECI	Yes
New Zealand - NZIoC	Yes
Philippines - PICCS	Yes
USA - TSCA	Yes
Taiwan - TCSI	Yes
Mexico - INSQ	Yes
Vietnam - NCI	Yes
Russia - ARIPS	Yes
Legend:	<p><i>Yes = All CAS declared ingredients are on the inventory</i></p> <p><i>No = One or more of the CAS listed ingredients are not on the inventory and are not exempt from listing(see specific ingredients in brackets)</i></p>

SECTION 16 OTHER INFORMATION

Revision Date	01/09/2018
Initial Date	Not Available

SDS Version Summary

Version	Issue Date	Sections Updated
13.1.1.1	10/12/2017	Appearance, Environmental, Fire Fighter (fire/explosion hazard), Ingredients, Physical Properties, Supplier Information, Use
14.1.1.1	01/09/2018	Name

Other information

Classification of the preparation and its individual components has drawn on official and authoritative sources as well as independent review by the Chemwatch Classification committee using available literature references.

The SDS is a Hazard Communication tool and should be used to assist in the Risk Assessment. Many factors determine whether the reported Hazards are Risks in the workplace or other settings.

Definitions and abbreviations

PC—TWA: Permissible Concentration-Time Weighted Average
 PC—STEL: Permissible Concentration-Short Term Exposure Limit
 IARC: International Agency for Research on Cancer
 ACGIH: American Conference of Governmental Industrial Hygienists
 STEL: Short Term Exposure Limit
 TEEL: Temporary Emergency Exposure Limit
 IDLH: Immediately Dangerous to Life or Health Concentrations
 OSF: Odour Safety Factor
 NOAEL :No Observed Adverse Effect Level
 LOAEL: Lowest Observed Adverse Effect Level
 TLV: Threshold Limit Value
 LOD: Limit Of Detection
 OTV: Odour Threshold Value
 BCF: BioConcentration Factors
 BEI: Biological Exposure Index

This document is copyright.

Apart from any fair dealing for the purposes of private study, research, review or criticism, as permitted under the Copyright Act, no part may be reproduced by any process without written permission from CHEMWATCH.

The product is with a concentration less than 5% in a drilling fluid as a non-hazardous chemical classified.