

## **Non-Technical Summary for the Meadowbank Precious Metal Property**

The Meadowbank Precious Metal Property is located in the Kivalliq Region of Nunavut, within the 1:250,000 scale NTS map sheets, 66A and 66H. The Property is approximately 30 to 100 km north of the community of Baker Lake and consists of three project areas: Area A to the north, Area B in the centre and Area C to the south (Figure 1).

The 2017 proposed exploration program will be supported by a temporary, 6 to 10 person exploration camp. The program is anticipated to commence June 15th, 2017 and run for 6 weeks (42 days). Personnel and cargo will be transported to the camp along the Agnico-Eagle Meadowbank Road and then flown to site via helicopter. Structures for the proposed camp may include 4 sleeper tents, 1 kitchen, 1 dry, 1 generator shack, and 1 outhouse. The majority of the structures will be insulated Weatherhaven tents, or similar, with tarp floors.

A fuel cache of less than 4,000 L (approximately 19 drums) will be established on stable ground near the camp, primarily to store diesel and jet fuel. Small quantities of gasoline and propane will also be stored. Small remote temporary fuel caches (less than 4,000 L), may also be required to supply the exploration program. Within 30 days of the establishment of any temporary fuel cache, the appropriate agencies will be notified of the details of the cache including: GPS location, fuel type, container sizes, method of storage and proposed date of removal. The temporary fuel cache GPS locations will also be included in the annual reports submitted to Indigenous and Northern Affairs Canada (INAC), the Nunavut Water Board (NWB) and the Nunavut Impact Review Board (NIRB).

The proposed 2017 exploration activities for the Meadowbank Precious Metal Property include prospecting, till sampling and ground geophysical surveys. The intent of the 2017 exploration program is to delineate targets for diamond drilling. As soon as targets are identified for drilling INAC, NWB and NIRB will be notified and supplied with locations and maps. All exploration work and drilling will be strictly confined to the Areas A, B and C (Figure 1).

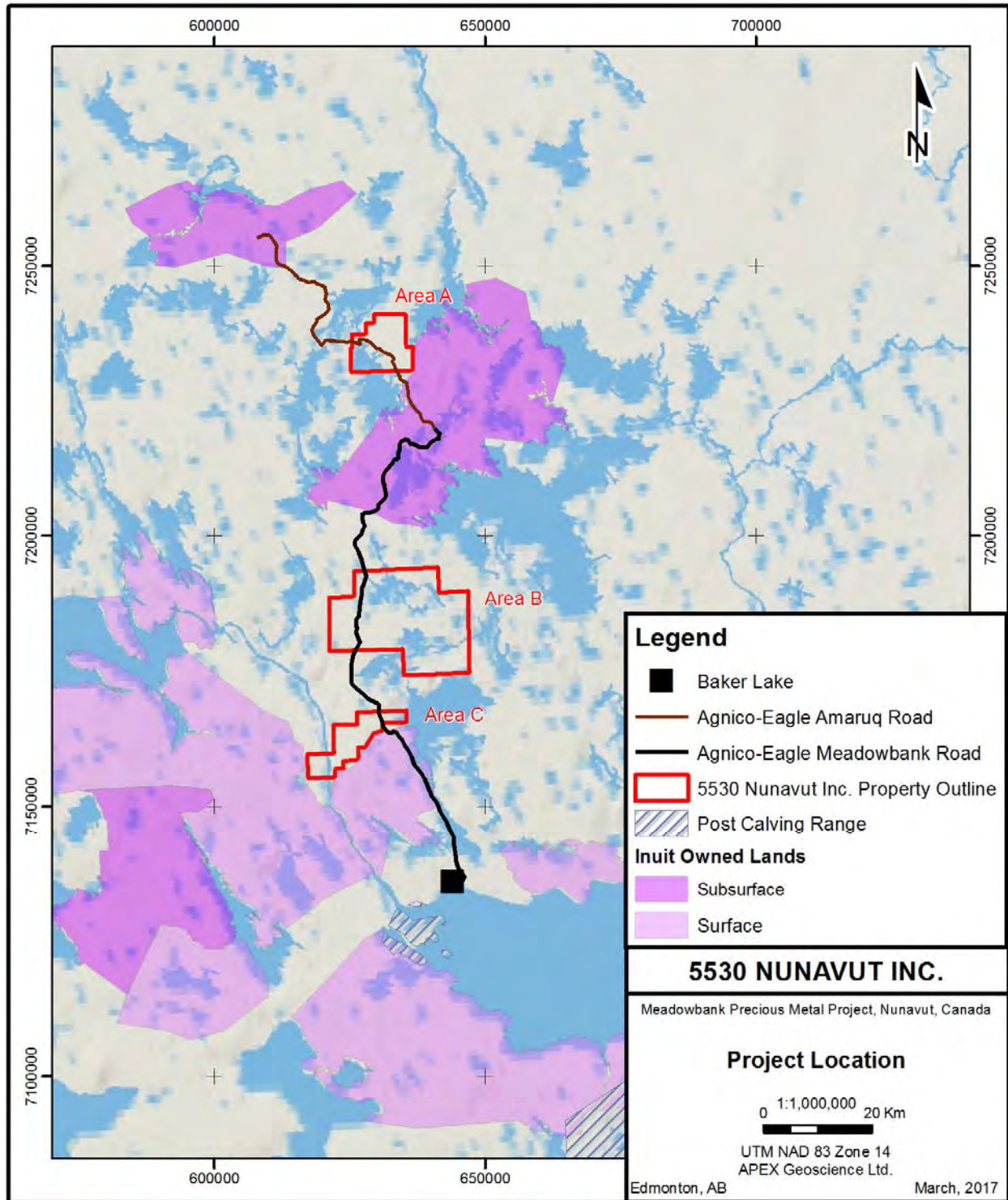


Figure 1.