

APEX GEOSCIENCE LTD

Emergency Response Plan for

5530 Nunavut Inc

a subsidiary of

Western Atlas Resources Inc.

Meadowbank Precious Metal Project

**Western Atlas
Resources**

Date Created: July 3, 2020

Date Revised: June 1, 2021

Acknowledgment

This Mine Emergency Response Plan has been compiled by APEX Geoscience from various public and private information sources, such as the ***Health, Safety and Reclamation Code for Mines in British Columbia, 2017 (BC HSRC)***, the ***British Columbia Occupational Health and Safety Regulation, 2019 (BC OHSR)*** and the ***Alberta Occupational Health and Safety Code, 2018 (AB OHSC)***. The information contained herein is consistent with the level of involvement by APEX and has been produced from the noted information sources. Any other use of, or reliance on this report by any third party is at that party's sole risk.

For the Meadowbank Precious Metal Project, the following regulations have also been reviewed: ***NWT and NU Mine Health and Safety Act and Regulations, Territorial Land Use Regulations of Canada***, and the ***Nunavut Safety Act Occupational Health and Safety Regulations***.

Table of Contents

1.0	INTRODUCTION and PURPOSE	3
2.0	SITE and OPERATIONAL INFORMATION	3
3.0	EMERGENCY NOTIFICATION CHART	4
4.0	HAZARD ANALYSIS OF OPERATION	7
5.0	EMERGENCY EQUIPMENT	10
6.0	PROCEDURES FOR HANDLING MEDICAL EMERGENCIES	11
7.0	PROCEDURES WHEN CALLING FOR A PROVINCIAL AMBULANCE	12
8.0	HYDROCARBON SPILL PROCEDURE– <i>Meadowbank Precious Metal Property</i>	13
9.0	FUEL MANAGEMENT AND SPILL CONTINGENCY PLAN (FMSCP)	14
10.0	MAP (to print and post)	16
11.0	FIRST RESPONSE PROTOCOL (to print and post)	18
12.0	CONTACT LIST (to print and post)	22
13.0	<i>5530 Nunavut Inc - Meadowbank Precious Metal Property</i> ERP RECORD (to print and sign)	24

1.0 INTRODUCTION and PURPOSE

The Emergency Response Plan (hereinafter called the “ERP”) has been prepared to provide key officials, agencies, departments and employees within the mining operation with a “general” guideline to the initial response to an emergency and an overview of their responsibilities during an emergency. For this plan to be effective, it is important that all concerned be made aware of its provisions and that every official, agency, department and employee be prepared to carry out their assigned functions and responsibilities in an emergency.

Note: Each member working on-site will receive a copy of this document and will be instructed in regard to emergency procedures.

2.0 SITE and OPERATIONAL INFORMATION

Mine Name: Meadowbank Precious Metal Project:

Helicopter accessible:

- *Area B claim block is located approximately 45 km north of Baker Lake, NU and will be accessed via helicopter during the work program.*

Road accessible:

- *Area B claim block is accessible by the Agnico-Eagle Meadowbank road the runs through the western part of the claim block. The road comes within 15 km of the exploration area. This road is a private road owned by Agnico-Eagle and would only be available for use after permission is granted.*

Site Location:

Baker Lake Lodge Lat: 64.320302 Long: -96.036234
1041 First Ave. Baker lake, NU.

Drill Site Location #1 Lat: 64.699997 Long: -96.030563

Specific Directions to the Site: Crews will fly from the Baker Lake airport via helicopter to the exploration sites, approximately a 15-minute flight over 45 km.

Satellite Phone No.:	Phone 1: 8816 3262 9860 Phone 2: 8816 3168 2358
Manager:	Konstantin Lesnikov
Contact Phone No.:	1 (867) 327-0098
Email Address:	klesnikov@westernar.com
Type of Operation:	Diamond Drilling
Number of Employees on site:	up to 7 (5 drillers, pilot and WA geologist)

3.0 EMERGENCY NOTIFICATION CHART

Designated reporting structure and communication protocol:

Your role:	Party to communicate with:	Communication device:
Worker	Project First Aid Attendant, Project manager/supervisor, Crew leader, Emergency Services.	SPOT, cell phone, satellite phone, two-way radios, ELT, email.
First Aid Attendant	Project manager/ supervisor, Crew leader, Vehicle (truck, helicopter) operator, Emergency Services.	SPOT, cell phone, satellite phone, two-way radios, ELT, email.
Crew Leader/supervisor	Project First Aid Attendant, Vehicle (truck, helicopter) operator, Emergency Services, Travel Agent.	SPOT, cell phone, satellite phone, two-way radios, ELT, email.
Senior Management	Project First Aid Attendant, Project manager/supervisor, Crew leader, Client contact, Client management, Parents of injured worker, Media, Emergency Services, Travel Agent.	SPOT, cell phone, landline, satellite phone, two-way radios, email.

CAMP CONTACTS	
<i>Konstantin Lesnikov</i>	<i>1 (867) 327-0098</i>
<i>FA - Konstantin Lesnikov</i>	<i>1 (867) 327-0098</i>
<i>Keven Perot Servant</i>	<i>1 (891) 471-7571</i>
<i>SAT phone number</i>	<i>8816 3168 2358</i>
<i>Baker Lake Lodge</i>	<i>1 (867) 793-2905</i>
Camp:	Contact info – phone and location TBA
MEDICAL EMERGENCY CONTACTS	
HOSPITAL	
<i>Baker Lake Health Center</i>	<i>1-867-793-2816</i>
<i>Kivalliq Heath Center</i>	<i>1-867-645-8300</i>
RCMP	
<i>Baker Lake RCMP</i>	<i>1-867-793-1111 emergency</i>
<i>Baker Lake, Nu, X0C 0A0</i>	<i>1-867-793-0123 non-emergency</i>
SEARCH & RESCUE	
<i>Baker Lake Search and Rescue</i>	<i>1-867-793-2503 or 1-867-793-4512</i>

<i>Search and Rescue Nunavut Emergency Line</i>	<i>1-800-693-1666</i>
FIRE DEPARTMENT	
<i>Baker Lake Fire Hall</i>	<i>1-867-793-2900</i>
POISON CONTROL	<i>1-800-268-9017</i>
Emergency Measures 24 Hour TOLL FREE:	<i>1-800-693-1666</i>
Emergency Services Response 24 Hours:	<i>1-867-979-6262</i>
<i>Chief Inspector of Mines – Cary Ingram</i>	<i>1-867-920-3805</i>
<i>Senior OHS Inspector – Sheena Jensen</i>	<i>1-867-920-3849</i>
<i>24 Hour Hotline for Serious Accidents</i>	<i>1-800-661-0792</i>
ENVIRONMENTAL	
<i>Government of Nunavut – General Inquiries</i>	<i>1-877-212-6438</i>
<i>Department of Economic Development and Transportation – Kivalliq</i>	<i>1-844-737-8627</i>
<i>Weather – Environment Canada</i>	https://weather.gc.ca/
<i>Wildlife Office (Baker Lake)</i>	<i>1-867-793-2944</i>
<i>Department of Environment - General Inquiries</i>	<i>1-867-975-7700</i>
<i>WSCC - Report a Claim</i>	<i>1-800-661-0792</i>
<i>WSCC - Iqaluit</i>	reportsnu@wscc.nu.ca
<i>Spills and Environmental Emergencies</i>	<i>1-867-920-8130</i>
EMERGENCY REPORTING AND SUPPORT	
<i>Chief Inspector of Mines – Cary Ingram</i>	<i>1-867-920-3805</i>
<i>Senior OHS Inspector – Sheena Jensen</i>	<i>1-867-920-3849</i>
<i>WSCC- Emergency and accident reporting Claims Mailing Address (Employers): Box 669, Iqaluit, NU X0A 0H0</i>	<i>1-800-661-0792</i> reportsnu@wscc.nu.ca
<i>Emergency Management – Nunavut</i>	<i>1-800-693-1666</i>
<i>Mental Health Nurse – Baker Lake</i>	<i>1-867-793-2816</i>
<i>Mental Health Outreach – Baker Lake</i>	<i>1-867-793-2085</i>
TRANSPORTATION	
<i>Helicopter Transport Services (HTCS)</i>	<i>1 (613) 295-2897</i>
<i>Air Ambulance</i>	<i>1-867-793-2816 (Health Centre)</i>
<i>Department of Economic Development and Transportation – Kivalliq</i>	<i>1-844-737-8627</i>
SPILLS AND DISASTER CONTACTS	
<i>Provincial Emergency Program (Spills)</i>	<i>1-867-920-8130</i>
<i>Environment Canada (Emergency Reports)</i>	<i>1-604-666-6100</i>
COMPANY CONTACT	
APEX Geoscience Ltd. <i>A. Edmonton, Canada #100, 11450 160 St NW,</i>	<i>A. Tel: 1 (780) 467-3532</i>

<i>Edmonton, AB, T5M 3Y7 Canada</i> <i>B. Vancouver, Canada 410-800 W. Pender St. Vancouver, BC V6C 2V6 Canada</i>	 <i>B. Tel: 1 (604) 696-9628</i>
<i>5530 Nunavut Inc. (subsidiary of Western Atlas Resources Inc.) 666 Burrard Street, Suite 1700, Park Place Vancouver, BC V6C 2X8</i>	 <i>Tel: 1 (604) 256 4777 Tel: 1 (778) 389-7274 www.westernar.com</i>

4.0 HAZARD ANALYSIS OF OPERATION

- Fire and Explosion
- Environmental
- Injury to Workers
- Equipment Failures
- Fuel Spills

The above is only a limited list of potential hazards; therefore this document is designed to be a living document that will grow with the mining operation. Annual reviews of risk hazards must and will be completed by a trained and authorized company representative.

Emergency situations (trauma, medical, environmental):

Emergency: (identified or pulled from Hazard assessment library)	Means of prevention:	Procedure to deal with emergency:
Fire on site	<p>Be vigilant of fire starters, sparks, cigarette butts, hot machinery near dry grass.</p> <p>Have easy access and awareness of fire extinguisher locations.</p>	<p>If any worker discovers a fire:</p> <ul style="list-style-type: none"> - Call for help - Remove anyone in danger - Use a fire extinguisher to put out fire <p>If the fire cannot be put out:</p> <ul style="list-style-type: none"> - Evacuate premises - Contact fire department <p>If any worker is on fire:</p> <ul style="list-style-type: none"> - Stop, drop, roll <p>If any worker is trapped in enclosed space:</p> <ul style="list-style-type: none"> - Call for help - Stay low - Cover mouth and nose with damp cloth
Illness or injury	<p>Carry appropriate personal medication.</p> <p>Be aware of dangers and take steps to avoid or minimize risk.</p>	<p>Serious illness or injury:</p> <ul style="list-style-type: none"> - Notify <u>Konstantin Lesnikov</u> immediately - Request dispatch of emergency air ambulance/support - First aid attendant administers first aid - Air transport to <u>Baker Lake Health Center</u> <p>Minor Injuries:</p> <ul style="list-style-type: none"> - Notify <u>Konstantin Lesnikov</u> - First aid attendant administers first aid - Arrange for follow up doctor's appointment if needed
Chemical spills	Use appropriate storage and handling techniques.	<p>Identify the name, flammability, and volume of the spill.</p> <p>Large volumes or flammable spills:</p> <ul style="list-style-type: none"> - Clear site - Notify fire department

		<ul style="list-style-type: none"> - Notify provincial emergency program if spill exceeds 100 L : 1-867-920-8130 <p>Land spills:</p> <ul style="list-style-type: none"> - Mark perimeter of spill - Dig recovery ditches around perimeter and within the spill area to contain the spill - Remove free product using sorbent pads - Excavate contaminated soil <p>Ditch or stream water spills:</p> <ul style="list-style-type: none"> - Contain the spill using a tarp containment system, underflow system, or containment booms <p>Open water spills:</p> <ul style="list-style-type: none"> - Divert the spill using sorbent booms - Use sorbent pads to collect spill product
Arctic climate (wind damage, snow extreme cold and fog)	Take necessary steps to prepare and pack for adverse or extreme weather conditions.	<u>Konstantin Lesnikov</u> will suspend exploration activities at their discretion.
Working with Helicopters	<p>Follow instructions demonstrated by the pilot during helicopter safety training</p> <p>Always be cautious and aware of your movements around the machine</p>	<ul style="list-style-type: none"> - Follow directions from the pilot on what to do during any emergency involving the helicopter.
Working Alone	Avoid if at all possible	<ul style="list-style-type: none"> - Check in every two hours, if check in is not completed emergency response procedure are activated.
Wildlife	<p>No Harassing or Feeding of Wildlife</p> <p>Remove/Reduce Attractants</p> <p>Carry Personal deterrents</p>	<ul style="list-style-type: none"> - Garbage food and other attractants is to be placed in designated disposal containers - Food is not to be left in tents - No intentional feeding of wildlife <p>If Wildlife is encountered in the field:</p> <ul style="list-style-type: none"> - Follow behavioral protocol depending on type of wildlife encounter - Deploy Personal deterrent devices (gun, bear spray) <p>Log Wildlife sightings and encounters:</p> <ul style="list-style-type: none"> - Log sightings <p>Report hazardous interactions</p>

Communicable Disease Outbreak – COVID -19	<p>Follow guidelines set out in the COVID-19 Safety Plan – Prevention and Control Protocol</p> <p>Maintain social distance, use PPE when required, increase hygiene</p>	<p>If you fall ill:</p> <ul style="list-style-type: none">- Immediately stop work, don a mask, and inform your supervisor and/or medic- Your supervisor and/or medic will make arrangements to quarantine you and to support you in camp until you recover or until an emergency evacuation is deemed necessary <p>(see COVID-19 Safety Plan for detailed protocol)</p>
---	---	--

Fabio Capponi has the authority to declare the emergency is over.

5.0 EMERGENCY EQUIPMENT

There will be a specific location and certain equipment utilized at this exploration site. All personnel on-site will receive basic orientation training, and all employees will be required to have at a minimum Standard First Aid Certification to work on the site.

5530 Nunavut Inc. will coordinate the availability of the first aid equipment, supplies and facilities that must be kept clean, dry, and ready for use, and be readily accessible at any time a worker works in the workplace. The company will comply with **Schedule 1 and 2** of the **WSCC MHSR**.

Emergency Equipment

Emergency equipment	Location of emergency equipment	Operational procedures for equipment
Fire Extinguisher	At drill	1. Pull the pin 2. Aim nozzle at base of fire 3. Squeeze trigger Sweep side to side
First Aid Kit (Standard)	At drill	Fill out an incident report form every use of first aid kit.
Satellite Phone	At drill	Available at all times
GPS SPOT	Drillers	Follow SPOT Protocol
Cell Phone	Field Personnel	Available at all times
Radios	Field Personnel	Available at all times
Bear Deterrents (horn, spray, and bangers)	Gun in helicopter	Available to pilot at all times
Survival Shelters (2)	At drill	To be used in Survival Conditions

General Safety Equipment: Hard hats, eye protection (safety goggles and glasses), hearing protection, hand protection (appropriate work gloves), safety boots, bear bangers, communication devices (2-way radios), and safety signs. Due to the current Covid19 global pandemic, PPE now includes gloves, face masks/coverings, hand sanitizer and disinfecting wipes.

A helicopter will be available to use as required in response to an emergency scenario.

First aid service requirements

Approximate total number of workers at site	- Up to <u>7</u> workers
Hazard rating	- High hazard risk due to diamond drilling work and distance from medical services
Required first aid supplies (type of kit, other supplies, need for a designated space or first aid room)	- Standard First Aid kit at drill with Attendant
Required first aid attendant(s) (# of first aiders, advanced first aiders, nurse, ACP)	- Standard First Aid Attendant

6.0 PROCEDURES FOR HANDLING MEDICAL EMERGENCIES

The following assessment will be necessary during any medical emergency whether it is minor or life threatening that the first aider use the following simplified **Priority Action Approach**

- 1) **Scene Assessment** – Mechanism of Injury? Hazards? Environment?
 - I. First Observe for bleeding/deformities/eyes
 - II. Second Observe the skin/level of conscious – moving/verbal
 - III. Third Spinal Precautions
 - IV. Fourth **Airways** – With C-spine: Open/Clear – manually stabilize head
Breathing – Rate and Quality
Circulation – Radial/Carotid, skin – color, temperature, and condition
 - V. Fifth Rapid Body Search (RBS) – Rapid/Through Life Threatening
 - VI. Sixth Warmth - Blankets/Reassurance/Support Injuries
- 2) **Transport Decision** – Load and Go (Hospital and/or Call for an ambulance)/Stay and Play (Administer First Aid)
- 3) **Communicate to Emergency Services**
Baker Lake Health Center **1-867-793-2816**
 or call for help from other persons on-site
- 4) **Secondary Assessment** Vital, History, Head to Toe Evaluation
- 5) **Definitive Treatment** Ice, Dressings, Splitting, Wound Cleaning, etc.
- 6) **Inform Chief Safety Officer** as soon as reasonably possible, as per the *WSCC Occupational Health and Safety Regulations*.

Typical first aid scenarios that you might encounter during operations– so be prepared for this and know how to treat them

- Bleeding from cuts and abrasions;
- Slips and Falls – Injuries such strains, sprains, and broken bones (fractures) or concussions;
- Burns; and allergic reactions

Designated primary First Aid Attendant: Konstantin Lesnikov

Designated camp emergency workers:

Position	Name	Training Received:	Frequency (time frame when training needs renewing)
Project Field Supervisor	Konstantin Lesnikov	Supervisor Level II – Exploration Certificate	June 15, 2025

First Aid Attendant	Konstantin Lesnikov	Canadian Red Cross - Standard First Aid & CPR/AED Level C	January 9, 2022
Worker	Kevin Perron Servant	Supervisor Level II – Exploration Certificate	March 21, 2021
Worker	Kevin Perron Servant	Santinel, Cardio-Securs/DEA/Anaphylaxie Cours CNSST	Feb 14, 2022
		Cerificate of Securisme General RCR-DEA	Feb 07, 2022

7.0 PROCEDURES WHEN CALLING FOR AN AMBULANCE/MEDIVAC

When instructed by the First Aid Attendant or the Direct Supervisor, follow these steps.

Baker Lake Health Center:

Phone **1-867-793-2816**

When asked "For what place?" answer "**Location – Meadowbank Precious Metal Property**"

State that "We have life threatening injuries and request vehicle or helicopter evacuation."

There will be a number of questions that will be asked including:

"Your exact location?"

Location:

"The site coordinates are?" **in decimal coordinates, NOT DMS OR UTM**

- *Bake Lake Lodge* **Lat: 64.320302 Long: -96.036234**
- *Where the injured person is* **Lat: Long:**

"Your telephone number?" +1 (778) 227-5436

"What is the nature of the problem?"

"What is the number of patients?"

"What is the age of the patient(s)?"

"What is the level of consciousness of the patient(s)?"

"What is the breathing status of the patient(s)?"

Additional questions may follow:

If you are calling for an air ambulance, then you must make ready a helicopter landing pad.

This area must be clearly marked and cleared of debris that will not damage any rotors and flying objects. A guard must be posted in this area and all traffic in the vicinity stopped.

The helicopter will be looking for this area and can be guided into the landing area.

8.0 HYDROCARBON SPILL PROCEDURE– *Meadowbank Precious Metal Property*

Action Items for Initial Spill Identification, Notification and Assessment

Action Items for Initial Spill Identification, Notification and Assessment

- Identify spilled material;
- Safety of personnel;
- Determine and note initial spill description;
- Notify **Spills and Environmental Emergencies; 1-867-920-8130**; if required
- Description of spill into the receiving environment;
- Determine equipment needed for initial containment, recovery, in addition, clean-up;
- Initial Spill Response for Combustible Products with actions to be undertaken;

Initial Spill Response for Combustible Products with actions to be undertaken

- Act Fast & Think Safety;
- Containment & Recovery; and
- Disposal and Site Restoration

Spill Prevention and Response Strategies

The proposed spill prevention and response strategies constitute the following:

- Notify key personnel who have emergency response duties;
- Initial assessment of the spill to understand the nature and extent of the situation;
- Mobilization of resources needed to address the spill;
- Do not handle hazardous waste without sufficient protective gear;
- Evaluate method to control activities;
- Initiation & development of safety & environmental monitoring to identify potential effects of the spill;
- Reporting to management, regulatory agencies, personnel, and the public; and
- Development of an action plan for clean-up and remediation.

Spill Control Prevention Procedures

- The supervisor shall review any proposed activity out of the ordinary that could pose a potential for environmental contamination;
- Any worker who is aware of any potential or actual release of a pollutant to the environment must first attempt to prevent the release, then immediately contact their supervisor;
- All work shall be planned to limit the uncontrolled release of pollutant materials to the environment, so far as is practical;
- Approved containers shall be used for the transport and storage of potential pollutants. All such containers shall be labeled as to the contents and the potential hazard; and
- Personnel will receive appropriate training in the use of environmental cleanup equipment for their area of operations.

9.0 FUEL MANAGEMENT AND SPILL CONTINGENCY PLAN (FMSCP)

This Fuel Management and Spill Contingency Plan (FMSCP) has been developed under the umbrella of “Best Management Practices” and provides emphasis on reducing risks of spills given that fuel will not be stored or transported on-site. Regarding spill contingency, the plan includes mechanisms for initiating and carrying out the required notifications, spill containment, clean-up, and remedial actions.

A main fuel cache will be established proximal to the camp, primarily to store diesel and jet fuel, with smaller quantities of gasoline and propane. Diesel, jet fuel, and gasoline will be stored in the camp fuel cache in either in 205 L steel drums, 4,000 L double walled tanks or a combination of both to a maximum of 87,125 L. A 4,000 L double walled fuel tank will be located at kilometer 58 of the Agnico AWAR and double walled 600 L tank(s) will used to store the diesel at each active drillsite(s). Other hazardous materials found on site may include small quantities of various lubricants/oil/grease for drilling and maintenance of motorized equipment, cleaning products, and waste oil. Fuel caches will include all necessary spill containment mechanisms and spill kits.

Within 30 days of the establishment of any temporary fuel tanks, the appropriate agencies will be notified of the details of the cache including: GPS location, fuel type, container sizes, method of storage and proposed date of removal. The temporary fuel cache GPS locations will also be included in the annual reports submitted to the CIRNAC, NWB and NIRB.

In regard to the spill contingency plan, it was developed in accordance with the BC Guidelines for Industrial Emergency Response Contingency Plans (1992) and abides by the NU Spill Contingency Planning and Reporting Regulations (1993).

Mobile Equipment Refueling:

- Only authorized personnel may operate the dispensers.

Mobile Fueling Procedures:

- Ensure vehicle engine is shut off.
- Ensure no open sources of ignition or smoking within 7.5 m.
- Put fuel nozzle into the fuel tank fill tube.
- Turn on the power for the dispensing pump.
- Do not use any object or device that is not an integral part of the fuel nozzle to maintain the flow of fuel. Report any leaks.
- To the extent possible, observe the fuel piping, dispensing pump, and hose assembly during fuel transfer to determine if there are any leaks present.
- Operator must remain in attendance during fuel dispensing to vehicles.
- Do not overfill the fuel tank.
- When tank is full, shut off the power to the dispensing pump.
- Remove the dispensing nozzle and replace in the holder.

Emergency Response:

- All reasonable steps shall be taken to recover escaped liquid and to remove or treat contaminated soil.
- See above spill prevention and response strategies.

Emergency Procedures:

- Take action only if safe to do so.
- In the event of a spill shut off the fuel nozzle and pump.

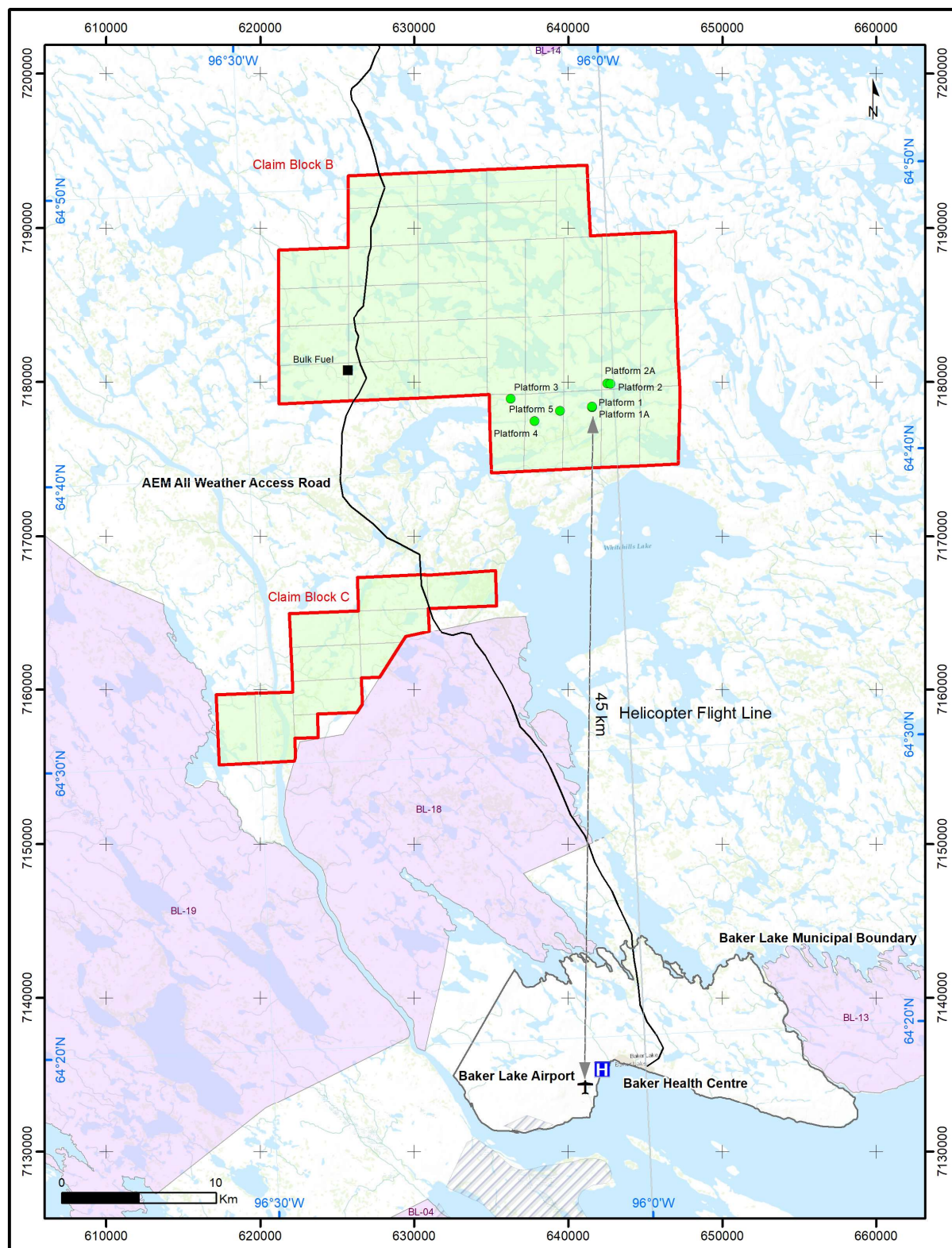
- Contact the *Baker Lake* fire department, if necessary.
- Use spill response equipment such as absorbent materials to control the spill and to collect the spilled fuel.
- Arrange for the collection and disposal of used absorbents.

The operator will immediately contain and remediate any spill of hydrocarbon or other deleterious substances. Any such occurrence will be reported to the Chief Environmental Protection Officer and to the Provincial Emergency Program in accordance with the Spill Reporting Regulation of the **Environmental Protection Act**. Any contaminated materials will be disposed of in a manner acceptable to the Ministry of Environment.

It is expected that emergency spill containment kits will be maintained on-site by the company. A list of required emergency spill equipment is included below.

Suggested Spill Response Equipment for the Meadowbank Precious Metal Property

<i>Meadowbank Precious Metal Property – Spill Kit Guidelines</i>	
<i>Recommended Location of Kit</i>	<i>Minimum Recommended Spill Kit Contents</i>
On all heavy equipment/ at drill sites	<ul style="list-style-type: none"> • Round nose shovel or equivalent • 5 - 18”X18” absorbent pads or equivalent • <i>Heavy Duty plastic garbage bag or equivalent</i>
Fuel Caches and Bulk Tank	<ul style="list-style-type: none"> • Round nose shovel • 10 - 18”X18” absorbent pads or equivalent • 2 – 3”x48” absorbent socks • 1 – small container of bio-remediation agent (i.e. Oil Gator) • 1 – small container of stop leak putty or crystals (i.e. Plug N’ Dyke) • Heavy Duty plastic garbage bag or equivalent • <i>Personal Protective equipment (not part of kit)</i>

10.0 MAP (to print and post)

On Map: Primary Evacuation route will be via helicopter from Baker Lake Airport. Alternatively if flying isn't possible, the property is accessible via the AEM from Baker Lake, though it is 15 km west of the work area, with no mechanical transport available on site.

Emergency situations (rescue, evacuation):

Emergency:	Muster point location:	Procedure to deal with emergency:
Rescue	TBD	<p>If an Emergency Requiring Rescue Occurs in the Field:</p> <ul style="list-style-type: none"> - Institute First Response Protocol - Alert Konstantin Lesnikov to Emergency through Radio/SPOT/sat phone: <ul style="list-style-type: none"> - Call Medic Medic Medic On Radio - Call Emergency Services in Baker Lake - Activate SPOT Emergency Message - Konstantin Lesnikov and Darcy Taylor (Heli Pilot) will Initiate Rescue operations including dispatch of first aid resources
Evacuation	Helicopter Pad	<p>IF EVACUATION IS REQUIRED: <u>Konstantin</u> Lesnikov SHALL DECLARE EVACUATION:</p> <p>All personal shall be informed via radio to report to muster station for a head count.</p> <p>Primary evacuation will be by helicopter.</p>

11.0 FIRST RESPONSE PROTOCOL (to print and post)

FIRST RESPONSE PROTOCOL

5530 Nunavut Inc

Meadowbank Precious Metal Property

print this and post by all camp phones, in First Aid Tent and Office/Project Manager Tent, and inside every SAT phone case

In the event of an **EMERGENCY, contact the First Aid Attendant and/or Project Supervisor immediately:**

OVER THE RADIO: Call “MEDIC MEDIC MEDIC**”**

All radio communications must **STOP except between the Project Supervisor/First Aid Attendant and the emergency scene.**

ON THE PHONE:

Baker Lake Lodge: 1 (867) 793-2905

Worksite: 1 (867) 327-0098

Satellite Phone: 8816 3262 9860

or 8816 3168 2358

**ALL WORK MUST STOP IN
THE EVENT OF AN EMERGENCY**

If instructed by the First Aid Attendant or Project Supervisor:
#1 - Call the relevant service:

MEDICAL	Baker Lake Health Center	<i>1-867-793-2816</i>
RCMP	Baker Lake RCMP	<i>1-867-793-1111</i>
FIRE	Baker Lake Fire Hall	<i>1-867-793-2900</i>
SAR	Baker Lake Search and Rescue	<i>1-867-793-2503</i> <i>1-867-793-4512</i>
Helicopter	Darcy Taylor	<i>1 (778) 325-5193</i>

#2 - Be Prepared to Provide:

1. **Your Name and Location: Location in Lat/Long**
 - a. Worksite **Lat: 64.320302 Long: -96.036234**
 - b. Baker Lake Lodge **Lat: Long:**
2. **Patient location (if not in camp)**
3. **Number of injured persons**
4. **Patient information for each injured person**
 - a) **Condition** Conscious / Unconscious
Nature of Injury
 - b) **Age / Sex of Patient**
 - c) **History** What happened?
When did it happen?
What remedial action has been taken so far?
 - d) **Any other relevant information that you know:**
Medical History (i.e. is diabetic, etc)

REPORT BACK to First Aid Attendant

**Obtain instructions from the Nurse or First Aid Attendant as to the need for a
MEDIVAC**

If Medivac is Required:

1. From the Field:

- a) The First Aid Attendant will go to the emergency scene with the first aid kit.
- b) The patient will be examined and supported while the Hospital is consulted for Medivac instructions.
- c) If instructed by the Nurse, the patient will be transferred directly to the nearest Hospital. If not, the patient will be transferred to the *Baker Lake Lodge* until further instructions are received.
- d) If a Medivac is required, someone from Emergency Services will be dispatched from Baker Lake via helicopter with all necessary equipment, while the First Aid Attendant on site supports the injured person(s) on site.

2. From *Baker Lake Lodge*

- a) The nearest Hospital will be consulted for Medivac instructions.
- b) Unless otherwise directed by the Nurse, the patient will be transported with the First Aid Attendant.
- c) Further Medivac decisions will be made by the Nursing Station.

Primary Medivac Vehicle:

Helicopter

Secondary Medivac Vehicle:

Truck

Where it becomes necessary to evacuate the worksite, the Project Supervisor shall make the decision to initiate a complete evacuation in accordance with the following procedure:

- 1) The decision to initiate a general evacuation of all personnel shall be accepted as a general stop work order, requiring all personnel to cease work immediately.
- 2) Communicate with and advise all field personnel to return to worksite and prepare to evacuate. The time of communication and name of each field crew communications operator must be recorded.
- 3) Should there be any personnel with whom contact cannot be made this must be noted and efforts made to locate and communicate with said personnel.
- 4) Notify the appropriate air service provider of the requirement for full evacuation with provision of the number of personnel involved.
- 5) Have all personnel congregate at a predetermined marshalling point. Depending upon the reason for evacuation and weather conditions, this may either be in the field, near the helipad or at the drill.
- 6) Notify the appropriate authorities (RCMP and Health Centre) in *Baker Lake* or wherever the evacuation destination is.
- 7) Should the evacuation require multiple flights ensure that each group of personnel has a designated supervisor with a satellite phone and sufficient survival gear. As the situation would not be considered a typical demobilization, personnel should not attempt to remove personal articles from camp, in consideration of evacuating the maximum number of people at the earliest opportunity.
- 8) All personnel should have clothing appropriate to the weather conditions.
- 9) Where possible, and if practical, all generators, stoves and gas cylinders should be shut off prior to departure.

12.0 CONTACT LIST (to print and post)

CAMP CONTACTS	
<i>Konstantin Lesnikov</i>	<i>1 (867) 327-0098</i>
<i>FA - Konstantin Lesnikov</i>	<i>1 (867) 327-0098</i>
<i>Keven Perot Servant</i>	<i>1 (891) 471 7571</i>
<i>SAT phone number</i>	<i>8816 3168 2358</i>
<i>Baker Lake Lodge</i>	<i>1 (867) 793-2905</i>
<i>Adjoining Camps:</i>	<i>Contact info – phone and location</i>
MEDICAL EMERGENCY CONTACTS	
HOSPITAL	
<i>Baker Lake Health Center</i>	<i>1-867-793-2816</i>
<i>Kivalliq Heath Center</i>	<i>1-867-645-8300</i>
RCMP	
<i>Baker Lake RCMP</i> <i>Baker Lake, Nu, X0C 0A0</i>	<i>1-867-793-1111 emergency</i> <i>1-867-793-0123 non-emergency</i>
SEARCH & RESCUE	
<i>Baker Lake Search and Rescue</i>	<i>1-867-793-2503 or 1-867-793-4512</i>
<i>Search and Rescue Nunavut Emergency Line</i>	<i>1-800-693-1666</i>
FIRE DEPARTMENT	
<i>Baker Lake Fire Hall</i>	<i>1-867-793-2900</i>
POISON CONTROL	<i>1-800-268-9017</i>
Emergency Measures 24 Hour TOLL FREE:	<i>1-800-693-1666</i>
Emergency Services Response 24 Hours:	<i>1-867-979-6262</i>
<i>Chief Inspector of Mines – Cary Ingram</i>	<i>1-867-920-3805</i>
<i>Senior OHS Inspector – Sheena Jensen</i>	<i>1-867-920-3849</i>
<i>24 Hour Hotline for Serious Accidents</i>	<i>1-800-661-0792</i>
ENVIRONMENTAL	
<i>Government of Nunavut – General Inquiries</i>	<i>1-877-212-6438</i>
<i>Department of Economic Development and Transportation – Kivalliq</i>	<i>1-844-737-8627</i>
<i>Weather – Environment Canada</i>	https://weather.gc.ca/
<i>Wildlife Office (Baker Lake)</i>	<i>1-867-793-2944</i>
<i>Department of Environment - General Inquiries</i>	<i>1-867-975-7700</i>
<i>WSCC - Report a Claim</i>	<i>1-800-661-0792</i>

<i>WSCC - Iqaluit</i>	reportsnu@wscc.nu.ca
<i>Spills and Environmental Emergencies</i>	1-867-920-8130
EMERGENCY REPORTING AND SUPPORT	
<i>Chief Inspector of Mines – Cary Ingram</i>	1-867-920-3805
<i>Senior OHS Inspector – Sheena Jensen</i>	1-867-920-3849
<i>WSCC- Emergency and accident reporting Claims Mailing Address (Employers): Box 669, Iqaluit, NU X0A 0H0</i>	1-800-661-0792 reportsnu@wscc.nu.ca
<i>Emergency Management – Nunavut</i>	1-800-693-1666
<i>Mental Health Nurse – Baker Lake</i>	1-867-793-2816
<i>Mental Health Outreach – Baker Lake</i>	1-867-793-2085
TRANSPORTATION	
<i>Helicopter Transport Services (HTCS)</i>	1 (613) 295-2897
<i>Air Ambulance</i>	1-867-793-2816 (Health Centre)
<i>Department of Economic Development and Transportation – Kivalliq</i>	1-844-737-8627
SPILLS AND DISASTER CONTACTS	
<i>Provincial Emergency Program (Spills)</i>	1-867-920-8130
<i>Environment Canada (Emergency Reports)</i>	1-604-666-6100
COMPANY CONTACT	
<i>APEX Geoscience Ltd.</i> <i>C. Edmonton, Canada</i> #100, 11450 160 St NW, Edmonton, AB, T5M 3Y7 Canada <i>D. Vancouver, Canada</i> 410-800 W. Pender St. Vancouver, BC V6C 2V6 Canada	<i>C. Tel: 1 (780) 467-3532</i> <i>D. Tel: 1 (604) 696-9628</i>
<i>5530 Nunavut Inc.</i> <i>(subsidiary of Western Atlas Resources Inc.)</i> 666 Burrard Street, Suite 1700, Park Place Vancouver, BC V6C 2X8	<i>Tel: 1 (604) 256 4777</i> <i>Tel: 1 (778) 389-7274</i> <i>www.westernar.com</i>

13.0 5530 Nunavut Inc - Meadowbank Precious Metal Property ERP RECORD (to print and sign)

Mine Emergency Response Plan RECORD

	Yes	No
Do you know where to find and use emergency equipment on site?		
Do you know your specific role during an emergency?		
Do you know where this ERP and the First Response Protocol can be found on site?		
Do you know where to find contact information and communication devices?		
Do you know how to use the communication devices?		
Do you know who the designated First Aid Attendant is and where they are located?		
Do your first aid supplies, attendants and facilities meet legislated requirements?		
Have you read and understood the entirety of this emergency response plan?		

Project Supervisor or Crew Leader confirming *5530 Nunavut Inc - Meadowbank Precious Metal Property* ERP:

Name: _____

Signature: _____

Date: _____

Worker confirming they have read and understood the *5530 Nunavut Inc - Meadowbank Precious Metal Property* ERP:

Name: _____

Signature: _____

Date: _____