


# 2021 ANNUAL LAND USE REPORT

## MEADOWBANK PRECIOUS AND BASE METAL PROPERTY NUNAVUT, CANADA

Prepared for:  
**Western Atlas Resources Inc./**  
**5530 Nunavut Inc.**  
Suite 1700, 666 Burrard Street  
Vancouver, BC V6C 2X8

Prepared by:  
  
100, 11450 160 Street NW  
Edmonton, AB T5M 3Y7

## Contents

1	Project Location and Description .....	3
2	Land and Water Use Authorizations .....	3
3	Work Completed on the Property to Date .....	3
4	Work Completed on the Property in 2021 .....	5
4.1	Infrastructure .....	5
4.2	Fuel Caches .....	5
4.3	Water Use .....	5
4.4	Wildlife Sightings .....	5
4.5	Reclamation .....	5
4.6	Spills.....	5
4.7	Archaeological and Palaeontological Resources.....	5
4.8	Environmental Studies .....	5
4.9	Northern Hires/Contracts.....	5
5	Proposed 2022 Exploration Program .....	6

## Figures

Figure 1.1	Meadowbank Precious and Base Metal Project Location .....	4
Figure 5.1	Meadowbank Precious and Base Metal Project 2022 Work Plan.....	7

## Tables

Table 2.1	Meadowbank Precious and Base Metal Project Land and Water Use Authorizations .....	3
Table 4.1	Meadowbank Precious and Base Metal Project 2021 Contracted Northern Businesses and Local Hires .....	6

## Appendices

Appendix 1 – 2021 LAND TENURE .....	8
-------------------------------------	---

## 1 Project Location and Description

The Meadowbank Precious and Base Metal Project (the “Project”) is located in the eastern part of the District of Kivalliq, Nunavut Territory, within 1:50,000 scale National Topographic System (“NTS”) map sheets 56D12 (Whitehills Lake) and 13 (Tehek Lake), 66A09 (Halfway Hills), 10 (Ayaktuukvik Lake) and 16 (Amarulik Lake) and 66H01 (unnamed) and 08 (unnamed). The Project consists of three non-contiguous claim blocks (Black A, B and C) located on Crown Lands, approximately 50 km north of the community of Baker Lake (Qamani'tuaq) and 280 km northwest of the community of Rankin Inlet (Kangiqliniq; Figure 1.1). The mineral claims are all 100% owned by 5530 Nunavut Inc, a wholly owned subsidiary of Western Atlas Resources Inc.

All claim blocks comprising the Project are accessible by the Agnico Eagle Mines Limited (“Agnico”) All Weather Access Road (“AWAR”) linking Baker Lake to Agnico’s Eagle’s Meadowbank and Amaruq mines. Permission is required from Agnico to use the AWAR.

## 2 Land and Water Use Authorizations

All land and water use authorizations are in the name of 5530 Nunavut Inc., a wholly owned subsidiary of Western Atlas Resources.

Table 2.1 details the land and water use authorizations associated with the Meadowbank Precious and Base Metal Project.

Table 2.1 Meadowbank Precious and Base Metal Project Land and Water Use Authorizations

<u>Organization</u>	<u>Authorization</u>	<u>Authorization Number</u>	<u>Expiration Date</u>
Nunavut Planning Commission (“NPC”)	Conformity Determination	148482	N/A
Nunavut Impact Review Board (NIRB)	Screening Decision	17EN020	N/A
Indigenous and Northern Affairs Canada (“INAC”)	Land Use Permit	N2017C0005	March 7, 2022
Nunavut Water Board (“NWB”)	Water Licence	2BE-MPM2126	December 31, 2026

## 3 Work Completed on the Property to Date

Exploration activities on the Meadowbank Precious Metal Property to date include: helicopter-borne, versatile time domain electromagnetic (“VTEM”) surveys, ground induced polarization (“IP”) surveys, geological mapping, prospecting and rock geochemical sampling in 2018; a Property visit and geological reconnaissance program in 2019, diamond drilling of 13 holes from 7 platforms in 2020 and additional detailed logging and full sampling program between 2020 and 2021. During the 2020 drilling program, on the request of Agnico, the AWAR was used by Agnico Eagle’s Energy and Infrastructure team to refuel an Orbit Garant fuel storage container located at Kilometer 58 in order to assist in reduction in the amount of helicopter flights required to refuel.

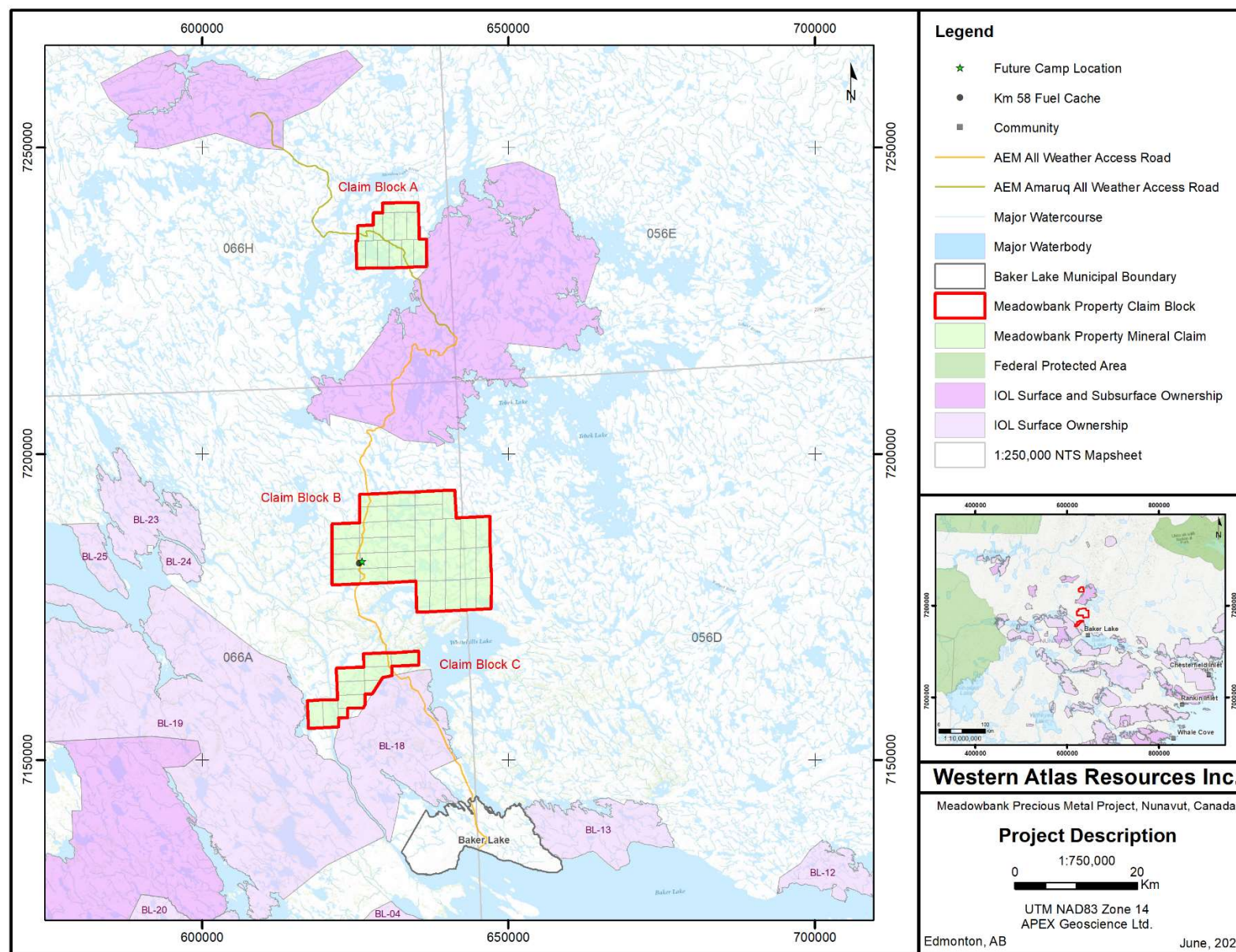


Figure 1.1 Meadowbank Precious and Base Metal Project Location

## **4 Work Completed on the Property in 2021**

A detailed logging and sampling of the drillcore from the 2020 drill program was conducted in the summer of 2021. The logging and sampling program was based in Baker Lake. No fieldwork was completed on the Property in 2021.

### **4.1 Infrastructure**

Although a 10-person temporary camp with fuel cache was originally permitted at the project, the 2018, 2019 and 2020 programs were based out of Baker Lake. In 2021 amendments to the CINAC LUP and NWB Water Licence to increase in the size of the permitted seasonal camp to 20-person (with the capacity to expand to 40-person) were approved. The approved camp location is adjacent to the AWAR kilometer 58 staging area.

### **4.2 Fuel Caches**

No fuel caches were established in 2021.

### **4.3 Water Use**

As no work was completed at the Project in 2021, no water was used.

### **4.4 Wildlife Sightings**

As no work was completed at the Project in 2021, no wildlife sightings were recorded.

### **4.5 Reclamation**

No reclamation was completed on the Project in 2021.

### **4.6 Spills**

No spills occurred on the Project in 2021.

### **4.7 Archaeological and Palaeontological Resources**

No reclamation was completed on the Project in 2021.

### **4.8 Environmental Studies**

No environmental studies were completed on the Project in 2021.

### **4.9 Northern Hires/Contracts**

Table 4.1 lists the Northern hires and business utilized for the detailed logging and sampling program in 2021.



**Table 4.1 Meadowbank Precious and Base Metal Project 2021 Contracted Northern Businesses and Local Hires**

<b>Business</b>	<b>Local Hire</b>
Artic Fuel	Danny Elytook
Baker Lake Contracting and Supplies	Elijah Jr Amarook
Baker Lake Hunters and Trappers Association	Kirk Mautaritnaaq
Baker Lake Lodge	Matthew Paungrat
Baker Lake Municipal Office	Matthew Uqayuittuq
Calm Air	Patrick Perkison
Calm Air Cargo	Riel Anautalik
Canada Post (Baker Lake)	Sammy Oosuaq
Denroche & Associates	
Hamlet of Baker Lake	
Northern Store (Baker Lake)	
Sanavik Coop (Baker Lake)	
SK Construction	

## **5 Proposed 2022 Exploration Program**

Planning of the 2022 exploration program is currently in progress. The 2017 and 2018 geological mapping, geochemical sampling, helicopter-borne VTEM geophysical and ground IP surveys, in conjunction with the interpretation of the 2017 high-resolution aeromagnetic survey data resulted in the identification of a number of targets of which only one has been partially drill tested. The majority of the targets so far identified have yet to be drill tested.

With regard to the 2022 field program, a number of the remaining identified drill targets within Block B and A (Figure 5.1) are anticipated to be drill tested. Additionally, the 2022 field program is anticipated to include ground geological and IP surveys to be conducted over prospective areas within Blocks A, B and C in order to aid in the definition of additional drill targets.

When definitive programs and dates have been finalized all the regulatory agencies will be supplied with updated schedules.

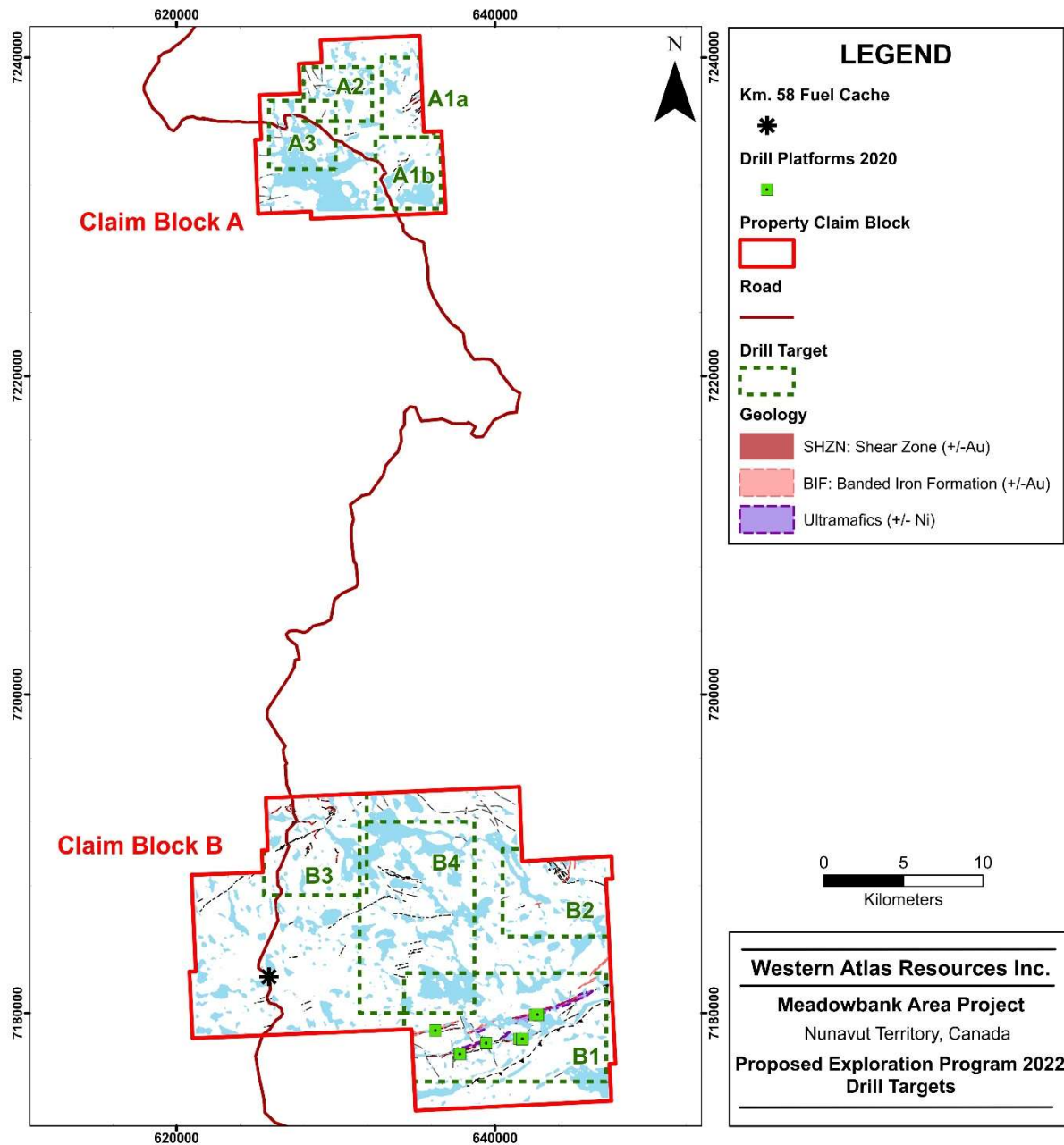


Figure 5.1 Meadowbank Precious and Base Metal Project 2022 Work Plan

## Appendix 1 – 2021 LAND TENURE

Claim Number	Claim Name	Issue Date	Anniversary Date	Owners	Area (ha)
101482	CW 35	2021-02-16	2029-02-16	5530 Nunavut Inc. (100%)	1227.760
101483	CW 36	2021-02-16	2029-02-16	5530 Nunavut Inc. (100%)	1403.105
101484	CW 37	2021-02-16	2029-02-16	5530 Nunavut Inc. (100%)	1385.744
101485	CW 38	2021-02-16	2029-02-16	5530 Nunavut Inc. (100%)	1368.511
101486	CW 39	2021-02-16	2029-02-16	5530 Nunavut Inc. (100%)	1331.456
101487	CW 40	2021-02-16	2029-02-16	5530 Nunavut Inc. (100%)	1294.744
101488	CW 41	2021-02-16	2029-02-16	5530 Nunavut Inc. (100%)	1139.450
101489	CW 42	2021-02-16	2029-02-16	5530 Nunavut Inc. (100%)	1262.270
101490	CW 43	2021-02-16	2029-02-16	5530 Nunavut Inc. (100%)	1420.405
101491	CW 49	2021-02-16	2027-02-16	5530 Nunavut Inc. (100%)	1234.800
101492	CW 53	2021-02-16	2025-02-16	5530 Nunavut Inc. (100%)	1044.360
101493	CW 34	2021-02-16	2026-02-16	5530 Nunavut Inc. (100%)	1053.100
101494	CW 44	2021-02-16	2029-02-16	5530 Nunavut Inc. (100%)	1403.089
101495	CW 45	2021-02-16	2029-02-16	5530 Nunavut Inc. (100%)	1210.470
101496	CW 46	2021-02-16	2029-02-16	5530 Nunavut Inc. (100%)	1070.359
101497	CW 47	2021-02-16	2029-02-16	5530 Nunavut Inc. (100%)	1286.138
101498	CW 48	2021-02-16	2027-02-16	5530 Nunavut Inc. (100%)	1007.966
101499	CW 50	2021-02-16	2026-02-16	5530 Nunavut Inc. (100%)	609.184
101500	CW 51	2021-02-16	2025-02-16	5530 Nunavut Inc. (100%)	261.449
101501	CW 52	2021-02-16	2024-02-16	5530 Nunavut Inc. (100%)	1114.836
101502	CW 54	2021-02-16	2025-02-16	5530 Nunavut Inc. (100%)	1252.176
101503	CW 55	2021-02-16	2023-02-16	5530 Nunavut Inc. (100%)	1132.835
101504	CW 56	2021-02-16	2023-02-16	5530 Nunavut Inc. (100%)	1533.632
101840	CW 2	2022-01-19	2025-01-19	5530 Nunavut Inc. (100%)	713.146
101841	CW 7	2022-01-19	2026-01-19	5530 Nunavut Inc. (100%)	797.838
101842	CW 11	2022-01-19	2029-01-19	5530 Nunavut Inc. (100%)	1001.492
101843	CW 15	2022-01-19	2028-01-19	5530 Nunavut Inc. (100%)	1122.745
101844	CW 17	2022-01-19	2029-01-19	5530 Nunavut Inc. (100%)	1119.950
101845	CW 25	2022-01-19	2029-01-19	5530 Nunavut Inc. (100%)	1122.745
101846	CW 26	2022-01-19	2029-01-19	5530 Nunavut Inc. (100%)	1346.152
101847	CW 27	2022-01-19	2028-01-19	5530 Nunavut Inc. (100%)	1241.448
101848	CW 28	2022-01-19	2027-01-19	5530 Nunavut Inc. (100%)	826.992
101849	CW 29	2022-01-19	2027-01-19	5530 Nunavut Inc. (100%)	947.672
101850	CW 30	2022-01-19	2026-01-19	5530 Nunavut Inc. (100%)	948.398
101851	CW 31	2022-01-19	2029-01-19	5530 Nunavut Inc. (100%)	1294.899
101852	CW 33	2022-01-19	2027-01-19	5530 Nunavut Inc. (100%)	1206.590
101915	CW 3	2022-01-19	2029-01-19	5530 Nunavut Inc. (100%)	1068.345



101916	CW 4	2022-01-19	2025-01-19	5530 Nunavut Inc. (100%)	678.972
101917	CW 5	2022-01-19	2026-01-19	5530 Nunavut Inc. (100%)	850.050
101918	CW 6	2022-01-19	2026-01-19	5530 Nunavut Inc. (100%)	1020.102
101919	CW 8	2022-01-19	2028-01-19	5530 Nunavut Inc. (100%)	882.753
101920	CW 10	2022-01-19	2029-01-19	5530 Nunavut Inc. (100%)	1020.102
101921	CW 20	2022-01-19	2026-01-19	5530 Nunavut Inc. (100%)	759.957
101922	CW 22	2022-01-19	2029-01-19	5530 Nunavut Inc. (100%)	1211.092
101923	CW 23	2022-01-19	2029-01-19	5530 Nunavut Inc. (100%)	1090.045
101941	CW 24	2022-01-19	2029-01-19	5530 Nunavut Inc. (100%)	1348.438
101942	CW 32	2022-01-19	2029-01-19	5530 Nunavut Inc. (100%)	1124.025
101981	CW 1	2022-01-19	2025-01-19	5530 Nunavut Inc. (100%)	680.040
101982	CW 9	2022-01-19	2029-01-19	5530 Nunavut Inc. (100%)	1037.184
101983	CW 12	2022-01-19	2029-01-19	5530 Nunavut Inc. (100%)	1224.210
101984	CW 13	2022-01-19	2029-01-19	5530 Nunavut Inc. (100%)	1384.069
101985	CW 14	2022-01-19	2026-01-19	5530 Nunavut Inc. (100%)	1089.051
101986	CW 16	2022-01-19	2028-01-19	5530 Nunavut Inc. (100%)	1259.851
101987	CW 18	2022-01-19	2029-01-19	5530 Nunavut Inc. (100%)	1414.074
101988	CW 19	2022-01-19	2028-01-19	5530 Nunavut Inc. (100%)	1018.311
101989	CW 21	2022-01-19	2027-01-19	5530 Nunavut Inc. (100%)	1227.242
<b>Total Area:</b>					<b>62125.819</b>