

***ANCONIA RESOURCES CORPORATION
SPILL CONTINGENCY PLAN***

MARCE PROJECT, NUNAVUT

Date: Jan 10, 2012

TABLE OF CONTENTS

Page

1. INTRODUCTION	1
1.1 Corporate Details.....	1
1.2 Term of Spill Contingency Plan.....	1
1.3 Purpose and Scope	1
1.4 Anconia Resources Corp. Environmental Policy	1
2. PROJECT AND SITE DESCRIPTION	2
2.1 Project Description.....	2
2.2 Current Permits/Licences.....	2
2.3 List of Hazardous Materials On-Site	2
2.4 Petroleum and Chemical Product Storage and Transport	3
2.5 Petroleum Product Transfer.....	3
2.6 Equipment	4
2.7 Existing Preventative Measures.....	4
2.8 Copies of Spill Contingency Plan	4
3. RESPONSE ORGANIZATION	5
3.1 Spill Response Team.....	6
4. REPORTING PROCEDURE	
5. ACTION PLANS	
5.1 Initial Action	
5.2 Spill Response Actions – Diesel Fuel, Hydraulic Oil and Lubricating Oil	
5.3 Spill Response Actions – Gasoline and Jet B Aviation Fuel.....	
5.4 Spill Response Actions – Propane.....	
6. PROCEDURES FOR TRANSFERRING, STORING, AND MANAGING SPILL-RELATED WASTES	
7. PROCEDURES FOR RESTORING AFFECTED AREAS	
8. TRAINING	

LIST OF TABLES

Table 1	List of hazardous materials stored on-site, type of storage container,.....	3
	the storage quantities, and storage locations where known	
Table 2	Emergency Contacts	

LIST OF APPENDICES

Appendix 1	NT/NU Spill Report Form and Instructions
Appendix 2	Maps of Property and Camp
Appendix 3	MSDS Sheets

1. INTRODUCTION

This Spill Contingency Plan has been prepared specifically for the Marce Project (NTS 55 L11/12) operated by Anconia Resources Corporation. (“Anconia”). The plan demonstrates that Anconia Resources Corp. will have appropriate response capabilities and measures in place to effectively address potential spills at its Marce Project site.

1.1 Corporate Details

Anconia Resources Corporation
Suite 200, 65 Front Street E
Toronto, ON M5E 1B5

Attention: Jason Brewster, President

1.2 Term of Spill Contingency Plan

This Spill Contingency Plan shall be in effect from date of acceptance of applicable land use permits. Any future changes and/or amendments will be submitted to the Nunavut Water Board, AANDC and the Kivalliq Inuit Association.

1.3 Purpose and Scope

The purpose of this Spill Contingency Plan is to provide a plan of action for all spills of hazardous materials that may occur on the Marce Project, NU. This plan identifies key response personnel and their roles and responsibilities in the event of a spill, as well as the equipment and other resources available to respond to a spill. It details spill response procedures that will minimize potential health and safety hazards, environmental damage, and clean-up efforts. The plan has been prepared to ensure quick access to all information required in responding to a spill.

1.4 Anconia Resources Corporation Environmental Policy

It is the policy of Anconia Resources Corporation to comply with all existing laws and regulations to help ensure the protection of the environment. Anconia Resources Corporation cooperates with other groups committed to protecting the environment and ensures that employees, contractors, government, and the public is informed on the procedures followed to help protect the environment.

Anconia Resources Corporation endeavours to take every reasonable precaution toward ensuring the protection and conservation of the natural environment and the safety and health of all employees and contractors from any potential harmful effects of stored materials and operations.

The plan is presented to all staff and contractors during their on-site orientation sessions. All employees and contractors are aware of the locations of the plan on site at the Marce Project and in Anconia Resources Corporation’s offices.

During the orientation meeting, training sessions are scheduled to ensure employees and contractors have an understanding of the steps to be undertaken in the event of a spill. All employees and contractors are shown where spill kits are stored, are aware of their contents and are trained in using spill equipment and responding to spills. The company is committed to keeping personnel up to date on the latest technologies and spill response methods.

2. PROJECT AND SITE DESCRIPTION

2.1 Project Description

This Project is in the Kivalliq Region of Nunavut, 190 kilometers south of Baker Lake and 180 kilometers west of Rankin Inlet. The project consists of both Inuit-Owned Lands (surface rights) and mineral claims on Crown Lands. Year-round access to the property is via fixed wing aircraft, equipped with skis or floats, or helicopter. The property is bounded in a general sense by the following minimum and maximum latitudes/longitudes:

Min Lat (degree/minute)	<u>62 31'</u>	Min Long (degree/minute)	<u>95 58'</u>
Max Lat (degree/minute)	<u>62 40'</u>	Max Long (degree/minute)	<u>95 23'</u>

A temporary exploration camp suitable for up to 15 personnel will be constructed at 62° 33' 57.3" N and - 95° 53' 46.3" W. approximately on Inuit Owned Land (see attached figure). The camp would include 6 sleeping tents, combination cooks tent/first aid station, kitchen, dry, office, core shack, outhouse, generator shack, and a fuel cache. Specifics of the final layout will be dependant upon the topographic conditions encountered during camp construction. A layout plan would be forwarded after camp construction.

Maps illustrating the regional context of the property and the project area are located in Appendix 2.

2.2 Current Permits/Licences

Permit/License No.	Regulatory Body	Type	Expiry
	Nunavut Water Board	Water License Type B	Application Review in Progress
KVL311C03	Kivalliq Inuit Association	Land Use Permit	
	NPC	Conformity analysis completed	
	AANDC	Land Use Permit	Application review in Progress

2.3 List of Hazardous Materials On-site

Fuel storage areas at the Marce project will include the main storage site adjacent to the camp helicopter landing pad; in addition small fuel caches will be located adjacent to active drill sites when drilling is underway. All containers of hazardous materials will be marked with Anconia's name.

Petroleum products and hazardous materials that will be considered in this Spill Contingency Plan include:

- Diesel fuel
- Hydraulic oil
- Lubricating oil

- Gasoline
- Jet “B” fuel
- Antifreeze
- Propane

The drilling company will employ various drilling muds and grease during the drilling operations. This information is included in Appendix 3 (MSDS Sheets).

Table 1 presents a list of hazardous materials anticipated to be located at the Marce Project, the type of storage container, the maximum quantities stored, and the general location.

Table 1: List of hazardous materials stored on-site, type of storage container, the storage quantities, and storage locations where known

Material	Storage Container	Maximum on-site	Storage Location and Uses
Diesel fuel	205 litre drums	80 (16,400 litres)	One drum to be located at each tent for heating, one at the generator, two drums at active drilling sites, remainder at camp fuel cache
Jet B fuel	205 litre drums	60 (12,300 litres)	Two drums at each active drilling site, remainder at camp fuel cache
Propane	45 kg cylinders	6 (270 kg)	Two cylinders each to be located at kitchen (heating/cooking) and dry (heating); remainder at camp fuel cache
Gasoline	205 litre drums	4 (820 litres)	Camp fuel cache
Oil (Engine and 2 stroke)	1 litre container	Several cases (24 litres/case)	Generator shed, active drilling sites

2.4 Petroleum and Chemical Product Storage and Transport

All fuel will be stored no closer than the regulated distance from the normal high water mark of any water body (>30 metres). The main fuel cache will be located at the Marce Project camp.

Other petroleum-based materials found on-site in very small quantities will be located in the drill shack. These include lubricants/oil/grease for the maintenance of the drilling equipment. The drill shack will be located over 30 metres from the normal high water mark of any water body.

All fuel, oil and any chemicals are transported to site by plane and/or helicopter and to any drill sites by helicopter.

2.5 Petroleum Product Transfer

Manual and automatic pumps (and aviation fuel filters for jet fuel) are used for the transfer of all petroleum products. Smoking, sparks, or open flames are **prohibited** in fuel storage and fuelling areas at all times. Portable drip trays and appropriately sized fuel transfer hoses with pumps are used when refuelling aircraft or other equipment, to avoid any leaks/drips onto the land.

2.6 Camp/Exploration Equipment Maintenance

All maintenance work required for camp or exploration equipment will utilize special procedures including the use of portable drip pans to manage motor fluids and other waste in an effort to contain potential spills.

2.7 Spill Containment Equipment

Equipment available on site to assist in responding to a hazardous materials spill includes various hand held tools including shovels. In addition to these, one spill kit will be situated at each active drill site with additional spill kits located at the Marce Project camp fuel cache and on the helicopter.

Spill kits are located wherever fuel is stored or used. The typical spill kit has a sorbent capacity of 240 litres and the contents include:

- 1 – 360 litre/79 gallon polyethylene over pack drum
- 4 – oil sorbent booms (5" X 10')
- 100 – oil sorbent sheets (16.5" X 20" X 3/8")
- 1 – drain cover (36" X 36" X 1/16")
- 1 – *Caution* tape (3" X 500')
- 1 – 1 lb plugging compound
- 2 – pair Nitrile gloves
- 2 – pair Safety goggles
- 2 – pair Tyvel coveralls
- 1 – instruction booklet
- 10 – printed disposable bags (24" X 48")
- 1 – empty fuel drum

2.8 Existing Preventative Measures

Planning for an emergency situation is imperative, due to the nature of the materials stored on site as well as the remoteness of the site. Along with the preventative measures outlined below, adequate training of staff and contractors is paramount.

All hazardous materials arrive by air as needed throughout periods of active exploration. They are unloaded by airplane and helicopter pilots and Anconia's staff and contractors and carefully placed in the fuel storage and hazardous materials storage areas.

The designated fuel monitor conducts daily visual inspections to check for leaks or damage to the fuel storage containers, as well as for stained or discoloured soils/snow around the fuel storage

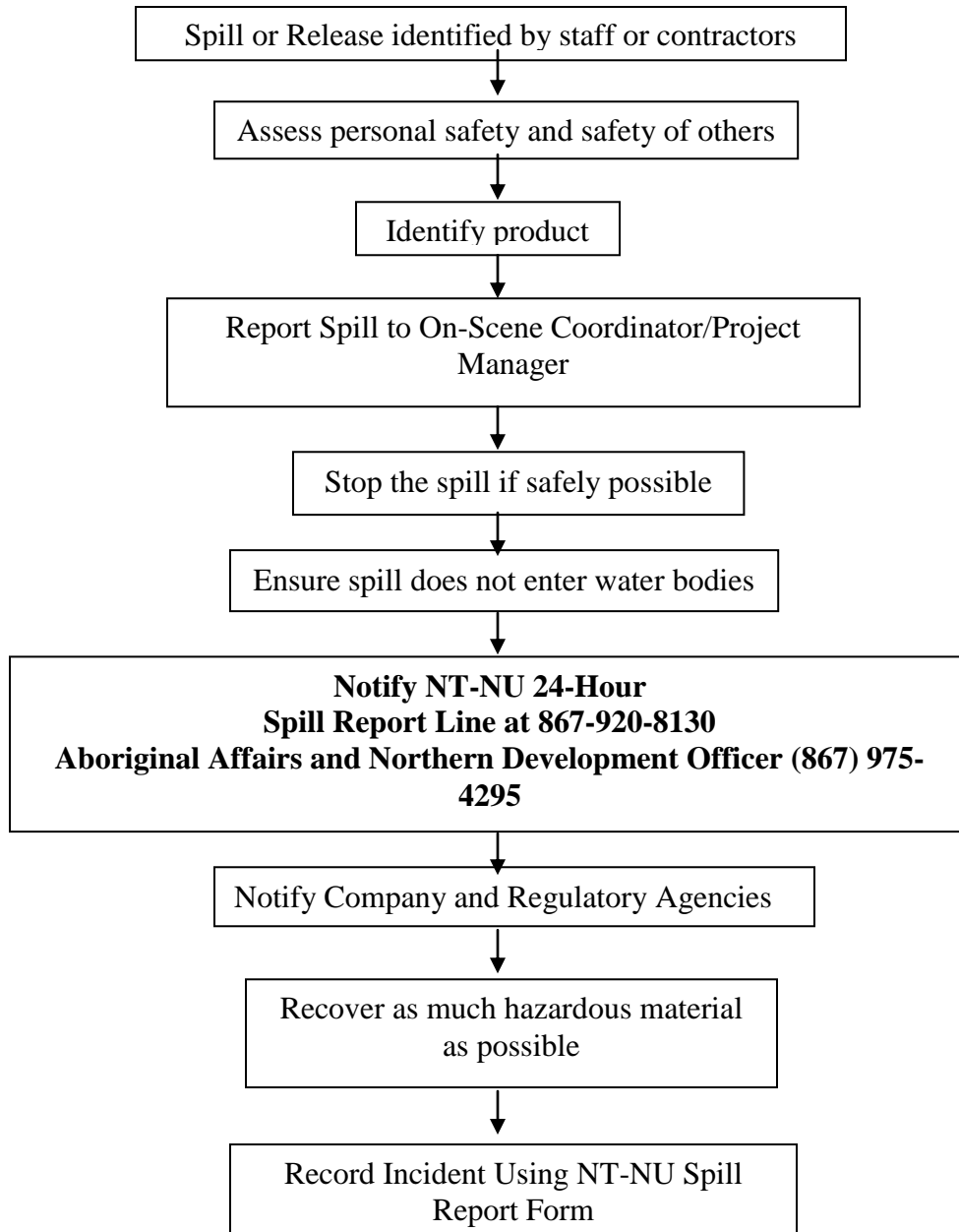
areas and adjacent equipment. For example, lids/caps are checked for tight seals. A checklist is used to ensure no areas are missed.

2.9 Copies of Spill Contingency Plan

Several copies of the plan are kept on-site at all times at the Marce Project camp, the camp fuel cache and at any drill shacks during active drilling periods. As well a copy will also be located at Anconia's offices.

3. RESPONSE ORGANIZATION

The following is a flow chart to illustrate the sequence of events in the event of a hazardous material spill occurring at the Marce Project.



3.1 Spill Response Team

XXXXX will be the On-Scene Coordinator for the Marce Project and will appoint and train appropriate personnel to make up the Marce Project Spill Response Team for the Marce Project. The key personnel that make up the Marce Project Spill Response Team are as follows:

On-Scene Coordinator: to be determined
Project Manager Jason Brewster, President, Anconia Resources Corporation

In addition to the On-Scene Coordinator and the Project Manager, approximately 4 to 16 personnel are available on site to assist in spill response and cleanup activities. The number of personnel on site varies based on the specific exploration activities being conducted at any one time throughout the year.

The responsibilities of the On-Scene Coordinator are as follows:

1. Assume complete authority over the spill scene and coordinate all personnel involved.
2. Evaluate spill situation and develop overall plan of action.
3. Activate the spill contingency plan
4. Immediately report the spill to:
NT-NU 24-Hour Spill Report Line (867) 920-8130
Aboriginal Affairs and Northern Development Canada Inspector (867) 975-4295
Other regulatory agencies and Anconia Resources Corporation management (see *Table 2 – Emergency Contacts*).
5. Obtain additional manpower, equipment, and material if not available on site for spill response.

The responsibilities of the Project Manager are as follows:

1. Provide regulatory agencies and Anconia management with information regarding the status of the cleanup activities.
2. Act as a spokesperson on behalf of Anconia with regulatory agencies as well as the public and media.
3. Prepare and submit a report on the spill incident to regulatory agencies (including the AANDC Inspector) within 30 days of the event.

4. REPORTING PROCEDURE

The On-Scene Coordinator must be notified immediately of any spill either by phone, radio, or in person.

The following is the spill reporting procedure:

1. Report immediately to the NT-NU 24-Hour Spill Report Line (867) 920-8130
Aboriginal Affairs and Northern Development Canada Inspector (867) 975-4295
And other regulatory agencies, and Anconia management
(see *Table 2 – Emergency Contacts*)
2. Complete the NT-NU Spill Report Form and fax the report to the NT-NU 24-Hour Spill Report Line fax (867) 873-6924.

Table 2 – Emergency Contacts

CONTACT	TELEPHONE NUMBER
AANDC - Land Use Inspector	(867) 975-4295
Anconia Resources Corporation – Jason Brewster =President	(416) 815-9777 (Office); (416-815-1355) (Fax) (416) 618-2178 (24 hour)
Environment Canada 24 hour Duty Officer	(867) 766-3737, (867) 873-8185 (Fax)
INAC – Water Resource Officers, Rankin Inlet and Iqaluit, NU	Rankin Inlet (867) 645-2831 Iqaluit (867) 975-4298
Kivalliq Inuit Association	(867) 645-5725
Nunavut Tunngavik Inc., Cambridge Bay	(867) 983-2517
Air Tindi	(867) 669-8212
Trinity Helicopters	(867) 446-3599
Rankin Inlet Fire Department	(867) 645-2525
RCMP, Rankin Inlet	(867) 645-1111
Health Centre – Rankin Inlet	(867) 645-8300
Discovery Mining Services	(867) 920-4600
On-Site Project Geologist	<i>Information to be supplied once phone system is established on the property</i>
Fisheries and Oceans	(867) 979-8007
Nunavut Department of Environment	(867) 975-7700
Robert Eno, Nunavut Department of Environment, Waste Manifests	(867) 975-7748
Manager, Pollution Control and Air Quality, Environmental Protection, Govt of Nunavut	(867) 975-7748; (867) 975-7739 (Fax)

5. ACTION PLANS

5.1 Initial Action

The instructions to be followed by the first person on the spill scene are as follows:

1. Always be alert and consider your safety first.
2. If possible, identify the material that has been spilled. If you are not sure of the material, use caution and consider your safety first.
3. Assess the hazard of people in the vicinity of the spill.
4. If possible, safely try to stop the flow of material to minimize potential for environmental impacts.
5. Immediately report the spill to the On Scene Coordinator.
6. Resume any effective action to contain, mitigate, or terminate the flow of the spilled material.

The following pages include specific instructions to be followed in the response to various types of spills including diesel fuel, hydraulic oil, lubricating oil, gasoline, aviation fuel (Jet “B”), antifreeze, and propane.

5.2 SPILL RESPONSE ACTIONS DIESEL FUEL, HYDRAULIC OIL, AND LUBRICATING OIL

Take action only if safety permits – stop the source flow if safe to do so and eliminate all ignition sources.

Never smoke when dealing with these types of spills.

On Land

Build a containment berm using soil material or snow and place a plastic tarp at the foot of the berm for easy capture of the spill after all vapours have dissipated.

Remove the spill by using absorbent pads or excavating the soil, gravel or snow.

Remove spill splashed on vegetation using particulate absorbent material.

On Muskeg

Do not deploy personnel and equipment on marsh or vegetation.

Remove pooled oil with sorbent pads and/or skimmer.

Flush with low pressure water to herd oil to collection point.

Burn only in localized areas, e.g., trenches, piles or windrows.

Do not burn if root systems can be damaged (low water table).

Minimize damage caused by equipment and excavation.

On Water

Contain spill as close to release point as possible.

Use containment boom to capture spill for recovery after vapours have dissipated.

Use absorbent pads to capture small spills.

Use skimmer for larger spills.

On Ice and Snow

Build a containment berm around spill using snow.

Remove spill using absorbent pads or particulate sorbent material.

The contaminated ice and snow must be scraped and shovelled into plastic buckets with lids, 205 litre drums, and/or polypropylene bags.

Storage and Transfer

All contaminated water, ice, snow, soil, and clean up supplies will be stored in closed, labelled containers. All containers will be stored in a well ventilated area away from incompatible materials.

Disposal

All contaminated material will be transported to an appropriate disposal facility.

5.3 SPILL RESPONSE ACTIONS GASOLINE AND JET B AVIATION FUEL

Take action only if safety permits – stop the source flow if safe to do so and eliminate all ignition sources.

Never smoke when dealing with these types of spills.

On Land

Build a containment berm using soil material or snow and place a plastic tarp at the foot of the berm for easy capture of the spill after all vapours have dissipated.

Remove the spill by using absorbent pads or excavating the soil, gravel or snow.

Remove spill splashed on vegetation using particulate absorbent material.

On Muskeg

Do not deploy personnel and equipment on marsh or vegetation.

Remove pooled gasoline or Jet B with sorbent pads and/or skimmer.

Flush with low pressure water to herd oil to collection point.

On advice from regulatory agencies, burn only in localized areas, e.g., trenches, piles or windrows.

Do not burn if root systems can be damaged (low water table).

Minimize damage caused by equipment and excavation.

On Water

Contain spill as close to release point as possible.

Use containment boom to capture spill for recovery after vapours have dissipated.

Use absorbent pads to capture small spills.

Use skimmer for larger spills.

On Ice and Snow

Build a containment berm around spill using snow.

Remove spill using absorbent pads or particulate sorbent material.

The contaminated ice and snow must be scraped and shovelled into plastic buckets with lids, 205 litre drums, and/or polypropylene bags.

Storage and Transfer

All contaminated water, ice, snow, soil, and clean up supplies will be stored in closed, labelled containers. All containers will be stored in a well ventilated area away from incompatible materials.

Disposal

All contaminated material will be transported to an appropriate disposal facility.

5.4 SPILL RESPONSE ACTIONS PROPANE

Take action only if safety permits. Gases stored in cylinders can explode when ignited.
Keep vehicles away from area.

Never smoke when dealing with these types of spills.

On Land

Do not attempt to contain the propane release.

On Water

Do not attempt to contain the propane release.

On Ice and Snow

Do not attempt to contain the propane release.

General

It is not possible to contain vapours when released.

Water spray can be used to knock down vapours if there is no chance of ignition.

Small fires can be extinguished with dry chemical or CO₂.

Personnel should withdraw immediately from area unless a small leak is stopped immediately after it has been detected.

If tanks are damaged, gas should be allowed to disperse and no recovery attempt should be made.

Personnel should avoid touching release point on containers since frost forms very rapidly.

Keep away from tank ends.

Storage and Transfer

It is not possible to contain vapours when released.

Disposal

All contaminated material will be transported to an appropriate disposal facility.

6.0 PROCEDURES FOR TRANSFERRING, STORING, AND MANAGING SPILL-RELATED WASTES

In most cases, spill cleanups are initiated at the far end of the spill and contained moving toward the centre of the spill. Sorbent socks and pads are generally used for small spill cleanup. A pump with attached fuel transfer hose can suction spills from leaking containers or large accumulations on land or ice, and direct these larger quantities into empty drums. Hand tools such as cans, shovels, and rakes are also very effective for small spills or hard to reach areas. Heavy equipment can be used if deemed necessary but may be constrained by transportation to site constraints.

Used sorbent materials are to be placed in plastic bags for future disposal at an approved disposal facility. All materials mentioned in this section are available in the spill kits located on the Marce Project. Following cleanup, any tools or equipment used will be properly washed and decontaminated, or replaced if this is not possible.

For most of the containment procedures outlined in Section 5, spilled petroleum products and materials used for containment will be placed into empty waste oil containers and sealed for proper disposal at an approved disposal facility.

7.0 PROCEDURES FOR RESTORING AFFECTED AREAS

Once a spill has been contained, Anconia will consult with the Aboriginal Affairs and Northern Development Canada Inspector assigned to the property to determine the level of cleanup required. The Inspector may require a site-specific study to ensure appropriate cleanup levels are met. Criteria that may be considered include natural biodegradation of oil, replacement of soil and revegetation.

8.0 TRAINING

All employees and contractors working on the Marce Project will be trained in the safe operation of all machinery and tools to help prevent hazardous material spills. All employees on site will also be required to participate in an orientation session, during which all locations of the spill plan and spill kits will be provided. An overview of the plan will be provided by the On-Scene Coordinator leading the orientation session. Specific training sessions are scheduled for individuals directly involved in handling hazardous materials to ensure they know all steps to be undertaken in handling these materials, as well as the steps involved in the event of a spill, including the proper use of spill kits.

APPENDIX 1

NT/NU Spill Report Instructions and Form

Instructions for Completing the NT-NU Spill Report Form

This form can be filled out electronically and e-mailed as an attachment to spills@gov.nt.ca. Until further notice, please verify receipt of e-mail transmissions with a follow-up telephone call to the spill line. Forms can also be printed and faxed to the spill line at 867-873-6924. Spills can still be phoned in by calling collect at 867-920-8130.

A. Report Date/Time	The actual date and time that the spill was reported to the spill line. If the spill is phoned in, the Spill Line will fill this out. Please do not fill in the Report Number : the spill line will assign a number after the spill is reported.
B. Occurrence Date/Time	Indicate, to the best of your knowledge, the exact date and time that the spill occurred. Not to be confused with the report date and time (see above).
C. Land Use Permit Number /Water Licence Number	This only needs to be filled in if the activity has been licenced by the Nunavut Water Board and/or if a Land Use Permit has been issued. Applies primarily to mines and mineral exploration sites.
D. Geographic Place Name	In most cases, this will be the name of the city or town in which the spill occurred. For remote locations – outside of human habitations – identify the most prominent geographic feature, such as a lake or mountain and/or the distance and direction from the nearest population center. You must include the geographic coordinates (Refer to Section E).
E. Geographic Coordinates	This only needs to be filled out if the spill occurred outside of an established community such as a mine site. Please note that the location should be stated in degrees, minutes and seconds of Latitude and Longitude.
F. Responsible Party Or Vessel Name	This is the person who was in management/control/ownership of the substance at the time that it was spilled. In the case of a spill from a ship/vessel, include the name of the ship/vessel. Please include full address, telephone number and e-mail. Use box K if there is insufficient space. Please note that, the owner of the spilled substance is ultimately responsible for any spills of that substance, regardless of who may have actually caused the spill.
G. Contractor involved?	Were there any other parties/contractors involved? An example would be a construction company who is undertaking work on behalf of the owner of the spilled substance and who may have contributed to, or directly caused the spill and/or is responding to the spill.
H. Product Spilled	Identify the product spilled; most commonly, it is gasoline, diesel fuel or sewage. For other substances, avoid trade names. Wherever possible, use the chemical name of the substance and further, identify the product using the four digit UN number (eg: UN1203 for gasoline; UN1202 for diesel fuel; UN1863 for Jet A & B)
I. Spill Source	Identify the source of the spill: truck, ship, home heating fuel tank and, if known, the cause (eg: fuel tank overflow, leaking tank; ship ran aground; traffic accident, vandalism, storm, etc.). Provide an estimate of the extent of the contaminated/impacted area (eg: 10 m ²)
J. Factors Affecting Spill	Any factors which might make it difficult to clean up the spill: rough terrain, bad weather, remote location, lack of equipment. Do you require advice and/or assistance with the cleanup operation? Identify any hazards to persons, property or environment: for example, a gasoline spill beside a daycare centre would pose a safety hazard to children. Use box K if there is insufficient space.
K. Additional Information	Provide any additional, pertinent details about the spill, such as any peculiar/unique hazards associated with the spilled material. State what action is being taken towards cleaning up the spill; disposal of spilled material; notification of affected parties. If necessary, append additional sheets to the spill report. Number the pages in the same format found in the lower right hand corner of the spill form: eg. "Page 1 of 2", "Page 2 of 2" etc. Please number the pages to ensure that recipients can be certain that they received all pertinent documents. If only the spill report form was filled out, number the form as "Page 1 of 1".
L. Reported to Spill Line by	Include your full name, employer, contact number and the location from which you are reporting the spill. Use box K if there is insufficient space.
M. Alternate Contact	Identify any alternate contacts. This information assists regulatory agencies to obtain additional information if they cannot reach the individual who reported the spill.
N. Report Line Use Only	Leave Blank. This box is for the Spill Line's use only.



Canada

NT-NU SPILL REPORT

OIL, GASOLINE, CHEMICALS AND OTHER HAZARDOUS MATERIALS

NT-NU 24-HOUR SPILL REPORT LINE

TEL: (867) 920-8130

FAX: (867) 873-6924

EMAIL: spills@gov.nt.ca

REPORT LINE USE ONLY

A	REPORT DATE: MONTH - DAY - YEAR		REPORT TIME		<input type="checkbox"/> ORIGINAL SPILL REPORT, OR <input type="checkbox"/> UPDATE # _____ TO THE ORIGINAL SPILL REPORT	REPORT NUMBER _____
	B OCCURRENCE DATE: MONTH - DAY - YEAR		B OCCURRENCE TIME			
C	LAND USE PERMIT NUMBER (IF APPLICABLE)			WATER LICENCE NUMBER (IF APPLICABLE)		
D	GEOGRAPHIC PLACE NAME OR DISTANCE AND DIRECTION FROM NAMED LOCATION				REGION <input type="checkbox"/> NWT <input type="checkbox"/> NUNAVUT <input type="checkbox"/> ADJACENT JURISDICTION OR OCEAN	
E	LATTITUDE DEGREES MINUTES SECONDS			LONGITUDE DEGREES MINUTES SECONDS		
F	RESPONSIBLE PARTY OR VESSEL NAME		RESPONSIBLE PARTY ADDRESS OR OFFICE LOCATION			
G	ANY CONTRACTOR INVOLVED		CONTRACTOR ADDRESS OR OFFICE LOCATION			
H	PRODUCT SPILLED		QUANTITY IN LITRES, KILOGRAMS OR CUBIC METRES		U.N. NUMBER	
	SECOND PRODUCT SPILLED (IF APPLICABLE)		QUANTITY IN LITRES, KILOGRAMS OR CUBIC METRES		U.N. NUMBER	
I	SPILL SOURCE		SPILL CAUSE		AREA OF CONTAMINATION IN SQUARE METRES	
J	FACTORS AFFECTING SPILL OR RECOVERY		DESCRIBE ANY ASSISTANCE REQUIRED		HAZARDS TO PERSONS, PROPERTY OR EQUIPMENT	
K	ADDITIONAL INFORMATION, COMMENTS, ACTIONS PROPOSED OR TAKEN TO CONTAIN, RECOVER OR DISPOSE OF SPILLED PRODUCT AND CONTAMINATED MATERIALS					
L	REPORTED TO SPILL LINE BY	POSITION	EMPLOYER	LOCATION CALLING FROM	TELEPHONE	
M	ANY ALTERNATE CONTACT	POSITION	EMPLOYER	ALTERNATE CONTACT LOCATION	ALTERNATE TELEPHONE	
REPORT LINE USE ONLY						
N	RECEIVED AT SPILL LINE BY	POSITION STATION OPERATOR	EMPLOYER	LOCATION CALLED YELLOWKNIFE, NT	REPORT LINE NUMBER (867) 920-8130	
LEAD AGENCY <input type="checkbox"/> EC <input type="checkbox"/> CCG <input type="checkbox"/> GNWT <input type="checkbox"/> GN <input type="checkbox"/> ILA <input type="checkbox"/> INAC <input type="checkbox"/> NEB <input type="checkbox"/> TC			SIGNIFICANCE <input type="checkbox"/> MINOR <input type="checkbox"/> MAJOR <input type="checkbox"/> UNKNOWN		FILE STATUS <input type="checkbox"/> OPEN <input type="checkbox"/> CLOSED	
AGENCY	CONTACT NAME		CONTACT TIME		REMARKS	
LEAD AGENCY						
FIRST SUPPORT AGENCY						
SECOND SUPPORT AGENCY						
THIRD SUPPORT AGENCY						

APPENDIX 2

Regional and Detailed Property Location Maps

APPENDIX 3

MSDS Sheets

