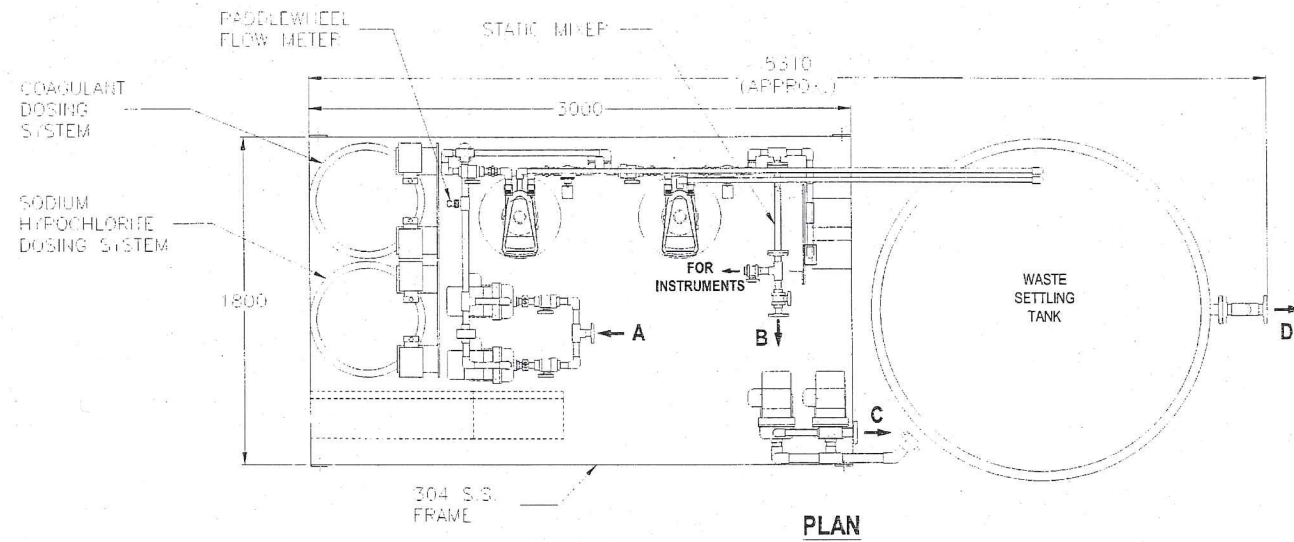


E337697-PM401-50-042-0009_SUB04

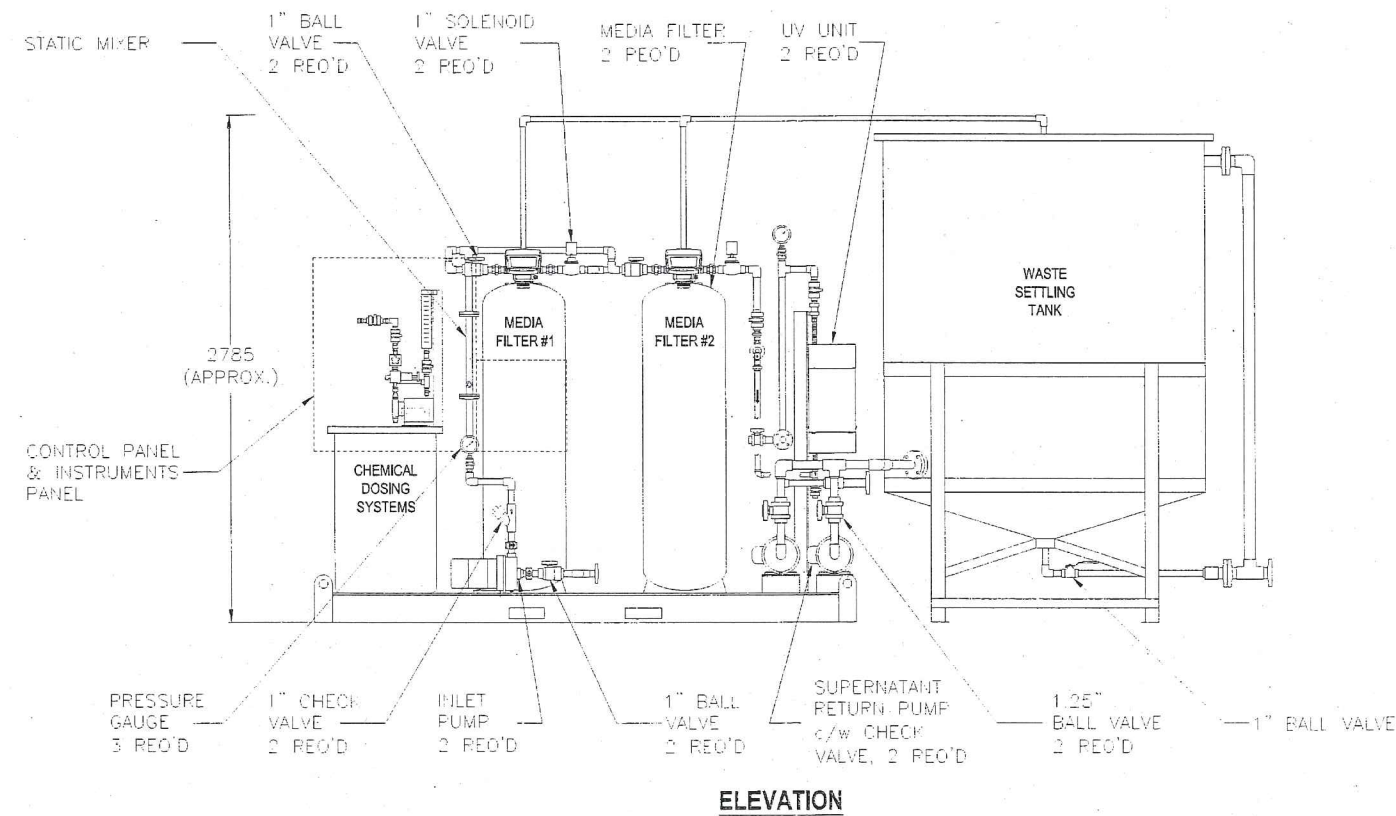


NOTES:

1. ALL DIMENSIONS ARE IN MM IF NOT OTHERWISE SPECIFIED.
2. MEDIA FILTER VESSELS ARE MADE OF FRP.
3. CHEMICAL TANKS AND WASTE SETTLING TANKS ARE MADE OF POLYETHYLENE.
3. ALL CONNECTING PIPING AND FITTINGS ARE SCH.80 PVC.
4. ALL COMPONENTS ARE PRE-ASSEMBLED ONTO 304 S.S. FRAME EXCEPT FOR WASTE SETTLING TANK.
5. SOME INSTRUMENTS AND PIPING SUPPORTING ARE NOT SHOWN FOR CLARITY.

DENOTATION:

- A: RAW WATER INLET (1" 150# FLANGE)
- B: TREATED WATER OUTLET (1" 150# FLANGE)
- C: SUPERNATANT TO RAW WATER STRAGE (1" 150# FLANGE)
- D: WASTE WATER TO DRAIN (2" 150# FLANGE)



REV	DESCRIPTION	DD / MM / YYY	DESIG	CHEC	APPR	NOTES
00	ISSUED FOR APPROVAL	12/09/2011	W.D.	Y.L.	F.L.	
REVISION HISTORY						
Since 1950 TORONTO CANADA		MILNE INLET (PORT) DESIGN FLOW RATE 53 M3/DAY MEDIA-FILTRATION SYSTEM GENERAL ARRANGEMENT				
CUSTOMER ARCELOR MITTAL	PROJECT MARY RIVER WTP. BAFF- INLAND, H337697-PM401	SCALE 1:17.5 OR AS NOTED	FILE NO.: 11-2930	SHEET 1 OF 1		
CONTRACTOR HTACH LIMITED	CONSULTING ENGINEER HTACH LIMITED	DESIGN DATE: Sep. 12, 2011	DWG. NO.: 11-2930-PWTF1-01S	VERSION R 00		
		THIRD ANGLE	PLOT DATE: Sep. 12, 2011			

THIS DOCUMENT EMBODIES DESIGNS AND INFORMATION PROPRIETARY TO NAPIER-REID LTD. IT IS TO BE USED ONLY FOR THE PURPOSE AND BY THE ENTITY FOR WHICH IT WAS ORIGINALLY SUPPLIED. THE DOCUMENT MAY NOT BE DUPLICATED, DISCLOSED TO ANY OTHER PERSON OR ENTITY, OR USED FOR MANUFACTURE OF THE ITEM IN PART OR IN WHOLE WITHOUT THE PRIOR WRITTEN PERMISSION OF NAPIER-REID LTD.