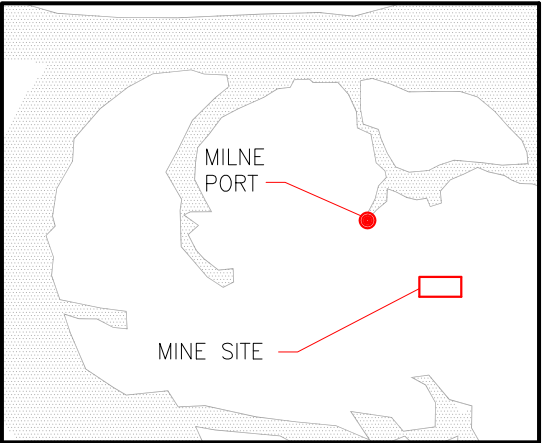
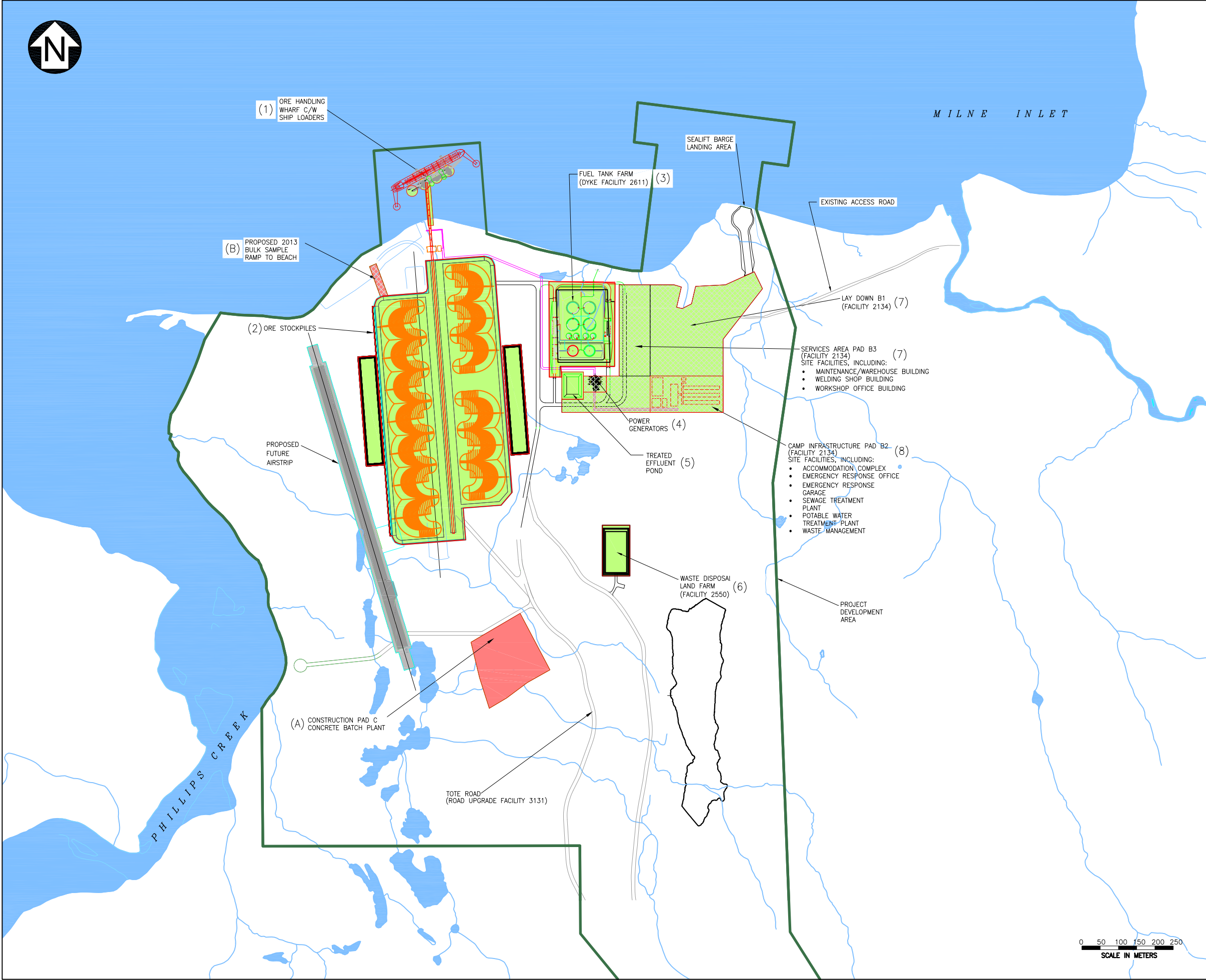
	Interim Closure and Reclamation Plan	Issue Date: March 31, 2016 Revision: 4	
	Environment	Document #: BAF-PH1-830-P16-0012	

Appendix A - Preliminary Mine Closure and Reclamation Plan Drawings

The information contained herein is proprietary Baffinland Iron Mines Corporation and is used solely for the purpose for which it is supplied. It shall not be disclosed in whole or in part, to any other party, without the express permission in writing by Baffinland Iron Mines Corporation.

Note: This is an UNCONTROLLED COPY. All staff members are responsible to ensure the latest revision is used



RECLAMATION AREA - AFTER CONSTRUCTION

AREA ID	m²
A	31,597
B	1,835
TOTAL	33,432

RECLAMATION AREA - AFTER OPERATION

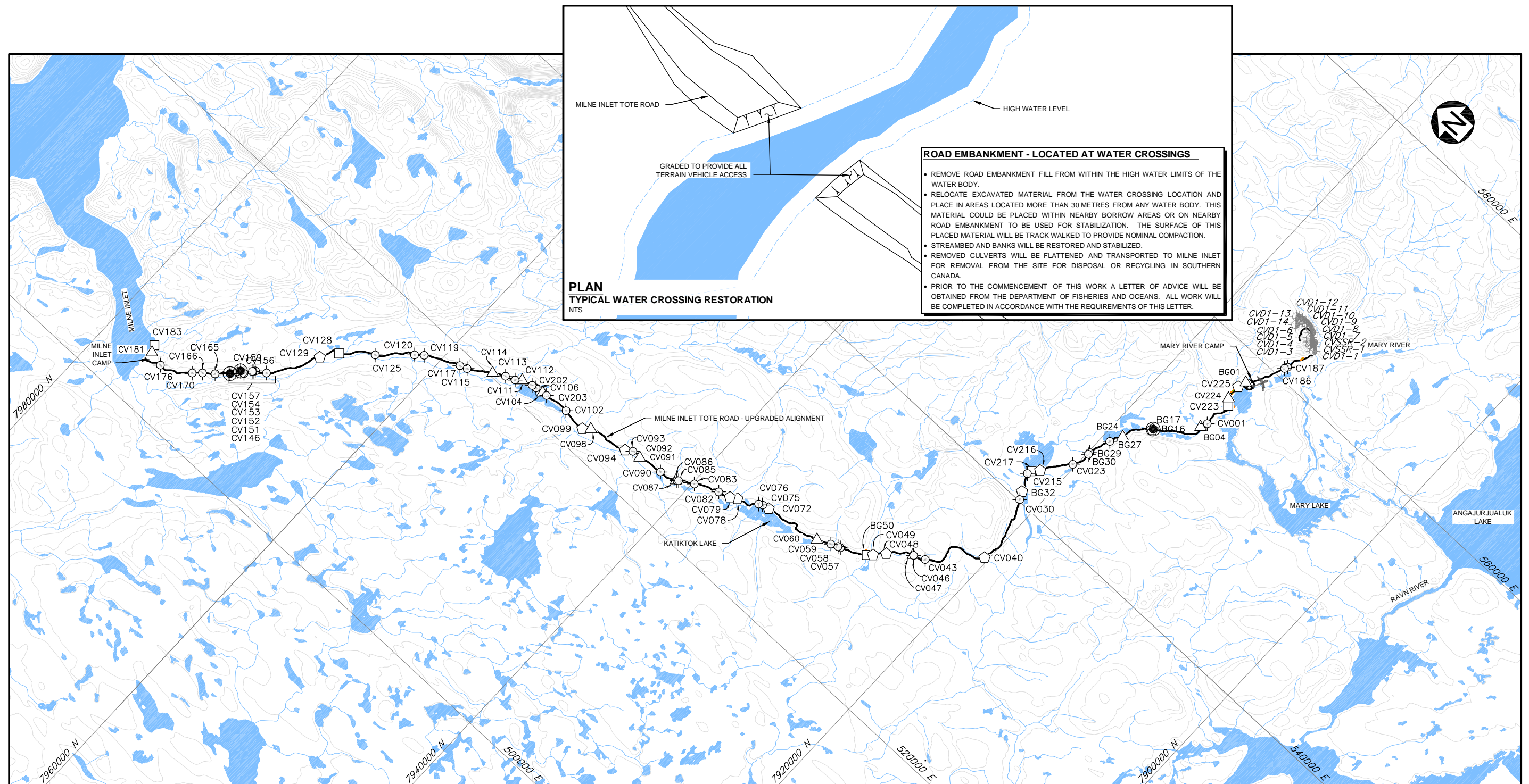
AREA ID	m²
1	4600
2	267,770
3	42,630
4	2,780
5	4,450
6	10,500
7	116,730
8	20,000
TOTAL	451,460

LEGEND:

() RECLAMATION AREA ID

RECLAMATION AREA - AFTER CONSTRUCTION

RECLAMATION AREA - AFTER OPERATION



PLAN

TYPICAL WATER CROSSING RESTORATION

NTS

ROAD EMBANKMENT - LOCATED AT WATER CROSSINGS

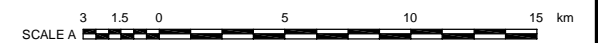
- REMOVE ROAD EMBANKMENT FILL FROM WITHIN THE HIGH WATER LIMITS OF THE WATER BODY.
- RELOCATE EXCAVATED MATERIAL FROM THE WATER CROSSING LOCATION AND PLACE IN AREAS LOCATED MORE THAN 30 METRES FROM ANY WATER BODY. THIS MATERIAL COULD BE PLACED WITHIN NEARBY BORROW AREAS OR ON NEARBY ROAD EMBANKMENT TO BE USED FOR STABILIZATION. THE SURFACE OF THIS PLACED MATERIAL WILL BE TRACK WALKED TO PROVIDE NOMINAL COMPACTION.
- STREAMBED AND BANKS WILL BE RESTORED AND STABILIZED.
- REMOVED CULVERTS WILL BE FLATTENED AND TRANSPORTED TO MILNE INLET FOR REMOVAL FROM THE SITE FOR DISPOSAL OR RECYCLING IN SOUTHERN CANADA.
- PRIOR TO THE COMMENCEMENT OF THIS WORK A LETTER OF ADVICE WILL BE OBTAINED FROM THE DEPARTMENT OF FISHERIES AND OCEANS. ALL WORK WILL BE COMPLETED IN ACCORDANCE WITH THE REQUIREMENTS OF THIS LETTER.

LEGEND:

- | | | | |
|---|---|---|----------------------|
|  | WATER |  | EXTRA SMALL CROSSING |
| | MILNE INLET TOTE ROAD - UPDATED ALIGNMENT | | SMALL CROSSING |
| | AIRSTRIIP | | MEDIUM CROSSING |
|  | EXPLORATION CAMP LOCATION |  | LARGE CROSSING |
| | CULVERT LOCATION | | EXTRA LARGE CROSSING |

NOTES:

1. COORDINATE GRID IS UTM (NAD83) ZONE 17.
2. BASE MAP: © HER MAJESTY THE QUEEN IN RIGHTS OF CANADA, DEPARTMENT OF NATURAL RESOURCES, (2004). ALL RIGHTS RESERVED.
3. CONTOURS ARE IN METRES. CONTOUR INTERVAL VARIES.
4. MILNE INLET TOTE ROAD ALIGNMENT SURVEY PROVIDED BY GENIVAR (SURVEY COMPLETED IN JULY 2008).
5. NOT FOR CONSTRUCTION.



BAFFINLAND IRON MINES CORPORATION

MARY RIVER PROJECT

MILNE INLET TOTE ROAD WATER CROSSING RESTORATION

Knight Piésold
CONSULTING

P/A NO. NB102-181/29	REF NO. 1	REV 0
-------------------------	--------------	----------