

Attachment 1.2

2018 Milne Inlet Tote Road Drilling Program

Bridge 1 (CH. 15.950) – Near Km 17 of Existing Tote Road

Bridge 2 (CH. 70.690) – Southwest of Km 75 of Existing Tote Road

Bridge 4 (CH. 102.592) – Near Km 97 of Existing Tote Road

BRIDGE CENTRELINE CO-ORDINATE LIST UTM 17 N		
	Y	X
W.P. #1	514210.674	7965645.389
W.P. #2	514260.244	7965610.408

0 50 100 200

SCALE IN METER

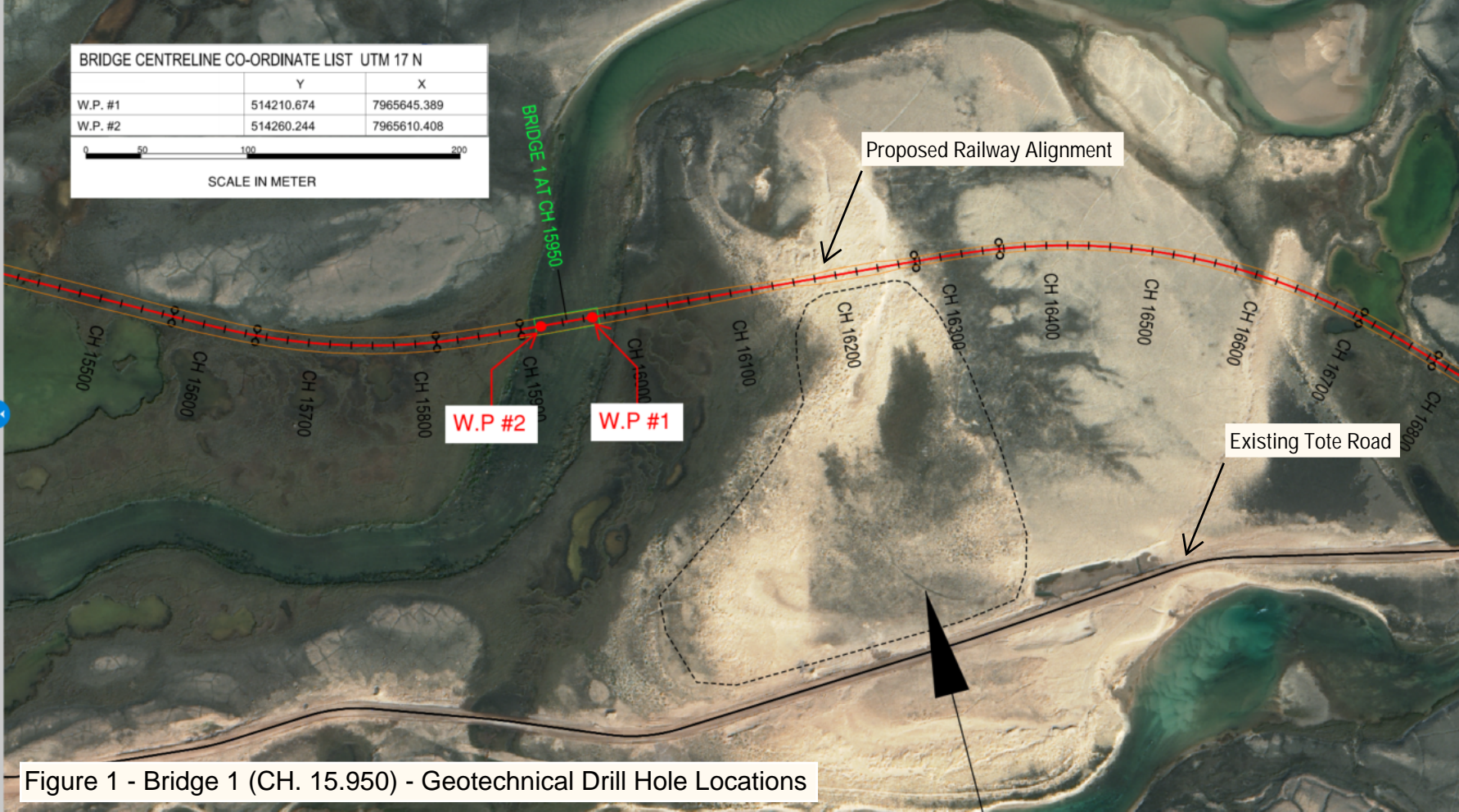
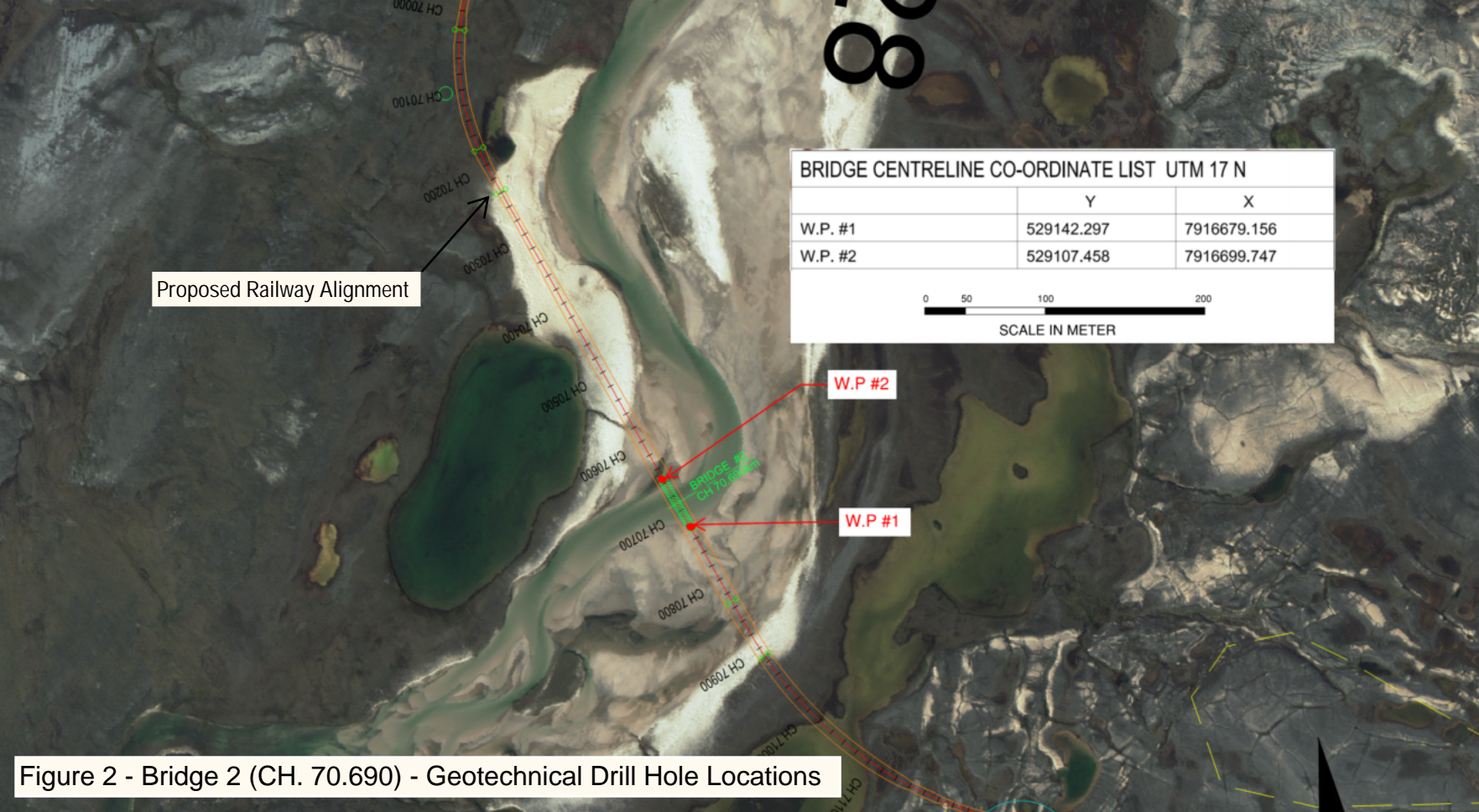


Figure 1 - Bridge 1 (CH. 15.950) - Geotechnical Drill Hole Locations



Proposed Railway Alignment

BRIDGE CENTRELINE CO-ORDINATE LIST UTM 17 N		
	Y	X
W.P. #1	529142.297	7916679.156
W.P. #2	529107.458	7916699.747

0 50 100 200
SCALE IN METER

W.P. #2

W.P. #1

Figure 2 - Bridge 2 (CH. 70.690) - Geotechnical Drill Hole Locations

Existing Tote Road

Figure 3 - Bridge 4 (CH. 102.592) - Geotechnical Drill Hole Locations

Attachment 2

Proposed Water Sources for 2018 Geotechnical Drilling Program

Table 1 – Proposed Water Source Locations for 2018 Geotechnical Drilling Program¹

Water Source	Approx. Tote Road Chainage
CV 128 River	Km 17
Km 32 Lake	Km 32
Katiktok Lake	Km 52 – 58
BG50 River	Km 62
CV217 River	Km 80
Muriel Lake	Km 78 – 80
David Lake	Km 87 - 89
CV233 (Tom River)	Km 97
Camp Lake	Km 100

¹Refer to Type A Water Licence 2AM-MRY1325, Amend. 1 – Refer to Part E, Item 25