



October 21, 2019

Jonathan Mesher
Resource Management Officer
Crown Indigenous Relations and Northern Affairs Canada (CIRNAC)
Box 100
Iqaluit, NU X0A 0H0

**Re: 2019/2020 Geotechnical Drilling Program – Milne Port Test Piles
Type 'B' Water Licence 2BE-MRY1421
Commercial Lease No. Q13C301**

Baffinland Iron Mines Corporation (Baffinland) plans to commence a 2019 drilling program at the Milne Port Site for the purpose of geotechnical boreholes and test pile installations. The Program is required to support engineering designs for proposed Phase 2 infrastructure. The proposed test pile locations and their proximity to surrounding water bodies are shown in Attachment 1. The drilling program is being managed by Hatch Ltd. and will be performed by Aecon Group Inc. The program is scheduled to commence on November 1, 2019.

The drilling program consists of three (3) test piles. Test Pile P1 is located at the north end of Milne Port in the vicinity of Milne Inlet. Test Piles PTC1 and PLC3 are located at the south end of Milne Port. The proposed test pile locations, including coordinates, are presented in Attachment 1 and in the below table with the applicable start dates.

ID	Easting	Northing	Start Date
PLC3	503059	7974797	November 1, 2019
PCT1	503482	7974898	April 1, 2020
P1	503549	7976353	May 1, 2020

Test piles will be installed in boreholes drilled using an air rotary drill. No water will be used to drill the boreholes. Once the borehole is drilled, the pile will be placed and the borehole backfilled with a sand/water slurry using a chute or tremie pipe. Heated water and the slurry mixer/pump will be provided from a truck-mounted unit. Other supporting vehicles include pick-up trucks for personnel, equipment and supplies, a crane for pile installation, compressors to provide power for the drills, light towers, a heated shelter, and a small generator. Test piles will be installed to depths of 20 to 25.3 m.



Environmental monitoring will be performed, including pre, during and post drilling inspections. Drill cuttings will be disposed of in accordance with Part F, Item 4 of Baffinland's Type B Water Licence 2BE-MRY1421 (Type B Water Licence). Runoff and siltation mitigation measures consistent with Baffinland's Environmental Protection Plan BAF-PH1-830-P16-0008r1 will be implemented during backfilling of the test piles with the water/sand slurry.

Despite best planning, it should be noted that unforeseen circumstances may necessitate some changes in planning as the program proceeds. Baffinland will endeavor to inform the Inspector and other relevant parties in such circumstances.

In accordance with the conditions of the Type B Water Licence, this letter and attachment provides Baffinland's notification for the drilling of a total of three (3) boreholes with proximity to nearby water bodies.

We trust that this information meets the various notification requirements for geotechnical drilling at the Project. Please do not hesitate to contact the undersigned, should you have any questions or comments.

Regards,

A handwritten signature in black ink, appearing to read "Chris Murray", written over a large, stylized loop.

Christopher Murray
Environmental & Regulatory Compliance Manager

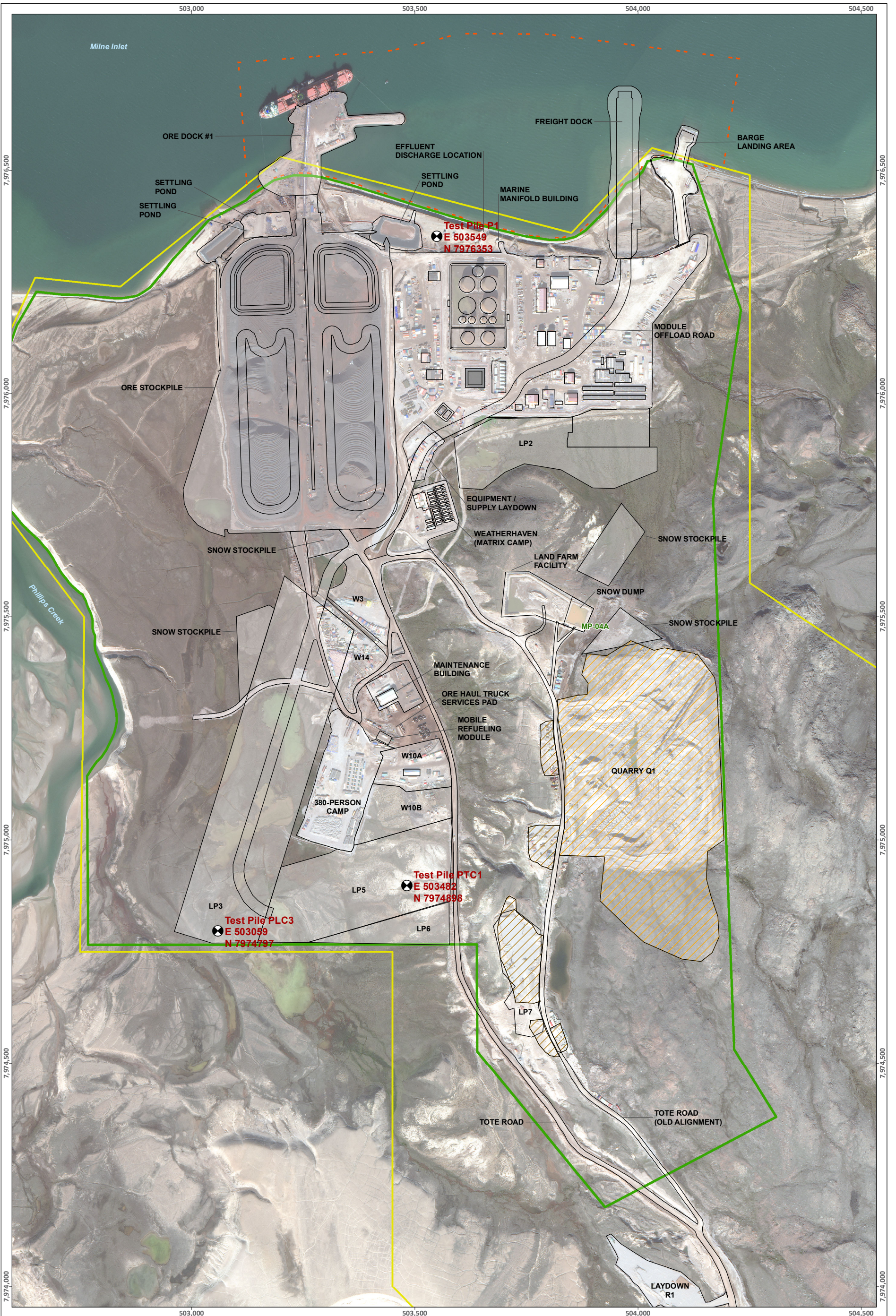
Attachments:

Attachment 1:Milne Port Test Pile Locations

Cc: Timothy Ray Sewell, Shawn Stevens, Connor Devereaux, Megan Lord-Hoyle, Lou Kamermans, Steve Borcsok (Baffinland)
Assol Kubeisinova, Karén Kharatyan (NWB)
Bridget Campbell, Godwin Okonkwo, Justin Hack (CIRNAC)
Chris Spencer (QIA)

Attachment 1

Milne Port Test Pile Locations



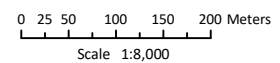
LEGEND

- Test Pile Location
- Project Development Area
- Foreshore Lease Boundary
- Commercial Lease Boundary
- Borrow Area
- Quarry Area
- Infrastructure

ᓄᓐᓄᓐ ᐅᓕᓕᓐᓄᓐ ᓄᓐᓄᓐ ᓄᓐᓄᓐ MARY RIVER PROJECT

Milne Port Test Pile Locations

Projection: NAD 1983 UTM ZONE 17N.
 Base Map: © Her Majesty the Queen in rights of
 Canada's Department of Natural Resources (2009).
 All rights reserved.



ᓄᓐᓄᓐ ᓄᓐᓄᓐ
FIGURE 1

SAVED: C:\Users\kellie\Documents\MilnePort - Maps\Permits\Pile Test\BIM_MilnePort_Infrastructure.mxd; 08-Sep-19