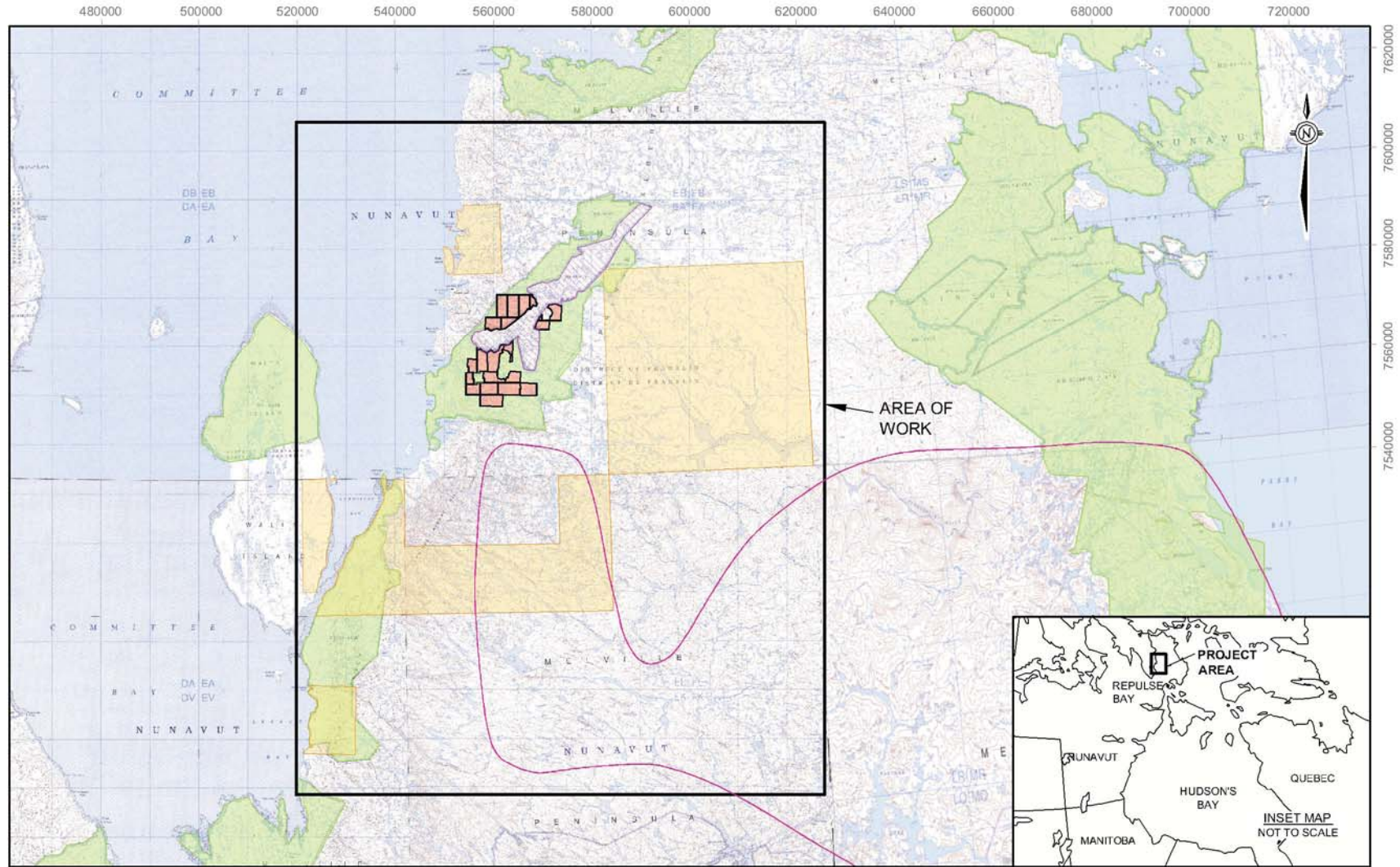
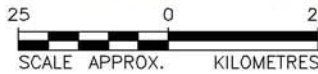


## **Appendix B – Site Maps**



**LEGEND**

- IOL SURFACE AND SUBSURFACE RIGHTS HB-09
- IOL SURFACE RIGHTS
- VALE CLAIMS
- VALE PROSPECTING PERMITS
- WASI CARIBOU CALVING AREA



**REFERENCE**

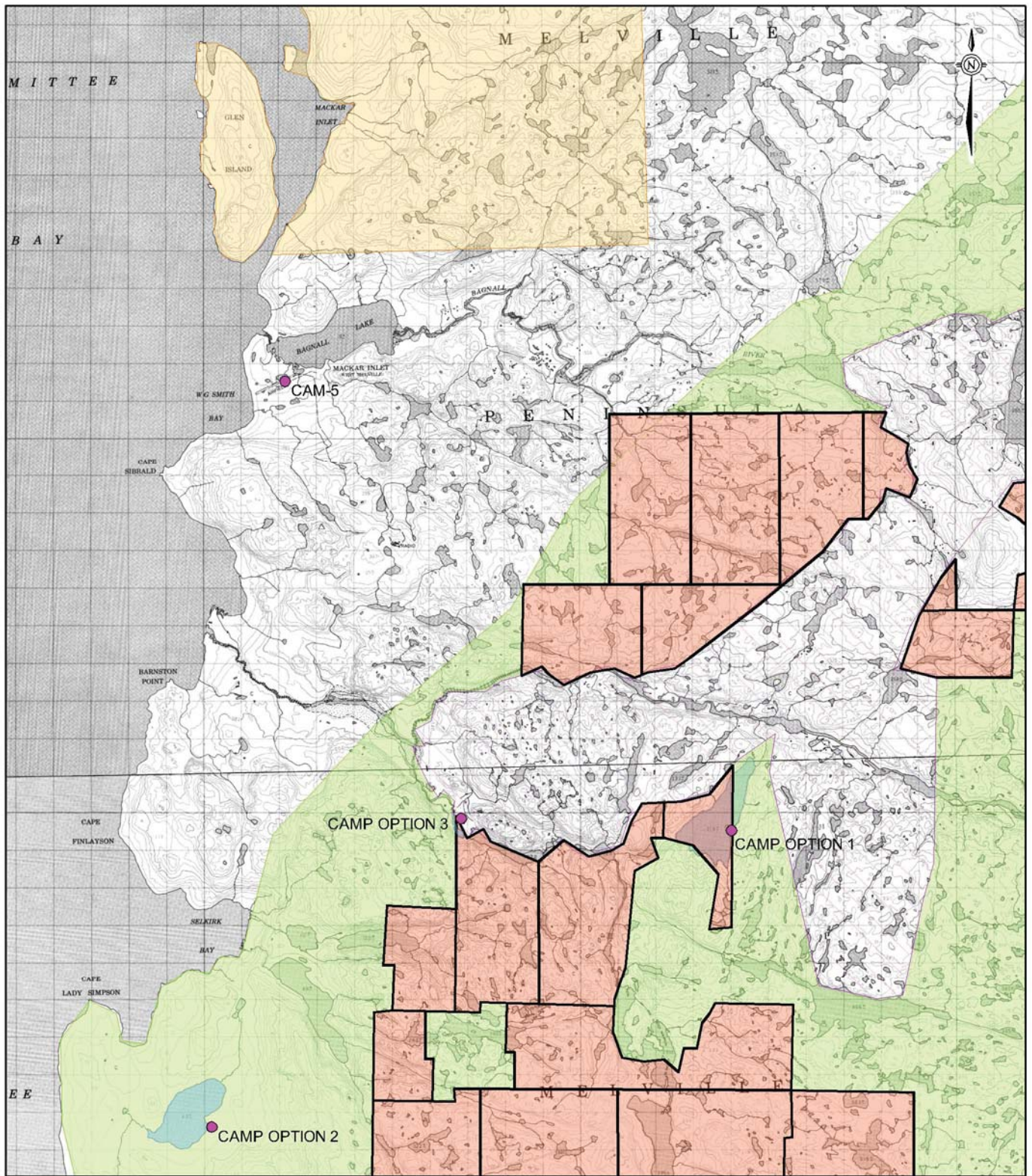
TOPOGRAPHIC MAPS 46M AND 47A OBTAINED FROM CANMATRIX. © 1995 HER MAJESTY THE QUEEN IN RIGHT OF CANADA. DEPARTMENT OF NATURAL RESOURCES. ALL RIGHTS RESERVED.  
 TOPOGRAPHIC MAPS 46N, 46O-P, AND 47B OBTAINED FROM CANMATRIX. ©1993  
 HER MAJESTY THE QUEEN IN RIGHT OF CANADA. DEPARTMENT OF NATURAL RESOURCES. ALL RIGHTS RESERVED.  
 WASI CARIBOU BOUNDARY CAPTURED FROM NUNAVUT PLANNING COMMISSION WEB SITE.  
 DATUM: NAD83 PROJECTION: UTM ZONE 16

PROJECT  
**VALE EXPLORATION CANADA INC.  
 MELVILLE, NUNAVUT**

TITLE  
**SITE LOCATION MAP**

 <b>Golder Associates</b> Calgary, Alberta	PROJECT	11.1372.0019.5000	FILE No.	11137200195000A001
	DESIGN	SG 19 Jan. 2012	SCALE	AS SHOWN REV. 0
	CADD	BSW 26 Jan. 2012		
	CHECK	CD 07 Feb. 2012		
	REVIEW	JR 09 Feb. 2012		

**FIGURE: 1**



**LEGEND**

- CAMP OPTION LOCATION
- IOL SURFACE AND SUBSURFACE RIGHTS HB-09
- IOL SURFACE RIGHTS
- VALE CLAIMS
- VALE PROSPECTING PERMITS

**REFERENCE**

TOPOGRAPHIC MAPS 47B-2 AND 47B-7 OBTAINED FROM CANMATRIX. © 1975 HER MAJESTY THE QUEEN IN RIGHT OF CANADA. DEPARTMENT OF NATURAL RESOURCES. ALL RIGHTS RESERVED.  
 DATUM: NAD83 PROJECTION: UTM ZONE 16

<b>PROJECT</b>	<b>VALE EXPLORATION CANADA INC. MELVILLE, NUNAVUT</b>				
<b>TITLE</b>	<b>SITE PLAN</b>				
 <b>Golder Associates</b> Calgary, Alberta	PROJECT	11.1372.0019.5000	FILE No.	11.137200195000A002	
	DESIGN	SG	19 Jan. 2012	SCALE	AS SHOWN
	CADD	BSW	26 Jan. 2012	REV.	0
	CHECK	CD	07 Feb. 2012	<b>FIGURE: 2</b>	
REVIEW	JR	09 Feb. 2012			

L:\2011\137211-1372-00195000\Report\_A\Fig2\_11137200195000A002SitePlan.dwg Feb 0 09, 2012 - 10:39am