

# ABANDONMENT AND RESTORATION PLAN

## DEWAR LAKES CAMP QIKIQTANI REGION, NUNAVUT, CANADA



Prepared by:



Effective Date: June 1, 2017

## Contents

1	Introduction .....	1
1.1	Contact Details .....	1
1.2	Purpose and Scope .....	1
1.3	Other Plans .....	1
1.4	Camp Description and History .....	1
2	Schedule .....	2
3	Detailed Infrastructure .....	3
3.1	Camp .....	3
3.1.1	Structures .....	3
3.1.2	Other Camp Infrastructure and Equipment .....	3
3.1.3	Vehicles .....	4
4	Seasonal Shut downs .....	4
4.1	Inspection and Documentation .....	4
4.2	Buildings, Content, and Fuel .....	4
4.3	Waste .....	4
4.4	Seasonal Restoration .....	5
5	Final Abandonment and Restoration .....	5
5.1	Inspection and Documentation .....	5
5.2	Buildings, Content, and Fuel .....	5
5.3	Waste .....	6
5.4	Restoration .....	6
6	Post Closure Site Monitoring .....	6
7	Emergency Contact Information .....	7

## Tables

Table 7.1: Emergency Contact Information .....	7
--	---

## Appendices

Appendix 1: Figures .....	8
Appendix 2: Seasonal Camp Shutdown Inspection Record .....	10
Appendix 3: Example Camp Inventory Record .....	12

## 1 Introduction

This Abandonment and Restoration Plan (ARP) applies to activities carried out at the Commander Resources Ltd. ("Commander" or "the Company") Dewar Lakes Camp (the "Camp"), Nunavut, Canada.

This ARP will come into effect June 1, 2017, pending approval. Copies and updates to this plan may be obtained via the Company or APEX Geoscience Ltd. ("APEX"). The ARP will be replaced, upon approval, if there are any significant changes to the activities outlined in the existing permits which warrant changes to the ARP. Minor changes will be submitted as an addendum to the ARP and submitted to the distribution list as required.

### 1.1 Contact Details

**Commander Resources Ltd.**  
11th Floor, 1111 Melville Street  
Vancouver, BC V6E 3V6  
Tel: (604) 685-5254  
Fax: (604) 685-2814  
[info@commanderresources.com](mailto:info@commanderresources.com)  
[www.commanderresources.com](http://www.commanderresources.com)

**APEX Geoscience Ltd.**  
110-8429-24 Street NW  
Edmonton, AB T6P 1L3  
Tel: (780) 467-3532  
Fax: (780) 467-4025  
[info@apexgeoscience.com](mailto:info@apexgeoscience.com)  
[www.apexgeoscience.com](http://www.apexgeoscience.com)

### 1.2 Purpose and Scope

The purpose of the Dewar Lakes Camp ARP is to provide guidelines to follow during seasonal shutdown and final abandonment of the Camp, in order to return the campsite to as near as possible to natural conditions.

### 1.3 Other Plans

The ARP should be considered as a part of the Dewar Lakes Camp management system. Other management plans in place at the Dewar Lakes Camp include:

- Emergency Response Plan (ERP)
- Environmental Management Plan (EMP)
- Fuel Management Plan (FMP)
- Spill Prevention and Response Plan (SPRP)
- Waste Management Plan (WMP)

### 1.4 Camp Description and History

The Dewar Lakes Camp has been used by Commander Resources Ltd. since 2003 as a base location to conduct mineral exploration work on Baffin Island. Exploration programs and camp activities were most recently conducted under the authorization of Indigenous and Northern Affairs Canada ("INAC") Land Use Permit N2013C0014 (Expired Aug 14, 2016) and Nunavut Water Board ("NWB") Water Licence 2BE-NAD0813 (Expired September 1, 2013). With the accompanying documents,

Commander is applying for a new Land Use Permit and renewing the Water Licence to authorize work activities at the existing Dewar Lakes Camp.

The 40 person Dewar Lakes Camp is located on Crown Land beside Dewar Lakes, adjacent to the North Warning System Fox-3 airstrip in the Qikiqtani Region of Nunavut (Figure 1). The approximate location of the camp is 68°37'59" N and 71°6'38" W (or 414199E/7614919N UTM Nad83 Zone 19) and is located within the 1:50,000 National Topographic System ("NTS") map sheet 27B12.

The camp consists of accommodations for up to 40 persons, a large cook tent, generator shack, incinerator, core shacks and a metal silo structure to be used for storage.

The camp was last utilized by Commander to support exploration activities in 2011. The site was last occupied in 2013 by Biogenie Ltd. ("Biogenie") personnel, contracted by Commander, to clean up and secure the site after an episode of vandalism damaged camp structures. The vandalism resulted in significant damage and exposure of building contents to outdoor conditions, wind dispersion and wildlife.

The Dewar Lakes Camp Site was inspected in the summer of 2016 by an INAC Water Resources Officer and found to be vandalized and damaged once again.

The 2017 program, under the authorization of a new Land Use Permit subject to this application, will facilitate a cleanup and rebuild of the vandalized Dewar Lakes Camp. Upon re-establishment of the camp facilities, the camp will then be used to support exploration activities. The cleanup program at Dewar Lakes is tentatively scheduled to commence in June 2017. Use of the camp for exploration purposes will begin shortly after the camp cleanup commences and will be completed by September 2017. Exploration activities for 2017 and beyond will be authorized under separate permits and licences to be held by Commander or an assignee. It is anticipated that the rebuilt Dewar Lakes Camp will support ongoing exploration activities for the next several years.

## 2 Schedule

The cleanup and rehabilitation of the Dewar Lakes Camp is anticipated to commence the beginning of June and is estimated to take approximately one week to complete. Upon re-establishment of the camp facilities, the camp is anticipated be used to support exploration activities. The exploration program, which will be managed by Commander or an assignee, is expected to run through to September. A seasonal shutdown will take place at the completion of exploration activities for the year in September 2017.

Exploration programs are anticipated to utilize the Dewar Lakes Camp for 3 to 4 subsequent years, depending on each of the previous year's results. Prior to subsequent years program commencements all regulatory authorities will be notified and supplied with updated schedules.

Final abandonment and restoration will commence as soon as possible after it has been determined that the project does not warrant further exploration or following commercial production. The duration of the final abandonment and restoration is dependent on the scale of infrastructure on site and on environmental parameters (physical, biological, and socio economic). All final abandonment and restoration work will be completed prior to the date of expiry of any existing or future applicable land use permits and water licenses.

### 3 Detailed Infrastructure

#### 3.1 Camp

The following is a list which details the structures, equipment and vehicles that may be already on site, constructed or stored at the camp.

##### *3.1.1 Structures*

- 10 14'x16' insulated Weatherhaven/Weatherport tents on plywood flooring to serve as sleeper tents. Includes plywood beds, tables, chairs, heaters etc.
- 2 14'x16' insulated Weatherhaven/Weatherport tents on plywood flooring to serve as an office and First Aid. Includes plywood tables, chairs, heaters, etc.
- 2 16'x32' insulated Weatherhaven/Weatherport tents joined on plywood flooring to serve as a kitchen. Includes plywood kitchen counters, sink, plumbing, tables, chairs, heaters, etc.
- 1 16'x24' insulated Weatherhaven tent (or similar) on plywood flooring to serve as a dry. Includes shower stalls, sink, plumbing, heaters etc.
- 1 10'x12' plywood generator shack. Includes exhaust piping, etc.
- 2 14'x16' canvas tents joined for core logging.
- 1 12'x20' plywood latrine shack. Includes 5 facto toilets.
- 1 Metal silo for storage

##### *3.1.2 Other Camp Infrastructure and Equipment*

- 2 500gal Water tanks (1 for kitchen and 1 for dry)
- 2 Hot water tanks
- 2 Water pumps with fish screens and hose line
- 2 Refrigerators
- 2 Chest freezers
- 2 Cooking stoves
- 2 Washing machines

- 2 Dryers
- 1 Camp fuel cache, with Insta-Berm (or similar) secondary containment.  
Various lumber (stacked)  
Various office, camp and medical supplies and spill kits

### *3.1.3 Vehicles*

- 1 Helicopter (A-Star, Bell 407, or longRanger)
- 1 ATV with trailer (Honda Fourtrax or similar)

## **4 Seasonal Shut downs**

### **4.1 Inspection and Documentation**

Prior to a seasonal shutdown of the Camp, a complete inspection of all areas will be conducted. Prior to leaving the site, photographs will be taken to document the conditions and will be archived along with photos taken at the beginning of the season. Copies of these photos will be included as part of the Dewar Lakes Camp Annual Report. An example of the Seasonal Camp Inspection Record is attached in Appendix 2.

### **4.2 Buildings, Content, and Fuel**

A full inventory of all structures, equipment, fuel, and other supplies will be taken at the beginning and end of each exploration season. An example of the Camp Inventory Record is attached in Appendix 3.

All food, fuel, wastes, empty fuel drums, and valuable or sensitive equipment will be removed from site. Any salvageable items (i.e. food) may be donated to the communities if desired. A few wooden structures will be left at the camp. All structures to be left on site will be winterized, closed off, and secured. One structure will be designated to house any chemicals or other hazardous materials that are not suited to outdoor storage. All water tanks and pipes will be drained at the end of each season. Pumps and hoses will be drained and stored inside a secured structure. All mechanical equipment, including vehicles and generators will be winterized and stored in berms for secondary containment. When possible, the equipment and berms will be fully covered.

All empty drums will be removed from site.

### **4.3 Waste**

All 2017 wastes will be separated into combustible, recyclable or hazardous and the following waste treatments will be used:

Combustible Waste: All combustible waste will be incinerated in accordance with the Nunavut Environmental Guideline for the Burning and Incineration of Solid Waste. Any residual waste (ash) will be placed in sealed containers and backhauled for proper disposal.

Non-Combustible, Recyclable and Hazardous Waste: All non-combustible, recyclable and hazardous wastes will be sealed in appropriate containers and backhauled to Iqaluit for proper disposal.

Grey Water: Camp greywater will be stored and treated in an excavated sump, which will allow for slow infiltration into the soil and will be located at least 31 m away from the high water mark of any water body. If available, coarse gravel will be placed in the bottom of the sump to provide filtration, and supports will be built on the sides to prevent slumping. Filters will be installed on kitchen drains to ensure solid food wastes do not enter the sumps and have the potential to attract wildlife. When full, greywater sumps will be covered with enough material to allow for future ground settlement.

Sewage: The Dewar Lakes Camp will utilize Pacto toilets and the waste will be incinerated. Ash generated from sewage incineration will be stored in sealed metal 205 L drums and removed from site via regularly scheduled backhaul. At seasonal shut down the pacto toilets will be cleaned and the shack secured for the winter.

Contaminated soils/snow: All contaminated soil will be stored in empty 205 liter drums, and will be transported to Iqaluit for proper disposal.

Empty barrels/ fuel drums: Empty drums will be collected and transported to Iqaluit either for disposal at an approved site or for refilling.

For more information on waste generation and management see the “Dewar Lakes Camp Waste Management Plan.”

#### 4.4 Seasonal Restoration

Any contaminated areas around the camp will be treated in accordance with the “Dewar Lakes Camp Spill Prevention and Response Plan.” Any washed out areas will be filled and re-contoured to natural levels. Any areas of disturbed vegetation, including camp and fuel caches will be photographed and managed as per recommendation of the INAC inspector. Remediation procedures might include fertilization to encourage re-growth.

## 5 Final Abandonment and Restoration

### 5.1 Inspection and Documentation

Prior to final abandonment, a thorough inspection of all areas will be conducted. Any contaminated areas around the Camp that have gone unnoticed will be treated as per the “Dewar Lakes Camp Spill Prevention and Response Plan.” Photographs will be taken to include in the final reports submitted to the INAC Inspector and as part of the Annual Report submitted to the INAC, NWB and NIRB. All relevant regulatory agencies will be notified upon final abandonment of the Camp.

### 5.2 Buildings, Content, and Fuel

Prior to land use permit, claim or lease termination, all structures, equipment, supplies, and fuel will be removed from the Camp.



Any wooden floors will be burned in accordance with the Nunavut Environmental Guideline for the Burning and Incineration of Solid Waste, and tent sites may be fertilized, as per recommendation by the Inspector, to encourage re-vegetation. The open burning of structures will only occur after approval from INAC and NWB. A request letter will be submitted to the regulating authorities, which will include the characteristic and volume of material to be burned.

Any materials of value on site will be salvaged. Local businesses and residents will have the opportunity to salvage any remaining materials that will otherwise be disposed of.

All remaining fuel and empty drums will be removed from site. The soil under and surrounding any area where fuel was stored will be thoroughly inspected for any contamination and photographs will be taken.

### 5.3 Waste

All wastes will be disposed of in accordance with the “Dewar Lakes Camp Waste Management Plan” and any contamination will be treated as per the “Dewar Lakes Camp Spill Prevention and Response Plan”. Sumps will be inspected to ensure there is no leaching or run-off. Back filling and leveling will be employed as necessary.

### 5.4 Restoration

Tent sites and any other areas disturbed by activities related to the Dewar Lakes Camp will be fertilized as recommended by INAC Inspector to encourage re-vegetation. Eroded or washed out areas will be filled and re-contoured to natural levels. Any contaminated areas that have gone unnoticed will be treated as per the “Dewar Lakes Camp Spill Prevention and Response Plan.”

## 6 Post Closure Site Monitoring

After reclamation is complete, and if required, annual monitoring may take place. The monitoring may consist of soil and water testing, measuring and documenting plan re-growth, examining potential run-off and erosion problems, and checking the stability and condition of the core boxes. Reports, including photographs, will be submitted to the appropriate regulatory bodies. The monitoring will continue as long as the regulating bodies deem it necessary.

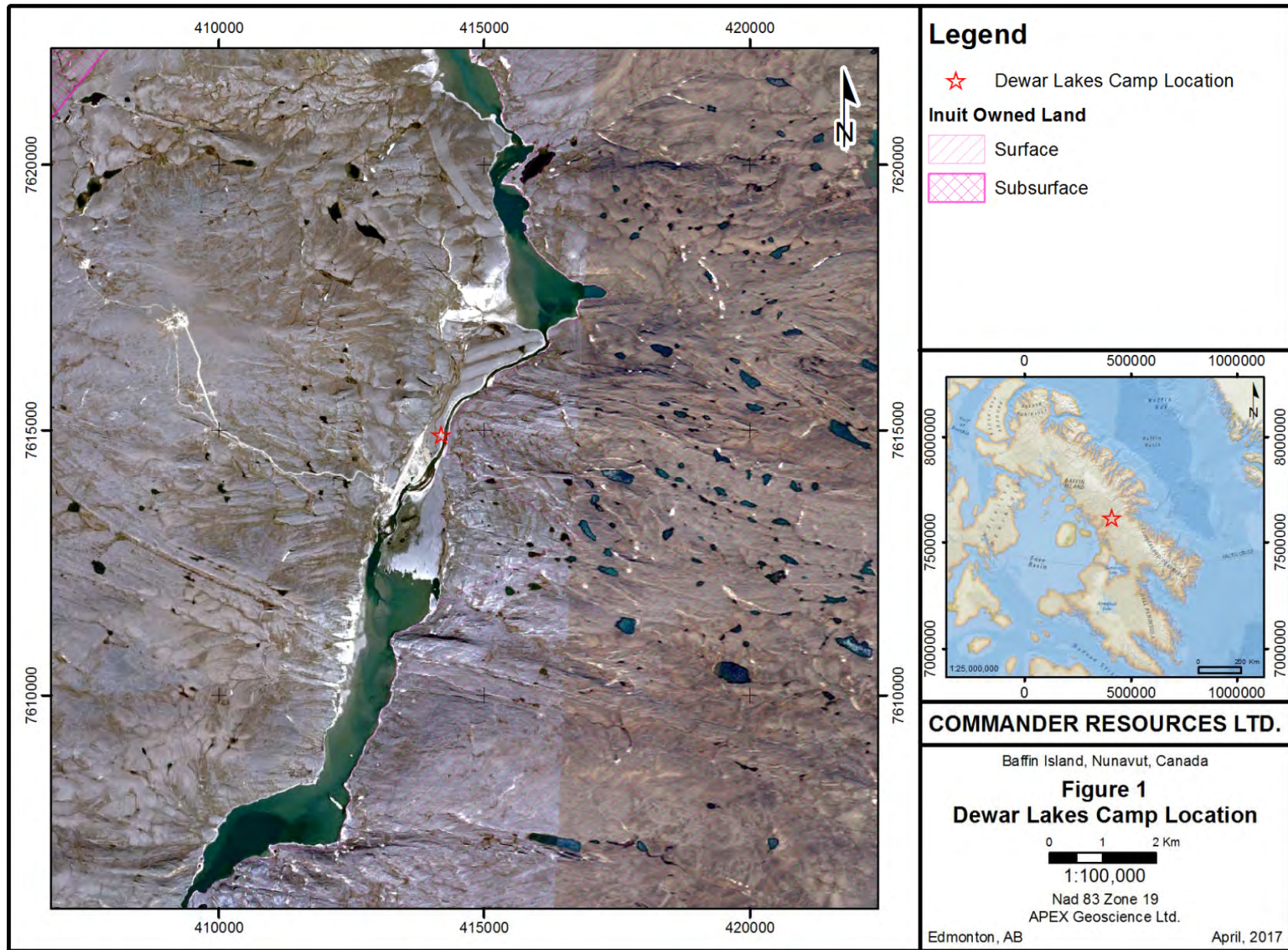


## 7 Emergency Contact Information

Table 7.1: Emergency Contact Information

Contact	Telephone Number
24 Hour Spill Report Line	867-920-8130
Robert Cameron, President and CEO, Commander Resources Ltd.	(604) 685-5254 (office) (778) 989-1501 (cell)
INAC Water Resources Manager	(867) 975-4550 (Iqaluit)
INAC Field Operations Manager	(867) 975-4295 (Iqaluit)
INAC Resource Management Officers (Qikiqtani Region)	(867) 975-4296 (Iqaluit)
INAC Water Resource Officers (Qikiqtani Region)	(867) 975-4289 (Iqaluit)
Government of Nunavut Department of Environment	(867) 975-7700 (Iqaluit)
Department of Fisheries and Oceans (Central and Arctic Region)	(867) 979-8000 (Iqaluit)
Department of Fisheries and Oceans (Central and Arctic Region) Habitat Impact Assessment Biologist	(867) 979-8007 (Iqaluit)
Nunavut Water Board	(867) 360-6338 (Gjoa Haven)
RCMP	(867) 924-0123 (Clyde River) (867) 928-0123 (Hall Beach)
Qikiqtani General Hospital	(867) 975-8600 (Iqaluit)
Stanton Regional Hospital	(867) 920-4111 (Yellowknife)
Medevac (Yellowknife)	(867) 873-5161
Kivalliq Air - 27/7 Air Medical Line (Qikiqtani Office)	(867) 979-3970 (Iqaluit) (877) 440-8244 (Toll Free)
Air Tindi	(867) 669-8212 (Yellowknife)
Discovery Mining Services	(867) 920-4600
Camp Satellite Phone	TBA
Helicopter Satellite Phone	TBA

## Appendix 1: Figures



## Appendix 2: Seasonal Camp Shutdown Inspection Record

Dewar Lakes Camp Abandonment and Restoration Plan

Area	Complete	Comment	Inspector
<b>General Camp area</b>			
General camp area inspected for any waste, spills or contamination			
General camp area secure for winter			
All combustible and non-recyclable waste incinerated			
All non-combustible waste prepared for removal			
Any unnecessary or excessive vegetation damage			
<b>Buildings and Content</b>			
All tents and building complexes secured for the winter and cleared of any debris.			
All office equipment; furniture; kitchen equipment; recreational equipment and other mobile heavy equipment will be winterised and secured			
Any equipment not capable of withstanding the harsh winter conditions will be removed			
Area inspected for petroleum spills or contamination.			
<b>Water Supply System</b>			
Water pumps, filtering systems, water lines and any other equipment associated with the water supply system drained and winterised			
Water pump shed will be secured.			
Area inspected for petroleum spills or contamination.			
<b>Sewage System</b>			
Greywater system drained (ie. no greywater remaining in the discharge pipe).			
Greywater sumps treated if required, filled and recontoured			
Privy Pits treated with lye and winterized			
Privy Pits secure and cleared of any debris			
Area inspected for petroleum spills or contamination.			
<b>Waste Incinerator</b>			
Incinerator Fuel supply shut off using all valves.			
Incinerator Fuel in appropriate and functional secondary containment adjacent to the incinerator			
Area inspected for petroleum spills or contamination.			
Incinerator area cleared of any debris.			
<b>Electrical System</b>			
Generator shack and surrounding area inspected for signs of spills and remaining wastes such as oil and grease.			
Generator shed is lined with enviromat in the event any external spills go unnoticed			
Generator drained of fuel and winterized			
Generator shack secured for winter			
All electrical wires, plugs and sockets which remain in their installed locations are safe and secure			
All electrical cords temporarily connected to a buildings or machinery unplugged, rolled and stored			
<b>Camp Heating Systems</b>			
Each 205 L fuel barrel attached to respective tent or building secured and within secondary containment			
Any remaining fuel in lines will burned out.			
Empty propane cylinders ready for transport for refilling or recycling.			
Any sleeping quarters converted to electric heat are secured			
<b>Petroleum Products and Storage Facilities</b>			
All Fuel stored in appropriate and functional secondary containment			
All Fuel storage areas clearly marked in the event snow clearing activities are required during spring camp opening			
All Fuel storage areas GPS location recorded			
All Fuel labelled properly			
Area inspected for spills or contamination.			
Fuel storage area cleared of any debris.			
<b>Chemicals and Hazardous Waste</b>			
All chemicals stored in appropriate building or on within appropriate functional secondary containment			
All household cleaners properly secured and stored in kitchen and dry.			
All empty bags/containers removed for proper disposal			
Any remaining waste fuel, oil and grease stored in approved and labelled containers for reuse during summer operations.			
Any hazardous waste that cannot be reused properly stored, sealed, labels, and prepared for removal			
Area inspected for spills or contamination.			
Area cleared of any debris.			
<b>Spill Response Kits</b>			
Spill kit inventory performed			
Spill kits not needed over winter relocated to secured building			
Spill kits needed over winter (ie. for the remaining petroleum areas) properly stocked and secure			
<b>Emergency Response</b>			
Fire extinguishers in working order and secure in all necessary locations			
Smoke/CO2 detector in working order and secure in all necessary locations			
Fire extinguishers used prepared for removal for refilling			
<b>Transportation</b>			
Transport areas including air strips, helipads, ATV trails, docks and footpaths inspected for spills or contamination.			
Vehicles remaining onsite moved into secure buildings			
Vehicles remaining onsite winterized			
<b>Drill Sites</b>			
Diamond drills dismantled and ready for demobilization or secure in designated storage area			
Diamond drills remaining on site winterized			
Any drill casing unable to be removed flush cut so as to not pose a hazard			
Drill sites restored and inspected for any waste, spills or contamination			
Drill sites photographed before drilling and after restoration			
<b>Documentation</b>			
Proper documentation and approvals for all inert and Hazardous waste transport and receiving			
Notification to all required authorities of pending seasonal shut down			
Baseline samples (ie. water, soil, air quality) collected and all data recorded			
Inspections recorded, dated and signed			
Photos taken of camp, drill sites, fuel caches and any other important locations/items			
Photos of drill lay down storage area			
GPS coordinates recorded for camp, fuel storage areas, drill sites, wildlife or habitat sightings, Archeological/paleontological sites or any area/items of interest			
Descriptions recorded for all wildlife or habitat sightings, Archeological/paleontological sites or any area/item of interest			
Year-end inventory of all equipment and buildings left on site			
List of all equipment, items and repairs required for next operating season			

### Appendix 3: Example Camp Inventory Record



# Dewar Lakes Camp Abandonment and Restoration Plan

## Seasonal Camp Shut Down Inventory

### First Aid Tent

Container	Item	Quantity
First Aid Box 1 -	Bandages, Gauze, Pads	
	Telfa bandages	
	Bag of stick on bandages	
	Cut to size stick on bandages	
	Butterfly bandages - size -S,M,L	
	Triangle bandages	
	Tensor bandages with padding	
	Lightweight tensor bandages	
	Brown tensor bandage for sprains	
	2x2 gauze	
	2x2 telfa gauze	
	4x4 gauze	
	4x4 telfa gauze	
	6x6 gauze	
	6x6 telfa gauze	
	Abd pads	
	4x4 Telfa pads	
	Eye patch	
	Small burn kit with burn bandages	

### First Aid Box 2 - Tools

	Scissors	
	Tweezers	
	Rubber bandage for hemmorage	
	Magnifying glass for eye injury	
	Eye wash cup	
	Wooden tip Q tip	
	Sami splints	
	Mesh mettle for making splint for hand/arm injury	
	Each large and small hockey tape	
	Thermometer	
	Cold paks recycle type	
	Hot paks crush type instant	
	Cold paks crush type instant	
	Set of adjustable collars	
	Pair disposable gloves - s,m,ex large	
	Tongue depressors	
	Finger tube cage for lacerations	
	Finger tube gauze	

### First Aid Box 3 - Other Items

	Patient Assessment forms	
	Bottle of Savon solution	
	Bottle of Peroxide	
	Bottles of Saline solution	
	Epi pen	
	Stitch kit with surgical needle and thread	
	Emergency dental kit	
	Vomit bags	
	Vomit extractor hand pump	

Container	Item	Quantity
First Aid Box 4 -	Large Items	
	D size oxygen tank	
	E size oxygen tank	
	H size oxygen tank	
	Regulator for small tanks	
	Regulator for larg tanks	
	Ventalation masks	
	Plastic Spine Board	
	Spider Straps for the Spine Board	
	Head Immobilizer for the Spine board	
	Metal cage basket for the Spine Board	
	Felt grey blankets	
	Pillows	
	Kidney dishes/ bed pans	

### First Aid Box 5 -


### Needed For Next Season






# Dewar Lakes Camp Abandonment and Restoration Plan

## Seasonal Camp Shut Down Inventory

### Kitchen Tent

Container	Item	Quantity
<b>Kitchen Box 1 - Dishes, Cutlery, Cooking Utensils</b>		
	Dinner plates, dessert plates, bowls	
	Coffee cups	
	Juice cups	
	Forks, spoons, butter knives	
	Steak knives	
	Paring Knives	
	Cutting knives	
	Cutlery trays	
	Serving spoons	
	Slotted serving spoons	
	Wooden spoons	
	plastic spatulas	
	Whisks	
	Can openers	
	Cutting boards	
	Tongs	
	Disposable drinking cups	
	Tupperware storage containers	

### Kitchen Box 2 - Cookware, Bakeware

	Square cake pans	
	Round cake pans	
	Pie pans	
	Cookie sheets	
	cake cooling rack	
	Bread loaf tins	
	non stick fry pan	
	Large metal bowls	
	Small metal bowls	
	Soup pots with lids	
	Large pots with lids	
	Small pots with lids	
	5 gallon galvanized pot	
	2 gallon galvanized pot	
	1 gallon galvanized pot	
	Sauce pan with lid	
	Omelet pan with lid	
	Roasting pans with lids	

### Kitchen Box 3 - Small Appliances & Cleaning

	Metal sieves	
	Plastic sieves	
	Quisenaar with grating and slicing blade	
	Kitchen aide mixer	
	Coffee Makers	
	Electric kettle	
	Toaster	
	Pump style coffee thermos	
	Clothes pins	
	Hand pump for large water bottles	

Container	Item	Quantity
<b>Kitchen Box 4 - Large Kitchen Items</b>		
	Stand up fridge	
	Propane stoves	
	Overhead fans	
	Grease traps for under sinks	
	Water cooler	
	Chest freezers	
	Barbeque	
	Metal brush for BBQ grill	
	Folding tables	
	Folding chairs	
	Plastic bins for holding vegetables	
	microwave	
	Floor mats	

### Kitchen Box 5 - Cleaning

	Teatowels	
	Dishtowels	
	Rags	
	Dish racks	
	Scrub brushes	
	Rubber gloves	
	Liquid handsoap	
	Smoke/CO2 Detectors	
	Brooms	
	Dust Pans	
	Garbage Bins	
	Wooden Beds	
	Foamies	

### Needed For Next Season


# Dewar Lakes Camp Abandonment and Restoration Plan

## Seasonal Camp Shut Down Inventory

### Office Tent

Container	Item	Quantity
Office Box 1 - Safety Gear		
	Safety glasses	
	Ear plugs	
	Hard hat ear defenders	
	Safety goggles	
	Dust masks	
	Respirator masks	
	Respirator filters	
	Bug repellent	
	Bear spray	
	Plastic rain suits	
	Mosquito coils	
	Air horns	
	Safety vest	
	Orange gloves	
	Leather gloves	
	Rubber gloves	
	Cloth gloves	

### Office Box 2 - Field Gear

	Flagging	
	Packing tape	
	Nylon rope	
	Field books	
	Rock sample cards	
	Till sample cards	
	Core sample cards	
	Personal FA kits	
	Sample tags	
	Sharpies	
	Cable ties	
	Security seals	
	Rope chains	
	Scale	
	Electrical power bars	
	Surge protector	
	Measuring tape	

### Office Box 3 - Office Supplies

	Binders	
	Stapler	
	Staples	
	White board	
	Dry erase pens	
	Pens	
	Pencils	
	Volt meter	
	3 hole punch	
	Push pins	
	Cameras	
	Printers	
	Printer paper	
	Router stand	
	Router booster	
	Cordless phones	

Container	Item	Quantity
Office Box 4 (freezables to be sent out for storage)		
	Epoxy	
	Enamel paint	
	Wet coat tree paint	
	Marker paint	
	Printer ink	

### Office Box 5 -


### Needed For Next Season
