

October 16, 2013

**CONFIDENTIAL**

Mr. Steve Potts  
Mr. Eric Norton

**Commander Resources Ltd**  
11<sup>th</sup> Floor, 1111 Melville Street  
Vancouver, BC V6E 3V6

**Subject: Securing of Camp Site at FOX-3 Dewar Lakes, Nunavut – Final Report**  
**(O/Ref.: CO 3666)**

---

## **1 Introduction**

As a result of vandalism, the Commander Resources camp site in Dewar Lakes sustained damages to its structures and huts, exposing several items to outdoor conditions and wind dispersion, while compromising the value of equipment left unsecured.

Biogenie notified Commander Resources (CR) of the camp conditions in early September 2013, following up with a cost proposal and an action plan. An agreement was reached between the two parties for Biogenie to proceed with securing the camp site.

The present report provides details on the field work that was performed, followed by a photographic log illustrating conditions at the site before and after corrective actions were taken.

## **2 Project Objectives**

The objectives of the project were to secure valuable equipment on-site, to repair some of the damage incurred on huts, and to prevent any items from further wind dispersion. It was agreed that Biogenie would spend one (1) full workday at the camp site with the scope to complete the maximum possible work, giving priority to the Client's requested items.

## **3 Project Schedule**

Taking into consideration flight and aircraft availabilities, staff recruitment, accommodations and favourable weather conditions, the project schedule that was implemented is summarized in Table 3.1.

Table 3.1. Project Schedule

Date	Action/ Task	Comments
September 16-19, 2013	Project preparation	<ul style="list-style-type: none"> <li>▪ Procurement of tools and supplies for the Work</li> <li>▪ Communications</li> <li>▪ Recruitment of labour</li> <li>▪ Flight and hotel booking</li> <li>▪ Final cost adjustments (i.e. charter flight)</li> </ul>
September 20, 2013	Mobilization of Field Supervisor to Iqaluit	<ul style="list-style-type: none"> <li>▪ 8.5 hours of travelling time</li> </ul>
September 21, 2013	Mobilization of crew and equipment to site; Field work; Demobilization of local labour to Iqaluit	<ul style="list-style-type: none"> <li>▪ A total of 10 hours spent in Dewar Lakes</li> <li>▪ A total of 4 hours of travelling time</li> </ul>
September 22, 2013	Demobilization of Field Supervisor to Montreal	<ul style="list-style-type: none"> <li>▪ 8 hours of travelling time</li> </ul>
September 24, 2013	Field work summary report	<ul style="list-style-type: none"> <li>▪ Client was notified on crew mob/demob and main work items completed at site</li> </ul>

## 4 Field Work

### 4.1 Valuable equipment

The actions taken to secure exposed pieces of valuable equipment are given below.

#### 4.1.1 Water/fuel pumps

As it was not possible to move the pumps from their current location, the pumping system was boarded up with bed frame plywood pieces and insulation.



Figures (1) and (2) – Barricading the pumping system

### 4.1.2 Generators

The two generators found on-site were secured by fixing the shed that is used to house them. The doors to the shack and attachment were reinstalled and properly closed, while all structure holes were covered.



Figures (3) and (4) – Securing the shack housing the generators

### 4.1.3 Incinerator

A box was made around the incinerator to protect it (Figures 5 and 6).



Figures (5) and (6) – Protection box around the incinerator

### 4.1.4 Communication systems

Of the two satellite dishes found on-site, the antennas and electronic boxes were missing. The smaller dish was detached from its tripod and the two pieces were brought back. It was not possible to disassemble the second dish with the tools available on-site; the assembly was too large to fit the plane and the dish was left at the site. Other pieces of communication systems found were two printers, however both were broken.



Figure (7) – Satellite dishes

#### 4.1.5 Skidoo

The skidoo was found in poor condition, with only the frame and one ski remaining. It was left as is.



Figure (8) – Skidoo frame, with 1 ski

### 4.2 Huts and Sheds

Different corrective actions were taken for the huts and sheds at the camp, depending on the condition of each structure.

#### 4.2.1 Kitchen/ Dining Hut

The kitchen/ dining hut tent was repaired with cords and pieces of wood salvaged on-site. Kitchen related items and other material were moved to be stored in the kitchen.



9



10

Figures (9) and (10) – Boarding up kitchen/dining hut torn tent sections (side)



11



12

Figures (11) and (12) – Restoring kitchen/dining hut tent (top)



13



14

Figures (13) and (14) – Boarding up kitchen/dining hut torn tent sections (front)

#### 4.2.2 Partially damaged huts and sheds

Structures that were partially damaged were secured by having their doors reinstalled, wall

openings (i.e. where windows used to be mounted) boarded up, and any tent rips covered with tarps and ropes. The silo door and roof hatch were repaired and properly closed.



15



16

Figures (15) and (16) – Boarding up door and window openings



17



18

Figures (17) and (18) – Boarding up openings and tears on tent



19



20

Figures (19) and (20) – Covering tears on tent (view from interior/ exterior)

### 4.2.3 Severely damaged huts

Items formerly contained in huts that were irreversibly damaged were removed and placed in protected spaces (huts or sheds). In one case, the damaged hut structure was covered with tarps and secured with wood boards.



Figures (21) and (22) – Securing damaged hut

### 4.3 Miscellaneous items

Several scattered debris on-site were collected or stored away in order to prevent further damage and wind dispersion.

To mitigate any potential environmental risks, bungs were put back in place on open empty or almost empty drums. An effort was made to gather up all drums when their weight allowed doing so.

Miscellaneous scattered items were collected off the ground and open (i.e. damaged) huts and moved to be stored in secured spaces.

Wood was generally salvaged for repairs on-site, while broken pieces were stacked together in piles and covered with a tarp.

## 5 Comments and Observations

It is assessed that the mandated work completed will act as a deterrent towards further vandalism acts and thefts. Biogenie's interactions with residents of the local community indicate that the camp is falsely believed to have been abandoned. To prevent any future unauthorized access and damage, it is advised that Commander Resources gets in contact with officials in the surrounding communities to inform them of the vandalism problem and to make the status of the camp known to the public. Another alternative is to collaborate with local

communities, for example through the local hunting association, to assist with periodic checks and photographic reports of the site.



## **PHOTO LOG**

*COMMANDER RESOURCES CAMP  
Dewar Lakes, NU*

**SEPTEMBER 21<sup>ST</sup>, 2013  
PHOTOGRAPHIC LOG**



Figure 1 – Exposed incinerator



Figure 2 – Exposed water and fuel pumps



Figure 3 – Partially damaged hut



Figure 4 –Damaged hut and exposed interior



Figure 5 – Ripped tent



Figure 6 – Damaged huts; general site view



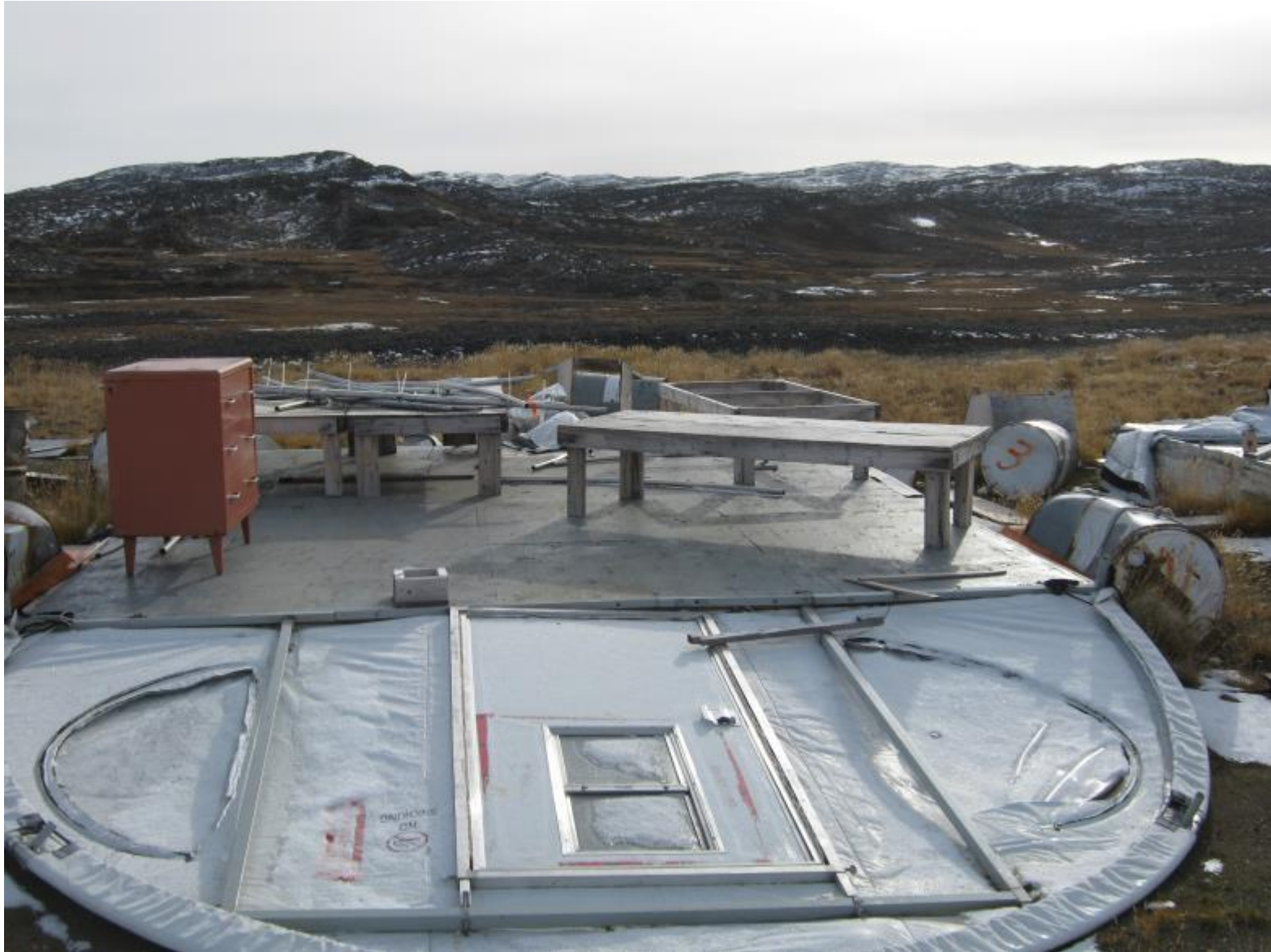


Figure 7 – Damaged hut and exposed interior



Figure 8 – Camp structures and general site view

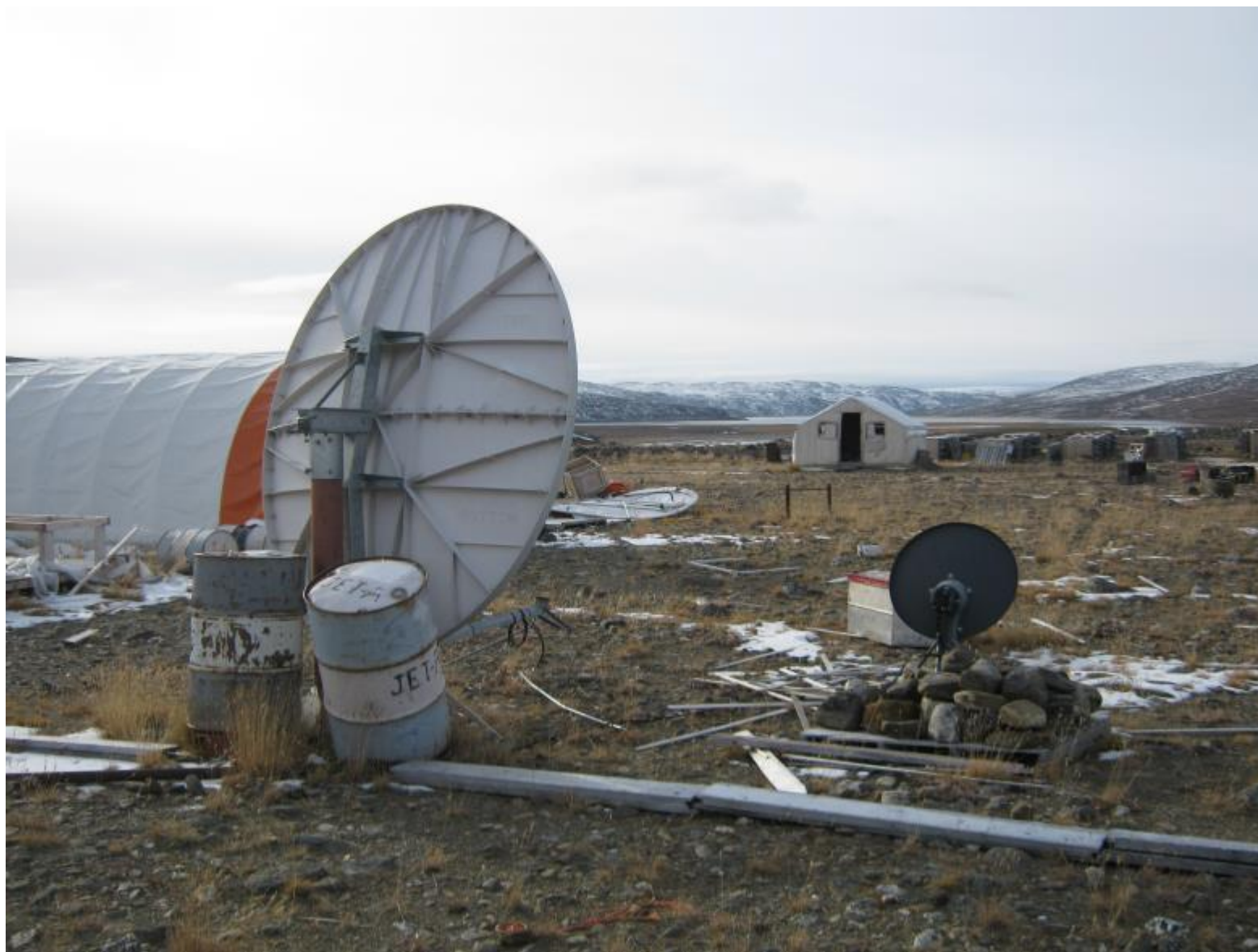


Figure 9 – Satellite dishes; general site view



Figure 10 – Damaged hut and exposed items; general site view



Figure 11 – Salvaging wood for repairs; general site view



Figure 12 – Ripped tent opening on hut



Figure 13 Torn tent and detached door on hut



Figure 14 – Torn tent on hut





Figure 15 – Torn tent sections on hut



Figure 16 – Loose kitchen/ dining hut tent



Figure 17 – Shed and attachment with open/ missing doors



Figure 18 – Generator 1 in shed



Figure 19 – Generator 2 in shed



Figure 20 – Boarded up hut



Figure 21 – Boarding up water and fuel pump system



Figure 22 – Boarded up hut





Figure 23 – Boarding up torn tent section on hut



Figure 24 – Damaged hut covered with tarp



Figure 25 – Door and roof hatch repaired and properly shut



Figure 26 – Repaired (door) shed



Figure 27 – Removed small dish; large dish left at site



Figure 28 – Skidoo frame and 1 ski



Figure 29 – Secured hut (door and openings)



Figure 30 – Tent covered with tarp





Figure 31 – Boarded up hut openings



Figure 32 – Boarded up hut openings



Figure 33 – Boarding up incinerator



Figure 34 – Shed and attachment doors reinstalled and shut