



RAE COPPER PROJECT

Project Description and Application Supporting Materials

for

Type B Water Licence

Class III Land Use Licence

Class A Land Use Permit

October 2024

RAE COPPER PROJECT

Project Description and Application

Supporting Materials

Table of Contents

Table of Contents	1
List of Figures	1
List of Tables.....	2
1. Introduction	3
2. Project Description Overview	3
3. Timing.....	8
4. Location and Access.....	8
5. Existing Environment	9
5.1 Physical Environment	9
5.2 Biological Environment	10
5.3 Socio-Economic Environment	10
6. Potential Environmental Impacts of the Project and Proposed Mitigations	11
7. Closure and Reclamation.....	12
Appendix A - Rae Copper Mineral Claims Held by WCM	13
Appendix B - Authorizations	16
Appendix C - Potential Project Impacts and Proposed Mitigations	17
Appendix D - Potential Lake Water Sources and Calculated Annual Withdrawal Capacities	18

List of Figures

FIGURE	PAGE
Figure 1. Rae Copper Project Map.....	4
Figure 2. Reservoir-based Drill Freshwater Recirculation Circuit for Water Use Minimization (Source: RainCoast Environmental Services Ltd.)	6

List of Tables

TABLE	PAGE
Table 1. Maximum Anticipated Exploration Camp Temporary Structures	5
Table 2. Maximum Anticipated Quantities of Fuel	7
Table 3. Maximum Anticipated Equipment.....	7

1. Introduction

White Cliff Minerals Ltd. (WCM) is a publicly traded Australian-based (WCM on the Australian Stock Exchange) and Canadian-registered mineral exploration company that owns a 100% interest in Rae Copper Exploration Project (the Project). The Project consists of mineral claims in the West Kitikmeot Region of Nunavut on a combination of Inuit Owned Lands and Crown Lands (Figure 1 and see Appendix A for a list of WCM's mineral claims). The Project area is about 60 kilometres from the community of Kugluktuk and has a long history of mineral exploration.

WCM is applying for authorizations to allow an initial drill-based exploration program and exploration camp at the Rae Copper Project searching for copper and silver. Necessary authorizations are identified to include: a Type B Water Licence from the Nunavut Water Board (NWB), a Class III Land Use Licence from the Kitikmeot Inuit Association (KIA), and a Class A Land Use Permit from Crown-Indigenous Relations and Northern Affairs Canada (CIRNAC). These authorizations as well as other authorizations which could be required over project life are listed in Appendix B.

Prior to applying for these authorizations, this application was submitted to the Nunavut Planning Commission (NPC) for a conformity screening against any approved land use plan and a determination of whether a screening by the Nunavut Impact Review Board (NIRB) is needed. The NPC issued their conformity determination for this Project (NPC file # 150522) and the application was subsequently accepted by the NIRB for screening (NIRB Application # 125991 and File # 24EN047). This application is currently being screened by the NIRB under NIRB file # 125991/24EN047.

2. Project Description Overview

The Rae Copper Project is proposed to be a seasonal drilling-based exploration program based out of a temporary tent-based exploration camp (Figure 1).

The Project will be accessed by plane using the existing all-weather Hope Lake Airstrip or a lake summer or winter strip and/or by helicopter. Supplies may also be brought in by winter trail from Kugluktuk using low pressure vehicles (e.g. those on tracks or skids such as snowmobiles, snow cats, and sloops) as is done for other projects in the region. Within the Project area, access would primarily be by helicopter and foot, although winter trails or roads may be used when ground and snow/ice conditions permit. No all-weather roads are proposed.

The exploration camp will be comprised of temporary tent structures used for accommodations, food preparation, dining, office space, core cutting, and ablutions. Smaller structures will also be erected to house toilets (i.e., pit [outhouse], pinto, or incinerating toilets), pump house, and generators. Portable fly camps may also be seasonally used to support activities at remote locations. A full description of proposed structures, fuel, and equipment is provided in tables 1 through 3 below.

The camp will typically house around 25 people during seasonal drilling activities but could host up to 45 people when at peak activity. Camp water needs, including kitchen, showers, sinks, and core cutting, will be sourced from a nearby lake. Project wastes would include general camp wastes, greywater, toilet blackwater, core cutting and drill wastes, and ash from incineration and open burning. No landfill is proposed. A dual chambered forced air incinerator may be used to incinerate suitable wastes. Untreated wood, cardboard, and paper may also be open burnt but open burning will be minimized to the extent practical. Except for incinerated/open burnt wastes and wastes deposited in sumps, all wastes will be

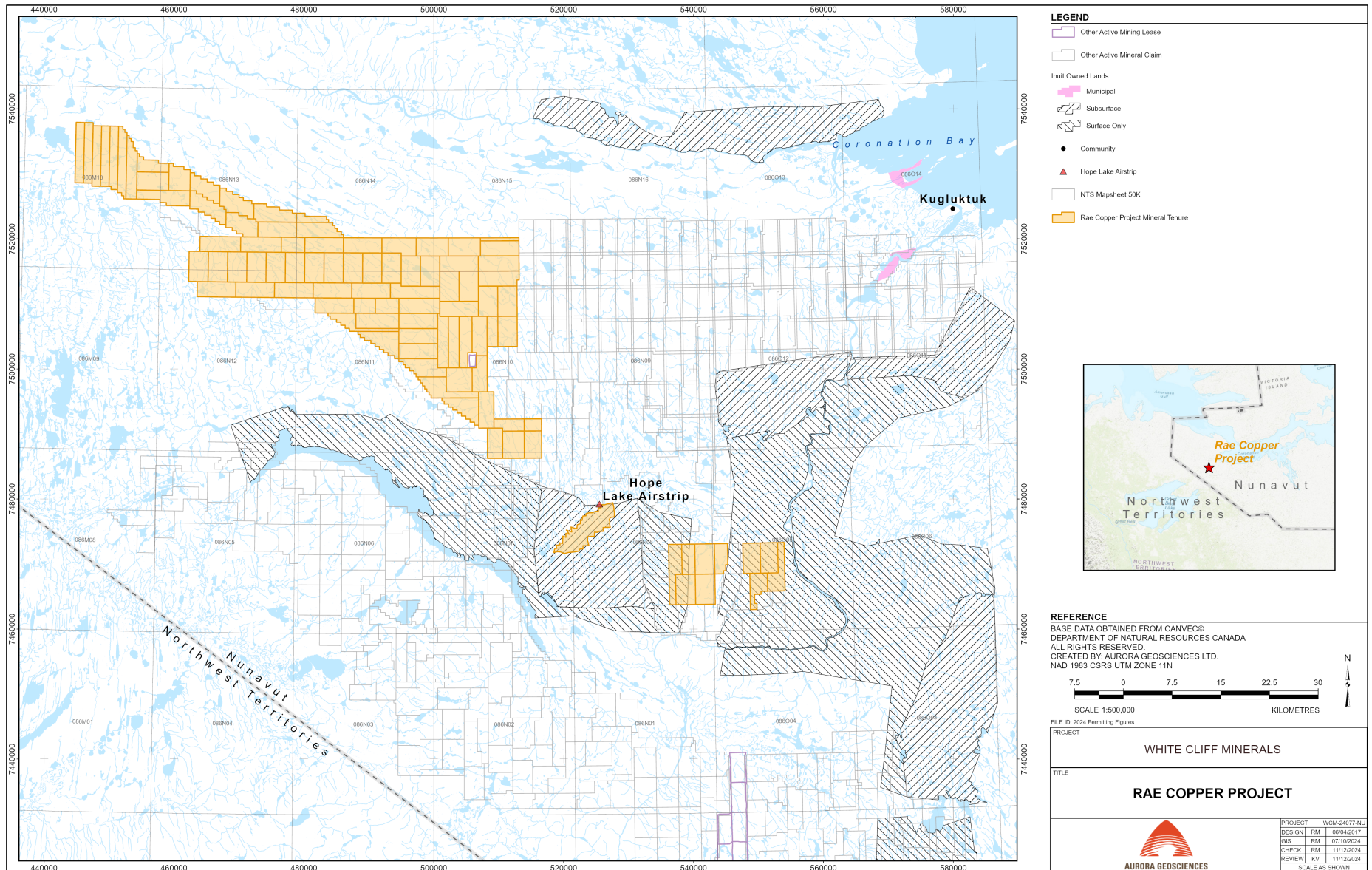


Figure 1. Rae Copper Project Map

backhauled to an approved waste management facility outside of Nunavut. Please see Rae Copper's Waste Management Plan for further details.

A list of the proposed maximum number of structures at full camp development for both the main camp and any potential Fly Camp is provided in Table 1.

Table 1. Maximum Anticipated Exploration Camp Temporary Structures

Structure	Width (m)	Length (m)	Area (m2)	Number
Main Camp Structures				
Sleepers	4.3	4.9	21.07	11
First Aid Tent	4.3	4.9	21.07	1
Kitchen/Dining	4.3	9.8	42.14	1
Dry's (Men + Women)	4.3	9.8	42.14	2
Core and Cut Shacks	4.3	4.9	21.07	3
Office	4.3	4.9	21.07	1
Toilet Facilities (pit toilet, pactos, incinolets or similar)	4.3	4.9	21.07	1
Generator/Pump/Incinerator Shacks	4.3	4.9	21.1	3
Maintenance/storage Tent	7.3	9.1	66.4	1
Potential Fly Camp				
Sleepers	4.3	4.9	21.1	3
Kitchen/Dining	4.3	4.9	21.1	1
Office/dry	4.3	4.9	21.1	1
Pit Toilet (or other)	2	2	4	1

Exploration will primarily be undertaken using diamond drills, although similarly sized reverse circulation (RC) drills may be utilized. The RC drill, like a Hornet, does not require water. Other activities typically associated with exploration activities would also be undertaken, such as prospecting, geological mapping, geophysical surveying, environmental monitoring, archaeological assessment and potentially baseline studies of the existing environment. Drill support and movement will be by helicopter or overland by winter trail or road. Drill water will be sourced from waterbodies proximal to drill targets and drill waste will be discharged to sumps, typically nearby natural depressions.

Project water use for camp activities, by drills, and related to the on-land application of water for any winter trail, road, or drill pad development will cumulatively remain below 299 m3/day. Although a daily water allotment of up to 299 m3/day is proposed, WCM anticipates that daily water use will rarely exceed 100 m3/day. Camp water use is expected to range from 1-15 m3 for a combination of kitchen, shower, sink, and core cutting, with an average use of 5 m3/day expected on days camp is open. Drill water usage can be highly variable, ranging from less than 5 m3/day/drill up to 80 m3/day/drill depending on efficacy of water return and water recirculation practices, but average cumulative drill water use is expected to be less than 90 m3/day.

When needed, a portable water reservoir for freshwater recirculation may be used to significantly minimize drill water use by eliminating the volumes of water typically "used" by recirculation of

freshwater to a natural waterbody. A diagram of the reservoir-based drill water use circuit is provided in Figure 2.

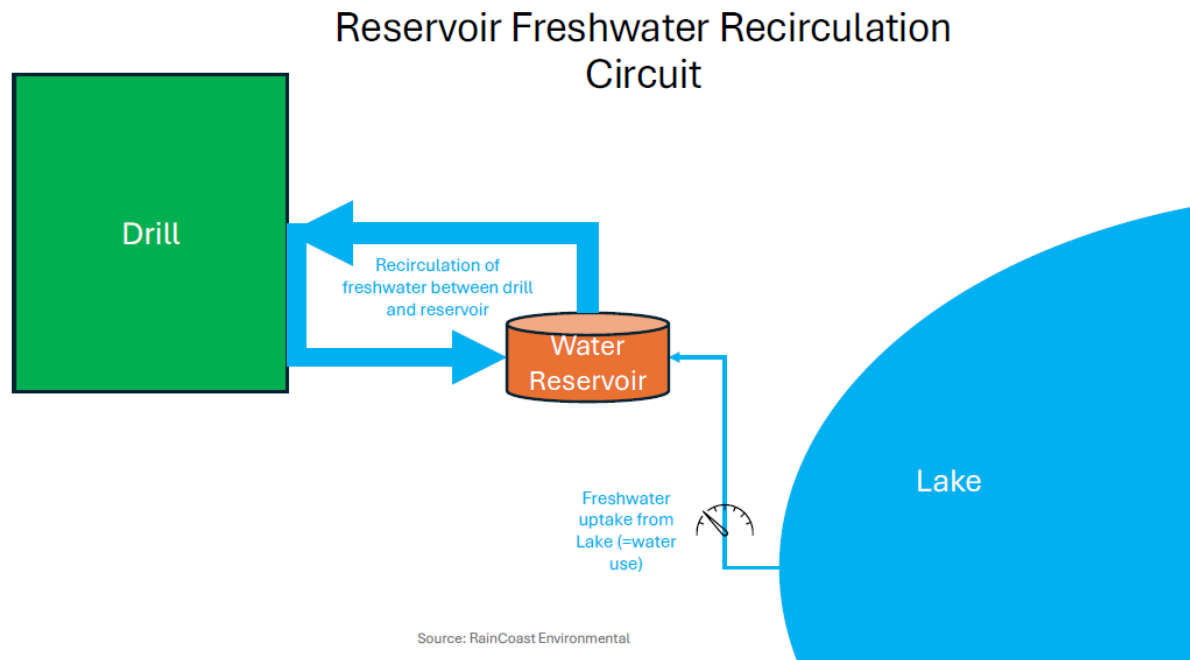


Figure 2. Reservoir-based Drill Freshwater Recirculation Circuit for Water Use Minimization (Source: RainCoast Environmental Services Ltd.)

All water will be sourced from lakes or streams near to where the water will be used. Water withdrawal protocols will follow relevant DFO guidance and all uptake lines will be equipped with appropriately sized screens to prevent the entrainment or impingement of fish. WCM will also limit under ice water withdrawal to no more than 10% of available water capacity as determined based on DFO's "Protocol for Winter Water Withdrawal from Ice-covered Waterbodies in the Northwest Territories and Nunavut" or as estimated in the Land and Water Boards of the Mackenzie Valley's "Technical Reference Document for the Method for Determining Available Winter Water Volumes for Small-Scale Projects" (MVLWB 2021). Please also see impact mitigation measures outlined in Appendix C of this document, which were also submitted to the NIRB for screening. Available water source capacities for each lake within the area has been estimated based on lake surface areas multiplied by a depth of 10 cm and values are provided in Appendix D. Stream water use would be limited to < 10% of stream flow and cumulative daily water use across all water sources (lake and stream) will not exceed 299 m³/day, as previously discussed. These water withdrawal limits will ensure that there are no significant impacts on water quantity related to the proposed activities.

Camp water will be sourced from a nearby lake using a small water pump to intermittently fill a water storage tank with raw lake water while camp is in use. Potable water may be filtered and/or treated with chlorine, ozone or other standard methods for drinking water treatment if and as determined necessary. Camp greywater and core cutting wastewater will be discharged to small nearby sumps. If pit toilets (outhouses) are used, these blackwater pits (and any other dug sumps) will be backfilled on cessation of use. All wastes will be managed as described in the Waste Management Plan. Wildlife attractants such as food and food waste will be securely stored in a manner to prevent wildlife access until either used or disposed of.

Drilling will be conducted with the use of diamond drills, although reverse circulation (RC) drills may be utilized instead if appropriate. Small RC drills, like the Hornet, do not require water. Drill support and movement will be by helicopter or overland by winter trail or road. Drill water will be sourced from nearby lakes using a small pump which will periodically fill a water storage tank used to supply the drill. Drill waste will be discharged to a nearby natural depression or dug sump.

A camp fuel cache will be established with capacity for up to 400 barrels of aviation fuel (for helicopters and/or planes), 400 barrels of diesel (primarily for the drills and camp power supply and heating), as well as smaller quantities of propane and gasoline. Remote fuel caches may be established to support drilling activity, and appropriate notifications would be filed with the Kitikmeot Inuit Association and/or Crown Indigenous Relations and Northern Affairs Canada (CIRNAC). See Table 2 for maximum anticipated Project fuel quantities. All fuel is to be stored in compliance with applicable regulations and spill kits will be on hand at each fuel storage location. Any spills will be cleaned up at the time of occurrence. Please see the Rae Copper Spill Contingency Plan for further details.

Table 2. Maximum Anticipated Quantities of Fuel

item	Maximum Quantity	Number of containers	Capacity of tank	Type of tank	Location
Diesel	80,000 L	400	205L	Barrel or ECCC Approved Tanks/containers	Camp, Remote Caches, Drill Sites
Aviation Fuel (Jet A and/or JetB)	80,000 L	400	205 L	Barrel	Camp, Remote Caches, Drill Sites
Gasoline	4,100 L	20	205 L	Barrel	Camp, Remote Caches, Drill Sites
Propane	1,800 kg	40	45 kg	100 lb cylinders	Camp
Other: various lubricants, including drilling fluids	2,000 L	Varies	1 L to 22 L	tubes, cans, and pails	Camp, Drill Sites

All sumps, cuttings disposal, and fuel storage will be located a minimum of 31 m from the Ordinary High Water Mark (OHWM) of the nearest waterbody unless otherwise approved by the Inspector.

The equipment to be used to support Project activities is outlined in Table 3.

Table 3. Maximum Anticipated Equipment

Common Name	Equipment Type	Typical Use	Quantity	Unit Weight (kg)
Bell 407 helicopter or substitute	Helicopter	Equipment and crew movements	1-2	1300
Diamond Drill Boyles 25A/37 or similar	Drill	Drill-testing potential carbonatite associated REE mineralization	1 - 3	9,600 (including rods and casings and cuttings removal)
Reverse Circulation Drill RC Hornet or similar	Drill	Drill testing mineralization to infill REE drilling	1 – 2	4,350 (all components)
33 kw diesel generator or similar	Camp	Electrical power supply	2	800
Inciner8 dual-chamber incinerator or similar	Camp	Disposal of combustible waste	1	1000
Incinolets (if used) or substitute	Camp	Toilet	3	100

Snowmobile	Light vehicle	Camp and activity support/personnel movement	8	200
ATV and trailer or UTV	Light vehicle	Use on all-weather strip to move materials	4	200
Boat (zodiac or similar)	Light vehicle	Camp and activity support/personnel movement	2	300
5 kw gas generator or similar	Small generators or pumps	Electrical power supply and backup	4	100
Water pumps	Small generators or pumps	Camp, diamond, and ice development	4	10
Kubota Tractor B26 or similar	Heavy equipment	Construction and maintenance of ice trails and airstrip, digging sumps	1	1050
Snow cat	Light vehicle	Camp and drill support	1	6,400
Chieftain or similar	Heavy equipment	Winter/Ice low pressure transport	1	37,100
Sloop or similar	Heavy equipment	Winter/Ice low pressure transport trailer/sled	1	4,500
Loader	Heavy equipment	Winter trail/road ice maintenance	1	6,800 kg ea.

3. Timing

Exploration activities will be undertaken seasonally, typically in summer and late winter, and the exploration camp would be temporarily closed between uses. Seasonal activities would extend from a few weeks to a few months in length each season.

To minimize potential Project impacts, the exploration camp will also be annually closed, and all exploration activity discontinued, during both the calving (May 28 to July 3) and post calving (June 21 to July 3) periods of the Blue Nose East Caribou herd.

WCM is applying for a 5-year Land Use Permit term which would have a 2-year potential for extension, and a 7-year water licence term within which to conduct exploration activities. Aligning these timeframes would minimize potential future regulatory burden associated with separate submissions to the Nunavut Planning Commission and Nunavut Impact Review Board should a water licence renewal and land use permit replacement be requested in future.

4. Location and Access

The Rae Copper Project is located within the West Kitikmeot Region of Nunavut. The local study area (the area within which exploration may take place) is about 60 to 70 kilometres southwest of the community of Kugluktuk and in an area with a long history of mineral exploration. WCM's mineral claims in this area overlaps surface Inuit Owned Land and both surface and sub-surface Crown Lands (Figure 1).

An exploration camp would be established near areas of mineralogical interest and plane access, to minimize helicopter use and winter overland transit. The camp location will be established on dry durable ground near a water source to supply camp water needs and in a location that allows fixed-wing air access. Potential camp locations were evaluated based on these parameters as well as an assessment by a pilot (to evaluate potential landing locations) and a survey by an archaeologist for potential

archaeological conflicts which were conducted in September of 2024. Of the alternatives assessed, a camp near the existing all-weather Hope Lake Airstrip (roughly 116° 24' 34" W and 67° 25' 50" N) is currently considered the best alternative as it would allow reliable year-round plane access, is in an already-disturbed area, reduces overall transport and movement of materials between the airstrip and an alternate camp location, allows positioning of the temporary camp without creating archaeological conflicts, and is accessible to WCM's claims (where drilling will take place). An alternate camp location may be near Bornite Lake (~ 116 ° 50' 32" W and 67 ° 37' 07" N). WCM will evaluate these locations further in their first year of activity, and should an alternate location prove more suitable, the camp may be relocated.

Small temporary fly camps may also be established seasonally near remote drill sites to support remote drilling activities. Archaeological surveys would be conducted of any fly camp location prior to their establishment to ensure archaeological conflicts are avoided.

Project access will primarily be by plane via Yellowknife, Kugluktuk, or potentially Cambridge Bay, landing on a lake equipped with floating dock on floats in summer or on a lake ice strip or the existing Hope Lake all weather airstrip on wheels or skis in winter. Alternately, the Project area can be accessed by helicopter or possibly over land by winter trail from Kugluktuk.

Within-site access will primarily be with helicopters and on foot. During winter, winter trails and roads may also be used to access nearby drill sites. Per the limitations of a Type B Water Licence, any watercourse crossings will be less than 5 m wide at the ordinary high water mark at the point of construction. No construction of all weather roads is proposed.

5. Existing Environment

5.1 PHYSICAL ENVIRONMENT

The Rae Copper Project (the Project) is located within the West Kitikmeot Region of Nunavut. The Local Study Area (LSA; the area within which mineral exploration may take place) is about 60 km southwest of the community of Kugluktuk and in an area with a long history of mineral exploration. WCM's mineral claims in this area overlap both Surface Inuit Owned Lands and Surface and Subsurface Crown Lands and do not overlap any protected areas. The Project's Regional Study Area (RSA) encapsulates the LSA and extends to include the municipality of Kugluktuk. The RSA overlaps the Kugluk Territorial Park; should a winter trail be used to mobilize supplies from Kugluktuk, it will avoid this park.

The geology of the Coppermine District, within which the Project is located, is characterised by an easterly-trending copper-bearing belt of Meso-Proterozoic continental flood basalts and associated marine sedimentary rocks of Neo-Proterozoic age. This belt extends 80 km south from Kugluktuk, on the Coronation Gulf, and 174 km west to 64 km east of Coppermine River. The Coppermine District is best known for the 'Coppermine River Group' basalts, which feature extremely high-grade copper showings of >45% within the volcanic pile. The area was first staked in 1929 and has an extensive history of mineral exploration that boomed in the late 1960's and continued sporadically to 2010 then slowed in relation to depressed economic conditions during which time many mineral claims were released. WCM obtained a number of these claims in late 2023 and early 2024, which are contiguous with mineral claims still held by previous operators.

There is one esker located in the RSA within the northwestern aggregate of mineral claims held by WCM (on Crown Land). This esker has a length of 11 km within the WCM mineral claims and continues to the north.

The Project is located within a subarctic climate zone with annual temperatures ranging from January temperatures of -31°C to July averages of 12°C . Summers are short and cool with extended daylight periods. Winters are long, cold, and dark. Annual rainfall is generally limited.

Air quality in the area is expected to generally be good due to the remote location and minimal industrial activity, although wildfires activity can impact air quality periodically.

The area is one of contiguous permafrost, which can extend to a depth of 160 m or more and reach temperatures as low as -15°C . Areas of unfrozen ground may be found under lakes, and are called taliks.

Spring melt usually occurs in June, but lakes may continue to have ice until mid-July. Freeze-up begins in September and by late winter, lake ice thickness can reach almost 2 m. The area is one of low topographic relief with smaller lakes and streams. The most notable waterbody is the Coppermine River, which supports fishing and transportation activities in its lower reaches. Although waterbodies in the region are generally pristine in nature, natural geology and environmental inputs and flow processes can cause water quality to vary by waterbody and season (e.g., during freshet melt and high flows water quality can diminish).

5.2 BIOLOGICAL ENVIRONMENT

The Project area is located in a predominantly treeless Southern Arctic Tundra, also known as the 'Barren Grounds'. Vegetation is mainly comprised of grasses, lichens, low shrubs, mosses, and various arctic flowering plants. A limited abundance of spruce, willows, alders, and ground birch can be found in sheltered niches along the Coppermine River as far north as Escape Rapids.

Aquatic life in the lakes, rivers, and streams of the RSA include Arctic char, grayling, and whitefish. The Project area is also known to host a wide range of wildlife including the migratory barren ground caribou (specifically the Bluenose East [BNE] caribou herd), muskox, moose, grizzly bear, wolverine, Arctic fox, and wolves. A wide range of migratory and non-migratory birds are also present, including geese, tundra swan, ptarmigan, short-eared owl, peregrine falcon, rough legged hawk, gyr falcon, and golden and bald eagles.

The Project is located within the BNE caribou herd's calving and post-calving range. To avoid disturbing the caribou during these sensitive periods, WCM will not undertake any exploration activities during their calving (May 28 and July 3) or post calving (June 21 to July 3) periods, and will close the exploration camp during this time each year. For more discussion on wildlife mitigation and management measures that will be implemented to protect wildlife and wildlife habitat, see the Project's Wildlife Management and Monitoring Plan (WMMP).

5.3 SOCIO-ECONOMIC ENVIRONMENT

The Project is located within the West Kitikmeot Region of Nunavut. The LSA is approximately 60 km southwest of Kugluktuk with the broader RSA including the municipality. The LSA is in an area with a long history of mineral exploration and WCM's mineral claims overlap both Surface Inuit Owned Lands and Surface and Subsurface Crown Lands. The Project is not anticipated to have any impact on local or regional traffic patterns or human health given its location and the nature of proposed activities.

WCM is not aware of any archaeological or culturally significant sites in the LSA but will avoid any sites that become identified over time. WCM has engaged an archaeologist to conduct an impact assessment of potential camp locations and initial drilling areas and will continue to conduct archaeological assessments over the life of the Project to avoid potential as-yet-undiscovered sites.

The Coppermine River is known for its fishing, and community members hunt and fish throughout the RSA, although conversations with the Kugluktuk Hunters and Trappers Organization (HTO) have indicated use is limited within the area of WCM's mineral claims.

This area is of particular importance because it is within the calving and post calving grounds of the BNE caribou herd. To minimize potential impacts on this herd, WCM will not undertake any exploration activity during the calving (May 28 to July 3) and post calving (June 21 to July 3) periods, and will implement a wide range of habitat and wildlife protection measures as outlined in this application and in the attached WMMP. This WMMP has been provided to the Kugluktuk HTO for review, and WCM will continue to work with the HTO over the life of Project to identify wildlife and wildlife habitat management and mitigation measures that are suitable to the area as well as the scope, scale, and nature of activities.

WCM has shaped the proposed Project design, execution, impact mitigation and management, and potential Project benefits based on input, recommendations, and Inuit Qauijimajatuqangit provided by the Kugluktuk HTO, Kitikmeot Inuit Association (KIA), and the Hamlet of Kugluktuk. The most significant Project modifications resulting from this engagement has included the commitment to cease any exploration activities during the BNE caribou calving and post-calving periods, and the inclusion of a winter trail from Kugluktuk which could be used by Kugluktuk community members and/or businesses to relay materials in to site (as noted to have been coordinated for other projects operating in the area to maximize economic benefits to the community). WCM has also committed to preferential use of Kugluktuk, Kitikmeot, and Nunavut-based businesses, maximizing local employment, providing on-the-job and other training opportunities, and supporting community initiatives where requested and feasible. As a demonstration of this, in 2024 WCM sponsored a Kugluktuk community first aid course, provided helicopter support to the Kugluktuk HTO for the HTO's monitoring activities, employed a Kugluktuk community member as part of their small (3-person) July ground sampling program and 4-person September archaeological assessment, and made a concerted effort to direct project expenditures towards Kugluktuk-based businesses. At the recommendation of each of these groups, a community meeting has not yet been held, but is planned for early 2025, prior to proposed activities and at a time when there is more permitting (and thus employment) certainty. WCM will continue to work with the KIA, Hamlet of Kugluktuk, and Kugluktuk HTO to ensure engagement undertaken is appropriate, mitigation and management measures are suitable, and Project socio-economic benefits are maximized over the life of the Project.

6. Potential Environmental Impacts of the Project and Proposed Mitigations

For an overview and discussion of potential physical, biological, socio-Economic and cumulative impacts of this Project, along with the proposed mitigation measures, please see Appendix C of this document. This information was also provided to the Nunavut Impact Review Board's (NIRB's) for their screening of this Project and can be found on the NIRB's public registry under file number 125991/ 24EN047.

WCM has also developed a Waste Management Plan and Spill Contingency Plan (filed with this application) outlining waste management and mitigation measures and spill prevention and contingency measures which will be employed to minimize potential for impacts related to water and waste. Closure and reclamation plans are outlined in Section 7 of this document.

A Rae Copper Wildlife Management and Monitoring Plan has also been developed and is available on the NIRB's public registry.

With the implementation of the proposed mitigation and management measures, and the limited scale and impact of proposed activities, no significant effects environmental effects, including those related to water use or waste deposit, are predicted.

7. Closure and Reclamation

The overall abandonment and restoration goal is to return the Project areas to conditions similar to those present prior to project activities where the sites are:

- Physically stable
- Chemically inert
- Require no long-term care requirements
- Are compatible with future land use activities (including aesthetics and values)

Closure activities will include:

- the removal of all structures, equipment, fuel, materials and waste
- the clean up of any remaining spills or contaminated materials
- the backfilling of any sumps
- Stabilizing any areas potentially subject to erosion or sediment loss

The scale of closure and reclamation activities and requirements will be minimized over the life of the Project by implementation of the management and mitigation measures discussed in this document and those outlined in the Wildlife Management and Monitoring program (which outlines practises that will limit impacts to the environment and habitat), the Spill Contingency Plan (which requires that spills be addressed promptly and in full), and the Waste Management Plan (which outlines appropriate procedures for waste handling, disposal and backhaul).

To further reduce the final closure activities required, WCM will undertake progressive reclamation over the project life; closing all drill sites and fly camps as activities in those locations are completed. Drill site reclamation will include removal of all materials and fuel, removal or cutting of drill steel at ground level and sealing the drill hole, removal of any debris, and filling any hole around the drill collar created by drilling activity to prevent pooling water and potential permafrost degradation. Each drill site will be progressively closed in this manner prior to the completion of each field season. All fly camp structures and materials will be removed on fly camp closure and any associated toilet pits or greywater dug sumps will be filled in and leveled. These activities will be documented for Inspector reference.

Appendix A - Rae Copper Mineral Claims and Leases Held by WCM

CLAIM_NUM	CROWN_IOL	CLAIM_STAT	DISTRICT	ISSUE_DATE	ANNIV_DT	AREA_HA
103104	IOL	ACTIVE	1	26/09/2023	26/09/2025	1248.736
103105	IOL	ACTIVE	1	26/09/2023	26/09/2025	1248.736
103106	IOL	ACTIVE	1	26/09/2023	26/09/2025	1218.548
103107	IOL	ACTIVE	1	26/09/2023	26/09/2025	1016.261
103108	CROWN	ACTIVE	1	26/09/2023	26/09/2025	1407.249
103109	IOL	ACTIVE	1	26/09/2023	26/09/2025	1407.249
103110	IOL	ACTIVE	1	26/09/2023	26/09/2025	1405.635
103111	CROWN	ACTIVE	1	26/09/2023	26/09/2025	1116.344
103112	CROWN	ACTIVE	1	26/09/2023	26/09/2025	1395.43
103113	CROWN	ACTIVE	1	26/09/2023	26/09/2025	1386.27
103114	CROWN	ACTIVE	1	26/09/2023	26/09/2025	1383.831
103115	CROWN	ACTIVE	1	26/09/2023	26/09/2025	1383.831
103116	CROWN	ACTIVE	1	26/09/2023	26/09/2025	1382.607
103117	CROWN	ACTIVE	1	26/09/2023	26/09/2025	1382.607
103118	CROWN	ACTIVE	1	26/09/2023	26/09/2025	1381.374
103119	CROWN	ACTIVE	1	26/09/2023	26/09/2025	1381.374
103120	CROWN	ACTIVE	1	26/09/2023	26/09/2025	1381.131
103121	CROWN	ACTIVE	1	27/09/2023	27/09/2025	1428.044
103122	CROWN	ACTIVE	1	27/09/2023	27/09/2025	1371.198
103123	CROWN	ACTIVE	1	27/09/2023	27/09/2025	1173.604
103124	CROWN	ACTIVE	1	27/09/2023	27/09/2025	1299.788
103125	CROWN	ACTIVE	1	27/09/2023	27/09/2025	1085.238
103126	CROWN	ACTIVE	1	27/09/2023	27/09/2025	805.322
103127	CROWN	ACTIVE	1	27/09/2023	27/09/2025	770.15
103484	CROWN	ACTIVE	1	01/11/2023	01/11/2025	1381.132
103485	CROWN	ACTIVE	1	01/11/2023	01/11/2025	1381.14
103486	CROWN	ACTIVE	1	01/11/2023	01/11/2025	1381.14
103487	CROWN	ACTIVE	1	01/11/2023	01/11/2025	1381.14
103488	CROWN	ACTIVE	1	01/11/2023	01/11/2025	1381.135
103489	CROWN	ACTIVE	1	01/11/2023	01/11/2025	1381.131
103490	CROWN	ACTIVE	1	01/11/2023	01/11/2025	1381.131
103491	CROWN	ACTIVE	1	01/11/2023	01/11/2025	1381.131
103492	CROWN	ACTIVE	1	01/11/2023	01/11/2025	1381.122
103493	CROWN	ACTIVE	1	01/11/2023	01/11/2025	1381.122
103494	CROWN	ACTIVE	1	01/11/2023	01/11/2025	1382.976
103495	CROWN	ACTIVE	1	01/11/2023	01/11/2025	1382.976
103496	CROWN	ACTIVE	1	01/11/2023	01/11/2025	1382.976
103497	CROWN	ACTIVE	1	01/11/2023	01/11/2025	1382.976

APPENDIX A - RAE COPPER MINERAL CLAIMS AND LEASES HELD BY WCM

103498	CROWN	ACTIVE	1	01/11/2023	01/11/2025	1382.976
103499	CROWN	ACTIVE	1	01/11/2023	01/11/2025	1490.638
103500	CROWN	ACTIVE	1	01/11/2023	01/11/2025	1384.434
103501	CROWN	ACTIVE	1	01/11/2023	01/11/2025	1455.913
103502	CROWN	ACTIVE	1	01/11/2023	01/11/2025	1455.913
103503	CROWN	ACTIVE	1	01/11/2023	01/11/2025	1417.786
103504	CROWN	ACTIVE	1	01/11/2023	01/11/2025	1461.1
103505	CROWN	ACTIVE	1	01/11/2023	01/11/2025	1310.06
103506	CROWN	ACTIVE	1	01/11/2023	01/11/2025	1325.448
103507	CROWN	ACTIVE	1	02/11/2023	02/11/2025	1482.864
103508	CROWN	ACTIVE	1	02/11/2023	02/11/2025	1384.2
103509	CROWN	ACTIVE	1	02/11/2023	02/11/2025	769
103510	CROWN	ACTIVE	1	02/11/2023	02/11/2025	845.9
103511	CROWN	ACTIVE	1	02/11/2023	02/11/2025	1385.424
103512	CROWN	ACTIVE	1	02/11/2023	02/11/2025	1539.36
103513	CROWN	ACTIVE	1	02/11/2023	02/11/2025	1386.63
103514	CROWN	ACTIVE	1	02/11/2023	02/11/2025	1387.854
103515	CROWN	ACTIVE	1	02/11/2023	02/11/2025	1466.345
103516	CROWN	ACTIVE	1	02/11/2023	02/11/2025	1545.447
103517	CROWN	ACTIVE	1	02/11/2023	02/11/2025	1376.962
103518	CROWN	ACTIVE	1	02/11/2023	02/11/2025	1541.159
103519	CROWN	ACTIVE	1	02/11/2023	02/11/2025	1062.295
103520	CROWN	ACTIVE	1	02/11/2023	02/11/2025	842.901
104725	CROWN	ACTIVE	1	29/06/2024	29/06/2026	1404.828
104728	CROWN	ACTIVE	1	29/06/2024	29/06/2026	495.592
104735	IOL	ACTIVE	1	29/06/2024	29/06/2026	936.552
104737	IOL	ACTIVE	1	29/06/2024	29/06/2026	874.075
104918	CROWN	ACTIVE	1	13/09/2024	13/09/2026	1457.471
104919	CROWN	ACTIVE	1	13/09/2024	13/09/2026	1380.762
104920	CROWN	ACTIVE	1	13/09/2024	13/09/2026	1379.304
104921	CROWN	ACTIVE	1	13/09/2024	13/09/2026	1379.296
104922	CROWN	ACTIVE	1	13/09/2024	13/09/2026	1333.37
104923	CROWN	ACTIVE	1	13/09/2024	13/09/2026	1379.415
104924	CROWN	ACTIVE	1	13/09/2024	13/09/2026	1379.415
104925	CROWN	ACTIVE	1	13/09/2024	13/09/2026	1379.538
104926	CROWN	ACTIVE	1	13/09/2024	13/09/2026	275.76
104944	CROWN	ACTIVE	1	26/09/2024	26/09/2026	1219.62
104945	CROWN	ACTIVE	1	26/09/2024	26/09/2026	1219.62
104946	CROWN	ACTIVE	1	26/09/2024	26/09/2026	1219.84
104947	CROWN	ACTIVE	1	26/09/2024	26/09/2026	1219.84
104948	CROWN	ACTIVE	1	26/09/2024	26/09/2026	1265.671
104949	CROWN	ACTIVE	1	26/09/2024	26/09/2026	1342.244
104950	CROWN	ACTIVE	1	26/09/2024	26/09/2026	1419.232

APPENDIX A - RAE COPPER MINERAL CLAIMS AND LEASES HELD BY WCM

104951	CROWN	ACTIVE	1	26/09/2024	26/09/2026	1528.372
104952	CROWN	ACTIVE	1	26/09/2024	26/09/2026	1468.085
104953	CROWN	ACTIVE	1	26/09/2024	26/09/2026	1362.392
104954	CROWN	ACTIVE	1	26/09/2024	26/09/2026	1378.062
104955	CROWN	ACTIVE	1	26/09/2024	26/09/2026	1485.281
104956	CROWN	ACTIVE	1	26/09/2024	26/09/2026	1374.289
104957	CROWN	ACTIVE	1	26/09/2024	26/09/2026	900.109
104958	CROWN	ACTIVE	1	26/09/2024	26/09/2026	1206.116
104959	CROWN	ACTIVE	1	26/09/2024	26/09/2026	1252.602
104960	CROWN	ACTIVE	1	26/09/2024	26/09/2026	1483.076
104961	CROWN	ACTIVE	1	26/09/2024	26/09/2026	1453.34
104962	CROWN	ACTIVE	1	26/09/2024	26/09/2026	504.966

LEASE_NUM	CROWN_IOL	LEASE_STAT	DISTRICT	ISSUE_DT	RENT_DUE_D	TERM_EXPIR	AREA_HA
L-2797	IOL	ACTIVE	1	22/04/1976	22/04/2023	21/04/2039	2951.78

Appendix B - Authorizations

Primary authorizations required to undertake the described Rae Copper Project a Type B Water Licence from the Nunavut Water Board (NWB), a Class III Land Use Licence from the Kitikmeot Inuit Association (KIA), and a Class A Land Use Permit from Crown-Indigenous Relations and Northern Affairs Canada (CIRNAC).

Additional authorizations may be required over project life in association with specific activities, such as archaeological research and baseline data collection.

A full list of potential authorizations is provided below.

Appendix C - Potential Project Impacts and Proposed Mitigations

Appendix D - Potential Lake Water Sources and Calculated Annual Withdrawal Capacities

Watersource_ID	SA_m2	Annual_Capacity_SA_x_0.1m_m3	Centroid_Longitude	Centroid_Latitude
WB_1	58689	5869	-115.7538274	67.3181731
WB_2	182548	18255	-115.7667985	67.37055277
WB_3	45553	4555	-115.8259977	67.34623599
WB_4	23097	2310	-115.9742106	67.33310292
WB_5	21839	2184	-115.8271696	67.34234288
WB_6	14113	1411	-115.830713	67.35518326
WB_7	88737	8874	-115.9645836	67.34229633
WB_8	47276	4728	-115.8178408	67.3418871
WB_9	67005	6701	-115.8103765	67.37100168
WB_10	10190	1019	-115.8547371	67.32528313
WB_11	37617	3762	-115.9973024	67.35180772
WB_12	16033	1603	-115.8938786	67.34052136
WB_13	21220	2122	-115.9569999	67.3500812
WB_14	4332	433	-115.8187379	67.36677238
WB_15	446319	44632	-115.9836333	67.33952566
WB_16	61741	6174	-115.9907192	67.29723153
WB_17	73768	7377	-115.9572918	67.35316433
WB_18	49707	4971	-115.8672635	67.34038812
WB_19	26942	2694	-115.8233489	67.37130524
WB_20	8912	891	-115.8887361	67.34360053
WB_21	3390	339	-115.9951559	67.32259519
WB_22	3429389	342939	-117.7548775	67.89387125
WB_23	324962	32496	-116.8774753	67.69798552
WB_24	74547	7455	-116.8992097	67.70775345
WB_25	187105	18711	-116.9256489	67.70280493
WB_26	3354	335	-116.974484	67.69899565
WB_27	116420	11642	-116.8739913	67.70472582
WB_28	24186	2419	-116.857522	67.70323312
WB_29	4521	452	-116.9913342	67.69229817
WB_30	6269	627	-116.892611	67.69699974
WB_31	566634	56663	-116.8299949	67.69318543
WB_32	11047	1105	-117.1722758	67.69825108
WB_33	5333	533	-117.1722574	67.69047125
WB_34	4641	464	-117.3944117	67.70312087
WB_35	3716	372	-117.1392714	67.69987995
WB_36	3872	387	-117.1690728	67.69757102

APPENDIX D - POTENTIAL LAKE WATER SOURCES AND CALCULATED ANNUAL WITHDRAWAL CAPACITIES

WB_37	22309	2231	-117.3423442	67.69215933
WB_38	11748	1175	-117.0807872	67.69172509
WB_39	12514	1251	-117.3021608	67.69309026
WB_40	25736	2574	-117.1568448	67.70131093
WB_41	7558	756	-117.3469476	67.70634801
WB_42	12708	1271	-117.0853673	67.69585398
WB_43	10133	1013	-117.1010434	67.70257119
WB_44	3658	366	-117.0017179	67.70290145
WB_45	29338	2934	-117.1449034	67.7003777
WB_46	17140	1714	-117.3655964	67.70516573
WB_47	5321	532	-117.1231733	67.68952909
WB_48	13489	1349	-117.0810119	67.68867456
WB_49	5052	505	-117.1293992	67.6983438
WB_50	10317	1032	-117.336218	67.6923036
WB_51	4167	417	-117.120496	67.7006536
WB_52	8876	888	-117.332606	67.69341116
WB_53	17660	1766	-117.3115204	67.70345266
WB_54	172937	17294	-117.0169914	67.69535688
WB_55	106308	10631	-117.3339842	67.70211948
WB_56	18328	1833	-117.2987672	67.70219061
WB_57	33171	3317	-117.186301	67.70072994
WB_58	23857	2386	-117.0922526	67.69739099
WB_59	3550	355	-117.3279334	67.69320544
WB_60	5291	529	-117.1284145	67.69004024
WB_61	11318	1132	-117.154204	67.69877973
WB_62	3512	351	-117.1215348	67.69085598
WB_63	3083	308	-117.2342703	67.70388065
WB_64	3269	327	-117.1598011	67.69146973
WB_65	9253	925	-117.223154	67.6902898
WB_66	3486	349	-117.3136976	67.68807789
WB_67	5412	541	-117.3140817	67.69053824
WB_68	37777	3778	-117.3019814	67.69625821
WB_69	13876	1388	-117.048973	67.69473253
WB_70	3692	369	-117.2433731	67.70702161
WB_71	3774	377	-117.2204584	67.65797303
WB_72	19162	1916	-117.2150386	67.66123317
WB_73	126853	12685	-117.1270816	67.65430076
WB_74	3385	339	-117.2563457	67.66346834
WB_75	3900	390	-117.1079713	67.67873698
WB_76	194855	19486	-117.1455373	67.68615737
WB_77	59939	5994	-117.1625071	67.65890199

APPENDIX D - POTENTIAL LAKE WATER SOURCES AND CALCULATED ANNUAL WITHDRAWAL CAPACITIES

WB_78	11468	1147	-117.0897124	67.66652641
WB_79	6744	674	-117.1193513	67.64151541
WB_80	4461	446	-117.2058493	67.65781431
WB_81	71936	7194	-117.232473	67.65704883
WB_82	4077	408	-117.2441353	67.67811443
WB_83	43368	4337	-117.1502869	67.65613012
WB_84	4259	426	-117.2183332	67.65691726
WB_85	37939	3794	-117.1285277	67.64290477
WB_86	5928	593	-117.1796044	67.67654334
WB_87	7828	783	-117.2188214	67.65373824
WB_88	21713	2171	-117.2709104	67.68053499
WB_89	7007	701	-117.1193834	67.63380259
WB_90	21725	2173	-117.091493	67.65637026
WB_91	4270	427	-117.2326911	67.68624243
WB_92	22940	2294	-117.0965528	67.67774771
WB_93	3068	307	-117.1695932	67.67505608
WB_94	13087	1309	-117.0612302	67.64857171
WB_95	9884	988	-117.2276655	67.66724598
WB_96	8264	826	-117.2064107	67.67705514
WB_97	60749	6075	-117.1721808	67.6592452
WB_98	6788	679	-117.1198189	67.67231908
WB_99	3571	357	-117.0604517	67.68757968
WB_100	10247	1025	-117.2333872	67.66928257
WB_101	6605	661	-117.239167	67.65950959
WB_102	61129	6113	-117.1978169	67.67463413
WB_103	4345	434	-117.102092	67.65869456
WB_104	18406	1841	-117.1872637	67.67826843
WB_105	11595	1159	-117.1591435	67.67316767
WB_106	8040	804	-117.1923537	67.64275952
WB_107	7606	761	-117.2144353	67.6793859
WB_108	20779	2078	-117.0508367	67.64427238
WB_109	5484	548	-117.1079674	67.65986247
WB_110	45225	4522	-117.1006603	67.6661912
WB_111	5525	553	-117.1751527	67.66051918
WB_112	4068	407	-117.2005351	67.65645587
WB_113	33580	3358	-117.0690798	67.62746665
WB_114	29164	2916	-117.1887617	67.66337068
WB_115	6642	664	-117.2348729	67.67252411
WB_116	5061	506	-117.201591	67.64989336
WB_117	36294	3629	-117.2043558	67.66494136
WB_118	4532	453	-117.1793102	67.66103745

APPENDIX D - POTENTIAL LAKE WATER SOURCES AND CALCULATED ANNUAL WITHDRAWAL CAPACITIES

WB_119	4868	487	-117.2442532	67.67582636
WB_120	16256	1626	-117.1290684	67.6807053
WB_121	23900	2390	-117.2450842	67.68616331
WB_122	33058	3306	-117.1872176	67.6462971
WB_123	44405	4440	-117.1183652	67.64657584
WB_124	8119	812	-117.1975797	67.66535605
WB_125	68682	6868	-117.1167633	67.66866196
WB_126	45913	4591	-117.2212411	67.68219566
WB_127	6835	684	-117.2216331	67.65898601
WB_128	6791	679	-117.210774	67.65765286
WB_129	5486	549	-117.2462801	67.66298693
WB_130	13721	1372	-117.0800527	67.63906449
WB_131	1216376	121638	-117.118179	67.62767888
WB_132	4265	426	-117.1050215	67.63100285
WB_133	13085	1309	-117.1608067	67.64869827
WB_134	3803	380	-117.0931896	67.63096885
WB_135	5577	558	-117.1762968	67.64925079
WB_136	219465	21946	-117.1585679	67.64117612
WB_137	7142	714	-117.1962327	67.65054685
WB_138	4433	443	-117.3260729	67.68407218
WB_139	5854	585	-117.2110698	67.66980572
WB_140	22555	2255	-117.2254123	67.67163474
WB_141	18195	1819	-117.088954	67.63918695
WB_142	3890	389	-117.2409498	67.67333439
WB_143	5488	549	-117.2379016	67.66217785
WB_144	12462	1246	-117.2363537	67.67764019
WB_145	13096	1310	-117.255151	67.66661052
WB_146	4866	487	-117.1969234	67.66015734
WB_147	3290	329	-117.4242213	67.71649297
WB_148	6001	600	-117.3562529	67.71523829
WB_149	30210	3021	-117.4110516	67.71855769
WB_150	3986	399	-117.3509355	67.70996056
WB_151	6269	627	-117.4293057	67.71660574
WB_152	6511	651	-117.4335019	67.71760237
WB_153	42840	4284	-117.3941248	67.70684938
WB_154	28845	2885	-117.4040569	67.71333949
WB_155	5590	559	-117.396493	67.69550174
WB_156	4401	440	-117.4244984	67.72554998
WB_157	4443	444	-117.451754	67.72265022
WB_158	7202	720	-117.4159178	67.71747241
WB_159	7275	727	-117.3990972	67.692176

APPENDIX D - POTENTIAL LAKE WATER SOURCES AND CALCULATED ANNUAL WITHDRAWAL CAPACITIES

WB_160	16820	1682	-117.3730431	67.72100671
WB_161	21718	2172	-117.4328544	67.69897383
WB_162	3215	321	-117.3901374	67.69240786
WB_163	6024	602	-117.439924	67.7245001
WB_164	5012	501	-117.3407935	67.68105244
WB_165	6206	621	-117.3372691	67.67859433
WB_166	3155	316	-117.3697219	67.69989515
WB_167	46676	4668	-117.3552642	67.68121347
WB_168	4999	500	-116.9992484	67.66292173
WB_169	3568	357	-116.991089	67.6563653
WB_170	39226	3923	-116.969595	67.65085583
WB_171	8134	813	-116.7982707	67.67846435
WB_172	63772	6377	-116.9319947	67.65377722
WB_173	61912	6191	-116.8956857	67.65086847
WB_174	70065	7006	-116.9522622	67.65721249
WB_175	21063	2106	-116.8703741	67.64239926
WB_176	6529	653	-116.9820215	67.63264121
WB_177	3789	379	-116.9322706	67.63319356
WB_178	85124	8512	-116.9534115	67.64388887
WB_179	4048	405	-116.9891137	67.6412792
WB_180	9280	928	-116.9074219	67.65166644
WB_181	9335	934	-116.9605717	67.63792944
WB_182	166010	16601	-116.9316317	67.66402376
WB_183	9676	968	-116.7872139	67.66005535
WB_184	98537	9854	-116.8444245	67.66413916
WB_185	10687	1069	-116.9851912	67.63453843
WB_186	81022	8102	-116.8575091	67.67699076
WB_187	8962	896	-116.9778471	67.65577549
WB_188	19899	1990	-116.9702705	67.66461284
WB_189	17490	1749	-116.9742675	67.64878992
WB_190	20253	2025	-116.904907	67.63242047
WB_191	3377	338	-116.9384325	67.65413721
WB_192	20368	2037	-116.9094152	67.63144757
WB_193	52243	5224	-116.8239167	67.66037434
WB_194	7211	721	-116.8137397	67.64365367
WB_195	27761	2776	-116.9525527	67.6411862
WB_196	5982	598	-116.9628179	67.64808499
WB_197	423381	42338	-116.9088454	67.62145221
WB_198	136088	13609	-116.8098244	67.67323645
WB_199	36418	3642	-116.848666	67.64527447
WB_200	11129	1113	-116.8429657	67.65066668

APPENDIX D - POTENTIAL LAKE WATER SOURCES AND CALCULATED ANNUAL WITHDRAWAL CAPACITIES

WB_201	13211	1321	-116.8735655	67.68221575
WB_202	11092	1109	-116.9513763	67.64894501
WB_203	52239	5224	-116.9265725	67.63808006
WB_204	49297	4930	-116.9740822	67.66174741
WB_205	9296	930	-116.9273352	67.62779729
WB_206	4215	421	-116.9890252	67.65798842
WB_207	3811	381	-116.8840545	67.63865408
WB_208	3936	394	-116.9454072	67.63472042
WB_209	4809	481	-116.7963059	67.65054175
WB_210	5243	524	-117.0005983	67.66327218
WB_211	25835	2583	-117.0183383	67.63663766
WB_212	3430	343	-117.0181503	67.63976058
WB_213	3613	361	-117.0094127	67.66264247
WB_214	47330	4733	-117.0128557	67.67549106
WB_215	18728	1873	-117.031238	67.67701084
WB_216	3141	314	-117.0178842	67.67486294
WB_217	7200	720	-117.042286	67.68100562
WB_218	25905	2590	-117.0087656	67.65638485
WB_219	3128	313	-117.0144145	67.66707018
WB_220	197420	19742	-117.0235668	67.66339426
WB_221	346313	34631	-117.027368	67.63641265
WB_222	1788842	178884	-117.1830207	67.80217307
WB_223	39997	4000	-117.2495488	67.74630682
WB_224	4567	457	-117.1924953	67.72792509
WB_225	24005	2401	-117.1986195	67.74259242
WB_226	7149	715	-117.2800012	67.71811938
WB_227	4126	413	-117.3331772	67.73826205
WB_228	6847	685	-117.0772248	67.74357092
WB_229	25651	2565	-117.3059002	67.73887902
WB_230	5220	522	-117.1956054	67.72862551
WB_231	93335	9334	-117.1757148	67.7334184
WB_232	33033	3303	-117.2058849	67.73449702
WB_233	14867	1487	-117.3537326	67.72542051
WB_234	165732	16573	-117.1883799	67.73086677
WB_235	8107	811	-117.0548504	67.71985127
WB_236	21553	2155	-117.2985552	67.73583488
WB_237	122322	12232	-117.2262414	67.74301725
WB_238	6919	692	-117.0873634	67.74635253
WB_239	77373	7737	-117.295496	67.72646655
WB_240	3566	357	-117.1497835	67.71881195
WB_241	22270	2227	-117.1219396	67.74481316

APPENDIX D - POTENTIAL LAKE WATER SOURCES AND CALCULATED ANNUAL WITHDRAWAL CAPACITIES

WB_242	6089	609	-117.256817	67.74157507
WB_243	16181	1618	-117.1417272	67.71314033
WB_244	5273	527	-117.2015938	67.74165995
WB_245	97626	9763	-117.2252205	67.73248319
WB_246	39269	3927	-117.2162843	67.73566488
WB_247	14786	1479	-117.0251179	67.71647413
WB_248	13018	1302	-117.106351	67.74060964
WB_249	3565	357	-117.2136286	67.7333115
WB_250	12065	1207	-117.1530236	67.72116305
WB_251	6875	687	-117.1805353	67.72008201
WB_252	64480	6448	-117.2781652	67.74406702
WB_253	19120	1912	-117.1519491	67.71605095
WB_254	164644	16464	-117.161063	67.74346502
WB_255	3799	380	-117.185858	67.73712617
WB_256	6500	650	-117.2115916	67.73737375
WB_257	31954	3195	-117.0585337	67.73431086
WB_258	3250	325	-117.1447467	67.71366604
WB_259	9038	904	-117.1594566	67.71812681
WB_260	16858	1686	-117.2402797	67.7452273
WB_261	4200	420	-117.2849848	67.72165184
WB_262	5821	582	-117.2084708	67.74459395
WB_263	12579	1258	-117.0934834	67.71022001
WB_264	5472	547	-117.0447764	67.73807485
WB_265	5776	578	-117.2277676	67.72874236
WB_266	4826	483	-117.3137441	67.73518021
WB_267	4534	453	-117.1781711	67.72569621
WB_268	9067	907	-117.3279243	67.7151912
WB_269	8132	813	-117.2218514	67.72738026
WB_270	11105	1110	-117.1595207	67.71651541
WB_271	6432	643	-117.3244919	67.73922197
WB_272	7456	746	-117.3535741	67.73393173
WB_273	19887	1989	-117.2154436	67.71094191
WB_274	3246	325	-117.3352505	67.72949571
WB_275	23335	2334	-117.3201093	67.73665006
WB_276	9040	904	-117.0411749	67.7370567
WB_277	13549	1355	-117.3171941	67.71384036
WB_278	3626	363	-117.1887775	67.64451389
WB_279	2454290	245429	-116.6821742	67.79700969
WB_280	470551	47055	-116.6646911	67.71523846
WB_281	6404	640	-116.7505535	67.6742581
WB_282	193256	19326	-116.7122757	67.71669012

APPENDIX D - POTENTIAL LAKE WATER SOURCES AND CALCULATED ANNUAL WITHDRAWAL CAPACITIES

WB_283	32987	3299	-116.8020147	67.72914553
WB_284	87548	8755	-116.698767	67.7416836
WB_285	22003	2200	-116.7230024	67.72565476
WB_286	5208	521	-116.8229165	67.72381972
WB_287	8356	836	-116.6897037	67.74533426
WB_288	58244	5824	-116.7491675	67.70984196
WB_289	118289	11829	-116.76336	67.70783206
WB_290	22146	2215	-116.7049605	67.72412055
WB_291	4721	472	-116.7685911	67.68961171
WB_292	55176	5518	-116.6968012	67.70140298
WB_293	101942	10194	-116.8036985	67.68247243
WB_294	3455	346	-116.8048584	67.68691077
WB_295	236085	23609	-116.773208	67.70365632
WB_296	38709	3871	-116.7559283	67.72131229
WB_297	271637	27164	-116.7115867	67.70493265
WB_298	34343	3434	-116.6943323	67.68035295
WB_299	26859	2686	-116.8124439	67.74257664
WB_300	15088	1509	-116.791886	67.72423412
WB_301	3254	325	-116.6978485	67.72419717
WB_302	5800	580	-116.7149105	67.7347831
WB_303	3183	318	-116.7041319	67.72977193
WB_304	503089	50309	-116.7384081	67.72287301
WB_305	11514	1151	-117.5909982	67.78629634
WB_306	3720	372	-117.6190163	67.78648719
WB_307	26069	2607	-117.6532143	67.78477474
WB_308	28553	2855	-117.6812092	67.78477121
WB_309	96846	9685	-117.6901865	67.78631037
WB_310	5877	588	-117.7114291	67.78991031
WB_311	9804	980	-117.7551068	67.78988428
WB_312	491824	49182	-117.7309926	67.78732186
WB_313	90587	9059	-117.5505992	67.78353651
WB_314	123765	12376	-117.4926882	67.78589228
WB_315	62963	6296	-116.9313966	67.74005904
WB_316	24982	2498	-116.9815857	67.7440976
WB_317	142590	14259	-116.9324784	67.7124186
WB_318	3864	386	-116.6986364	67.72010006
WB_319	14993	1499	-116.8744868	67.72314419
WB_320	4233	423	-116.8123747	67.71979095
WB_321	80985	8099	-116.9763377	67.72936372
WB_322	23127	2313	-116.9112011	67.71492447
WB_323	24099	2410	-116.696	67.74440032

APPENDIX D - POTENTIAL LAKE WATER SOURCES AND CALCULATED ANNUAL WITHDRAWAL CAPACITIES

WB_324	241676	24168	-116.786308	67.71449627
WB_325	189534	18953	-116.985429	67.73720107
WB_326	9114	911	-116.7010776	67.72757061
WB_327	3691	369	-116.9240695	67.74340563
WB_328	6364	636	-116.6967792	67.72102934
WB_329	5987	599	-116.8630098	67.71157014
WB_330	3419	342	-116.88641	67.71266472
WB_331	4238	424	-116.7125443	67.73212135
WB_332	10750	1075	-116.8602829	67.73429258
WB_333	3699	370	-116.7028428	67.726509
WB_334	7577	758	-116.7100372	67.74204171
WB_335	50566	5057	-117.0661553	67.73533838
WB_336	20704	2070	-117.0185294	67.71397146
WB_337	4375	437	-116.9823108	67.76240894
WB_338	19764	1976	-116.7671655	67.66528772
WB_339	6566	657	-116.7053432	67.65470771
WB_340	50956	5096	-116.6996414	67.65401967
WB_341	15444	1544	-116.7593506	67.64832485
WB_342	400235	40023	-116.7442744	67.64358372
WB_343	175309	17531	-116.7373335	67.66982881
WB_344	3388	339	-116.7540533	67.66669113
WB_345	5092	509	-116.7711381	67.65608232
WB_346	321158	32116	-116.7643192	67.6803081
WB_347	169306	16931	-117.539643	67.79213946
WB_348	5433	543	-117.6080167	67.74761127
WB_349	4332	433	-117.5497391	67.71942974
WB_350	3786	379	-117.587647	67.71922353
WB_351	7749	775	-117.5137809	67.71537714
WB_352	5894	589	-117.6303359	67.71248279
WB_353	9899	990	-117.6117684	67.74418501
WB_354	12103	1210	-117.5180201	67.71779589
WB_355	6431	643	-117.608587	67.72435621
WB_356	22103	2210	-117.6201187	67.74553001
WB_357	34814	3481	-117.5811991	67.71364008
WB_358	9731	973	-117.5853968	67.74045408
WB_359	18630	1863	-117.5990684	67.71988499
WB_360	19019	1902	-117.5926523	67.72422347
WB_361	3246	325	-117.6086286	67.71740722
WB_362	8566	857	-117.4691509	67.72360729
WB_363	30663	3066	-117.4626916	67.72606257
WB_364	6033	603	-117.4409495	67.73131188

APPENDIX D - POTENTIAL LAKE WATER SOURCES AND CALCULATED ANNUAL WITHDRAWAL CAPACITIES

WB_365	3381	338	-117.4939417	67.74959095
WB_366	20972	2097	-117.4786554	67.74716292
WB_367	4856	486	-117.471493	67.73651668
WB_368	4703	470	-117.4434283	67.74741984
WB_369	5653	565	-117.5675601	67.77490604
WB_370	4975	498	-117.5817018	67.77655694
WB_371	9694	969	-117.5836627	67.76541376
WB_372	177074	17707	-117.6097377	67.77459492
WB_373	15335	1534	-117.7032658	67.76718706
WB_374	3908	391	-117.5629396	67.76940055
WB_375	3353	335	-117.8084555	67.77195663
WB_376	6396	640	-117.7769274	67.75954604
WB_377	5701	570	-117.5086704	67.77680503
WB_378	9838	984	-117.6024382	67.77023274
WB_379	5477	548	-117.544352	67.76388245
WB_380	98224	9822	-117.5439341	67.77024899
WB_381	4860	486	-117.5113983	67.76918526
WB_382	5683	568	-117.5348537	67.76010856
WB_383	13376	1338	-117.5583574	67.76316328
WB_384	11870	1187	-117.5083844	67.76805189
WB_385	4084	408	-117.564628	67.77422629
WB_386	10493	1049	-117.5577531	67.76692772
WB_387	9229	923	-117.8660549	67.76003055
WB_388	3267	327	-117.8738417	67.7732309
WB_389	6123	612	-117.517949	67.77123156
WB_390	19538	1954	-117.7049646	67.77110067
WB_391	3946	395	-117.8724183	67.77426753
WB_392	7298	730	-117.5135339	67.75749213
WB_393	15055	1505	-117.7856694	67.7587372
WB_394	105049	10505	-117.5550775	67.76974832
WB_395	10179	1018	-117.5483777	67.76537103
WB_396	9772	977	-117.8581756	67.76414
WB_397	23576	2358	-117.6323512	67.77367091
WB_398	3882	388	-117.5681095	67.75551808
WB_399	7244	724	-117.5231291	67.75916444
WB_400	14283	1428	-117.5785876	67.76780672
WB_401	6070	607	-117.5020623	67.75403852
WB_402	41561	4156	-117.5658427	67.76339159
WB_403	3095	309	-117.6791182	67.75533834
WB_404	5587	559	-117.609064	67.7595001
WB_405	8634	863	-117.5753071	67.76474976

APPENDIX D - POTENTIAL LAKE WATER SOURCES AND CALCULATED ANNUAL WITHDRAWAL CAPACITIES

WB_406	5593	559	-117.5899457	67.76915791
WB_407	61401	6140	-117.6794742	67.77572003
WB_408	7411	741	-117.6946742	67.76877385
WB_409	10971	1097	-117.5864073	67.76804921
WB_410	4299	430	-117.5575238	67.77666607
WB_411	4633	463	-117.5300495	67.76101347
WB_412	77374	7737	-117.5727229	67.77211807
WB_413	26491	2649	-117.8499603	67.76186954
WB_414	5241	524	-117.818167	67.76612605
WB_415	5276	528	-117.7409266	67.77275103
WB_416	3666	367	-117.6057527	67.75677767
WB_417	14922	1492	-117.6924124	67.76471016
WB_418	16419	1642	-117.8568315	67.76061386
WB_419	3159	316	-117.5127914	67.77121613
WB_420	3251	325	-117.5263668	67.75770514
WB_421	17693	1769	-117.5370301	67.76346297
WB_422	3953	395	-117.7074202	67.76808873
WB_423	5038	504	-117.5083981	67.75631822
WB_424	4473	447	-117.6831241	67.75964562
WB_425	22372	2237	-117.5578949	67.75495935
WB_426	5604	560	-117.5739419	67.75307532
WB_427	3312	331	-117.7448791	67.75392601
WB_428	8481	848	-117.824379	67.75218269
WB_429	3596	360	-117.5772887	67.75289793
WB_430	8242	824	-117.5824614	67.76319782
WB_431	5657	566	-117.7803745	67.76908998
WB_432	3900	390	-117.5311466	67.76012758
WB_433	3068	307	-117.8317378	67.76027678
WB_434	3829	383	-117.4081397	67.76363916
WB_435	4788	479	-117.1378225	67.76727611
WB_436	5528	553	-117.1306254	67.75754052
WB_437	17938	1794	-117.4584394	67.77409907
WB_438	5623	562	-117.0851171	67.75953781
WB_439	30222	3022	-117.1073249	67.75161186
WB_440	3367	337	-117.3927845	67.75972385
WB_441	5490	549	-117.1799492	67.77011808
WB_442	23307	2331	-117.1134113	67.75296207
WB_443	3717	372	-117.4469839	67.75195603
WB_444	5932	593	-117.4711067	67.77392801
WB_445	7674	767	-117.4154953	67.76250879
WB_446	10856	1086	-117.134144	67.75838621

APPENDIX D - POTENTIAL LAKE WATER SOURCES AND CALCULATED ANNUAL WITHDRAWAL CAPACITIES

WB_447	13121	1312	-117.4036808	67.76461467
WB_448	5607	561	-117.3953783	67.75939366
WB_449	79015	7901	-117.1207474	67.75443699
WB_450	25831	2583	-117.1843955	67.77223662
WB_451	6306	631	-117.3034694	67.76509379
WB_452	28704	2870	-117.2843428	67.77567028
WB_453	13967	1397	-117.2836927	67.7675721
WB_454	122613	12261	-117.4254409	67.77372285
WB_455	30803	3080	-117.3932335	67.77067227
WB_456	4355	435	-117.4379804	67.76900919
WB_457	50290	5029	-117.382605	67.76302192
WB_458	99553	9955	-117.4469975	67.77612445
WB_459	24540	2454	-117.4024378	67.76099847
WB_460	3601	360	-117.4751991	67.75699315
WB_461	3117	312	-117.4734226	67.75675175
WB_462	8182	818	-117.3783838	67.75193127
WB_463	3773	377	-117.2000478	67.75766347
WB_464	10434	1043	-117.0482583	67.76573494
WB_465	11088	1109	-117.0795574	67.76088498
WB_466	86936	8694	-117.3351363	67.75743245
WB_467	22951	2295	-117.3959577	67.76087039
WB_468	3629	363	-117.1148689	67.76460704
WB_469	135228	13523	-117.4380202	67.76642784
WB_470	13908	1391	-117.2167989	67.75799784
WB_471	7157	716	-117.3761909	67.75477241
WB_472	10343	1034	-117.4663382	67.75384739
WB_473	3002	300	-117.1414407	67.76399398
WB_474	60221	6022	-117.0583363	67.76920999
WB_475	8917	892	-117.4594805	67.76914612
WB_476	57683	5768	-117.4526434	67.77099712
WB_477	9484	948	-117.434931	67.75742607
WB_478	46298	4630	-117.421375	67.7637007
WB_479	99482	9948	-117.1679829	67.75618698
WB_480	34424	3442	-117.4819893	67.76131308
WB_481	12957	1296	-117.4485802	67.7639079
WB_482	5278	528	-117.4717536	67.77608798
WB_483	160658	16066	-117.1536081	67.76511853
WB_484	30204	3020	-117.1683416	67.76556892
WB_485	3312	331	-117.3275789	67.77505295
WB_486	17246	1725	-117.496875	67.76458902
WB_487	28677	2868	-117.3153942	67.76122331

APPENDIX D - POTENTIAL LAKE WATER SOURCES AND CALCULATED ANNUAL WITHDRAWAL CAPACITIES

WB_488	54173	5417	-117.3164285	67.7726495
WB_489	8077	808	-117.159867	67.75502166
WB_490	67359	6736	-117.1615076	67.77189408
WB_491	3753	375	-117.4123217	67.76789443
WB_492	12316	1232	-117.4142383	67.76084407
WB_493	15855	1586	-117.4198334	67.75740754
WB_494	6891	689	-117.4718163	67.77096832
WB_495	16091	1609	-117.1484307	67.76881076
WB_496	12415	1242	-117.4816482	67.75835787
WB_497	26050	2605	-117.3620152	67.76198957
WB_498	15119	1512	-117.4638336	67.76974217
WB_499	59184	5918	-117.2384952	67.76433596
WB_500	6807	681	-117.406688	67.75435791
WB_501	34228	3423	-117.1628404	67.76382167
WB_502	3025	303	-117.3759949	67.76749968
WB_503	10082	1008	-117.2046689	67.75535519
WB_504	5238	524	-117.443784	67.75745611
WB_505	25827	2583	-117.3228107	67.76321171
WB_506	7800	780	-117.4653287	67.77376849
WB_507	3628	363	-116.8176584	67.63994294
WB_508	37151	3715	-116.7545206	67.66522289
WB_509	17354	1735	-116.792288	67.65305885
WB_510	26772	2677	-116.7981737	67.65745417
WB_511	14016	1402	-116.7586059	67.65927888
WB_512	4605	461	-116.7739724	67.65415146
WB_513	7358	736	-116.7995233	67.6555072
WB_514	25274	2527	-116.6988073	67.65609674
WB_515	75548	7555	-116.7601267	67.65134883
WB_516	17201	1720	-116.7880202	67.64721753
WB_517	3944	394	-116.7769226	67.66144757
WB_518	4095	410	-116.7541516	67.65327292
WB_519	29031	2903	-116.9543237	67.65330994
WB_520	12197	1220	-116.9578963	67.67585451
WB_521	42238	4224	-116.9508091	67.74422041
WB_522	39355	3935	-116.9414271	67.72545034
WB_523	4849	485	-116.9610935	67.71553025
WB_524	59293	5929	-116.9603173	67.74725701
WB_525	23966	2397	-116.9586017	67.6529413
WB_526	3726	373	-116.9563685	67.6655544
WB_527	3100	310	-116.9431214	67.65699735
WB_528	5822	582	-117.8136161	67.71340684

APPENDIX D - POTENTIAL LAKE WATER SOURCES AND CALCULATED ANNUAL WITHDRAWAL CAPACITIES

WB_529	1031905	103190	-117.8409988	67.72046834
WB_530	3860	386	-117.843247	67.73123153
WB_531	11109	1111	-117.7844184	67.73077221
WB_532	9506	951	-117.8671234	67.73522925
WB_533	3972	397	-117.755051	67.72054196
WB_534	6968	697	-117.7761267	67.73804897
WB_535	31739	3174	-117.8112762	67.7263459
WB_536	17573	1757	-117.7899745	67.74418349
WB_537	5740	574	-117.8261524	67.72436361
WB_538	4174	417	-117.7546944	67.72168754
WB_539	123930	12393	-117.8410316	67.72663755
WB_540	49948	4995	-117.7721756	67.72421174
WB_541	3582	358	-117.8098663	67.72275818
WB_542	80084	8008	-117.7639614	67.71195179
WB_543	13797	1380	-117.8598619	67.71333804
WB_544	47384	4738	-117.8212731	67.7131531
WB_545	6364	636	-117.7938272	67.71695286
WB_546	7632	763	-117.8274312	67.74237705
WB_547	3756	376	-117.7796934	67.7295808
WB_548	131688	13169	-117.7654265	67.73019335
WB_549	4549	455	-117.7985924	67.72953232
WB_550	14936	1494	-117.8092625	67.73310725
WB_551	11556	1156	-117.7036596	67.71765462
WB_552	3929	393	-117.8238243	67.73530069
WB_553	9598	960	-117.7233901	67.73029642
WB_554	6200	620	-117.7129682	67.74499375
WB_555	10641	1064	-117.8226713	67.74462839
WB_556	4005	400	-117.8452117	67.733631
WB_557	84575	8457	-117.7118828	67.72104354
WB_558	64474	6447	-117.8267104	67.72956914
WB_559	11803	1180	-117.8259951	67.74045868
WB_560	12188	1219	-117.8612006	67.739257
WB_561	8177	818	-117.7128378	67.74749087
WB_562	8621	862	-117.8133424	67.74429567
WB_563	4090	409	-117.7750996	67.73555149
WB_564	10653	1065	-117.8135519	67.73128916
WB_565	6394	639	-117.7130206	67.74192735
WB_566	3012	301	-117.8365478	67.73063278
WB_567	4687	469	-117.7141847	67.74864065
WB_568	13900	1390	-117.7485604	67.72953795
WB_569	3625	363	-117.7564109	67.73750898

APPENDIX D - POTENTIAL LAKE WATER SOURCES AND CALCULATED ANNUAL WITHDRAWAL CAPACITIES

WB_570	8421	842	-117.7774564	67.74070162
WB_571	7992	799	-117.859701	67.7296705
WB_572	3915	392	-117.7584291	67.72328798
WB_573	119307	11931	-117.5092835	67.78827401
WB_574	44638	4464	-117.4696422	67.78236818
WB_575	5292	529	-117.5548443	67.79240988
WB_576	346154	34615	-117.6356014	67.7824125
WB_577	5021	502	-117.6420165	67.79205139
WB_578	45683	4568	-117.7191573	67.79073217
WB_579	4304	430	-117.7730107	67.79252396
WB_580	22824	2282	-117.7772953	67.79669746
WB_581	7612	761	-117.7563463	67.78439694
WB_582	20954	2095	-117.6866649	67.77813296
WB_583	5165	517	-117.547135	67.77829718
WB_584	93859	9386	-117.6137089	67.77952352
WB_585	115249	11525	-117.5376752	67.77770888
WB_586	132261	13226	-117.6281072	67.77806328
WB_587	49701	4970	-117.7398234	67.78062921
WB_588	19444	1944	-117.6479614	67.78214083
WB_589	4310	431	-117.704808	67.78250831
WB_590	6514	651	-117.6653599	67.78295008
WB_591	3674	367	-117.5818148	67.78326287
WB_592	17839	1784	-117.751295	67.7833988
WB_593	19879	1988	-117.5677627	67.78363602
WB_594	11077	1108	-117.5868249	67.78374957
WB_595	33141	3314	-117.5819495	67.777982
WB_596	3338	334	-117.6545926	67.77664684
WB_597	7850	785	-117.470214	67.77785501
WB_598	40705	4071	-117.4767254	67.78176557
WB_599	57657	5766	-117.5571365	67.7967775
WB_600	29739	2974	-117.722807	67.7966138
WB_601	44218	4422	-117.0209854	67.62200616
WB_602	94266	9427	-117.0785464	67.62149693
WB_603	418548	41855	-117.0329846	67.60254117
WB_604	6859	686	-117.0694792	67.61689856
WB_605	9978	998	-117.0675973	67.62088667
WB_606	5018	502	-117.0185872	67.59638992
WB_607	44105	4410	-117.02178	67.61441558
WB_608	33002	3300	-117.0656699	67.61469205
WB_609	56384	5638	-117.0478653	67.62192381
WB_610	4208	421	-117.0436982	67.62007338

APPENDIX D - POTENTIAL LAKE WATER SOURCES AND CALCULATED ANNUAL WITHDRAWAL CAPACITIES

WB_611	3984	398	-117.0124486	67.62244305
WB_612	6141	614	-117.0093264	67.6205547
WB_613	19879	1988	-117.0218911	67.62529834
WB_614	4010	401	-117.0936089	67.61803158
WB_615	8063	806	-116.9137909	67.58416992
WB_616	3297	330	-116.9040866	67.58248945
WB_617	6509	651	-116.8947083	67.58424097
WB_618	12321	1232	-116.9098261	67.58586504
WB_619	7612	761	-116.9012474	67.58491834
WB_620	5921	592	-116.9069377	67.5854687
WB_621	15029	1503	-116.9134054	67.58825565
WB_622	3191	319	-116.8837891	67.58050274
WB_623	3150	315	-116.9193018	67.57873223
WB_624	3609	361	-116.9634657	67.59361172
WB_625	65389	6539	-116.982363	67.62188109
WB_626	5012	501	-116.9654445	67.60864316
WB_627	3817	382	-116.9246204	67.62563618
WB_628	4512	451	-116.8760579	67.59736636
WB_629	12068	1207	-116.9218123	67.56376759
WB_630	57527	5753	-116.8865889	67.58954205
WB_631	7247	725	-116.9739369	67.61396504
WB_632	10432	1043	-116.9449367	67.61685008
WB_633	11439	1144	-116.9246514	67.59576048
WB_634	151868	15187	-116.9467469	67.58503617
WB_635	12978	1298	-116.9708777	67.59716552
WB_636	4389	439	-116.9845506	67.60344573
WB_637	14376	1438	-116.964325	67.60064783
WB_638	49687	4969	-116.9307161	67.62182353
WB_639	10789	1079	-116.8916216	67.62412768
WB_640	51435	5144	-116.8897399	67.55872927
WB_641	54605	5461	-116.9551595	67.60505086
WB_642	12744	1274	-116.9576081	67.61275563
WB_643	3237	324	-116.9549818	67.57468994
WB_644	40408	4041	-116.8719423	67.58933798
WB_645	8694	869	-116.8731047	67.60520103
WB_646	3378	338	-116.9710663	67.61092186
WB_647	3254	325	-116.9429433	67.60591699
WB_648	22242	2224	-116.9017594	67.62239206
WB_649	6364	636	-116.9628514	67.611436
WB_650	3238	324	-116.8632533	67.58194196
WB_651	5780	578	-116.8837627	67.61676832

APPENDIX D - POTENTIAL LAKE WATER SOURCES AND CALCULATED ANNUAL WITHDRAWAL CAPACITIES

WB_652	42973	4297	-116.9781959	67.60133805
WB_653	14501	1450	-116.8292774	67.58041752
WB_654	3692	369	-116.6335326	67.54559478
WB_655	4639	464	-116.8069462	67.61680313
WB_656	6098	610	-116.7838078	67.57450785
WB_657	159099	15910	-116.6525215	67.546647
WB_658	50258	5026	-116.7964185	67.55321196
WB_659	72806	7281	-116.7928172	67.54354622
WB_660	190928	19093	-116.8392238	67.60127293
WB_661	52127	5213	-116.7090678	67.54260052
WB_662	55099	5510	-116.8029272	67.58242142
WB_663	7749	775	-116.6656629	67.54579383
WB_664	342071	34207	-116.8274367	67.56568661
WB_665	3592	359	-116.7201468	67.54172335
WB_666	9382	938	-116.8026773	67.54004854
WB_667	34946	3495	-116.8389432	67.60936196
WB_668	6737	674	-116.7473125	67.53987877
WB_669	102936	10294	-116.7871613	67.57915947
WB_670	3591	359	-116.7447492	67.5410676
WB_671	8540	854	-116.8293834	67.60258273
WB_672	18230	1823	-116.8508674	67.60591795
WB_673	19404	1940	-116.8349303	67.58961334
WB_674	24288	2429	-116.8477364	67.59688655
WB_675	12794	1279	-116.6776298	67.54325798
WB_676	8615	862	-116.6990071	67.54361745
WB_677	825651	82565	-116.806586	67.53944479
WB_678	9374	937	-116.7432372	67.53030869
WB_679	26669	2667	-116.7892663	67.53403182
WB_680	4517	452	-116.7611186	67.53511616
WB_681	8481	848	-116.7479666	67.54284547
WB_682	37624	3762	-116.8045279	67.56593016
WB_683	6471	647	-116.8020547	67.55753425
WB_684	53429	5343	-116.7714414	67.54536159
WB_685	3382	338	-116.6814503	67.5444627
WB_686	9685	969	-116.6706189	67.54616813
WB_687	135790	13579	-116.8009483	67.57069819
WB_688	17333	1733	-116.6151775	67.52526505
WB_689	193469	19347	-116.8407871	67.6141217
WB_690	10851	1085	-116.7582356	67.45181153
WB_691	112322	11232	-116.7304481	67.45018
WB_692	49929	4993	-116.7410502	67.45098551

APPENDIX D - POTENTIAL LAKE WATER SOURCES AND CALCULATED ANNUAL WITHDRAWAL CAPACITIES

WB_693	11843	1184	-116.7796644	67.47865727
WB_694	425469	42547	-116.7389964	67.45784953
WB_695	10823	1082	-116.7684473	67.46236694
WB_696	13343	1334	-116.7282699	67.4894298
WB_697	11506	1151	-116.7848963	67.4980241
WB_698	8354	835	-116.7555348	67.48673706
WB_699	3114	311	-116.7429965	67.47092625
WB_700	12301	1230	-116.7343559	67.46840923
WB_701	5617	562	-116.7583888	67.46554375
WB_702	10070	1007	-116.7416047	67.47402964
WB_703	28337	2834	-116.7309535	67.48409751
WB_704	8659	866	-116.7551066	67.46827717
WB_705	5811	581	-116.7261858	67.47066572
WB_706	24681	2468	-116.723539	67.48661557
WB_707	28088	2809	-116.75483	67.44413569
WB_708	6112	611	-116.7450839	67.48943835
WB_709	7836	784	-116.7243019	67.47521937
WB_710	5798	580	-116.761819	67.46470114
WB_711	13321	1332	-116.7465764	67.4694748
WB_712	7761	776	-116.7748164	67.48352446
WB_713	32213	3221	-116.7197251	67.4702795
WB_714	23952	2395	-116.7631388	67.45284481
WB_715	5599	560	-116.7219592	67.44557982
WB_716	16556	1656	-116.7285325	67.47368084
WB_717	5630	563	-116.7259738	67.47850769
WB_718	69038	6904	-116.7287864	67.44464826
WB_719	6183	618	-116.7799581	67.48115265
WB_720	43975	4398	-116.7796731	67.4546545
WB_721	19803	1980	-116.771283	67.44124924
WB_722	3555	356	-116.7467202	67.44371112
WB_723	4024	402	-116.7575931	67.43579343
WB_724	6601	660	-116.7757066	67.46397575
WB_725	7549	755	-116.7675354	67.45393107
WB_726	3162	316	-116.6997154	67.49455285
WB_727	9271	927	-116.7735158	67.45343942
WB_728	5088	509	-116.779809	67.44563523
WB_729	4149	415	-116.7665645	67.50946737
WB_730	8070	807	-116.7163863	67.53698914
WB_731	27650	2765	-116.7508933	67.53821517
WB_732	3806	381	-116.7163879	67.52530385
WB_733	6648	665	-116.77595	67.50579921

APPENDIX D - POTENTIAL LAKE WATER SOURCES AND CALCULATED ANNUAL WITHDRAWAL CAPACITIES

WB_734	11202	1120	-116.7726001	67.53436824
WB_735	43667	4367	-116.7505364	67.51015682
WB_736	8709	871	-116.7322055	67.51670158
WB_737	7570	757	-116.769763	67.51035987
WB_738	15689	1569	-116.7492002	67.53457035
WB_739	48511	4851	-116.7580994	67.53752855
WB_740	16938	1694	-116.7670514	67.51446132
WB_741	3890	389	-116.72745	67.50103739
WB_742	8009	801	-116.78439	67.50786328
WB_743	9982	998	-116.7498507	67.52568351
WB_744	17010	1701	-116.7644563	67.52002134
WB_745	420213	42021	-116.6684893	67.48695453
WB_746	217666	21767	-116.6211873	67.48882325
WB_747	4019	402	-116.6168085	67.49384517
WB_748	9445	944	-116.6321819	67.49919713
WB_749	24102	2410	-116.626229	67.49380726
WB_750	9356	936	-116.6725276	67.4953061
WB_751	3417	342	-116.677142	67.49328674
WB_752	4611	461	-116.6166615	67.51729334
WB_753	3355	336	-116.6112392	67.53125884
WB_754	5440	544	-116.6717625	67.51031023
WB_755	6688	669	-116.6142016	67.51127674
WB_756	7668	767	-116.646912	67.51447239
WB_757	21189	2119	-116.6504641	67.51136539
WB_758	9646	965	-116.6116741	67.52297983
WB_759	30028	3003	-116.6689335	67.52531668
WB_760	9045	904	-116.6600878	67.50370655
WB_761	23183	2318	-116.6501132	67.5021707
WB_762	84920	8492	-116.6200579	67.52772825
WB_763	18605	1860	-116.6323562	67.5360931
WB_764	5366	537	-116.6433724	67.51288405
WB_765	11494	1149	-116.6526674	67.52255143
WB_766	10249	1025	-116.628814	67.52839031
WB_767	25573	2557	-116.6383195	67.52135298
WB_768	70914	7091	-116.6226209	67.51419342
WB_769	21965	2196	-116.6572849	67.53108077
WB_770	34354	3435	-116.6557702	67.50134021
WB_771	4591	459	-116.6610096	67.5117476
WB_772	5464	546	-116.6820239	67.53008949
WB_773	16990	1699	-116.6335089	67.52966532
WB_774	6254	625	-116.6569858	67.51564676

APPENDIX D - POTENTIAL LAKE WATER SOURCES AND CALCULATED ANNUAL WITHDRAWAL CAPACITIES

WB_775	27297	2730	-116.6570495	67.51257369
WB_776	9015	901	-116.6205806	67.51889027
WB_777	38530	3853	-116.7922383	67.49228575
WB_778	15930	1593	-116.7991261	67.51895742
WB_779	3821	382	-116.7921132	67.50050382
WB_780	29008	2901	-116.7963537	67.51259644
WB_781	13550	1355	-116.1582769	67.36538545
WB_782	38636	3864	-116.1545159	67.34408841
WB_783	11680	1168	-116.013362	67.30288501
WB_784	15487	1549	-116.0119962	67.35535576
WB_785	9669	967	-116.0087578	67.30218949
WB_786	7238	724	-116.1055825	67.3216951
WB_787	6574	657	-116.1228908	67.33950964
WB_788	7458	746	-116.0613021	67.31828956
WB_789	5917	592	-116.1446699	67.3278796
WB_790	69505	6950	-116.0852745	67.32453901
WB_791	16576	1658	-116.1346132	67.29477927
WB_792	25788	2579	-116.1196069	67.33354879
WB_793	45843	4584	-116.0868085	67.32273368
WB_794	118033	11803	-116.0226602	67.3111353
WB_795	5438	544	-116.1330048	67.36042611
WB_796	11197	1120	-116.1115703	67.32558391
WB_797	15761	1576	-116.0831061	67.3711426
WB_798	6435	644	-116.0539649	67.34254099
WB_799	10160	1016	-116.1493374	67.35897918
WB_800	11147	1115	-116.0612249	67.34183405
WB_801	9233	923	-116.1508661	67.30025485
WB_802	48598	4860	-116.0473786	67.30779199
WB_803	17989	1799	-116.1440621	67.35570868
WB_804	994110	99411	-116.7424892	67.42424369
WB_805	224343	22434	-116.7171825	67.42371371
WB_806	36958	3696	-116.7319219	67.43699964
WB_807	29133	2913	-116.7539721	67.43670217
WB_808	7790	779	-116.7672421	67.43264014
WB_809	7281	728	-116.749149	67.43651457
WB_810	7522	752	-116.7542598	67.43943098
WB_811	52597	5260	-116.7444148	67.43875038
WB_812	19999	2000	-116.7278935	67.4096051
WB_813	11118	1112	-116.7711456	67.43695714
WB_814	24588	2459	-116.7856842	67.43580357
WB_815	40184	4018	-116.7717058	67.4210398

APPENDIX D - POTENTIAL LAKE WATER SOURCES AND CALCULATED ANNUAL WITHDRAWAL CAPACITIES

WB_816	59721	5972	-116.7677954	67.41422463
WB_817	30293	3029	-116.7542778	67.41199406
WB_818	30755	3075	-116.7509805	67.41031117
WB_819	25919	2592	-116.7803366	67.41910421
WB_820	6283	628	-116.7749767	67.41655397
WB_821	6192	619	-116.7785507	67.42040569
WB_822	10763	1076	-116.743115	67.41524018
WB_823	21422	2142	-116.7803452	67.42965192
WB_824	340724	34072	-116.7371787	67.40848174
WB_825	111252	11125	-116.7869921	67.41580309
WB_826	29658	2966	-116.7720777	67.43276027
WB_827	7794	779	-116.777099	67.43197792
WB_828	3689	369	-116.7743788	67.42456529
WB_829	113274	11327	-116.1532839	67.29680461
WB_830	19077	1908	-116.1342339	67.3417441
WB_831	12602	1260	-116.1513288	67.31019981
WB_832	6088	609	-116.1557734	67.35785225
WB_833	22541	2254	-116.1596727	67.3440728
WB_834	7113	711	-116.1273281	67.33474259
WB_835	35014	3501	-116.1323856	67.33569549
WB_836	10156	1016	-116.1555583	67.36037771
WB_837	19840	1984	-116.1133213	67.32393369
WB_838	137099	13710	-116.151158	67.32999741
WB_839	12946	1295	-116.1506933	67.35537252
WB_840	9360	936	-116.151239	67.35063114
WB_841	3261	326	-116.1550764	67.35077115
WB_842	6478	648	-116.1192859	67.31838242
WB_843	4105	410	-116.1503273	67.32371222
WB_844	20002	2000	-116.1310114	67.32728212
WB_845	4238	424	-116.1584533	67.34759849
WB_846	328575	32857	-116.0811711	67.31768159
WB_847	3282	328	-116.0746962	67.36989761
WB_848	11129	1113	-116.041296	67.37170128
WB_849	27202	2720	-116.0790142	67.35434239
WB_850	3440	344	-116.0712666	67.30876216
WB_851	4281	428	-116.072469	67.31131383
WB_852	7136	714	-116.0703437	67.31251387
WB_853	4797	480	-116.0748327	67.34139641
WB_854	23161	2316	-116.0243394	67.33589822
WB_855	3538	354	-116.0605815	67.31388015
WB_856	6165	617	-116.0049823	67.35437439

APPENDIX D - POTENTIAL LAKE WATER SOURCES AND CALCULATED ANNUAL WITHDRAWAL CAPACITIES

WB_857	14912	1491	-116.0565752	67.34055535
WB_858	6184	618	-116.149019	67.31642983
WB_859	26958	2696	-116.1090422	67.32759563
WB_860	34824	3482	-116.1282701	67.34027431
WB_861	10795	1079	-116.0593837	67.36374222
WB_862	13038	1304	-116.1261511	67.31590323
WB_863	30376	3038	-116.0310203	67.29563877
WB_864	14456	1446	-116.1258831	67.33613883
WB_865	12499	1250	-116.1512245	67.36225355
WB_866	36038	3604	-116.1346062	67.32447443
WB_867	45481	4548	-116.1383764	67.35824248
WB_868	7824	782	-116.1182963	67.29202345
WB_869	12920	1292	-116.1111289	67.33122782
WB_870	5483	548	-116.1025589	67.32971718
WB_871	10045	1004	-116.1390127	67.32864541
WB_872	26963	2696	-116.0610536	67.35033702
WB_873	18749	1875	-116.1588915	67.33439151
WB_874	195524	19552	-116.1111166	67.36423928
WB_875	8571	857	-116.1306903	67.32089028
WB_876	31642	3164	-116.1065443	67.31932717
WB_877	18559	1856	-116.1490467	67.34024053
WB_878	9716	972	-116.0844412	67.31079053
WB_879	208278	20828	-116.1678301	67.31525282
WB_880	10524	1052	-116.0183396	67.31498907
WB_881	17304	1730	-116.1544578	67.36822557
WB_882	44033	4403	-116.0961522	67.31511514
WB_883	24458	2446	-116.1242075	67.31331979
WB_884	4027	403	-116.1002152	67.31271066
WB_885	25365	2536	-116.0947286	67.30909855
WB_886	3807	381	-116.1076628	67.32428146
WB_887	8626	863	-116.1150183	67.28913569
WB_888	48348	4835	-116.052089	67.30023096
WB_889	8840	884	-116.1556041	67.33955117
WB_890	3624	362	-116.0491385	67.32681752
WB_891	5341	534	-116.0165689	67.30071245
WB_892	3775	377	-116.1559177	67.32478893
WB_893	5051	505	-116.1546275	67.33580141
WB_894	16032	1603	-116.1233003	67.32685938
WB_895	3231	323	-116.1443271	67.33612508
WB_896	4975	498	-116.1497869	67.31986422
WB_897	4498	450	-116.121793	67.31924804

APPENDIX D - POTENTIAL LAKE WATER SOURCES AND CALCULATED ANNUAL WITHDRAWAL CAPACITIES

WB_898	892121	89212	-116.0159662	67.36953203
WB_899	147500	14750	-116.0007235	67.28744532
WB_900	537610	53761	-117.496201	67.78044033
WB_901	107993	10799	-117.4977747	67.79367899
WB_902	3569	357	-117.5001135	67.7687305
WB_903	242417	24242	-117.1448794	67.75107368
WB_904	2546319	254632	-117.0392567	67.74994951
WB_905	119101	11910	-116.9942998	67.7002939
WB_906	22797	2280	-117.0008637	67.69616168
WB_907	7096	710	-117.0004797	67.65397661
WB_908	4571	457	-116.999605	67.6281862
WB_909	3078	308	-116.999388	67.61210993
WB_910	31172	3117	-117.0004749	67.60233644
WB_911	48170	4817	-117.000513	67.59352376
WB_912	4351	435	-116.7255148	67.76156335
WB_913	3403	340	-116.9701356	67.75154854
WB_914	133085	13309	-116.800714	67.76370856
WB_915	32827	3283	-116.7111296	67.75601207
WB_916	7903	790	-116.8402044	67.75913258
WB_917	292354	29235	-116.961094	67.75716878
WB_918	30074	3007	-116.8540935	67.76252213
WB_919	173657	17366	-116.8992122	67.77960541
WB_920	37526	3753	-116.7212157	67.76198193
WB_921	181534	18153	-116.9272133	67.78627173
WB_922	4069	407	-116.8635431	67.7923719
WB_923	10917	1092	-116.9858421	67.78330904
WB_924	2454290	245429	-116.6821742	67.79700969
WB_925	10496	1050	-116.8423751	67.77398487
WB_926	3536	354	-116.9799284	67.78222359
WB_927	24456	2446	-116.7212099	67.76448333
WB_928	34983	3498	-116.7164921	67.75997294
WB_929	3721	372	-116.9510017	67.76313822
WB_930	320390	32039	-116.8226161	67.77100204
WB_931	17264	1726	-116.8674055	67.7815733
WB_932	20898	2090	-116.8562397	67.77762037
WB_933	11642	1164	-118.309397	67.87567235
WB_934	58508	5851	-118.0914413	67.9159814
WB_935	3160	316	-118.3141469	67.93364403
WB_936	251790	25179	-118.2321333	67.91962504
WB_937	139264	13926	-118.1400429	67.93984621
WB_938	44784	4478	-118.1744055	67.89087108

APPENDIX D - POTENTIAL LAKE WATER SOURCES AND CALCULATED ANNUAL WITHDRAWAL CAPACITIES

WB_939	9564	956	-118.2059599	67.89192589
WB_940	45538	4554	-118.2968034	67.87902149
WB_941	6653	665	-118.1653901	67.89300493
WB_942	3356	336	-118.2977527	67.93217256
WB_943	3644	364	-118.1243291	67.91488837
WB_944	5395	539	-118.2428399	67.91428895
WB_945	7153	715	-118.1063748	67.89313764
WB_946	224043	22404	-118.1917969	67.89664295
WB_947	21523	2152	-118.0713655	67.85505932
WB_948	158638	15864	-118.3071259	67.88905598
WB_949	31999	3200	-118.2973553	67.93752224
WB_950	25222	2522	-118.0825431	67.85593204
WB_951	4962	496	-118.2198122	67.91642928
WB_952	5033	503	-118.1140395	67.91941536
WB_953	41487	4149	-118.230225	67.91523626
WB_954	14326	1433	-118.0936157	67.85459225
WB_955	4850	485	-118.1734292	67.86438277
WB_956	125990	12599	-118.3062023	67.92742065
WB_957	9585	959	-118.3070414	67.86812073
WB_958	5524	552	-118.2363167	67.8919576
WB_959	21388	2139	-118.1226355	67.92519788
WB_960	444955	44495	-118.1272969	67.93024501
WB_961	8060	806	-118.2028382	67.8664204
WB_962	11015	1102	-118.1257373	67.86278065
WB_963	3655	365	-118.1897527	67.94484282
WB_964	878713	87871	-118.1597811	67.90283036
WB_965	4811	481	-118.1785968	67.86453057
WB_966	281544	28154	-118.1544697	67.86583022
WB_967	1371708	137171	-118.0920861	67.89035626
WB_968	15145	1514	-118.0145977	67.87765434
WB_969	12913	1291	-118.1740282	67.9413993
WB_970	10367	1037	-118.3014375	67.93232358
WB_971	7774	777	-118.2943762	67.93173198
WB_972	4329	433	-118.2968295	67.89076704
WB_973	36980	3698	-118.2519119	67.92375482
WB_974	3108	311	-118.0439165	67.87984469
WB_975	243927	24393	-118.1136567	67.85104915
WB_976	82381	8238	-118.0688099	67.8517961
WB_977	140939	14094	-118.2282163	67.86112561
WB_978	790331	79033	-118.2644325	67.95058139
WB_979	11858	1186	-118.1683243	67.89296873

APPENDIX D - POTENTIAL LAKE WATER SOURCES AND CALCULATED ANNUAL WITHDRAWAL CAPACITIES

WB_980	23367	2337	-118.0471968	67.87867974
WB_981	4344	434	-118.2679145	67.92690863
WB_982	59600	5960	-118.2272044	67.93295123
WB_983	17692	1769	-118.1840221	67.89873009
WB_984	8070	807	-118.2955634	67.8971877
WB_985	59767	5977	-118.1606428	67.89276204
WB_986	8029	803	-118.0979944	67.91607767
WB_987	51462	5146	-118.1136805	67.85962784
WB_988	36933	3693	-118.0792274	67.84830409
WB_989	4966	497	-118.1378609	67.86152532
WB_990	603727	60373	-118.2391019	67.90175489
WB_991	7463	746	-118.2238221	67.92817835
WB_992	1686384	168638	-118.188664	67.97169891
WB_993	4435	444	-118.3056965	67.93295403
WB_994	22379	2238	-118.1633296	67.86952907
WB_995	19611	1961	-118.1016558	67.91626824
WB_996	149932	14993	-118.0970697	67.85011399
WB_997	313460	31346	-118.0149381	67.89781799
WB_998	11670	1167	-118.2302491	67.86459461
WB_999	9315	932	-118.085712	67.88066711
WB_1000	7882	788	-118.1227427	67.90954119
WB_1001	152322	15232	-118.1871265	67.86793797
WB_1002	4243	424	-118.1514971	67.89490832
WB_1003	48816	4882	-118.0874654	67.89850301
WB_1004	24033	2403	-118.2153304	67.86874147
WB_1005	6427	643	-118.2217621	67.86970446
WB_1006	33238	3324	-118.0854648	67.8608539
WB_1007	64442	6444	-118.1096741	67.86704874
WB_1008	12240	1224	-118.1611971	67.8597015
WB_1009	206539	20654	-118.2912405	67.87512623
WB_1010	50455	5045	-118.0310734	67.88222745
WB_1011	74368	7437	-118.1292975	67.93884979
WB_1012	129765	12977	-118.1294212	67.85720801
WB_1013	44743	4474	-118.2783656	67.88518874
WB_1014	30801	3080	-118.286306	67.87905479
WB_1015	5646	565	-117.5943863	67.8362414
WB_1016	4170	417	-117.6867547	67.84599191
WB_1017	5583	558	-117.751084	67.84952862
WB_1018	6406	641	-117.9532137	67.85863052
WB_1019	10730	1073	-117.8863056	67.8631451
WB_1020	3810	381	-117.6374009	67.83477536

APPENDIX D - POTENTIAL LAKE WATER SOURCES AND CALCULATED ANNUAL WITHDRAWAL CAPACITIES

WB_1021	54813	5481	-117.8192893	67.82792954
WB_1022	4608	461	-117.723261	67.81154427
WB_1023	9465	947	-117.6126775	67.81885291
WB_1024	13580	1358	-117.9217371	67.8437418
WB_1025	365712	36571	-117.7244358	67.85672992
WB_1026	3421	342	-117.7531879	67.82279591
WB_1027	511762	51176	-117.5922603	67.82046095
WB_1028	57657	5766	-117.5571365	67.7967775
WB_1029	18125	1813	-117.7352935	67.84179188
WB_1030	16700	1670	-117.9386001	67.86639337
WB_1031	107210	10721	-117.902088	67.84006986
WB_1032	4220	422	-117.5853752	67.81049849
WB_1033	191624	19162	-117.9154166	67.85237093
WB_1034	45480	4548	-117.7335878	67.84829373
WB_1035	25305	2530	-117.6082447	67.81736664
WB_1036	5731	573	-117.9138395	67.84711383
WB_1037	116830	11683	-117.7415825	67.82629891
WB_1038	11137	1114	-117.8596059	67.86676117
WB_1039	7261	726	-117.8097946	67.83093096
WB_1040	160637	16064	-117.6781157	67.84484154
WB_1041	158993	15899	-117.5410695	67.82069766
WB_1042	3610	361	-117.6390779	67.8254859
WB_1043	5025	502	-117.5650578	67.83008934
WB_1044	19067	1907	-117.6405721	67.83320952
WB_1045	203120	20312	-117.6506634	67.80795487
WB_1046	52778	5278	-117.8365911	67.83111337
WB_1047	34327	3433	-117.5239021	67.81500752
WB_1048	26726	2673	-117.7509291	67.81604758
WB_1049	4585	458	-117.916195	67.84855109
WB_1050	3799	380	-117.9120479	67.84892921
WB_1051	16360	1636	-117.7447918	67.84822886
WB_1052	3360	336	-117.6183347	67.83994699
WB_1053	3386	339	-117.6189177	67.82049385
WB_1054	3686	369	-117.5824851	67.81024299
WB_1055	291080	29108	-117.9626013	67.8635805
WB_1056	3918	392	-117.6493912	67.81020169
WB_1057	29852	2985	-117.8315926	67.82814325
WB_1058	30337	3034	-117.9273758	67.85054869
WB_1059	25683	2568	-117.7248969	67.81729875
WB_1060	47663	4766	-117.9505091	67.86571159
WB_1061	5544	554	-117.808847	67.82469169

APPENDIX D - POTENTIAL LAKE WATER SOURCES AND CALCULATED ANNUAL WITHDRAWAL CAPACITIES

WB_1062	430589	43059	-117.5736018	67.80491098
WB_1063	331167	33117	-117.87382	67.88266855
WB_1064	10511	1051	-117.9703697	67.86704105
WB_1065	9456	946	-117.5534035	67.81198803
WB_1066	624881	62488	-117.7050941	67.8261214
WB_1067	10240	1024	-117.6440666	67.81494591
WB_1068	1168202	116820	-117.7663332	67.83312655
WB_1069	1295799	129580	-117.795867	67.85184384
WB_1070	6217	622	-117.5375787	67.80293715
WB_1071	5429	543	-117.9344623	67.85478666
WB_1072	16315	1632	-117.6433556	67.82923769
WB_1073	747842	74784	-117.9587358	67.87954701
WB_1074	8904	890	-117.7090641	67.80540126
WB_1075	14458	1446	-117.9335937	67.85311292
WB_1076	5264	526	-117.7950321	67.86680854
WB_1077	5147	515	-117.7450961	67.81863805
WB_1078	170588	17059	-117.578878	67.84036106
WB_1079	8002	800	-117.6321045	67.82394915
WB_1080	243950	24395	-117.022638	67.77889104
WB_1081	4710	471	-117.4135362	67.80746664
WB_1082	17446	1745	-117.4518448	67.79653654
WB_1083	324201	32420	-117.3768534	67.81605397
WB_1084	165966	16597	-117.4289619	67.82042087
WB_1085	7565	756	-117.1243327	67.79267917
WB_1086	1788842	178884	-117.1830207	67.80217307
WB_1087	4939	494	-117.4091092	67.78700246
WB_1088	475599	47560	-117.4705342	67.82615445
WB_1089	7352	735	-117.3939124	67.77951976
WB_1090	1231875	123187	-117.4324103	67.79942078
WB_1091	11849	1185	-117.4671423	67.79170668
WB_1092	62668	6267	-117.4961847	67.80643036
WB_1093	54067	5407	-117.4471669	67.82154671
WB_1094	5013	501	-117.0518323	67.79512191
WB_1095	99553	9955	-117.4469975	67.77612445
WB_1096	30385	3039	-117.4427453	67.78117831
WB_1097	9696	970	-117.4980397	67.80162347
WB_1098	160316	16032	-117.4795466	67.81477058
WB_1099	44638	4464	-117.4696422	67.78236818
WB_1100	35459	3546	-117.0586883	67.79700877
WB_1101	3787	379	-117.477389	67.79891457
WB_1102	25832	2583	-117.3963382	67.77757734

APPENDIX D - POTENTIAL LAKE WATER SOURCES AND CALCULATED ANNUAL WITHDRAWAL CAPACITIES

WB_1103	64682	6468	-117.3353741	67.80413387
WB_1104	49239	4924	-117.4068366	67.81839125
WB_1105	5191	519	-117.3707756	67.78803317
WB_1106	321509	32151	-117.3472384	67.77990542
WB_1107	60376	6038	-117.016969	67.78574494
WB_1108	8249	825	-117.4071016	67.81017032
WB_1109	7850	785	-117.470214	67.77785501
WB_1110	6740	674	-117.0462379	67.77784535
WB_1111	3374	337	-117.3733902	67.80408393
WB_1112	3358	336	-117.2884384	67.79303403
WB_1113	16367	1637	-117.2742307	67.77989663
WB_1114	28704	2870	-117.2843428	67.77567028
WB_1115	452977	45298	-117.4332065	67.81339881
WB_1116	16887	1689	-117.4787959	67.81705553
WB_1117	24114	2411	-117.4622957	67.78043124
WB_1118	32140	3214	-117.4537386	67.78038248
WB_1119	10357	1036	-117.3385149	67.79787532
WB_1120	166094	16609	-117.4184625	67.78538293
WB_1121	4127	413	-117.1727105	67.78284754
WB_1122	100676	10068	-117.3887862	67.8069598
WB_1123	5062	506	-117.4157335	67.81852639
WB_1124	6024	602	-117.0304495	67.78118295
WB_1125	139080	13908	-117.3969833	67.8030969
WB_1126	8631	863	-117.0018779	67.78784622
WB_1127	66913	6691	-117.4041703	67.78307699
WB_1128	171338	17134	-117.4300598	67.78161375
WB_1129	99359	9936	-117.3747605	67.78500462
WB_1130	108728	10873	-117.3431899	67.79987975
WB_1131	15999	1600	-117.4076562	67.82252986
WB_1132	8833	883	-117.4235253	67.79260249
WB_1133	13151	1315	-117.4570858	67.79672241
WB_1134	124800	12480	-117.2769306	67.79479754
WB_1135	8284	828	-117.186923	67.77710853
WB_1136	5402	540	-117.3595485	67.78947208
WB_1137	4643	464	-117.3349758	67.8000378
WB_1138	156404	15640	-117.422845	67.78933748
WB_1139	4855	486	-117.2066876	67.78402338
WB_1140	22751	2275	-117.2152776	67.78986905
WB_1141	5778	578	-117.1979223	67.78068089
WB_1142	3223	322	-117.4389517	67.78118464
WB_1143	27143	2714	-117.4006705	67.77787983

APPENDIX D - POTENTIAL LAKE WATER SOURCES AND CALCULATED ANNUAL WITHDRAWAL CAPACITIES

WB_1144	827697	82770	-117.9960088	67.86029204
WB_1145	107993	10799	-117.4977747	67.79367899
WB_1146	264063	26406	-117.5037845	67.82397088
WB_1147	95782	9578	-118.2827315	67.92972139
WB_1148	45100.7	4510	-116.3641167	67.4225769
WB_1149	45609.8	4561	-116.4022369	67.44353485
WB_1150	32101.7	3210	-116.4089012	67.44180298
WB_1151	30520	3052	-116.4250794	67.43776703
WB_1152	26567.4	2657	-116.4537048	67.43997955
WB_1153	16162.2	1616	-116.4039307	67.449646
WB_1154	15217.3	1522	-116.3851738	67.45011902
WB_1155	15307	1531	-116.4147492	67.44330597
WB_1156	11703.2	1170	-116.4471436	67.43202209
WB_1157	510838	51084	-116.4614105	67.44290161
WB_1158	324906	32491	-116.386982	67.44509125
WB_1159	11074.7	1107	-116.3600883	67.42499542
WB_1160	10484.2	1048	-116.4058227	67.43404007
WB_1161	9408.44	941	-116.421299	67.44615173
WB_1162	7827.62	783	-116.3953514	67.43209076
WB_1163	5772.05	577	-116.4505119	67.43745422
WB_1164	5560.88	556	-116.4009361	67.4415741
WB_1165	5009.42	501	-116.4291458	67.44451141
WB_1166	4618.63	462	-116.4418564	67.4335556
WB_1167	4556.59	456	-116.4100952	67.44847107
WB_1168	4238.84	424	-116.469902	67.43896484
WB_1169	3822.45	382	-116.3723373	67.42237091
WB_1170	3631.83	363	-116.4122696	67.43515015
WB_1171	3057	306	-116.4704849	67.39946463
WB_1172	3107	311	-116.369833	67.42016435
WB_1173	3239	324	-116.4818061	67.36670578
WB_1174	3251	325	-116.4898092	67.36301171
WB_1175	3409	341	-116.3907894	67.42471779
WB_1176	3434	343	-116.4040047	67.39413403
WB_1177	3451	345	-116.5130756	67.38745515
WB_1178	3492	349	-116.4071892	67.40805575
WB_1179	3638	364	-116.4617486	67.39627485
WB_1180	3650	365	-116.4361525	67.40092863
WB_1181	3774	377	-116.4798864	67.3889273
WB_1182	3999	400	-116.4909251	67.36489618
WB_1183	4076	408	-116.4094136	67.42196388
WB_1184	4151	415	-116.4776751	67.39292192

APPENDIX D - POTENTIAL LAKE WATER SOURCES AND CALCULATED ANNUAL WITHDRAWAL CAPACITIES

WB_1185	4639	464	-116.3691793	67.41344571
WB_1186	4687	469	-116.4589517	67.41116015
WB_1187	4794	479	-116.4649576	67.37360913
WB_1188	4862	486	-116.5124589	67.38447259
WB_1189	4914	491	-116.5333479	67.37247868
WB_1190	4918	492	-116.4255794	67.40582461
WB_1191	5274	527	-116.4516258	67.37504207
WB_1192	5708	571	-116.5279608	67.38248616
WB_1193	5721	572	-116.3716005	67.40090446
WB_1194	5948	595	-116.5004114	67.38503817
WB_1195	6096	610	-116.4332422	67.40215688
WB_1196	6370	637	-116.4772639	67.39038962
WB_1197	6946	695	-116.4681544	67.37101279
WB_1198	7193	719	-116.4712514	67.37640354
WB_1199	7289	729	-116.4908238	67.38472283
WB_1200	7299	730	-116.5384376	67.36240695
WB_1201	7616	762	-116.386102	67.41928537
WB_1202	7971	797	-116.4641611	67.4057312
WB_1203	8206	821	-116.4433162	67.40574641
WB_1204	8650	865	-116.5585779	67.36431807
WB_1205	8808	881	-116.4681451	67.38810179
WB_1206	9106	911	-116.4889006	67.38195246
WB_1207	9241	924	-116.4423137	67.39879338
WB_1208	9733	973	-116.3671237	67.41468311
WB_1209	10334	1033	-116.4512724	67.3784674
WB_1210	10389	1039	-116.5536046	67.36825235
WB_1211	10479	1048	-116.3919553	67.41845727
WB_1212	11659	1166	-116.4256381	67.40752328
WB_1213	11697	1170	-116.470537	67.4076925
WB_1214	11940	1194	-116.4710973	67.36974728
WB_1215	12683	1268	-116.525658	67.37705347
WB_1216	13754	1375	-116.453572	67.37639008
WB_1217	14660	1466	-116.4571547	67.39586901
WB_1218	14794	1479	-116.4807097	67.39382884
WB_1219	14797	1480	-116.5428307	67.3677726
WB_1220	15757	1576	-116.459159	67.39122771
WB_1221	15981	1598	-116.4815434	67.38663988
WB_1222	17205	1721	-116.4078383	67.40682177
WB_1223	17450	1745	-116.4763086	67.40557367
WB_1224	17818	1782	-116.4943191	67.39247147
WB_1225	19387	1939	-116.5236504	67.38648948

APPENDIX D - POTENTIAL LAKE WATER SOURCES AND CALCULATED ANNUAL WITHDRAWAL CAPACITIES

WB_1226	19709	1971	-116.5201199	67.38158002
WB_1227	19865	1987	-116.4918455	67.36070594
WB_1228	20292	2029	-116.4397772	67.40740543
WB_1229	21878	2188	-116.4336971	67.40533164
WB_1230	22658	2266	-116.5065884	67.38536087
WB_1231	27272	2727	-116.5016992	67.37291527
WB_1232	29215	2921	-116.4727082	67.36313555
WB_1233	29528	2953	-116.4209027	67.38865582
WB_1234	31742	3174	-116.4548433	67.37314377
WB_1235	37294	3729	-116.451451	67.38382624
WB_1236	43449	4345	-116.4860205	67.38342354
WB_1237	52148	5215	-116.5523884	67.37195707
WB_1238	60526	6053	-116.4683668	67.39270757
WB_1239	64594	6459	-116.4726608	67.38572842
WB_1240	67546	6755	-116.4510185	67.39367021
WB_1241	122533	12253	-116.4888567	67.40483257
WB_1242	137831	13783	-116.564526	67.36213976
WB_1243	164790	16479	-116.4892371	67.37825042
WB_1244	283274	28327	-116.4549301	67.41698641