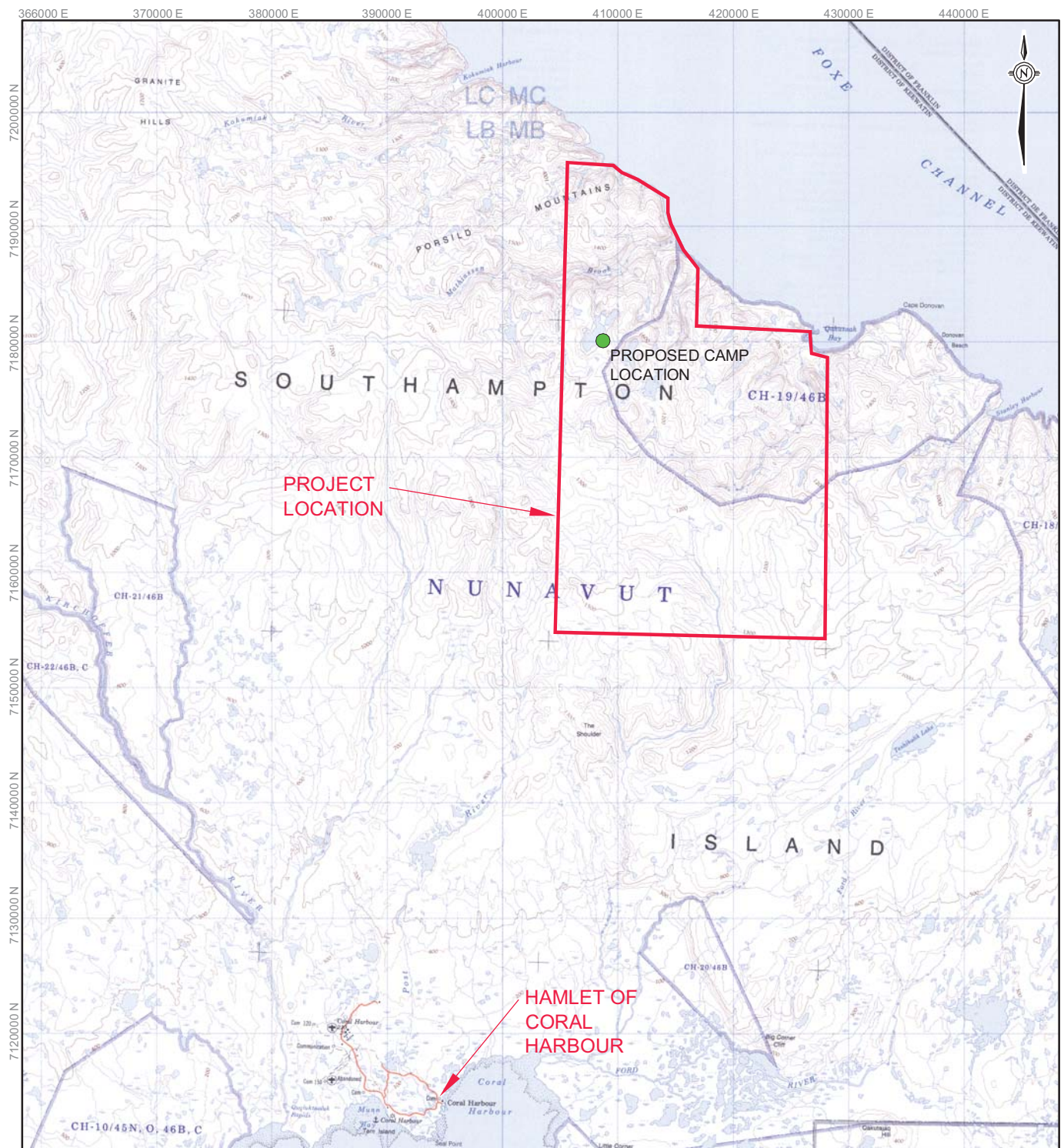



Appendix B – Site Maps

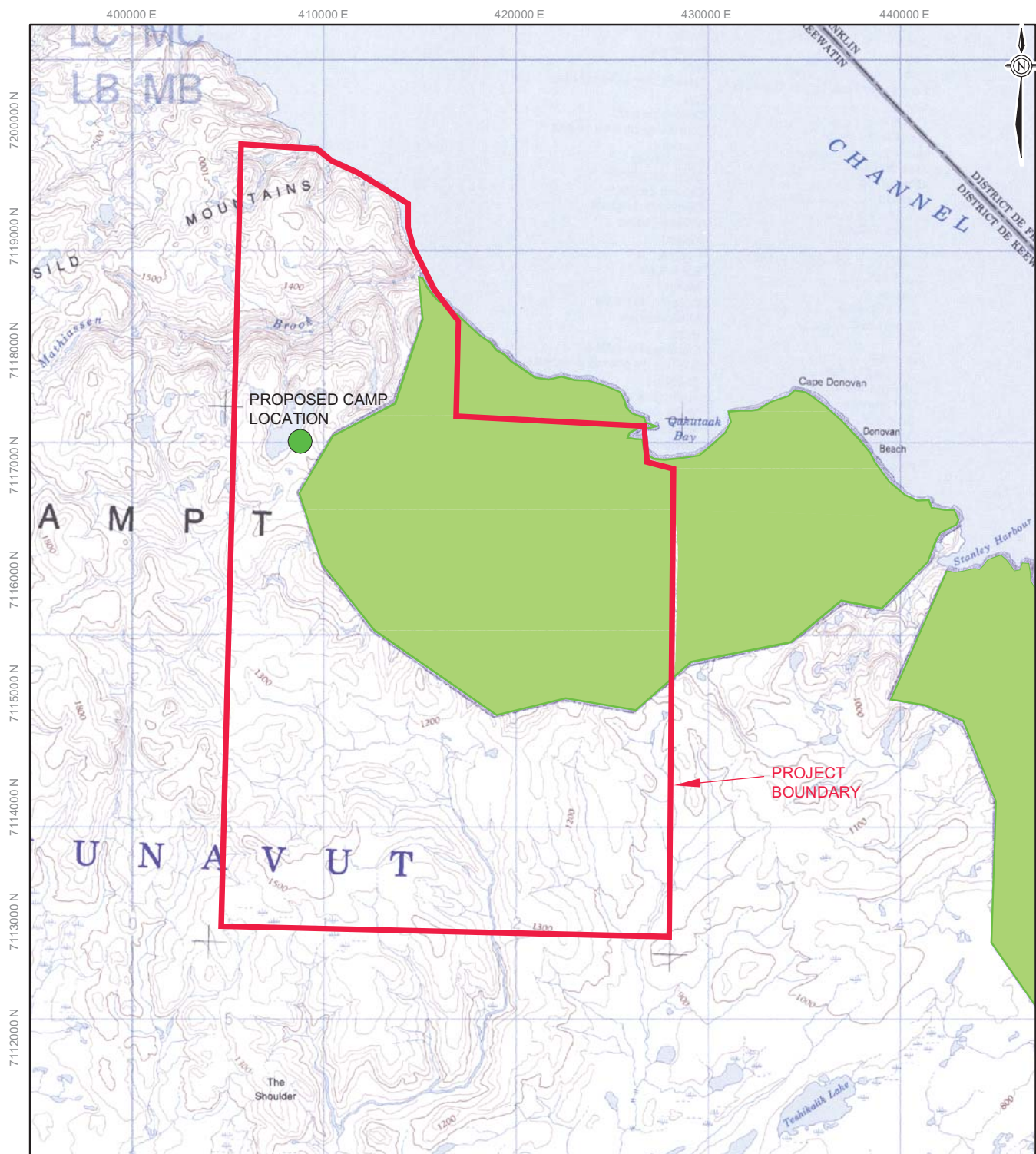


REFERENCE

TOPOGRAPHIC MAPS 46B AND 46G OBTAINED FROM CANMATRIX. © 1986 AND 1995 (RESPECTIVELY) HER MAJESTY THE QUEEN IN RIGHT OF CANADA. DEPARTMENT OF NATURAL RESOURCES. ALL RIGHTS RESERVED. DATUM: NAD83 PROJECTION: UTM ZONE 17.

PROJECT		CORAL HARBOUR AREA SOUTHAMPTON ISLAND, NUNAVUT			
TITLE		PROJECT LOCATION MAP			
	PROJECT	11.1372.0019.1000	FILE No.	11137200191000B001	
	DESIGN	SG	20 Dec. 2011	SCALE	AS SHOWN
	CADD	BSW	23 Dec. 2011	REV.	0
	CHECK	CD	16 Feb. 2012	FIGURE: 1	
REVIEW		JR	16 Feb. 2012		

L:\2011\1372\11-1372-0019\1000\Report B\Fig2_11137200191000B002SitePlan.dwg Feb 16, 2012 - 9:39am




LEGEND

- PROJECT BOUNDARY
- CROWN LAND
- INUIT OWNED LAND



REFERENCE

TOPOGRAPHIC MAPS 46B AND 46G OBTAINED FROM CANMATRIX. © 1986 AND 1995 (RESPECTIVELY) HER MAJESTY THE QUEEN IN RIGHT OF CANADA. DEPARTMENT OF NATURAL RESOURCES. ALL RIGHTS RESERVED. DATUM: NAD83 PROJECTION: UTM ZONE 17.

PROJECT		CORAL HARBOUR AREA SOUTHAMPTON ISLAND, NUNAVUT			
TITLE		SITE MAP			
	PROJECT	11.1372.0019.1000	FILE No.	11137200191000B002	
	DESIGN	SG 20 Dec. 2011	SCALE	AS SHOWN	REV. 0
	CADD	BSW 23 Dec. 2011	FIGURE: 2		
	CHECK	CD 16 Feb. 2012			
	REVIEW	JR 16 Feb. 2012			