

PROJECT SUMMARY

Viridis Mining & Minerals is an exploration company based in Australia, with projects in both Canada and Australia. Its Canadian project is called the South Kitikmeot Gold Project, which is located in the Kitikmeot Region of Nunavut, near the Lupin Mine, Contwoyto Lake and the Back River Project.

The Project includes seven properties spread over about 11,000 hectares. These properties were studied in the late 1980's, 1990's and again in 2021. Some drilling was done and there was a camp on Esker Lake. Most of the properties are on Crown land; one property is on Inuit Owned Land.

Viridis is working with a local exploration contractor, Aurora Geosciences Ltd., to plan and conduct exploration on all of the properties. Starting in early spring 2023, Viridis would like to set up a main temporary tent camp and then do some drilling, mapping, and sampling, and also do some studies of the rocks from the air using a drone or a helicopter.

The camp will be small at first, with up to 25 people. If the work is successful, the camp may expand over several years to house up to 50-60 people to do more work. Because some of the work sites are far apart, some crews may stay in a small tent for a few nights before travelling back to the main camp.

Workers will usually travel to and from the camp on a small airplane, and to and from works areas in a helicopter. In the winter crews may travel around on the snow. If the winter road is built to the Lupin Mine, supplies may be brought in from the winter road to the main camp by cat train.

The camp and activities on the land will happen at different times throughout the year, depending on weather and caribou use of the area. At the end of the program, all of the tents and equipment will be removed from the land.

By using a program manager based in the north, Viridis looks forward to hiring local workers and contractors wherever possible.

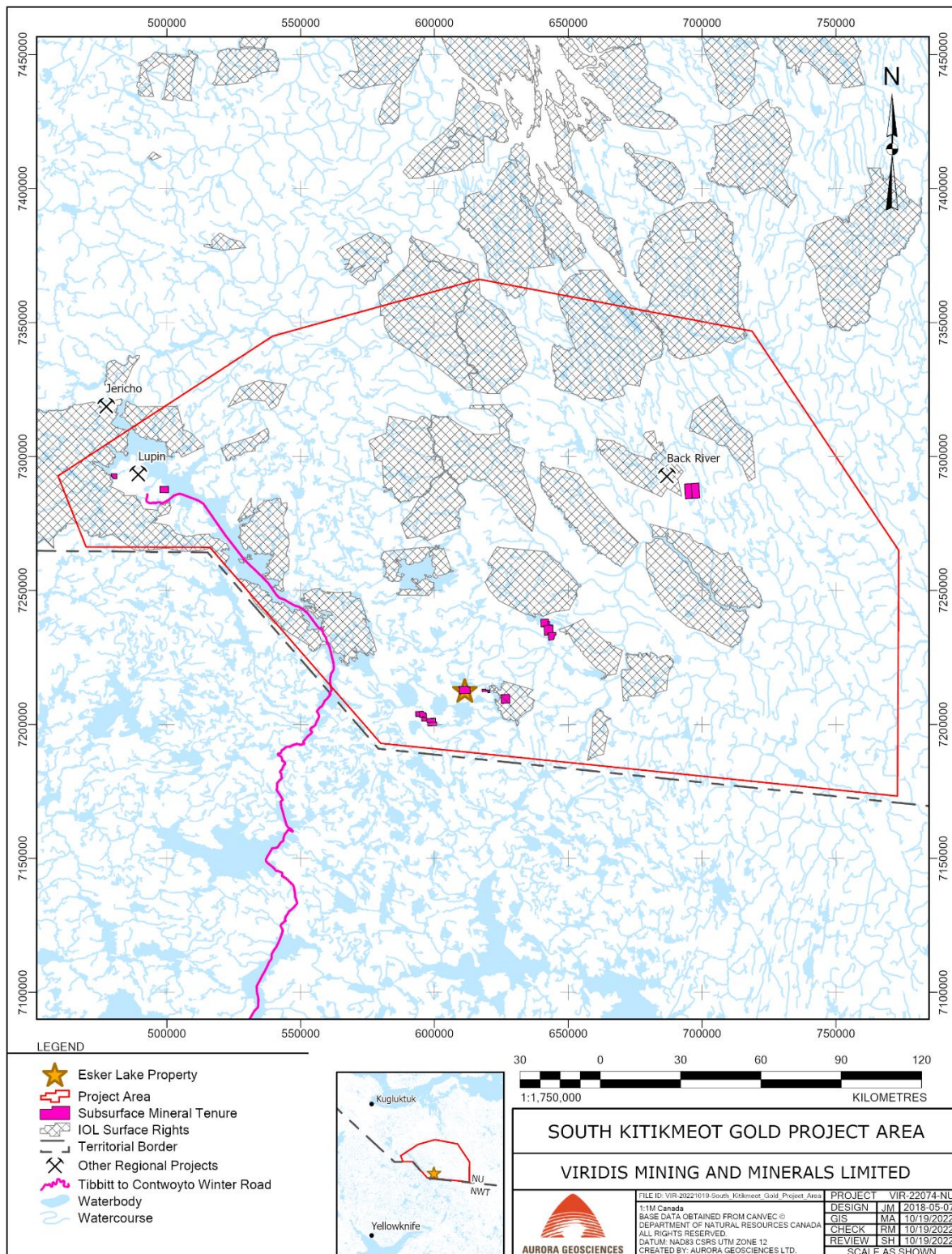


Figure 1. South Kitikmeot Gold Project, Kitikmeot Region, NU