

6. Map of the project site within a regional context indicating the distance to the closest communities.

The closest community with regularly scheduled air service is Kugluktuk (formerly Coppermine) which is located approximately 350 kilometres northwest of the Contwoyto Lake Concessions. First Air has scheduled flights everyday from Yellowknife to Kugluktuk. The main centre for all supplies, expediting services and transportation to the land holdings is through Yellowknife, situated approximately 410 kilometres southwest of the Contwoyto Concessions (Figure 6:1).

Figure 6:1 shows the location of the SLAVE PROJECT in relation to communities. Figure 6:2 shows the location of the CO-08 and CO-20 IOL boundaries. Figure 6:3 (Hood IOL) and Figure 6:4 (Contwoyto IOL) shows the outline of the Tahera IOL leases in relation to the encompassing Inuit Owned Land package.

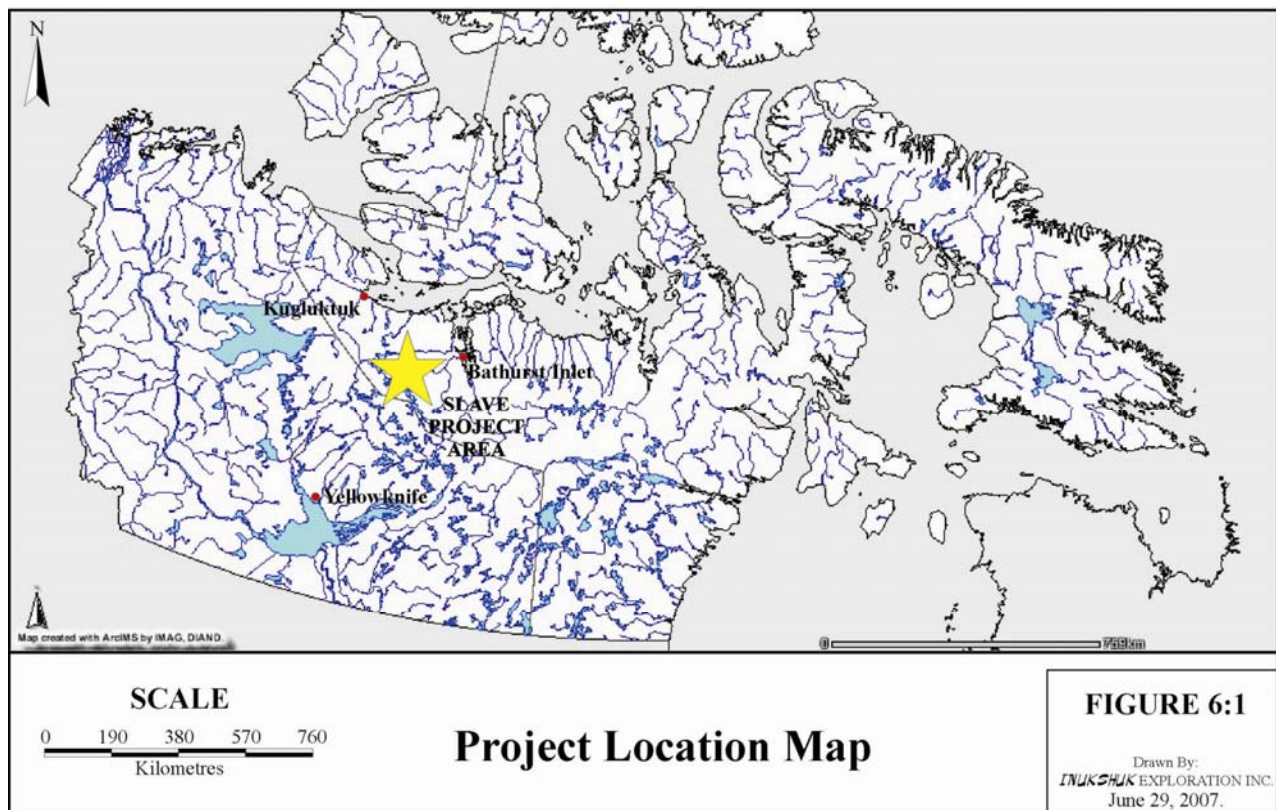


FIGURE 6:1 Location of the Slave Project Area within Nunavut, Canada.