

EMERGENCY RESPONSE PLAN

FOR THE ASTON BAY PROPERTY
(Formerly the Storm Property)
NUNAVUT, CANADA



COMMANDER
RESOURCES LTD.



ASTONBAY
HOLDINGS
TSX-V: BAY

Prepared By:



Effective June, 2015

Table of Contents

1. Introduction	3
1.1 Contact Details	3
1.2 Purpose and Scope	3
1.3 Other Plans	4
1.4 Project and Camp Description	4
2. Pre-emergency Planning	6
2.1 Prevention	6
2.2 Hazard Identification	7
2.2.1 Toxicological and Physiochemical Properties of Chemicals	7
2.2.2 Fire	7
2.2.3 Medical Emergency	7
2.2.4 Extreme Weather	8

Tables

Table 2.1: Possible Fire Locations and Equipment at the Aston Bay Property	7
---	----------

Appendices

Appendix A: Figures	9
Appendix B: Aston Bay Project Emergency Response Plan	13

1. Introduction

This Emergency Response Plan (ERP) applies to mineral exploration activities conducted by, or on behalf of, Commander Resources Ltd. ("Commander"), Aston Bay Holdings Ltd. ("Aston Bay") and/ or APEX Geoscience Ltd. ("APEX") at the Aston Bay Property (previously the Storm Property), Somerset Island, Nunavut.

The Aston Bay Property ("the Property") is a joint venture between Commander Resources Ltd. ("Commander") and Aston Bay, where Commander is the primary tenure holder and Aston Bay is the operator. APEX has been retained by Aston Bay and Commander as a consultant and is authorized to act on behalf of Aston Bay and Commander with regard to the Aston Bay Property. This ERP will come into effect June 2015, pending approval. Copies and updates to this plan may be obtained via APEX, Commander or Aston Bay.

Aston Bay, Commander and APEX are firmly committed to operating with the highest standards to protect the health and safety of all employees, contractors, the public, and the environment. This plan has been prepared as part of an overall emergency preparedness program, and will comply with all applicable regulations and industry standards.

1.1 Contact Details

Commander Resources Ltd.
11th Floor, 1111 Melville St.
Vancouver, BC V6E 3V6
Tel: (604) 685-5254
Fax: (604) 685-2814
www.commanderresources.com

Aston Bay Holdings Ltd.
222 – 400 E. Evergreen Blvd.
Vancouver, WA 98660
Tel: (360) 262-6969
www.astonbayholdings.com

APEX Geoscience Ltd.
200 – 9797 45th Ave.
Edmonton, AB T6E 5V8
Tel: (780) 439-5380
Fax: (780) 433-1336
www.apexgeoscience.com

1.2 Purpose and Scope

The purpose of the Aston Bay Property Emergency Response Plan (ERP) is to provide guidelines for all personnel that enable them to act appropriately and efficiently in the event of an emergency. Prompt, effective, and organized emergency response will ensure the safety of personnel, minimize effects on the environment, and help maintain a productive level of day to day operations at the Aston Bay Property.

The main goals of the plan are:

- To provide education and emergency preparedness training for all employees, contractors, and visitors at the Aston Bay Property.
- To enable personnel to respond to an emergency in a logical and coordinated manner in order to minimize injury, loss of property, and to mitigate environmental impacts.
- To maintain operations at a level as close as possible to normal during an emergency situation, and to restore normal operations quickly and efficiently.

The ERP will be available to all employees, contractors, and visitors at the Aston Bay Property. It will be posted at strategic areas around camp and at drill sites for reference. Personnel can contact their individual supervisors or the Project Supervisor if they wish to receive individual copies.

1.3 Other Plans

The ERP should be considered as a part of the Property wide management system. Other management plans in place at the Aston Bay Property include:

- Abandonment and Restoration Plan (ARP)
- Spill Prevention and Response Plan (SPRP)
- Environmental Management Plan (EMP)
- Fuel Management Plan (FMP)
- Waste Management Plan (WMP)

1.4 Project and Camp Description

The Aston Bay Property is located east of Aston Bay on Somerset Island, Nunavut, covering an area roughly 63 kilometres (km) long by 42 km wide (Figure 1 in Appendix A). It is approximately 112 km south of the community of Resolute Bay and about 1,500 km northwest of Iqaluit within the 1:250,000 scale NTS map sheet 058C. The Property includes the zinc-silver Seal Prospect and multiple copper showings, collectively known as the Storm Prospect.

Access to the Property is typically restricted to privately chartered helicopter or fixed wing aircraft from Resolute Bay, or the Arctic Watch Lodge, a wilderness adventure resort, located approximately 50 km north of the Property, on Cunningham Inlet.

Activities at the Aston Bay Property are anticipated to include regional soil and rock sampling, geological mapping, and ground geophysical surveys as well as diamond drilling at the Storm and Seal Prospects (Figure 1 in Appendix A). Typically, mineral exploration work in the region is seasonal, and can start as early as June and continue until as late as September. All exploration activities at the Aston Bay Property will be helicopter supported.

Commander is currently permitted, licensed and authorized to establish a small camp and conduct the diamond drilling at the Aston Bay Property (formerly Storm Property) in accordance with the Aboriginal Affairs and Northern Development Canada (AANDC) Land Use Permit N2010C0003, Nunavut Water Board (NWB) License 2BE-STO1015 and Nunavut Impact Review Board (NIRB) file number 10EN013. The AANDC permit is set to expire May 16, 2015. A new land use application is currently being applied for in Aston Bay's name, as they are the operator of the project. A water licence amendment and renewal is currently under application in the name of Commander. The water licence amendment will include a relocation of the camp and an increase to the quantity of water. The water licence will ultimately be converted into Aston Bay's name.

A 10 to 12 person seasonal tent camp is proposed to support exploration activities at the Aston Bay Property. A small temporary camp was constructed in the summer of 2014, at the site of an abandoned Cominco Ltd. ("Cominco") exploration camp, located at approximately 73°42'30" N latitude and 94°43'15" W longitude (Figures 1 and 2 in Appendix A). The abandoned camp site included a small air strip and is the storage site for the historic Cominco drill core. It is adjacent to a river, from which camp water was drawn. Upon completion of the 2014 program, the camp was removed, with the exception of the Cominco drill core, 10 drums of aviation fuel, 17 drums of diesel fuel, 2 propane tanks, one wooden emergency structure and an outhouse, all of which are intended to be used in the 2015 program. In addition, 90 empty drums are stored at the camp site and at a fuel cache near Aston Bay. The empty drums will be removed during the 2015 field program. All 2014 wastes were separated into combustible, recyclable or hazardous (petroleum products, batteries, etc.), subsequently removed from site and properly disposed of at an authorized facility in Resolute Bay.

During the 2014 program, a new camp location was scouted due to the limitations of the airstrip located at the current camp. A suitable new camp location was located at approximately 73°39'20" N latitude and 94°27'34" W longitude (Figure 2 in Appendix A). While the new camp is being constructed, the old camp will be used as an emergency backup and then subsequently removed and the site remediated. The AANDC Inspector will be notified upon completion of the site remediation, and a summary of the remediation efforts will be submitted as part of the annual reporting

The proposed camp location is along the Aston River, from which camp water can be drawn (Figure 2 in Appendix A). Structures for the proposed camp may include 6 sleeper tents, medical tent, kitchen, dry, office, shop, core shack, generator housing, incinerator, and 2 outhouses. The majority of the structures will be insulated Weatherhaven tents, or similar, with plywood floors. Figure 3 in Appendix A shows a possible layout for the proposed camp.

A drill program of 5,000 to 10,000 m is proposed for the 2015 season, utilizing one to two diamond drills. The average hole depth is expected to be approximately 200 m, up to a maximum proposed depth of 700 m. Similar programs are anticipated for 3 to 4 subsequent years. The areas for the proposed diamond drilling at the Storm and Seal Prospects are defined in figures 1 and 2 in Appendix A.

A fuel cache of up to 40,000 L (~ 200 drums) will be established on stable ground near to the camp, primarily to store diesel and jet fuel. Small quantities of gasoline and propane will also be stored. Arctic Insta-Berms, or other similar industry standard containment berms, will provide secondary containment for the camp fuel cache. Small temporary fuel caches of less than 4,000 L may also be required to supply the drilling and exploration programs. Within 30 days of establishing any temporary fuel cache, the AANDC will be notified of the details of the cache including: location, fuel type, container sizes, method of storage and date of removal.

2. Pre-emergency Planning

The responsibility for administration of the ERP will rest with the Project Supervisor. The Camp Manager and Project Geologist will support the Supervisor, and work together with the Site Safety Coordinator to ensure the plan is implemented effectively. Updates and modifications will be made as necessary.

2.1 Prevention

Aston Bay, Commander and APEX are committed to a prevention strategy of ongoing maintenance, inventory control, and staff training. The following will be standard practice at the Aston Bay Property:

- All equipment and machinery will be inspected and serviced regularly to ensure it is safe and in good working condition. Specific training will be provided for the safe use of each type of equipment and machinery on site.
- All hazardous materials will be stored in a safe and appropriate manner, as required for each individual product as set out in the manufacturer's Material Safety Data Sheets

(MSDS) and in accordance with the Aston Bay Property “Spill Prevention and Response Plan” and “Fuel Management Plan”.

- All hazardous materials will be subject to strict inventory control. Logs will be kept and regular inspections will be performed.
- Daily and weekly safety meetings will focus on improving safety and environmental performance. Personnel will be reminded of possible hazards and consequences, as well as any countermeasures and the resources available during an emergency situation.

2.2 Hazard Identification

2.2.1 Toxicological and Physiochemical Properties of Chemicals

The Material Safety Data Sheets (MSDS) will be posted in binders at all safety stations on site. They can also be found in the “Spill Prevention and Response Plan”.

2.2.2 Fire

All precautions possible will be taken to prevent fires at the site, because the difficulty in effectively fighting fires at this remote location. Locations of fire alarms and evacuations routes (if not obvious, e.g. only one door) will be posted in all work areas; fire extinguishers will be clearly marked in an approved manner. The potential for a fire at the Aston Bay Property are identified in Table 1.

Table 2.1: Possible Fire Locations and Equipment at the Aston Bay Property

Location	Precautions
Camp Tents	Fire extinguishers
Generator House	Chemical fire extinguishers
Fuel Cache	Fire extinguishers
Drills	Fire extinguishers

2.2.3 Medical Emergency

Medical emergencies can occur at any time and could be due to accidents or ill health.

Medical evacuations will be accomplished by means of fixed or rotary wing medevac to Resolute Bay. First Aid Attendants at the site will be able to provide first and to treat more minor injuries. A satellite phone system will be installed at the Aston Bay Property in order to

provide reliable telephone communications in the event of a medical emergency requiring consultation with outside medical help and/or requesting a plane for medevac.

See Appendix B for a list of emergency contacts for outside resources available for assistance with medical emergencies.

2.2.4 Extreme Weather

Weather extremes can include, but are not limited to heavy snowfall to blizzard conditions in winter, heavy rain causing flooding in summer and fog. Supervisory personal will be appropriately experienced in order to be able to judge when conditions deteriorate to the extent that work should cease and crews return to camp. Radio and/or satellite phone contact will be available throughout the Property and thus senior supervisory personnel can be advised at any time of deteriorating weather situations and the status of crews working outside.

Appendix A: Figures

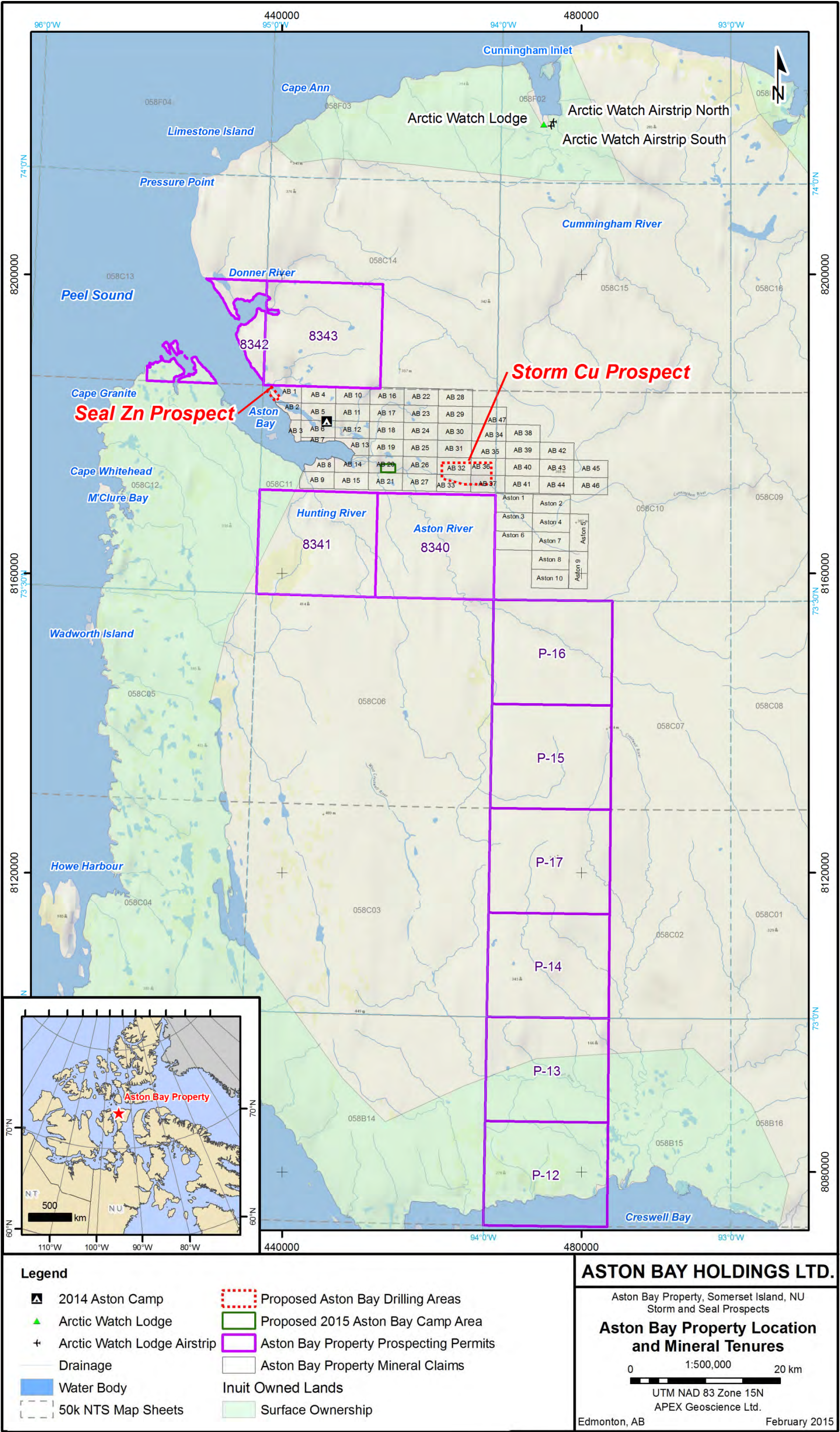


Figure 1

Effective June, 2015

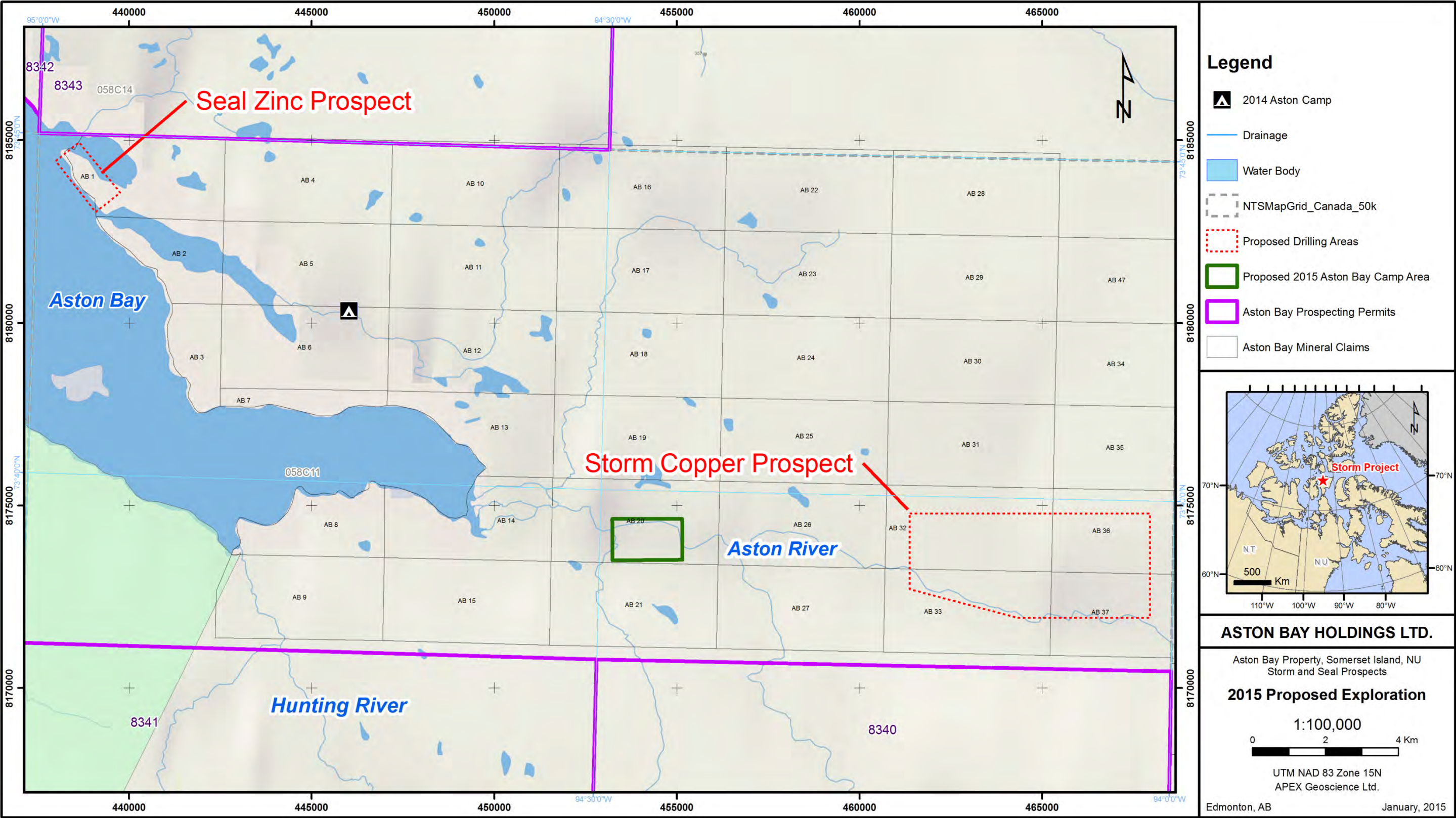


Figure 2



Figure 3

Appendix B: Aston Bay Project Emergency Response Plan

ASTON BAY PROJECT

EMERGENCY RESPONSE PLAN

In The Event of an **Emergency** and/or When Instructed by the Project Supervisor or First Aid Attendant to ...

Call the Nursing Station...

Primary

Health Center – Resolute Bay **1-867-252-3844**
(Head Nurse – Cathy Rose)

Or

1st Alternate

Health Center – Cambridge Bay **1-867-983-4500**
(Head Nurse – TBA)

Or

2nd Alternate

Health Center – Gjoa Haven **1-867-360-7441**
(Head Nurse – TBA)

Or

3rd Alternate

Health Center – Arctic Bay **1-867-439-8816**
(Head Nurse – TBA)

Be Prepared to Provide to the Nurse ...

1. Your Name and Location: Aston Bay Project

New 2015 Aston Bay Camp	Old 2014 Aston Bay Camp
94°27'34" W, 73°39'20" N	94°43'15" W, 73°42'30" N
454162E/ 8174172N Nad83z15	446118E/ 8180288N Nad83z15
Phone: TBA	Phone: TBA

2. Patient Location (if not in camp):

3. Number of Injured Persons:

4. Patient Information (for each injured person):

- a) Condition:** Conscious / Unconscious
Nature of Injury
- b) Age of Patient:**
- c) History:** What happened?
When did it happen?
- d) Any other relevant information that you know**
Medical History (ie. is diabetic, etc)

Obtain instruction from Nurse **OR First Aid Attendant as to the need for a Medi-vac**

If Medi-vac required, contact Medi-vac company and obtain information as to expected time of arrival (ETA) in camp and

...

24 Hour Medi-vac Service

Keewatin Air, Rankin Inlet
(Contact: Dispatch)

1-867-645-4455

OR

Keewatin Air, Iqaluit
(Contact: Dispatch)

1-867-979-3970

REPORT BACK TO FIRST AID ATTENDANT

Other Important Telephone Numbers

Field Numbers

Camp – Logistics Line	TBA
Camp – Fax Line	TBA
ABH #1 Iridium	TBA
ABH #2 Iridium	TBA
Heli Iridium Number	TBA

RCMP

RCMP – Resolute Bay	(Emergency)	1-867-252-1111
	(Non-Emergency)	1-867-252-0123
RCMP – Cambridge Bay	(Emergency)	1-867-982-1111
	(Non-Emergency)	1-867-982-0123
RCMP – Gjoa Haven	(Emergency)	1-867-360-1111
	(Non-Emergency)	1-867-360-0123
RCMP – Arctic Bay	(Emergency)	1-867-439-1111
	(Non-Emergency)	1-867-439-0123

ASTON BAY HOLDINGS

CEO, Benjamin Cox	Office (dir)	1-360-262-6969
	Cell	1-503-381-4955

APEX Geoscience Ltd.

Project Manager, Rob L'Heureux	Office	1-780-439-5380
	Cell	1-780-916-5482
President, Michael Dufresne	Office	1-780-439-5380
	Cell	1-780-916-5781

Expeditors

Discovery Mining Services – Yellowknife		1-867-920-4600
Kevin Vickers (Ops manager)	Cell	1-867-445-7089
Aziz Kheraj – Resolute (South Camp Inn)		1-867-252-3737

Helicopters

Matrix Aviation (Yellowknife)	1-604-345-9447
Mike Kenny	

<u>Kenn Borek Air</u> (Resolute) Tom Griffin	1-867-252-3845
---	----------------

<u>Arctic Watch Lodge</u>	1-819-459-1794
Josee and Richard Weber	

WSCC

Yellowknife Switchboard	1-867-920-3888
Toll Free	1-800-661-0792
Fax	1-867-873-4596
Toll Free Fax	1-866-277-3677
Chief Mine Inspector	1-867-669-4408
WSCC Inspector Martin Van Rooy	1-867-979-8527
WSCC Inspector Peter Bengts	1-867-920-4412
24 Hour Hotline For Serious Accidents	1-800-661-0792

Emergency Spill Report	1-867-920-8130
Public Health Office – YK	1-867-920-8646
Poison Control Center	1-800-332-1414