

ABANDONMENT AND RESTORATION PLAN

**FOR THE ASTON BAY PROPERTY
(ALSO KNOWN AS THE STORM PROPERTY)
NUNAVUT, CANADA**

Prepared For:

Aston Bay Holdings Ltd.
303-80 Richmond St. W
Toronto, ON M5H 2A4

Prepared By:

APEX Geoscience Ltd.
110-8429 24th St. NW
Edmonton, AB T6P 1L3

Effective April 2019

Table of Contents

1. Introduction	3
1.1 Contact Details	3
1.2 Purpose and Scope	3
1.3 Environmental Policy	4
1.4 Other Plans	4
1.5 Project and Camp Description	5
2. Schedule	6
3. Detailed Infrastructure and Inventory	7
3.1 Aston Camp Inventory (August 2018)	7
3.2 Storm Camp Inventory (August 2018)	7
3.3 Drill Equipment Inventory	9
4. Seasonal Shutdowns	10
4.1 Inspection and Documentation	10
4.2 Buildings, Contents and Fuel	10
4.3 Waste	11
4.4 Seasonal Restoration	11
5. Final Abandonment and Restoration	12
5.1 Inspection and Documentation	12
5.2 Buildings, Content, and Fuel	12
5.3 Waste	12
5.4 Restoration	12
6. Post Closure Site Monitoring	13
7. Emergency Contact Information	13

Tables

Table 1 Storm Camp Remaining Structures August 25, 2018	7
Table 2 Storm Camp Remaining Equipment August 25, 2018	8
Table 3 Storm Camp Remaining Fuel August 25, 2018	8
Table 3 Storm Camp Remaining Vehicles August 25, 2018	8
Table 5 Remaining Drill Equipment August 25, 2018	9
Table 6 Remaining Drill Consumables August 25, 2018	10
Table 7 Emergency Contact Information	13

Appendices

Appendix A: Figures	14
Appendix B: Seasonal Camp Shutdown Inspection Record	19
Appendix C: Example Camp Inventory Record	21

1. Introduction

This Abandonment and Restoration Plan (ARP) applies to mineral exploration activities conducted by Aston Bay Holdings Ltd. ("Aston Bay") at the Aston Bay Property (the "Property," also known as the "Storm Property"), Somerset Island, Nunavut.

This ARP will come into effect April 2019, pending approval. Copies and updates to this plan may be obtained by contacting Aston Bay Holdings Ltd.

1.1 Contact Details

Aston Bay Holdings Ltd.
80 Richmond St. W, Suite 303
Toronto, ON M5H 2A4
Tel: (416) 456-3516
www.astonbayholdings.com

1.2 Purpose and Scope

The purpose of the Aston Bay Property ARP is to provide guidelines to follow during seasonal shutdown and final abandonment of the Property, in order to return exploration sites to as near as possible to natural conditions. The ARP will be replaced, upon approval, if any there are significant changes to the activities outlined in the existing permits which warrant changes to the ARP. Minor changes will be submitted as an addendum to the ARP and submitted to the distribution list as required.

1.3 Environmental Policy

Aston Bay is firmly committed to the protection and conservation of the natural environment, and to ensuring the health and safety of all employees, contractors, and people in surrounding communities. The environmental policy for the Aston Bay Property is to:

- Develop the project in a socially and environmentally responsible manner;
- Fully comply with all applicable environmental legislation and regulations;
- Work in cooperation with federal, territorial, and local governments, as well as other relevant regulatory bodies, and the general public, on all aspects of environmental protection and policy;
- Assess and mitigate any potential environmental impacts and minimize risks to the health and safety of all employees, contractors, and the general public;
- Ensure contractors operate according to the Aston Bay Property environmental policies and procedures;
- Employ an emergency response plan to reduce impacts of unforeseen events;
- Provide ongoing instruction on Aston Bay Property environmental policies and spill prevention and response plans for all employees and contractors;
- Keep employees, contractors, inspectors, government, and regulatory bodies informed of any changes at the site or with project activities.

For further detail regarding environmental policy, please refer to the Aston Bay Property “Environmental Management Plan”.

1.4 Other Plans

The ARP should be considered as a part of the property wide management system. Other management plans in place at the Aston Bay Property include:

- Emergency Response Plan (ERP)
- Environmental Management Plan (EMP)
- Fuel Management Plan (FMP)
- Spill Prevention and Response Plan (SPRP)
- Waste Management Plan (WMP)

1.5 Project and Camp Description

The Aston Bay Property is located on northern Somerset Island, Nunavut in the Canadian Arctic Archipelago (Appendix A, Figure 1). The nearest community is the hamlet of Resolute Bay, located 112 km north of the Property, on Cornwallis Island. The Property is approximately 1,500 km northwest of Iqaluit, the capital of Nunavut, and about 1,500 km northeast of Yellowknife, Northwest Territories. It is situated in the Qikiqtaaluk Region of Nunavut, within the 1:50,000 scale NTS (National Topographic System) map sheets 058B14 and 15, and 058C02, 03, 06, 07, 10, 11, 13 and 14. The Aston Bay Property includes the Seal Zinc-Silver Prospect, and multiple copper showings, collectively known as the Storm Copper Prospect.

The Aston Bay Property comprises one hundred thirty-four contiguous mineral claims and twelve prospecting permits (Appendix A, Figure 2). The Property covers a combined area of approximately 976,357.1 acres (395,118.0 ha), and is bound by latitudes 72°45' N and 74°01' N, and longitudes 93°20' W and 95°20' W.

Access to the Property is typically restricted to privately chartered helicopter or fixed wing aircraft from Resolute Bay. Due to the remoteness of the Property location, the only people who would be immediately affected by a potential spill are employees and contractors.

Aston Bay is currently permitted, licensed and authorized to establish a camp and conduct diamond drilling at the Aston Bay Property in accordance with the Crown-Indigenous Relations and Northern Affairs Canada (CIRNAC) Land Use Permit N2015C0014, Nunavut Water Board (NWB) License 2BE-STO1520 and Nunavut Impact Review Board (NIRB) file number 10EN013.

Exploration activities at the Aston Bay Property are anticipated to include soil and rock sampling, geological mapping, ground and airborne geophysical surveys, and diamond drilling. Typically, mineral exploration work in the region is seasonal, and usually starts as early as June and continues until as late as September.

All exploration activities at the Aston Bay Property are helicopter supported and based out of a seasonal exploration camp known as Storm Camp, located along the Aston River at approximately 73°39'23" N latitude and 94°27'07" W longitude (Appendix A, Figures 3 and 4). The camp site is located on an elevated gravel bar adjacent to the Aston River and includes an airstrip suitable for landing a Twin Otter. The camp is designed to accommodate 30 to 40 people. The majority of the structures are insulated Weatherport tents with plywood floors.

A fuel cache of approximately 80,000L (~400 drums) will be established adjacent to the camp to support camp and exploration during the operating season. The cache will be primarily diesel and jet fuel, with small quantities of gasoline and propane. Each fuel type will be clearly marked. Jet

fuel will be stored separately from diesel and gasoline. All fuel will be stored within secondary containment berms. When possible, hydrocarbon filters will be utilized to drain any water from the berms. Small, temporary fuel caches of less than 4,000L may also be required to supply the drilling and exploration programs. Within 30 days of establishing any temporary fuel cache, CIRNAC will be notified of the details of the cache including: location, fuel type, container sizes, method of storage and date of removal.

Off-season fuel storage may include up to 60 drums of jet fuel and diesel, and up to 20 cylinders of propane. A berm equipped with a cover and hydrocarbon filter is available for off-season storage of fuel drums. Propane cylinders will be stored upright and secured to a plywood structure with strapping.

The previous camp site, known as Aston Camp, is located at approximately 73°42'30" N latitude and 94°43'15" W longitude. Aston Camp is the storage site for historical drill core and was used to support exploration in 2014 and 2015. Aston Camp has been closed, with the exception of one 14'x16' wooden shack containing survival equipment.

2. Schedule

Exploration work at the Aston Bay Property is seasonal, commencing as early as June and continuing through to as late as September. A diamond drilling program of 5,000 to 10,000 metres is anticipated for 2019. Additional exploration work may include soil and rock sampling, mapping and geophysical surveys. Similar programs are anticipated for 3 to 4 subsequent years.

Camp opening typically commences in early to mid-June. Exploration activities generally start 1-2 weeks later. Certain activities, such as emplacement of fuel caches may be completed earlier between March and May, depending on snow and ice conditions. The timing of seasonal shutdown is highly dependent on weather and budget, and may commence in mid to late August or as late as September.

Final abandonment and restoration will commence as soon as possible after it has been determined that the project does not warrant further exploration or following commercial production. The duration of the final abandonment and restoration is dependent on the scale of infrastructure on site and on environmental parameters (physical, biological, and socio economic). All abandonment and restoration work will be completed prior to the date of expiry of any existing or future applicable land use permits and water licenses.

3. Detailed Infrastructure and Inventory

3.1 Aston Camp Inventory (August 2018)

As of August 25, 2018, all that remains at Aston Camp is the historical drill core, a small amount of lumber and one 14'x16' wooden storage shack. The lumber is stacked neatly against the side of the shack. Aston Bay elected to keep the shack on site to store survival equipment and to serve as a shelter for personnel working on the historical core in future years.

3.2 Storm Camp Inventory (August 2018)

Camp equipment was mobilized from Yellowknife to Resolute Bay ahead of the program by chartered aircraft and was shuttled to site by Twin Otter at the start of the program. Eighteen structures were constructed during 2018, in addition to the four existing plywood structures already on site (pacto toilet shack, storage shack, water tank shack, generator shack). With the exception of the kitchen and core cutting shack, the new structures were all insulated Weatherport tents, built upon existing wooden floors. The kitchen was constructed using dimensional lumber and plywood, upon an existing wooden floor.

Upon completion of the program, all tents and plywood buildings were left in place for future use. Electronics and communications gear were removed from site. Most other camp equipment was stored on site inside of the tents or plywood buildings. All remaining lumber was stacked at the east end of camp for future use. Tables 1 to 4 list the structures, major equipment, vehicles and fuel left on site at the close of the season on August 25, 2018.

Table 1 Storm Camp Remaining Structures August 25, 2018

Quantity	Item
1	16'x32' plywood kitchen building.
1	14'x32' plywood floor for core shack.
1	12'x20' plywood latrine shack. Includes 5 pacto toilets.
1	10'x16' plywood storage shack.
1	10'x12' plywood generator shack. Includes exhaust piping, etc.
1	12'x12' plywood core cutting shack.
11	14'x16' insulated Weatherport tents on plywood floor to serve as sleeper tents. Includes plywood beds, tables, chairs etc.
3	14'x16' insulated Weatherport tents on plywood floors to serve as dries. Includes shower stalls, sink, plumbing, etc.
2	14'x16' insulated Weatherport tents on plywood floors to serve as office and first aid tent. Includes tables, chairs, etc.

Table 2 Storm Camp Remaining Equipment August 25, 2018

Quantity	Item
2	Water tanks (350gal & 250gal)
2	Hot water tanks
2	Water supply pumps with fish screen and hose line
2	Water pressure pumps
1	14 kVA diesel generator
2	5 kW gas generators
1	Electrified bear fence (taken down at end of season)
1	Dual chamber controlled air incinerator
4	Refrigerators
3	Chest freezers
2	Cooking stoves
1	Dishwasher
3	Washing machines
3	Dryers
17	Toyotomi heating stoves
4	Oil drip stoves
5	Pacto toilets
3	Containment berms for fuel cache & drill equipment
20	Mini berms for tent drums and fuel transfer
	Heavy electrical cables and panel boxes
	Various lumber (stacked by generator shack)
	Various office, camp and medical supplies

Table 3 Storm Camp Remaining Fuel August 25, 2018

Quantity	Item
17	Diesel (205L drum)
26	Jet Fuel (205L drum)
2	Gasoline (205L drum)
7	Propane (100lb cylinder)

Table 4 Storm Camp Remaining Vehicles August 25, 2018

Quantity	Item
2	All-terrain vehicles with trailers

3.3 Drill Equipment Inventory

Two diamond drills were mobilized to the Property for the 2018 season. The drills, including most of the ancillary equipment and consumables, were left on site for subsequent drill programs. All equipment was drained of fuel and oil for off-season storage. Tables 5 and 6 list the drilling equipment and consumables left on site at the close of the season on August 25, 2018.

Table 5 Remaining Drill Equipment August 25, 2018

Quantity	Item
1	Zinex A-5 diamond drill with engine, feed frame, control panel, drill head, foot clamp, wireline and drill shack
1	MPP Discovery II diamond drill with engine, feed frame, control panel, drill head, foot clamp, wireline and drill shack
1	Spare engine
1	Spare rotation motor
1	Spare drill head
2	Spare feed cylinders
2	Spare foot clamps
2	Spare winch and pump drive motors
1	Spare main hydraulic pump
1	Spare wireline winch (2 spare rolls of wireline)
6	5 kW gas generators
2	Welders
5	Supply pumps (1 spare transmission)
4	Trash pumps
3	Spare down hole pumps
2	Mud separators
6	Mud tanks
8	Coil stoves
3	Diesel heaters
6	Fuel tanks
2	Fly baskets
266	3m NQ drill rods
90	1.5m casing
16	Outer tubes
18	Inner tubes
75	200 psi water line
75	400 psi water line
4	Spill kits
2	Survival shacks
	Various fittings & tooling

Table 6 Remaining Drill Consumables August 25, 2018

Quantity	Item
112	Various drill muds (5 gal pails)
23	Motor oil (5 gal pails)
30	Hydraulic oil (5 gal pails)
36	Antifreeze
140	Calcium Chloride (50lb bags)

4. Seasonal Shutdowns

4.1 Inspection and Documentation

Prior to seasonal shutdown, a complete inspection of all areas will be conducted. Photographs at all sites (camp, fuel cache, drilling, etc) will be taken to document the conditions prior to leaving the site for winter, and will be archived along with photos taken at the beginning of each season. Copies of these photos will be included as part of the Aston Bay Property Annual Report. An example copy of the Seasonal Camp Inspection Record is attached in Appendix B.

4.2 Buildings, Contents and Fuel

A full inventory of all structures, equipment, fuel, and other supplies will be taken at the beginning and end of each exploration season. An example of the Camp Inventory Record is attached in Appendix C.

All food, wastes, empty fuel drums, and valuable or sensitive equipment will be removed from site. All structures to be left on site will be winterized, closed off, and secured. One or more tent(s) will be designated to house any chemicals or other hazardous materials that are not suited to outdoor storage. All water tanks and pipes will be drained at the end of each season. Pumps and hoses will be drained and stored inside a tent. All mechanical equipment, including vehicles, drill equipment, and generators will be winterized, be drained of fuel and, where necessary, stored in berms for secondary containment.

The remaining fuel cache will be secured and covered to mitigate the influx of snow and water. Fuel drums will be stored on their sides in organized rows with the bungs in the three o'clock and nine o'clock positions. All fuels and other hazardous materials will be stored within "Arctic Insta-Berms", or similar products, for secondary containment. "RainDrain" or similar hydrocarbon filtration systems will be used to safely remove any water collected inside the berms, and as a safeguard against any potential overflows of contaminated water.

4.3 Waste

All wastes will be separated into combustible, recyclable or hazardous.

Combustible Waste: All combustible waste will be incinerated in accordance with the Nunavut Environmental Guideline for the Burning and Incineration of Solid Waste. Any residual waste (ash) will be placed in sealed containers and backhauled to Resolute Bay for proper disposal.

Non-Combustible, Recyclable and Hazardous Waste: All non-combustible, recyclable and hazardous wastes will be sealed in appropriate containers and backhauled to Resolute Bay for proper disposal.

Grey Water: Camp grey water will be stored and treated in an excavated sump, which will allow for slow infiltration into the soil and will be located at least 31 m away from a water body. If available, coarse gravel will be placed in the bottom of the sump to provide filtration, and supports will be built on the sides to prevent slumping. Filters and grease traps will be installed on kitchen drains to ensure solid food wastes do not enter the sumps and have the potential to attract wildlife. When full, greywater sumps will be covered with enough material to allow for future ground settlement.

Sewage: Pseudo toilets will be used at Storm Camp. All pseudo bags will be incinerated on site in a batch feed dual-chamber controlled air incinerator. If privy pits (outhouses) are used, they will be located at least 31 m away from a water body. To control sewage pathogens, outhouses will be periodically treated with lime. When full, the pits will be covered with at least 30 cm of compacted soil.

Contaminated soils/snow: All contaminated soil and snow will be stored in empty 205 liter drums, and will be transported to Resolute Bay for proper disposal.

Empty barrels/ fuel drums: Empty drums will be collected and transported to Resolute Bay either for disposal at an approved site or for refilling.

For more information on waste generation and management see the Aston Bay Property “Waste Management Plan.”

4.4 Seasonal Restoration

Any contaminated areas around the camp or drill sites will be treated in accordance with the Aston Bay Property “Spill Prevention and Response Plan.” Any washed out areas will be filled and re-contoured to natural levels. Any areas of disturbed vegetation, including camp, fuel caches or

drill sites will be photographed and managed as per recommendation of the CIRNAC inspector. Remediation procedures might include fertilization to encourage re-growth.

5. Final Abandonment and Restoration

5.1 Inspection and Documentation

Prior to final abandonment, a thorough inspection of all areas will be conducted. Any contaminated areas around the camp or drill sites that have gone unnoticed will be treated as per the “Spill Prevention and Response Plan.” Photographs will be taken to include in the final reports submitted to the CIRNAC Inspector and as part of the Annual Report submitted to the CIRNAC, NWB and NIRB. All relevant regulatory agencies will be notified upon final abandonment of the Property.

5.2 Buildings, Content, and Fuel

Prior to land use permit, claim or lease termination, all structures, equipment, supplies, and fuel will be removed from the Property with the exception of the drill core stacks, which will be permanently secured on site. Tent floors will be burned in accordance with the Nunavut Environmental Guideline for the Burning and Incineration of Solid Waste, and tent sites may be fertilized, as per recommendation by the Inspector, to encourage re-vegetation.

Drills and drilling equipment will be dismantled, packaged, secured, and shipped as per the drill contract. All drill casing will be cut down to the ground.

All remaining fuel and empty drums will be removed from site. The soil under and surrounding any area where fuel was stored will be thoroughly inspected for any contamination and photographs will be taken.

5.3 Waste

All wastes will be disposed of in accordance with the Aston Bay Property “Waste Management Plan” and any contamination will be treated as per the “Spill Prevention and Response Plan”. Sumps will be inspected to ensure there is no leaching or run-off. Back filling and leveling will be employed as necessary.

5.4 Restoration

Tent sites, drill sites, and any other areas disturbed by activities related to exploration at the Aston Bay Project will be fertilized as recommended by the CIRNAC Inspector to encourage re-vegetation. Eroded or washed out areas related to exploration activities will be filled and re-

contoured to natural levels. Any contaminated areas around the camp or drill sites that have gone unnoticed will be treated as per the “Spill Prevention and Response Plan.”

6. Post Closure Site Monitoring

After reclamation is complete, annual monitoring will take place. The monitoring will consist of soil and water testing, measuring and documenting plan re-growth, examining potential run-off and erosion problems, and checking the stability and condition of the core boxes. Reports, including photographs, will be submitted to the appropriate regulatory bodies.

7. Emergency Contact Information

Table 7 Emergency Contact Information

Contact	Telephone Number
24 Hour Spill Report Line	1-867-920-8130
Thomas Ullrich, Project Supervisor COO & Executive VP (Aston Bay Holdings Ltd.)	1-416-456-3516
Chris Livingstone, Project Supervisor Project Geologist (APEX Geoscience Ltd.)	1-604-696-9628
CIRNAC Land Administration Division	1-867-975-4283
CIRNAC Resource Management Officer	1-867-975-4295
CIRNAC Water Resources Officer	1-867-975-4296
Environment Canada	1-867-975-4644 24-hr page: 867-766-3737
Government of Nunavut Department of Environment	1-867-975-7700 (Iqaluit) 1-867-252-3879 (Resolute)
DFO (Central and Arctic Branch)	1-519-383-1813
Nunavut Water Board	1-867-360-6338
RCMP – Resolute Bay (non-emergency)	1-867-252-0123
Resolute Bay Health Centre	1-867-252-3844
Baffin Regional Hospital	1-867-979-7309
Medevac (Keewatin Air)	1-867-979-3970
Poison Control	1-800-332-1414
Storm Camp Main Line	TBD*
Storm Camp Satellite Phone	TBD*

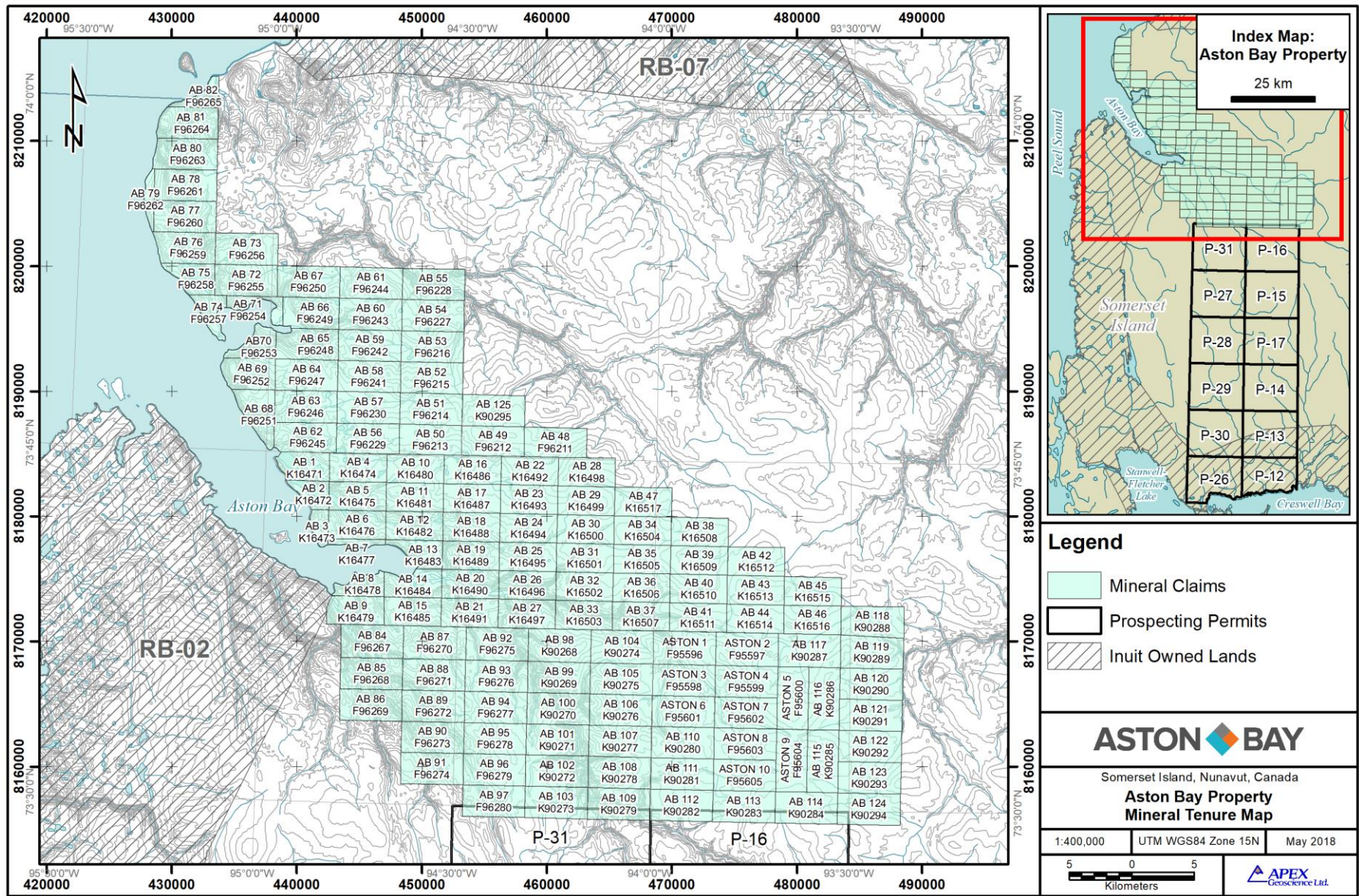
* The Phone numbers for the satellite phone system used in camp change annually.

Appendix A: Figures

Figure 1 Aston Bay Property Location

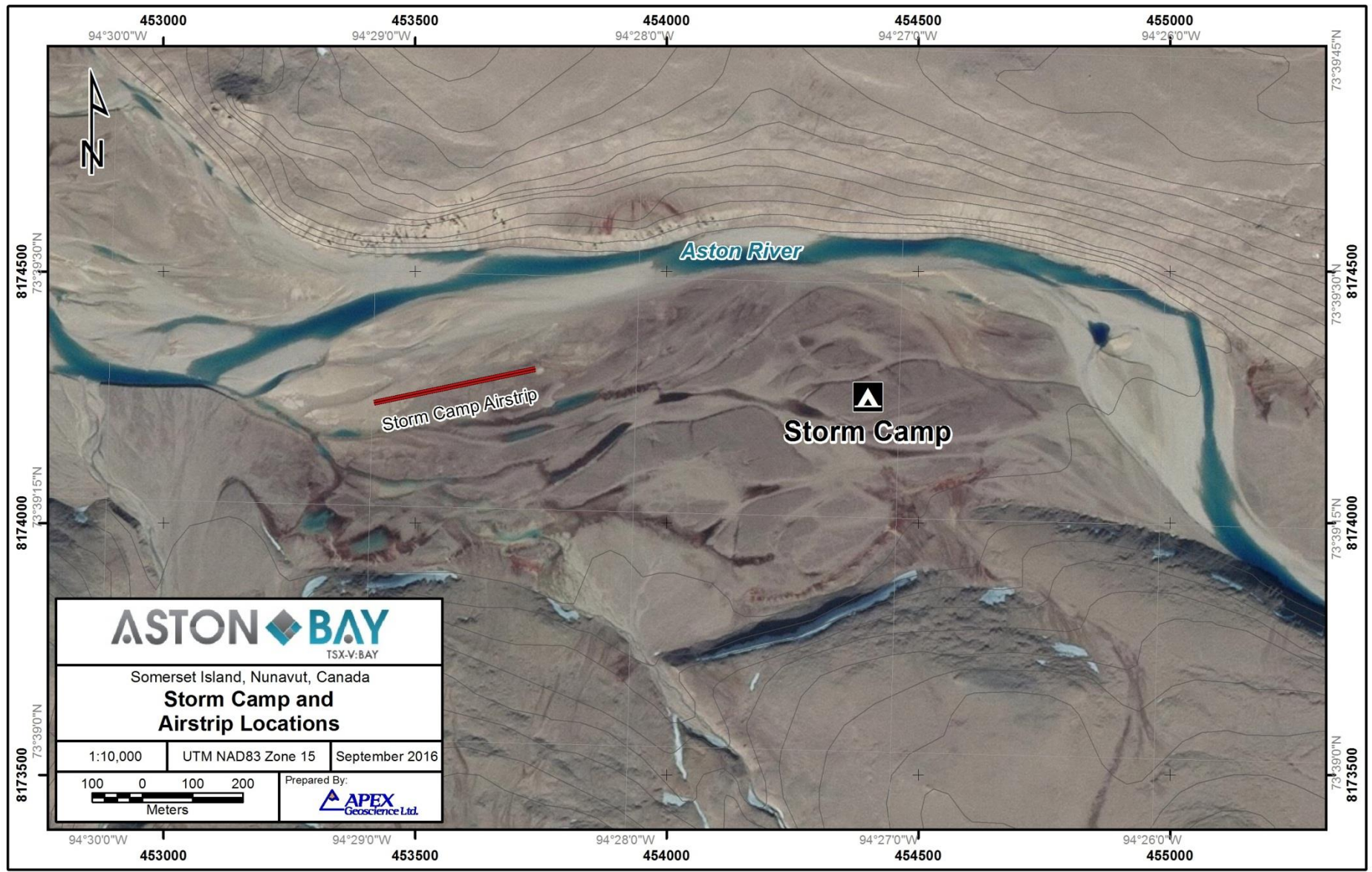


Figure 2 Aston Bay Property Mineral Tenures



Effective April 2019

Figure 2 Storm Camp and Airstrip Locations



Effective April 2019

Figure 4 Storm Camp During Operations (2018)



Appendix B: Seasonal Camp Shutdown Inspection Record

Seasonal Camp Shutdown Inspection Record			
Area	Complete	Comment	Inspector
General Camp area			
General camp area inspected for any waste, spills or contamination			
General camp area secure for winter			
All combustible and non-recyclable waste incinerated			
All non-combustible waste prepared for removal			
Any unnecessary or excessive vegetation damage			
Buildings and Content			
All tents and building complexes secured for the winter and cleared of any debris.			
All office equipment; furniture; kitchen equipment; recreational equipment and other mobile heavy equipment will be winterised and secured			
Any equipment not capable of withstanding the harsh winter conditions will be removed			
Area inspected for petroleum spills or contamination.			
Water Supply System			
Water pumps, filtering systems, water lines and any other equipment associated with the water supply system drained and winterised			
Water pump shed will be secured.			
Area inspected for petroleum spills or contamination.			
Sewage System			
Greywater system drained (ie. no greywater remaining in the discharge pipe).			
Greywater sumps treated if required, filled and recontoured			
Privy Pits treated with lye and winterized			
Privy Pits secure and cleared of any debris			
Area inspected for petroleum spills or contamination.			
Waste Incinerator			
Incinerator Fuel supply shut off using all valves			
Incinerator Fuel in appropriate and functional secondary containment adjacent to the incinerator			
Area inspected for petroleum spills or contamination.			
Incinerator area cleared of any debris			
Electrical System			
Generator shack and surrounding area inspected for signs of spills and remaining wastes such as oil and grease.			
Generator shed is lined with enviromat in the event any external spills go unnoticed			
Generator drained of fuel and winterized			
Generator shack secured for winter			
All electrical wires, plugs and sockets which remain in their installed locations are safe and secure			
All electrical cords temporarily connected to a buildings or machinery unplugged, rolled and stored			
Camp Heating Systems			
Each 205 L fuel barrel attached to respective tent or building secured and within secondary containment			
Any remaining fuel in lines will be burned out.			
Empty propane cylinders ready for transport for refilling or recycling.			
Any sleeping quarters converted to electric heat are secured			
Petroleum Products and Storage Facilities			
All Fuel stored in appropriate and functional secondary containment			
All Fuel storage areas clearly marked in the event snow clearing activities are required during spring camp opening			
All Fuel storage areas GPS location recorded			
All Fuel labelled properly			
Area inspected for spills or contamination.			
Fuel storage area cleared of any debris.			
Chemicals and Hazardous Waste			
All chemicals stored in appropriate building or on within appropriate functional secondary containment			
All household cleaners properly secured and stored in kitchen and dry.			
All empty bags/containers removed for proper disposal			
Any remaining waste fuel, oil and grease stored in approved and labelled containers for reuse during summer operations.			
Any hazardous waste that cannot be reused properly stored, sealed, labels, and prepared for removal			
Area inspected for spills or contamination.			
Area cleared of any debris.			
Spill Response Kits			
Spill kit inventory performed			
Spill kits not needed over winter relocated to secured building			
Spill kits needed over winter (ie. for the remaining petroleum areas) properly stocked and secure			
Emergency Response			
Fire extinguishers in working order and secure in all necessary locations			
Smoke/CO2 detectors in working order and secure in all necessary locations			
Fire extinguishers used prepared for removal for refilling			
Transportation			
Transport areas including air strips, helipads, ATV trails, docks and footpaths inspected for spills or contamination.			
Vehicles remaining onsite moved into secure buildings			
Vehicles remaining onsite winterized			
Drill Sites			
Diamond drills dismantled and ready for demobilization or secure in designated storage area			
Diamond drills remaining on site winterized			
Any drill casing unable to be removed flush cut so as to not pose a hazard			
Drill sites re stored and inspected for any waste, spills or contamination			
Drill sites photographed before drilling and after restoration			
Documentation			
Proper documentation and approvals for all inert and Hazardous waste transport and receiving			
Notification to all required authorities of pending seasonal shut down			
Baseline samples (ie. water, soil, air quality) collected and all data recorded			
Inspections recorded, dated and signed			
Photos taken of camp, drill sites, fuel caches and any other important locations/items			
Photos of drill lay down storage area			
GPS coordinates recorded for camp, fuel storage areas, drill sites, wildlife or habitat sightings, Archeological/paleontological sites or any area/items of interest			
Descriptions recorded for all wildlife or habitat sightings, Archeological/paleontological sites or any area/item of interest			
Year-end inventory of all equipment and buildings left on site			
List of all equipment, items and repairs required for next operating season			

Appendix C: Example Camp Inventory Record

Seasonal Camp Shut Down Inventory

Kitchen Tent

<u>Container</u>	<u>Item</u>	<u>Quantity</u>
Kitchen Box 1 -	Dishes, Cutlery, Cooking Utensils	
	Dinner plates, dessert plates, bowls	
	Coffee cups	
	Juice cups	
	Forks, spoons, butter knives	
	Steak knives	
	Pearing Knives	
	Cutting knives	
	Cutlery trays	
	Serving spoons	
	Slotted serving spoons	
	Wooden spoons	
	plastic spatulas	
	Whisks	
	Can openers	
	Cutting boards	
	Tongs	
	Disposable drinking cups	
	Tupperware storage containers	

Kitchen Box 2 - Cookware, Bakeware

	Square cake pans	
	Round cake pans	
	Pie pans	
	Cookie sheets	
	cake cooling rack	
	Bread loaf tins	
	non stick fry pan	
	Large metal bowls	
	Small metal bowls	
	Soup pots with lids	
	Large pots with lids	
	Small pots with lids	
	5 gallon galvanized pot	
	2 gallon galvanized pot	
	1 gallon galvanized pot	
	Sauce pan with lid	
	Omelet pan with lid	
	Roasting pans with lids	

Kitchen Box 3 - Small Appliances & Cleaning

	Metal sieves	
	Plastic sieves	
	Quisenaar with grating and slicing blade	
	Kitchen aide mixer	
	Coffee Makers	
	Electric kettle	
	Toaster	
	Pump style coffee thermos	
	Clothes pins	
	Hand pump for large water bottles	

<u>Container</u>	<u>Item</u>	<u>Quantity</u>
Kitchen Box 4 -	Large Kitchen Items	
	Stand up fridge	
	Propane stoves	
	Overhead fans	
	Grease traps for under sinks	
	Water cooler	
	Chest freezers	
	Barbeque	
	Metal brush for BBQ grill	
	Folding tables	
	Folding chairs	
	Plastic bins for holding vegetables	
	microwave	
	Floor mats	

Kitchen Box 5 - Cleaning

	Teatowels	
	Dishtowels	
	Rags	
	Dish racks	
	Scrub brushes	
	Rubber gloves	
	Liquid handsoap	
	Smoke/CO2 Detectors	
	Brooms	
	Dust Pans	
	Garbage Bins	
	Wooden Beds	
	Foamies	

Needed For Next Season

23



Aston Bay Property Abandonment and Restoration Plan

Seasonal Camp Shut Down Inventory

Generator Shack

Container	Item	Quantity	Container	Item	Quantity
Generator Shack Box 1 - Large Gear			Generator Shack Box 4 -		
	Generators				
	Incinerator				
	Pump for incinerator				
	Barrel Lifter				
	Gas Wobble Pump				
	Diesel Wobble Pump				
	Tie Down Kit for Tidy Tank				
	Rock saw				
	Rock saw blades				
	Spade shovels				
	Square shovels				
	Geotools				
	Sledge hammers				
	Oil stoves and elbows				
	Axes				
	Tiger torch				
	Spill kits				
	Breaker panels				
Generator Shack Box 2 - Small Gear			Generator Shack Box 5 -		
	Feet of 3/4" Fuel Line				
	Feet of 3/8" Fuel Line				
	Battery Charger				
	Booster Pack				
	Ratchet Straps				
	15' Extension Cord				
	Oil Filter Wrench				
	Large Channel pliers				
	Fuel Filters				
	Oil Filters				
	Air Filters				
	Roll of Absorbent Material				
	Power Bar				
	Axe				
	Pry Bar				
	Dewalt Corded Drill				
	Sets of Mastercraft Drill Bits				
Generator Shack Box 3 - Tools			Needed For Next Season		
	Set of Hex Driver Bits				
	Vise Grips				
	Pliers				
	Side Cutters				
	Channel Pliers				
	Files (Wood, Metal, Round)				
	Drivers Bits				
	Utility Knife				
	Caulking Gun				
	"T-50" Stapler				
	Packs of "T-50" 1/4" Staples (5000 each)				
	New Dewalt 7 1/4" Circular Saw Blade				
	Pair Tin Snips				
	Stanley 12" Steel Chisel				
	Rolls of "Petro" Thread Tape				
	6" Speed Square				
	Ratchet Set				
	Jigsaw				
	Set Of Metric Wrenches				
	Set Of Imperial Wrenches				