



Your Project #: 107431-02  
 Site Location: STORM CAMP  
 Your C.O.C. #: C#759651-01-01

**Attention: Jess Newman**

AUSENCO SUSTAINABILITY ULC  
 18th Floor, 4730 Kingsway  
 Burnaby, BC  
 Canada V5H 0C6

**Report Date: 2025/07/23**  
 Report #: R3688549  
 Version: 1 - Final

**CERTIFICATE OF ANALYSIS**

**BUREAU VERITAS JOB #: C562373**

**Received: 2025/07/14, 09:15**

Sample Matrix: Soil  
 # Samples Received: 5

Analyses	Quantity	Date	Date	Laboratory Method	Analytical Method
		Extracted	Analyzed		
BTEX/F1 by HS GC/MS/FID (MeOH extract) (1)	5	2025/07/16	2025/07/17	AB SOP-00039	CCME CWS/EPA 8260d m
F1-BTEX (1)	5	N/A	2025/07/17		Auto Calc
CCME Hydrocarbons (F2-F4 in soil) (1, 2)	5	2025/07/16	2025/07/19	AB SOP-00036	CCME PHC-CWS m
Moisture (1)	5	N/A	2025/07/17	AB SOP-00002	CCME PHC-CWS m
VOCs in Soil by HS GC/MS (Std List) (1)	5	2025/07/16	2025/07/19	AB SOP-00056	EPA 5021a/8260d m

**Remarks:**

Bureau Veritas is accredited to ISO/IEC 17025 for specific parameters on scopes of accreditation. Unless otherwise noted, procedures used by Bureau Veritas are based upon recognized Provincial, Federal or US method compendia such as CCME, EPA, APHA or the Quebec Ministry of Environment.

All work recorded herein has been done in accordance with procedures and practices ordinarily exercised by professionals in Bureau Veritas' profession using accepted testing methodologies, quality assurance and quality control procedures (except where otherwise agreed by the client and Bureau Veritas in writing). All data is in statistical control and has met quality control and method performance criteria unless otherwise noted. All method blanks are reported; unless indicated otherwise, associated sample data are not blank corrected. Where applicable, unless otherwise noted, Measurement Uncertainty has not been accounted for when stating conformity to the referenced standard.

Bureau Veritas liability is limited to the actual cost of the requested analyses, unless otherwise agreed in writing. There is no other warranty expressed or implied. Bureau Veritas has been retained to provide analysis of samples provided by the Client using the testing methodology referenced in this report. Interpretation and use of test results are the sole responsibility of the Client and are not within the scope of services provided by Bureau Veritas, unless otherwise agreed in writing. Bureau Veritas is not responsible for the accuracy or any data impacts, that result from the information provided by the customer or their agent.

Solid sample results, except biota, are based on dry weight unless otherwise indicated. Organic analyses are not recovery corrected except for isotope dilution methods.

Results relate to samples tested. When sampling is not conducted by Bureau Veritas, results relate to the supplied samples tested.

This Certificate shall not be reproduced except in full, without the written approval of the laboratory.

Reference Method suffix "m" indicates test methods incorporate validated modifications from specific reference methods to improve performance.

\* RPDs calculated using raw data. The rounding of final results may result in the apparent difference.

(1) This test was performed by Bureau Veritas Calgary, 4000 - 19 St. , Calgary, AB, T2E 6P8

(2) All CCME results met required criteria unless otherwise stated in the report. The CWS PHC methods employed by Bureau Veritas conform to all prescribed elements of the reference method and performance based elements have been validated. All modifications have been validated and proven equivalent following Alberta Environment's Interpretation of the Reference Method for the Canada-Wide Standard for Petroleum Hydrocarbons in Soil, Validation of Performance-Based Alternative Methods September 2003. Documentation is available upon request. Modifications from Reference Method for the Canada-wide Standard for Petroleum Hydrocarbons in Soil-Tier 1 Method: F2/F3/F4 data reported using validated cold solvent extraction instead of Soxhlet extraction.



Your Project #: 107431-02  
Site Location: STORM CAMP  
Your C.O.C. #: C#759651-01-01

**Attention: Jess Newman**

AUSENCO SUSTAINABILITY ULC  
18th Floor, 4730 Kingsway  
Burnaby, BC  
Canada V5H 0C6

**Report Date: 2025/07/23**  
Report #: R3688549  
Version: 1 - Final

**CERTIFICATE OF ANALYSIS**

**BUREAU VERITAS JOB #: C562373**

**Received: 2025/07/14, 09:15**

Encryption Key

Please direct all questions regarding this Certificate of Analysis to:  
Danielle Boisvert, Customer Solutions Representative  
Email: danielle-andrea.boisvert@bureauveritas.com  
Phone# (780)782-5528

=====

This report has been generated and distributed using a secure automated process.

Bureau Veritas has procedures in place to guard against improper use of the electronic signature and have the required "signatories", as per ISO/IEC 17025, signing the reports. For Service Group specific validation, please refer to the Validation Signatures page if included, otherwise available by request. For Department specific Analyst/Supervisor validation names, please refer to the Test Summary section if included, otherwise available by request. This report is authorized by Scott Cantwell, General Manager responsible for Alberta Environmental laboratory operations.



BUREAU  
VERITAS

Bureau Veritas Job #: C562373  
Report Date: 2025/07/23

AUSENCO SUSTAINABILITY ULC  
Client Project #: 107431-02  
Site Location: STORM CAMP  
Sampler Initials: GS

### PETROLEUM HYDROCARBONS (CCME)

Bureau Veritas ID		DPA477	DPA478	DPA479	DPA480	DPA481		
Sampling Date		2025/07/11 14:38	2025/07/11 14:40	2025/07/11 15:00	2025/07/11 15:05	2025/07/11 15:10		
COC Number		C#759651-01-01	C#759651-01-01	C#759651-01-01	C#759651-01-01	C#759651-01-01		
	<b>UNITS</b>	<b>25-AR-1-S1</b>	<b>25-AR-1-S2</b>	<b>25-AR-1-S3</b>	<b>25-AR-1-S4</b>	<b>25-AR-1-S5</b>	<b>RDL</b>	<b>QC Batch</b>
<b>Ext. Pet. Hydrocarbon</b>								
F2 (C10-C16 Hydrocarbons)	mg/kg	<10	<10	<10	<10	<10	10	C020749
F3 (C16-C34 Hydrocarbons)	mg/kg	<50	<50	<50	<50	<50	50	C020749
F4 (C34-C50 Hydrocarbons)	mg/kg	<50	<50	<50	<50	<50	50	C020749
Reached Baseline at C50	mg/kg	Yes	Yes	Yes	Yes	Yes		C020749
<b>Surrogate Recovery (%)</b>								
O-TERPHENYL (sur.)	%	98	98	102	101	107		C020749
RDL = Reportable Detection Limit								



BUREAU  
VERITAS

Bureau Veritas Job #: C562373  
Report Date: 2025/07/23

AUSENCO SUSTAINABILITY ULC  
Client Project #: 107431-02  
Site Location: STORM CAMP  
Sampler Initials: GS

### PHYSICAL TESTING (SOIL)

Bureau Veritas ID		DPA477	DPA478	DPA479	DPA480	DPA481		
Sampling Date		2025/07/11 14:38	2025/07/11 14:40	2025/07/11 15:00	2025/07/11 15:05	2025/07/11 15:10		
COC Number		C#759651-01-01	C#759651-01-01	C#759651-01-01	C#759651-01-01	C#759651-01-01		
	<b>UNITS</b>	<b>25-AR-1-S1</b>	<b>25-AR-1-S2</b>	<b>25-AR-1-S3</b>	<b>25-AR-1-S4</b>	<b>25-AR-1-S5</b>	<b>RDL</b>	<b>QC Batch</b>
<b>Physical Properties</b>								
Moisture	%	9.0	20	20	9.4	20	0.30	C020746
RDL = Reportable Detection Limit								



**VOLATILE ORGANICS BY GC-MS (SOIL)**

Bureau Veritas ID		DPA477	DPA478		DPA479	DPA480		
Sampling Date		2025/07/11 14:38	2025/07/11 14:40		2025/07/11 15:00	2025/07/11 15:05		
COC Number		C#759651-01-01	C#759651-01-01		C#759651-01-01	C#759651-01-01		
	<b>UNITS</b>	<b>25-AR-1-S1</b>	<b>25-AR-1-S2</b>	<b>QC Batch</b>	<b>25-AR-1-S3</b>	<b>25-AR-1-S4</b>	<b>RDL</b>	<b>QC Batch</b>

<b>Volatiles</b>								
Benzene	mg/kg	<0.0050	<0.0050	C020709	<0.0050	<0.0050	0.0050	C020709
Bromodichloromethane	mg/kg	<0.030	<0.030	C020739	<0.030	<0.030	0.030	C020739
Toluene	mg/kg	<0.050	<0.050	C020709	<0.050	<0.050	0.050	C020709
Bromoform	mg/kg	<0.050	<0.050	C020739	<0.050	<0.050	0.050	C020739
Ethylbenzene	mg/kg	<0.010	<0.010	C020709	<0.010	<0.010	0.010	C020709
Bromomethane	mg/kg	<0.020	<0.020	C020739	<0.020	<0.020	0.020	C020739
Carbon tetrachloride	mg/kg	<0.00050	<0.00050	C020739	<0.00050	<0.00050	0.00050	C020739
m & p-Xylene	mg/kg	<0.040	<0.040	C020709	<0.040	<0.040	0.040	C020709
Chlorobenzene	mg/kg	<0.0050	<0.0050	C020739	<0.0050	<0.0050	0.0050	C020739
o-Xylene	mg/kg	<0.020	<0.020	C020709	<0.020	<0.020	0.020	C020709
Dibromochloromethane	mg/kg	<0.020	<0.020	C020739	<0.020	<0.020	0.020	C020739
Xylenes (Total)	mg/kg	<0.045	<0.045	C019776	<0.045	<0.045	0.045	C019793
Chloroethane	mg/kg	<0.020	<0.020	C020739	<0.020	<0.020	0.020	C020739
F1 (C6-C10) - BTEX	mg/kg	<10	<10	C019776	<10	<10	10	C019793
Chloroform	mg/kg	<0.010	<0.010	C020739	<0.010	<0.010	0.010	C020739
F1 (C6-C10)	mg/kg	<10	<10	C020709	<10	<10	10	C020709
Chloromethane	mg/kg	<0.030	<0.030	C020739	<0.030	<0.030	0.030	C020739
1,2-dibromoethane	mg/kg	<0.0020	<0.0020	C020739	<0.0020	<0.0020	0.0020	C020739
1,2-dichlorobenzene	mg/kg	<0.020	<0.020	C020739	<0.020	<0.020	0.020	C020739
1,3-dichlorobenzene	mg/kg	<0.020	<0.020	C020739	<0.020	<0.020	0.020	C020739
1,4-dichlorobenzene	mg/kg	<0.020	<0.020	C020739	<0.020	<0.020	0.020	C020739
1,1-dichloroethane	mg/kg	<0.020	<0.020	C020739	<0.020	<0.020	0.020	C020739
1,2-dichloroethane	mg/kg	<0.0020	<0.0020	C020739	<0.0020	<0.0020	0.0020	C020739
1,1-dichloroethene	mg/kg	<0.020	<0.020	C020739	<0.020	<0.020	0.020	C020739
cis-1,2-dichloroethene	mg/kg	<0.020	<0.020	C020739	<0.020	<0.020	0.020	C020739
trans-1,2-dichloroethene	mg/kg	<0.020	<0.020	C020739	<0.020	<0.020	0.020	C020739
Dichloromethane	mg/kg	<0.030	<0.030	C020739	<0.030	<0.030	0.030	C020739
1,2-dichloropropane	mg/kg	<0.020	<0.020	C020739	<0.020	<0.020	0.020	C020739
cis-1,3-dichloropropene	mg/kg	<0.020	<0.020	C020739	<0.020	<0.020	0.020	C020739
trans-1,3-dichloropropene	mg/kg	<0.020	<0.020	C020739	<0.020	<0.020	0.020	C020739
Methyl methacrylate	mg/kg	<0.040	<0.040	C020739	<0.040	<0.040	0.040	C020739

RDL = Reportable Detection Limit



**VOLATILE ORGANICS BY GC-MS (SOIL)**

Bureau Veritas ID		DPA477	DPA478		DPA479	DPA480		
Sampling Date		2025/07/11 14:38	2025/07/11 14:40		2025/07/11 15:00	2025/07/11 15:05		
COC Number		C#759651-01-01	C#759651-01-01		C#759651-01-01	C#759651-01-01		
	UNITS	25-AR-1-S1	25-AR-1-S2	QC Batch	25-AR-1-S3	25-AR-1-S4	RDL	QC Batch
Methyl-tert-butylether (MTBE)	mg/kg	<0.030	<0.030	C020739	<0.030	<0.030	0.030	C020739
Styrene	mg/kg	<0.020	<0.020	C020739	<0.020	<0.020	0.020	C020739
1,1,1,2-tetrachloroethane	mg/kg	<0.050	<0.050	C020739	<0.050	<0.050	0.050	C020739
1,1,2,2-tetrachloroethane	mg/kg	<0.050	<0.050	C020739	<0.050	<0.050	0.050	C020739
Tetrachloroethene	mg/kg	<0.010	<0.010	C020739	<0.010	<0.010	0.010	C020739
1,2,3-trichlorobenzene	mg/kg	<0.040	<0.040	C020739	<0.040	<0.040	0.040	C020739
1,2,4-trichlorobenzene	mg/kg	<0.040	<0.040	C020739	<0.040	<0.040	0.040	C020739
1,3,5-trichlorobenzene	mg/kg	<0.040	<0.040	C020739	<0.040	<0.040	0.040	C020739
1,1,1-trichloroethane	mg/kg	<0.020	<0.020	C020739	<0.020	<0.020	0.020	C020739
1,1,2-trichloroethane	mg/kg	<0.020	<0.020	C020739	<0.020	<0.020	0.020	C020739
Trichloroethene	mg/kg	<0.0010	<0.0010	C020739	<0.0010	<0.0010	0.0010	C020739
Trichlorofluoromethane	mg/kg	<0.020	<0.020	C020739	<0.020	<0.020	0.020	C020739
1,2,4-trimethylbenzene	mg/kg	<0.50	<0.50	C020739	<0.50	<0.50	0.50	C020739
1,3,5-trimethylbenzene	mg/kg	<0.50	<0.50	C020739	<0.50	<0.50	0.50	C020739
Vinyl chloride	mg/kg	<0.00030	<0.00030	C020739	<0.00030	<0.00030	0.00030	C020739
<b>Surrogate Recovery (%)</b>								
1,4-Difluorobenzene (sur.)	%	99	99	C020709	99	99		C020709
4-Bromofluorobenzene (sur.)	%	103	102	C020709	100	102		C020709
D10-o-Xylene (sur.)	%	132	135	C020709	131	130		C020709
D4-1,2-Dichloroethane (sur.)	%	104	106	C020709	102	103		C020709
1,4-Difluorobenzene (sur.)	%	100	101	C020739	98	100		C020739
4-Bromofluorobenzene (sur.)	%	103	103	C020739	104	103		C020739
D10-o-Xylene (sur.)	%	108	104	C020739	111	105		C020739
D4-1,2-Dichloroethane (sur.)	%	108	104	C020739	102	104		C020739
RDL = Reportable Detection Limit								



**VOLATILE ORGANICS BY GC-MS (SOIL)**

Bureau Veritas ID		DPA481		
Sampling Date		2025/07/11 15:10		
COC Number		C#759651-01-01		
	<b>UNITS</b>	<b>25-AR-1-S5</b>	<b>RDL</b>	<b>QC Batch</b>
<b>Volatiles</b>				
Benzene	mg/kg	<0.0050	0.0050	C020709
Bromodichloromethane	mg/kg	<0.030	0.030	C020739
Toluene	mg/kg	<0.050	0.050	C020709
Bromoform	mg/kg	<0.050	0.050	C020739
Ethylbenzene	mg/kg	<0.010	0.010	C020709
Bromomethane	mg/kg	<0.020	0.020	C020739
Carbon tetrachloride	mg/kg	<0.00050	0.00050	C020739
m & p-Xylene	mg/kg	<0.040	0.040	C020709
Chlorobenzene	mg/kg	<0.0050	0.0050	C020739
o-Xylene	mg/kg	<0.020	0.020	C020709
Dibromochloromethane	mg/kg	<0.020	0.020	C020739
Xylenes (Total)	mg/kg	<0.045	0.045	C019793
Chloroethane	mg/kg	<0.020	0.020	C020739
F1 (C6-C10) - BTEX	mg/kg	<10	10	C019793
Chloroform	mg/kg	<0.010	0.010	C020739
F1 (C6-C10)	mg/kg	<10	10	C020709
Chloromethane	mg/kg	<0.030	0.030	C020739
1,2-dibromoethane	mg/kg	<0.0020	0.0020	C020739
1,2-dichlorobenzene	mg/kg	<0.020	0.020	C020739
1,3-dichlorobenzene	mg/kg	<0.020	0.020	C020739
1,4-dichlorobenzene	mg/kg	<0.020	0.020	C020739
1,1-dichloroethane	mg/kg	<0.020	0.020	C020739
1,2-dichloroethane	mg/kg	<0.0020	0.0020	C020739
1,1-dichloroethene	mg/kg	<0.020	0.020	C020739
cis-1,2-dichloroethene	mg/kg	<0.020	0.020	C020739
trans-1,2-dichloroethene	mg/kg	<0.020	0.020	C020739
Dichloromethane	mg/kg	<0.030	0.030	C020739
1,2-dichloropropane	mg/kg	<0.020	0.020	C020739
cis-1,3-dichloropropene	mg/kg	<0.020	0.020	C020739
trans-1,3-dichloropropene	mg/kg	<0.020	0.020	C020739
Methyl methacrylate	mg/kg	<0.040	0.040	C020739
RDL = Reportable Detection Limit				



**VOLATILE ORGANICS BY GC-MS (SOIL)**

Bureau Veritas ID		DPA481		
Sampling Date		2025/07/11 15:10		
COC Number		C#759651-01-01		
	<b>UNITS</b>	<b>25-AR-1-S5</b>	<b>RDL</b>	<b>QC Batch</b>
Methyl-tert-butylether (MTBE)	mg/kg	<0.030	0.030	C020739
Styrene	mg/kg	<0.020	0.020	C020739
1,1,1,2-tetrachloroethane	mg/kg	<0.050	0.050	C020739
1,1,2,2-tetrachloroethane	mg/kg	<0.050	0.050	C020739
Tetrachloroethene	mg/kg	<0.010	0.010	C020739
1,2,3-trichlorobenzene	mg/kg	<0.040	0.040	C020739
1,2,4-trichlorobenzene	mg/kg	<0.040	0.040	C020739
1,3,5-trichlorobenzene	mg/kg	<0.040	0.040	C020739
1,1,1-trichloroethane	mg/kg	<0.020	0.020	C020739
1,1,2-trichloroethane	mg/kg	<0.020	0.020	C020739
Trichloroethene	mg/kg	<0.0010	0.0010	C020739
Trichlorofluoromethane	mg/kg	<0.020	0.020	C020739
1,2,4-trimethylbenzene	mg/kg	<0.50	0.50	C020739
1,3,5-trimethylbenzene	mg/kg	<0.50	0.50	C020739
Vinyl chloride	mg/kg	<0.00030	0.00030	C020739
<b>Surrogate Recovery (%)</b>				
1,4-Difluorobenzene (sur.)	%	100		C020709
4-Bromofluorobenzene (sur.)	%	101		C020709
D10-o-Xylene (sur.)	%	132		C020709
D4-1,2-Dichloroethane (sur.)	%	103		C020709
1,4-Difluorobenzene (sur.)	%	98		C020739
4-Bromofluorobenzene (sur.)	%	102		C020739
D10-o-Xylene (sur.)	%	104		C020739
D4-1,2-Dichloroethane (sur.)	%	106		C020739
RDL = Reportable Detection Limit				



BUREAU  
VERITAS

Bureau Veritas Job #: C562373  
Report Date: 2025/07/23

AUSENCO SUSTAINABILITY ULC  
Client Project #: 107431-02  
Site Location: STORM CAMP  
Sampler Initials: GS

### GENERAL COMMENTS

Sample DPA477 [25-AR-1-S1] : Sample received was not in compliance with CCME sampling requirements for VOC/BTEX/F1 in soil.

Sample DPA478 [25-AR-1-S2] : Sample received was not in compliance with CCME sampling requirements for VOC/BTEX/F1 in soil.

Sample DPA479 [25-AR-1-S3] : Sample received was not in compliance with CCME sampling requirements for VOC/BTEX/F1 in soil.

Sample DPA480 [25-AR-1-S4] : Sample received was not in compliance with CCME sampling requirements for VOC/BTEX/F1 in soil.

Sample DPA481 [25-AR-1-S5] : Sample received was not in compliance with CCME sampling requirements for VOC/BTEX/F1 in soil.

**Results relate only to the items tested.**



BUREAU  
VERITAS

Bureau Veritas Job #: C562373

Report Date: 2025/07/23

### QUALITY ASSURANCE REPORT

AUSENCO SUSTAINABILITY ULC

Client Project #: 107431-02

Site Location: STORM CAMP

Sampler Initials: GS

QC Batch	Parameter	Date	Matrix Spike		Spiked Blank		Method Blank		RPD	
			% Recovery	QC Limits	% Recovery	QC Limits	Value	UNITS	Value (%)	QC Limits
C020709	1,4-Difluorobenzene (sur.)	2025/07/16	98	50 - 140	97	50 - 140	100	%		
C020709	4-Bromofluorobenzene (sur.)	2025/07/16	107	50 - 140	103	50 - 140	102	%		
C020709	D10-o-Xylene (sur.)	2025/07/16	109	50 - 140	106	50 - 140	103	%		
C020709	D4-1,2-Dichloroethane (sur.)	2025/07/16	108	50 - 140	110	50 - 140	113	%		
C020739	1,4-Difluorobenzene (sur.)	2025/07/19	102	50 - 140	104	50 - 140	101	%		
C020739	4-Bromofluorobenzene (sur.)	2025/07/19	105	50 - 140	96	50 - 140	102	%		
C020739	D10-o-Xylene (sur.)	2025/07/19	107	50 - 140	112	50 - 140	107	%		
C020739	D4-1,2-Dichloroethane (sur.)	2025/07/19	99	50 - 140	98	50 - 140	99	%		
C020749	O-TERPHENYL (sur.)	2025/07/19	96	60 - 140	98	60 - 140	105	%		
C020709	Benzene	2025/07/16	93	50 - 140	94	60 - 130	<0.0050	mg/kg	21	50
C020709	Ethylbenzene	2025/07/16	95	50 - 140	95	60 - 130	<0.010	mg/kg	5.7	50
C020709	F1 (C6-C10)	2025/07/16	112	60 - 140	112	60 - 140	<10	mg/kg	NC	40
C020709	m & p-Xylene	2025/07/16	96	50 - 140	97	60 - 130	<0.040	mg/kg	NC	50
C020709	o-Xylene	2025/07/16	91	50 - 140	93	60 - 130	<0.020	mg/kg	NC	50
C020709	Toluene	2025/07/16	92	50 - 140	92	60 - 130	<0.050	mg/kg	NC	50
C020739	1,1,1,2-tetrachloroethane	2025/07/19	94	50 - 140	93	60 - 130	<0.050	mg/kg	NC	50
C020739	1,1,1-trichloroethane	2025/07/19	99	50 - 140	100	60 - 130	<0.020	mg/kg	NC	50
C020739	1,1,2,2-tetrachloroethane	2025/07/19	93	50 - 140	89	60 - 130	<0.050	mg/kg	NC	50
C020739	1,1,2-trichloroethane	2025/07/19	99	50 - 140	98	60 - 130	<0.020	mg/kg	NC	50
C020739	1,1-dichloroethane	2025/07/19	102	50 - 140	99	60 - 130	<0.020	mg/kg	NC	50
C020739	1,1-dichloroethene	2025/07/19	98	50 - 140	103	60 - 130	<0.020	mg/kg	NC	50
C020739	1,2,3-trichlorobenzene	2025/07/19	96	50 - 140	86	60 - 130	<0.040	mg/kg	NC	50
C020739	1,2,4-trichlorobenzene	2025/07/19	93	50 - 140	92	60 - 130	<0.040	mg/kg	NC	50
C020739	1,2,4-trimethylbenzene	2025/07/19	105	50 - 140	99	60 - 130	<0.50	mg/kg	NC	50
C020739	1,2-dibromoethane	2025/07/19	100	50 - 140	99	60 - 130	<0.0020	mg/kg	NC	50
C020739	1,2-dichlorobenzene	2025/07/19	98	50 - 140	93	60 - 130	<0.020	mg/kg	NC	50
C020739	1,2-dichloroethane	2025/07/19	99	50 - 140	97	60 - 130	<0.0020	mg/kg	NC	50
C020739	1,2-dichloropropane	2025/07/19	101	50 - 140	96	60 - 130	<0.020	mg/kg	NC	50
C020739	1,3,5-trichlorobenzene	2025/07/19	96	50 - 140	101	60 - 130	<0.040	mg/kg	NC	50
C020739	1,3,5-trimethylbenzene	2025/07/19	105	50 - 140	98	60 - 130	<0.50	mg/kg	NC	50
C020739	1,3-dichlorobenzene	2025/07/19	99	50 - 140	98	60 - 130	<0.020	mg/kg	NC	50
C020739	1,4-dichlorobenzene	2025/07/19	96	50 - 140	96	60 - 130	<0.020	mg/kg	NC	50



BUREAU  
VERITAS

Bureau Veritas Job #: C562373

Report Date: 2025/07/23

### QUALITY ASSURANCE REPORT(CONT'D)

AUSENCO SUSTAINABILITY ULC

Client Project #: 107431-02

Site Location: STORM CAMP

Sampler Initials: GS

QC Batch	Parameter	Date	Matrix Spike		Spiked Blank		Method Blank		RPD	
			% Recovery	QC Limits	% Recovery	QC Limits	Value	UNITS	Value (%)	QC Limits
C020739	Bromodichloromethane	2025/07/19	104	50 - 140	102	60 - 130	<0.030	mg/kg	NC	50
C020739	Bromoform	2025/07/19	95	50 - 140	98	60 - 130	<0.050	mg/kg	NC	50
C020739	Bromomethane	2025/07/19	96	50 - 140	115	60 - 130	<0.020	mg/kg	NC	50
C020739	Carbon tetrachloride	2025/07/19	98	50 - 140	101	60 - 130	<0.00050	mg/kg	NC	50
C020739	Chlorobenzene	2025/07/19	96	50 - 140	98	60 - 130	<0.0050	mg/kg	NC	50
C020739	Chloroethane	2025/07/19	110	50 - 140	120	60 - 130	<0.020	mg/kg	NC	50
C020739	Chloroform	2025/07/19	99	50 - 140	98	60 - 130	<0.010	mg/kg	NC	50
C020739	Chloromethane	2025/07/19	102	50 - 140	109	60 - 130	<0.030	mg/kg	NC	50
C020739	cis-1,2-dichloroethene	2025/07/19	98	50 - 140	99	60 - 130	<0.020	mg/kg	NC	50
C020739	cis-1,3-dichloropropene	2025/07/19	104	50 - 140	129	60 - 130	<0.020	mg/kg	NC	50
C020739	Dibromochloromethane	2025/07/19	98	50 - 140	98	60 - 130	<0.020	mg/kg	NC	50
C020739	Dichloromethane	2025/07/19	91	50 - 140	93	60 - 130	<0.030	mg/kg	NC	50
C020739	Methyl methacrylate	2025/07/19	109	50 - 140	102	60 - 130	<0.040	mg/kg	NC	50
C020739	Methyl-tert-butylether (MTBE)	2025/07/19	99	50 - 140	94	60 - 130	<0.030	mg/kg	NC	50
C020739	Styrene	2025/07/19	96	50 - 140	99	60 - 130	<0.020	mg/kg	NC	50
C020739	Tetrachloroethene	2025/07/19	90	50 - 140	101	60 - 130	<0.010	mg/kg	NC	50
C020739	trans-1,2-dichloroethene	2025/07/19	95	50 - 140	106	60 - 130	<0.020	mg/kg	NC	50
C020739	trans-1,3-dichloropropene	2025/07/19	106	50 - 140	137 (1)	60 - 130	<0.020	mg/kg	NC	50
C020739	Trichloroethene	2025/07/19	96	50 - 140	104	60 - 130	<0.0010	mg/kg	NC	50
C020739	Trichlorofluoromethane	2025/07/19	94	50 - 140	103	60 - 130	<0.020	mg/kg	NC	50
C020739	Vinyl chloride	2025/07/19	92	50 - 140	98	60 - 130	<0.00030	mg/kg	NC	50
C020746	Moisture	2025/07/17					<0.30	%	0.93	20
C020749	F2 (C10-C16 Hydrocarbons)	2025/07/19	89	60 - 140	92	60 - 140	<10	mg/kg	NC	40
C020749	F3 (C16-C34 Hydrocarbons)	2025/07/19	89	60 - 140	95	60 - 140	<50	mg/kg	26	40



BUREAU  
VERITAS

Bureau Veritas Job #: C562373

Report Date: 2025/07/23

### QUALITY ASSURANCE REPORT(CONT'D)

AUSENCO SUSTAINABILITY ULC

Client Project #: 107431-02

Site Location: STORM CAMP

Sampler Initials: GS

QC Batch	Parameter	Date	Matrix Spike		Spiked Blank		Method Blank		RPD	
			% Recovery	QC Limits	% Recovery	QC Limits	Value	UNITS	Value (%)	QC Limits
C020749	F4 (C34-C50 Hydrocarbons)	2025/07/19	86	60 - 140	90	60 - 140	<50	mg/kg	NC	40
<p>Duplicate: Paired analysis of a separate portion of the same sample. Used to evaluate the variance in the measurement.</p> <p>Matrix Spike: A sample to which a known amount of the analyte of interest has been added. Used to evaluate sample matrix interference.</p> <p>Spiked Blank: A blank matrix sample to which a known amount of the analyte, usually from a second source, has been added. Used to evaluate method accuracy.</p> <p>Method Blank: A blank matrix containing all reagents used in the analytical procedure. Used to identify laboratory contamination.</p> <p>Surrogate: A pure or isotopically labeled compound whose behavior mirrors the analytes of interest. Used to evaluate extraction efficiency.</p> <p>NC (Duplicate RPD): The duplicate RPD was not calculated. The concentration in the sample and/or duplicate was too low to permit a reliable RPD calculation (absolute difference &lt;= 2x RDL).</p> <p>(1) Recovery or RPD for this parameter is outside control limits. The overall quality control for this analysis meets acceptability criteria.</p>										



### VALIDATION SIGNATURE PAGE

The analytical data and all QC contained in this report were reviewed and validated by:

---

Janet Gao, B.Sc., QP, Supervisor, Organics

---

Jared Wiseman, B.Sc., P.Chem., QP, Senior Analyst, Organics

---

Rahul Suryawanshi, Senior Analyst

---

Veronica Falk, B.Sc., P.Chem., QP, Scientific Specialist, Organics

---

Bureau Veritas has procedures in place to guard against improper use of the electronic signature and have the required "signatories", as per ISO/IEC 17025, signing the reports. For Service Group specific validation, please refer to the Validation Signatures page if included, otherwise available by request. For Department specific Analyst/Supervisor validation names, please refer to the Test Summary section if included, otherwise available by request. This report is authorized by Scott Cantwell, General Manager responsible for Alberta Environmental laboratory operations.

C562373  
2025/07/15 15:10



Bureau Veritas  
4000 19th N.E. Calgary, Alberta Canada T2E 6P8 Tel: (403) 291-3077 Toll-free: 800-563-6266 Fax: (403) 291-9468 www.bvna.com

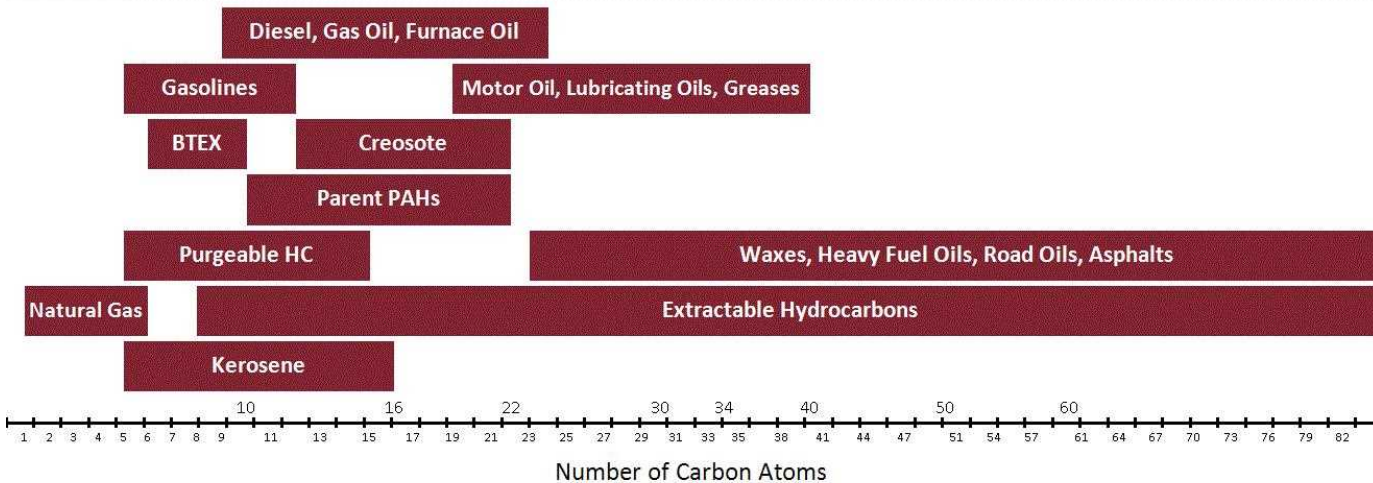
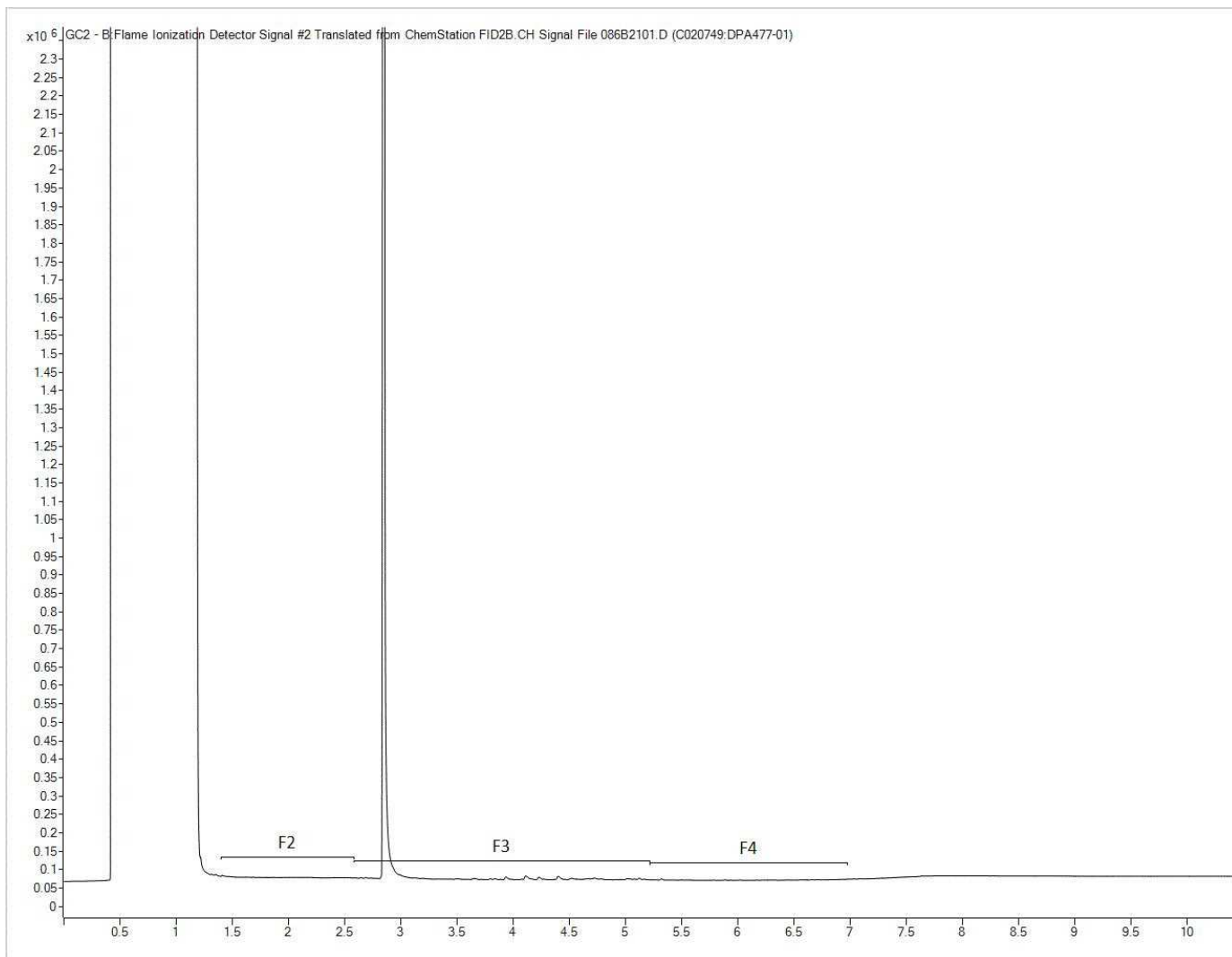
Chain Of Custody Record

INVOICE TO:		Report Information				Project Information				Laboratory Use Only	
Company Name	#11532 AUSENCO SUSTAINABILITY ULC	Company Name				Quotation #	C41504			Bureau Veritas Job #	Bottle Order #:
Contact Name	Accounts Payable	Contact Name	Jess Newman			P.O. #				759651	759651
Address	18th Floor, 4730 Kingsway Burnaby BC V5H 0C6	Address				Project #	167431-02				
Phone	(604) 669-0424 Ext: 224 Fax: (604) 669-0430	Phone				Project Name	Storm camp			Chain Of Custody Record	Project Manager
Email	procure2pay.na@ausenco.com	Email	jess.newman@ausenco.com			Site #				C#759651-01-01	Danielle Boisvert
Regulatory Criteria		Special Instructions		Analysis Requested		Turnaround Time (TAT) Required		Please provide advance notice for rush projects			
Regulated Drinking Water? (Y/N)		Metals Field Filtered? (Y/N)		AT1 BTEX and F1-F4 in Soil		VOCs in Soil by HS GC/MS (Std List)		Regular (Standard) TAT		<input checked="" type="checkbox"/>	
Note: For regulated drinking water samples - please use the Drinking Water Chain of Custody Form								Date Required: _____ Time Required: _____			
Samples must be kept cool (< 10°C) from time of sampling until delivery to Bureau Veritas								Job Specific Rush TAT (if applies to entire submission)			
Sample Barcode Label	Sample (Location) Identification	Date Sampled	Time Sampled	Matrix	Regulated Drinking Water? (Y/N)	Metals Field Filtered? (Y/N)	AT1 BTEX and F1-F4 in Soil	VOCs in Soil by HS GC/MS (Std List)	# of Bottles	Comments	
1	25-AR-1-S1	25-07-11	14:38	Soil	/	/	X	X	2		
2	25-AR-1-S2	↓	14:40	↓	/	/	X	X	2		
3	25-AR-1-S3	↓	15:00	↓	/	/	X	X	2		
4	25-AR-1-S4	↓	15:05	↓	/	/	X	X	2		
5	25-AR-1-S5	↓	15:10	↓	/	/	X	X	2		
6											
7										Received in Yellowknife	
8										By: <u>J. Newman</u> 09:15	
9										JUL 14 2025	
10										Temp: <u>5/5/6</u> CS: <u>yes</u> Ice: <u>yes</u>	
RELINQUISHED BY: (Signature/Print)		Date: (YY/MM/DD)	Time	RECEIVED BY: (Signature/Print)		Date: (YY/MM/DD)	Time	# jars used and not submitted	Lab Use Only		
<u>George Sun</u>				<u>Charles KALONG</u>		25/07/15	15:10		Time Sensitive	Temperature (°C) on Receipt	Custody Seal Intact on Cooler?
									<input type="checkbox"/>	2 2 2	<input checked="" type="checkbox"/> Yes <input type="checkbox"/> No
* UNLESS OTHERWISE AGREED TO IN WRITING, WORK SUBMITTED ON THIS CHAIN OF CUSTODY IS SUBJECT TO BUREAU VERITAS'S STANDARD TERMS AND CONDITIONS. SIGNING OF THIS CHAIN OF CUSTODY DOCUMENT IS ACKNOWLEDGEMENT OF THE RELINQUISHER'S RESPONSIBILITY TO ENSURE THE ACCURACY OF THE CHAIN OF CUSTODY RECORD. AN INCOMPLETE CHAIN OF CUSTODY MAY RESULT IN ANALYTICAL TAT DELAYS.										White: Bureau Veritas Yellow: Client <u>245:285</u>	



MCAL-2025-07-1107

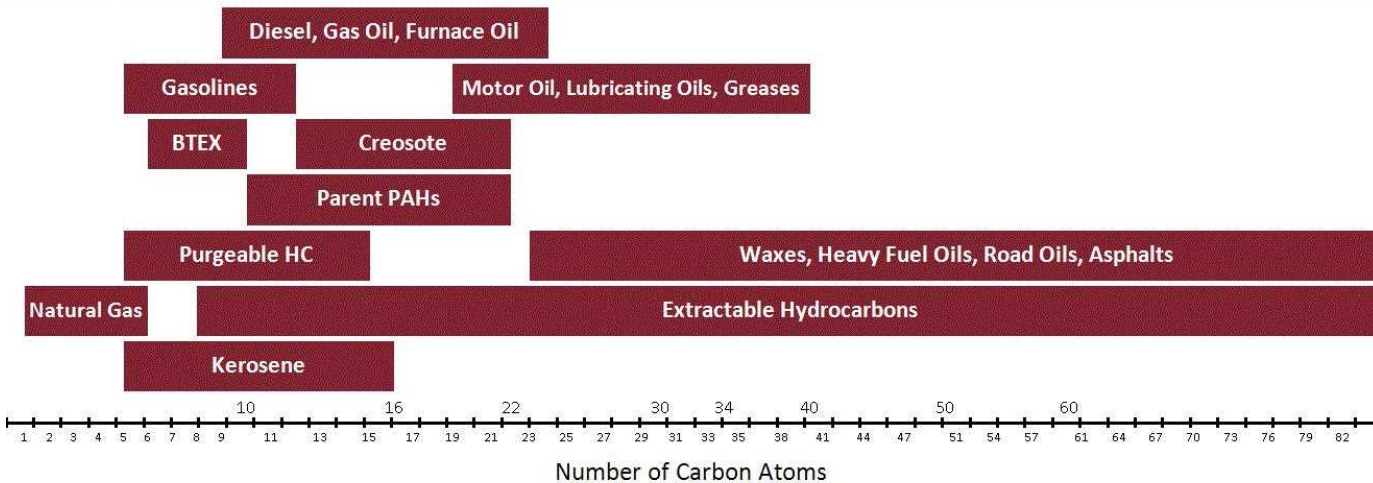
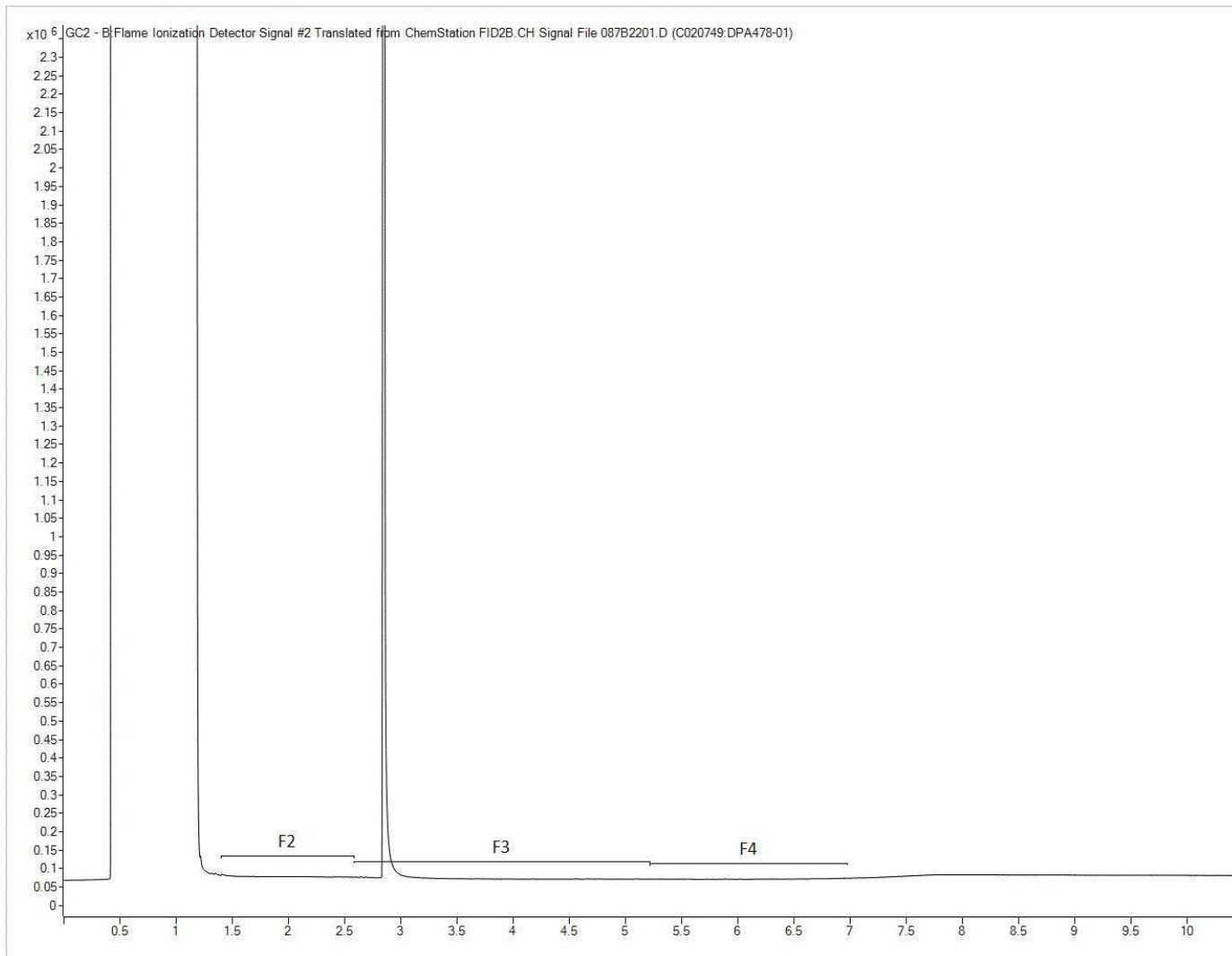
**CCME Hydrocarbons (F2-F4 in soil) Chromatogram**



**Note: This information is provided for reference purposes only. Should detailed chemist interpretation or fingerprinting be required, please contact the laboratory.**

hpchem7\HPchem\1\DATA\2025\07\RUN0719

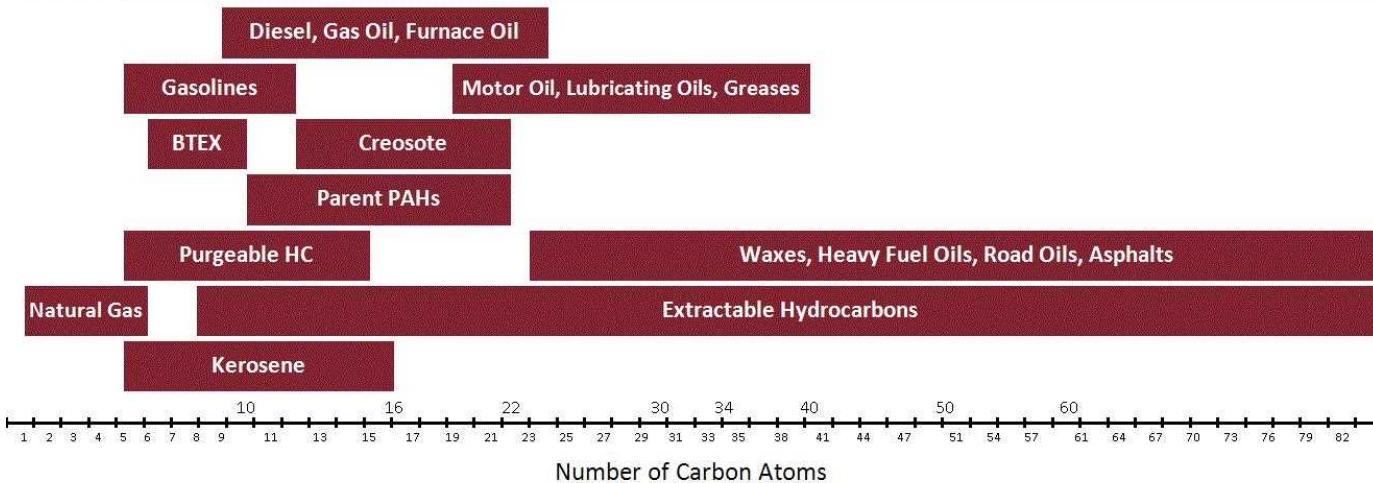
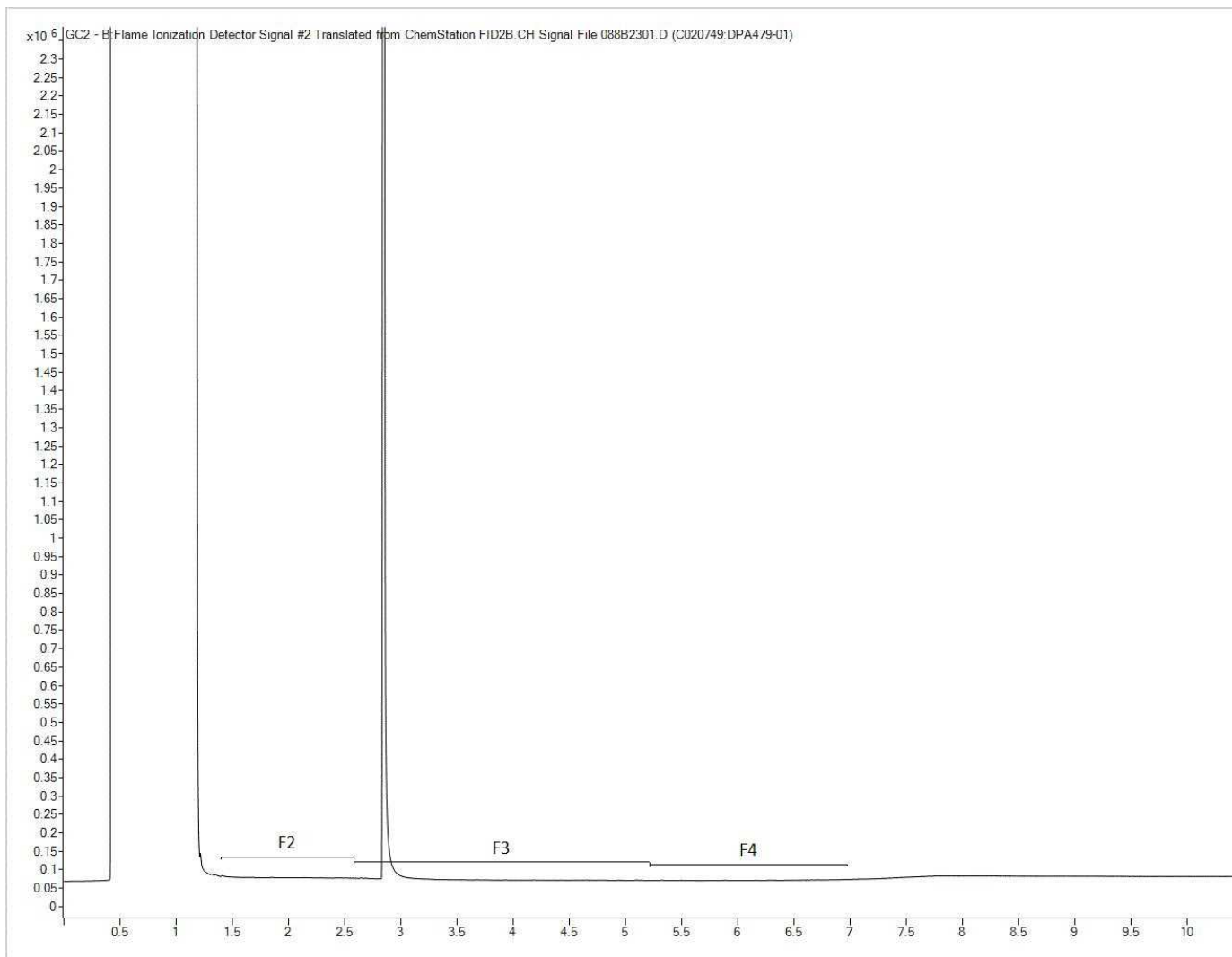
**CCME Hydrocarbons (F2-F4 in soil) Chromatogram**



**Note: This information is provided for reference purposes only. Should detailed chemist interpretation or fingerprinting be required, please contact the laboratory.**

hpchem7\HPchem\1\DATA\2025\07\RUN0719

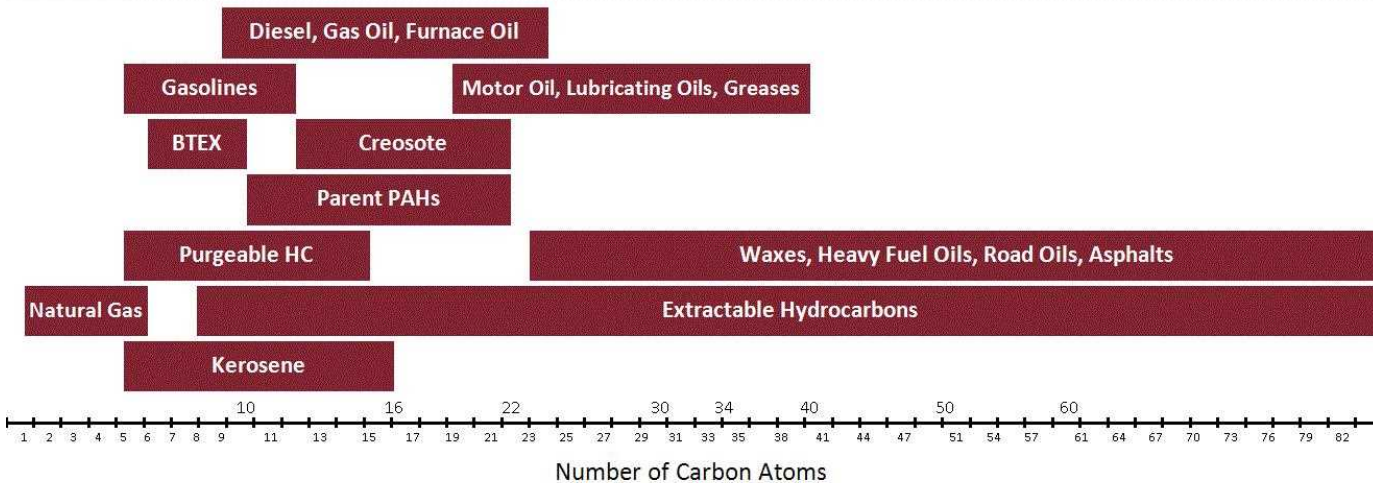
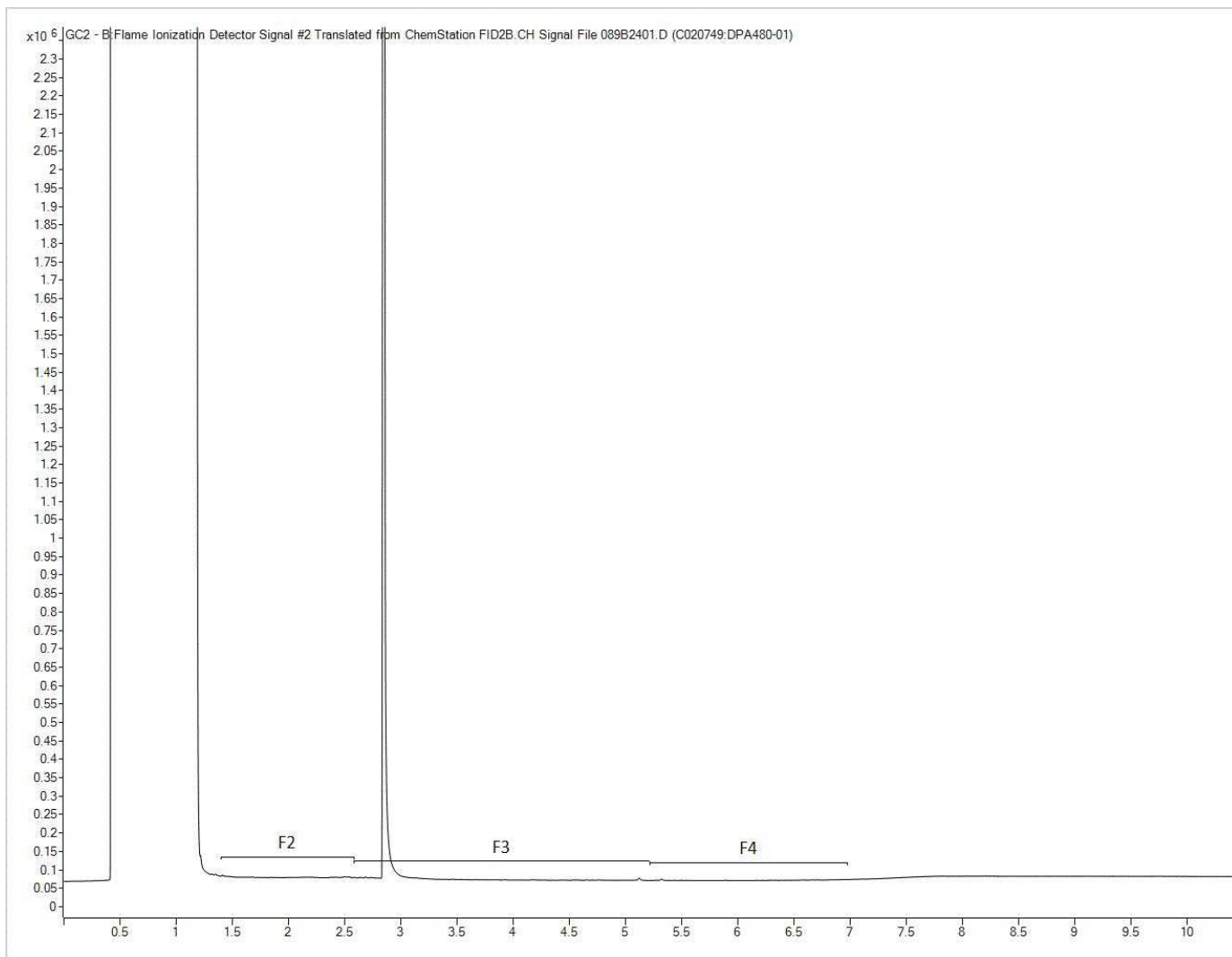
**CCME Hydrocarbons (F2-F4 in soil) Chromatogram**



**Note: This information is provided for reference purposes only. Should detailed chemist interpretation or fingerprinting be required, please contact the laboratory.**

hpchem7\HPchem\1\DATA\2025\07\RUN0719

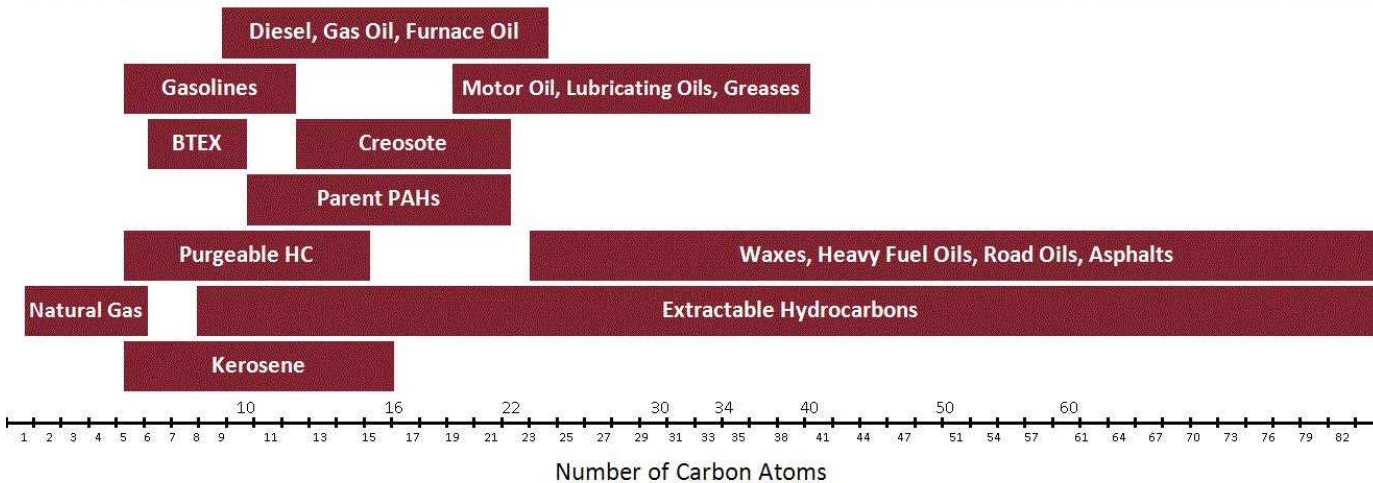
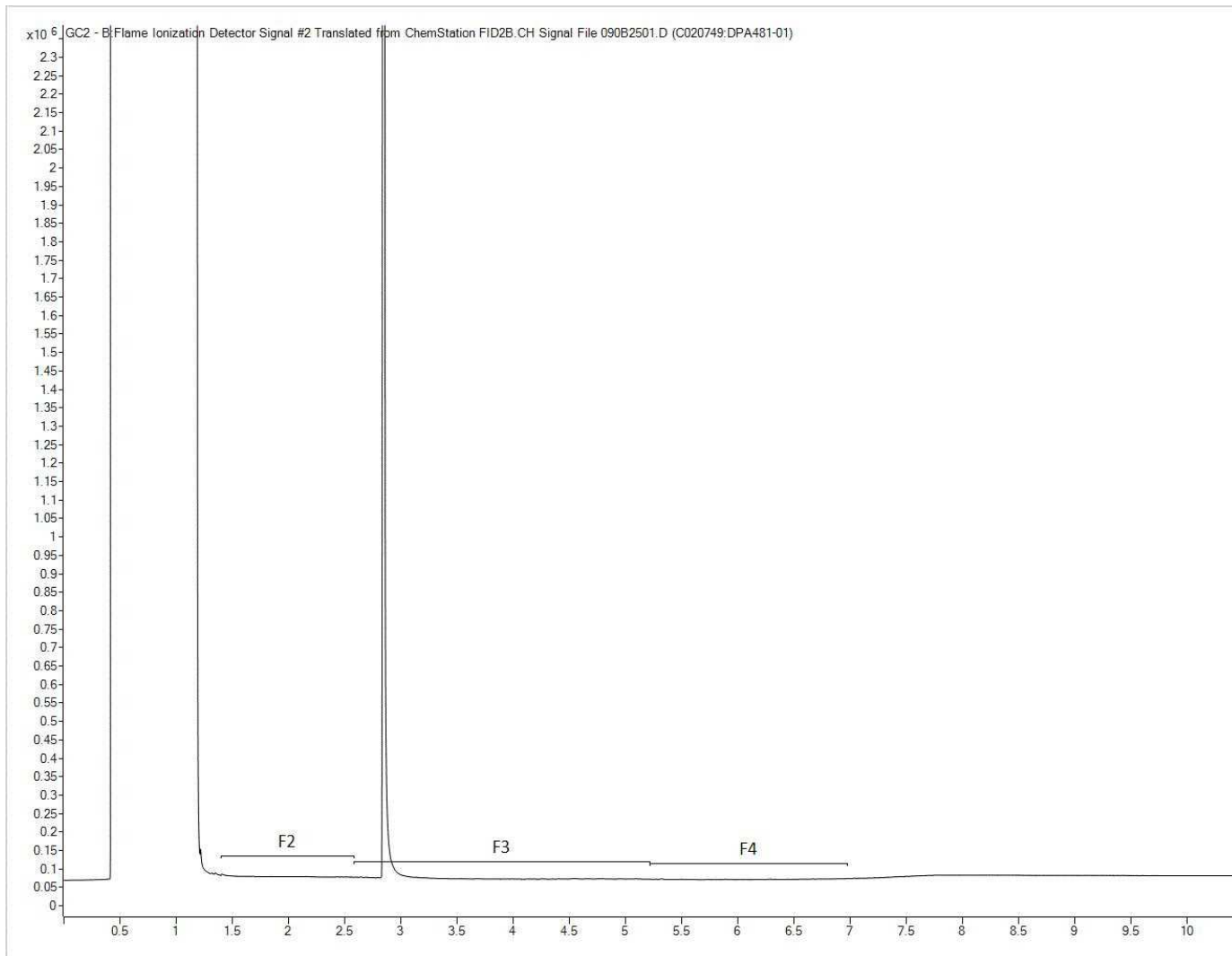
**CCME Hydrocarbons (F2-F4 in soil) Chromatogram**



hpchem7\HPchem\1\DATA\2025\07\RUN0719

**Note: This information is provided for reference purposes only. Should detailed chemist interpretation or fingerprinting be required, please contact the laboratory.**

**CCME Hydrocarbons (F2-F4 in soil) Chromatogram**



hpchem7\HPchem\1\DATA\2025\07\RUN0719

**Note: This information is provided for reference purposes only. Should detailed chemist interpretation or fingerprinting be required, please contact the laboratory.**