



Vancouver Exploration Office
#7-68 Schooner St
Coquitlam BC V3K 7B1

Abandonment and Restoration Plan Tak Camp and the Rockinghorse Property

Submitted with
Water License Application - Nunavut Water Board

August 2007

Table of Contents

Preamble	3
Introduction.....	3
Tak Camp - Site Information	3
Materials Storage	4
Seasonal Camp Shutdown.....	5
Drill Site Shutdown.....	6
Final Abandonment and Restoration	7
Figures.....	8
Appendix.....	13

Preamble

This Abandonment and Restoration Plan (“A&RP”) is effective as of January 1, 2008, and until replaced or revised. This Plan applies to Tak camp and the Rockinghorse property on which the camp is located. The camp supports exploration activities including prospecting, geological mapping, geophysical surveying, diamond drilling, reverse circulation drilling and evaluation/bulk sample drilling. The camp is located at N 66.5915°, W 113.0849°.

Copies and revisions of the A&RP can be obtained from Tahera Diamond Corporations Coquitlam Exploration Office by contacting Ferg McDonnell at (604) 519-1977. The head office for Tahera Diamond Corporation is located at 130 Adelaide St West, Toronto Ontario, M5H 3P5

Figure 1 is a location map for the Tak Property.

Introduction

This A&RP has been prepared for Tak camp, located on the Rockinghorse property. Tak camp is a temporary camp located 160 km southeast of Kugluktuk and 470 km north-northwest of Yellowknife. The camp is capable of housing up to a maximum of 24 occupants, with the average number in camp at approximately 10 persons. The camp is occupied seasonally, usually in the spring and summer months.

Tak camp was built by Kennecott Canada in the late 1990s. Tahera Diamond Corporation took possession of the camp from Kennecott in the summer of 2004. Further camp maintenance and upgrades are anticipated for the life of the camp.

Tahera became the operator of the Rockinghorse property in the summer of 2004 following the signing of a joint venture agreement with Kennecott. Ongoing exploration activities include prospecting, till sampling, mobile metal ion (MMI) sampling, geological mapping, ground geophysical surveying (magnetic, gravity and electromagnetic) and drilling. The drilling on the property involves exploration, delineation and evaluation drilling using diamond drills. Any and all of these exploration activities could be undertaken on the property in future years.

Access to the property and camp is by fixed-wing, float or ski-equipped aircraft. Helicopters and snow-mobiles (seasonally dependant) are used for movement throughout the property.

Tak Camp - Site Information

The following lists all the current structures and equipment at Tak camp. More structures and equipment may be constructed, erected or situated in the camp as it is upgraded and maintained in the future, but any upgrades will have minimal impact. They would most likely include additional tents. Figure 2 shows the layout of the camp.

Wooden Structures

1 kitchen building
1 office building
1 generator shack
1 storage shack
4 sleeping buildings

Weatherhaven Tents

1 eating/recreation tent
dry
pacto latrines
core shack
4 sleeping tents

Materials Storage

MSDS sheets for all substances used in camp and on drill rigs are included in the Appendix. Please refer to the **Spill Contingency Plan – Tak Camp and Rockinhorse Property** for details on spill prevention, containment and remediation.

Tak Camp

Fuel - The types of fuels used and stored at MuskoX camp include: diesel, Jet-B, unleaded gasoline and propane. Diesel is used for running the electrical generator, the heating of structures and for the incineration of waste. Jet-B is used to power helicopters and fixed-wing aircraft. Gasoline is used to power snow-mobiles and small equipment (ice-augers, etc). Diesel, Jet-B and gasoline are stored in 45 gallon drums in impervious fuel berms outside of the camp at a safe distance. Diesel is also stored in camp adjacent to structures for supplying ongoing fuel for heating purposes. Propane fuel is used for cooking and heating in camp and is stored in 100 pound cylinders at a safe distance from camp.

Fuel Type	Maximum quantity of fuel on site
Diesel	50,000 litres
Jet-B	30,000 litres
Gasoline	8,000 litres
Propane	20,000 pounds

Oil - Oil stored on site includes 2-cycle and 4-cycle engine oil used for lubrication in the diesel generators, snow-mobiles and other equipment. The oil is only stored in either the generator shack or storage shack and only in small quantities.

Other Substances - The only other substances stored and used in camp would include non-toxic and biodegradable household cleaning products. These products are stored in very small quantities.

Exploration/Delineation Diamond Drill Sites

The potential exploration and delineation drill sites in the immediate vicinity of the Anuri kimberlite are shown in Figure 3.

Fuel - The types of fuels used and stored at diamond drill sites may include: diesel, Jet-B, and propane. Diesel is used for running the drill rig and heating. If on site, Jet-B is used to power helicopters and fixed-wing aircraft. Diesel and Jet-B are stored in 45 gallon drums in small, impervious fuel berms. Propane fuel is used for heating and is stored in 100 pound cylinders.

Fuel Type	Maximum quantity of fuel on site
Diesel	10000 litres
Jet-B	1000 litres
Propane	1000 pounds

Oil - Oil stored on site includes 2-cycle and 4-cycle engine oil and hydraulic oil. Engine oil is used for lubrication in the drill rig, snow-mobiles and other equipment. Hydraulic oil is used in the drill and related equipment. The oils would be stored in the drill shack, storage shack or equivalent.

Other substances – Ethylene glycol (antifreeze) may be stored with the drill rig as coolant for the engine. If present, it will be stored in small quantities.

Drill Additives - Quik-Gel, Quik-Trol, Poly Drill OBX and 133, Linseed Soap, Special “E” Thread Dope, Big Bear Diamond Drill Rod Grease and 550 X polymer. All these products are non-hazardous.

Seasonal Camp Shutdown

Exploration activities on the Rockinghorse Property are generally run in two yearly time periods. The winter/spring exploration season is usually run between January and May.

The summer exploration season is usually run between July and September. Following the completion of any field program, the camp will be shutdown.

Structures – All wooden buildings and tents will be thoroughly cleaned of all garbage and waste. All the oil stoves and propane systems will be shut off and the supply drums/cylinders will be sealed to prevent leakage and condensation build-up. All doors and windows will be thoroughly secured shut to prevent animals and snow from entering the structures.

Water system – All components of the water system will be thoroughly drained and “winterized” to prevent freezing and damage. The intake pipes will be removed from the lake and stored on site.

Fuel, oil, chemicals and other substances – Any non-empty fuel drums and cylinders will be moved to the fuel storage berm. The drums/cylinders will be thoroughly checked for leaks and will be securely sealed. New fuel bungs are available on site to replace leaking bungs. The fuel from any leaking drums will be pumped into new drums and sealed. The fuel berm will be sealed with tarps to prevent snow from building up inside the berm. Empty fuel drums and cylinders will be returned to Yellowknife for refund/recycling.

The quantity of oil in camp is very small. Any left over oils will be stored in one of the wood framed storage structures.

No hazardous and non-biodegradable chemicals will be stored on the property during shutdown. All such substances, if present, will be removed to Yellowknife.

Generators – Any diesel generators in camp will be shut down according to the manufacturers recommended “winterization” procedures. All fuel hoses and storage tanks will be sealed and inspected for leaks, and any necessary repairs will be made.

Waste – All combustible wastes (including human wastes) will be incinerated. Any non-combustible residue from the incinerator and other bulky waste materials will be shipped to Jericho or Yellowknife for proper disposal.

The greywater sump is equipped with a wooden lid that will be securely sealed during shutdown.

Drill Site Shutdown

It is Tahera policy to restore all drill sites immediately following the completion of drill activities whether or not the drill rig will be left on site.

Drill Equipment – All drill equipment will be broken down and prepared for removal or storage as per the drill contractor’s procedures and under the supervision of Tahera personnel.

Fuel, oil and other substances - Any non-empty fuel drums and cylinders will be moved to the fuel storage berm. The drums/cylinders/bladders will be thoroughly checked for leaks and will be securely sealed. New fuel bungs are available on site to replace leaking bungs. The fuel from any leaking drums will be pumped into new drums and sealed.

Any berm will be sealed with tarps to prevent snow from building up inside the berm. Empty fuel drums and cylinders will be returned to Yellowknife for refund/recycling.

All oil and other substances will be removed from the drill site and either stored in camp or shipped to Jericho or Yellowknife.

Drill Sites - All drill sites will be inspected by the drill contractor and by Tahera for contamination and waste. Any contamination will be cleaned up as outlined in the Spill Contingency Plan. Any remaining waste will either be incinerated in camp or shipped to Jericho Diamond Mine (Jericho) or Yellowknife for proper disposal.

Final Abandonment and Restoration

This section applies to any camps, fuels caches, drill sites or other applicable locations.

- All structures, equipment and facilities on the property will be dismantled and removed from the site.
- Recycling and re-use of camp material is encouraged.
- Wooden structures will be dismantled and burnt in a suitable location. The remaining wood coals and ash will be raked to remove any non-combustible materials (i.e. nails, screws, etc) which will be shipped to Jericho or Yellowknife for disposal. The remaining coals and ash will be buried.
- All sumps and pits will be back-filled after removing and burning any wooden retaining structures.
- All garbage and waste will be incinerated and the remaining non-combustible material will be shipped out for proper disposal.
- All fuel and empty fuel drums/cylinders will be removed from the site and all fuel caches and storage areas will be inspected for contamination. Fuel cache berm liners will be removed and shipped to Jericho or Yellowknife for disposal. Any soil contamination encountered will be handled as outlined in Spill Contingency Plan.
- Drill sites will be shutdown and restored as outlined in the previous section. All drill materials, equipment and supplies will be removed from the site.

Figures

Fig 1

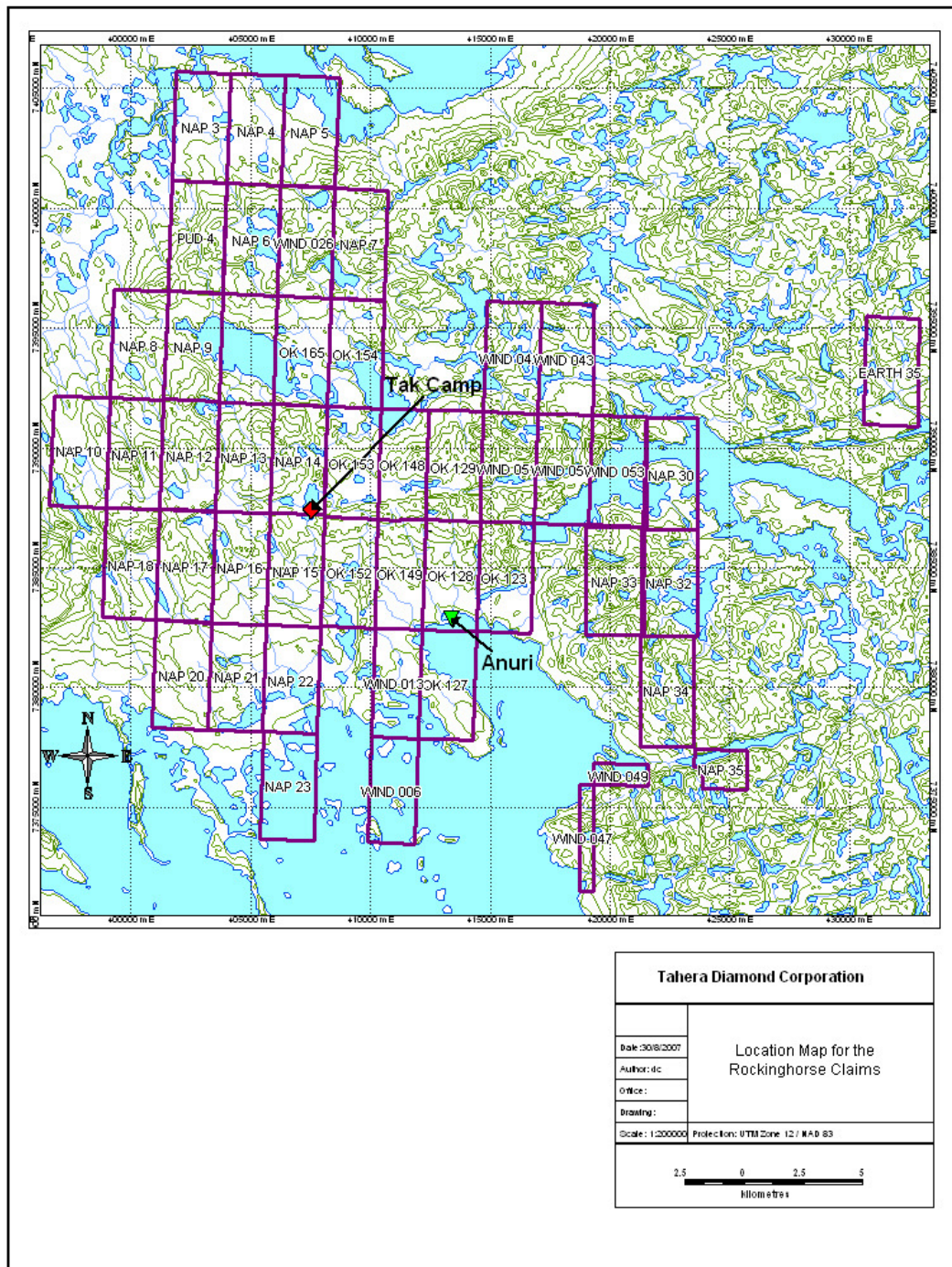


Fig 2

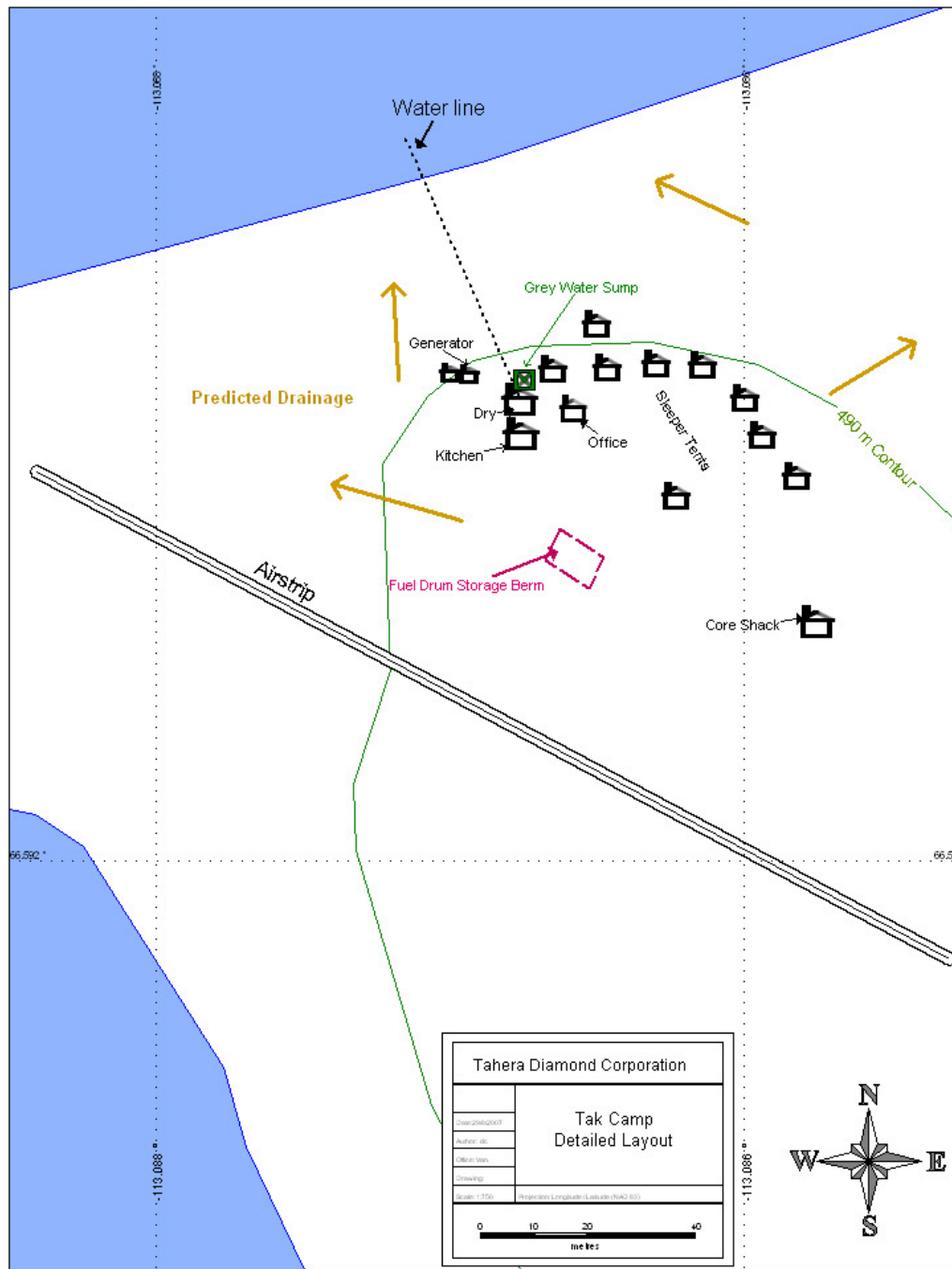
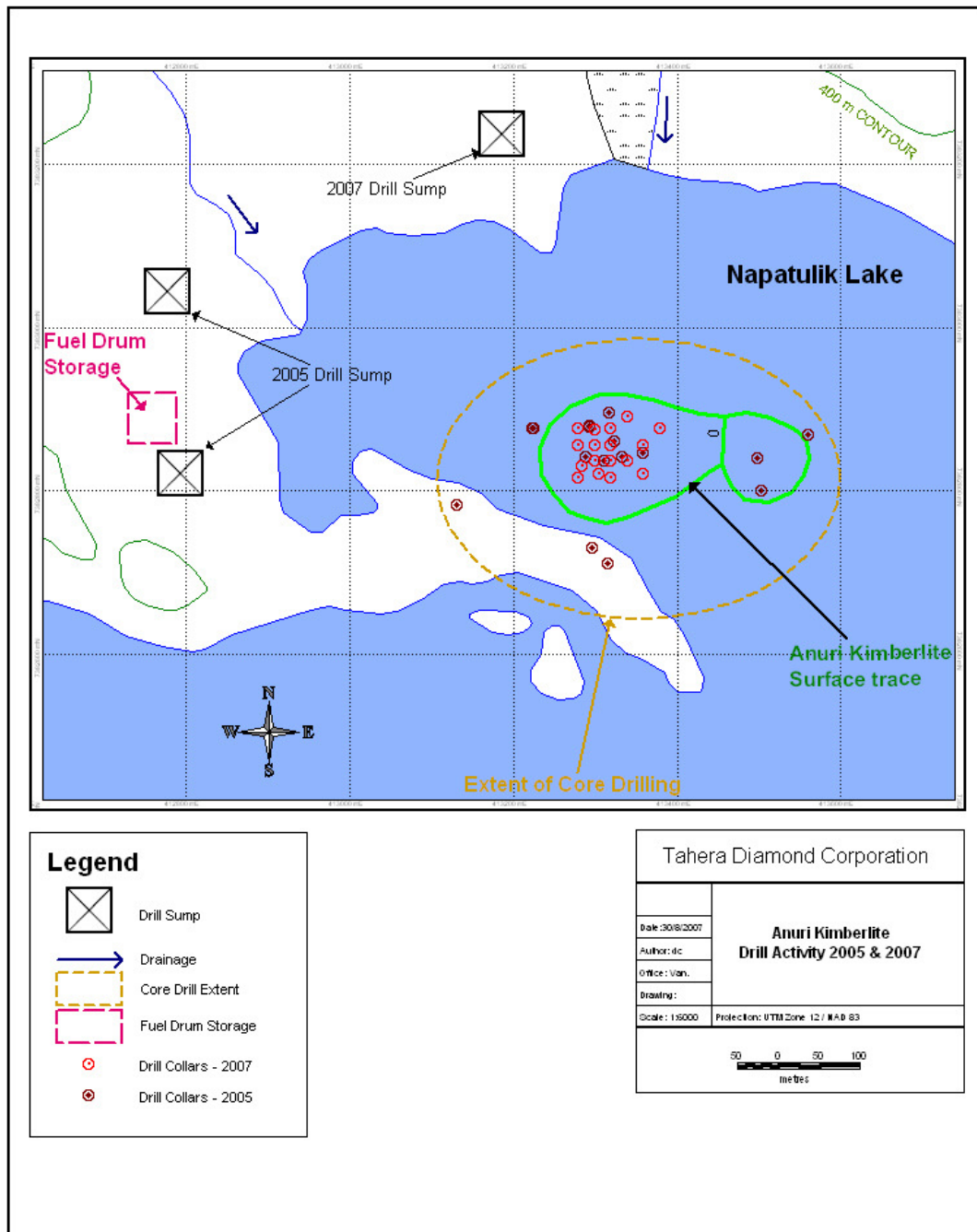


fig 3



Appendix

MSDS

**(MSDS have been submitted separately in this application since they
apply to several documents)**