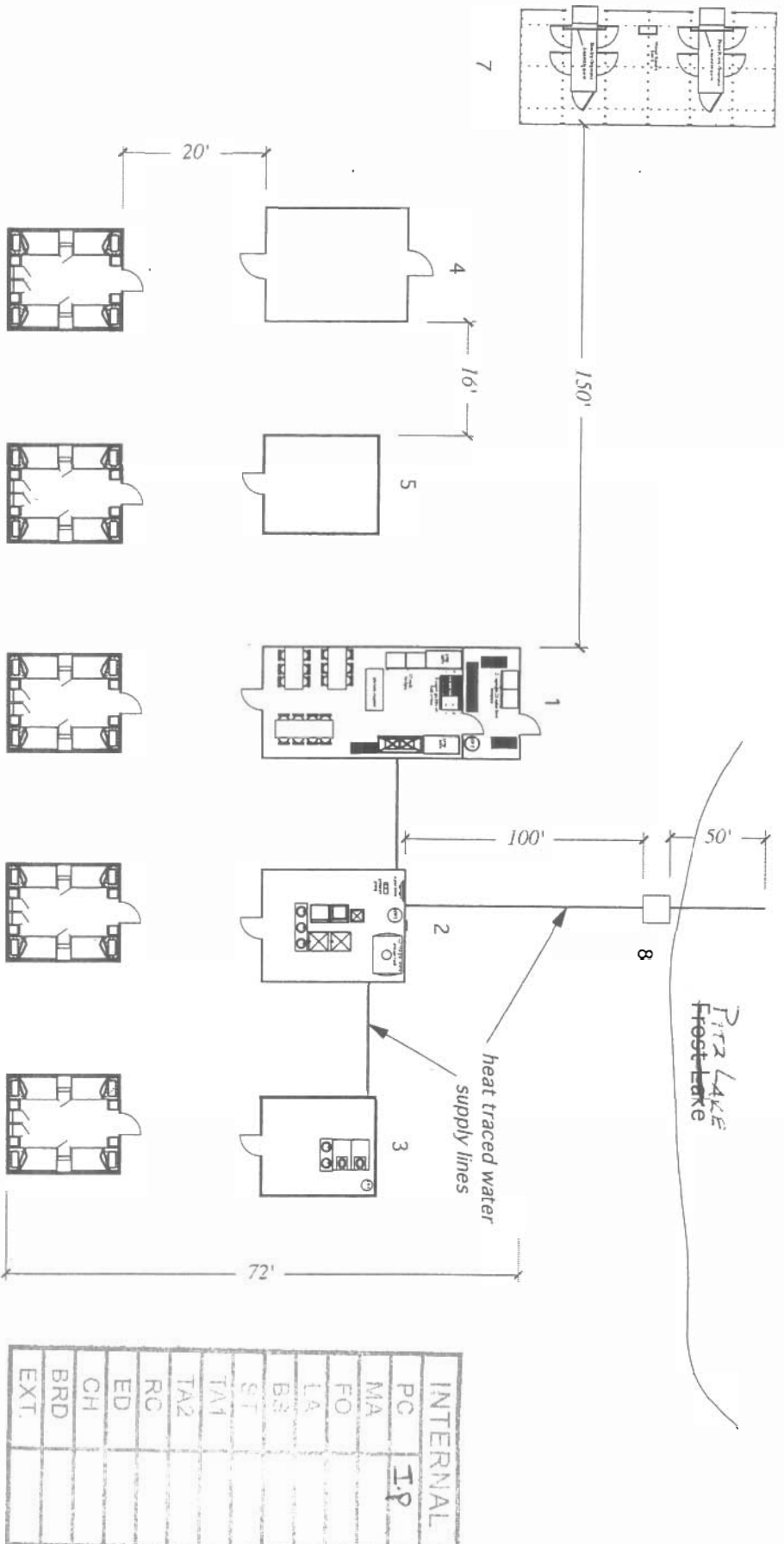


# Kennecott Exploration 20 Person Camp Proposed Site Plan P04-122



LEGEND: 2,576 sq. ft.

1. Kitchen: Weatherhaven 4S Double Insulated 1 - 16' x 36' (KDR-120904\*1056)
2. Shower Shelter: Weatherhaven 4S Double Insulated 1 - 16' x 20' (ABL-120904\*0304)
3. Latrine Shelter: Weatherhaven 4S Double Insulated 1 - 14' x 16' (ABL-121004\*1101)
4. Core Shack: Weatherhaven 4S Double Insulated 1 - 16' x 20' (COR-120904\*0203)
5. Office Module: Weatherhaven 4S Double Insulated 1 - 14' x 16' (OFC-120904\*0243)
6. Four Person Sleeper: Weatherhaven 4S Double Insulated 5 - 14' x 16' (SLR-120904\*0216)
7. Generator Shelter: Weatherhaven 4S Insulated 1 - 16' x 36' (GEN-121004\*1121)
8. Pump House: 1 - 46" x 46" heated wood frame structure

Nunavut Water Board  
MAY 16 2004  
Public Registry

December 13, 2004  
Drawing No. P04-122 Site



## Kitchen Module

### **Structure:**

16' x 36' Weatherhaven 4A double insulated complete with end vents, wind kits and insulated hard doors.

### **Mechanical / Electrical:**

Preharnessed 120/208V 3 phase 60 Hz electrical kit includes; fluorescent lamps, duplex outlets, electric heating (20W/Sq Ft) electric hot water tank, and dual 36" kitchen hoods w/ exhaust.

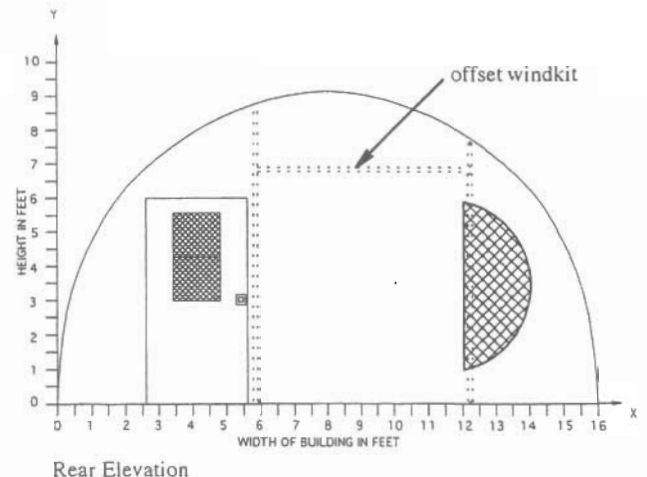
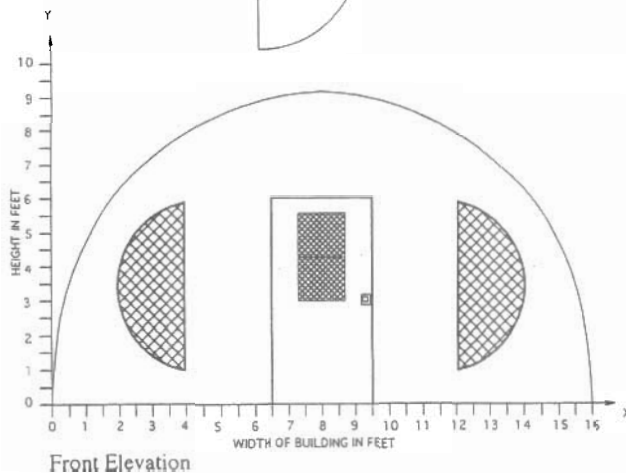
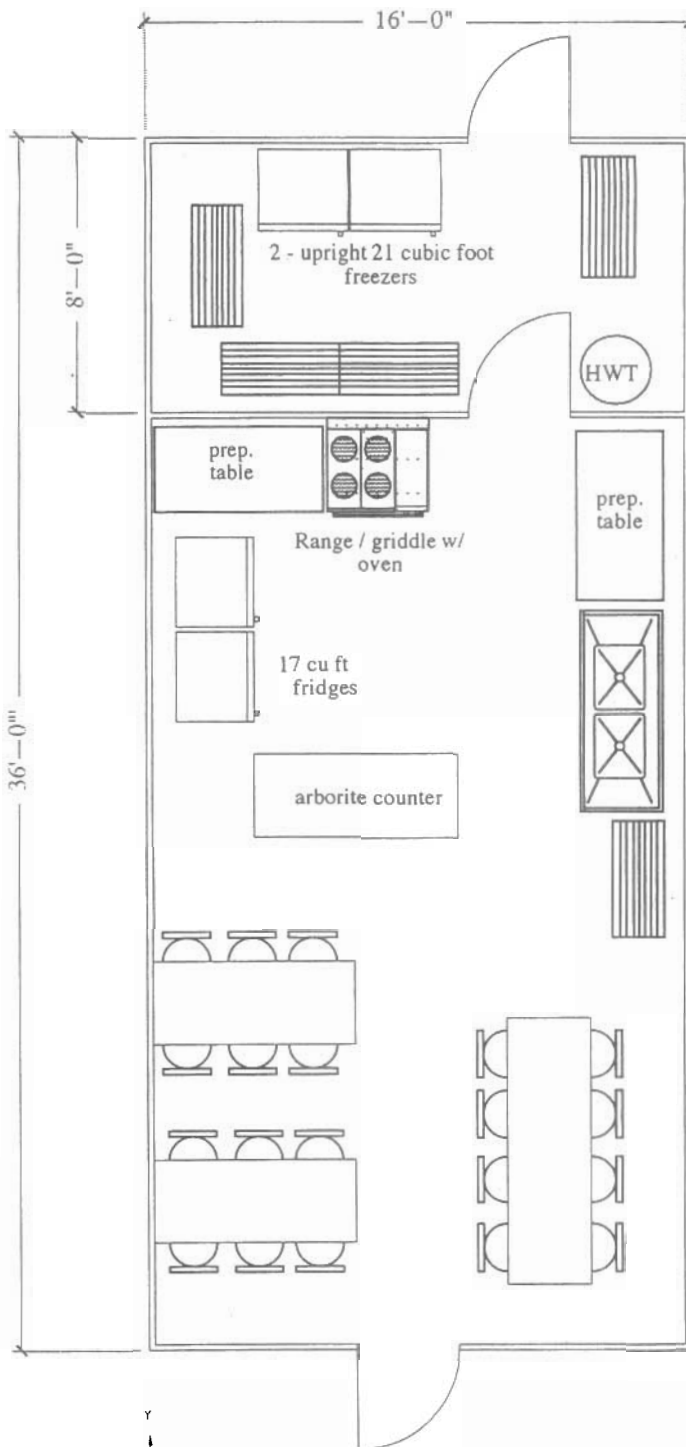
### **Equipment:**

- 3 - folding tables
- 20 - folding chairs
- 1 - electric commercial range w/ griddle
- 1 - double s.s. steel sink with drainboards
- 6 - 3 tier shelving
- 2 - 60" stainless steel food prep table w/ drawers
- 1 - arborite counter with drawers and cupboards
- 2 - 17 Cu Ft fridge
- 2 - 21 Cu Ft upright freezer

### **Floor:**

Weatherhaven "Knock Down" flooring system with 4"x8" built-up beams, 2"x4" joists, 3/4" plywood sheeting, R-20 batt insulation, vinyl flooring and vapour barrier.

NOTE: THIS DRAWING AND THE DESIGN SHOWN ARE THE PROPERTY OF WEATHERHAVEN AND MAY NOT BE REPRODUCED OR SUBMITTED TO THIRD PARTIES WITHOUT ITS EXPRESSED WRITTEN CONSENT.



Drawing No. KDR-120904\*1056.1



## Shower Module

### **Structure:**

16' x 20' Weatherhaven 4A Double Insulated shelter complete with 36" insulated door, wind kit each end.

### **Mechanical/Electrical:**

Pre-harnessed 120/208V 3 phase 60 Hz electrical kit includes fluorescent lamps, electric heating (20W/Sq Ft), duplex outlets and exhaust fan.

Pre-harnessed plumbing package with all interior water and waste water distribution lines to the outside edge of the structure, pressurized and heat traced water supply to Kitchen and latrine Shelter. Water filtration and sterilization also included.

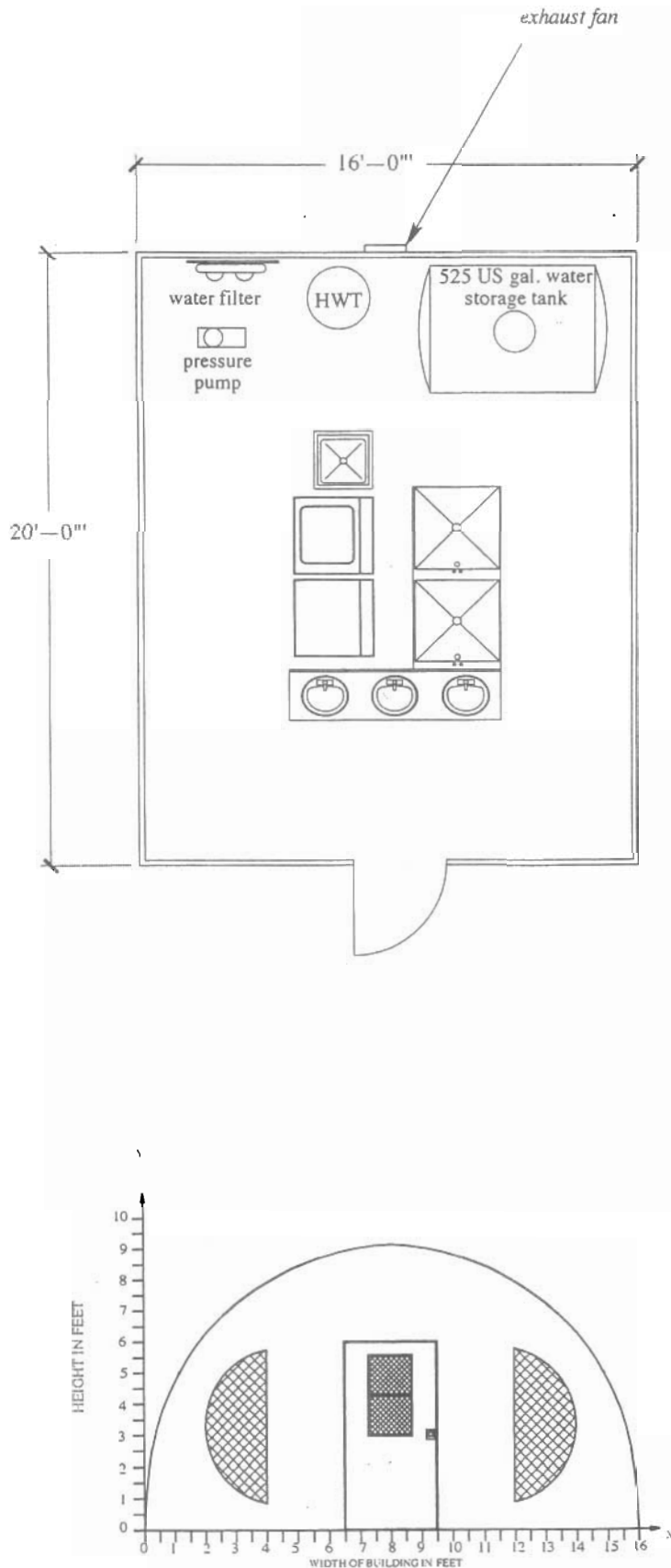
- 1-525 gallon (US) water storage tank
- 1 - 60 gal. hot water tank
- 3- handwash basins in vanity counter
- 5 - soap dishes
- 2- shower cabinets
- 3 - mirrors
- 1 - washing machine
- 1 - dryer
- 1 - janitor sink
- 1-pressure pump

### **Floor:**

Weatherhaven "Knock Down" flooring system with 4"x8" built-up beams, 2"x4" joists, 3/4" plywood sheeting, R-20 batt insulation, vinyl flooring and vapour barrier.

NOTE: THIS DRAWING AND THE DESIGN SHOWN ARE THE PROPERTY OF WEATHERHAVEN AND MAY NOT BE REPRODUCED OR SUBMITTED TO THIRD PARTIES WITHOUT ITS EXPRESSED WRITTEN CONSENT.

Drawing No. ABL-120904\*0304





## Latrine Shelter

### **Structure:**

14' x 16' Weatherhaven 4A Double Insulated complete with end vents, wind kits and 36" insulated door.

### **Electrical / Mechanical:**

Pre-harnessed 120/208V 3 phase 60 Hz electrical kit includes fluorescent lamps, electric heating (20W/Sq Ft), duplex outlets and exhaust fan.

Pre-harnessed plumbing package with all interior water and waste water distribution lines to the outside edge of the structure, pressurized and heat traced water supply from Shower Shelter.

1 - 30 gal. hot water tank

### **Furnishings:**

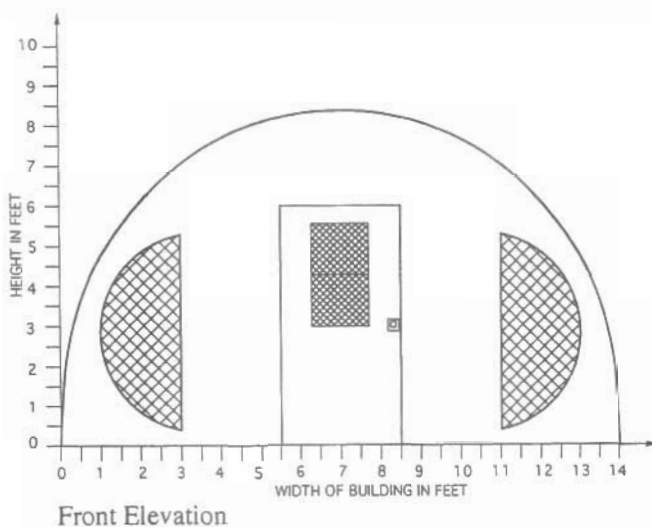
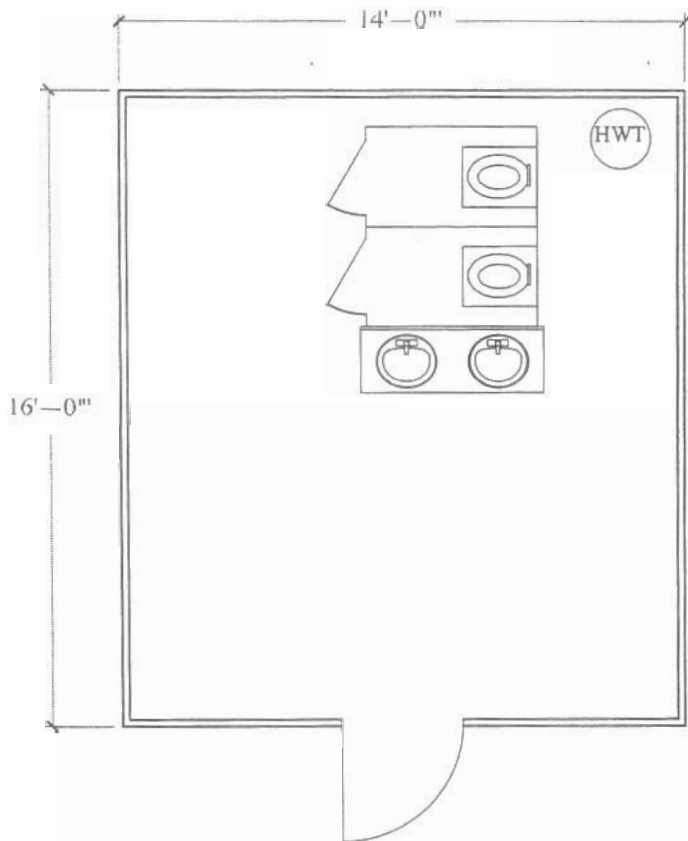
2 - shower cabinets with shower mats  
2 - Pacto "bagger" toilet w/ partition  
2 - handwash basins in vanity counter  
2 - soap dishes

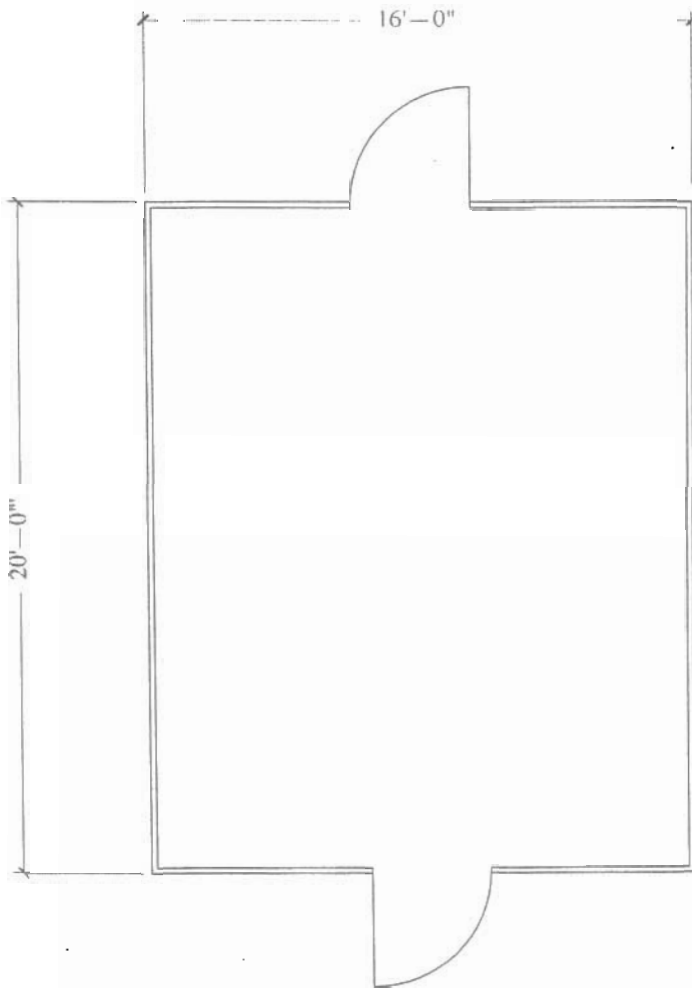
### **Floors:**

Weatherhaven "Knock Down" flooring system with 4"x8" built-up beams, 2"x4" joists, 3/4" plywood sheeting, R-20 batt insulation, vinyl flooring and vapour barrier.

NOTE: THIS DRAWING AND THE DESIGN SHOWN ARE THE PROPERTY OF WEATHERHAVEN AND MAY NOT BE REPRODUCED OR SUBMITTED TO THIRD PARTIES WITHOUT ITS EXPRESSED WRITTEN CONSENT.

Drawing No. ABL-121004\*1101





### Core Shack

#### **Structure:**

16' x 20' Weatherhaven 4A double insulated complete with end vents, wind kits and 42" insulated hard doors.

#### **Mechanical / Electrical:**

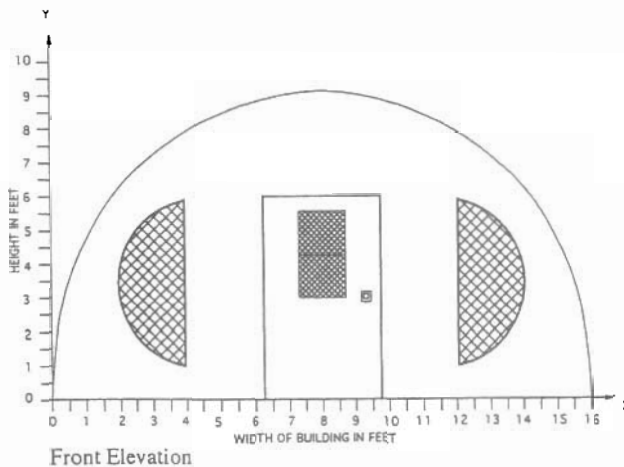
Preharnessed 120/208V 3 phase 60 Hz electrical kit includes fluorescent lamps and duplex outlets.

#### **Equipment:**

By others

#### **Floor:**

Weatherhaven "Knock Down" flooring system with 4"x8" built-up beams, 2"x4" joists, 3/4" plywood sheeting, R-20 batt insulation, vinyl flooring and vapour barrier.



NOTE: THIS DRAWING AND THE DESIGN SHOWN ARE THE PROPERTY OF WEATHERHAVEN AND MAY NOT BE REPRODUCED OR SUBMITTED TO THIRD PARTIES WITHOUT ITS EXPRESSED WRITTEN CONSENT.

Drawing No. COR-120904\*0203



## Office Module

### **Structure:**

14' x 16' Weatherhaven 4A Double Insulated complete with end vents, wind kits and 36" insulated door.

### **Electrical / Mechanical:**

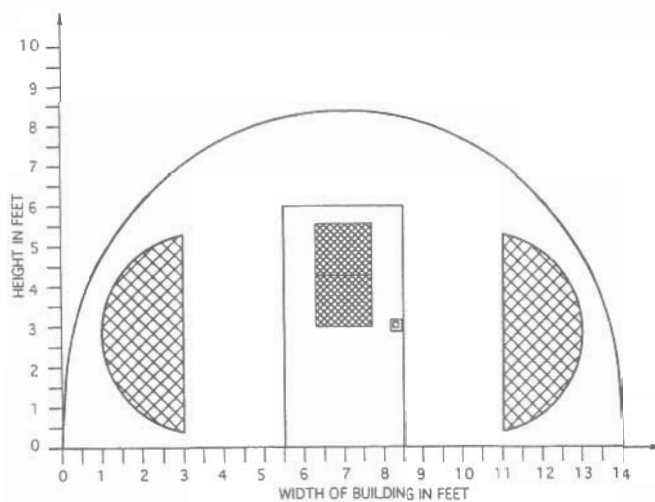
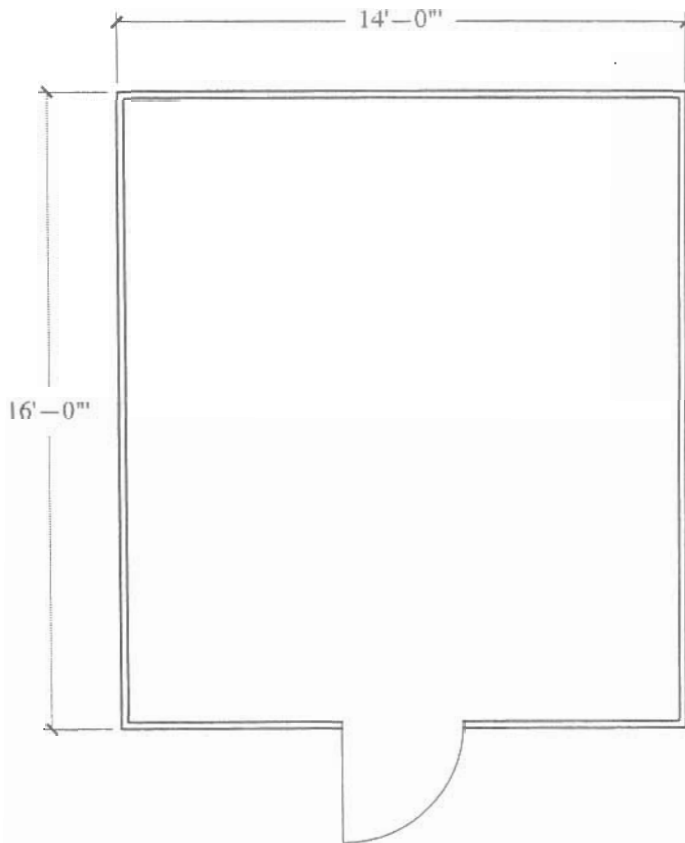
Pre-harnessed 120/208V 3 phase 60 Hz electrical kit includes fluorescent lighting, electric heating (20W/Sq Ft), and 4 receptacles.

### **Furnishings:**

By others

### **Floors:**

Weatherhaven "Knock Down" flooring system with 4"x8" built-up beams, 2"x4" joists, 3/4" plywood sheeting, R-20 batt insulation, vinyl flooring and vapour barrier.



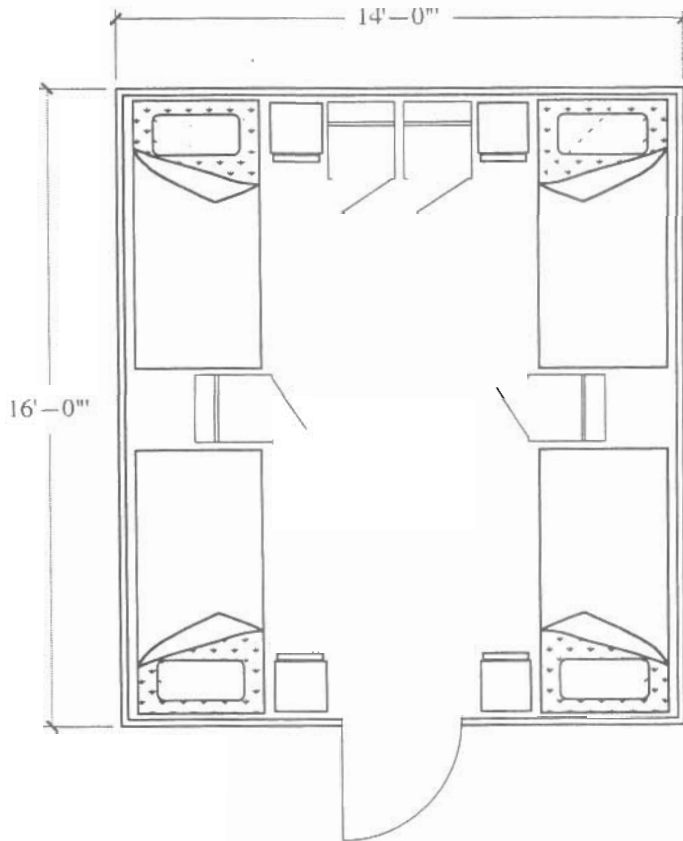
Front Elevation

NOTE: THIS DRAWING AND THE DESIGN SHOWN ARE THE PROPERTY OF WEATHERHAVEN AND MAY NOT BE REPRODUCED OR SUBMITTED TO THIRD PARTIES WITHOUT ITS EXPRESSED WRITTEN CONSENT.

Drawing No. OFC-120904\*0243



### 4 Person Sleeper



#### **Structure:**

14' x 16' Weatherhaven 4A Double Insulated complete with end vents, wind kits and 36" insulated door.

#### **Electrical / Mechanical:**

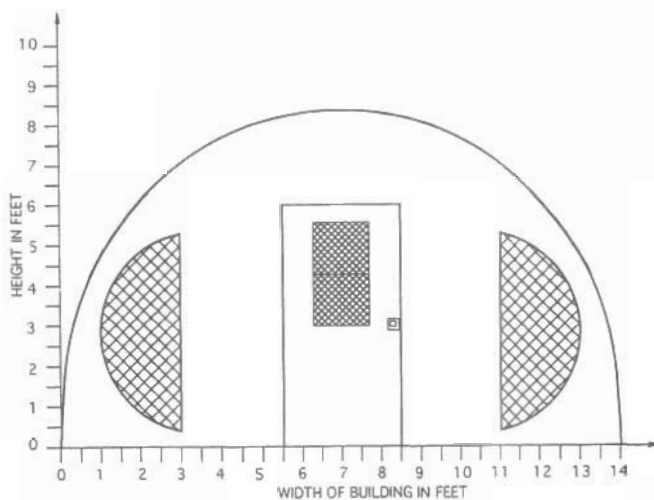
Pre-harnessed 120/208V 3 phase 60 Hz electrical kit includes fluorescent lighting, electric heating (20W/Sq Ft), four clamp lamps and 4 receptacles.

#### **Furnishings:**

4 - 36" wide beds with 4" covered foam mattress  
4 - night tables  
4 - lockers

#### **Floors:**

Weatherhaven "Knock Down" flooring system with 4"x8" built-up beams, 2"x4" joists, 3/4" plywood sheeting, R-20 batt insulation, vinyl flooring and vapour barrier.



NOTE: THIS DRAWING AND THE DESIGN SHOWN ARE THE PROPERTY OF WEATHERHAVEN AND MAY NOT BE REPRODUCED OR SUBMITTED TO THIRD PARTIES WITHOUT ITS EXPRESSED WRITTEN CONSENT.

Drawing No. SLR-120904\*0216



## Generator Shack

### **Structure:**

16' x 36' Weatherhaven Series 6 (non insulated) complete with:

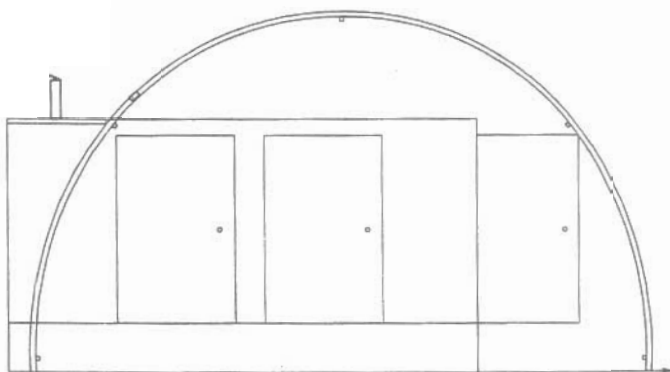
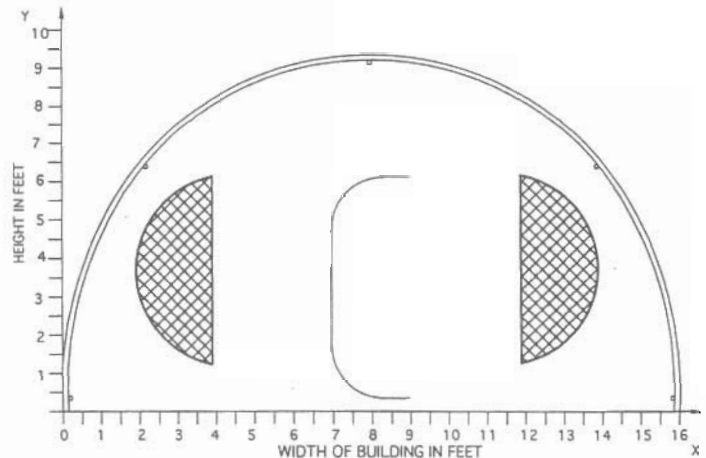
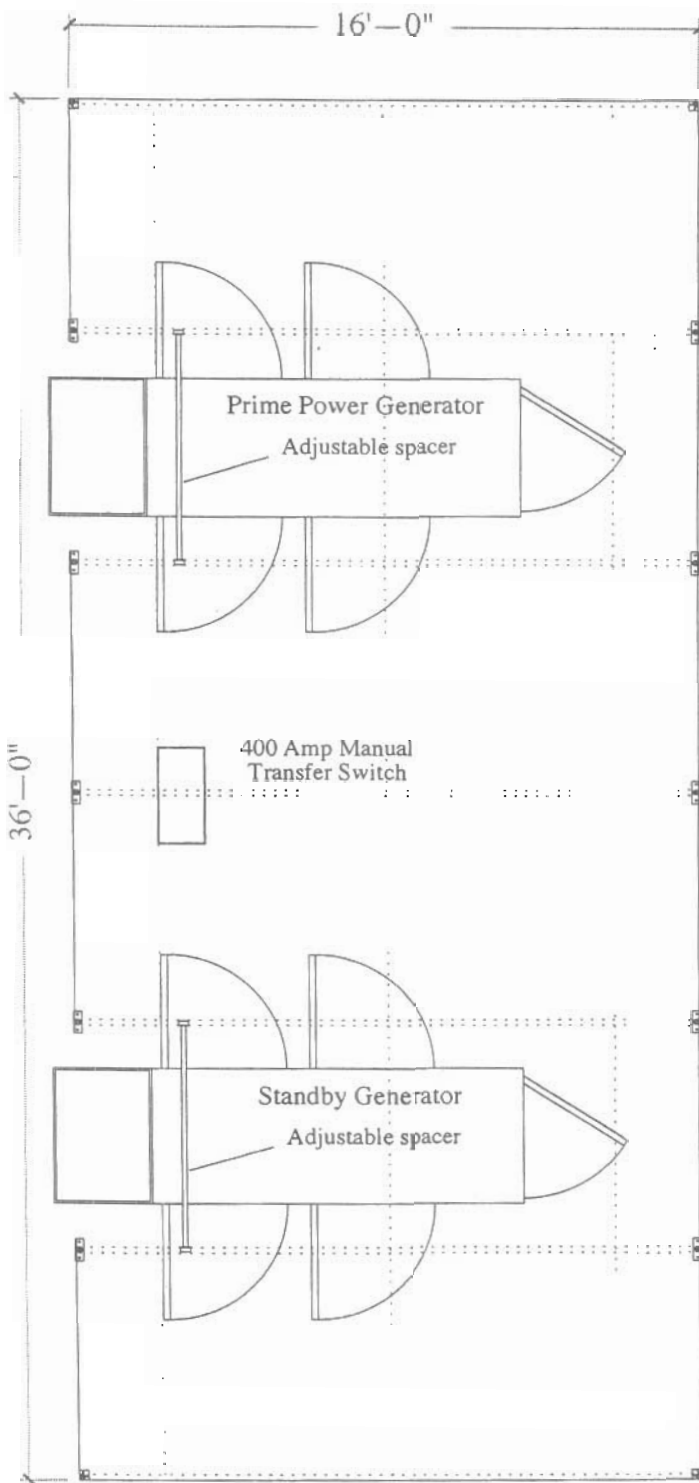
- end vents
- openings in sidewall for generator venting
- 2 only zippered C- doors (one in each endwall)
- 2 series 8 windkits
- 4 windstraps w/ anchor stakes
- 2 adjustable spacer bars

### **Mechanical / Electrical :**

Pre-harnessed (60HZ) electrical kit including 5kw unit heater, incandescent lighting w/ switch at entry door.

### **Floor:**

Installed to grade w/ 2x6 lumber sill.



NOTE: THIS DRAWING AND THE DESIGN SHOWN ARE THE PROPERTY OF WEATHERHAVEN AND MAY NOT BE REPRODUCED OR SUBMITTED TO THIRD PARTIES WITHOUT ITS EXPRESSED WRITTEN CONSENT.

Drawing No. GEN-121004\*1121