

Application to Amend NPC File #149562 [TTMG Project] to include Diamond Drilling on the Turner and Ted Properties

Project Description



Contents

Introduction..... 1

Detailed Project Description..... 1

Scheduling 1

Land Use Plan 1

List of Structures..... 1

Equipment 2

Fuel 2

Proposed Disposal Methods for Garbage..... 8

Transportation 8

Environmental Concerns 8

Environmental, Wildlife and Resource Impacts 9

 Firearms..... 9

Reclamation Cost Analysis..... 9

Reclamation Plan..... 10

Socio-Economic Considerations and Inuit Employment Opportunities 10

Figure 1 . Turner Lake, TED, McAvoy Lake and Gela Lake Mineral Tenures 4

Figure 2 Turner Lake (T1 – T3) and Ted (T4-T6) Mineral Tenures (“Properties”)..... 5

Figure 3. Gela Lake (H1, H2) Mineral Tenures (“Properties”) 6

Figure 4. McAvoy Lake (M1 – M3) Mineral Tenures (“Properties”)..... 7

Introduction

This application is in support of amending NPC File No. 149562 to include diamond drilling on the Turner and Ted properties which form part of the TTMG Project and is not a new application.

Detailed Project Description

Bathurst Metals Corp (BMV) holds the Turner Lake, TED, McAvoy Lake and Gela Lake mineral tenures ("claims" or "properties") that make up the TTMG Project. The TTMG Project ("TTMG" or "Project") is located in the West Kitikmeot region of Nunavut. The claims are located on Inuit land parcel BB-38 and are administered by the Kitikmeot Inuit Association (KIA). The Project is located approximately 180 km south of Cambridge Bay and 60 km north northwest of Bathurst Inlet. The Project area lies within two drainage basins, one that drains into the Hood River and one that drains into the James River. Both rivers drain east into Bathurst Inlet.

Geological exploration has been conducted sporadically in the Project area since 1984 by Chevron Minerals, Silver Hart Mines, Echo Bay Mines and Northrock Resources. The proposed 5000m diamond drilling will focus on known gold occurrences located on the Turner Lake and Ted claims (Figures 1, 2 & 3). BMV also proposes to continue to conduct surface mapping, geological sampling and man portable geophysical surveys on the McAvoy Lake and Gela Lake mineral claims (exploration permit already in place). BMV crews will be based out of Bathurst Inlet Lodge and will helicopter to and from the mineral claims daily for the duration of the work program. It is expected that the work will take approximately six to eight weeks to complete. If our work proves successful, one or more of the above-mentioned mineral claims could potentially be developed into a mine. Exploration work could take between five to ten years followed by ten to twenty years for mine development, operation, and closure.

Scheduling

Diamond drilling work can take place year-round, however northern operational conditions are best during the summer months. Additionally, mapping, sampling and geophysical work can only take place during the snow free period during the summer months, from July through to the end of September. BMV proposes all work will be accomplished in July and August with a buffer period to the end of September.

Land Use Plan

At this time no new lines, rights-of-way, camps or cleared areas are proposed to be used in the exercise of Right. No new permanent construction is warranted during this phase of the project.

List of Structures

A temporary 10' X 16' canvas prospectors' tent will be constructed on the Turner property at the same location that was used by previous operators for use as a core logging shelter. The location is currently being used for core storage of core from previous drill programs on the property.

Equipment

The following list details the types of equipment that will be used on the project.

Diamond drilling rig
Helicopter
Portable generators
Portable water pumps

Fuel

BMV proposes to use the following quantities of fuels for work on the project.

Diesel fuel: 50 X 205L barrels
Jet-B Helicopter fuel: 60 X 205L barrels
Gasoline: 5 X 205L barrels
Propane: 10 X 100L cylinders

All fuel used for the project will be stored on titled land at Bathurst Inlet Lodge. A maximum of five drums of fuel will be transported into the field and placed at the active drill location for immediate use.

Diesel fuel will be transferred from barrels to the drilling rig by a properly grounded electric fuel pump or a hand operated wobble pump supplied by the drilling contractor.
Jet-B fuel will be transferred from barrels to the Helicopter by a properly grounded electric fuel pump or a hand operated wobble pump supplied by Helicopter contractor. Gasoline will be transferred from barrels to 25L portable containers by a hand operated wobble pump. Gas operated portable generators and gas-powered water pumps will be filled by hand from 25L portable containers.
Propane will be used for heat at the drill rig and core logging tent.

See previously submitted Fuel Management Plan and Spill Prevention and Response Plan.

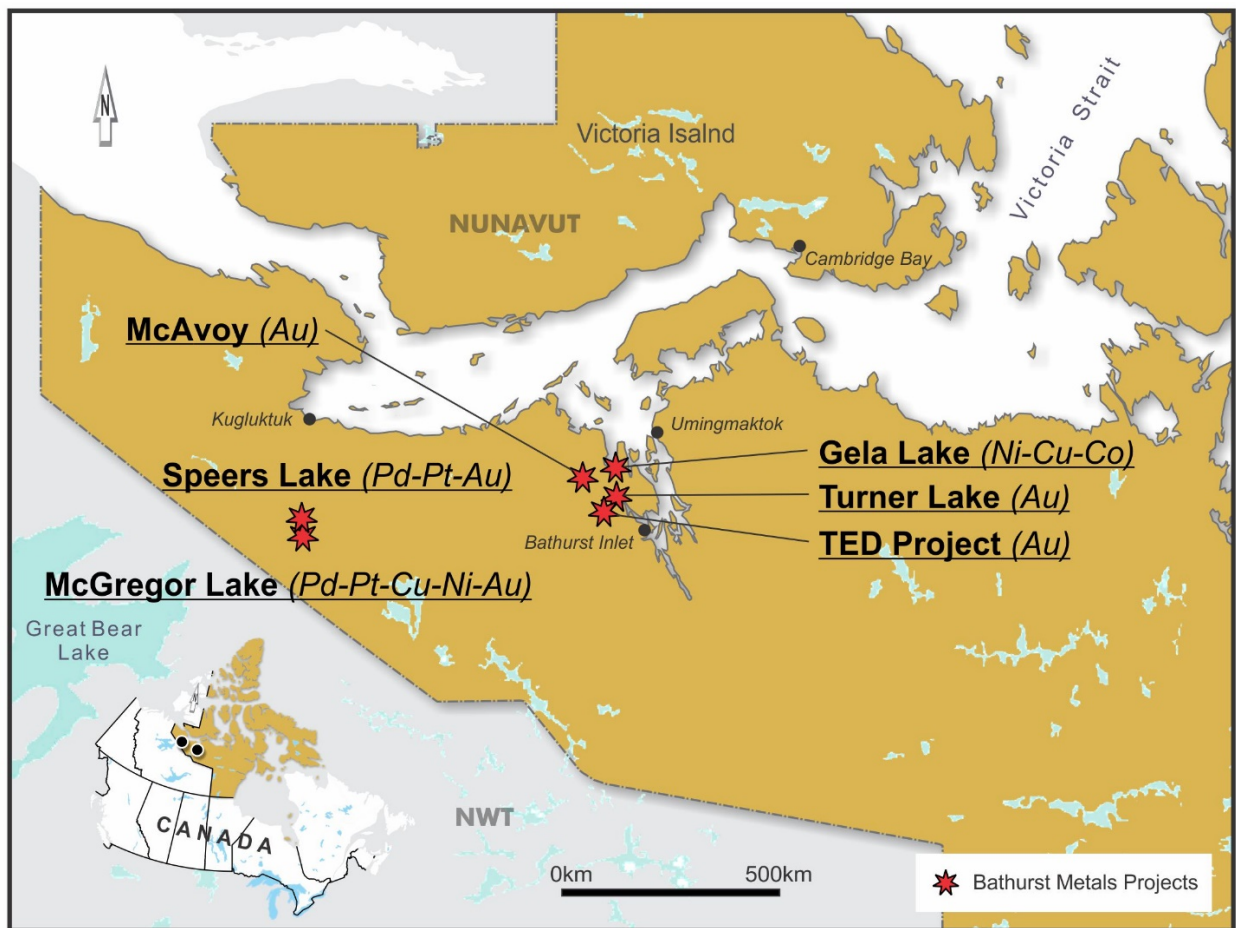


Figure 1. Bathurst Metals Project Location Map

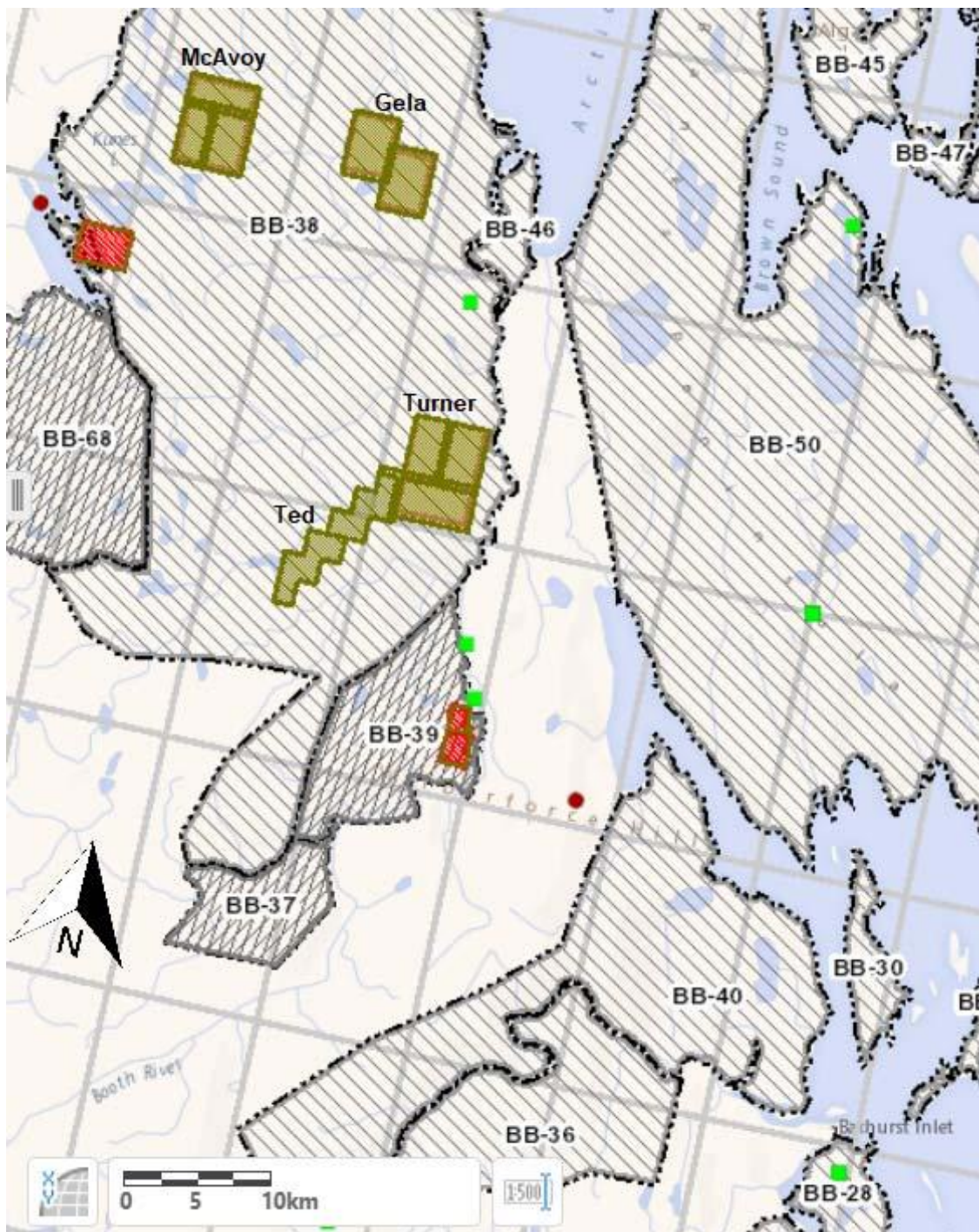


Figure 2. Turner Lake, TED, McAvoy Lake and Gela Lake Mineral Tenures

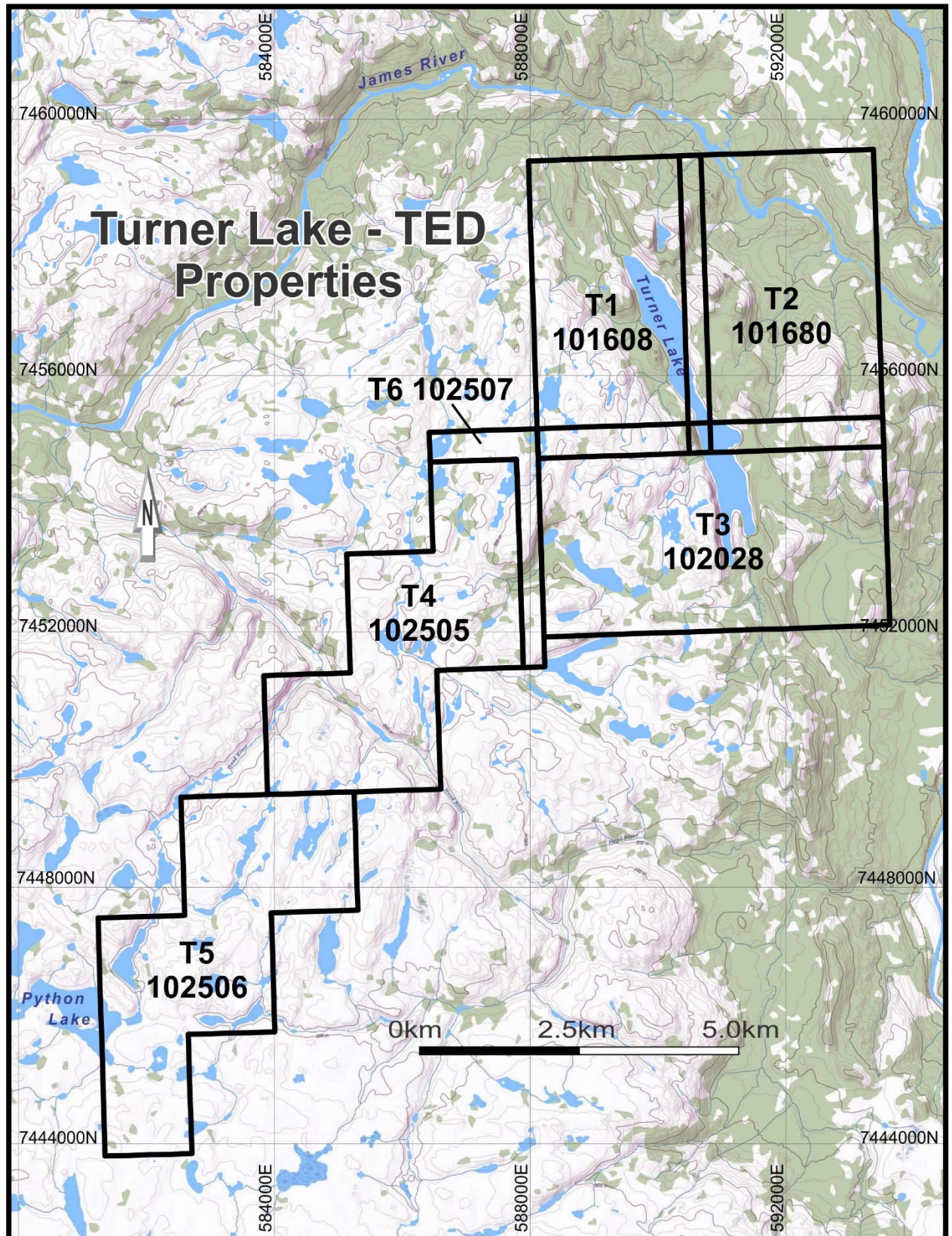


Figure 3 Turner Lake (T1 – T3) and Ted (T4-T6) Mineral Tenures

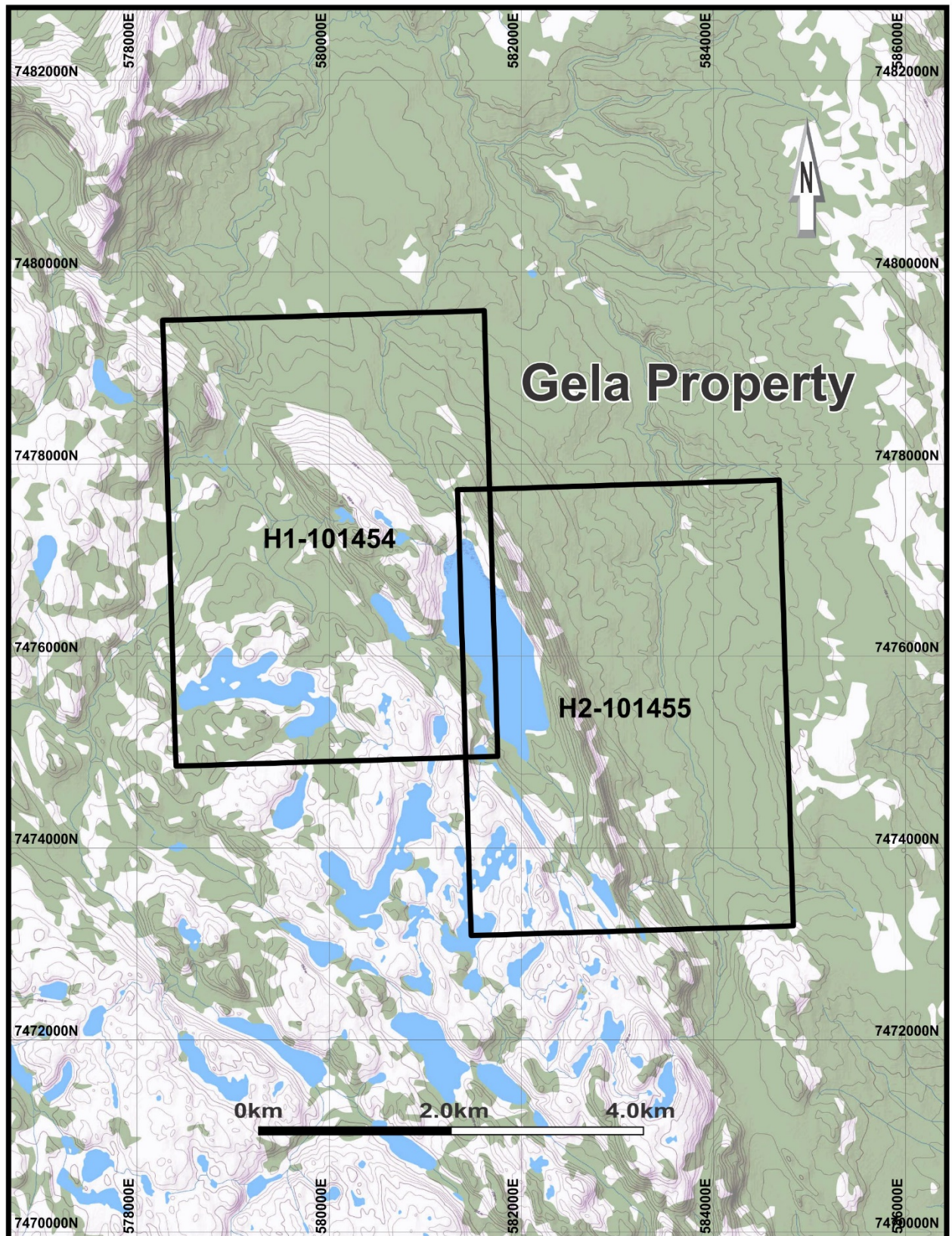


Figure 4. Gela Lake (H1, H2) Mineral Tenures

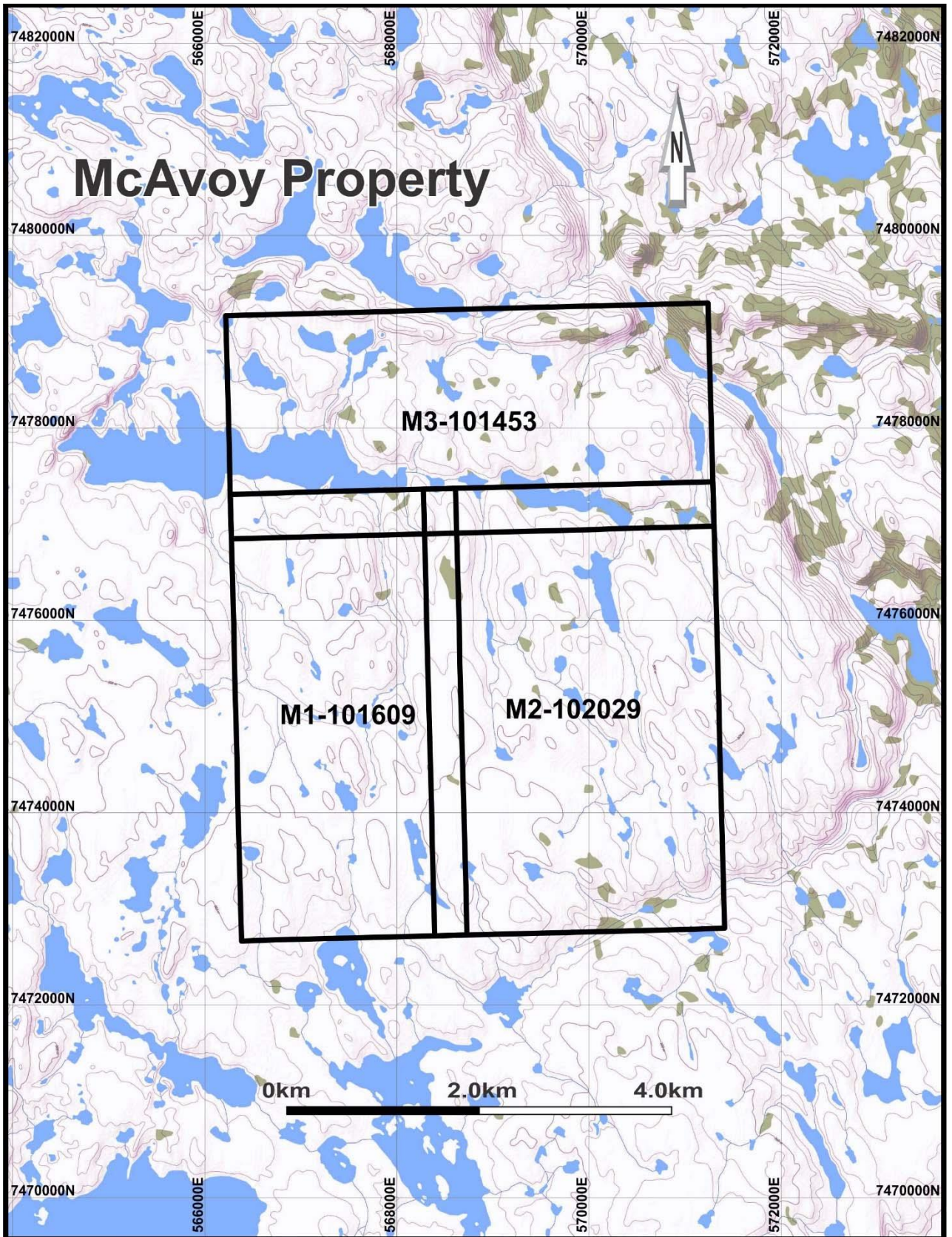


Figure 5. McAvoy Lake (M1 – M3) Mineral Tenures

Proposed Disposal Methods for Garbage

All garbage generated on the mineral claims during our work there will be bagged and transported back to Bathurst Inlet Lodge. Environmentally benign waste will be incinerated at the waste management site used by Bathurst Inlet Lodge. Recyclable materials such as scrap metal will be transported to Bathurst Inlet Lodge and taken to the nearest recycling facility in Yellowknife at the end of the project. Any non-recyclable, non-combustible waste generated by the project will be transported to the regional community landfill at Yellowknife.

All opportunities will be taken to reduce, reuse or recycle hazardous waste materials. Any hazardous waste produced because of the TTMG Project will be placed in sealed containers, labeled, and stored within secondary containment such as "Arctic Insta-Berms," or similar, until they can be reused or backhauled for recycling or disposal. Upon seasonal shutdown all hazardous wastes will be backhauled and disposed of properly to a registered hazardous waste receiver.

Human waste generated on the mineral claims will be buried.

Transportation

Commercial contract carriers such as Air Tindi or a similar carrier will be used to fly equipment and supplies from Yellowknife to the Bathurst Inlet Lodge. Once at Bathurst Inlet Lodge, equipment and supplies will be flown to and from the mineral claims using a helicopter. Crews will be flown to and from the mineral claims using the helicopter.

Environmental Concerns

Wildlife Habitat, Communities, Eskers, Historical/Archeological Sites

The mineral claims are not located on or near any known breeding, calving, post-calving, migratory, staging, denning, nesting, or spawning areas. Anecdotal reports from previous workers on the claims indicate sightings of Caribou, Moose, Wolves, Muskox, Grizzly Bear and Waterfowl in the vicinity of the work areas on a few occasions through the summer months. Project staff will be educated in wildlife encounter mitigation. If a caribou migration event is observed while working on the claims, the crew will move to conduct work on an adjacent claim to minimize wildlife disturbance.

The closest community to the project is Bathurst Inlet Lodge. The location is used seasonally as a fishing and hunting camp and has also seen use as an ecotourism and outfitting lodge. The community is not habituated for the entire year.

No known Eskers are mapped on the mineral tenures. If an unmapped esker is located on a tenure, the location will be noted, and the KIA will be notified at the earliest opportunity.

No known historical or archeological sites are known to be located on the property.

In March 2021, Rae-co Consulting Ltd. (Rae-co) conducted a search of the Nunavut Archaeological Site database and found that no previously recorded sites had been documented or any archaeological assessments been carried out within the TTMG Property.

If crews locate an archeological or paleontological site on the mineral claims, activity in the area of the find will cease immediately and contact will be made to the Territorial Archaeologist (867) 934-2040 as

soon as possible. A report will be prepared documenting the discovery and sent to CH, CIRNAC and the KIA. Reports will include GPS coordinates, a brief description of the site and/or artifact and photos (if possible).

Environmental, Wildlife and Resource Impacts

The environmental impact of the drill program will be minimized as much as possible. Ground disturbance created by the drill rig will be mitigated by using timbers to support the rig and isolate the rig from the ground surface.

Water required for the drill project is estimated at 30m³/d and 1500m³/year. Surface water will be collected from local small water bodies adjacent the drill location.

Drill cuttings produced from the drilling process are environmentally benign and will be placed in shallow depressions adjacent the drill rig. All drilling additives used in the drilling process will be environmentally friendly and safe for the local environment.

Wildlife will likely not be affected by the type of exploration work proposed for the TTMG project. However, the noise from use of a helicopter for crew transport can impact wildlife. The pilot and crews will be instructed to remain vigilant regarding wildlife while flying on approaches to landing sites. In the event wildlife is observed in the vicinity of the landing area, an alternate landing site will be chosen to minimize impact to wildlife. And conversely, when a rendezvous site is occupied by wildlife, the pilot or crew will radio for an alternate pick-up spot away from wildlife. Minimum safe distance will be set a 500m from the closest animal.

During past work on the Turner Lake property, Caribou and Muskox have been observed moving through the property. All potential hazards to and from wildlife are identified and mitigated as much as possible. All Bathurst Metals workers must adhere to company health and safety guidelines and are directed to not interact with wildlife, thereby minimizing any adverse effects on wildlife by project activities.

Animal sightings will be recorded in a "Wildlife Record Log" and reported to the KIA and the Government of Nunavut, Department of Environment Wildlife Office in Kugluktuk (867) 561 6231.

Firearms

Registered firearms will be located at Bathurst Inlet Lodge and carried in the field to ensure the safety of all personnel on the Project. 12-gauge shotguns are the preferred firearm to be used for the purposes of bear deterrence as they are capable of firing non-lethal deterrents and lethal rounds.

All persons carrying or handling a firearm must have a valid Firearms License. Hunting is strictly prohibited for all employees and will result in immediate termination and potential charges for any territorial hunting violations. Use of firearms against nuisance or aggressive wildlife is considered only as a last resort. Non-lethal deterrents will always be used whenever possible to deter problem wildlife with lethal rounds only being used in defense of life or property.

Reclamation Cost Analysis

As this is a greenfields exploration program with minimal environmental impact, the majority of cost associated with drill site reclamation would be for the demobilization of the drill rig from the project

area to the drill contractors' location. An estimated sum of \$30,000 CAD is budgeted for the drill rig demobilization and final clean-up of the drill sites.

Reclamation Plan

No ground disturbance will be made during drilling operations. Reclamation will include removing all equipment and supplies from the drill sites at the end of the season's work.

Socio-Economic Considerations and Inuit Employment Opportunities

- I. Bathurst Metals Ltd. proposes a \$2.5 million dollar budget for the project.
- II. Approximately 35% of the total budget will go to Inuit firms/employees.
- III. Approximately five positions will be created for the duration of this project.
- IV. Bathurst Metals plans to use the lodging and catering services offered by Bathurst Inlet Lodge. The lodge is operated by Sam and Allen Kapolak along with their wives Susie and Connie in cooperation with Boyd Warner of Yellowknife.
- V. There will be an opportunity for two Inuit students to assist BMV geologists with project logistics. Workers who assist BMV geologists will have an opportunity to train and perform some of the technical aspects of mineral exploration and gain experience in the management of field exploration operations.
- VI. There will also be an opportunity for a third Inuit worker to assist in day-to-day lodge operations.