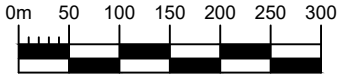
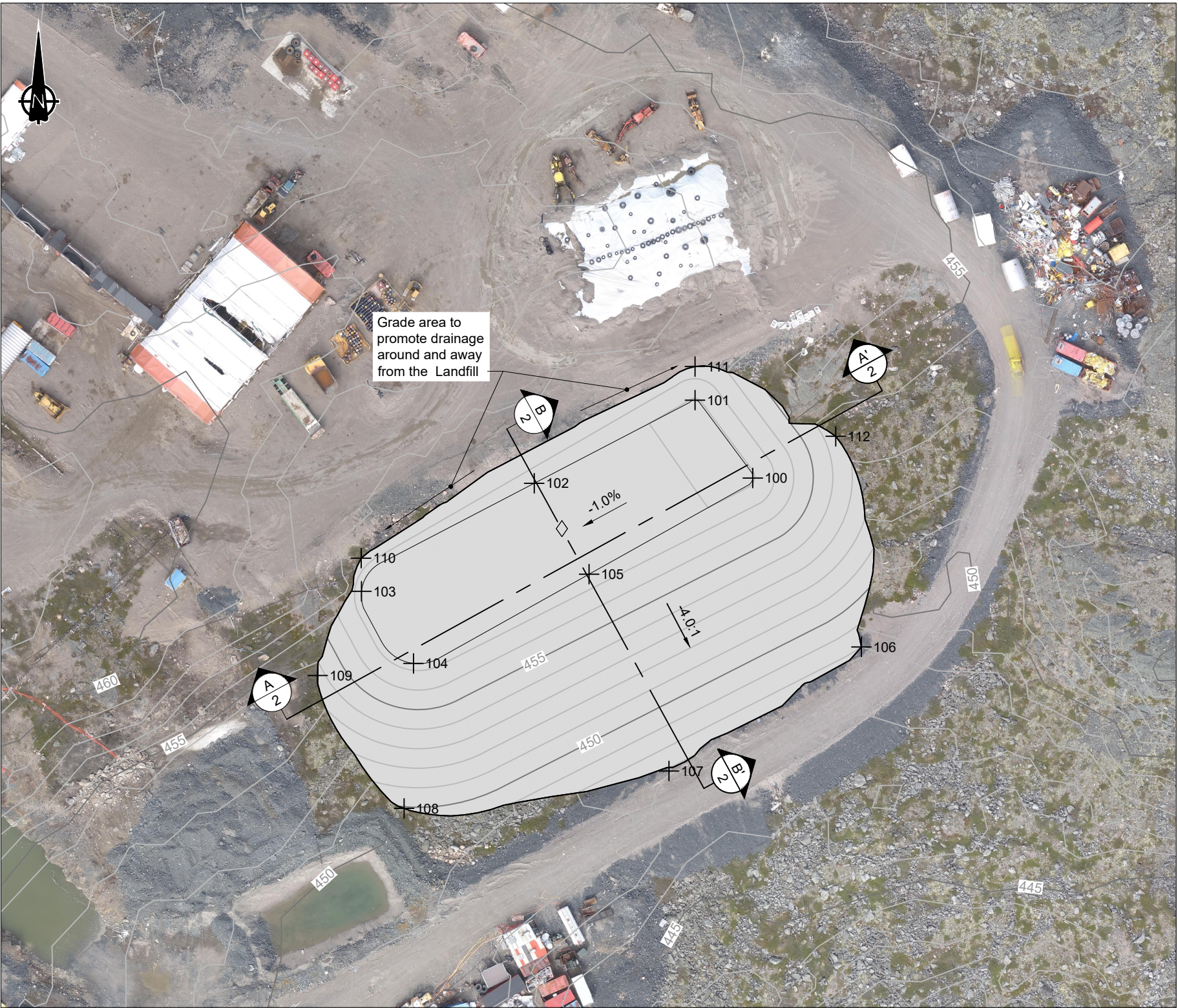


Key Plan

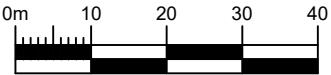


STAKEOUT POINTS				
Point #	Northing	Easting	Elevation (m)	ID
100	7421137.03	501518.39	458.10	PileTop
101	7421152.96	501506.58	458.10	PileTop
102	7421135.95	501473.66	457.72	PileTop
103	7421113.83	501438.29	457.35	PileTop
104	7421099.06	501448.94	457.35	PileTop
105	7421117.34	501484.89	457.71	PileTop
106	7421102.44	501540.64	448.00	PileToe
107	7421077.04	501501.24	446.92	PileToe
108	7421069.39	501447.03	449.91	PileToe
109	7421096.59	501429.33	453.65	PileToe
110	7421120.61	501438.23	453.65	PileToe
111	7421159.85	501506.58	453.65	PileToe
112	7421145.57	501535.38	453.41	PileToe

Landfill Volumes	
Material	Volume m³
General Waste	20,100
Interim Cover	2485
Final Cover	3130
(See Note 5)	



Landfill - Plan



LEGEND

Design Infrastructure

NOTES

- Contours shown at 1.0m intervals.
- All dimensions are in meters unless otherwise noted.
- Limits of existing roadway surfaces are approximate.
- Landfill boundary limit to be delineated in field by means of markers or a small berm and confirmed by On-Site Engineer.
- Final Cover volume estimate based on 350mm cover to accommodate possible oversize material.
- All construction material to be approved by the Design Engineer.
- Establish control points outside of construction area for reference, location to be determined on site with survey.
- All survey layout to be checked by contractor prior to construction.
- All construction to be completed in accordance with the technical specifications in the design memorandum (Ulu Gold Project Non-Hazardous Waste Landfill Design. March 2020. Project No. 1CB041.000).

REFERENCE

- Coordinate System is WGS84 UTM Zone 12N.
- Background Image and drone survey completed 07/17/2019 by Blue Star Gold Corp.

srk consulting

SRK JOB NO.: 1CB041.000  
FILE NAME: 1CB041.000 Non-Hazardous Waste Landfill.dwg

BLUE STAR  
GOLD CORP.

Blue Star Gold Corp.

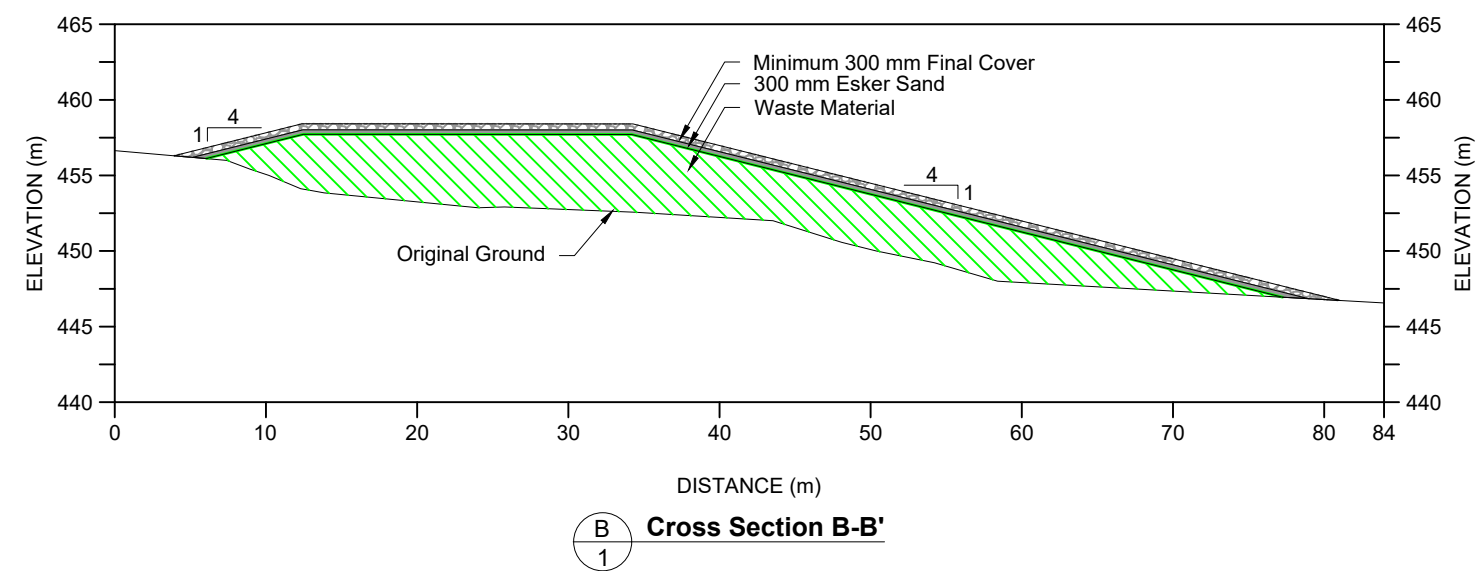
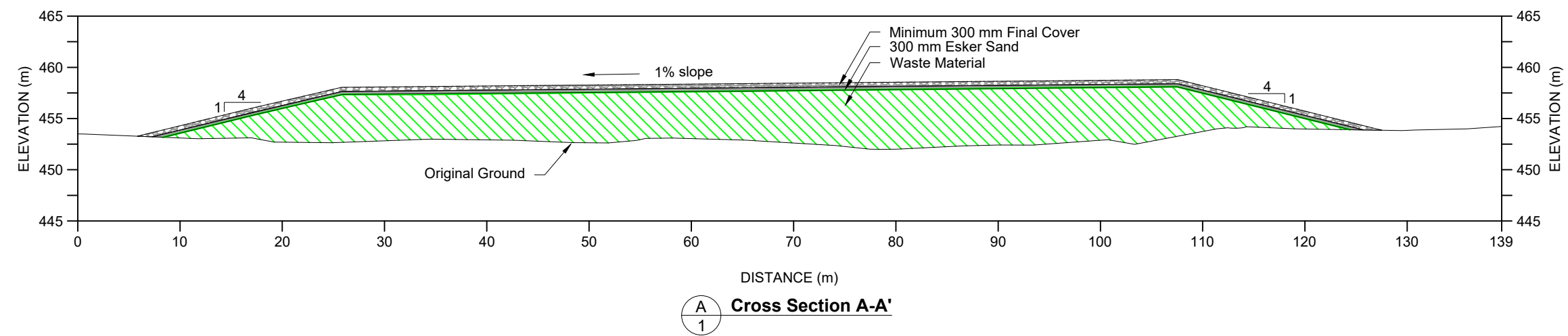
Ulu Gold Project

Landfill  
Plan

DATE: June 2020  
APPROVED: MN  
FIGURE: 1



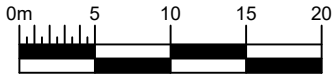
P:\01\_SITES\Ulu\UluCAD\1CB041.000\_Landfill\_Design\1CB041.000 Non-Hazardous Waste Landfill.dwg



LEGEND	
	Waste Material
	Esker Sand
	Final Cover

- NOTES**
1. All dimensions are in meters unless otherwise noted.
  2. Suitability of the cover material to be approved by the on site engineer.
  3. Cover material should be restricted to a maximum size of 150 mm (Approximately 50% of thickness).
  4. Compaction of the cover material should meet the requirements established by the On-Site Engineer at time of construction.
  5. Final elevation and landform may vary based on the final quantity of waste.
  6. All construction to be completed in accordance with the technical specifications in the design memorandum (Ulu Gold Project Non-Hazardous Waste Landfill Design, March 2020. Project No. 1CB041.000).

- REFERENCE**
1. Coordinate System is WGS84 UTM Zone 12N.



		Ulu Gold Project		
		Landfill Sections		
SRK JOB NO.: 1CB041.000	Blue Star Gold Corp.	DATE:	APPROVED:	FIGURE:
FILE NAME: 1CB041.000 Non-Hazardous Waste Landfill.dwg		June 2020	MN	2