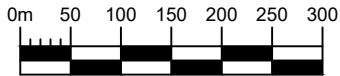
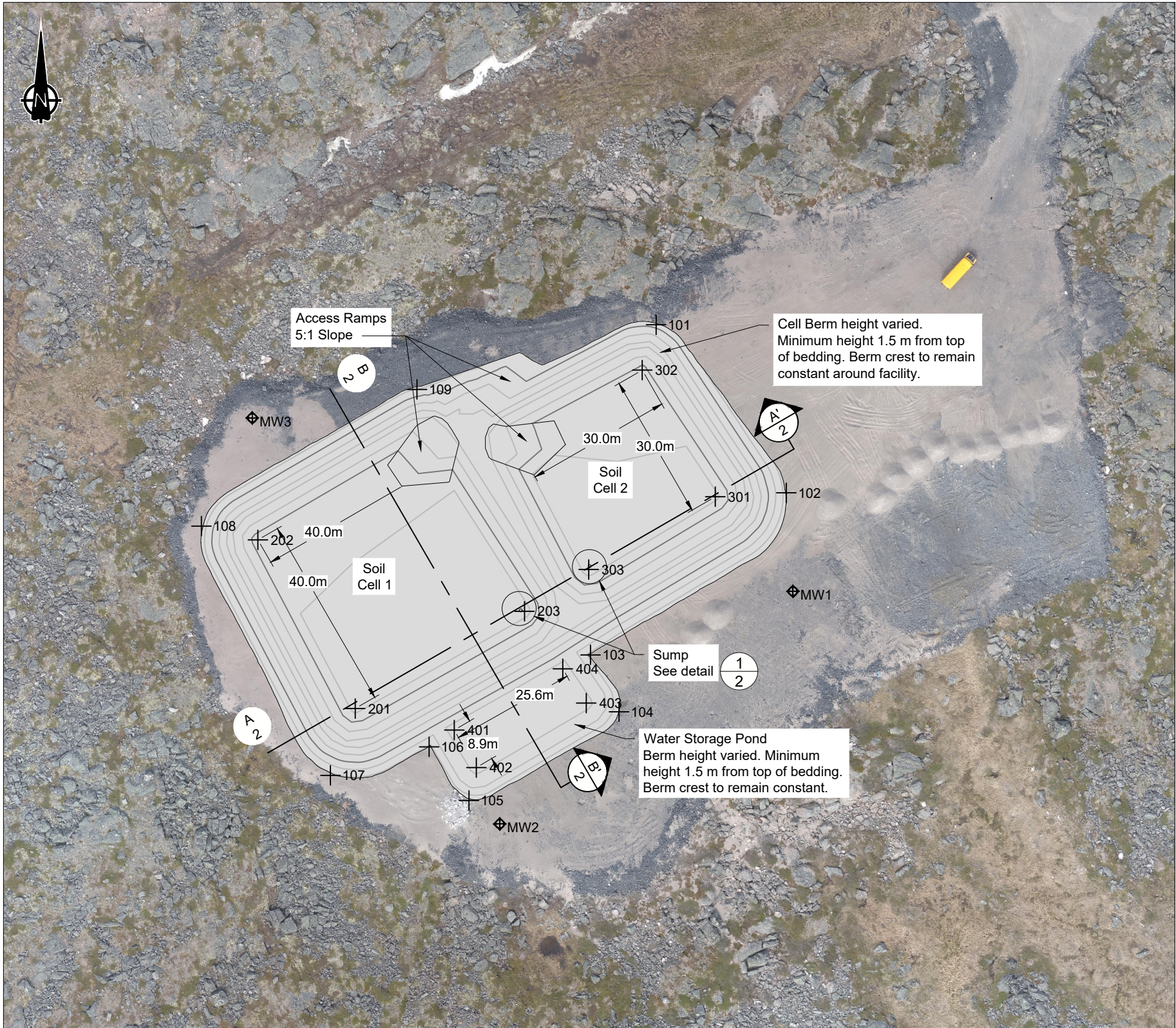


Key Plan

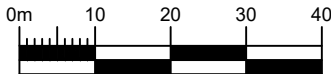


STAKEOUT POINTS				
Point #	Northing	Easting	Elevation (m)	ID
101	7420875.53	501181.22	TBD	BASE
102	7420841.00	501207.97	TBD	BASE
103	7420807.72	501167.76	TBD	BASE
104	7420796.04	501173.61	TBD	BASE
105	7420777.83	501142.78	TBD	BASE
106	7420788.85	501134.60	TBD	BASE
107	7420782.98	501114.33	TBD	BASE
108	7420834.16	501087.84	TBD	BASE
109	7420862.24	501132.12	TBD	BASE
201	7420796.71	501119.42	TBD	Cell 1
202	7420831.34	501099.43	TBD	Cell 1
203	7420816.68	501154.20	TBD	Cell 1
301	7420840.21	501193.39	TBD	Cell 2
302	7420866.21	501178.38	TBD	Cell 2
303	7420825.26	501167.38	TBD	Cell 2
401	7420792.29	501139.77	TBD	Water Cell
402	7420784.58	501144.31	TBD	Water Cell
403	7420797.83	501166.88	TBD	Water Cell
404	7420804.86	501162.07	TBD	Water Cell

Note: Elevations to be determined on site and confirmed by On-Site Engineer.



Soil Treatment Facility - Plan



Material Volumes	
Liner (m ²)	5,630
Liner Cover (m ³)	804
Bedding (m ³)	5,633
Bulk Fill (Base & Berm) (m ³)	10,500

(See Note 4)

srk consulting

SRK JOB NO.: 1CB041.000
FILE NAME: 1CB041.000 Contaminated Soil Treatment Facility.dwg

BLUE STAR GOLD CORP.

Blue Star Gold Corp.

LEGEND

Monitoring Well Location

NOTES

- Contours shown at 1.0m intervals.
- All dimensions are in meters unless otherwise noted.
- Limits of existing roadway surfaces are approximate.
- Construction material to be approved by the Design Engineer.
- Establish control points outside of construction area for reference, location to be determined on site with survey.
- All survey layout to be checked by contractor prior to construction.
- All construction to be completed in accordance with the technical specifications in the design memorandum, Ulu Gold Project Soil Treatment facility Design. March 2020. Project No. 1CB041.000

REFERENCE

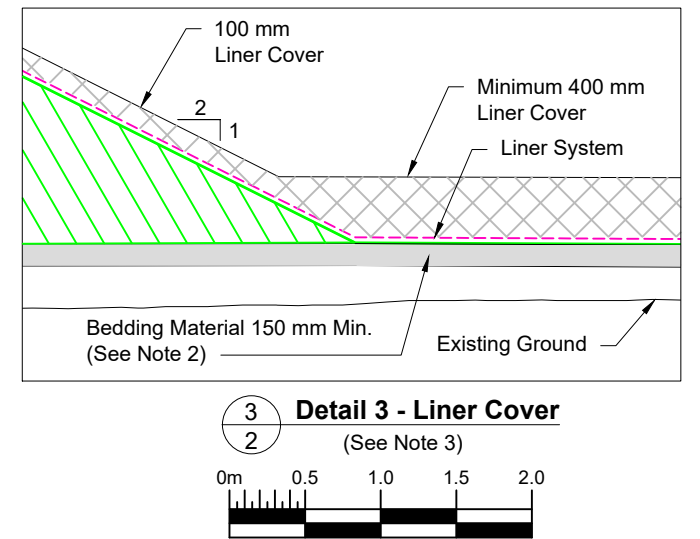
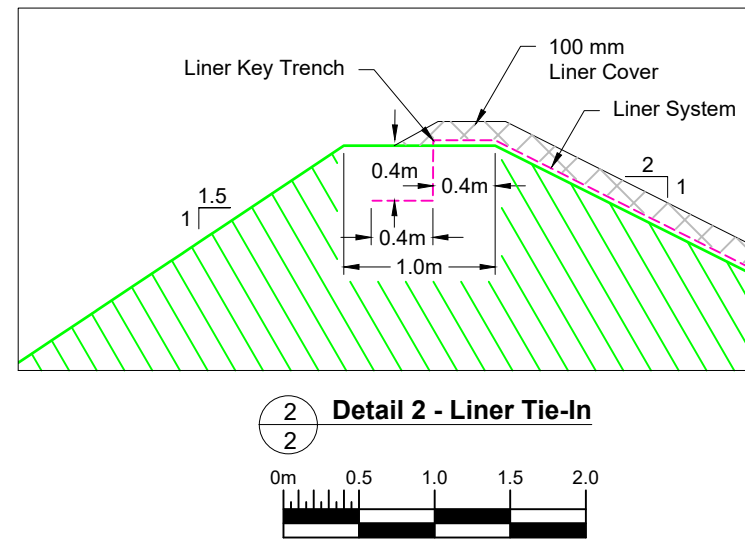
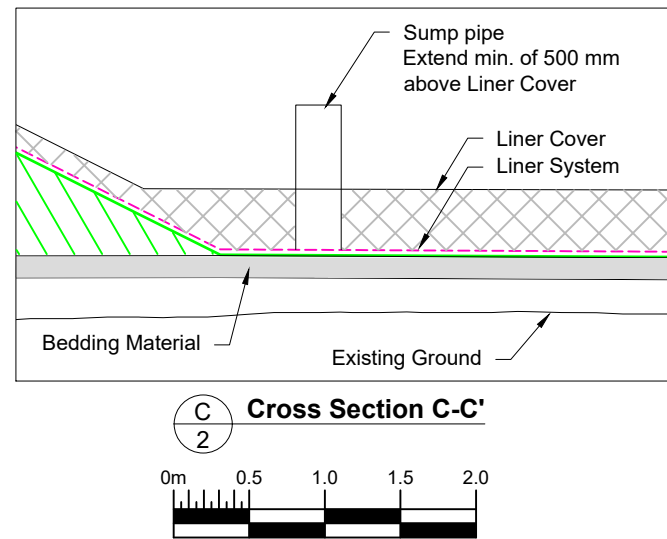
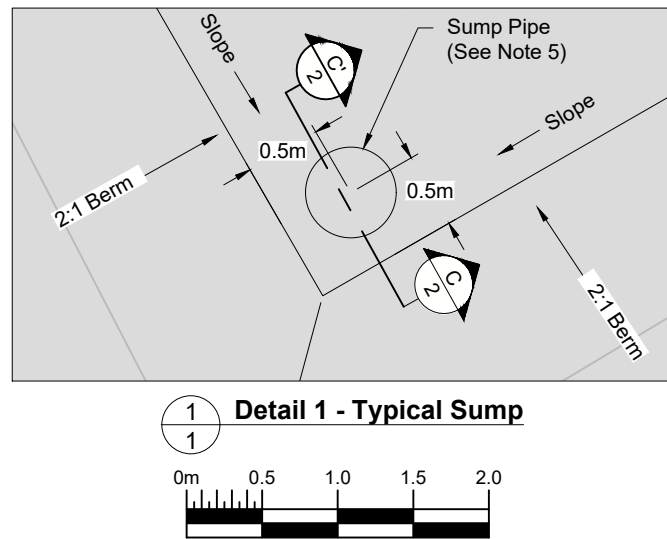
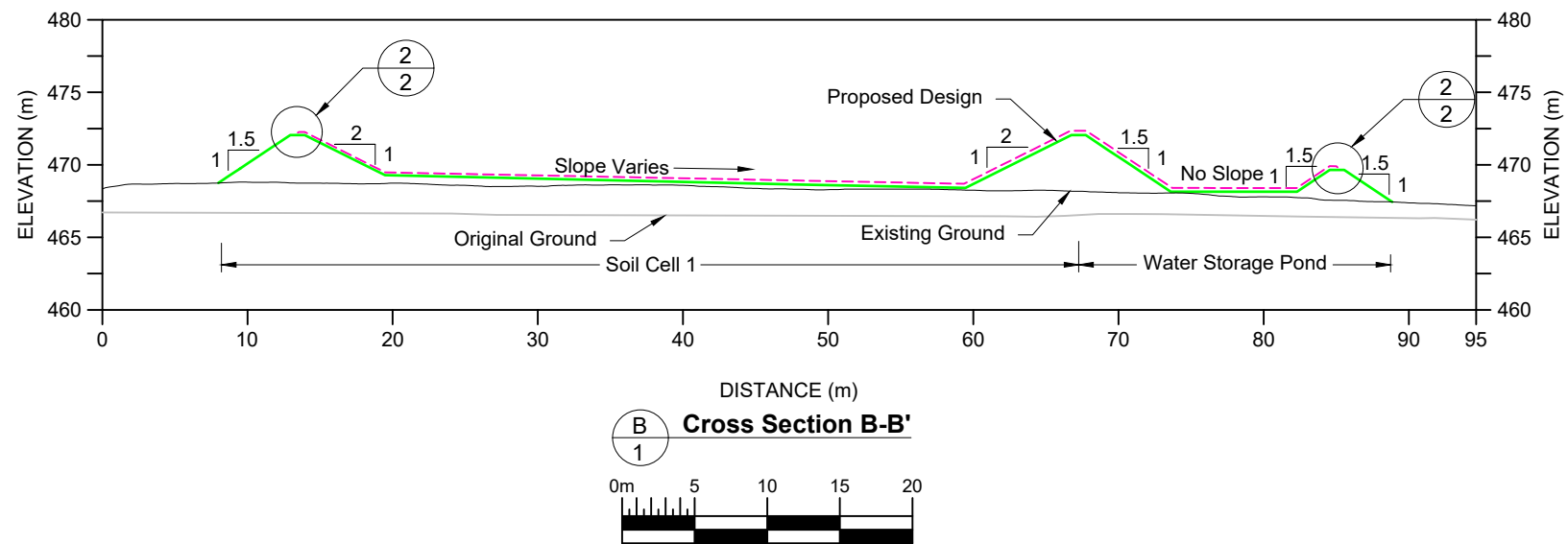
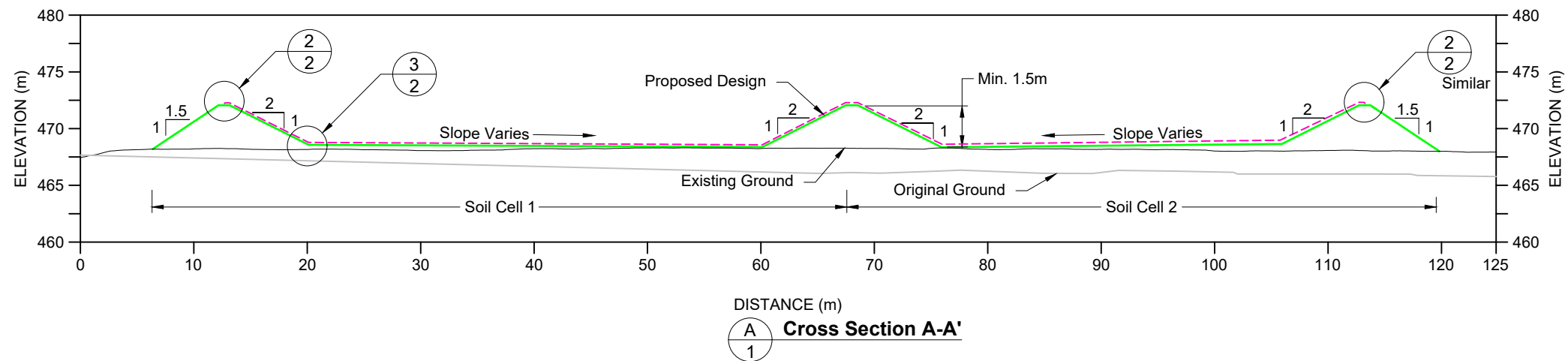
- Coordinate System is WGS84 UTM Zone 12N.
- Background Image and drone survey completed 07/17/2019 by Blue Star Gold Corp.

Ulu Gold Project

Soils Treatment Facility Plan

DATE: June 2020
APPROVED: MN
FIGURE: 1

P:\01_SITES\Ulu\Ulu_AuxCAD\1CB041.000 Contaminated Soil Treatment Facility.dwg



LEGEND

- General Fill Material
- Liner Cover Material
- Liner System
- Bedding Material

NOTES

- All dimensions are in meters unless otherwise noted.
- Compaction of the material should meet the requirements established by the On-Site Engineer at time of construction.
- Liner and geotextile to be approved by Design Engineer, specifications found in design memo.
- Liner installation contractor to supply quality control plan in accordance with manufacturer specifications for client and Design Engineer approval.
- Minimum 300 mm diameter perforated HDPE pipe covered with woven geotextile or approved equivalent. Sump pipe should remain accessible and raised if required.
- Water Storage Pond cover to be 100 mm thick, reminder of facility as noted in detail 3.
- No equipment to run directly on liners system. Material to be placed prior to traversing over lined area. Turning of equipment must be minimized where possible.

REFERENCE

- Coordinate System is WGS84 UTM Zone 12N.
- Existing Ground surface created from drone survey completed 07/17/2019 by Blue Star Gold Corp.

srk consulting

SRK JOB NO.: 1CB041.000

FILE NAME: 1CB041.000 Contaminated Soil Treatment Facility.dwg

BLUE STAR
GOLD CORP.

Blue Star Gold Corp.

Ulu Gold Project

Soil Treatment Facility
Sections

DATE:
June 2020

APPROVED:
MN

FIGURE:
2