

Sheldon Dorey
Senior Administrative Officer (SAO)
Hamlet of Baker Lake
Email: sdorey@bakerlake.ca

Darlene Nukik
Economic Development Officer
Hamlet of Baker Lake
Email: dnukik@bakerlake.ca

Baker Lake Hunters & Trappers
Baker Lake
Tel.: 867- 793-2520
Email: bakerlake@kivalliqto.ca

Goump Djalogue
Manager of Planning & Implementation
Nunavut Planning Commission (NPC)
Tel: 867-979-8260
Email: gdjalogue@nunavut.ca

Tracey McCaie
Manager, Lands Administration
Crown-Indigenous Relations and Northern Affairs
Canada (CIRNAC)
Tel: 867-975-4280
Email: tracey.mccaie@rcaanc-cirnac.gc.ca

Tara Arko
Director, Operations
Nunavut Impact Review Board (NIRB)
Tel: 867-983-4611
Email: tarko@nirb.ca

Richard Dwyer
Manager of Licensing
Nunavut Water Board (NWB)
Tel.: 867-360-6338 ext. 27
Email: richard.dwyer@nwb-oen.ca

Linden Charlton
Project Manager
Dahrouge Geological Consulting Ltd.
Tel.: +1-514-944-7239
Email: linden.charlton@dahrouge.com

RE: NOTIFICATION TO THE HAMLET OF BAKER LAKE, HUNTERS AND TRAPPERS' ORGANIZATION OF BAKER LAKE, REGULATORY AGENCIES, AND OTHER INTERESTED PARTIES REGARDING GREENRIDGE EXPLORATIONS' MINERAL EXPLORATION ACTIVITIES AT THE NUT LAKE PROPERTY

Dear Mr. Dorey, Ms. Nukik, and the Hunters and Trappers' Organization of Baker Lake,

I am writing to you on behalf of Greenridge Exploration, a mineral exploration company that is planning to conduct general exploration activities on the Nut Lake Property, located in the Kivalliq, Nunavut region., to initiate a consultation process in order to ensure that our activities align with expectations and limitations set out by land stewards and users. Greenridge Exploration intends to conduct a ground exploration program on the Nut Lake Property, a property that covers 4,036 hectares (~40km²) of crown land and is located approximately 175km southwest of Qamani'tuaq (Baker Lake).

Greenridge is committed to responsible and sustainable exploration. As such, we are committed to preserving the environment, respecting Indigenous rights, and fostering positive relationships with the communities where we work.

As part of our consultation process, we would like to open dialogue with representatives from your community. Through these conversations, we hope to:

1. Share information about our exploration activities at the Nut Lake Property, including our objectives, methodologies, and potential impacts on the environment and community.
2. Listen to your perspectives and concerns regarding our activities and the broader development of the region and incorporate your feedback into our approach to operating in the region.
3. Explore avenues for community engagement, including potential employment opportunities, as we plan for larger-scale exploration programs at the Nut Lake Property in the future.
4. Establish mechanisms for ongoing communication and feedback throughout the duration of our exploration activities.

We understand that consultation is a two-way process, and we are committed to actively listening and responding to your feedback. Your insights and expertise are invaluable to us as we strive to conduct our operations in a manner that is respectful, transparent, and mutually beneficial.

Please see attached “Greenridge Exploration Nut Lake Uranium Property Non-Technical Summary” for our project description and location map. If you have any questions or would like more information about our activities, please do not hesitate to contact us or our principal consultant for this project – Linden Charlton of Dahrouge Geological Consulting.

If there are any other interested parties regarding our mineral exploration activities at the Nut Lake Property, please feel free to forward this letter to them or their contact information to us.

Thank you for considering our invitation to engage in consultation. We look forward to the opportunity to collaborate with your community and build a relationship based on trust, respect, and mutual understanding.

Sincerely,



Russell Starr
Chief Executive Officer, Director
Telephone: +1 (778) 897-3388
Email: russell@greenridge-exploration.com



Nut Lake Property Non-Technical Summary

The Nut Lake Property (the “Property” or the “Project”) consists of three contiguous mineral claims covering approximately 4,036 hectares (~40km²) located on National Topographic System (“NTS”) map sheet 065O01 and centered at 533,130mE, 6993205mN North American Datum 1983 (“NAD83”) Universal Transverse Mercator (“UTM”) Zone 14N. Greenridge Exploration (“Greenridge” or the “Company”) entered into an Option Agreement with three optionors to acquire 100% interest in the Property. The Nut Lake Property is situated entirely on crown land and located approximately 175km southwest of Qamani’tuaq (Baker Lake).

Greenridge is proposing a 2024 field program for the Property that is anticipated to commence on July 25, and finish on or around August 26. The 2024 exploration program will include the establishment of a seasonal eight-person camp with fuel cache to be constructed around the northeast portion of the property near an unnamed lake (potential camp 1: 529783mE, 6996000mN; potential camp 2: 529021mE, 6995340mN). Structures for the proposed camp will include 3 sleeper tents, 1 kitchen tent, 1 dry tent (with showers), 1 office tent, generator shack, and outhouses/pacto system. Most of the structures will be canvas prospector tents, or similar, with plywood floors.

Three camp construction personnel will be on site for a total of 8 days (5 days for set up and 3 days for take down). Staff on site for the duration of the work program will consist of 4 geologists, 2 helicopter-company personnel, 1 cook, and 1 camp manager. Total amount of time spent on site will amount to approximately 208 man-days.

All waste will be brought back to Qamani’tuaq (Baker Lake) for disposal.

The proposed field program will consist of general exploration activities such as prospecting, geological mapping, geochemical sampling (rock, soil, and till), drone photogrammetry and/or airborne geophysical survey.

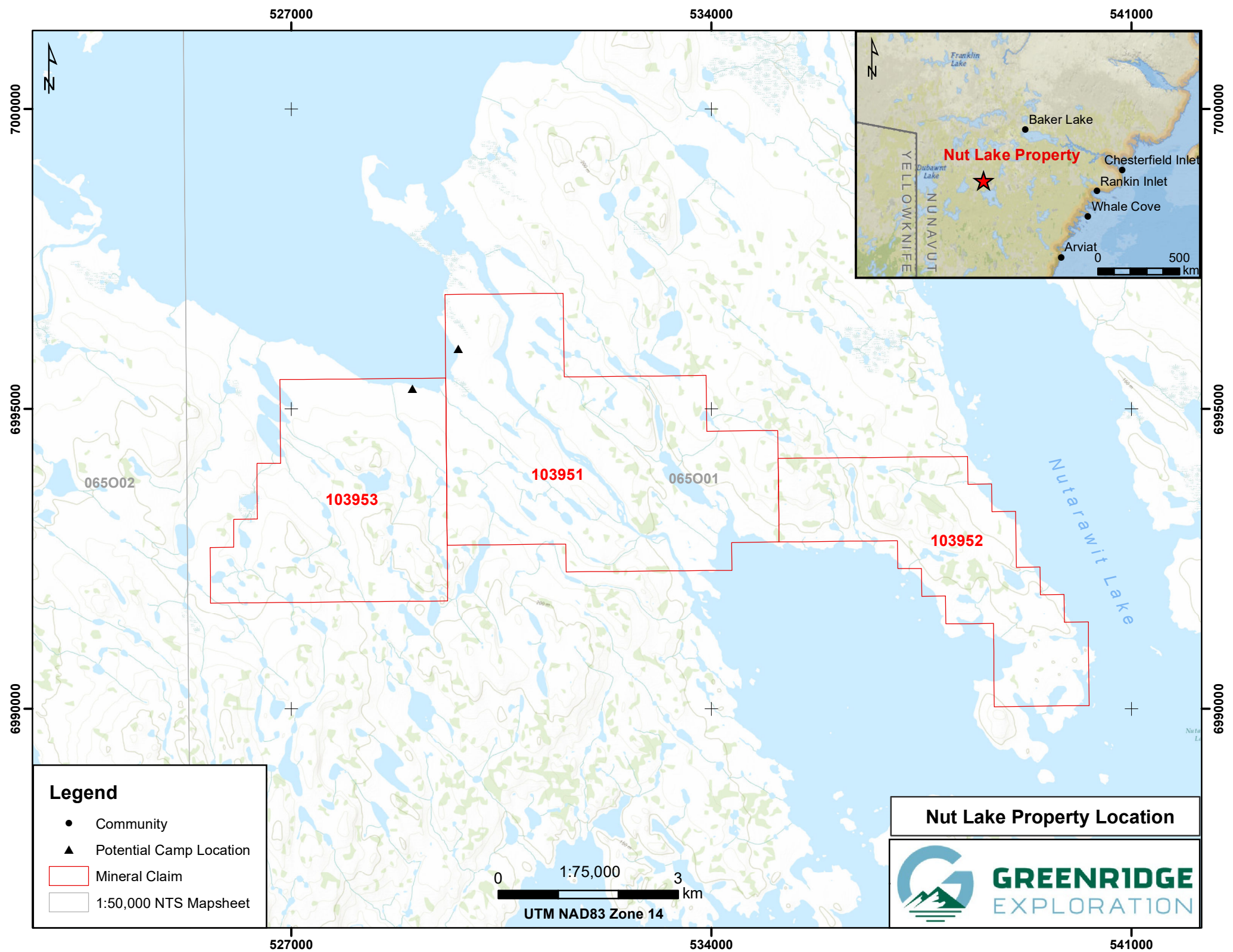
The proposed work will be helicopter-supported and require the occasional landing of the aircraft. To mitigate any potential impact on wildlife, the helicopter will always maintain a minimum altitude of 610 m (2,100 ft) above ground level except during landing, take-off or if there is a specific requirement for low level flying (e.g. airborne surveys). Wildlife will be avoided, and the helicopter will not land in the presence of wildlife except in an emergency.

All empty fuel drums will be brought back to Qamani’tuaq (Baker Lake) for disposal.

Greenridge is awaiting NPC determination to determine if a Nunavut Impact Review Board (“NIRB”) Screening will be required. The Company is also currently applying for a Land Use Permit (“LUP”) from Crown-Indigenous Relations and Northern Affairs Canada (“CIRNAC”) and a Nunavut Water Board (“NWB”) water license to authorize the proposed seasonal camp.

Absolutely no activities will be conducted that will interfere with caribou cows and calves, and no exploration activities will cause a diversion in the migration patterns of any caribou. Greenridge will communicate with all interested parties regarding caribou sightings and appraised movements in the area.

Notifications will be sent to the Hamlet and the Hunters and Trappers Organization, and in the event that further consultation is required, Greenridge will ensure that best efforts are made to engage with the community and organizations as advised by regulatory agencies.





<https://www.gov.nu.ca/en/culture-language-heritage-and-art/inuktitut-translator-tool>

