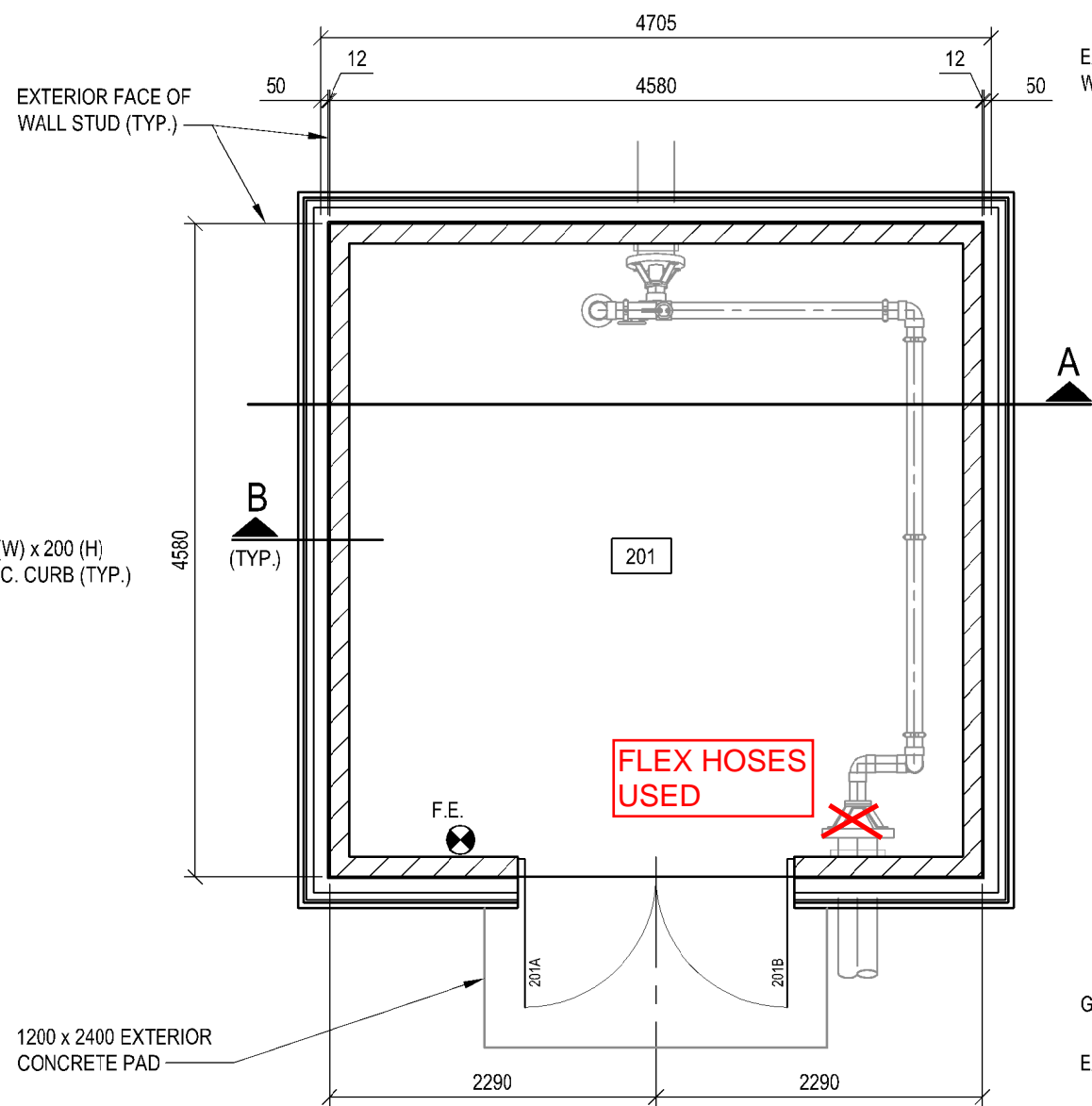
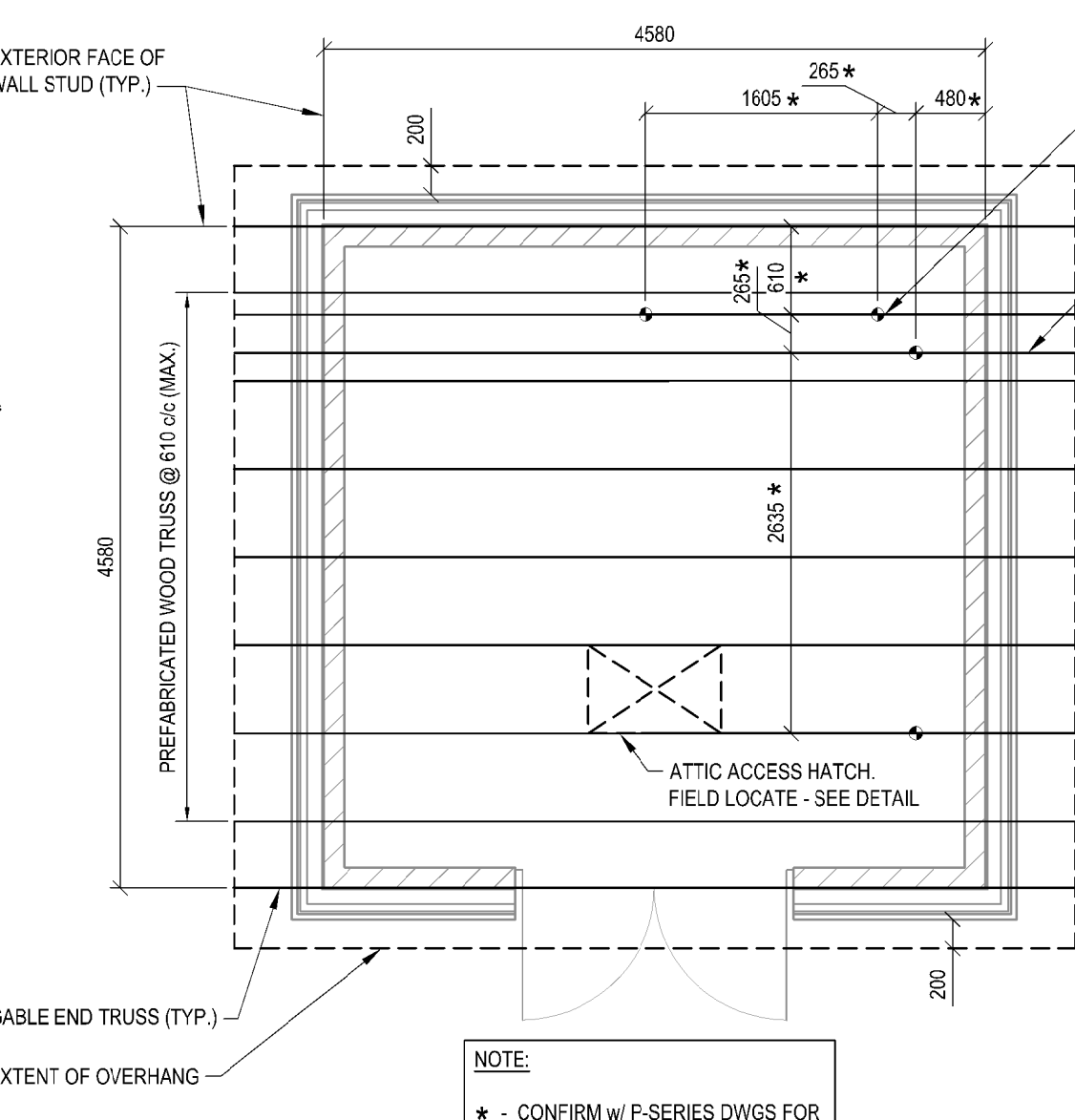


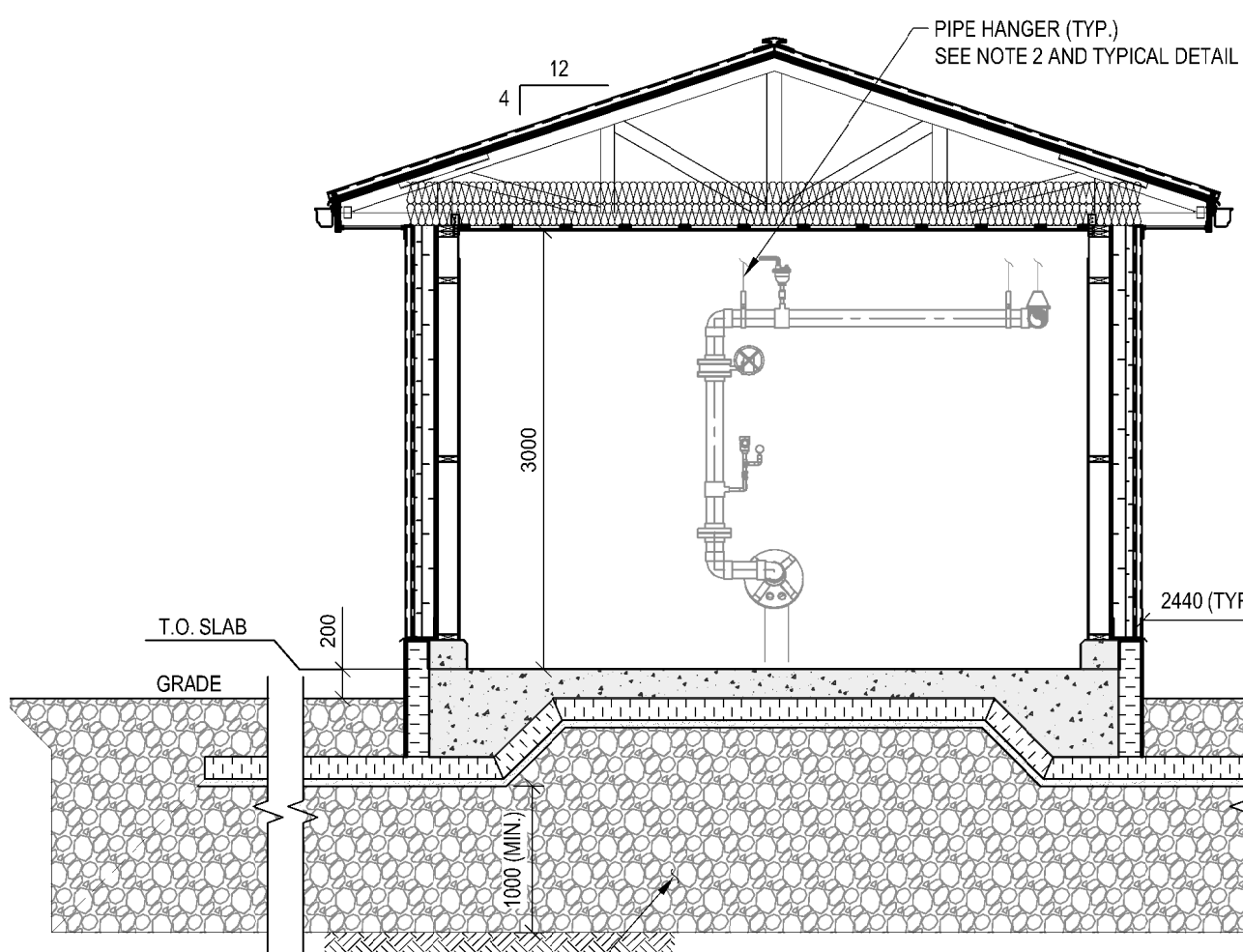
FOUNDATION PLAN  
1:50



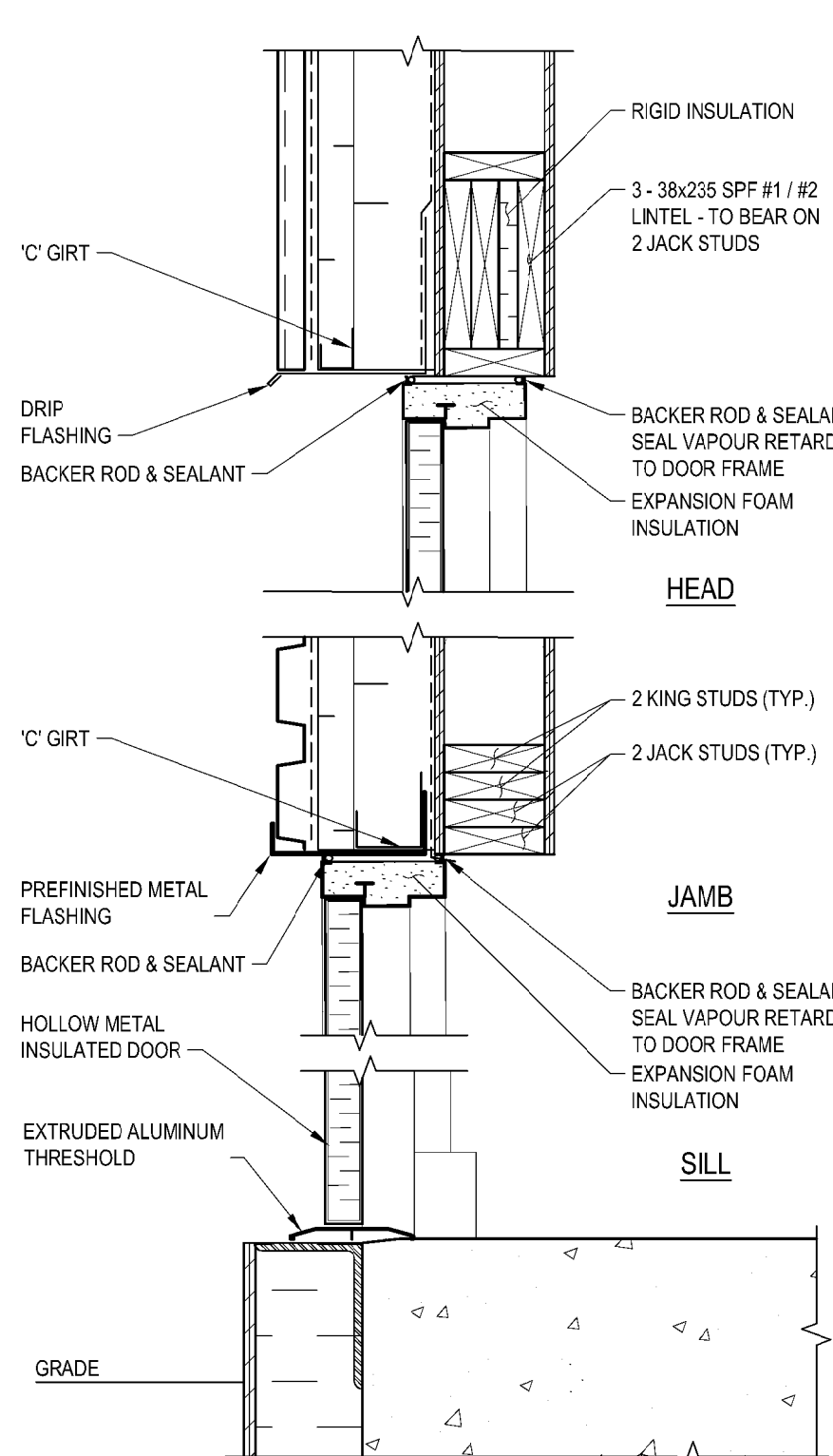
FLOOR PLAN  
1:50



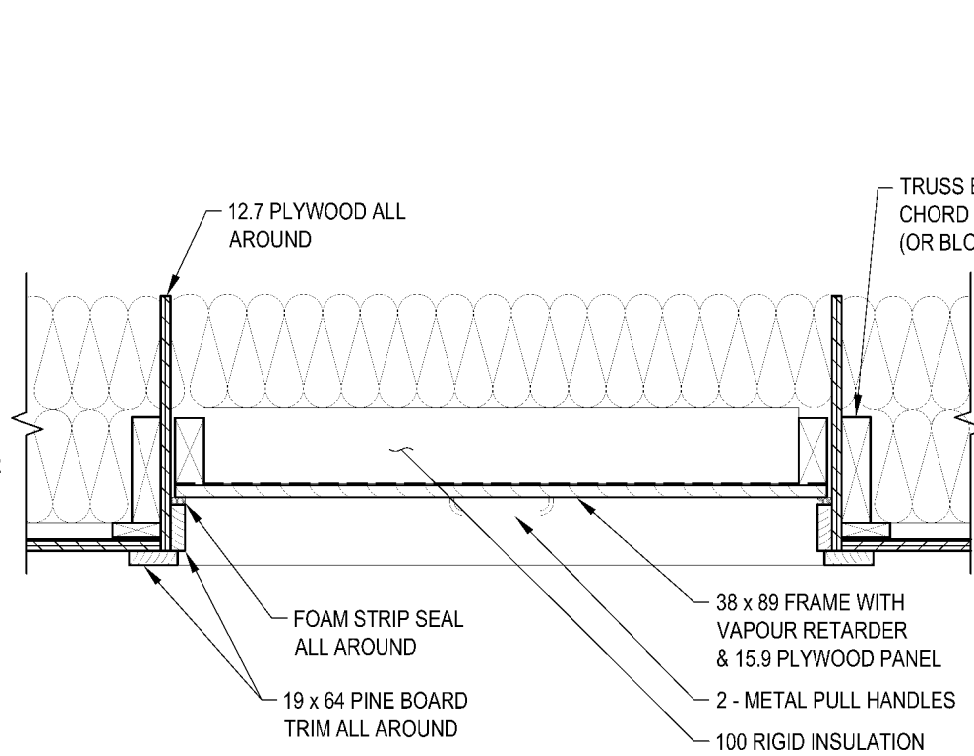
ROOF FRAMING PLAN  
1:50



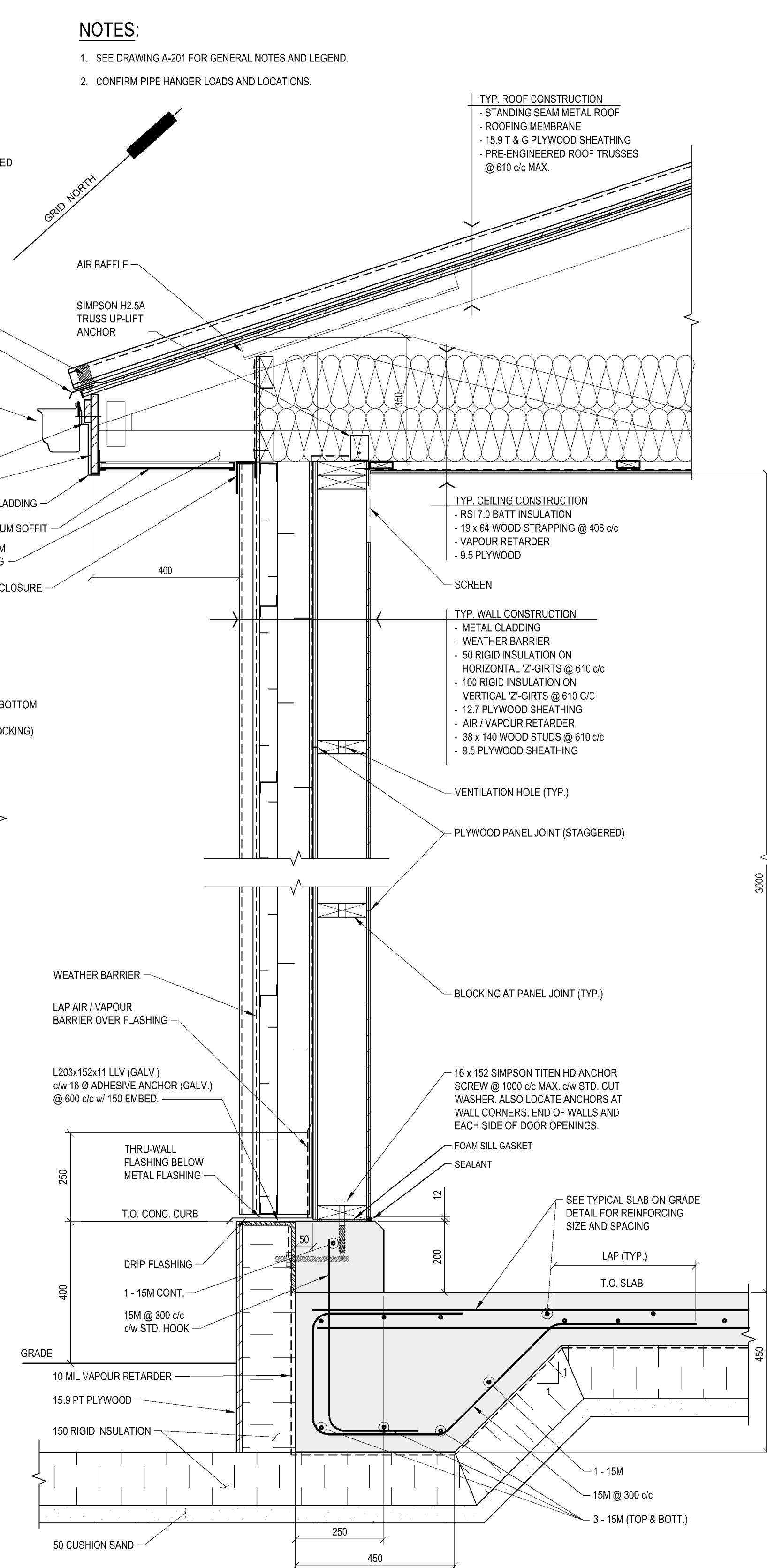
SECTION 'A'  
1:50



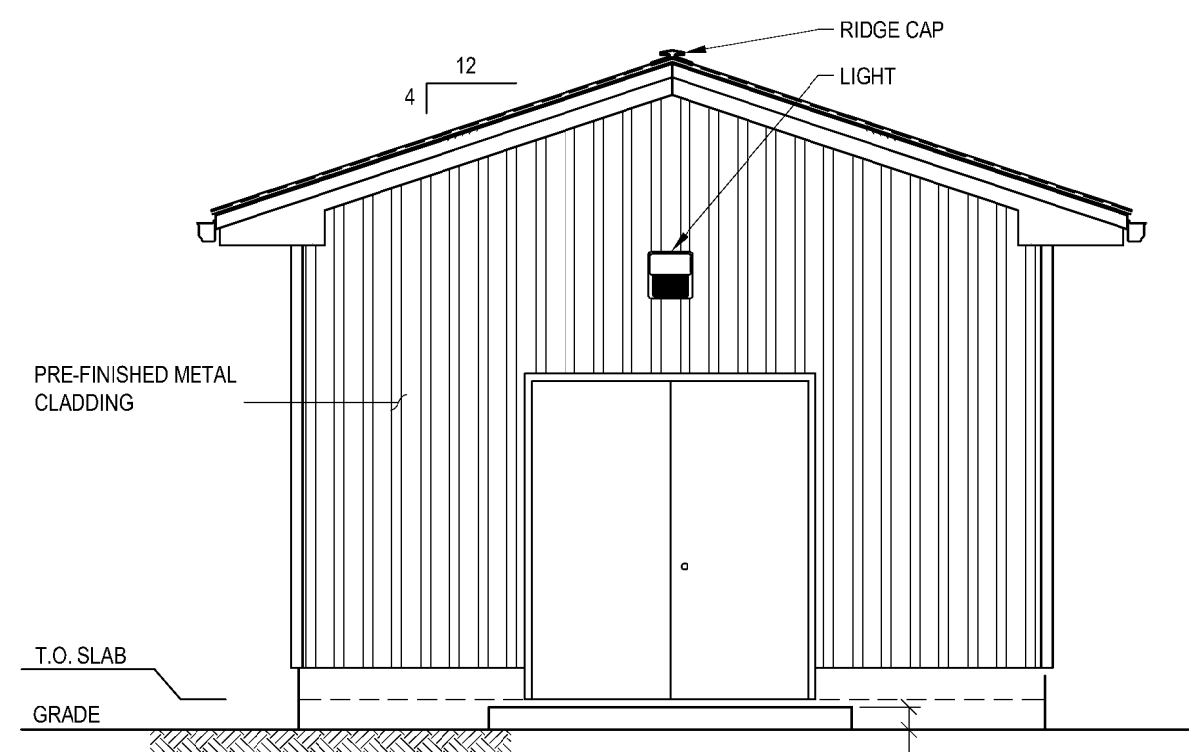
TYPICAL EXTERIOR DOOR DETAIL  
1:10



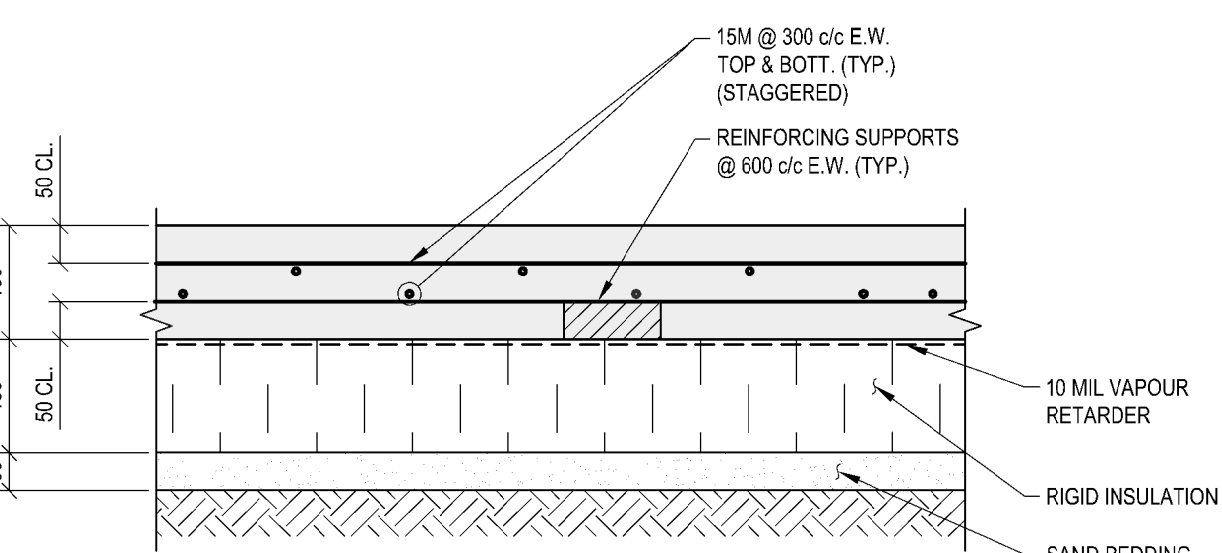
ATTIC ACCESS HATCH DETAIL  
1:10



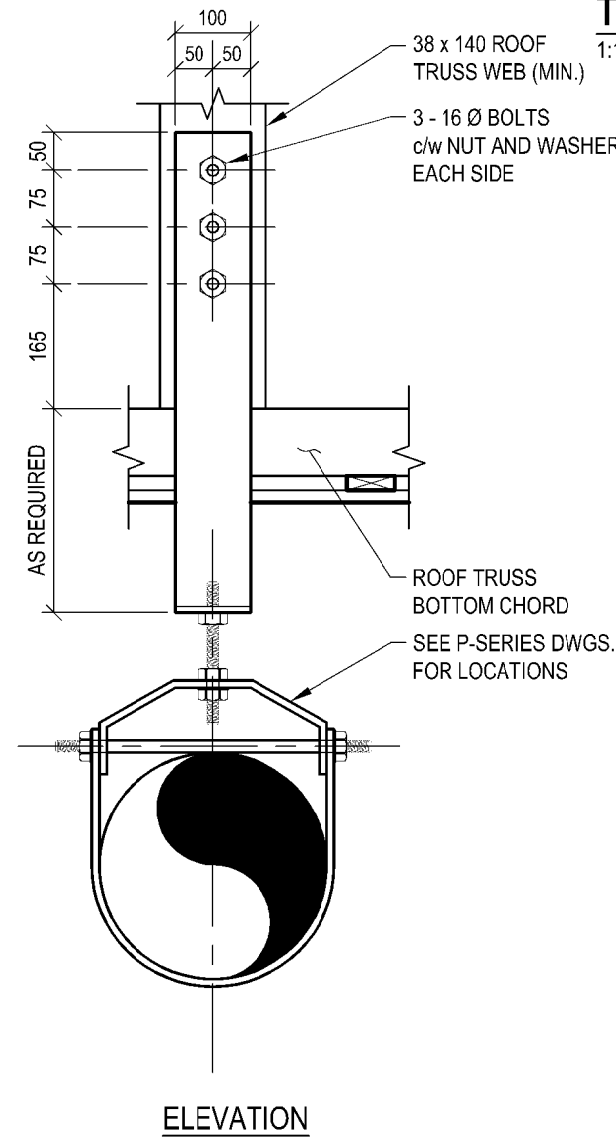
SECTION 'B'  
1:10



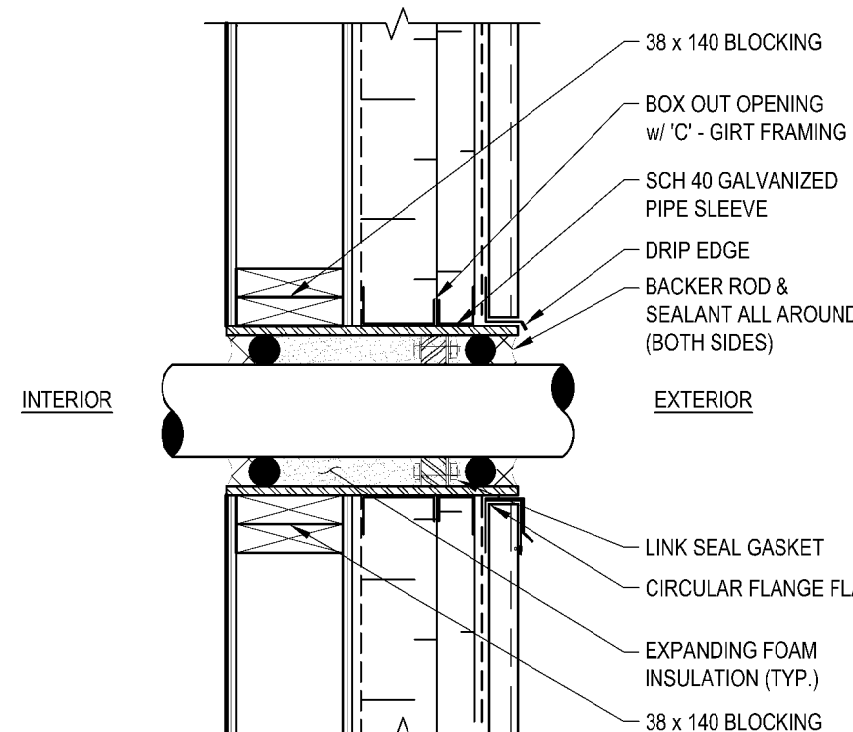
EAST ELEVATION  
1:50



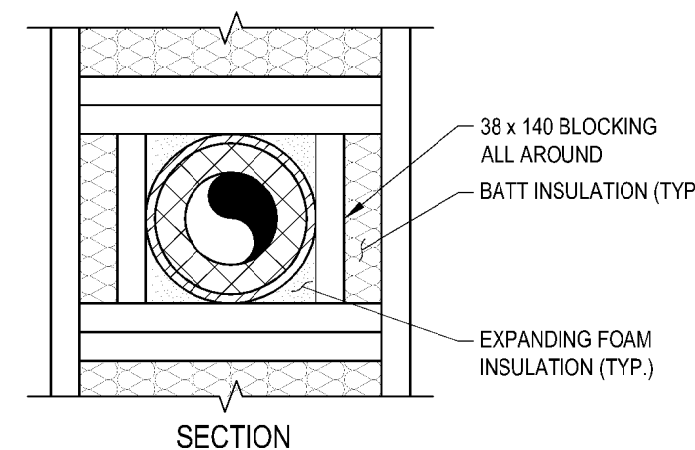
TYPICAL SLAB-ON-GRADE  
1:10



TYPICAL PIPE HANGER SUPPORT  
1:10



TYPICAL PIPE PENETRATION DETAIL  
1:10



TYPICAL EXTERIOR STEP DETAIL  
1:10

- NOTES:
- SEE DRAWING A-201 FOR GENERAL NOTES AND LEGEND.
  - CONFIRM PIPE HANGER LOADS AND LOCATIONS.

TYP. ROOF CONSTRUCTION  
- STANDING SEAM METAL ROOF  
- ROOFING MEMBRANE  
- 15.9 T & G PLYWOOD SHEATHING  
- PRE-ENGINEERED ROOF TRUSSES @ 610 c/c MAX.

TYP. CEILING CONSTRUCTION  
- RS 7.0 BATT INSULATION  
- 19 x 64 WOOD STRAPPING @ 406 c/c  
- VAPOUR RETARDER  
- 9.5 PLYWOOD

TYP. WALL CONSTRUCTION  
- METAL CLADDING  
- WEATHER BARRIER  
- 50 RIGID INSULATION ON HORIZONTAL 'Z'-GIRTS @ 610 c/c  
- 100 RIGID INSULATION ON VERTICAL 'Z'-GIRTS @ 610 c/c  
- 12.7 PLYWOOD SHEATHING  
- AIR / VAPOUR RETARDER  
- 38 x 140 WOOD STUDS @ 610 c/c  
- 9.5 PLYWOOD SHEATHING

VENTILATION HOLE (TYP.)

PLYWOOD PANEL JOINT (STAGGERED)

BLOCKING AT PANEL JOINT (TYP.)

WEATHER BARRIER

LAP AIR / VAPOUR BARRIER OVER FLASHING

16 x 152 SIMPSON TITEN HD ANCHOR SCREW @ 1000 c/c MAX. c/w STD. CUT WASHER, ALSO LOCATE ANCHORS AT WALL CORNERS, END OF WALLS AND EACH SIDE OF DOOR OPENINGS.

FOAM SILL GASKET

SEALANT

SEE TYPICAL SLAB-ON-GRADE DETAIL FOR REINFORCING SIZE AND SPACING

LAP (TYP.)

T.O. SLAB

1 - 15M

15M @ 300 c/c

3 - 15M (TOP & BOTT.)

15M @ 300 c/c E.W. TOP & BOTT. (TYP.) (STAGGERED)

REINFORCING SUPPORTS @ 600 c/c E.W. (TYP.)

10 MIL VAPOUR RETARDER

50 CUSHION SAND

GRADE

15M @ 300 c/c E.W. TOP & BOTT. (TYP.) (STAGGERED)

REINFORCING SUPPORTS @ 600 c/c E.W. (TYP.)

10 MIL VAPOUR RETARDER

GRADE

15M @ 300 c/c E.W. TOP & BOTT. (TYP.) (STAGGERED)

REINFORCING SUPPORTS @ 600 c/c E.W. (TYP.)

10 MIL VAPOUR RETARDER

GRADE

15M @ 300 c/c E.W. TOP & BOTT. (TYP.) (STAGGERED)

REINFORCING SUPPORTS @ 600 c/c E.W. (TYP.)

10 MIL VAPOUR RETARDER

GRADE

exp Services Inc.  
T: +1 613 888 1899 F: +1 613 225 7330  
2650 Queensview Drive, Unit 100  
Ottawa, ON, K2B 8H6  
CANADA  
www.exp.com



• BUILDINGS • EARTH & ENVIRONMENT • ENERGY •  
• INDUSTRIAL • INFRASTRUCTURE • SUSTAINABILITY •

CAUTION: DO NOT SCALE DRAWINGS.  
THIS REPRODUCTION MAY BE AT A SIZE DIFFERENT THAN ORIGINALLY DRAWN. EXP ASSUMES NO RESPONSIBILITY FOR INCORRECT SCALES. UNAUTHORIZED REPRODUCTION OR REUSE IS STRICTLY PROHIBITED. NOT PUBLISHED - ALL RIGHTS RESERVED. EXP EXPRESSLY DISCLAIMS RESPONSIBILITY ARISING FROM UNAUTHORIZED USE OF THESE DRAWINGS AND NOTES. AUTHORIZATION MUST BE IN WRITING.

© exp. 2017

No.	Issue	Date

exp Services Inc.  
T: +1 508 452 9000 F: +1 508 459 3954  
1133 Regent Street, Suite 300  
Fredericton, NB, E3B 3Z2  
CANADA  
www.exp.com



• BUILDINGS • EARTH & ENVIRONMENT • ENERGY •  
• INDUSTRIAL • INFRASTRUCTURE • SUSTAINABILITY •



No.	Revision	Date
1	RELEASED FOR CONSTRUCTION	2017 AUG 30

RELEASED FOR CONSTRUCTION

Professional Seal(s)



Drawn By:	ECM
Dwg Standards Ckd By:	<i>[Signature]</i>
Designed By:	MJM
Design Checked By:	<i>[Signature]</i>
Scale:	AS SHOWN

Project Title  
**WATER TREATMENT FACILITY AND RAW WATER STORAGE ARVIAT, NU**

Dwg. Title  
**AS BUILT DRAWINGS: THIS DRAWING HAS BEEN REVISED TO SHOW PUMPHOUSE 2 WORK AS INSTALLED**  
Tower Arctic Ltd. - 5/12/2020

Project No. **OTT-00236239-A0**

Dwg. No. **A-206** Rev. No. **1**

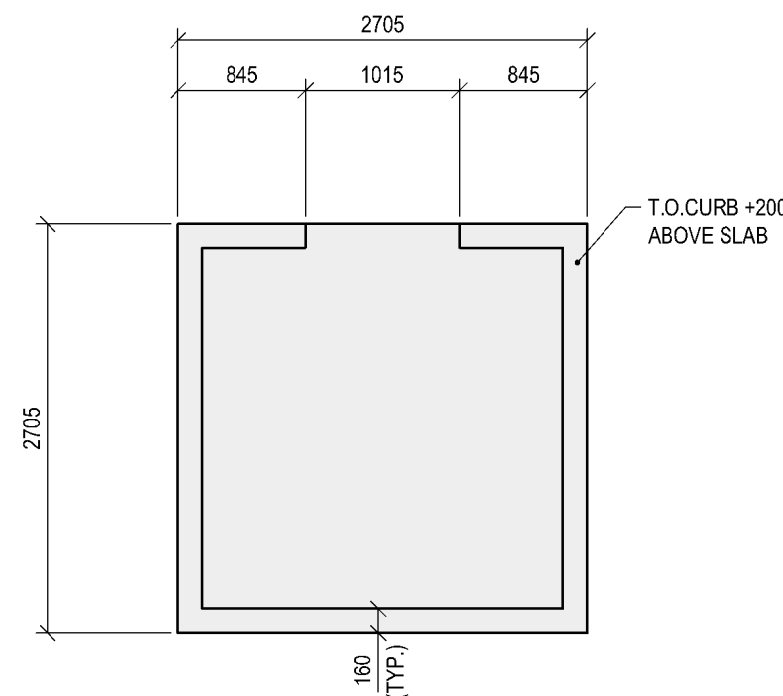
PERMIT OF PRACTICE  
EXP SERVICES INC.  
Signature *[Signature]*  
Date *30/AUG/2017*  
PERMIT NUMBER: P483  
NT/NU Association of Professional Engineers and Geoscientists



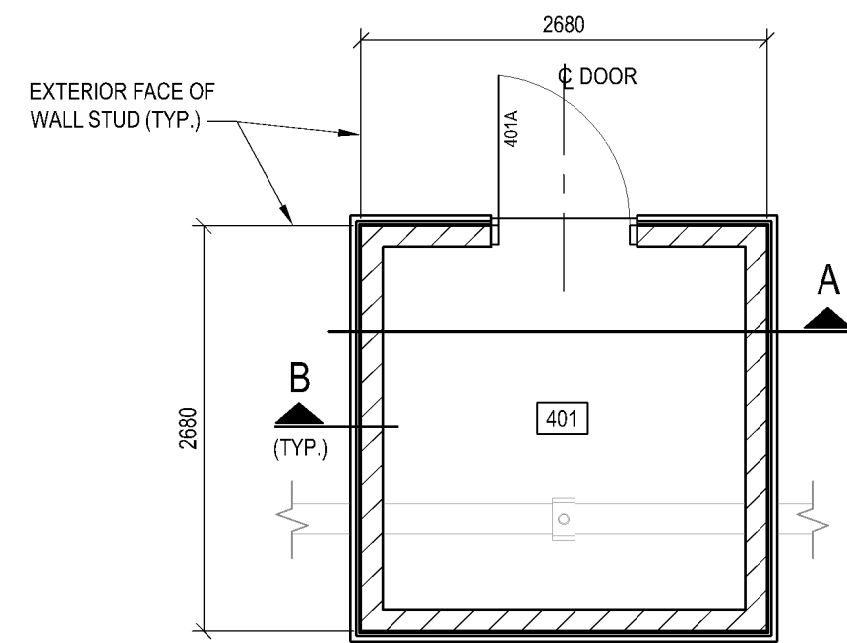




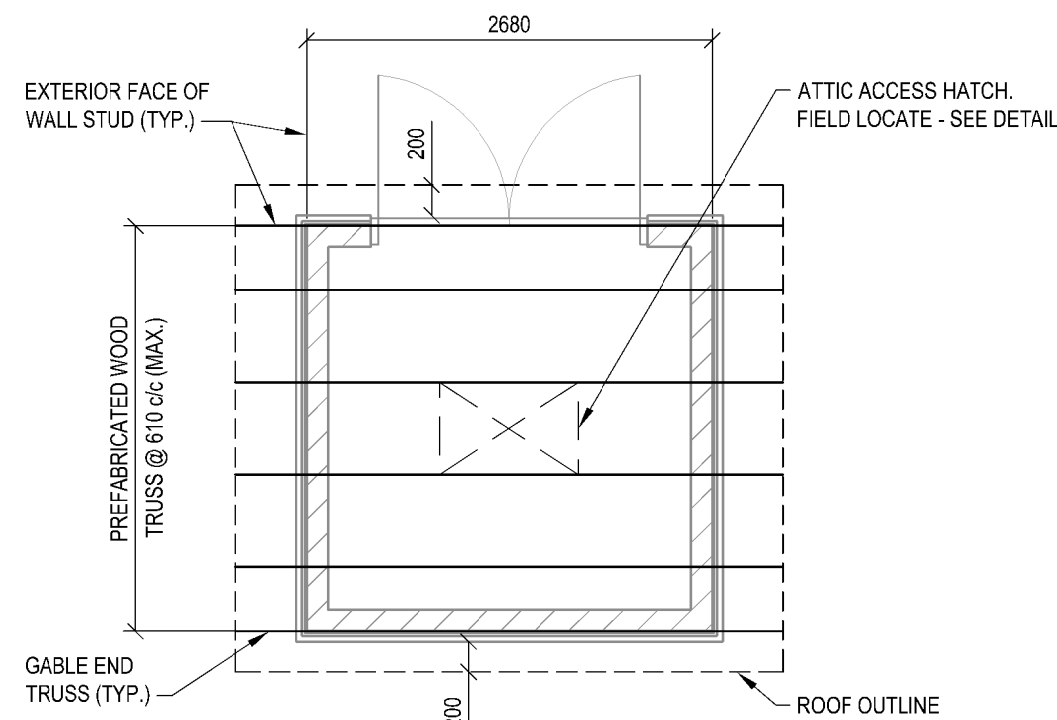
GRID NORTH



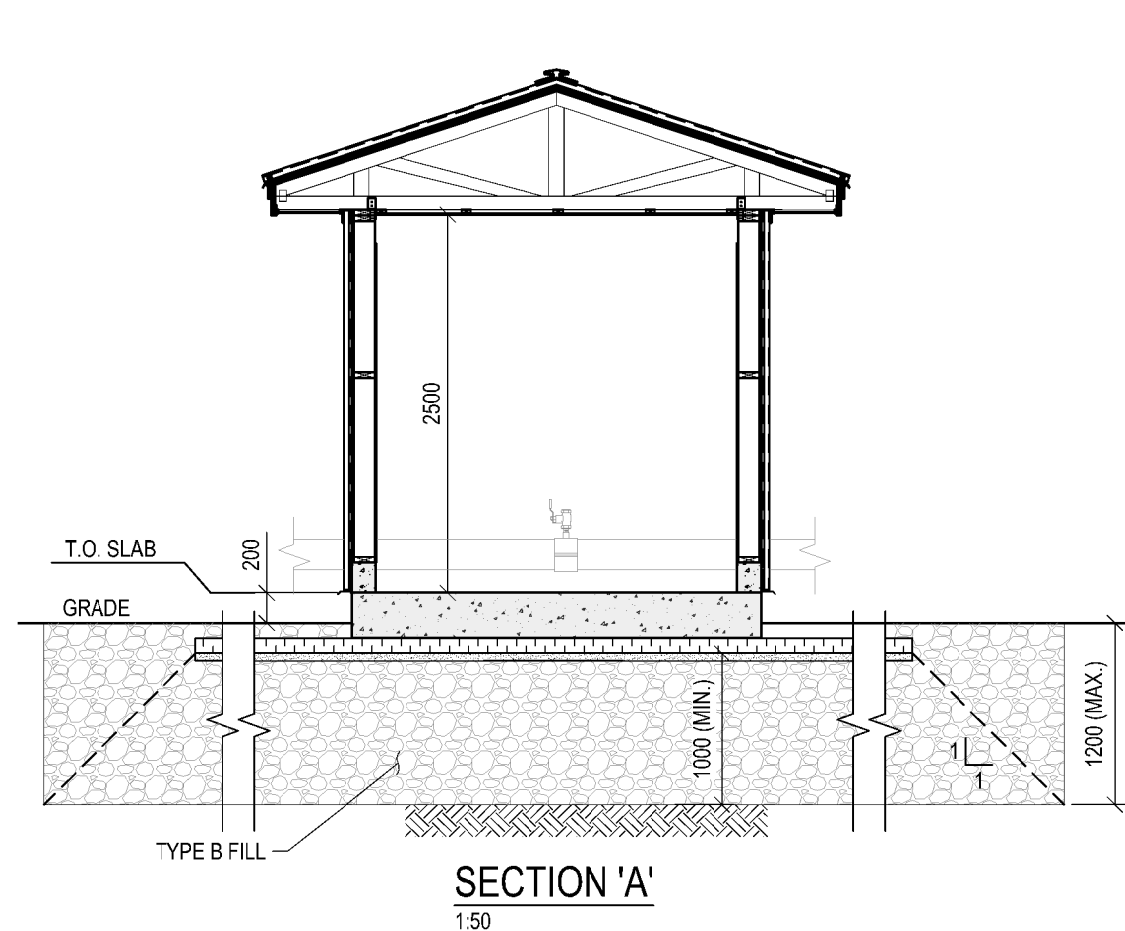
**FOUNDATION PLAN**  
1:50



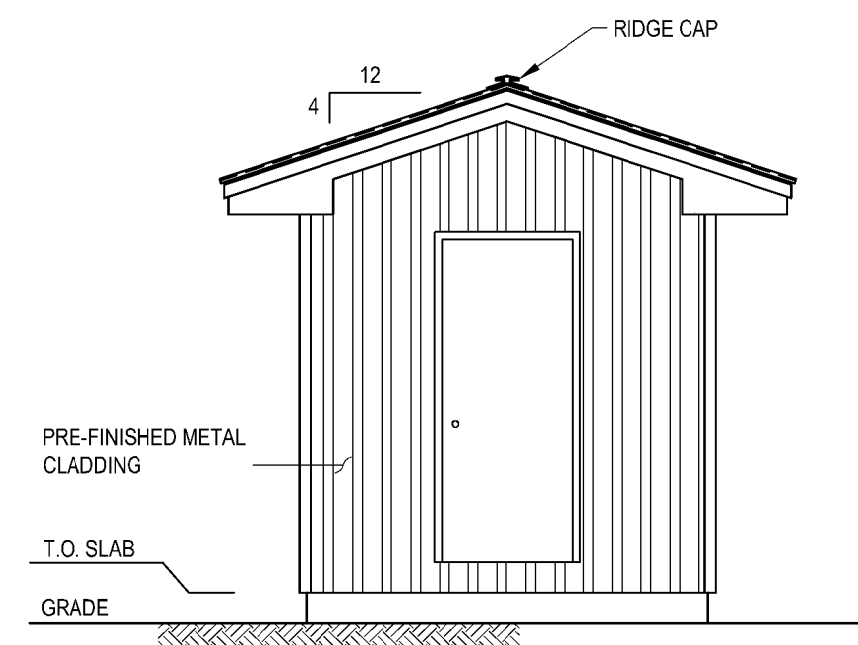
**FLOOR PLAN**  
1:50



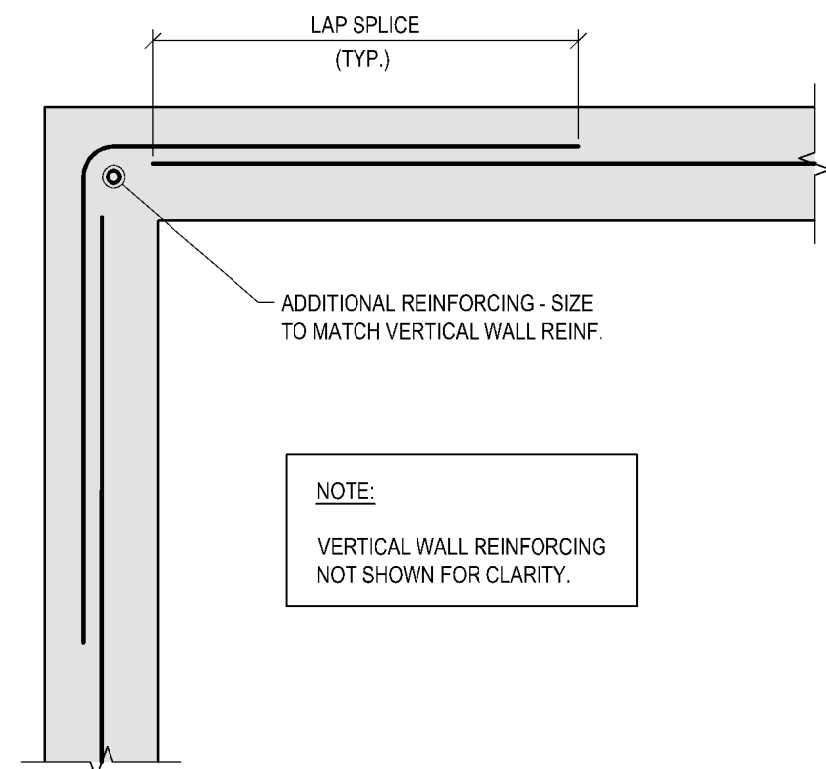
**ROOF FRAMING PLAN**  
1:50



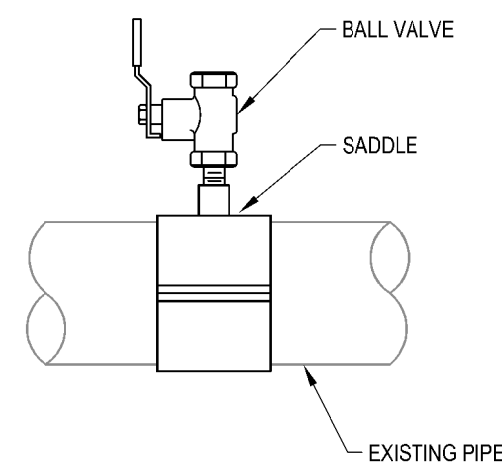
**SECTION 'A'**  
1:50



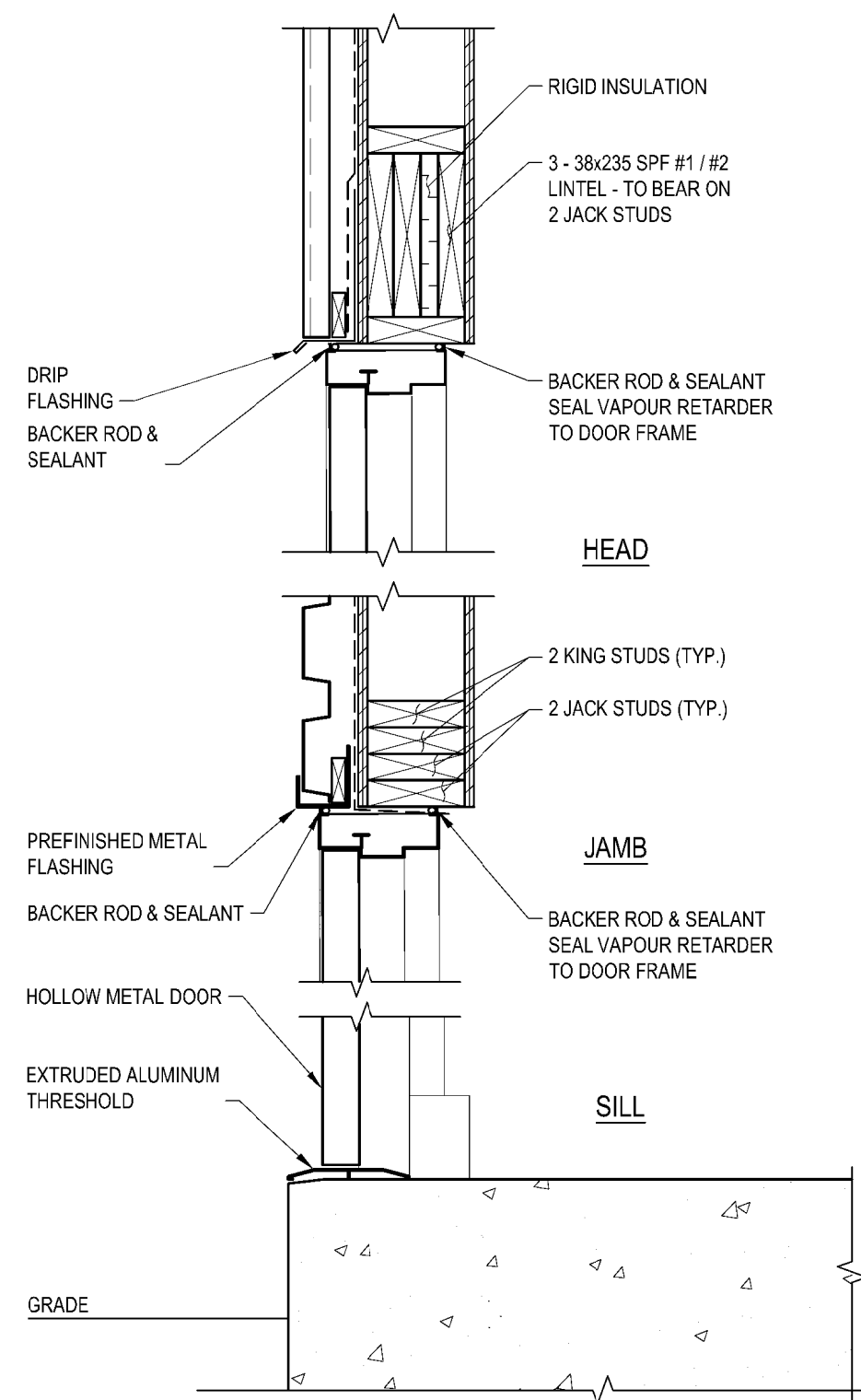
**SOUTH ELEVATION**  
1:50



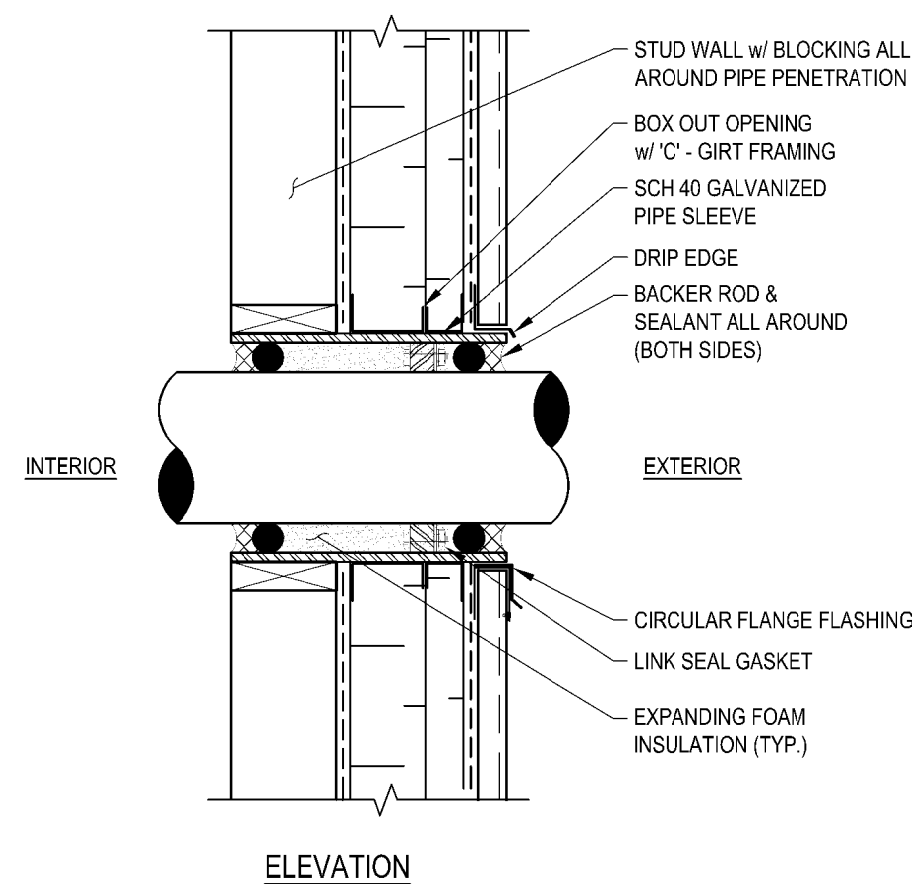
**TYPICAL CURB CORNER DETAIL**  
1:10



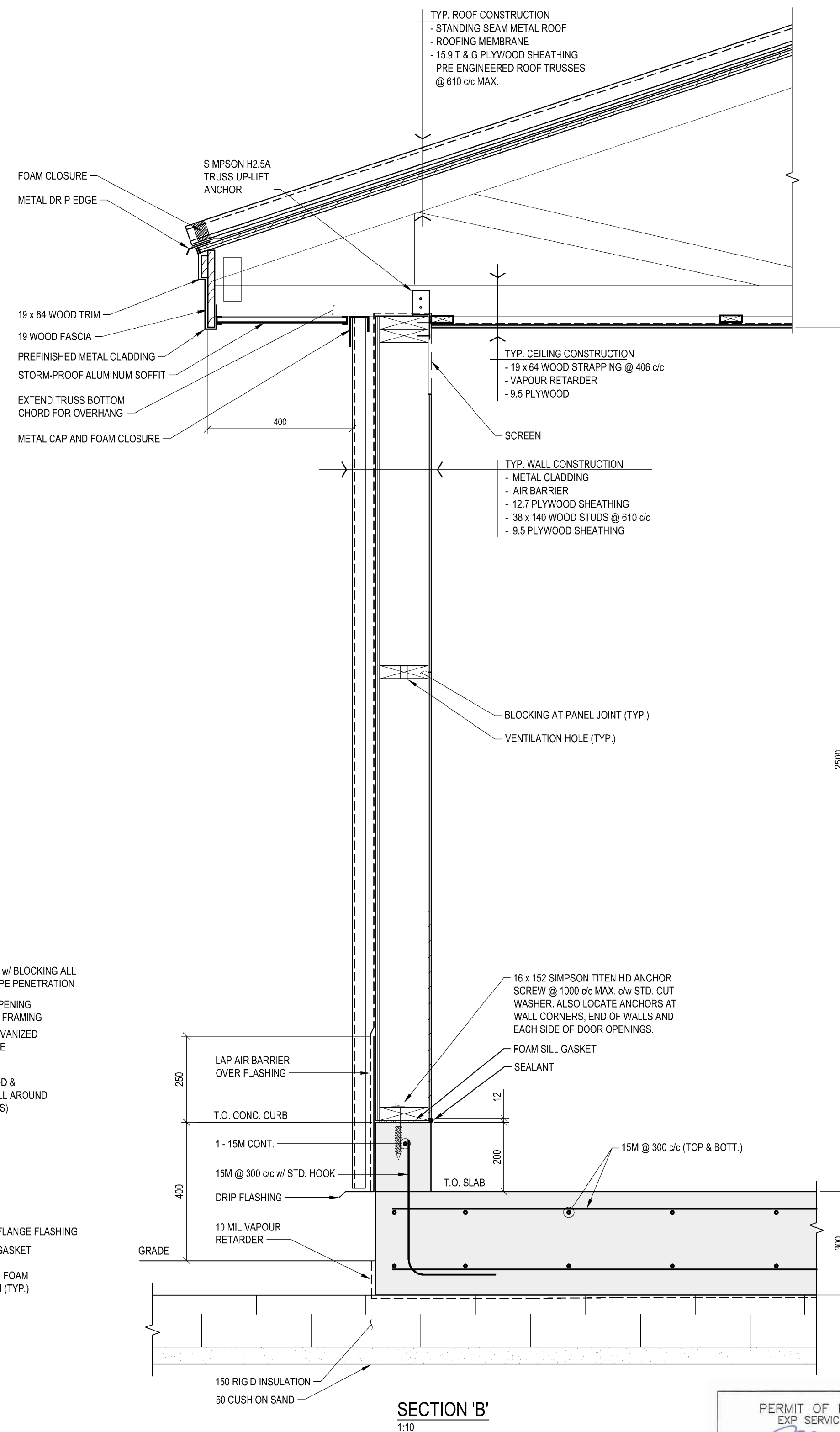
**FLUORIDE INJECTION DETAIL**  
1:10



**TYPICAL EXTERIOR DOOR DETAIL**  
1:10



**TYPICAL PIPE PENETRATION DETAIL**  
NOT TO SCALE



**SECTION 'B'**  
1:10

## NOTE:

1. SEE DRAWING A-201 FOR GENERAL NOTES AND LEGEND.



exp Services Inc.

T: +1 613 888-1899 | F: +1 613 225 7330  
2650 Queensview Drive, Unit 100  
Ottawa, ON, K2B 8H6  
CANADA

www.exp.com



• BUILDINGS • EARTH & ENVIRONMENT • ENERGY •  
• INDUSTRIAL • INFRASTRUCTURE • SUSTAINABILITY •

CAUTION: DO NOT SCALE DRAWINGS.  
THIS REPRODUCTION MAY BE AT A SIZE DIFFERENT THAN ORIGINALLY DRAWN. EXP ASSUMES NO RESPONSIBILITY FOR INCORRECT SCALES. UNAUTHORIZED REPRODUCTION OR REUSE IS STRICTLY PROHIBITED. NOT PUBLISHED - ALL RIGHTS RESERVED. EXP EXPRESSLY DISCLAIMS RESPONSIBILITY ARISING FROM UNAUTHORIZED USE OF THESE DRAWINGS AND NOTES. AUTHORIZATION MUST BE IN WRITING.

© exp. 2017

No.	Issue	Date

exp Services Inc.

T: +1 508 452 9000 | F: +1 508 459 3954  
1133 Regent Street, Suite 300  
Fredericton, NB, E3B 3Z2  
CANADA

www.exp.com



• BUILDINGS • EARTH & ENVIRONMENT • ENERGY •  
• INDUSTRIAL • INFRASTRUCTURE • SUSTAINABILITY •



TOWER ARCTIC LTD., AS BUILT  
RELEASED FOR CONSTRUCTION

2020 MAY 12

2017 AUG 30

No. Revision Date

RELEASED FOR CONSTRUCTION

Professional Seal(s)



Drawn By: ECM  
Dwg Standards Ckd By: *[Signature]*  
Designed By: MJM  
Design Checked By: *[Signature]*  
Scale: AS SHOWN

Project Title  
**WATER TREATMENT  
FACILITY AND  
RAW WATER STORAGE  
ARVIAT, NU**

Dwg. Title  
**AS BUILT DRAWINGS: THIS  
DRAWING HAS BEEN REVISED TO  
SHOW SEASONAL CONDITIONING  
BUILDING WORK AS INSTALLED  
Tower Arctic Ltd. 5/12/2020**

Project No. **OTT-00236239-A0**

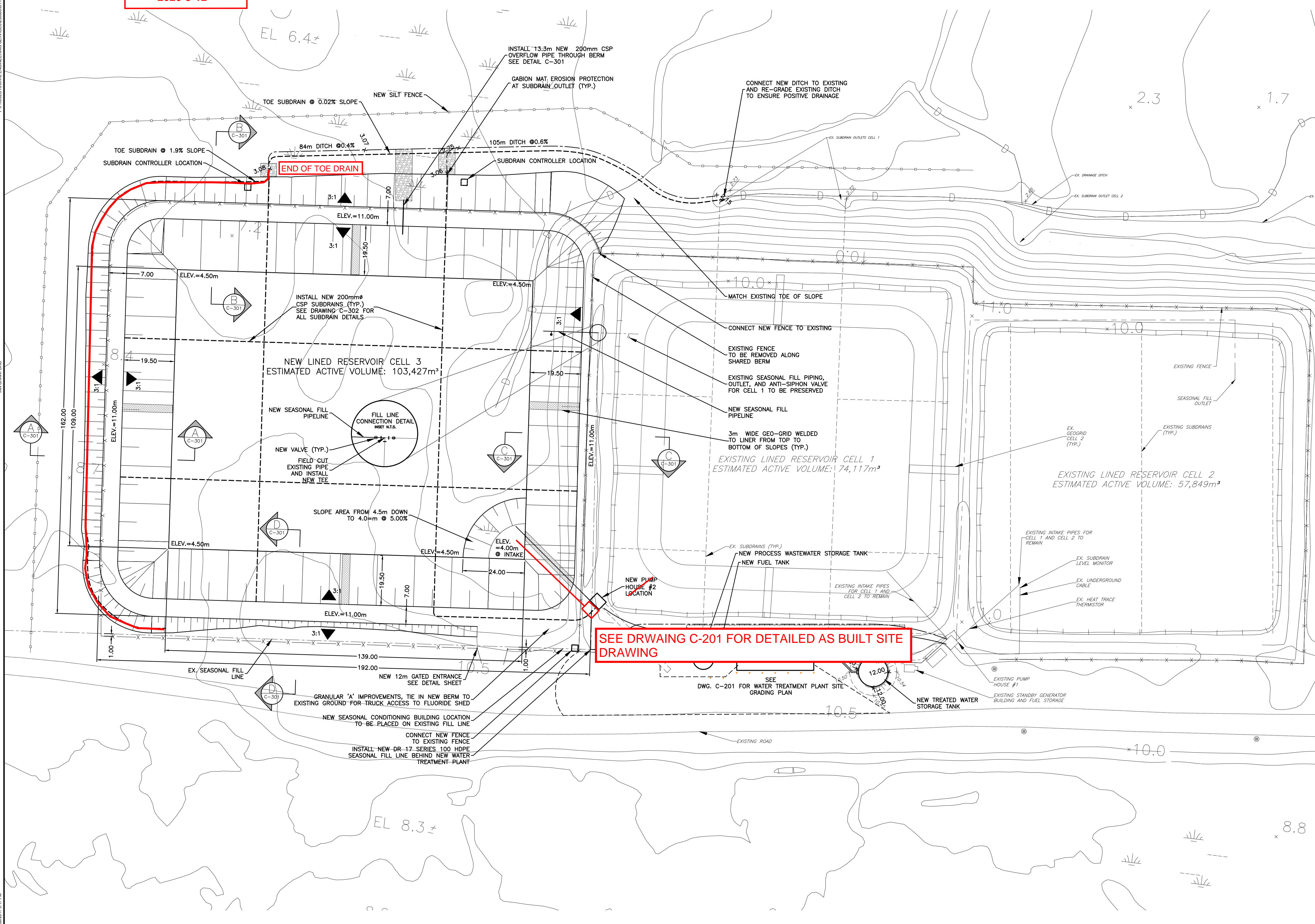
Dwg. No. **A-208** Rev. No. **1**

PERMIT OF PRACTICE  
EXP SERVICES INC.  
Signature *[Signature]*  
Date *30/AUG/2017*  
PERMIT NUMBER: P483  
NT/NU Association of Professional  
Engineers and Geoscientists





**RECORD DRAWING**  
**2020-5-12**



## GENERAL NOTES

1. THE PREPARED FOOTPRINT OF THE NEW CELL NO. 3 TO EXTEND AT LEAST 2m BEYOND THE TOE OF THE NEW SLOPES.
2. THE EXPANDED FOOTPRINT SHOULD BE STRIPPED OF ANY EXISTING SURFICIAL ORGANIC/PEAT LAYER AND/OR ANY OTHER SOFT SATURATED MATERIALS ENCOUNTERED AS PER THE RECOMMENDATIONS OF THE GEOTECHNICAL REPORT.

**exp Services Inc.**  
t: +1.613.688.1899 | f: +1.613.225.7330  
2650 Queensview Drive, Unit 100  
Ottawa, ON, K2B 8H6  
CANADA  
[www.exp.com](http://www.exp.com)



• BUILDINGS • EARTH & ENVIRONMENT • ENERGY •  
• INDUSTRIAL • INFRASTRUCTURE • SUSTAINABILITY

CAUTION: DO NOT SCALE DRAWINGS.  
THIS REPRODUCTION MAY BE AT A SIZE DIFFERENT THAN ORIGINALLY DRAWN. EXP ASSUMES  
NO RESPONSIBILITY FOR INCORRECT SCALING. UNAUTHORIZED REPRODUCTION OR REUSE IS  
STRICTLY PROHIBITED. NOT PUBLISHED - ALL RIGHTS RESERVED. EXP EXPRESSLY DISCLAIMS  
RESPONSIBILITY ARISING FROM UNAUTHORIZED USE OF THESE DRAWINGS AND NOTES.  
AUTHORIZATION MUST BE IN WRITING

© exp. 2017

[illegible]

**exp Services Inc.**  
t: +1.506.452.9000 | f: +1.506.459.3954  
1133 Regent Street, Suite 300  
Fredericton, NB, E3B 3Z2  
CANADA



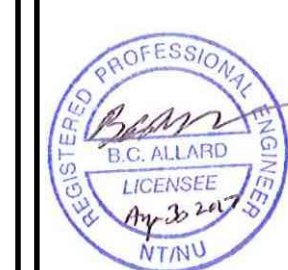
• BUILDINGS • EARTH & ENVIRONMENT • ENERGY •  
• INDUSTRIAL • INFRASTRUCTURE • SUSTAINABILITY



	TOWER ARCTIC LTD. AS BUILTS	2020.MAY
1	RELEASED FOR CONSTRUCTION	2017.AUG.
No.	Revision	Date

RELEASED FOR CONSTRUCTION

Professional Seal(s)



PERMIT OF PRACTICE  
EXP SERVICES INC.  
Signature E. [Signature]  
Date Aug 30 2017  
PERMIT NUMBER: P483  
NT/NU Association of Professional  
Engineers and Geoscientists

Drawn By: IPC

Dwg Standards Ckd By: STWD

Designed By:	SLB
--------------	-----

Design Checked By: *EAC*

Scale: 1:750

Project Title
---------------

WATER TREATMENT  
FACILITY AND  
RAW WATER STORAGE  
ARVIAT, NU

Dwg. Title

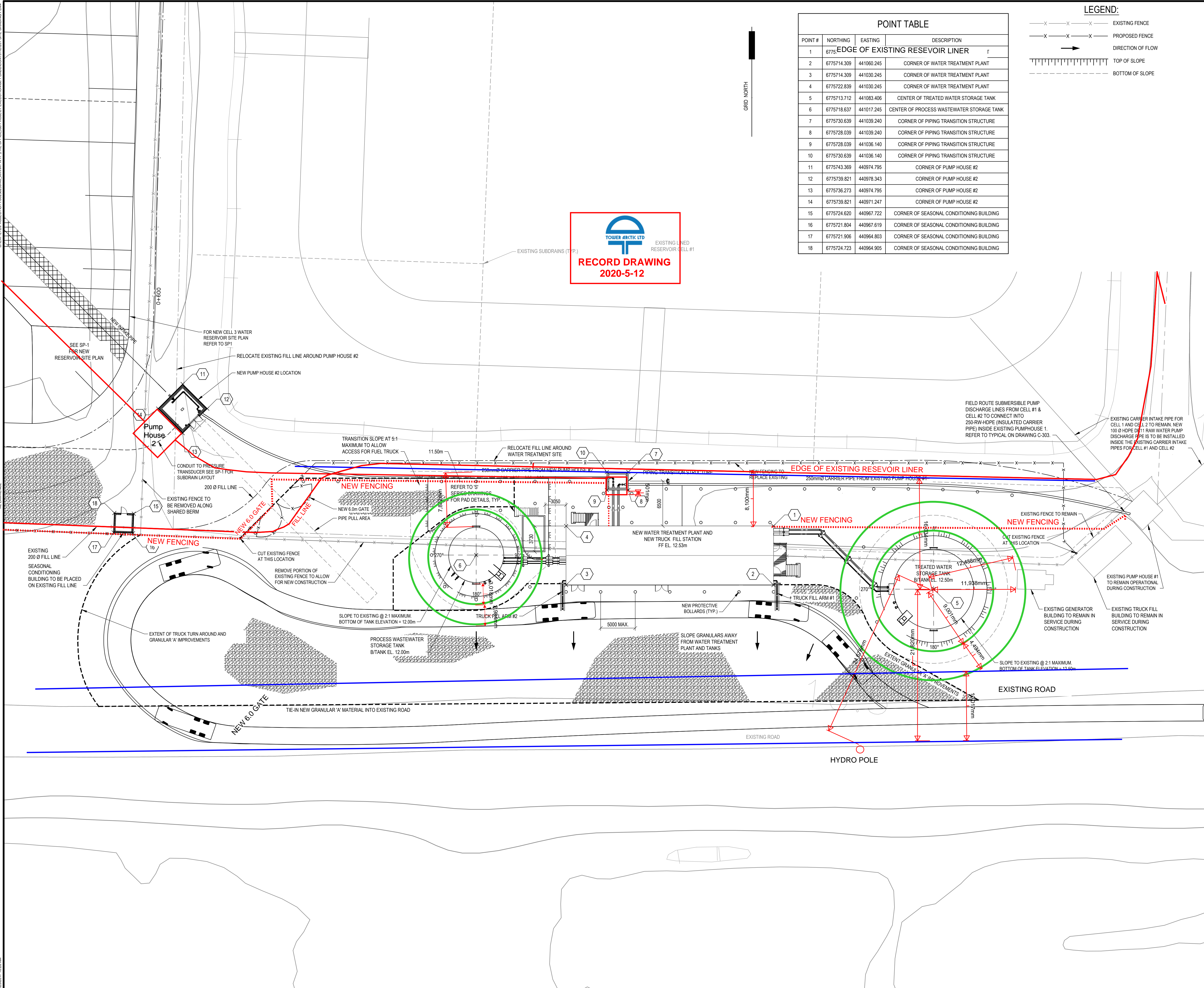
AS BUILT DRAWINGS: THIS  
DRAWING HAS BEEN REVISED TO  
SHOW SITE WORK AS INSTALLED  
Tower Arctic Ltd. - 5/12/2020

Project No. OTT-00236239-A0

Dwg. No. **C-103**

Rev. No. 1





POINT TABLE			
POINT #	NORTHING	EASTING	DESCRIPTION
1	677575.4	401060.245	CORNER OF WATER TREATMENT PLANT
2	6775714.309	401030.245	CORNER OF WATER TREATMENT PLANT
3	6775722.839	401030.245	CORNER OF WATER TREATMENT PLANT
4	6775713.712	401083.406	CENTER OF TREATED WATER STORAGE TANK
5	6775718.637	401017.245	CENTER OF PROCESS WASTEWATER STORAGE TANK
6	6775730.639	401039.240	CORNER OF PIPING TRANSITION STRUCTURE
7	6775728.039	401039.240	CORNER OF PIPING TRANSITION STRUCTURE
8	6775728.039	401036.140	CORNER OF PIPING TRANSITION STRUCTURE
9	6775730.639	401036.140	CORNER OF PIPING TRANSITION STRUCTURE
10	6775743.369	400974.795	CORNER OF PUMP HOUSE #2
11	6775739.821	400978.343	CORNER OF PUMP HOUSE #2
12	6775736.273	400974.795	CORNER OF PUMP HOUSE #2
13	6775739.821	400971.247	CORNER OF PUMP HOUSE #2
14	6775724.620	400967.722	CORNER OF SEASONAL CONDITIONING BUILDING
15	6775721.804	400967.619	CORNER OF SEASONAL CONDITIONING BUILDING
16	6775721.906	400964.803	CORNER OF SEASONAL CONDITIONING BUILDING
17	6775724.723	400964.905	CORNER OF SEASONAL CONDITIONING BUILDING

**LEGEND:**

—X—X—X— EXISTING FENCE

—X—X—X— PROPOSED FENCE

➔ DIRECTION OF FLOW

||||| TOP OF SLOPE

----- BOTTOM OF SLOPE

**exp Services Inc.**  
t: +1.613.688.1899 | f: +1.613.225.7330  
2650 Queensview Drive, Unit 100  
Ottawa, ON, K2B 8H6  
CANADA

[www.exp.com](http://www.exp.com)



• BUILDINGS • EARTH & ENVIRONMENT • ENERGY •  
• INDUSTRIAL • INFRASTRUCTURE • SUSTAINABILITY •

CAUTION: DO NOT SCALE DRAWINGS.  
THIS REPRODUCTION MAY BE AT A SIZE DIFFERENT THAN ORIGINALLY DRAWN. EXP ASSUMES  
NO RESPONSIBILITY FOR INCORRECT SCALING. UNAUTHORIZED REPRODUCTION OR REUSE IS  
STRICTLY PROHIBITED. NOT PUBLISHED - ALL RIGHTS RESERVED. EXP EXPRESSLY DISCLAIMS  
RESPONSIBILITY ARISING FROM UNAUTHORIZED USE OF THESE DRAWINGS AND NOTES.  
AUTHORIZATION MUST BE IN WRITING.

© exp 2017

No.	Issue	Date

**exp Services Inc.**  
t: +1.506.452.9000 | f: +1.506.459.3954  
1133 Regent Street, Suite 300  
Fredericton, NB, E3B 3Z2  
CANADA

**www.exp.com**



• BUILDINGS • EARTH & ENVIRONMENT • ENERGY •  
• INDUSTRIAL • INFRASTRUCTURE • SUSTAINABILITY •



	TOWER ARCTIC LTD. AS BUILTS	2020.MAY.1
1	RELEASED FOR CONSTRUCTION	2017.AUG.30
No.	Revision	Date

**RELEASED FOR CONSTRUCTION**

Professional Seal(s)



PERMIT OF PRACTICE  
EXP SERVICES INC.  
Signature *E. E. E.*  
Date Aug 30 2017  
PERMIT NUMBER: P483  
NT/NU Association of Professional  
Engineers and Geoscientists

Drawn By:	ARL
Dwg Standards Ckd By:	PD
Designed By:	BCA
Design Checked By:	EAB
Scale:	1:250

WATER TREATMENT  
FACILITY AND  
RAW WATER STORAGE  
ARVIAT, NU

Dwg. Title

AS BUILT DRAWINGS: THIS  
DRAWING HAS BEEN REVISED TO  
SHOW SITE WORK AS INSTALLED  
Tower Arctic Ltd. - 5/12/2020

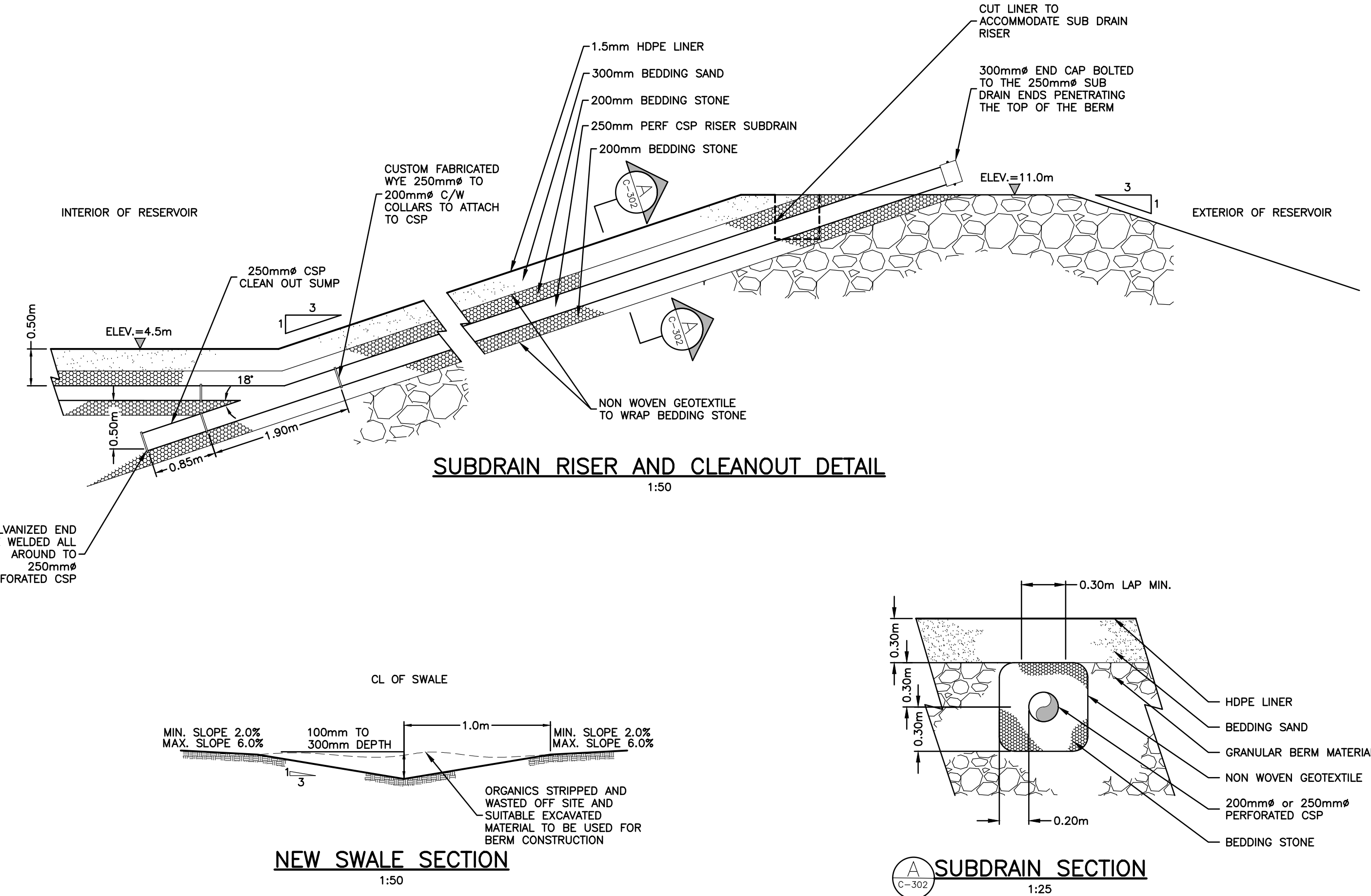
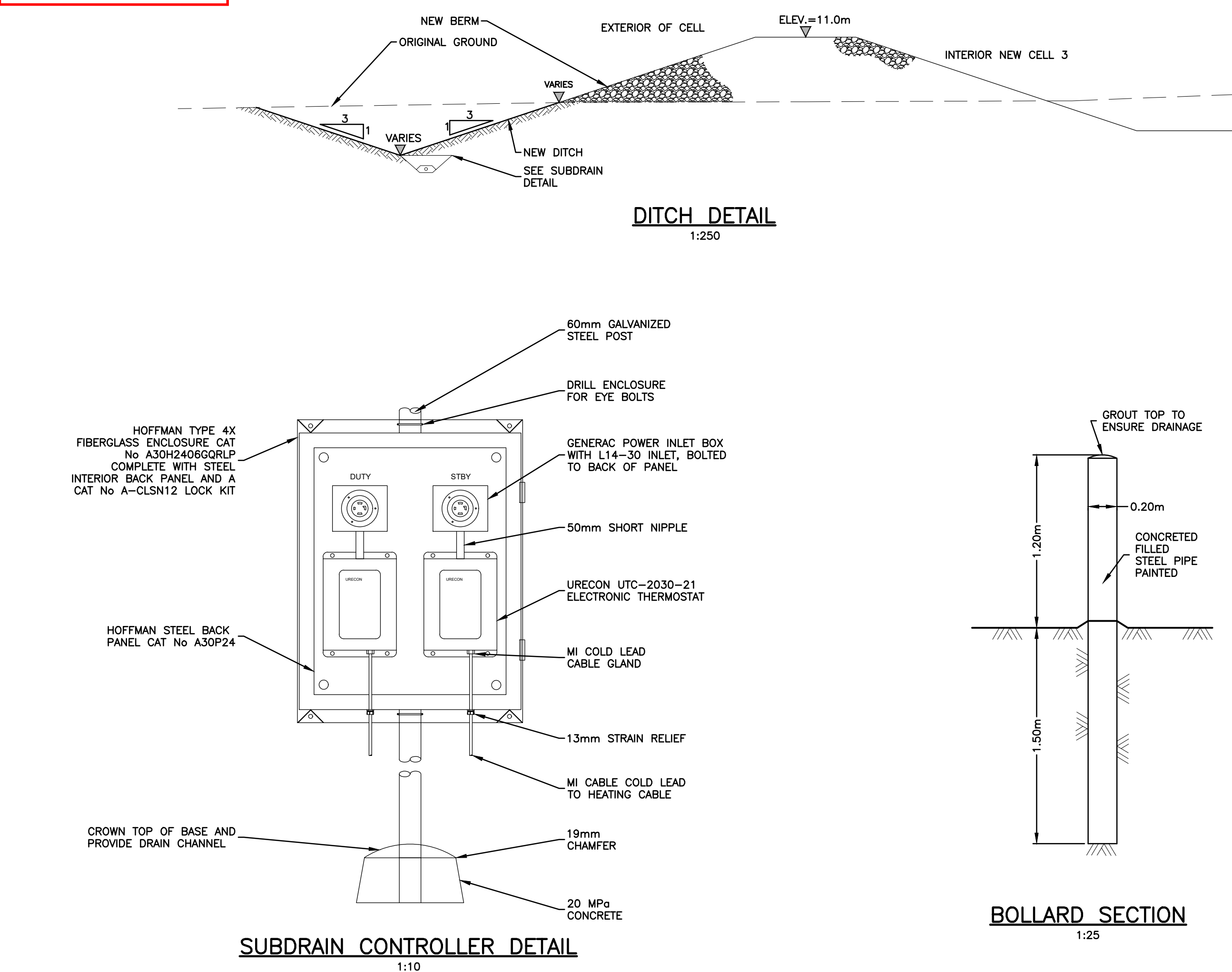
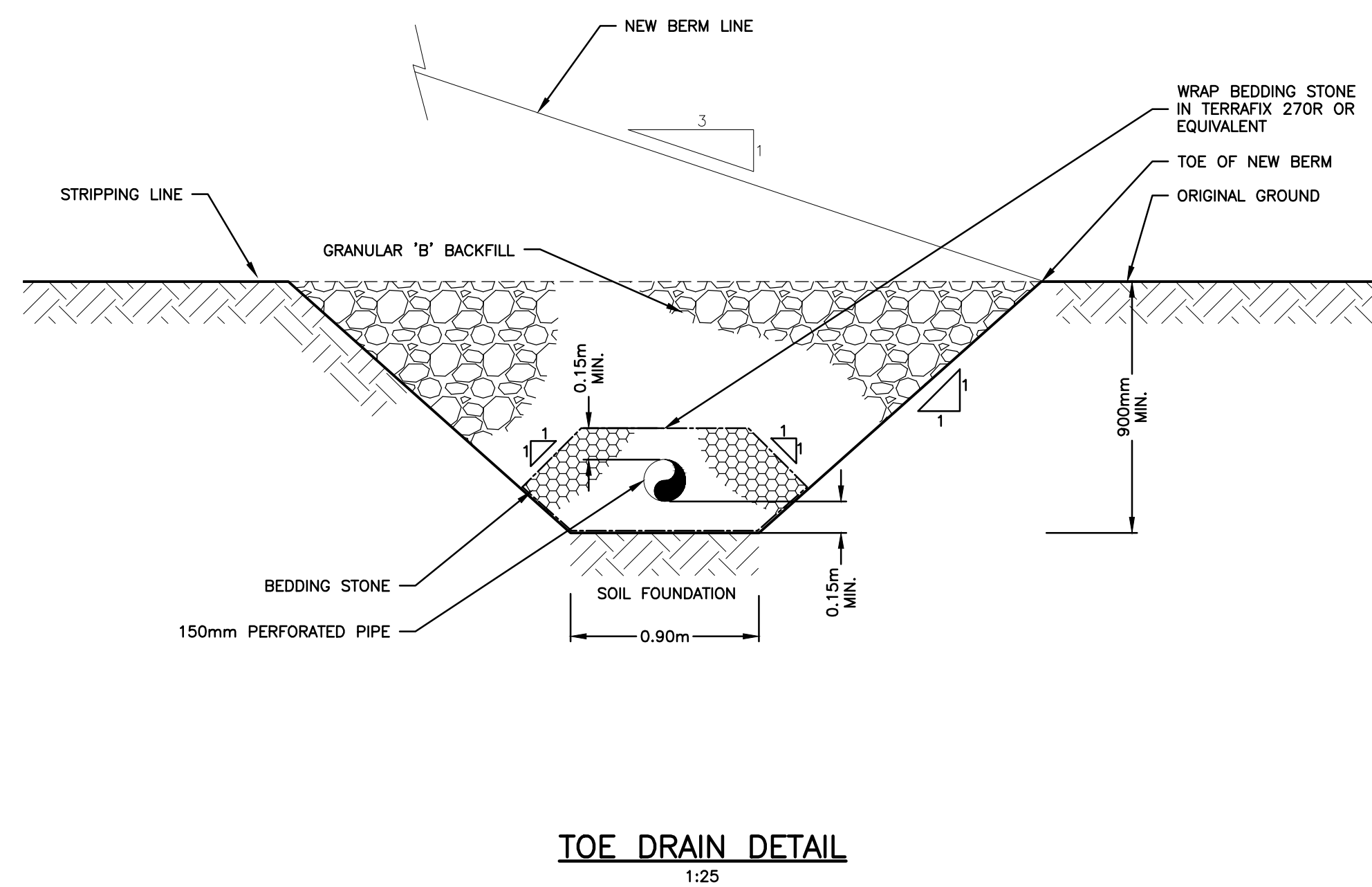
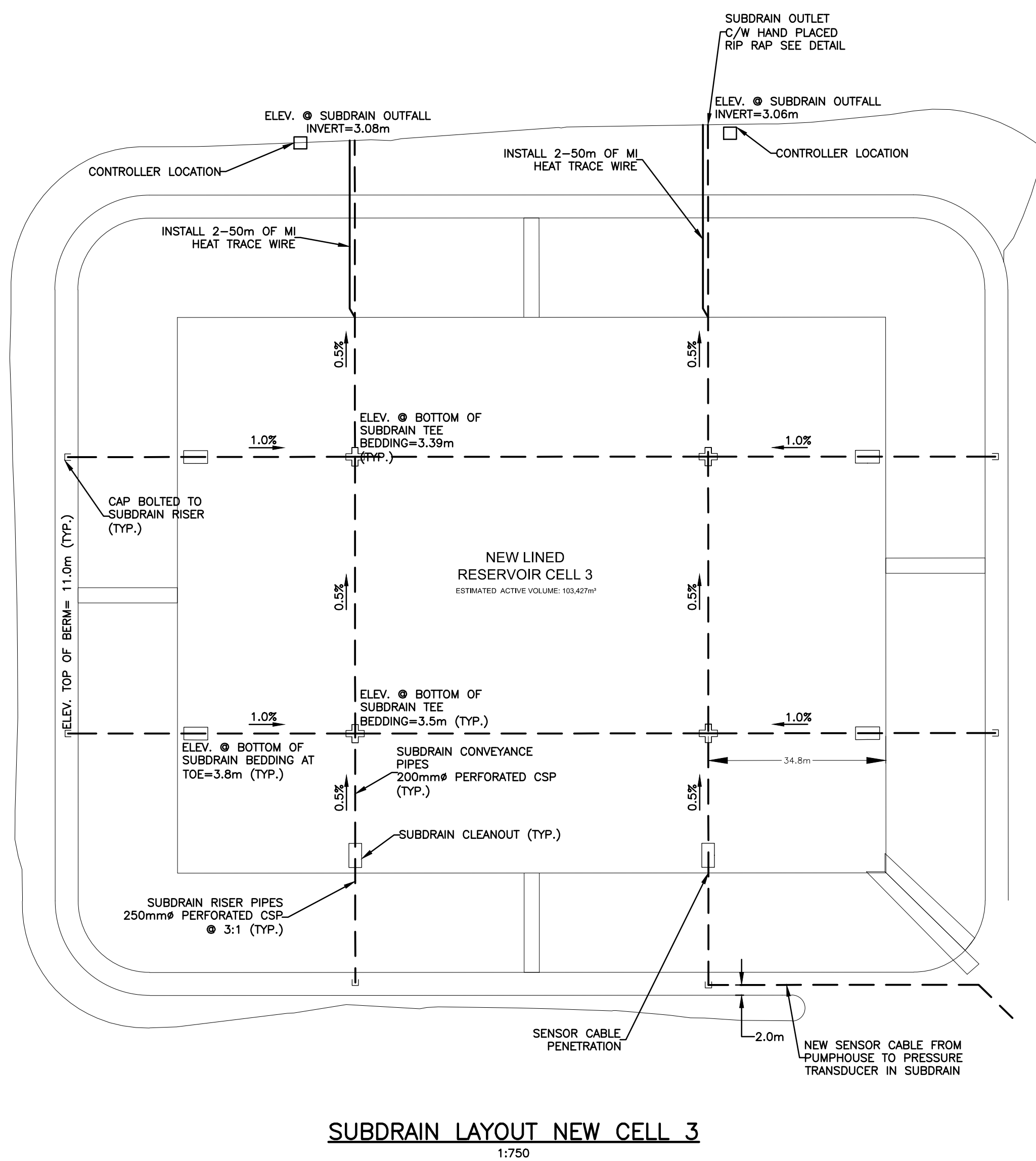
Project No. OTT-00236239-A0

Dwg. No.	Rev. No.
<b>C-201</b>	<b>1</b>



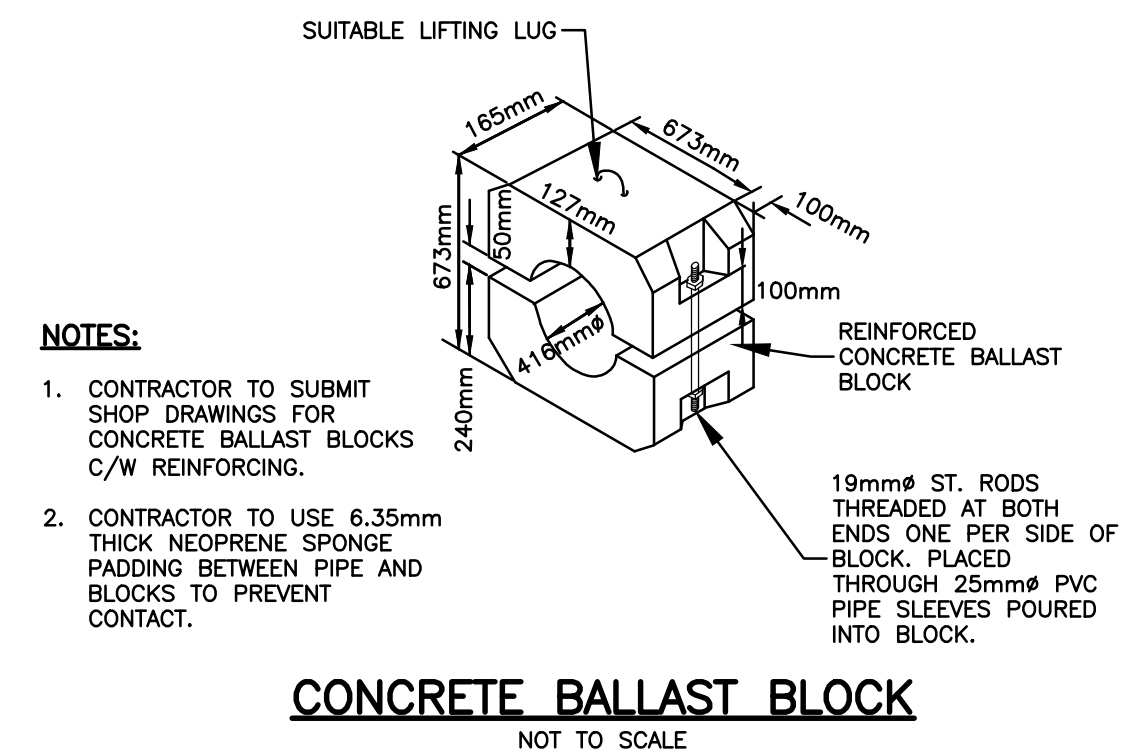
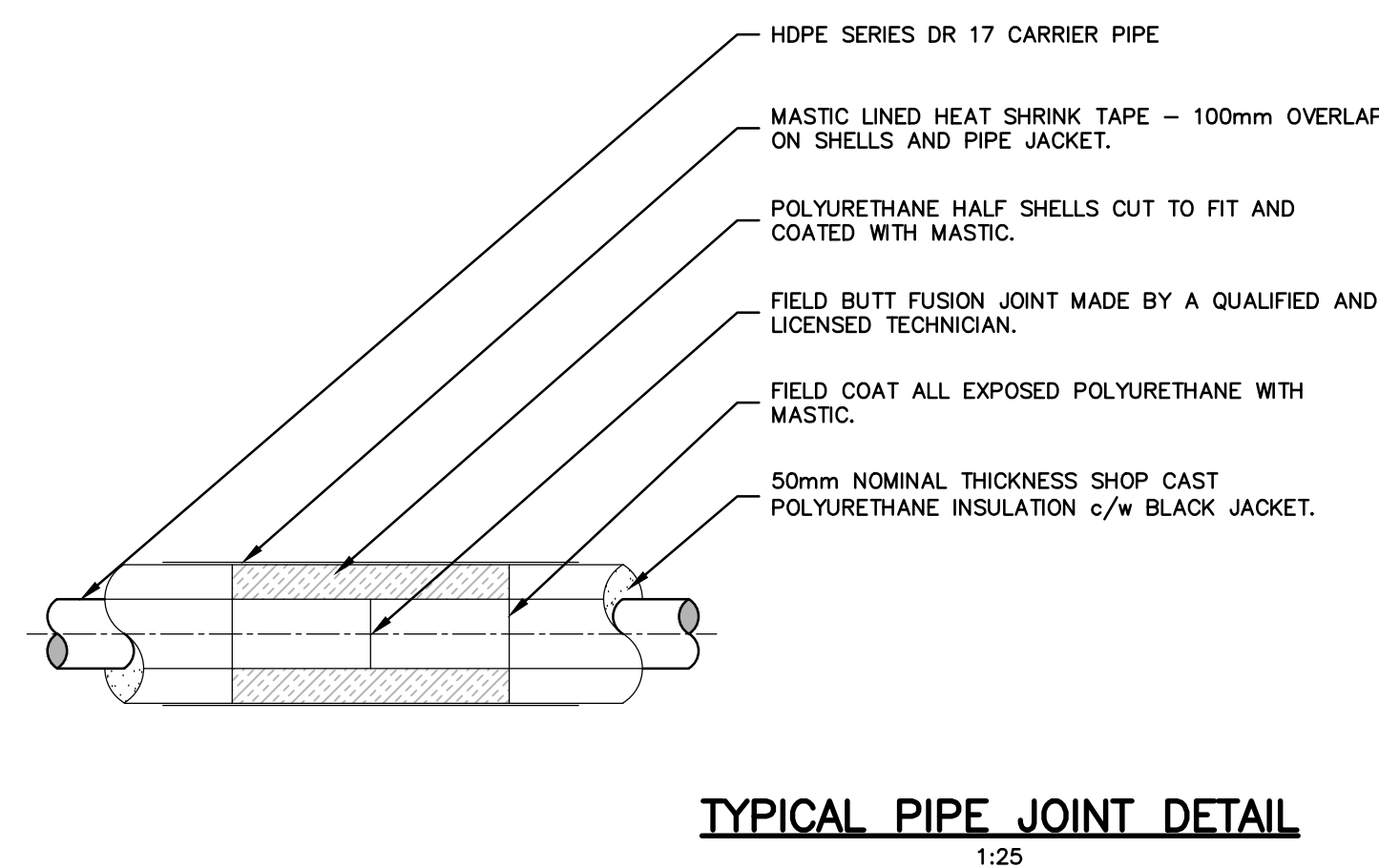
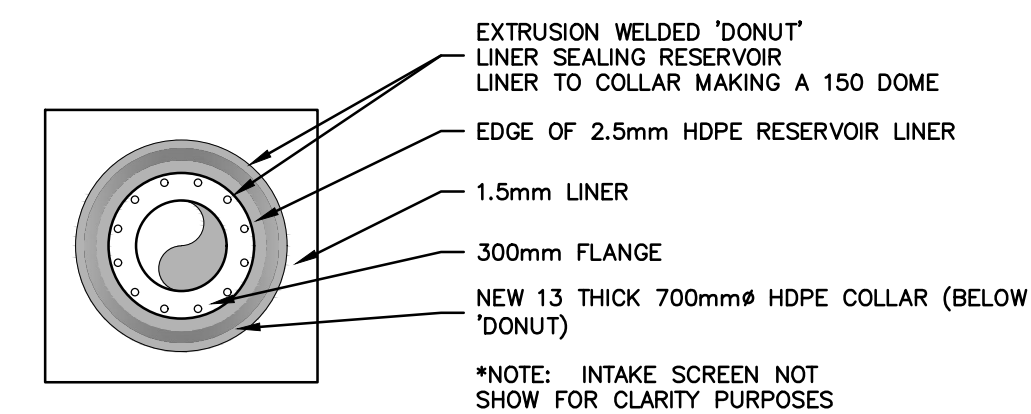
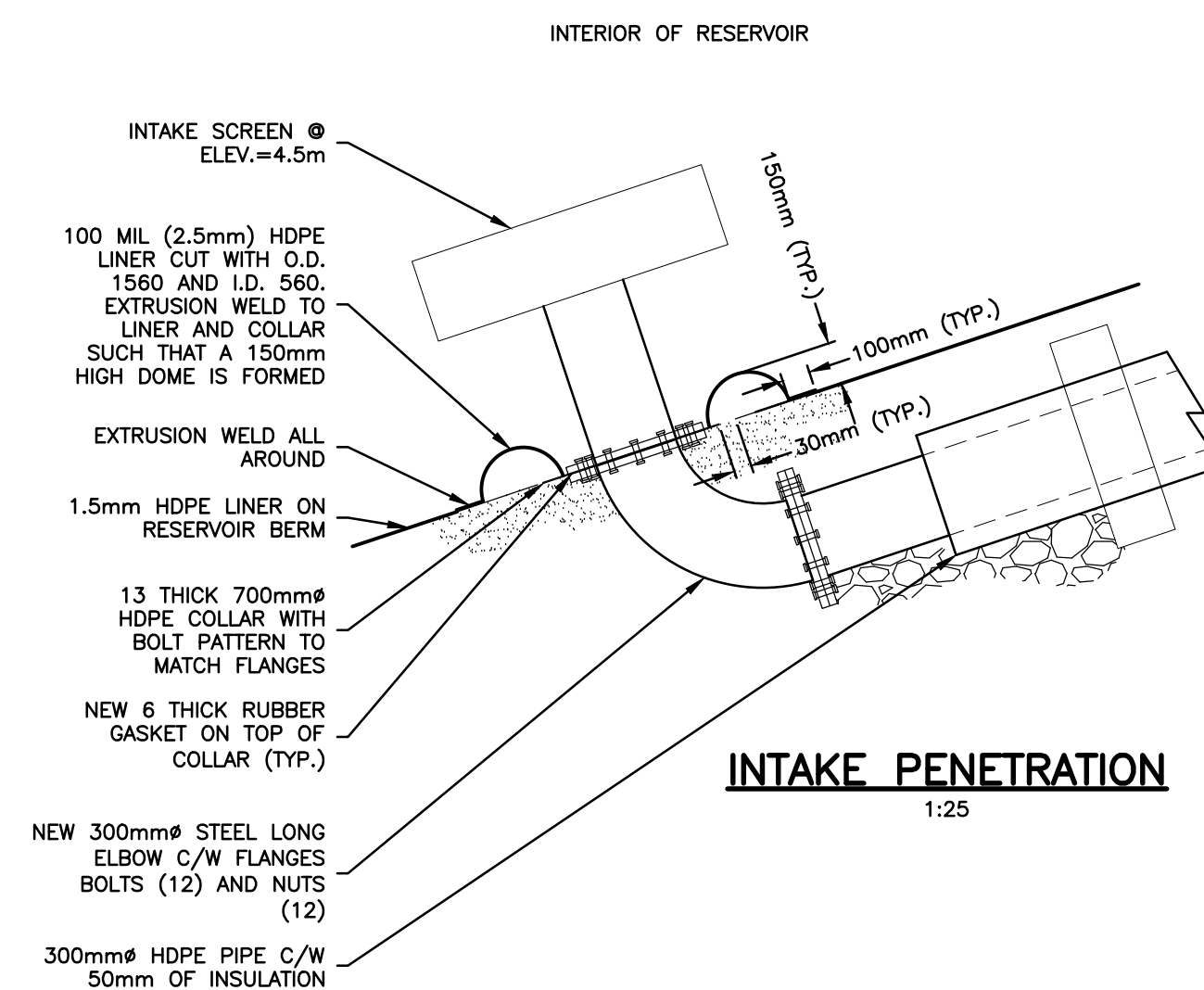
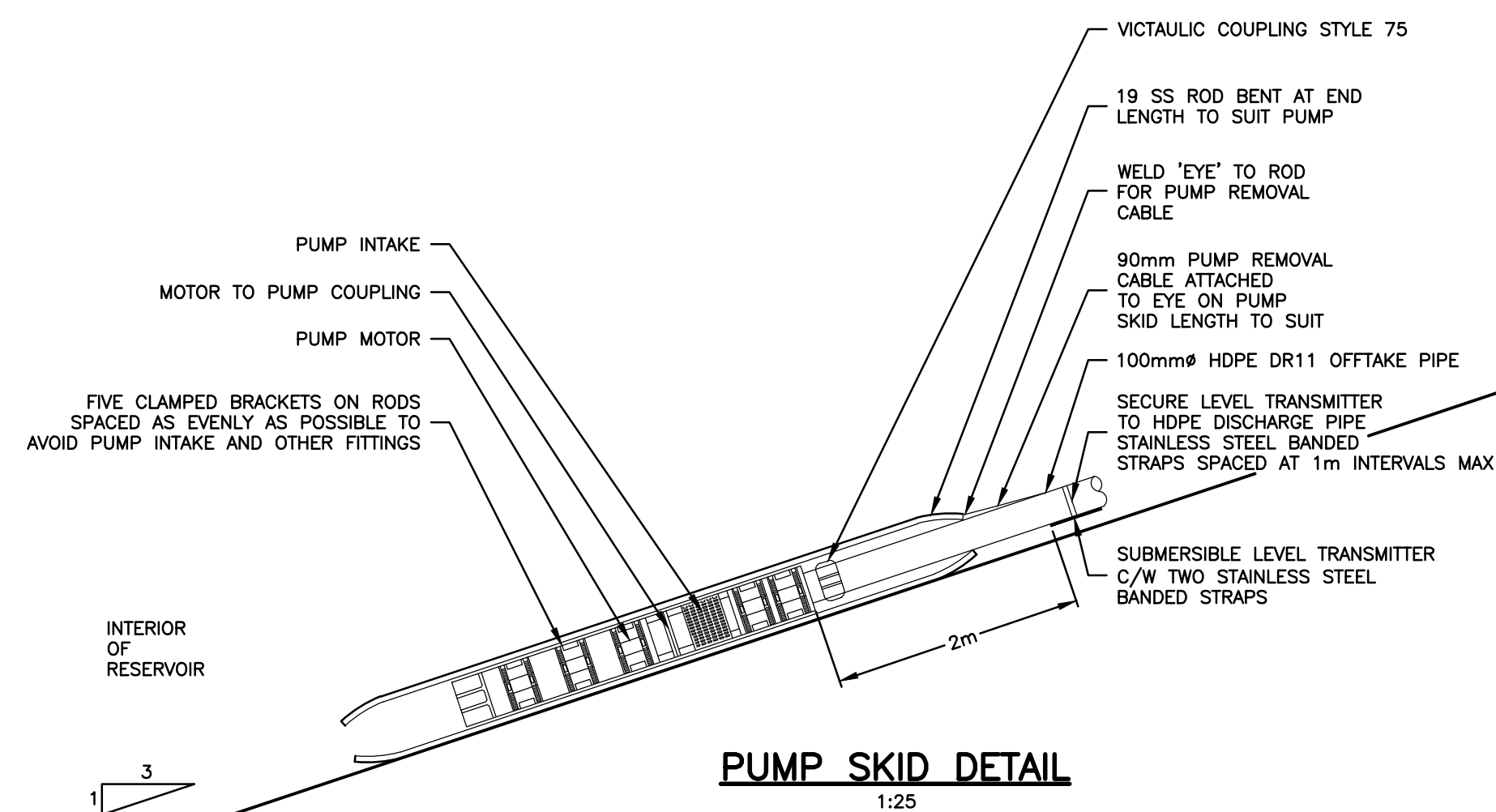
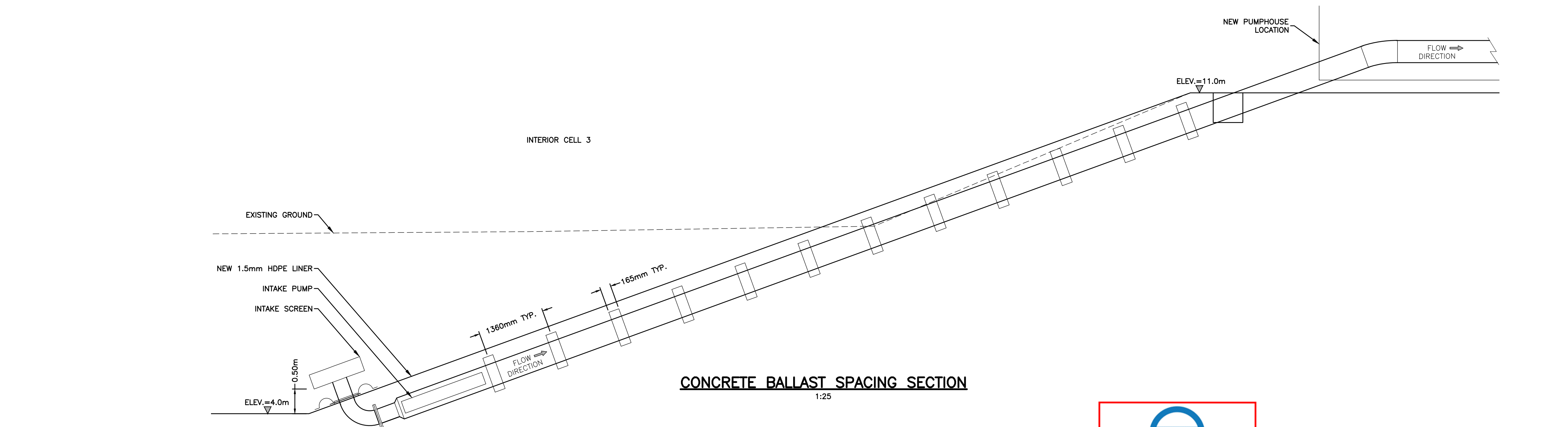






<b>exp Services Inc.</b> t: +1.613.688.1899   f: +1.613.225.7330 2650 Queensview Drive, Unit 100 Ottawa, ON, K2B 8H6 CANADA <a href="http://www.exp.com">www.exp.com</a>		
• BUILDINGS • EARTH & ENVIRONMENT • ENERGY • • INDUSTRIAL • INFRASTRUCTURE • SUSTAINABILITY •		
CAUTION: DO NOT SCALE DRAWINGS. THIS REPRODUCTION MAY BE AT A SIZE DIFFERENT THAN ORIGINALLY DRAWN. EXP ASSUMES NO RESPONSIBILITY FOR INCORRECT SCALING. UNAUTHORIZED REPRODUCTION OR REUSE IS STRICTLY PROHIBITED. NOT PUBLISHED - ALL RIGHTS RESERVED. EXP EXPRESSLY DISCLAIMS RESPONSIBILITY ARISING FROM UNAUTHORIZED USE OF THESE DRAWINGS AND NOTES. AUTHORIZATION MUST BE IN WRITING.		
© exp, 2017		
No.	Issue	Date
<b>exp Services Inc.</b> t: +1.506.452.9000   f: +1.506.459.3954 1133 Regent Street, Suite 300 Fredericton, NB, E3B 3Z2 CANADA <a href="http://www.exp.com">www.exp.com</a>		
• BUILDINGS • EARTH & ENVIRONMENT • ENERGY • • INDUSTRIAL • INFRASTRUCTURE • SUSTAINABILITY •		
	TOWER ARCTIC LTD., AS BUILT	2020.MAY.1
1	RELEASED FOR CONSTRUCTION	2017.AUG.30
No.	Revision	Date
RELEASED FOR CONSTRUCTION		
Professional Seal(s) <div style="float: right; border: 1px solid black; padding: 5px; margin-top: 10px;">           PERMIT OF PRACTICE            EXP SERVICES INC.            Signature:             Date: <u>Aug 30 2017</u>            PERMIT NUMBER: P483            NT/NU Association of Professional Engineers and Geoscientists         </div>		
<div style="display: flex; justify-content: space-between;"> <div style="width: 30%;"> </div> <div style="width: 65%;">           Drawn By: <u>IPC</u>            Dwg Standards Ckd By: <u>STWD</u>            Designed By: <u>SLB</u>            Design Checked By: <u>EAB</u>            Scale: <u>AS SHOWN</u>            Project Title:           <div style="text-align: center; font-weight: bold; font-size: 1.2em; margin-top: 10px;">             WATER TREATMENT              FACILITY AND              RAW WATER STORAGE              ARVIAT, NU           </div> </div> </div>		
Dwg. Title: <div style="text-align: center; font-weight: bold; font-size: 1.2em; margin-top: 10px;">             AS BUILT DRAWINGS: THIS              DRAWING HAS BEEN REVISED TO              SHOW SUBDRAIN AND MISC. WORK              AS INSTALLED              Tower Arctic Ltd. - 5/12/2020           </div>		
Project No. <b>OTT-00236239-A0</b>		
Dwg. No.	C-302	Rev. No.
		1





**exp Services Inc.**  
t: +1.613.688.1899 | f: +1.613.225.7330  
2650 Queensview Drive, Unit 100  
Ottawa, ON, K2B 8H6  
CANADA  
[www.exp.com](http://www.exp.com)



• BUILDINGS • EARTH & ENVIRONMENT • ENERGY •  
• INDUSTRIAL • INFRASTRUCTURE • SUSTAINABILITY •

CAUTION: DO NOT SCALE DRAWINGS.  
THIS REPRODUCTION MAY BE AT A SIZE DIFFERENT THAN ORIGINALLY DRAWN. EXP ASSUMES  
NO RESPONSIBILITY FOR INCORRECT SCALING. UNAUTHORIZED REPRODUCTION OR REUSE IS  
STRICTLY PROHIBITED. NOT PUBLISHED - ALL RIGHTS RESERVED. EXP EXPRESSLY DISCLAIMS  
RESPONSIBILITY ARISING FROM UNAUTHORIZED USE OF THESE DRAWINGS AND NOTES.  
AUTHORIZATION MUST BE IN WRITING.

© exp. 2017

No.	Issue	Date

**exp Services Inc.**  
t: +1.506.452.9000 | f: +1.506.459.3954  
1133 Regent Street, Suite 300  
Fredericton, NB, E3B 3Z2  
CANADA



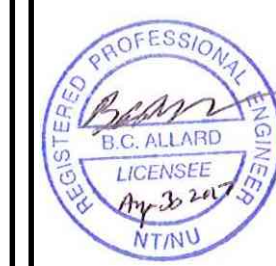
• BUILDINGS • EARTH & ENVIRONMENT • ENERGY •  
• INDUSTRIAL • INFRASTRUCTURE • SUSTAINABILITY •



	TOWER ARCTIC LTD. AS BUILTS	2020.MAY.1
1	RELEASED FOR CONSTRUCTION	2017.AUG.30
No.	Revision	Date

**RELEASED FOR CONSTRUCTION**

Professional Seal(s)



PERMIT OF PRACTICE  
EXP SERVICES INC.

Signature *E. Lind*

Date *Aug 30 2017*

PERMIT NUMBER: P483

NT/NU Association of Professional  
Engineers and Geoscientists

Drawn By:	IPC
Dwg Standards Ckd By:	STWD
Designed By:	SLB
Design Checked By:	EAB
Scale:	AS SHOWN

Project Title	
---------------	--

WATER TREATMENT  
FACILITY AND  
RAW WATER STORAGE  
ARVIAT, NU

Dwg. Title
------------

AS BUILT DRAWINGS: THIS  
DRAWING HAS BEEN REVISED TO  
SHOW INTAKE WORK AS INSTALLED  
Tower Arctic Ltd. - 5/12/2020

Project No. OTT-00236239-A0

Dwg. No.	Rev. No.
<b>C-303</b>	<b>1</b>