

## YEAR BEING REPORTED: 2022

The following information is compiled pursuant to the requirements of Part B, Item 1 of Water License No. **3BM-CHE1523** issued to the **Municipality of Chesterfield Inlet**.

- a. Tabular summaries of all data generated under the “Monitoring Program”, highlighting any exceedances at the Final Discharge Point
- b. Summary of modifications to the “Monitoring Program” in accordance with Part H, Item 11;
- c. Monthly and annual quantities in cubic metres of freshwater obtained from all sources;
- d. Monthly and annual quantities in cubic metres of sewage Waste discharged; and the monthly and yearly quantities of every type of Waste—re: landfill, bulky metal, oil and hazardous—accepted at the Solid Waste Facility; the total volume of sludge removed from the Sewage Holding Cells and the disposal method;

Solid waste quantities can be determined by generation rates found within the Solid Waste Facility O&M Plan

**Table 1: Summary of water obtained from the Reservoir and estimated sewage water discharge in m<sup>3</sup>**

<b>Month Reported</b>	<b>Quantity of Water Obtained from all sources (m<sup>3</sup>)</b>	<b>Quantity of Sewage Waste Discharged (m<sup>3</sup>)</b>
<b>January</b>	1403.575	Same
<b>February</b>	1347.629	Same
<b>March</b>	1475.804	Same
<b>April</b>	1362.194	Same
<b>May</b>	1379.811	Same
<b>June</b>	1321.449	Same
<b>July</b>	1315.501	Same
<b>August</b>	1303.651	Same
<b>September</b>	1366.857	Same
<b>October</b>	1444.696	Same
<b>November</b>	1308.567	Same
<b>December</b>	1342.571	Same
<b>TOTAL</b>	16,372.305	Same

**Note:** No meter exists to measure the sewage discharge volumes, therefore Sewage discharge volumes are considered equal to the water consumption volumes.

- e. a summary of modifications and/or major maintenance work carried out on the Water Supply and Waste Disposal Facility, including all associated structures and facilities;

None

- f. a list of unauthorized discharges and summary of follow-up action taken;

None

- g. a summary of any abandonment and restoration work completed during the year and an outline of any work anticipated for the next year;

None

- h. Any updates or revisions for manuals and plans (*Including Operations and Maintenance Manuals, QA/QC*) as required by changes in operation and/or technology;

Submitted with licence renewal.

- i. a summary of any studies, reports and plans requested by the Board that relate to Waste disposal, Water use or reclamation, and a brief description of any future studies planned;

None

- j. Summary of any inspections completed by federal or territorial authorities, geotechnical or municipal engineers, on undertakings related to Waste disposal, Water use or reclamation activities

No CIRNAC inspection took place in 2022. No other inspections were performed in 2022.

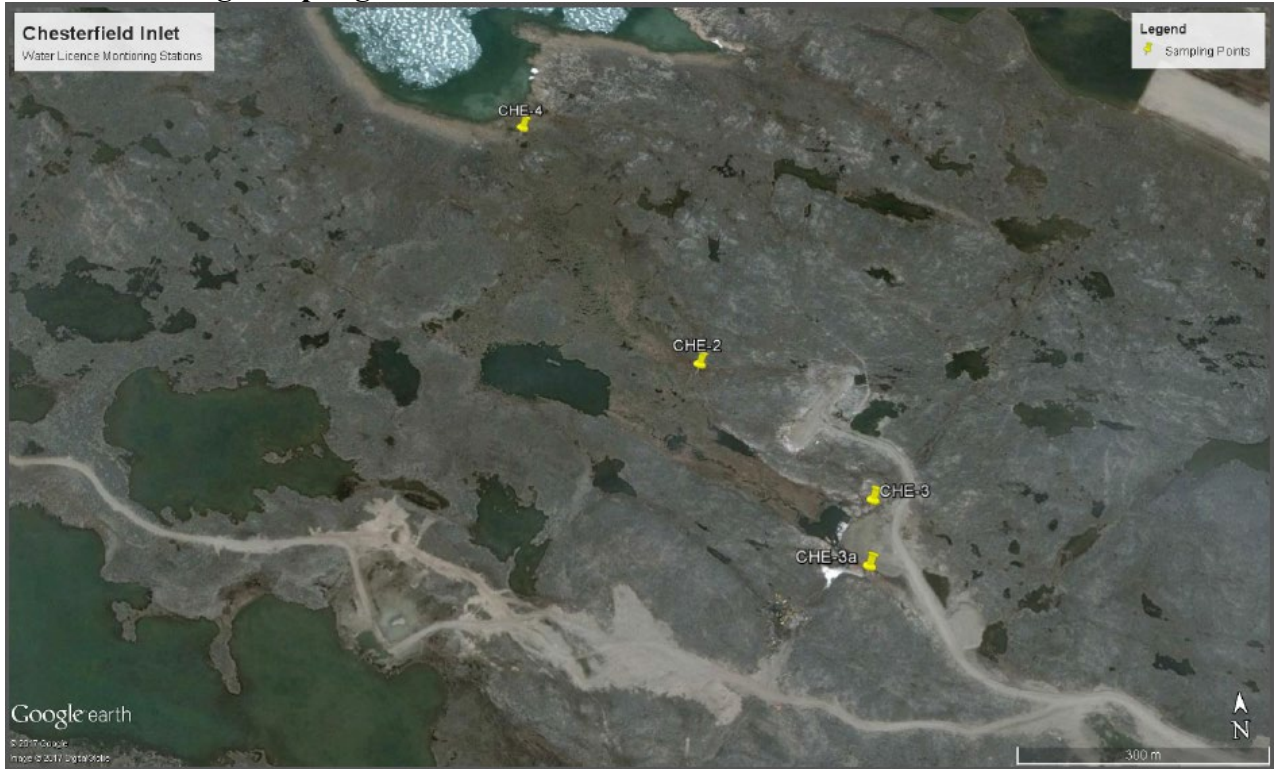
- k. any other details on Water use or Waste disposal requested by the Board by November 1<sup>st</sup> of the year being reported.

None

## ADDITIONAL INFORMATION THAT THE LICENSEE DEEMS USEFUL:

- The license renewal for 3BM CHE1523 is in progress. This license will be changed to a Type A due to the daily water use during the annual resupply of the raw water reservoir. Nothing is changing operationally; this is just a new interpretation of the Nunavut Waters Regulations.

### Water Licensing Sampling Points:



CHE-2: Runoff from Solid Waste Disposal Facilities

CHE-3: Effluent from Sewage Holding Cell 1

CHE-3a: Effluent from Sewage Holding Cell 2

CHE-4: Final Discharge Point for Effluent from the wetland treatment area prior to Finder Bay

**Appendix A: Evidence of Bottle Shortage**

# Appendix A

**Due to bottle shortage in the region, Chesterfield Inlet was unable to undertake the Monitoring Program in 2022. The below emails show that water bottles were ordered on 24 May 2022. Bottles were meant to be shipped as per email dated 12 October 2022 for wastewater analysis. No shipment was received.**

**From:** [Muckpah-Gavin, Megan](#)  
**To:** [Duncan, Caroline](#)  
**Subject:** FW: Nunavut Communities - Waste Water Coolers - 7 communities - sampling bottle order - Arviat, Naujaat, Whale Cove, Coral Harbour, Chesterfield Inlet, Baker Lake, Rankin Inlet & Rankin CGS  
**Date:** March 7, 2023 10:30:01 AM  
**Attachments:** [image013.png](#)  
[image014.png](#)  
[image015.png](#)  
[image016.png](#)

---

---

**From:** Craig Riddell <Craig.Riddell@ALSGlobal.com>  
**Sent:** June 14, 2022 5:22 PM  
**To:** Muckpah-Gavin, Megan <MGavin@GOV.NU.CA>  
**Cc:** Lusty, Megan <MLusty@GOV.NU.CA>  
**Subject:** RE: Nunavut Communities - Waste Water Coolers - 7 communities - sampling bottle order - Arviat, Naujaat, Whale Cove, Coral Harbour, Chesterfield Inlet, Baker Lake, Rankin Inlet & Rankin CGS

**CAUTION:** This email originated from outside of the organization. Do not click links or open attachments unless you recognize the sender and know the content is safe.

I will try to get these out on Calm Air this week.



Craig Riddell  
Project Manager , Winnipeg Environmental  
**Canada**

O: +204-255-9755

[craig.riddell@alsglobal.com](mailto:craig.riddell@alsglobal.com)  
Unit 12 - 1329 Niakwa Road East  
Winnipeg, MB,  
R2J 3T4

[alsglobal.com](http://alsglobal.com)



[EnviroMail 31 Update - Climate Change and Sustainability Action and Outcomes at ALS Canada](#)  
[EnviroMail 37 - In Vitro Bioaccessibility of Lead and Arsenic in Soil](#)  
[EnviroMail 36 - Ion Balance: Data Quality Validation for Metals & Anions in Waters](#)  
[EnviroMail 00 - Summary of all EnviroMails Canada](#)

[How was your ALS experience?](#)

---

**From:** Muckpah-Gavin, Megan <[MGavin@GOV.NU.CA](mailto:MGavin@GOV.NU.CA)>

**Sent:** Tuesday, June 14, 2022 4:12 PM

**To:** Craig Riddell <[Craig.Riddell@ALSGlobal.com](mailto:Craig.Riddell@ALSGlobal.com)>

**Cc:** Lusty, Megan <[MLusty@GOV.NU.CA](mailto:MLusty@GOV.NU.CA)>

**Subject:** Nunavut Communities - Waste Water Coolers - 7 communities - sampling bottle order - Arviat, Naujaat, Whale Cove, Coral Harbour, Chesterfield Inlet, Baker Lake, Rankin Inlet & Rankin CGS

Hey Craig,

Would it be possible to expedite the shipment of Cooler 1 into each community?

Thanks,



**Megan Muckpah-Gavin**

Municipal Technical Officer,  
Community & Government Services

**Phone** 867-645-8120

**Email** [mgavin@gov.nu.ca](mailto:mgavin@gov.nu.ca)

---

**From:** Craig Riddell <[Craig.Riddell@ALSGlobal.com](mailto:Craig.Riddell@ALSGlobal.com)>

**Sent:** June 14, 2022 2:47 PM

**To:** Muckpah-Gavin, Megan <[MGavin@GOV.NU.CA](mailto:MGavin@GOV.NU.CA)>

**Cc:** Lusty, Megan <[MLusty@GOV.NU.CA](mailto:MLusty@GOV.NU.CA)>

**Subject:** RE: [EXTERNAL] - RE: WLM sampling bottle order

**CAUTION:** This email originated from outside of the organization. Do not click links or open attachments unless you recognize the sender and know the content is safe.

Our shipping dept is backlogged , These have not yet been sent.



Craig Riddell  
Project Manager , Winnipeg Environmental  
**Canada**

O: +204-255-9755

[craig.riddell@alsglobal.com](mailto:craig.riddell@alsglobal.com)

Unit 12 - 1329 Niakwa Road East  
Winnipeg, MB,  
R2J 3T4

[alsglobal.com](http://alsglobal.com)



[EnviroMail 31 Update - Climate Change and Sustainability Action and Outcomes at ALS Canada](#)

[EnviroMail 37 - In Vitro Bioaccessibility of Lead and Arsenic in Soil](#)

[EnviroMail 36 - Ion Balance: Data Quality Validation for Metals & Anions in Waters](#)

[EnviroMail 00 - Summary of all EnviroMails Canada](#)

[How was your ALS experience?](#)

---

**From:** Muckpah-Gavin, Megan <[MGavin@GOV.NU.CA](mailto:MGavin@GOV.NU.CA)>

**Sent:** Tuesday, June 14, 2022 2:30 PM

**To:** Craig Riddell <[Craig.Riddell@ALSGlobal.com](mailto:Craig.Riddell@ALSGlobal.com)>

**Cc:** Lusty, Megan <[MLusty@GOV.NU.CA](mailto:MLusty@GOV.NU.CA)>

**Subject:** [EXTERNAL] - RE: WLM sampling bottle order

**CAUTION:** This email originated from outside of ALS. Do not click links or open attachments unless you recognize the sender and are sure content is relevant to you.

Good afternoon Craig,

Can you please confirm if these bottles were sent ?

Thanks!



**Megan Muckpah-Gavin**

Municipal Technical Officer,  
Community & Government Services

**Phone** 867-645-8120



**From:** Muckpah-Gavin, Megan  
**Sent:** May 24, 2022 9:24 AM  
**To:** Craig Riddell <[Craig.Riddell@ALSGlobal.com](mailto:Craig.Riddell@ALSGlobal.com)>  
**Cc:** Lusty, Megan <[MLusty@GOV.NU.CA](mailto:MLusty@GOV.NU.CA)>  
**Subject:** WLM sampling bottle order

Good morning Craig,

Hope you enjoyed your long weekend! Can you please send Wastewater sampling bottles to the following communities via Canada Post? Please have the bottles labelled as documented on the attached CoC Forms if possible.

### Group 1 Bottle Set

BOD (1 x 500 mL Plastic)  
Routine (1 x 500 mL Plastic)  
CBOD (1 x 500 mL Plastic)  
Total Metals Analysis (1 x 60 mL Plastic)  
Mercury (1 x 40 mL Clear Glass)  
Nutrients & Phenols (2 x 100 mL Amber Glass)  
Bacteria (1 x 250 mL Plastic)  
Oil and Grease (2 x 250 mL Amber Glass)

### Group 2 Bottle Set

BTEX-F1 (3 x 40 mL Clear Glass)  
F2-F4 (2 x 100 mL Amber Glass)  
PAH (2 x 100mL Amber Glass)

- **Hamlet of Arviat** - Account W10578
  - Cooler 1: 5 sets of Group 1; 3 sets of Group 2
  - Cooler 2: 4 sets of Group 1; 3 sets of Group 2
  - Cooler 3: 4 sets of Group 1; 3 sets of Group 2
  - Cooler 4: 4 sets of Group 1; 3 sets of Group 2

Shipping address: Hamlet of Arviat  
Attn: Laura Tassiuk

P.O. Box 150  
Arviat, NU  
X0C 0H0  
Phone: 867-857-2841

- **Hamlet of Naujaat** - Account W10624

Cooler 1: 4 sets of Group 1; 3 sets of Group 2  
Cooler 2: 4 sets of Group 1; 3 sets of Group 2  
Cooler 3: 4 sets of Group 1; 3 sets of Group 2

Shipping address: Hamlet of Naujaat  
Attn: Kevin Tegumiar  
P.O. Box 10  
Naujaat, NU  
X0C 0H0  
Phone: 867-462-9952

- **Hamlet of Whale Cove** - Account W10623

Cooler 1: 3 sets of Group 1; 1 set of Group 2  
Cooler 2: 3 sets of Group 1; 1 set of Group 2  
Cooler 3: 3 sets of Group 1; 1 set of Group 2

Shipping address: Hamlet of Whale Cove  
Attn: Stanley Adjuk  
P.O. Box 120  
Whale Cove, NU  
X0C 0J0  
Phone: 867-896-9961

- **Hamlet of Coral Harbour** - Account W10622

Cooler 1: 5 sets of Group 1; 2 sets of Group 2  
Cooler 2: 5 sets of Group 1; 2 sets of Group 2  
Cooler 3: 5 sets of Group 1; 2 sets of Group 2

Shipping address: Hamlet of Coral Harbour  
Attn: Darryl Nakoolak  
P.O. Box 30  
Coral Harbour, NU  
X0C 0C0  
Phone: 867-925-8970

- **Hamlet of Chesterfield Inlet** - Account W10621

Cooler 1: 4 sets of Group 1; 1 set of Group 2  
Cooler 2: 4 sets of Group 1; 1 set of Group 2  
Cooler 3: 4 sets of Group 1; 1 set of Group 2

Cooler 4: 4 sets of Group 1; 1 set of Group 2

Shipping address: Hamlet of Chesterfield Inlet  
Attn: Don Tanuyak  
P.O. Box 10  
Chesterfield Inlet, NU  
X0C 0B0  
Phone: 867-898-9939

- **Hamlet of Baker Lake** - Account W10567

Cooler 1: 4 sets of Group 1; 1 set of Group 2

Cooler 2: 1 set of Group 1

Cooler 3: 1 set of Group 1

Shipping address: Hamlet of Baker Lake  
Attn: Sheldon Dorey  
P.O. Box 149  
Baker Lake, NU  
X0C 0A0  
Phone: 867-793-2874

- **Hamlet of Rankin Inlet** - Account W10629

Cooler 1: 1 set of Group 1; 1 set of Group 2

Cooler 2: 1 set of Group 1; 1 set of Group 2

Cooler 3: 1 set of Group 1; 1 set of Group 2

Shipping address: Hamlet of Rankin Inlet  
Attn: Troy Aksalnik  
P.O. Bag 310  
Rankin Inlet, NU  
X0C 0G0  
Phone: 867-645-6467

- **Rankin Inlet – GN-CGS** - Account W8133

Cooler 1: 2 sets of Group 1; 2 sets of Group 2

6 extra bottle sets for both Group 1 & 2

Shipping address: Rankin Inlet – GN-CGS  
ATTN: Megan Muckpah-Gavin  
P.O. Box 490  
Rankin Inlet, NU  
X0C 0G0  
Phone: 867-645-8120

Thanks!



**Megan Muckpah-Gavin**

Municipal Technical Officer,  
Community & Government Services

**Phone** 867-645-8120

**Email** [mgavin@gov.nu.ca](mailto:mgavin@gov.nu.ca)

**From:** [Muckpah-Gavin, Megan](#)  
**To:** [Duncan, Caroline](#)  
**Subject:** FW: Kivalliq Communities - Waste Water Sample bottles BR373546 Arviat , BR373553 Naujaat , BR373555 Whale Cove , BR373560 Coral Harbour, BR373566 Chesterfield Inlet, BR373567 Baker Lake , BR373570 Rankin Inlet - BR373571 Nuavut CGS Rankin Inlet  
**Date:** March 7, 2023 10:32:46 AM  
**Attachments:** [image002.png](#)  
[image006.png](#)  
[image007.png](#)  
[image010.png](#)  
[image011.png](#)  
[image012.png](#)

---

Again.. I never received any shipments last year

---

**From:** Craig Riddell <Craig.Riddell@ALSGlobal.com>  
**Sent:** October 12, 2022 12:57 PM  
**To:** Muckpah-Gavin, Megan <MGavin@GOV.NU.CA>; ALSWP Shipping <ALSWP.Shipping@ALSGlobal.com>  
**Cc:** Chalmers, Elan <EChalmers@gov.nu.ca>  
**Subject:** Kivalliq Communities - Waste Water Sample bottles BR373546 Arviat , BR373553 Naujaat , BR373555 Whale Cove , BR373560 Coral Harbour, BR373566 Chesterfield Inlet, BR373567 Baker Lake , BR373570 Rankin Inlet - BR373571 Nuavut CGS Rankin Inlet

**CAUTION:** This email originated from outside of the organization. Do not click links or open attachments unless you recognize the sender and know the content is safe.

Hi Megan,

I will have shipping send out these orders to the seven hamlets and yourself for the waste water – the drinking water was sent previously .

Arviat BR373546

Naujaat BR373553

Whale Cove BR373555

Coral Harbour BR373560

Chesterfield Inlet BR373566

Baker Lake BR373567

Rankin Inlet BR373570

Nunavut CGS – Rankin Inlet W8133 BR373571



right solutions.  
right partner.

Craig Riddell  
Project Manager - Winnipeg  
**Canada**

O: +1 204 255 9720

D: +1 204 255 9755

[Craig.riddell@alsglobal.com](mailto:Craig.riddell@alsglobal.com)

ALS Laboratories - Winnipeg  
Unit 12 - 1329 Niakwa Rd East  
Winnipeg, MB, R2J 3T4

[alsglobal.com](http://alsglobal.com)



## WORKING TOWARD A BETTER WORLD

Sustainability report 2022

alsglobal.com



[EnviroMail 40 - Simplifying RBCA Hydrocarbon Testing with Sample Miniaturization & Contaminant ID Tools](#)

[EnviroMail 39 - Biogas and Renewable Natural Gas Characterization](#)

[EnviroMail 38 - Subcontractor Safety Performance Reporting and Positive Performance Indicators](#)

[EnviroMail 00 - Summary of all EnviroMails Canada](#)

[How was your ALS experience?](#)

---

**From:** Muckpah-Gavin, Megan <[MGavin@GOV.NU.CA](mailto:MGavin@GOV.NU.CA)>

**Sent:** Wednesday, October 12, 2022 8:57 AM

**To:** Craig Riddell <[Craig.Riddell@ALSGlobal.com](mailto:Craig.Riddell@ALSGlobal.com)>

**Cc:** Chalmers, Elan <[EChalmers@gov.nu.ca](mailto:EChalmers@gov.nu.ca)>

**Subject:** RE: [EXTERNAL] - DWC/WLM Sample bottles

Good morning, Craig,

Just wondering if these bottles were ever sent up yet as we'd like to get at least one set done before the freeze-up. Please let me know if any has been sent.

Regards,



**Megan Muckpah-Gavin**

Municipal Technical Officer,  
Community & Government Services

**Phone** 867-645-8120

**Email** [mgavin@gov.nu.ca](mailto:mgavin@gov.nu.ca)

---

**From:** Muckpah-Gavin, Megan

**Sent:** September 29, 2022 2:07 PM

**To:** 'Craig Riddell' <[Craig.Riddell@ALSGlobal.com](mailto:Craig.Riddell@ALSGlobal.com)>

**Cc:** Chalmers, Elan <[EChalmers@gov.nu.ca](mailto:EChalmers@gov.nu.ca)>

**Subject:** RE: [EXTERNAL] - DWC/WLM Sample bottles

Hello,

Just following up on the status of shipping these bottles up that I had ordered back in May in another email chain. If possible we can expedite the shipments for the Wastewater sampling to cooler 1 into each community and then following the rest of coolers.

Thanks,



**Megan Muckpah-Gavin**

Municipal Technical Officer,  
Community & Government Services

Phone 867-645-8120

Email [mgavin@gov.nu.ca](mailto:mgavin@gov.nu.ca)

---

**From:** Muckpah-Gavin, Megan  
**Sent:** August 8, 2022 1:21 PM  
**To:** Craig Riddell <[Craig.Riddell@ALSGlobal.com](mailto:Craig.Riddell@ALSGlobal.com)>  
**Cc:** Chalmers, Elan <[EChalmers@gov.nu.ca](mailto:EChalmers@gov.nu.ca)>  
**Subject:** FW: [EXTERNAL] - DWC/WLM Sample bottles

Good Afternoon Craig,

Hope you had a great weekend. I am just following up on the sampling bottles I had ordered back in May. Just checking in to see if any has been sent or not. This is for both Water Chemistry sampling and Water License Monitoring for all Kivalliq Communities shown below. Any information on shipping or estimated shipping would be greatly appreciated

Can you please send Water Chemistry sample bottles to the following communities via Calm air Cargo using shipping account 922551. Please also have the bottles pre- labelled, if possible, as documented below.

- **Arviat** – 4 bottle sets of Water Chemistry, including THM and HAA for the treated water sample. (Labels: Raw Cell 1; Raw Cell 2; Raw Cell 3; Treated Water)
- Additional bottles: Dissolved metals, Cyanide, Mercury vial, BT, 2X F1-F4 Petroleum Hydrocarbon, 2X Amber PAH bottles (Raw & Treated)

Shipping address:      Arviat – GN CGS  
                                         ATTN: Ukkualuk Karetak  
                                         P.O Box 278  
                                         Arviat, NU  
                                         X0C 0E0  
                                         PH: 867-857-2860

- **Baker Lake** – 2 bottle sets of Water Chemistry, including THM and HAA for the treated water sample. (Labels: Raw Water; Treated Water)
- Additional bottles: Dissolved metals, Cyanide, Mercury vial, BT, 2X F1-F4 Petroleum Hydrocarbon, 2X Amber PAH bottles (Raw & Treated)

Shipping address:      Baker Lake – GN CGS  
                                         ATTN: Greg MacDonald  
                                         P.O Box 309  
                                         Baker Lake, NU  
                                         [Redacted]

X0C 0A0  
PH: 867-793-2744

- **Chesterfield Inlet** – 2 bottle sets of Water Chemistry, including THM and HAA for the treated water sample. (Labels: Raw Water; Treated Water)
- Additional bottles: Dissolved metals, Cyanide, Mercury vial, BT, 2X F1-F4 Petroleum Hydrocarbon, 2X Amber PAH bottles (Raw & Treated)

Shipping address: Hamlet of Chesterfield Inlet  
ATTN: Don Tanuyak  
P.O. Box 10  
Chesterfield Inlet, NU  
X0C 0B0  
PH: 867-898-9926

- **Coral Harbour** - 2 bottle sets of Water Chemistry, including THM and HAA for the treated water sample. (Labels: Raw Water; Treated Water)
- Additional bottles: Dissolved metals, Cyanide, Mercury vial, BT, 2X F1-F4 Petroleum Hydrocarbon, 2X Amber PAH bottles (Raw & Treated)

Shipping address: Hamlet of Coral Harbour  
ATTN: Darryl Nakoolak  
Coral Harbour, NU  
P.O. Box 30  
X0C 0C0  
PH: 867-925-8970

- **Naujaat** – 2 bottle sets of Water Chemistry, including THM and HAA for the treated water sample. (Labels: Raw Water; Treated Water)
- Additional bottles: Dissolved metals, Cyanide, Mercury vial, BT, 2X F1-F4 Petroleum Hydrocarbon, 2X Amber PAH bottles (Raw & Treated)

Shipping address: Naujaat – GN CGS  
ATTN: Cyril Kusugak  
Naujaat, NU  
X0C 0H0  
PH: 867-462-4093

- **Rankin Inlet** – 2 bottle sets of Water Chemistry, including THM and HAA for the treated water sample. (Labels: Raw Water; Treated Water)
- Additional bottles: Dissolved metals, Cyanide, Mercury vial, BT, 2X F1-F4 Petroleum Hydrocarbon, 2X Amber PAH bottles (Raw & Treated)

Shipping address: Rankin Inlet – GN CGS  
ATTN: Steve Fitzpatrick  
P.O. Box 490  
Rankin Inlet, NU  
X0C 0G0  
PH: 867-645-8172

- **Whale Cove** – 2 bottle sets of Water Chemistry, including THM and HAA for the treated water sample.



(Labels: Raw Water; Treated Water)

- Additional bottles: Dissolved metals, Cyanide, Mercury vial, BT, 2X F1-F4 Petroleum Hydrocarbon, 2X Amber PAH bottles (Raw & Treated)

Shipping address: Whale Cove – GN CGS  
ATTN: Paul Voisey  
P.O Box 96  
Whale Cove, NU  
X0C 0J0  
PH: 867-896-9305

-  
**Water License Monitoring**

**\*VIA Canada Post\***

**Group 1 Bottle Set**

BOD (1 x 500 mL Plastic)  
Routine (1 x 500 mL Plastic)  
CBOD (1 x 500 mL Plastic)  
Total Metals Analysis (1 x 60 mL Plastic)  
Mercury (1 x 40 mL Clear Glass)  
Nutrients & Phenols (2 x 100 mL Amber Glass)  
Bacteria (1 x 250 mL Plastic)  
Oil and Grease (2 x 250 mL Amber Glass)

-  
**Group 2 Bottle Set**

BTEX-F1 (3 x 40 mL Clear Glass)  
F2-F4 (2 x 100 mL Amber Glass)  
PAH (2 x 100mL Amber Glass)

- 
- **Hamlet of Arviat - Account W10578**  
Cooler 1: 5 sets of Group 1; 3 sets of Group 2  
Cooler 2: 4 sets of Group 1; 3 sets of Group 2  
Cooler 3: 4 sets of Group 1; 3 sets of Group 2  
Cooler 4: 4 sets of Group 1; 3 sets of Group 2

-  
Shipping address: Hamlet of Arviat  
Attn: Laura Tassiuk  
P.O. Box 150  
Arviat, NU  
X0C 0H0  
Phone: 867-857-2841

- **Hamlet of Nauyasat - Account W10624**  
Cooler 1: 4 sets of Group 1; 3 sets of Group 2  
Cooler 2: 4 sets of Group 1; 3 sets of Group 2  
Cooler 3: 4 sets of Group 1; 3 sets of Group 2

Shipping address: Hamlet of Nauyasat  
Attn: Kevin Tegumiar

P.O. Box 10  
Naujaat, NU  
X0C 0H0  
Phone: 867-462-9952

- **Hamlet of Whale Cove** - Account W10623  
Cooler 1: 3 sets of Group 1; 1 set of Group 2  
Cooler 2: 3 sets of Group 1; 1 set of Group 2  
Cooler 3: 3 sets of Group 1; 1 set of Group 2

Shipping address: Hamlet of Whale Cove  
Attn: Stanley Adjuk  
P.O. Box 120  
Whale Cove, NU  
X0C 0J0  
Phone: 867-896-9961

- **Hamlet of Coral Harbour** - Account W10622  
Cooler 1: 5 sets of Group 1; 2 sets of Group 2  
Cooler 2: 5 sets of Group 1; 2 sets of Group 2  
Cooler 3: 5 sets of Group 1; 2 sets of Group 2

Shipping address: Hamlet of Coral Harbour  
Attn: Darryl Nakoolak  
P.O. Box 30  
Coral Harbour, NU  
X0C 0C0  
Phone: 867-925-8970

- **Hamlet of Chesterfield Inlet** - Account W10621  
Cooler 1: 4 sets of Group 1; 1 set of Group 2  
Cooler 2: 4 sets of Group 1; 1 set of Group 2  
Cooler 3: 4 sets of Group 1; 1 set of Group 2  
Cooler 4: 4 sets of Group 1; 1 set of Group 2

Shipping address: Hamlet of Chesterfield Inlet  
Attn: Don Tanuyak  
P.O. Box 10  
Chesterfield Inlet, NU  
X0C 0B0  
Phone: 867-898-9939

- **Hamlet of Baker Lake** - Account W10567  
Cooler 1: 4 sets of Group 1; 1 set of Group 2  
Cooler 2: 1 set of Group 1  
Cooler 3: 1 set of Group 1

Shipping address: Hamlet of Baker Lake  
Attn: Sheldon Dorey  
P.O. Box 149  
Baker Lake, NU  
X0C 0A0

Phone: 867-793-2874

- **Hamlet of Rankin Inlet** - Account W10629  
Cooler 1: 1 set of Group 1; 1 set of Group 2  
Cooler 2: 1 set of Group 1; 1 set of Group 2  
Cooler 3: 1 set of Group 1; 1 set of Group 2

Shipping address: Hamlet of Rankin Inlet  
Attn: Troy Aksalnik  
P.O. Bag 310  
Rankin Inlet, NU  
X0C 0G0  
Phone: 867-645-6467

- **Rankin Inlet – GN-CGS** - Account W8133  
Cooler 1: 2 sets of Group 1; 2 sets of Group 2  
6 extra bottle sets for both Group 1 & 2

Shipping address: Rankin Inlet – GN-CGS  
ATTN: Megan Muckpah-Gavin  
P.O. Box 490  
Rankin Inlet, NU  
X0C 0G0  
Phone: 867-645-8120

Take Care,



**Megan Muckpah-Gavin**  
Municipal Technical Officer,  
Community & Government Services  
  
**Phone** 867-645-8120  
**Email** [mgavin@gov.nu.ca](mailto:mgavin@gov.nu.ca)

---

**From:** Craig Riddell <[Craig.Riddell@ALSGlobal.com](mailto:Craig.Riddell@ALSGlobal.com)>  
**Sent:** July 6, 2022 3:47 PM  
**To:** Muckpah-Gavin, Megan <[MGavin@GOV.NU.CA](mailto:MGavin@GOV.NU.CA)>  
**Subject:** RE: [EXTERNAL] - DWC/WLM Sample bottles

**CAUTION:** This email originated from outside of the organization. Do not click links or open attachments unless you recognize the sender and know the content is safe.

Hi Megan ,

I am sorry , they have not yet been sent .



right solutions.  
right partner.

Craig Riddell  
Project Manager , Winnipeg Environmental  
**Canada**

O: +204-255-9755

[craig.riddell@alsglobal.com](mailto:craig.riddell@alsglobal.com)

Unit 12 - 1329 Niakwa Road East  
Winnipeg, MB,  
R2J 3T4

[alsglobal.com](http://alsglobal.com)



[EnviroMail 31 Update - Climate Change and Sustainability Action and Outcomes at ALS Canada](#)

[EnviroMail 37 - In Vitro Bioaccessibility of Lead and Arsenic in Soil](#)

[EnviroMail 36 - Ion Balance: Data Quality Validation for Metals & Anions in Waters](#)

[EnviroMail 00 - Summary of all EnviroMails Canada](#)

[How was your ALS experience?](#)

---

**From:** Muckpah-Gavin, Megan <[MGavin@GOV.NU.CA](mailto:MGavin@GOV.NU.CA)>

**Sent:** Wednesday, July 6, 2022 1:43 PM

**To:** Craig Riddell <[Craig.Riddell@ALSGlobal.com](mailto:Craig.Riddell@ALSGlobal.com)>

**Subject:** [EXTERNAL] - DWC/WLM Sample bottles

**CAUTION:** This email originated from outside of ALS. Do not click links or open attachments unless you recognize the sender and are sure content is relevant to you.

Good afternoon Craig,

I am sure you are aware that I have ordered Water Chemistry sampling bottles and Water Licence Monitoring sampling bottles end of May/Early June. Can you please confirm if those bottles were sent to the Kivalliq communities ? Any information would be greatly appreciated

Have a great day !



**Megan Muckpah-Gavin**

Municipal Technical Officer,  
Community & Government Services

**Phone** 867-645-8120

**Email** [mgavin@gov.nu.ca](mailto:mgavin@gov.nu.ca)

**From:** [Muckpah-Gavin, Megan](#)  
**To:** [Duncan, Caroline](#)  
**Subject:** FW: [EXTERNAL] - DWC/WLM Sample bottles  
**Date:** March 7, 2023 10:31:04 AM  
**Attachments:** [image002.png](#)  
[image003.png](#)  
[image004.png](#)  
[image005.png](#)

---

Again...

---

**From:** Craig Riddell <Craig.Riddell@ALSGlobal.com>  
**Sent:** July 6, 2022 3:47 PM  
**To:** Muckpah-Gavin, Megan <MGavin@GOV.NU.CA>  
**Subject:** RE: [EXTERNAL] - DWC/WLM Sample bottles

**CAUTION:** This email originated from outside of the organization. Do not click links or open attachments unless you recognize the sender and know the content is safe.

Hi Megan ,

I am sorry , they have not yet been sent .



right solutions.  
right partner.

Craig Riddell  
Project Manager , Winnipeg Environmental  
**Canada**

O: +204-255-9755

[craig.riddell@alsglobal.com](mailto:craig.riddell@alsglobal.com)

Unit 12 - 1329 Niakwa Road East  
Winnipeg, MB,  
R2J 3T4

[alsglobal.com](http://alsglobal.com)



[EnviroMail 31 Update - Climate Change and Sustainability Action and Outcomes at ALS Canada](#)  
[EnviroMail 37 - In Vitro Bioaccessibility of Lead and Arsenic in Soil](#)  
[EnviroMail 36 - Ion Balance: Data Quality Validation for Metals & Anions in Waters](#)  
[EnviroMail 00 - Summary of all EnviroMails Canada](#)

[How was your ALS experience?](#)

---

**From:** Muckpah-Gavin, Megan <[MGavin@GOV.NU.CA](mailto:MGavin@GOV.NU.CA)>  
**Sent:** Wednesday, July 6, 2022 1:43 PM

**To:** Craig Riddell <[Craig.Riddell@ALSGlobal.com](mailto:Craig.Riddell@ALSGlobal.com)>

**Subject:** [EXTERNAL] - DWC/WLM Sample bottles

**CAUTION:** This email originated from outside of ALS. Do not click links or open attachments unless you recognize the sender and are sure content is relevant to you.

Good afternoon Craig,

I am sure you are aware that I have ordered Water Chemistry sampling bottles and Water Licence Monitoring sampling bottles end of May/Early June. Can you please confirm if those bottles were ever sent to the Kivalliq communities ? Any information would be greatly appreciated

Have a great day !



**Megan Muckpah-Gavin**

Municipal Technical Officer,  
Community & Government Services

**Phone** 867-645-8120

**Email** [mgavin@gov.nu.ca](mailto:mgavin@gov.nu.ca)