

 A = DETAIL NO.

 B = LOCATION DRAWING NO.

No.	Date	Description	Ck/Ck
0	04 Apr.	ISSUED FOR TENDER	MA



Design	DTD
Drawn	DTD
Approved Chief	MAL
Director	

UTILIDOR REPLACEMENT-
AREA 1
RANKIN INLET, NU

ACCESS VAULTS STANDARD DETAILS

AS NOTED

Project No.	Date
00 - 3049	April 200

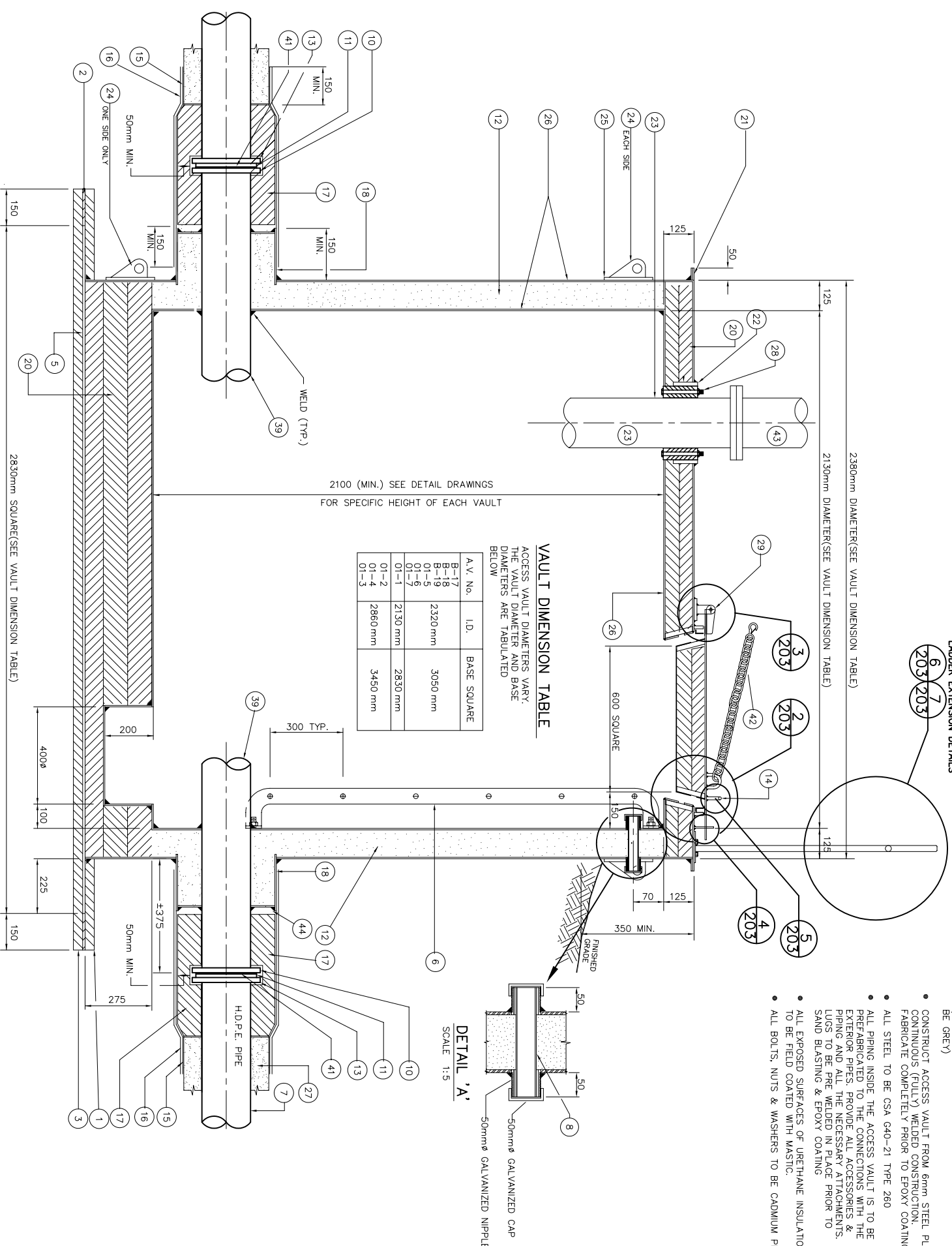
Drawing No.	Revision
74532-201	0

GENERAL NOTES:

- FILL VOID BETWEEN PRE-INSULATED PIPE AND PRE-FORMED INSULATION HALF-SHELLS WITH FOAMED-IN-PLACE URETHANE
- ALL PREFABRICATED STEEL PARTS OF ACCESS VAULT SHALL BE SAND BLASTED AND EPOXY COATED INSIDE AND OUTSIDE EXCEPT TOP TO BE GALVANIZED (INSIDE COLOUR TO BE WHITE, OUTSIDE COLOR TO BE GREY)
- CONSTRUCT ACCESS VAULT FROM 6mm STEEL PLATE WITH CORNERS (T) WELDED TO INSULATION AND FABRICATE COMPLETELY PRIOR TO EPOXY COATING.
- ALL STEEL TO BE CSA G40-21 TYPE 260
- ALL PIPING INSIDE THE ACCESS VAULT IS TO BE PREFABRICATED TO THE CONNECTIONS WITH THE EXTERIOR PIPES, PROVIDE ALL ACCESSORIES & FITTINGS AND ALL THE NECESSARY ATTACHMENTS, LUGS TO BE PRE WELDED IN PLACE PRIOR TO SAND BLASTING & EPOXY COATING
- ALL EXPOSED SURFACES OF URETHANE INSULATION TO BE FIELD COATED WITH MASTIC.
- ALL BOLTS, NUTS & WASHERS TO BE CADMIUM PLATED

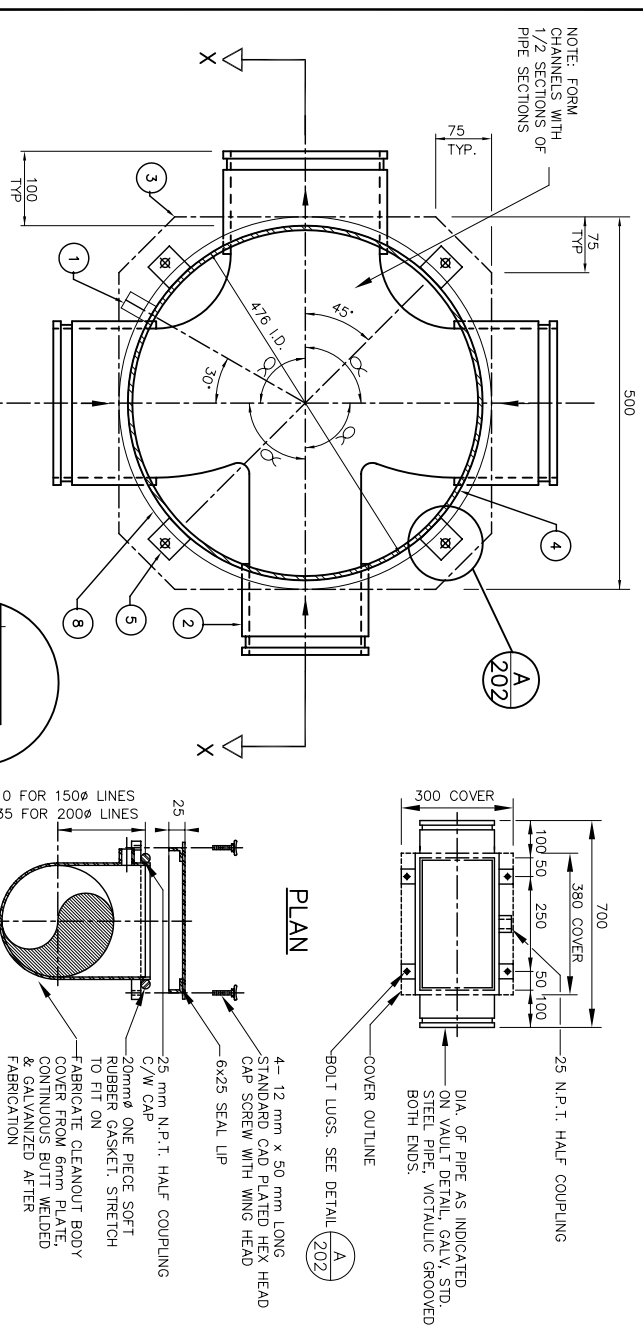
KEY TO NUMBERED PARTS

- | | |
|----|--|
| 1 | 38mm THICK STYROFOAM, CUT TO MATCH EXTERIOR WALL RADIIUS. |
| 2 | FILLER PIECE, 10mm THICK INSULATION. |
| 3 | 38mm THICK STYROFOAM INSULATION. |
| 4 | 20mm THICK HIGH DENSITY POLYETHYLENE SHEET. |
| 5 | 10mm THICK x (SEE DIMENSION TABLE) SQUARE STEEL BASE |
| 6 | LADDER LENGTH AS REQUIRED. SEE DETAIL DRAWING 74532-202 |
| 7 | I.P.S. H.D.P.E. PIPE D.R.11 |
| 8 | 37mmø PVC CONDUIT (ELECTRICAL) SEE DETAIL 'A'. |
| 9 | 20 GAUGE METAL (DO NOT USE 6mm PLATE), FORGED STEEL FLANGE WELDED TO STEEL PIPE, 1035 KPA, ASA B 16.1, SIZE TO SUIT, FLAT FACED. |
| 10 | P.E. STUB END BUTT FUSED TO H.D.P.E. PIPE. |
| 11 | FOAMED-IN-PLACE INSULATION (URETHANE). |
| 12 | STEEL (GALVANIZED) SLIP-ON FLANGE TO SUIT H.D.P.E. PIPE |
| 13 | STUB, DRILL TO ANSI B16.5 BOLT CIRCLES |
| 14 | HANDLE, 12mmø GALVANIZED STEEL |
| 15 | FIRST LAYER OF HEAT SHRINK SLEEVE (0.9mm) THICK BLACK POLYETHYLENE SELF ADHESIVE). |
| 16 | SECOND LAYER OF HEAT SHRINK SLEEVE (SAME AS ITEM 15 ABOVE). |
| 17 | INSULATED COVER FOR FLANGED JOINT, O.D. TO MATCH O.D. OF ITEM (19) SIZE TO SUIT, MASTIC COATED. |
| 18 | OUTER STEEL SLEEVE SECTION WELDED TO ACCESS VAULT OUTER WALL, 10mm THICK PROTRUDING 200 mm, 350 mm FOR 100mm Ø, 350 mm FOR 150 mm Ø |
| 19 | 10mm x 50mm CONTINUOUSLY WELDED TO EXTERIOR BARREL |
| 20 | URETHANE SHEET INSULATION CUT TO SIZE. |
| 21 | 12mm CAD. PLATED STEEL BOLT, NUT & WASHER, 150mm SPACING. |
| 22 | 350mmø STD (346mm I.D.) STEEL PIPE x 100mm LONG, WELDED TO ACCESS VAULT, GALV. |
| 23 | HYDRANT BARREL (MEANITY M67 204.8 O.D.) |
| 24 | LIFTING LUGS - THREE PER ACCESS VAULT 150mm x 75mm x 12mm THICK WITH 38mmø LIFTING EYE |
| 25 | REINFORCING PLATE 200mm x 200mm x 12mm CURVED TO EXTERIOR WALL RADIIUS |
| 26 | 6mm THICK STEEL PLATE ACCESS VAULT CONSTRUCTION. |
| 27 | 75mm URETHANE PIPE INSULATION, SHOP APPLIED. |
| 28 | LINK SEAL |
| 29 | HINGES SPACED AT 400mm APART, SEE DETAIL 3/201 |
| 30 | GASKET 50mm x 3mm COMPRESSIBLE NEOPRENE RUBBER. |
| 31 | #12-30 PAN HEAD SHEET METAL SCREWS AT 100mm SPACING. |
| 32 | HASP ASSEMBLY, SEE DETAIL 4/201 |
| 33 | 12mm x 38mm x 500mm STEEL BAR ALL AROUND HATCH (INSIDE HINGES), TAPPED FOR (36) 20mm x 38mm CLOSED CELL NEOPRENE STOPLOBS, OR EQUAL. |
| 34 | PERMASTIK 1220X, OR EQUAL. |
| 35 | 6mm GALVANIZED BOLT NUT & WASHER AT 100mm SPACING. |
| 36 | 6mm x 31mm CAD. PLATED STEEL BOLT 150mm SPACING. |
| 37 | 6.5mm x 17mm SPACER, GALVANIZED PIPE. |
| 38 | 3mm x32mm x 20mm GALVANIZED IRON. |
| 39 | SCHEDULE 80 STEEL PIPE, SIZE TO SUIT. |
| 40 | 38mm WIDE TEFELON TAPE, LOW TEMPERATURE ADHESIVE, 15mil. |
| 41 | FULL FACE NEOPRENE GASKET AS PER SPECIFICATION (NOT WITH HEAVY CLOTH INSERT) |
| 42 | 1000mm LONG GRADE 30 REGULAR LINK CHAIN WITH SAFETY HOOK |
| 43 | c/w SNAP LINKS ON BOTH SIDES |
| 44 | HYDRANT (MEANITY M-67) AS PER SPECS |
| 45 | 10mm STEEL RING TO MATCH 6mm WELD TO OUTER SLEEVE AND STEEL PIPE |
| 46 | 10mm THICK STEEL PLATE, 50mm x 225mm |
| 46 | 25mmø GALVANIZED STEEL BAR |

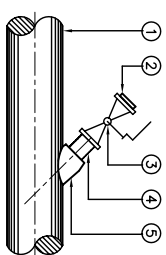


1 STEEL PREFABRICATED ACCESS VAULT TYPICAL SECTION
201 SCALE 1:10

SCALE 1:10

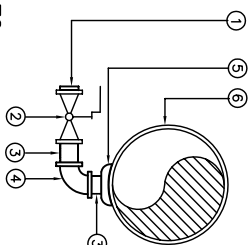


**KEY TO
NUMBERED PARTS**



- ## KEY TO NUMBERED PARTS
-
- | | |
|---|------------------------------|
| ① | 25mm Ø N.P.T. PLUG |
| ② | 25mm Ø BALL VALVE |
| ③ | 25mm Ø N.P.T. NIPPLE |
| ④ | 25mm Ø -90° GALVANIZED ELBOW |
| ⑤ | 25mm Ø THREADOLET |
| ⑥ | WATERMAN |

KEY TO
NUMBERED PARTS



TYPICAL DETAIL
150 mm Ø AND LARGER
LATROLET CONNECTION

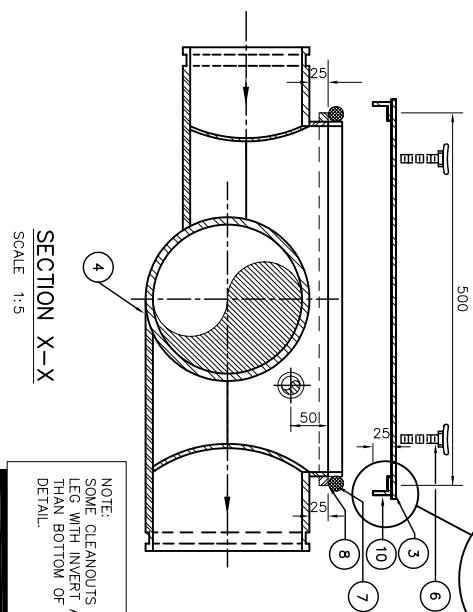
- ALL FITTINGS GALVANIZED AFTER FABRICATION

3 TYPICAL DETAIL
150 mm Ø AND LARGER
WATERMAIN DRAIN

- ⑥ WATERMAIN
* ALL FITTINGS GALVANIZED AFTER FABRICATION

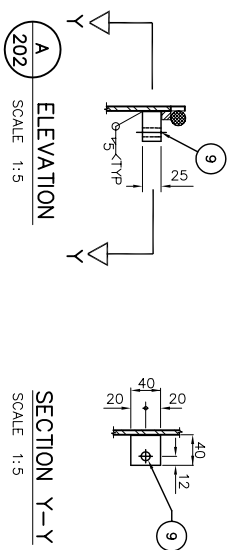


CLEANOUT - TYPE 2
NOT TO SCALE



NOTE: SOME CLEANOUTS ARE NOTED TO HAVE ONE LEG WITH INVERT AT CLEANOUT 100mm HIGHER THAN BOTTOM OF CLEANOUT. SEE SPECIFIC AV DETAIL.

CLEANOUT - TYPE 1

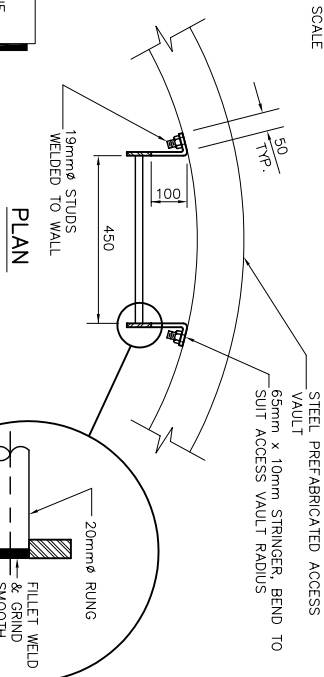


KEY TO NUMBERED PARTS (CLEANOUT ONLY)

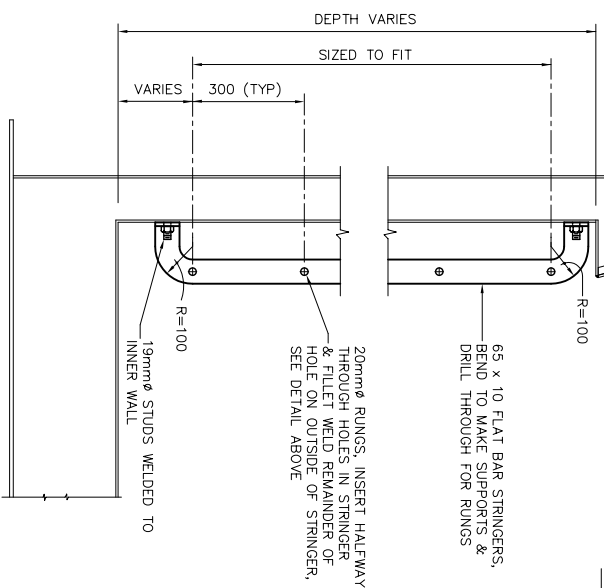
- 1 25 N.P.T. HALF COUPLING c/w NIP & CAP
- 2 SCH. 40 STEEL PIPE NIPPLE W/TAULIC GROOVED, SIZED TO SUIT.
- 3 CLEANOUT COVER AND SEAL, LIP FABRICATED FROM 6mm THICK PLATE, CONTINUOUS BUTT WELDED AND HOT DIPPED GALVANIZED AFTER FABRICATION.
- 4 CLEANOUT BODY FABRICATED FROM 6mm THICK PLATE CONTINUOUS BUTT WELDED AND HOT DIPPED GALVANIZED AFTER FABRICATION.
- 5 BOLT LUGS TAPPED
- 6 12 mm x 50 mm LONG CAD PLATED HEX HEAD CAP SCREW WITH WING HEAD
- 7 20mmØ ONE PIECE SOFT RUBBER GASKET, STRETCH TO FIT COVER
- 8 12mm SQUARE ROD RIM
- 9 DRILL AND TAP 12mm.
- 10 25 x 25 x 6 L FOR LIP SEAL

NOTES:

SEE INDIVIDUAL ACCESS VAULT DETAIL DRAWINGS
FOR NUMBER AND SIZE OF SEWER STUBS NEEDED
AT EACH ACCESS VAULT AND FOR ANGLE
BETWEEN STUBS.



PLAN

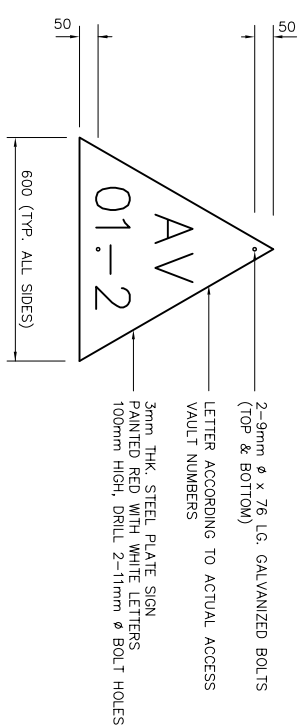


ELEVATION

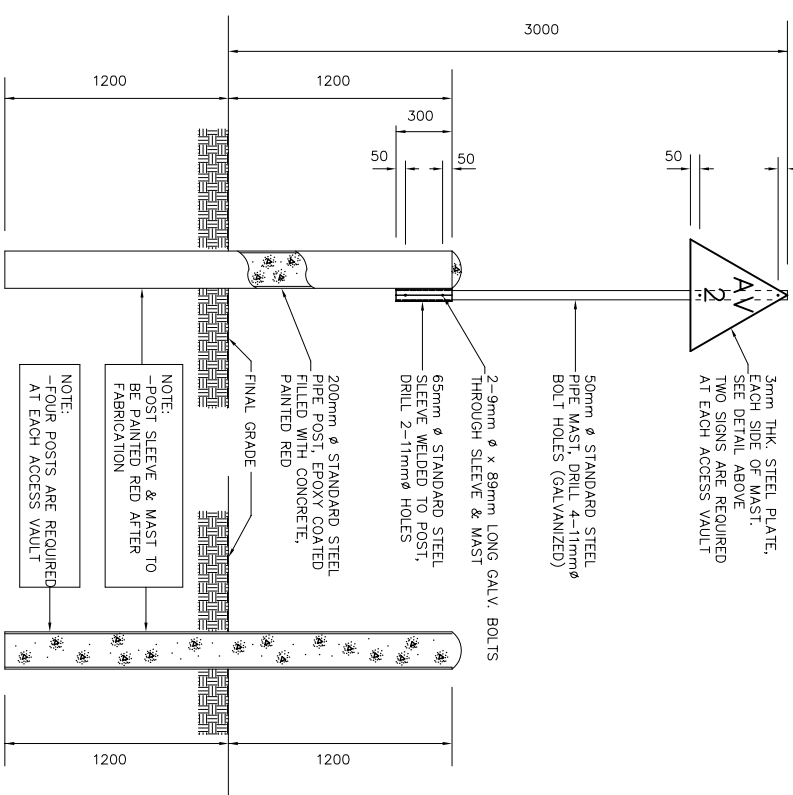
NOTE
EPOXY COATED AFTER FABRICATION

ACCESS VAULT LADDER DETAIL

SCALE 1:10



DETAIL
SCALE 1:10



ACCESS VAULT MARKER POST

SCALE 1:20


BOLLARD

SCALE 1:20



GENERAL NOTES:

- (1) FILL VOID BETWEEN PIPE AND INSULATED COVER WITH FOAMED-IN-PLACE URETHANE.
- (2) ALL PREFABRICATED STEEL PARTS OF ACCESS VAULTS SHALL BE SAND BASTED AND EPOXY COATED. ALL STEEL PARTS OF ACCESS VAULTS SHALL BE GALVANIZED (INSIDE COLOR TO BE WHITE, OUTSIDE COLOR TO BE GREY).
- (3) CONSTRUCT ACCESS VAULT FROM STEEL PLATE WITH CONTINUOUS (FULLY) WELDED CONSTRUCTION. FABRICATE COMPLETELY PRIOR TO EPOXY COATING.
- (4) ALL STEEL TO BE CSA 640-21 TYPE 260
- (5) ALL PIPING INSIDE THE ACCESS VAULT IS TO BE PREFABRICATED TO THE CONNECTIONS WITH THE EXTERIOR PIPES. PROVIDE ALL ACCESSORIES AND PIPING AND ALL THE NECESSARY ATTACHMENTS, LUGS TO BE PER WELDED IN PLACE PRIOR TO SAND BASTING & EPOXY COATING
- (6) ALL EXPOSED SURFACES OF IRRADIANT INSULATION TO BE FIELD COATED WITH MASTIC.
- (7) ALL BOLTS, NUTS & WASHERS TO BE CADMIUM PLATED

 A = DETAIL No.
B = LOCATED ON DRAWING No.

0	04 Apr.	ISSUED FOR TENDER	MA
No.	Date	Description	Chkd
REVISIONS			



Design	DTD
Drawn	DTD
Approved Chief	MAI
Director	

UTILIDOR REPLACEMENT
AREA 1
RANKIN INLET, NU

--	--

ACCESS VAULTS STANDARD DETAILS

Scale

Project No.	Date
00 - 3049	April 200
Drawing No.	Revision

KEY TO NUMBERED PARTS

- | | |
|----|--|
| 1 | 38mm THICK STYROFOAM, CUT TO MATCH EXTERIOR WALL RADIUS. |
| 2 | FILLER PIECE, 10mm THICK INSULATION. |
| 3 | 38mm THICK STYROFOAM INSULATION. |
| 4 | 20mm THICK HIGH DENSITY POLYETHYLENE SHEET. |
| 5 | 10mm THICK x (SEE DIMENSION TABLE) SQUARE STEEL BASE |
| 6 | LADDER LENGTH AS REQUIRED, SEE DETAIL DRAWING 74532-202 |
| 7 | 1/2" S. H.D.P.E. PIPE D.R.#11 |
| 8 | 37mmø PVC CONDUIT (ELECTRICAL) SEE DETAIL 'A'. |
| 9 | 20 GAUGE METAL (DO NOT USE 6mm PLATE). FORCED STEEL FLANGE WELDED TO STEEL PIPE, 1035 KPA, ASA B 16.1, SIZE TO SUIT, FLAT FACED. |
| 10 | P.E. STUB END BUTT FUSED TO H.D.P.E. PIPE. |
| 11 | |
| 12 | FOAMED-IN-PLACE INSULATION (URETHANE). |
| 13 | STEEL (GALVANIZED) SLIP-ON FLANGE TO SUIT H.D.P.E. PIPE |
| 14 | STUB, DRILL TO ANSI B16.5 BOLT CIRCLES HANDLE, 12mmø GALVANIZED STEEL |
| 15 | FIRST LAYER OF HEAT SHRINK SLEEVE (0.3mm) THICK BLACK POLYETHYLENE SELF ADHESIVE). |
| 16 | SECOND LAYER OF HEAT SHRINK SLEEVE (SAME AS ITEM 15 ABOVE). |
| 17 | INSULATED COVER FOR FLANGED JOINT, O.D. TO MATCH O.D. OF ITEM (16) SIZE TO SUIT, MASTIC COATED. |
| 18 | OUTER STEEL SLEEVE SECTION WELDED TO ACCESS VAULT OUTER WALL, 10 mm THICK PROTRUDING 200 mm, O.D. 445 mm FOR 200 mm ø , 380 mm FOR 150 mm ø 330 mm FOR 100mm ø |
| 19 | 10mm x 50mm CONTINUOUSLY WELDED TO EXTERIOR BARREL |
| 20 | URETHANE SHEET INSULATION CUT TO SIZE. |
| 21 | 12mm CAD. PLATED STEEL BOLT, NUT & WASHER, 150mm SPACING. |
| 22 | 350mmø STD.(346mm I.D.) STEEL PIPE x 100mm LONG, WELDED TO ACCESS VAULT, GALV. |
| 23 | HYDRANT BARREL (MCWATY M67 204.8 O.D.) |
| 24 | LIFTING LUGS – TWO PER ACCESS VAULT 150mm x 75mm x 12mm THICK WITH 38mmø LIFTING EYE |
| 25 | REINFORCING PLATE 200mm x 200mm x 12mm CURVED TO EXTERIOR WALL RADIUS |
| 26 | 6mm THICK STEEL PLATE ACCESS VAULT CONSTRUCTION. |
| 27 | 75mm URETHANE PIPE INSULATION, SHOP APPLIED. |
| 28 | LINK SEAL |
| 29 | HINGES SPACED AT 400mm APART, SEE DETAIL 3/201 |
| 30 | GASKET 50mm x 3mm COMPRESSIBLE NEOPRENE RUBBER. |
| 31 | #12-30 PAN HEAD SHEET METAL SCREWS AT 100mm SPACING. |
| 32 | HASP ASSEMBLY, SEE DETAIL 4/201 |
| 33 | 12mm x 38mm x 500mm STEEL BAR ALL AROUND HATCH (INSIDE HINGES), TAPPED FOR (36) 20mm x 38mm CLOSED CELL NEOPRENE ASTM D1056-85, GRADE 2AL-CET/FL2MP PERMASTIK 1220X OR EQUAL |
| 34 | 6mm GALVANIZED BOLT NUT & WASHER AT 100mm SPACING. |
| 35 | 6mm x 31mm CAD. PLATED STEEL BOLT 150mm SPACING. |
| 36 | 6.5mm x 17mm SPACER, GALVANIZED PIPE. |
| 37 | 3mm x32mm x 20mm GALVANIZED IRON. |
| 38 | |
| 39 | SCHEDULE 80 STEEL PIPE, SIZE TO SUIT. |
| 40 | 38mm WIDE TEFLON TAPE, LOW TEMPERATURE ADHESIVE, 15mm. |
| 41 | FULL FACE NEOPRENE GASKET AS PER SPECIFICATION (NOT WITH HEAVY CLOTH INSERT) |
| 42 | 1000mm LONG GRADE 30 REGULAR LINK CHAIN WITH SAFETY HOOK |
| 43 | C/W SNAP LINKS ON BOTH SIDES |
| 44 | HYDRANT (MCWATY M-67) AS PER SPECS |
| 45 | 10mm STEEL RING TO MATCH 6mm WELD TO OUTER SLEEVE AND STEEL PIPE |
| 46 | 10mm THICK STEEL PLATE, 50mm x 225mm |
| 46 | 25mmø GALVANIZED STEEL BAR |

PARTS MARKED AS *
SEE DETAILS ON DRAWING 20.

**PERMIT TO PRACTICE
EARTH TECH (CANADA) INC.**

Signature _____

Date _____

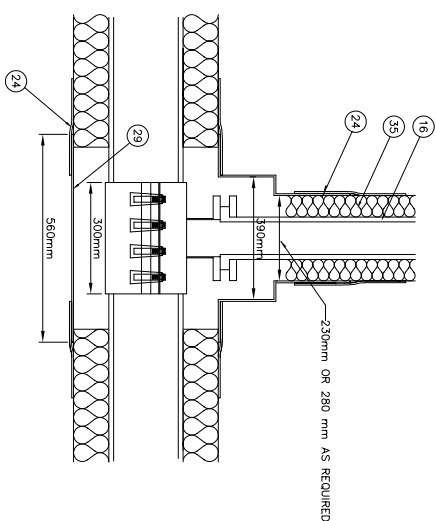
PERMIT NUMBER: P 005

The Association of Professional Engineers,
Geologists and Geophysicists of the NWT/NU

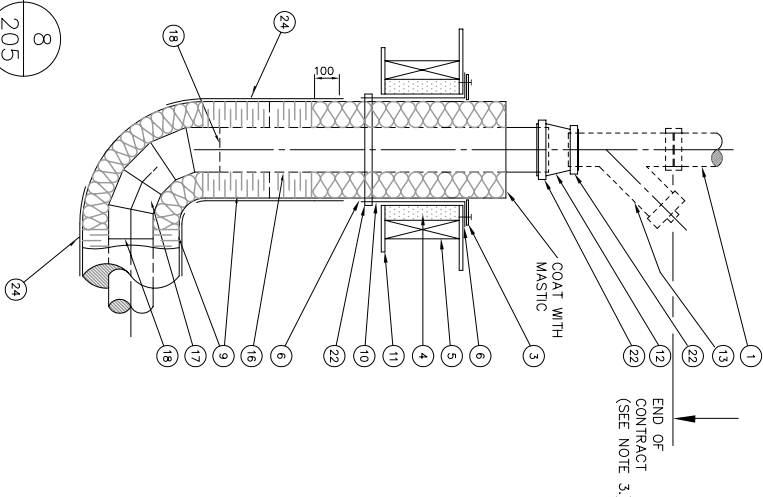


GENERAL NOTES:

1. ALL DIMENSIONS ARE IN MILLIMETRES UNLESS NOTED OTHERWISE.
2. ALL EXPOSED SURFACES INCLUDING FACTORY COATED SURFACES, OF POLYURETHANE TO BE FIELD COATED WITH MASTIC.
3. THE INSIDE SURFACES OF METAL, ON DETAIL 9, SHALL BE COATED WITH ESSL EPIC-102 GREASE.
4. SUPPLY AND INSTALL ALL PARTS FOR COMPLETE SERVICE CONNECTIONS AND LINES TO LOCATIONS AS SHOWN ON PLAN PROFILE DRAWINGS.

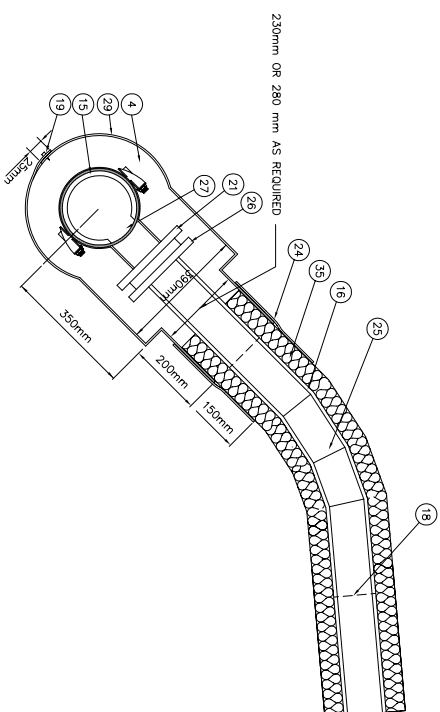


DETAIL 7
N.T.S. 205
(TYPICAL SEWER SERVICE STUB FRONT VIEW)

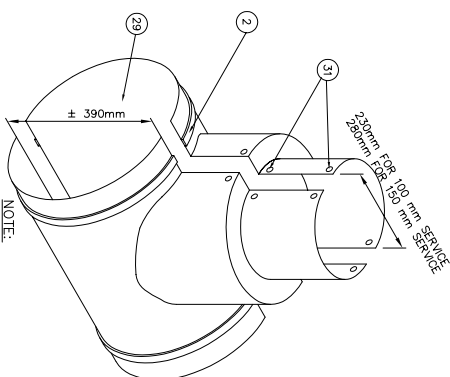


DETAIL 8
N.T.S.

(TYPICAL SANITARY SEWER RISER)
SEE DETAIL 10 DWG. 207



DETAIL 6
N.T.S. 205
(TYPICAL SEWER SERVICE CONNECTION AT MAIN)



SEE DETAIL 1 THIS DRAWING.

DETAIL 9

N.T.S.

(STEEL SEWER SERVICE INSULATION FORM)

KEY TO NUMBERED PARTS:

- 1 EXISTING 75mm DIA. ABS PIPE.
- 2 STAINLESS STEEL BAND-IT CUTS #M211
- 3 250mm DIA 207 #9 BACKING FLANGE, HOT DIPPED GALVANIZED, SCREWED TO FLOOR, RESTORE FLOOR TO EXISTING CONDITION.
- 4 POLYURETHANE INSULATION FROM PORTABLE FOAM PACK.
- 5 FLOOR JOIST - EXISTING.
- 6 SILICON CAULKING
- 7 =NUMBER NOT USED=
- 8 POLYURETHANE HALF SHELLS CUT TO LENGTH (OR FIELD APPLIED FOAM), COATED WITH ASPHALT MASTIC AND HEAT SHRINK.
- 9 600 mm LONG SLEEVE WITH 100 m WIRE COLLAR MANUFACTURED BY REEVES BROTHERS INC.
- 10 COVERITE TL-16, 240 mm Ø (100 Ø CARRIER PIPE) OR 285 mm Ø (150 mm Ø CARRIER PIPE)
- 11 RESTORE SOFFIT TO ORIGINAL CONDITION OR REPAIR w/ 20mm THICK PLYWOOD GLED & SCREWED TO BOTTOM OF JOISTS.
- 12 100mm DIA x 75mm DIA FERRO SERIES 1056-43 COUPLING, (SIZE TO SUIT FOR 150 mm Ø SERVICE)
- 13 75mm DIA. ABS CLEANOUT WITH THREADED PLUG AS REQUIRED.
- 14 SANITARY MAIN, HDPE PIPE DR11 150mm OR 200mm DIA. WITH 75mm NOMINAL POLYURETHANE AND FACTORY INSTALLED JACKET.
- 15 SANITARY SERVICE, HDPE IPS DR-13.5 WITH 50mm NOMINAL POLYURETHANE AND FACTORY INSTALLED JACKET. (100 mm Ø OR 150 mm Ø AS REQUIRED)
- 16 LONG RADIUS 90° ELBOW WITH FACTORY APPLIED POLYURETHANE INSULATION WITH REINFORCED JACKET.
- 17 FIELD BUTT FUSION JOINT MADE BY QUALIFIED AND LICENSED JOINTING TECHNICIAN.
- 18 No. 8 x 13mm CADMIUM PLATED SHEET METAL SCREWS.
- 19 STAINLESS STEEL OUTLET SLEEVE, 100mm NOMINAL OUTLET SIZE, ROBAR 6626 C/W 10mm NC 1304 STAINLESS STEEL FASTENERS.
- 20 STAINLESS STEEL TRIDENT HAS 152 GEAR CLAMPS.
- 21 HEAT SHRINK, 150mm OVERLAP ON SHELLS AND PIPE JACKET.
- 22 HDPE DR11 45° BEND, FACTORY MANUFACTURED, 100 mm Ø OR 150 mm Ø AS REQUIRED
- 23 DUCTILE IRON SLIP ON FLANGE SUITABLE FOR USE WITH HDPE PIPE.
- 24 HOLE FOR SERVICE TO BE DRILLED IN MAIN WITH HOLE SAW.
- 25 GALVANIZED SHEET STEEL FORM.
- 26 HOLES TO BE DRILLED IN FIELD TO BE SUIT.
- 27 FACTORY APPLIED 50mm NOM. POLYURETHANE INSULATION WITH POLYETHYLENE JACKET.

[illegible]

Design	DTD
Drawn	DTD
Approved Chief	MAL
Director	

UTILIDOR REPLACEMENT
AREA 1
RANKIN INLET, NU

Drawing Title	TYPICAL SEWER SERVICE DETAILS
---------------	----------------------------------

Scale	AS NOTED
Project No.	Date
00 - 3049	April 200
Drawing No.	Revision
74532-205	0

PERMIT TO PRACTICE
EARTH TECH (CANADA) INC.

Signature _____
Date _____
PERMIT NUMBER: P 005
This permit is issued pursuant to the
Geologists and Geophysicists of the AMNTNU



No.	Date	Description	Chkd
1	05 Aug	ADDED CLEANOUT	MAL
0	04 Apr.	ISSUED FOR TENDER	MAL

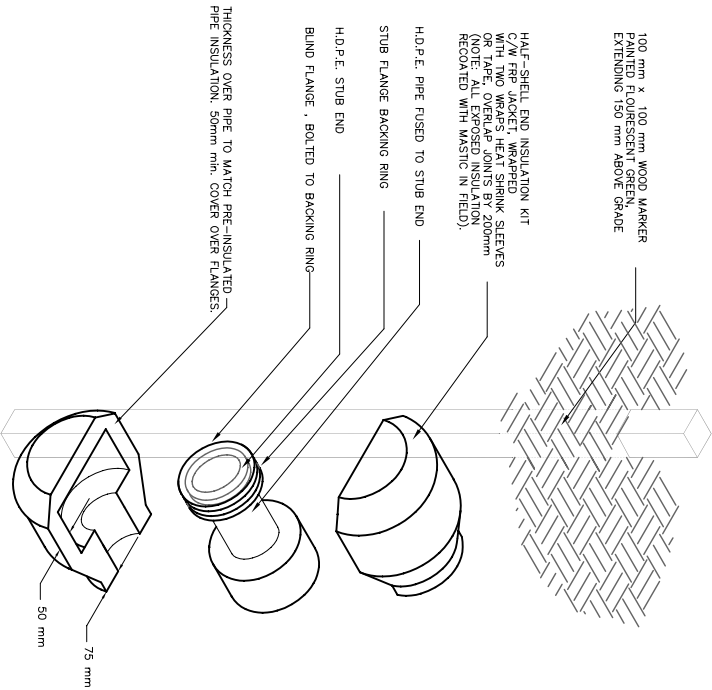
No.	Date	Description	Chkd
1	05 Aug	ADDED CLEANOUT	MAL
0	04 Apr.	ISSUED FOR TENDER	MAL



Design	DTD
Drawn	DTD
Approved	MAL
Chief	MAL
Director	
Project Title	UTLIDOR REPLACEMENT AREA 1 RANKIN INLET, NU

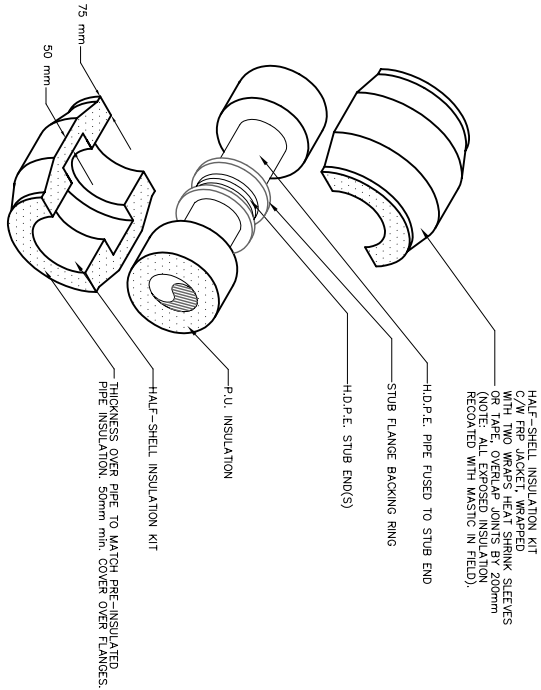
TRENCH DETAILS

Scale	AS NOTED
Project No.	00 — 3049
Drawing No.	74532-206
Revision	1



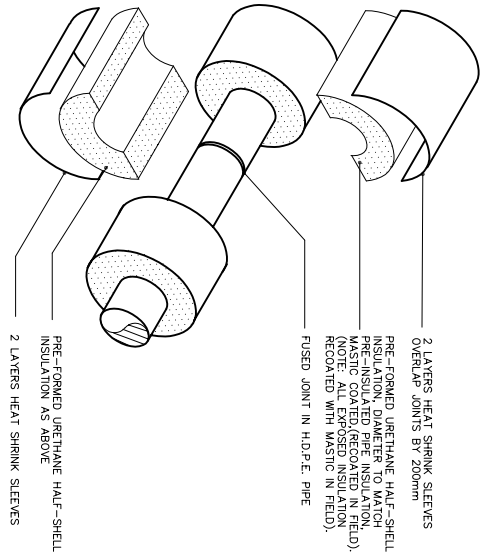
PIPE STUB AND MARKER DETAIL

NOT TO SCALE



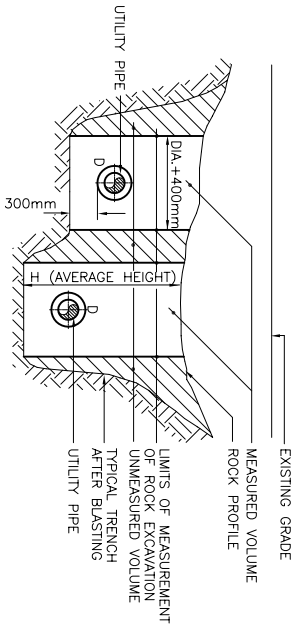
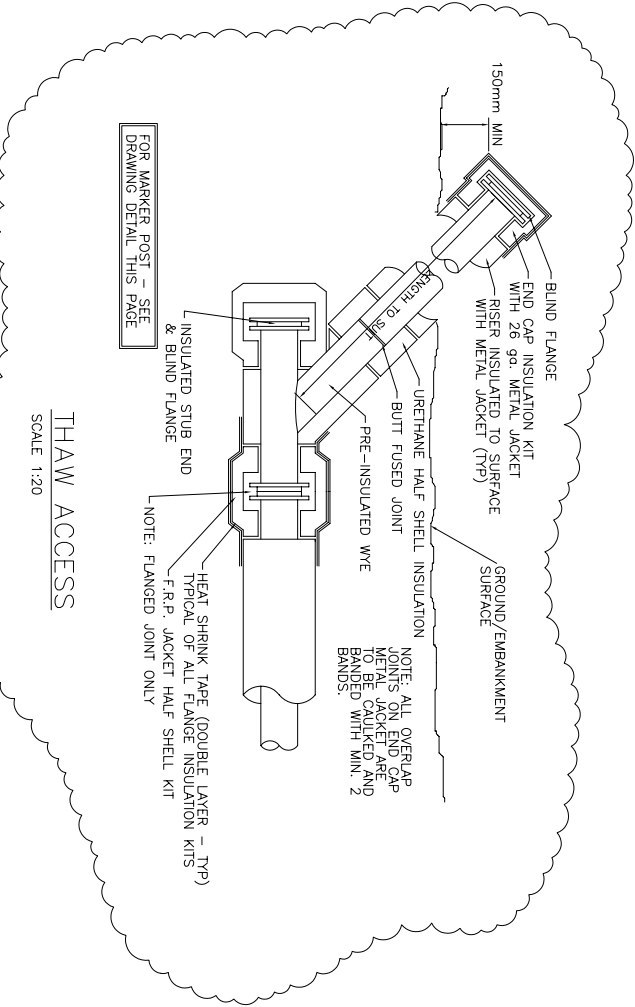
FLANGED JOINT INSULATION DETAIL

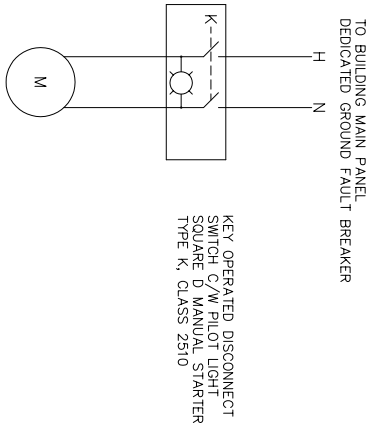
NOT TO SCALE



JOINT INSULATION DETAIL (TYPICAL)

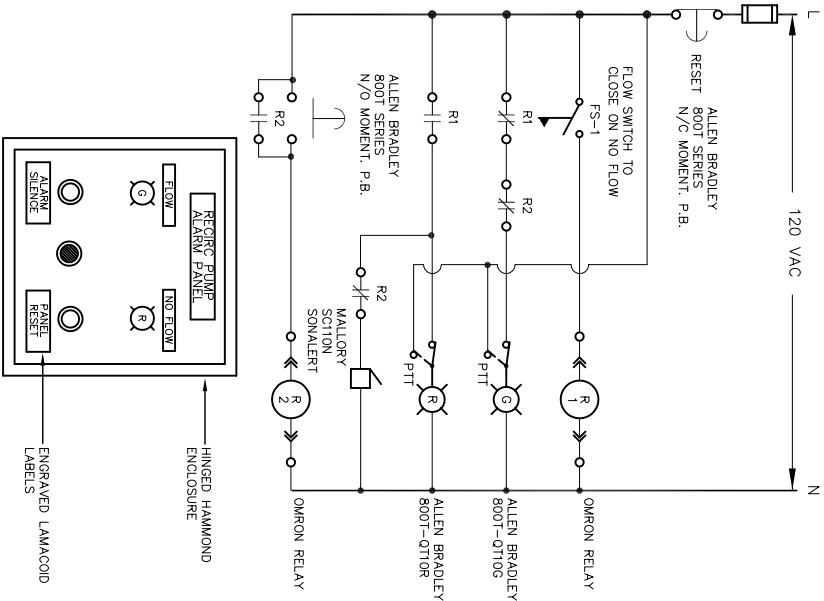
NOT TO SCALE





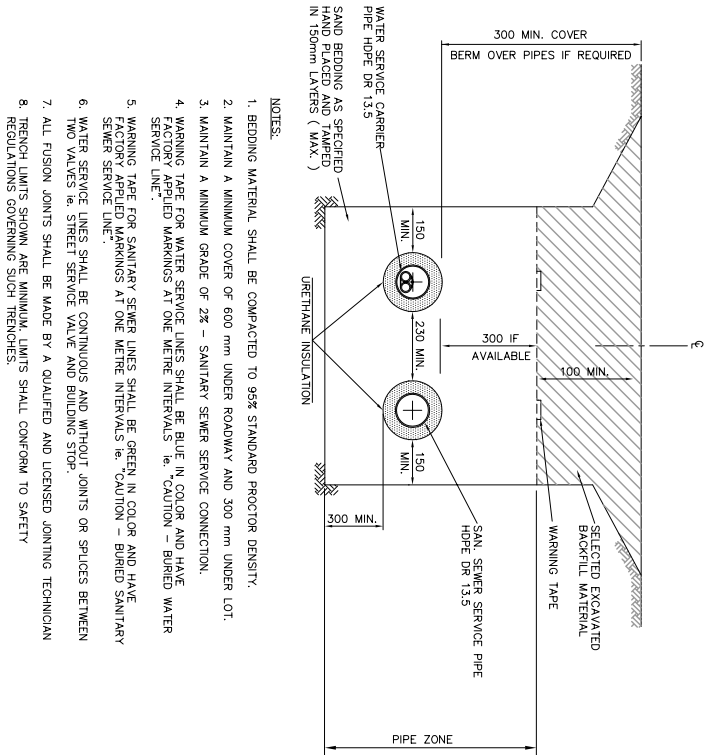
CIRCULATING PUMP SCHEMATIC

N.T.S.



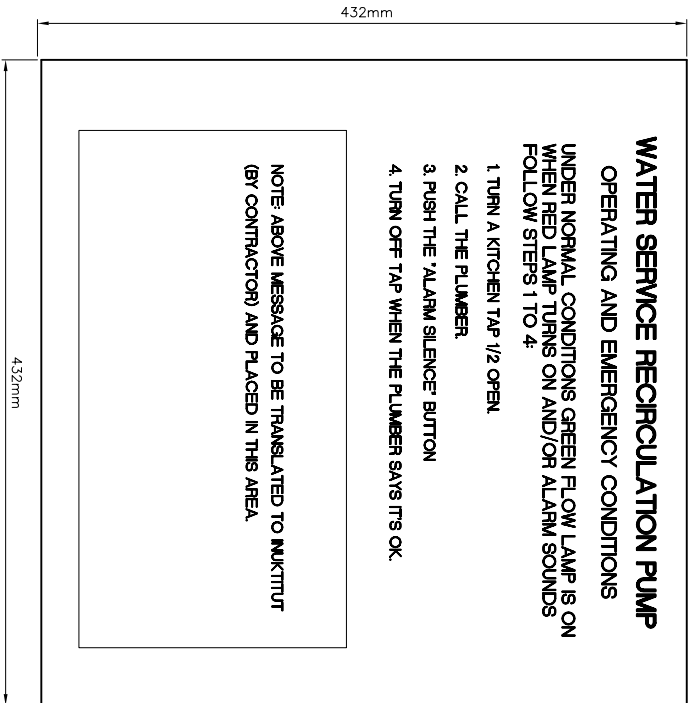
FREEZE PROTECTION ELECTRICAL SCHEMATIC

N.T.S.

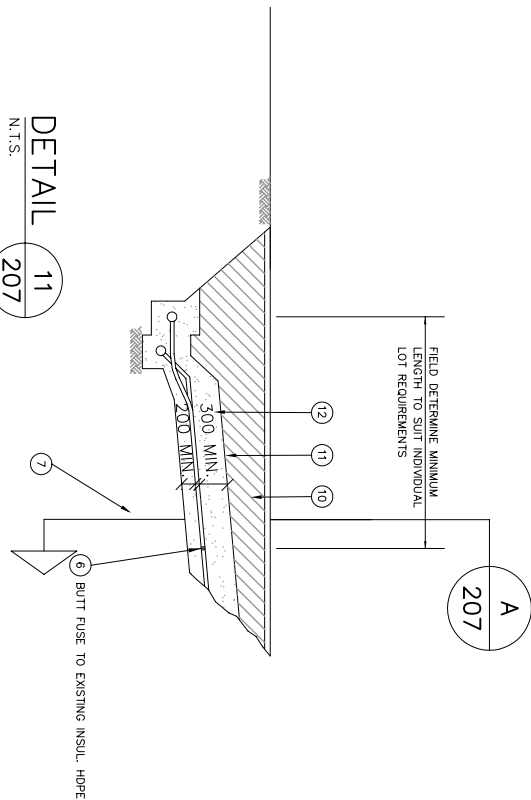


SECTION A 207

N.T.S.



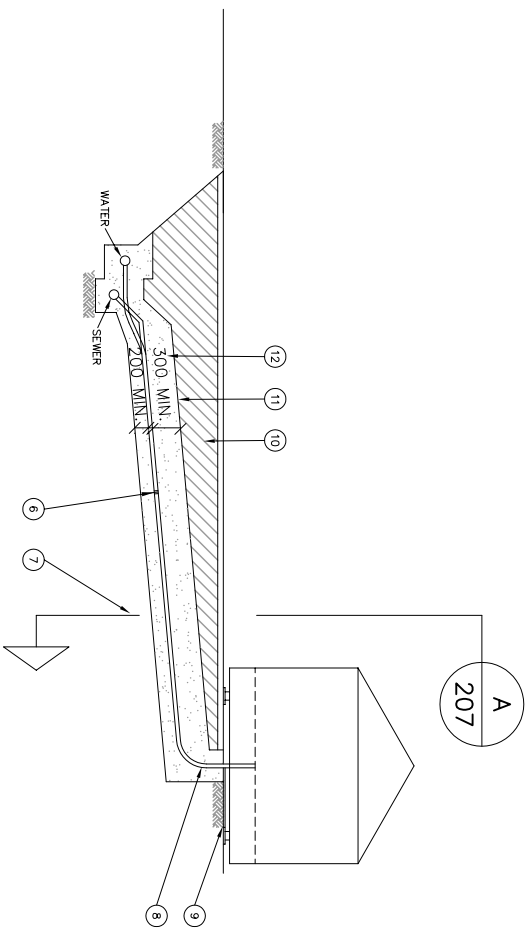
SIGN TO BE POSTED NEAR ALARM PANEL



DETAIL 11 207

N.T.S.

(TYPICAL WATER AND SANITARY SEWER
SERVICE CONNECTION, EXISTING INSUL. HDPE
SEWER & INSUL. HDPE WATER CARRIER PIPES)



- ⑥ SEE DETAIL 5 (DWG. 204)
⑦ SEE SECTION A (THIS DWG.)
⑧ SEE DETAILS 3 (DWG. 204) AND 8 (DWG. 205)
⑨ HOUSE FOUNDATION / SUPPORT
⑩ BACKFILL MATERIAL
⑪ WARNING TAPE
⑫ BEDDING MATERIAL

DETAIL 10 207

N.T.S.

(TYPICAL WATER AND SANITARY SEWER
SERVICE CONNECTION, COMPLETE TO HOUSE)



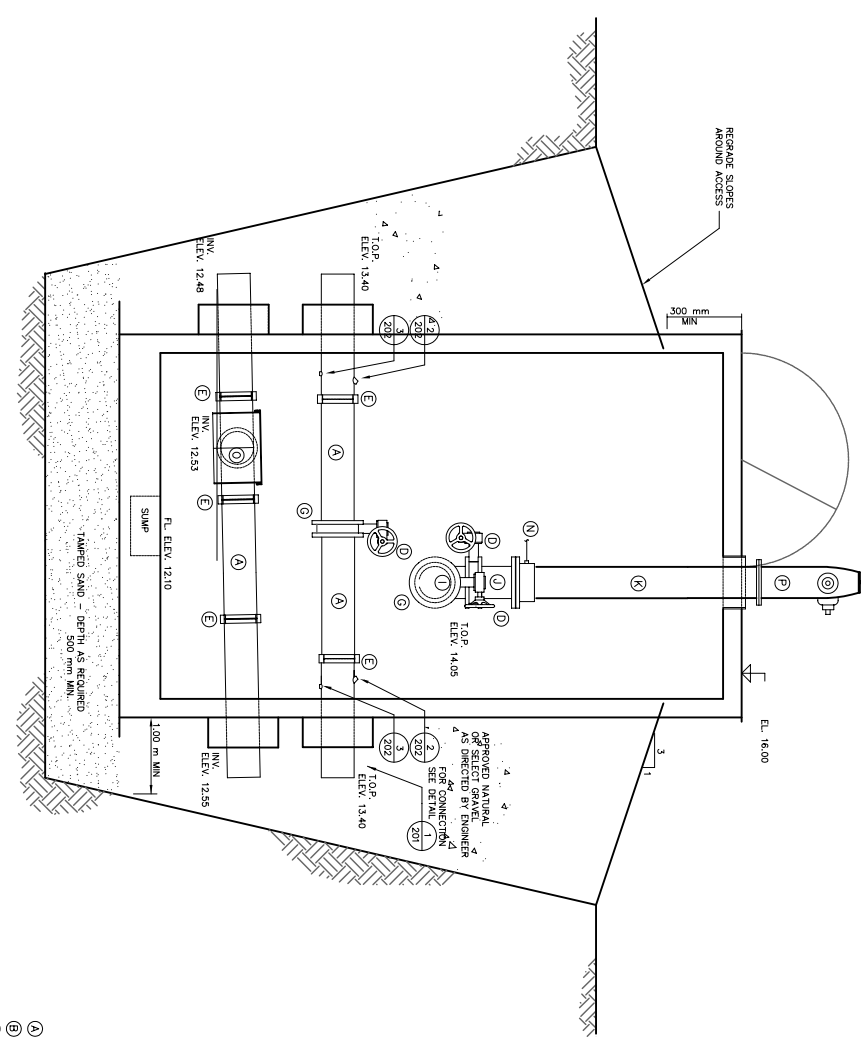
REVISIONS		
No.	Date	Description
04	Apr.	ISSUED FOR TENDER
0		

Design	DTD
Drawn	DTD
Approved	MAL
Chief	
Director	

UTILIDOR REPLACEMENT
AREA 1
RANKIN INLET, NU

MISCELLANEOUS
SERVICE DETAILS

Scale	AS NOTED
Project No.	00 - 3049
Drawing No.	74532-207
Revision	0
Date	April 2004

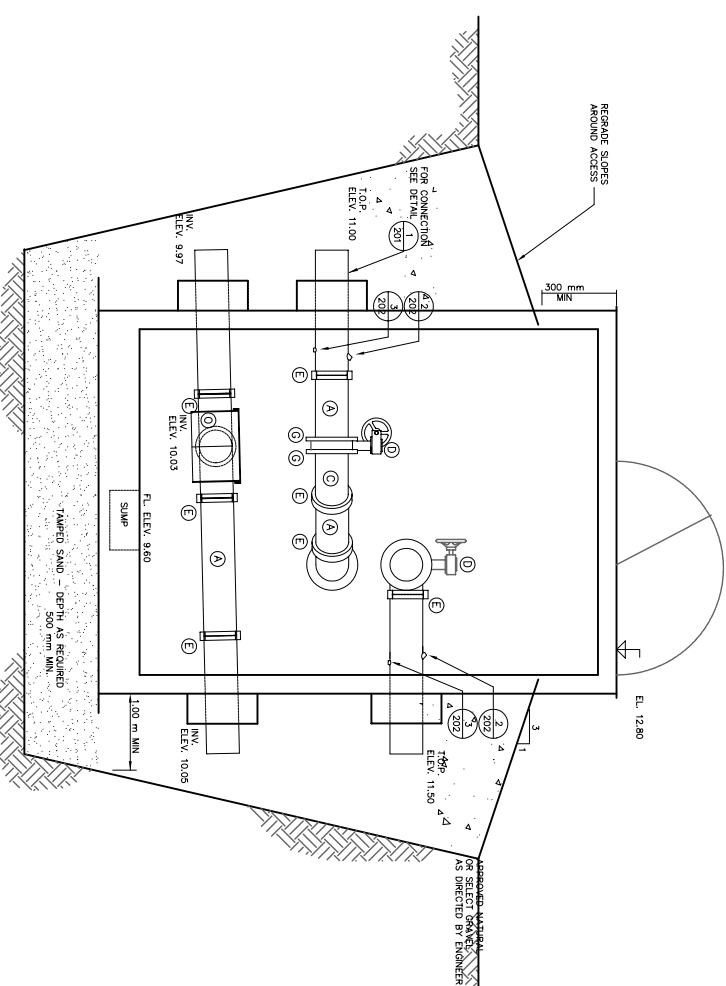


ELEVATION - ACCESS VAULT B-17

SCALE: N.T.S.

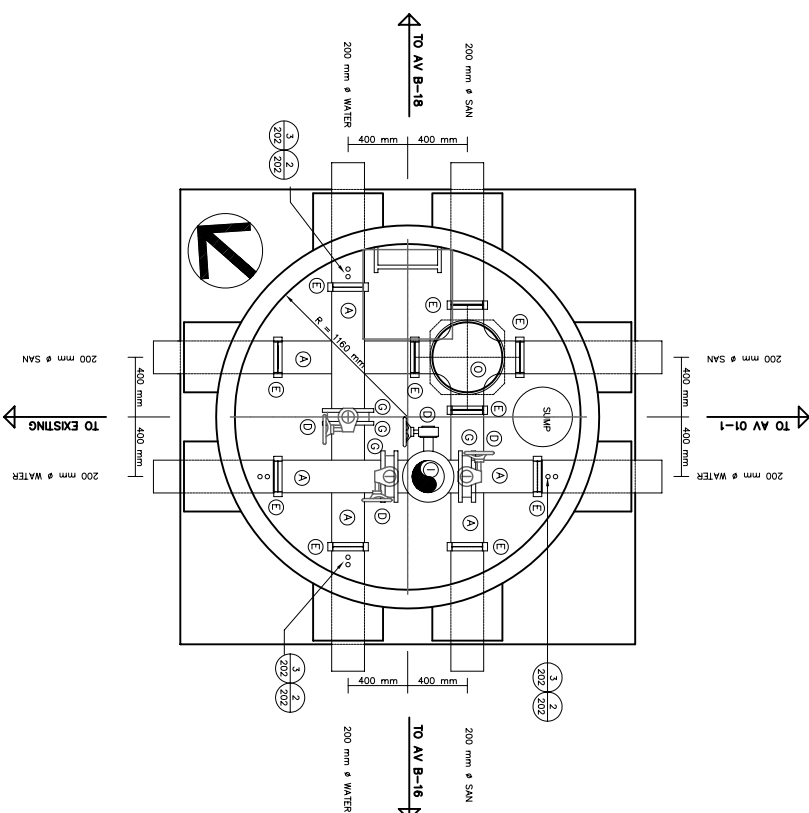
KEY TO NUMBERED PARTS

- A. SPOOL, PIECE, LENGTH TO SUIT, 200 mm Ø
- B. 45° BEND, SHORT RADIUS, 200 mm Ø
- C. 90° BEND, SHORT RADIUS, 200 mm Ø
- D. BUTTERFLY VALVE, 200 mm Ø, AS PER SPECIFICATIONS
- E. VCTAULIC COUPLING, ZERO-FLEX, TYPE 07, 200 mm Ø C/W GASKET
- F. BLIND FLANGE, 200 mm Ø
- G. VCTAULIC FLANGE ADAPTOR, 200 mm Ø
- H. RED. TEE, 200 mm x 200 mm x 150 mm Ø FLANGED TEE, 200 mm Ø FLANGED
- I. TEE, 200 mm Ø FLANGED
- J. FLANGE TO SPOOL, PIECE, 200 mm Ø, STD FLANGE ONE END, FLANGE TO MATCH MCALVANY HYDRANT OTHER END , MIN LENGTH 200 mm
- K. HYDRANT BARREL, LENGTH TO SUIT
- L. SPOOL, PIECE, LENGTH TO SUIT, 150 mm Ø
- M. VCTAULIC COUPLING, ZERO-FLEX, TYPE 07, 150 mm Ø
- N. HYDRANT DRAIN PIPED TO SLUMP, 12 mm Ø RUBBER GARDEN HOSE
- O. SEWER CLEANOUT, CONFIGURE AS REQUIRED, SEE 49372-35-202
- P. MCALVANY M-67 HYDRANT, SEE SPECIFICATIONS
- Q. BUTTERFLY VALVE, 150 mm Ø, AS PER SPECIFICATIONS
- R. 90° BEND, SHORT RADIUS, 150 mm Ø
- S. 10mm THICK STEEL PLATE BETWEEN FLANGES,(EPOXY COATED AS PER SPEC.)
- T. 200mm Ø "DUNHAM" SPOOL, PIECE (WELDED TO WALL FOR HYDRANT SUPPORT) LENGTH TO SUIT.
- U. 11 1/4" BEND, 200mm Ø
- V. 22 1/2" BEND, 200mm Ø



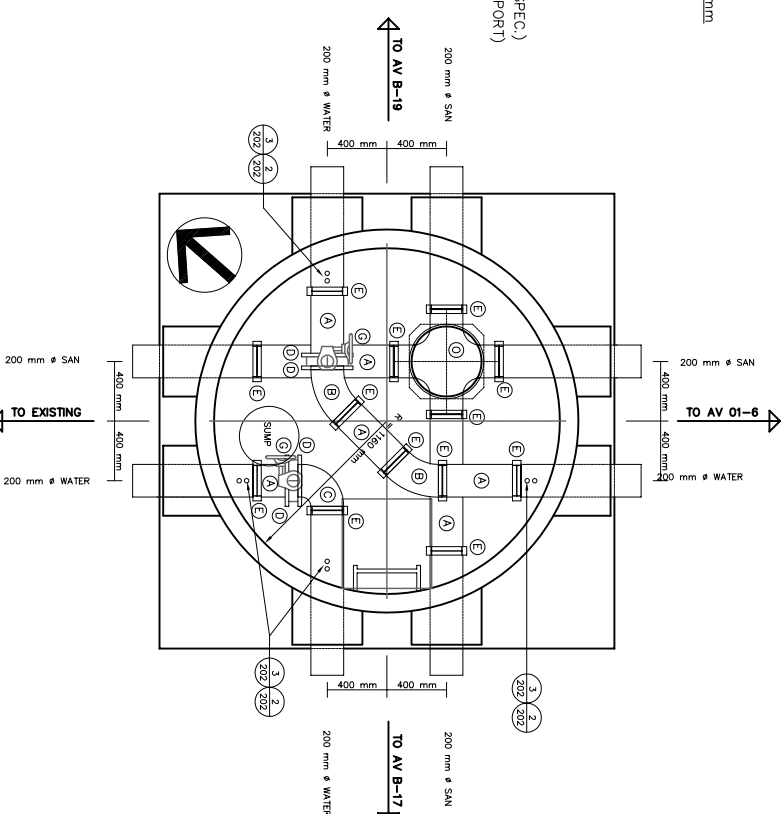
ELEVATION - ACCESS VAULT B-18

SCALE: N.T.S.







PLAN - ACCESS VAULT B-17

SCALE: N.T.S.



PLAN - ACCESS VAULT B-18

SCALE: N.T.

		A tyco INTERNATIONAL LTD. COMPANY 9416, 47TH ST P.O. BOX 12297 VANCOUVER, BC V6T 2N9 CANADA Tel. 867-873-6316 Fax. 867-873-6407 www.eortech.co									
											
PERMIT TO PRACTICE EARTH TECH (CANADA) INC. Signature _____ Date _____ PERMIT NUMBER: P 005 The Association of Professional Engineers, Geologists and Geophysicists of the AMT(M)											
											
Design DTD Drawn DTD Approved MAM Chief											
Director Project Title UTILIDOR REPLACEMENT AREA 1 RANKIN INLET, NU											
Drawing Title Drawing No. Date 00 - 3049 April 2000 Scale AS NOTED AV B-17, AV B-18 74532-230 Revision 0											
REVISIONS <table border="1" style="width: 100%; border-collapse: collapse;"> <thead> <tr> <th>No.</th> <th>Date</th> <th>Description</th> <th>Chk</th> </tr> </thead> <tbody> <tr> <td>04</td> <td>Apr.</td> <td>ISSUED FOR TENDER</td> <td>MAM</td> </tr> </tbody> </table>				No.	Date	Description	Chk	04	Apr.	ISSUED FOR TENDER	MAM
No.	Date	Description	Chk								
04	Apr.	ISSUED FOR TENDER	MAM								
 A = BEAM NO. B = LOCATED ON DRAWING NO.											

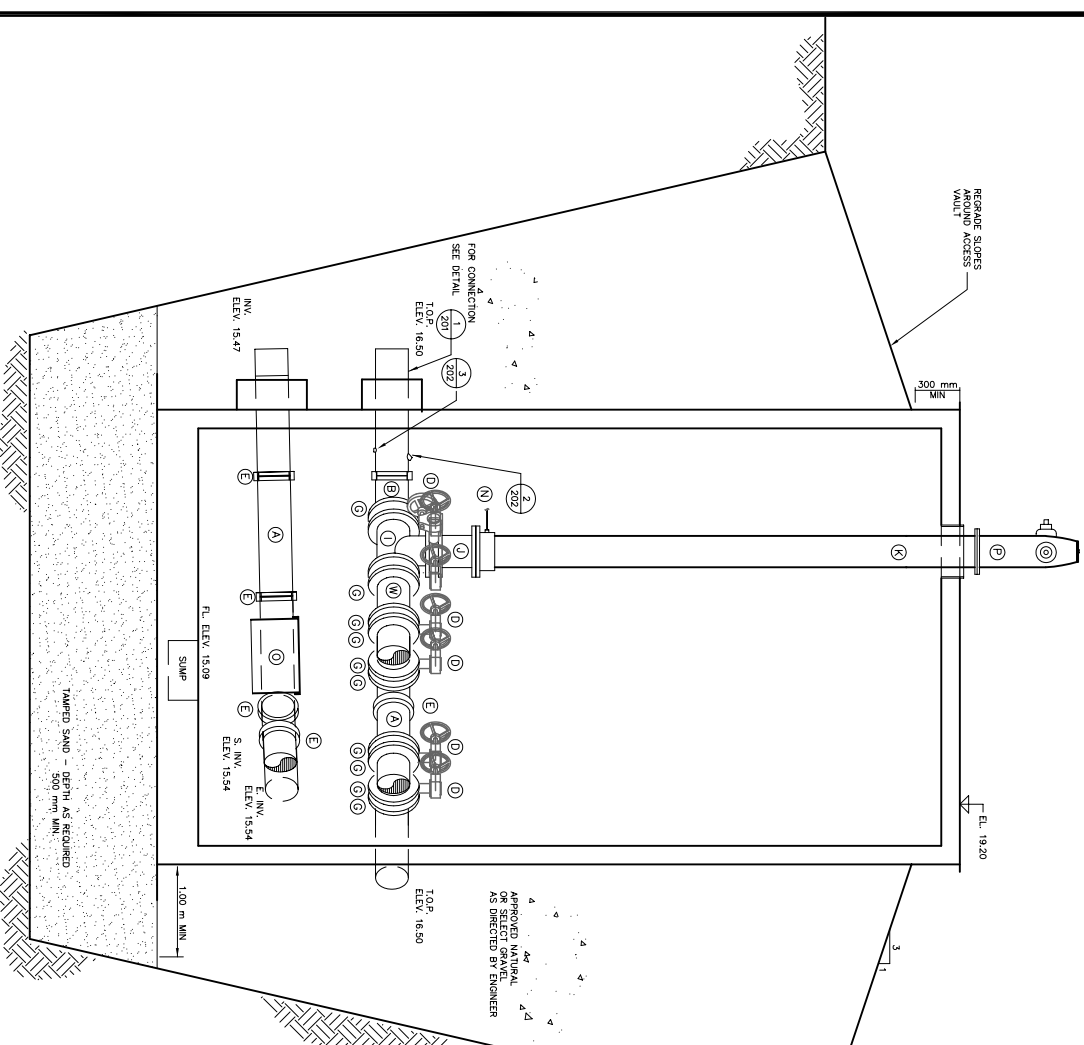
**PERMIT TO PRACTICE
EARTH TECH (CANADA) INC.**

Signature _____

Date _____

PERMIT NUMBER: P 005

The Association of Professional Engineers,
Geologists and Geophysicists of the NWT/NU



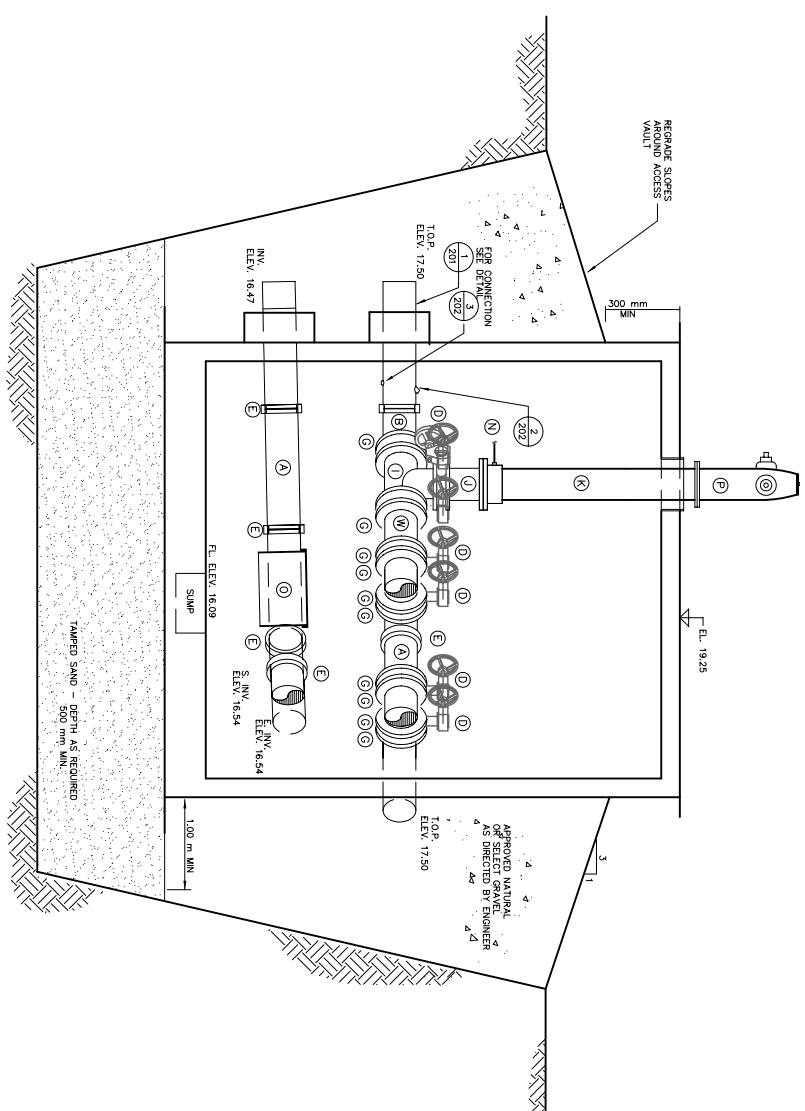
KEY TO NUMBERED PARTS

- (A) SPOOL, PIECE, LENGTH TO SUIT, 200 mm Ø
- (B) 45 ° BEND, SHORT RADIUS, 200 mm Ø
- (C) 90 ° BEND, SHORT RADIUS, 200 mm Ø
- (D) BUTTERFLY VALVE, 200 mm Ø, AS PER SPECIFICATIONS
- (E) VCTAULIC COUPLING, ZERO-FLEX, TYPE 07, 200 mm Ø C/W GASKET
- (F) BLIND FLANGE, 200 mm Ø
- (G) VCTAULIC FLANGE ADAPTOR, 200 mm Ø
- (H) RED. TEE, 200 mm x 200 mm x 150 mm Ø FLANGED
- (I) TEE, 200 mm Ø FLANGED
- (J) HYDRANT SPOOL, PIECE, 200 mm Ø, STD FLANGE, ONE END, FLANGE TO MATCH McAVITY HYDRANT OTHER END , MIN. LENGTH, 200 mm
- (K) HYDRANT BARREL, LENGTH TO SUIT
- (L) SPOOL, PIECE, LENGTH TO SUIT, 150 mm Ø
- (M) VCTAULIC COUPLING, ZERO-FLEX, TYPE 07, 150 mm Ø
- (N) HYDRANT DRAIN PIECE TO SUUP, 12 mm Ø RUBBER GARDEN HOSE
- (O) SEWER CLEANOUT, CONFIGURE AS REQUIRED, SEE 74532-202
- (P) McAVITY M-67 HYDRANT, SEE SPECIFICATIONS
- (Q) BUTTERFLY VALVE, 150 mm Ø, AS PER SPECIFICATIONS
- (R) 90 ° BEND, SHORT RADIUS, 150 mm Ø
- (S) 10mm THICK STEEL PLATE BETWEEN FLANGES,(EPOXY COATED AS PER SPEC.)
- (T) 200mm Ø "DUMMAY" SPOOL, PIECE (WELDED TO WALL FOR HYDRANT SUPPORT LENGTH TO SUIT).
- (U) 11 1/4" BEND, 200mm Ø
- (V) 22 1/2" BEND, 200mm Ø
- (W) VCTAULIC TEE, 200mm Ø
- (X)

NOTE (AV 01-2 AND AV 01-03 ONLY):

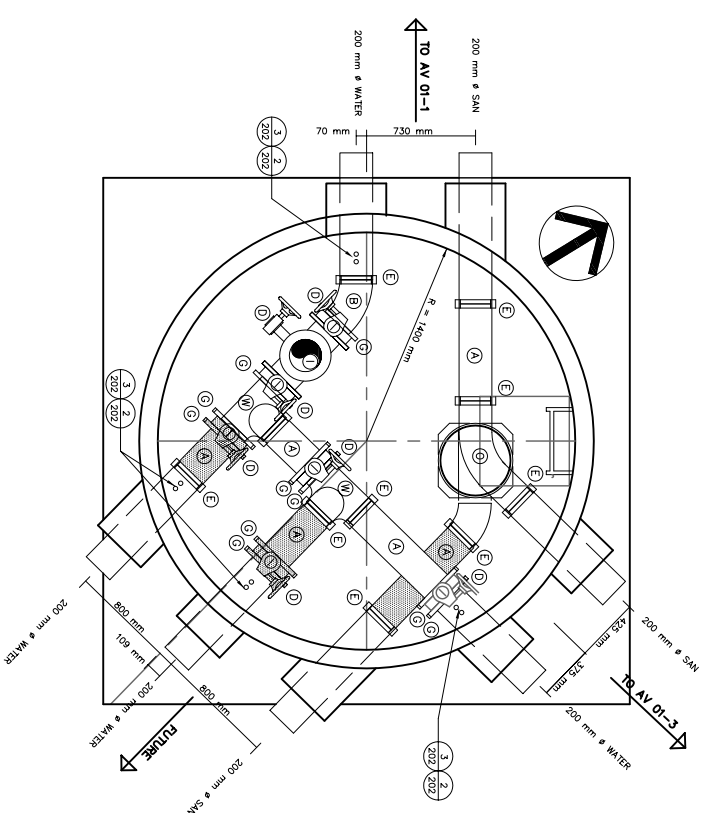
VAULT PIPING TO BE ASSEMBLED COMPLETELY DURING FABRICATION. PRIOR TO SHIPPING, THOSE PORTIONS SHOWN AS SHADED ARE TO BE REMOVED AND SECURED INSIDE THE VAULT.

INSTALL BLIND FLANGES ON OPEN ENDS OF TEES AND STUBS (INSIDE AND OUTSIDE, SOUTH LINE).



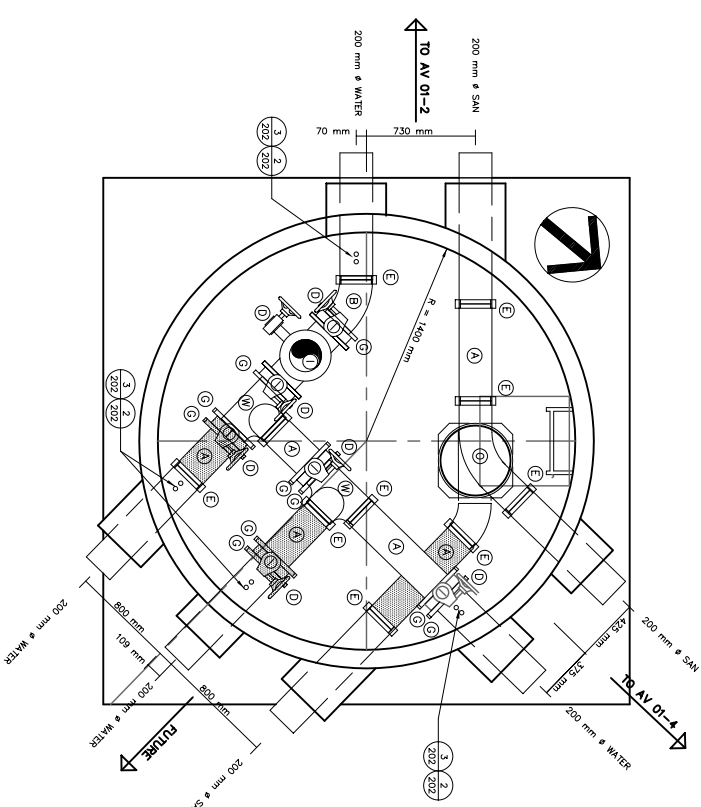
ELEVATION - ACCESS VAULT 01-3

SCALE: N.T.S.



PLAN - ACCESS VAULT 01-2

SCALE: N.T.S.



PLAN - ACCESS VAULT 01-3

SCALE: N.T.S.

		4916, 47TH ST P.O. BOX 12597 WILLOWDALE, ONT. M2H 2G9 CANADA		TEL: 867-673-6316 FAX: 867-673-6400 www.earthtech.ca																																																																									
		EARTH TECH INC. 																																																																											
<p style="text-align: center;">PERMIT TO PRACTICE EARTH TECH (CANADA) INC.</p>																																																																													
		Signature _____																																																																											
		Date _____																																																																											
		PERMIT NUMBER: P 005																																																																											
The Association of Professional Engineers, Geologists and Geophysicists of the NWT/NUNAVUT																																																																													
<table border="1"> <thead> <tr> <th>Design</th> <th>DTD</th> <th>Date</th> <th>Description</th> <th>CHECKED BY</th> <th>DATE</th> </tr> </thead> <tbody> <tr> <td>Drawn</td> <td>DTD</td> <td></td> <td></td> <td></td> <td></td> </tr> <tr> <td>Approved Chief</td> <td>MAL</td> <td></td> <td></td> <td></td> <td></td> </tr> <tr> <td colspan="6">Director Project Title</td> </tr> <tr> <td colspan="6">UTILIDOR REPLACEMENT AREA 1 RANKIN INLET, NU</td> </tr> <tr> <td colspan="6">Drawing Title</td> </tr> <tr> <td colspan="6">Project No.</td> </tr> <tr> <td colspan="6">Scale AS NOTED</td> </tr> <tr> <td colspan="6">AY 01-2, AV 01-3</td> </tr> <tr> <td colspan="6">Dwelling No.</td> </tr> <tr> <td colspan="6">00 - 3049 April 2000 Revision</td> </tr> <tr> <td colspan="6">74532-232 0</td> </tr> </tbody> </table>						Design	DTD	Date	Description	CHECKED BY	DATE	Drawn	DTD					Approved Chief	MAL					Director Project Title						UTILIDOR REPLACEMENT AREA 1 RANKIN INLET, NU						Drawing Title						Project No.						Scale AS NOTED						AY 01-2, AV 01-3						Dwelling No.						00 - 3049 April 2000 Revision						74532-232 0					
Design	DTD	Date	Description	CHECKED BY	DATE																																																																								
Drawn	DTD																																																																												
Approved Chief	MAL																																																																												
Director Project Title																																																																													
UTILIDOR REPLACEMENT AREA 1 RANKIN INLET, NU																																																																													
Drawing Title																																																																													
Project No.																																																																													
Scale AS NOTED																																																																													
AY 01-2, AV 01-3																																																																													
Dwelling No.																																																																													
00 - 3049 April 2000 Revision																																																																													
74532-232 0																																																																													

PERMIT TO PRACTICE
EARTH TECH (CANADA) INC.
Signature _____
Date _____
PERMIT NUMBER: P 005
The Association of Professional Engineers,
Geologists and Geophysicists of the MNTNU

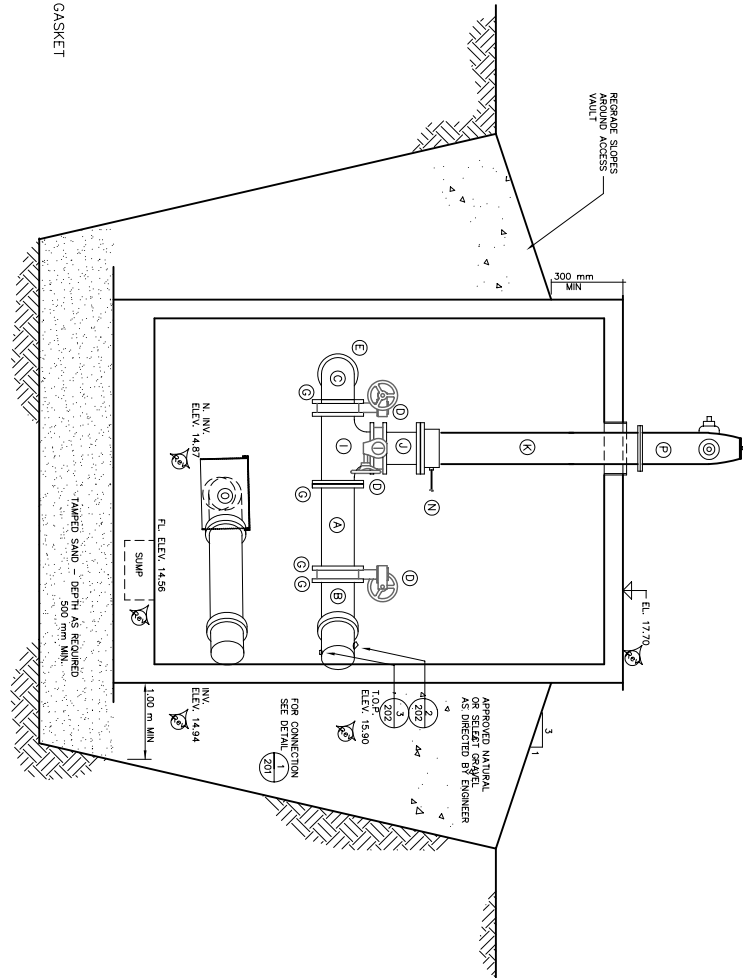


ELEVATION – ACCESS VAULT 01-4

SCALE: N.T.S.

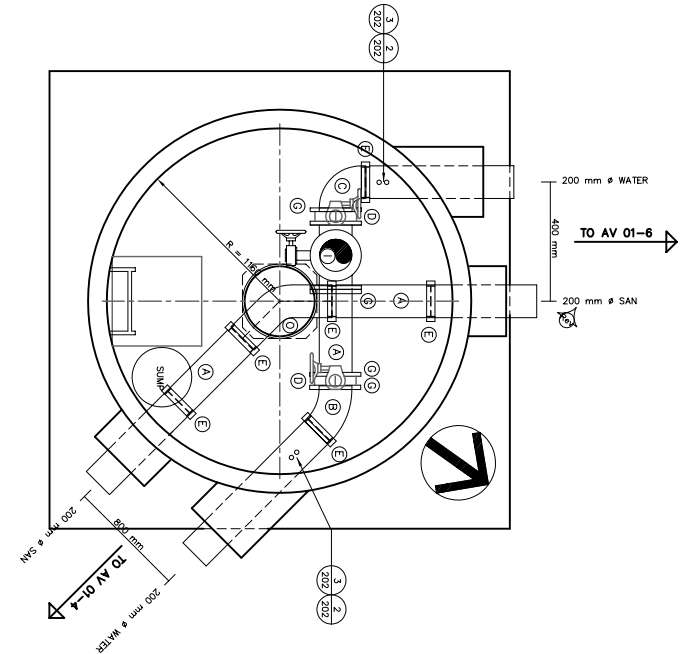
KEY TO NUMBERED PARTS

- A SPOOL PIECE, LENGTH TO SUIT, 200 mm ϕ
- B 45 ° BEND, SHORT RADIUS, 200 mm ϕ
- C 90 ° BEND, SHORT RADIUS, 200 mm ϕ
- D BUTTERFLY VALVE, 200 mm ϕ , AS PER SPECIFICATIONS
- E VICTAULIC COUPLING, ZERO-FLEX, TYPE 07, 200 mm ϕ C/W GASKET
- F BLIND FLANGE, 200 mm ϕ
- G VICTAULIC FLANGE ADAPTOR, 200 mm ϕ
- H RED. TEE, 200 mm x 200 mm x 150 mm ϕ FLANGED
- I HYDRANT SPOOL PIECE, 200 mm ϕ STD FLANGE ONE END, FLANGE TO MATCH MCNAVITY HYDRANT OTHER END , MIN LENGTH 200 mm
- J HYDRANT BARREL, LENGTH TO SUIT
- K SPOOL PIECE, LENGTH TO SUIT, 150 mm ϕ
- L VICTAULIC COUPLING, ZERO-FLEX, TYPE 07, 150 mm ϕ
- M HYDRANT DRAIN PIPED TO SUMP, 12 mm ϕ RUBBER GARDEN HOSE SEWER CLEANOUT, CONFIGURE AS REQUIRED. SEE 74532-202
- N MCNAVITY M-67 HYDRANT, SEE SPECIFICATIONS
- O BUTTERFLY VALVE, 150 mm ϕ , AS PER SPECIFICATIONS
- P 90 ° BEND, SHORT RADIUS, 150 mm ϕ
- Q 10mm THICK STEEL PLATE BETWEEN FLANGES(EPOXY COATED AS PER SPEC.)
- R 200mm ϕ "DUMMY" SPOOL PIECE (WELDED TO WALL FOR HYDRANT SUPPORT) LENGTH TO SUIT.
- S 11 1/4" BEND, 200mm ϕ
- T 22 1/2" BEND, 200mm ϕ



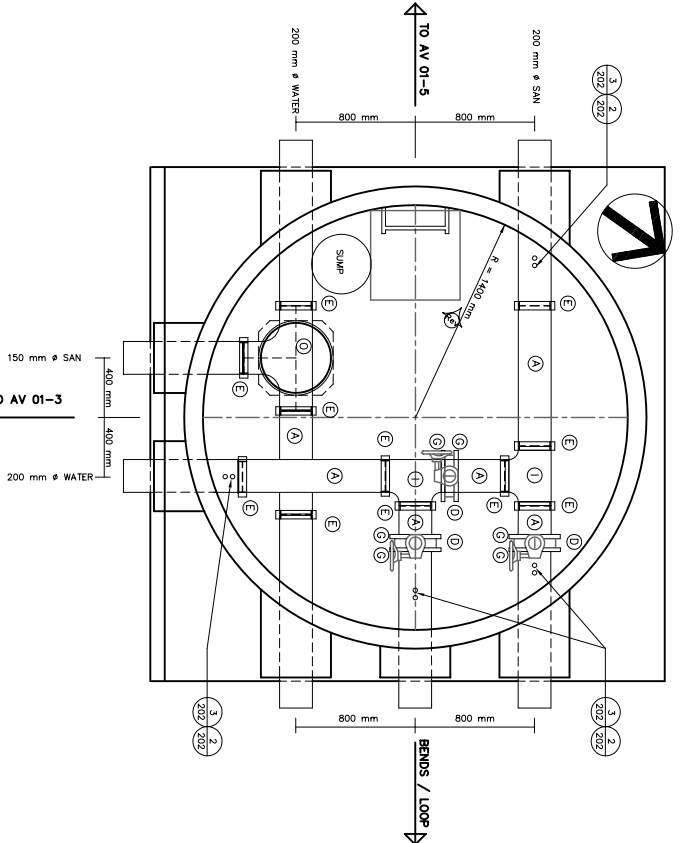
ELEVATION – ACCESS VAULT 01-5

SCALE: N.T.S.



PLAN – ACCESS VAULT 01-5

SCALE: N.T.S.



PLAN – ACCESS VAULT 01-4

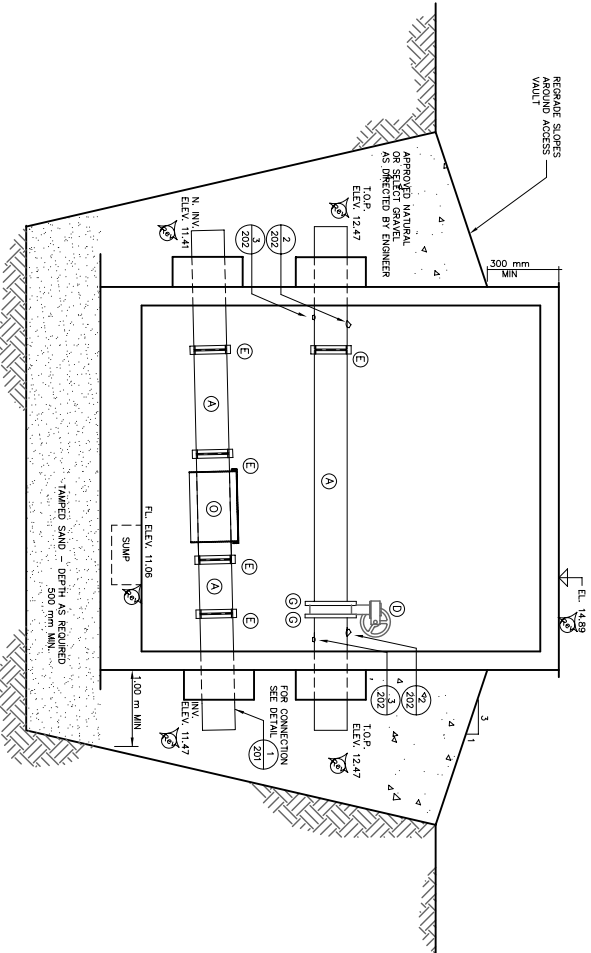
SCALE: N.T.S.

Design	DTD
Drawn	DTD
Approved	MAL
Chief	
Director	
Project Title	UTILIDOR REPLACEMENT AREA 1 RANKIN INLET, NU
Drawing Title	



No.	Date	Description	Chkd
1	04 AUG	REVISIONS	MAL
0	04 APR.	ISSUED FOR TENDER	MAL
REVISIONS			
A = DETAIL No. B = LOCATED ON DRAWING No.			

PERMIT TO PRACTICE
EARTH TECH (CANADA) INC.
Signature _____
Date _____
PERMIT NUMBER: P 005
The Association of Professional Engineers,
Geologists and Geophysicists of the NWT/NUNU



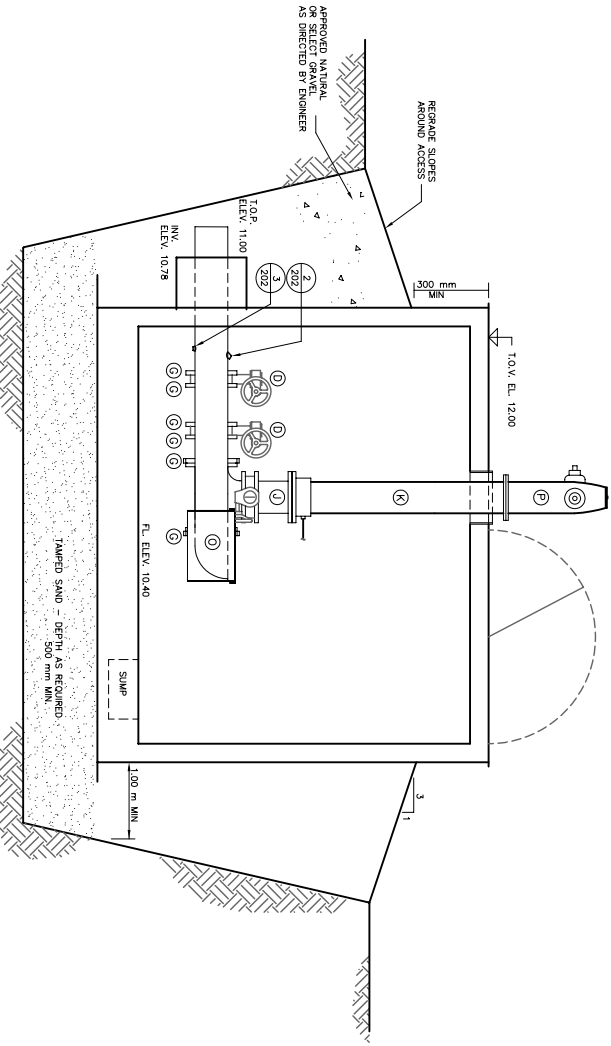
ELEVATION – ACCESS VAULT 01-6

SCALE: N.T.S.

REVISED

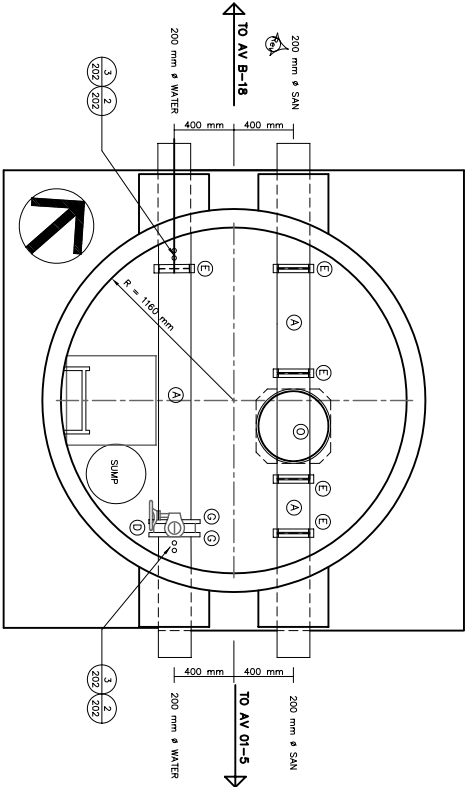
KEY TO NUMBERED PARTS

- A SPOOL PIECE, LENGTH TO SUIT, 200 mm ϕ
- B 45° BEND, SHORT RADIUS, 200 mm ϕ
- C 90° BEND, SHORT RADIUS, 200 mm ϕ
- D BUTTERFLY VALVE, 200 mm ϕ , AS PER SPECIFICATIONS
- E VICTAULIC COUPLING, ZERO-FLEX, TYPE 07, 200 mm ϕ C/W GASKET
- F BLIND FLANGE, 200 mm ϕ
- G VICTAULIC FLANGE ADAPTOR, 200 mm ϕ
- H RED. TEE, 200 mm x 200 mm x 150 mm ϕ FLANGED
- I TEE, 200 mm ϕ FLANGED
- J HYDRANT SPOOL PIECE, 200 mm ϕ , STD. FLANGE ONE END, FLANGE TO MATCH McAVITY HYDRANT OTHER END, MIN LENGTH 200 mm
- K HYDRANT BARREL, LENGTH TO SUIT
- L SPOOL PIECE, LENGTH TO SUIT, 150 mm ϕ
- M VICTAULIC COUPLING, ZERO-FLEX, TYPE 07, 150 mm ϕ
- N HYDRANT DRAIN PIPED TO SUMP, 12 mm ϕ RUBBER GARDEN HOSE
- O SEWER CLEANOUT, CONFIGURE AS REQUIRED. SEE 74532-202
- P McAVITY M-67 HYDRANT, SEE SPECIFICATIONS
- Q BUTTERFLY VALVE, 150 mm ϕ , AS PER SPECIFICATIONS
- R 90° BEND, SHORT RADIUS, 150 mm ϕ
- S 10mm THICK STEEL PLATE BETWEEN FLANGES, (EPOXY COATED AS PER SPEC.)
- T 200mm ϕ "DUMMAY" SPOOL PIECE (WELDED TO WALL FOR HYDRANT SUPPORT) LENGTH TO SUIT.
- U 11 1/4" BEND, 200mm ϕ
- V 22 1/2" BEND, 200mm ϕ



ELEVATION – ACCESS VAULT 01-7

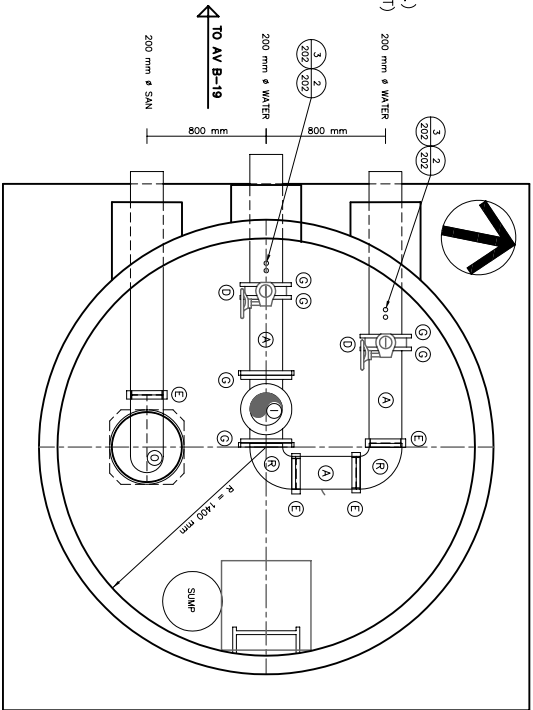
SCALE: N.T.S.



PLAN – ACCESS VAULT 01-6

SCALE: N.T.S.

REVISED



PLAN – ACCESS VAULT 01-7

SCALE: N.T.S.

UTLIDOR REPLACEMENT AREA 1 RANKIN INLET, NU	
Drawing Title	
<u>REVISED</u>	
AV 01-6, AV 01-7	
Scale	AS NOTED
Project No.	Date
00 - 3049	April 2004
Drawing No.	Revision
74532-234	1

