

1. This drawing is the exclusive property of Runge & Associates Inc. and the reproduction of any part without prior written consent of this office is strictly prohibited.
2. The contractor shall verify all dimensions, levels, and datums on site and report any discrepancies or omissions to this office prior to construction.
3. This drawing is to be read and understood in conjunction with all other plans and documents applicable to this project.
4. Drawing revision must be note "Issued For Construction" before any work commences

	Issue / Revision	Date dd/mm/yyyy
1	ISSUED FOR 66% SUBMISSION	06/09/2012
2	ISSUED FOR 99% SUBMISSION	JANUARY 2013
3	ISSUED FOR TENDER	FEBRUARY 2013
4	REVISED AS PER ADDENDUM 1 TO 4 AND ISSUED FOR CONSTRUCTION	APRIL 2013
5	AS BUILT	AUGUST 2015

AS-BUILT DRAWING
AS-BUILT INFORMATION PROVIDED BY THE
GENERAL CONTRACTOR:
KUDLIK CONSTRUCTION LTD.
IQALUIT, NUNAVUT

ORIGINAL
STAMPED
BY
G.Runge
04/22/13

--	--

The logo for Runge & Associates Inc. features the word "runge" in a large, stylized, lowercase serif font. Below it, "& associates inc." is written in a smaller, lowercase sans-serif font, and "ENGINEERS" is written in a bold, uppercase sans-serif font. To the right of the logo is a small square containing the number "12066N". Below the logo, the company's address and contact information are listed in two columns.

12066N

runge
& associates inc. ENGINEERS

864 Hurontario Street
P.O. Box 387
Collingwood, ON, L9Y 3Z7

b: (705) 446-3590
f: (705) 446-3588
www.ralengineers.ca

นุ่นา BURNSIDE
Nuna Burnside Engineering & environmental LTD.
106B Scurfield Blvd., Winnipeg, Manitoba
telephone (204) 949-7110 fax (204) 949-7111
web www.neeganburnside.com

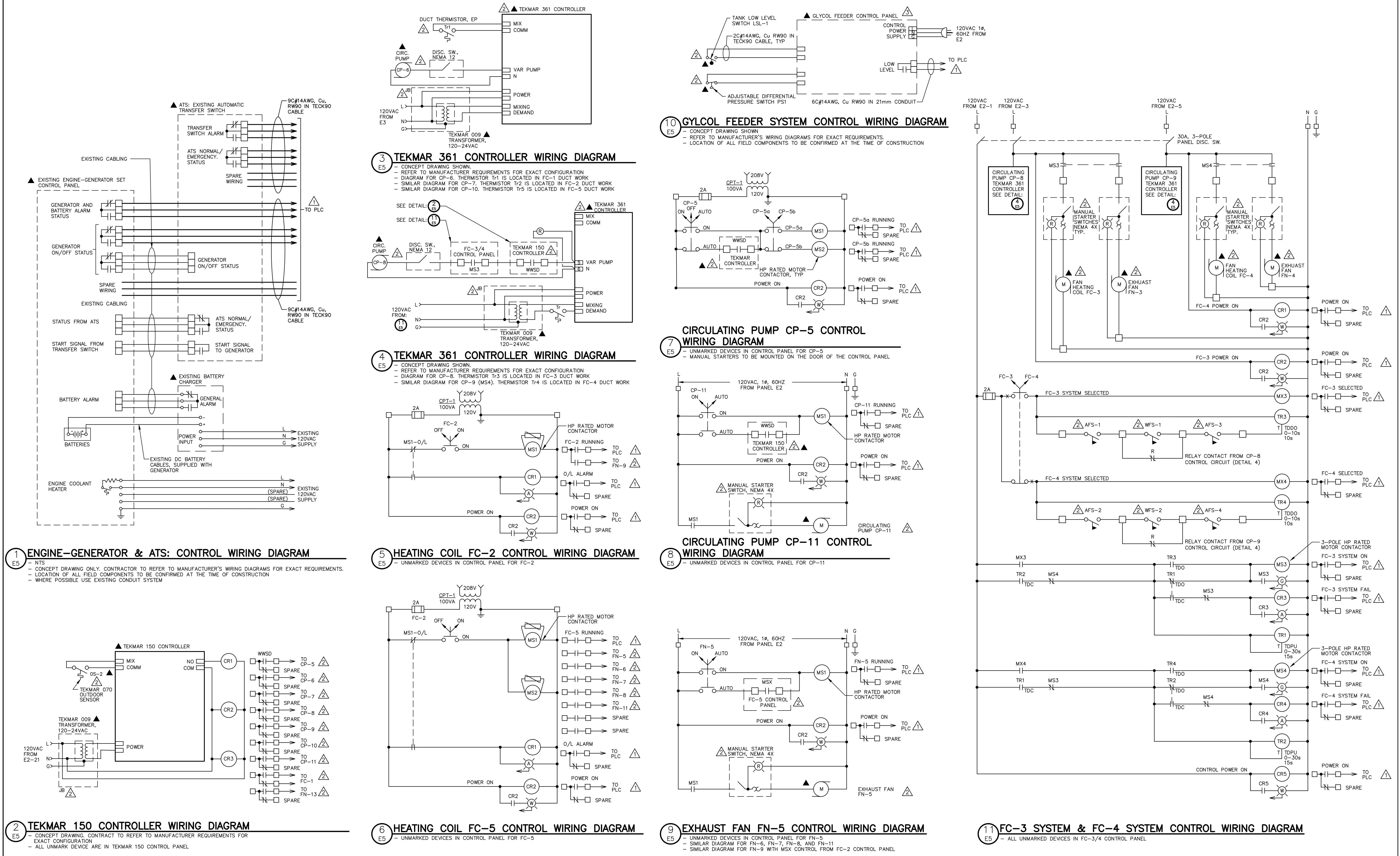
Client

GOVERNMENT OF NUNAVUT
COMMUNITY & GOVERNMENT
SERVICES

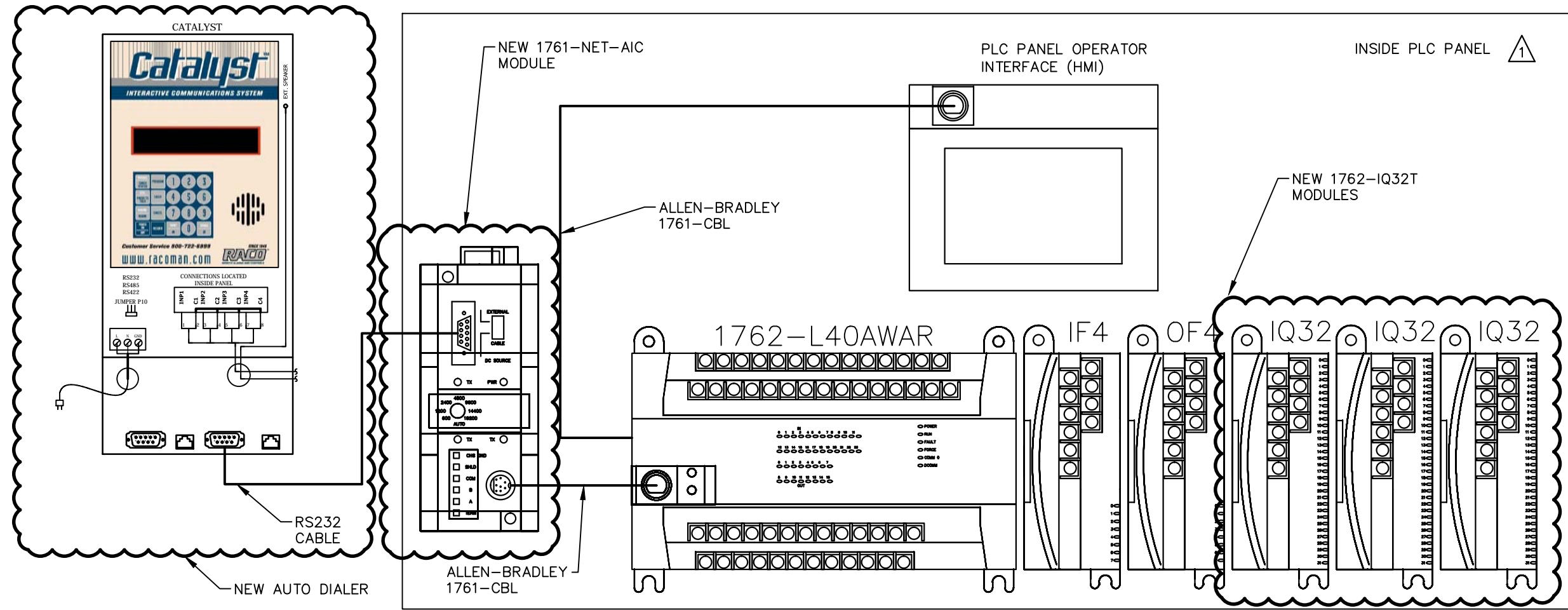
RANKIN INLET

SEWAGE TREATMENT PLANT

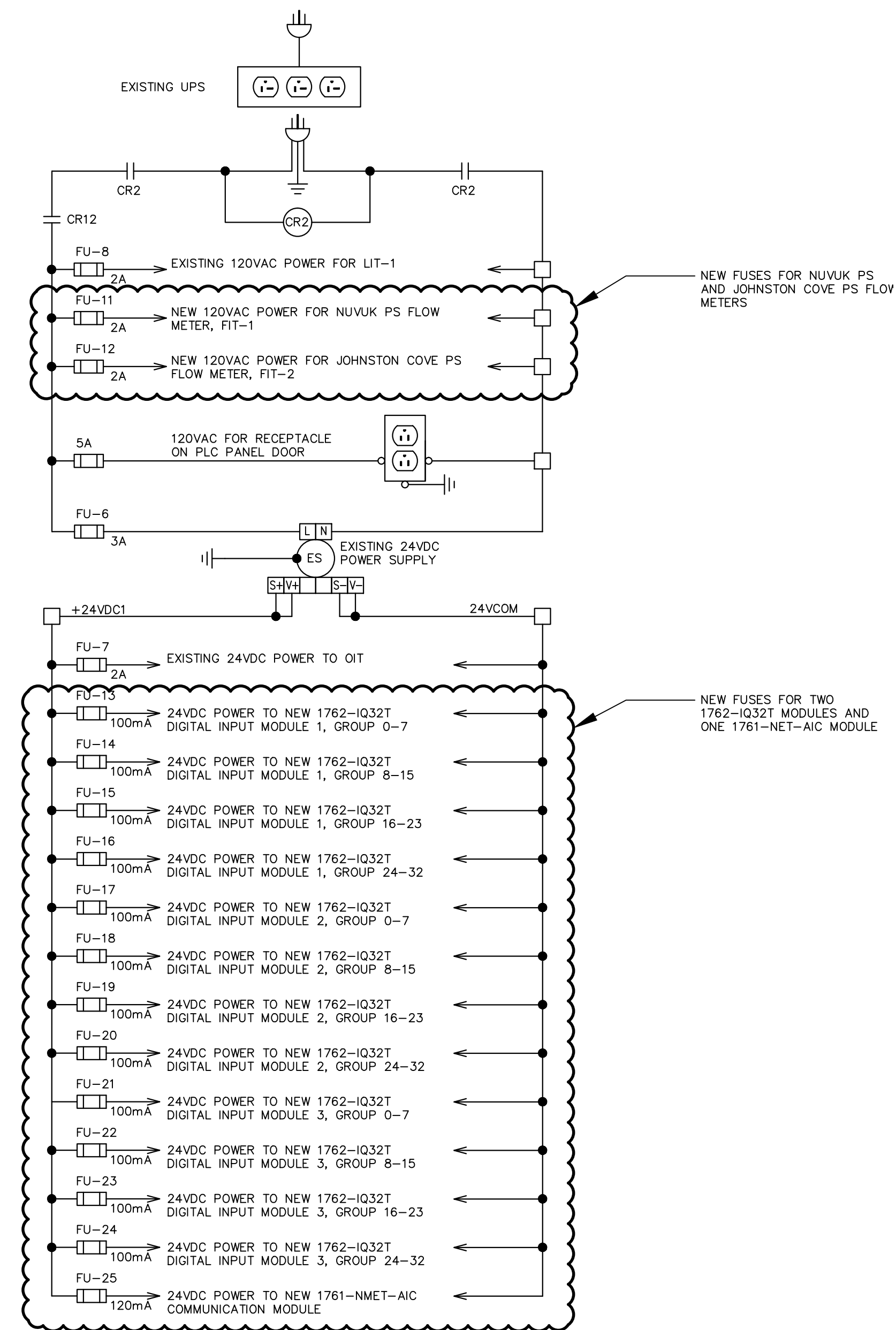
Drawing Title		
ELEMENTARY CONTROL WIRING DIAGRAMS SHEET 1		
Drawn By T.T.	Checked By S.R.T.	Drawing No. 54



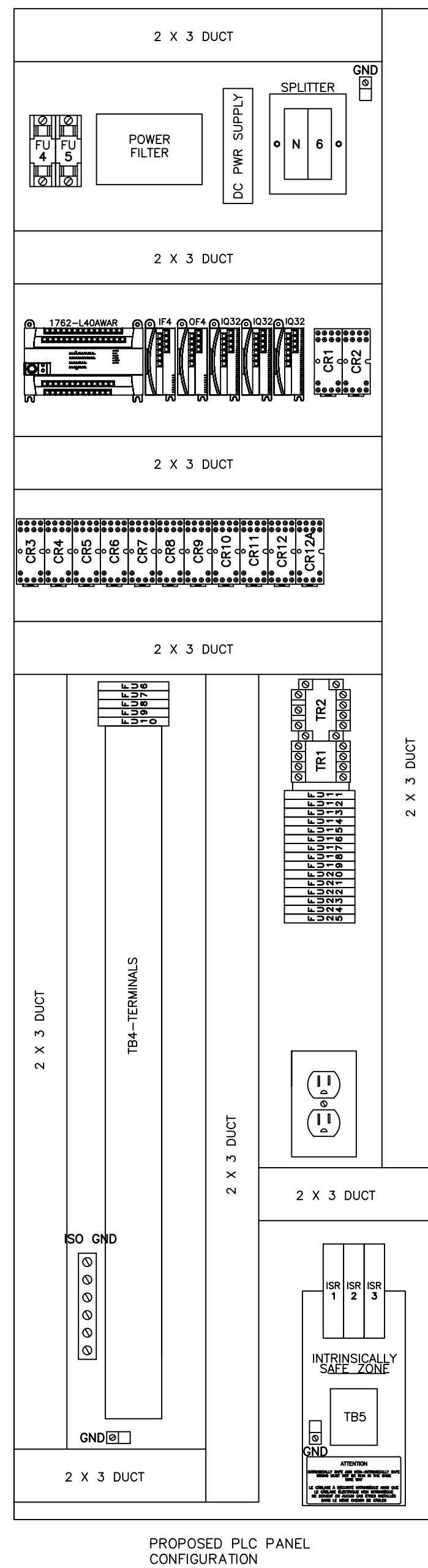
<div>1. This drawing is the exclusive property of Runge & Associates Inc. and the reproduction of any part without prior written consent of this office is strictly prohibited.</div> <div>2. The contractor shall verify all dimensions, levels, and datums on site and report any discrepancies or omissions to this office prior to construction.</div> <div>3. This drawing is to be read and understood in conjunction with all other plans and documents applicable to this project.</div> <div>4. Drawing revision must be noted "Issued For Construction" before any work commences</div>	<div>Issue / Revision</div> <div>1 ISSUED FOR 66% SUBMISSION</div> <div>2 ISSUED FOR 99% SUBMISSION</div> <div>3 ISSUED FOR TENDER</div> <div>4 REVISED AS PER ADDENDUM 1 TO 4 AND ISSUED FOR CONSTRUCTION</div> <div>5 AS BUILT</div>		<div>Date dd/mm/yyyy</div> <div>06/09/2012</div> <div>JANUARY 2013</div> <div>FEBRUARY 2013</div> <div>APRIL 2013</div> <div>AUGUST 2015</div>	<div>AS-BUILT DRAWING</div> <div>AS-BUILT INFORMATION PROVIDED BY THE GENERAL CONTRACTOR:</div> <div>KUDLIK CONSTRUCTION LTD.</div> <div>IGALUIT, NUNAVUT</div>		<div>ORIGINAL STAMPED BY</div> <div>G.Runge</div> <div>04/22/13</div>	<div>runge & associates inc. ENGINEERS</div> <div>864 Hurontario Street</div> <div>P.O. Box 387</div> <div>Collingwood, ON, L9Y 3Z7</div> <div>b: (705) 446-3590</div> <div>f: (705) 446-3588</div> <div>www.rungeengineers.ca</div>	<div>12066N</div> <div>BURNSIDE</div> <div>Nuna Burnside Engineering & environmental LTD.</div> <div>106B Scurfield Blvd., Winnipeg, Manitoba</div> <div>telephone (204) 949-7110 fax (204) 949-7111</div> <div>web www.neeganburnside.com</div>	<div>Client</div> <div>GOVERNMENT OF NUNAVUT</div> <div>COMMUNITY & GOVERNMENT SERVICES</div> <div>RANKIN INLET</div> <div>SEWAGE TREATMENT PLANT</div>	<div>Drawing Title</div> <div>ELEMENTARY CONTROL WIRING DIAGRAMS SHEET 1</div> <div>Drawn By T.T.</div> <div>Checked By S.R.T.</div> <div>Scale AS SHOWN</div> <div>Project No. 300031281</div> <div>Drawing No. E5</div>
---	--	--	--	---	--	---	--	--	---	---



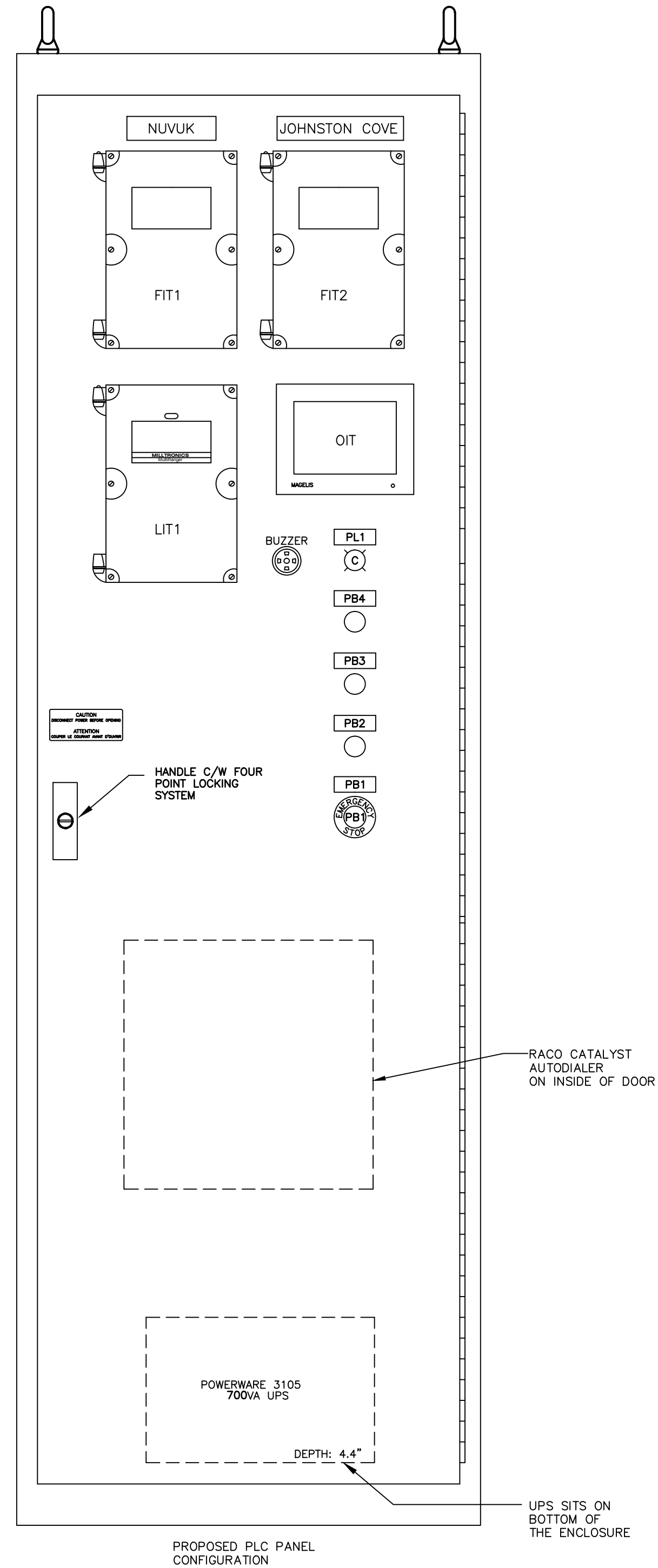
1 PLC COMPONENT LAYOUT
E7 -NTS



2 PLC PANEL - 120VAC AND 24VDC POWER DISTRIBUTION DIAGRAM
E7 -NTS



3 PLC PANEL COMPONENTS CONFIGURATION MODIFICATIONS
E7 -NTS



4 PLC PANEL DOOR CONFIGURATION MODIFICATIONS
E7 -NTS

1. This drawing is the exclusive property of Runge & Associates Inc. and the reproduction of any part without prior written consent of this office is strictly prohibited.

2. The contractor shall verify all dimensions, levels, and datums on site and report any discrepancies or omissions to this office prior to construction.

3. This drawing is to be read and understood in conjunction with all other plans and documents applicable to this project.

4. Drawing revision must be noted "Issued For Construction" before any work commences

Issue / Revision	Date dd/mm/yyyy
1 ISSUED FOR 66% SUBMISSION	06/09/2012
2 ISSUED FOR 99% SUBMISSION	JANUARY 2013
3 ISSUED FOR TENDER	FEBRUARY 2013
4 REVISED AS PER ADDENDUM 1 TO 4 AND ISSUED FOR CONSTRUCTION	APRIL 2013
5 AS BUILT	AUGUST 2015

AS-BUILT DRAWING
AS-BUILT INFORMATION PROVIDED BY THE GENERAL CONTRACTOR:
KUDLIK CONSTRUCTION LTD.
IQALUIT, NUNAVUT

ORIGINAL STAMPED BY
G. Runge
04/22/13

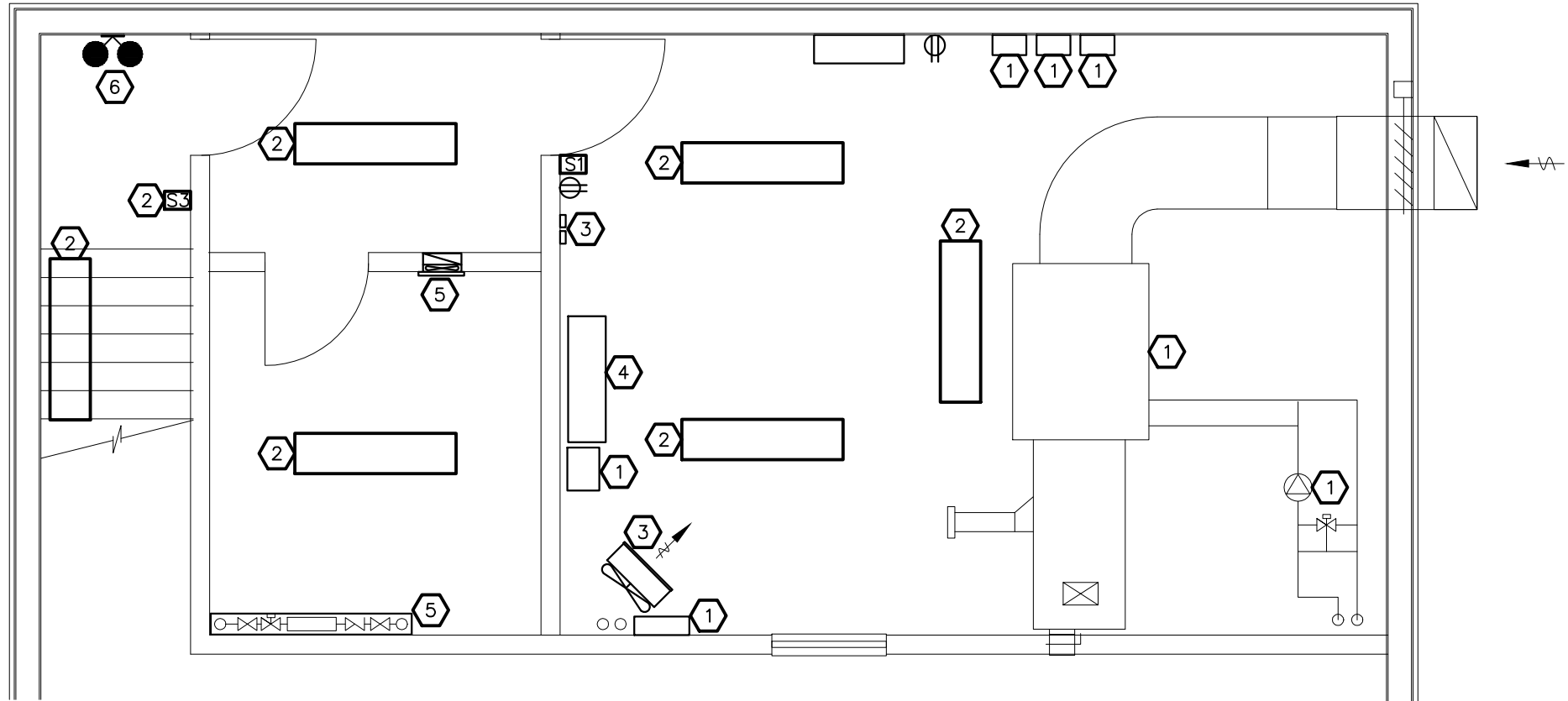
runge & associates inc. ENGINEERS

12066N
664 Hurontario Street
P.O. Box 387
Collingwood, ON, L9Y 3Z7
b: (705) 446-3590
f: (705) 446-3588
www.ralengineers.ca

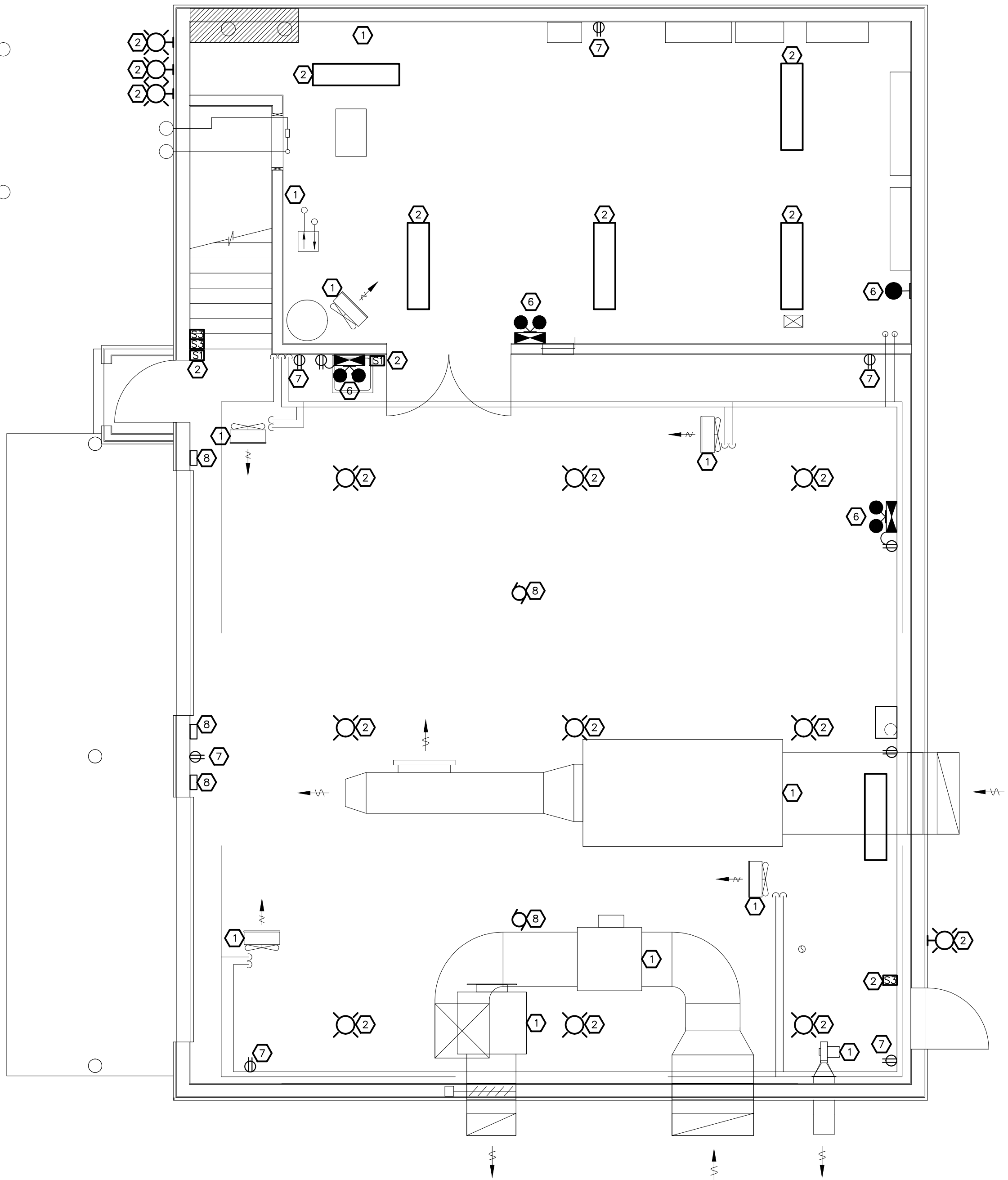
burnside
Nuna Burnside Engineering & environmental LTD.
106B Scurfield Blvd., Winnipeg, Manitoba
telephone (204) 949-7110 fax (204) 949-7111
web www.neeganburnside.com

Client
**GOVERNMENT OF NUNAVUT
COMMUNITY & GOVERNMENT
SERVICES
RANKIN INLET
SEWAGE TREATMENT PLANT**

Drawing Title PLC CONFIGURATION AND PANEL LAYOUTS		
Drawn By T.T.	Checked By S.R.T.	Drawing No. E7
Scale AS SHOWN	Project No. 300031281	



1 ELECTRICAL BUILDING LAYOUT – UPPER LEVEL POWER, LIGHTING AND HVAC REMOVALS
SCALE 1:



3 ELECTRICAL BUILDING LAYOUT – LOWER LEVEL POWER, LIGHTING AND HVAC REMOVALS
SCALE 1:

REMOVAL NOTES:

GENERAL NOTES FOR ALL REMOVAL WORKS:

- UNLESS OTHERWISE NOTED, "REMOVE" OR "REMOVED" INDICATES CONTRACTOR TO DISCONNECT, REMOVE AND DISPOSE OF ELECTRICAL EQUIPMENT INCLUDING ALL ASSOCIATED CONDUIT, FASTENERS, JUNCTION BOXES, SUPPORTS AND WIRING BACK TO POWER SUPPLY PANEL.
- BURIED CONDUIT AND CABLES SHOULD BE CUT OFF AT THE FINISHED FLOOR LEVEL AND SEALED.
- MAINTAIN OPERATION TO ALL AREAS OF THE PLANT, AS THE PLANT IS TO OPERATE AT ALL TIMES WITH MINIMAL INTERRUPTIONS.
- CONTRACTOR TO PREPARE AN ELECTRICAL REMOVAL SCHEDULE FOR REVIEW WITH ENGINEER AND OWNER PRIOR TO BEGINNING ANY SHUT DOWN WORK.
- ALL REMOVAL WORK SCHEDULES REQUIRED BY THE CONTRACTOR ARE TO BE APPROVED BY ENGINEER AND OWNER TEN (10) WORKING DAYS PRIOR TO ANY POWER SHUTDOWN.
- REMOVAL WORK IS TO OCCUR WHILE PLANT IS OPERATING AT "LOW FLOW" CONDITIONS, WITH MINIMAL EQUIPMENT OPERATING. CONTRACTOR IS TO INCLUDE ALL NECESSARY PREMIUM LABOUR TIME TO PERFORM REMOVAL WORK ON WEEKENDS, NIGHTS OR OTHER "NON-REGULAR" TIMES AS DIRECTED BY THE OWNER/OPERATOR.
- CONTRACTOR TO PROVIDE STANDBY POWER IN THE EVENT NORMAL POWER OR EXISTING STANDBY POWER IS UNAVAILABLE DUE TO CONSTRUCTION ACTIVITY OR WORK.

- EXISTING MECHANICAL DEVICE TO BE REMOVED BY MECHANICAL CONTRACTOR. ELECTRICAL CONTRACTOR TO REMOVE ALL ASSOCIATED ELECTRICAL COMPONENTS.
- CONTRACTOR TO REMOVE EXISTING LUMINAIRE AND ASSOCIATED SWITCHES . MARK POWER SUPPLY PANEL BREAKER AS SPARE.
- HUH-11 TO REMAIN. CONTRACTOR REMOVE EXISTING MOTOR STARTER AND START/STOP STATION. MARK POWER SUPPLY PANEL BREAKER AS SPARE.
- CONTRACTOR TO RELOCATE NUVUK PS FLOWMETER AND JOHNSTON COVE PS FLOWMETER TO EXISTING FACILITY PLC. CONTRACTOR TO VERIFY ALL REMAINING EQUIPMENT HAS BEEN MADE REDUNDANT. ONCE VERIFIED, CONTRACTOR REMOVE EXISTING CONTROL CABINET. MARK POWER SUPPLY PANEL BREAKER AS SPARE.
- FN-11 AND WF-2 TO REMAIN. CONTRACTOR TO REMOVE ALL ASSOCIATED ELECTRICAL COMPONENTS.. MARK POWER SUPPLY PANEL BREAKER AS SPARE.
- CONTRACTOR TO REMOVE THE EMERGENCY BATTERY BACKUP LIGHTS AND ASSOCIATED RECEPTACLE. MARK POWER SUPPLY PANEL BREAKER AS SPARE.
- CONTRACTOR TO REMOVE RECEPTACLE. MARK POWER SUPPLY PANEL BREAKER AS SPARE.
- CONTRACTOR TO REMOVE DOOR OPNER, OPEN/CLOSE STATION AND MOTORS. MARK POWER SUPPLY PANEL BREAKER AS SPARE.

- This drawing is the exclusive property of Runge & Associates Inc. and the reproduction of any part without prior written consent of this office is strictly prohibited.
- The contractor shall verify all dimensions, levels, and datum on site and report any discrepancies or omissions to this office prior to construction.
- This drawing is to be read and understood in conjunction with all other plans and documents applicable to this project.
- Drawing revision must be note "Issued For Construction" before any work commences

Issue / Revision	Date dd/mm/yyyy
1 ISSUED FOR 66% SUBMISSION	06/09/2012
2 ISSUED FOR 99% SUBMISSION	JANUARY 2013
3 ISSUED FOR TENDER	FEBUARY 2013
4 REVISED AS PER ADDENDUM 1 TO 4 AND ISSUED FOR CONSTRUCTION	APRIL 2013
5 AS BUILT	AUGUST 2015

AS-BUILT DRAWING
AS-BUILT INFORMATION PROVIDED BY THE
GENERAL CONTRACTOR:
KUDLIK CONSTRUCTION LTD.
IGALUIT, NUNAVUT

ORIGINAL
STAMPED
BY
G.Runge
04/22/13

runge
& associates inc. ENGINEERS
864 Hurontario Street
P.O. Box 387
Collingwood, ON, L9Y 3Z7
b: (705) 446-3590
f: (705) 446-3588
www.ranengineers.ca

12066N
BURNSIDE
Nuna Burnside Engineering & environmental LTD.
106B Scurfield Blvd., Winnipeg, Manitoba
telephone (204) 949-7110 fax (204) 949-7111
web www.neeganburnside.com

Client
GOVERNMENT OF NUNAVUT
COMMUNITY & GOVERNMENT
SERVICES
RANKIN INLET
SEWAGE TREATMENT PLANT

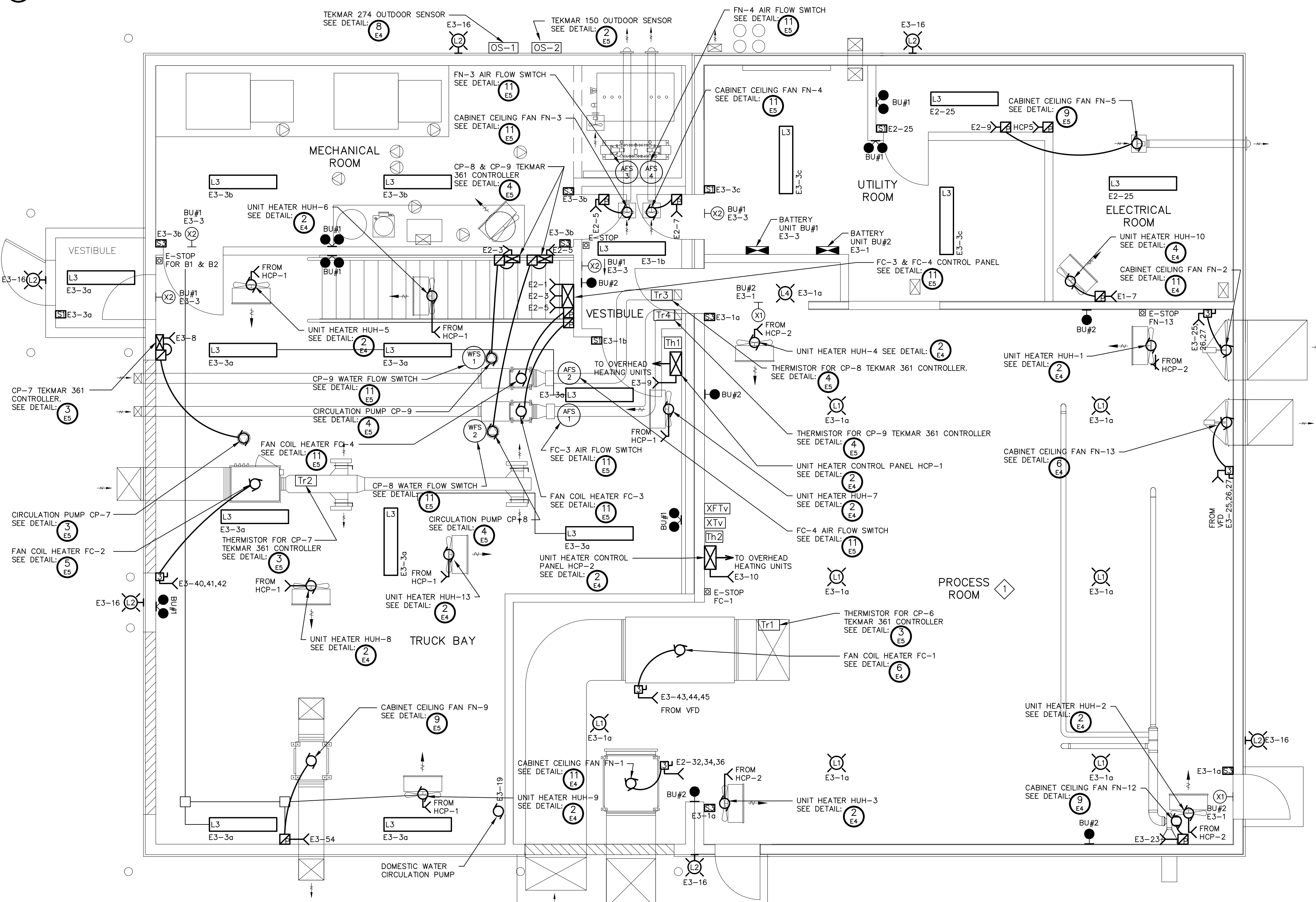
Drawing Title
BUILDING ELECTRICAL EQUIPMENT
LAYOUT – REMOVAL
Drawn By
T.T.
Scale
AS SHOWN
Checked By
S.R.T.
Project No.
300031281
Drawing No.
E8

NOTES

1 ALL COMPONENTS IN THIS AREA HAVE TO BE EXPLOSION-PROOF RATED. A CONSCIOUS EFFORT MUST BE MADE TO MINIMIZE THE COST IMPACT.

ELECTRICAL BUILDING LAYOUT – PROPOSED UPPER LEVEL LIGHTING AND HVAC

2
E9 SCALE 1:50



ELECTRICAL BUILDING LAYOUT – PROPOSED LOWER LEVEL LIGHTING AND HVAC

3
E9 SCALE 1:50

REFER TO DRAWING E12 FOR REVISED "ELECTRICAL BUILDING LAYOUT – PROPOSED MECHANICAL ROOM LAYOUT" AS PER ADDENDUM.

1. This drawing is the exclusive property of Runge & Associates Inc. and the reproduction of any part without prior written consent of this office is strictly prohibited.
2. The contractor shall verify all dimensions, levels, and datums on site and report any discrepancies or omissions to this office prior to construction.
3. This drawing is to be read and understood in conjunction with all other plans and documents applicable to this project.
4. Drawing revision must be noted "Issued For Construction" before any work commences

Issue / Revision	Date dd/mm/yyyy
1 ISSUED FOR 66% SUBMISSION	06/09/2012
2 ISSUED FOR 99% SUBMISSION	JANUARY 2013
3 ISSUED FOR TENDER	FEBRUARY 2013
4 REVISED AS PER ADDENDUM 1 TO 4 AND ISSUED FOR CONSTRUCTION	APRIL 2013
5 AS BUILT	AUGUST 2015

AS-BUILT DRAWING
AS-BUILT INFORMATION PROVIDED BY THE
GENERAL CONTRACTOR:
KUDLIK CONSTRUCTION LTD.
IGALUIT, NUNAVUT

ORIGINAL
STAMPED
BY
G.Runge
04/22/13

runge
& associates inc. ENGINEERS

864 Hurontario Street
P.O. Box 387
Collingwood, ON, L9Y 3Z7
b: (705) 446-3590
f: (705) 446-3588
www.rungeengineers.ca

burnside
Nuna Burnside Engineering & environmental LTD.

106B Scurfield Blvd., Winnipeg, Manitoba
telephone (204) 949-7110 fax (204) 949-7111
web www.neeganburnside.com

Client
GOVERNMENT OF NUNAVUT
COMMUNITY & GOVERNMENT
SERVICES
RANKIN INLET
SEWAGE TREATMENT PLANT

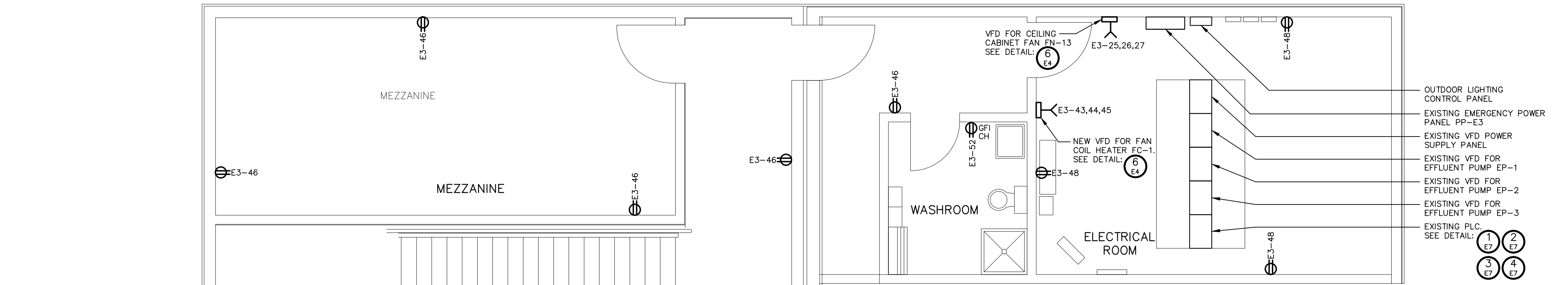
Drawing Title	Drawn By	Checked By	Drawing No.
BUILDING ELECTRICAL EQUIPMENT LAYOUT – LIGHTING AND HVAC	T.T.	S.R.T.	E9
	Scale	Project No.	
	AS SHOWN	300031281	

NOTES

1 ALL COMPONENTS IN THIS AREA HAVE TO BE EXPLOSION-PROOF RATED. A CONSCIOUS EFFORT MUST BE MADE TO MINIMIZE THE COST IMPACT.

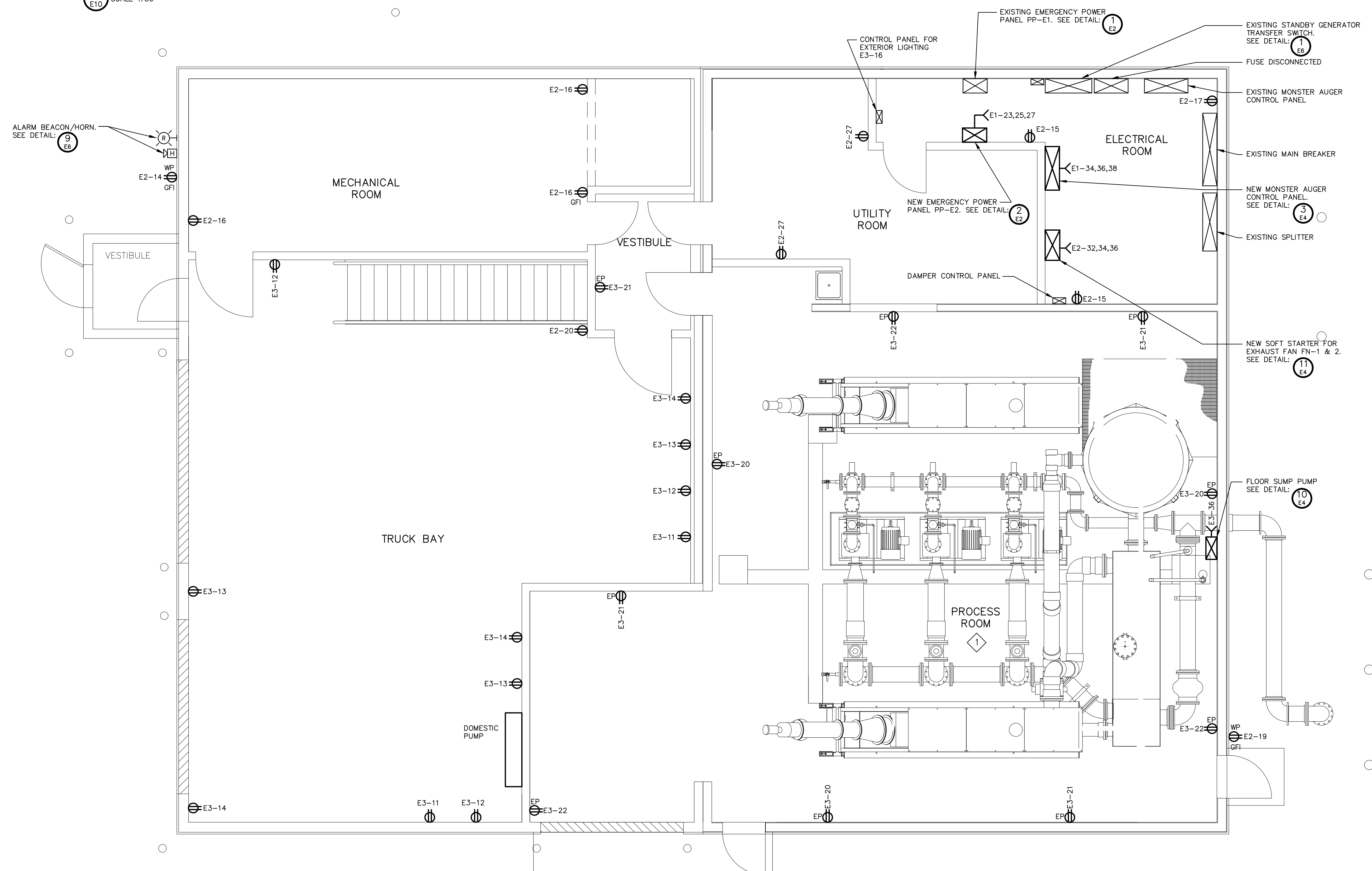
ELECTRICAL BUILDING LAYOUT – PROPOSED UPPER LEVEL POWER

1
E10
SCALE 1:50



ELECTRICAL BUILDING LAYOUT – PROPOSED LOWER LEVEL POWER

2
E10
SCALE 1:50



1. This drawing is the exclusive property of Runge & Associates Inc. and the reproduction of any part without prior written consent of this office is strictly prohibited.

2. The contractor shall verify all dimensions, levels, and datums on site and report any discrepancies or omissions to this office prior to construction.

3. This drawing is to be read and understood in conjunction with all other plans and documents applicable to this project.

4. Drawing revision must be note "Issued For Construction" before any work commences

Issue / Revision	Date dd/mm/yyyy
1 ISSUED FOR 66% SUBMISSION	06/09/2012
2 ISSUED FOR 99% SUBMISSION	JANUARY 2013
3 ISSUED FOR TENDER	FEBUARY 2013
4 REVISED AS PER ADDENDUM 1 TO 4 AND ISSUED FOR CONSTRUCTION	APRIL 2013
5 AS BUILT	AUGUST 2015

AS-BUILT DRAWING
AS-BUILT INFORMATION PROVIDED BY THE
GENERAL CONTRACTOR:
KUDLIK CONSTRUCTION LTD.
IQALUIT, NUNAVUT

ORIGINAL
STAMPED
BY
G.Runge
04/22/13

runge
& associates inc. ENGINEERS
12066N
864 Hurontario Street
P.O. Box 387
Collingwood, ON, L9Y 3Z7
b: (705) 446-3590
f: (705) 446-3588
www.ralengineers.ca

burnside
Nuna Burnside Engineering & environmental LTD.
106B Scurfield Blvd., Winnipeg, Manitoba
telephone (204) 949-7110 fax (204) 949-7111
web www.neeganburnside.com

Client
**GOVERNMENT OF NUNAVUT
COMMUNITY & GOVERNMENT
SERVICES
RANKIN INLET
SEWAGE TREATMENT PLANT**

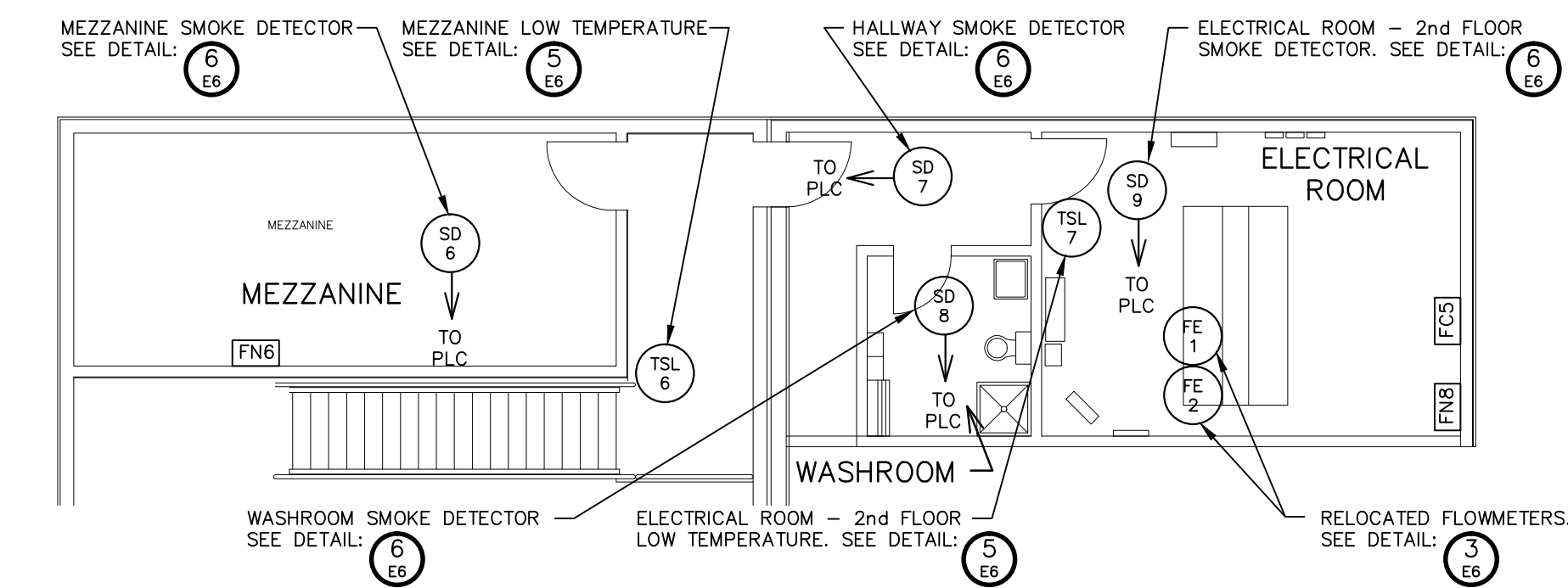
Drawing Title BUILDING ELECTRICAL EQUIPMENT LAYOUT – POWER		
Drawn By T.T.	Checked By S.R.T.	Drawing No. E10
Scale AS SHOWN	Project No. 300031281	

NOTES

- 1 CONTRACTOR TO PROVIDE CABLE TRAY SYSTEM SUPPORTS AND ATTACH IN THE SAME MANNER AS EXISTING. CONTRACTOR TO ENSURE WEATHER PROOF SEAL FOR ALL CABLE PENETRATIONS
- 2 ALL COMPONENTS IN THIS AREA HAVE TO BE EXPLOSION-PROOF RATED. A CONSCIOUS EFFORT MUST BE MADE TO MINIMIZE THE COST IMPACT.
- 3 OVERFLOW BACKUP FLOAT SWITCHES TO BE LOCATED NEXT TO EXISTING ULTRASONIC LEVEL TRANSMITTER ON THE SUMP SIDE. EXACT FINAL LOCATION TO BE DETERMINED IN THE FIELD BY THE ENGINEER.

OVERFLOW BACKUP FLOAT SWITCH HANGER
INSTALLATION DETAIL

- E11
- NTS (DIMENSIONS SHOWN IN MILLIMETERS)
 - CONTRACTOR TO ENSURE FLOAT SWITCH HANGER AND CABLE RINGS ARE SECURELY FASTENED TO TANK WALL AND ALL PENETRATIONS ARE WATER PROOF
 - CONTRACTOR TO PROVIDE FLYGT ENM-10 FLOAT SWITCHES
 - PROVIDE MINIMUM 2 METER CABLE LOOP FOR EACH FLOAT SWITCH
 - FINAL ELEVATION OF FLOATS TO BE DETERMINED IN THE FIELD BY ENGINEER



2 ELECTRICAL BUILDING LAYOUT – PROPOSED UPPER LEVEL INSTRUMENTATION

E11 SCALE 1:100

3 ELECTRICAL BUILDING LAYOUT – PROPOSED LOWER LEVEL INSTRUMENTATION

E11 SCALE 1:50

1. This drawing is the exclusive property of Runge & Associates Inc. and the reproduction of any part without prior written consent of this office is strictly prohibited.

2. The contractor shall verify all dimensions, levels, and datums on site and report any discrepancies or omissions to this office prior to construction.

3. This drawing is to be read and understood in conjunction with all other plans and documents applicable to this project.

4. Drawing revision must be note "Issued For Construction" before any work commences

Issue / Revision	Date dd/mm/yyyy
1 ISSUED FOR 66% SUBMISSION	06/09/2012
2 ISSUED FOR 99% SUBMISSION	JANUARY 2013
3 ISSUED FOR TENDER	FEBRUARY 2013
4 REVISED AS PER ADDENDUM 1 TO 4 AND ISSUED FOR CONSTRUCTION	APRIL 2013
5 AS BUILT	AUGUST 2015

AS-BUILT DRAWING
AS-BUILT INFORMATION PROVIDED BY THE
GENERAL CONTRACTOR:
KUDLIK CONSTRUCTION LTD.
IQALUIT, NUNAVUT

ORIGINAL
STAMPED
BY
G.Runge
04/22/13

runge
& associates inc. ENGINEERS

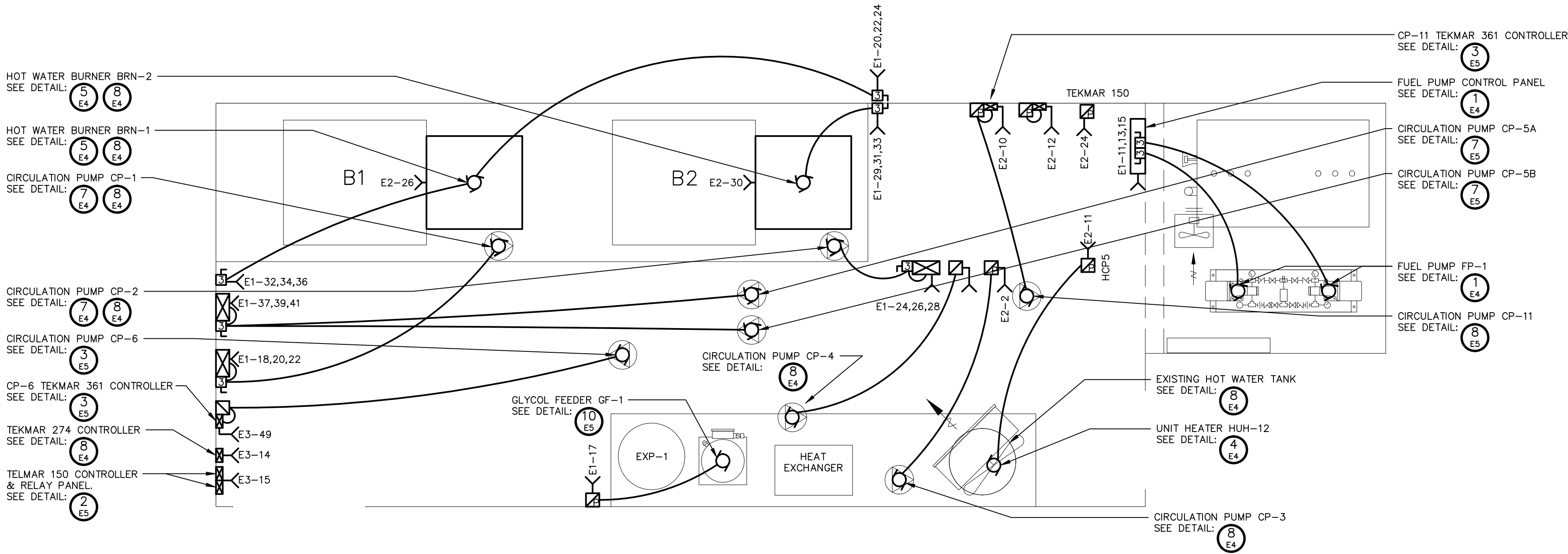
12066N
664 Hurontario Street
P.O. Box 387
Collingwood, ON, L9Y 3Z7
b: (705) 446-3590
f: (705) 446-3588
www.ralengineers.ca

BURNSIDE
Nuna Burnside Engineering & environmental LTD.
106B Scurfield Blvd., Winnipeg, Manitoba
telephone (204) 949-7110 fax (204) 949-7111
web www.neeganburnside.com

Client
GOVERNMENT OF NUNAVUT
COMMUNITY & GOVERNMENT
SERVICES
RANKIN INLET
SEWAGE TREATMENT PLANT

Drawing Title
BUILDING ELECTRICAL EQUIPMENT
LAYOUT – INSTRUMENTATION
Drawn By
T.T.
Scale
AS SHOWN
Checked By
S.R.T.
Project No.
300031281
Drawing No.
E11

GENERAL NOTE:
COORDINATE WITH ALL OTHER ASSOCIATED TRADES TO DETERMINE BEST LOCATIONS TO MOUNT RELATED ELECTRICAL EQUIPMENT IN THE MECHANICAL ROOM. SUBMIT AGREED UPON PLAN VIEW PHYSICAL LAYOUT DRAWING IN THE FORM OF A SHOP DRAWING FOR APPROVAL, INCLUDING EQUIPMENT ELEVATIONS AS REQUIRED TO FULLY ILLUSTRATE PHYSICAL SIZE OF EQUIPMENT AND CLEARANCES REQUIRED BY THE CURRENT CANADIAN ELECTRICAL CODE, RULING AUTHORITIES AND ALL OTHER APPLICABLE CODES.



1 ELECTRICAL BUILDING LAYOUT – PROPOSED MECHANICAL ROOM HVAC LAYOUT
E12 SCALE 1:30

1. This drawing is the exclusive property of Runge & Associates Inc. and the reproduction of any part without prior written consent of this office is strictly prohibited.
2. The contractor shall verify all dimensions, levels, and datums on site and report any discrepancies or omissions to this office prior to construction.
3. This drawing is to be read and understood in conjunction with all other plans and documents applicable to this project.
4. Drawing revision must be note "Issued For Construction" before any work commences

Issue / Revision	Date dd/mm/yyyy
1 ISSUED FOR 66% SUBMISSION	06/09/2012
2 ISSUED FOR 99% SUBMISSION	JANUARY 2013
3 ISSUED FOR TENDER	FEBUARY 2013
4 REVISED AS PER ADDENDUM 1 TO 4 AND ISSUED FOR CONSTRUCTION	APRIL 2013
5 AS BUILT	AUGUST 2015

AS-BUILT DRAWING
AS-BUILT INFORMATION PROVIDED BY THE GENERAL CONTRACTOR:
KUDLIK CONSTRUCTION LTD.
IQALUIT, NUNAVUT

ORIGINAL
STAMPED
BY
G.Runge
04/22/13

runge
 & associates inc. ENGINEERS

12066N

864 Hurontario Street
P.O. Box 387
Collingwood, ON, L9Y 3Z7

b: (705) 446-3590
f: (705) 446-3588
www.ralengineers.ca

Burnside
Nuna Burnside Engineering & environmental LTD.
106B Scurfield Blvd., Winnipeg, Manitoba
telephone (204) 949-7110 fax (204) 949-7111
web www.neeganburnside.com

Client

GOVERNMENT OF NUNAVUT
COMMUNITY & GOVERNMENT
SERVICES
RANKIN INLET
SEWAGE TREATMENT PLANT

Drawing Title		
BUILDING ELECTRICAL EQUIPMENT LAYOUT – MECHANICAL ROOM HVAC LAYOUT		
Drawn By T.T.	Checked By S.R.T.	Drawing No.
Scale AS SHOWN	Project No. 300031281	E12