



Nunavut - Community & Government Services
- Rankin Inlet
ATTN: JOE STRICKLAND - FACILITY MGR
P.O. Box 490
Rankin Inlet NU X0C 0G0

Date Received: 25-JUL-13
Report Date: 26-JUL-13 15:34 (MT)
Version: FINAL

Client Phone: 867-896-9305

Certificate of Analysis

Lab Work Order #: **L1337986**
Project P.O. #: NOT SUBMITTED
Job Reference:
C of C Numbers:
Legal Site Desc:

Craig Riddell
Account Manager

[This report shall not be reproduced except in full without the written authority of the Laboratory.]

ADDRESS: 1329 Niakwa Road East, Unit 12, Winnipeg, MB R2J 3T4 Canada | Phone: +1 204 255 9720 | Fax: +1 204 255 9721
ALS CANADA LTD Part of the ALS Group A Campbell Brothers Limited Company

ALS ENVIRONMENTAL ANALYTICAL REPORT

Sample Details/Parameters	Result	Qualifier*	D.L.	Units	Extracted	Analyzed	Batch
L1337986-1 WHALE COVE - 007263771 Sampled By: Paul Voisey on 24-JUL-13 @ 10:30 Matrix: Water Total Coliform and E.coli Total Coliforms Escherichia Coli	 2 0		 0 0	 MPN/100mL MPN/100mL		 25-JUL-13 25-JUL-13	 R2656731 R2656731
L1337986-2 WHALE COVE - 007263936 Sampled By: Paul Voisey on 24-JUL-13 @ 09:54 Matrix: Water Total Coliform and E.coli Total Coliforms Escherichia Coli	 0 0		 0 0	 MPN/100mL MPN/100mL		 25-JUL-13 25-JUL-13	 R2656731 R2656731

* Refer to Referenced Information for Qualifiers (if any) and Methodology.

Reference Information

Test Method References:

ALS Test Code	Matrix	Test Description	Method Reference**
TC,EC-QT51-WP	Water	Total Coliform and E.coli	APHA 9223
The analysis of Total Coliform (TC) & Escherichia coli (EC) is processed by Quanti-tray (QT): Two substrates, ONPG for TC detection and MUG for EC detection are used. The substrates are added to the 100 ml sample dispensed into the 51 well tray. The tray is incubated at 35 Celcius for 24 hours. A colour reaction develops to indicate a positive reaction (presence of TC, EC). The number of positive wells are counted and converted to Most Probable Number Units (MPNU) per 100 ml. This test is also called 'rapid MPN method', therefore, the MPN results are derived from a statistical table with a 95% confidence and report as MPN units. The QT detection limit for a negative result is reported as zero.			
TC,EC-QT51-WP	Water	Total Coliform and E.coli	APHA 9223 QT
The analysis of Total Coliform (TC) & Escherichia coli (EC) is processed by Quanti-tray (QT): Two substrates, ONPG for TC detection and MUG for EC detection are used. The substrates are added to the 100 ml sample dispensed into the 51 well tray. The tray is incubated at 35 Celcius for 24 hours. A colour reaction develops to indicate a positive reaction (presence of TC, EC). The number of positive wells are counted and converted to Most Probable Number Units (MPNU) per 100 ml. This test is also called 'rapid MPN method', therefore, the MPN results are derived from a statistical table with a 95% confidence and report as MPN units. The QT detection limit for a negative result is reported as zero.			

** ALS test methods may incorporate modifications from specified reference methods to improve performance.

The last two letters of the above test code(s) indicate the laboratory that performed analytical analysis for that test. Refer to the list below:

Laboratory Definition Code	Laboratory Location
WP	ALS ENVIRONMENTAL - WINNIPEG, MANITOBA, CANADA

Chain of Custody Numbers:

GLOSSARY OF REPORT TERMS

Surrogates are compounds that are similar in behaviour to target analyte(s), but that do not normally occur in environmental samples. For applicable tests, surrogates are added to samples prior to analysis as a check on recovery. In reports that display the D.L. column, laboratory objectives for surrogates are listed there.

mg/kg - milligrams per kilogram based on dry weight of sample

mg/kg wwt - milligrams per kilogram based on wet weight of sample

mg/kg lwt - milligrams per kilogram based on lipid-adjusted weight

mg/L - unit of concentration based on volume, parts per million.

< - Less than.

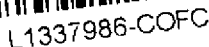
D.L. - The reporting limit.

N/A - Result not available. Refer to qualifier code and definition for explanation.

Test results reported relate only to the samples as received by the laboratory.

UNLESS OTHERWISE STATED, ALL SAMPLES WERE RECEIVED IN ACCEPTABLE CONDITION.

Analytical results in unsigned test reports with the DRAFT watermark are subject to change, pending final QC review.



Nunavut

of Health & Social Services: Kivange

²σΔ^qα^qν)C₂h^bd^c ΔΔ^qh^q)C₂h^bd^cΔ: PΔC^q

at Monakhikavilikiot Olasilikiot : Kivallig

- La Santé et des Services Sociaux : Kivalliq

Environmental Health Officer

Bag 72, Rankin Inlet, NU, X0C 0G0

Phone: (867) 645-8273

Fax: (867) 645-8274

Date rec'd: July 25/13

Time: 12:45

by : GH

Temp : 13°C

L 337986

Bacteriological Analysis of Drinking Water Sample Collection Information Form

Sample Collection Information

Community from which sample was collected:	WHALE COVE
Location of sample collection:	Health Centre
Date of sample collection:	JULY 24. 2013
Time of sample collection:	10:30 AM
Name of person who collected sample:	PAUL VOISEY
Telephone number of person who collected sample:	867-896-9305

FAX 867-896-9304

pvoisey@gov.nu.ca

For Laboratory Use Only

Date Received:	
Date Processed:	Processed by:
Results	
Total Coliform per 100ml:	<i>E. coli</i> per 100ml:
Date Read:	Read by:

- ☐ **No Significant Evidence of Bacteriological Contamination**
Sample collected is bacteriologically safe for human consumption.

☐ **Significant Evidence of Bacteriological Contamination**
Sample collected may be unsafe for human consumption as bacteriological contamination is present.
Resample as soon as possible.

☐ **Unsafe to Drink**
Sample collected is unsafe for human consumption as fecal contamination is present.
Resample as soon as possible.

The above results relate only to the sample tested. This water sample was only tested for the presence of both Total Coliform and *E. coli* bacterial indicators of contamination by using membrane filtration.





Department of Health & Social Services: Kivalliq



L1337986-COFC

Phone: (867) 645-8273

Fax: (867) 645-8274

at Olasilikot : Kivalliq
es Sociaux : Kivalliq

Date rec'd: July 25/13

Time: 12:45

by: GH

Temp: 13.5°C

Bacteriological Analysis of Drinking Water Sample Collection Information Form

Sample Collection Information

Community from which sample was collected:	WHALE COVE
Location of sample collection:	WATER TRUCK
Date of sample collection:	JULY 24. 2013
Time of sample collection:	9:54 AM
Name of person who collected sample:	PAUL VOISEY
Telephone number of person who collected sample:	867-896-9305

FAX 867-896-9304

For Laboratory Use Only pv@voisey@gov.nu.ca

Date Received:	
Date Processed:	Processed by:
Results	
Total Coliform per 100ml:	E. coli per 100ml:
Date Read:	Read by:



No Significant Evidence of Bacteriological Contamination

Sample collected is bacteriologically safe for human consumption.



Significant Evidence of Bacteriological Contamination

Sample collected may be unsafe for human consumption as bacteriological contamination is present.
Resample as soon as possible.

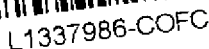


Unsafe to Drink

Sample collected is unsafe for human consumption as fecal contamination is present.
Resample as soon as possible.



The above results relate only to the sample tested. This water sample was only tested for the presence of both Total Coliform and E. coli bacterial indicators of contamination by using membrane filtration.



Nunavut

of Health & Social Services: Kivalliq
ᐅᓂᑦᐱᓕᖃᓚᓴᓵᓲᓪᓰ ᐱᓄᓴᓴᓴᓲᓪᓰ: Pēlō
 at Monakhikakvilikiot Olasilikiot : Kivalliq
 la Santé et des Services Sociaux : Kivalliq

Environmental Health Officer
Bag 72, Rankin Inlet, NU, X0C 0G0
Phone: (867) 645-8273 Fax: (867) 645-8274

Date rec'd: July 25/13

Time: 12:45

by : GH

Temp : 13°C

L1337986

Bacteriological Analysis of Drinking Water Sample Collection Information Form

Sample Collection Information

Community from which sample was collected:	WHALE COVE
Location of sample collection:	Health Centre
Date of sample collection:	JULY 24. 2013
Time of sample collection:	10:30 AM
Name of person who collected sample:	PAUL VOISEY
Telephone number of person who collected sample:	867-896-9305

FAX 867-896-9304

pvoisey@gov.nu.ca

For Laboratory Use Only

Date Received:	
Date Processed:	Processed by:
Results	
Total Coliform per 100ml:	<i>E. coli</i> per 100ml:
Date Read:	Read by:



- ☐ **No Significant Evidence of Bacteriological Contamination**
Sample collected is bacteriologically safe for human consumption.

☐ **Significant Evidence of Bacteriological Contamination**
Sample collected may be unsafe for human consumption as bacteriological contamination is present.
Resample as soon as possible.

☐ **Unsafe to Drink**
Sample collected is unsafe for human consumption as fecal contamination is present.
Resample as soon as possible.

The above results relate only to the sample tested. This water sample was only tested for the presence of both Total Coliform and *E. coli* bacterial indicators of contamination by using membrane filtration.



Department of Health & Social Services: Kivalliq



L1337986-COFC

Phone: (867) 645-8273

Fax: (867) 645-8274

at Olasilikot : Kivalliq
es Sociaux : Kivalliq

Date rec'd: July 25/13

Time: 12:45

by: GH

Temp: 13.5°C

Bacteriological Analysis of Drinking Water Sample Collection Information Form

Sample Collection Information

Community from which sample was collected:	WHALE COVE
Location of sample collection:	WATER TRUCK
Date of sample collection:	JULY 24. 2013
Time of sample collection:	9:54 AM
Name of person who collected sample:	PAUL VOISEY
Telephone number of person who collected sample:	867-896-9305

FAX 867-896-9304

For Laboratory Use Only *pv@voisey@gov.nu.ca*

Date Received:	
Date Processed:	Processed by:
Results	
Total Coliform per 100ml:	E. coli per 100ml:
Date Read:	Read by:

☐

No Significant Evidence of Bacteriological Contamination

Sample collected is bacteriologically safe for human consumption.

☐

Significant Evidence of Bacteriological Contamination

Sample collected may be unsafe for human consumption as bacteriological contamination is present.
Resample as soon as possible.

☐

Unsafe to Drink

Sample collected is unsafe for human consumption as fecal contamination is present.
Resample as soon as possible.



The above results relate only to the sample tested. This water sample was only tested for the presence of both Total Coliform and E. coli bacterial indicators of contamination by using membrane filtration.



Department of Health & Social Services: Kivalliq



L1337986-COFC

Phone: (867) 645-8273

Fax: (867) 645-8274

at Olasilikot : Kivalliq
es Sociaux : Kivalliq

Date rec'd: July 25/13

Time: 12:45

by: GH

Temp: 13.5°C

Bacteriological Analysis of Drinking Water Sample Collection Information Form

Sample Collection Information

Community from which sample was collected:	WHALE COVE
Location of sample collection:	WATER TRUCK
Date of sample collection:	JULY 24. 2013
Time of sample collection:	9:54 AM
Name of person who collected sample:	PAUL VOISEY
Telephone number of person who collected sample:	867-896-9305

FAX 867-896-9304

For Laboratory Use Only

pvoisey@gov.nu.ca

Date Received:	
Date Processed:	Processed by:
Results	
Total Coliform per 100ml:	E. coli per 100ml:
Date Read:	Read by:

☐

No Significant Evidence of Bacteriological Contamination

Sample collected is bacteriologically safe for human consumption.

☐

Significant Evidence of Bacteriological Contamination

Sample collected may be unsafe for human consumption as bacteriological contamination is present.
Resample as soon as possible.

☐

Unsafe to Drink

Sample collected is unsafe for human consumption as fecal contamination is present.
Resample as soon as possible.



The above results relate only to the sample tested. This water sample was only tested for the presence of both Total Coliform and E. coli bacterial indicators of contamination by using membrane filtration.